



Heavy Duty Spring Kit

TITAN® MAX MyRide® 60in Zero Turn Riding Mower

Model No. 163-5940

Installation Instructions

Preparing the Machine

1. Park the machine on a level surface.
2. Disengage the blade-control switch.
3. Engage the parking brake.
4. Move the motion-control levers outward to the PARK position.
5. Shut off the engine and remove the key.



Removing the Existing Rear Springs

1. Remove the cam locknut (1/2 inch) securing the top of the existing rear spring.
Note: Retain the cam locknut (1/2 inch).
2. Remove the flange nut (3/8 inch) securing the bottom of the existing rear spring.
Note: Retain the flange nut (3/8 inch).

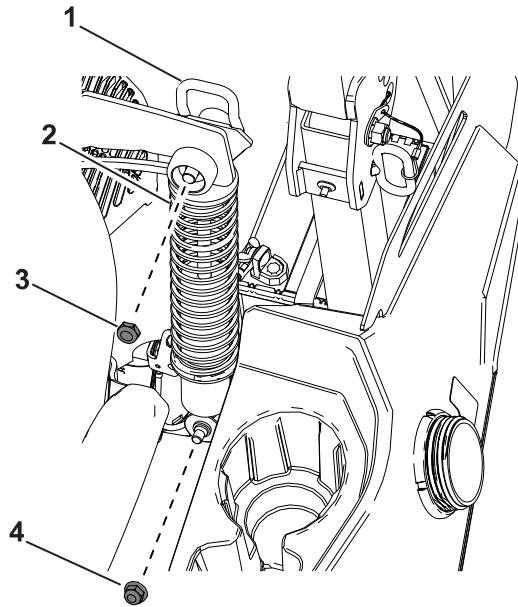


CAUTION



**The springs are under tension and could cause personal injury.
Use caution when removing or installing the springs.**


3. Remove the existing rear spring.
4. Repeat this procedure on the other side.



G528337

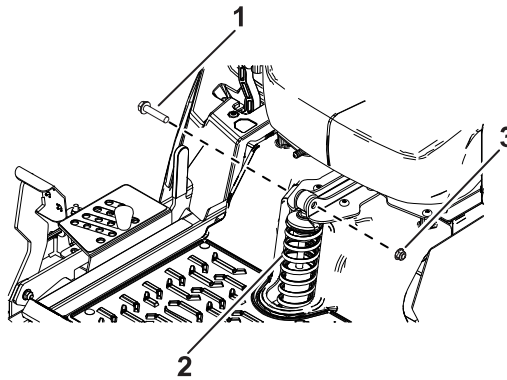
- | | |
|---|-------------------------|
| ① Cam-lock lever in the locked position | ④ Flange nut (3/8 inch) |
| ② Rear spring | |
| ③ Cam locknut (1/2 inch) | |

Installing the New Rear Heavy-Duty Springs

1. Install the new rear spring using the previously removed cam locknut (1/2 inch) and flange nut (3/8 inch).
2.  With the cam-lock lever in the locked position, torque the cam locknut (1/2 inch) to **15 to 16 N·m (135 to 145 in-lb)**.
3. Repeat this procedure on the other side.

Removing the Existing Front Spring

1. Remove the wheel bolt and flange nut (3/8 inch) securing the existing front spring.
Note: Retain the hardware.
2. Remove the existing front spring.



G528841

① Wheel bolt

② Front spring

③ Flange nut (3/8 inch)

Installing the New Front Heavy-Duty Spring

Install the new front spring using the previously removed 2 wheel bolts and 2 flange nuts (3/8 inch) as shown.

