



Count on it.

Parts Catalog

4G RTK Base

**Turf Pro™ Series Robotic Mower or Range
Pro Robotic Ball Picker**

Model No. 30912US—Serial No. 324000000 and Up



Ordering Replacement Parts

To order replacement parts, please supply the part number, the quantity, and the description of each part desired.

Understanding Reference Numbers

Each identified part in an illustration has a reference number. The reference number for a part also appears in the parts list, along with other information about the part.

This catalog uses two special reference number formats, one to indicate parts in a service assembly and another to indicate the quantity of a given part in an illustration.

Service Assembly Reference Numbers

Parts in service assemblies have reference numbers in the form a:b. The a represents the reference number of the entire service assembly and the b represents a sequential number unique to each part within the service assembly.

For example, a wheel assembly might be identified by reference number 6, the tire by 6:1, the valve by 6:2, and the wheel by 6:3. When you order the assembly identified by reference number 6, you receive all parts identified by reference numbers 6:1, 6:2, and 6:3. However, you may also order any part individually. Reference numbers of this type appear in illustration and in parts lists.

Reference Numbers Indicating Quantity

In an illustration, if a reference number indicates more than one part, the reference number has the form nX y. The n represents the quantity of the part, the X is the multiplication symbol, and the y represents the reference number.

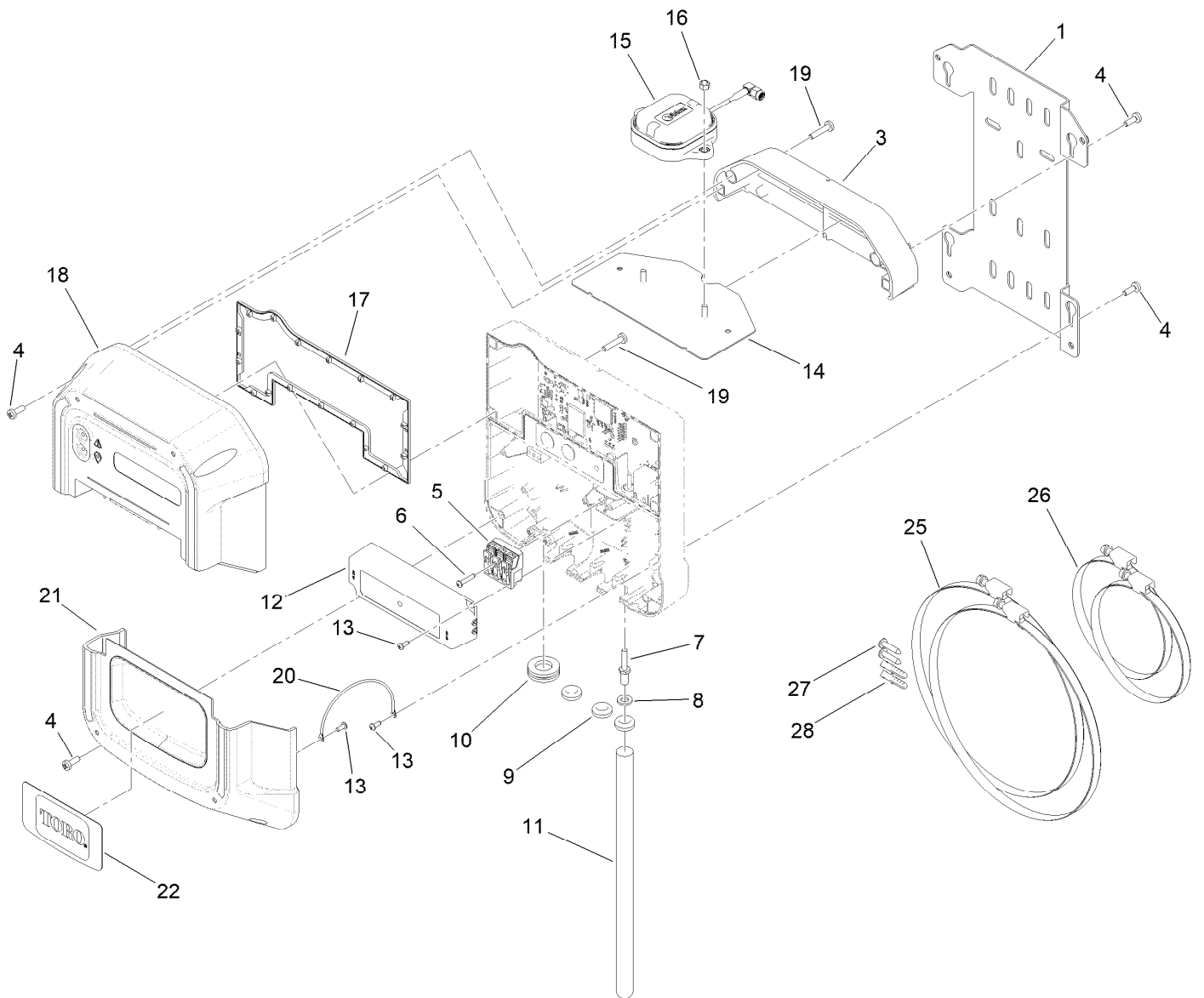
For example, in an illustration, the reference number 2X 37 means that two of the parts identified by reference number 37 are indicated.

Contents

Base Station Assembly 4

Base Station Modem Assembly 6

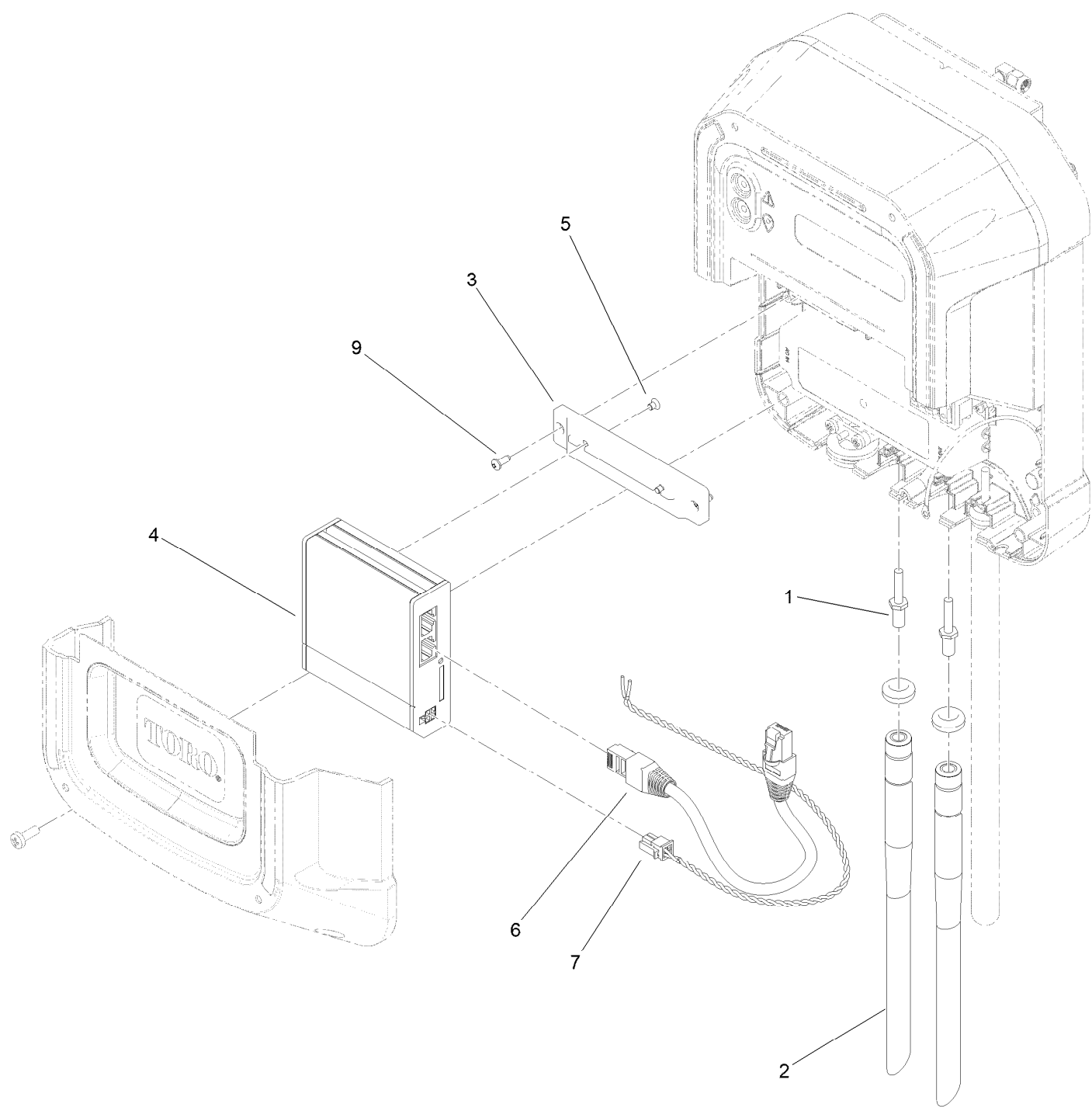
Base Station Assembly



Base Station Assembly (continued)

<i>Ref.</i>	<i>Part Number</i>	<i>Qty.</i>	<i>Description</i>	<i>Ref.</i>	<i>Part Number</i>	<i>Qty.</i>	<i>Description</i>
1	163-5703	1	Plate-Mounting	15	163-5710	1	Antenna-Rtk
3	163-5714	1	Cover-Rear, Station	16	163-5434	2	Nut-Hex, NI
4	163-5701	8	Screw-PPH	17	163-5715	1	Gasket-Cover, Station
5	163-5704	1	Connector-3 Way	18	163-5713	1	Cover-Top, Station
6	163-5380	2	Screw-Pzrh, Plastic	19	163-5700	6	Screw-PPH
7	163-5707	1	Extension-Antenna	20	163-5875	1	Lanyard-Nylon
8	163-5417	1	Washer-Flat	21	163-5712	1	Cover-Bottom, Station
9	163-5706	3	Grommet-Cable	22	163-3977	1	Decal-Toro Logo
10	163-5705	1	Grommet-Cable	25	163-5726	2	Clamp-Hose
11	163-5708	1	Antenna	26	163-5727	2	Clamp-Hose
12	163-5709	1	Supply-Power	27	163-5728	2	Screw-Pzph
13	163-5702	4	Screw-Pz, Plastic	28	163-5729	2	Anchor-Wall
14	163-5711	1	Antenna Support ASM				

Base Station Modem Assembly



Base Station Modem Assembly (continued)

<i>Ref.</i>	<i>Part Number</i>	<i>Qty.</i>	<i>Description</i>	<i>Ref.</i>	<i>Part Number</i>	<i>Qty.</i>	<i>Description</i>
1	163-5719	2	Extension-Sma	5	163-5718	2	Screw-PFH
2	163-5723	2	Antenna-Sma	6	163-5721	1	Cable-Ethernet
3	163-5717	1	Support-Router, 4G	7	163-5722	1	Cable-Power, Modem
4	163-3787	1	Modem-4G, Usa	9	163-5702	2	Screw-Pz, Plastic



Count on it.