



Model No. 41567

# INSTALLATION INSTRUCTIONS

## CAB for the MULTI-PRO® 5500 Vehicle

Refer to the illustrated Parts List for the details of parts used in assembling this kit.

**NOTE:** Instructions include assembly procedures for the ROPS Kit which is a required supplement to the Cab Kit.

**NOTE:** For easier assembly, loosely assemble parts during installation of the Cab, after assembly, safely secure Cab by tightening all hardware.

**NOTE:** SAVE ALL HARDWARE FOR LATER USE UNLESS OTHERWISE NOTED.

**NOTE:** An assistant may be required in the assembly of the Cab.

**NOTE:** "Right", "Left", "Front", and "Rear" are referenced while seated in the Operator's Position.

Insert Anchors have been provided in the ROPS Bar to allow installation of the Cab.

### TORQUE SPECIFICATION CHART

BOLT SIZE	TORQUE VALUE
3/8"	25 FT. LB.
7/16"	45 FT. LB.
5/8"	150 FT. LB.

### A/C Compressor Installation:

1. Disconnect negative cable from vehicle battery.
2. Raise R.H. Seat, unplug Wire Harness Ass'y and disconnect Vacuum Hose from ESC Module located on R.H. Seat Box Panel. Loosen hose clamp and separate 90° hose from Inlet Tube Ass'y, that connects to Air Cleaner. See FIG 1.

3. Remove R.H. Hip Restraint and R.H. Seat Box Panel from vehicle. Air Filter assembly may remain attached to panel. **For added convenience, remove R.H. Seat.** Note: The R.H. Lower Rear Mounting Bolt and Nut and the (3) bolts and hardware from the front of the R.H. Seat Box Panel may be discarded. See FIG 1.

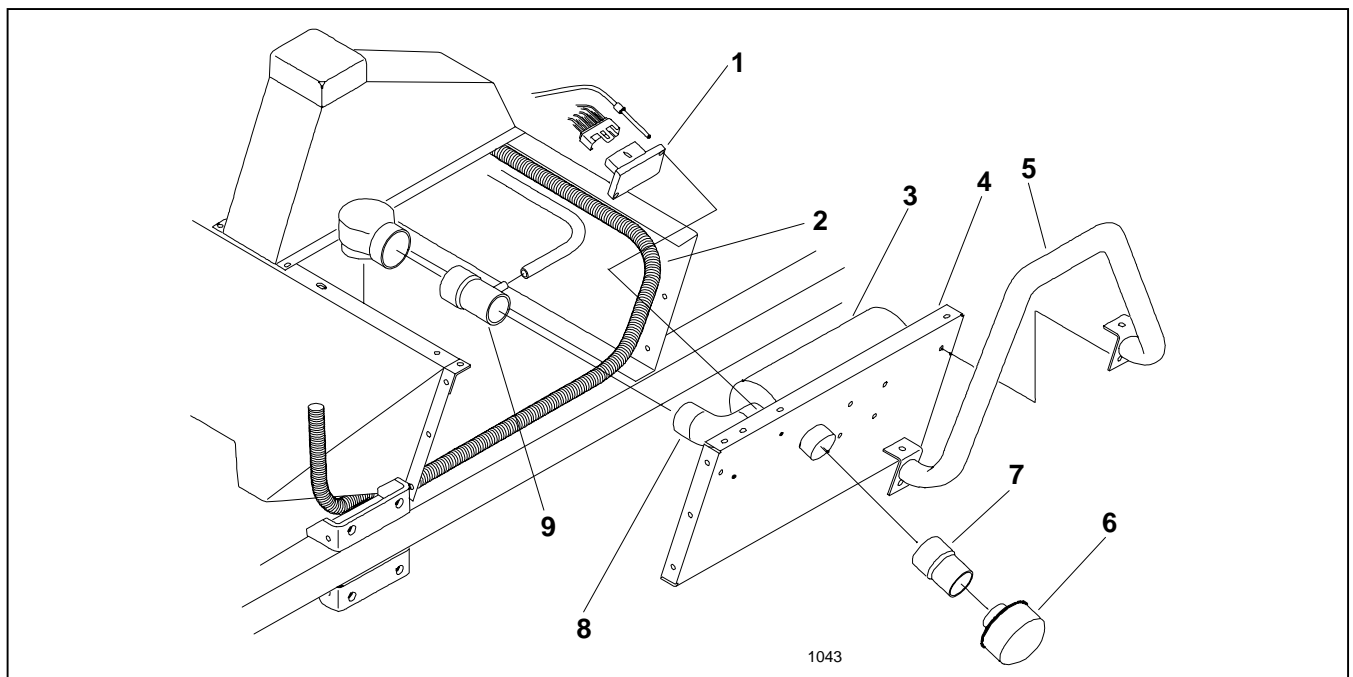


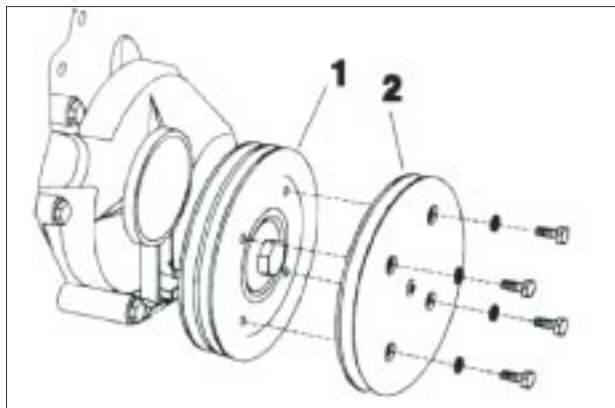
FIG. 1

1. ECS Module
2. Blower Wire Harness
3. Air Cleaner

4. R.H. Seat Box Panel
5. R.H. Hip Restraint
6. Air Inlet Cap

7. Air Intake Extension
8. 90 deg Hose
9. Inlet Tube Ass'y

4. Mount A/C Pulley to Engine Crank Pulley using (4) 5/16" x 1" UNF capscrews and lockwashers. **Tighten Securely** . See FIG. 2.

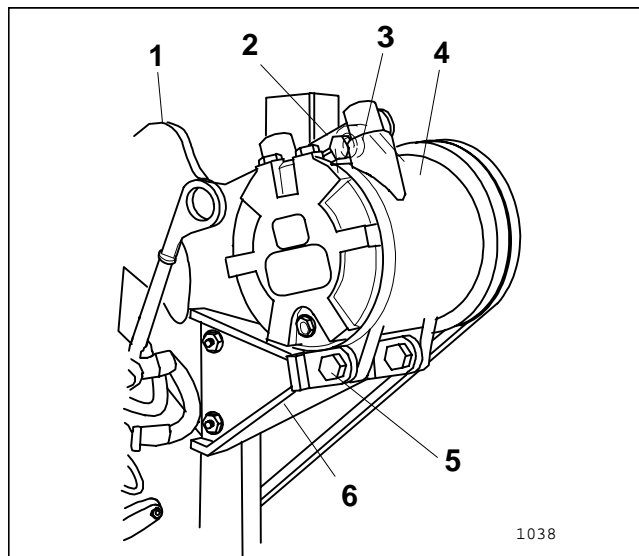


**FIG. 2**

1. Engine Crank Pulley      2. A/C Pulley

5. Mount Compressor Mounting Bracket to rear of Governor Bracket using (2) 3/8" x 1" capscrews and flange locknuts. Note: Use pre-drilled holes in Governor Bracket. See FIG. 3.

6. Install Compressor Adjusting Strap to rear of Governor Bracket using (1) 3/8" x 1" capscrew and 3/8" flange locknut. See FIG. 3



**FIG. 3**

1. Governor Bracket      5. M10 x 35 Cap Screw  
2. Compressor Strap      6. Compressor Mount Bracket  
3. Spacer  
4. Compressor

7. Loosely mount Compressor to Compressor Mounting Bracket using (2) M10 x 35 capscrews. See FIG. 3.

8. Place Compressor Spacer between Compressor Adjusting Strap and Compressor Top Mounting Flange. Loosely mount with M10 x 35 capscrew. Note: Mounting holes are threaded. See FIG. 3.

9. Install A/C. Compressor Belt onto Compressor and A/C. Pulley. Pivot the Compressor to tighten the belt. Belt tension is correct when it can be deflected 3/8" by a 22 lb. force applied mid-span of the Pulleys.

10. When Belt tension is correct, tighten the Compressor Adjusting Strap bolt first (to hold the Compressor in place) then tighten the fasteners on each end of the Compressor Bracket.

### Seat Belt Supports:

1. Remove (2) 5/16" x 1" Center Console rear mount bolts and flatwashers. Save for future use. See FIG. 4.

2. Install R.H. Inside Seat Belt Support, align mounting holes and reinstall 5/16" x 1" capscrew and flatwasher previously removed. The capscrew will pass through the rear of Center Console and the Seat Belt Support. Repeat for L.H. side. See FIG. 4

3. Align R.H. Seat Box Support with lower rear mounting hole and insert 7/16" X 1-1/4" capscrew provided with kit. **NOTE: Nut will be installed later on R.H. side after Seat Box Panel is reinstalled.** See FIG. 4.

4. Remove corresponding capscrew from L.H. Seat Box Panel and attach Seat box support using 7/16" x 1-1/4" capscrew and nut provided with kit.

5. Lift L.H. Seat. Remove the (2) capscrews , washers and nuts along top of Rear Panel Ass'y. Save for later use. Slide Rear Cab Panel under the (2) Inside Seat Belt Brackets. See FIG. 4 & FIG. 7.

6. Align upper mounting hole of R.H. Seat Box Support under Rear Panel Ass'y and R.H. Inside Seat Belt Support. Secure with 7/16" x 1 1/4" carriage bolt and flange locking nut. Repeat for L.H. side. See FIG. 4. Align slots and replace hardware mounting Rear Cab Panel to Rear Panel Ass'y.

7. Secure front of R.H. Inside Seat Belt Support with 5/16" x 3/4" carriage bolt and 5/16" flange locking nut. Repeat for L.H side.

8. Loosen Swell Latch and remove Switch Panel Assembly from Center Console Assembly. See FIG. 4.

9. Install Seat Belt Assembly to R.H. Inside Seat Belt Support using 7/16" x 1 1/4" carriage bolt and flange locknut. **NOTE: The bolt will pass through Belt Support and into Center Console Assembly, through slotted hole. Tighten securely.** Repeat for L.H. side.

10. Reinstall Switch Panel Assembly.

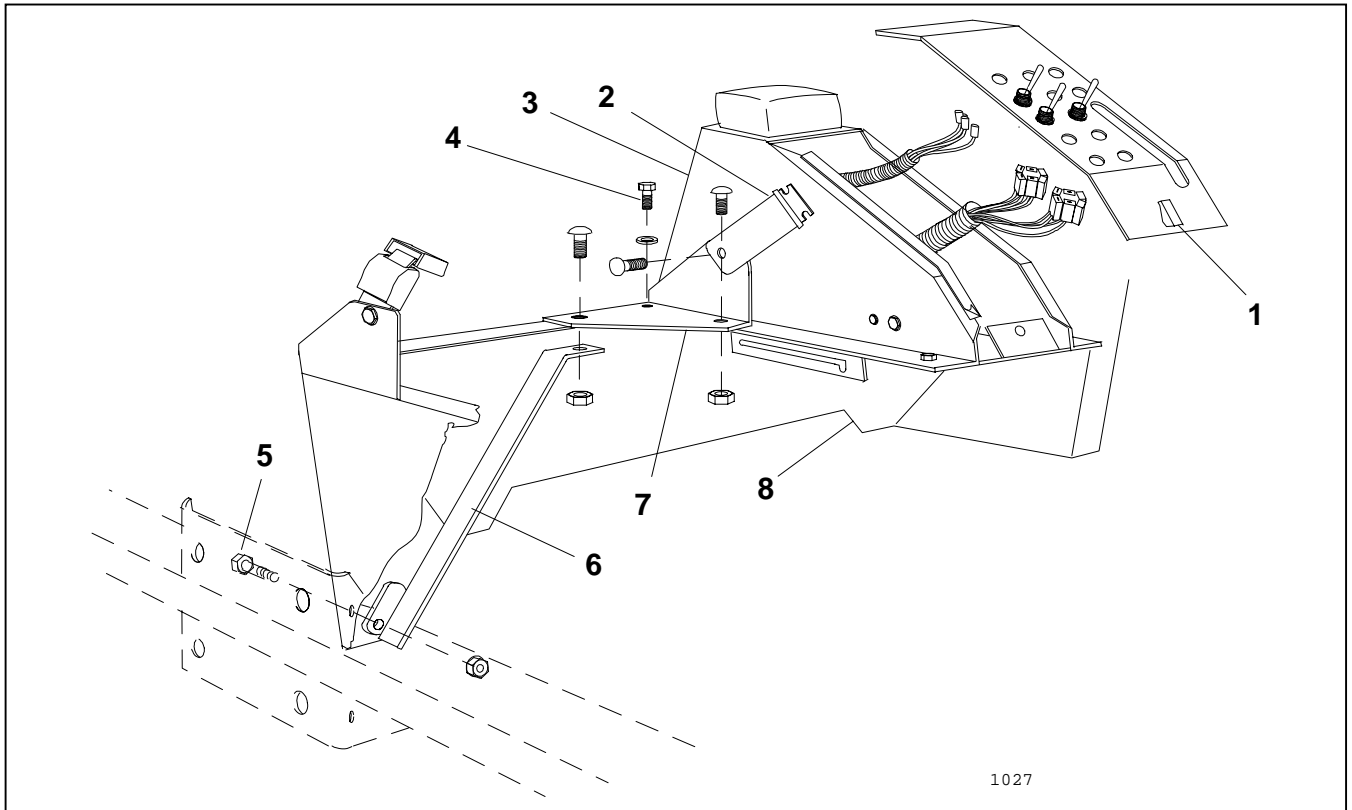


FIG. 4

1. Swell Latch
2. Seat Belt Ass'y
3. Center Console
4. Center Console Rear R.H. Mount Bolt

5. Lower Rear Mounting Bolt
6. R.H. Seat Box Support
7. R.H. Inside Seat Belt Support
8. Rear Panel Ass'y

## ROPS BAR:

1. Mount the Rops Bar to the vehicle frame by inserting (8) 5/8" x 1-1/4" capscrews through the Rops Bar and vehicle frame. Add lockwashers and start nut on capscrews by hand. See FIG 5.

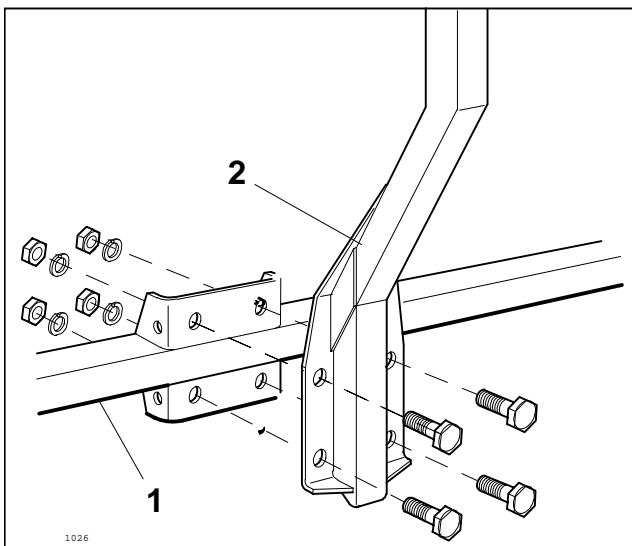


FIG. 5

1. Vehicle Frame
2. Rear ROPS bar

## FRONT BAR ASSEMBLY:

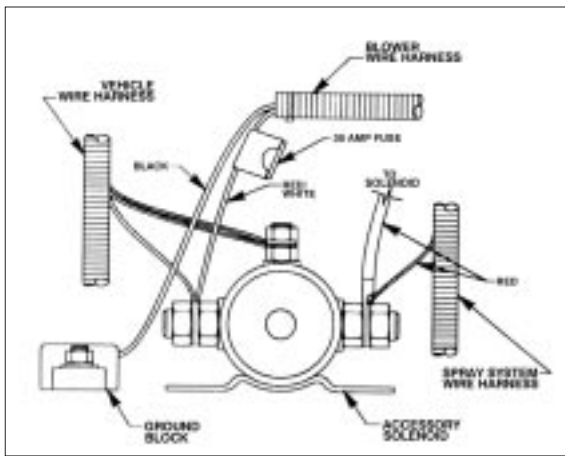
1. Slide Front Bar Assembly onto bumper from front of vehicle. Slip channel around front bumper and top channel onto Rops Bar. See FIG. 7.

2. Loosely secure to Front Bumper with (4) 1/2" x 1-1/4" capscrews and flange locknuts and to Rear Bar with (2) 3/8" x 1" capscrews. See Fig. 7.

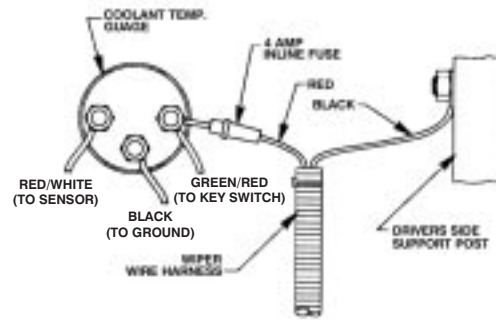
3. Set the Cross Tube on top of the Front Bar Ass'y behind mounting holes. **Note: Do not secure at this time. It will be slid forward and secured later.** See FIG. 12.

4. Tighten all hardware for Front Bar Assembly and then tighten the hardware for the Rops Bar. **Using a torque wrench, torque Rops Bar nuts to 150 ft-lb or 203.4 N-m.**

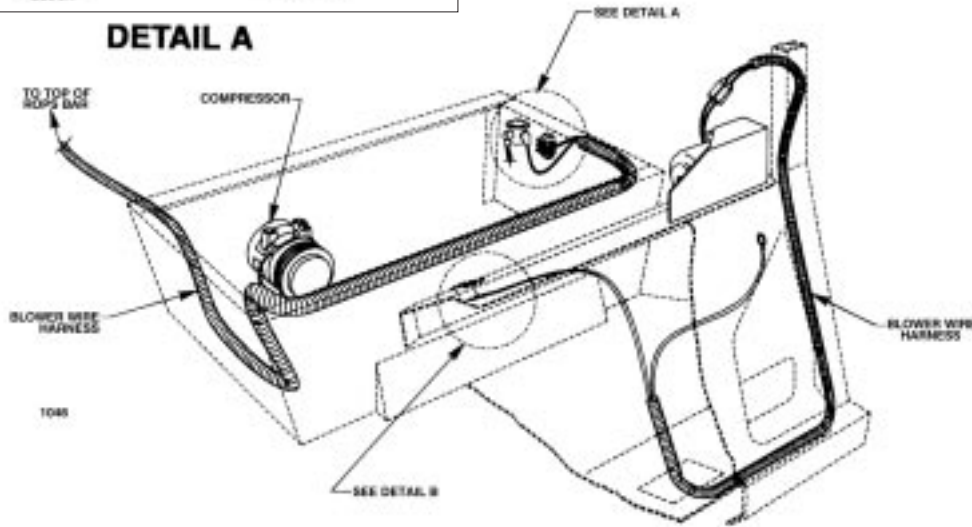
5. Hook Blower Wiring Harness to Accessory Solenoid and route following the path of the vehicle harness, to the R.H. side of the vehicle Frame. Route out the rear of Seat Box and to top of Rops Bar. See FIG. 1 & Wiring Diagram on page 4.



**DETAIL A**



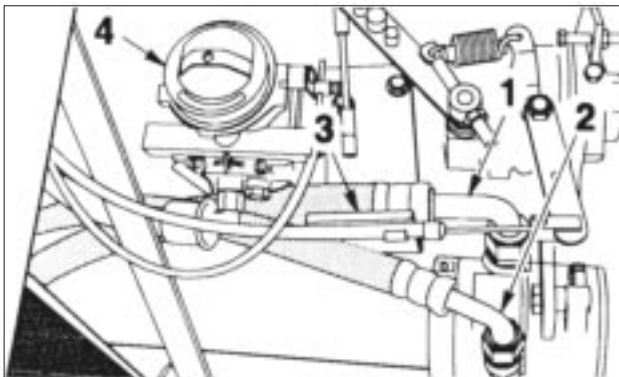
**DETAIL B**



## Compressor A/C Lines:

**Note:** Apply a drop of oil to the Refrigeration line's O-Rings before installation. Use care not to lose O-Rings after removing protective caps from Refrigeration Line fittings.

1. Remove protective caps and connect Refrigeration Line #95-2197 to L.H. (large) port on A/C Compressor. Route refrigeration line inside of Throttle Cable Bracket and away from Carburetor. Route rearward following Blower Wire Harness. See Fig. 6.



**FIG. 6**

- |                          |                           |
|--------------------------|---------------------------|
| 1. Refrig. Line #95-2197 | 3. Throttle Cable Bracket |
| 2. Refrig. Line #95-2200 | 4. Carburetor             |

2. Connect Refrigeration Line #95-2200 to R.H. (small) Port on A/C Compressor. Route to outside of throttle cable bracket away from carburetor. Route rearward following Blower Wire Harness.

## Replace R.H. Seat Box Panel:

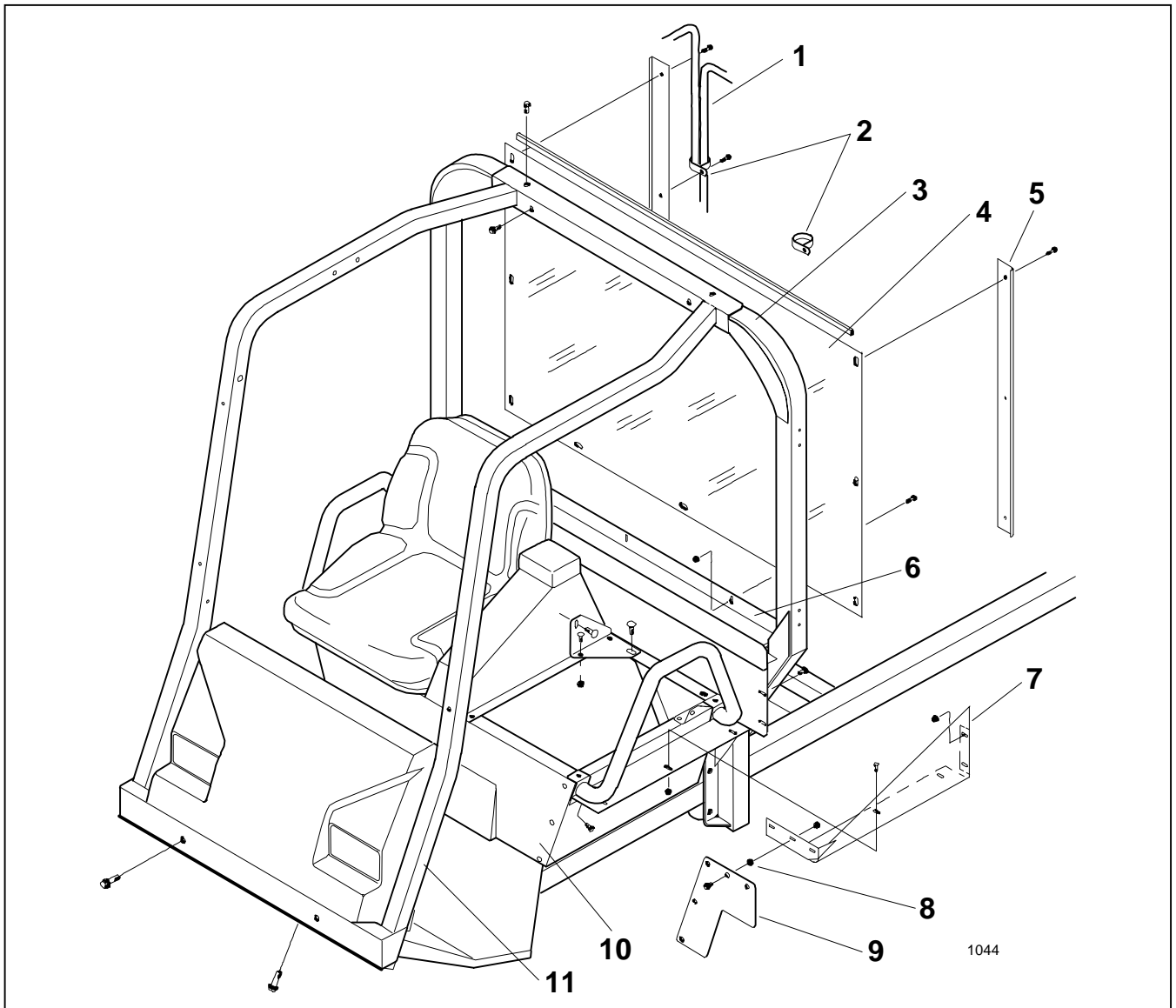
**Note:** For convenience, if installing the Sonic Boom or Foam Marker Kits, install the wiring harnesses for those accessory kits now. Refer to the Installation Instructions provided with those kits for the proper assembly procedures.

1. Replace R.H. Seat Box Panel removed in "A/C Compressor Installation" Step 3, **except** for (3) bolts and hardware on front of R.H. Seat Box Panel.

2. Place nut on lower rear mounting bolt that was installed in "Seat Belt Supports" Step 3. Tighten Securely.

3. Reconnect Wire Harness Assembly and Vacuum Hose to ESC Module and 90° hose to Inlet Tube Assembly that was disconnected in "A/C Compressor Installation" Step 2.

4. Remove Inlet Cap and slide Air Intake Extension onto Air Filter assembly. Use RTV silicone and seal Extension to Air Filter Ass'y. See FIG. 1.



**FIG. 7**

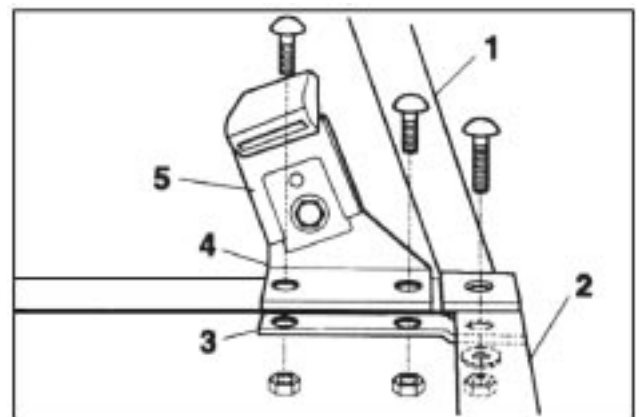
- |                        |                      |                    |                          |
|------------------------|----------------------|--------------------|--------------------------|
| 1. Refrigeration Hoses | 4. Rear Window       | 7. L.H. Side Panel | 10. Front Seat Box Panel |
| 2. 'R' Clamps          | 5. Rear Window Clamp | 8. Spacer          | 11. Front Bar Ass'y      |
| 3. ROPS Bar            | 6. Rear Cab Panel    | 9. Rubber Flap     |                          |

5. Install Inlet Cap onto Air Intake Extension.

### Seat Belt Buckle Installation:

1. Remove rear carriage bolt and nut securing R.H. Hip restraint to rear of Seat Box Panel; DISCARD BOLT and SAVE NUT and WASHER for future use. Install Seat Belt Support Strap under Seat Box Panel and R.H. Outside Seat Belt Support on top of Panel. Secure with (2) 5/16" x 3/4" carriage bolts and (2) flange locking nuts. Replace bolt removed earlier with 5/16" x 1 1/4" carriage bolt and use existing nut and washer. Tighten fasteners securely. See FIG. 8. **(Repeat on L.H. Side).**

2. Secure Seat Belt Buckle Ass'y to Outside Belt Support with (1) 7/16" x 1 1/4" capscrew and flange locking nut.



**FIG. 8**

- |                            |                                   |
|----------------------------|-----------------------------------|
| 1. R.H. Hip Restraint      | 4. R.H. Outside Seat Belt Support |
| 2. Seat Box Panel          |                                   |
| 3. Seat Belt Support Strap | 5. Seat Belt Buckle Ass'y         |

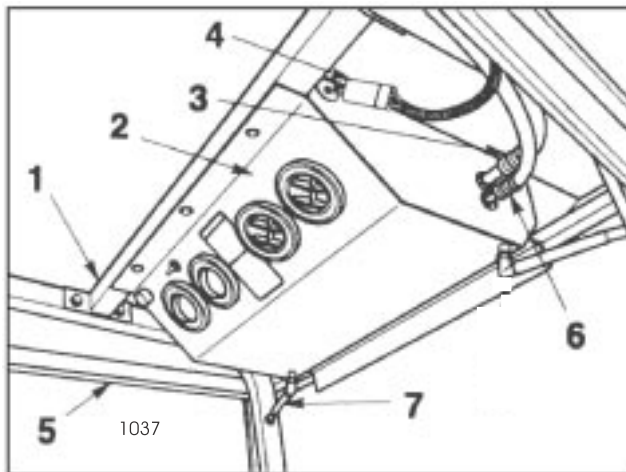
## Side Panel Installation:

1. Mount Cab L.H. Side Panel assembly to L.H. Seat Box Panel. See FIG. 7.
  - a. Remove (2) side carriage bolts from L.H. Hip Restraint.
  - b. Secure L.H. Side Panel to L.H. Seat Box Panel with the (2) carriage bolts removed from Hip restraint in Step a.
  - c. Secure L.H. Seat Box Panel, Front Seat Box Panel, and Rubber Flap with 5/16" x 3/4" capscrews, Spacers, and flange locknuts.
  - d. Secure L.H. Side Panel to Rear Cab Panel with (2) 5/16" x 3/4" short shouldered carriage bolts and flange locknuts.
2. Repeat Steps 'a. - d.' for R.H. Side of Vehicle.

## Blower & Cover Installation:

**Note:** Apply drop of oil to Refrigeration Line O-Rings before installation. Use care not to lose O-Rings after removing protective caps from Refrigeration Line fittings.

1. Set Enclosure Cover on top of the Rops Bar/ Front Bar Assembly. Hook the rear of the Enclosure Cover over the back of the Rops Bar and slide Cover forward. See FIG. 12.



**FIG. 9**

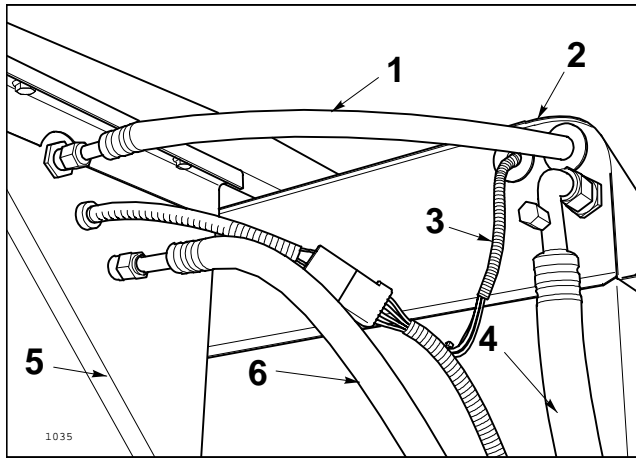
- |                               |                               |
|-------------------------------|-------------------------------|
| 1. Cross Tube Ass'y           | 5. Enclosure Cover            |
| 2. Blower                     | 6. Refrigeration Hose 95-2199 |
| 3. Refrigeration Hose 95-2198 | 7. Condensate Line            |
| 4. Blower Wire Harness        |                               |

2. Remove protective cap and connect Refrigeration Hose 95-2198 (large dia.) to top port located on R.H. side of Blower Assembly (FIG 9).
3. Remove protective cap and connect Refrigeration Hose 95-2199 (small dia.) to bottom port located on R.H. side of Blower Assembly.
4. Loosely secure front of Blower Ass'y to Enclosure Cover Assembly with (3) 1/4" flange screws.
5. Swing Blower Assembly up and into place. Loosely secure to Cross Tube Assembly with (3) 1/4" flange screws. See FIG. 9.
6. Slide Cross Tube forward as far as possible and secure with (4) 3/8" x 1" capscrews.
7. Tighten Blower Mounting Securely.

## Condenser Installation:

1. Place Condenser Mount Angles on top of the Enclosure Cover Assembly. Loosely secure Angles to the Cross Tube Assembly and Rops Bar with (4) 3/8" x 1" capscrews (2 per angle). See FIG. 12.
2. Secure Condenser to Condenser Mount Angles using (4) 3/8" x 1" capscrews and flange locknuts. See FIG. 12.
3. Tighten all fasteners securely.
4. Wrap hose insulation provided with kit around large dia. hose (95-2198) extending from blower housing. Route large dia. hose from Blower Ass'y through 1" dia. hole in rear of Enclosure Cover. Tighten jam nut on refrigeration line after inserting through rear of Enclosure Cover.
5. Route Refrigeration Hose 95-2199 from Blower Assembly through 1-1/4" dia. hole in rear of Enclosure Cover and connect to Condenser Ass'y as illustrated in FIG 10.





**FIG. 10**

- |                                   |                                   |
|-----------------------------------|-----------------------------------|
| 1. Refrigeration Hose<br>#95-2199 | 4. Refrigeration Hose<br>#95-2200 |
| 2. Enclosure Cover                | 5. Condenser Ass'y                |
| 3. Blower Wire Harness            | 6. Refrigeration Hose<br>#95-2197 |

6. Connect Refrigeration Hose #95-2200 at rear of Enclosure Cover at blue service port. See FIG. 10.

7. Connect Refrigeration Hose #95-2197 to Condenser Assembly.

8. Connect Blower Wire Harness to Condenser Ass'y. Insert Wire Harness through hole in rear of Enclosure Cover and connect to Blower Ass'y. See FIG. 9 and FIG. 10.

### Gas Springs Installation:

1. Mount L.H. and R.H. Door Backing Angle Assemblies with foam side out onto Enclosure Cover Assembly using (6) 3/8" flange screws and flange locknuts. See FIG. 12.

2. Mount Gas Spring Support Bracket to each side of Enclosure Cover Assembly using (2) two 5/16" flange locking bolts. See FIG. 12.

### Windshield Installation:

1. Loosely mount Lower Windshield Mount Assembly to Front Bar Ass'y using (3) 1/4" x 3/4" flange screws. See FIG. 12.

2. Fasten Windshield to Front Bar Ass'y using (2) Windshield Clamps and the Lower Windshield Mount. Secure with (8) 1/4" x 3/4" flange screws and (2) flange locknuts. See FIG. 12.

3. From inside of Cab, insert Wiper Arm Shaft on Wiper Motor through hole in Lower Windshield Mount and Windshield. Secure with rubber gasket, washer, and nut. Secure R.H. side of Windshield Wiper Motor to Lower Windshield Mount with 1/4" x 3/4" flange screw and flange locknut. Slide

Windshield Wiper Arm onto Windshield Wiper Motor shaft. **NOTE: Be sure that the Wiper Arm is 5° above the horizontal position when installed to insure proper operation.**

4. Connect Wiper Motor Wire Harness to Windshield Wiper Motor and route down the side of the Rops Bar, under floor and up through Harness opening. Route black wire over to ground stud on drivers side support post and secure with existing nut. Route red wire to Coolant Temperature Gauge and attach to positive(+) terminal (connection with green wire w/red stripe from vehicle harness). See Wiring Diagram on Page 4.

5. Remove the (2) 1/4" flange screws in the lower Door Backing Angle on the L.H. Front Rops post. Place (2) 2412-91 R-Clamps around the Wiper Motor Wire Harness and secure to the Lower Door Backing Angle and L.H. Front Rops using (2) flange screws just removed.

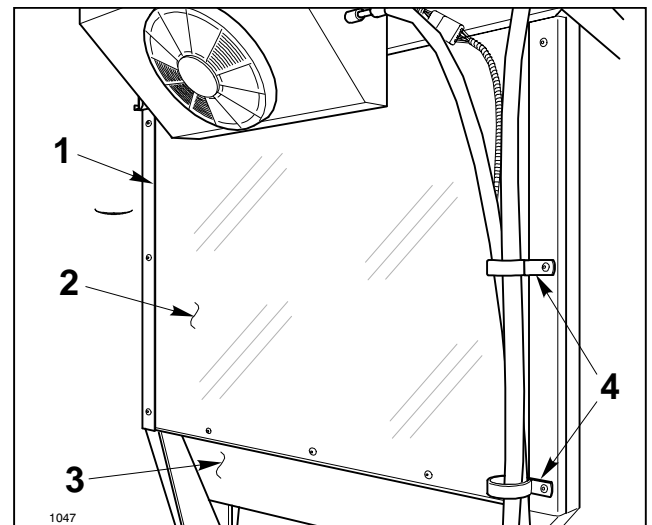
6. Tighten all hardware securely.

### Rear Window & Doors Installation:

**NOTE: All hardware is to be initially installed loosely, unless otherwise stated, for ease of fit and adjustment.**

**NOTE: Two people may be needed for installation of Rear Window and Doors.**

1. Slide Rear Window into Enclosure Cover Assembly, making sure the top of the Rear Window is in the groove. Secure Rear Window to Rear Rops Bar and Rear Cab Panel using (2) Rear Window Clamps, (2) R-Clamps, (9) 1/4" flange screws and (3) flange locknuts. **NOTE: The (3) screws going through the Rear Cab Panel and bottom of Rear Window require the (3) flange locknuts.** Start at the top and work down when tightening screws. See FIG. 11.



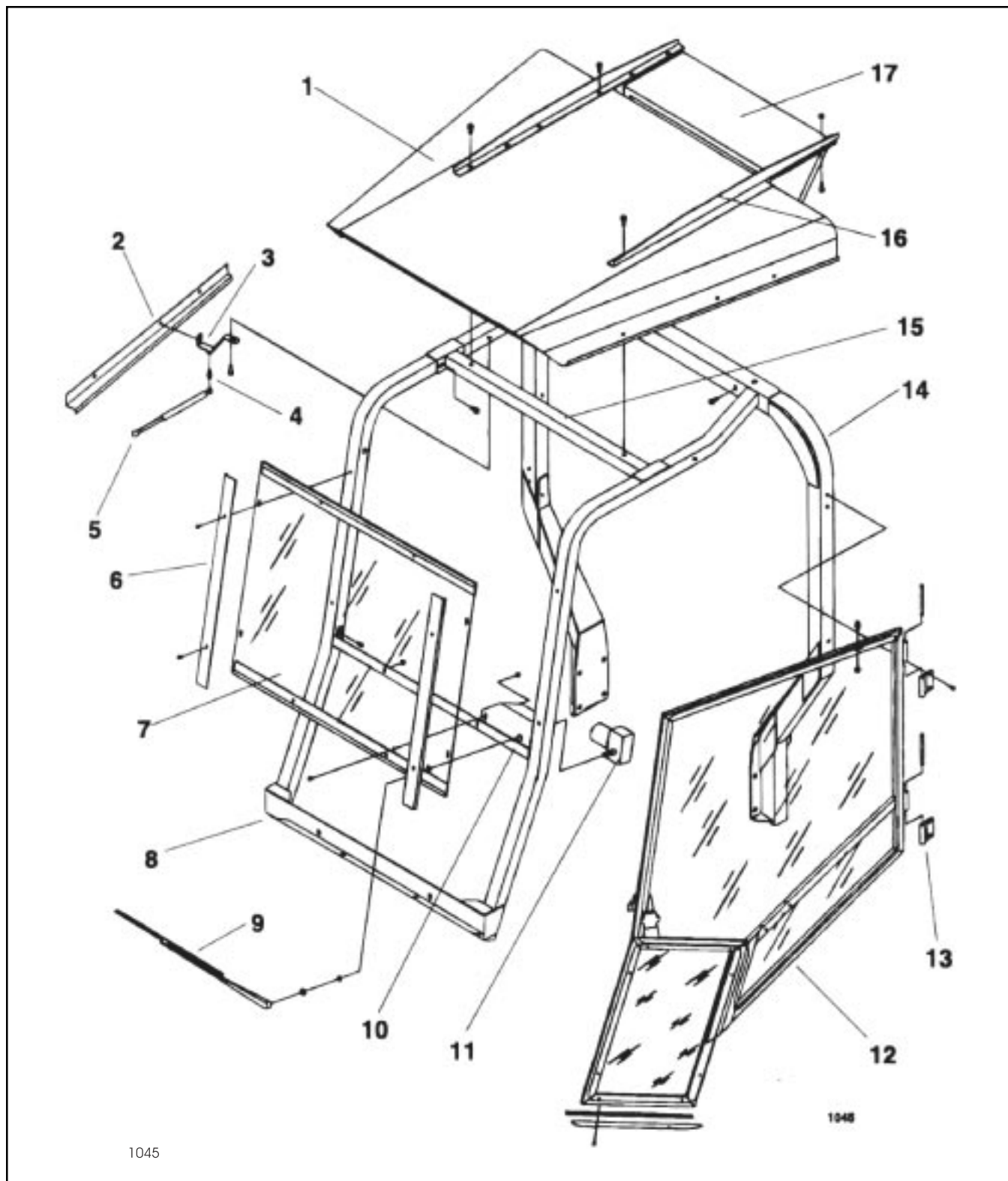
**FIG. 11**

- |                      |                   |
|----------------------|-------------------|
| 1. Rear Window Clamp | 3. Rear Cab Panel |
| 2. Rear Window       | 4. R-Clamps       |

2. Secure Refrigeration Hoses at back of R.H. Rops with (2) large R-Clamps. See FIG. 11.

3. Loosely fasten Door Hinges to ROPS Bar using 1/4" x 3/4" capscrews. Mount Doors to Hinges using (4) four 5" Clevis Pins. See FIG. 12.

**NOTE: Steps 3, 4 & 5 refer to both the L.H. and R.H. Doors.**



**FIG. 12**

- |                            |                         |                            |                            |
|----------------------------|-------------------------|----------------------------|----------------------------|
| 1. Enclosure Cover         | 6. Windshield Clamp     | 10. Lower Windshield Mount | 14. ROPS Bar               |
| 2. R.H. Door Backing Angle | 7. Windshield           | 11. Windshield Wiper Motor | 15. Cross Tube             |
| 3. Gas Spring Support      | 8. Front Bar Ass'y      | 12. L.H. Door Ass'y        | 16. Condenser Mount Angles |
| 4. Ball Stud               | 9. Windshield Wiper Arm | 13. Door Hinge             | 17. Condenser              |
| 5. Gas Spring              |                         |                            |                            |



**NOTE: The Door Backing Angles are slotted for adjustment.**

4. All areas around door need to be adjusted to insure a snug fit, it is suggested that the Plate at the bottom of the door be one of the final adjustments.

**5. TIGHTEN ALL HARDWARE SECURELY.**

6. Locate the Gas Springs and remove the retaining clip from each Gas Spring. Save retaining clips for future installation.

7. Attach Gas Springs to Right and Left Door Assemblies and Enclosure Cover by snapping socket end of Spring onto Ball Stud on Door Brackets. **NOTE: The Rod End from the Gas Spring will attach to the Ball Stud on the Door. The Gas Spring Body will attach to the Ball Stud on the Gas Spring Support. See FIG. 12.**

8. After installation of Gas Springs, reinstall retaining clips onto Gas Spring body where earlier removed.

**NOTE: No retaining clip is required on Rod End to allow for easier Door removal.**

**IMPORTANT! DO NOT USE KNIVES, BLADES, OR SCRAPERS TO REMOVE THE PROTECTIVE PAPER AS THIS WILL SCRATCH OR CUT THE DOORS AND WINDOWS!**

9. Remove the protective paper from the Windshield, Rear Window, and Doors by grasping paper at one corner and gently pulling away the protective paper.

**LATCH ADJUSTMENT:**

1. Close doors with Latch in the "up" position.

2. Rotate Door Latch Handle towards Door Latch Plate. If Door Latch Handle fails to contact Door Latch Plate, it may be necessary to slightly bend the Door Latch in order to secure Door to Door Latch Plate.

3. Reconnect negative cable to battery.

**System Charging:**

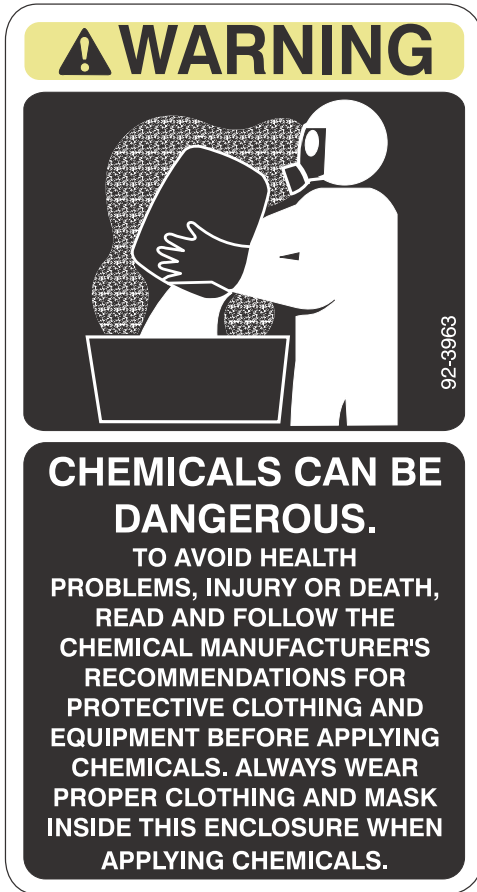
The Federal "Clean Air Act" of 1992 requires that anyone who services a vehicle's air conditioning system must be certified to perform any such work. Your regional EPA (Environmental Protection Agency) may supply you with more details regarding these regulations, certification programs and/or agencies authorized to perform vehicle air conditioning certification.

The air conditioning system on this unit should be charged by a certified automotive A/C technician. The system should be evacuated for a minimum of 45 minutes prior to charging. The system capacity is approximately 3.25 lbs. of R134a refrigerant. The serviceable parts are shown in the Parts List.

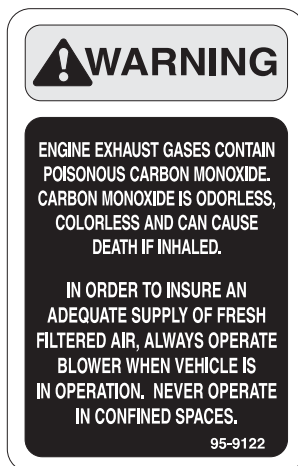
Each compressor is delivered filled with the specified quantity of compressor oil. A label describing the amount and type of compressor oil is attached to the compressor.

## SAFETY INSTRUCTIONS

The following safety and instruction decals are installed on the Cab. If any become damaged or illegible, replace them. Decals and part numbers are listed below and in the parts catalog. Order replacements from your Authorized Toro Distributor.



Part No. 92-3963  
Located on Fan  
Enclosure



Part No. 95-9122  
Located on Fan  
Enclosure



Part No. 92-3888: Located on the  
inside of the Rear Rops Bar - L.H.

## SAFETY INSTRUCTIONS

The following safety and instruction decals are installed on the Cab. If any become damaged or illegible, replace them. Decals and part numbers are listed below and in the parts catalog. Order replacements from your Authorized Toro Distributor.



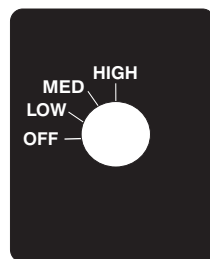
Part No. 42961  
Located on Door  
Latch Handles



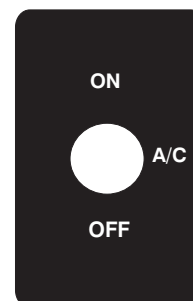
Part No. 87-5940: Located  
below Decal No. 92-3888

# MULTI PRO 5500

Part No. 94-7133 Located on Cab Cover Assembly  
Right and Left Side



Part No. 104-8952 Located around  
Blower Fan.



Part No. 104-8953 Located  
around Air Conditioner  
Knobs.

## NOTES: