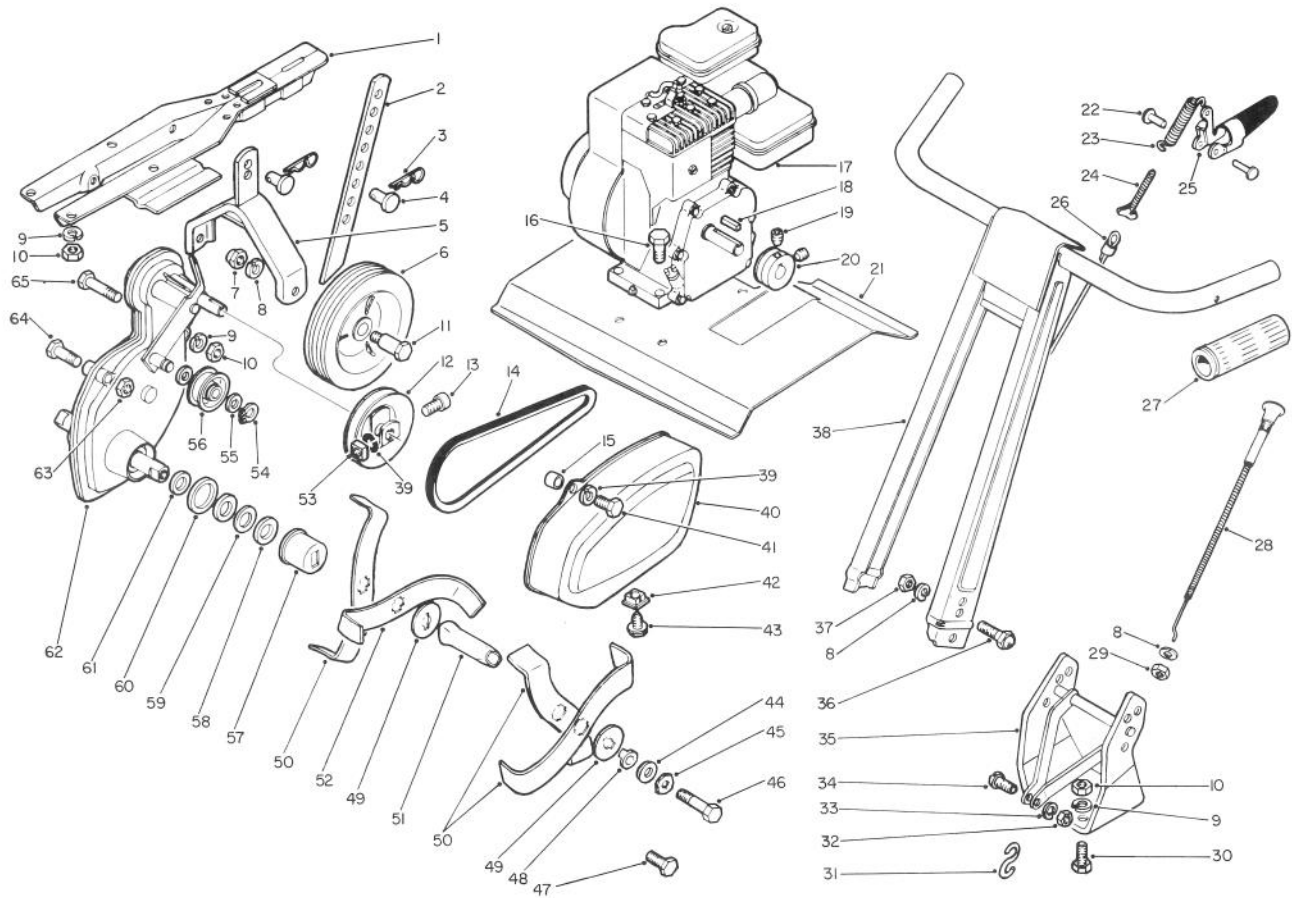


# TORO®

MODEL NO. 58050-3000001 &amp; UP

## PARTS CATALOG

### TORO® 3 HP TILLER/CULTIVATOR



### TILLER ASSEMBLY

Ref. No.	Part No.	Description	No. Used
1	48-0940	Frame	1
2	47-8660	Depth Stick	1
3	47-7790	Spring Clip	2
4	47-7820	Clevis Pin	2
5	48-0950	Wheel Hanger	1
6	47-8340	Wheel & Tire Assembly	2
7	32152-2	Locknut	2
8	3253-5	Lockwasher	7
9	3253-4	Lockwasher	9
10	3217-6	Hex Nut	9
11	47-8290	Shoulder Bolt	2
12	47-8620	Pulley Assembly	1
13	47-8880	Socket Hd. Capscrew	1
14	47-8630	V-belt	1
15	47-7970	Spacer	1

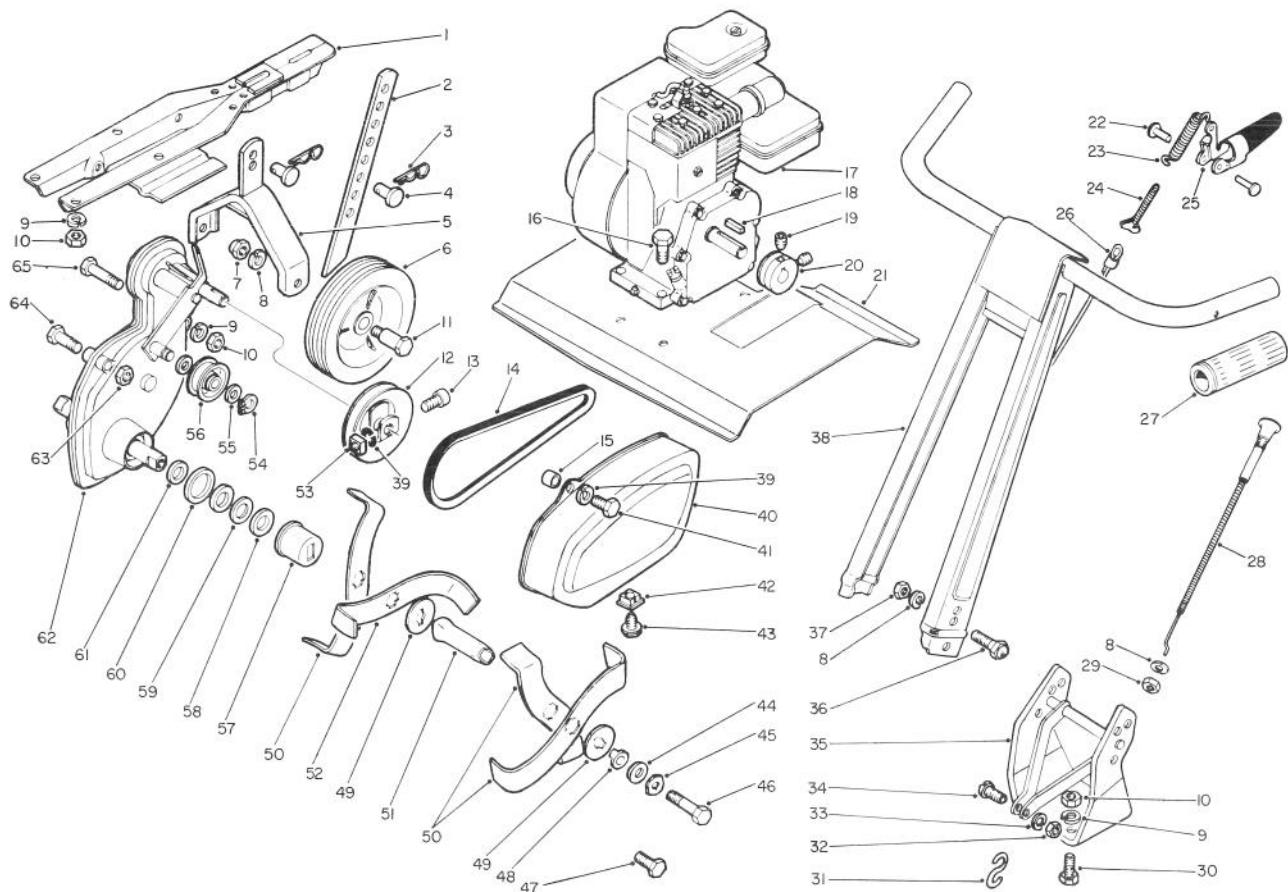
Ref. No.	Part No.	Description	No. Used
16	322-7	Hex Hd. Capscrew	4
17	47-7680	Engine	1
18	10-8040	Key, Square	1
19	3245-7	Set Screw, Socket Hd.	2
20	47-8410	Engine Pulley	1
21	47-8720	Tine Shield	1
22	47-8390	Rivet Assembly	1
23	48-0290	Spring — Adjuster	1
24	48-0300	Stud — Adjustment	1
25	48-0260	Clutch Grip	1
26	48-0970	Clutch Cable Assembly	1
27	48-1130	Grip	2
28	47-8640	Throttle Control	1
29	3219-3	Hex Nut	1
30	322-3	Hex Hd. Capscrew	4

COPYRIGHT © ALL RIGHTS RESERVED

The Toro Company — 1983

MINNEAPOLIS, MN 55420 — U.S.A.

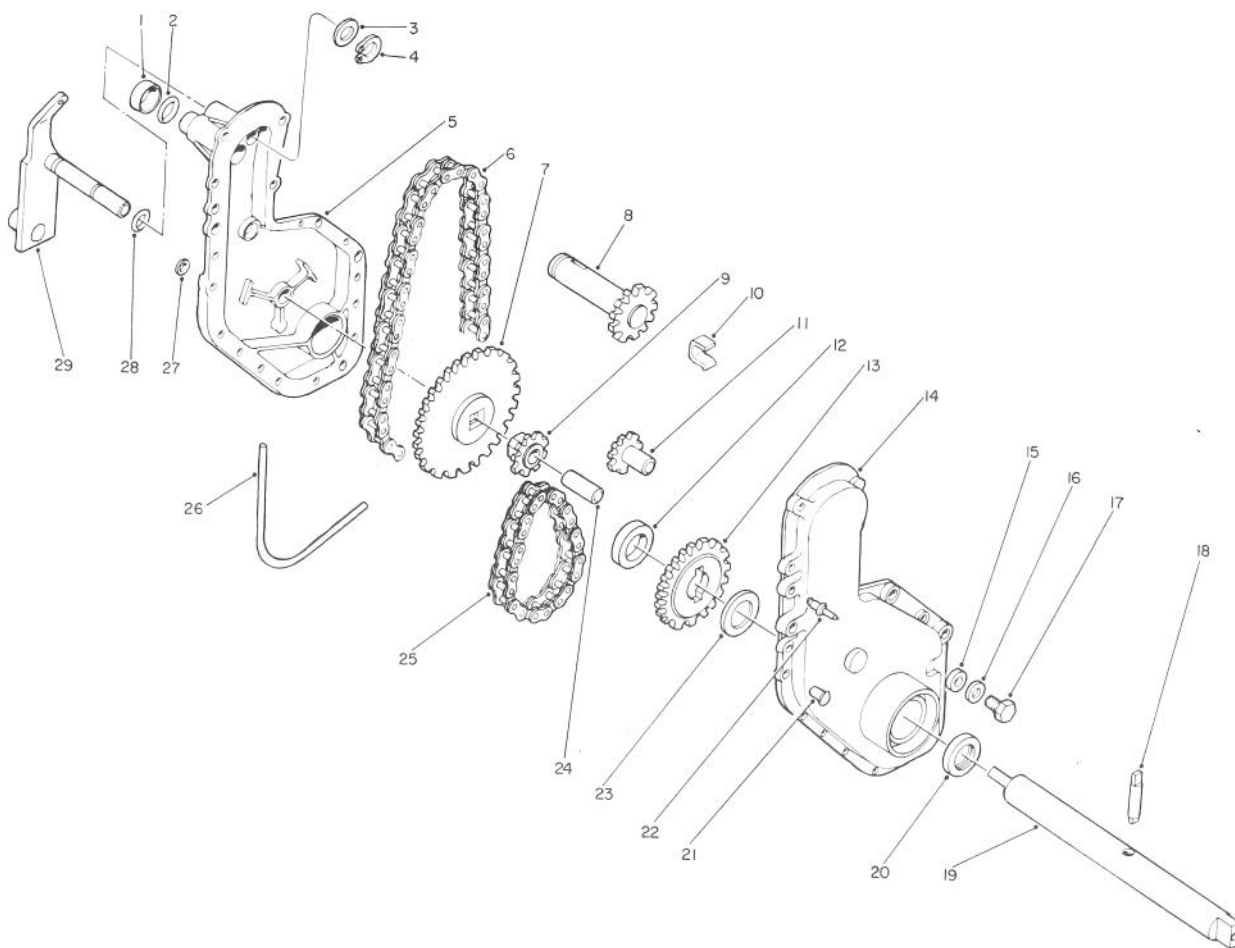
PRICE \$1.00



## TILLER ASSEMBLY (Continued)

Ref. No.	Part No.	Description	No. Used
31	47-9510	'S' Hook	1
32	32153-1	Locknut	1
33	3253-2	Lockwasher	1
34	47-8870	Machine Screw	1
35	48-0960	Support — Handle	1
36	47-7800	Acorn Hd. Bolt	4
37	3217-7	Hex Nut	4
38	48-1120	Handle W/Decal	1
39	3253-3	Lockwasher	2
40	47-8680	Belt Guard W/Decal	1
41	321-10	Hex Hd. Capscrew	1
42	47-8650	Expansion Nut	1
43	47-8690	Hex Hd. Tapping Screw	1
44	48-1010	Washer	2
45	47-8400	Pyramidal Lockwasher	2
46	47-8700	Tine Bolt	2
47	323-4	Hex Hd. Capscrew	2
48	47-8490	Bushing	2

Ref. No.	Part No.	Description	No. Used
49	47-8740	Tine Washer	6
50	48-0910	Tine R.H.	4
51	47-8530	Tine Extension	2
52	48-0920	Tine L.H.	4
53	32107-11	Square Nut	1
54	32120-64	Retaining Ring	1
55	47-8110	Washer	2
56	47-8500	Idler Pulley	1
57	47-8480	Seal Collar Assembly	2
58	47-8450	Felt Seal	4
59	47-8430	Washer	2
60	47-8440	Felt Seal	2
61	47-8260	Seal	2
62	48-0930	Chain Case Assembly	1
63	32152-1	Locknut — Jam	1
64	322-8	Hex Hd. Capscrew	1
65	322-11	Hex Hd. Capscrew	1



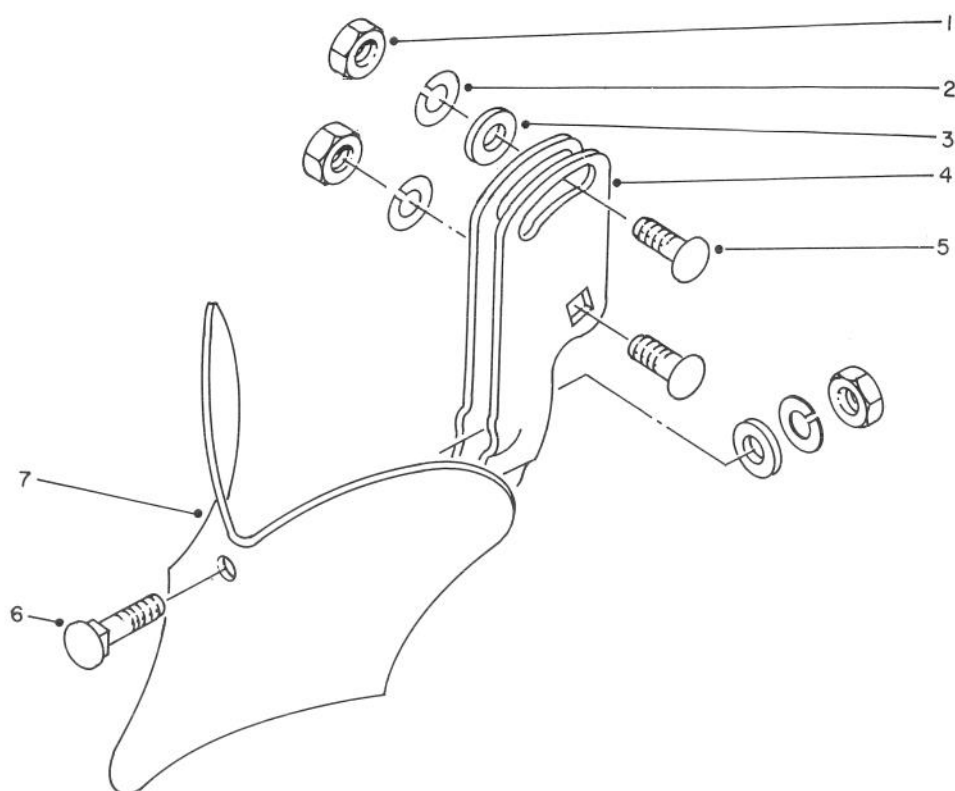
## CHAIN CASE ASSEMBLY NO. 48-0930

Ref. No.	Part No.	Description	No. Used
1	47-8570	Seal Cup	1
2	47-8560	O-Ring	1
3	49-3700	Idler Washer	1
4	49-3710	Retaining Ring	1
5	49-3620	Chain Case L.H. W/Bearings	1
6	47-8610	#35 Rollerless Chain	1
7	49-3680	Sprocket — 42 Tooth	1
8	49-3630	Input Shaft	1
9	49-3640	Sprocket — 8 Tooth	1
10	47-8540	'U' — Clip	1
11	47-8580	Idler Sprocket — 9 Tooth	1
12	47-9450	Washer	1
13	49-3650	Sprocket — 19 Tooth	1
14	47-8510	Chain Case R.H.	1
15	47-8760	Nylon Washer	1
16	3256-23	Washer	1

Ref. No.	Part No.	Description	No. Used
17	322-1	Hex Hd. Capscrew	1
18	47-8590	Drive Pin	1
19	49-3660	Tine Shaft	1
20	47-8260	Oil Seal	2
21	47-8460	Rivet	15
†*	3251-4	Machine Screw Rd. Hd.	15
22	47-8770	Pop Rivet	2
23	47-8300	Thrust Washer	1
24	47-8600	Sprocket Shaft	1
25	49-3670	#40 Roller Chain	1
26	47-8550	Gasket	1
27	3256-49	Washer	15
†*	3255-5	Washer Lock External Tooth	15
†*	3217-26	Nut Hex Hd. Machine Screw	15
28	49-3690	O-Ring	1
29	49-3720	Idler Arm	1

\*Not Illustrated

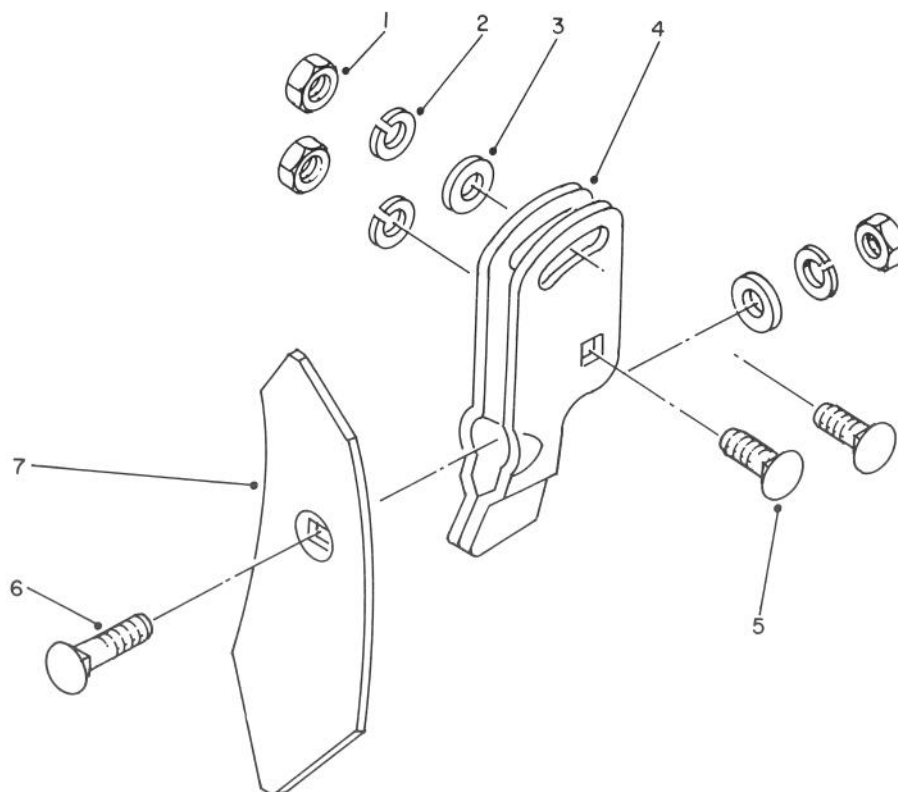
†Service Replacement Parts for Item #21 & 27.



## 8" FURROW OPENER MODEL 59708 (Optional)

Ref. No.	Part No.	Description	No. Used
1	3217-7	Hex Nut	3
2	3253-5	Lockwasher	3
3	3256-24	Washer	2
4	49-3390	Holder	1

Ref. No.	Part No.	Description	No. Used
5	3231-25	Carriage Bolt	2
6	49-3410	Plow Bolt	1
7	49-3400	Shovel	1

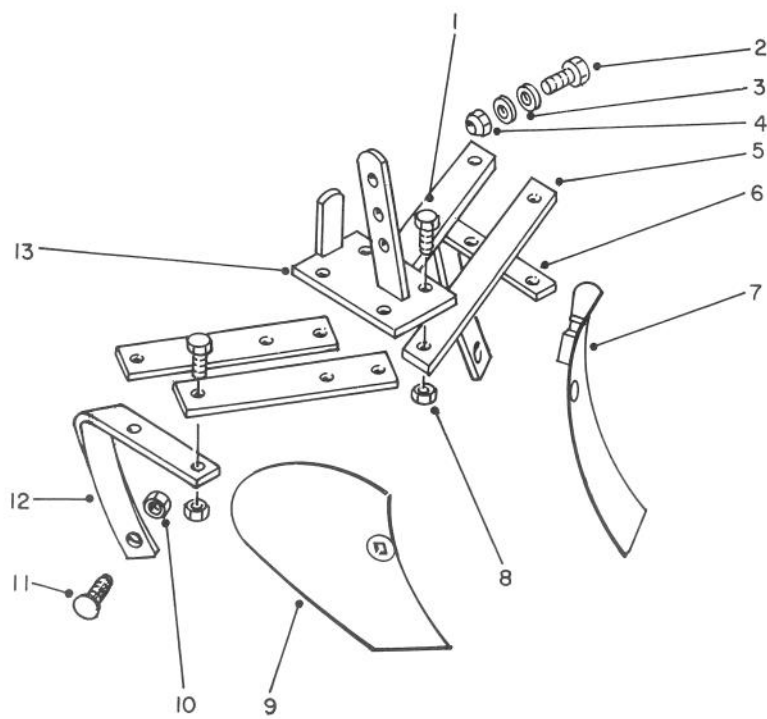


## 2" FURROW OPENER MODEL 59709 (Optional)

Ref. No.	Part No.	Description	No. Used
1	3217-7	Hex Nut	3
2	3253-5	Lockwasher	3
3	3256-24	Washer	2
4	49-3390	Holder	1

Ref. No.	Part No.	Description	No. Used
5	3231-25	Carriage Bolt	2
6	49-3410	Plow Bolt	1
7	49-3420	Shovel	1

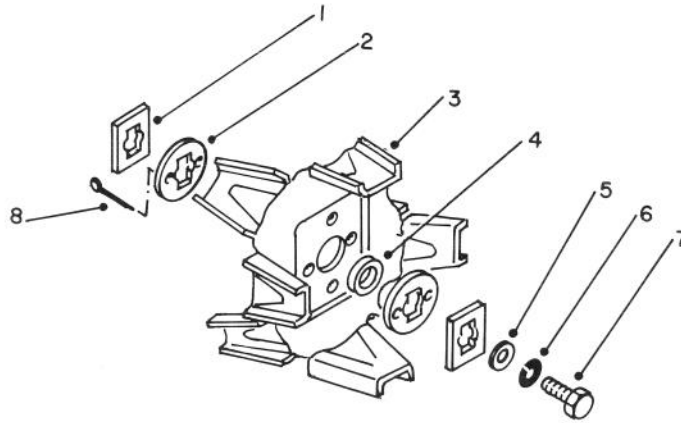
[illegible]



## TURNING PLOW MODEL 59746 (Optional)

Ref. No.	Part No.	Description	No. Used
1	322-5	Hex Hd. Capscrew	8
2	321-6	Hex Hd. Capscrew	1
3	3256-1	Washer	2
4	32157-4	Locknut-Hex Cone	1
5	49-3310	Attachment Bar	4
6	49-3340	Blade Holder — L.H.	1
7	49-3360	Turning Plow — L.H.	1

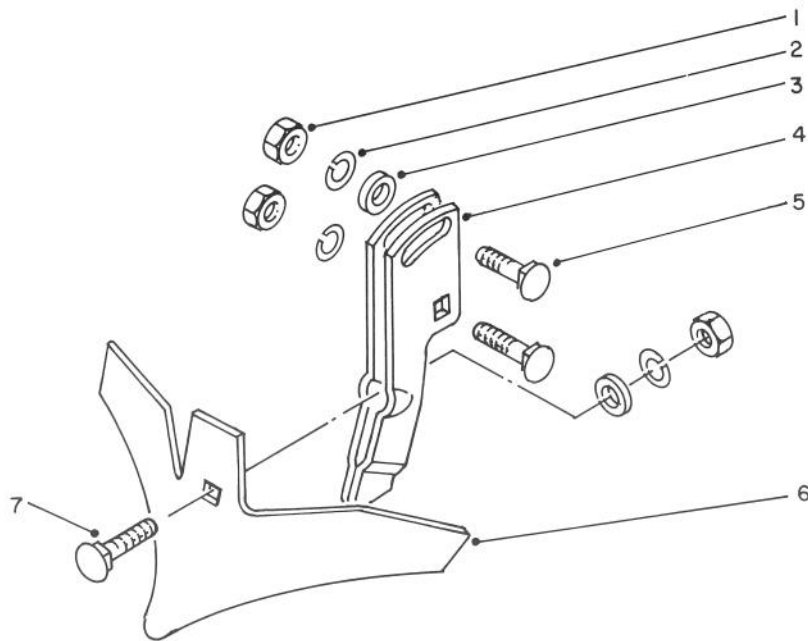
Ref. No.	Part No.	Description	No. Used
8	32152-1	Locknut	8
9	49-3350	Turning Plow — R.H.	1
10	32152-2	Locknut	2
11	49-3370	Plow Bolt	2
12	49-3330	Blade Holder — R.H.	1
13	49-3300	Hitch	1



## STEEL WHEELS MODEL 59747 (Optional)

Ref. No.	Part No.	Description	No. Used
1	49-3740	Washer	4
2	47-8740	Washer	4
3	49-3730	Steel Wheel	2
4	49-3750	Spacer	2

Ref. No.	Part No.	Description	No. Used
5	3256-24	Washer	2
6	3253-5	Lockwasher	2
7	323-4	Hex Hd. Capscrew	2
8	3272-10	Cotter Pin	4

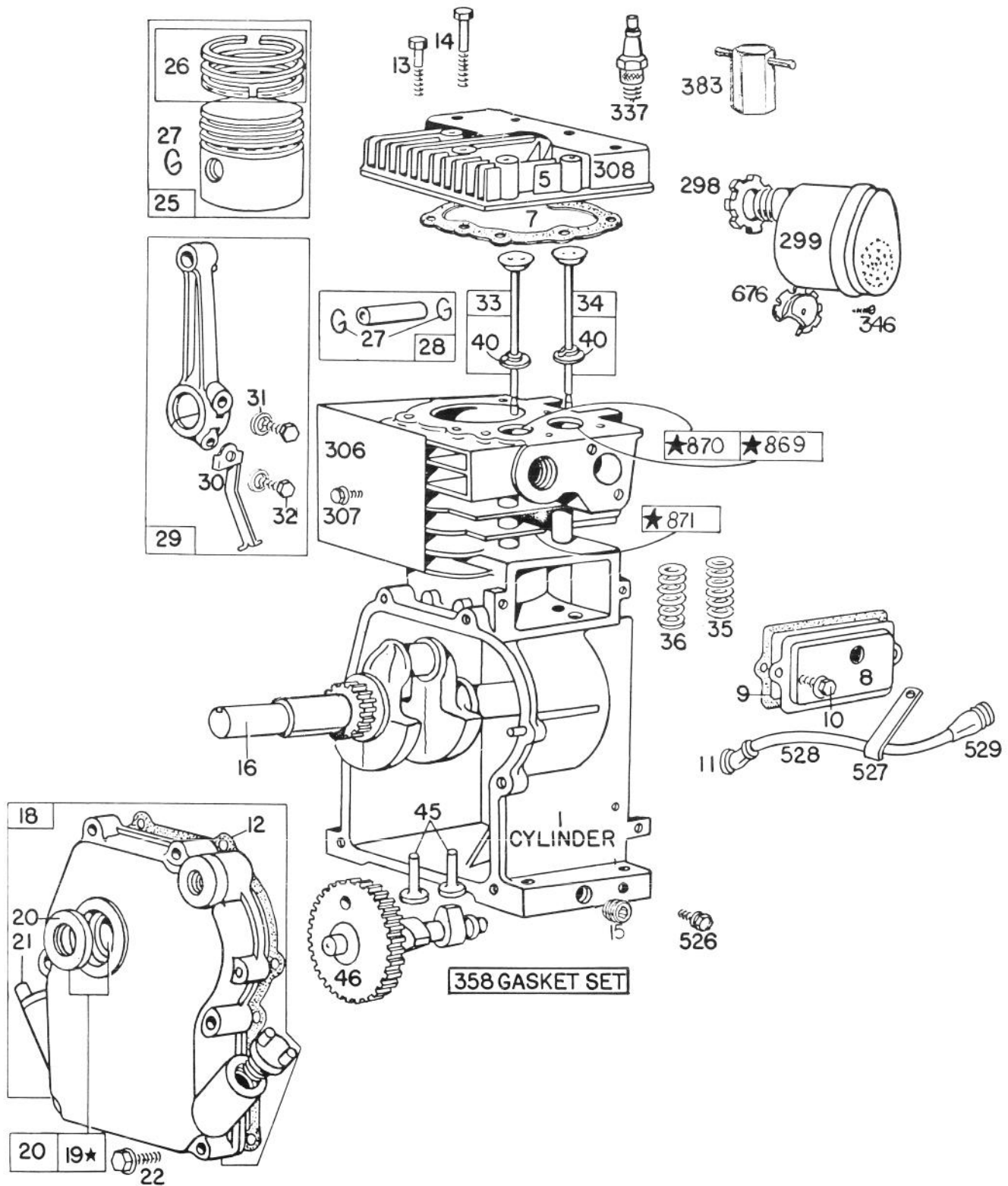


### 15" SWEEP PLOW MODEL 59748 (Optional)

Ref. No.	Part No.	Description	No. Used
1	3217-7	Hex Nut	3
2	3253-5	Lockwasher	3
3	3256-24	Washer	2
4	49-3390	Holder	1

Ref. No.	Part No.	Description	No. Used
5	3231-25	Carriage Bolt	2
6	49-3520	15" Sweep	1
7	49-3410	Plow Bolt	1

# ENGINE BRIGGS & STRATTON MODEL 80202-1651-01



★ REQUIRES SPECIAL TOOLS  
TO INSTALL

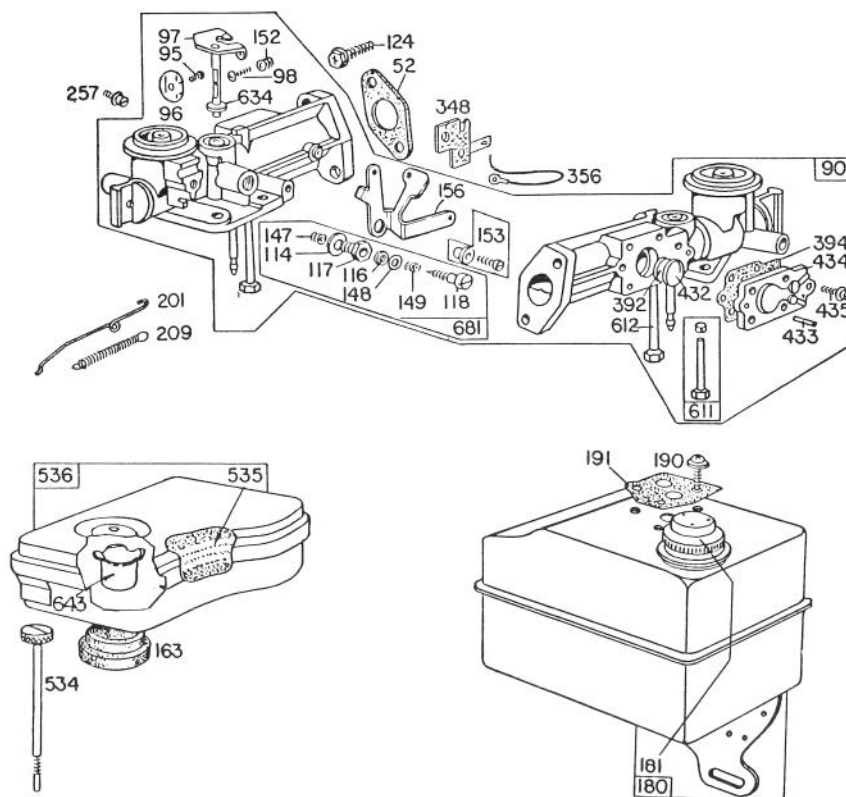
SEE REPAIR INSTRUCTION  
MANUAL

# ENGINE BRIGGS & STRATTON MODEL 80202-1651-01

Ref. No.	Part No.	Description	No. Used
1	395879	Cylinder Assembly	1
5	210812	Head — Cylinder	1
7	*27670	Gasket — Cylinder Head	1
8	294178	Breather — Valve Chamber	1
9	*27549	Gasket — Valve Cover	1
10	93394	Screw — Valve Cover	1
		Mounting Sem	1
11	66578	Grommet — Breather Tube	1
12	*270833	Gasket — Crankcase — .015" thick (Standard)	1
	270895	Gasket — Crankcase — .005" thick	1
	*270896	Gasket — Crankcase — .009" thick	1
13	93111	Screw — Cylinder Head (1-15/16" long)	1
14	93113	Screw — Cylinder Head (2-5/16" long)	1
15	93448	Plug — Oil Drain	1
16	260492	Crankshaft	1
18	394820	Cover Assembly — Crankcase	1
19	293708	Bushing — Crankcase Cover	1
		Note: Bushings require special tools for installation	1
20	299819	Seal — Oil	1
21	66768	Plug — Oil Filler	1
22	93032	Screw — Crankcase	1
		Cover Mounting	1
25	295587	Piston Assembly — Std.	1
	295588	Piston Assembly — .010" O.S.	1
	295589	Piston Assembly — .020" O.S.	1
	295590	Piston Assembly — .030" O.S.	1
		<b>RING SETS:</b>	
		Note: For Chrome Piston	
		Ring Set — standard size — order Part No. 297201.	1
26	294232	Ring Set — Std. Piston	1
	294224	Ring Set — .010" O.S. Piston	1
	294225	Ring Set — .020" O.S. Piston	1
	294226	Ring Set — .030" O.S. Piston	1
27	26026	Lock — Piston Pin	1
28	298909	Pin Assembly — Piston — Standard	1
	298908	Pin Assembly — Piston — .005" O.S.	1

Ref. No.	Part No.	Description	No. Used
29	294367	Rod Assembly — Connecting	
		Note: For Connecting Rod with .020" undersize Crankpin Bore — order No. 296079	1
30	220670	Dipper — Connecting Rod	1
31	222282	Washer (One for each screw)	1
32	92296	Screw — Connecting Rod	1
33	296676	Valve — Exhaust (Grooved Stem — Includes Retainer No. 93312)	1
34	296677	Valve — Intake (Grooved Stem — Includes Retainer No. 93312)	1
35	260552	Spring — Intake Valve	1
36	26478	Spring — Exhaust Valve	1
40	93312	Retainer — Valve Spring	1
		Used with valves with groove in stem.	1
45	230173	Tappet — Valve	1
46	210453	Gear — Cam	1
298	220859	Locknut — Muffler	1
299	392811	Muffler — Exhaust	1
306	220478	Shield — Cylinder	1
307	93490	Screw — Cylinder Shield	1
		Mounting	1
308	220581	Cover — Cylinder Head	1
337	298809	Plug — Spark (with gasket) (1-1/2" High — 37-42 M.M.)	1
346	93705	Screw — Sem	1
358	297275	Gasket Set	1
383	89838	Wrench — Spark Plug	1
526	93686	Screw — Tank	
		Bracket to Cylinder	
		Mounting Sem	
		Uses: 66432 Washer	1
527	221279	Clamp — Breather Tube	1
528	230634	Tube — Breather	1
529	67608	Grommet — Breather Tube	1
676	393760	Deflector — Muffler	1
869	210879	Seat — Intake Valve (Standard)	1
870	211291	Seat — Exhaust Valve (Standard)	1
871	63709	Guide — Exhaust Valve	1

\*Included in Gasket Set — Part No. 297275.

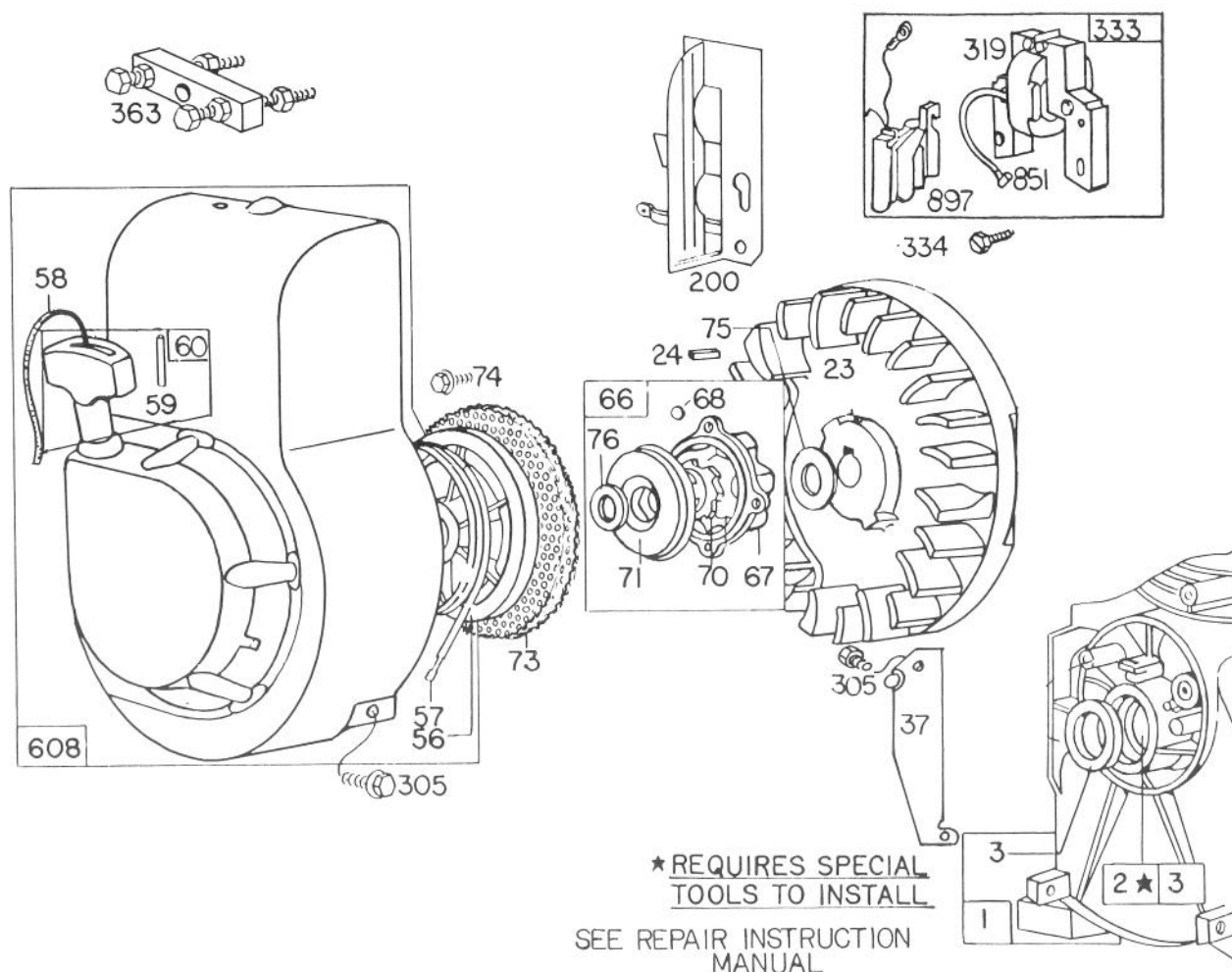


## ENGINE BRIGGS & STRATTON MODEL 80202-1651-01 (Continued)

Ref. No.	Part No.	Description	No. Used
52	*27355	Gasket — Intake Elbow Mtg.	2
90	393975	Carburetor Assembly	1
95	93499	Screw — Throttle Valve Mounting Sem	1
96	211203	Valve Throttle	1
97	297961	Shaft and Lever — Throttle	1
98	93524	Screw — Machine, Rd. Hd.	1
114	66594	Gasket — Needle Valve Nut	1
116	65978	Packing — Needle Valve	1
117	230590	Nut — Needle Valve	1
118	23433	Valve — Needle	1
124	93357	Screw — Hex Hd.	1
147	230591	Seat — Needle Valve	1
148	22235	Washer — Needle Valve	2
149	26336	Spring — Needle Valve	1
152	260746	Spring Throttle Adjustment	1
153	298031	Screw — Carburetor Cam and Lever	1
156	222955	Lever — Speed Adjuster	1
163	27660	Gasket — Air Cleaner Mtg.	1
180	299817	Tank Assy. — Fuel	1
181	394818	Cap — Fuel Tank	1
190	93440	Screw — Fuel Tank Mtg.	1
191	*27911	Gasket — Fuel Tank Mtg.	1

Ref. No.	Part No.	Description	No. Used
201	260898	Link — Governor	1
209	260041	Spring — Air Vane Gov.	1
257	93543	Screw — Fil Hd.	1
348	296110	Plate Assembly — Stop Switch Insulator	1
356	391115	Wire — Ground	1
392	260455	Spring — Fuel Pump Diaphragm	1
394	270026	Diaphragm	1
432	221377	Cap — Spring	1
433	93265	Pin — Diaphragm	1
434	210959	Cover — Diaphragm	1
435	93141	Screw — Diaphragm Cover	1
534	93322	Screw — Air Cleaner	1
535	27987	Element — Air Cleaner	1
536	296766	Cleaner Assy. — Air	1
611	297219	Pipe — Fuel (2-5/8" long) Plastic	1
612	296811	Pipe — Fuel (1-5/8" long) Plastic	1
634	270167	Washer — Throttle Shaft (Felt)	1
643	280374	Cup — Air Cleaner	1
681	299060	Needle Valve Kit	1

\*Included in Gasket Set — Part No. 297275.



## ENGINE BRIGGS & STRATTON MODEL 80202-1651-01 (Continued)

Ref. No.	Part No.	Description	No. Used
1	395879	Cylinder Assembly	1
2	293708	Bushing — Cylinder	
		Note: Requires special tools for installation.	1
3	299819	Seal — Oil	1
23	296884	Flywheel — Magneto	1
24	222698	Key — Flywheel	1
37	220971	Guard — Flywheel	1
56	280117	Pulley — Rewind Starter	
57	294303	Spring — Rewind Starter	
58	66694	Rope — Starter	1
59	230228	Pin — Starter Grip	1
60	393152	Grip — Starter Rope	1
66	394558	Clutch Assembly — Rewind Starter	1
67	394897	Housing — Starter Clutch	1
68	63770	Ball — Clutch	1
70	298436	Ratchet — Rewind Starter	1

Ref. No.	Part No.	Description	No. Used
71	221653	Washer — Clutch Retainer	1
73	221661	Screen — Rotating	1
74	93490	Screw — Rotating Screen Mounting	1
75	220865	Washer — Spring	1
76	68238	Washer — Ratchet Sealing	1
200	297310	Blade — Governor	1
305	93158	Screw	1
319	395488	Armature Assembly (Less Trigger Coil)	1
333	395489	Armature — Group	1
334	93381	Screw — Armature Mounting	1
363	19069	Puller — Flywheel (Optional Accessory)	1
608	294259	Starter Assembly — Rewind	1
851	221798	Terminal — Ignition Cable	1
897	394970	Trigger Coil	1

## PRODUCT CHANGES

In an effort to make improvements available to TORO owners as quickly as possible, minor changes are incorporated into Toro's products from time to time that do not become immediately shown in the Parts Catalog. If such a change apparently has been made in your unit, which is not reflected in your manual, see your TORO Distributor or his Authorized TORO Service Dealer for information and part numbers.

## IDENTIFICATION AND ORDERING

### MODEL AND SERIAL NUMBERS

The Tiller has two identification numbers: a model number and a serial number. The two numbers are stamped on a decal which is located on the left side of tiller frame ahead of the wheel bracket. In any correspondence concerning the tiller, supply model and serial numbers to assure that correct information and replacement parts are obtained.

To order replacement parts from an Authorized TORO Service Dealer, supply the following information:

1. Model and serial numbers of the tiller.
2. Part number, description, and quantity of part(s) desired.

**Note:** Do not order by reference number if a parts catalog is being used; use the PART NUMBER.

## The Toro Promise

### A ONE YEAR LIMITED WARRANTY

*The Toro Company promises to repair your TORO Product if defective in materials or workmanship. The following time periods from the date of purchase apply:*

Residential Product . . . . .	1 Year
Residential Products Used Commercially . . .	45 Days

*The costs of parts and labor are included, but the customer pays the transportation costs. Just return any residential product to an Authorized TORO Service Dealer or TORO Distributor.*

Should you feel your TORO Product is defective and wish to rely on The Toro Promise, the following procedure is recommended:

1. Contact any Authorized TORO Service Dealer, TORO Master Service Dealer, or TORO Distributor (the Yellow Pages of your telephone directory is a good reference source).
2. He will either instruct you to return the product to him or recommend another Authorized TORO Service outlet which might be more convenient.
3. Bring the product along with your original sales slip, or other evidence of purchase date, to the service dealer.
4. The servicing dealer will inspect the unit, advise you whether the product is defective and, if so, make all repairs necessary to correct the defect without extra charge to you.

If for any reason you are dissatisfied with the dealer's analysis of the defect or the service performed, you may contact us.

Write:

TORO Consumer Service Department  
8111 Lyndale Avenue South  
Minneapolis, Minnesota 55420

The above remedy of product defects through repair by an Authorized TORO Service Dealer is the purchaser's sole remedy for any defect.

THERE IS NO OTHER EXPRESS WARRANTY. ALL IMPLIED WARRANTIES OF MERCHANTABILITY AND

FITNESS FOR USE ARE LIMITED TO THE DURATION OF THE EXPRESS WARRANTY.

Some states do not allow limitations on how long an implied warranty lasts, so the above limitation may not apply to you.

This warranty applies only to parts or components which are defective and does not cover repairs necessary due to normal wear, misuse, accidents, or lack of proper maintenance. Regular, routine maintenance of the unit to keep it in proper operating condition is the responsibility of the owner.

All warranty repairs reimbursable under The Toro Promise must be performed by an Authorized TORO Service Dealer using Toro approved replacement parts.

Repairs or attempted repairs by anyone other than an Authorized TORO Service Account are not reimbursable under The Toro Promise. In addition, these unauthorized repair attempts may result in additional malfunctions, the correction of which is not covered by warranty.

THE TORO COMPANY IS NOT LIABLE FOR INDIRECT, INCIDENTAL OR CONSEQUENTIAL DAMAGES IN CONNECTION WITH THE USE OF THE PRODUCT INCLUDING ANY COST OR EXPENSE OF PROVIDING SUBSTITUTE EQUIPMENT OR SERVICE DURING PERIODS OF MALFUNCTION OR NON-USE.

Some states do not allow the exclusion or limitation of incidental or consequential damages, so the above limitation or exclusion may not apply to you.

This warranty gives you specific legal rights, and you may also have other rights which vary from state to state.

## COUNTRIES OTHER THAN THE UNITED STATES OR CANADA

Customers who have purchased TORO products exported from the United States or Canada should contact their TORO Distributor (Dealer) to obtain guarantee policies for your country, province or state. If for any reason

you are dissatisfied with your Distributor's service or have difficulty obtaining guarantee information, contact the TORO importer. If all other remedies fail, you may contact us at The Toro Company.

## MAINTENANCE RECORD

[illegible]

## MAINTENANCE RECORD

[illegible]