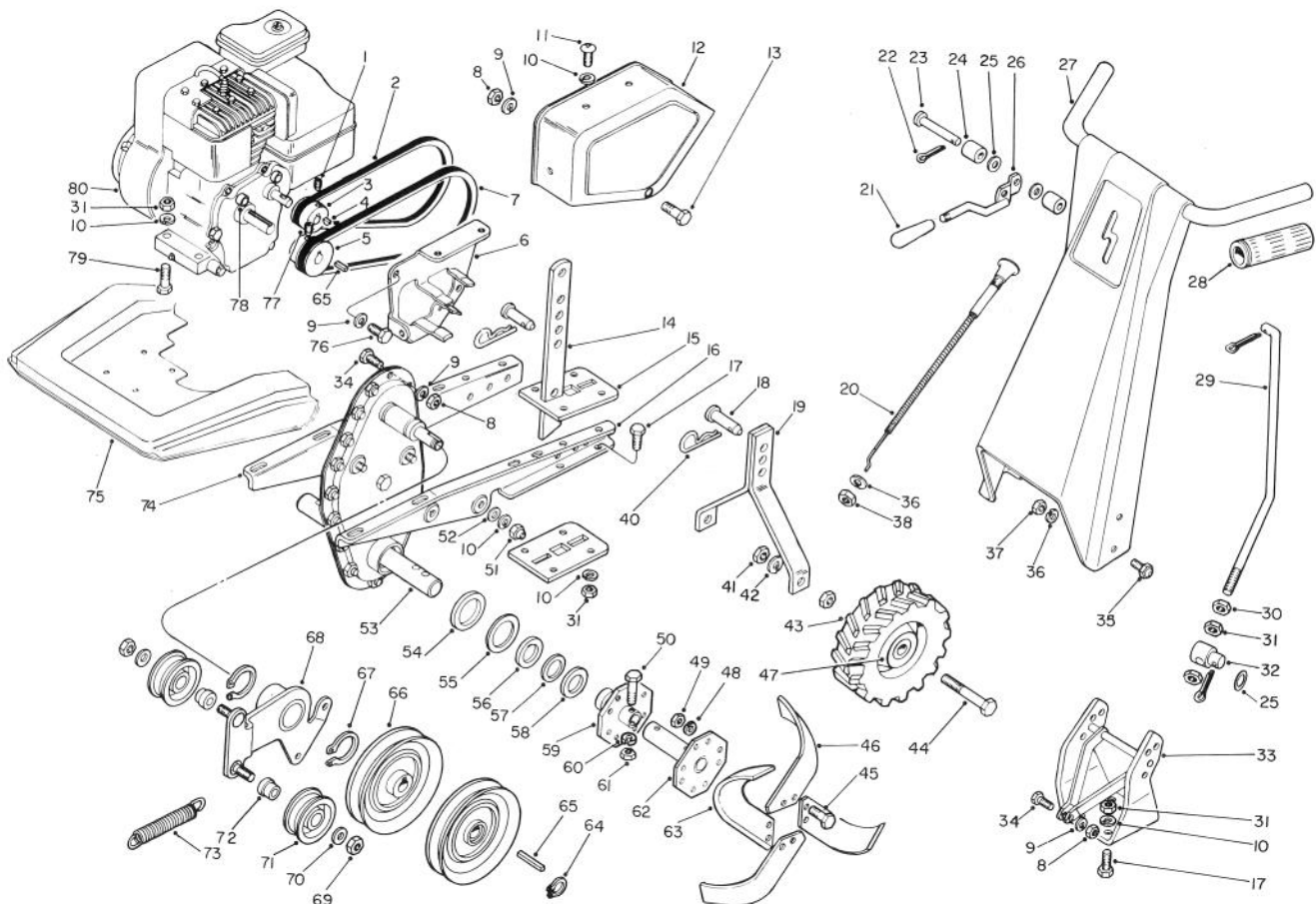


TORO®

MODEL NO. 58070-3000001 & UP

**PARTS
CATALOG****TORO® 5 HP CHAIN DRIVE TILLER****TILLER ASSEMBLY**

Ref. No.	Part No.	Description	No. Used
1	3245-7	Set Screw	2
2	48-0090	V-Belt — Reverse	1
3	47-8990	Pulley — Camshaft	1
4	3257-24	Woodruff Key	1
5	48-1110	Pulley — Engine	1
6	48-0270	Bracket	1
7	47-9540	V-Belt — Forward	1
8	3217-5	Hex Nut	3
9	3253-3	Lockwasher	6
10	3253-4	Lockwasher	23
11	47-8800	Pan Hd. Mach. Screw	3
12	48-1020	Belt Guard w/Decal	1
13	321-3	Capscrew	1
14	47-7990	Depth Control	1
15	47-9730	Plate — Hitch	2
16	47-9720	Frame — L.H.	1
17	322-3	Capscrew	12
18	47-8040	Clevis Pin	2

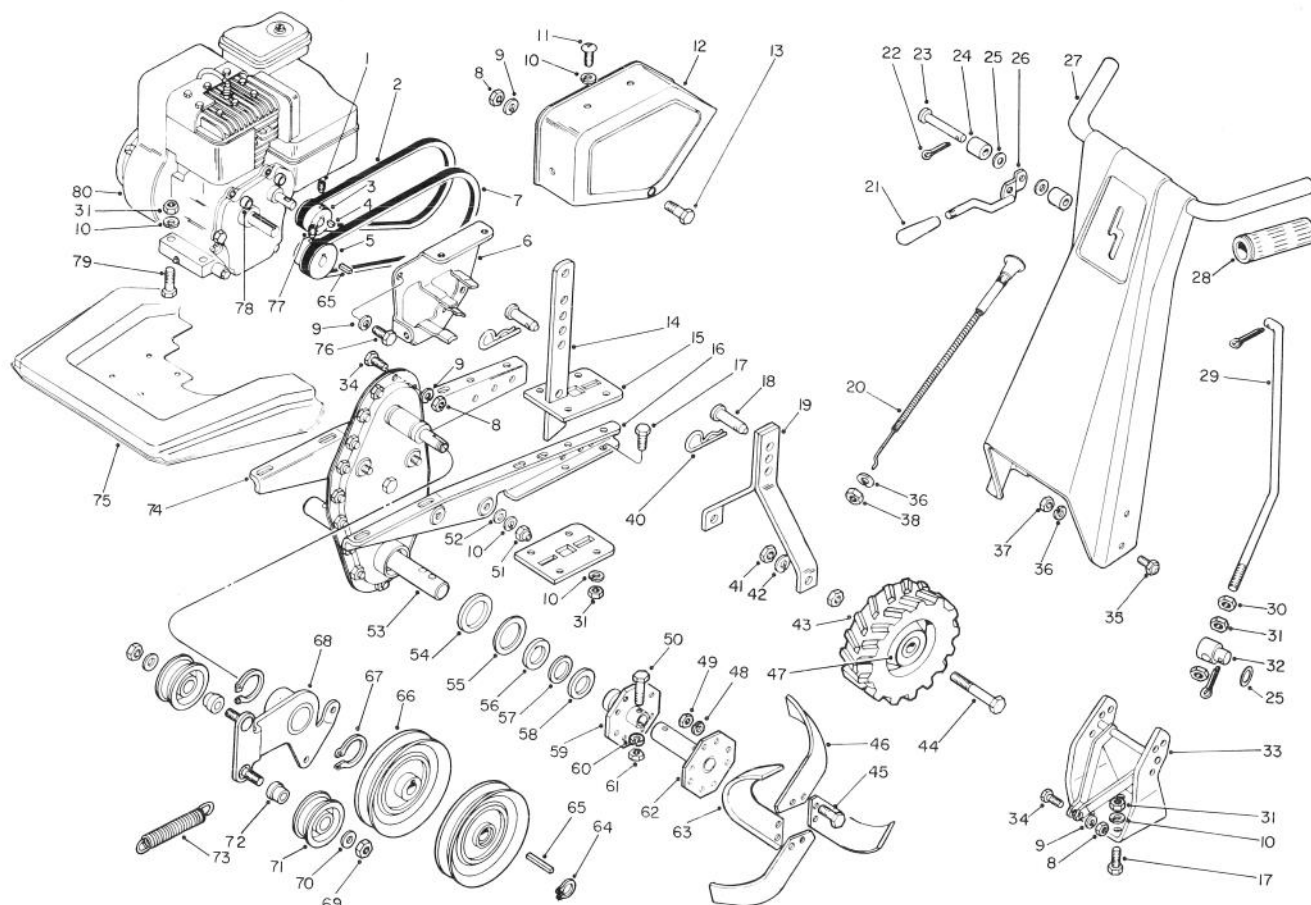
Ref. No.	Part No.	Description	No. Used
19	47-8520	Wheel Hanger	1
20	48-0850	Throttle Control	1
21	47-8140	Knob	1
22	3272-6	Cotter Pin	3
23	47-8220	Clevis Pin	1
24	47-8210	Rubber Disc	2
25	3256-23	Flat Washer	3
26	48-1040	Clutch Lever	1
27	48-1070	Handle w/Decal	1
28	48-1130	Grip	2
29	48-1030	Control Rod	1
30	3218-2	Jam Nut	1
31	3217-6	Hex Nut	18
32	48-0130	Swivel	1
33	48-1050	Handle Support	1
34	321-4	Capscrew	2
35	47-7800	Acorn Hd. Bolt	4
36	3253-5	Lockwasher	5

COPYRIGHT © ALL RIGHTS RESERVED

The Toro Company — 1983

MINNEAPOLIS, MN 55420 — U.S.A.

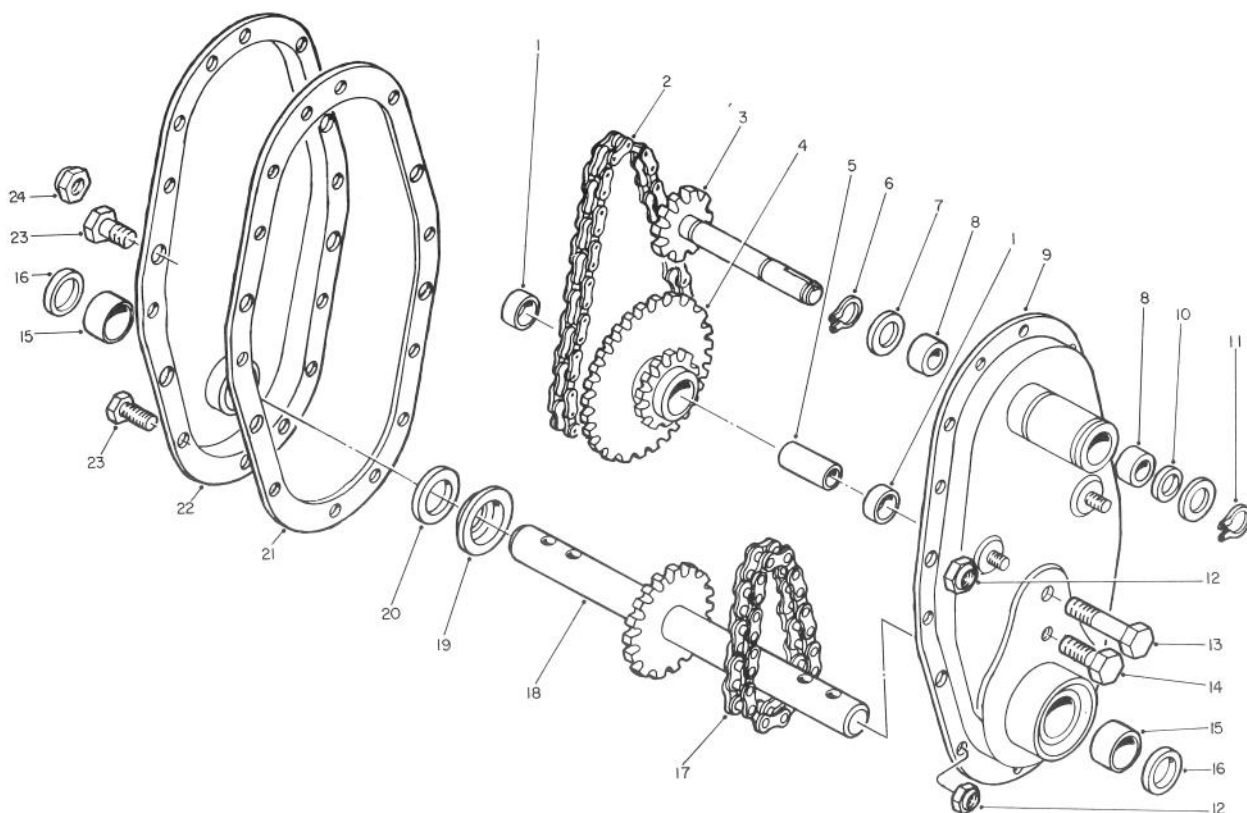
PRICE \$1.00



TILLER ASSEMBLY (Continued)

Ref. No.	Part No.	Description	No. Used
37	3217-1	Hex Nut	4
38	3219-3	Hex Nut	1
40	47-7790	Hair Pin Cotter	2
41	3218-5	Jam Nut	4
42	3253-7	Lockwasher	2
43	47-8010	Tire & Wheel Assembly L.H.	1
44	325-14	Capscrew	2
45	47-7980	Tine Bolt	32
46	47-7910	Tine R.H.	8
47	47-8000	Tire & Wheel Assembly R.H.	1
48	3253-6	Lockwasher	32
49	3219-4	Hex Nut	32
50	47-8860	Capscrew	4
51	32152-1	Nut — Hex Cone Lock	4
52	3256-23	Flat Washer	4
53	48-1260	Chain Case Assembly	1
54	47-9670	Washer	2
55	47-7780	Felt Seal	2
56	47-8100	Felt Seal	2
57	47-8050	Washer	2
58	47-8060	Felt Seal	2
59	47-8080	Inner Tine Hub	2

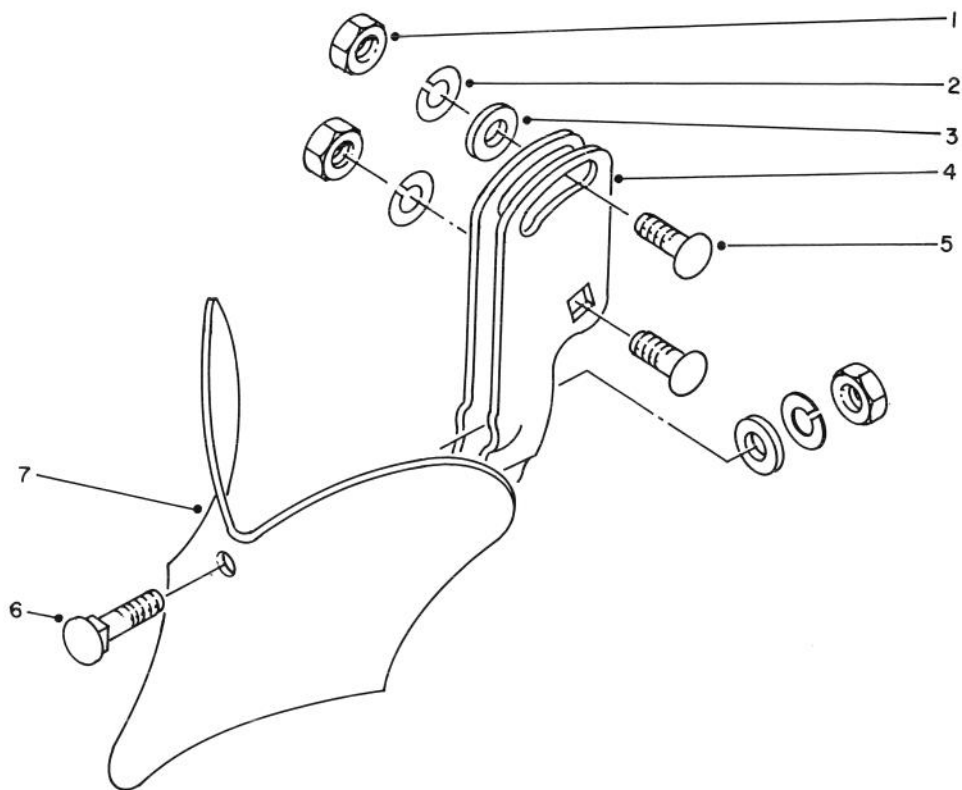
Ref. No.	Part No.	Description	No. Used
60	3253-21	Lockwasher	4
61	3219-3	Hex Nut	4
62	47-8070	Outer Tine Hub	2
63	47-7920	Tine L.H.	8
64	47-9580	Retaining Ring	1
65	3-6857	Key	2
66	48-0100	Pulley	2
67	32120-33	Retaining Ring	2
68	48-0110	Idler Arm	1
69	32152-2	Locknut	2
70	3256-24	Flatwasher	2
71	47-9520	Idler Pulley	2
72	47-9530	Spacer	2
73	48-0120	Spring	1
74	47-9710	Frame R.H.	1
75	48-0980	Tine Shield	1
76	321-10	Capscrew	3
77	3246-2	Set Screw	1
78	47-7860	Spacer	3
79	322-7	Capscrew	4
80	47-7700	Engine	1



CHAIN CASE ASSEMBLY NO. 48-1260

Ref. No.	Part No.	Description	No. Used
1	47-8350	Bearing	2
2	47-9690	Upper Chain	1
3	48-0280	Input Shaft	1
4	47-9700	Sprocket Assembly (Incl. Ref. #1)	1
5	47-7960	Idler Sleeve	1
6	47-9580	Retaining Ring	2
7	47-9650	Washer	2
8	252-82	Bearing	2
9	48-0330	Chain Case Assembly L.H. (Incl. Ref. # 8&15)	1
10	47-9610	Seal	1
11	47-9580	Retaining Ring	2
12	32152-4	Locknut	14

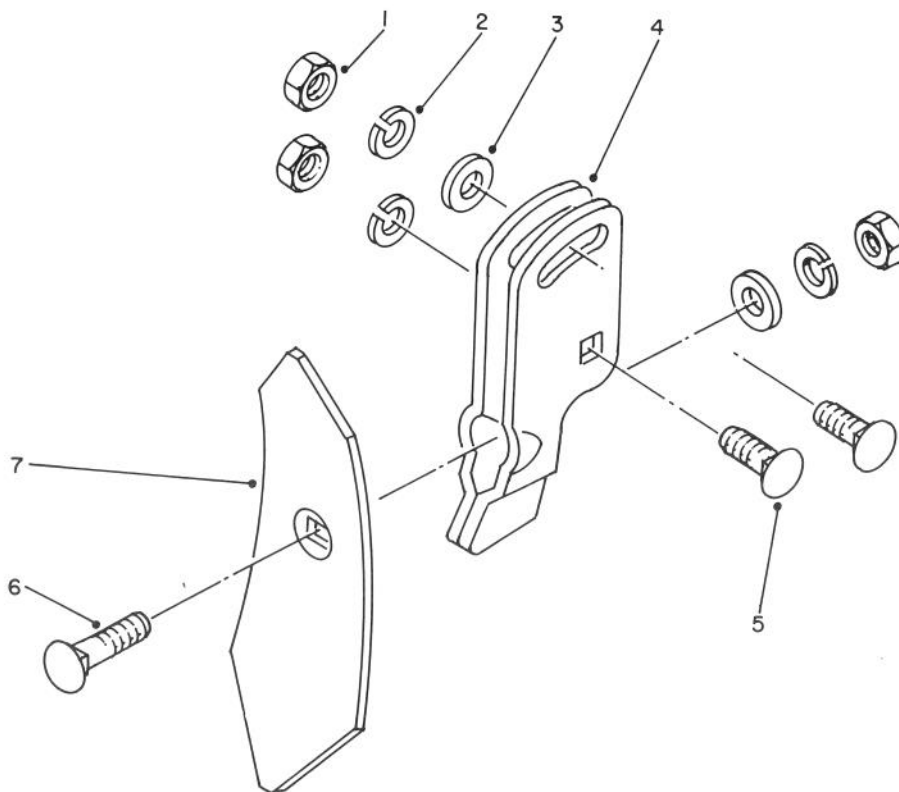
Ref. No.	Part No.	Description	No. Used
13	47-8900	Capscrew	1
14	3213-20	Capscrew	1
15	47-9550	Bearing	2
16	47-7770	Seal	2
17	47-9560	Lower Chain	1
18	48-1280	Tine Shaft	1
19	47-9640	Spacer Cup	1
20	47-8780	Shim — Gear	1-2
21	47-9570	Gasket	1
22	48-0320	Chain Case Assembly R.H. (Incl. Ref. #15)	1
23	321-2	Capscrew	14
24	32152-2	Locknut	1



8" FURROW OPENER MODEL 59708 (Optional)

Ref. No.	Part No.	Description	No. Used
1	3217-7	Hex Nut	3
2	3253-5	Lockwasher	3
3	3256-24	Washer	2
4	49-3390	Holder	1

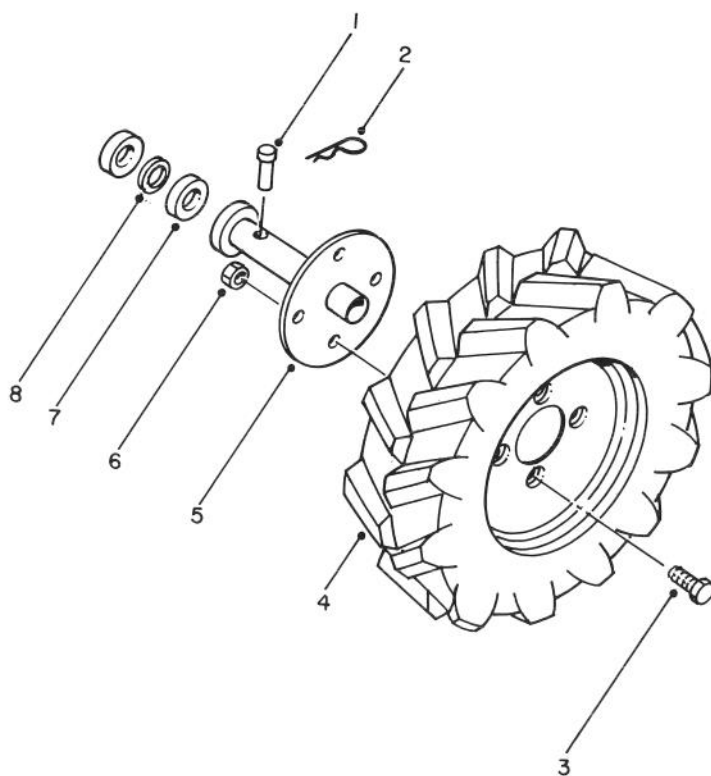
Ref. No.	Part No.	Description	No. Used
5	3231-25	Carriage Bolt	2
6	49-3410	Plow Bolt	1
7	49-3400	Shovel	1



2" FURROW OPENER MODEL 59709 (Optional)

Ref. No.	Part No.	Description	No. Used
1	3217-7	Hex Nut	3
2	3253-5	Lockwasher	3
3	3256-24	Washer	2
4	49-3390	Holder	1

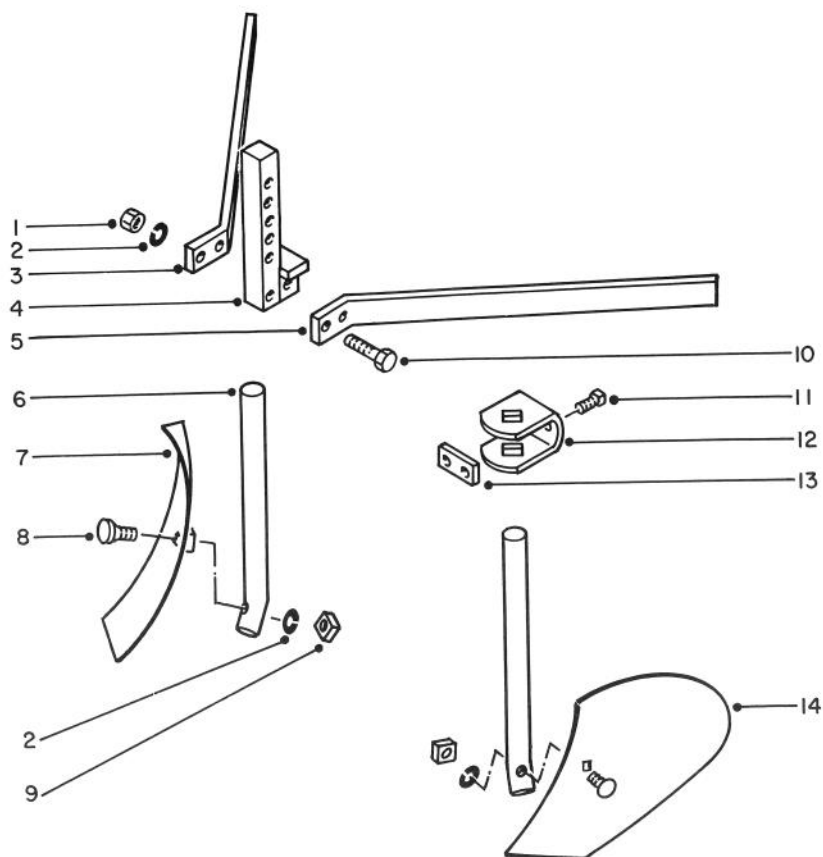
Ref. No.	Part No.	Description	No. Used
5	3231-25	Carriage Bolt	2
6	49-3410	Plow Bolt	1
7	49-3420	Shovel	1



16" TRACTOR TIRES MODEL 59716 (Optional)

Ref. No.	Part No.	Description	No. Used
1	49-3590	Clevis Pin	2
2	47-7790	Hair Pin Cotter	2
3	49-3600	Lug Bolt	8
4	49-3570	Tire and Wheel Assembly L.H.	1
*	49-3540	Tire and Wheel Assembly R.H.	1
*	49-3550	Tire — 16" Tubeless	2
*	47-8090	Value Stem	2

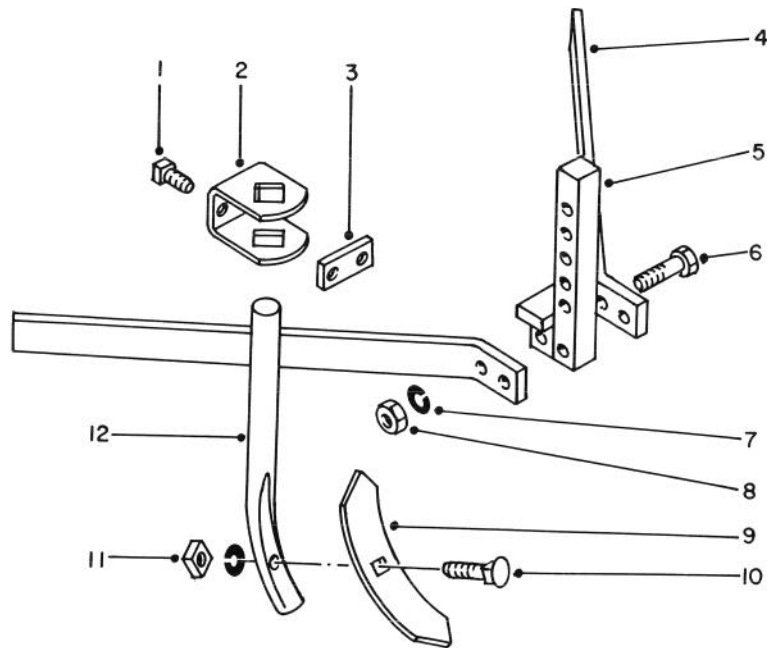
Ref. No.	Part No.	Description	No. Used
*	49-3560	Wheel	2
*	47-7930	Valve Cap	2
5	49-3580	Adapter	2
6	3219-4	Hex Nut	8
7	49-3610	Felt Seal	4
8	47-8050	Washer	2



TURNING PLOW MODEL 59718 (Optional)

Ref. No.	Part No.	Description	No. Used
1	3219-3	Hex Nut	2
2	3253-5	Lockwasher	2
3	49-3470	Hitch Side — A Frame	2
4	49-3460	Hitch	1
5	49-3450	Attachment Standard	2
6	49-3350	Turning Plow — R.H.	1
7	49-3480	Plow Bolt	2

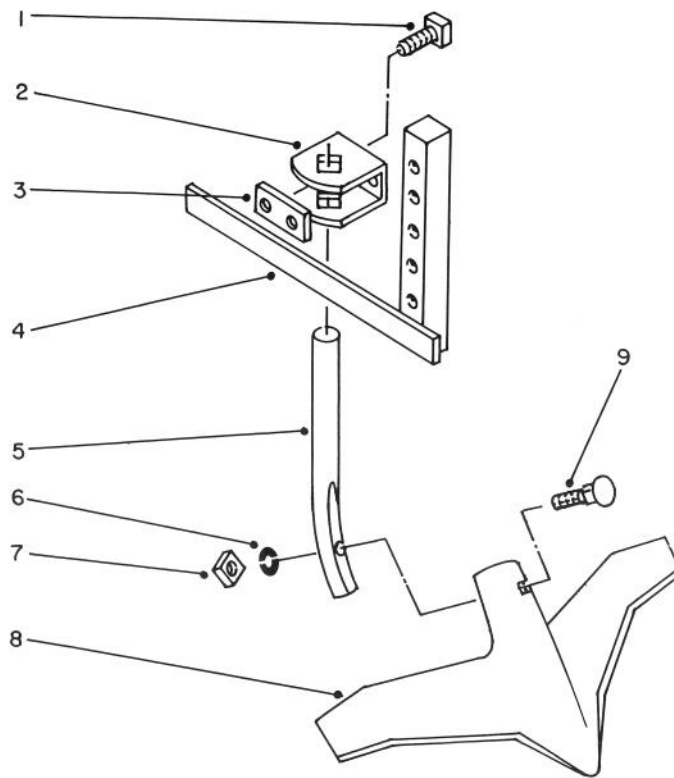
Ref. No.	Part No.	Description	No. Used
8	49-3490	Square Nut	2
9	3211-11	Hex Hd. Capscrew	2
10	49-3510	Square Hd. Set Screw	4
11	49-3440	Clamp	2
12	49-3500	Special Nut	2
13	49-3360	Turning Plow — L.H.	1



WISHBONE HARROW MODEL 59719 (Optional)

Ref. No.	Part No.	Description	No. Used
1	49-3510	Set Screw	8
2	49-3440	Clamp	4
3	49-3500	Special Nut	4
4	49-3470	Hitch Side — A Frame	2
5	49-3460	Hitch	1
6	3211-11	Hex Hd. Capscrew	2

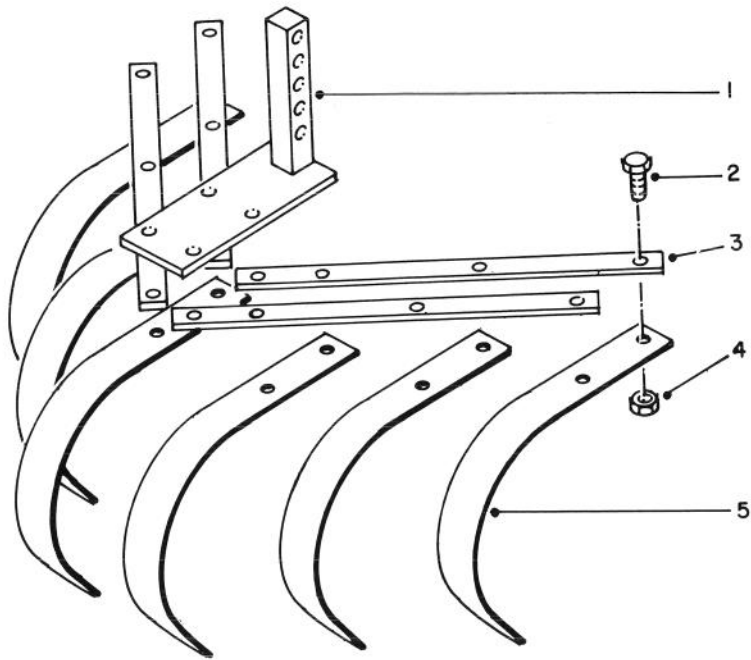
Ref. No.	Part No.	Description	No. Used
7	3253-5	Lockwasher	6
8	3219-3	Hex Nut	2
9	49-3430	Wishbone Harrow Point	4
10	49-3480	Plow Bolt	4
11	49-3490	Square Nut	4
12	49-3450	Attachment Standard	4



15" SWEEP PLOW MODEL 59729 (Optional)

Ref. No.	Part No.	Description	No. Used
1	49-3510	Square Hd. Set Screw	2
2	49-3440	Clamp	1
3	49-3500	Special Nut	1
4	49-3530	Hitch	1
5	49-3450	Attachment Standard	1

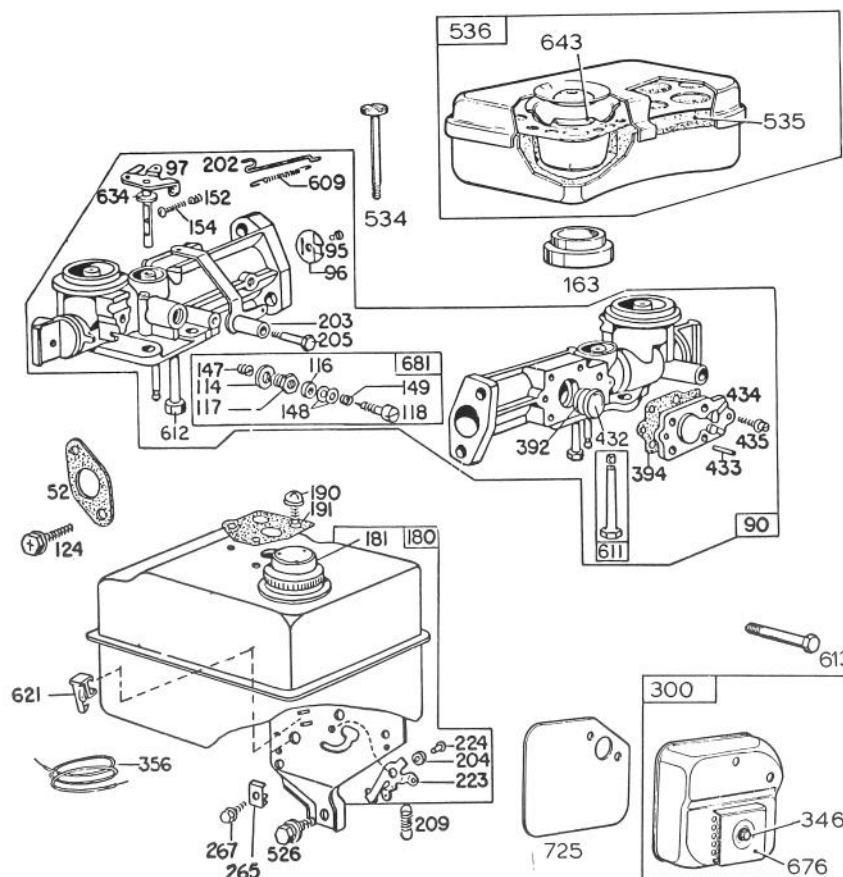
Ref. No.	Part No.	Description	No. Used
6	3253-5	Lockwasher	1
7	49-3490	Square Nut	1
8	49-3520	15" Sweep	1
9	49-3480	Plow Bolt	1



SPRING TOOTH CULTIVATOR MODEL 59722 (Optional)

Ref. No.	Part No.	Description	No. Used
1	49-3790	Hitch	1
2	322-5	Hex Hd. Capscrew	16
3	49-3800	Attachment Bar	4

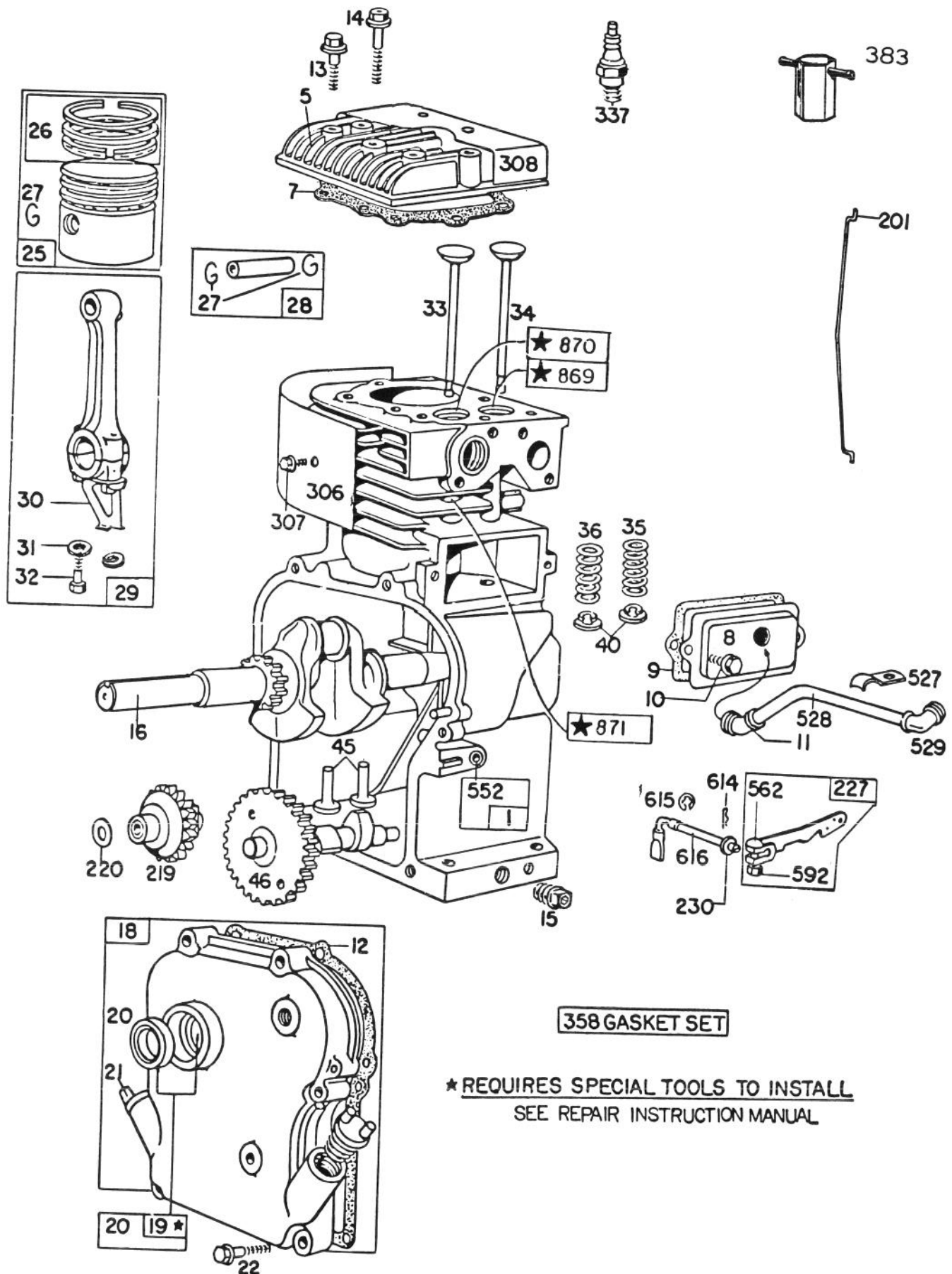
Ref. No.	Part No.	Description	No. Used
4	32152-1	Locknut	16
5	49-3810	Spring Tooth	6



ENGINE BRIGGS & STRATTON MODEL 130292-1671-02 (Continued)

Ref. No.	Part No.	Description	No. Used	Ref. No.	Part No.	Description	No. Used
52	*27355	Gasket — Carburetor Mounting	2	223	221517	Lever — Governor Control	1
90	299437	Carburetor Assembly	1	224	93491	Rivet — Governor Control Lever Mounting	1
95	93499	Screw — Throttle Valve to Shaft Sem	1	265	221535	Clamp — Casing	1
96	211203	Throttle — Carburetor	1	267	93496	Screw — Sem	1
97	299212	Shaft and Lever — Throttle	1	300	297274	Muffler — Exhaust	1
114	66594	Gasket — Needle Valve Nut	1	346	93705	Screw — Sem	1
116	65978	Packing — Needle Valve	1	356	299500	Wire — Ground	1
117	230590	Nut — Needle Valve	1	392	260455	Spring — Fuel Pump Diaphragm	1
118	23433	Valve — Needle	1	394	270026	Diaphragm	1
124	93357	Screw — Hex. Head	1	432	221377	Cap — Spring	1
147	230591	Seat — Needle Valve	1	433	93265	Pin — Diaphragm Cover	1
148	22235	Washer — Needle Valve	2	434	210959	Cover — Diaphragm	1
149	26336	Spring — Needle Valve	1	435	93141	Screw — Diaphragm Cover	1
152	260575	Spring — Throttle Adjustment	1	526	93343	Screw — Tank Bracket Mounting Sem	1
154	93527	Screw — Machine, Rd. Hd. — 5-40 x 5/8"	1	534	93322	Screw — Air Cleaner	1
163	27660	Gasket — Air Cleaner Mounting	1	535	27987	Element — Air Cleaner	1
180	297600	Tank Assembly — Fuel	1	536	297036	Cleaner Assembly — Air	1
181	392304	Cap — Fuel Tank	1	609	260694	Spring — Throttle Link	1
190	93440	Screw — Fuel Tank Mounting Sem	1	611	391813	Fuel Pipe and Clip Assembly	1
191	*27911	Gasket — Fuel Tank Mounting	2	612	296811	Pipe — Fuel	1
202	260678	Link — Throttle	1	613	93377	Screw — Hex. Hd.	1
203	393919	Crank — Bell	1	621	297472	Switch — Stop	1
204	222962	Bushing Governor Lever (Flat)	1	634	270167	Washer, Throttle Shaft (Felt)	1
205	93838	Screw — Shoulder	1	643	280374	Cup — Air Cleaner	1
209	260695	Spring — Governor	1	676	393750	Deflector — Exhaust	1
				681	299060	Needle Valve Kit	1
				725	221885	Shield — Heat	1

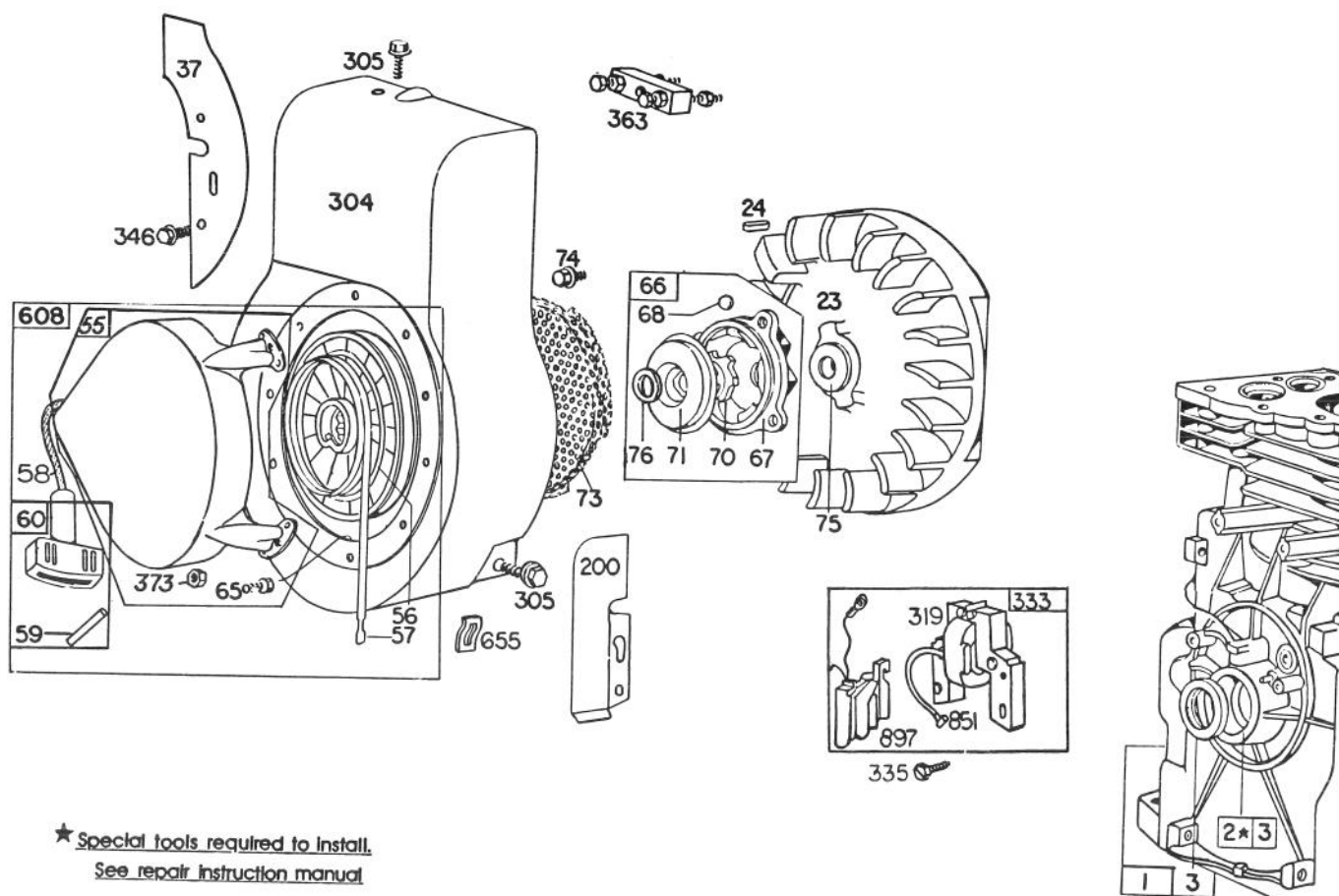
ENGINE BRIGGS & STRATTON MODEL 130292-1671-02 (Continued)



ENGINE BRIGGS & STRATTON MODEL 130292-1671-02 (Continued)

Ref. No.	Part No.	Description	No. Used	Ref. No.	Part No.	Description	No. Used
1	395990	Cylinder Assembly	1	29	299430	Rod Assy. — Connecting	
5	211542	Head — Cylinder	1			Note: For Connecting Rod with .020" undersize	
7	*270383	Gasket — Cylinder Head	1			Crankpin Bore —	
8	294178	Breather — Valve Chamber	1			Order No. 390459	1
9	*27549	Gasket — Valve Cover	1	30	221890	Dipper — Connecting Rod	1
10	93394	Screw — Breather Mtg. Sem	1	31	222282	Washer (One for each screw)	1
11	66578	Grommet — Breather Tube	1	32	92296	Screw — Connecting Rod	1
12	*270080	Gasket — Crankcase — .015" thick (Standard)	1	33	211119	Valve — Exhaust	1
	*270125	Gasket — Crankcase — .005" thick	1	34	261044	Valve — Intake	1
	*270126	Gasket — Crankcase — .009" thick	1	35	260552	Spring — Intake Valve	1
13	93368	Screw — Cylinder Head (2-3/32" long)	1	36	26478	Spring — Exhaust Valve	1
14	93369	Screw — Cylinder Head (2-15/32" long)	1	40	93312	Retainer — Valve Spring	1
15	93448	Plug — Pipe	1	45	260642	Tappet — Valve	1
16	260938	Crankshaft	1	46	211284	Gear — Cam	1
18	298183	Cover Assy. — Crankcase	1	201	261558	Link — Governor	1
19	297603	Bushing — Crankcase Cover	1	219	391737	Gear — Governor	1
		Note: Requires special tools for installation.	1	220	221551	Washer — Thrust	1
20	294606	Seal — Oil		227	393920	Lever Assy. — Governor	1
		Note: 391484 Seal — Oil Used on the Auxiliary P.T.O. Shaft	1	230	222450	Washer — Governor	
21	66768	Plug — Oil Filler	1			Lever (1/4" I.D.)	1
22	93032	Screw — Crankcase		306	221511	Shield — Cylinder	1
		Cover Mounting Sem	1	307	93042	Screw — Cylinder Shield	
25	298904	Piston Assy. Standard	1			Mounting Sem	1
	298905	Piston Assy.— .010" O.S.	1	308	221512	Cover — Cylinder Head	1
	298906	Piston Assy.— .020" O.S.	1	337	298809	Plug — Spark	
	298907	Piston Assy. — .030" O.S.	1			(1-1/2" high — 37-42 M.M.)	1
		Piston Ring Sets:		358	297615	Gasket Set	1
		Note: For Chrome Piston		383	89838	Wrench — Spark Plug	1
		Ring Set — Standard Size —		527	221514	Clamp — Breather Tube	
		Order Part No. 299742.	1	528	230722	Tube — Breather	1
26	298982	Ring Set — Standard Piston	1	529	67838	Grommet — Breather Tube	1
	298983	Ring Set — .010" O.S. Piston	1	552	231079	Bushing — Governor	
	298984	Ring Set — .020" O.S. Piston	1			Crank (1/4" I.D.)	1
	298985	Ring Set — .030" O.S. Piston	1	562	92613	Bolt — Governor Lever	1
27	26026	Lock — Piston Pin	1	592	231082	Nut — Hex. — 10-24	1
28	298909	Pin Assy. — Piston — Standard	1	614	93306	Cotter — Hair Pin	1
	298908	Pin Assy. — Piston — .005" O.S.	1	615	93307	Retainer — E-Ring	1
				616	231077	Crank — Governor	1
				869	211787	Seat — Intake Valve	
						(Standard)	1
				870	211172	Seat — Exhaust Valve	
						(Standard)	1
				871	63709	Guide — Exhaust Valve	1

*Included in Gasket Set —
Part No. 297615.



ENGINE BRIGGS & STRATTON MODEL 130292-1671-02 (Continued)

Ref. No.	Part No.	Description	No. Used
1	395990	Cylinder Assembly	1
2	297565	Bushing — Cylinder	1
		Note: Requires special tools for installation	1
3	299819	Seal — Oil	1
23	297229	Flywheel — Magneto	1
24	222698	Key — Flywheel	1
37	222443	Guard — Flywheel	1
55	299431	Housing — Rewind Starter	1
56	295871	Pulley — Rewind Starter (Includes 63" long rope)	1
57	294303	Spring — Rewind Starter	1
58	66884	Rope — Rewind Starter — 63" long	1
59	230228	Pin — Starter Grip	1
60	393152	Grip — Starter Rope	1
65	93067	Screw — Stamped Steel Housing Mtg. Sem	1
66	394558	Clutch Assy. — Rewind Starter	1
67	394897	Housing — Starter Clutch	1
68	63770	Ball — Clutch	1
70	298436	Ratchet — Rewind Starter	1

Ref. No.	Part No.	Description	No. Used
71	221653	Washer — Clutch Retainer	1
73	221923	Screen — Starter Pulley	1
74	93490	Screw — Sem	1
75	220865	Washer — Spring	1
76	68238	Washer — Ratchet Sealing	1
200	221480	Guide — Air	1
304	299410	Housing Blower	1
305	93158	Screw — Blower Housing Mounting	1
319	395490	Armature Assy. (Less Trigger Coil)	1
333	395491	Armature — Magneto	1
335	93414	Screw — Armature Mtg. Sem	1
346	93705	Screw — Sem	1
363	19069	Flywheel Puller (Optional Accessory)	1
373	92987	Nut — Hex.	1
608	390463	Starter Assy. — Rewind	1
655	222598	Anchor — Spring	1
851	221798	Cable Terminal — Ignition	1
897	394970	Trigger Coil	1

PRODUCT CHANGES

In an effort to make improvements available to TORO owners as quickly as possible, minor changes are incorporated into Toro's products from time to time that do not become immediately shown in the Parts Catalog. If such a change apparently has been made in your unit, which is not reflected in your manual, see your TORO Distributor or his Authorized TORO Service Dealer for information and part numbers.

IDENTIFICATION AND ORDERING

MODEL AND SERIAL NUMBERS

The Tiller has two identification numbers: a model number and a serial number. The two numbers are stamped on a decal which is located on the right side of the frame below the handle support bracket. In any correspondence concerning the tiller, supply model and serial numbers to assure that correct information and replacement parts are obtained.

To order replacement parts from an Authorized TORO Service Dealer, supply the following information:

1. Model and serial numbers of the tiller.
2. Part number, description, and quantity of part(s) desired.

Note: Do not order by reference number if a parts catalog is being used; use the PART NUMBER.

The Toro Promise

A ONE YEAR LIMITED WARRANTY

The Toro Company promises to repair your TORO Product if defective in materials or workmanship. The following time periods from the date of purchase apply:

Residential Product	1 Year
Residential Products Used Commercially	45 Days

The costs of parts and labor are included, but the customer pays the transportation costs. Just return any residential product to an Authorized TORO Service Dealer or TORO Distributor.

Should you feel your TORO Product is defective and wish to rely on The Toro Promise, the following procedure is recommended:

1. Contact any Authorized TORO Service Dealer, TORO Master Service Dealer, or TORO Distributor (the Yellow Pages of your telephone directory is a good reference source).
2. He will either instruct you to return the product to him or recommend another Authorized TORO Service outlet which might be more convenient.
3. Bring the product along with your original sales slip, or other evidence of purchase date, to the service dealer.
4. The servicing dealer will inspect the unit, advise you whether the product is defective and, if so, make all repairs necessary to correct the defect without extra charge to you.

If for any reason you are dissatisfied with the dealer's analysis of the defect or the service performed, you may contact us.

Write:

TORO Consumer Service Department
8111 Lyndale Avenue South
Minneapolis, Minnesota 55420

The above remedy of product defects through repair by an Authorized TORO Service Dealer is the purchaser's sole remedy for any defect.

THERE IS NO OTHER EXPRESS WARRANTY. ALL IMPLIED WARRANTIES OF MERCHANTABILITY AND

FITNESS FOR USE ARE LIMITED TO THE DURATION OF THE EXPRESS WARRANTY.

Some states do not allow limitations on how long an implied warranty lasts, so the above limitation may not apply to you.

This warranty applies only to parts or components which are defective and does not cover repairs necessary due to normal wear, misuse, accidents, or lack of proper maintenance. Regular, routine maintenance of the unit to keep it in proper operating condition is the responsibility of the owner.

All warranty repairs reimbursable under The Toro Promise must be performed by an Authorized TORO Service Dealer using Toro approved replacement parts.

Repairs or attempted repairs by anyone other than an Authorized TORO Service Account are not reimbursable under The Toro Promise. In addition, these unauthorized repair attempts may result in additional malfunctions, the correction of which is not covered by warranty.

THE TORO COMPANY IS NOT LIABLE FOR INDIRECT, INCIDENTAL OR CONSEQUENTIAL DAMAGES IN CONNECTION WITH THE USE OF THE PRODUCT INCLUDING ANY COST OR EXPENSE OF PROVIDING SUBSTITUTE EQUIPMENT OR SERVICE DURING PERIODS OF MALFUNCTION OR NON-USE.

Some states do not allow the exclusion or limitation of incidental or consequential damages, so the above limitation or exclusion may not apply to you.

This warranty gives you specific legal rights, and you may also have other rights which vary from state to state.

COUNTRIES OTHER THAN THE UNITED STATES OR CANADA

Customers who have purchased TORO products exported from the United States or Canada should contact their TORO Distributor (Dealer) to obtain guarantee policies for your country, province or state. If for any reason

you are dissatisfied with your Distributor's service or have difficulty obtaining guarantee information, contact the TORO importer. If all other remedies fail, you may contact us at The Toro Company.

MAINTENANCE RECORD

[illegible]