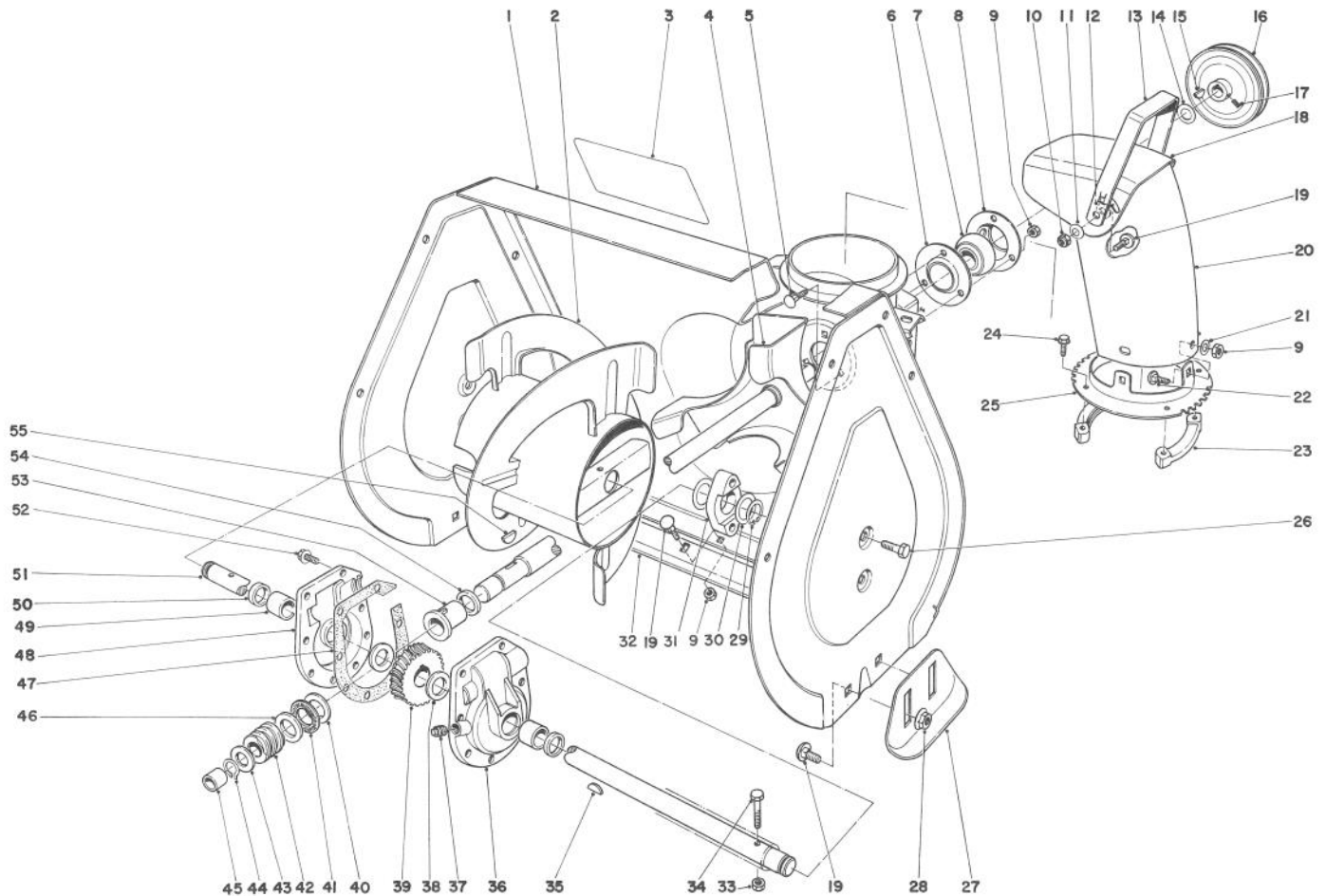




MODEL NO. 38035-4000001 &amp; UP

# **PARTS CATALOG**

## **3521 SNOWTHROWER**



## **AUGER ASSEMBLY**

Ref. No.	Part No.	Description	No. Used
1	43-7320	Auger Housing	1
2	39-1180	Auger R.H.	1
*	39-1190	Auger L.H.	1
3	29-6350	Decal — Auger Warning	1
4	37-6990	Shaft & Impeller	1
5	3230-10	Carriage Bolt	3
6	26-6110	Bearing Flange Front	1
7	26-6100	Ball Bearing	1
8	26-6120	Bearing Flange Rear	1
9	3296-29	Locknut	11
10	32152-1	Locknut	2
11	3290-340	Washer Belleville	2
12	20-4320	Washer Rubber	2
13	37-8930	Handle Deflector	1
14	3-0737	Washer	1

Ref. No.	Part No.	Description	No. Used
15	3257-5	Key	1
16	37-6890	Pulley	1
17	3242-4	Set Screw	2
18	37-8920	Deflector	1
19	3230-1	Carriage Bolt	11
20	37-8910	Chute — Discharge	1
21	3256-23	Washer	3
22	3230-18	Carriage Bolt	3
23	37-6490	Retainer — Chute Ring	3
24	27-0220	Self Tapping Screw	6
25	37-8940	Chute Ring	1
26	32144-11	Self Tapping Screw	4
27	40-8160	Skid	2
28	32128-20	Flange Nut	4
29	32151-36	Snap Ring	2

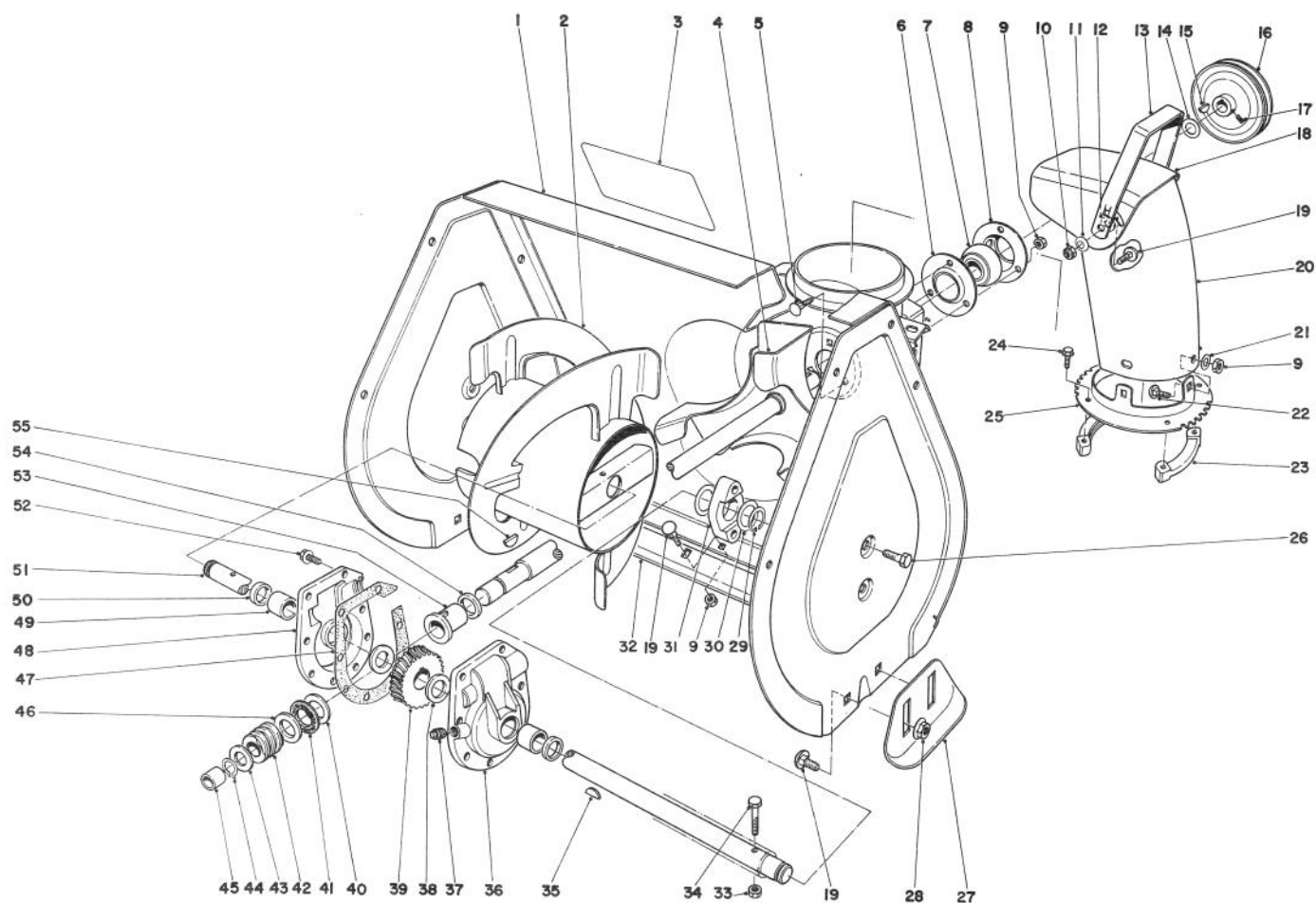
\*Not Illustrated

COPYRIGHT © ALL RIGHTS RESERVED

The Toro Company — 1983

MINNEAPOLIS, MN 55420 — U.S.A.

PRICE \$1.00

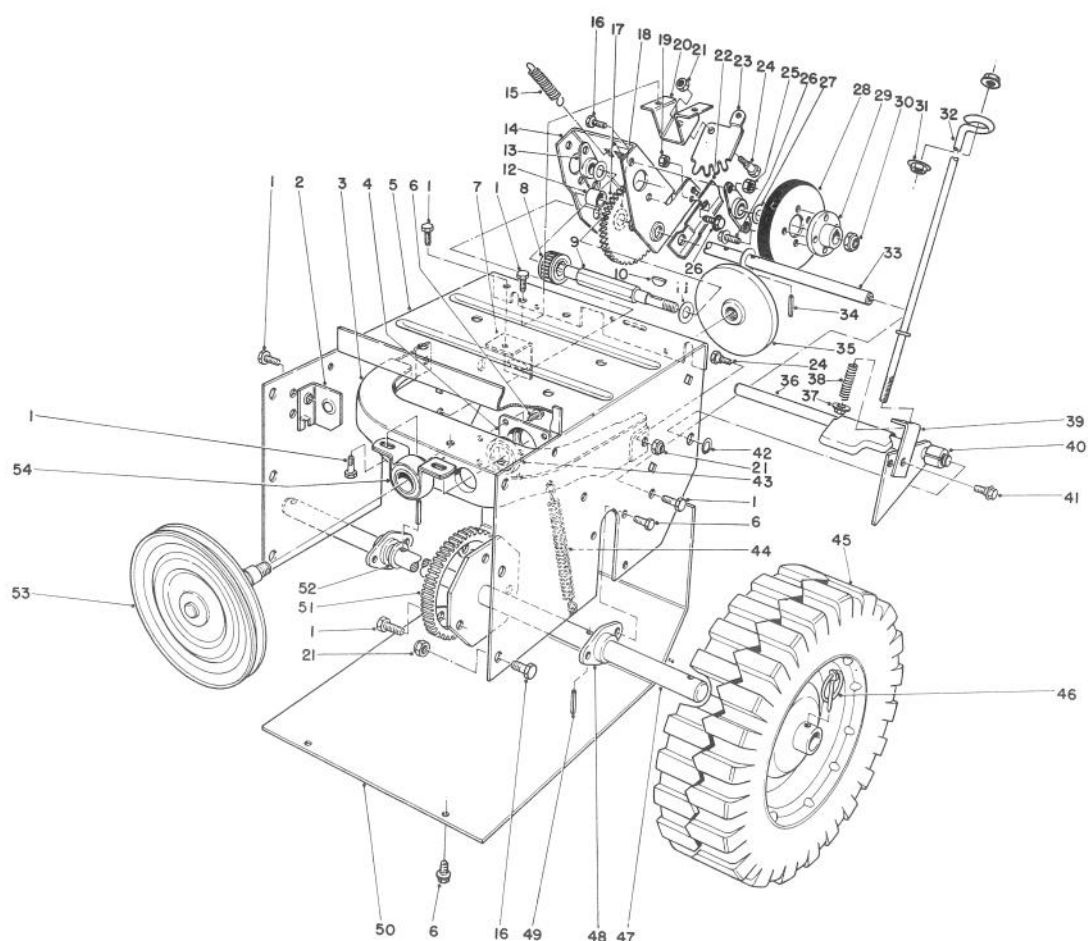


## AUGER ASSEMBLY (Continued)

Ref. No.	Part No.	Description	No. Used
30	5-1550	Thrust Washer	4
31	37-6550	Auger Bearing	2
32	39-1550	Scraper Blade	1
33	32152-4	Locknut	2
34	321-10	Capscrew	2
35	3257-33	Woodruff Key	1
36	37-8860	Gear Case L.H. (Incl. Ref. #49 & 50)	1
37	281-1	Pipe Plug	1
38	252-71	Thrust Bearing	2
39	23-9050	Gear	1
40	257-3	Thrust Washer	1
41	252-76	Needle Thrust Bearing	1
42	5-7170	Worm	1
43	3-8664	Washer	1

Ref. No.	Part No.	Description	No. Used
44	32120-72	Retaining Ring	1
45	256-32	Bushing	1
46	252-80	Thrust Washer	1
47	40-8330	Gasket	1
48	37-8850	Gear Case R.H. (Incl. Ref. #49 & 50)	1
49	256-237	Bushing	2
50	7-0045	Oil Seal	2
51	37-6800	Shaft — Auger	1
52	32144-41	Self Tapping Screw	8
53	37-6560	Bushing — Input	1
54	237-87	Seal	1
55	3257-23	Key — Woodruff	1
*	37-6960	Gear Case Assy. Complete	1

\*Not Illustrated

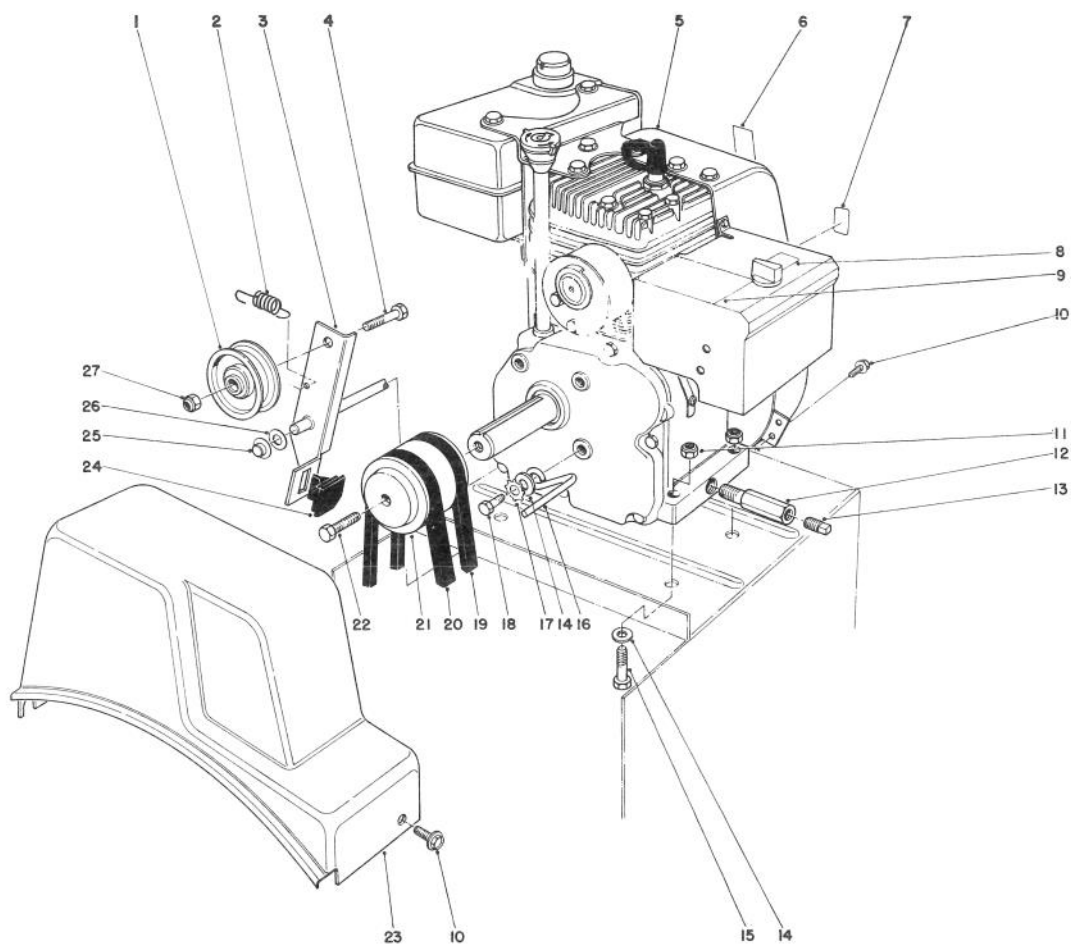


## TRACTION ASSEMBLY

Ref. No.	Part No.	Description	No. Used
1	32144-11	Hex Self Tapping Screw	12
2	37-9060	Mount — Clutch Rod Front	1
3	37-6740	Friction Plate Frame	1
4	37-6730	Cup — Bearing	1
5	37-8900	Traction Frame	1
6	12-3270	Hex Tapping Screw	12
7	37-9070	Mount — Clutch Rod Rear	1
8	37-6500	Sliding Gear	1
9	37-6780	Hex Shaft	1
10	3257-24	Key	1
11	5-7570	Thrust Washer	2
12	256-86	Bushing	1
13	20-1620	Bearing — Friction Wheel	2
14	39-1230	Bracket — Sliding	1
15	37-8880	Spring — Traction Disengage	1
16	322-2	Cap screw	10
17	37-9160	Intermediate Gear & Bushing (Incl. Ref. #12)	1
18	10-9280	Thrust Washer	2
19	3296-16	Locknut	1
20	37-8790	Mount — Quadrant Gear	1
21	3296-29	Locknut	9
22	39-1250	Cam Receiver	1
23	37-8800	Quadrant Gear	1
24	37-8770	Shoulder Bolt	3
25	32152-1	Locknut	4
26	11-9760	Self Tapping Screw	5
27	36-4790	Thrust Washer	1
28	37-6570	Friction Wheel	1

Ref. No.	Part No.	Description	No. Used
29	39-1520	Hub — Friction Wheel Mount	1
30	3296-48	Locknut	1
31	32128-33	Flange Locknut	2
32	39-3060	Lower Traction Rod	1
33	37-6760	Shaft — Pivot	1
34	32121-45	Roll Pin	2
35	38-0800	Friction Plate	1
36	43-7310	Traction Engagement Assy.	1
37	32128-10	Flange Locknut	1
38	38-4520	Spring — Compression	1
39	38-4490	Bracket — Traction	1
40	40-9680	Spacer	1
41	40-8350	Shoulder Screw	1
42	32151-61	Retaining Ring	1
43	38-7820	Bearing	1
44	37-8870	Spring — Friction Plate Frame	1
45	38-1400	Wheel Assembly	2
46	3290-243	Pin — Klik	2
47	37-6970	Axle Shaft	1
48	37-8650	Axle Bearing	2
49	32121-31	Roll Pin	2
50	37-6830	Bottom Cover	1
51	37-6520	Axle Gear	1
52	3-8664	Thrust Washer	2
53	40-8190	Pulley & Shaft	1
54	38-4470	Bushing Assembly	1
*	37-7010	Tire Chain Kit (Optional)	1
*	11-5529	Loose Parts	1

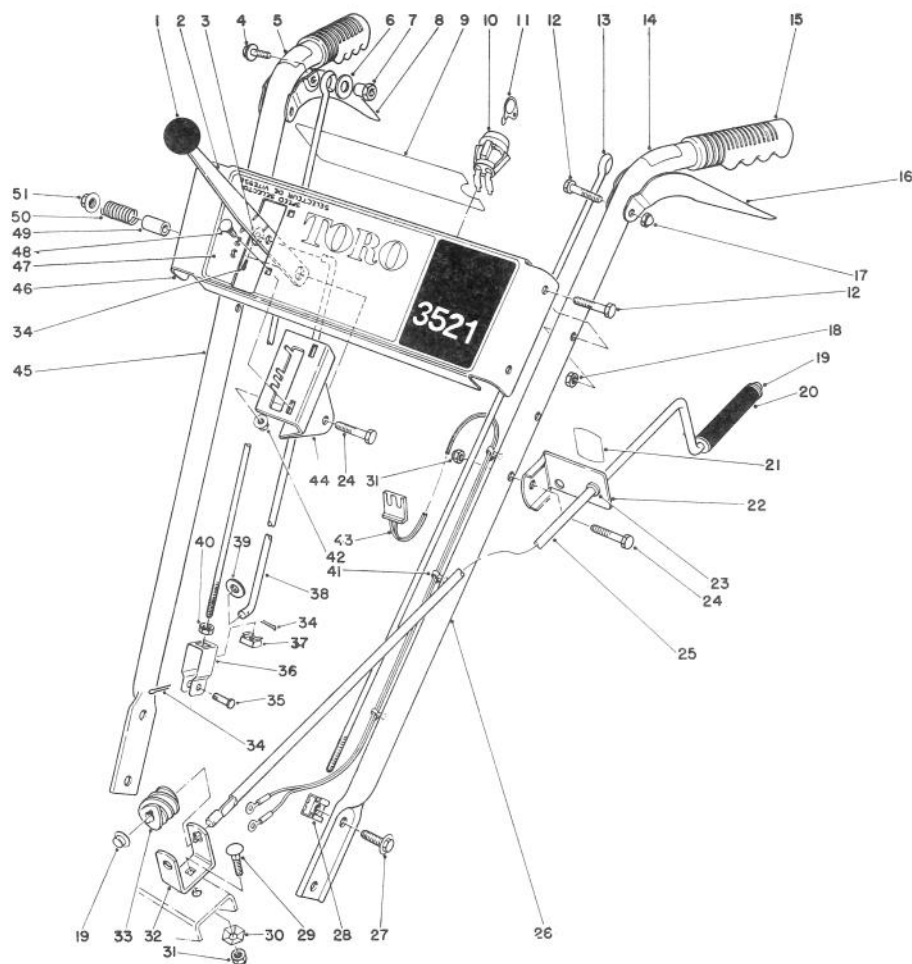
\*Not Illustrated



## ENGINE ASSEMBLY

Ref. No.	Part No.	Description	No. Used
1	3-4244	Idler Pulley	1
2	10-3890	Spring — Auger Disengage	1
3	8-8649	Auger Clutch Rod Assembly (Incl. Ref. #24)	1
4	323-29	Capscrew	1
5	221-754	Engine	1
6	39-3860	Decal — Primer	1
7	37-8890	Decal — Throttle	1
8	39-3840	Decal — Choke	1
9	29-6390	Decal — Hot Surface Warning	1
10	12-3270	Self Tapping Screw	3
11	3296-29	Locknut	4
12	49-3040	Drain Tube	1
13	281-7	Pipe Plug	1

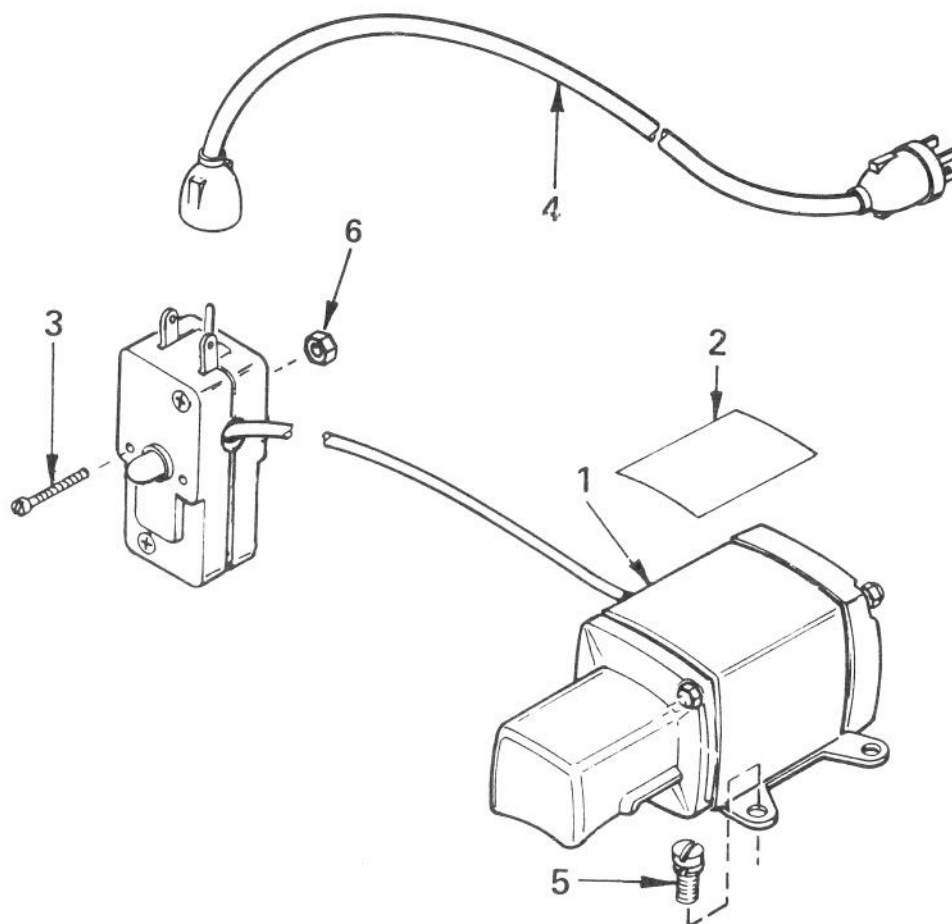
Ref. No.	Part No.	Description	No. Used
14	3256-23	Washer	5
15	322-7	Capscrew	4
16	37-8990	Belt Retainer	1
17	3255-8	Lockwasher	1
18	3210-3	Capscrew	1
19	37-9090	V-Belt — Traction	1
20	37-9080	V-Belt — Auger	1
21	43-7370	Engine Pulley	1
22	43-7290	Screw — Special	1
23	37-6900	Belt Cover	1
24	40-8140	Molded Brake	1
25	3290-320	Nut — Push On	1
26	3256-24	Flat Washer	1
27	32152-2	Locknut	1



## HANDLE ASSEMBLY

Ref. No.	Part No.	Description	No. Used
1	233-21	Knob	1
2	37-8820	Speed Selector	1
3	3256-2	Washer	1
4	3234-13	Hex Flange Capscrew	2
5	39-1130	Decal — Auger Drive	1
6	3256-24	Washer	2
7	47-4990	Post — Linkage Mounting	2
8	47-4970	Lever — Auger Control	1
9	37-9140	Decal — Escutcheon Back	1
10	40-5940	On-Off Switch	1
11	33-2010	Key — Ignition	2
12	321-37	Capscrew	6
13	47-4980	Upper Link	2
14	39-1140	Decal — Wheel Drive	1
15	37-9110	Grip	2
16	47-4960	Lever — Traction Control	1
17	32111-7	Cap Nut	2
18	32152-4	Locknut	4
19	3290-320	Push-On Speed Nut	2
20	40-8230	Grip	1
21	29-6370	Decal — Chute Direction	1
22	6-3069	Bracket — Chute Control Mounting (Incl. Ref. #21 & 23)	1
23	256-249	Nyliner	1
24	322-7	Capscrew	2
25	40-8270	Chute Control Rod	1

Ref. No.	Part No.	Description	No. Used
26	37-8720	Handle — Left	1
27	3234-14	Flange Screw	4
28	3290-196	Retained Nut	4
29	3230-2	Carriage Bolt	1
30	3290-238	Pyramidal Washer	1
31	3296-29	Locknut	2
32	40-8280	Bracket — Chute Worm	1
33	40-8250	Worm Gear	1
34	3274-4	Cotter Pin	3
35	283-3	Clevis Pin	1
36	39-3080	Clevis	1
37	32115-5	Retained Nut	1
38	39-7570	Rod — Speed Selector	1
39	3256-23	Washer	1
40	3218-1	Jam Nut	1
41	17-9120	Wire Mount	3
42	32128-32	Flange Locknut	2
43	43-7390	Wire Harness	1
44	39-1280	Mount — Speed Selector	1
45	37-8710	Handle — Right	1
46	43-7360	Panel — Escutcheon	1
47	49-2370	Decal — Escutcheon	1
48	3229-22	Carriage Bolt	2
49	40-8130	Spacer — Speed Selector	1
50	37-9150	Spring	1
51	32128-13	Flange Locknut	1

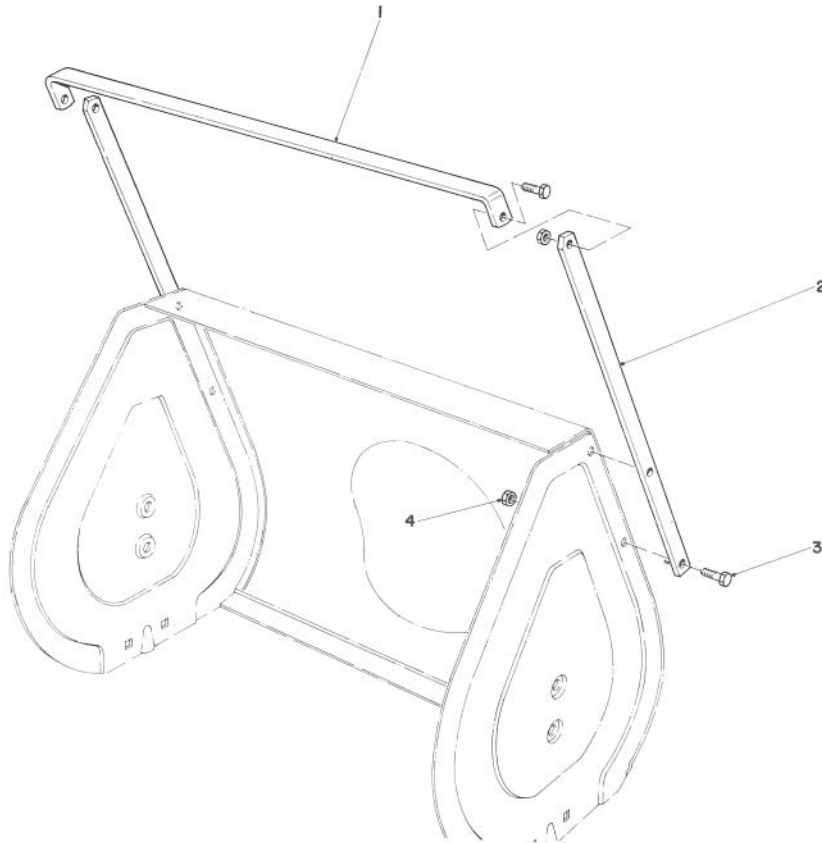


## STARTER MOTOR KIT MODEL 23-3790 (Optional)

Ref. No.	Part No.	Description	No. Used
1†	33517A	Motor, Cranking (CSA Approved) (Incl. #2 thru 6)	1
2†	34161	Decal	1
3†	650741	Screw, Hex Hd. Self Tap	2

Ref. No.	Part No.	Description	No. Used
4†	32450A	Cord, Extension	1
5†	650759	Screw, Hex Washer Hd.	3
6†	650742	Nut & Lockwasher	2

†Note: Obtain individual replacement parts from your local Tecumseh Dealer.

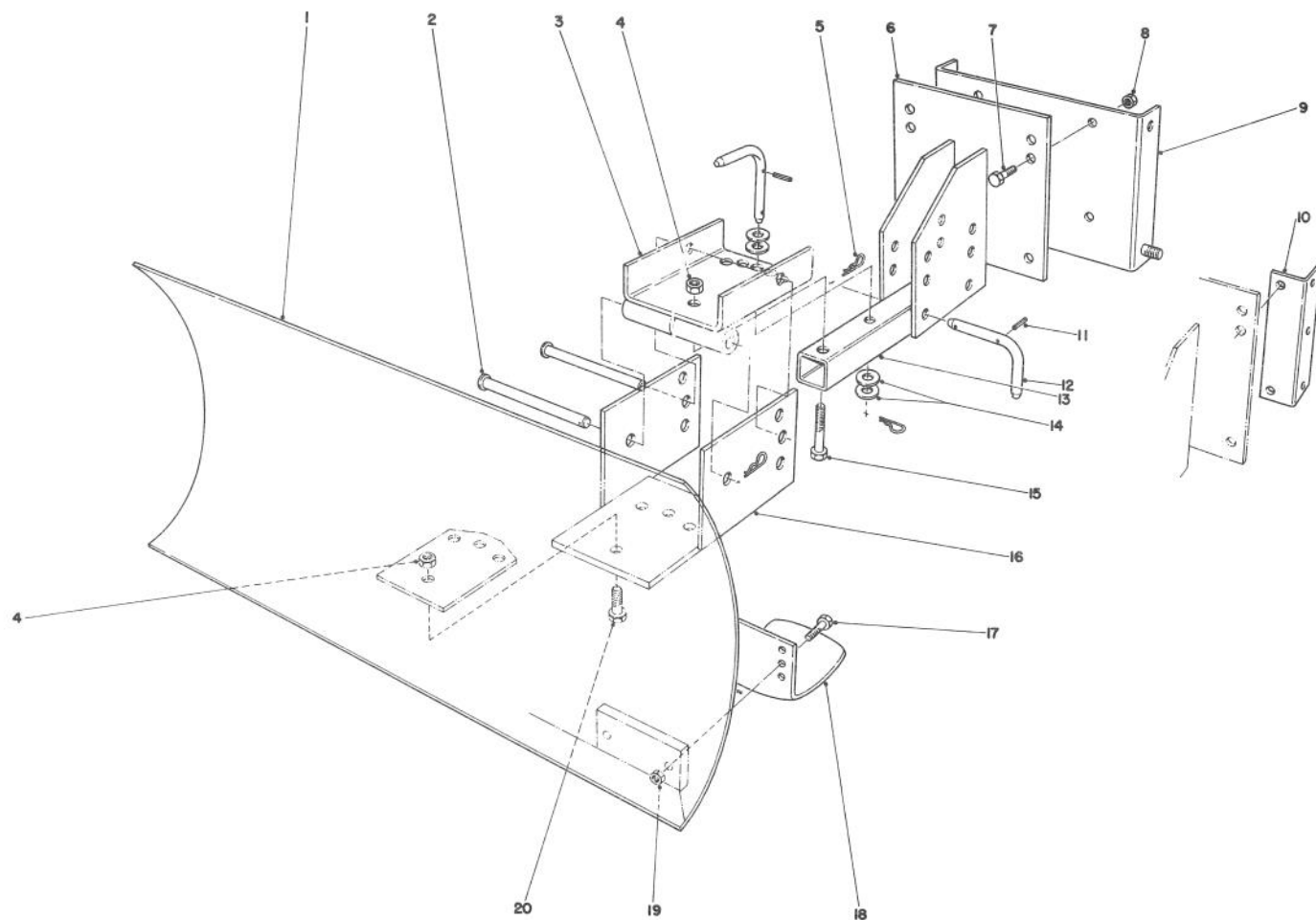


### DRIFT BREAKER KIT NO. 37-7020 (Optional)

Ref. No.	Part No.	Description	No. Used
1	38-0760	Drift Breaker — Top	1
2	38-0750	Drift Breaker — Side	2

Ref. No.	Part No.	Description	No. Used
3	322-4	Capscrew	6
4	3296-29	Locknut	6





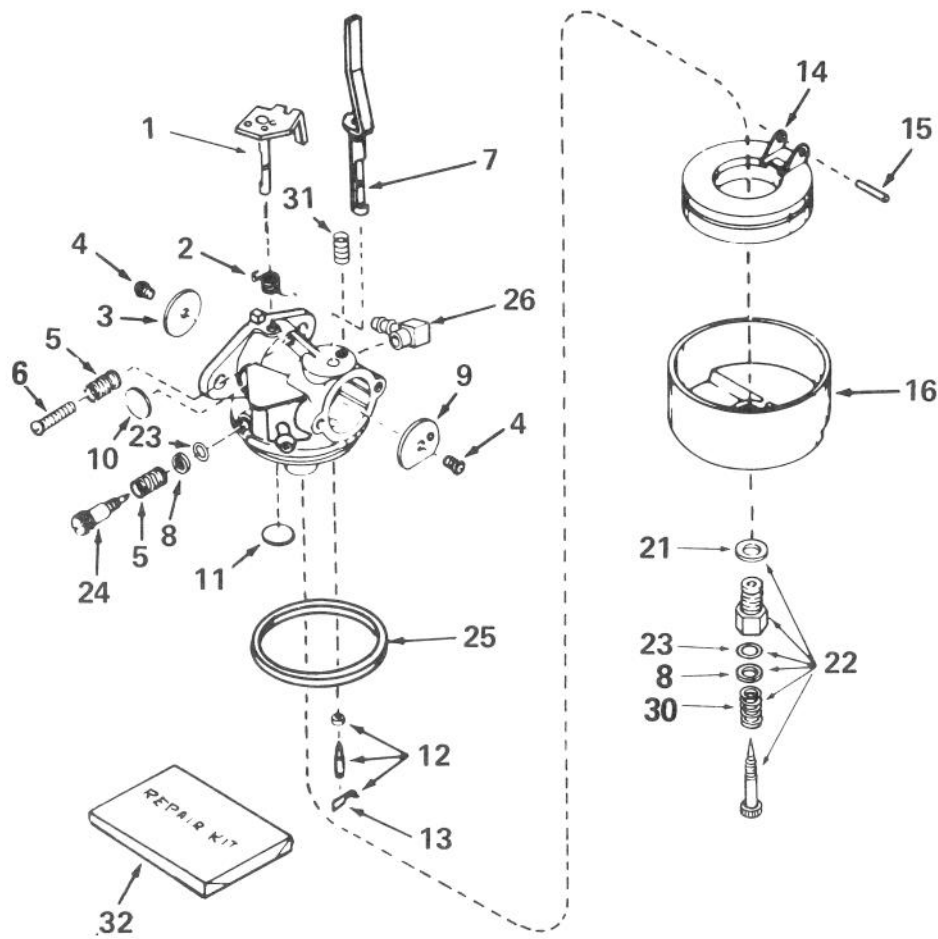
## GRADER BLADE ASSEMBLY MODEL 59099 (Optional)

Ref. No.	Part No.	Description	No. Used
1	7-4374	Blade	1
2	283-38	Clevis Pin	2
3	20-5090	Swivel Bracket	1
4	32152-3	Locknut	5
5	3290-322	Hairpin Cotter	5
6	20-5170	Mounting Plate	1
7	323-6	Capscrew	4
8	32152-2	Locknut	4
9	22-4920	Mounting Plate Bracket (used with 826 and 1132 only)	1
10	39-7850	Mounting Rail (Used with 3521, 421 & 521 Units only)	2

Ref. No.	Part No.	Description	No. Used
11	32121-45	Roll Pin	3
12	20-5210	Pivot Pin (Incl. Ref. #11)	3
13	20-5140	Tongue Blade	1
14	3256-5	Flat Washer	4
15	325-11	Capscrew	1
16	20-5130	Blade Adjustment	1
17	322-6	Capscrew	4
18	7-1023	Skid	2
19	32152-1	Locknut	4
20	325-5	Capscrew	4
*	20-9950	Air Cleaner Kit (Tecumseh)	1

\*Not Illustrated





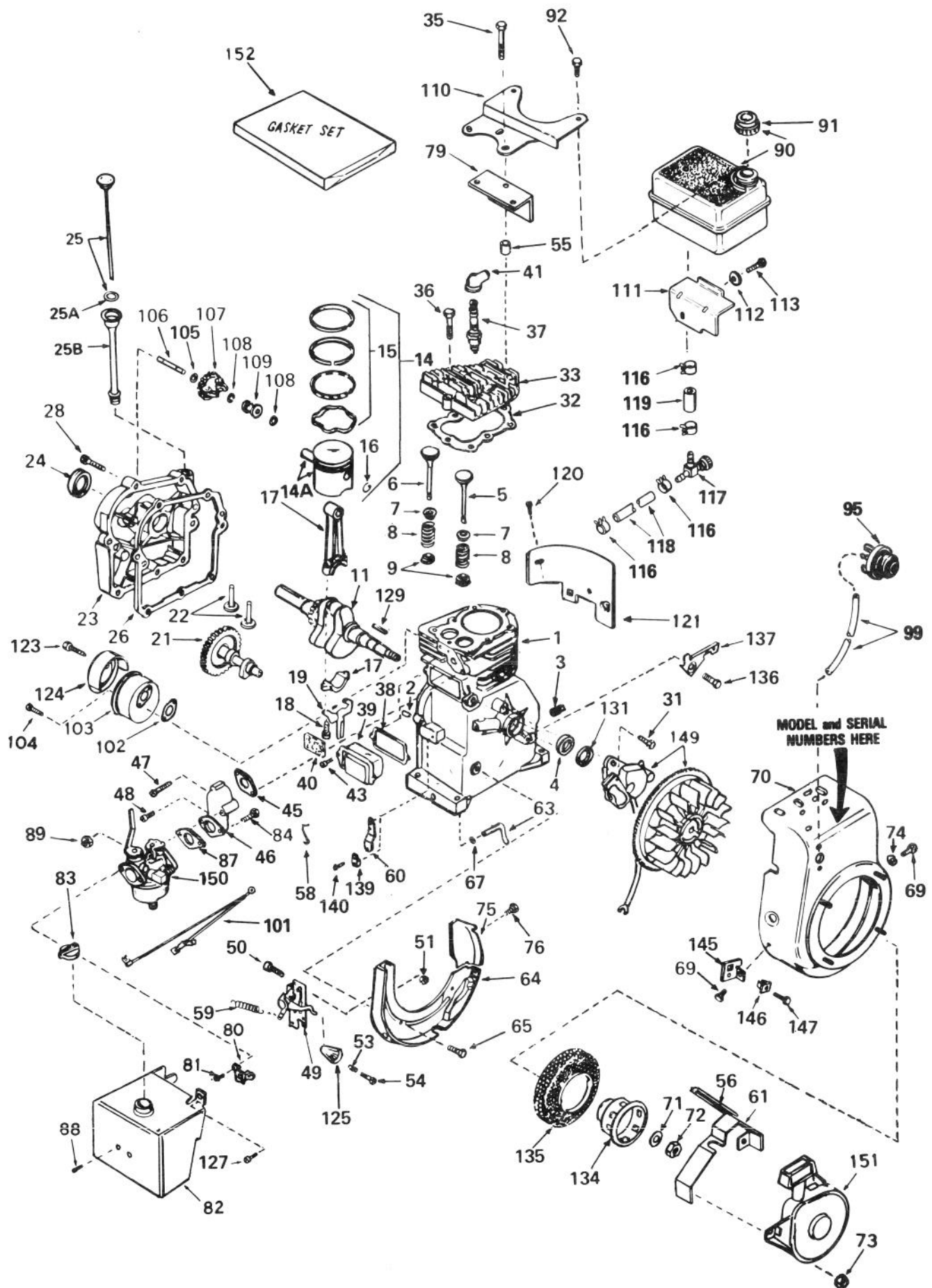
## CARBURETOR NO. 632114

Ref. No.	Part No.	Description	No. Used
1	631615	Shaft & Lever Assy., Throttle	1
2	632016	Spring, Throttle Return	1
3	631036	Shutter, Throttle	1
4	650506	Screw	2
5	630766	Spring, Idle Regulating Screw	2
6	650417	Screw, Idle Regulating	1
7	631913	Shaft & Lever Assy., Choke	1
8	630739	Washer, Flat	2
9	31837	Shutter, Choke	1
10	*630748	Plug, Welch	1
11	*631027	Plug, Welch	1
12	*631021	Inlet Needle, Seat & Clip Assy. (Incl. # 13)	1
13	631022	Clip, Inlet Needle	1

Ref. No.	Part No.	Description	No. Used
14	632019	Float, Carburetor	1
15	*631024	Shaft, Float	1
16	631867	Bowl, Float	1
21	27110	Gasket, Bowl-to-body	1
22	*31839	Adj. Screw Assy., Main (Incl. # 8, 21, 23 & 30)	1
23	*630740	"O" Ring, Adjustment Screw	2
24	*631078	Screw, Idle Adjustment	1
25	*631028	Gasket, Bowl-to-body	1
26	631775	Fitting, Fuel Inlet	1
30	630738	Spring, Main Adj. Screw	1
31	630735	Spring, Choke Stop	1
32	31840	Repair Kit (Incl. items marked *)	1

\*Indicates parts included in Repair Kit Ref. #31840.

# ENGINE TECUMSEH MODEL H35-45582N



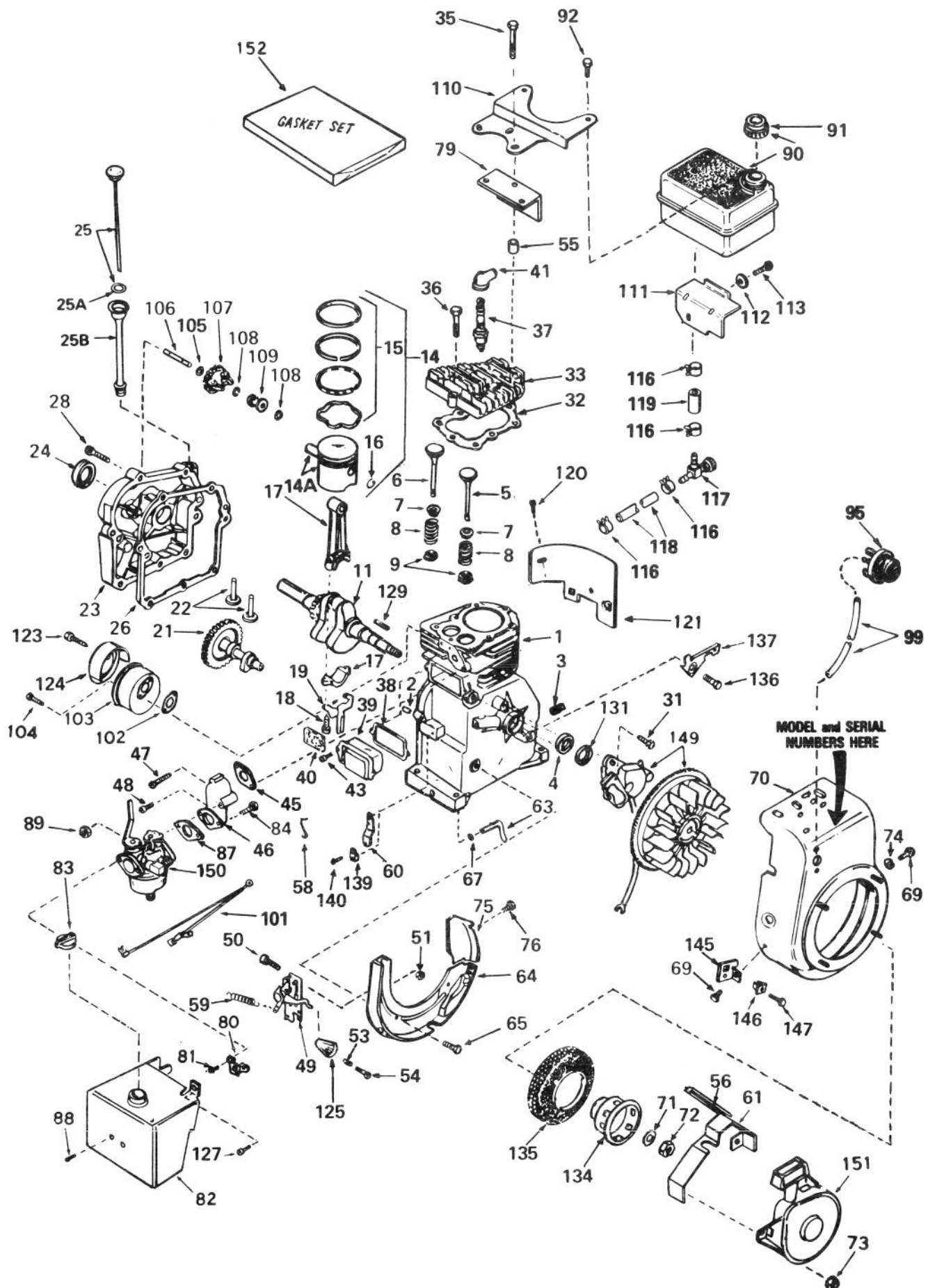
# ENGINE TECUMSEH MODEL H35-45582N

Ref. No.	Part No.	Description	No. Used	Ref. No.	Part No.	Description	No. Used
1	34708	Cylinder Assy. (Incl. #2, 3 & 4)	1	37	34251	Resistor Spark Plug (Canadian	
2	26727	Pin, Dowel	2		Canada	Regulations require RJ-17LM	
3	27642	Plug, Sq. Hd. Pipe, 1/4-18				resistor spark plug)	1
		(Oil Drain)	2	38	*31619	Gasket, Breather	1
4	32600	Seal, Oil	1	39	31337	Breather Assy. (Incl. #38 & 40)	1
5	29314B	Valve, Intake (Std.) (Incl. #9)	1	40	31410	Element, Breather	1
5	29315C	Valve, Intake (1/32" oversize)		41	610118	Cover, Spark Plug	1
		(Incl. #9)	1	43	650128	Screw, Fil. Hd.	2
6	29313C	Valve, Exhaust (Std.)		45	*26754	Gasket, Intake Pipe	1
		(Incl. #9)	1	46	28416A	Pipe, Intake (Incl. #47)	1
6	29315C	Valve, Exhaust (1/32" oversize)		47	650840	Screw, Fil. Hd.	1
		(Incl. #9)	1	48	650664	Screw, Fil. Hd.	1
7	31671	Cap, Upper Valve Spring	2	49	†33858A	Control Assy., Speed (Incl.	
8	31672	Spring, Valve	2			#50 thru 54)	1
9	31673	Cap, Lower Valve Spring	2	50	†650139	Screw, Fil. Hd.	2
11	34709	Crankshaft	1	51	†30322	Locknut, Hex	2
14	34514	Piston, Pin & Ring Assy. (Std.)		53	31342	Spring, Compression	1
		(Incl. # 14A, 15 & 16)	1	54	650549	Screw, Fil. Hd.	1
14	34515	Piston, Pin & Ring Assy. (.010		55	28212	Spacer, Tank Bracket	2
		oversize) (Incl. #14A, 15 & 16)	1	56	32576	Seal, Snow Guard	1
14	34516	Piston, Pin & Ring assy. (.020		58	31858	Link, Governor-to-throttle	1
		oversize) (Incl. #14A, 15 & 16)	1	59	31426	Spring, Extension	1
14A	32538B	Piston & Pin assy. (Std.)		60	31510	Lever, Governor	1
		(Incl. #16)	1	61	34127	Guard, Starter	1
14A	32548B	Piston & Pin Assy. (.010 over-		63	31334	Rod, Governor	1
		size) (Incl. #16)	1	64	†33342	Baffle, Blower Housing	1
14A	32549B	Piston & Pin Assy. (.020 over-		65	650561	Screw, Hex Washer Hd.	2
		size) (Incl. #16)	1	67	28277	Washer, Flat	1
15	28986	Ring Set, Piston (Std.)	1	69	29212	Screw, Hex Hd.	2
15	28987	Ring set, Piston (.010 oversize)	1	70	34813	Housing, Blower	1
15	28988	Ring Set, Piston (.020 oversize)	1	71	650815	Washer, Belleville	1
16	20381	Ring, Piston Pin Retaining	2	72	650816	Nut, Flywheel	1
17	30963B	Rod Assy., Connecting (Incl.		73	29752	Nut & Lockwasher	4
		#18 & 19)	1	74	650168	Washer, Flat	1
18	32610A	Bolt, Connecting Rod	2	75	33341	Extension, Baffle	1
19	28594	Dipper, Oil	1	76	6750701	Screw, Hex Washer Hd.	
21	33149	Camshaft (Compression				Shakeproof Self-drilling	1
		Release)	1	79	33344	Baffle, Heat	1
22	27241	Lifter, Valve	2	80	32398	Bracket, Choke	1
23	34683	Cover, Cylinder (Incl. #		81	28820	Screw, Fil. Hd.	2
		24 & 106)	1	82	34411	Cover, Carburetor	1
24	26208	Seal, Oil	1	83	34585	Knob, Control	1
25	34676	Dipstick, Oil (Incl. #25A)	1	84	6202	Screw, Hex Hd.	2
25A	33590	"O" Ring	1	87	*26756	Gasket, Carburetor	1
25B	33893A	Tube, Oil Fill	1	88	650257	Screw, Pan Hd.	2
26	*27677	Gasket, Cylinder Cover	1	89	29752	Nut & Lockwasher	2
28	650488	Screw, Hex Hd.	7	90	34711	Tank, Fuel (Incl. #91)	1
31	650489	Screw, Hex Hd.	2	91	34210	Cap, Fuel Tank	1
32	*29953B	Gasket, Cylinder Head	1	92	650665	Screw, Hex Washer Hd.,	
33	30579	Head, Cylinder	1			Self-tap	2
35	650694A	Screw, Hex Flange Hd.	5	95	34814	Primer Assy.	1
36	6021A	Screw, Hex Flange Hd.	3	99	32180B	Line, Primer	1
37	33636	Plug, Spark (Champion J-8		101	34241	Wire, Ground	1
		or equivalent)		102	*30081	Gasket, Muffler	1
		Except for Canada	1	103	30996	Muffler	1

\*Indicates parts included in Gasket Set, Ref. #152.

†In original production, the speed control assembly is riveted to the blower housing baffle. Replacement speed control assembly includes screws and nuts for mounting. Replacement baffle has threaded holes.

# ENGINE TECUMSEH MODEL H35-45582N (Continued)



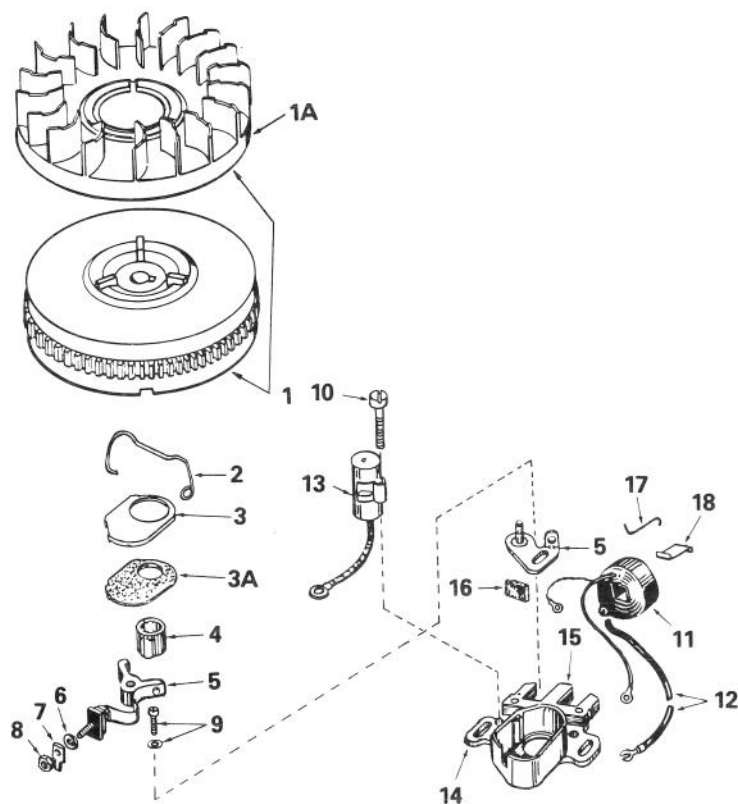
# ENGINE TECUMSEH MODEL H35-45582N (Continued)

Ref. No.	Part No.	Description	No. Used
104	650493	Screw, Hex Hd.	2
105	30590A	Washer, Flat	1
106	30574	Shaft, Mechanical Governor	1
107	30591	Gear Assy., Governor (Incl. #105)	1
108	29193	Ring, Retaining	2
109	30588A	Spool, Governor	1
110	28371B	Bracket, Fuel Tank Mounting	1
111	34182	Bracket, Fuel Tank Mounting	1
112	650675	Washer, Flat	1
113	650805	Screw, Hex Hd. w/Belleville Washer	1
116	26460	Clamp, Fuel Line	4
117	32961	Valve, Fuel Shut-off	1
118	30705	Line, Fuel	1
119	29774	Line, Fuel	1
120	650128	Screw, Fil. Hd.	1
121	29745	Extension, Blower Housing	1
123	650665	Screw, Hex Washer Hd., Self-tap.	1
124	30997	Cover, Muffler	1
125	32410	Knob, Control	1
127	650765	Screw, Hex Washer Hd., Self-drilling	1

Ref. No.	Part No.	Description	No. Used
129	610961	Key, Flywheel	1
131	33876	Gasket, Stator	1
134	34694	Cup, Starter	1
135	33668	Screen, Starter	1
136	30200	Screw, Hex Washer Hd. Self-tap.	1
137	34212	Bracket, Hold Down	1
139	31335	Clamp, Governor Lever	1
140	650548	Screw, Hex Washer Hd.	1
145	34126	Bracket, Grommet Mounting	1
146	28545	Grommet, Plastic	1
147	650643	Screw, Pan Hd. Self-tap.	1
149	611030	Magneto (The complete magneto is not available as an assembly. The magneto number is shown for reference purposes only. Order component parts individually, as shown in parts list.)	1
150	632114	Carburetor (Incl. #87)	1
151	590473	Starter Assy., Rewind	1
152	33233	Gasket Set (Incl. items marked *)	1

\*Indicates parts included in Gasket Set, Ref. #152.

†In original production, the speed control assembly is riveted to the blower housing baffle. Replacement speed control assembly includes screws and nuts for mounting. Replacement baffle has threaded holes.

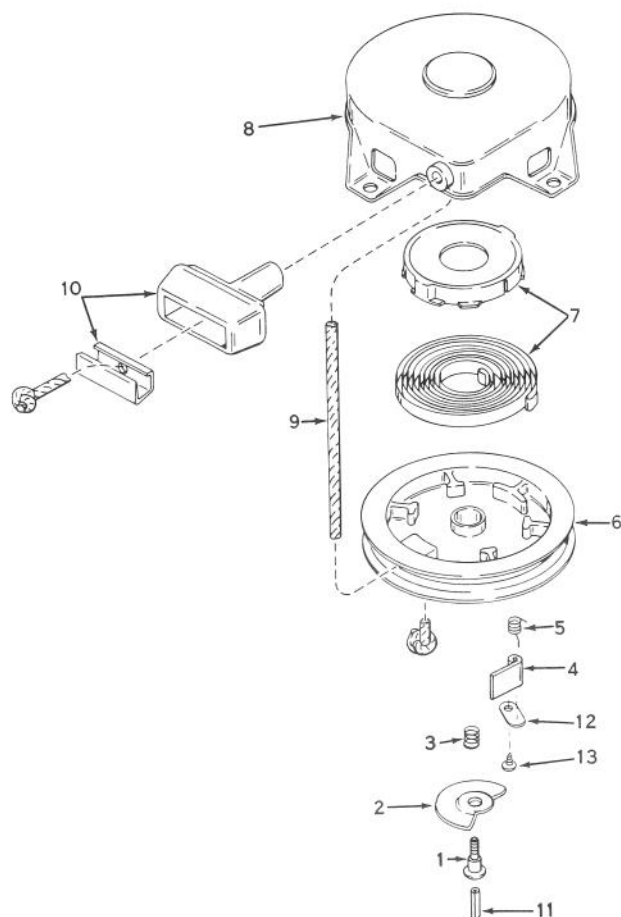


## MAGNETO NO. 611030

Ref. No.	Part No.	Description	No. Used
1	611029	Flywheel (Incl. #1A)	1
1A	610933	Fan, Blower	1
2	30551	Spring, Breaker Box Dust Cover	1
3	610947	Cover, Dust	1
3A	610955	Gasket, Dust Cover	1
4	30992	Cam, Breaker	1
5	30547A	Contact Assembly, Breaker	1
6	610385	Washer, Terminal	1
7	33356	Tab, Ground Terminal	1
8	610408	Nut, Terminal	1

Ref. No.	Part No.	Description	No. Used
9	29181	Screw & Washer, Breaker	1
10	610593	Screw, Condenser	1
11	30560A	Coil Assy. (Incl. #12)	1
12	30554	Wire, Lead	1
13	30548B	Condenser	1
14	30545	Core & Plate	1
15	30561B	Stator Assy. (Incl. #2, 3, 3A, 5 thru 14, 16 & 17)	1
16	30549	Felt, Cam Wiper	1
17	31311	Clip, Coil Locking	1

\*The complete magneto is not available as an assembly. The magneto number is shown for reference purposes only. Order component parts individually, as shown in parts list.



## REWIND STARTER NO. 590473

Ref. No.	Part No.	Description	No. Used
1	590409A	Screw	1
2	490474	Cam, Dog	1
3	590411	Spring, Brake	1
4	490148	Dog, Starter	1
5	590475	Spring, Dog	1
6	590478	Pulley	1
7	490414	Spring & Keeper Assy.	1

Ref. No.	Part No.	Description	No. Used
8	490415	Housing Assy., Starter (Incl. #1)	1
9	590451A	Rope, Starter	1
10	590387	Handle Assy., Starter	1
11	590459	Pin, Centering	1
12	590476	Retainer, Dog	1
13	490477	Screw	1



## PRODUCT CHANGES

In an effort to make improvements available to TORO owners as quickly as possible, minor changes are incorporated into Toro's products from time to time that do not become immediately shown in the Parts Catalog. If such a change apparently has been made in your unit, which is not reflected in your manual, see your TORO Distributor or his Authorized TORO Service Dealer for information and part numbers.

## IDENTIFICATION AND ORDERING

### MODEL AND SERIAL NUMBERS

The Snowthrower has two identification numbers: a model number and a serial number. The two numbers are stamped on a decal which is located on back of engine mounting plate. In any correspondence concerning the Snowthrower, supply model and serial numbers to assure that correct information and replacement parts are obtained.

To order replacement parts from an Authorized TORO Service Dealer, supply the following information:

1. Model and serial numbers of the Snowthrower.
2. Part number, description, and quantity of part(s) desired.

**Note:** Do not order by reference number if a parts catalog is being used; use the PART NUMBER.

## The Toro Promise

### A ONE YEAR LIMITED WARRANTY

*The Toro Company promises to repair any TORO Product if defective in materials or workmanship. The following time periods from the date of purchase apply:*

Residential Product . . . . . 1 Year  
Residential Products Used Commercially . . . 45 Days

*The costs of parts and labor are included, but the customer pays the transportation costs. Just return any residential product to an Authorized TORO Service Dealer or TORO Distributor.*

Should you feel your TORO Product is defective and wish to rely on The Toro Promise, the following procedure is recommended:

1. Contact any Authorized TORO Service Dealer, TORO Master Service Dealer, or TORO Distributor (the Yellow Pages of your telephone directory is a good reference source).
2. He will either instruct you to return the product to him or recommend another Authorized TORO Service outlet which might be more convenient.
3. Bring the product along with your original sales slip, or other evidence of purchase date, to the service dealer.
4. The servicing dealer will inspect the unit, advise you whether the product is defective and, if so, make all repairs necessary to correct the defect without extra charge to you.

If for any reason you are dissatisfied with the dealer's analysis of the defect or the service performed, you may contact us.

Write:

TORO Consumer Service Department  
8111 Lyndale Avenue South  
Minneapolis, Minnesota 55420

The above remedy of product defects through repair by an Authorized TORO Service Dealer is the purchaser's sole remedy for any defect.

THERE IS NO OTHER EXPRESS WARRANTY. ALL IMPLIED WARRANTIES OF MERCHANTABILITY AND

FITNESS FOR USE ARE LIMITED TO THE DURATION OF THE EXPRESS WARRANTY.

Some states do not allow limitations on how long an implied warranty lasts, so the above limitation may not apply to you.

This warranty applies only to parts or components which are defective and does not cover repairs necessary due to normal wear, misuse, accidents, or lack of proper maintenance. Regular, routine maintenance of the unit to keep it in proper operating condition is the responsibility of the owner.

All warranty repairs reimbursable under The Toro Promise must be performed by an Authorized TORO Service Dealer using Toro approved replacement parts.

Repairs or attempted repairs by anyone other than an Authorized TORO Service Account are not reimbursable under The Toro Promise. In addition, these unauthorized repair attempts may result in additional malfunctions, the correction of which is not covered by warranty.

THE TORO COMPANY IS NOT LIABLE FOR INDIRECT, INCIDENTAL OR CONSEQUENTIAL DAMAGES IN CONNECTION WITH THE USE OF THE PRODUCT INCLUDING ANY COST OR EXPENSE OF PROVIDING SUBSTITUTE EQUIPMENT OR SERVICE DURING PERIODS OF MALFUNCTION OR NON-USE.

Some states do not allow the exclusion or limitation of incidental or consequential damages, so the above limitation or exclusion may not apply to you.

This warranty gives you specific legal rights, and you may also have other rights which vary from state to state.

## COUNTRIES OTHER THAN THE UNITED STATES OR CANADA

Customers who have purchased TORO products exported from the United States or Canada should contact their TORO Distributor (Dealer) to obtain guarantee policies for your country, province or state. If for any reason

you are dissatisfied with your Distributor's service or have difficulty obtaining guarantee information, contact the TORO importer. If all other remedies fail, you may contact us at The Toro Company.