



Hand Throttle Kit

Serial Number 40000000 and After Workman® HDX Utility Vehicle

Model No. 07408

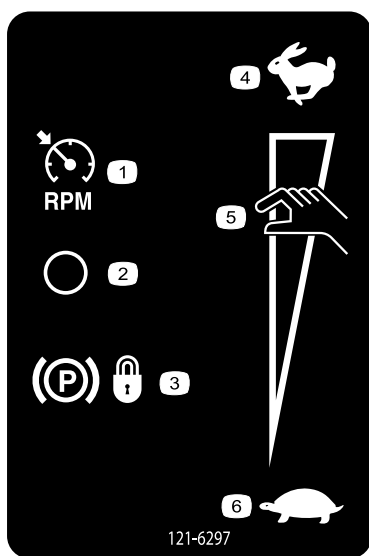
Installation Instructions

Safety

Safety and Instructional Decals



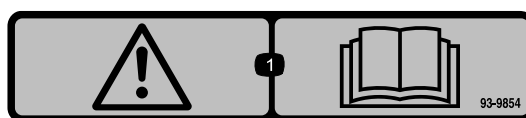
Safety decals and instructions are easily visible to the operator and are located near any area of potential danger. Replace any decal that is damaged or missing.



121-6297

decal121-6297

- 1. RPM gauge
- 2. Off
- 3. Parking brake—lock
- 4. Fast
- 5. Hand throttle
- 6. Slow



decal93-9854

93-9854

- 1. Warning—read the *Operator's Manual*.

Installation

Loose Parts

Use the chart below to verify that all parts have been shipped.

Procedure	Description	Qty.	Use
1	No parts required	–	Prepare to install the kit.
2	No parts required	–	Remove the hood.



Procedure	Description	Qty.	Use
3	No parts required	–	Remove the center console panel and seats.
4	No parts required	–	Remove the coolant tank, ROPS shield, and seat shroud.
5	Parking-brake switch Hex-washer head screw(10–24 x 1/2 inch)	1 2	Install the parking-brake switch.
6	Relay Hex-washer head bolt (1/4 x 5/8 inch)	3 2	Install the relays.
7	Hand throttle bracket Flange bolt (5/16 x 1 inch) Flange nut (5/16 inch)	1 4 4	Install the hand-throttle bracket.
8	Hand throttle Bolt (10–24 x 5/8 inch) Serrated nut (10–32) Mode switch	1 2 2 1	Install the hand throttle and mode switch.
9	Wire harness Cable tie	1 5	Install the wire harness.
10	No parts required	–	Install the seat shroud, ROPS shield, and coolant tank.
11	No parts required	–	Install the center console panel and seats.
12	No parts required	–	Connect the battery.
13	No parts required	–	Lower the bed.
14	No parts required	–	Install the hood.
15	No parts required	–	Test the hand throttle kit.

1

- B. Remove the bed support from the storage brackets on the back of the ROPS panel (Figure 1).

Preparing to Install the Kit

No Parts Required

Procedure

1. Park the machine on a level surface.
2. Engage the parking brake.
3. For machine models with a utility bed, perform the following:
 - A. Remove the bed from the vehicle. Refer to the vehicle *Operator's Manual* for the removal procedure.

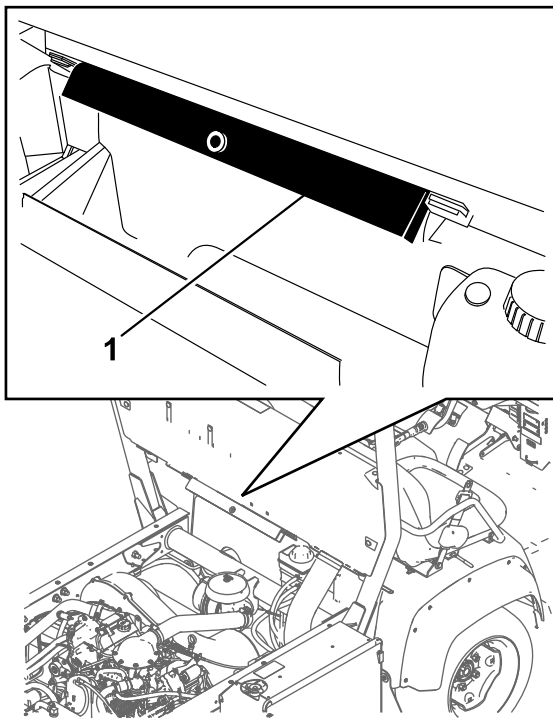


Figure 1

g212349

1. Bed support

- C. Push the bed support onto the cylinder rod, ensuring that the support end tabs rest on the end of the cylinder barrel, and on the cylinder-rod end (Figure 2).

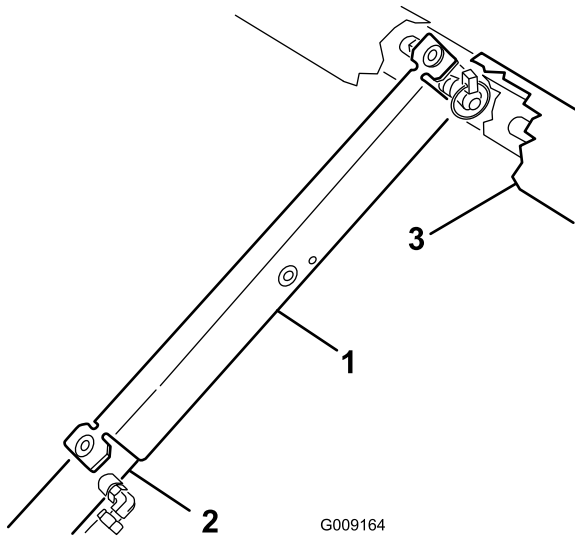


Figure 2

G009164

g009164

1. Bed support
2. Cylinder barrel
3. Bed

4. Shut off the engine and remove the key.
5. Disconnect the battery as follows:
 - A. Squeeze the battery cover to release the tabs from the battery base (Figure 3).

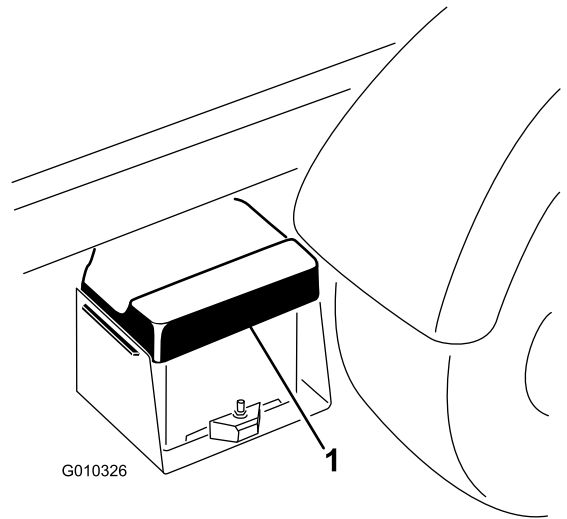


Figure 3

G010326

g010326

1. Battery cover

- B. Remove the battery cover from the battery base (Figure 3).
- C. Remove the terminal of the positive battery cable from the battery post (Figure 4).

Note: Ensure that the terminal positive battery cable does not touch the battery post.

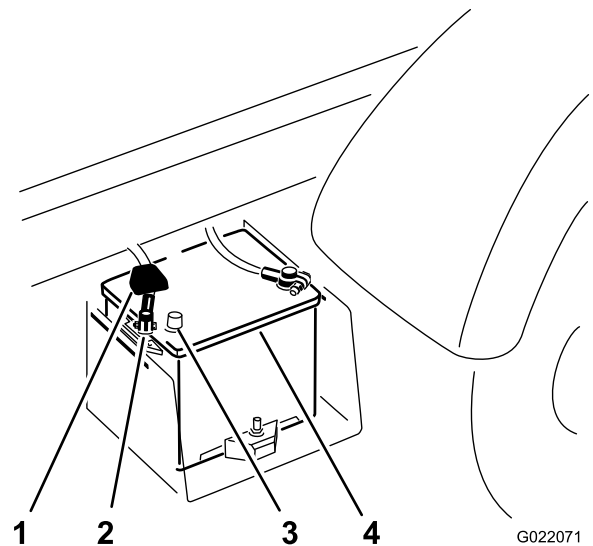


Figure 4

G022071

g022071

1. Terminal cover
2. Positive terminal
3. Battery post
4. Battery

2

Removing the Hood

No Parts Required

Procedure

1. While grasping the hood in the headlight openings, lift up on the hood to release the lower mounting tabs from the frame slots (Figure 5).

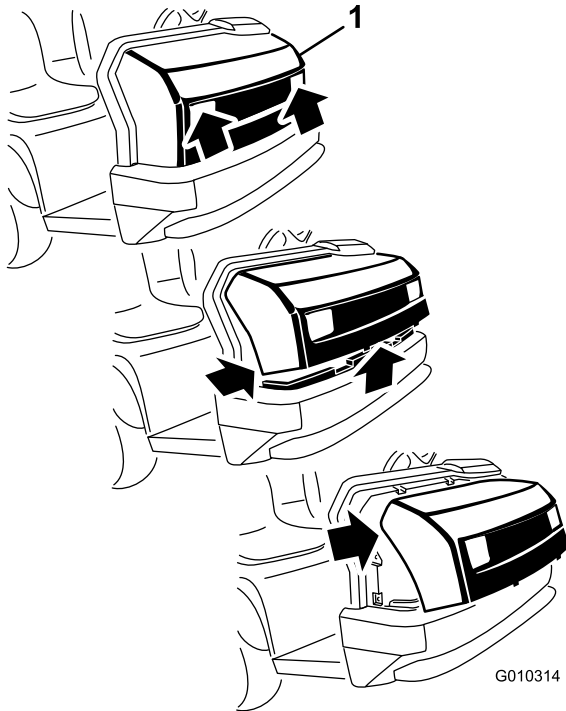


Figure 5

1. Hood

2. Pivot the bottom of the hood upward until the top mounting tabs can be pulled from the frame slots (Figure 5).
3. Pivot the top of hood forward and unplug the wire connectors from the headlights (Figure 5).
4. Remove the hood.

3

Removing the Center Console Panel and Seats

No Parts Required

Procedure

1. Unscrew and remove all knobs from console levers and from the gear shift lever (Figure 6).

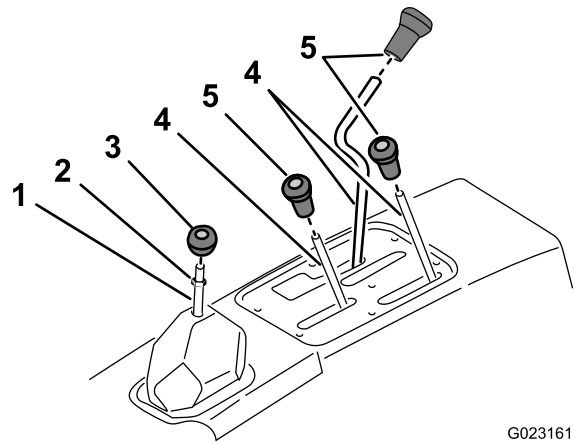


Figure 6

- | | |
|-------------------|-----------------|
| 1. Shifter rod | 4. Control rod |
| 2. Jam nut | 5. Control knob |
| 3. Shifter handle | |

2. Remove the jam nut from the gear shift lever (Figure 6).
3. Remove the 6 screws securing the outside edge of the cover plate of the center console to the chassis and remove the cover plate (Figure 7).

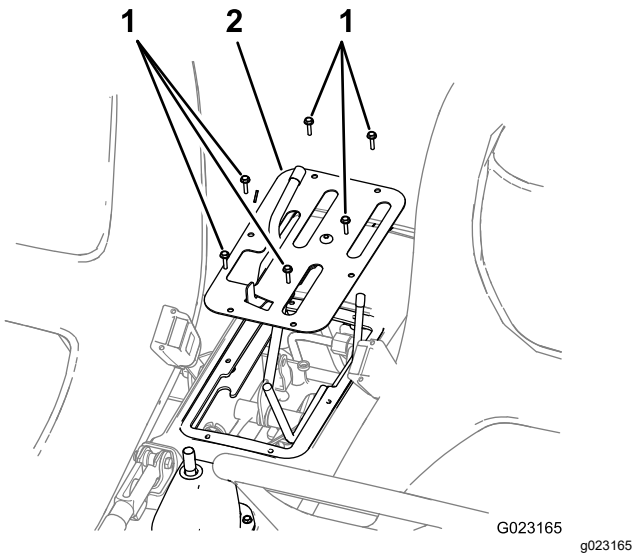


Figure 7

- 1. Screw
- 2. Cover plate

-
- 4. Remove the 8 socket-head bolts that secure the seat rails of the seat to the chassis and remove the seats ([Figure 8](#)).

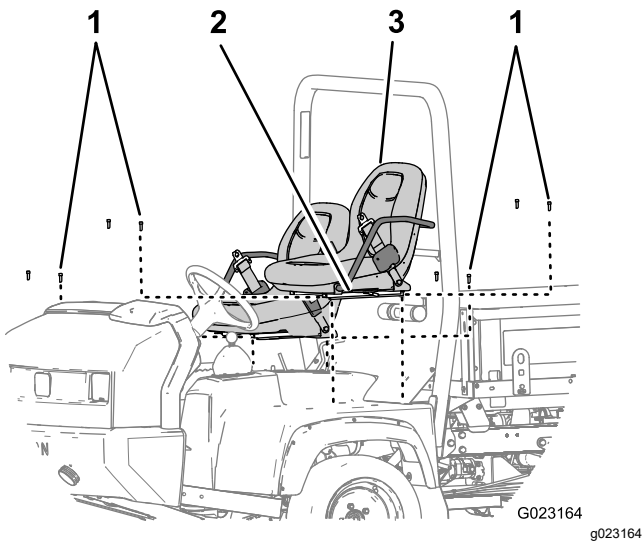


Figure 8

- 1. Socket-head bolts
- 2. Seat rail
- 3. Seat

4

Removing the Coolant Tank, ROPS Shield, and Seat Shroud

No Parts Required

Removing the Coolant Tank

- 1. Lift the coolant tank up and out of the support bracket on the back of the ROPS shield ([Figure 9](#)).

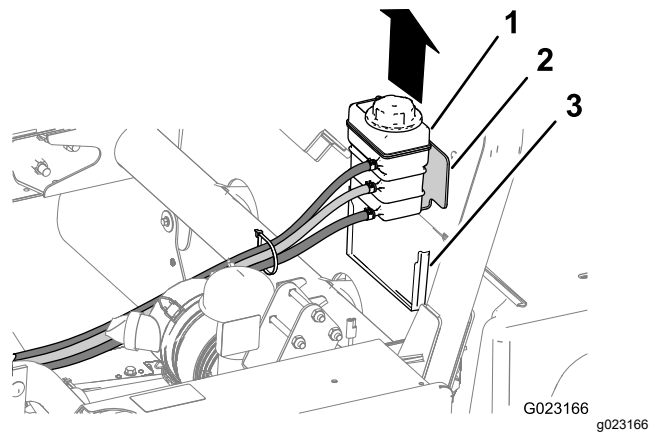


Figure 9

- 1. Coolant tank
- 2. Coolant-tank bracket
- 3. Support bracket

-
- 2. Set the coolant tank upright onto the engine/chassis.

Removing the ROPS Panel

- 1. Remove the 6 carriage bolts and 6 nuts that secure the ROPS panel to the mounting brackets on the rollbar ([Figure 10](#)).

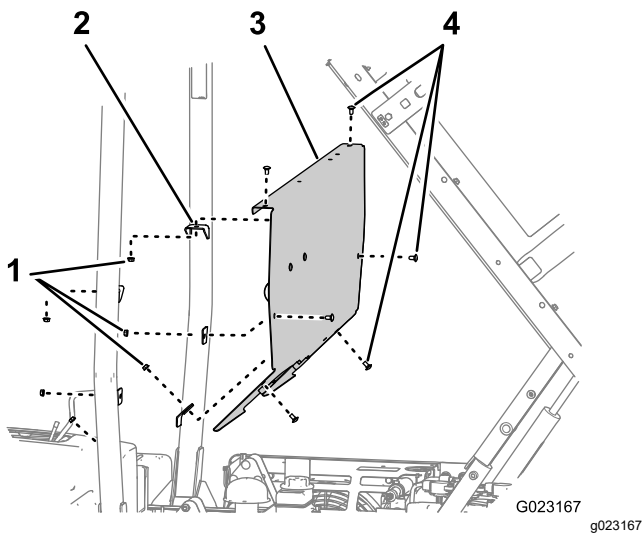


Figure 10

- 1. Nuts
- 2. Mounting bracket (ROPS bar)
- 3. ROPS panel
- 4. Carriage bolts

- 2. Remove the ROPS panel from the machine (Figure 10)

Removing the Seat Shroud

- 1. Ensure that the parking brake is set (Figure 11).

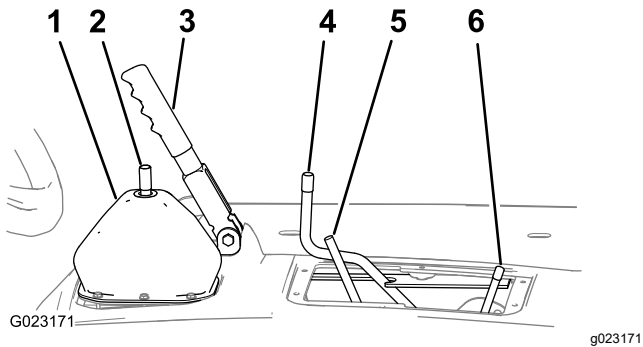


Figure 11

- 1. Gear selector boot
- 2. Rod—gear selector
- 3. Parking brake
- 4. Rod—differential lock
- 5. Rod—hydraulic bed lift
- 6. Rod—high-low range shifter

- 2. Move the rod for the differential lock forward and to the right (Figure 11).

- 3. Lift the seat shroud up and remove it from the machine (Figure 12).

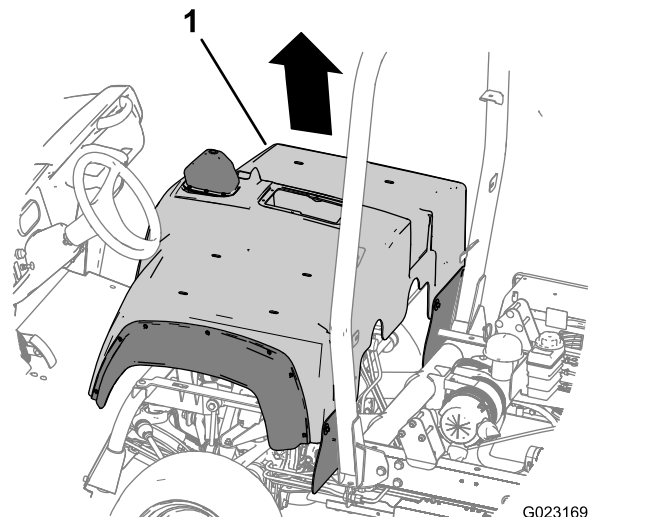


Figure 12

- 1. Seat shroud

5

Installing the Parking-Brake Switch

Parts needed for this procedure:

1	Parking-brake switch
2	Hex-washer head screw(10–24 x 1/2 inch)

Procedure

- 1. Move the lower-dust boot for the gear selector away from the left side of the parking brake assembly (Figure 13).

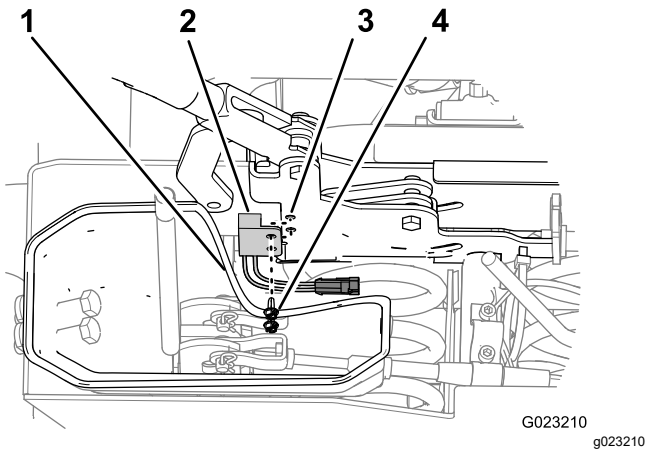


Figure 13

1. Lower-dust boot
2. Brake switch
3. Parking brake
4. Hex-washer head screw

2. Align the holes in the parking-brake switch with the holes in the left side of the parking brake ([Figure 13](#)).
3. Secure the switch to the brake with the 2 hex-washer head screws ([Figure 13](#)).

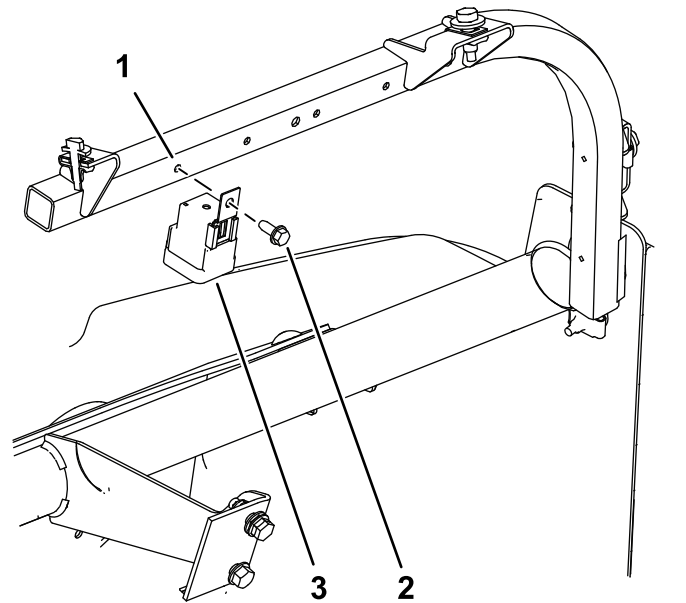


Figure 14

1. Pre-drilled hole in dash-support tube
2. Bolt (1/4 x 5/8 inch)
3. Relay (single location)

2. Align the 2 relays back-to-back ([Figure 15](#)).
3. Secure the 2 relays to the dash-support tube with the bolt (1/4 x 5/8 inch) in the pre-drilled hole on the right ([Figure 15](#)).

6

Installing the Relays

Parts needed for this procedure:

3	Relay
2	Hex-washer head bolt (1/4 x 5/8 inch)

Procedure

1. Install the relay (single location) to the dash-support tube with the bolt (1/4 x 5/8 inch) at the pre-drilled hole on the left ([Figure 14](#)).

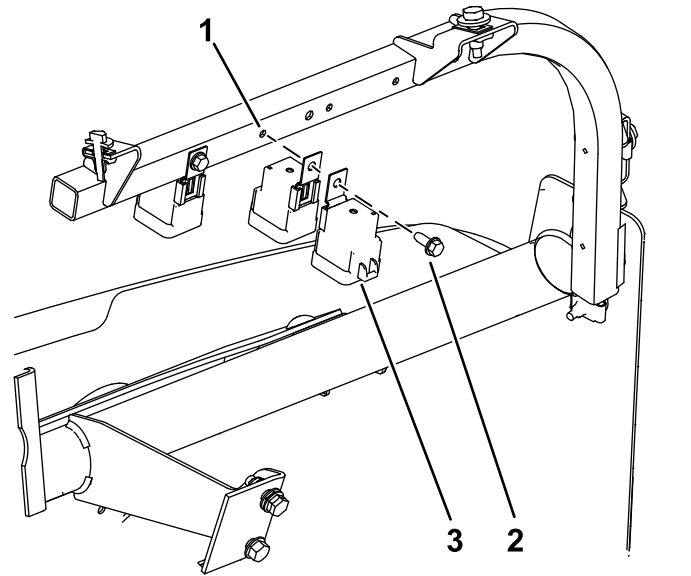


Figure 15

1. Pre-drilled hole in dash-support tube
2. Bolt (1/4 x 5/8 inch)
3. Relay (back-to-back location)

7

Installing the Hand-Throttle Bracket

Parts needed for this procedure:

1	Hand throttle bracket
4	Flange bolt (5/16 x 1 inch)
4	Flange nut (5/16 inch)

Installing the Hand Throttle Bracket

1. Remove the 3 flange bolts and 3 flange nuts that secure the dash panel at the lower center location to the dash support bracket (Figure 16).

Note: Discard the bolts and nuts.

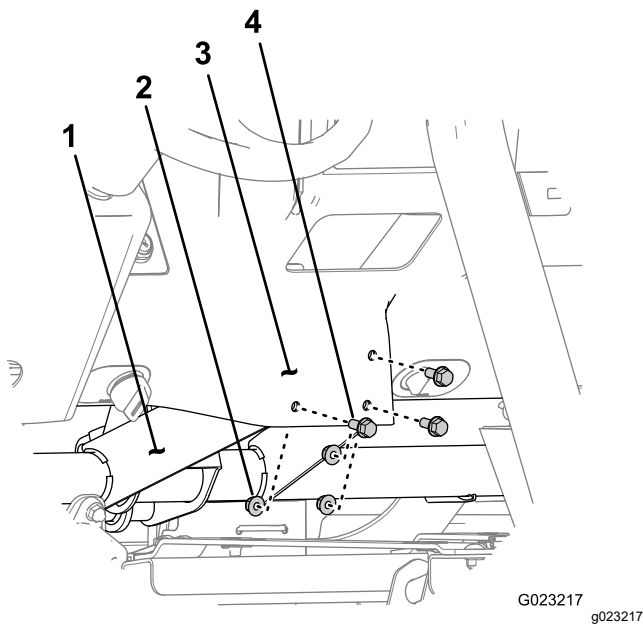


Figure 16

- | | |
|-----------------|----------------|
| 1. Dash support | 3. Dash panel |
| 2. Flange nut | 4. Flange bolt |

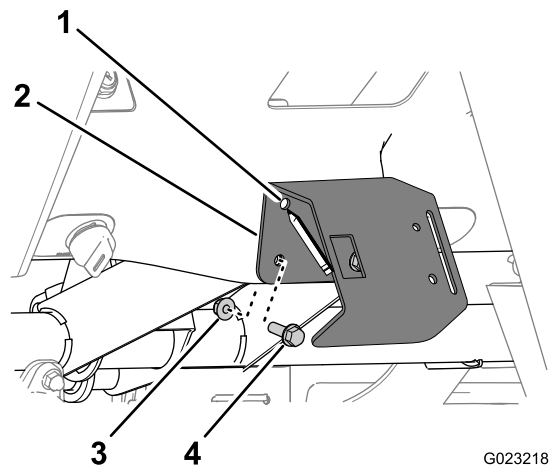


Figure 17

- | | |
|--------------------------|--------------------------------|
| 1. Bracket hole | 3. Flange nut |
| 2. Hand-throttle bracket | 4. Flange bolt (5/16 x 1 inch) |

2. Align the holes in the hand-throttle bracket with the holes in the dash panel (Figure 16).
3. Secure the hand-throttle bracket to the dash panel with the 3 flange bolts (5/16 x 1 inch) and 3 flange nuts (Figure 17).

8

Installing the Hand Throttle and Mode Switch

Parts needed for this procedure:

1	Hand throttle
2	Bolt (10–24 x 5/8 inch)
2	Serrated nut (10–32)
1	Mode switch

Installing the Hand Throttle

1. Remove the knob (if it is installed) from the lever of the hand throttle (Figure 18).

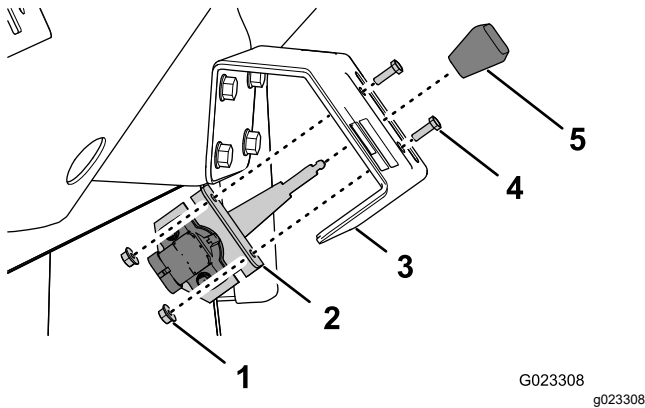


Figure 18

- | | |
|---------------------------|-----------------------|
| 1. Nut (10–24) | 4. Bolt (10–24 x 5/8) |
| 2. Hand-throttle assembly | 5. Knob |
| 3. Hand-throttle bracket | |

2. Align the lever hand throttle to the slot in the hand-throttle bracket, and align the holes in the mounting bracket that is attached to the hand throttle to the hand-throttle bracket (Figure 18).
3. Secure the hand throttle to the hand-throttle bracket with the 2 bolts (10–32 x 5/8) and 2 nuts (Figure 18).

Installing the Mode Switch

1. Align the mode switch to the hand-throttle bracket with the alignment pin at the connectors and the channel in the body of the switch down (Figure 19).

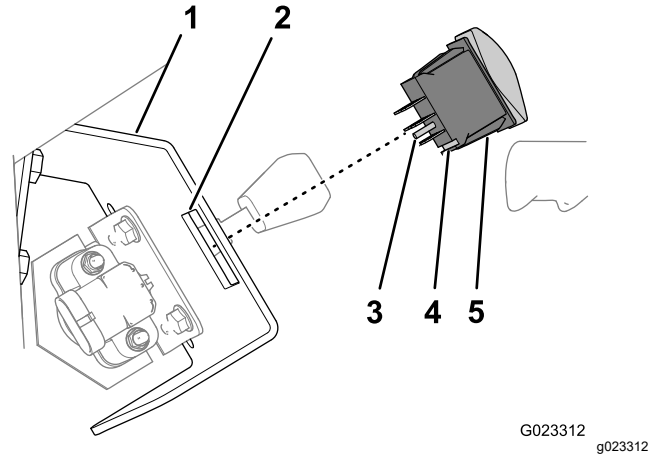


Figure 19

- | | |
|--------------------------|----------------|
| 1. Hand-throttle bracket | 4. Channel |
| 2. Rectangular opening | 5. Mode switch |
| 3. Alignment pin | |

2. Snap the switch into the rectangular opening in the hand-throttle bracket (Figure 19).

9

Installing the Wire Harness

Parts needed for this procedure:

1	Wire harness
5	Cable tie

Connecting to the Main Harness Interconnections

1. At the front of the machine and adjacent to the fuse block, locate the 31-pin and 31-socket connectors for the front and rear wire harnesses for the machine (Figure 20).

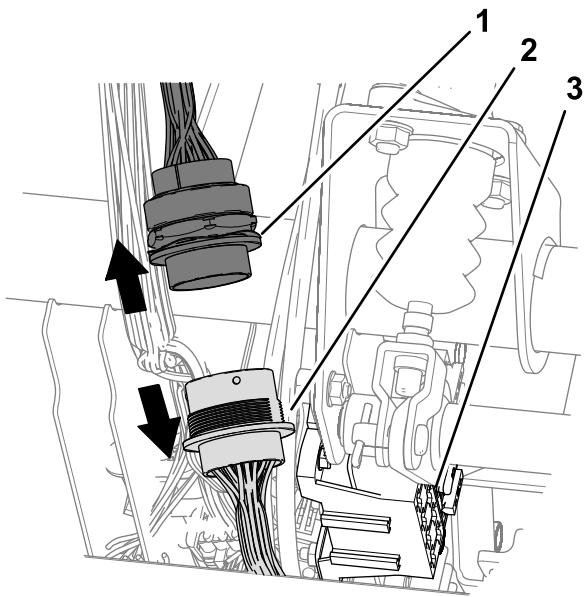
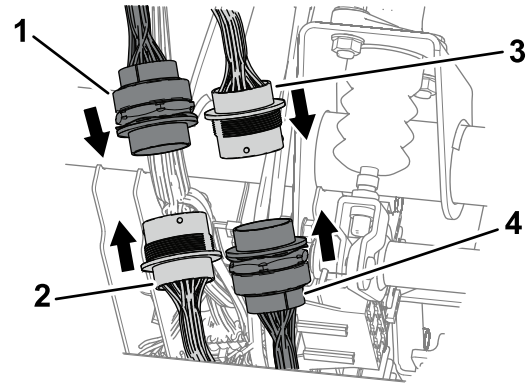


Figure 20

g211743

1. 31-pin connector (rear wire harness—machine)
2. 31-socket connector (front wire harness—machine)
3. Fuse block

2. Disconnect the 31-pin and 31-socket connectors for the front and rear wire harnesses ([Figure 20](#)).
3. Locate the 31-pin and 31-socket connectors located on the throttle kit harness ([Figure 21](#)).



g211742

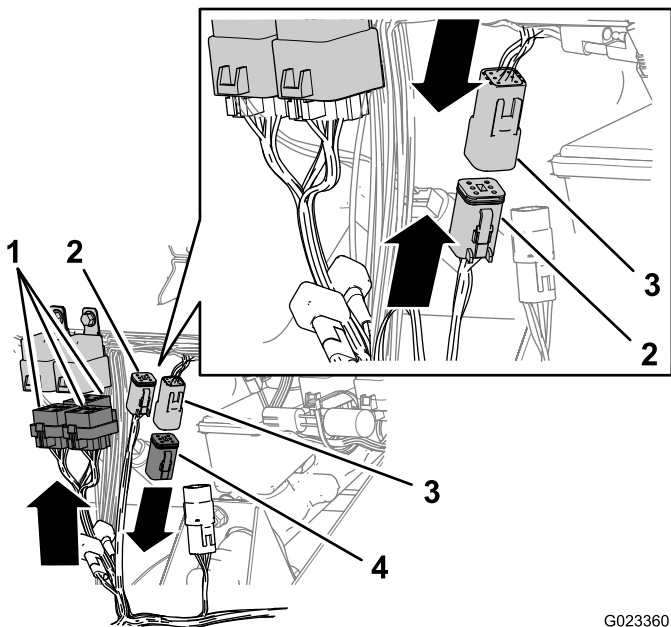
Figure 21

1. 31-pin connector (hand throttle harness)
2. 31-socket connector (front wire harness—machine)
3. 31-socket connector (rear wire harness—machine)
4. 31-pin connector (hand throttle harness)

4. Connect the 31-pin connector of the throttle kit harness to the 31-socket connector for the front wire harness of the machine ([Figure 21](#)).
5. Connect the 31-socket connector for the throttle kit harness to the 31-pin connector for the rear wire harness of the machine ([Figure 21](#)).

Routing the Harness and Connecting the Relay Connectors

1. Route the branch of the wire harness with the 3 connectors with 5 sockets each (Figure 22) up to the relays that you installed in 6 Installing the Relays (page 7).



G023360
g023360

Figure 22

- | | |
|--|---|
| 1. Relay connectors (hand throttle harness—5-socket) | 3. Hand throttle pull-up connector (hand-throttle harness—6-socket) |
| 2. Hand throttle pull-up connector (machine harness—6-pin) | 4. Resistor |

2. Connect the 5-socket connectors to the relays (Figure 22).

Note: The relationship between relays and the 5-socket connectors is arbitrary.

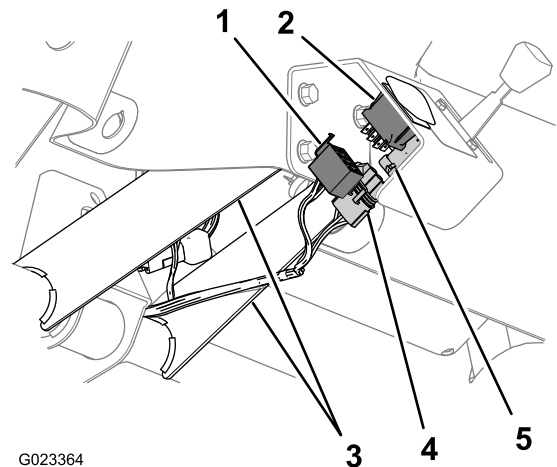
3. Remove the resistor from the 6-pin connector for the hand throttle up circuit (Figure 22).

Note: Retain the resistor and install it in the 6-pin connector if the hand throttle kit is removed from the machine.

4. Connect the 6-pin connector for the hand throttle pull-up circuit of the machine harness to the 6-socket connector of the hand throttle pull-up circuit of the hand-throttle harness (Figure 22).

Routing the Harness and Connecting the Hand Throttle and Mode Switch

1. Route the branch of the throttle kit harness between the vertical flanges of the dash support and back toward the hand throttle and mode switch (Figure 23).



G023364

g023364

Figure 23

- | | |
|--|---|
| 1. 8- socket connector (hand-throttle harness) | 4. 3-socket connector (hand-throttle harness) |
| 2. Mode-switch connector | 5. Hand-throttle connector |
| 3. Dash-support flanges | |

2. Connect the 3-socket connector of the throttle kit harness to the connector of the hand throttle (Figure 23).

3. Connect the 8-socket connector of the throttle kit harness to the connector of the mode switch (Figure 23).

Routing the Wire Harness

1. Route the branch of the wire harness of the kit with the 2-pin connector for the parking-brake switch down from the main harness interconnections that you connected in steps 4 and 5 of [Connecting to the Main Harness Interconnections \(page 9\)](#) and along the rear-wire harness for the machine ([Figure 21](#)).
2. Remove the 4 bolts that secure the lower cover to the machine ([Figure 24](#)).

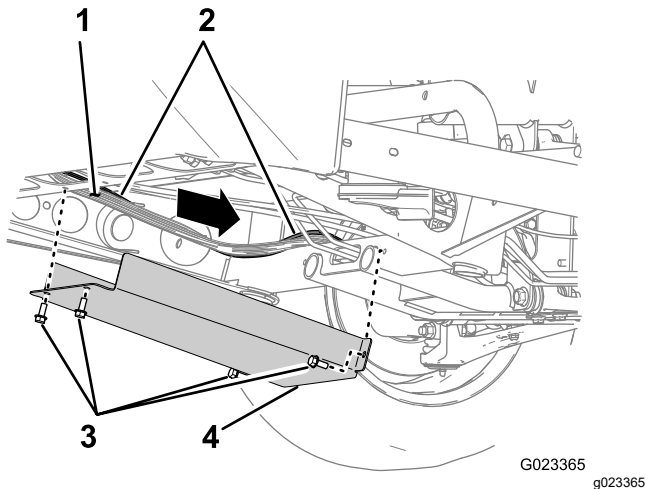


Figure 24

- | | |
|--------------------------------|----------------|
| 1. Rear-main harness (machine) | 3. Bolt |
| 2. Wire harness (kit) | 4. Lower cover |

3. Route the wire harness of the kit along the rear main harness of the machine and rearward over the cross channel of the frame as shown in [Figure 24](#).
4. Install the lower cover with the 4 bolts that you removed in step 2 ([Figure 24](#)).

5. Continue routing the wire harness of the kit along the lower-frame tube and then up behind the upper-control arm and the rear-support channel for the seat ([Figure 25](#), [Figure 26](#), and [Figure 27](#)).

Note: The wire harness of the kit will follow the rear main harness of the machine.

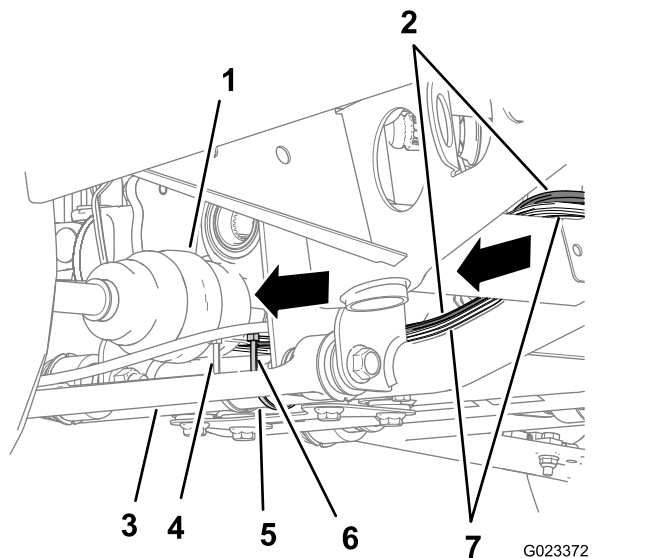


Figure 25

- | | |
|---------------------------------------|--------------------------------|
| 1. Drive shaft (4-wheel drive models) | 5. Lower-frame tube |
| 2. Wire harness (kit) | 6. Cable tie (kit) |
| 3. Lower-control arm | 7. Rear-main harness (machine) |
| 4. Cable tie (OEM) | |

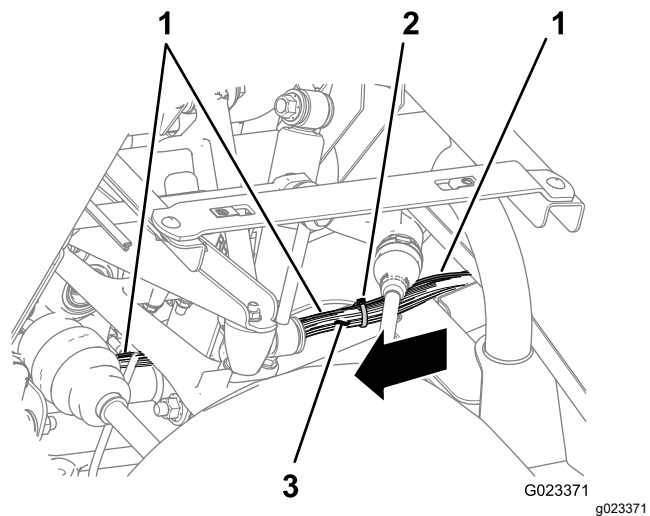


Figure 26

- | | |
|-----------------------|--------------------------------|
| 1. Wire harness (kit) | 3. Rear-main harness (machine) |
| 2. Cable tie (kit) | |

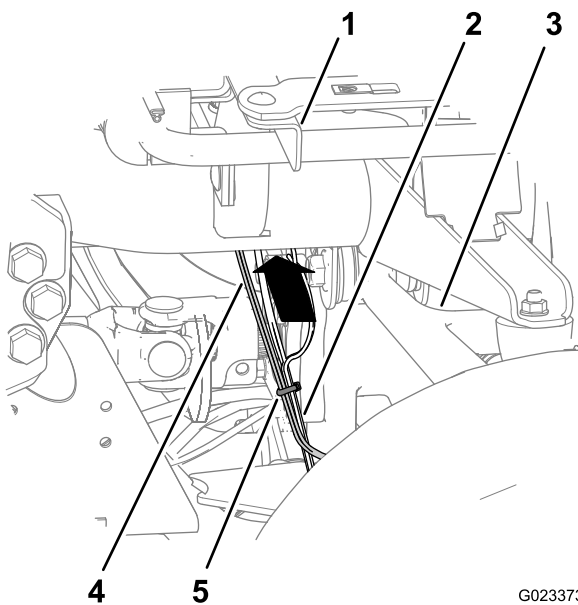


Figure 27

- | | |
|--------------------------------|-----------------------|
| 1. Seat-support channel (rear) | 4. Wire harness (kit) |
| 2. Rear-main harness (machine) | 5. Cable tie (kit) |
| 3. Upper-control arm | |

- Secure the wire harness of the kit to the rear-main harness with cable ties at the 2 locations shown in [Figure 26](#) and [Figure 27](#).
- Secure the wire harness of the kit to the lower-frame tube with a cable tie at the location shown in [Figure 25](#).

Connecting the Harness to the Parking-Brake Switch

- Route the branch of the wire harness for the kit with the 2-pin connector forward to the parking-brake switch ([Figure 28](#)) that you installed in [5 Installing the Parking-Brake Switch \(page 6\)](#).

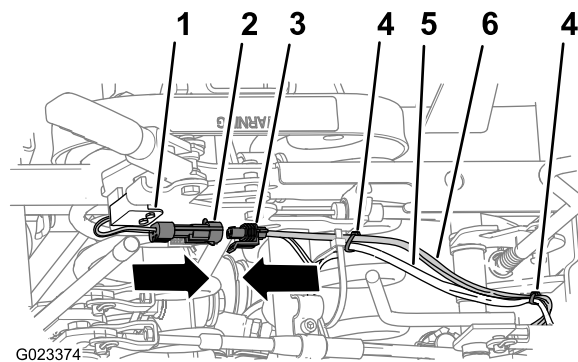


Figure 28

- | | |
|--|--------------------------------|
| 1. Parking-brake switch | 4. Cable tie (kit) |
| 2. 2-pin connector (parking-brake switch) | 5. Rear-main harness (machine) |
| 3. 2-pin socket connector (wire harness—kit) | 6. Wire harness (kit) |

- Connect the 2-pin socket connector of the wire harness of the kit to the 2-pin connector of the wire harness of the parking-brake switch ([Figure 28](#)).
- Secure the wire harness of the kit to the rear-main harness at the 2 location shown in [Figure 28](#).

10

Installing the Seat Shroud, ROPS Shield, and Coolant Tank

No Parts Required

Installing the Seat Shroud

- Align the opening in the seat shroud for the parking brake with the parking brake handle.
- Align the hole in the gear selector boot with the rod for the gear selector.
- Align the opening in the seat shroud for the rods for the lift bed control, high-low range shifter, and the differential lock.
- Lower the seat shroud down.
- Align the holes in the shroud for the seat mounting with the seat support brackets of the chassis.

Installing the ROPS Shield

1. Align the holes in the ROPS shield with the hole in the brackets on the rollbar (Figure 10).
2. Secure the ROPS shield to the rollbar with the 6 carriage bolts and 6 nuts (Figure 10) that you removed in step 1 of [Removing the ROPS Panel](#) (page 5).

Installing the Coolant Tank

1. Align the left and right flanges of the coolant-tank bracket with the coolant tank support on the ROPS shield (Figure 9).
2. Lower the tank into the support until the tank is firmly seated (Figure 9).

11

Installing the Center Console Panel and Seats

No Parts Required

Procedure

1. Align the holes in the seat rails with the holes in the shroud for the seat mounting positions (Figure 8).
2. Secure the seats to the chassis with the 8 socket-head bolts (Figure 8) that you removed in step 4 of [3 Removing the Center Console Panel and Seats](#) (page 4).
3. Torque the socket head bolts to 255 to 254 N·m (175 to 225 in-lb).
4. Align the center console panel over the control rods at the center console (Figure 7).
5. Secure the pane with the 6 screws (Figure 6) that you removed in step 3 of [3 Removing the Center Console Panel and Seats](#) (page 4).
6. Thread the jam nut onto the gear shift lever and thread the shift knob on the shift lever (Figure 6).
7. Align the shift pattern on the knob and then tighten the jam nut.
8. Thread the 3 control knobs that you removed in step 1 of [3 Removing the Center Console Panel and Seats](#) (page 4) onto the rods for the hydraulic bed lift, differential lock, and the high-low range shifter (Figure 6).

12

Connecting the Battery

No Parts Required

Procedure

1. Connect the positive battery cable to the battery (Figure 4).
2. Squeeze the battery cover, align the tabs to battery base, and release the battery cover (Figure 3).

13

Lowering the Bed

No Parts Required

Procedure

For machine models with a utility bed, perform the following:

1. Pull the bed support from the cylinder rod and remove the support (Figure 2).
2. Insert the bed support into the brackets on the back of the ROPS panel (Figure 1).
3. Install the bed; refer to the *Operator's Manual*.

14

Installing the Hood

No Parts Required

Procedure

1. Align the bottom of the hood to the top of the bumper (Figure 5).
2. Connect the lights.
3. Insert the top mounting tabs into the frame slots (Figure 5).

4. Insert the lower mounting tabs into the pockets in the bumper (Figure 5).
5. Ensure that the hood is fully engaged in the top, sides, and bottom grooves (Figure 5).

15

Testing the Hand Throttle Kit

No Parts Required

Testing the Accessory Mode

1. Move the machine to a clear level surface.
2. Move the hand throttle to the SLOW position (Figure 29).

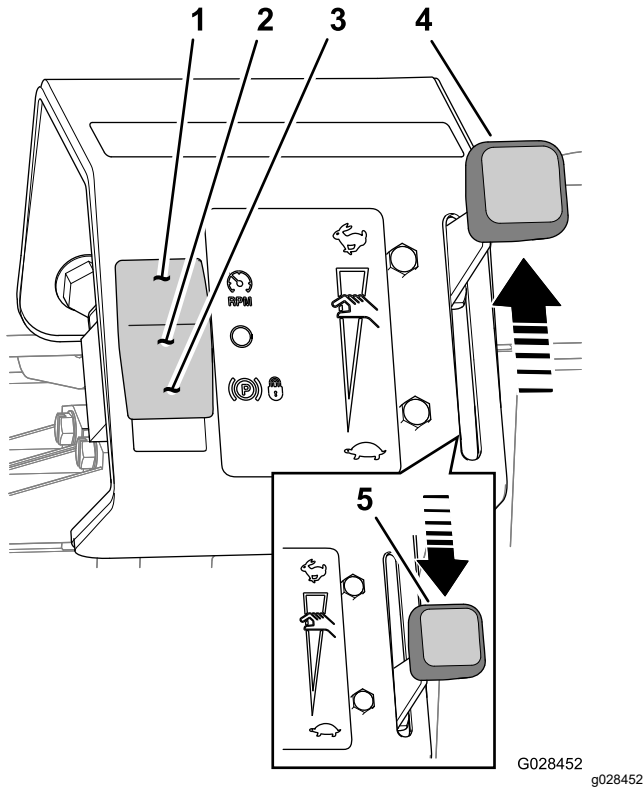


Figure 29

- | | |
|--|----------------------------------|
| 1. Mode switch (limit ground-speed position) | 4. Hand throttle (Fast position) |
| 2. Mode switch (Off position) | 5. Hand throttle (Slow position) |
| 3. Mode switch (throttle-lock position) | |
3. Press the mode switch down to the throttle-lock position (Figure 29).

4. Set the parking brake, place the gear selector in the NEUTRAL position, and start the machine.
5. Move the hand throttle toward the FAST position (Figure 29).

Note: The engine speed should rise.

6. Move the hand throttle to the SLOW position (Figure 29).
7. Place your foot on the service brake.
8. Release the parking brake.
9. Move the hand throttle toward the FAST position (Figure 29).

Note: The engine speed should remain at idle.

10. Set the parking brake and shut off the machine.

Testing the Normal Ground-Speed Mode

1. Move the hand throttle to the SLOW position (Figure 29).
2. Press the mode switch up to the OFF position (Figure 29).
3. Set the parking brake, place the gear selector in the NEUTRAL position, and start the machine.
4. Press on the throttle pedal partially.

Note: The engine speed should rise.

5. Release the throttle pedal.
6. Move the hand throttle toward the FAST position (Figure 29).

Note: The engine speed should remain at idle.

7. Shut off the machine.

Testing the Limit Ground-Speed Mode

1. Move the hand throttle to the SLOW position (Figure 29).
2. Press the mode switch up to the limit ground-speed position (Figure 29).
3. Set the parking brake, place the gear selector in the NEUTRAL position, and start the machine.
4. Press down the throttle pedal partially.

Note: The engine speed should remain at idle.

5. While pressing the throttle pedal, move the hand throttle toward the FAST position (Figure 29).

Note: The engine speed should rise.

Product Overview

Controls

Hand Throttle

The hand throttle is used in conjunction with the mode switch to limit the maximum engine speed or set a fixed engine speed (Figure 30).

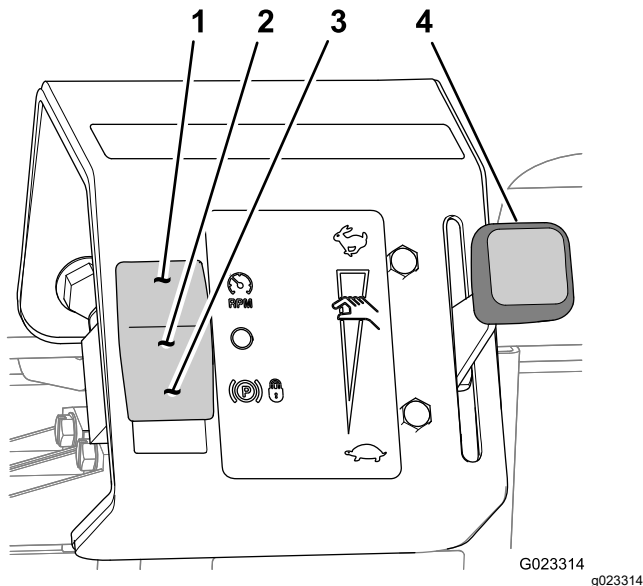


Figure 30

1. Mode switch (limit ground-speed position)
2. Mode switch (Off position)
3. Mode switch (throttle-lock position)
4. Hand throttle

Mode Switch

The mode switch (Figure 30) is used to control the function of the hand throttle for the following operations:

- **Limit Ground-speed Mode** position—Use this switch position to limit the maximum travel speed of the machine while performing machine-based operations.
- **Off** position—Use this switch position for normal control of the machines ground speed.
- **Accessory Mode** position—Use this switch position to control the engine speed when the machine is used to power accessory equipment in a stationary position.

Operation

Using the Limit Ground-Speed Mode

Setting the maximum engine speed

1. Move the machine to a clear level surface.
2. Move the hand throttle to the Slow position (Figure 30).
3. Press the mode switch up to the limit ground-speed position (Figure 30).
4. Move the gear selector to the gear for the desired ground speed.
5. Fully press down the throttle pedal.
6. Move the hand throttle toward the fast position (Figure 30) until the desired ground speed is reached.
7. Release the throttle pedal.
8. Perform the ground speed-limited task, such as applying topdressing material.

Note: To drive the machine at the maximum ground speed limit that you set, fully press down on the throttle pedal.

Using the Normal Ground-Speed Mode

1. Move the machine to a clear level surface.
2. Move the hand throttle to the Slow position (Figure 30).
3. Press the mode switch up to the Off position (Figure 30).
4. Operate the machine as instructed in the *Owner's Manual*.

Using the Accessory Mode

1. Move the machine to the work site.
2. Ensure that the gear selector is in the NEUTRAL position and the parking brake is set.
3. Press the mode switch down to the throttle-lock position ([Figure 30](#)).
4. Move the hand throttle to the desired engine speed ([Figure 30](#)).
5. Perform the accessory based task, such as using the tank mixing or hand sprayer operations.
6. Move the hand throttle to the SLOW position ([Figure 30](#)).
7. Press the mode switch up to the OFF position ([Figure 30](#)).

Troubleshooting

Accessory Operation

Problem	Possible Cause	Corrective Action
The engine is not controlled by the hand throttle when in the accessory mode.	<ol style="list-style-type: none">1. The parking brake is not engaged.2. The parking-brake switch is damaged.	<ol style="list-style-type: none">1. Engage the parking brake.2. Replace the parking-brake switch.
The engine power is too low for the accessory.	<ol style="list-style-type: none">1. The hand throttle is set to a slow position.	<ol style="list-style-type: none">1. Increase the engine power by moving the hand throttle to the desired engine-speed position.
The engine power is too high for the accessory.	<ol style="list-style-type: none">1. The hand throttle is set to a fast position.	<ol style="list-style-type: none">1. Decrease the engine power by moving the hand throttle to the desired engine-speed position.

Ground Speed Operation

Problem	Possible Cause	Corrective Action
The machine does not accelerate to the desired speed with the throttle pedal.	<ol style="list-style-type: none">1. The hand throttle is set to a lower engine-speed limit.2. The mode switch is set to the limit ground-speed mode.	<ol style="list-style-type: none">1. Move the hand throttle toward the FAST position until you reach the desired ground speed.2. Move the mode switch to the OFF position.
The ground speed of the machine is too slow for the speed-limited task.	<ol style="list-style-type: none">1. The hand throttle is set to a slow position.	<ol style="list-style-type: none">1. Move the hand throttle to a faster position.
The ground speed of the machine is too fast for the speed-limited task.	<ol style="list-style-type: none">1. The hand throttle is set to a fast position.	<ol style="list-style-type: none">1. Move the hand throttle to a slower position.

Notes:



Count on it.