



Sonic Boom™ Kit Multi-Pro® Turf Sprayers

Model No. 41089 - 230000001 and up.

Parts Catalog

Ordering Replacement Parts

To order replacement parts, please supply: the part number, the quantity, and the description of each part desired.

Understanding Reference Numbers

Each identified part in an illustration has a reference number. The reference number for a part also appears in the parts list, along with other information about the part.

This catalog uses two special reference number formats, one to indicate parts in a service assembly and another to indicate the quantity of a given part in an illustration.

Service Assembly Reference Numbers

Parts in service assemblies have reference numbers in the form **a:b**. The **a** represents the reference number of the entire service assembly and the **b** represents a sequential number unique to each part within the service assembly.

For example, a wheel assembly might be identified by reference number 6, the tire by **6:1**, the valve by **6:2**, and the wheel by **6:3**. When you order the assembly identified by reference number 6, you receive all parts identified by reference numbers 6:1, 6:2, and 6:3. However, you may also order any part individually. Reference numbers of this type appear in illustrations and in part lists.

Reference Numbers Indicating Quantity

In an illustration, if a reference number indicates more than one part, the reference number has the form **nX y**. The **n** represents the quantity of the part, the **X** is the multiplication symbol, and the **y** represents the reference number.

For example, in an illustration, the reference number **2X 37** means that two of the parts identified by reference number 37 are indicated.

Part Description Abbreviations

Part descriptions in this catalog may include the following abbreviations.

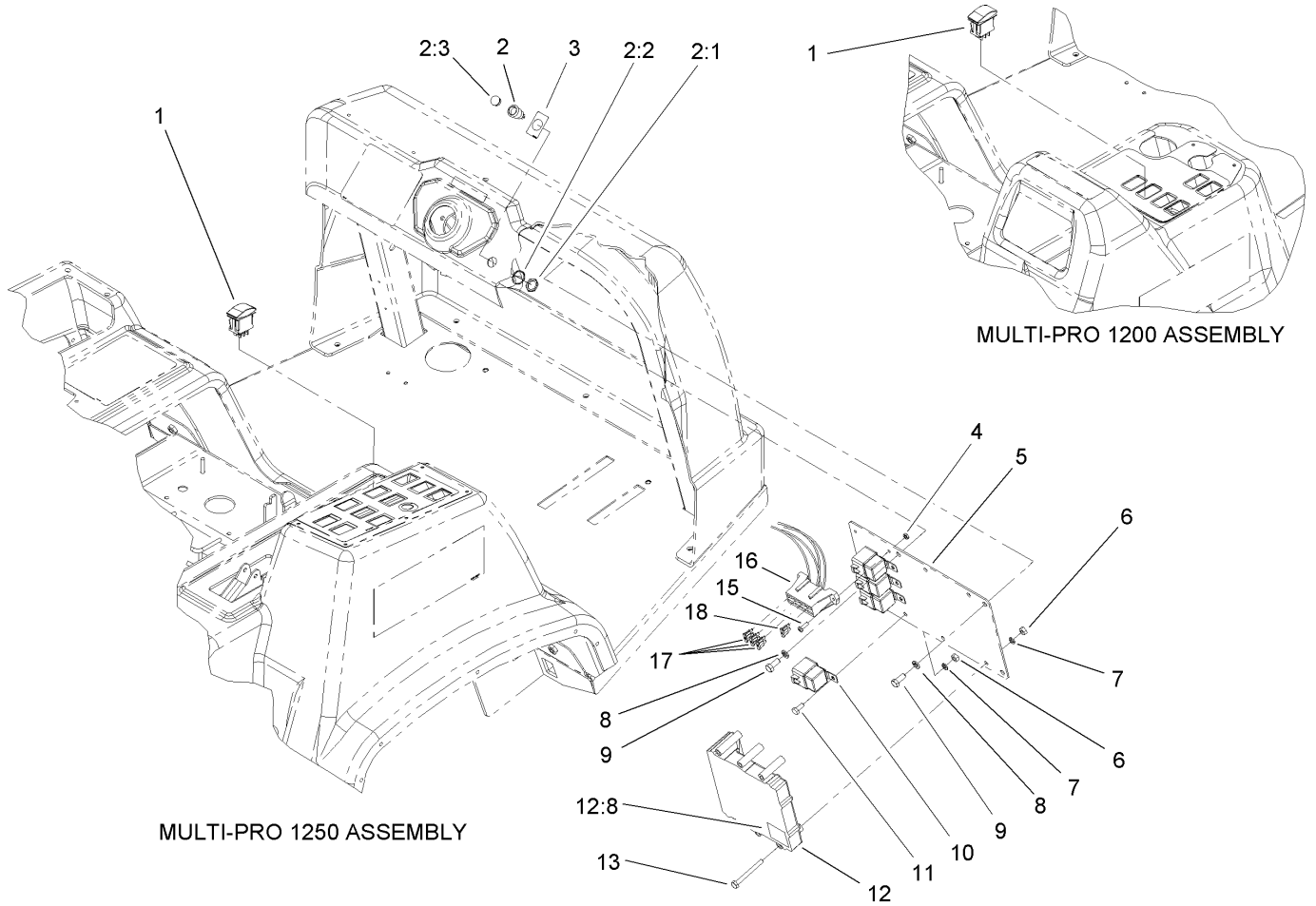
AR.	as required	HWHTF.	hex washer head thread forming
ASM.	assembly	HYD.	hydraulic
CARR.	carriage	INC.	incorporated
DEG.	degrees	LH.	left hand
FH.	flat head	NI.	nylon insert
GA.	gauge	PPH.	phillips pan head
HF.	hex flange	PTH.	phillips truss head
HH.	hex head	PTO.	power take off
HHF.	hex head flange	RH.	right hand
HHFTF.	hex head flange thread forming	SFH.	slotted fillister head
HJ.	hex jam	SHH.	slotted hex head
HLH.	hex lag head	SHWH.	slotted hex washer head
HOC.	height-of-cut	SPH.	slotted pan head
HS.	hex	SQH.	square head
HSBH.	hex socket button head	SRH.	slotted round head
HSFH.	hex socket flat head	STD.	standard
HSH.	hex socket head	TAP.	self tapping
HWH.	hex washer head	TTH.	torx truss head

Footnotes

- ❶ Not illustrated
- ❷ Not serviced separately

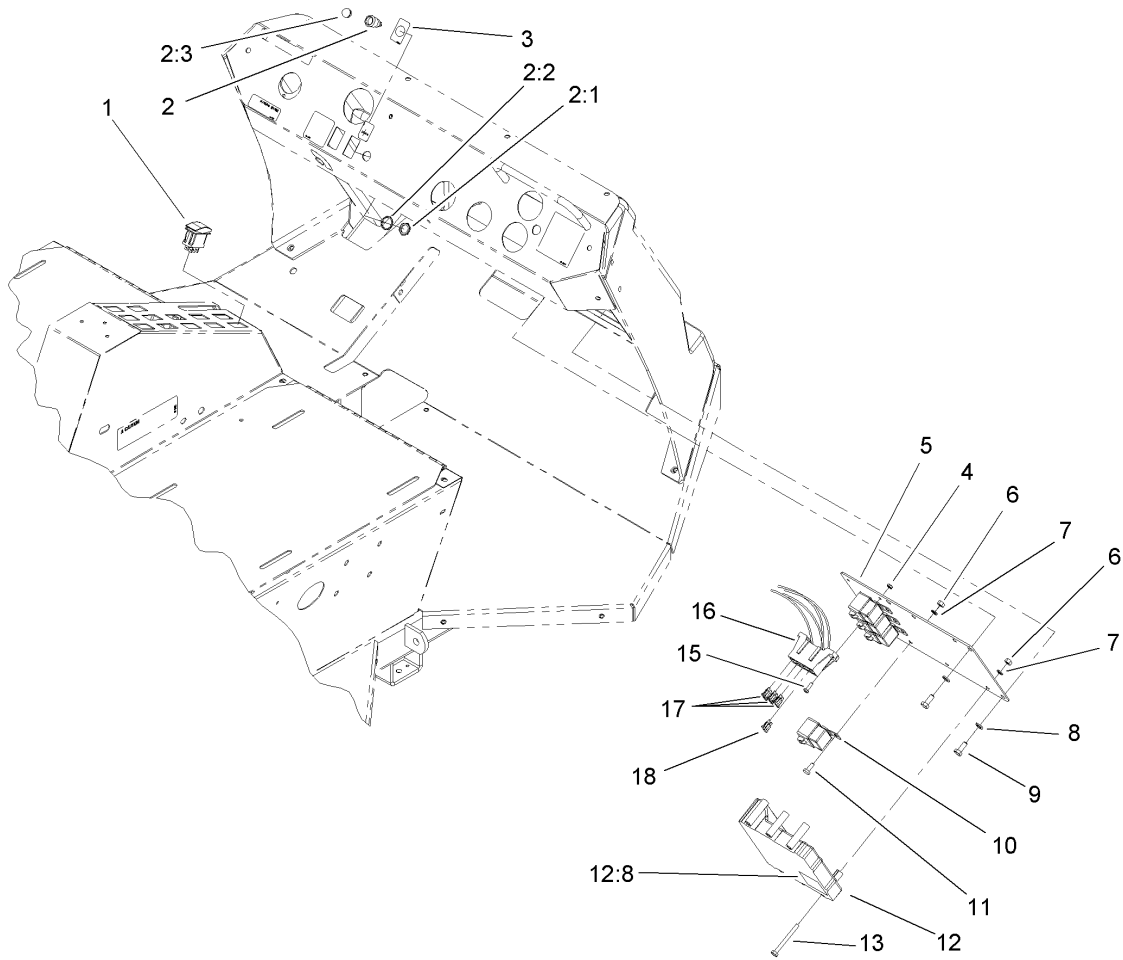
Contents

Description	Page
Multi Pro 1200 and 1250 Mounting Assembly 3
Multi-Pro 5600 Mounting Assembly 4
Sensor Assembly 5



Multi Pro 1200 and 1250 Mounting Assembly

Ref	Part No.	Qty.	Description
1	100-8590	1	Switch-Rocker, Dpdt (on-Off-On)
2	44-2210	1	Light-Indicator, Red
2:1	218-535	1	Nut-Hex
2:2	218-536	1	Washer-Lock
2:3	218-533	1	Lens
① 2:4		1	Bulb
3	94-8582	1	Decal
4	3217-26	2	Nut-Hex
5	94-8564-03	1	Plate-Mount, Ecu
6	3217-5	8	Nut-Hex
7	3253-3	8	Washer-Lock
8	3253-4	2	Washer-Lock
9	322-3	2	Screw-HH
10	70-1480	4	Relay
11	321-3	4	Screw-HH
12	92-5720	1	Controller-Electronic
12:8	93-8053	1	Decal
13	321-15	4	Screw-HH
15	3290-500	2	Screw-PPH
16	106-5215	1	Harness-Sonic Boom
17	218-578	3	Fuse-10 Amp
18	110928	1	Fuse-5 Amp
① 99	109103	1	Fuse-30 Amp (for Vehicle Fuse Block)
① 99	94-8604	1	Decal-Box, Diagnostic



Multi-Pro 5600 Mounting Assembly

Ref	Part No.	Qty.	Description
1	100-8590	1	Switch-Rocker, Dpdt (on-Off-On)
2	44-2210	1	Light-Indicator, Red
2:1	218-535	1	Nut-Hex
2:2	218-536	1	Washer-Lock
2:3	218-533	1	Lens
① 2:4		1	Bulb
3	94-8582	1	Decal
4	3217-26	2	Nut-Hex
5	94-8564-03	1	Plate-Mount, Ecu
6	3217-5	8	Nut-Hex
7	3253-3	8	Washer-Lock
8	3253-4	2	Washer-Lock
9	322-3	2	Screw-HH
10	70-1480	4	Relay
11	321-3	4	Screw-HH
12	92-5720	1	Controller-Electronic
12:8	93-8053	1	Decal
13	321-15	4	Screw-HH
15	3290-500	2	Screw-PPH
16	106-5215	1	Harness-Sonic Boom
17	218-578	3	Fuse-10 Amp
18	110928	1	Fuse-5 Amp
① 19		1	Multi-Pro 5600 ASM
① 99	109103	1	Fuse-30 Amp (for Vehicle Fuse Block)

Ref	Part No.	Qty.	Description
① 99	94-8604	1	Decal-Box, Diagnostic

NOTES

NOTES

