



**Count on it.**

Form No. 3393-927 Rev B

# Parts Catalog

## Remote Hydraulics Manifold Kit Heavy-Duty Workman® Vehicles

Model No. 110-2626



# Ordering Replacement Parts

To order replacement parts, please supply the part number, the quantity, and the description of each part desired.

## Understanding Reference Numbers

Each identified part in an illustration has a reference number. The reference number for a part also appears in the parts list, along with other information about the part.

This catalog uses two special reference number formats, one to indicate parts in a service assembly and another to indicate the quantity of a given part in an illustration.

## Service Assembly Reference Numbers

Parts in service assemblies have reference numbers in the form a:b. The a represents the reference number of the entire service assembly and the b represents a sequential number unique to each part within the service assembly.

For example, a wheel assembly might be identified by reference number 6, the tire by 6:1, the valve by 6:2, and the wheel by 6:3. When you order the assembly identified by reference number 6, you receive all parts identified by reference numbers 6:1, 6:2, and 6:3. However, you may also order any part individually. Reference numbers of this type appear in illustration and in parts lists.

## Reference Numbers Indicating Quantity

In an illustration, if a reference number indicates more than one part, the reference number has the form nX y. The n represents the quantity of the part, the X is the multiplication symbol, and the y represents the reference number.

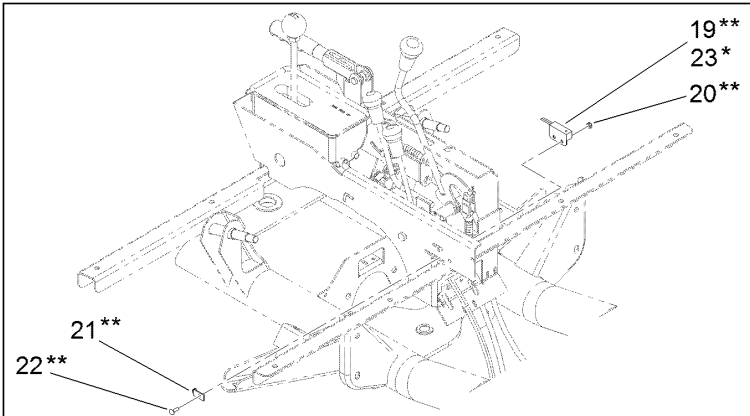
For example, in an illustration, the reference number 2X 37 means that two of the parts identified by reference number 37 are indicated.

# Contents

Remote Hydraulics Manifold Assembly No. 110-2626 ..... 4

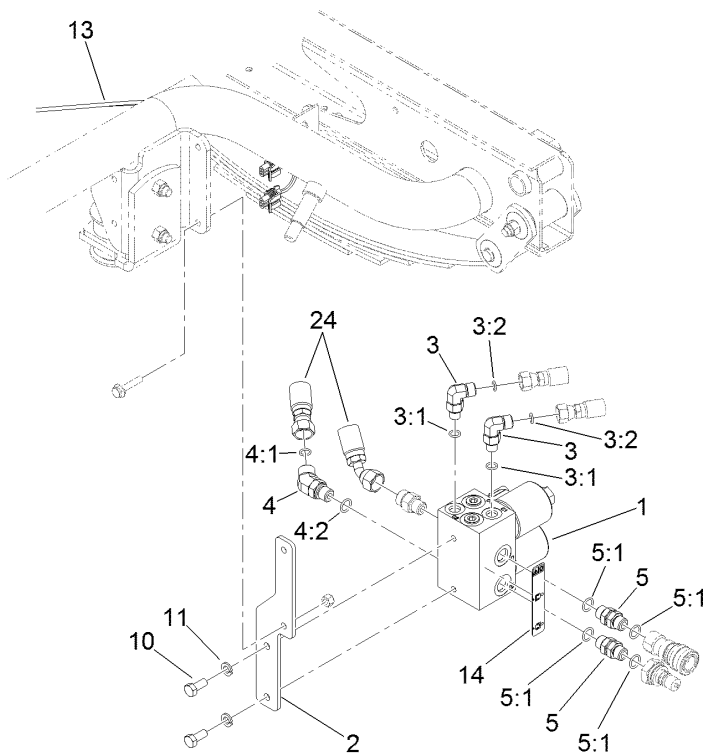
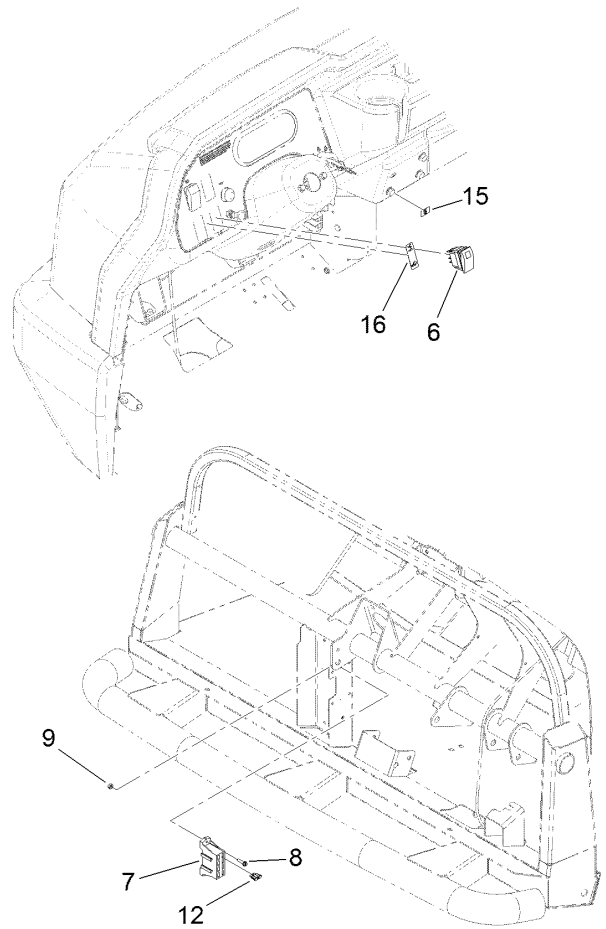
Manifold Assembly No. 110-2625 ..... 6

# Remote Hydraulics Manifold Assembly No. 110-2626

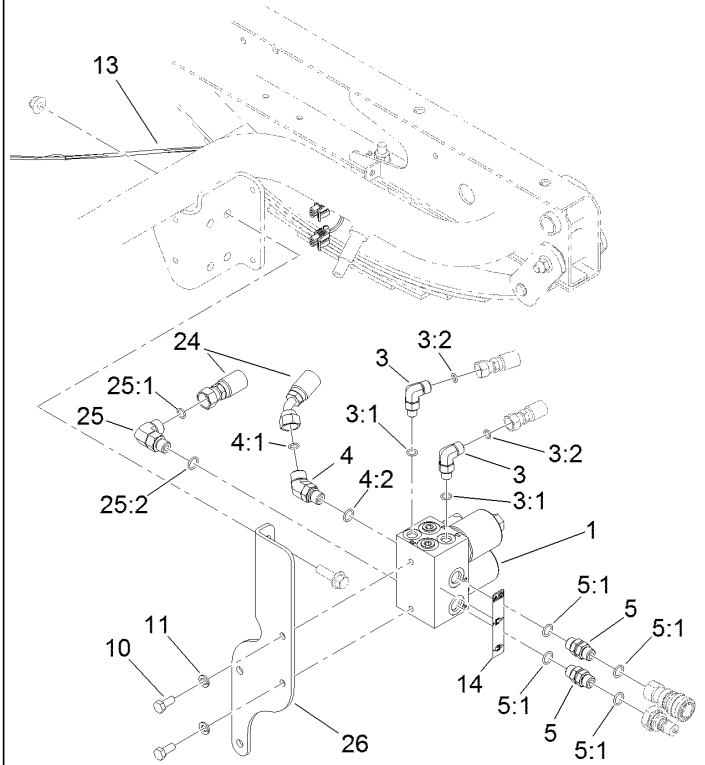


\* Item 23 not included in Kit 110-2626.  
It is needed for use on Workman Vehicles  
serial numbers 240000000-240999999

\*\*Items 19-22 not included in Kit 110-2626.  
Must be ordered separately for Workman Vehicles  
serial numbers 250000000-26000299



HDX and HDX-D

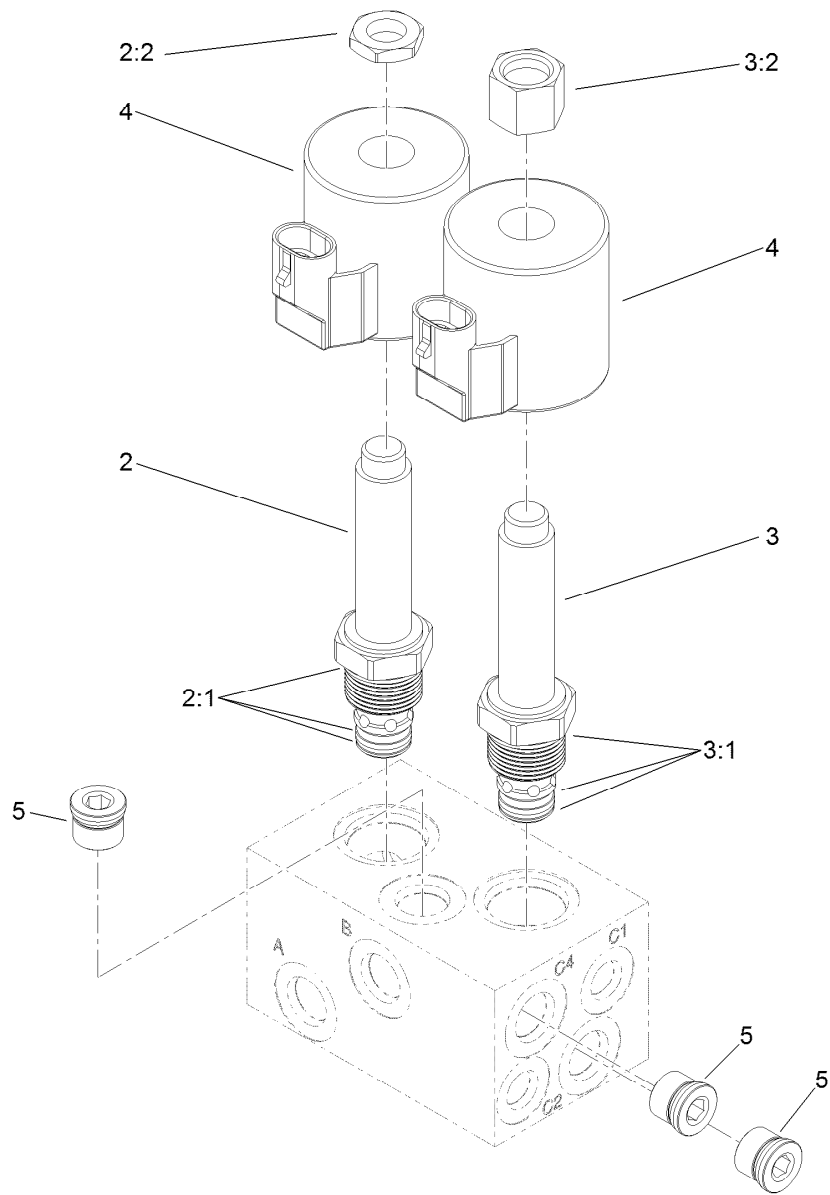


HDX-AUTO

# Remote Hydraulics Manifold Assembly No. 110-2626 (continued)

| <i>Ref.</i> | <i>Part Number</i> | <i>Qty.</i> | <i>Description</i>    | <i>Ref.</i> | <i>Part Number</i> | <i>Qty.</i> | <i>Description</i>     |
|-------------|--------------------|-------------|-----------------------|-------------|--------------------|-------------|------------------------|
| 1           | 110-2625           | 1           | Manifold ASM          | 13          | 110-2623           | 1           | Harness-Wire, Manifold |
| 2           | 110-2622           | 1           | Bracket-Mount         | 14          | 110-2627           | 1           | Decal-Qd               |
| 3           | 340-132            | 2           | Fitting-Elbow, 90 DEG | 15          | 110-2628           | 1           | Decal-Fuse             |
| 3:1         | 237-78             | 1           | O-Ring                | 16          | 110-2629           | 1           | Decal-Switch           |
| 3:2         | 237-21             | 1           | O-Ring                | 19          | 100-1270           | 1           | Switch-Proximity       |
| 4           | 340-87             | 1           | Fitting-Elbow, 45 DEG | 20          | 3296-12            | 1           | Nut-Lock, NI           |
| 4:1         | 237-22             | 1           | O-Ring                | 21          | 100-4872           | 1           | Plate-Switch, Neutral  |
| 4:2         | 237-42             | 1           | O-Ring                | 22          | 3229-34            | 1           | Screw-CARR             |
| 5           | 99-5644            | 2           | Fitting-SAE           | 23          | 105-0023           | 1           | Switch-Proximity       |
| 5:1         | 237-42             | 2           | O-Ring                | 24          | 106-7977           | 2           | Hose-HYD               |
| 6           | 105-4232           | 1           | Switch                | 25          | 340-77             | 1           | Fitting-Elbow, 90 DEG  |
| 7           | 92-2641            | 1           | Block-Fuse            | 25:1        | 237-22             | 1           | O-Ring                 |
| 8           | 32105-13           | 2           | Screw-HWH             | 25:2        | 237-42             | 1           | O-Ring                 |
| 9           | 3296-2             | 2           | Nut-Lock, NI          | 26          | 127-8870-03        | 1           | Bracket-Mount          |
| 10          | 322-3              | 2           | Screw-HH              | 99          | 237-22             | 1           | O-Ring ●               |
| 11          | 3253-4             | 2           | Washer-Lock           | 99          | 237-42             | 1           | O-Ring ●               |
| 12          | 218-578            | 1           | Fuse-Blade, 10 Amp    |             |                    |             |                        |

● Not illustrated



## Manifold Assembly No. 110-2625

| Ref. | Part Number | Qty. | Description    |
|------|-------------|------|----------------|
| 2    | 110-2632    | 1    | Valve-Solenoid |
| 2:1  | 110-2633    | 1    | Seal Kit       |
| 2:2  | 110-2635    | 1    | Nut-Coil       |
| 3    | 110-2631    | 1    | Valve-Solenoid |
| 3:1  | 110-2633    | 1    | Seal Kit       |
| 3:2  | 110-2634    | 1    | Nut-Coil       |
| 4    | 110-2630    | 2    | Coil-12Vdc     |
| 5    | 106-1026    | 3    | Plug-HYD       |

**Notes:**



**Count on it.**