



## 1028LE Power Max Snowthrower

Model No. 38642 - 240000001 and up.

### Parts Catalog

---

#### Ordering Replacement Parts

To order replacement parts, please supply: the part number, the quantity, and the description of each part desired.

#### Understanding Reference Numbers

Each identified part in an illustration has a reference number. The reference number for a part also appears in the parts list, along with other information about the part.

This catalog uses two special reference number formats, one to indicate parts in a service assembly and another to indicate the quantity of a given part in an illustration.

#### Service Assembly Reference Numbers

Parts in service assemblies have reference numbers in the form **a:b**. The **a** represents the reference number of the entire service assembly and the **b** represents a sequential number unique to each part within the service assembly.

For example, a wheel assembly might be identified by reference number 6, the tire by **6:1**, the valve by **6:2**, and the wheel by **6:3**. When you order the assembly identified by reference number 6, you receive all parts identified by reference numbers 6:1, 6:2, and 6:3. However, you may also order any part individually. Reference numbers of this type appear in illustrations and in part lists.

#### Reference Numbers Indicating Quantity

In an illustration, if a reference number indicates more than one part, the reference number has the form **nX y**. The **n** represents the quantity of the part, the **X** is the multiplication symbol, and the **y** represents the reference number.

For example, in an illustration, the reference number **2X 37** means that two of the parts identified by reference number 37 are indicated.

# Part Description Abbreviations

Part descriptions in this catalog may include the following abbreviations.

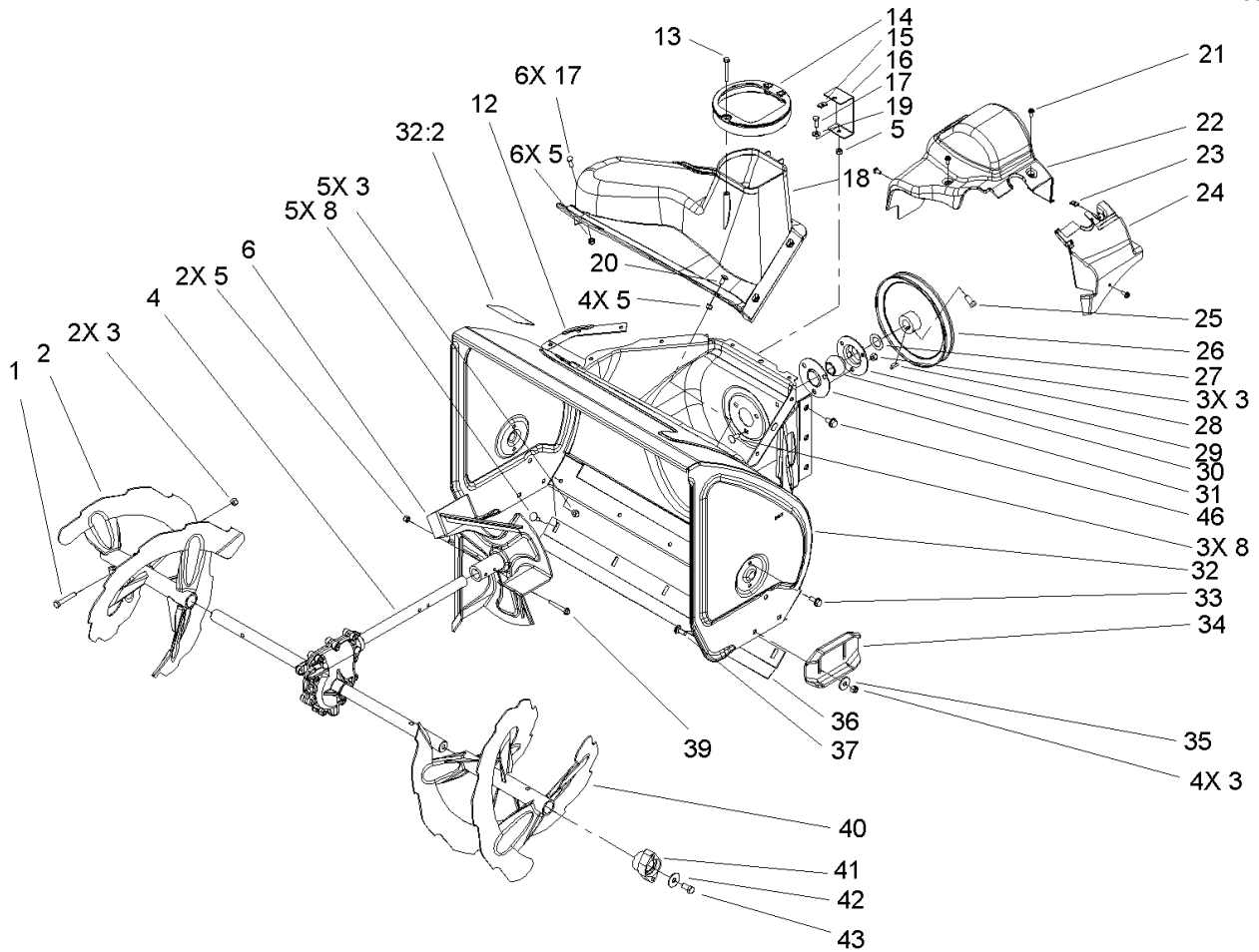
AR. ....	as required	HYD. ....	hydraulic
ASM. ....	assembly	INC. ....	incorporated
CARR. ....	carriage	LH. ....	left hand
DEG. ....	degrees	NI. ....	nylon insert
FH. ....	flat head	PPH. ....	phillips pan head
GA. ....	gauge	PTH. ....	phillips truss head
HF. ....	hex flange	PTO. ....	power take off
HH. ....	hex head	RH. ....	right hand
HHF. ....	hex head flange	SFH. ....	slotted fillister head
HHFTF. ....	hex head flange thread forming	SHH. ....	slotted hex head
HJ. ....	hex jam	SHWH. ....	slotted hex washer head
HLH. ....	hex lag head	SPH. ....	slotted pan head
HOC. ....	height-of-cut	SQH. ....	square head
HS. ....	hex	SRH. ....	slotted round head
HSBH. ....	hex socket button head	STD. ....	standard
HSFH. ....	hex socket flat head	TAP. ....	self tapping
HSH. ....	hex socket head	TTH. ....	torx truss head
HWH. ....	hex washer head	WH. ....	wing head
HWHTF. ....	hex washer head thread forming		

## Footnotes

- ❶ Not illustrated
- ❷ Not serviced separately
- ❸ Obtain parts from your local Tecumseh dealer

## Contents

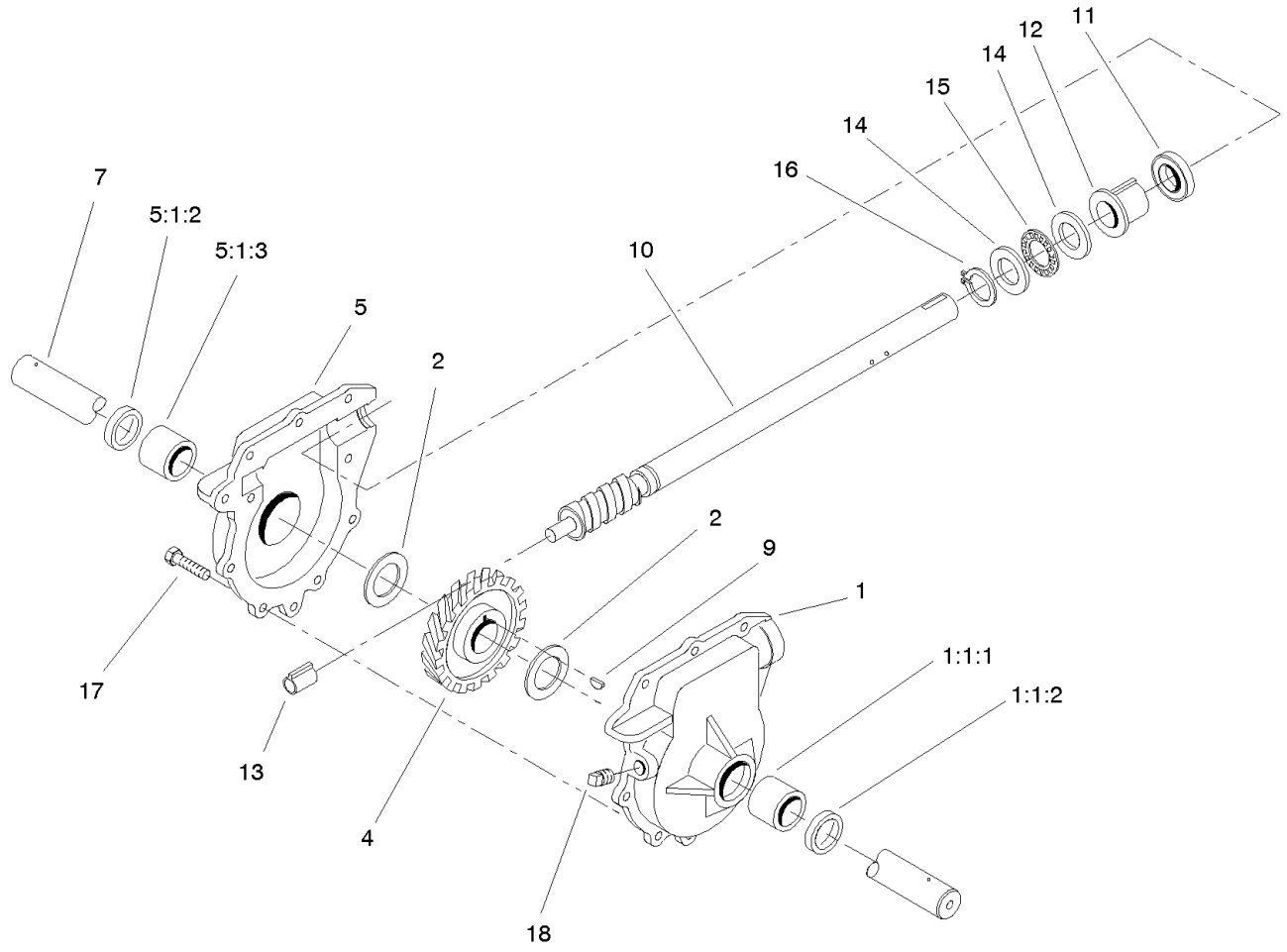
Description	Page	Description	Page
Auger and Housing Assembly	..... 3	Engine Assembly Tecumseh Model HMSK100-159494Y	..... 14
Gearcase Assembly Part No. 106-7254	..... 4	Engine Assembly (continued) Tecumseh Model HMSK100-159494Y	..... 16
Chute Assembly	..... 5	Recoil Starter Part No. 590749à	..... 18
Chain Drive Assembly	..... 6	Electric Starter (110 Volt) Part No. 33329Eà	..... 19
Frame Assembly	..... 7	Rewind Starter Part No. 590733à	..... 20
Control Assembly	..... 9		
Handle and Control Assembly	..... 10		
Lever and Chute Control Assembly	..... 11		
Engine Assembly	..... 12		
Carburetor Part No. 640054 Tecumseh Model HMSK100-159494Y	..... 13		



## Auger and Housing Assembly

Ref	Part No.	Qty.	Description
1	322-10	2	Screw-HH
2	106-7291-03	1	Auger, RH 28in
3	3296-29	14	Nut-Lock, NI
4	106-7254	1	28in Auger Gearcase ASM
5	3296-42	13	Nut-Lock, NI
6	106-4576-03	1	Impeller ASM
8	3230-23	8	Screw-CARR
12	107-1017-03	1	Seal-Cover Flange
13	107-3003	1	Screw-Plastite
14	107-3006	1	Guide-Chute
15	107-1013	1	Nut-Speed, U-Type
16	107-1014-03	1	Bracket-Cover, Clip Nut
17	321-4	7	Screw-HH
18	105-9979	1	Cover
19	3256-22	1	Washer-Flat
20	3229-1	4	Screw-CARR
21	32144-112	4	Screw-HWHTF
22	107-1001	1	Cover-Belt
23	701493	1	Nut-Speed
24	107-1016	1	Cover-Belt Extension
25	3242-4	2	Screw-Set, SQH
26	62-1300	1	Pulley-Impeller
27	252-80	1	Washer-Thrust
28	3257-23	1	Key-Woodruff

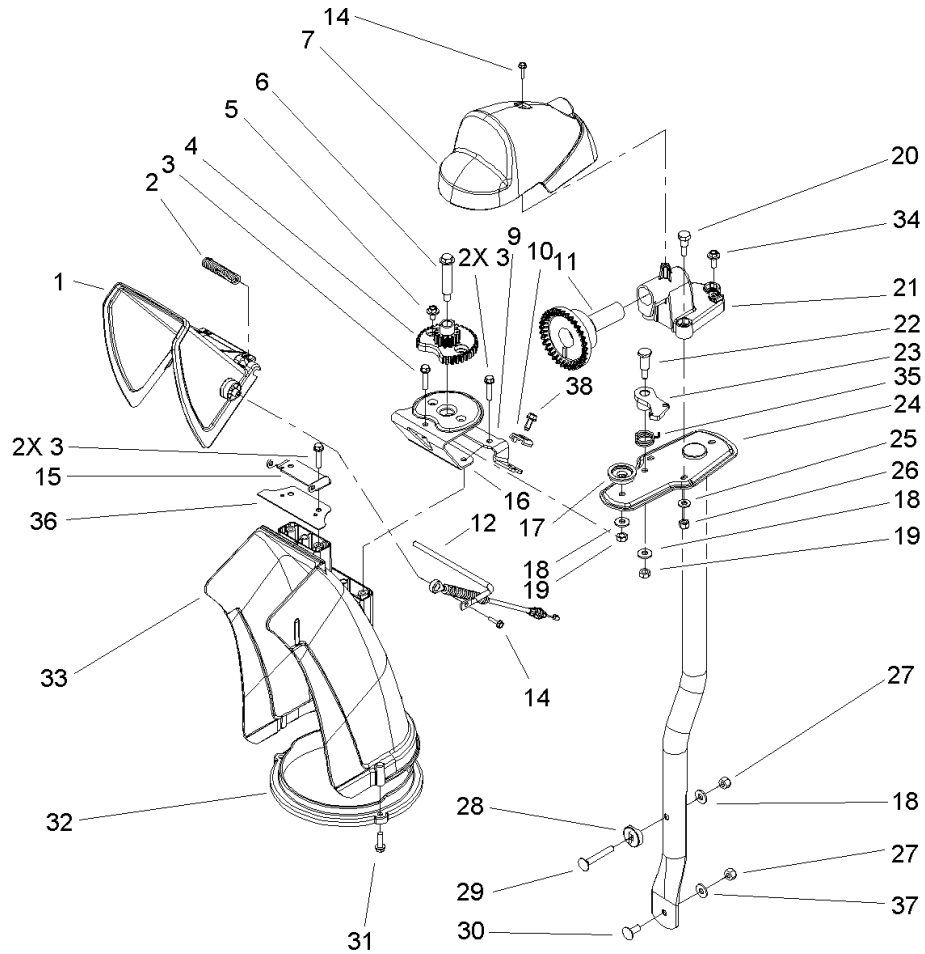
Ref	Part No.	Qty.	Description
29	26-6110	1	Flange-Cup, Bearing
30	63-3450	1	Bearing-Ball
31	26-6120	1	Flange-Cup, Bearing
32	107-3823	1	Housing-Auger, 28" ASM
32:2	53-7670	1	Decal-Warning, Auger
33	32144-70	4	Screw-HH
34	106-4588-01	2	Skid
35	52-2861	4	Washer
36	106-4573-01	1	Scraper-Fixed, 28in
37	3230-16	4	Screw-CARR
39	321-44	2	Screw-HHF
40	106-7301-03	1	28in LH Auger ASM
41	106-4570	2	Auger-Bearing
42	3-0750	2	Washer
43	323-4	2	Screw-HH
46	32144-14	6	Screw-HWH



## Gearcase Assembly Part No. 106-7254

Ref	Part No.	Qty.	Description
1	74-1570	1	LH Auger Gearcase ASM
② 1:1		1	LH Auger Gearcase ASM
1:1:1	256-237	1	Bushing
1:1:2	7-0045	1	Seal-Oil
2	252-71	2	Washer-Thrust
4	62-0120	1	Gear-Helical
5	74-1580	1	RH Auger Gearcase ASM
② 5:1		1	RH Auger Gearcase ASM
5:1:2	7-0045	1	Seal-Oil
5:1:3	256-237	1	Bushing
7	106-4421	1	Shaft-Auger, 28in
9	3257-10	1	Key-Woodruff
10	66-7811	1	Shaft-Impeller
11	253-149	1	Seal-Oil
12	37-6560	1	Bushing-Input
13	62-1150	1	Bushing-Worm
14	252-78	2	Bearing-Thrust
15	252-76	1	Bearing-Thrust
16	32151-33	1	Ring-Retaining, Ext
17	32144-110	9	Screw-HWH
18	281-1	1	Plug-Pipe, SQH

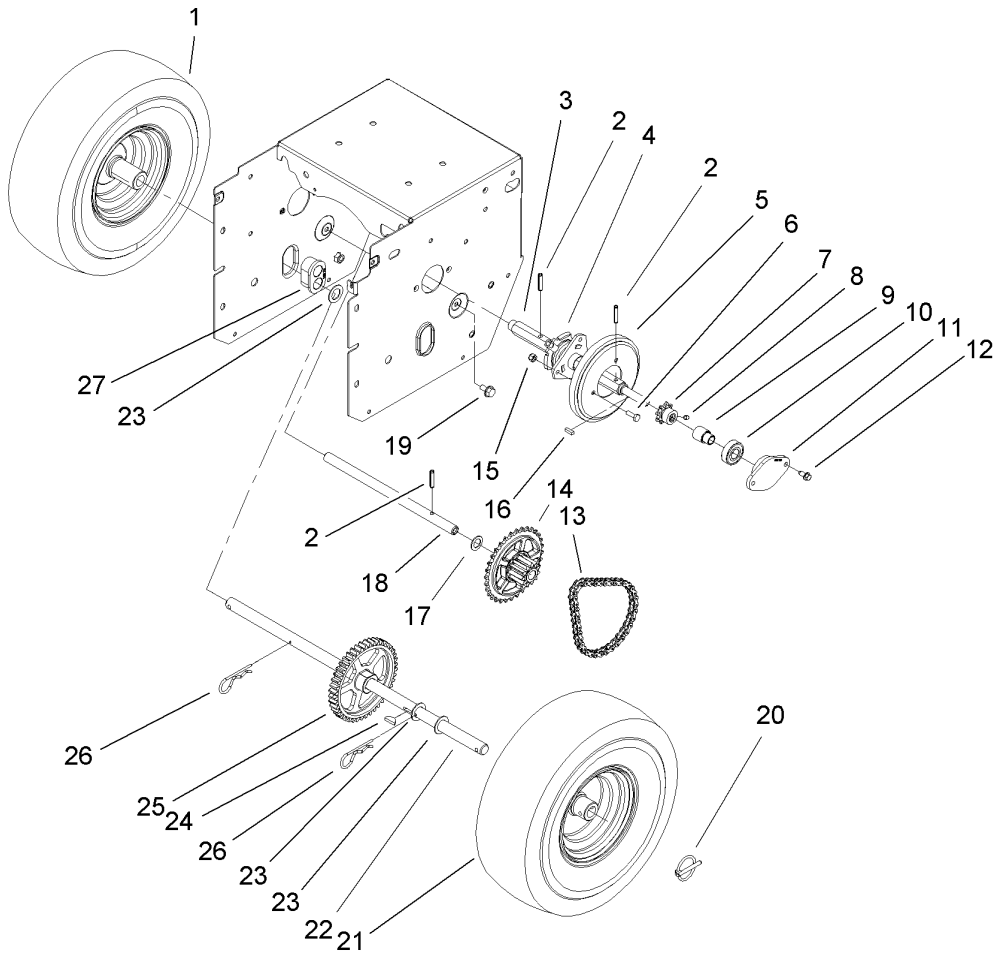
--	--	--	--



## Chute Assembly

Ref	Part No.	Qty.	Description
1	106-4587	1	Deflector-Chute
2	106-4594	1	Spring-Torsion
3	46-8092	5	Screw-Plastite
4	106-4472	1	Gear-Chute
5	46-6810	2	Screw And Washer ASM
6	100-9880	1	Bolt-Shoulder
7	106-4585	1	Cover-Gear, Chute
9	106-7296	1	Bracket-Cable, Clamp
10	106-7297	1	Clamp-Cable
11	106-4471	1	Gear-Face
12	107-1021	1	Rod-Deflector
14	98-1375	2	Screw-HWH
15	106-7266	1	Bracket-Deflector
16	106-4582-03	1	Bracket-Support, Chute
17	106-4422	1	Spacer-Chute
18	3256-2	3	Washer-Flat
19	3296-47	2	Nut-Lock, NI
20	106-7276	3	Screw-Shoulder
21	106-7257	1	Mount-Gear, Face
22	63-2650	1	Screw-Shoulder
23	106-4476	1	Latch-Chute
24	106-7253-03	1	Tube-Support
25	3256-22	3	Washer-Flat
26	3296-42	3	Nut-Lock, NI

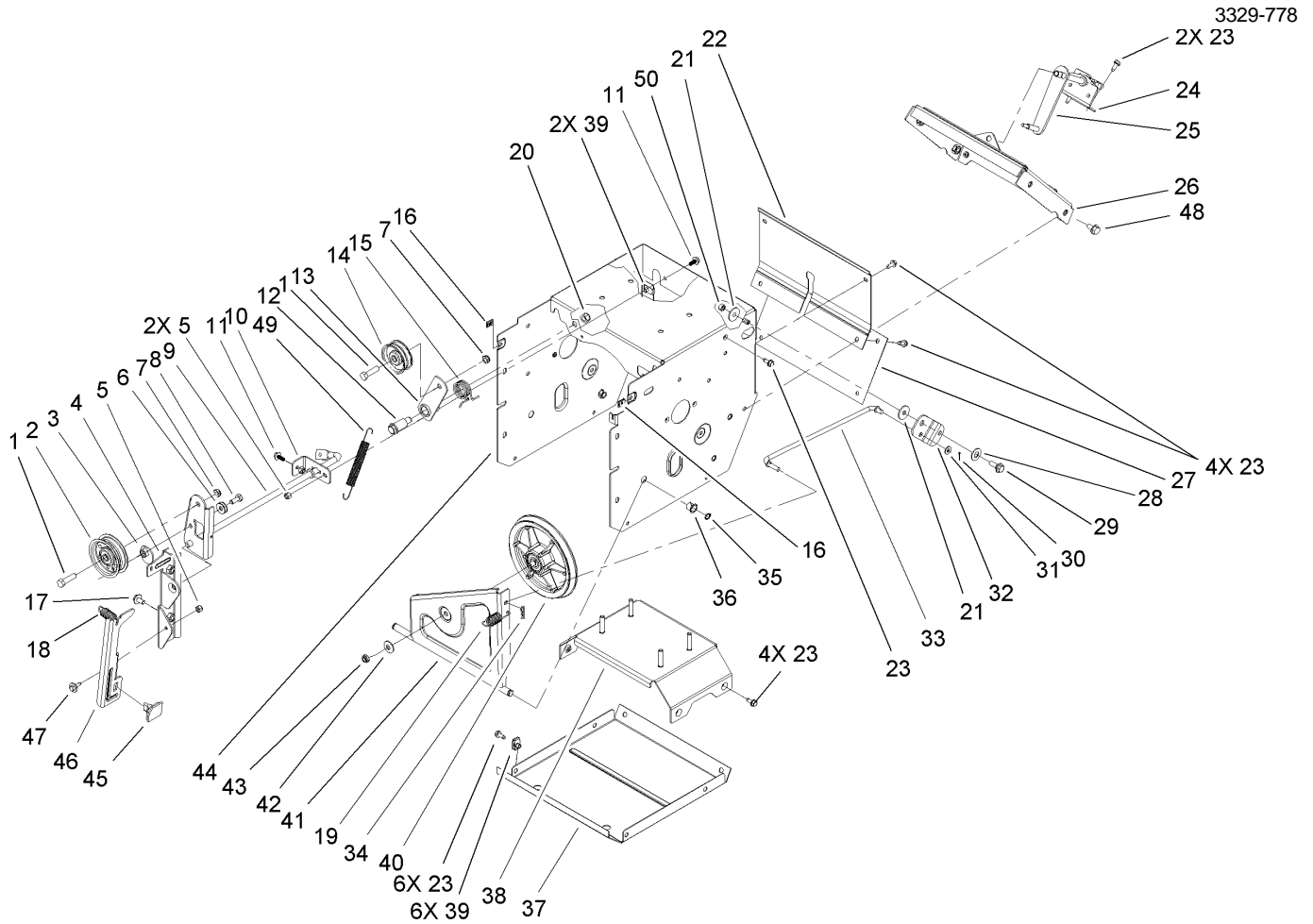
Ref	Part No.	Qty.	Description
27	3296-29	2	Nut-Lock, NI
28	106-7260	1	Washer-Curved
29	3230-5	1	Screw-CARR
30	3230-23	1	Screw-CARR
31	46-8091	3	Screw-HWH
32	105-9991	1	Ring-Chute
33	106-4440	1	Chute-Discharge
34	46-6811	1	Screw-HWH
35	106-4475	1	Spring-Torsion
36	107-1019	1	Seal-Chute
37	3290-456	1	Washer-Belleville
38	32144-10	1	Screw-HWH



## Chain Drive Assembly

Ref	Part No.	Qty.	Description
1	107-3042	1	Tire
1	107-3043	1	Rim-Tire
2	32121-9	3	Pin-Spring
3	106-4593	1	Shaft-Hex, Chain
4	106-4434	1	Trunion-Hex
5	106-4480	1	Wheel-Friction
6	321-4	3	Screw-HH
7	106-7317	1	Sprocket-8 Tooth
8	3245-32	2	Screw-HS
9	106-7250	1	Spacer-Bearing, Sleeve
10	100-1048	2	Bearing-Ball
11	106-7308	2	Retainer-Bearing
12	32144-10	4	Screw-HWH
13	106-7293	1	Chain-Roller
13	2710-6	1	Link-Connecting
14	106-7261	1	Sprocket ASM
15	3296-42	3	Nut-Lock, NI
16	94-8850	1	Key-Square
17	107-3041	1	Washer-Flat
18	106-4592	1	Shaft-Intermediate
19	32144-14	2	Screw-HWH
20	107-3039	2	Klik Pin ASM
21	107-3042	1	Tire
21	107-3043	1	Rim-Tire

Ref	Part No.	Qty.	Description
22	106-4449	1	Shaft-Axle
23	3-8664	3	Washer-Thrust
24	3257-7	1	Key-Woodruff
25	106-4572	1	Gear-Axle, 44 Tooth
26	3290-343	2	Pin-Hair
27	106-4558	2	Bearing-Axle

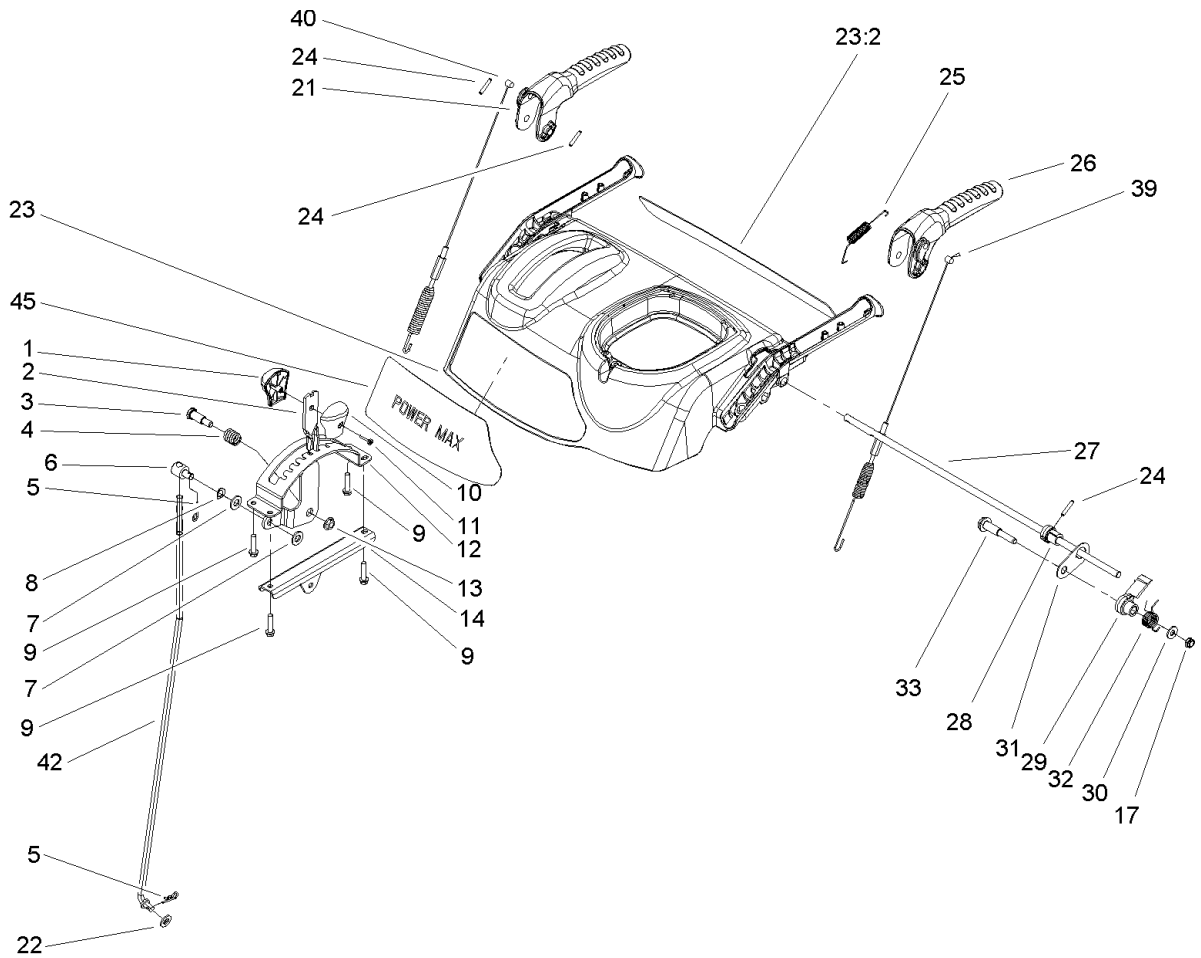


## Frame Assembly

Ref	Part No.	Qty.	Description
1	323-8	2	Screw-HH
2	92-7104	1	Pulley-Idler
3	107-1047	1	Nut ASM
4	107-1039	1	Bracket-Idler, Impeller
5	3296-42	3	Nut-Lock, NI
6	3290-456	1	Washer-Belleville
7	3296-59	2	Nut-Lock, NI
8	322-3	1	Screw-HH
9	106-7339-03	1	Auger Clutch ASM
10	106-7341	1	Bracket-Clutch Rear
11	99-6810	2	Screw-HH
12	107-1022	1	Bolt-Shoulder
13	106-7312	1	Arm-Idler, Traction
14	3-4244	1	Pulley-Idler
15	93-4816	1	Spring-Torsion, RH
16	107-1013	2	Nut-Speed, U-Type
17	3234-7	2	Screw-HHF
18	107-1045	1	Spring-Extension
19	107-1003	1	Spring-Extension
20	3296-76	1	Nut-Lock, NI
21	5-4460	2	Washer-Pivot
22	106-4556-01	1	Cover-Upper
23	32144-10	17	Screw-HWH
24	106-7325	1	Bracket-Shift Rod

Ref	Part No.	Qty.	Description
25	106-7268	1	Lever-Control, Traction
26	106-7342-01	1	Shift Plate ASM
27	106-7345-01	1	Cover-Lower
28	25-5640	1	Washer
29	27-0410	1	Screw-Shoulder
30	3272-4	1	Pin-Cotter
31	3256-23	1	Washer-Flat
32	107-1011	1	Bellcrank-Drive
33	106-4467	1	Link-Control, Speed
34	3290-307	1	Pin-Hair
35	32151-61	2	Ring-Retaining
36	256-257	2	Bushing-Nyliner
37	106-7330-01	1	Pan-Bottom
38	106-7315	1	Brace Frame ASM
39	107069	8	Clip
40	106-4500	1	Pulley-Traction
41	106-7274	1	Pulley Pivot ASM
42	3290-340	1	Washer-Belleville
43	3296-5	1	Nut-Lock, NI
44	106-4495-01	1	Frame-Traction
45	66-8060	1	Pad-Brake
46	107-1000	1	Arm-Brake
47	92-9698	1	Screw-Shoulder
48	32144-14	4	Screw-HWH

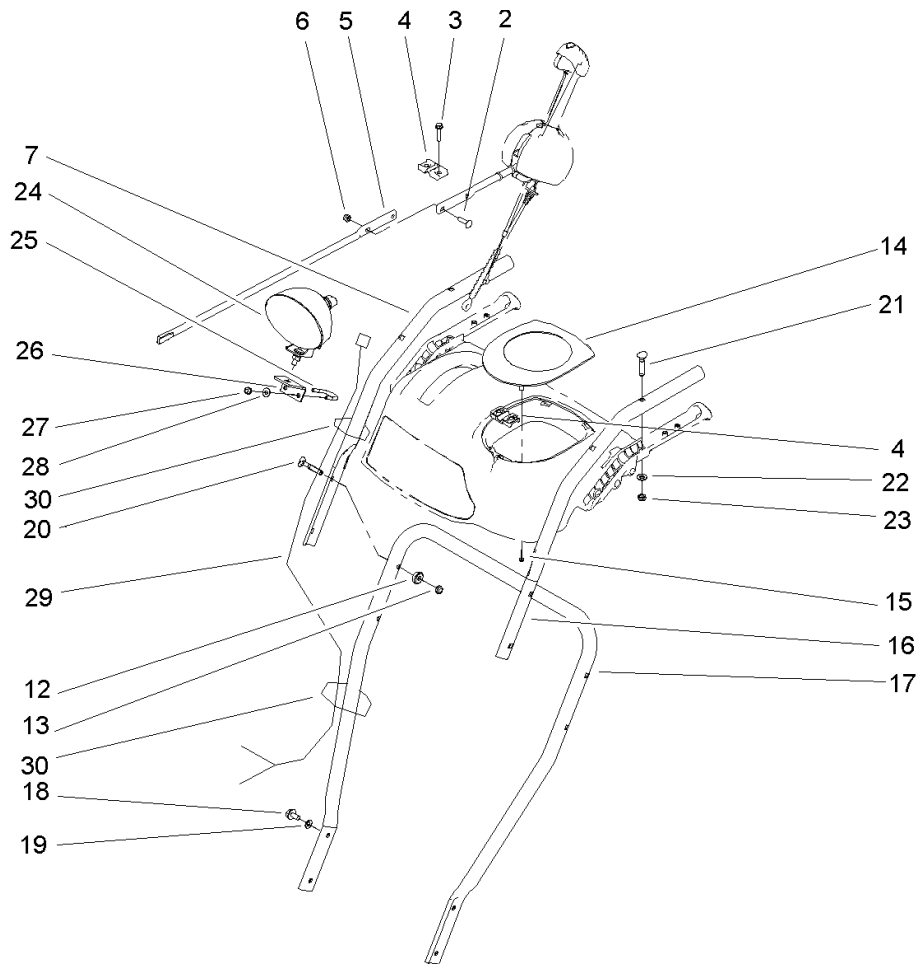




## Control Assembly

Ref	Part No.	Qty.	Description
1	106-4423	1	Knob-Shift, RH
2	106-7278-03	1	Selector-Speed
3	63-2650	1	Screw-Shoulder
4	107-3017	1	Spring-Compression
5	3290-307	2	Pin-Hair
6	101161	1	Trunion
7	3256-24	2	Washer-Flat
8	612586	1	Washer-Spring
9	46-8092	4	Screw-Plastite
10	105-9999	1	Knob-Shift, LH
11	94-4496	1	Screw-PPH
12	106-7277-03	1	Guide-Selector, Speed
13	32128-13	1	Nut-HF
14	106-7279-03	1	Mount-Selector, Speed
17	3296-72	1	Nut-Lock, NI
21	106-4413	1	Lever-Auger
22	3256-38	1	Washer-Flat
23	107-3825	1	Control Panel ASM
23:2	106-4521	1	Decal-Control Panel
24	32121-125	3	Pin-Spring
25	107-3001	1	Spring-Tension
26	106-4410	1	Lever-Traction
27	105-9996	1	Rod-Lockout
28	107-1043	1	Cam-Lockout

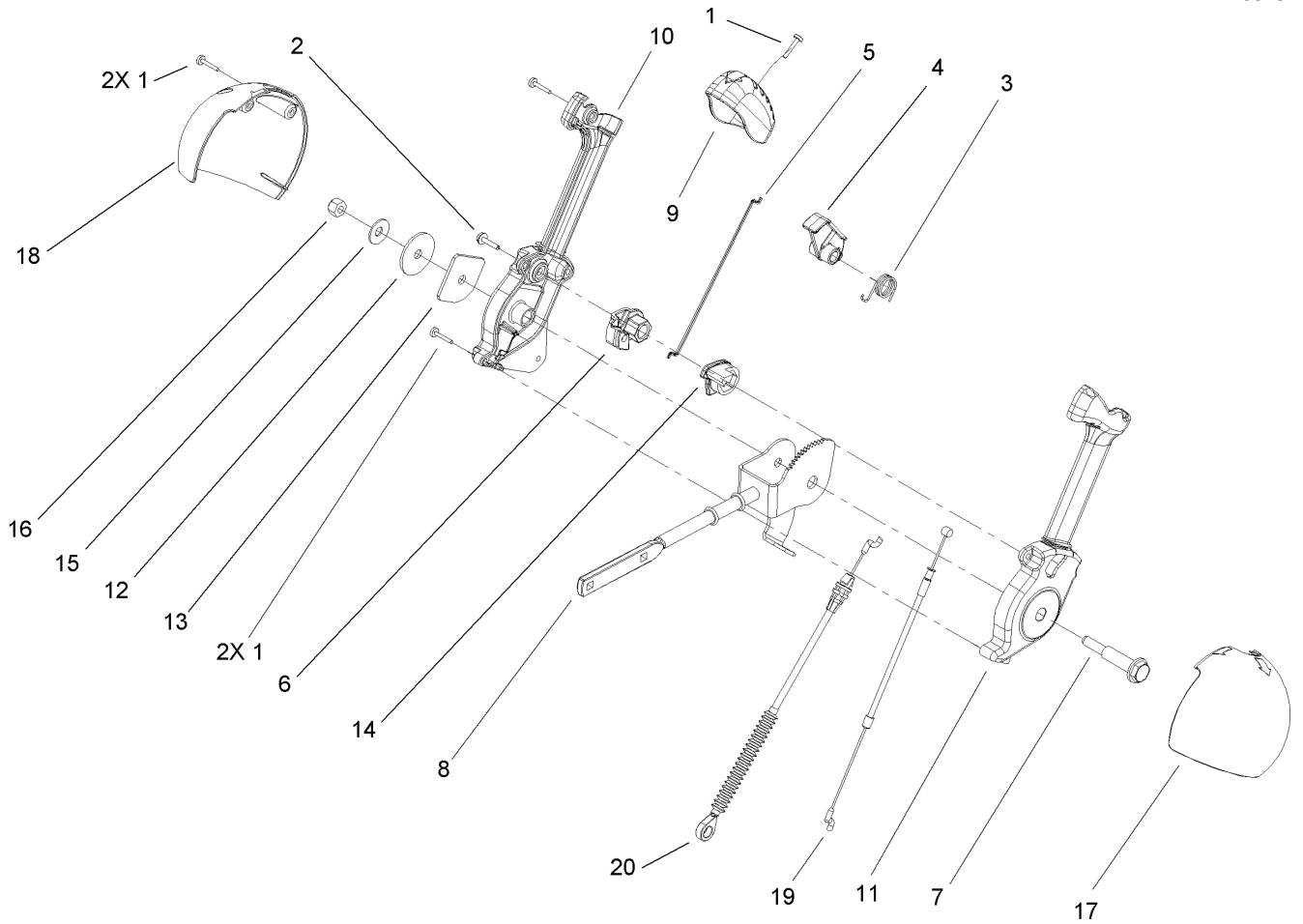
Ref	Part No.	Qty.	Description
29	107-1044	1	Latch-Lockout
30	98-3499	1	Washer-Flat
31	107-3000	1	Link-Lockout
32	105-9998	1	Spring-Torsion
33	106-4412	1	Screw-Shoulder
39	106-4563	1	Cable-Traction
40	106-4599	1	Cable-Auger
42	107-1005	1	Rod-Shift
45	107-3032	1	Decal-Control Panel, Tss



## Handle and Control Assembly

Ref	Part No.	Qty.	Description
2	3229-30	2	Screw-CARR
3	46-8092	2	Screw-Plastite
4	105-9987	2	Support-Rod
5	106-7283	1	Rod-Chute, Front
6	3296-73	2	Nut-Lock, NI
7	105-9994-03	1	Handle-Upper, RH
12	75-9130	4	Washer-Curved
13	3296-72	4	Nut-Lock, NI
14	106-4586	1	Cover-Panel, Control
15	94-4496	2	Screw-PPH
16	105-9993-03	1	Handle-Upper, LH
17	105-9981-03	1	Handle-Lower
18	32144-14	4	Screw-HWH
19	3290-475	4	Washer-Belleville
20	92-2260	4	Screw-Handle
21	107-3018	4	Screw-Handle
22	3256-70	4	Washer-Flat
23	3296-72	4	Nut-Lock, NI
24	106-4510	1	Headlamp-ASM
25	107-3024	1	Clamp-Light
26	107-1020-03	1	Bracket-Light
27	3296-73	2	Nut-Lock, NI
28	3256-1	2	Washer-Flat
29	106-4511	1	Harness-Wire

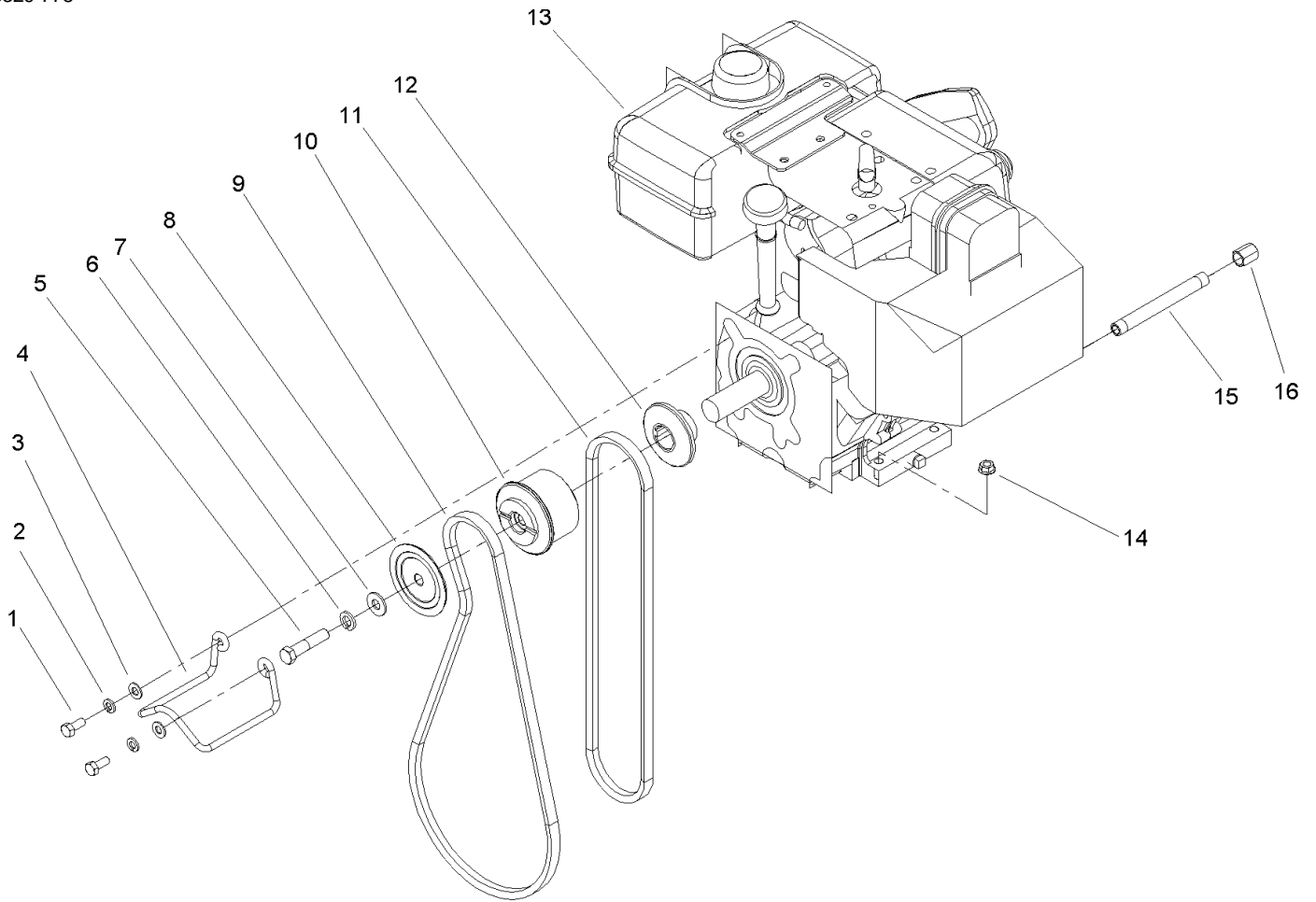
Ref	Part No.	Qty.	Description
30	614249	2	Strap-Tie



## Lever and Chute Control Assembly

Ref	Part No.	Qty.	Description
1	94-4496	5	Screw-PPH
2	98-1375	1	Screw-HWH
3	105-9982	1	Spring-Torsion
4	105-9984	1	Trigger-Latch
5	105-9985	1	Link-Latch
6	105-9988	1	Lever-Cable, Deflector
7	105-9995	1	Screw-Shoulder
8	106-4479	1	Rod-Control, Chute
9	106-7280	1	Cap-Lever
10	106-7281	1	Lever-Chute Control, RH
11	106-7282	1	Lever-Chute Control, LH
12	107-3002	1	Washer-Nylon
13	106-7295	1	Plate-Friction
14	106-7310	1	Pawl-Latch
15	3290-456	1	Washer-Belleville
16	3296-29	1	Nut-Lock, NI
17	105-9986	1	Cover-Chute Lever, LH
18	106-7292	1	Cover-Chute Lever, RH
19	105-9989	1	Cable-Chute Release
20	105-9990	1	Cable-Control, Deflector

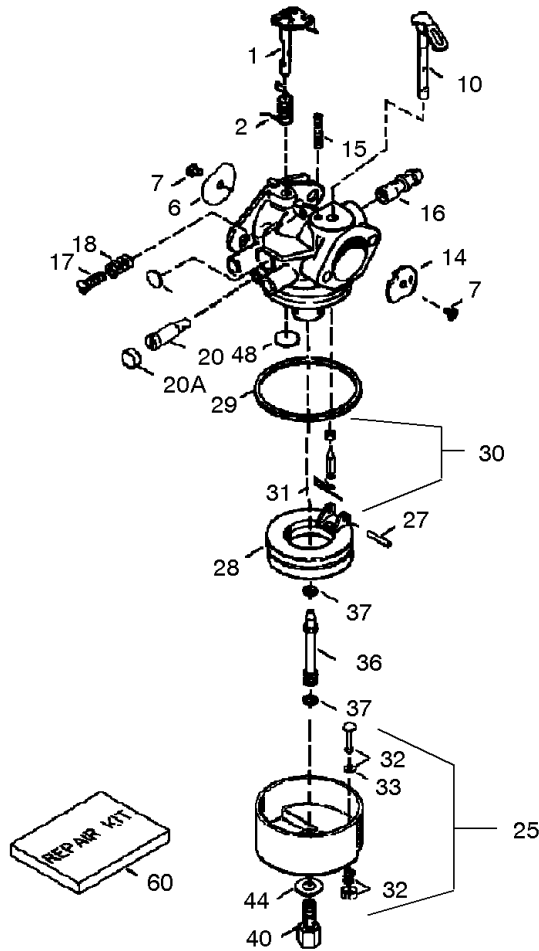
--	--	--	--



## Engine Assembly

Ref	Part No.	Qty.	Description
1	3210-3	2	Screw-HH
2	3253-4	2	Washer-Lock
3	3256-23	2	Washer-Flat
4	107-3835	1	Guide-Belt
5	3212-8	1	Screw-HH
6	3253-6	1	Washer-Lock
7	3256-4	1	Washer-Flat
8	62-0940	1	Sheave-Half, Impeller
9	106-4498	1	Belt-V
10	106-7333	1	Pulley-Engine, Center
11	94-8812	1	V-Belt, Traction
12	106-7334	1	Sheave-Half, Traction
13		1	Engine 10 Hp Tec Es(110v) Tecumseh Model No. Hmsk100-159494y
14	32128-20	4	Nut-HF
15	289-34	1	Nipple-Pipe
16	288-2	1	Cap-Pipe
20	99-9300	1	Cord-Extension

--	--	--	--



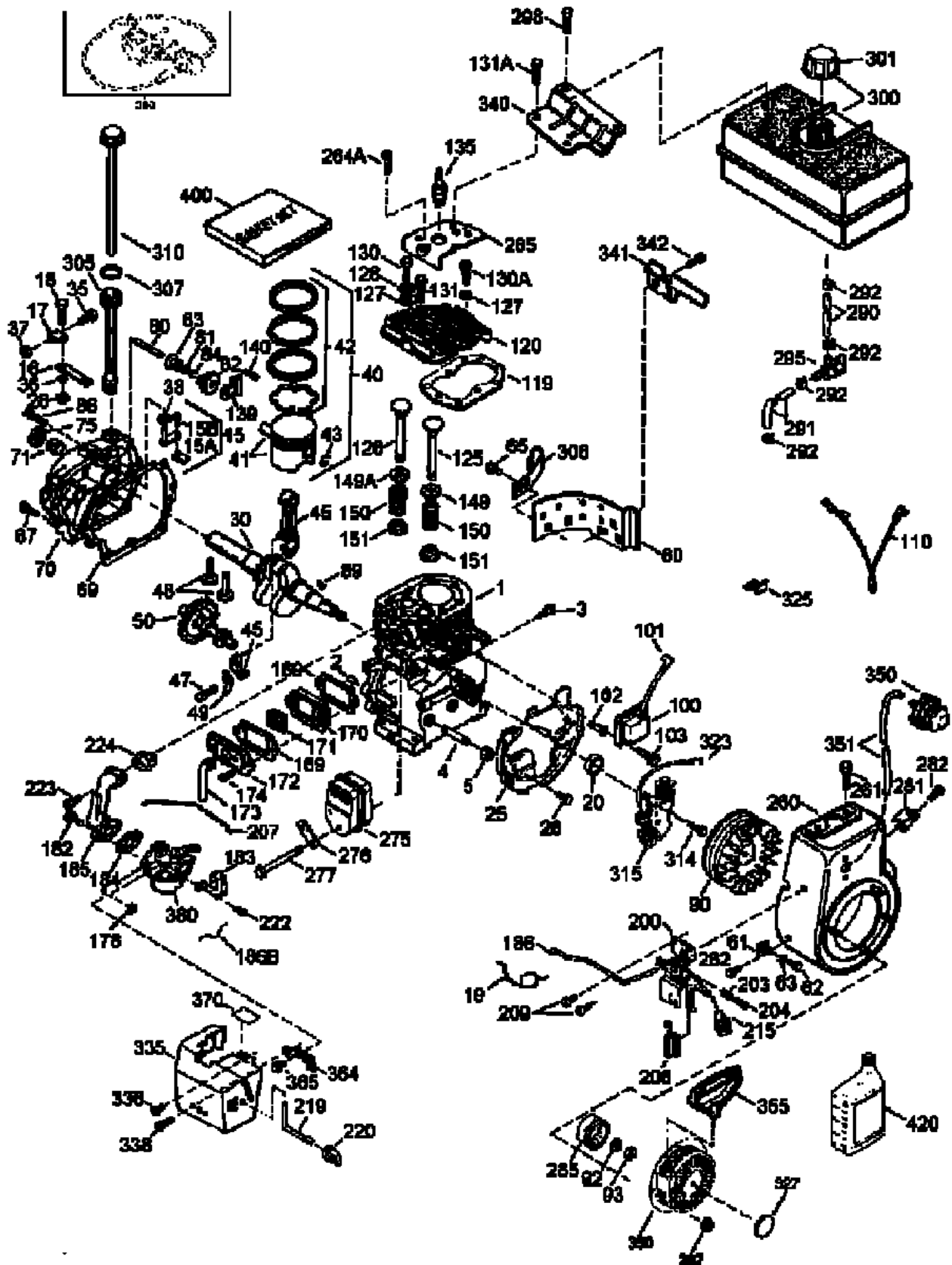
## Carburetor Part No. 640054 Tecumseh Model HMSK100-159494Y

Ref	Part No.	Qty.	Description
1	631776A	1	Throttle Shaft & Lever ASM
2	631970	1	Throttle Return Spring
6	631778	1	Throttle Shutter
7	650506	2	Screw-Shutter
10	632112	1	Choke Shaft & Lever ASM
14	632174	1	Choke Shutter
15	630735	1	Choke Positioning Spring
16	632164	1	Fuel Fitting
17	650417	1	Idle Speed Screw
18	630766	1	Spring-Tension
20	640016	1	Idle Restrictor Screw
20A	640053	1	Idle Restrictor Screw Cap
25	631951	1	Float Bowl ASM (Incl. 32 & 33)
27	631024	1	Shaft-Float
28	632765	1	Float
29	631028	1	O Ring-Bowl, Float
30	631021	1	Inlet Needle, Seat, Clip (Incl. 31)
31	631022	1	Clip-Spring
32	27136A	1	Bowl Drain ASM
33	27554	1	Drain Plunger Gasket
36	640005	1	Main Nozzle Tube
37	632547	2	O Ring-Tube, Main Nozzle
40	640012	1	High Speed Bowl Nut
44	27110A	1	Washer-Nut, Bowl

Ref	Part No.	Qty.	Description
47	630748	1	Plug-Welch, Idle Mixture Well
48	631027	1	Plug-Welch, Vent
60	632760	1	Repair Kit

# Engine Assembly

## Tecumseh Model HMSK100-159494Y

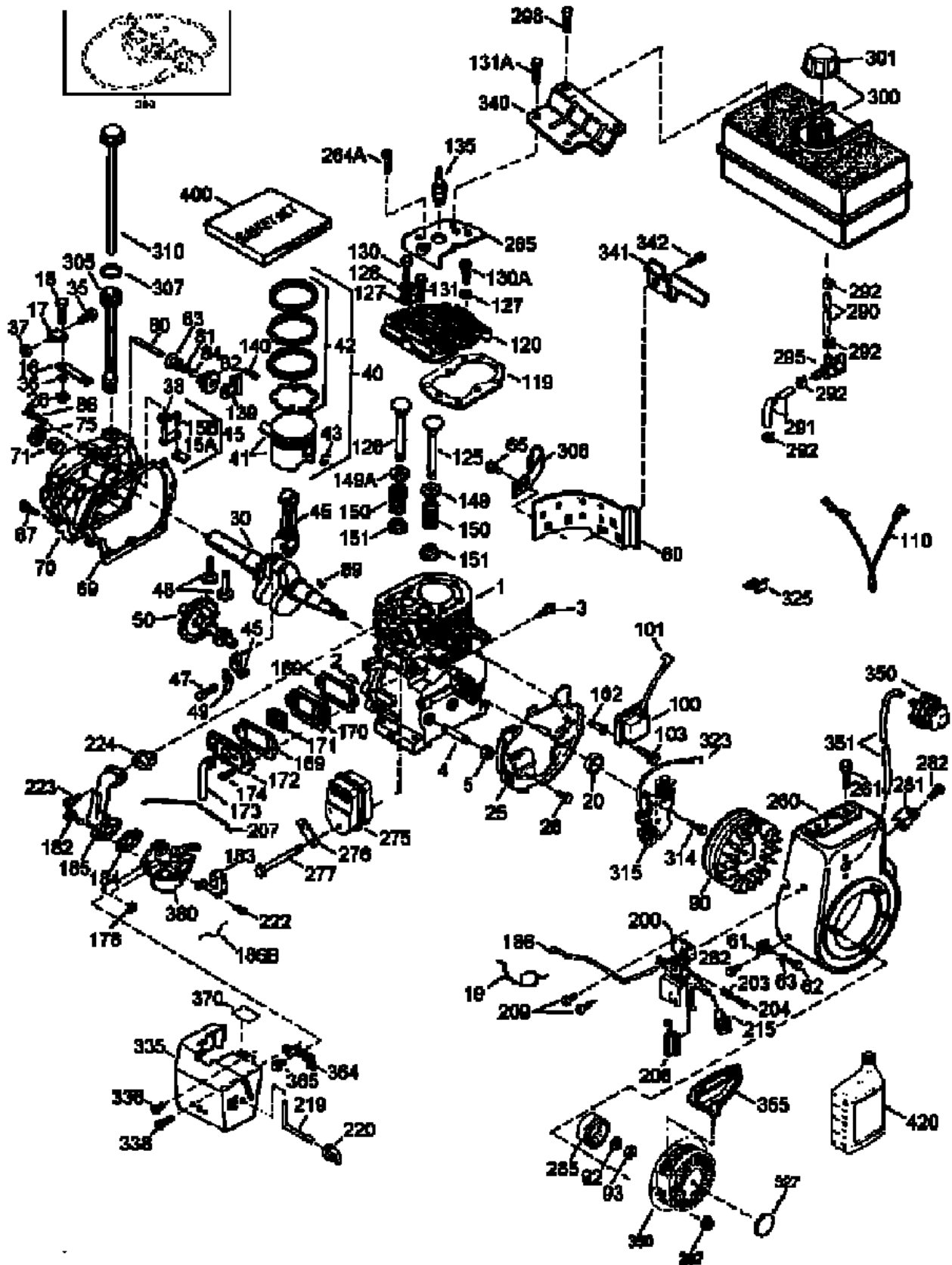


# Engine Assembly

## Tecumseh Model HMSK100-159494Y

Ref	Part No.	Qty.	Description	Ref	Part No.	Qty.	Description
①	35371	1	Cylinder (Incl. 2, 20, & 72)	⑨3	650881	1	Nut-Flywheel
②	27652	2	Pin-Dowel	⑩00	35135A	1	Solid State Ignition ASM
③	650820	2	Screw	⑩02	651024	2	Stud-Mounting, Solid State
⑭	28277	1	Washer	⑩03	651007	2	Screw, T-15, 10-24 X 15/16"
⑤	28558	1	Washer	⑩10	35187	1	Wire-Ground
⑮	30699C	1	Governor Rod (Incl. 15a & 15b)	⑩	37047	1	Wire-Ground
⑥	30700	1	Yoke-Governor	⑩119	36451	1	Gasket-Cylinder Head
⑦	650494	1	Screw, 6-40 X 5/16"	⑩120	36449	1	Cylinder Head (Incl. 151)
⑮	33454A	1	Governor Lever (Incl. 212a)	⑩125	27878A	1	Exhaust Valve (Std.) (Incl. 151)
⑰	29916	1	Clamp-Lever, Governor	⑩125	27880A	1	Exhaust Valve (Incl. 151) (1/32 Os)
⑱	651028	1	Screw, T-15, 8-32 X 3/8"	⑩126	34035	1	Valve-Intake (Std.)
⑲	34663	1	Spring-Throttle	⑩127	650691	5	Washer
⑳	35319	1	Seal-Oil	⑩128	650690	3	Washer-Belleville
㉔	650561	2	Screw, 1/4-20 X 5/8"	⑩130	6021A	4	Screw, 5/16-18 X 1-1/2"
㉔	30322	1	Nut-Lock, 8-32	⑩130	650694A	3	Screw
㉓	35571A	1	Crankshaft	⑩	650727	2	Screw, 5/16-18 X 1-3/4"
㉕	29826	1	Screw, 10-32 X 3/4"	⑩	651055	2	Screw, 5/16-18 X 39/64"
㉖	29918	1	Washer-Lock	⑩135	35395	1	Spark Plug-Resistor (Rj19lm)
㉗	29216	1	Nut-Lock, 10-32	⑩139	33369	1	Bracket-Gear, Governor
㉘	29642	1	Ring-Retaining	⑩140	650836	2	Screw, 10-24 X 1/2"
㉙	35776A	1	Piston-Pin & Ring Set (Std.)	⑩149	27882	1	Cap-Valve Spring
㉙	35777A	1	Piston, Pin & Ring Set (.010)	⑩	35862	1	Cap-Valve Spring
㉚	35773A	1	Piston & Pin ASM (Std.) (Incl. 43)	⑩150	27881	2	Spring-Valve
㉚	35774A	1	Piston & Pin ASM (.010" Os) (Incl. 43)	⑩151	32581	2	Keeper-Valve Spring
㉛	35779	1	Ring Set (Std.)	⑩169	27896A	2	Gasket-Cover, Valve Cover
㉛	35780	1	Ring Set (.010)	⑩170	28423	1	Body-Breather
㉜	35772	2	Ring-Retaining	⑩171	28424	1	Element-Breather
㉝	36898	1	Connecting Rod ASM (Incl. 47)	⑩172	28425	1	Cover-Valve
㉞	651033	2	Bolt-Rod, Connecting	⑩173	35350	1	Tube-Breather
㉟	34034	2	Lifter-Valve	⑩174	650128	3	Screw, 10-24 X 1/2"
㊱	36896	1	Dipper-Oil	⑩178	29752	6	Nut And Lock Washer Asm, 1/4-28
㊲	35375	1	Camshaft (Mcr)	⑩182	30088A	2	Screw, 1/4-28 X 1"
㊳	33273A	1	Extension-Housing, Blower	⑩183	34587A	1	Bracket-Choke
㊴	35262A	1	Gasket-Cover, Cylinder	⑩184	33263	1	Gasket-Carburetor To Intake Pipe
㊵	35376A	1	Cylinder Cover (Incl. 71,75, & 80-8)	⑩185	33877	1	Pipe-Intake
㊶	35377	1	Bushing-Crankshaft	⑩186	34667	1	Link-Governor
㊷	27642	1	Plug-Oil Drain	⑩	36652	1	Spring-Choke
㊸	35319	1	Seal-Oil	⑩200	34677	1	Control Bracket (Incl. 19, 203 & 204)
㊹	37587	1	Shaft-Governor	⑩203	31342	1	Spring-Compression
㊺	651080	2	Washer				
㊻	37588	1	Governor Gear ASM				
㊼	30588A	1	Spool-Governor				
㊽	29193	1	Ring-Retaining				
㊾	650833	7	Screw, 1/4-20 X 1-3/16"				
㊿	650832	1	Screw, 1/4-20 X 1-11/16"				
1	32589	1	Key-Flywheel				
2	611093	1	Flywheel				
3	650880	1	Washer-Belleville				

# Engine Assembly (continued) Tecumseh Model HMSK100-159494Y

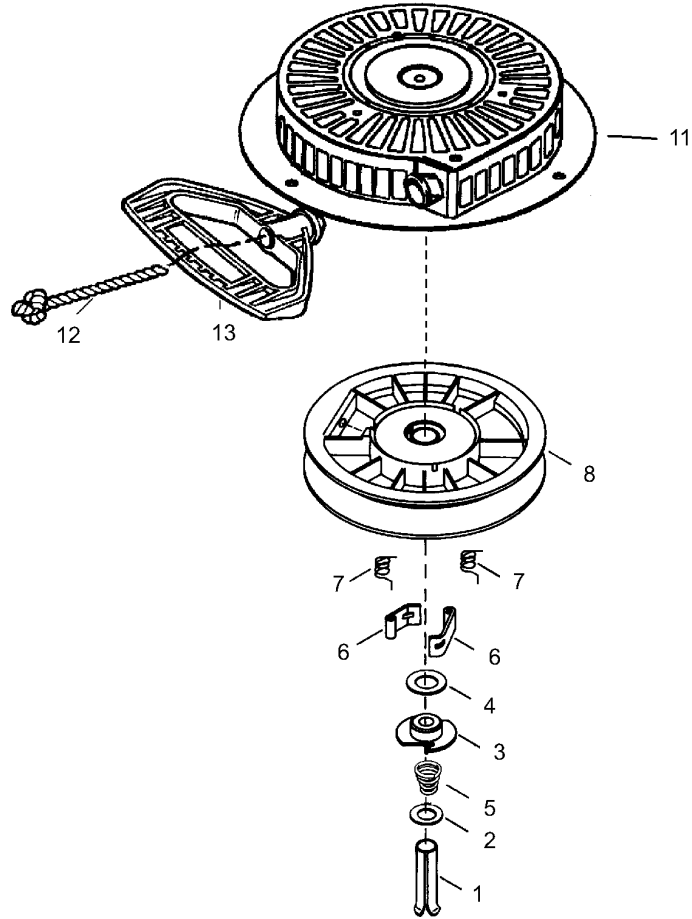


## Engine Assembly (continued)

### Tecumseh Model HMSK100-159494Y

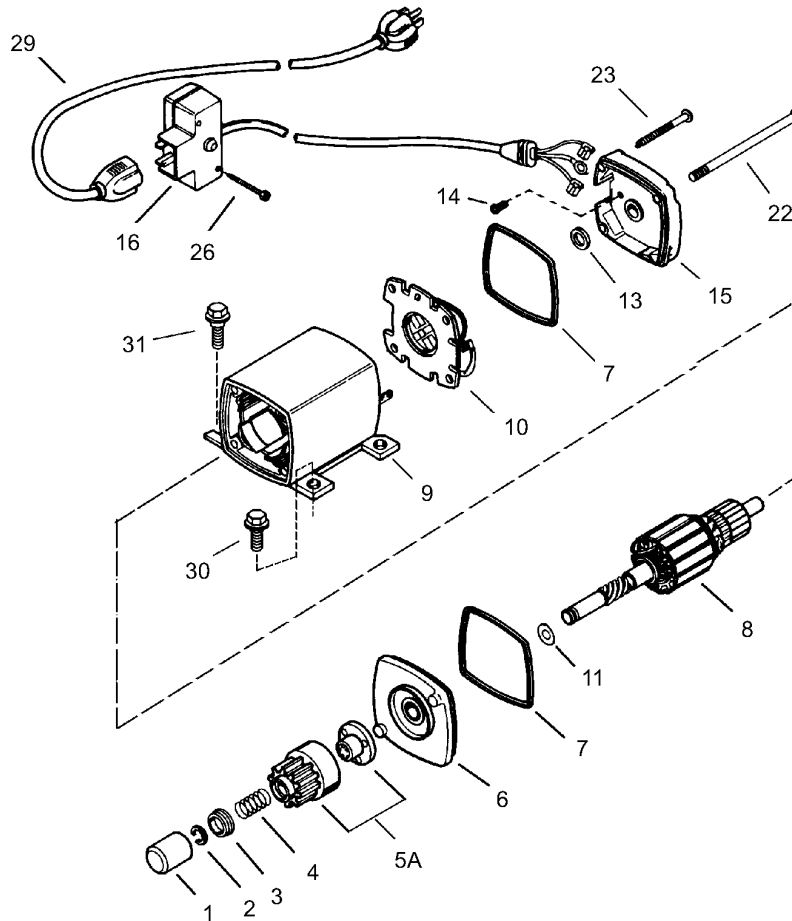
Ref	Part No.	Qty.	Description
②204	651029	1	Screw-Torx, 5-40 X 7/16"
②206	610973	1	Terminal
②207	33878	1	Link-Throttle
②209	650821	2	Screw
②211	28942	2	Screw, 10-32 X 3/8"
②212	36689	1	Speed Control Lever Bushing
②215	35440	1	Knob-Control
②219	34586	1	Rod-Choke
②220	35438	1	Knob-Choke
②223	650378	2	Screw-Torx, T-30, 5/16-18 X 1-1/8"
②224	27915A	1	Gasket-Pipe, Intake
②238	28820	2	Screw, 10-32 X 1/2"
②260	35447A	1	Housing-Blower
②261	650788	1	Screw, 1/4-20 X 3/4"
②262	651084	2	Screw-Torx, T-40, 5/16-24 X 21/32"
②	650802	1	Screw-Torx, T-30, 1/4-20 X 1/2"
②265	33272D	1	Cover-Head, Cylinder
②275	35056	1	Muffler
②276	31588	1	Plate-Locking
②277	651002	2	Screw, 5/16-18 X 4-3/16"
②285	35985B	1	Cup-Starter
②290	29774	1	Line-Fuel
②	30705	1	Line-Fuel
②292	26460	1	Clamp-Line, Fuel
②295	35857	1	Valve-Fuel Shut-Off
②298	650665	2	Screw, 1/4-15 X 3/4"
②300	34156A	1	Fuel Tank (Incl. 292 & 301)
②301	36246	1	Cap-Fuel
②305	33554	1	Oil Fill Tube
②307	35499	1	O-Ring
②308	35540	1	Clip-Tube, Fill
②310	36205	1	Oil Gauge ASM
②314	650873	1	Screw, 1/4-20 X 3/4"
②315	611111	1	Alternator Coil ASM (3/5)
②325	29443	1	Clip-Wire
②328	35062	2	Keys-Ignition
②335	35057A	1	Carburetor Cover
②336	650765	1	Screw, 10-32 X 1/2"
②340	34154	1	Bracket-Tank, Fuel
②341	34155	1	Bracket-Tank, Fuel
②343	35079	1	Bracket-Switch, Key
②	651060	1	Screw, 10-32 X 23/64"
②350	570682A	1	Primer ASM
②351	32180C	1	Line-Primer
②355	590574	1	Handle-Starter
②361	650990	2	Screw, T-30 1/4-20 X 15/32"
②364	37659	1	Bracket-Cover, Carburetor
②369	650819	2	Screw, 6-32 X 2-1/2"

Ref	Part No.	Qty.	Description
②	35077	1	Decal-Instruction
②	36501	1	Decal-Primer
②	37119	1	Decal-Warning
②	36695	1	Decal-Starter
②380	640054	1	Carburetor (Incl. Ref.# 184)
②381	650767	2	Screw, 8-32 X 27/64"
②390	590749	1	Rewind Starter ASM (Note: This Engine Could Have Been Built With 590733 Starter.)
②396	33329D	1	Electric Starter Motor
②400	36452B	1	Gasket Set
②420	730226A	1	Sae 5w30 4-Cycle Engine Oil (Quart)
②0	756278D	1	Shortblock



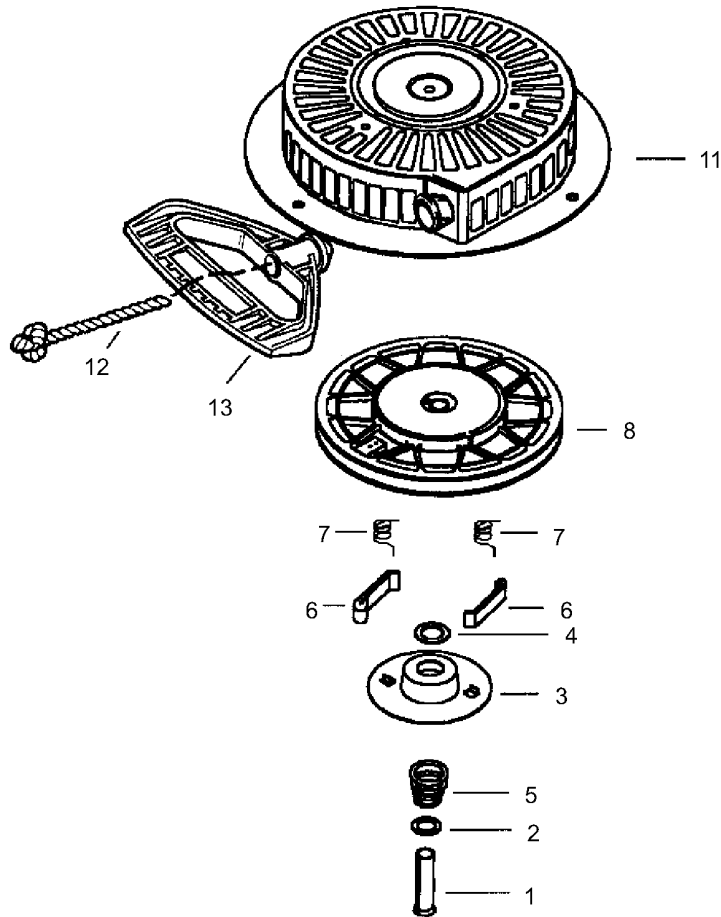
### Recoil Starter Part No. 590749à

Ref	Part No.	Qty.	Description				
1	590599A	1	Spring Pin (Incl. Ref.# 4)				
2	590600	1	Washer				
3	590679	1	Retainer				
4	590601	1	Washer				
5	590678	1	Spring-Brake				
6	590680	2	Dog-Starters				
7	590412	2	Spring-Dogs				
8	590682	1	Pulley And Rewind Spring ASM				
11	590750A	1	Starter Housing ASM				
12	590535	1	Rope-Starter (Length 98" X 9/64" Dia)				
13	590574	1	Handle-Starter				



## Electric Starter (110 Volt) Part No. 33329Eà

Ref	Part No.	Qty.	Description
❶	33451	1	Cover-Dust
❷	33842	1	Ring-Retaining
❸	33430	1	Retainer-Spring
❹	33431	1	Spring-Anti Drift
❺A	37050	1	Gear & Nut (Incl. Ref.# 2)
❻	35449	1	Drive End Cap ASM (Incl. Ref. #7)
❼	35450	2	O-Ring
❽	35915	1	Armature
❾	35451B	1	Housing ASM
❿	35452A	1	Brush Card ASM
⓫	35911	1	Washer-Thrust
⓬	590500	1	Washer-Thrust
⓭	33441	1	Screw-Ground
⓮	35453	1	Commutator End Cap ASM (Incl. Ref. #7)
⓯	35454	1	Switch Box ASM
⓰	35455	2	Bolt-Case
⓱	35456	1	Screw-Ground
⓴	650819	2	Screw, 6-32 X 2-1/2"
⓴	651032	2	Screw
⓶	32450B	1	Cord-Extension
⓷	30063	2	Screw-Torx
⓸	650820	2	Screw



### Rewind Starter Part No. 590733à

Ref	Part No.	Qty.	Description				
1	590599A	1	Spring Pin (Incl. Ref.# 4)				
2	590600	1	Washer				
3	590696	1	Retainer				
4	590601	1	Washer				
5	590697	1	Spring-Brake				
6	590698	2	Dog-Starter				
7	590699	2	Spring-Dog				
8	590709	1	Pulley And Rewind Spring ASM				
11	590734A	1	Starter Housing ASM				
12	590535	1	Rope-Starter (Length 98" X 9/64" Dia)				
13	590574	1	Handle-Starter				

# NOTES

## NOTES

## NOTES

