



11280XE Power Max Snowthrower

Model No. 38652 - 240000001 and up.

Parts Catalog

Ordering Replacement Parts

To order replacement parts, please supply: the part number, the quantity, and the description of each part desired.

Understanding Reference Numbers

Each identified part in an illustration has a reference number. The reference number for a part also appears in the parts list, along with other information about the part.

This catalog uses two special reference number formats, one to indicate parts in a service assembly and another to indicate the quantity of a given part in an illustration.

Service Assembly Reference Numbers

Parts in service assemblies have reference numbers in the form **a:b**. The **a** represents the reference number of the entire service assembly and the **b** represents a sequential number unique to each part within the service assembly.

For example, a wheel assembly might be identified by reference number 6, the tire by **6:1**, the valve by **6:2**, and the wheel by **6:3**. When you order the assembly identified by reference number 6, you receive all parts identified by reference numbers 6:1, 6:2, and 6:3. However, you may also order any part individually. Reference numbers of this type appear in illustrations and in part lists.

Reference Numbers Indicating Quantity

In an illustration, if a reference number indicates more than one part, the reference number has the form **nX y**. The **n** represents the quantity of the part, the **X** is the multiplication symbol, and the **y** represents the reference number.

For example, in an illustration, the reference number **2X 37** means that two of the parts identified by reference number 37 are indicated.

Part Description Abbreviations

Part descriptions in this catalog may include the following abbreviations.

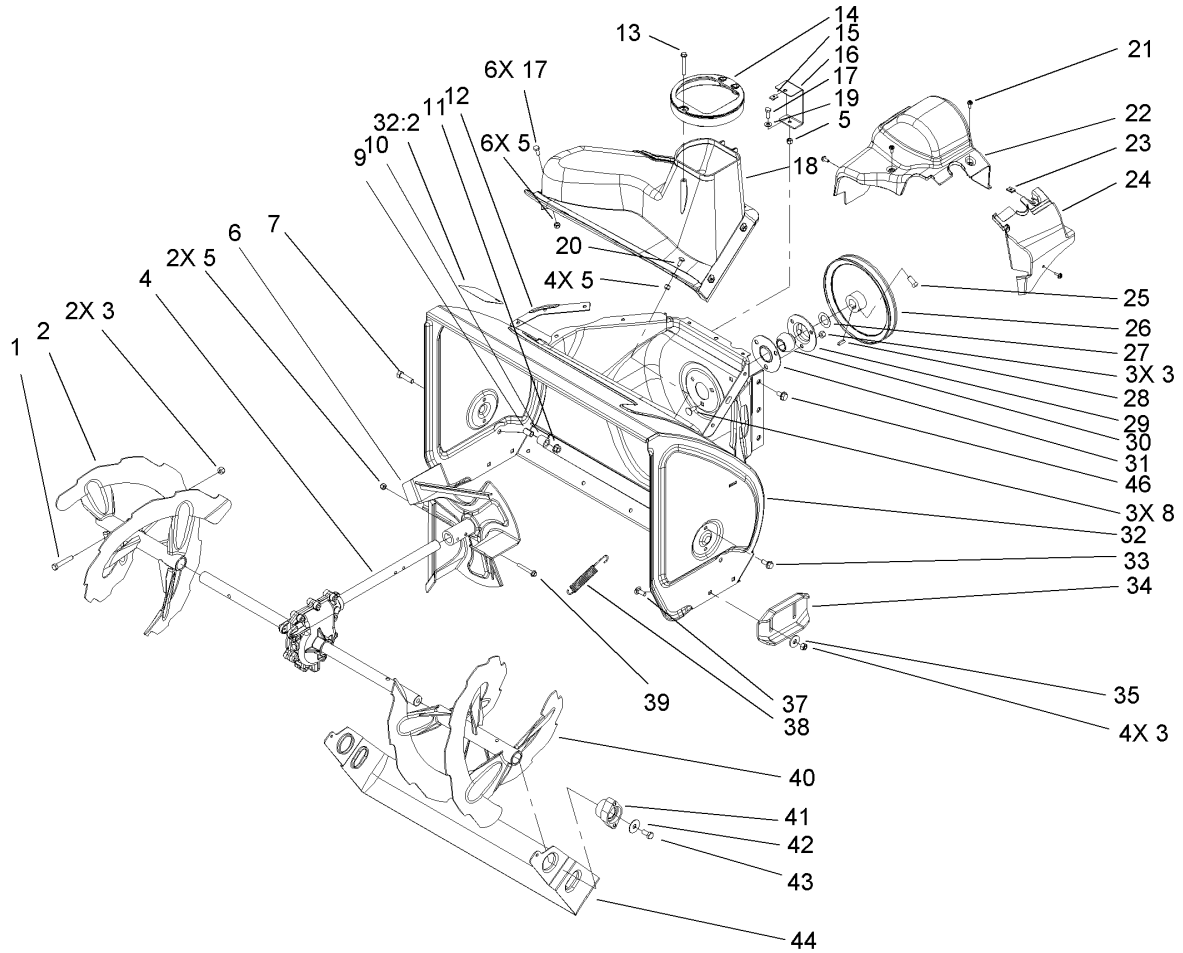
AR.	as required	HYD.	hydraulic
ASM.	assembly	INC.	incorporated
CARR.	carriage	LH.	left hand
DEG.	degrees	NI.	nylon insert
FH.	flat head	PPH.	phillips pan head
GA.	gauge	PTH.	phillips truss head
HF.	hex flange	PTO.	power take off
HH.	hex head	RH.	right hand
HHF.	hex head flange	SFH.	slotted fillister head
HHFTF.	hex head flange thread forming	SHH.	slotted hex head
HJ.	hex jam	SHWH.	slotted hex washer head
HLH.	hex lag head	SPH.	slotted pan head
HOC.	height-of-cut	SQH.	square head
HS.	hex	SRH.	slotted round head
HSBH.	hex socket button head	STD.	standard
HSFH.	hex socket flat head	TAP.	self tapping
HSH.	hex socket head	TTH.	torx truss head
HWH.	hex washer head	WH.	wing head
HWHTF.	hex washer head thread forming		

Footnotes

- ❶ Not illustrated
- ❷ Not serviced separately
- ❸ Obtain parts from your local Tecumseh dealer

Contents

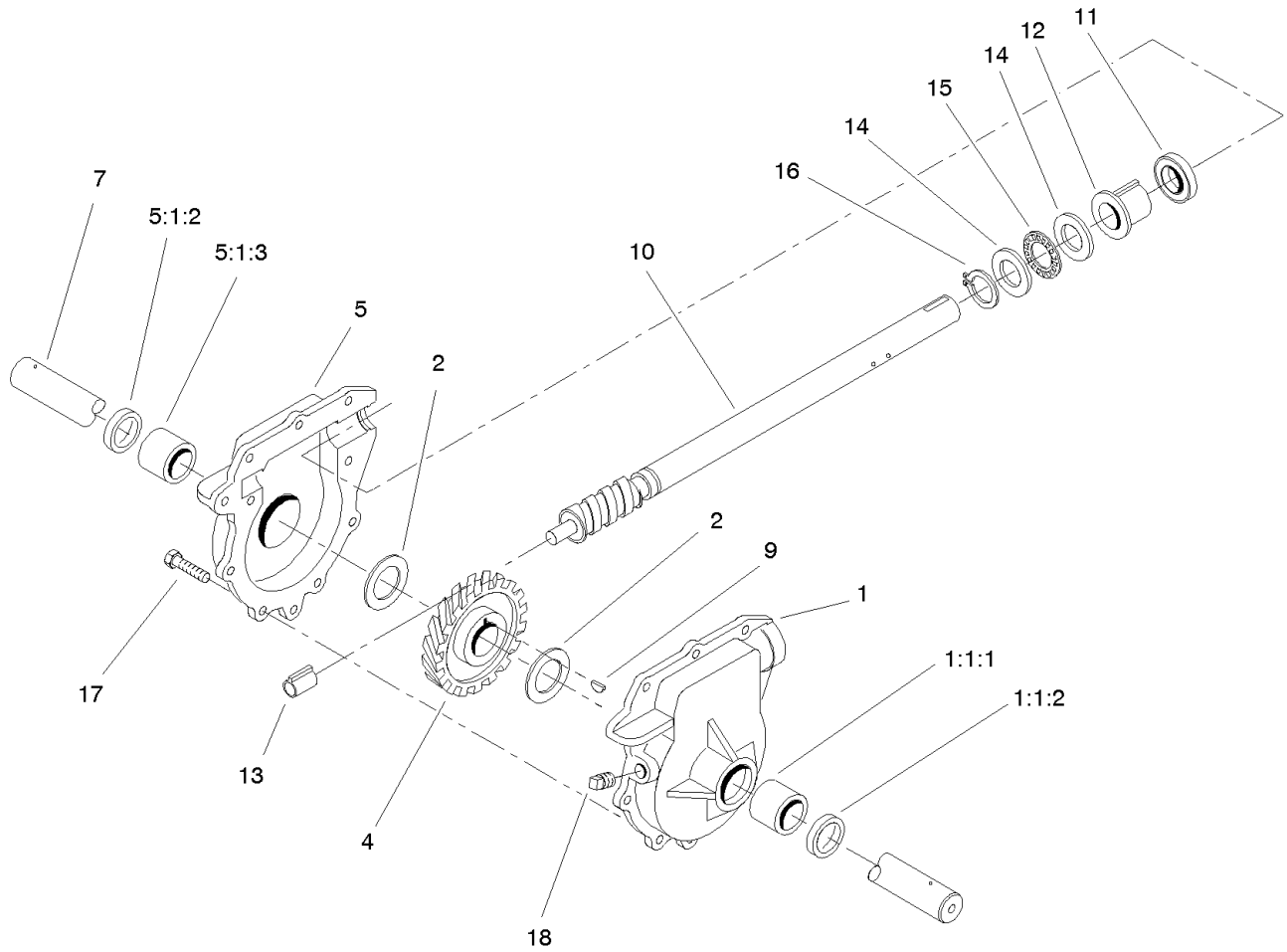
Description	Page	Description	Page
Auger and Housing Assembly 3	Engine Assembly Tecumseh Model No. Ohsk110-221734d 14
Gearcase Assembly Part No. 106-7254 4	Engine Assembly Tecumseh Model No. Ohsk110-221734d (continued) 16
Chute Assembly 5	Electric Starter (110 Volt) Part No. 33329Eà 18
Chain Drive Assembly 6	Recoil Starter Part No. 590749à 19
Frame Assembly 7	Rewind Starter Part No. 590733à 20
Handle and Control Assembly 9		
Handle Assembly 10		
Lever and Chute Control Assembly 11		
Engine Assembly 12		
Carburetor Assembly Part No. 640169 13		



Auger and Housing Assembly

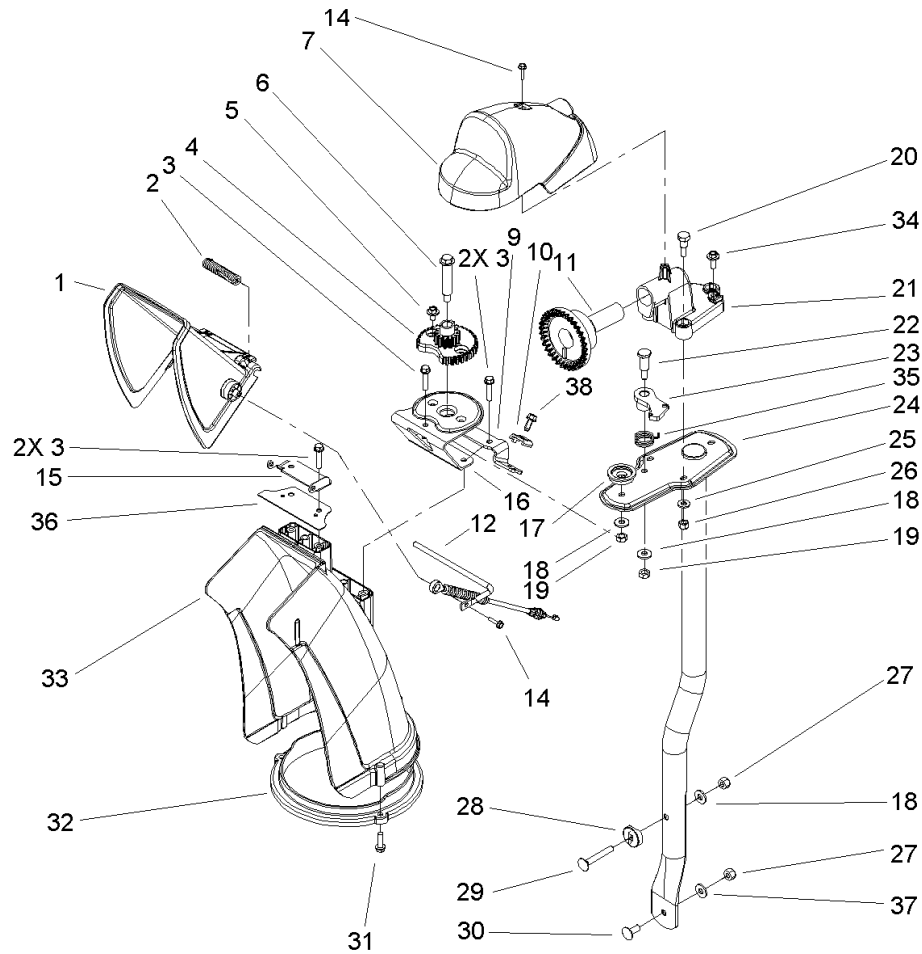
Ref	Part No.	Qty.	Description
1	322-10	2	Screw-HH
2	106-7291-03	1	Auger-Rh, 28in
3	3296-29	9	Nut-Lock, NI
4	106-7254	1	28in Auger Gearcase ASM
5	3296-42	13	Nut-Lock, NI
6	106-4576-03	1	Impeller ASM
7	323-29	2	Screw-HH
8	3230-23	3	Screw-CARR
9	106-4501	2	Scraper-Stop, Spacer
10	106-7318	2	Cushion-Scraper, Stop
11	32128-21	2	Nut-HF
12	107-1017-03	1	Seal-Cover Flange
13	107-3003	1	Screw-Plastite
14	107-3006	1	Guide-Chute
15	107-1013	1	Nut-Speed, U-Type
16	107-1014-03	1	Bracket-Cover, Clip Nut
17	321-4	7	Screw-HH
18	105-9979	1	Cover
19	3256-22	1	Washer-Flat
20	3229-1	4	Screw-CARR
21	32144-112	4	Screw-HWHTF
22	107-1001	1	Cover-Belt
23	701493	1	Nut-Speed
24	107-1016	1	Cover-Belt Extension

Ref	Part No.	Qty.	Description
25	3242-4	2	Screw-Set, SQH
26	62-1300	1	Pulley-Impeller
27	252-80	1	Washer-Thrust
28	3257-23	1	Key-Woodruff
29	26-6110	1	Flange-Cup, Bearing
30	63-3450	1	Bearing-Ball
31	26-6120	1	Flange-Cup, Bearing
32	107-3823	1	28in Auger Housing ASM
32:2	53-7670	1	Decal-Warning, Auger
33	32144-70	4	Screw-HH
34	106-4588-01	2	Skid
35	52-2861	4	Washer
37	3230-16	4	Screw-CARR
38	106-4502	2	Spring-Scraper
39	321-44	2	Screw-HHF
40	106-7301-03	1	28in LH Auger ASM
41	106-4570	2	Auger-Bearing
42	3-0750	2	Washer
43	323-4	2	Screw-HH
44	106-4590-01	1	Scraper-Pivoting, 28in
46	32144-14	6	Screw-HWH
47	99-9300	1	Cord-Extension



Gearcase Assembly Part No. 106-7254

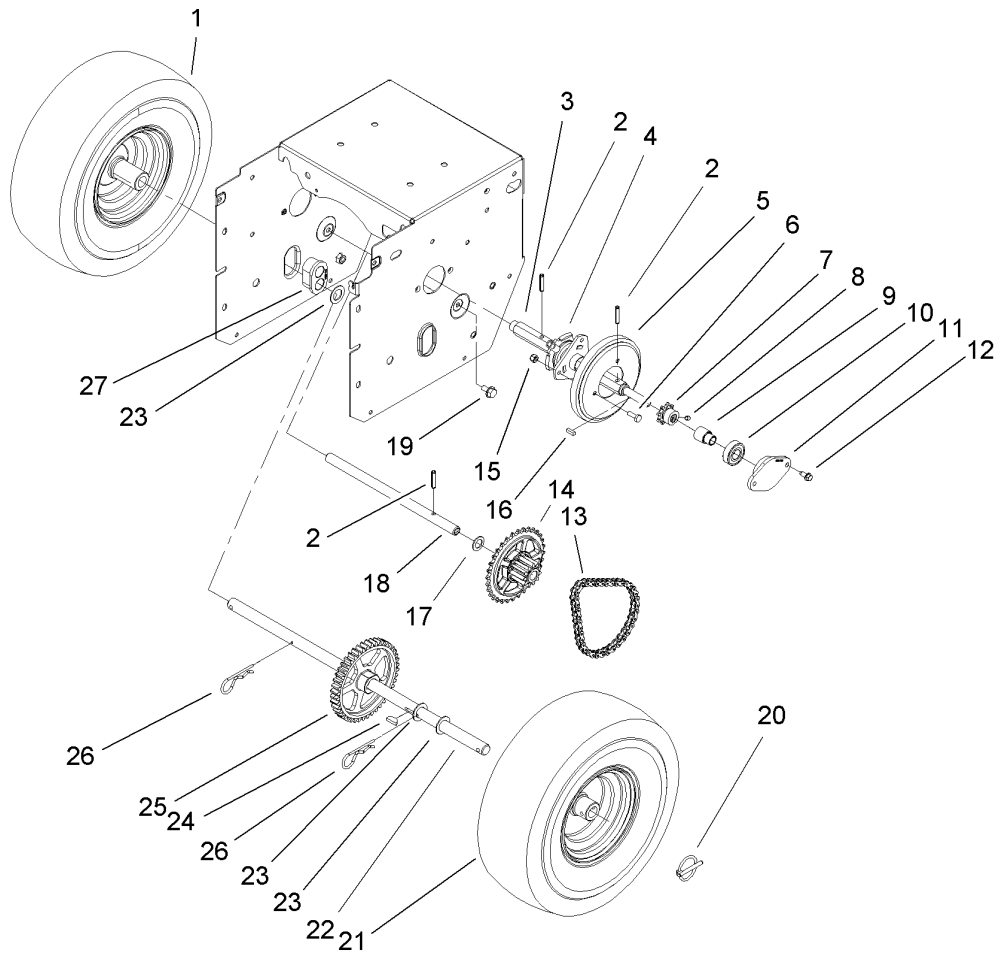
Ref	Part No.	Qty.	Description
1	74-1570	1	LH Auger Gearcase ASM
② 1:1		1	LH Auger Gearcase ASM
1:1:1	256-237	1	Bushing
1:1:2	7-0045	1	Seal-Oil
2	252-71	2	Washer-Thrust
4	62-0120	1	Gear-Helical
5	74-1580	1	RH Auger Gearcase ASM
② 5:1		1	RH Auger Gearcase ASM
5:1:2	7-0045	1	Seal-Oil
5:1:3	256-237	1	Bushing
7	106-4421	1	Shaft-Auger, 28in
9	3257-10	1	Key-Woodruff
10	66-7811	1	Shaft-Impeller
11	253-149	1	Seal-Oil
12	37-6560	1	Bushing-Input
13	62-1150	1	Bushing-Worm
14	252-78	2	Bearing-Thrust
15	252-76	1	Bearing-Thrust
16	32151-33	1	Ring-Retaining, Ext
17	32144-110	9	Screw-HWH
18	281-1	1	Plug-Pipe, SQH



Chute Assembly

Ref	Part No.	Qty.	Description
1	106-4587	1	Deflector-Chute
2	106-4594	1	Spring-Torsion
3	46-8092	5	Screw-Plastite
4	106-4472	1	Gear-Chute
5	46-6810	2	Screw And Washer ASM
6	100-9880	1	Bolt-Shoulder
7	106-4585	1	Cover-Gear, Chute
9	106-7296	1	Bracket-Cable, Clamp
10	106-7297	1	Clamp-Cable
11	106-4471	1	Gear-Face
12	107-1021	1	Rod-Deflector
14	98-1375	2	Screw-HWH
15	106-7266	1	Bracket-Deflector
16	106-4582-03	1	Bracket-Support, Chute
17	106-4422	1	Spacer-Chute
18	3256-2	3	Washer-Flat
19	3296-47	2	Nut-Lock, NI
20	106-7276	3	Screw-Shoulder
21	106-7257	1	Mount-Gear, Face
22	63-2650	1	Screw-Shoulder
23	106-4476	1	Latch-Chute
24	106-7253-03	1	Tube-Support
25	3256-22	3	Washer-Flat
26	3296-42	3	Nut-Lock, NI

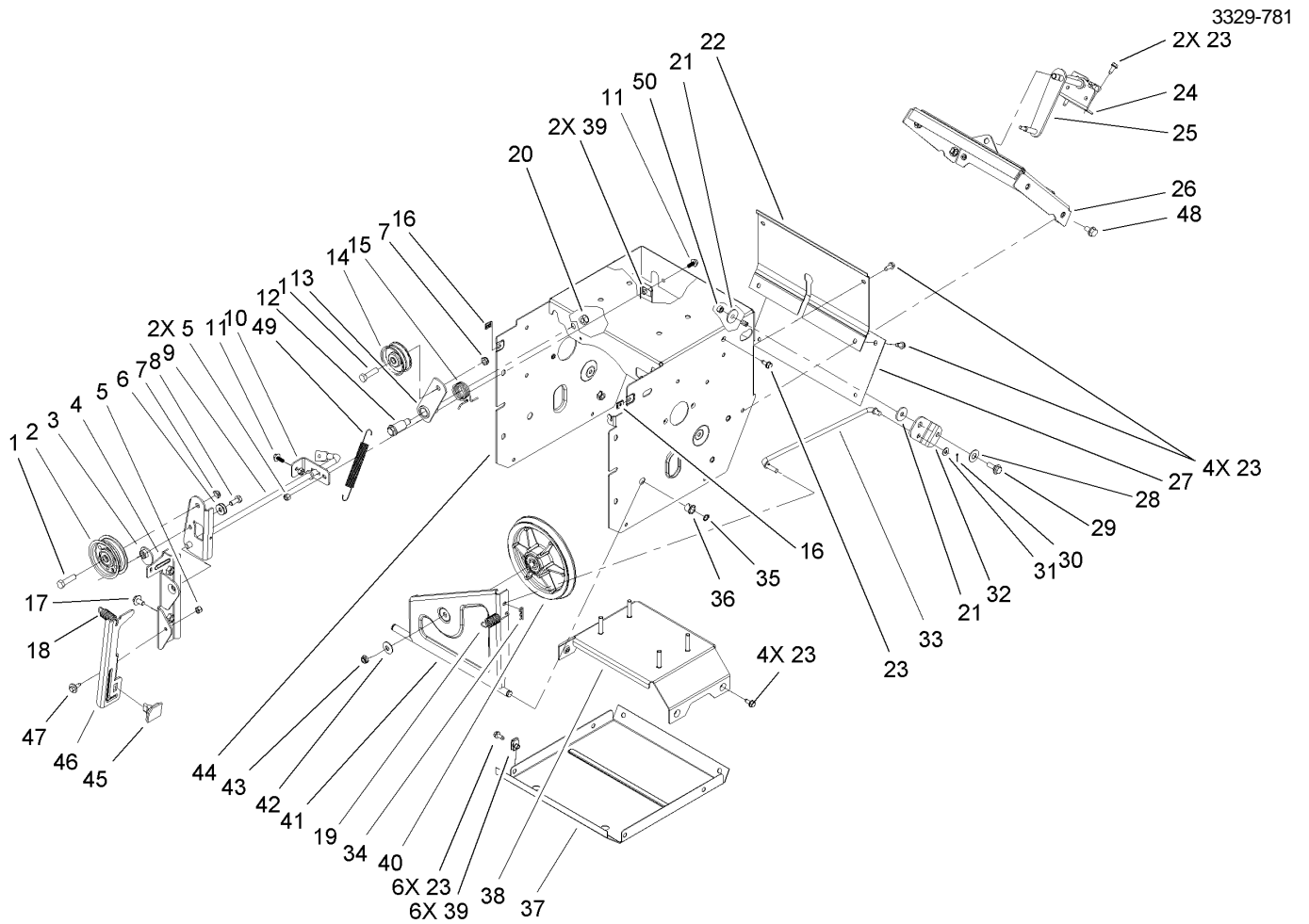
Ref	Part No.	Qty.	Description
27	3296-29	2	Nut-Lock, NI
28	106-7260	1	Washer-Curved
29	3230-5	1	Screw-CARR
30	3230-23	1	Screw-CARR
31	46-8091	3	Screw-HWH
32	105-9991	1	Ring-Chute
33	106-4440	1	Chute-Discharge
34	46-6811	1	Screw-HWH
35	106-4475	1	Spring-Torsion
36	107-1019	1	Seal-Chute
37	3290-456	1	Washer-Belleville
38	32144-10	1	Screw-HWH



Chain Drive Assembly

Ref	Part No.	Qty.	Description
1	107-3042	1	Tire
1	107-3043	1	Rim-Tire
2	32121-9	3	Pin-Spring
3	106-4593	1	Shaft-Hex, Chain
4	106-4434	1	Trunion-Hex
5	106-4480	1	Wheel-Friction
6	321-4	3	Screw-HH
7	106-7317	1	Sprocket-8 Tooth
8	3245-32	2	Screw-HS
9	106-7250	1	Spacer-Bearing, Sleeve
10	100-1048	2	Bearing-Ball
11	106-7308	2	Retainer-Bearing
12	32144-10	4	Screw-HWH
13	106-7293	1	Chain-Roller
13	2710-6	1	Link-Connecting
14	106-7261	1	Sprocket ASM
15	3296-42	3	Nut-Lock, NI
16	94-8850	1	Key-Square
17	107-3041	1	Washer-Flat
18	106-4592	1	Shaft-Intermediate
19	32144-14	2	Screw-HWH
20	107-3039	2	Klik Pin ASM
21	107-3042	1	Tire
21	107-3043	1	Rim-Tire

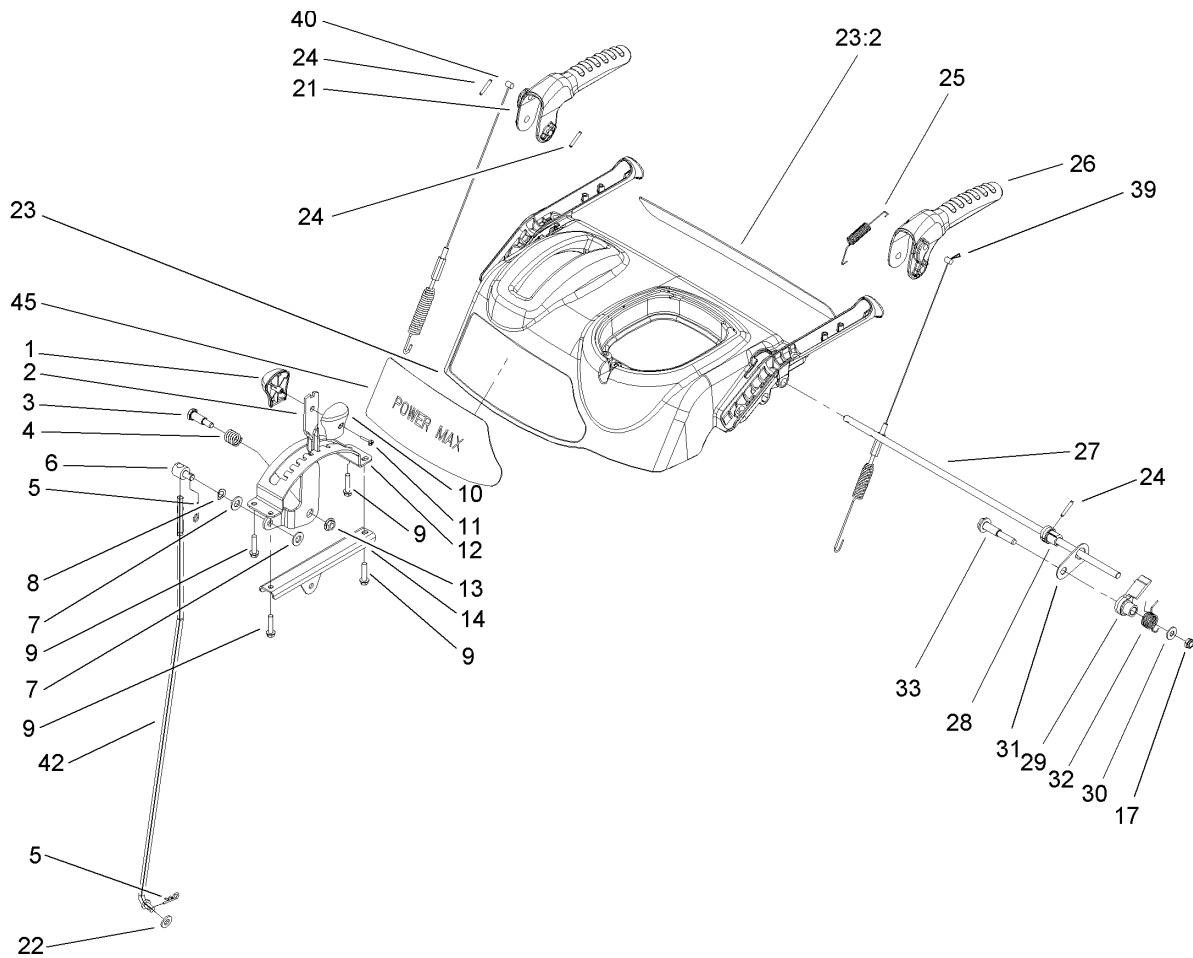
Ref	Part No.	Qty.	Description
22	106-4449	1	Shaft-Axle
23	3-8664	3	Washer-Thrust
24	3257-7	1	Key-Woodruff
25	106-4572	1	Gear-Axle, 44 Tooth
26	3290-343	2	Pin-Hair
27	106-4558	2	Bearing-Axle



Frame Assembly

Ref	Part No.	Qty.	Description
1	323-8	2	Screw-HH
2	92-7104	1	Pulley-Idler
3	107-1047	1	Nut ASM
4	107-1039	1	Bracket-Idler, Impeller
5	3296-42	3	Nut-Lock, NI
6	3290-456	1	Washer-Belleville
7	3296-59	2	Nut-Lock, NI
8	322-3	1	Screw-HH
9	106-7339-03	1	Auger Clutch ASM
10	106-7341	1	Bracket-Clutch Rear
11	99-6810	2	Screw-HH
12	107-1022	1	Bolt-Shoulder
13	106-7312	1	Arm-Idler, Traction
14	3-4244	1	Pulley-Idler
15	93-4816	1	Spring-Torsion, RH
16	107-1013	2	Nut-Speed, U-Type
17	3234-7	2	Screw-HHF
18	107-3829	1	Spring-Extension
19	107-1003	1	Spring-Extension
20	3296-76	1	Nut-Lock, NI
21	5-4460	2	Washer-Pivot
22	106-4556-01	1	Cover-Upper
23	32144-10	17	Screw-HWH
24	106-7325	1	Bracket-Shift Rod

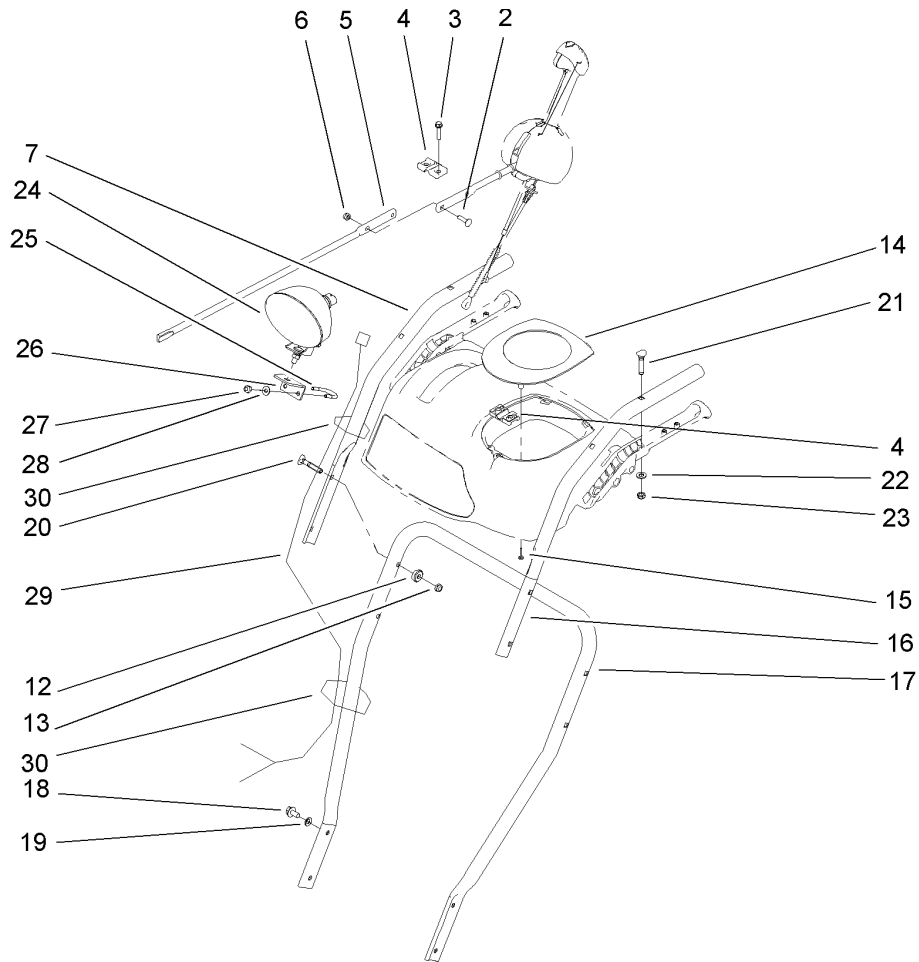
Ref	Part No.	Qty.	Description
25	106-7268	1	Lever-Control, Traction
26	106-7342-01	1	Shift Plate ASM
27	106-7345-01	1	Cover-Lower
28	25-5640	1	Washer
29	27-0410	1	Screw-Shoulder
30	3272-4	1	Pin-Cotter
31	3256-23	1	Washer-Flat
32	107-1011	1	Bellcrank-Drive
33	106-4467	1	Link-Control, Speed
34	3290-307	1	Pin-Hair
35	32151-61	2	Ring-Retaining
36	256-257	2	Bushing-Nyliner
37	106-7330-01	1	Pan-Bottom
38	106-7315	1	Brace Frame ASM
39	107069	8	Clip
40	106-4500	1	Pulley-Traction
41	106-7274	1	Pulley Pivot ASM
42	3290-340	1	Washer-Belleville
43	3296-5	1	Nut-Lock, NI
44	106-4495-01	1	Frame-Traction
45	66-8060	1	Pad-Brake
46	107-1000	1	Arm-Brake
47	92-9698	1	Screw-Shoulder
48	32144-14	4	Screw-HWH



Handle and Control Assembly

Ref	Part No.	Qty.	Description
1	106-4423	1	Knob-Shift, RH
2	106-7278-03	1	Selector-Speed
3	63-2650	1	Screw-Shoulder
4	107-3017	1	Spring-Compression
5	3290-307	2	Pin-Hair
6	101161	1	Trunnion
7	3256-24	2	Washer-Flat
8	612586	1	Washer-Spring
9	46-8092	4	Screw-Plastite
10	105-9999	1	Knob-Shift, LH
11	94-4496	1	Screw-PPH
12	106-7277-03	1	Guide-Selector, Speed
13	32128-13	1	Nut-HF
14	106-7279-03	1	Mount-Selector, Speed
17	3296-72	1	Nut-Lock, NI
21	106-4413	1	Lever-Auger
22	3256-38	1	Washer-Flat
23	107-3825	1	Control Panel ASM
23:2	106-4521	1	Decal-Control Panel
24	32121-125	3	Pin-Spring
25	107-3001	1	Spring-Tension
26	106-4410	1	Lever-Traction
27	105-9996	1	Rod-Lockout
28	107-1043	1	Cam-Lockout

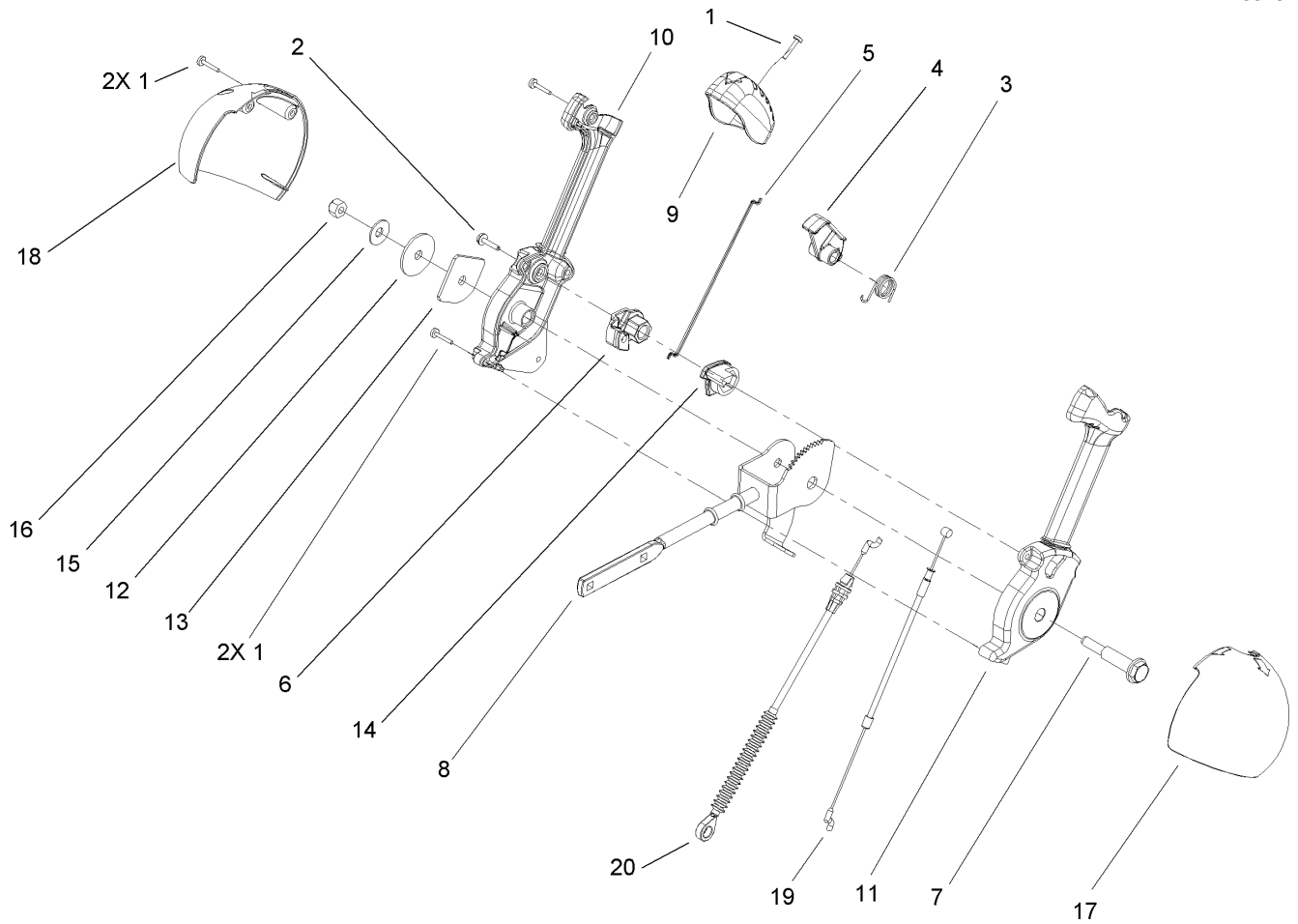
Ref	Part No.	Qty.	Description
29	107-1044	1	Latch-Lockout
30	98-3499	1	Washer-Flat
31	107-3000	1	Link-Lockout
32	105-9998	1	Spring-Torsion
33	106-4412	1	Screw-Shoulder
39	106-4563	1	Cable-Traction
40	107-3830	1	Cable-Auger
42	107-1005	1	Rod-Shift
45	107-3034	1	Decal-Control Panel, Tss



Handle Assembly

Ref	Part No.	Qty.	Description
2	3229-30	2	Screw-CARR
3	46-8092	2	Screw-Plastite
4	105-9987	2	Support-Rod
5	106-7283	1	Rod-Chute, Front
6	3296-73	2	Nut-Lock, NI
7	105-9994-03	1	Handle-Upper, RH
12	107-3844	4	Washer
13	3296-72	4	Nut-Lock, NI
14	106-4586	1	Cover-Panel, Control
15	94-4496	2	Screw-PPH
16	105-9993-03	1	Handle-Upper, LH
17	105-9981-03	1	Handle-Lower
18	32144-14	4	Screw-HWH
19	3290-475	4	Washer-Belleville
20	92-2260	4	Screw-Handle
21	107-3018	4	Screw-Handle
22	3256-70	4	Washer-Flat
23	3296-72	4	Nut-Lock, NI
24	106-4510	1	Headlamp-ASM
25	107-3024	1	Clamp-Light
26	107-1020-03	1	Bracket-Light
27	3296-73	2	Nut-Lock, NI
28	3256-1	2	Washer-Flat
29	106-4511	1	Harness-Wire

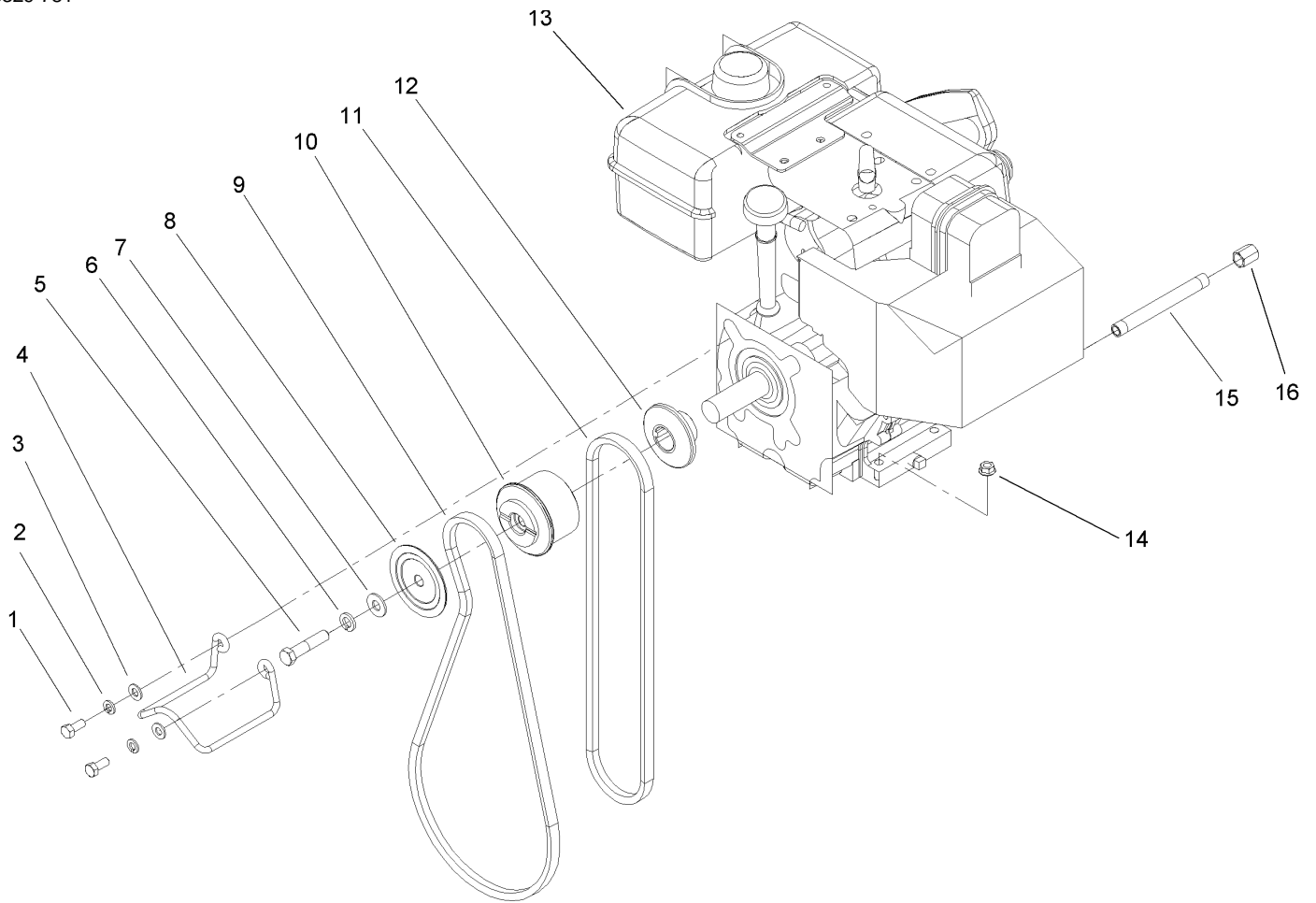
Ref	Part No.	Qty.	Description
30	614249	2	Strap-Tie



Lever and Chute Control Assembly

Ref	Part No.	Qty.	Description
1	94-4496	5	Screw-PPH
2	98-1375	1	Screw-HWH
3	105-9982	1	Spring-Torsion
4	105-9984	1	Trigger-Latch
5	105-9985	1	Link-Latch
6	105-9988	1	Lever-Cable, Deflector
7	105-9995	1	Screw-Shoulder
8	106-4479	1	Rod-Control, Chute
9	106-7280	1	Cap-Lever
10	106-7281	1	Lever-Chute Control, RH
11	106-7282	1	Lever-Chute Control, LH
12	107-3002	1	Washer-Nylon
13	106-7295	1	Plate-Friction
14	106-7310	1	Pawl-Latch
15	3290-456	1	Washer-Belleville
16	3296-29	1	Nut-Lock, NI
17	105-9986	1	Cover-Chute Lever, LH
18	106-7292	1	Cover-Chute Lever, RH
19	105-9989	1	Cable-Chute Release
20	105-9990	1	Cable-Control, Deflector

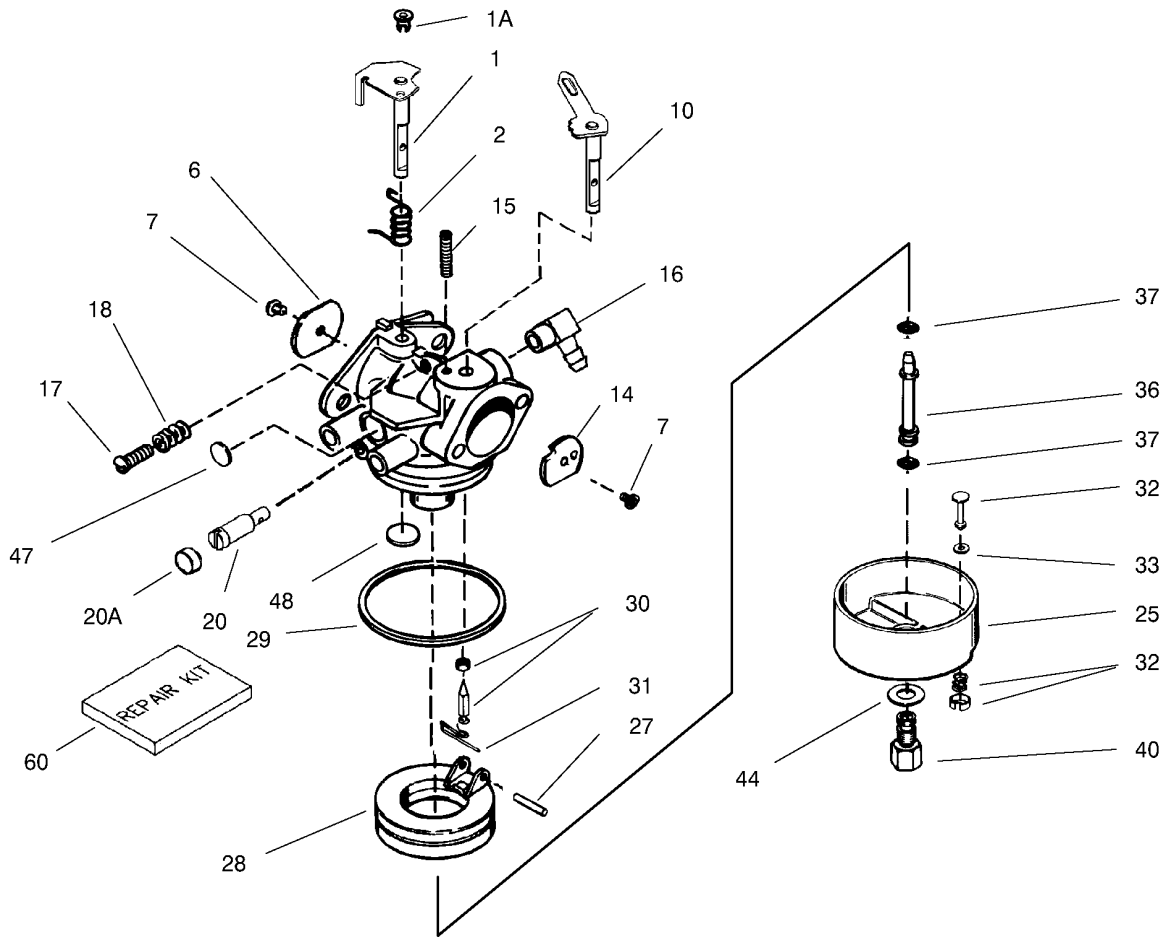
--	--	--	--



Engine Assembly

Ref	Part No.	Qty.	Description
1	3210-3	2	Screw-HH
2	3253-4	2	Washer-Lock
3	3256-23	2	Washer-Flat
4	107-3835	1	Guide-Belt
5	3212-8	1	Screw-HH
6	3253-6	1	Washer-Lock
7	3256-4	1	Washer-Flat
8	62-0940	1	Sheave-Half, Impeller
9	106-4498	1	Belt-V
10	106-7333	1	Pulley-Engine, Center
11	94-8812	1	V-Belt, Traction
12	106-7334	1	Sheave-Half, Traction
13		1	Engine 11hp Tecumseh Model No. Ohsk110-221734d
14	32128-20	4	Nut-HF
15	289-34	1	Nipple-Pipe
16	288-2	1	Cap-Pipe

--	--	--	--



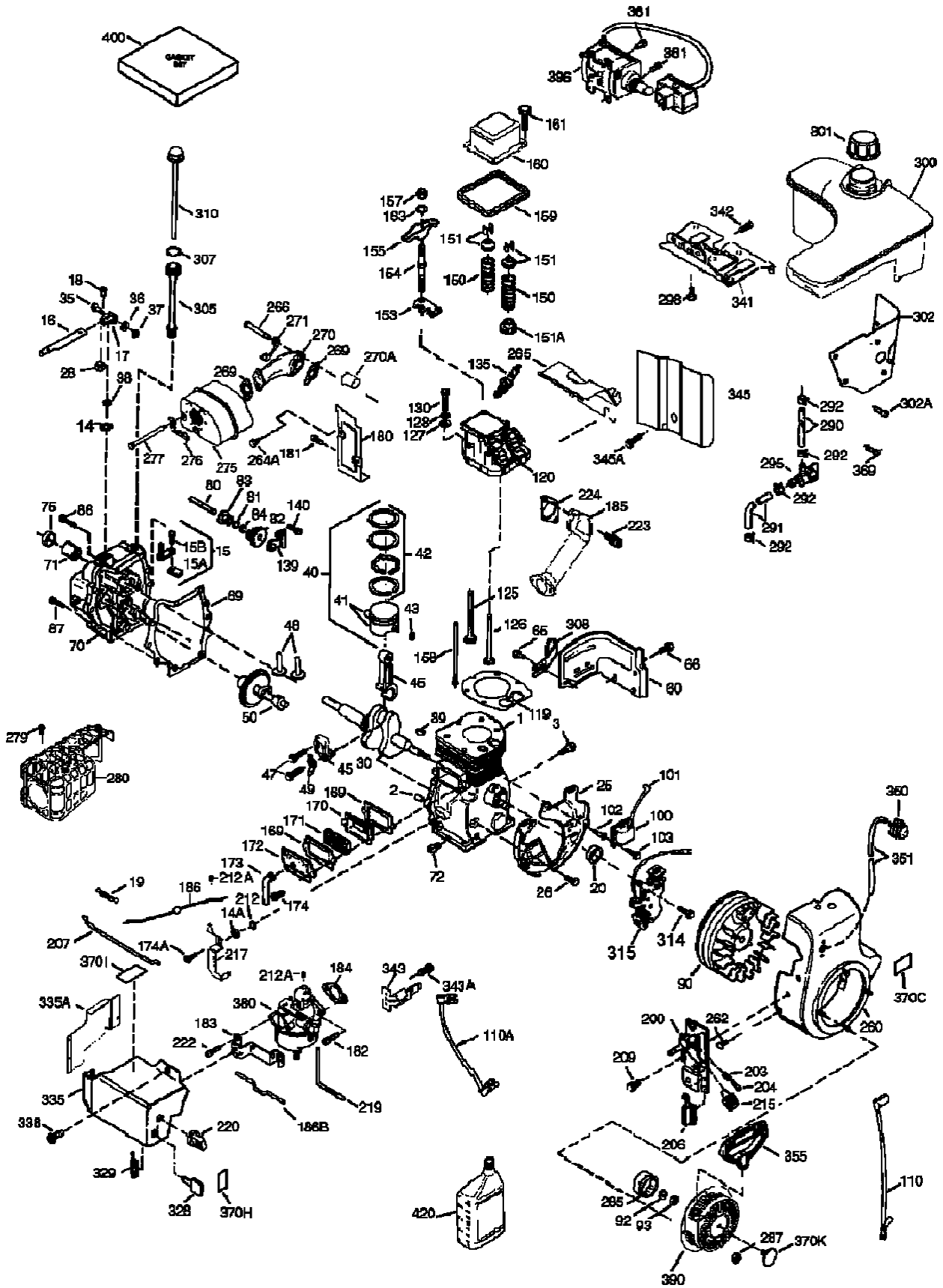
Carburetor Assembly Part No. 640169

Ref	Part No.	Qty.	Description
1	632777	1	Throttle Shaft And Lever ASM
1A	36288	1	Bushing
2	631970	1	Throttle Return Spring
6	640109	1	Shutter-Throttle
7	650506	2	Shutter Screw
10	632778	1	Shaft/lever/choke ASM
14	632189	1	Shutter-Choke
15	630735	1	Choke Positioning Spring
16	632527	1	Fitting-Fuel
17	651025	1	Screw-Idle
18	630766	1	Tension Spring
20	640027	1	Screw-Idle Restrictor
20A	640053	1	Idle Restrictor Screw Cap
25	632594A	1	Float Bowl ASM (Incl. Ref.# 32 & 33)
27	631024	1	Float Shaft
28	632802	1	Float (Plastic)
29	631028	1	Float Bowl O-Ring
30	631021	1	Inlet Needle, Seat, Clip (Incl. Ref.# 31)
31	631022	1	Spring Clip
32	27136A	1	Bowl Drain ASM
33	27554	1	Drain Plunger Gasket
36	640013	1	Tube-Nozzle, Main

Ref	Part No.	Qty.	Description
37	632547	2	O-Ring, Main Nozzle Tube
40	640170	1	Nut-Bowl, High Speed
44	27110A	1	Bowl Nut Washer
47	630748	1	Welch Plug, Idle Mixture Well
48	631027	1	Welch Plug, Vent
60	632760	1	Repair Kit

Engine Assembly

Tecumseh Model No. Ohsk110-221734d



Engine Assembly

Tecumseh Model No. Ohsk110-221734d

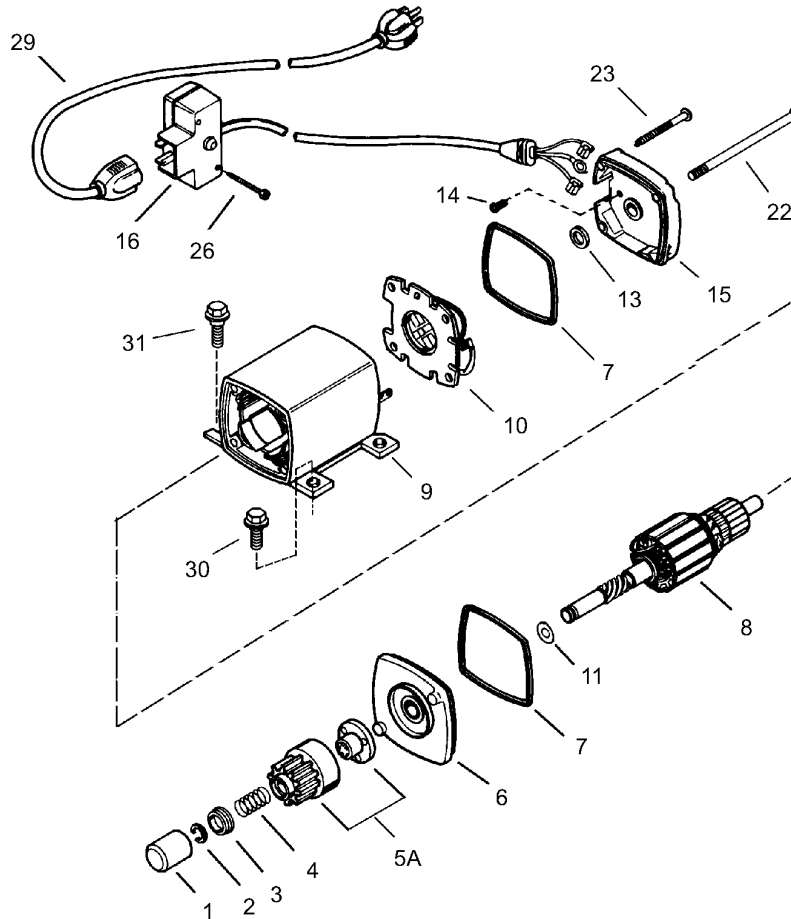
Ref	Part No.	Qty.	Description	Ref	Part No.	Qty.	Description
①	37251	0	Cylinder (Incl. Ref.# 2 & 20)	⑧3	30588A	1	Spool-Governor
②	27652	2	Pin-Dowel	⑧4	29193	1	Ring-Retaining
③	650820	2	Screw, 1/4-20 X 1/2"	⑧6	650833	7	Screw, 1/4-20 X 1-3/16"
⑭	28277	1	Washer	⑧7	650832	1	Screw, 1/4-20 X 1-11/16"
⑭A	651057	1	Washer	⑧9	32589	1	Key-Flywheel
⑮	30699C	1	Governor Rod (Incl. Ref.#15a & 15b)	⑨0	611093	1	Flywheel (W/ring Gear)
⑮A	30700	1	Yoke-Governor	⑨2	650880	1	Washer-Lock
⑮B	650494	1	Screw, 6-40 X 5/16"	⑨3	650881	1	Nut-Flywheel
⑯	37255A	1	Governor Lever (Incl. 212a)	⑩0	35135A	1	Solid State Ignition (Incl. Ref. #101)
⑰	29916	1	Clamp-Lever, Governor	⑩1	610118	1	Cover-Spark Plug
⑱	651028	1	Screwtorx, T-15 (8-32 X 3/8")	⑩2	651024	2	Stud-Mounting, Solid State
⑲	36281	1	Spring	⑩3	651007	2	Screw-Torx, T-15 (10-24 X 15/16")
⑳	35319	1	Seal-Oil	⑩10	35187	1	Wire-Ground
㉕	37707A	1	Baffle-Housing, Blower	⑩10A	37047	1	Wire-Ground
㉖	650561	2	Screw, 1/4-20 X 5/8"	⑩19	37256	1	Gasket-Cylinder Head
㉘	30322	1	Nut-Lock, 10-32	⑩20	37516	1	Cylinder Head (Incl. Ref. #151a & 270a)
㉚	37272	1	Crankshaft	⑩25	36934	1	Valve-Exhaust (Std.)
㉜	29826	1	Screw, 10-32 X 3/4"	⑩25	36936	1	Valve-Exhaust (1/32)
㉞	29918	1	Washer-Lock	⑩26	36935	1	Valve-Intake (Std.)
㉟	29216	1	Nut-Lock, 10-32	⑩27	650691	6	Washer
㊱	29642	1	Ring-Retaining	⑩28	650690	6	Belleville Washer
㊳	40011	1	Piston, Pin And Ring Set (Std.)	⑩30	650697A	6	Screw
㊳	40012	1	Piston, Pin And Ring Set (.010" Os)	⑩35	34645	1	Spark Plug (Rn4c)
㊴	40009	1	Piston & Pin ASM (Std.) (Incl. Ref.#43)	⑩39	33369	1	Bracket-Gear, Governor
㊴	40010	1	Piston & Pin ASM (.010) (Incl. Ref.#43)	⑩40	650836	1	Screw, 10-24 X 1/2"
㊵	40013	1	Ring Set (Std.)	⑩50	33507	2	Spring-Valve
㊵	40014	1	Ring Set (.010" Os)	⑩51	33508	2	Keeper-Valve Spring
㊶	27888	2	Ring-Retaining, Piston Pin	⑩51A	35862	1	Cap-Valve Spring
㊷	36897	1	Connecting Rod ASM (Incl. Ref.# 47 & 49)	⑩53	35949	1	Guide-Rod, Push
㊹	651033	2	Bolt-Rod, Connecting	⑩54	650945	2	Stud-Arm, Rocker
㊺	35313	2	Lifter-Valve	⑩55	35950	2	Arm-Rocker
㊻	36896	1	Dipper-Oil	⑩57	650947	2	Nut-Jam
㊼	37517	1	Camshaft (Mcr)	⑩58	35466	2	Rod-Push
㊽	35316A	1	Extension-Housing, Blower	⑩59	35952	1	Gasket-Cover, Rocker Arm
㊾	30200	1	Screw	⑩60	35953A	1	Cover-Rocker Arm
㊿	30063	1	Screw, Torx T-30, 1/4-20 X 1/2"	⑩61	30063	4	Screw, Torx T-30, 1/4-20 X 1/2"
①	37342	1	Gasket-Cover, Cylinder	⑩63	650890	2	Washer
②	37273B	1	Cylinder Cover (Incl. Ref.#71,75 & 80-84)	⑩69	27896A	2	Gasket-Cover, Valve
③	35377	1	Bushing-Crankshaft	⑩70	28423	1	Body-Breather
④	27642	1	Plug-Oil Drain	⑩71	28424	1	Element-Breather
⑤	35319	1	Seal-Oil	⑩72	28425	1	Cover-Valve
⑥	37587	1	Shaft-Governor	⑩73	35350	1	Tube-Breather
⑦	651080	1	Washer	⑩74	650128	2	Screw, 10-24 X 1/2"
⑧	37588	1	Governor Gear ASM (Incl. Ref. #81)	⑩74A	651056	1	Screw
				⑩80	37101	1	Blower Housing Extension

Engine Assembly

Tecumseh Model No. Ohsk110-221734d (continued)

Ref	Part No.	Qty.	Description
③181	30200	2	Screw
③182	650517	0	Screw
③183	34583A	1	Bracket-Choke
③184	33263	1	Gasket-Carburetor To Intake Pipe
③185	37085	1	Pipe-Intake
③186	37261	1	Link-Governor
③186B	36653	1	Spring-Choke
③200	35702	1	Control Bracket (Incl. Ref.#203,204 & 206)
③203	31342	1	Spring-Compression
③204	651029	1	Screw-Torx, 5-40 X 7/16"
③206	610973	2	Terminal
③207	37262	1	Link-Throttle
③209	650821	2	Screw
③212	30773A	1	Bushing
③212A	36288	1	Bushing
③215	35440	1	Knob-Control
③217	37260	1	Lever-Bellcrank
③219	35689	1	Rod-Choke
③220	35438	1	Knob-Choke
③222	28820	2	Screw, 10-32 X 1/2"
③223	650971	2	Screw
③224	33515A	1	Gasket-Pipe
③260	37092A	1	Housing-Blower
③262	29747B	2	Screw
③264A	650738	1	Screw
③265	37086	1	Cover-Cylinder Head
③266	650876	2	Screw
③269	35762	2	Gasket-Exhaust
③270	37263	1	Manifold
③270A	35829A	1	Liner-Exhaust Port
③271	35293	1	Plate-Locking
③275	37264	1	Muffler
③276	35348	1	Plate-Lock
③277	650877	2	Screw
③279	651011	4	Screw
③280	37265	1	Shield-Heat
③285	35985B	1	Cup-Starter
③287	29752	4	Nut And Lockwasher ASM
③290	30962	1	Line-Fuel
③290	29774	1	Line-Fuel
③292	26460	1	Clamp-Fuel Line
③295	35857	1	Fuel Shut-Off Valve (Incl. Ref. #292)
③298	650665	2	Screw, 1/4-15 X 3/4"
③300	37099	1	Fuel Tank (Incl. Ref.#292 & 301)
③301	36246	1	Cap-Fuel
③302	37098	1	Extension-Tank, Fuel
③302A	650821	3	Screw

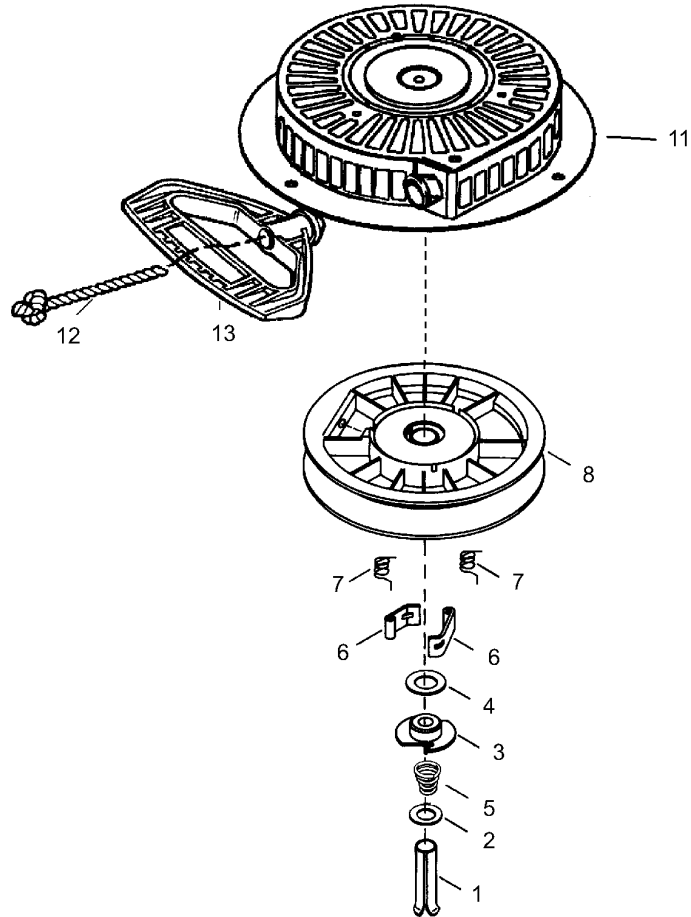
Ref	Part No.	Qty.	Description
③305	35574	1	Tube-Oil Fill
③307	35499	1	O-Ring
③308	35539	1	Clip
③310	35700	1	Dipstick
③314	650873	1	Screw, 1/4-20 X 3/4"
③315	611111	1	Alternator Coil ASM (Incl. Ref. #323)
③328	35062	2	Keys-Ignition
③329	610973	1	Terminal
③335	37096	1	Spring
③335A	37087	1	Screw
③338	650821	4	Screw
③341	37093	1	Bracket-Fuel Tank
③342	792028	2	Screw
③343	35079	1	Bracket-Switch, Key
③343A	651060	1	Screw, 10-32 X 23/64"
③345	37097	1	Baffle-Heat
③345A	650821	1	Screw
③350	570682A	1	Primer Assembly
③351	32180C	1	Line-Primer
③355	590574	1	Handle-Grip, Mitten
③361	650990	2	Screw, T-30 1/4-20 X 15/32"
③369	651032	2	Screw, 12-16 X 5/8"
③370C	36501	1	Decal-Primer
③370H	37226	1	Decal-Choke
③370I	37119	1	Decal-Warning
③370K	36695	1	Decal-Starter
③380	640169	1	Carburetor (Incl. Ref.# 184)
③390	590749	1	Rewind Starter (Note: This Engine Could Have Been Built With 590733 Starter.)
③396	33329E	1	120 Volt Electric Starter Motor ASM
③400	37257A	1	Gasket Set
③420	730226A	1	Sae 5w30 4-Cycle Engine Oil (Quart)
③	756339B	1	Shortblock



Electric Starter (110 Volt) Part No. 33329Eà

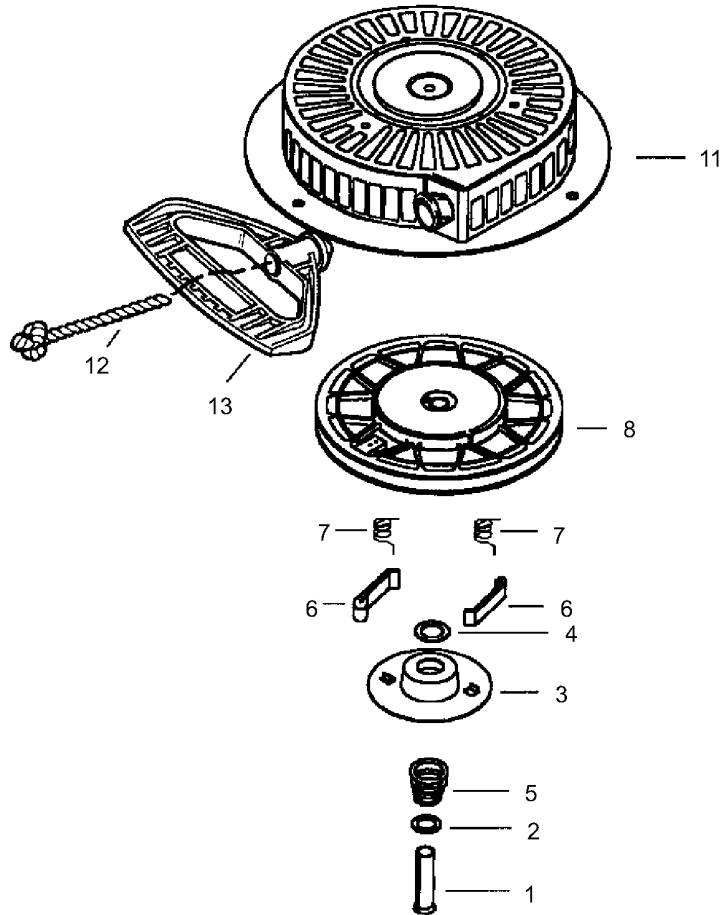
Ref	Part No.	Qty.	Description
❶	33451	1	Dust Cover
❷	33842	1	Retainer Ring
❸	33430	1	Spring Retainer
❹	33431	1	Anti-Drift Spring
❺A	37050	1	Gear & Nut (Incl. Ref.# 2)
❻	35449	1	Drive End Cap ASM (Incl. Ref. #7)
❼	35450	2	O-Ring
❽	35915	1	Armature
❾	35451B	1	Housing ASM
❿	35452A	1	Brush Card ASM
⓫	35911	1	Thrust Washer
⓬	590500	1	Thrust Washer
⓭	33441	1	Ground Screw
⓮	35453	1	Commutator End Cap ASM (Incl. Ref. #7)
⓯	35454	1	Switch Box ASM
⓰	35455	2	Case Bolt
⓱	35456	1	Ground Screw
⓴	650819	2	Screw
⓴	651032	2	Screw, 12-16 X 5/8"
⓶	32450B	1	Extension Cord
⓷	30063	2	Screw, Torx T-30, 1/4-20 X 1/2"
⓸	650820	2	Screw, 1/4-20 X 1/2"

--	--	--	--



Recoil Starter Part No. 590749à

Ref	Part No.	Qty.	Description				
1	590599A	1	Spring Pin (Incl. Ref.# 4)				
2	590600	1	Washer				
3	590679	1	Retainer				
4	590601	1	Washer				
5	590678	1	Brake Spring				
6	590680	2	Starter Dog				
7	590412	2	Dog Spring				
8	590682	1	Pulley & Rewind Spring ASM				
11	590750A	1	Starter Housing ASM				
12	590535	1	Starter Rope (Length 98" X 9/64" Dia)				
13	590574	1	Handle-Grip, Mitten				



Rewind Starter Part No. 590733à

Ref	Part No.	Qty.	Description				
1	590599A	1	Spring Pin (Incl. Ref.# 4)				
2	590600	1	Washer				
3	590696	1	Retainer				
4	590601	1	Washer				
5	590697	1	Brake Spring				
6	590698	2	Starter Dog				
7	590699	2	Dog Spring				
8	590709	1	Pulley And Rewind Spring ASM				
11	590734A	1	Starter Housing ASM				
12	590535	1	Starter Rope (Length 98" X 9/64" Dia)				
13	590574	1	Handle-Grip, Mitten				

NOTES

NOTES

NOTES

