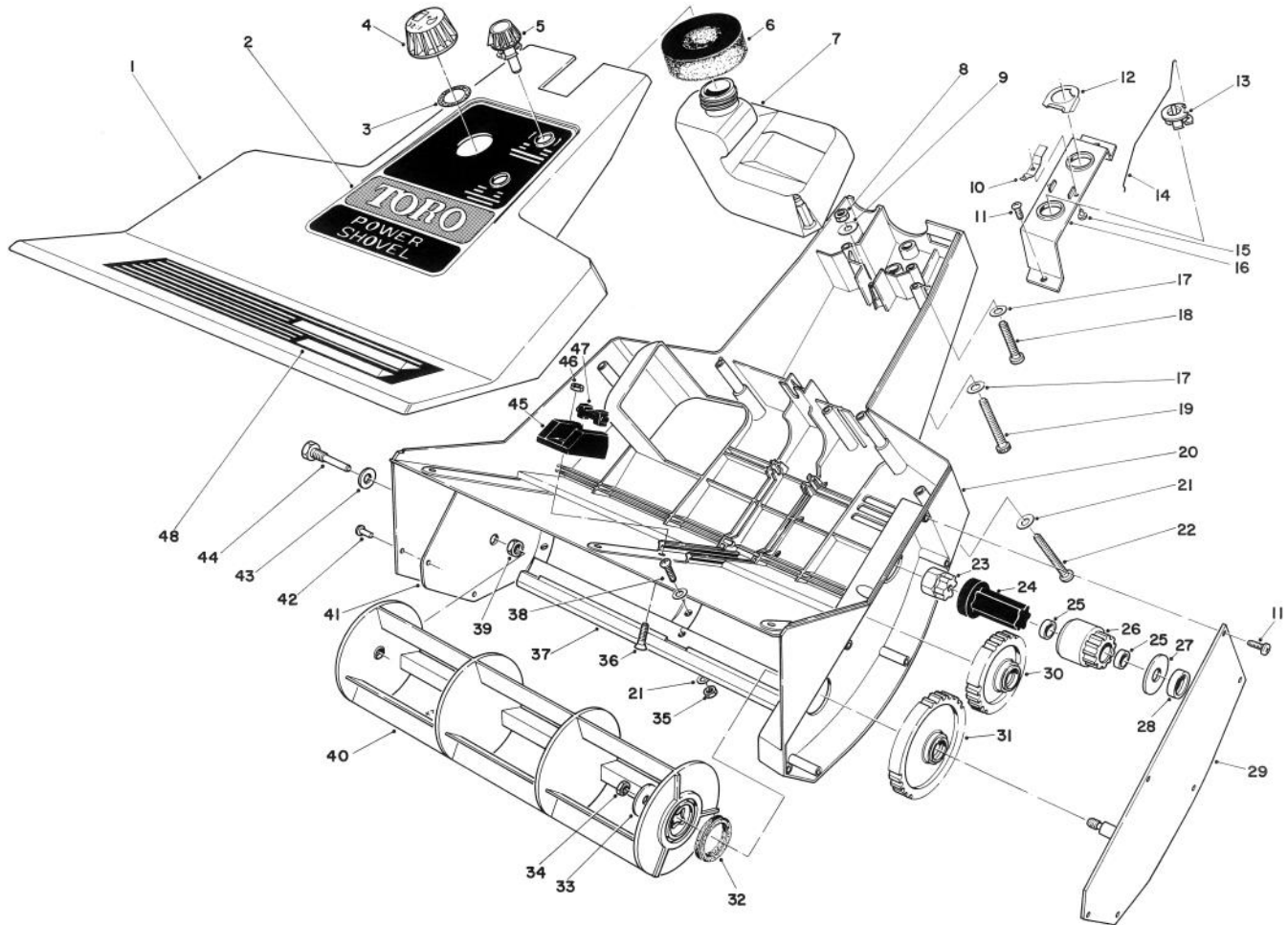




MODEL NO. 38350 — 4000001  
THRU 5000001 & UP

## PARTS CATALOG

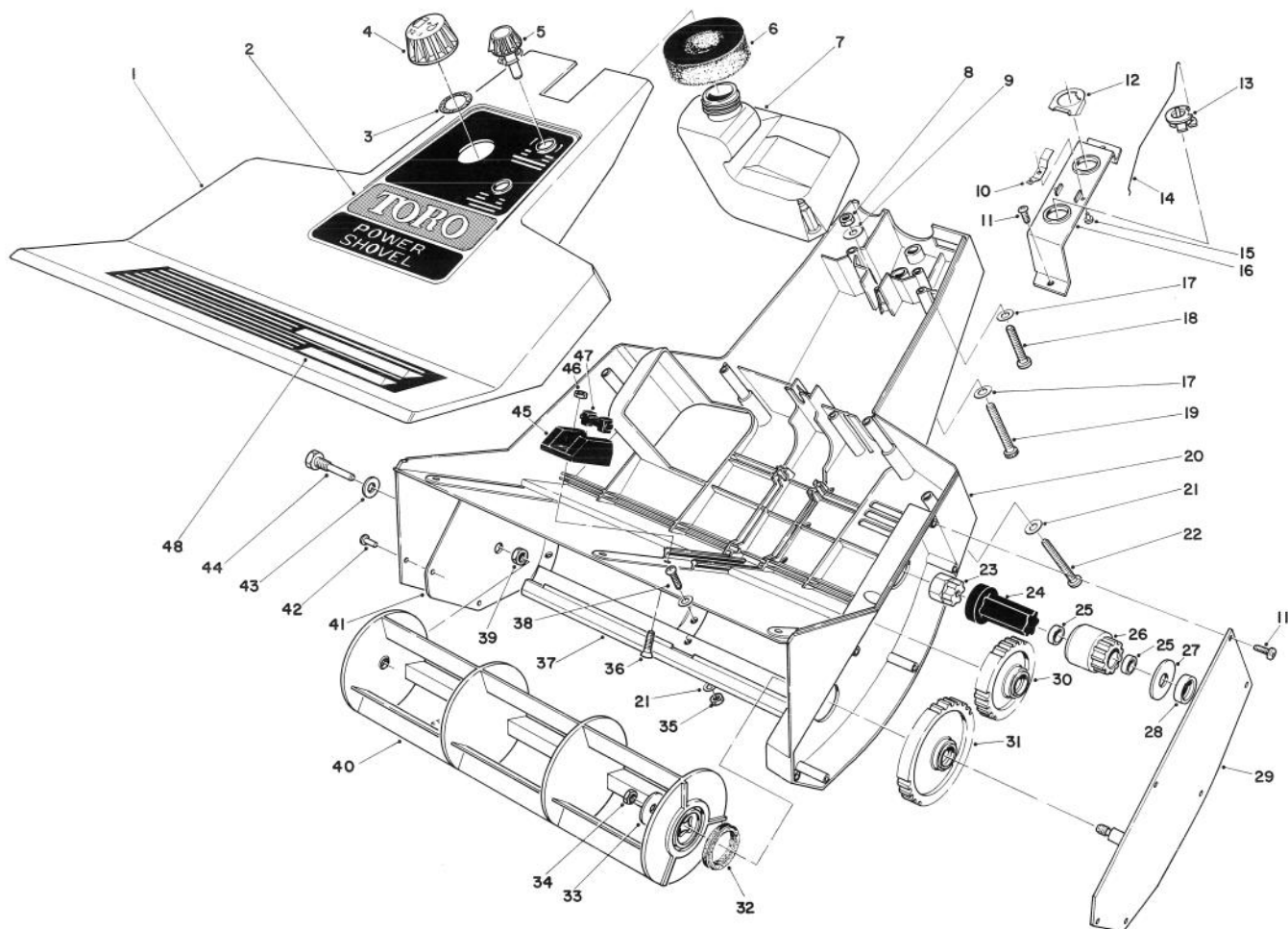
### TORO GAS POWER SHOVEL



### ROTOR HOUSING ASSEMBLY

Ref. No.	Part No.	Description	No. Used
1	11-3359	Insert — Shroud Assembly (Incl. Ref. #48)	1
2	44-3150	Decal Controls	1
3	42-5910	Gasket — Gas Cap	1
4	52-3610	Gas Cap Assembly (Incl. Ref. #3)	1
5	44-2800	Knob — Control	2
6	25-1610	Pad — Foam	1
7	44-2950	Tank — Gas	1
8	3296-42	Nut — Lock	2
9	3-7501	Washer	2
10	46-6750	Contact Switch	2
11	32104-118	Screw — Self Tapping	8
12	46-6760	Actuator Switch	1
13	44-2810	Control Lower	2

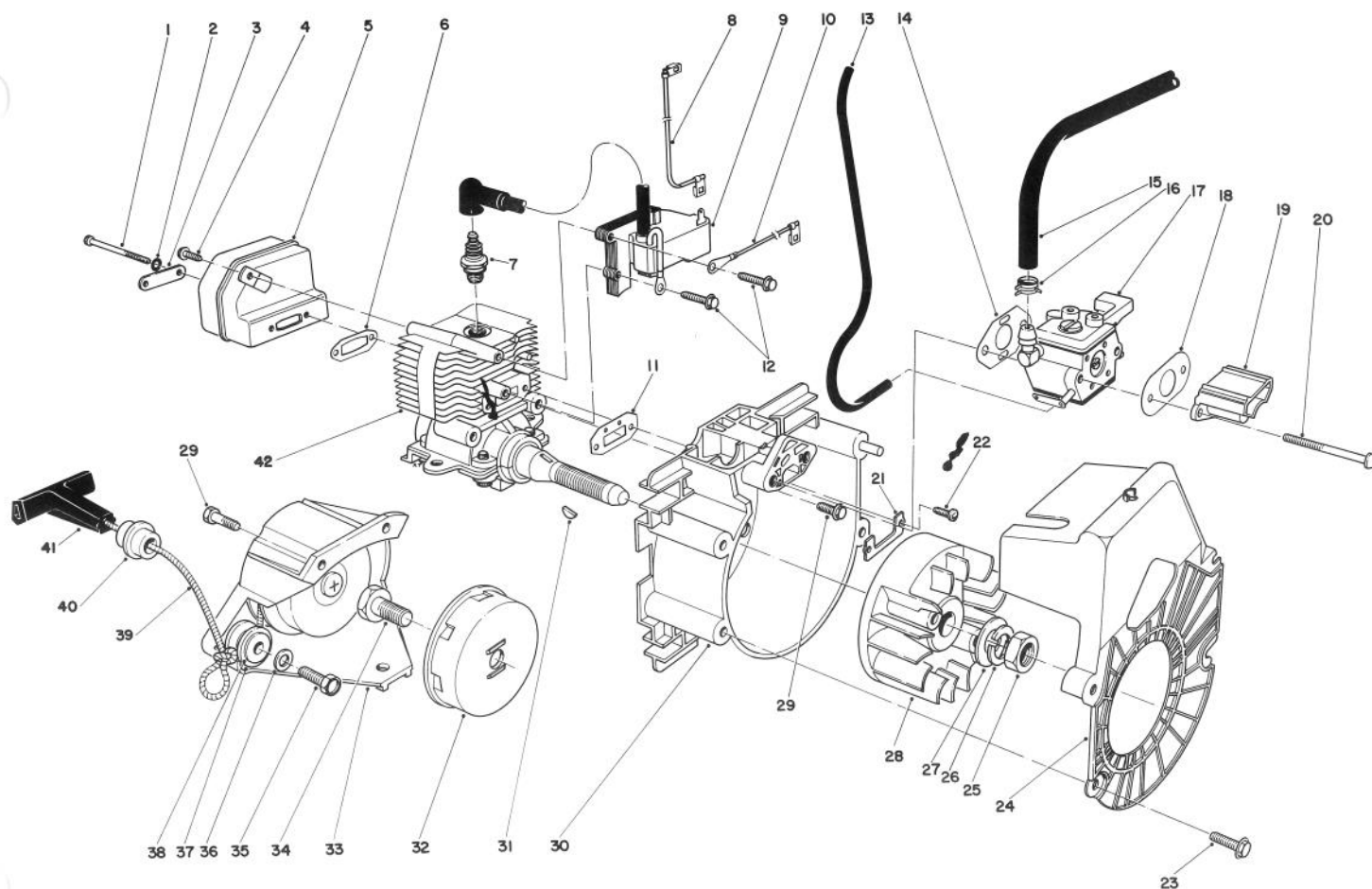
Ref. No.	Part No.	Description	No. Used
14	46-2000	Linkage Choke	1
15	3290-56	Rivet	2
16	44-2770	Bracket — Controls	1
17	3256-16	Washer — Plain	2
18	3274-58	Screw — Cap Hex Socket Hd.	1
19	3274-60	Screw — Cap Hex Socket Hd.	1
20	46-5990	Housing (Incl. Ref. #41 & 42)	1
21	3256-51	Washer — Plain	9
22	32105-6	Screw — Machine Slotted Hex Hd.	6
23	44-2890	Adapter — Crankshaft	1
24	38-8570	Coupling — Drive	1
25		Bearing	2
26	44-2820	Gear Assembly — Drive (Incl. Ref. #25)	1



## ROTOR HOUSING ASSEMBLY (Continued)

Ref. No.	Part No.	Description	No. Used
27	5-0737	Washer — Thrust	1
28	44-3080	Spacer Gear	1
29	49-1700	Gear Carrier Plate	1
30	44-2780	Gear Assembly — Idler	1
31	44-2740	Gear Assembly — Rotor	1
32	44-2710	Washer — Felt	1
33	3256-58	Washer — Plain Flat	1
34	3296-56	Nut — Lock	1
35	3296-54	Nut — Lock	3
36	32108-98	Screw — Machine Slotted Flat Hd.	4
37	44-2960	Scraper	1

Ref. No.	Part No.	Description	No. Used
38	32122-53	Screw — Machine Truss Hd.	3
39	32146-21	Nut — Jam Locking	1
40	44-2730	Rotor	1
41		Plate Housing Reinforcement	1
42	3290-55	Rivet	2
43	3256-24	Washer Plain	1
44	38-8210	Pin — Rotor	1
45	44-3090	Mount — Engine Upper	1
46	3296-2	Nut — Lock	1
47	44-2860	Mount — Rubber Isolator	4
48	44-3160	Decal — Warning	1

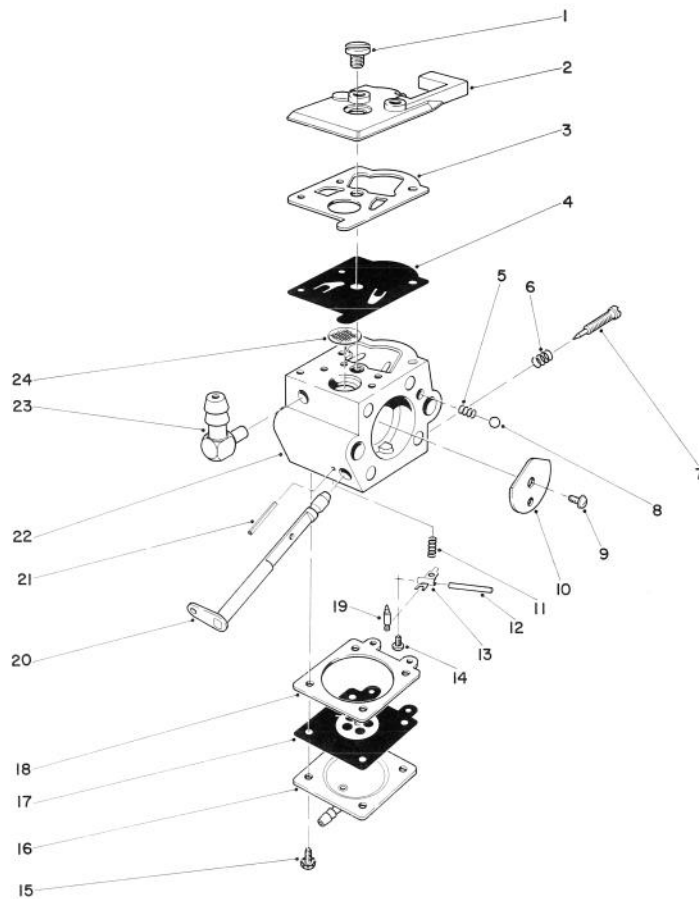


## ENGINE ASSEMBLY

Ref. No.	Part No.	Description	No. Used
1	45-2380	Screw, Muffler	2
2	45-2960	Lockwasher	2
3	45-0410	Stress Plate, Muffler	1
4	45-2370	Screw, Muffler Tab	1
5	45-2510	Muffler Assembly	1
6	45-1950	Gasket, Exhaust	1
7	45-2860	Spark Plug	1
8	45-2340	Wire Assembly — Coil	1
9	45-2290	C D I Module, Speed Limiting	1
10	45-2330	Wire Assembly — Ground	1
11	45-2990	Gasket, Intake	1
12	45-0640	Screw, C D I Mount	2
13	44-3170	Hose, Primer	1
14	45-3060	Gasket, Carburetor	1
15	44-2910	Hose Fuel	1
16	2412-80	Clamp, Fuel Line	2
17	45-2360	Carburetor	1
18	45-2350	Gasket, Choke/Spitback Cup	1
19	45-2260	Spit Back Cup	1
20	45-2400	Screw, Carburetor	2
21	45-0540	Plate, Stress	1
22	45-2140	Screw, Intake	2

Ref. No.	Part No.	Description	No. Used
23	45-0630	Screw, Shroud	3
24	45-1851	Cooling Shroud	1
25	3220-5	Nut, Flywheel	1
26	45-2980	Lockwasher — Flywheel	1
27	45-2280	Washer, Flywheel	1
28	45-1670	Flywheel	1
29	45-0710	Screw	6
30	45-2021	Backing Plate Assembly	1
31	45-0470	Key, Flywheel	1
32	45-2150	Cup, Starter	1
33	45-1480	Starter Assembly (Incl. Ref. #35-41)	1
34	45-2320	Screw, Starter Cup	1
35	45-2820	Screw, Idler Pulley	1
36	45-2830	Washer, Brake	1
37	45-2840	Idler Pulley (Incl. Ref. #38)	1
38		Bushing	1
39	45-3040	Rope Starter	1
40	44-2850	Guide. Rope	1
41	38-6570	Handle	1
42	45-2270	Short Block	1
*	45-2110	Insert, Threaded	2

\*Not Illustrated



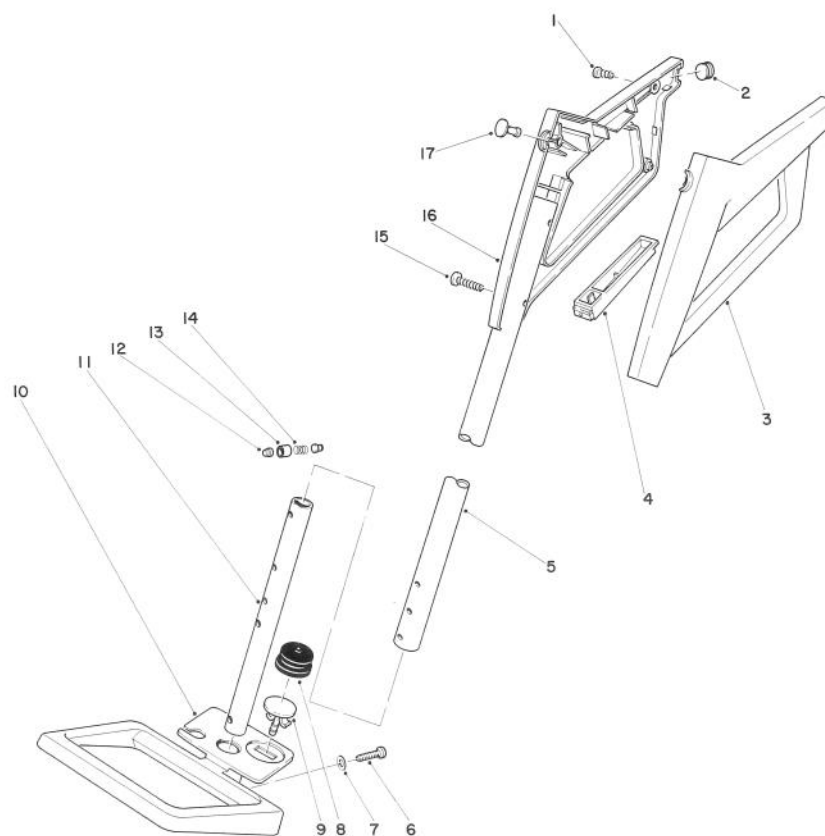
## CARBURETOR ASSEMBLY NO. 45-2360

Ref. No.	Part No.	Description	No. Used
1	45-2650	Pump Cover Screw	1
2	45-2660	Pump Cover	1
3	45-2670	Pump Gasket	1
4	45-2680	Pump Diaphragm	1
5	45-2740	Choke Friction Spring	1
6	45-2770	High Speed Needle Adj. Spring	1
7	45-2760	High Speed Needle	1
8	45-2750	Choke Friction Ball	1
9	45-2780	Valve Screw	2
10	45-2790	Choke Valve	1
11	45-2800	Metering Lever Spring	1
12	41-1020	Metering Lever Pin	1
13	41-0880	Metering Lever	1
14	41-1030	Metering Lever Pin Screw	1

Ref. No.	Part No.	Description	No. Used
15	41-1070	Metering Diaphragm Screw	4
16	45-2730	Metering Diaphragm Cover	1
17	41-1050	Metering Diaphragm Assy.	1
18	45-2720	Metering Diaphragm Gasket	1
19	45-2810	Inlet Needle Valve	1
20	45-2710	Choke Shaft Assembly	1
21†		Roll Pin	1
22†		Carburetor Body (Incl. Ref. #21)	1
23	45-2690	Fuel Fitting	1
24	46-4720	Inlet Screen	1
*	45-3030	Carburetor Repair Kit (Incl. Ref. #3-9, 11-14, 17-19 & 24)	1

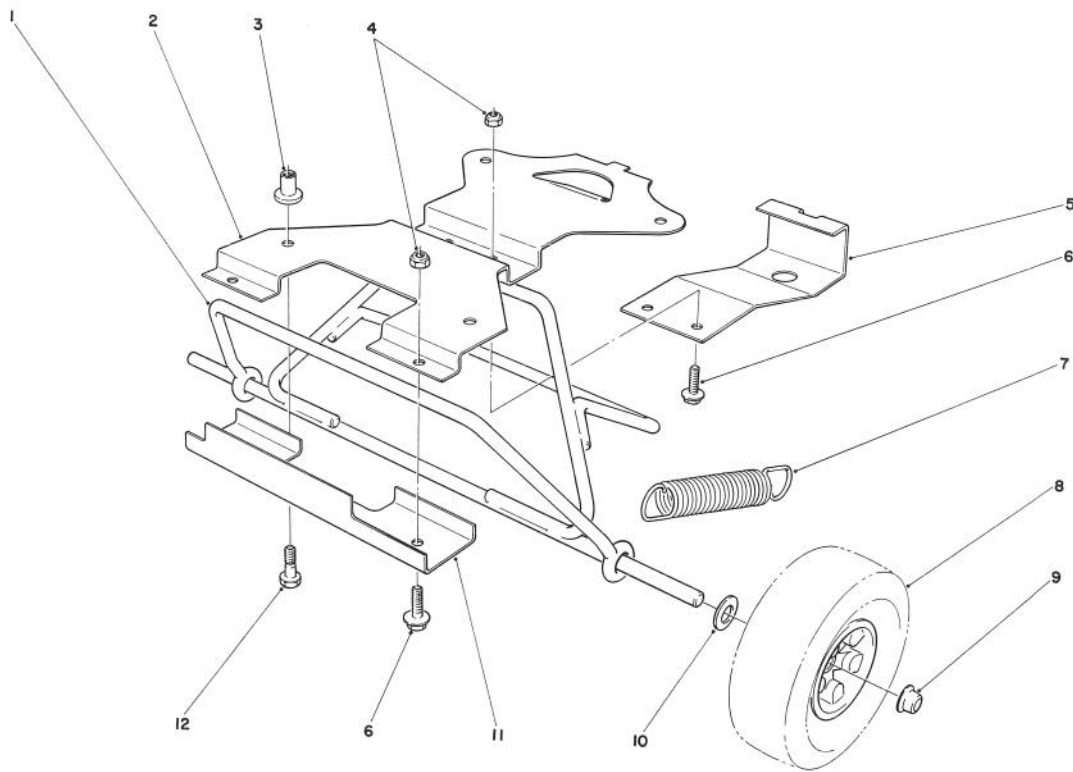
\*Not Illustrated.

†Not available, order complete carburetor assembly 45-2360.



## HANDLE ASSEMBLY

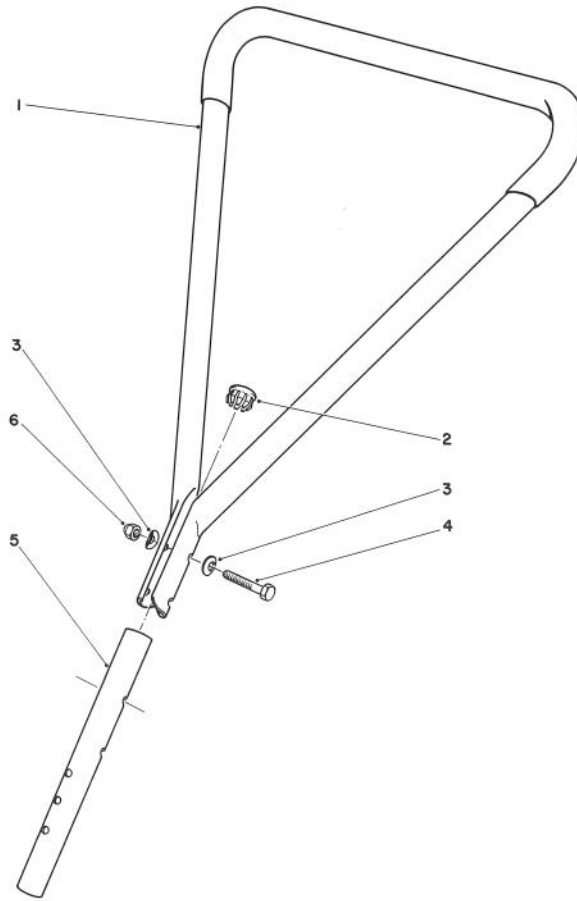
Ref. No.	Part No.	Description	No. Used	Ref. No.	Part No.	Description	No. Used
1	32104-118	Screw Self-Tapping Cross Recess Pan Hd.	2	9	44-2750	Body — Primer	1
2	46-5940	Plug — Cord	1	10	44-3110	Insert Handle Assembly	1
3	42-0040	Grip — Control L.H.	1	11	44-2970	Tube — Handle, Mounting	1
4	46-6500	Cover Handle	1	12	46-6950	Release Handle	2
5	44-2980	Tubing — Upper Handle	1	13	46-7520	Sleeve Release	1
6	32105-5	Screw — Machine Slotted Hex Hd.	2	14	46-6960	Spring — Compression	1
7	3256-51	Washer — Plain	2	15	32104-121	Screw — Self Tapping Cross Recess Pan Hd.	3
8	44-3100	Bulb — Primer	1	16	42-0030	Grip — Control R.H.	1
				17	46-6490	Plug Key	1



## WHEEL KIT MODEL NO. 59162 (Optional)

Ref. No.	Part No.	Description	No. Used
1	52-9830	Axle Assembly	1
2	52-9730	Plate — Wheel	1
3	52-9770	Wellnut	4
4	3296-12	Nut — Lock	4
5	52-9740	Cover	1
6	3290-144	Screw — Hex Washer Hd.	4

Ref. No.	Part No.	Description	No. Used
7	52-9760	Spring — Extension	2
8	37-5960	Wheel Assembly	2
9	32112-1	Nut — Push	2
10	3256-23	Washer — Flat	2
11	52-9750	Retainer — Axle	1
12	52-9780	Screw — Mounting	4



## HANDLE KIT MODEL NO. 59164 (Optional)

Ref. No.	Part No.	Description	No. Used
1	52-9850	Tube — Handle	1
2	52-9860	Closure — Tube	1
3	3-7501	Washer — Curved	4

Ref. No.	Part No.	Description	No. Used
4	321-37	Screw — Hex. Hd.	2
5	52-9840	Tube — End	1
6	32111-7	Nut — Cap Lock	2



# The Toro Promise

## A TWO YEAR LIMITED WARRANTY

*The Toro Company promises to repair your TORO Product if defective in materials or workmanship. The following time periods from the date of purchase apply:*

Residential Product . . . . . 2 Year  
Residential Products Used Commercially . . . 45 Days

*The costs of parts and labor are included, but the customer pays the transportation costs. Just return any residential product to an Authorized TORO Service Dealer or TORO Distributor.*

Should you feel your TORO Product is defective and wish to rely on The Toro Promise, the following procedure is recommended:

1. Contact any Authorized TORO Service Dealer, TORO Master Service Dealer, or TORO Distributor (the Yellow Pages of your telephone directory is a good reference source).
2. He will either instruct you to return the product to him or recommend another Authorized TORO Service outlet which might be more convenient.
3. Bring the product along with your original sales slip, or other evidence of purchase date, to the service dealer.
4. The servicing dealer will inspect the unit, advise you whether the product is defective and, if so, make all repairs necessary to correct the defect without extra charge to you.

If for any reason you are dissatisfied with the dealer's analysis of the defect or the service performed, you may contact us.

Write:

TORO Consumer Service Department  
8111 Lyndale Avenue South  
Minneapolis, Minnesota 55420

The above remedy of product defects through repair by an Authorized TORO Service Dealer is the purchaser's sole remedy for any defect.

THERE IS NO OTHER EXPRESS WARRANTY. ALL IMPLIED WARRANTIES OF MERCHANTABILITY AND FITNESS FOR USE ARE LIMITED TO THE DURATION OF THE EXPRESS WARRANTY.

Some states do not allow limitations on how long an implied warranty lasts, so the above limitation may not apply to you.

This warranty applies only to parts or components which are defective and does not cover repairs necessary due to normal wear, misuse, accidents, or lack of proper maintenance. Regular, routine maintenance of the unit to keep it in proper operating condition is the responsibility of the owner.

All warranty repairs reimbursable under The Toro Promise must be performed by an Authorized TORO Service Dealer using Toro approved replacement parts.

Repairs or attempted repairs by anyone other than an Authorized TORO Service Account are not reimbursable under The Toro Promise. In addition, these unauthorized repair attempts may result in additional malfunctions, the correction of which is not covered by warranty.

THE TORO COMPANY IS NOT LIABLE FOR INDIRECT, INCIDENTAL OR CONSEQUENTIAL DAMAGES IN CONNECTION WITH THE USE OF THE PRODUCT INCLUDING ANY COST OR EXPENSE OF PROVIDING SUBSTITUTE EQUIPMENT OR SERVICE DURING PERIODS OF MALFUNCTION OR NON-USE.

Some states do not allow the exclusion or limitation of incidental or consequential damages, so the above limitation or exclusion may not apply to you.

This warranty gives you specific legal rights, and you may also have other rights which vary from state to state.

### COUNTRIES OTHER THAN THE UNITED STATES OR CANADA

Customers who have purchased TORO products exported from the United States or Canada should contact their TORO Distributor (Dealer) to obtain guarantee policies for your country, province or state. If for any reason

you are dissatisfied with your Distributor's service or have difficulty obtaining guarantee information, contact the TORO importer. If all other remedies fail, you may contact us at The Toro Company.