



# Powered Twin Bagger

## TITAN® Zero-Turn-Radius Riding Mower

Model No. 79348—Serial No. 400000000 and Up

### Addendum

This *Addendum* replaces the existing Installing the Weights procedure in the *Operator's Manual* for the powered twin bagger. Store this document with the *Operator's Manual*.

# 1

## Installing the Weights

Parts needed for this procedure:

1	Left weight mount
1	Right weight mount
4	Bagger weight
6	Bolt (3/8 x 1 inch)
2	Bolt (3/8 x 2-3/4 inches)
2	Washer
8	Flange nut (3/8 inch)

## Procedure

### ⚠ CAUTION

The bagger changes the weight distribution of the machine. Operating the machine without the front weights may cause an unstable condition, which could result in a loss of control.

Ensure that the front weights are properly installed before operating the machine with the bagger attachment.

1. Use 6 bolts (3/8 x 1 inch) and locknuts (3/8 inch) to secure the left and right weight mounts to the front of the machine as shown in [Figure 1](#).

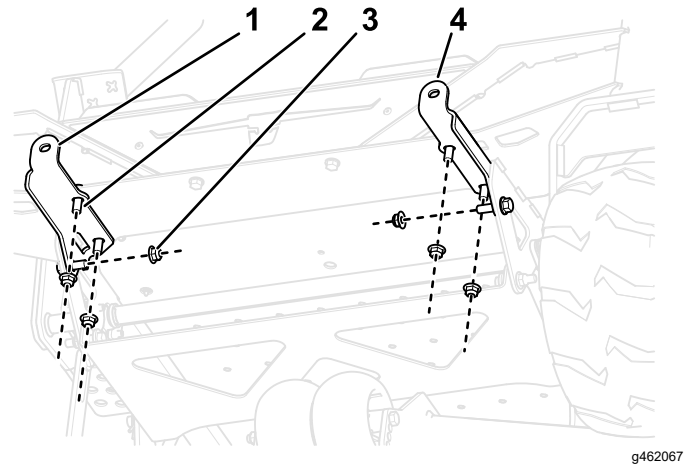


Figure 1

1. Right weight mount
2. Bolt (3/8 x 1 inch)
3. Locknut (3/8 inch)
4. Left weight mount

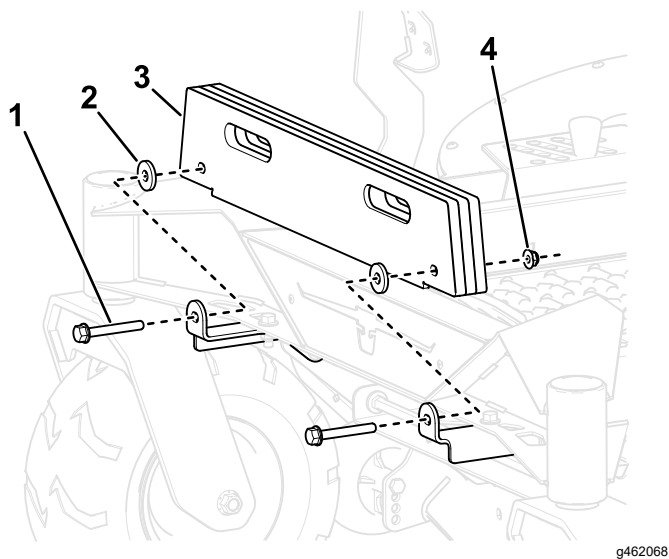
2. Install the bagger weights (amount determined by deck size) to the weight mounting brackets to the weight mounts with 2 bolts (3/8 x 2-3/4 inches), washers, and locknuts (3/8 inch) as shown in [Figure 2](#).

Titan models	
Deck Size	Weights Required
48-inch	3
54-inch	2
60-inch	1

Titan Max models	
Deck Size	Weights Required
60-inch	4

**Important:** Adjust the amount of weight according to the size of the mower deck.





**Figure 2**

- |                              |                       |
|------------------------------|-----------------------|
| 1. Bolt (3/8 x 2-3/4 inches) | 3. Bagger weights     |
| 2. Washer                    | 4. Locknut (3/8 inch) |
-