



826LE Power Max Snowthrower

Model No. 38621 - 240000001 and up.

Parts Catalog

Ordering Replacement Parts

To order replacement parts, please supply: the part number, the quantity, and the description of each part desired.

Understanding Reference Numbers

Each identified part in an illustration has a reference number. The reference number for a part also appears in the parts list, along with other information about the part.

This catalog uses two special reference number formats, one to indicate parts in a service assembly and another to indicate the quantity of a given part in an illustration.

Service Assembly Reference Numbers

Parts in service assemblies have reference numbers in the form **a:b**. The **a** represents the reference number of the entire service assembly and the **b** represents a sequential number unique to each part within the service assembly.

For example, a wheel assembly might be identified by reference number 6, the tire by **6:1**, the valve by **6:2**, and the wheel by **6:3**. When you order the assembly identified by reference number 6, you receive all parts identified by reference numbers 6:1, 6:2, and 6:3. However, you may also order any part individually. Reference numbers of this type appear in illustrations and in part lists.

Reference Numbers Indicating Quantity

In an illustration, if a reference number indicates more than one part, the reference number has the form **nX y**. The **n** represents the quantity of the part, the **X** is the multiplication symbol, and the **y** represents the reference number.

For example, in an illustration, the reference number **2X 37** means that two of the parts identified by reference number 37 are indicated.

Part Description Abbreviations

Part descriptions in this catalog may include the following abbreviations.

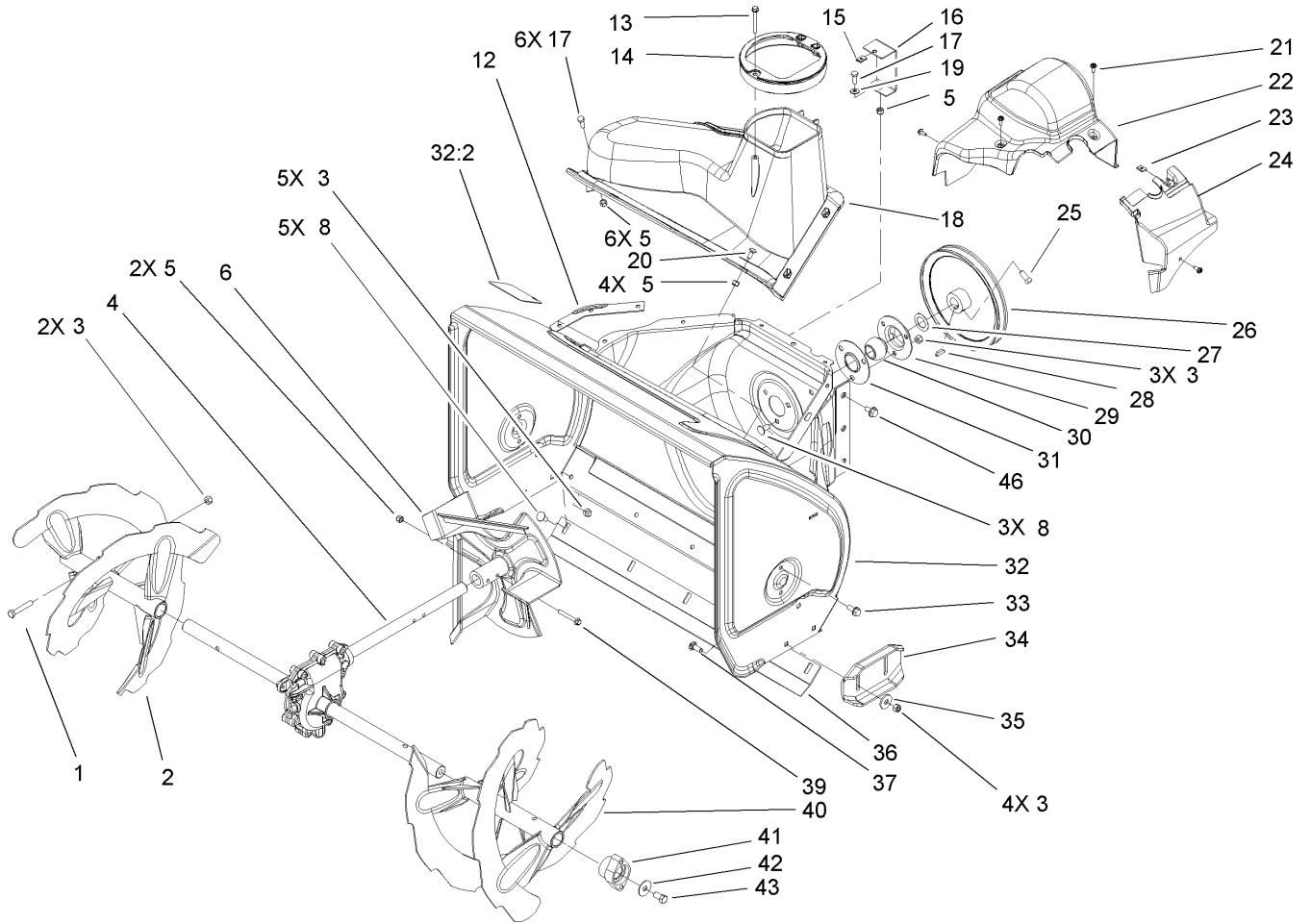
AR.	as required	HYD.	hydraulic
ASM.	assembly	INC.	incorporated
CARR.	carriage	LH.	left hand
DEG.	degrees	NI.	nylon insert
FH.	flat head	PPH.	phillips pan head
GA.	gauge	PTH.	phillips truss head
HF.	hex flange	PTO.	power take off
HH.	hex head	RH.	right hand
HHF.	hex head flange	SFH.	slotted fillister head
HHFTF.	hex head flange thread forming	SHH.	slotted hex head
HJ.	hex jam	SHWH.	slotted hex washer head
HLH.	hex lag head	SPH.	slotted pan head
HOC.	height-of-cut	SQH.	square head
HS.	hex	SRH.	slotted round head
HSBH.	hex socket button head	STD.	standard
HSFH.	hex socket flat head	TAP.	self tapping
HSH.	hex socket head	TTH.	torx truss head
HWH.	hex washer head	WH.	wing head
HWHTF.	hex washer head thread forming		

Footnotes

- ❶ Not illustrated
- ❷ Not serviced separately
- ❸ Obtain parts from your local Tecumseh dealer
- ❹ Included in Gasket Set 36450C

Contents

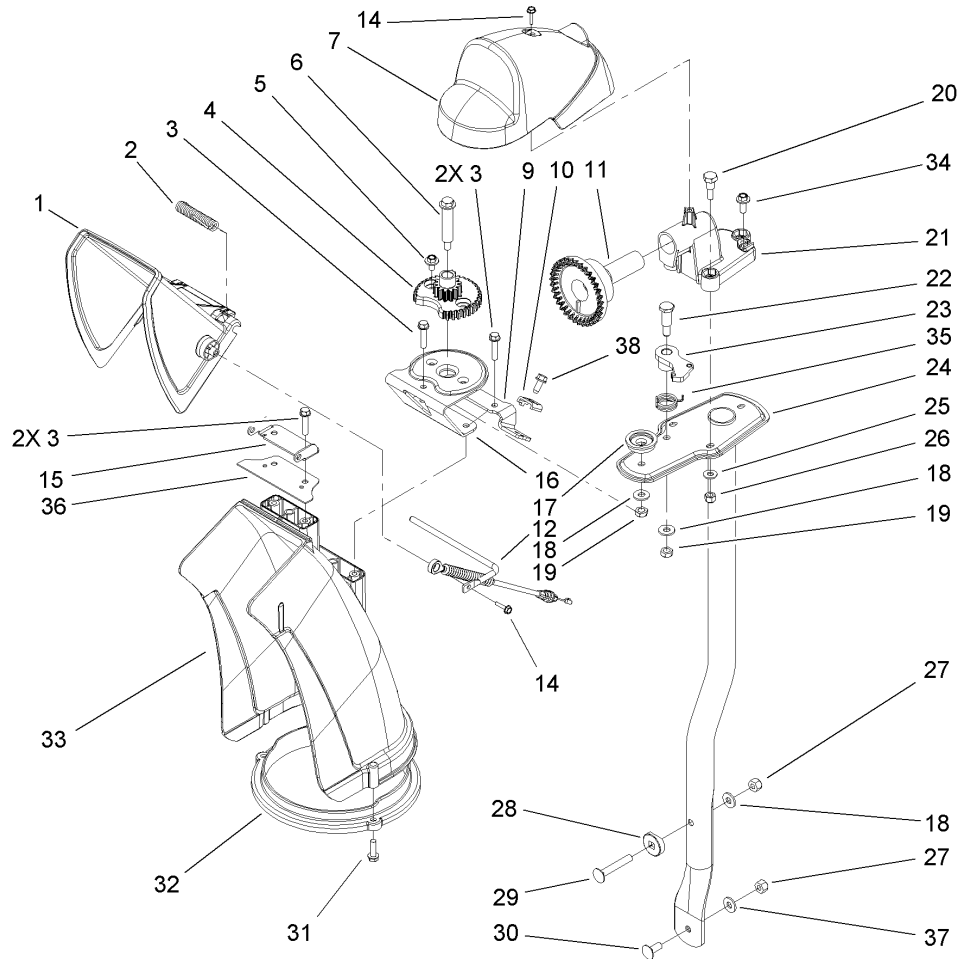
Description	Page	Description	Page
Auger and Housing Assembly 3	Engine Assembly No. 2 Tecumseh HMSK-80 155724X 16
Auger Gearcase Assembly No. 106-4580 4	Rewind Starter Assembly No. 590749 Tecumseh HMSK-80 155724X 18
Chute Assembly 5	Rewind Starter Assembly No. 590733 (Optional) Tecumseh HMSK-80 155724X 19
Chain Drive Assembly 6	220 Volt Electric Starter Assembly No. 37102 Tecumseh HMSK-80 155724X 20
Frame Assembly 7		
Handle and Control Assembly 9		
Handle and Control Assembly No. 2 10		
Chute Control Assembly 11		
Engine Assembly 12		
Carburetor Assembly No. 640052 Tecumseh HMSK-80 155724X 13		
Engine Assembly No. 1 Tecumseh HMSK-80 155724X 14		



Auger and Housing Assembly

Ref	Part No.	Qty.	Description
1	322-10	2	Screw-HH
2	106-7289-03	1	Auger-Rh, 26in
3	3296-29	14	Nut-Lock, NI
4	106-4580	1	26in Auger Gearcase ASM
5	3296-42	13	Nut-Lock, NI
6	106-4576-03	1	Impeller ASM
8	3230-23	8	Screw-CARR
12	107-1017-03	1	Seal-Cover Flange
13	107-3003	1	Screw-Plastite
14	107-3006	1	Guide-Chute
15	107-1013	1	Nut-Speed, U-Type
16	107-1014-03	1	Bracket-Cover, Clip Nut
17	321-4	7	Screw-HH
18	107-3007	1	Cover
19	3256-22	1	Washer-Flat
20	3229-1	4	Screw-CARR
21	32144-112	4	Screw-HWHTF
22	107-1001	1	Cover-Belt
23	701493	1	Nut-Speed
24	107-1016	1	Cover-Belt Extension
25	3242-4	2	Screw-Set, SQH
26	62-1300	1	Pulley-Impeller
27	252-80	1	Washer-Thrust
28	3257-23	1	Key-Woodruff

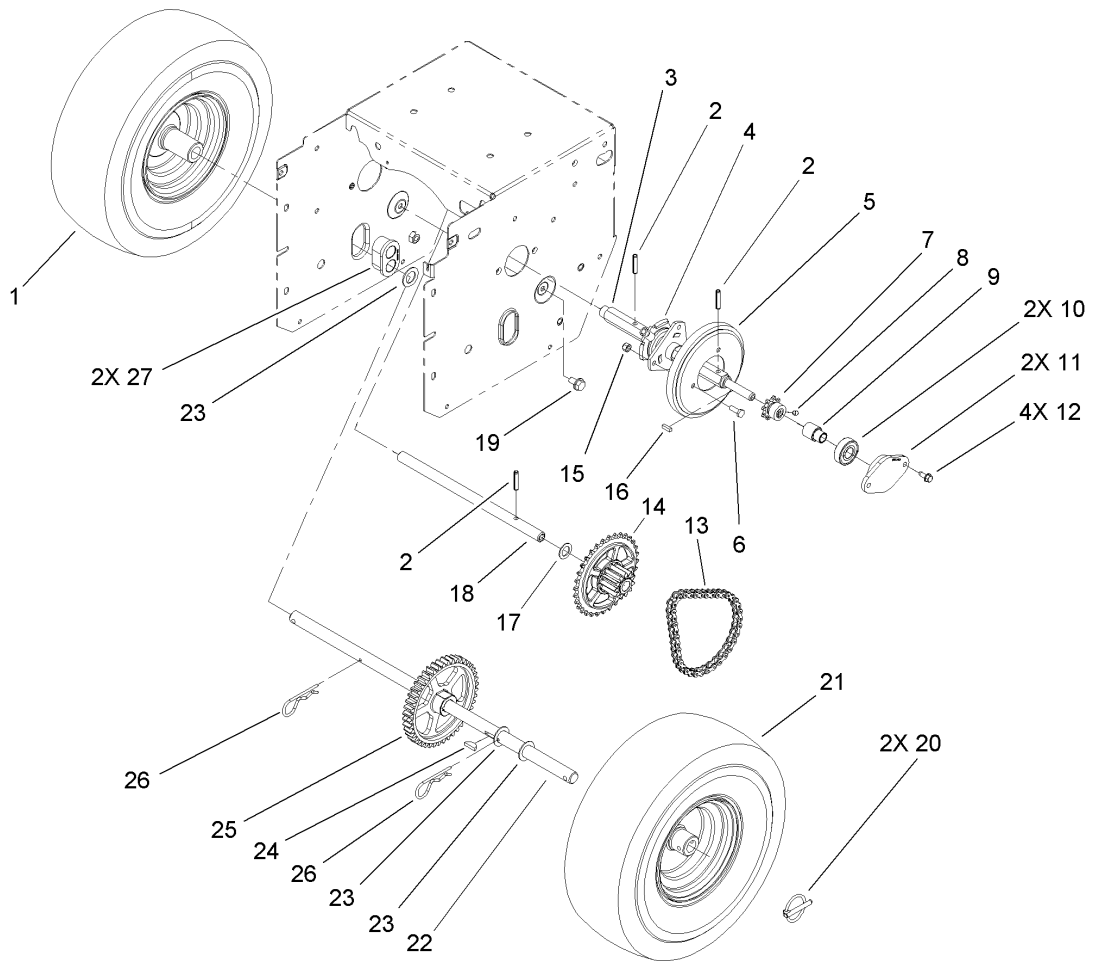
Ref	Part No.	Qty.	Description
29	26-6110	1	Flange-Cup, Bearing
30	63-3450	1	Bearing-Ball
31	26-6120	1	Flange-Cup, Bearing
32	107-3822	1	26in Auger Housing ASM
32:2	107-3040	1	Decal-Auger Danger
33	32144-70	4	Screw-HH
34	106-4588-01	2	Skid
35	52-2861	4	Washer
36	105-9976-01	1	Scraper-Fixed
37	3230-16	4	Screw-CARR
39	321-44	2	Screw-HHF
40	106-7299-03	1	26in LH Auger ASM
41	106-4570	2	Auger-Bearing
42	3-0750	2	Washer
43	323-4	2	Screw-HH
46	32144-14	6	Screw-HWH



Chute Assembly

Ref	Part No.	Qty.	Description
1	106-7309	1	Deflector-Chute, Ce
2	106-4594	1	Spring-Torsion
3	46-8092	5	Screw-Plastite
4	106-4472	1	Gear-Chute
5	46-6810	2	Screw And Washer ASM
6	100-9880	1	Bolt-Shoulder
7	106-4585	1	Cover-Gear, Chute
9	106-7296	1	Bracket-Cable, Clamp
10	106-7297	1	Clamp-Cable
11	106-4471	1	Gear-Face
12	107-1021	1	Rod-Deflector
14	98-1375	2	Screw-HWH
15	106-7266	1	Bracket-Deflector
16	106-4582-03	1	Bracket-Support, Chute
17	106-4422	1	Spacer-Chute
18	3256-2	3	Washer-Flat
19	3296-47	2	Nut-Lock, NI
20	106-7276	3	Screw-Shoulder
21	106-7257	1	Mount-Gear, Face
22	63-2650	1	Screw-Shoulder
23	106-4476	1	Latch-Chute
24	106-7253-03	1	Tube-Support
25	3256-22	3	Washer-Flat
26	3296-42	3	Nut-Lock, NI

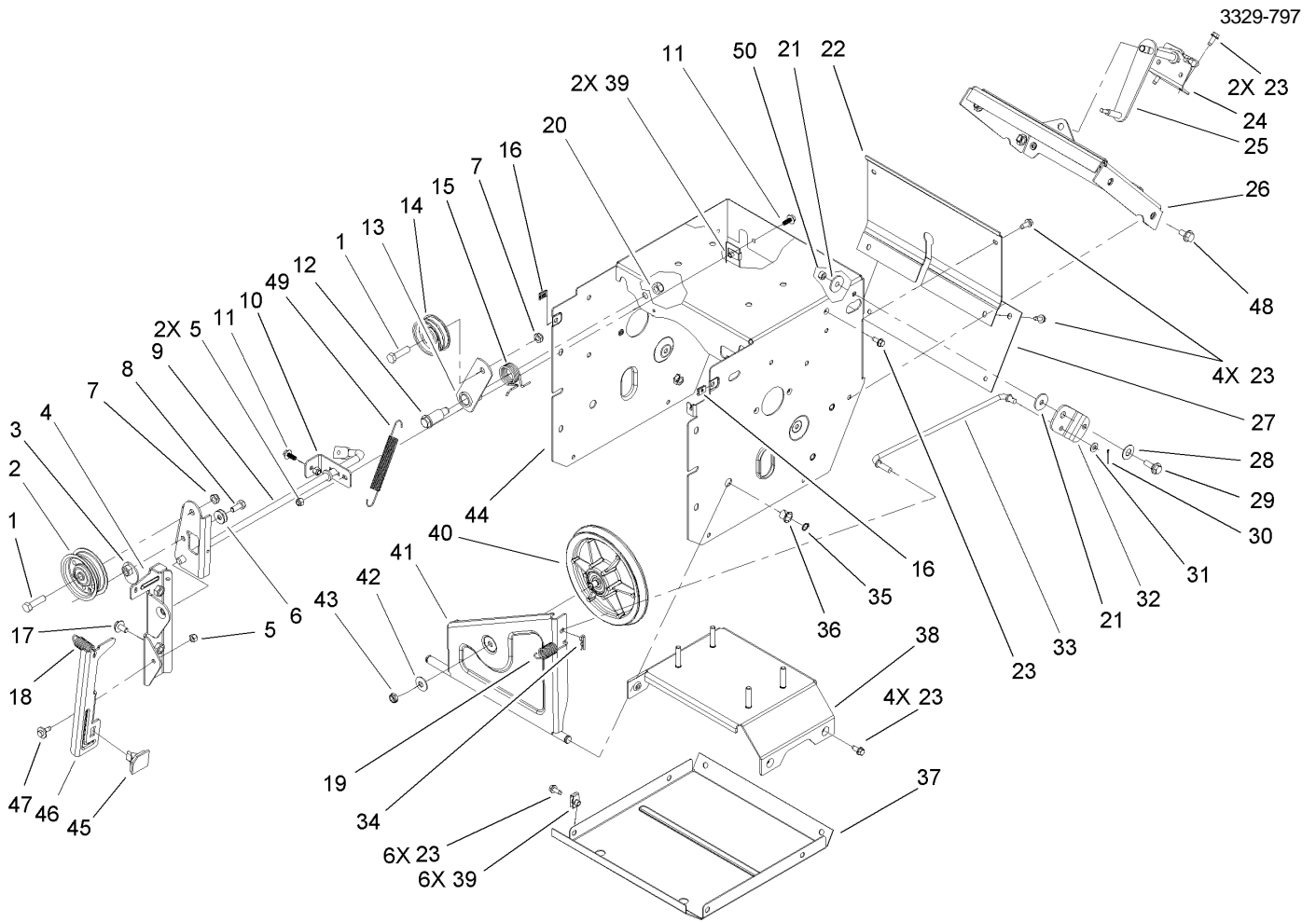
Ref	Part No.	Qty.	Description
27	3296-29	2	Nut-Lock, NI
28	106-7260	1	Washer-Curved
29	3230-5	1	Screw-CARR
30	3230-23	1	Screw-CARR
31	46-8091	3	Screw-HWH
32	105-9991	1	Ring-Chute
33	106-4440	1	Chute-Discharge
34	46-6811	1	Screw-HWH
35	106-4475	1	Spring-Torsion
36	107-1019	1	Seal-Chute
37	3290-456	1	Washer-Belleville
38	32144-10	1	Screw-HWH



Chain Drive Assembly

Ref	Part No.	Qty.	Description
1	107-3042	1	Tire
1	107-3043	1	Rim-Tire
2	32121-9	3	Pin-Spring
3	106-4593	1	Shaft-Hex, Chain
4	106-4434	1	Trunion-Hex
5	106-4480	1	Wheel-Friction
6	321-4	3	Screw-HH
7	106-7317	1	Sprocket-8 Tooth
8	3245-32	2	Screw-HS
9	106-7250	1	Spacer-Bearing, Sleeve
10	100-1048	2	Bearing-Ball
11	106-7308	2	Retainer-Bearing
12	32144-10	4	Screw-HWH
13	106-7293	1	Chain-Roller
13	2710-6	1	Link-Connecting
14	106-7261	1	Sprocket ASM
15	3296-42	3	Nut-Lock, NI
16	94-8850	1	Key-Square
17	107-3041	1	Washer-Flat
18	106-4592	1	Shaft-Intermediate
19	32144-14	2	Screw-HWH
20	107-3039	2	Klik Pin ASM
21	107-3042	1	Tire
21	107-3043	1	Rim-Tire

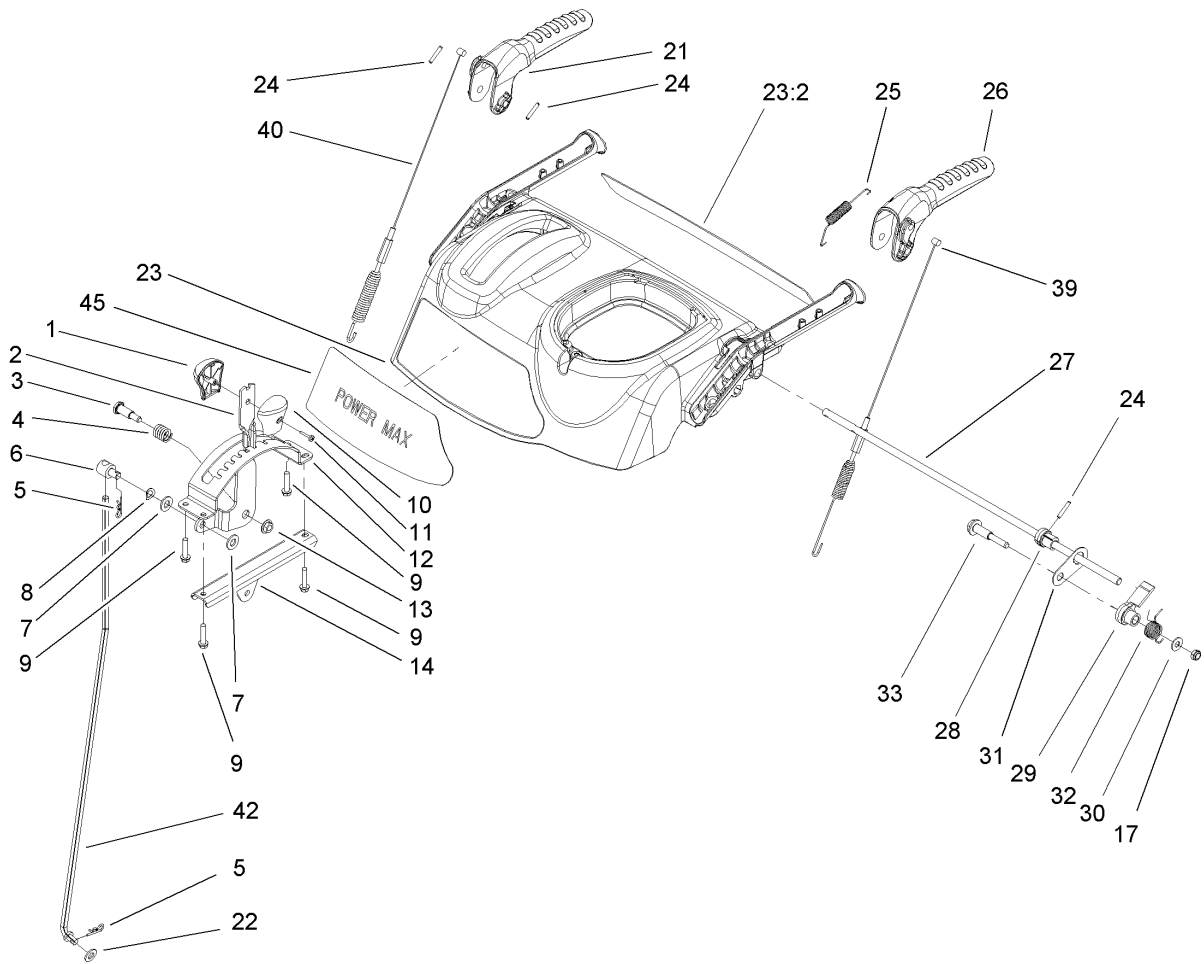
Ref	Part No.	Qty.	Description
22	106-4449	1	Shaft-Axle
23	3-8664	3	Washer-Thrust
24	3257-7	1	Key-Woodruff
25	106-4572	1	Gear-Axle, 44 Tooth
26	3290-343	2	Pin-Hair
27	106-4558	2	Bearing-Axle



Frame Assembly

Ref	Part No.	Qty.	Description
1	323-8	2	Screw-HH
2	92-7104	1	Pulley-Idler
3	107-1047	1	Nut ASM
4	107-1039	1	Bracket-Idler, Impeller
5	3296-42	3	Nut-Lock, NI
6	3290-456	1	Washer-Belleville
7	3296-59	2	Nut-Lock, NI
8	322-3	1	Screw-HH
9	106-7339-03	1	Auger Clutch ASM
10	106-7341	1	Bracket-Clutch Rear
11	99-6810	2	Screw-HH
12	107-1022	1	Bolt-Shoulder
13	106-7312	1	Arm-Idler, Traction
14	3-4244	1	Pulley-Idler
15	93-4816	1	Spring-Torsion, RH
16	107-1013	2	Nut-Speed, U-Type
17	3234-7	2	Screw-HHF
18	107-1045	1	Spring-Extension
19	107-1003	1	Spring-Extension
20	3296-76	1	Nut-Lock, NI
21	5-4460	2	Washer-Pivot
22	106-4556-01	1	Cover-Upper
23	32144-10	17	Screw-HWH
24	106-7325	1	Bracket-Shift Rod

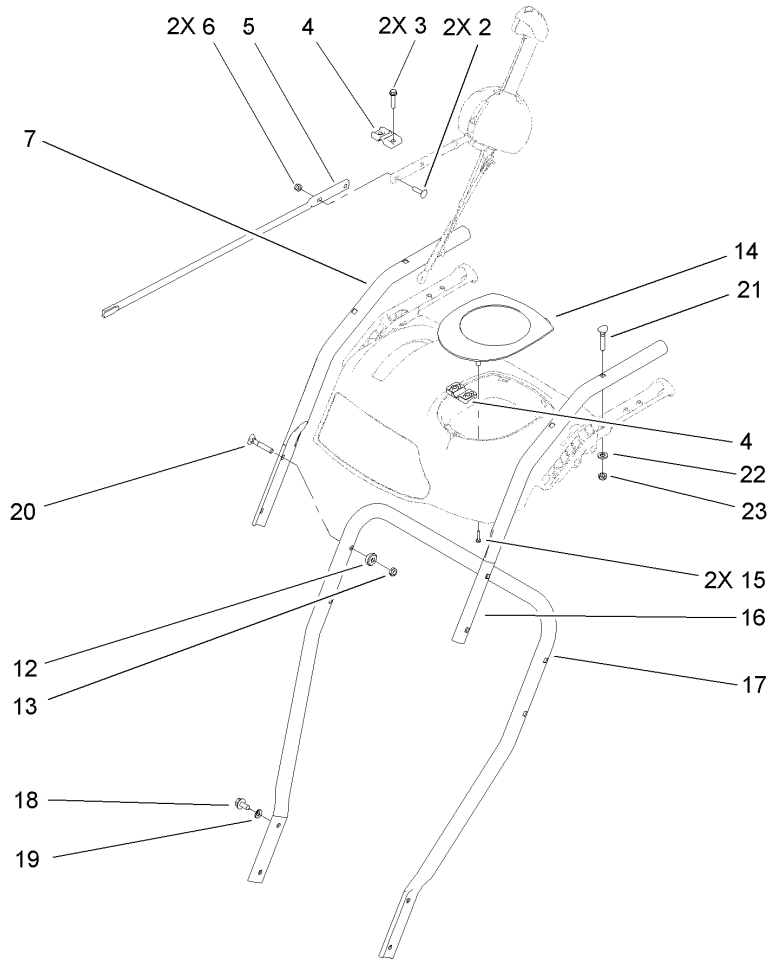
Ref	Part No.	Qty.	Description
25	106-7268	1	Lever-Control, Traction
26	106-7342-01	1	Shift Plate ASM
27	106-7345-01	1	Cover-Lower
28	25-5640	1	Washer
29	27-0410	1	Screw-Shoulder
30	3272-4	1	Pin-Cotter
31	3256-23	1	Washer-Flat
32	107-1011	1	Bellcrank-Drive
33	106-4467	1	Link-Control, Speed
34	3290-307	1	Pin-Hair
35	32151-61	2	Ring-Retaining
36	256-257	2	Bushing-Nyliner
37	106-7330-01	1	Pan-Bottom
38	106-7315	1	Brace Frame ASM
39	107069	8	Clip
40	106-4500	1	Pulley-Traction
41	106-7274	1	Pulley Pivot ASM
42	3290-340	1	Washer-Belleville
43	3296-5	1	Nut-Lock, NI
44	106-4495-01	1	Frame-Traction
45	66-8060	1	Pad-Brake
46	107-1000	1	Arm-Brake
47	92-9698	1	Screw-Shoulder
48	32144-14	4	Screw-HWH



Handle and Control Assembly

Ref	Part No.	Qty.	Description
1	106-4423	1	Knob-Shift, RH
2	106-7278-03	1	Selector-Speed
3	63-2650	1	Screw-Shoulder
4	107-3017	1	Spring-Compression
5	3290-307	2	Pin-Hair
6	101161	1	Trunnion
7	3256-24	2	Washer-Flat
8	612586	1	Washer-Spring
9	46-8092	4	Screw-Plastite
10	105-9999	1	Knob-Shift, LH
11	94-4496	1	Screw-PPH
12	106-7277-03	1	Guide-Selector, Speed
13	32128-13	1	Nut-HF
14	106-7279-03	1	Mount-Selector, Speed
17	3296-72	1	Nut-Lock, NI
21	106-4413	1	Lever-Auger
22	3256-38	1	Washer-Flat
23	107-3826	1	Control Panel ASM
23:2	106-4523	1	Decal-Control Panel Back
24	32121-125	3	Pin-Spring
25	107-3001	1	Spring-Tension
26	106-4410	1	Lever-Traction
27	105-9996	1	Rod-Lockout
28	107-1043	1	Cam-Lockout

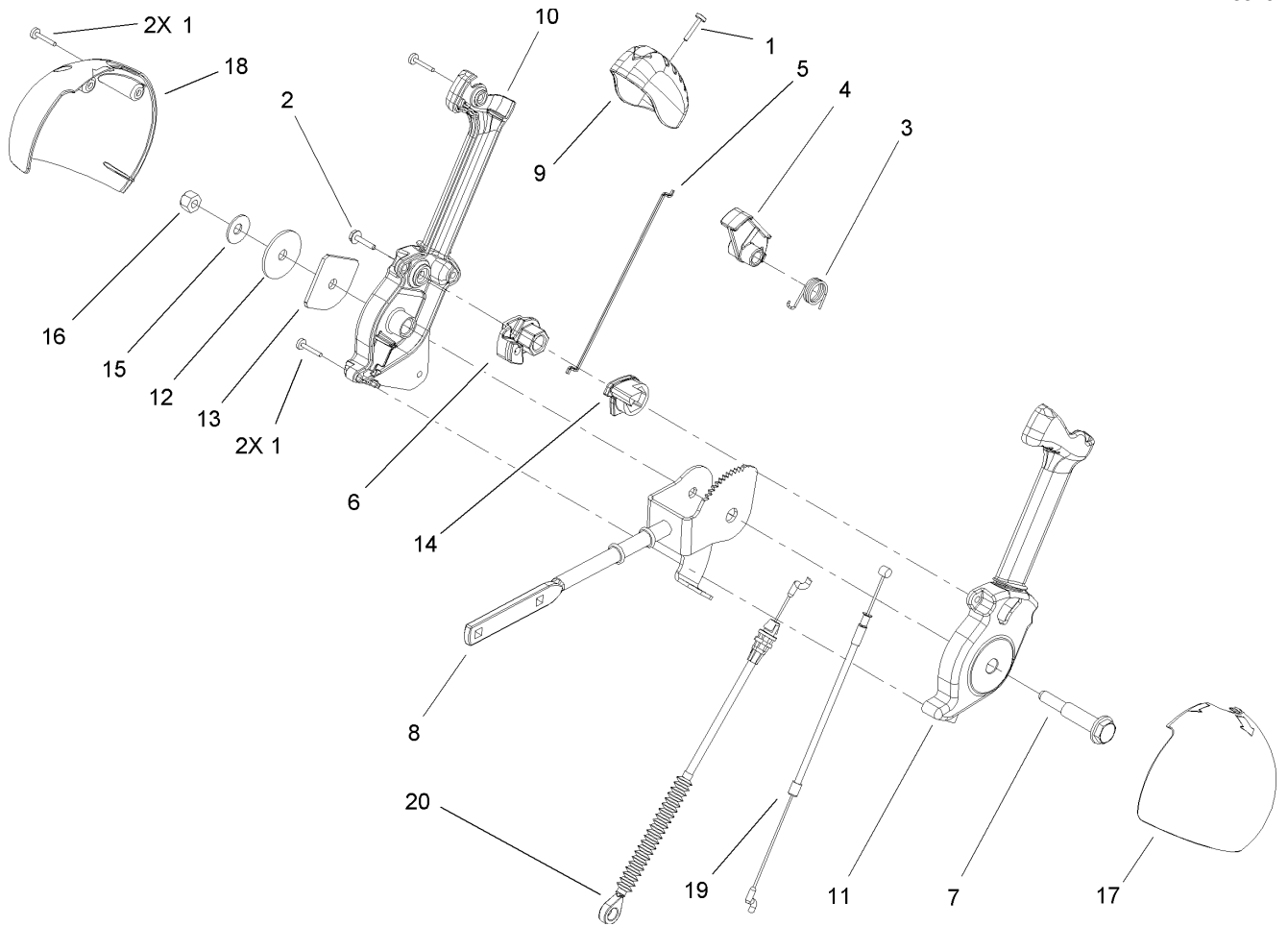
Ref	Part No.	Qty.	Description
29	107-1044	1	Latch-Lockout
30	98-3499	1	Washer-Flat
31	107-3000	1	Link-Lockout
32	105-9998	1	Spring-Torsion
33	106-4412	1	Screw-Shoulder
39	106-4563	1	Cable-Traction
40	106-4599	1	Cable-Auger
42	107-1005	1	Rod-Shift
45	106-4518	1	Decal



Handle and Control Assembly No. 2

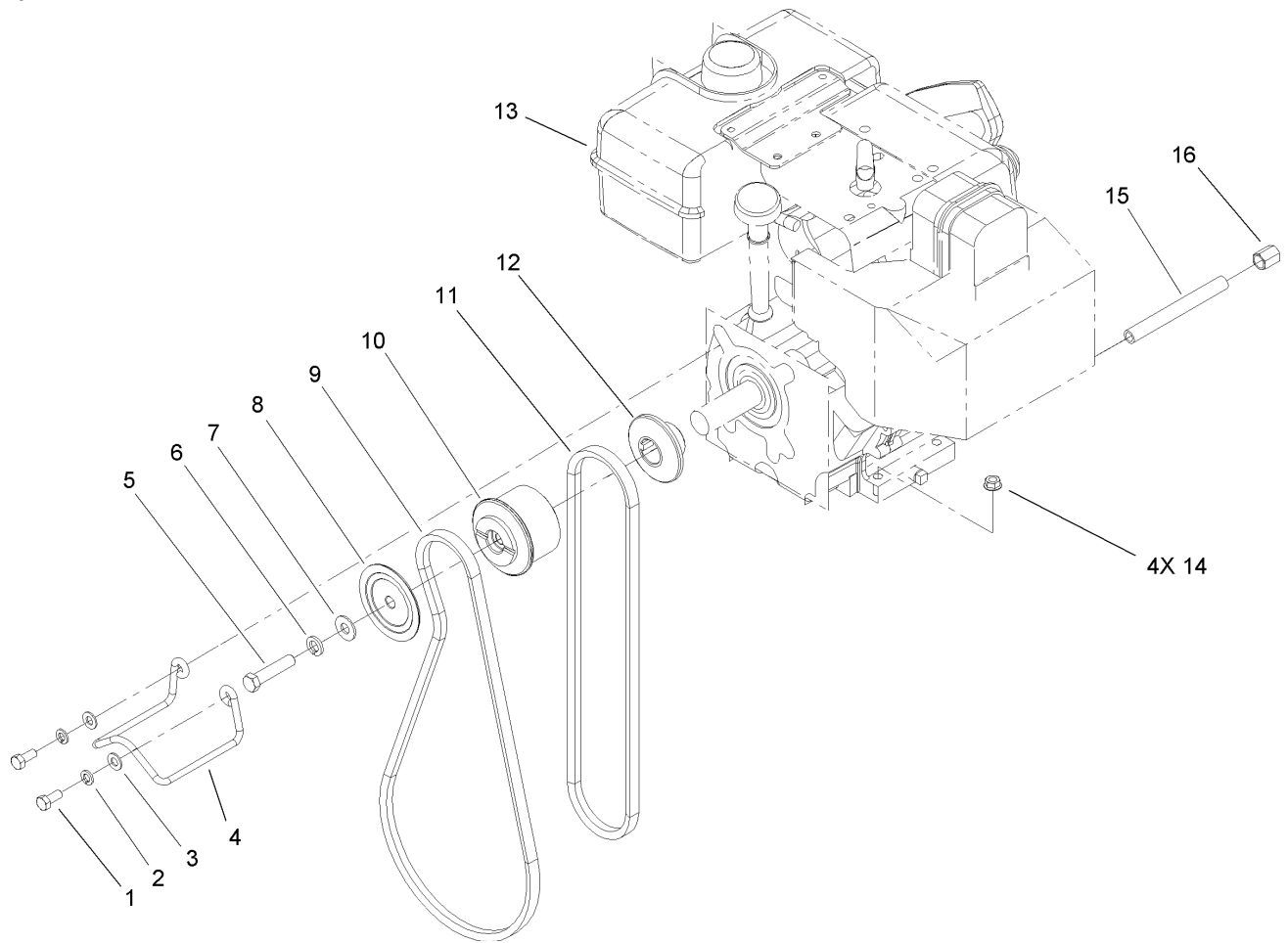
Ref	Part No.	Qty.	Description
2	3229-30	2	Screw-CARR
3	46-8092	2	Screw-Plastite
4	105-9987	2	Support-Rod
5	106-7283	1	Rod-Chute, Front
6	3296-73	2	Nut-Lock, NI
7	105-9994-03	1	Handle-Upper, RH
12	107-3844	4	Washer
13	3296-72	4	Nut-Lock, NI
14	106-4586	1	Cover-Panel, Control
15	94-4496	2	Screw-PPH
16	105-9993-03	1	Handle-Upper, LH
17	105-9981-03	1	Handle-Lower
18	32144-14	4	Screw-HWH
19	3290-475	4	Washer-Belleville
20	92-2260	4	Screw-Handle
21	107-3018	4	Screw-Handle
22	3256-70	4	Washer-Flat
23	3296-72	4	Nut-Lock, NI

--	--	--	--



Chute Control Assembly

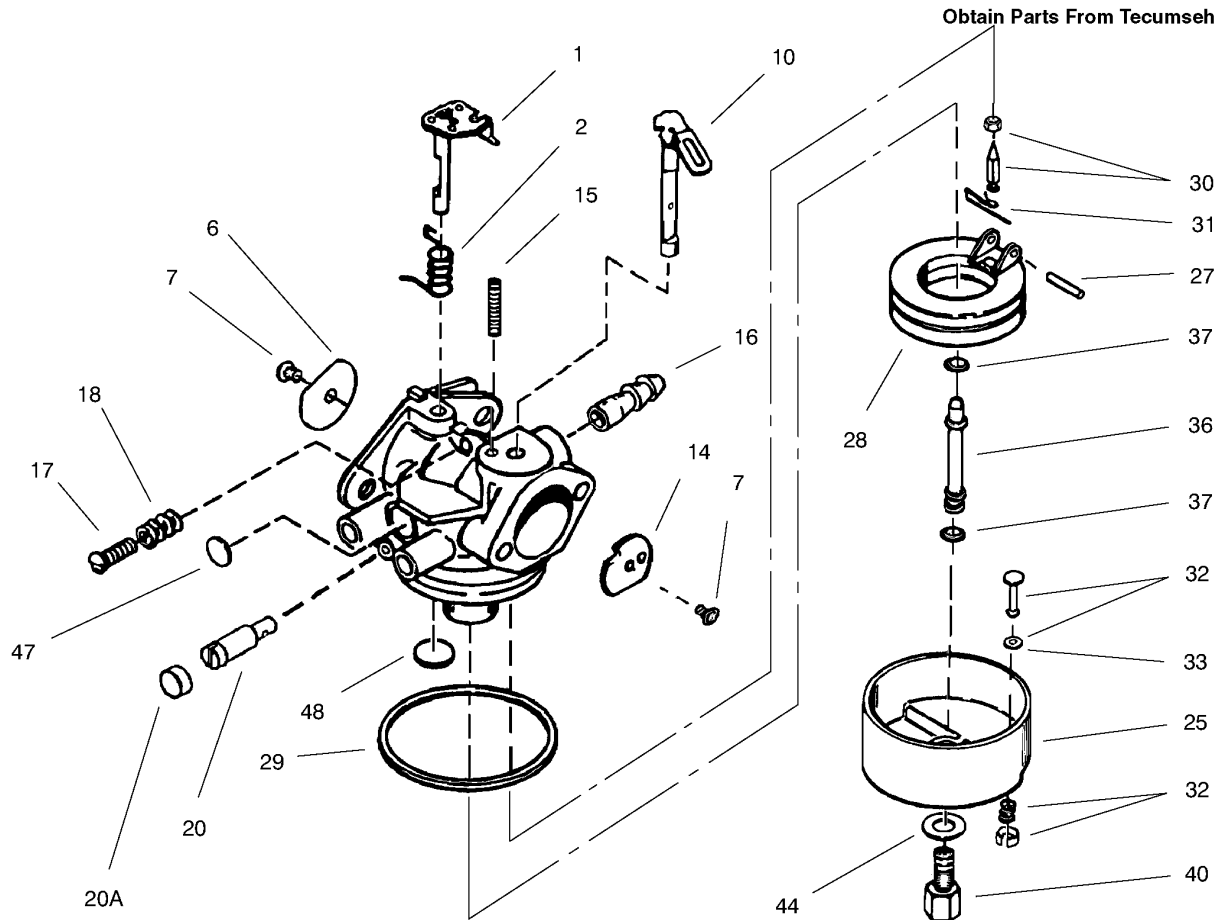
Ref	Part No.	Qty.	Description
1	94-4496	5	Screw-PPH
2	98-1375	1	Screw-HWH
3	105-9982	1	Spring-Torsion
4	105-9984	1	Trigger-Latch
5	105-9985	1	Link-Latch
6	105-9988	1	Lever-Cable, Deflector
7	105-9995	1	Screw-Shoulder
8	106-4479	1	Rod-Control, Chute
9	106-7280	1	Cap-Lever
10	106-7281	1	Lever-Chute Control, RH
11	106-7282	1	Lever-Chute Control, LH
12	107-3002	1	Washer-Nylon
13	106-7295	1	Plate-Friction
14	106-7310	1	Pawl-Latch
15	3290-456	1	Washer-Belleville
16	3296-29	1	Nut-Lock, NI
17	105-9986	1	Cover-Chute Lever, LH
18	106-7292	1	Cover-Chute Lever, RH
19	105-9989	1	Cable-Chute Release
20	105-9990	1	Cable-Control, Deflector



Engine Assembly

Ref	Part No.	Qty.	Description
1	3210-3	2	Screw-HH
2	3253-4	2	Washer-Lock
3	3256-23	2	Washer-Flat
4	107-3835	1	Guide-Belt
5	3212-8	1	Screw-HH
6	3253-6	1	Washer-Lock
7	3256-4	1	Washer-Flat
8	62-0940	1	Sheave-Half, Impeller
9	106-4498	1	Belt-V
10	106-7333	1	Pulley-Engine, Center
11	94-8812	1	V-Belt, Traction
12	106-7334	1	Sheave-Half, Traction
13		1	Engine-Tecumseh, Hmsk-80 155724
14	32128-20	4	Nut-HF
15	289-34	1	Nipple-Pipe
16	288-2	1	Cap-Pipe

--	--	--	--



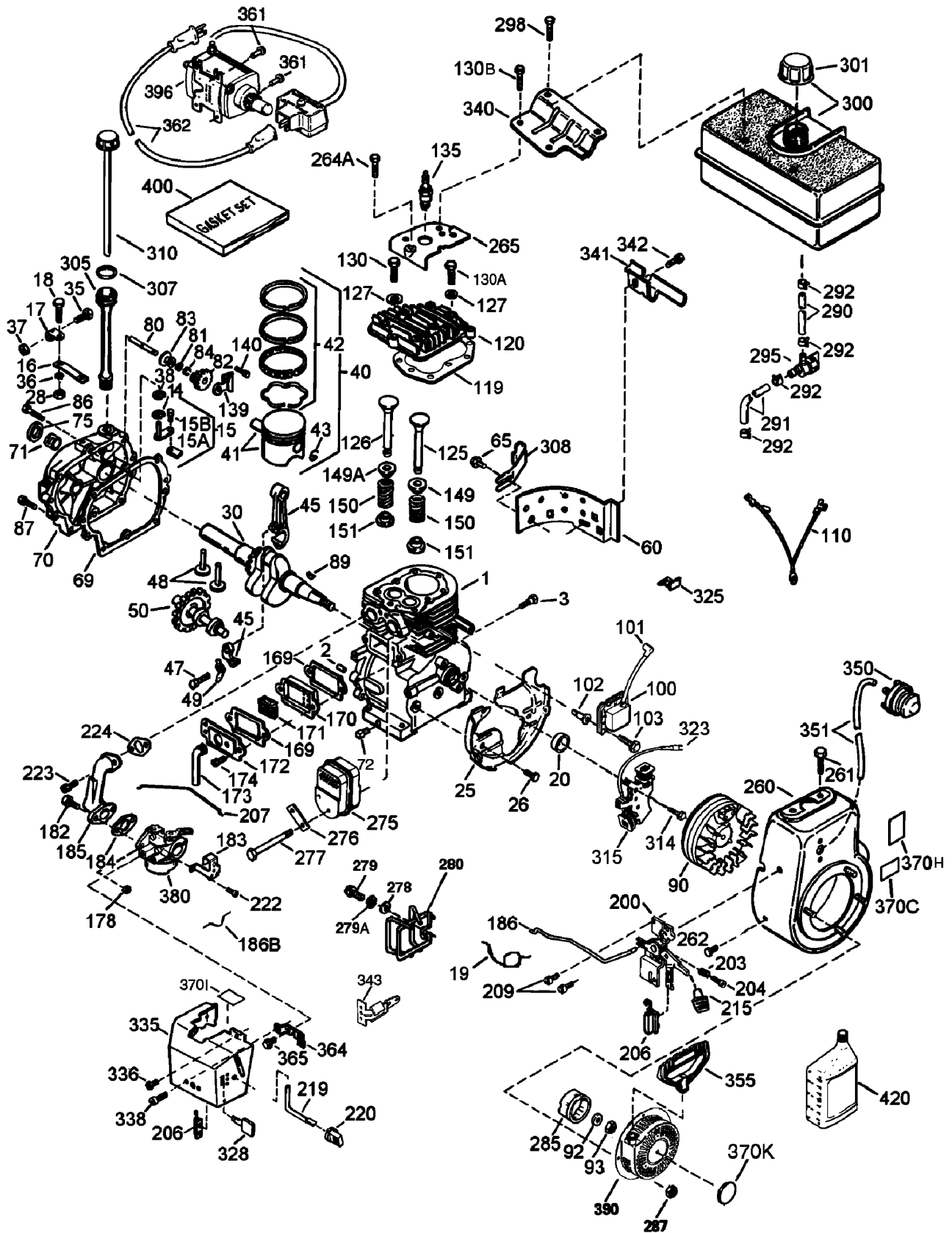
Carburetor Assembly No. 640052 Tecumseh HMSK-80 155724X

Ref	Part No.	Qty.	Description
①	631776A	1	Throttle Shaft And Lever ASM
②	631970	1	Spring-Throttle Return
⑥	631778	1	Shutter-Throttle
⑦	650506	2	Screw-Shutter
⑩	632112	1	Choke Shaft And Lever ASM
⑭	632174	1	Shutter-Choke
⑮	630735	1	Spring-Choke Positioning
⑯	632164	1	Fitting-Fuel
⑰	650417	1	Screw-Idle Speed
⑱	630766	1	Spring-Tension
⑳	640016	1	Screw-Idle Restrictor
⑳A	640053	1	Cap-Idle Restrictor Screw
㉕	631951	1	Float Bowl ASM
㉗	631024	1	Shaft-Float
㉘	632019	1	Float
㉙	631028	1	O-Ring, Float Bowl
㉚	631021	1	Inlet Needle, Seat And Clip ASM
㉛	631022	1	Clip-Spring
㉜	27136A	1	Bowl Drain ASM
㉝	27554	1	Gasket-Drain Plunger
㉞	640005	1	Tube-Main Nozzle
㉟	632547	2	O-Ring, Main Nozzle Tube
㊱	640055	1	Nut-High Speed, Bowl
㊲	27110	1	Gasket

Ref	Part No.	Qty.	Description
㉚	630748	1	Plug-Welch, Idle Mixture Well
㉜	631027	1	Plug-Welch, Vent

Engine Assembly No. 1

Tecumseh HMSK-80 155724X

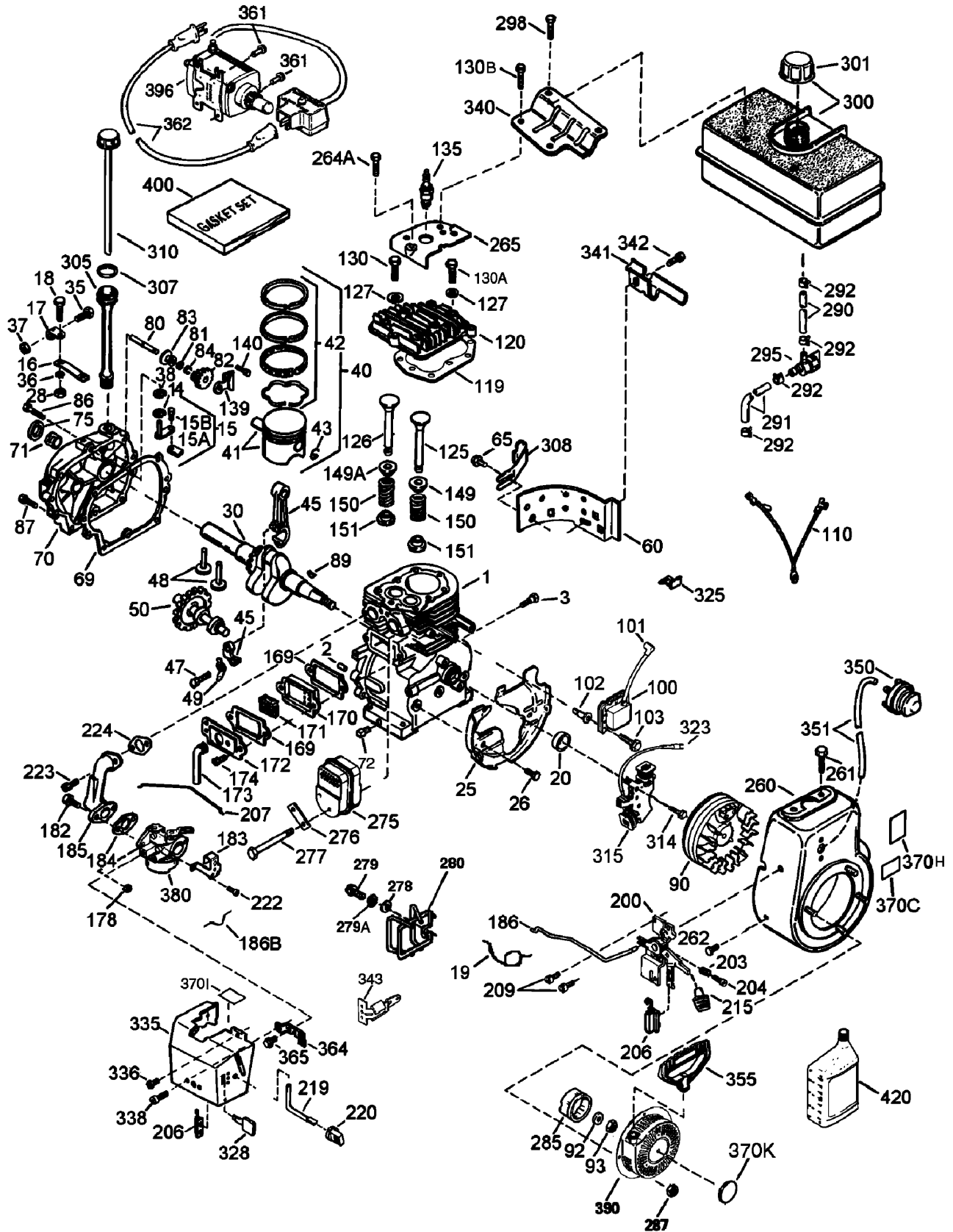


Engine Assembly No. 1

Tecumseh HMSK-80 155724X

Ref	Part No.	Qty.	Description	Ref	Part No.	Qty.	Description
①	35385	1	Cylinder Asm. (Incl. Ref. # 2, 20 And 72)	⑧84	29193	1	Ring-Retaining
②	27652	2	Pin-Dowel	⑧86	650833	7	Screw, 1/4-20 X 1-3/16"
③	650820	2	Screw, 1/4-20 X 1/2"	⑧87	650832	1	Screw, 1/4-20 X 1-11/16"
⑭	28277	1	Washer	⑧89	32589	1	Key-Flywheel
⑮	30699C	1	Governor Rod (Incl. Ref. # 15a And 15b)	⑧90	611093	1	Flywheel ASM (W/ring Gear)
⑮15A	30700	1	Yoke-Governor	⑧92	650880	1	Washer-Lock
⑮15B	650494	1	Screw, 6-40 X 5/16"	⑧93	650881	1	Nut-Flywheel
⑮16	33454A	1	Lever-Governor	⑩100	35135A	1	Solid State Ignition (Incl. Ref. # 101)
⑮17	29916	1	Clamp-Lever, Governor	⑩101	610118	1	Cover-Spark Plug
⑮18	651028	1	Screw-Torx, T-15 (8-32 X 3/8")	⑩102	651024	2	Stud-Mounting, Solid State
⑮19	34663	1	Spring-Throttle	⑩103	651007	2	Screw-Torx, T-15 (10-24 X 15/16")
⑮20	35319	1	Seal-Oil	⑩110	35187	1	Wire-Ground
⑮25	36460	1	Baffle-Blower Housing	⑩110A	37047	1	Wire-Ground
⑮26	650561	2	Screw, 1/4-20 X 5/8"	⑩119	36448	1	Gasket-Head, Cylinder
⑮28	30322	1	Nut-Lock, 10-32	⑩120	36449	1	Cylinder Head ASM
⑮30	35571A	1	Crankshaft	⑩125	27878A	1	Exhaust Valve (Std.) (Incl. Ref. # 151)
⑮35	29826	1	Screw, 10-32 X 3/4"	⑩125	27880A	1	Exhaust Valve (1/32" Os) (Incl. Ref. #151)
⑮36	29918	1	Washer-Lock	⑩126	34035	1	Intake Valve (Std.) (Incl. Ref. # 151)
⑮37	29216	1	Nut-Lock, 10-32	⑩127	650691	2	Washer
⑮38	29642	1	Ring-Retaining	⑩130	6021A	7	Screw, 5/16-18 X 1-7/16"
⑮40	40011	1	Piston, Pin And Ring Set (Std.)	⑩130A	650727	2	Screw, 5/16-18 X 1-25/32"
⑮40	40012	1	Piston, Pin And Ring Set (.010" Os)	⑩130B	651055	2	Screw, 5/16-18 X 39/64"
⑮41	40009	1	Piston And Pin Asm. (Std.) (Incl. Ref. #43)	⑩135	35395	1	Spark Plug (Rn4c)
⑮41	40010	1	Piston And Pin Asm. (.010" Os) (Incl. Ref. #43)	⑩139	33369	1	Bracket-Gear, Governor
⑮42	40013	1	Ring Set (Std.)	⑩140	650836	2	Screw, 10-24 X 1/2"
⑮42	40014	1	Ring Set (.010" Os)	⑩149	27882	1	Cap-Valve Spring
⑮43	27888	2	Ring-Retaining, Piston Pin	⑩149A	35862	1	Cap-Valve Spring
⑮45	36897	1	Connecting Rod Asm. (Incl. Ref. # 47 And 49)	⑩150	27881	2	Spring-Valve
⑮47	651033	2	Bolt-Rod, Connecting	⑩151	32581	2	Keeper-Spring, Valve
⑮48	34034	2	Lifter-Valve	⑩169	27896A	2	Gasket-Cover, Valve
⑮49	36896	1	Dipper-Oil	⑩170	28423	1	Body-Breather
⑮50	35375	1	Camshaft (Mcr)	⑩171	28424	1	Element-Breather
⑮60	33273A	1	Extension-Blower Housing	⑩172	28425	1	Cover-Valve
⑮65	650128	1	Screw, 10-24 X 1/2"	⑩173	35350	1	Tube-Breather
⑮69	37342	1	Gasket-Cover, Cylinder	⑩174	650128	2	Screw, 10-24 X 1/2"
⑮70	35376A	1	Cylinder Cover (Incl. Ref. # 71,75,80-84)	⑩178	29752	2	Nut And Lockwasher ASM
⑮71	35377	1	Bushing-Crankshaft	⑩182	30088A	2	Screw-Torx, T-30 (1/4-20 X 27/32")
⑮72	27642	1	Plug-Oil Drain	⑩183	34587A	1	Bracket-Choke
⑮75	35319	1	Seal-Oil	⑩184	33263	1	Gasket-Carburetor To Intake Pipe
⑮80	37587	1	Shaft-Governor	⑩185	33877	1	Pipe-Intake
⑮81	651080	1	Washer	⑩186	34667	1	Link-Governor
⑮82	37588	1	Governor Gear Asm. (Incl. Ref. # 81)	⑩186B	36652	1	Spring-Choke
⑮83	30588A	1	Spool-Governor	⑩200	34677	1	Control Bracket (Incl. Ref. # 19, 203, 204 And 206)

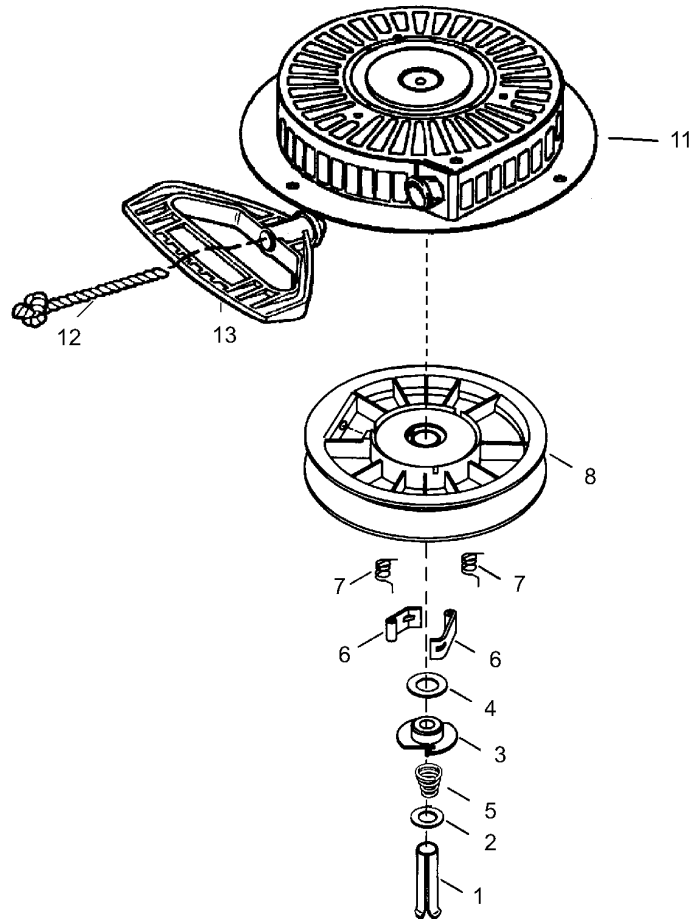
Engine Assembly No. 2 Tecumseh HMSK-80 155724X



Engine Assembly No. 2 Tecumseh HMSK-80 155724X

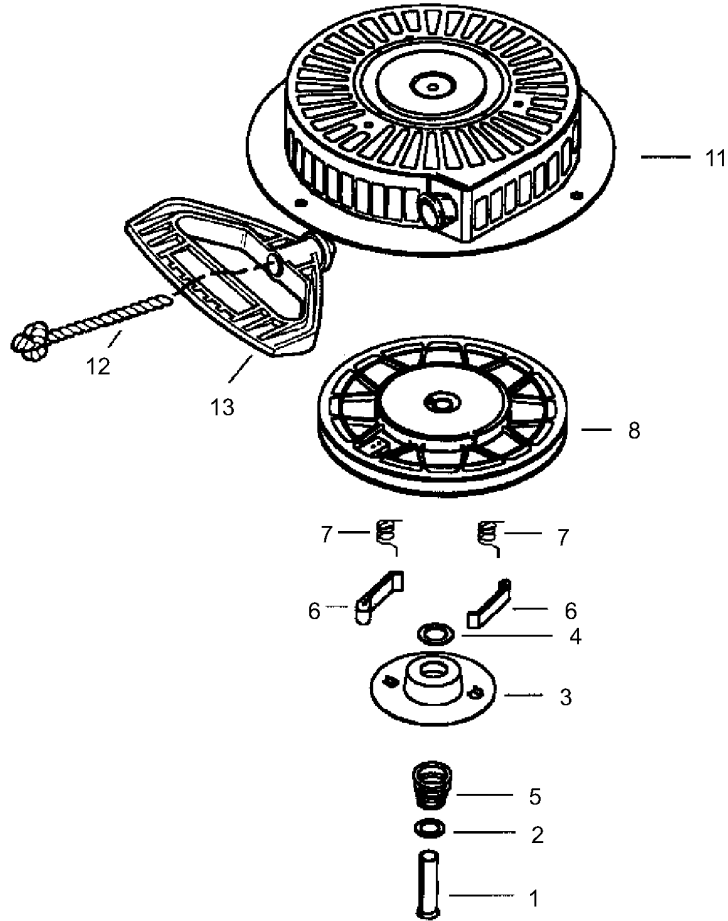
Ref	Part No.	Qty.	Description
③203	31342	1	Spring-Compression
③204	651029	1	Screw-Torx, 5-40 X 7/16"
③206	610973	1	Terminal
③207	33878	1	Link-Throttle
③209	650821	2	Screw
③215	35440	1	Knob-Control
③219	34586	1	Rod-Choke
③220	35438	1	Knob-Choke
③222	28820	2	Screw, 10-32 X 1/2"
③223	650378	2	Screw-Torx, T-30 (5/16-18 X 1-1'8")
③224	27915A	1	Gasket-Intake Pipe
③260	35447A	1	Housing-Blower
③261	650788	2	Screw, 1/4-20 X 3/4"
③262	29747B	2	Screw
③264A	650802	1	Screw-Torx, T-30 (1/4-20 X 1/2")
③265	33272D	1	Cover-Cylinder Head
③275	35056	1	Muffler
③276	31588	1	Plate-Locking
③277	651002	2	Screw, 5/16-18 X 4-3/16"
③278	650147	2	Washer-Flat
③279	650980	2	Screw, 10-16 X 47/64"
③279A	650979	2	Lockwasher
③280	36294	1	Muffler Heat Shield ASM
③285	35985B	1	Cup-Starter
③287	29752	4	Nut And Lockwasher ASM
③290	29774	1	Line-Fuel
③291	30962	1	Line-Fuel
③292	26460	4	Clamp-Fuel Line
③295	35857	1	Fuel Shut-Off Valve ASM (Incl. Ref. # 292)
③298	650665	2	Screw, 1/4-15 X 3/4"
③300	34156A	1	Fuel Tank (Incl. Ref. # 292 And 301)
③301	36246	1	Cap-Fuel
③305	35554	1	Tube-Oil Fill
③307	35499	1	O-Ring
③308	35540	1	Clip-Fill Tube
③310	36205	1	Gage Oil ASM
③314	650873	1	Screw, 1/4-20 X 3/4"
③315	611111	1	Alternator Coil ASM (18 Watt)(Incl. Ref. #322)
③323	611118	1	Terminal
③325	29443	1	Clip-Wire
③328	35062	2	Keys-Ignition
①③329	610973	1	Terminal
③335	36547	1	Cover-Carburetor
③336	650765	1	Screw, 10-32 X 1/2"
③338	28942	2	Screw, 10-32 X 3/8"
③340	34154	1	Bracket-Fuel Tank

Ref	Part No.	Qty.	Description
③341	34155	1	Bracket-Fuel Tank
③342	650561	1	Screw, 1/4-20 X 5/8"
③343	35079A	1	Key Switch Bracket (Incl. Ref. #343a)
①③343A	651060	1	Screw, 10-32 X 23/64"
③350	570682A	1	Primer ASM
③351	32180C	1	Line-Primer
③355	590574	1	Handle-Grip, Mitten
③361	650990	2	Screw-Torx, T-30 (1/4-20 X 15/32")
③364	33377	1	Bracket-Carburetor
③365	650767	2	Screw, 8-32 X 27/64"
③370C	36501	1	Decal-Primer
③370H	35077	1	Decal-Instruction
③370I	37119	1	Decal-Warning
③370K	36695	1	Decal-Starter
①③371D	36534	1	Decal-Caution
③380	640052	1	Carburetor (Incl. Ref. #184)
③390	590749	1	Rewind Starter ASM
③396	37102	1	Electric Motor ASM (220 Volt)
③400	36450C	1	Gasket Set
③420	730226A	1	Sae 5w30 4-Cycle Engine Oil (Quart)



Rewind Starter Assembly No. 590749 Tecumseh HMSK-80 155724X

Ref	Part No.	Qty.	Description				
1	590599A	1	Pin-Spring				
2	590600	1	Washer				
3	590679	1	Retainer				
4	590601	1	Washer				
5	590678	1	Spring-Brake				
6	590680	2	Dog- Starter				
7	590412	2	Spring-Dog				
8	590682	1	Pulley And Rewind Spring ASM				
11	590750A	1	Starter Housing ASM				
12	590535	1	Rope-Starter (Length 98" X 9/64" Dia)				
13	590574	1	Handle-Grip, Mitten				



Rewind Starter Assembly No. 590733 (Optional) Tecumseh HMSK-80 155724X

Ref	Part No.	Qty.	Description				
1	590599A	1	Pin-Spring				
2	590600	1	Washer				
3	590696	1	Retainer				
4	590601	1	Washer				
5	590697	1	Spring-Brake				
6	590698	2	Dog-Starter				
7	590699	2	Spring-Dog				
8	590709	1	Pulley And Rewind Spring ASM				
11	590734A	1	Starter Housing ASM				
12	590535	1	Rope-Starter (Length 98" X 9/64" Dia)				
13	590574	1	Handle-Grip, Mitten				

NOTES

NOTES

NOTES

