



828LE Power Max Snowthrower

Model No. 38635 - 240000001 and up.

Parts Catalog

Ordering Replacement Parts

To order replacement parts, please supply: the part number, the quantity, and the description of each part desired.

Understanding Reference Numbers

Each identified part in an illustration has a reference number. The reference number for a part also appears in the parts list, along with other information about the part.

This catalog uses two special reference number formats, one to indicate parts in a service assembly and another to indicate the quantity of a given part in an illustration.

Service Assembly Reference Numbers

Parts in service assemblies have reference numbers in the form **a:b**. The **a** represents the reference number of the entire service assembly and the **b** represents a sequential number unique to each part within the service assembly.

For example, a wheel assembly might be identified by reference number 6, the tire by **6:1**, the valve by **6:2**, and the wheel by **6:3**. When you order the assembly identified by reference number 6, you receive all parts identified by reference numbers 6:1, 6:2, and 6:3. However, you may also order any part individually. Reference numbers of this type appear in illustrations and in part lists.

Reference Numbers Indicating Quantity

In an illustration, if a reference number indicates more than one part, the reference number has the form **nX y**. The **n** represents the quantity of the part, the **X** is the multiplication symbol, and the **y** represents the reference number.

For example, in an illustration, the reference number **2X 37** means that two of the parts identified by reference number 37 are indicated.

Part Description Abbreviations

Part descriptions in this catalog may include the following abbreviations.

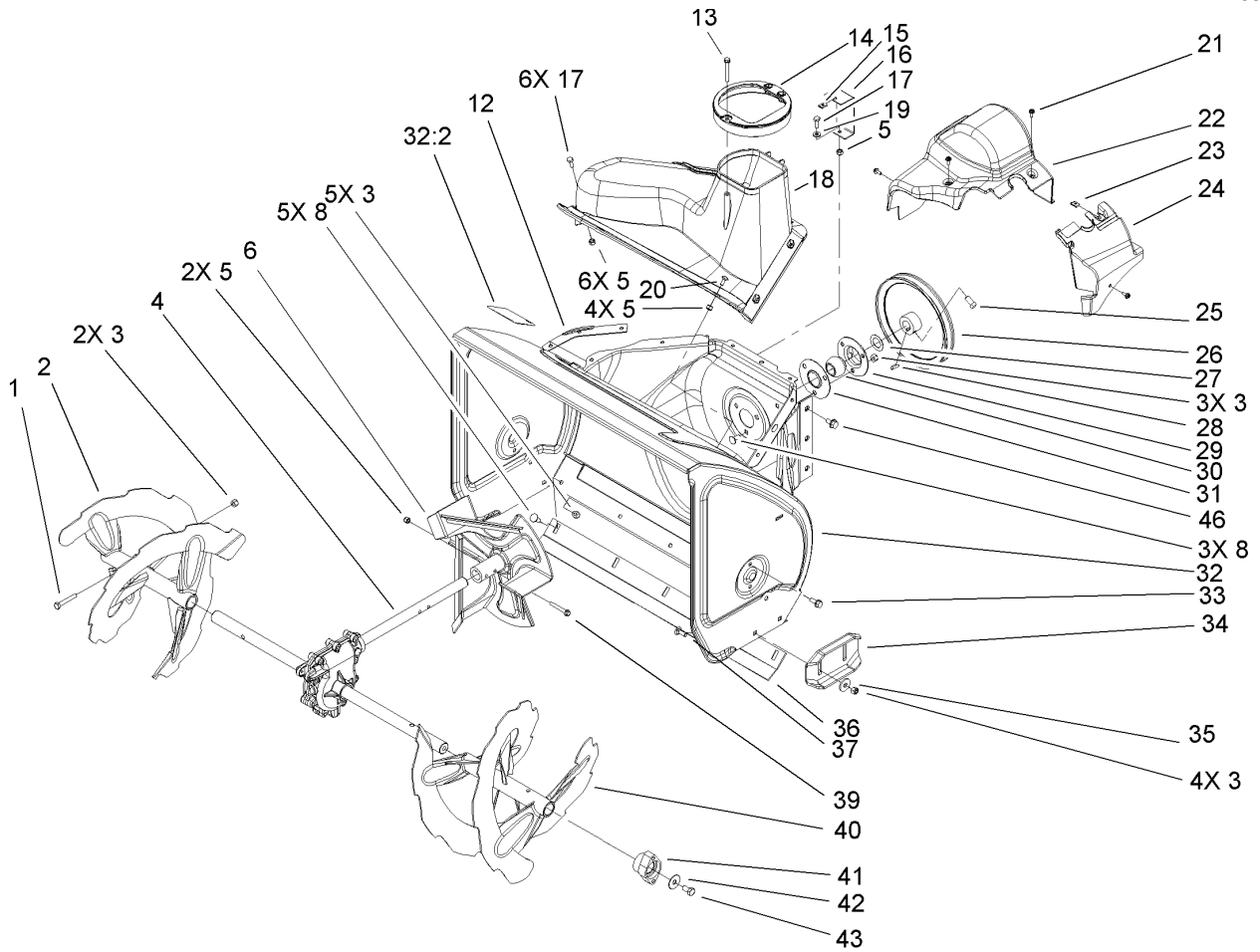
AR.	as required	HYD.	hydraulic
ASM.	assembly	INC.	incorporated
CARR.	carriage	LH.	left hand
DEG.	degrees	NI.	nylon insert
FH.	flat head	PPH.	phillips pan head
GA.	gauge	PTH.	phillips truss head
HF.	hex flange	PTO.	power take off
HH.	hex head	RH.	right hand
HHF.	hex head flange	SFH.	slotted fillister head
HHFTF.	hex head flange thread forming	SHH.	slotted hex head
HJ.	hex jam	SHWH.	slotted hex washer head
HLH.	hex lag head	SPH.	slotted pan head
HOC.	height-of-cut	SQH.	square head
HS.	hex	SRH.	slotted round head
HSBH.	hex socket button head	STD.	standard
HSFH.	hex socket flat head	TAP.	self tapping
HSH.	hex socket head	TTH.	torx truss head
HWH.	hex washer head	WH.	wing head
HWHTF.	hex washer head thread forming		

Footnotes

- ❶ Not serviced separately
- ❷ Included in gasket set 36452A
- ❸ Obtain parts from your local Tecumseh dealer

Contents

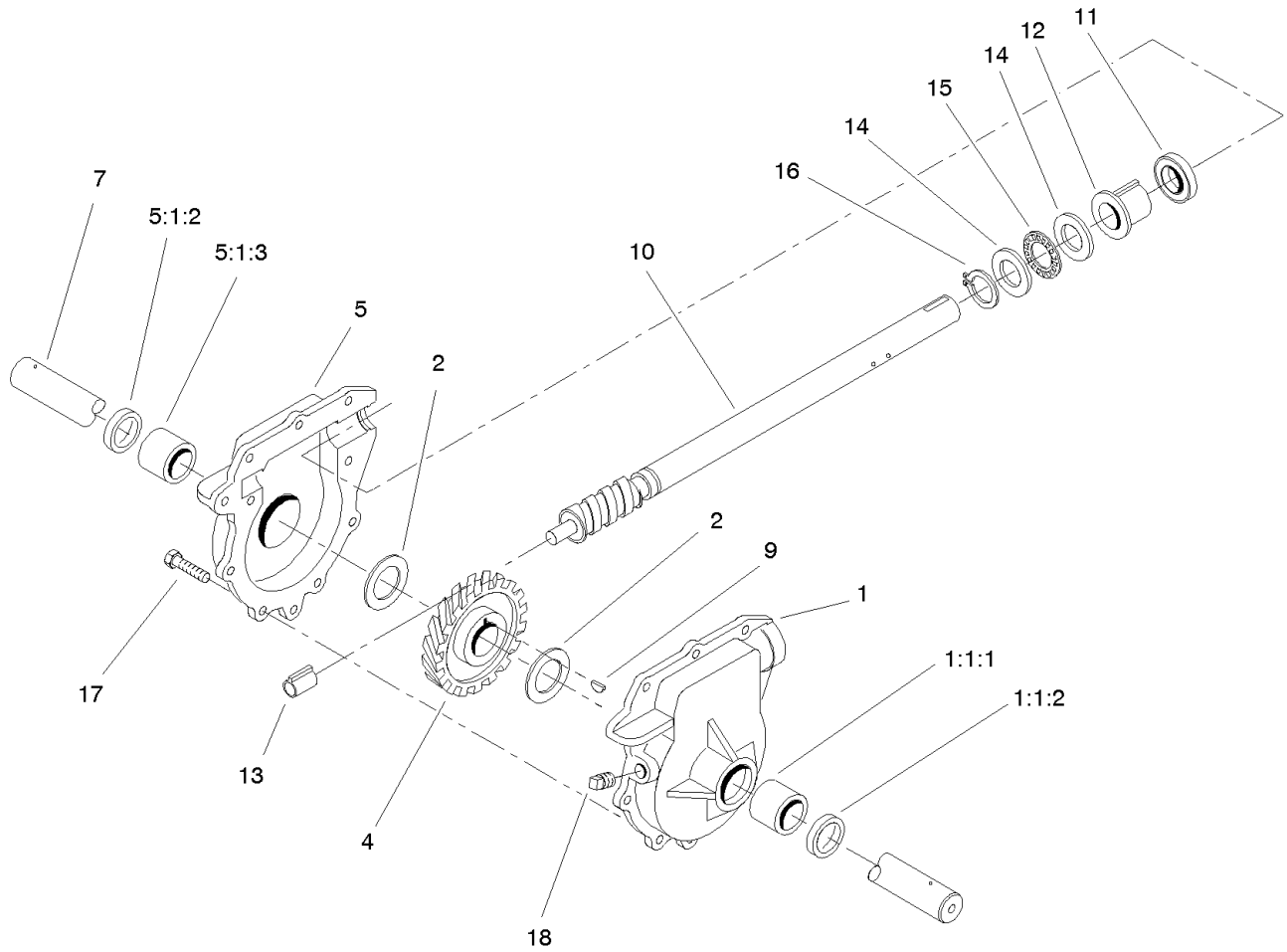
Description	Page	Description	Page
Auger and Housing Assembly 3	Engine Assembly No. 2 Tecumseh HMSK-100 159495Y 16
28in Auger Gearcase Assembly No. 106-7254 4	220 Volt Electric Starter Assembly No. 37102 Tecumseh HMSK-100 159495Y 18
Chute Assembly 5	Rewind Starter Assembly No. 590749 Tecumseh HMSK-100 159495Y 19
Chain Drive Assembly 6	Rewind Starter Assembly No. 590733 (Optional) Tecumseh HMSK-100 159495Y 20
Frame Assembly 7		
Handle and Control Assembly 9		
Headlamp, Handle and Control Assembly 10		
Chute Control Assembly 11		
Engine Assembly 12		
Carburetor Assembly No. 640054 Tecumseh HMSK-100 159495Y 13		
Engine Assembly No. 1 Tecumseh HMSK-100 159495Y 14		



Auger and Housing Assembly

Ref	Part No.	Qty.	Description
1	322-10	2	Screw-HH
2	106-7291-03	1	Auger-Rh, 28in
3	3296-29	14	Nut-Lock, NI
4	106-7254	1	28in Auger Gearcase ASM
5	3296-42	13	Nut-Lock, NI
6	106-4576-03	1	Impeller ASM
8	3230-23	8	Screw-CARR
12	107-1017-03	1	Seal-Cover Flange
13	107-3003	1	Screw-Plastite
14	107-3006	1	Guide-Chute
15	107-1013	1	Nut-Speed, U-Type
16	107-1014-03	1	Bracket-Cover, Clip Nut
17	321-4	7	Screw-HH
18	107-3007	1	Cover
19	3256-22	1	Washer-Flat
20	3229-1	4	Screw-CARR
21	32144-112	4	Screw-HWHTF
22	107-1001	1	Cover-Belt
23	701493	1	Nut-Speed
24	107-1016	1	Cover-Belt Extension
25	3242-4	2	Screw-Set, SQH
26	62-1300	1	Pulley-Impeller
27	252-80	1	Washer-Thrust
28	3257-23	1	Key-Woodruff

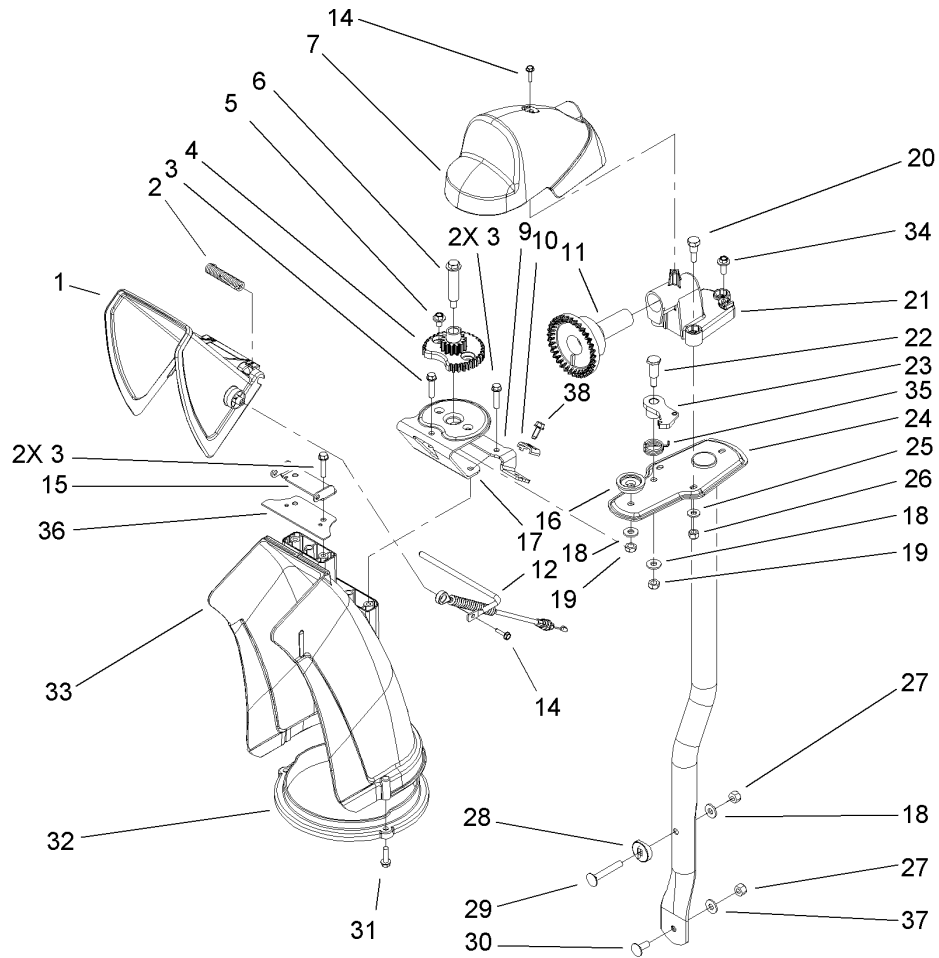
Ref	Part No.	Qty.	Description
29	26-6110	1	Flange-Cup, Bearing
30	63-3450	1	Bearing-Ball
31	26-6120	1	Flange-Cup, Bearing
32	107-3824	1	28in Auger Housing ASM
32:2	107-3040	1	Decal-Auger Danger
33	32144-70	4	Screw-HH
34	106-4588-01	2	Skid
35	52-2861	4	Washer
36	106-4573-01	1	Scraper-Fixed, 28in
37	3230-16	4	Screw-CARR
39	321-44	2	Screw-HHF
40	106-7301-03	1	28in LH Auger ASM
41	106-4570	2	Auger-Bearing
42	3-0750	2	Washer
43	323-4	2	Screw-HH
46	32144-14	6	Screw-HWH



28in Auger Gearcase Assembly No. 106-7254

Ref	Part No.	Qty.	Description
1	74-1570	1	LH Auger Gearcase ASM
● 1:1		1	LH Auger Gearcase ASM
1:1:1	256-237	1	Bushing
1:1:2	7-0045	1	Seal-Oil
2	252-71	2	Washer-Thrust
4	62-0120	1	Gear-Helical
5	74-1580	1	RH Auger Gearcase ASM
● 5:1		1	RH Auger Gearcase ASM
5:1:2	7-0045	1	Seal-Oil
5:1:3	256-237	1	Bushing
7	106-4421	1	Shaft-Auger, 28in
9	3257-10	1	Key-Woodruff
10	66-7811	1	Shaft-Impeller
11	253-149	1	Seal-Oil
12	37-6560	1	Bushing-Input
13	62-1150	1	Bushing-Worm
14	252-78	2	Bearing-Thrust
15	252-76	1	Bearing-Thrust
16	32151-33	1	Ring-Retaining, Ext
17	32144-110	9	Screw-HWH
18	281-1	1	Plug-Pipe, SQH

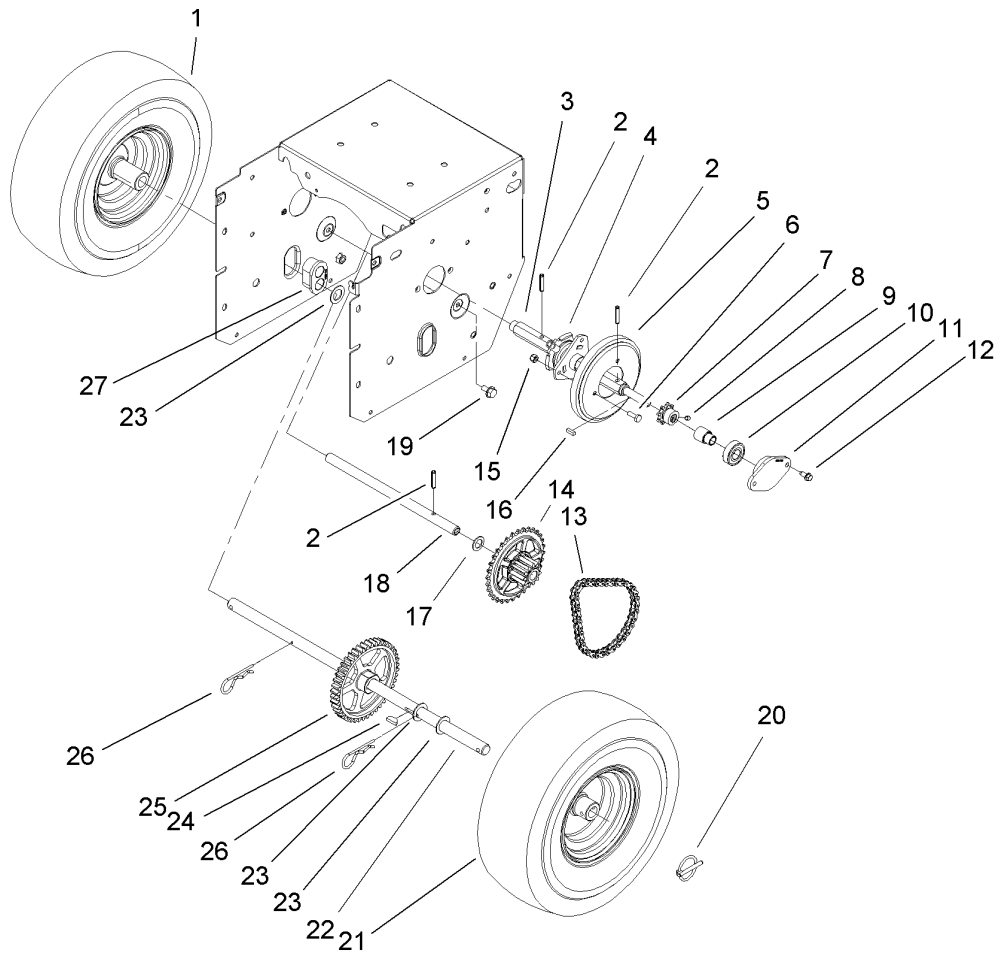
--	--	--	--



Chute Assembly

Ref	Part No.	Qty.	Description
1	106-7309	1	Deflector-Chute, Ce
2	106-4594	1	Spring-Torsion
3	46-8092	5	Screw-Plastite
4	106-4472	1	Gear-Chute
5	46-6810	2	Screw And Washer ASM
6	100-9880	1	Bolt-Shoulder
7	106-4585	1	Cover-Gear, Chute
9	106-7296	1	Bracket-Cable, Clamp
10	106-7297	1	Clamp-Cable
11	106-4471	1	Gear-Face
12	107-1021	1	Rod-Deflector
14	98-1375	2	Screw-HWH
15	106-7266	1	Bracket-Deflector
16	106-4582-03	1	Bracket-Support, Chute
17	106-4422	1	Spacer-Chute
18	3256-2	3	Washer-Flat
19	3296-47	2	Nut-Lock, NI
20	106-7276	3	Screw-Shoulder
21	106-7257	1	Mount-Gear, Face
22	63-2650	1	Screw-Shoulder
23	106-4476	1	Latch-Chute
24	106-7253-03	1	Tube-Support
25	3256-22	3	Washer-Flat
26	3296-42	3	Nut-Lock, NI

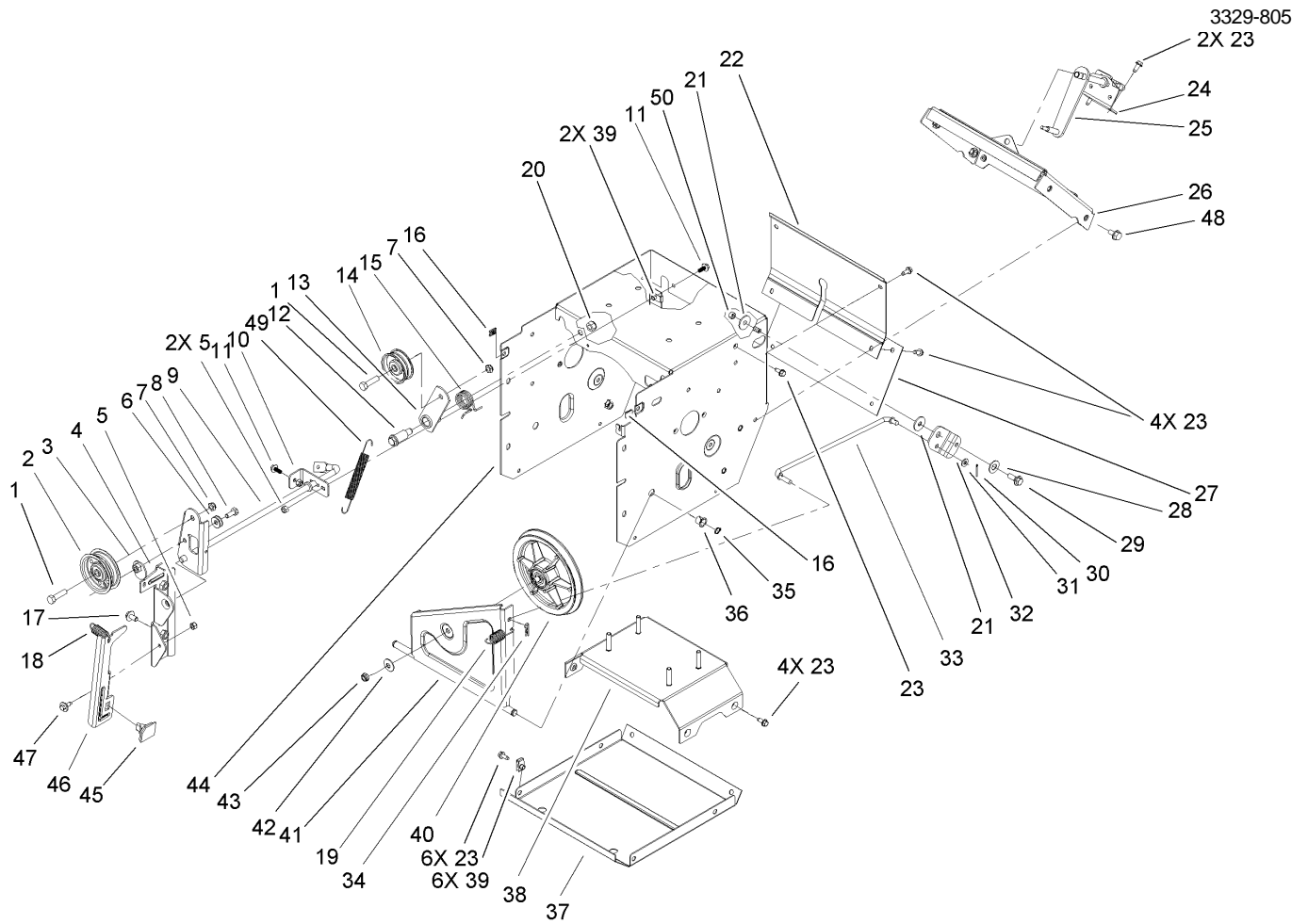
Ref	Part No.	Qty.	Description
27	3296-29	2	Nut-Lock, NI
28	106-7260	1	Washer-Curved
29	3230-5	1	Screw-CARR
30	3230-23	1	Screw-CARR
31	46-8091	3	Screw-HWH
32	105-9991	1	Ring-Chute
33	106-4440	1	Chute-Discharge
34	46-6811	1	Screw-HWH
35	106-4475	1	Spring-Torsion
36	107-1019	1	Seal-Chute
37	3290-456	1	Washer-Belleville
38	32144-10	1	Screw-HWH



Chain Drive Assembly

Ref	Part No.	Qty.	Description
1	107-3042	1	Tire
1	107-3043	1	Rim-Tire
2	32121-9	3	Pin-Spring
3	106-4593	1	Shaft-Hex, Chain
4	106-4434	1	Trunion-Hex
5	106-4480	1	Wheel-Friction
6	321-4	3	Screw-HH
7	106-7317	1	Sprocket-8 Tooth
8	3245-32	2	Screw-HS
9	106-7250	1	Spacer-Bearing, Sleeve
10	100-1048	2	Bearing-Ball
11	106-7308	2	Retainer-Bearing
12	32144-10	4	Screw-HWH
13	106-7293	1	Chain-Roller
13	2710-6	1	Link-Connecting
14	106-7261	1	Sprocket ASM
15	3296-42	3	Nut-Lock, NI
16	94-8850	1	Key-Square
17	107-3041	1	Washer-Flat
18	106-4592	1	Shaft-Intermediate
19	32144-14	2	Screw-HWH
20	107-3039	2	Klik Pin ASM
21	107-3042	1	Tire
21	107-3043	1	Rim-Tire

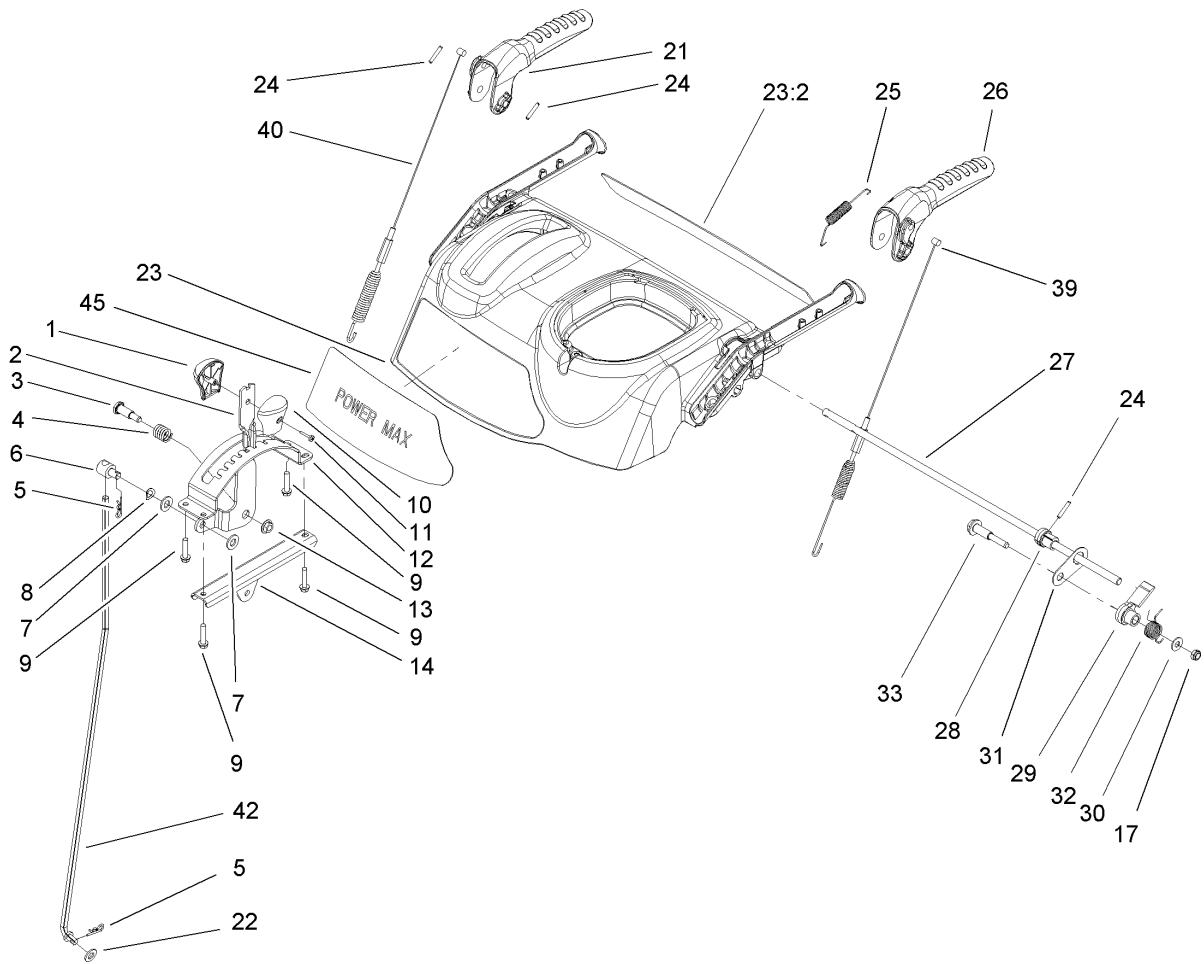
Ref	Part No.	Qty.	Description
22	106-4449	1	Shaft-Axle
23	3-8664	3	Washer-Thrust
24	3257-7	1	Key-Woodruff
25	106-4572	1	Gear-Axle, 44 Tooth
26	3290-343	2	Pin-Hair
27	106-4558	2	Bearing-Axle



Frame Assembly

Ref	Part No.	Qty.	Description
1	323-8	2	Screw-HH
2	92-7104	1	Pulley-Idler
3	107-1047	1	Nut ASM
4	107-1039	1	Bracket-Idler, Impeller
5	3296-42	3	Nut-Lock, NI
6	3290-456	1	Washer-Belleville
7	3296-59	2	Nut-Lock, NI
8	322-3	1	Screw-HH
9	106-7339-03	1	Auger Clutch ASM
10	106-7341	1	Bracket-Clutch Rear
11	99-6810	2	Screw-HH
12	107-1022	1	Bolt-Shoulder
13	106-7312	1	Arm-Idler, Traction
14	3-4244	1	Pulley-Idler
15	93-4816	1	Spring-Torsion, RH
16	107-1013	2	Nut-Speed, U-Type
17	3234-7	2	Screw-HHF
18	107-1045	1	Spring-Extension
19	107-1003	1	Spring-Extension
20	3296-76	1	Nut-Lock, NI
21	5-4460	2	Washer-Pivot
22	106-4556-01	1	Cover-Upper
23	32144-10	17	Screw-HWH
24	106-7325	1	Bracket-Shift Rod

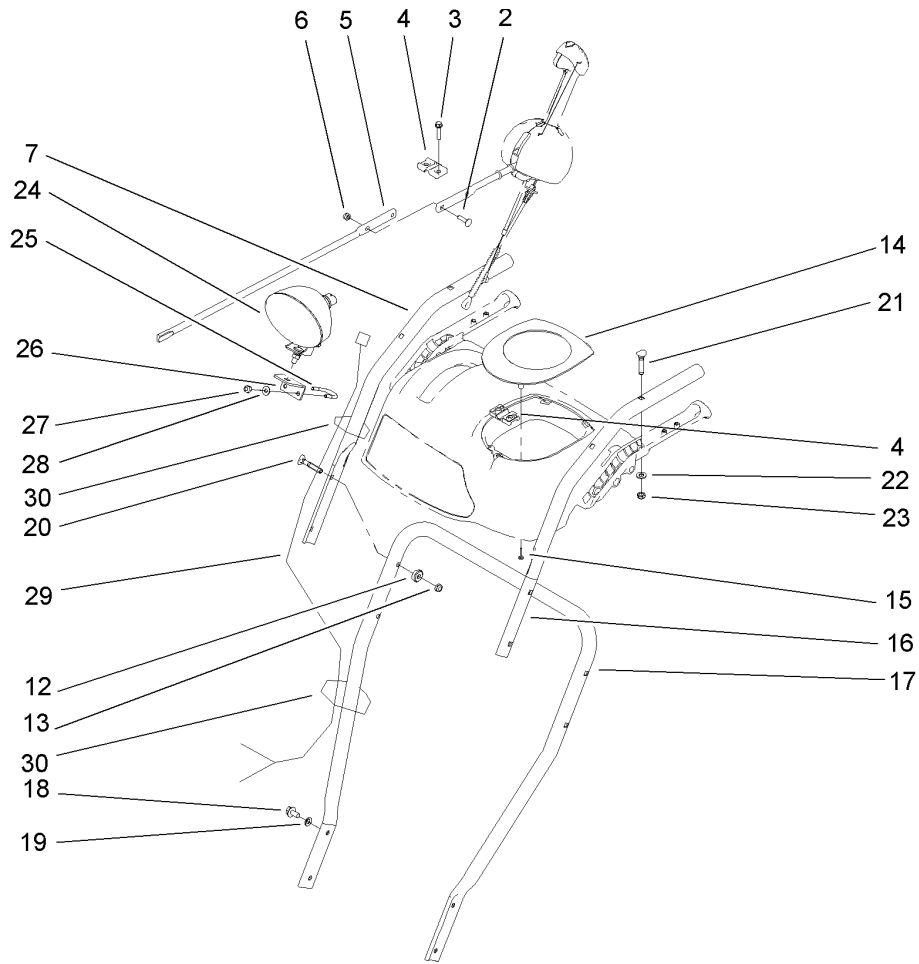
Ref	Part No.	Qty.	Description
25	106-7268	1	Lever-Control, Traction
26	106-7342-01	1	Shift Plate ASM
27	106-7345-01	1	Cover-Lower
28	25-5640	1	Washer
29	27-0410	1	Screw-Shoulder
30	3272-4	1	Pin-Cotter
31	3256-23	1	Washer-Flat
32	107-1011	1	Bellcrank-Drive
33	106-4467	1	Link-Control, Speed
34	3290-307	1	Pin-Hair
35	32151-61	2	Ring-Retaining
36	256-257	2	Bushing-Nyliner
37	106-7330-01	1	Pan-Bottom
38	106-7315	1	Brace Frame ASM
39	107069	8	Clip
40	106-4500	1	Pulley-Traction
41	106-7274	1	Pulley Pivot ASM
42	3290-340	1	Washer-Belleville
43	3296-5	1	Nut-Lock, NI
44	106-4495-01	1	Frame-Traction
45	66-8060	1	Pad-Brake
46	107-1000	1	Arm-Brake
47	92-9698	1	Screw-Shoulder
48	32144-14	4	Screw-HWH



Handle and Control Assembly

Ref	Part No.	Qty.	Description
1	106-4423	1	Knob-Shift, RH
2	106-7278-03	1	Selector-Speed
3	63-2650	1	Screw-Shoulder
4	107-3017	1	Spring-Compression
5	3290-307	2	Pin-Hair
6	101161	1	Trunnion
7	3256-24	2	Washer-Flat
8	612586	1	Washer-Spring
9	46-8092	4	Screw-Plastite
10	105-9999	1	Knob-Shift, LH
11	94-4496	1	Screw-PPH
12	106-7277-03	1	Guide-Selector, Speed
13	32128-13	1	Nut-HF
14	106-7279-03	1	Mount-Selector, Speed
17	3296-72	1	Nut-Lock, NI
21	106-4413	1	Lever-Auger
22	3256-38	1	Washer-Flat
23	107-3826	1	Control Panel ASM
23:2	106-4523	1	Decal-Control Panel Back
24	32121-125	3	Pin-Spring
25	107-3001	1	Spring-Tension
26	106-4410	1	Lever-Traction
27	105-9996	1	Rod-Lockout
28	107-1043	1	Cam-Lockout

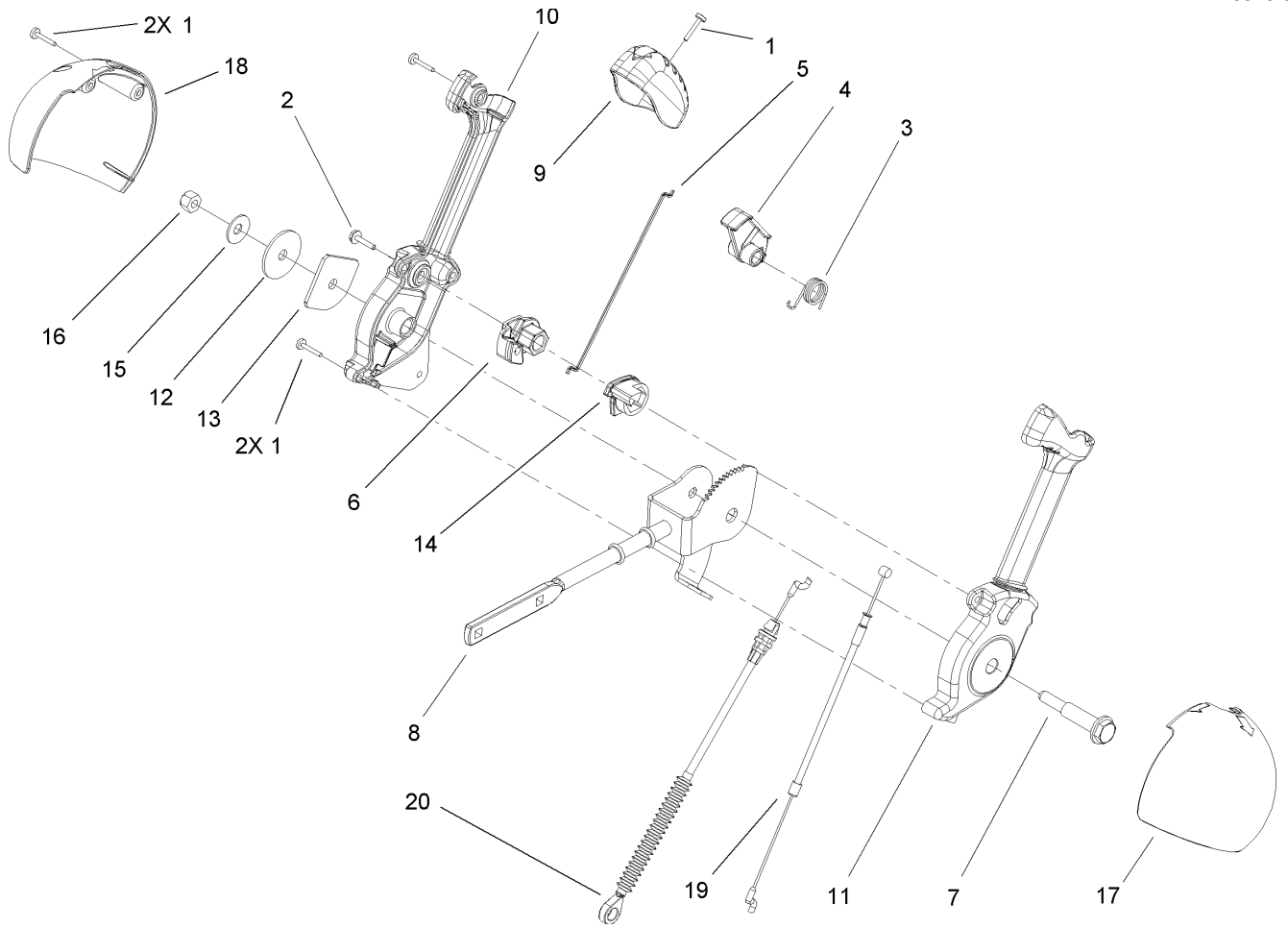
Ref	Part No.	Qty.	Description
29	107-1044	1	Latch-Lockout
30	98-3499	1	Washer-Flat
31	107-3000	1	Link-Lockout
32	105-9998	1	Spring-Torsion
33	106-4412	1	Screw-Shoulder
39	106-4563	1	Cable-Traction
40	106-4599	1	Cable-Auger
42	107-1005	1	Rod-Shift
45	107-3031	1	Decal-Control Panel



Headlamp, Handle and Control Assembly

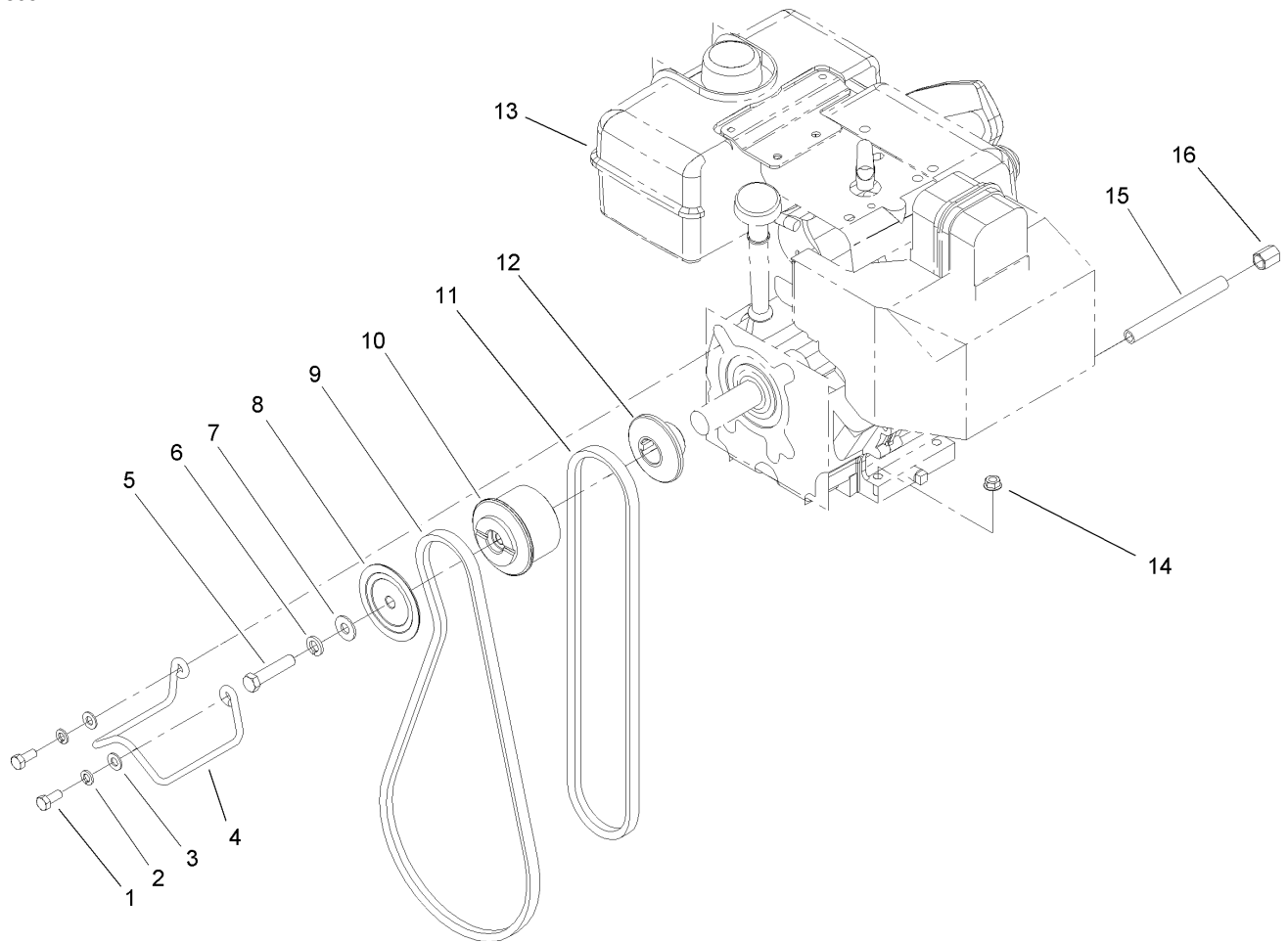
Ref	Part No.	Qty.	Description
2	3229-30	2	Screw-CARR
3	46-8092	2	Screw-Plastite
4	105-9987	2	Support-Rod
5	106-7283	1	Rod-Chute, Front
6	3296-73	2	Nut-Lock, NI
7	105-9994-03	1	Handle-Upper, RH
12	107-3844	4	Washer
13	3296-72	4	Nut-Lock, NI
14	106-4586	1	Cover-Panel, Control
15	94-4496	2	Screw-PPH
16	105-9993-03	1	Handle-Upper, LH
17	105-9981-03	1	Handle-Lower
18	32144-14	4	Screw-HWH
19	3290-475	4	Washer-Belleville
20	92-2260	4	Screw-Handle
21	107-3018	4	Screw-Handle
22	3256-70	4	Washer-Flat
23	3296-72	4	Nut-Lock, NI
24	106-4510	1	Headlamp-ASM
25	107-3024	1	Clamp-Light
26	107-1020-03	1	Bracket-Light
27	3296-73	2	Nut-Lock, NI
28	3256-1	2	Washer-Flat
29	106-4511	1	Harness-Wire

Ref	Part No.	Qty.	Description
30	614249	2	Strap-Tie



Chute Control Assembly

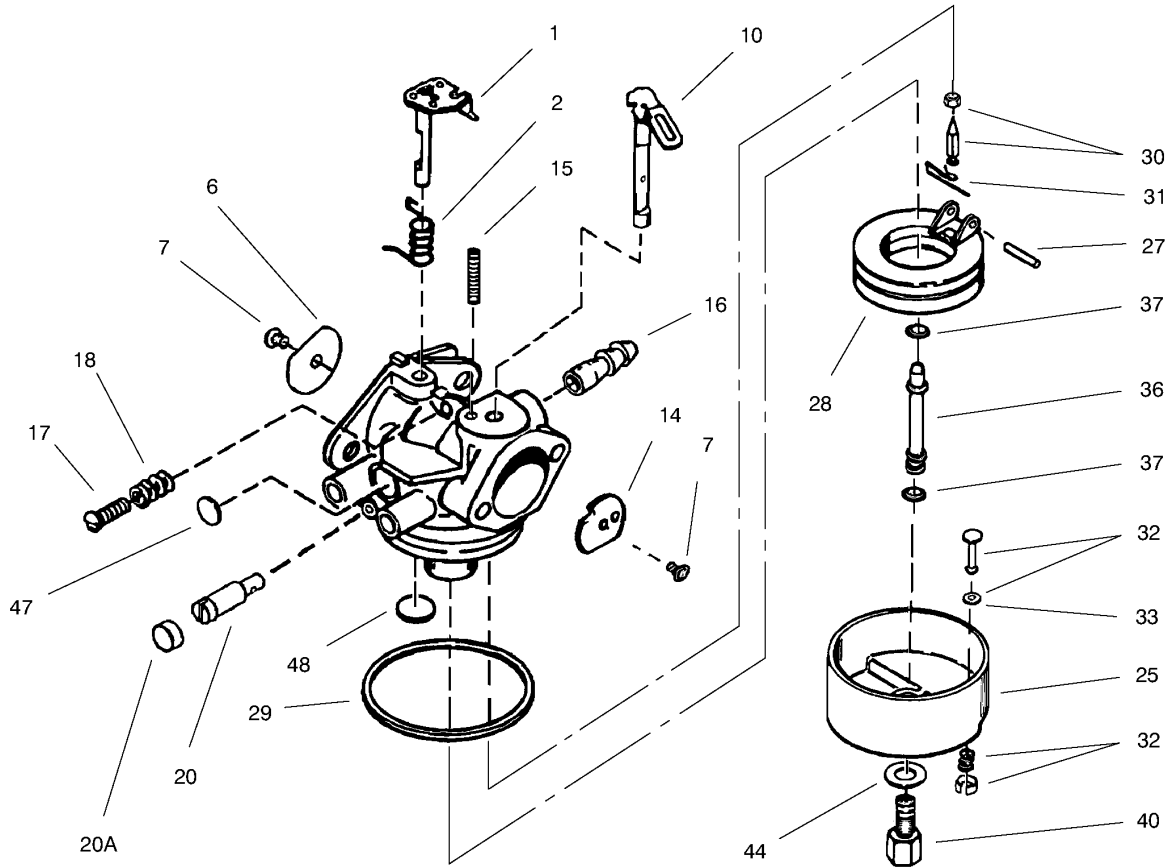
Ref	Part No.	Qty.	Description
1	94-4496	5	Screw-PPH
2	98-1375	1	Screw-HWH
3	105-9982	1	Spring-Torsion
4	105-9984	1	Trigger-Latch
5	105-9985	1	Link-Latch
6	105-9988	1	Lever-Cable, Deflector
7	105-9995	1	Screw-Shoulder
8	106-4479	1	Rod-Control, Chute
9	106-7280	1	Cap-Lever
10	106-7281	1	Lever-Chute Control, RH
11	106-7282	1	Lever-Chute Control, LH
12	107-3002	1	Washer-Nylon
13	106-7295	1	Plate-Friction
14	106-7310	1	Pawl-Latch
15	3290-456	1	Washer-Belleville
16	3296-29	1	Nut-Lock, NI
17	105-9986	1	Cover-Chute Lever, LH
18	106-7292	1	Cover-Chute Lever, RH
19	105-9989	1	Cable-Chute Release
20	105-9990	1	Cable-Control, Deflector



Engine Assembly

Ref	Part No.	Qty.	Description
1	3210-3	2	Screw-HH
2	3253-4	2	Washer-Lock
3	3256-23	2	Washer-Flat
4	107-3835	1	Guide-Belt
5	3212-8	1	Screw-HH
6	3253-6	1	Washer-Lock
7	3256-4	1	Washer-Flat
8	62-0940	1	Sheave-Half, Impeller
9	106-4498	1	Belt-V
10	106-7333	1	Pulley-Engine, Center
11	94-8812	1	V-Belt, Traction
12	106-7334	1	Sheave-Half, Traction
13		1	Engine-Tecumseh, Hmsk-100 159495y
14	32128-20	4	Nut-HF
15	289-34	1	Nipple-Pipe
16	288-2	1	Cap-Pipe

--	--	--	--



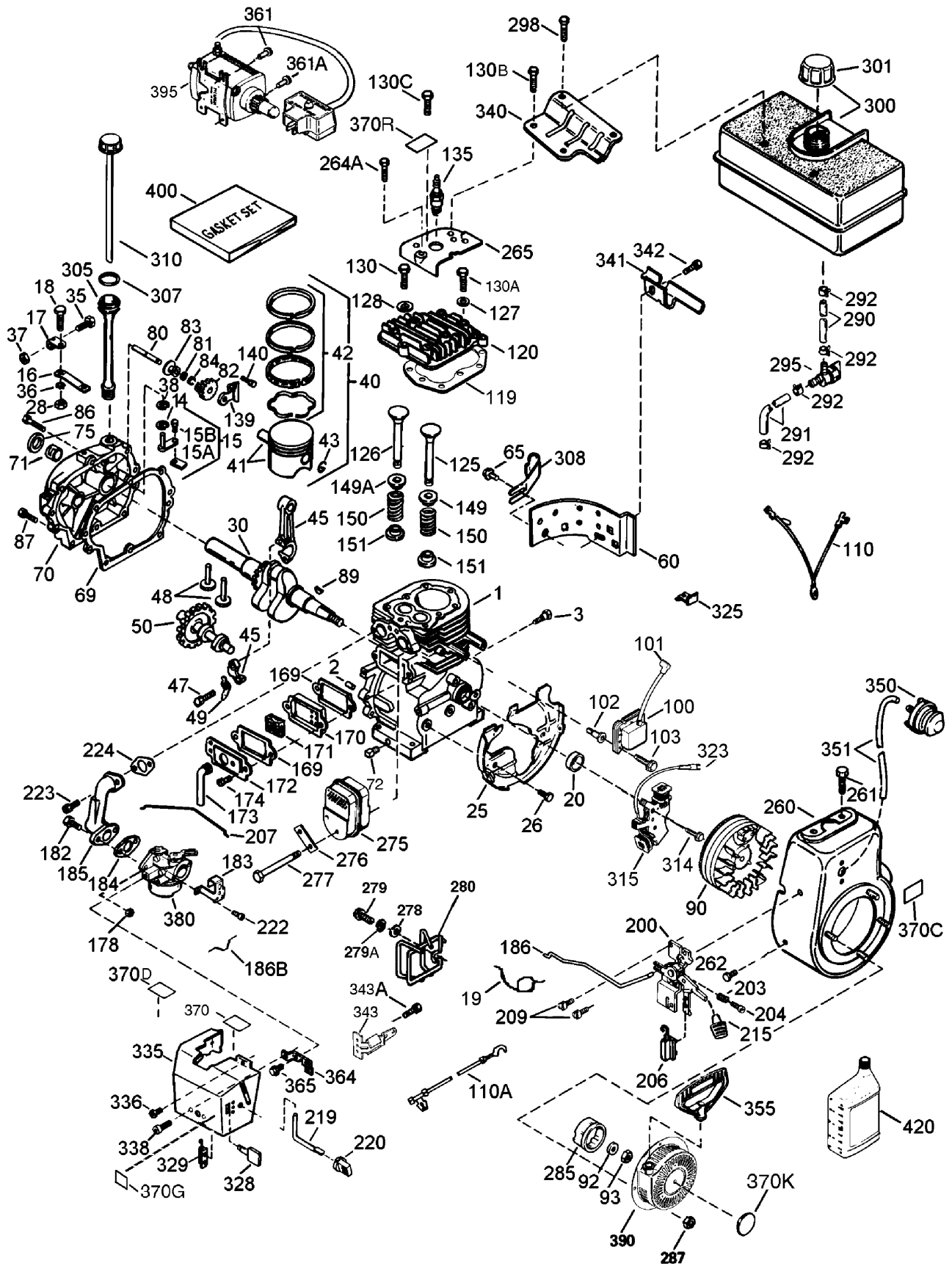
Carburetor Assembly No. 640054 Tecumseh HMSK-100 159495Y

Ref	Part No.	Qty.	Description
①	631776A	1	Throttle Shaft And Lever ASM
②	631970	1	Spring-Throttle Return
⑥	631778	1	Shutter-Throttle
⑦	650506	2	Screw-Shutter
⑩	632112	1	Choke Shaft And Lever ASM
⑭	632174	1	Shutter-Choke
⑮	630735	1	Spring-Choke Positioning
⑯	632164	1	Fitting-Fuel
⑰	650417	1	Screw-Idle Speed
⑱	630766	1	Spring-Tension
⑳	640016	1	Screw-Idle Restrictor
⑳A	640053	1	Cap-Idle Restrictor Screw
㉕	631951	1	Float Bowl (Incl. Ref. # 32 And 33)
㉗	631024	1	Shaft-Float
㉘	632019	1	Float
㉙	631028	1	O-Ring, Float Bowl
㉚	631021	1	Inlet Needle, Seat And Spring Clip ASM (Incl. Ref. # 31)
㉛	631022	1	Clip-Spring
㉜	27136A	1	Bowl Drain ASM (Incl. Ref. # 33)
㉝	27554	1	Gasket-Drain Plunger
㉞	640005	1	Tube-Main Nozzle
㉟	632547	2	O-Ring, Main Nozzle Tube
㊱	640012	1	Nut-High Speed, Bowl

Ref	Part No.	Qty.	Description
㊲	27110	1	Gasket
㊳	630748	1	Plug-Welch, Idle Mixture Well
㊴	631027	1	Plug-Welch, Vent

Engine Assembly No. 1

Tecumseh HMSK-100 159495Y

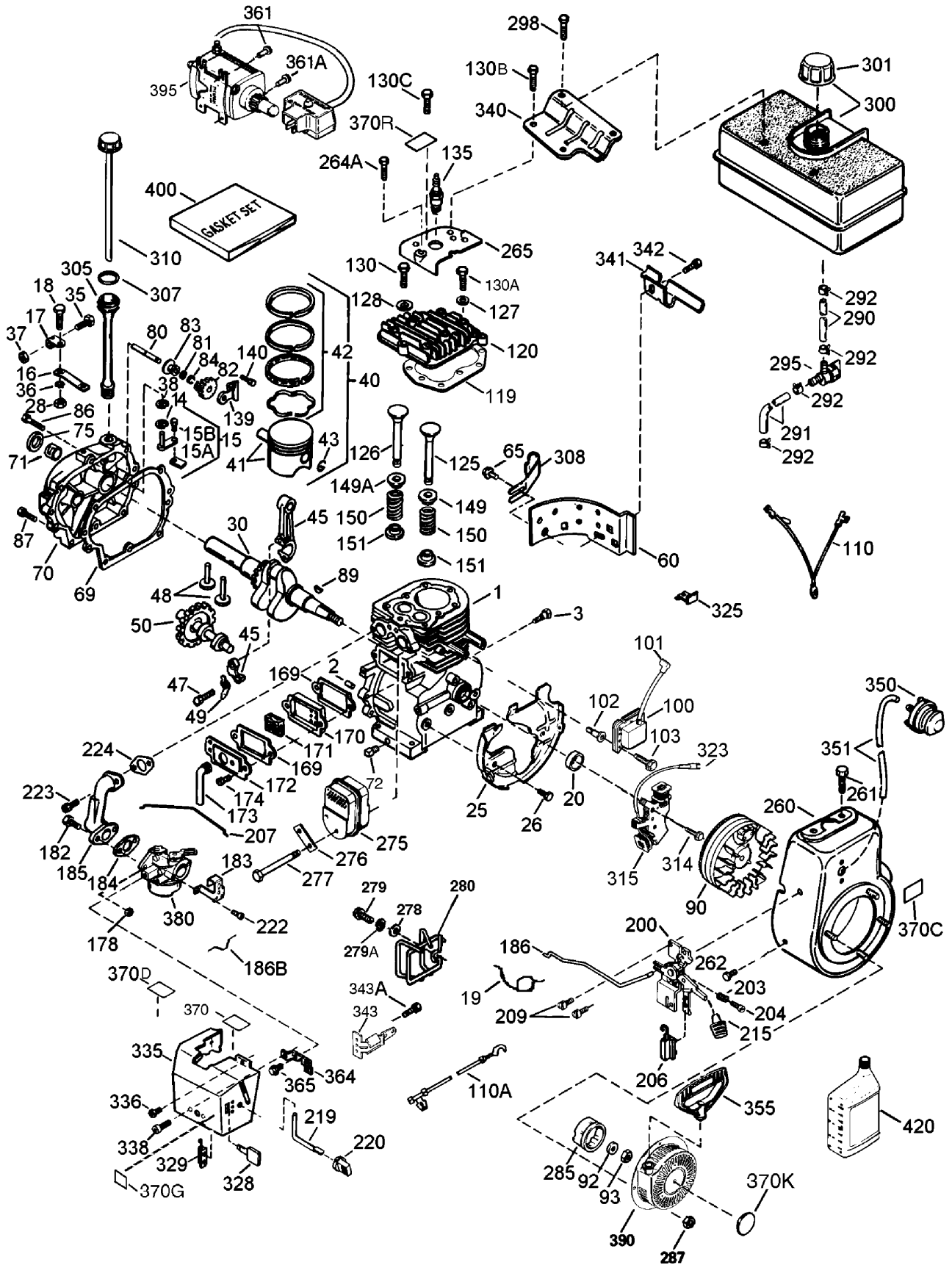


Engine Assembly No. 1

Tecumseh HMSK-100 159495Y

Ref	Part No.	Qty.	Description	Ref	Part No.	Qty.	Description
21	35371	1	Cylinder ASM (Incl. Ref. # 2, 20 And 72)	281	651080	1	Washer
22	27652	2	Pin-Dowel	282	37588	1	Governor Gear Asm (Incl. Ref. #81)
23	650820	2	Screw, 1/4-20 X 1/2"	283	30588A	1	Spool-Governor
214	28277	1	Washer	284	29193	1	Ring-Retaining
215	30699C	1	Governor Rod ASM (Incl. Ref. #15a And 15b)	286	650833	7	Screw, 1/4-20 X 1-3/16"
215A	30700	1	Yoke-Governor	287	650832	1	Screw, 1/4-20 X 1-11/16"
215B	650494	1	Screw, 6-40 X 5/16"	289	32589	1	Key-Flywheel
216	33454A	1	Lever-Governor	290	611093	1	Flywheel ASM (W/ring Gear)
217	29916	1	Clamp-Lever, Governor	292	650880	1	Washer-Lock
218	651028	1	Screw-Torx, T-15 (8-32 X 3/8")	293	650881	1	Nut-Flywheel
219	34663	1	Spring-Throttle	2100	35135A	1	Solid State Ignition (Incl. Ref. #101)
220	35319	1	Seal-Oil	2101	610118	1	Cover-Spark Plug
225	37707A	1	Baffle-Housing, Blower	2102	651024	2	Stud-Mounting, Solid State
226	650561	2	Screw, 1/4-20 X 5/8"	2103	651007	2	Screw-Torx, T-15 (10-24 X 15/16")
228	30322	1	Nut-Lock, 10-32	2110	35187	1	Wire-Ground
230	35571A	1	Crankshaft	2110A	37047	1	Wire-Ground
235	29826	1	Screw, 10-32 X 3/4"	2119	36451	1	Gasket-Cylinder Head
236	29918	1	Washer-Lock	2120	36449	1	Cylinder Head ASM
237	29216	1	Nut-Lock, 10-32	2125	27878A	1	Exhaust Valve (Std.) (Incl. Ref. #151)
238	29642	1	Ring-Retaining	2125	27880A	1	Exhaust Valve (1/32" Os) (Incl. Ref. #151)
240	35776A	1	Piston, Pin And Ring Set (Std.)	2126	34035	1	Intake Valve (Std.) (Incl. Ref. #151)
240	35777A	1	Piston, Pin And Ring Set (.010" Os)	2126	34036	1	Intake Valve (1/32" Os) (Incl. Ref. #151)
240	35778A	1	Piston, Pin And Ring Set (.020)	2127	650691	5	Washer
241	35773A	1	Piston And Pin Asm (Std.) (Incl. Ref. #43)	2128	650690	3	Washer-Belleville
241	35774A	1	Piston And Pin Asm (.010" Os) (Incl. Ref. #43)	2130	6021A	4	Screw, 5/16-18 X 1-7/16"
241	35775A	1	Piston And Pin Asm (.020" Os) (Incl. Ref. #43)	2130A	650727	2	Screw, 5/16-18 X 1-25/32"
242	35779	1	Ring Set (Std.)	2130B	650713	2	Screw
242	35780	1	Ring Set (.010" Os)	2130C	650694A	3	Screw, 5/16-18 X 2"
242	35781	1	Ring Set (.020)	2135	35395	1	Spark Plug (Rn4c)
243	35772	2	Piston Pin Retaining Ring	2139	33369	1	Bracket-Gear, Governor
245	36898	1	Connecting Rod Asm (Incl. Ref. #47 And 49)	2140	650836	2	Screw, 10-24 X 1/2"
247	651033	2	Bolt-Rod, Connecting	2149	27882	1	Cap-Valve Spring
248	34034	2	Lifter-Valve	2149A	35862	1	Cap-Valve Spring
249	36896	1	Dipper-Oil	2150	27881	2	Spring-Valve
250	35375	1	Camshaft (Mcr)	2151	32581	2	Keeper-Spring, Valve
260	33273A	1	Extension-Blower Housing	2169	27896A	2	Gasket-Cover, Valve
265	650128	1	Screw, 10-24 X 1/2"	2170	28423	1	Body-Breather
269	37342	1	Gasket-Cover, Cylinder	2171	28424	1	Element-Breather
270	35376A	1	Cylinder Cover ASM (Incl. Ref. #71, 75 And 80)	2172	28425	1	Cover-Valve
271	35377	1	Bushing-Crankshaft	2173	35350	1	Tube-Breather
272	27642	1	Plug-Oil Drain	2174	650128	2	Screw, 10-24 X 1/2"
275	35319	1	Seal-Oil	2178	29752	2	Nut And Lockwasher ASM
280	37587	1	Shaft-Governor	2182	30088A	2	Screw-Torx, T-30 (1/4-20 X 27/32")
				2183	34587A	1	Bracket-Choke
				2184	33263	1	Gasket-Carburetor To Intake Pipe
				2185	33877	1	Pipe-Intake

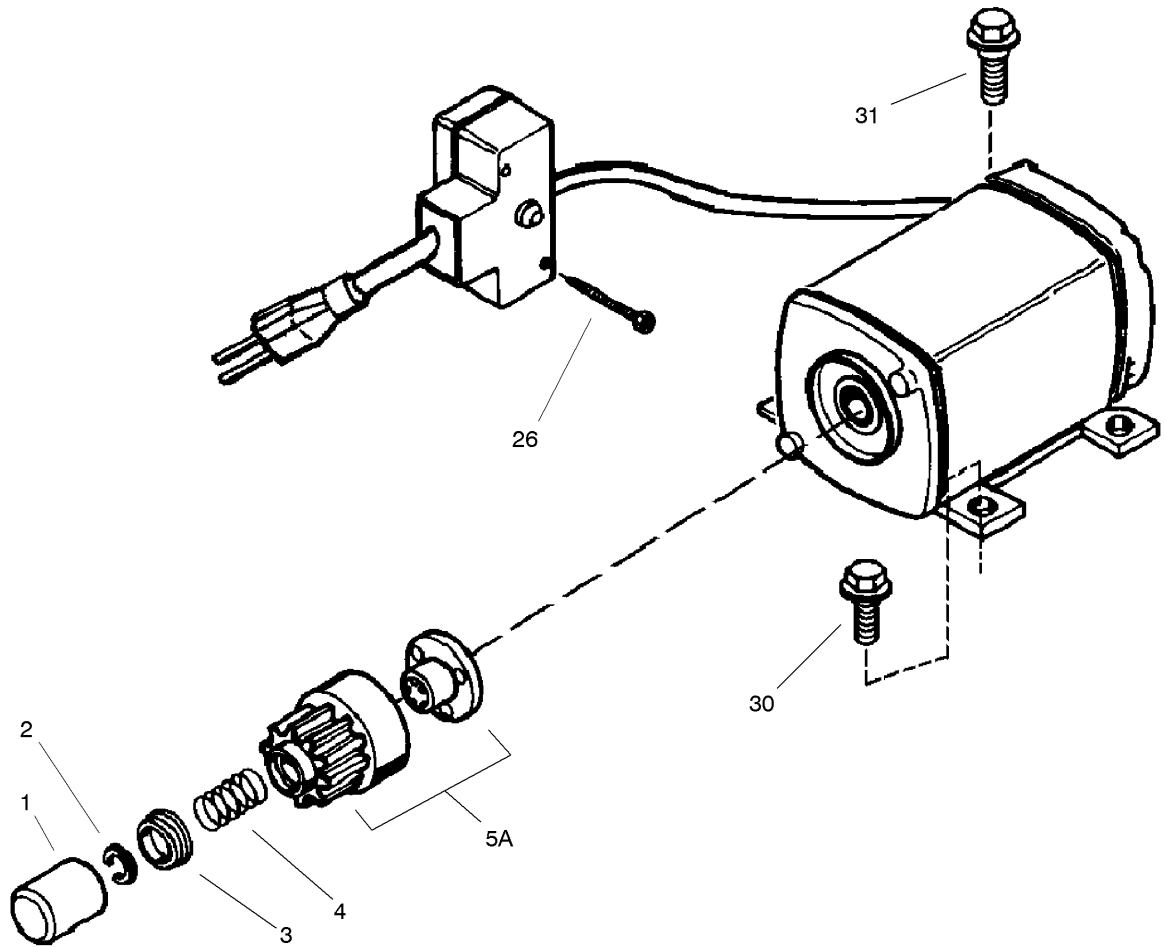
Engine Assembly No. 2 Tecumseh HMSK-100 159495Y



Engine Assembly No. 2

Tecumseh HMSK-100 159495Y

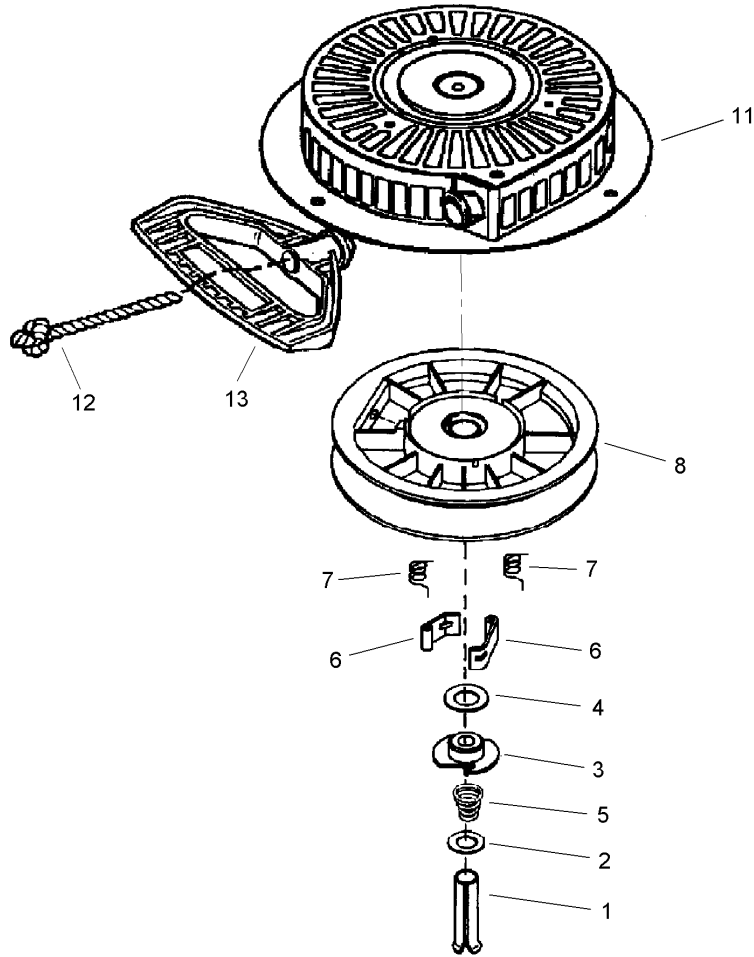
Ref	Part No.	Qty.	Description	Ref	Part No.	Qty.	Description
②186	34667	1	Link-Governor	②329	610973	1	Terminal
②186B	36652	1	Spring-Choke	②335	36547	1	Cover-Carburetor
②200	34677	1	Control Bracket (Incl. Ref. #19, 203, 204 And 206)	②336	650765	1	Screw, 10-32 X 1/2"
②203	31342	1	Spring-Compression	②338	28942	2	Screw, 10-32 X 3/8"
②204	651029	1	Screw-Torx, 5-40 X 7/16"	②340	34155	1	Bracket-Fuel Tank
②206	610973	1	Terminal	②341	34154	1	Bracket-Fuel Tank
②207	33878	1	Link-Throttle	②342	650561	1	Screw, 1/4-20 X 5/8"
②209	650821	2	Screw	②343	35079A	1	Key Switch Bracket ASM (Incl. Ref. #343a)
②215	35440	1	Knob-Control	②343A	651060	1	Screw, 10-32 X 23/64"
②219	34586	1	Rod-Choke	②350	570682A	1	Primer ASM
②220	35438	1	Knob-Choke	②351	32180C	1	Line-Primer
②222	28820	2	Screw, 10-32 X 1/2"	②355	590574	1	Handle-Grip, Mitten
②223	650378	2	Screw-Torx, T-30 (5/16-18 X 1-1/8")	②361	650990	2	Screw-Torx, T-30 (1/4-20 X 15/32")
②224	27915A	1	Gasket-Intake Pipe	②361A	650819	2	Screw
②260	35447A	1	Housing-Blower	②364	37659	1	Bracket-Carburetor Cover
②261	650788	2	Screw, 1/4-20 X 3/4"	②365	650767	2	Screw, 8-32 X 27/64"
②262	651084	2	Screw-Torx, T-40 (5/16-24 X 21/32")	②370	36261	1	Decal-Instruction
②264A	650802	1	Screw-Torx, T-30 (1/4-20 X 1/2")	②370C	36501	1	Decal-Primer
②265	33272D	1	Cover-Cylinder Head	②370D	36534	1	Decal-Caution
②275	35056	1	Muffler	②370G	35077	1	Decal-Instruction
②276	31588	1	Plate-Locking	②370K	36695	1	Decal-Starter
②277	651002	2	Screw, 5/16-18 X 4-3/16"	②370R	37119	1	Decal-Warning
②278	650147	2	Washer-Flat	②380	640054	1	Carburetor ASM (Incl. Ref. #184)
②279	650980	2	Screw, 10-16 X 47/64"	②390	590749	1	Rewind Starter ASM
②279A	650979	2	Lockwasher	②395	37102	1	Electric Motor ASM (220 Volt)
②280	36294	1	Heat Shield ASM (Incl. Ref. #278, 279 And 279a)	②400	36452A	1	Gasket Set
②285	35985B	1	Cup-Starter	②420	730226A	1	Sae 5w30 4-Cycle Engine Oil (Quart)
②287	29752	4	Nut And Lockwasher ASM				
②290	29774	1	Line-Fuel				
②291	30705	1	Line-Fuel				
②292	26460	4	Clamp-Fuel Line				
②295	35857	1	Fuel Shut-Off Valve (Incl. Ref. #292)				
②298	650665	2	Screw, 1/4-15 X 3/4"				
②300	34156A	1	Fuel Tank ASM (Incl. Ref. #292 And 301)				
②301	36246	1	Cap-Fuel				
②305	35554	1	Tube-Oil Fill				
②307	35499	1	O-Ring				
②308	35540	1	Clip-Fill Tube				
②310	36205	1	Gage Oil ASM				
②314	650873	1	Screw, 1/4-20 X 3/4"				
②315	611111	1	Alternator Coil ASM (18 Watt) (Incl. Ref. #323)				
②323	611118	1	Terminal				
②325	29443	1	Clip-Wire				
②328	35062	2	Keys-Ignition				



220 Volt Electric Starter Assembly No. 37102 Tecumseh HMSK-100 159495Y

Ref	Part No.	Qty.	Description
①	33451	1	Cover-Dust
②	33842	1	Ring-Retainer
③	33430	1	Retainer-Spring
④	33431	1	Spring-Anti-Drift
⑤A	37050	1	Gear And Nut (Incl. Ref. #2)
②6	650819	2	Screw
②6	651032	2	Screw, 12-16 X 5/8"
③0	30063	2	Screw-Torx, T-30 (1/4-20 X 1/2")
③1	650820	2	Screw, 1/4-20 X 1/2"

--	--	--	--



Rewind Starter Assembly No. 590749 Tecumseh HMSK-100 159495Y

Ref	Part No.	Qty.	Description				
1	590599A	1	Spring Pin (Incl. Ref. #4)				
2	590600	1	Washer				
3	590679	1	Retainer				
4	590601	1	Washer				
5	590678	1	Spring-Brake				
6	590680	2	Dog-Starter				
7	590412	2	Spring-Dog				
8	590682	1	Pulley And Rewind Spring ASM				
11	590750A	1	Starter Housing ASM				
12	590535	1	Rope-Starter (Length 98" X 9/64" Dia)				
13	590574	1	Handle-Grip, Mitten				

NOTES

NOTES

NOTES

