



## 1028LE Power Max Snowthrower

Model No. 38645 - 240000001 and up.

### Parts Catalog

---

#### Ordering Replacement Parts

To order replacement parts, please supply: the part number, the quantity, and the description of each part desired.

#### Understanding Reference Numbers

Each identified part in an illustration has a reference number. The reference number for a part also appears in the parts list, along with other information about the part.

This catalog uses two special reference number formats, one to indicate parts in a service assembly and another to indicate the quantity of a given part in an illustration.

#### Service Assembly Reference Numbers

Parts in service assemblies have reference numbers in the form **a:b**. The **a** represents the reference number of the entire service assembly and the **b** represents a sequential number unique to each part within the service assembly.

For example, a wheel assembly might be identified by reference number 6, the tire by **6:1**, the valve by **6:2**, and the wheel by **6:3**. When you order the assembly identified by reference number 6, you receive all parts identified by reference numbers 6:1, 6:2, and 6:3. However, you may also order any part individually. Reference numbers of this type appear in illustrations and in part lists.

#### Reference Numbers Indicating Quantity

In an illustration, if a reference number indicates more than one part, the reference number has the form **nX y**. The **n** represents the quantity of the part, the **X** is the multiplication symbol, and the **y** represents the reference number.

For example, in an illustration, the reference number **2X 37** means that two of the parts identified by reference number 37 are indicated.

# Part Description Abbreviations

Part descriptions in this catalog may include the following abbreviations.

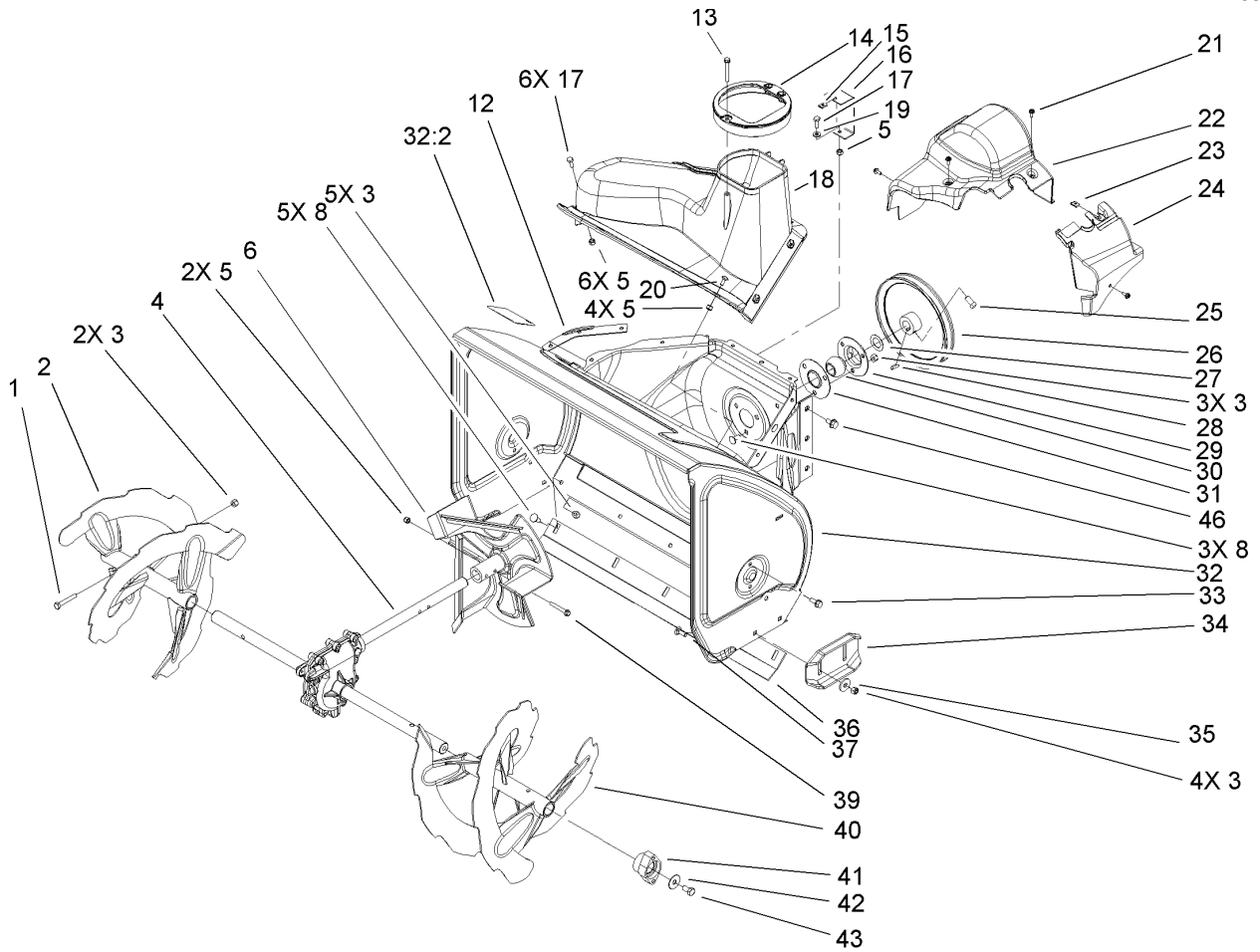
AR. .... as required	HYD. .... hydraulic
ASM. .... assembly	INC. .... incorporated
CARR. .... carriage	LH. .... left hand
DEG. .... degrees	NI. .... nylon insert
FH. .... flat head	PPH. .... phillips pan head
GA. .... gauge	PTH. .... phillips truss head
HF. .... hex flange	PTO. .... power take off
HH. .... hex head	RH. .... right hand
HHF. .... hex head flange	SFH. .... slotted fillister head
HHFTF. .... hex head flange thread forming	SHH. .... slotted hex head
HJ. .... hex jam	SHWH. .... slotted hex washer head
HLH. .... hex lag head	SPH. .... slotted pan head
HOC. .... height-of-cut	SQH. .... square head
HS. .... hex	SRH. .... slotted round head
HSBH. .... hex socket button head	STD. .... standard
HSFH. .... hex socket flat head	TAP. .... self tapping
HS. .... hex socket head	TTH. .... torx truss head
HWH. .... hex washer head	WH. .... wing head
HWHTF. .... hex washer head thread forming	

## Footnotes

- ❶ Not serviced separately
- ❷ Obtain parts from your local Tecumseh dealer

## Contents

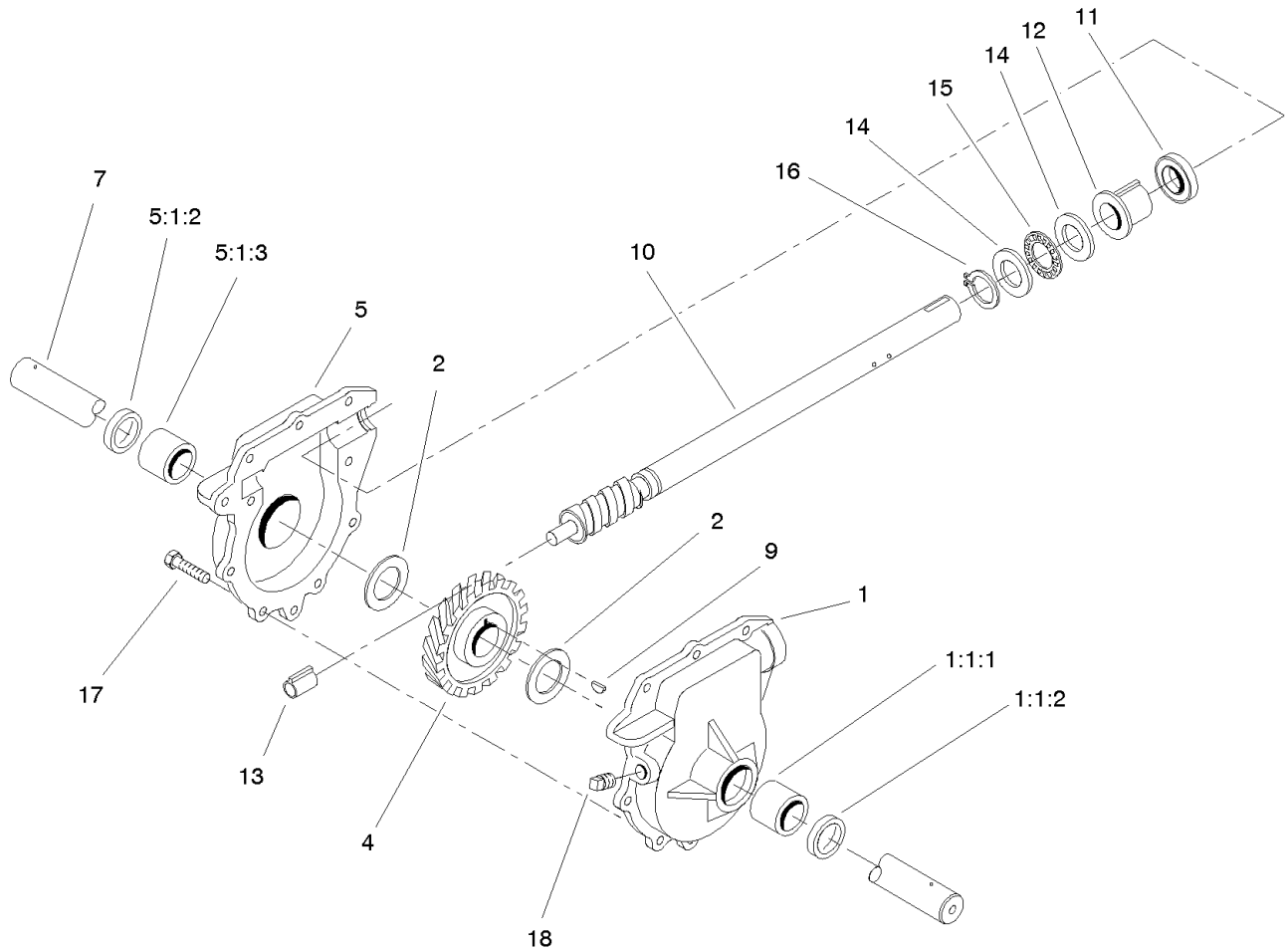
Description	Page	Description	Page
Auger and Housing Assembly	..... 3	Engine Assembly Tecumseh Model No. Hmsk100-159495y (continued)	..... 16
28in Auger Gearcase Assembly No. 106-7254	..... 4	Recoil Starter Part No. 590749a	..... 18
Chute Assembly	..... 5	Electric Starter (220 Volt) Part No. 37102	..... 19
Chain Drive Assembly	..... 6	Rewind Starter Assembly No. 590733 (Optional) Tecumseh HMSK-80 155723	..... 20
Frame Assembly	..... 7		
Handle Assembly	..... 9		
Handle and Control Assembly	..... 10		
Lever and Chute Control Assembly	..... 11		
Engine Assembly	..... 12		
Carburetor Part No. 640054	..... 13		
Engine Assembly Tecumseh Model No. Hmsk100-159495y	..... 14		



## Auger and Housing Assembly

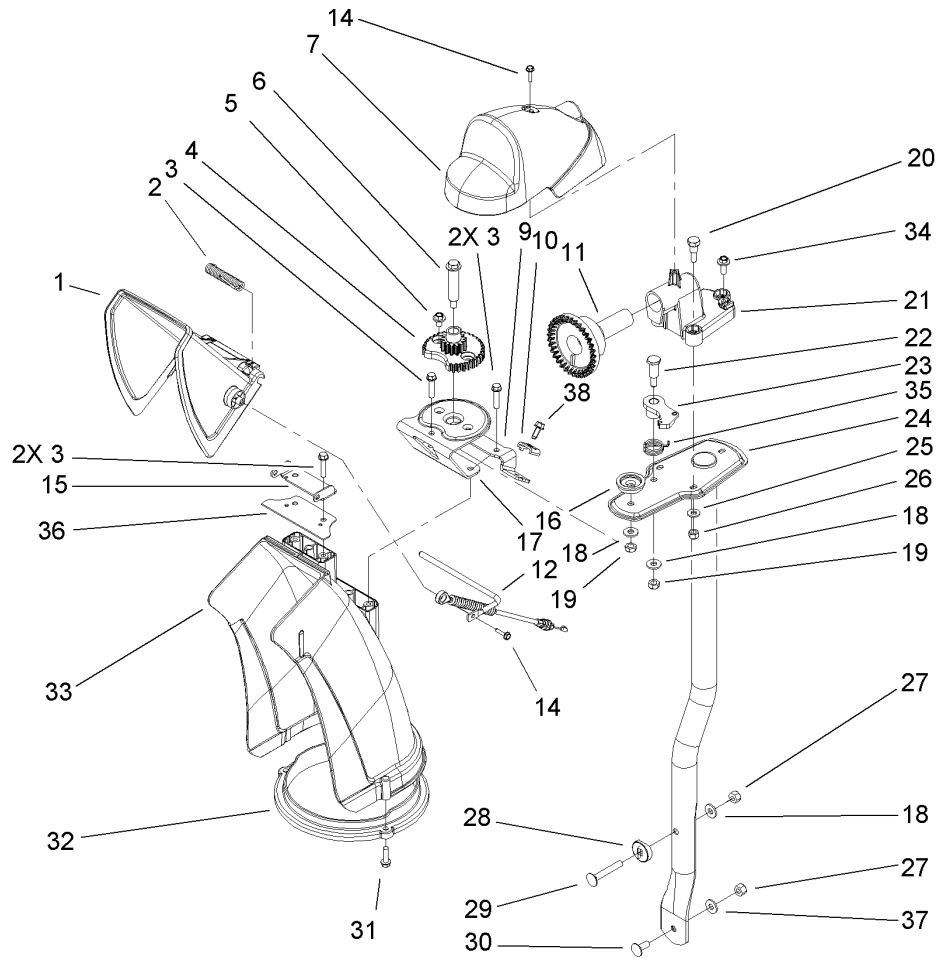
Ref	Part No.	Qty.	Description
1	322-10	2	Screw-HH
2	106-7291-03	1	Auger-Rh, 28in
3	3296-29	14	Nut-Lock, NI
4	106-7254	1	28in Auger Gearcase ASM
5	3296-42	13	Nut-Lock, NI
6	106-4576-03	1	Impeller ASM
8	3230-23	8	Screw-CARR
12	107-1017-03	1	Seal-Cover Flange
13	107-3003	1	Screw-Plastite
14	107-3006	1	Guide-Chute
15	107-1013	1	Nut-Speed, U-Type
16	107-1014-03	1	Bracket-Cover, Clip Nut
17	321-4	7	Screw-HH
18	107-3007	1	Cover
19	3256-22	1	Washer-Flat
20	3229-1	4	Screw-CARR
21	32144-112	4	Screw-HWHTF
22	107-1001	1	Cover-Belt
23	701493	1	Nut-Speed
24	107-1016	1	Cover-Belt Extension
25	3242-4	2	Screw-Set, SQH
26	62-1300	1	Pulley-Impeller
27	252-80	1	Washer-Thrust
28	3257-23	1	Key-Woodruff

Ref	Part No.	Qty.	Description
29	26-6110	1	Flange-Cup, Bearing
30	63-3450	1	Bearing-Ball
31	26-6120	1	Flange-Cup, Bearing
32	107-3824	1	Housing-Auger, 28" ASM W/ Decal Ce
32:2	107-3040	1	Decal-Auger Danger
33	32144-70	4	Screw-HH
34	106-4588-01	2	Skid
35	52-2861	4	Washer
36	106-4573-01	1	Scraper-Fixed, 28in
37	3230-16	4	Screw-CARR
39	321-44	2	Screw-HHF
40	106-7301-03	1	28in LH Auger ASM
41	106-4570	2	Auger-Bearing
42	3-0750	2	Washer
43	323-4	2	Screw-HH
46	32144-14	6	Screw-HWH



## 28in Auger Gearcase Assembly No. 106-7254

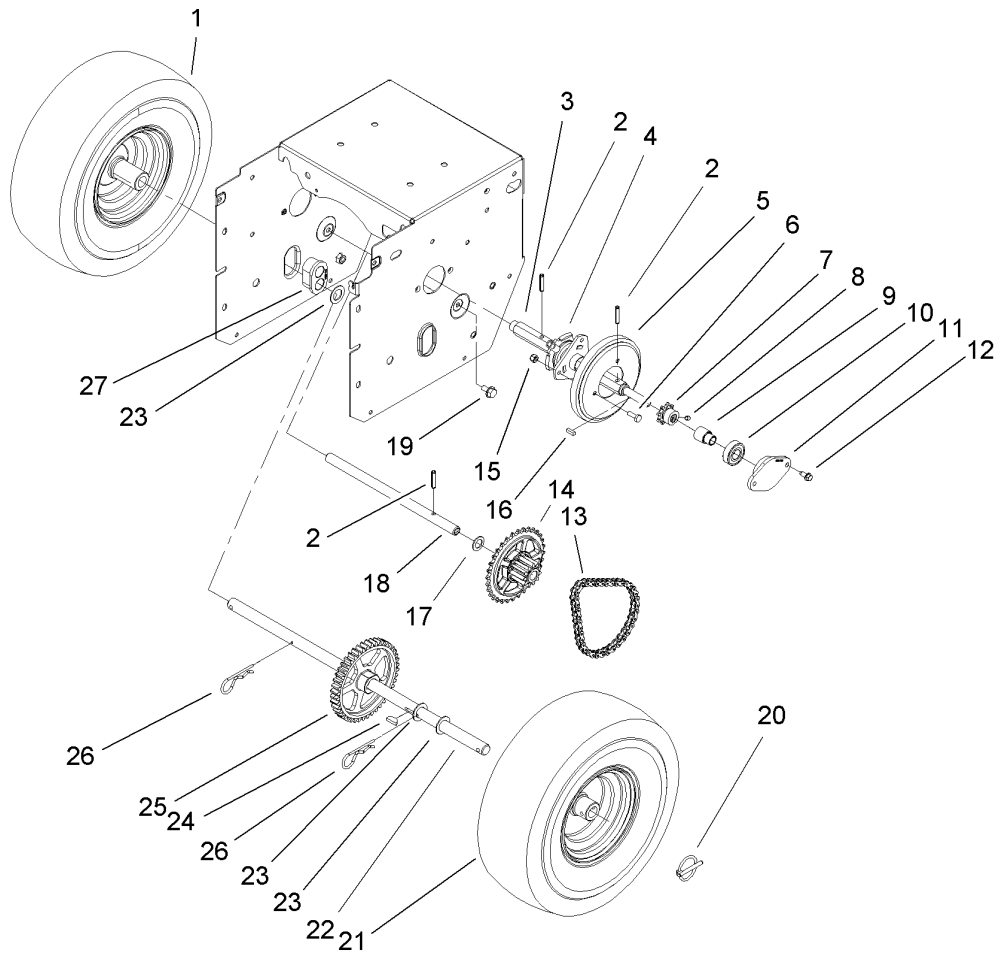
Ref	Part No.	Qty.	Description			
1	74-1570	1	LH Auger Gearcase ASM			
● 1:1		1	LH Auger Gearcase ASM			
1:1:1	256-237	1	Bushing			
1:1:2	7-0045	1	Seal-Oil			
2	252-71	2	Washer-Thrust			
4	62-0120	1	Gear-Helical			
5	74-1580	1	RH Auger Gearcase ASM			
● 5:1		1	RH Auger Gearcase ASM			
5:1:2	7-0045	1	Seal-Oil			
5:1:3	256-237	1	Bushing			
7	106-4421	1	Shaft-Auger, 28in			
9	3257-10	1	Key-Woodruff			
10	66-7811	1	Shaft-Impeller			
11	253-149	1	Seal-Oil			
12	37-6560	1	Bushing-Input			
13	62-1150	1	Bushing-Worm			
14	252-78	2	Bearing-Thrust			
15	252-76	1	Bearing-Thrust			
16	32151-33	1	Ring-Retaining, Ext			
17	32144-110	9	Screw-HWH			
18	281-1	1	Plug-Pipe, SQH			



## Chute Assembly

Ref	Part No.	Qty.	Description
1	106-7309	1	Deflector-Chute, Ce
2	106-4594	1	Spring-Torsion
3	46-8092	5	Screw-Plastite
4	106-4472	1	Gear-Chute
5	46-6810	2	Screw And Washer ASM
6	100-9880	1	Bolt-Shoulder
7	106-4585	1	Cover-Gear, Chute
9	106-7296	1	Bracket-Cable, Clamp
10	106-7297	1	Clamp-Cable
11	106-4471	1	Gear-Face
12	107-1021	1	Rod-Deflector
14	98-1375	2	Screw-HWH
15	106-7266	1	Bracket-Deflector
16	106-4582-03	1	Bracket-Support, Chute
17	106-4422	1	Spacer-Chute
18	3256-2	3	Washer-Flat
19	3296-47	2	Nut-Lock, NI
20	106-7276	3	Screw-Shoulder
21	106-7257	1	Mount-Gear, Face
22	63-2650	1	Screw-Shoulder
23	106-4476	1	Latch-Chute
24	106-7253-03	1	Tube-Support
25	3256-22	3	Washer-Flat
26	3296-42	3	Nut-Lock, NI

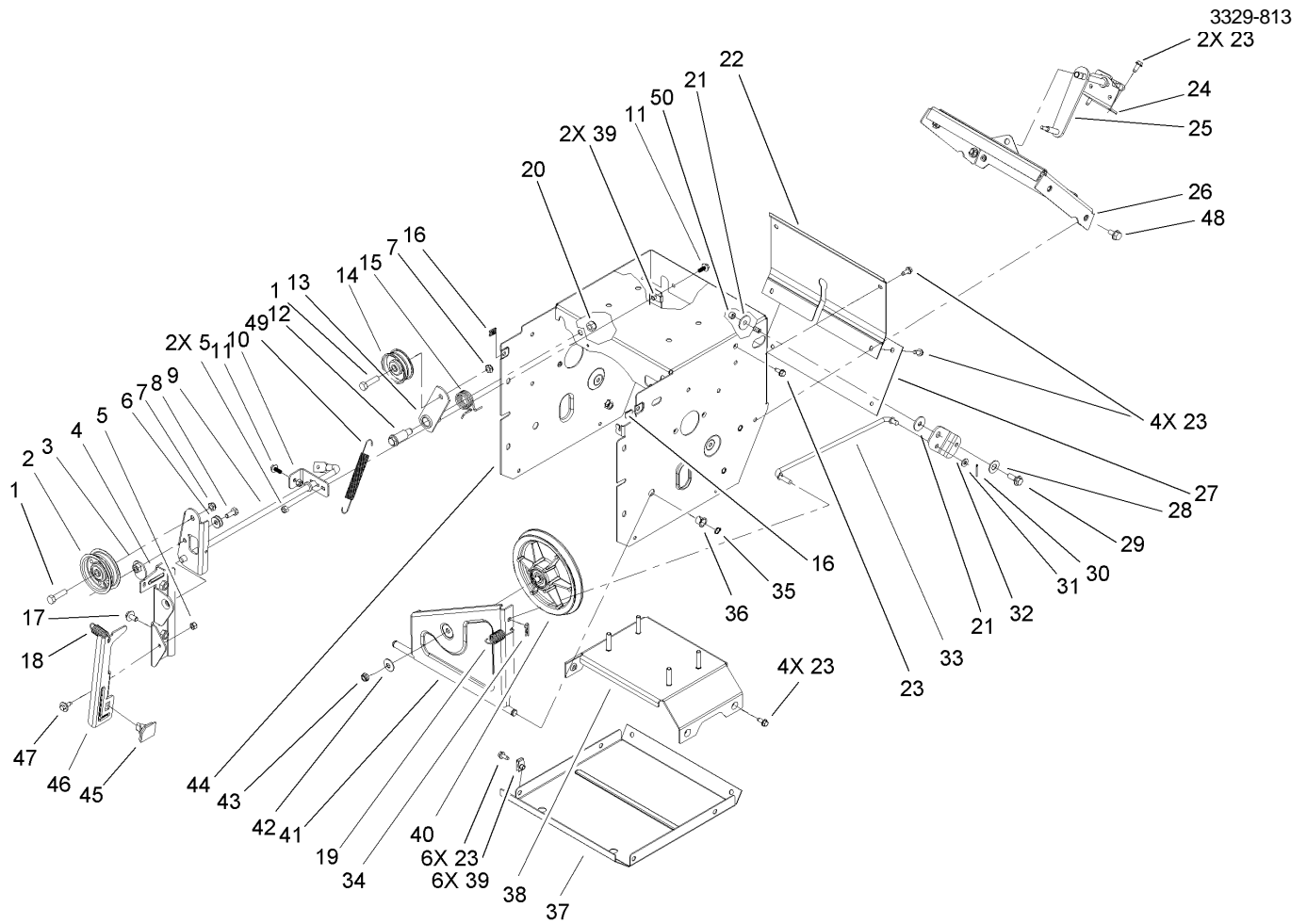
Ref	Part No.	Qty.	Description
27	3296-29	2	Nut-Lock, NI
28	106-7260	1	Washer-Curved
29	3230-5	1	Screw-CARR
30	3230-23	1	Screw-CARR
31	46-8091	3	Screw-HWH
32	105-9991	1	Ring-Chute
33	106-4440	1	Chute-Discharge
34	46-6811	1	Screw-HWH
35	106-4475	1	Spring-Torsion
36	107-1019	1	Seal-Chute
37	3290-456	1	Washer-Belleville
38	32144-10	1	Screw-HWH



## Chain Drive Assembly

Ref	Part No.	Qty.	Description
1	107-3042	1	Tire
1	107-3043	1	Rim-Tire
2	32121-9	3	Pin-Spring
3	106-4593	1	Shaft-Hex, Chain
4	106-4434	1	Trunion-Hex
5	106-4480	1	Wheel-Friction
6	321-4	3	Screw-HH
7	106-7317	1	Sprocket-8 Tooth
8	3245-32	2	Screw-HS
9	106-7250	1	Spacer-Bearing, Sleeve
10	100-1048	2	Bearing-Ball
11	106-7308	2	Retainer-Bearing
12	32144-10	4	Screw-HWH
13	106-7293	1	Chain-Roller
13	2710-6	1	Link-Connecting
14	106-7261	1	Sprocket ASM
15	3296-42	3	Nut-Lock, NI
16	94-8850	1	Key-Square
17	107-3041	1	Washer-Flat
18	106-4592	1	Shaft-Intermediate
19	32144-14	2	Screw-HWH
20	107-3039	2	Klik Pin ASM
21	107-3042	1	Tire
21	107-3043	1	Rim-Tire

Ref	Part No.	Qty.	Description
22	106-4449	1	Shaft-Axle
23	3-8664	3	Washer-Thrust
24	3257-7	1	Key-Woodruff
25	106-4572	1	Gear-Axle, 44 Tooth
26	3290-343	2	Pin-Hair
27	106-4558	2	Bearing-Axle

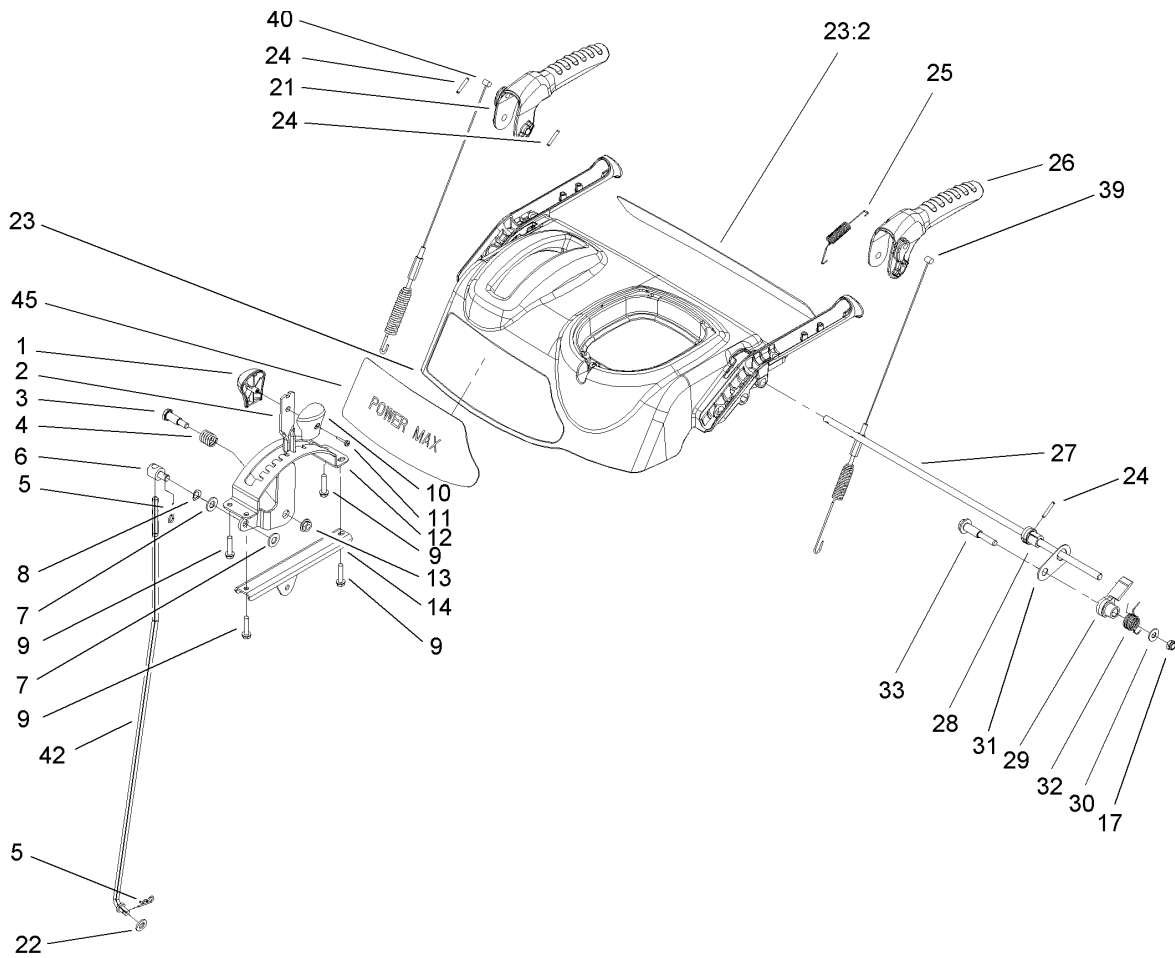


## Frame Assembly

Ref	Part No.	Qty.	Description
1	323-8	2	Screw-HH
2	92-7104	1	Pulley-Idler
3	107-1047	1	Nut ASM
4	107-1039	1	Bracket-Idler, Impeller
5	3296-42	3	Nut-Lock, NI
6	3290-456	1	Washer-Belleville
7	3296-59	2	Nut-Lock, NI
8	322-3	1	Screw-HH
9	106-7339-03	1	Auger Clutch ASM
10	106-7341	1	Bracket-Clutch Rear
11	99-6810	2	Screw-HH
12	107-1022	1	Bolt-Shoulder
13	106-7312	1	Arm-Idler, Traction
14	3-4244	1	Pulley-Idler
15	93-4816	1	Spring-Torsion, RH
16	107-1013	2	Nut-Speed, U-Type
17	3234-7	2	Screw-HHF
18	107-1045	1	Spring-Extension
19	107-1003	1	Spring-Extension
20	3296-76	1	Nut-Lock, NI
21	5-4460	2	Washer-Pivot
22	106-4556-01	1	Cover-Upper
23	32144-10	17	Screw-HWH
24	106-7325	1	Bracket-Shift Rod

Ref	Part No.	Qty.	Description
25	106-7268	1	Lever-Control, Traction
26	106-7342-01	1	Shift Plate ASM
27	106-7345-01	1	Cover-Lower
28	25-5640	1	Washer
29	27-0410	1	Screw-Shoulder
30	3272-4	1	Pin-Cotter
31	3256-23	1	Washer-Flat
32	107-1011	1	Bellcrank-Drive
33	106-4467	1	Link-Control, Speed
34	3290-307	1	Pin-Hair
35	32151-61	2	Ring-Retaining
36	256-257	2	Bushing-Nyliner
37	106-7330-01	1	Pan-Bottom
38	106-7315	1	Brace Frame ASM
39	107069	8	Clip
40	106-4500	1	Pulley-Traction
41	106-7274	1	Pulley Pivot ASM
42	3290-340	1	Washer-Belleville
43	3296-5	1	Nut-Lock, NI
44	106-4495-01	1	Frame-Traction
45	66-8060	1	Pad-Brake
46	107-1000	1	Arm-Brake
47	92-9698	1	Screw-Shoulder
48	32144-14	4	Screw-HWH

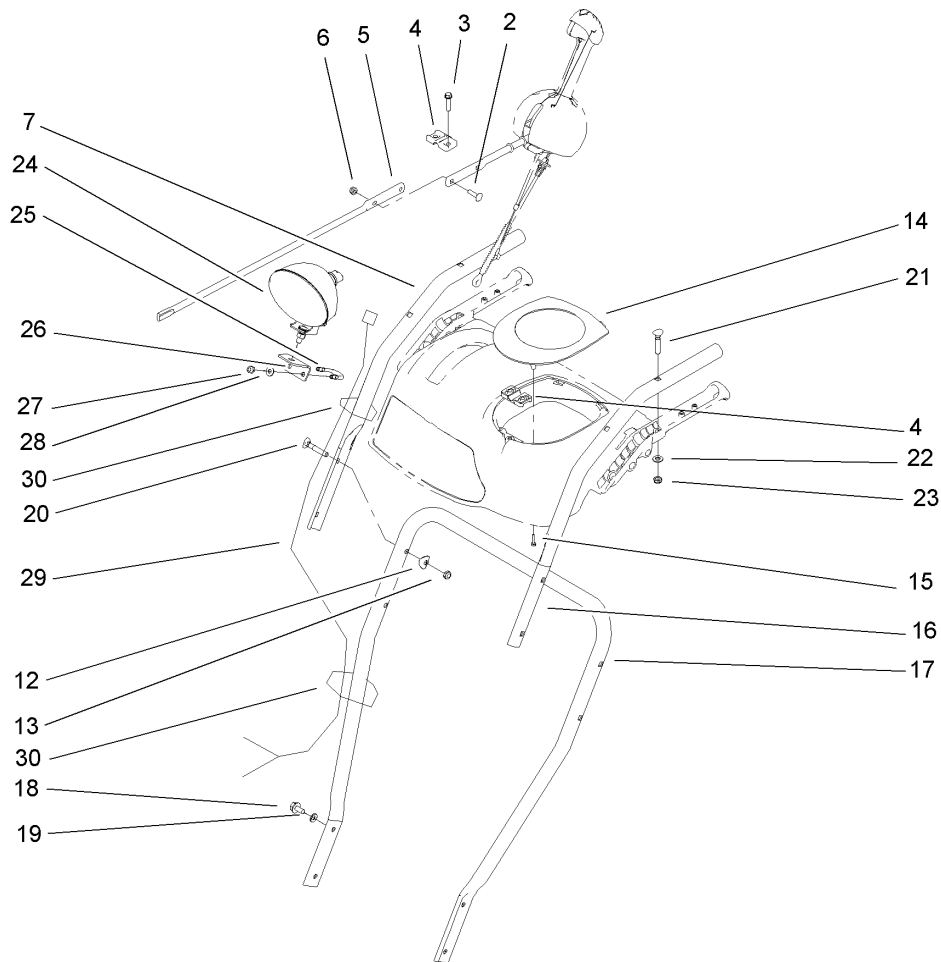




## Handle Assembly

Ref	Part No.	Qty.	Description
1	106-4423	1	Knob-Shift, RH
2	106-7278-03	1	Selector-Speed
3	63-2650	1	Screw-Shoulder
4	107-3017	1	Spring-Compression
5	3290-307	2	Pin-Hair
6	101161	1	Trunnion
7	3256-24	2	Washer-Flat
8	612586	1	Washer-Spring
9	46-8092	4	Screw-Plastite
10	105-9999	1	Knob-Shift, LH
11	94-4496	1	Screw-PPH
12	106-7277-03	1	Guide-Selector, Speed
13	32128-13	1	Nut-HF
14	106-7279-03	1	Mount-Selector, Speed
17	3296-72	1	Nut-Lock, NI
21	106-4413	1	Lever-Auger
22	3256-38	1	Washer-Flat
23	107-3826	1	Control Panel ASM
23:2	106-4523	1	Decal-Control Panel Back
24	32121-125	3	Pin-Spring
25	107-3001	1	Spring-Tension
26	106-4410	1	Lever-Traction
27	105-9996	1	Rod-Lockout
28	107-1043	1	Cam-Lockout

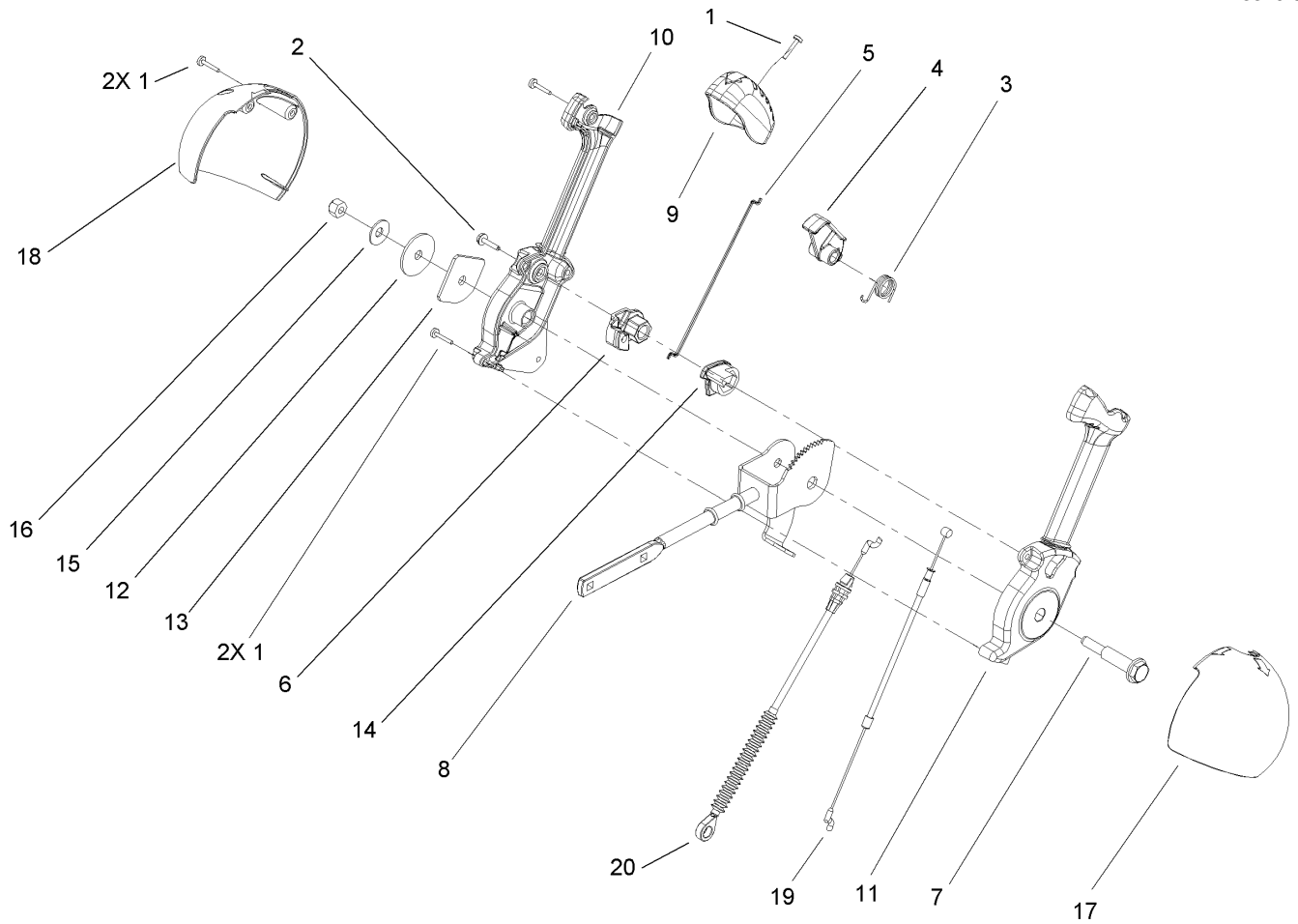
Ref	Part No.	Qty.	Description
29	107-1044	1	Latch-Lockout
30	98-3499	1	Washer-Flat
31	107-3000	1	Link-Lockout
32	105-9998	1	Spring-Torsion
33	106-4412	1	Screw-Shoulder
39	106-4563	1	Cable-Traction
40	106-4599	1	Cable-Auger
42	107-1005	1	Rod-Shift
45	107-3033	1	Decal-Control Panel, Tss



## Handle and Control Assembly

Ref	Part No.	Qty.	Description
2	3229-30	2	Screw-CARR
3	46-8092	2	Screw-Plastite
4	105-9987	2	Support-Rod
5	106-7283	1	Rod-Chute, Front
6	3296-73	2	Nut-Lock, NI
7	105-9994-03	1	Handle-Upper, RH
12	107-3844	4	Washer
13	3296-72	4	Nut-Lock, NI
14	106-4586	1	Cover-Panel, Control
15	94-4496	2	Screw-PPH
16	105-9993-03	1	Handle-Upper, LH
17	105-9981-03	1	Handle-Lower
18	32144-14	4	Screw-HWH
19	3290-475	4	Washer-Belleville
20	92-2260	4	Screw-Handle
21	107-3018	4	Screw-Handle
22	3256-70	4	Washer-Flat
23	3296-72	4	Nut-Lock, NI
24	106-4510	1	Headlamp-ASM
25	107-3024	1	Clamp-Light
26	107-1020-03	1	Bracket-Light
27	3296-73	2	Nut-Lock, NI
28	3256-1	2	Washer-Flat
29	106-4511	1	Harness-Wire

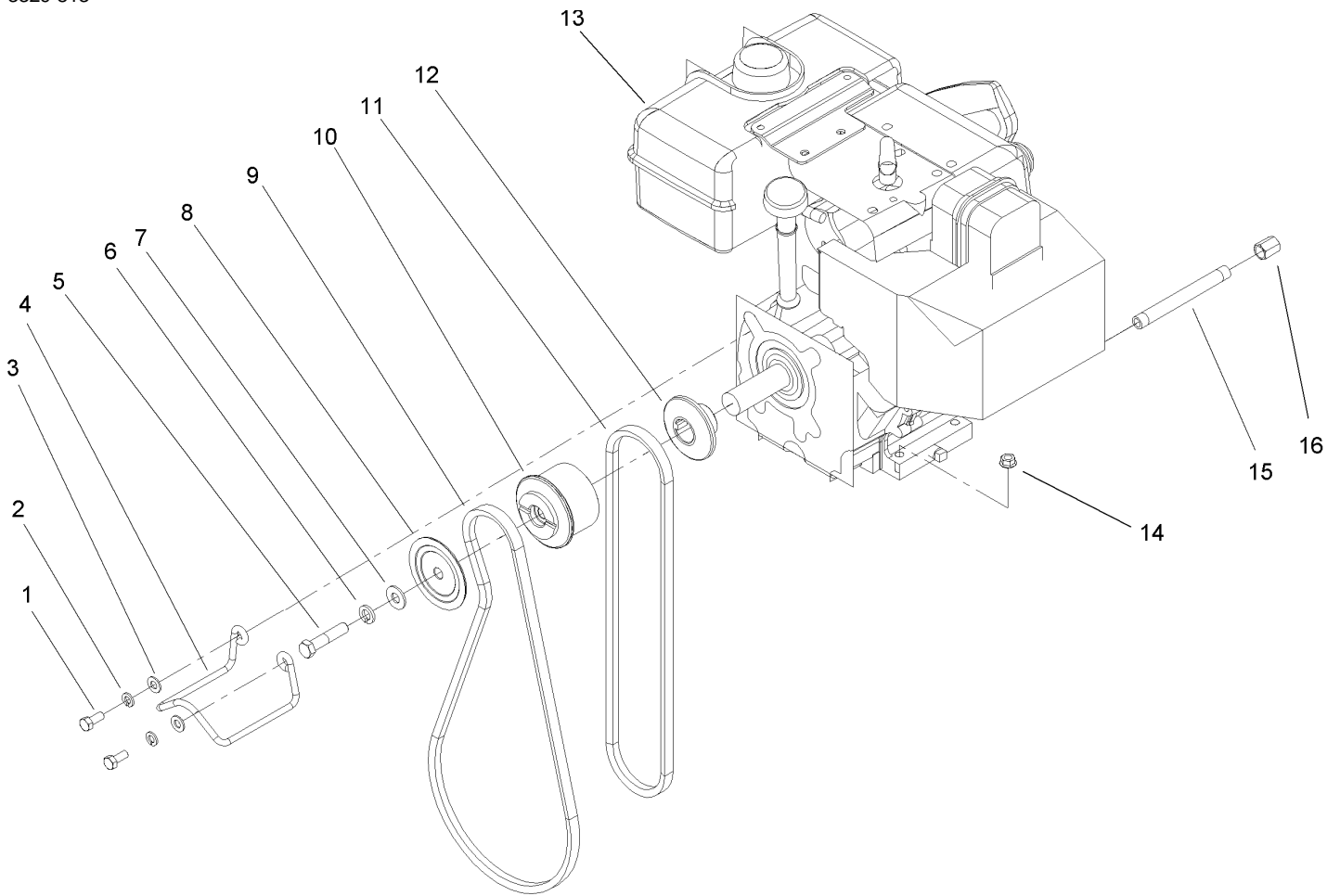
Ref	Part No.	Qty.	Description
30	614249	2	Strap-Tie



## Lever and Chute Control Assembly

Ref	Part No.	Qty.	Description
1	94-4496	5	Screw-PPH
2	98-1375	1	Screw-HWH
3	105-9982	1	Spring-Torsion
4	105-9984	1	Trigger-Latch
5	105-9985	1	Link-Latch
6	105-9988	1	Lever-Cable, Deflector
7	105-9995	1	Screw-Shoulder
8	106-4479	1	Rod-Control, Chute
9	106-7280	1	Cap-Lever
10	106-7281	1	Lever-Chute Control, RH
11	106-7282	1	Lever-Chute Control, LH
12	107-3002	1	Washer-Nylon
13	106-7295	1	Plate-Friction
14	106-7310	1	Pawl-Latch
15	3290-456	1	Washer-Belleville
16	3296-29	1	Nut-Lock, NI
17	105-9986	1	Cover-Chute Lever, LH
18	106-7292	1	Cover-Chute Lever, RH
19	105-9989	1	Cable-Chute Release
20	105-9990	1	Cable-Control, Deflector

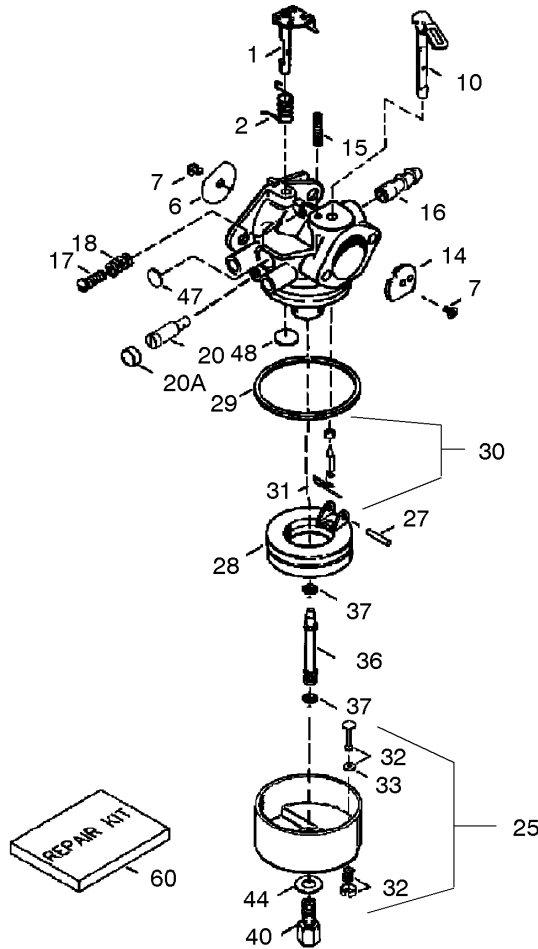
--	--	--	--



## Engine Assembly

Ref	Part No.	Qty.	Description
1	3210-3	2	Screw-HH
2	3253-4	2	Washer-Lock
3	3256-23	2	Washer-Flat
4	107-3835	1	Guide-Belt
5	3212-8	1	Screw-HH
6	3253-6	1	Washer-Lock
7	3256-4	1	Washer-Flat
8	62-0940	1	Sheave-Half, Impeller
9	106-4498	1	Belt-V
10	106-7333	1	Pulley-Engine, Center
11	94-8812	1	V-Belt, Traction
12	106-7334	1	Sheave-Half, Traction
13		1	Engine 10 Hp Tecumseh Model No. Hmsk100-159495y
14	32128-20	4	Nut-HF
15	289-34	1	Nipple-Pipe
16	288-2	1	Cap-Pipe

--	--	--	--



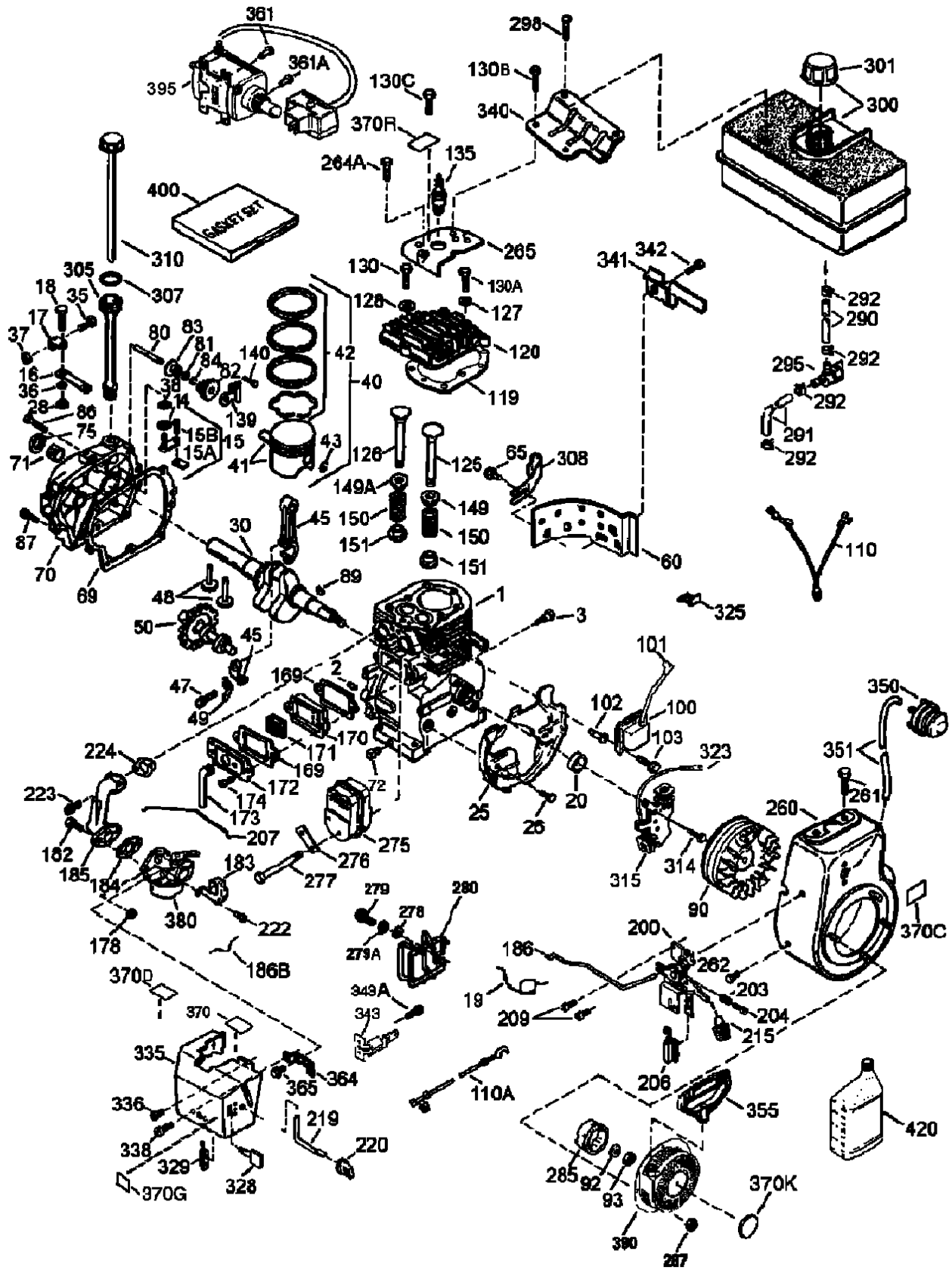
## Carburetor Part No. 640054

Ref	Part No.	Qty.	Description
①	631776A	1	Throttle Shaft And Lever ASM
②	631970	1	Spring-Throttle Return
⑥	631778	1	Shutter-Throttle
⑦	650506	2	Screw-Shutter
⑩	632112	1	Choke Shaft And Lever ASM
⑭	632174	1	Shutter-Choke
⑮	630735	1	Spring-Choke Positioning
⑰	632164	1	Fitting-Fuel
⑰	650417	1	Screw-Idle Speed
⑱	630766	1	Spring-Tension
⑳	640016	1	Screw-Idle Restrictor
⑳A	640053	1	Cap-Idle Restrictor Screw
㉕	631951	1	Float Bowl ASM (Incl. 32 & 33)
㉗	631024	1	Shaft-Float
㉘	632765	1	Float
㉙	631028	1	O-Ring, Float Bowl
㉚	631021	1	Inlet Needle, Seat, Clip (Incl. 31)
㉛	631022	1	Clip-Spring
㉜	27136A	1	Bowl Drain ASM
㉝	27554	1	Gasket-Drain Plunger
㉞	640005	1	Tube-Main Nozzle
㉟	632547	2	O-Ring, Main Nozzle Tube
㊱	640012	1	High Speed Bowl Nut
㊲	27110A	1	Bowl Nut Washer

Ref	Part No.	Qty.	Description
㊳	630748	1	Plug-Welch, Idle Mixture Well
㊴	631027	1	Plug-Welch, Vent
㊵	632760	1	Repair Kit

# Engine Assembly

## Tecumseh Model No. Hmsk100-159495y



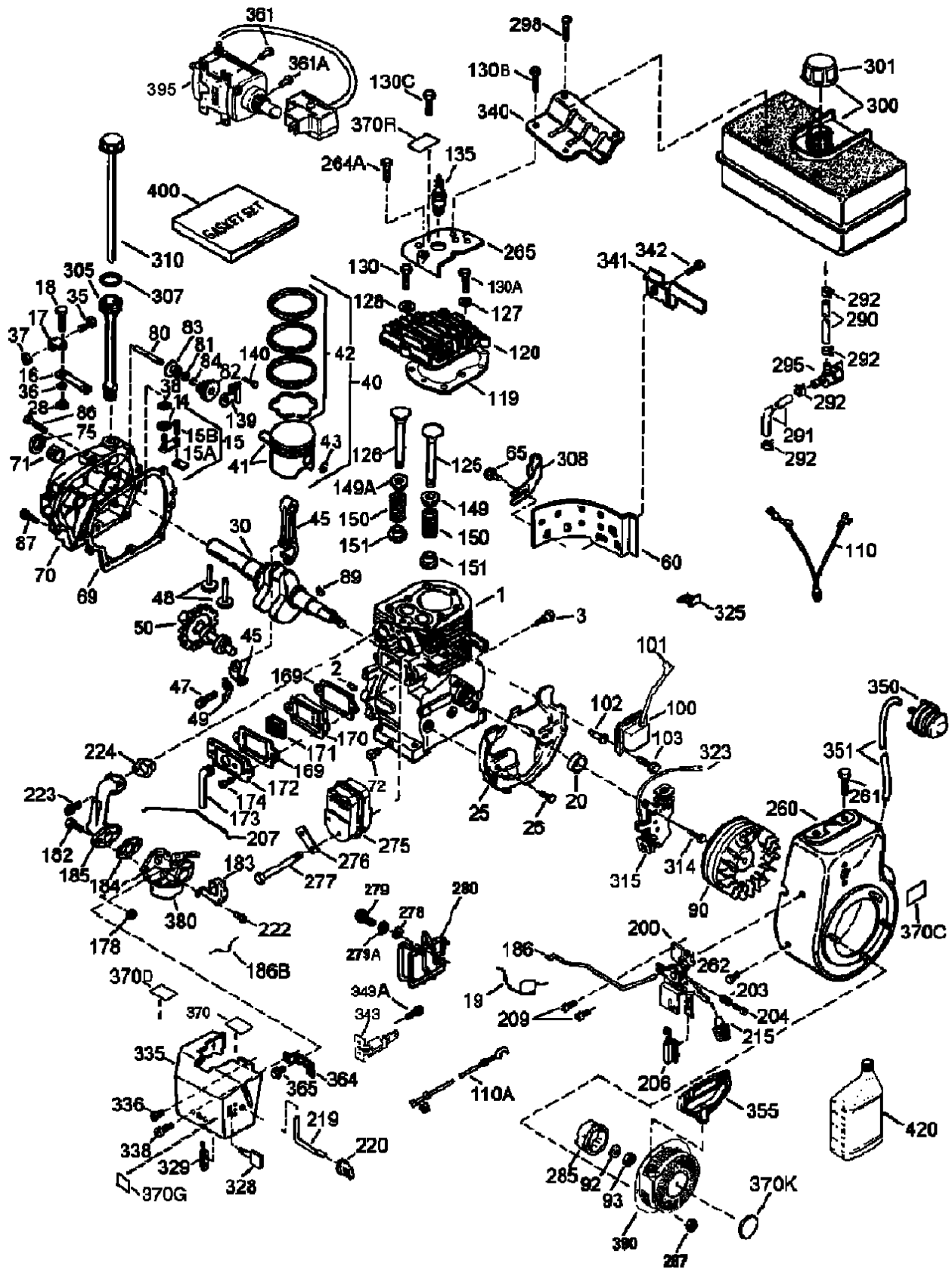
# Engine Assembly

## Tecumseh Model No. Hmsk100-159495y

Ref	Part No.	Qty.	Description	Ref	Part No.	Qty.	Description
② 1	35371	1	Cylinder (Incl. 2, 20 & 72)	② 86	650833	7	Screw, 1/4-20 X 1-3/16"
② 2	27652	2	Pin-Dowel	② 87	650832	1	Screw, 1/4-20 X 1-11/16"
② 3	650820	2	Screw, 1/4-20 X 1/2"	② 89	32589	1	Key-Flywheel
② 14	28277	1	Washer	② 90	611093	1	Flywheel (W/ring Gear)
② 15	30699C	1	Governor Rod (Incl. 15a & 15b)	② 92	650880	1	Washer-Lock
② 15A	30700	1	Yoke-Governor	② 93	650881	1	Nut-Flywheel
② 15B	650494	1	Screw, 6-40 X 5/16"	② 100	35135A	1	Solid State Ignition (Incl. 101)
② 16	33454A	1	Lever-Governor	② 101	610118	1	Cover-Spark Plug
② 17	29916	1	Clamp-Lever, Governor	② 102	651024	2	Stud-Mounting, Solid State
② 18	651028	1	Screwtorx, T-15 (8-32 X 3/8")	② 103	651007	2	Screw-Torx, T-15 (10-24 X 15/16")
② 19	34663	1	Spring-Throttle	② 110	35187	1	Wire-Ground
② 20	35319	1	Seal-Oil	② 110A	37047	1	Wire-Ground
② 25	37707A	1	Baffle-Housing, Blower	② 119	36451	1	Cylinder Head Gasket
② 26	650561	2	Screw, 1/4-20 X 5/8"	② 120	36449	1	Cylinder Head ASM
② 28	30322	1	Nut-Lock, 10-32	② 125	27878A	1	Exhaust Valve (Std.) (Incl. 151)
② 30	35571A	1	Crankshaft	② 125	27880A	1	Exhaust Valve (1/32" Os) (Incl. 151)
② 35	29826	1	Screw, 10-32 X 3/4"	② 126	34035	1	Intake Valve (Std.) (Incl. 151)
② 36	29918	1	Washer-Lock	② 126	34036	1	Intake Valve (1/32" Os) (Incl. 151)
② 37	29216	1	Nut-Lock, 10-32	② 127	650691	5	Washer
② 38	29642	1	Ring-Retaining	② 128	650690	3	Belleville Washer
② 40	35776A	1	Piston, Pin & Ring Set (Std.)	② 130	6021A	4	Screw, 5/16-18 X 1-7/16"
② 40	35777A	1	Piston, Pin & Ring Set (.010" Os)	② 130A	650727	2	Screw, 5/16-18 X 1-25/32"
② 40	35778A	1	Piston, Pin & Ring Set (.020)	② 130B	650713	2	Screw
② 41	35773A	1	Piston & Pin Asm (Std.) (Incl. 43)	② 130C	650694A	3	Screw, 5/16-18 X 2"
② 41	35774A	1	Piston & Pin Asm (.010" Os) (Incl. 43)	② 135	35395	1	Spark Plug (Rn4c)
② 41	35775A	1	Piston & Pin Asm (.020" Os) (Incl. 43)	② 139	33369	1	Bracket-Gear, Governor
② 42	35779	1	Ring Set (Std.)	② 140	650836	2	Screw, 10-24 X 1/2"
② 42	35780	1	Ring Set (.010" Os)	② 149	27882	1	Cap-Valve Spring
② 42	35781	1	Ring Set (.020)	② 149A	35862	1	Cap-Valve Spring
② 43	35772	2	Piston Pin Retaining Ring	② 150	27881	2	Spring-Valve
② 45	36898	1	Connecting Rod Asm (Incl. 47 & 49)	② 151	32581	2	Keeper-Spring, Valve
② 47	651033	2	Bolt-Rod, Connecting	② 169	27896A	2	Gasket-Cover, Valve
② 48	34034	2	Lifter-Valve	② 170	28423	1	Body-Breather
② 49	36896	1	Dipper-Oil	② 171	28424	1	Element-Breather
② 50	35375	1	Camshaft (Mcr)	② 172	28425	1	Cover-Valve
② 60	33273A	1	Extension-Blower Housing	② 173	35350	1	Tube-Breather
② 65	650128	1	Screw, 10-24 X 1/2"	② 174	650128	2	Screw, 10-24 X 1/2"
② 69	37342	1	Gasket-Cover, Cylinder	② 178	29752	2	Nut And Lockwasher ASM
② 70	35376A	1	Cylinder Cover (Incl. 71, 75 & 80)	② 182	30088A	2	Screw-Torx, T-30 (1/4-20 X 27/32")
② 71	35377	1	Bushing-Crankshaft	② 183	34587A	1	Bracket-Choke
② 72	27642	1	Plug-Oil Drain				
② 75	35319	1	Seal-Oil				
② 80	37587	1	Shaft-Governor				
② 81	651080	1	Washer				
② 82	37588	1	Governor Gear Asm (Incl. 81)				
② 83	30588A	1	Spool-Governor				
② 84	29193	1	Ring-Retaining				

# Engine Assembly

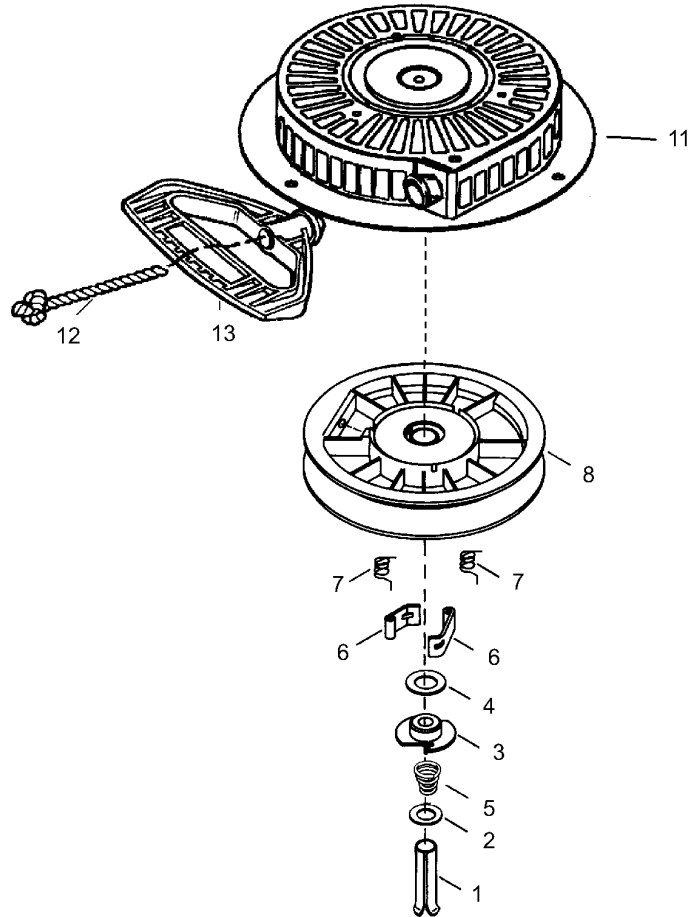
## Tecumseh Model No. Hmsk100-159495y (continued)



## Engine Assembly

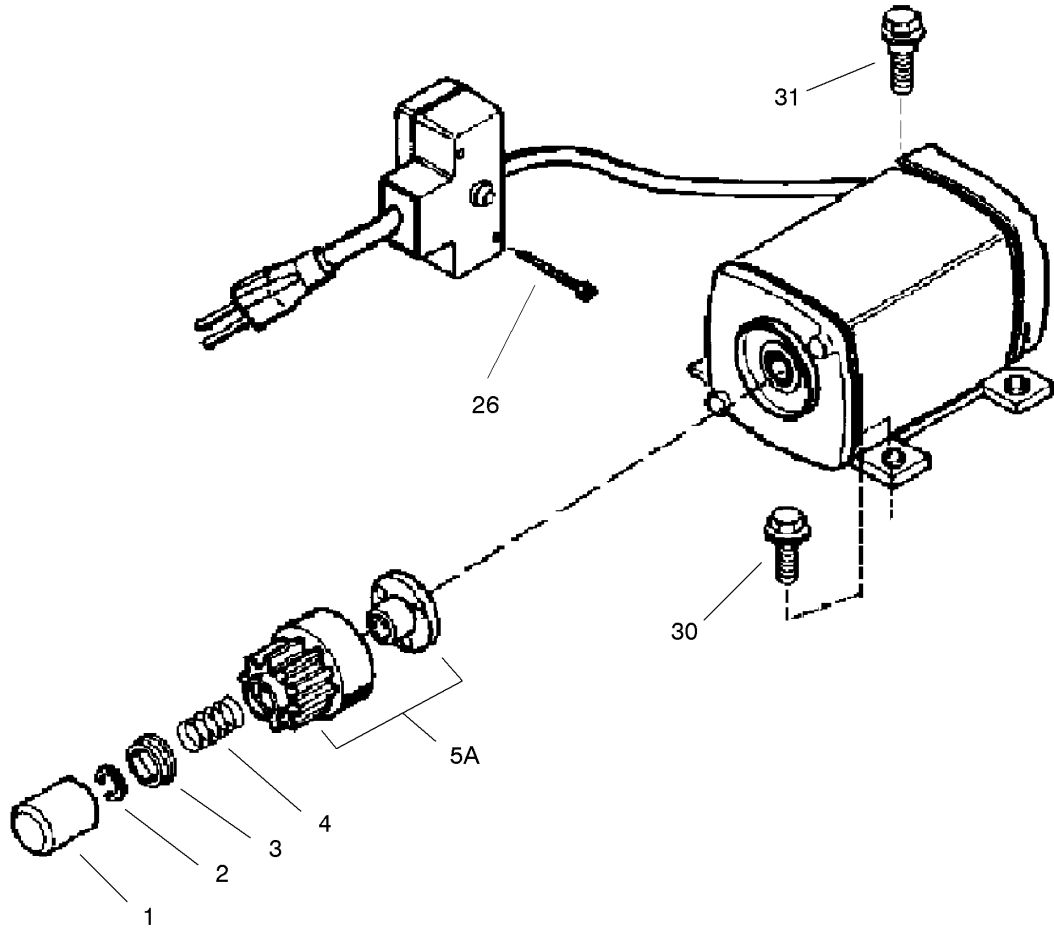
### Tecumseh Model No. Hmsk100-159495y (continued)

Ref	Part No.	Qty.	Description	Ref	Part No.	Qty.	Description
②184	33263	1	Gasket-Carburetor To Intake Pipe	②335	36547	1	Cover-Carburetor
②185	33877	1	Pipe-Intake	②336	650765	1	Screw, 10-32 X 1/2"
②186	34667	1	Link-Governor	②338	28942	2	Screw, 10-32 X 3/8"
②186B	36652	1	Spring-Choke	②340	34155	1	Bracket-Fuel Tank
②200	34677	1	Control Bracket (Incl. 19,203,204,206)	②341	34154	1	Bracket-Fuel Tank
②203	31342	1	Spring-Compression	②342	650561	1	Screw, 1/4-20 X 5/8"
②204	651029	1	Screw-Torx, 5-40 X 7/16"	②343	35079A	1	Key Switch Bracket (Incl. 343a)
②206	610973	1	Terminal	②343A	651060	1	Screw, 10-32 X 23/64"
②207	33878	1	Link-Throttle	②350	570682A	1	Primer ASM
②209	650821	2	Screw	②351	32180C	1	Line-Primer
②215	35440	1	Knob-Control	②355	590574	1	Handle-Grip, Mitten
②219	34586	1	Rod-Choke	②361	650990	2	Screw-Torx, T-30 (1/4-20 X 15/32")
②220	35438	1	Knob-Choke	②361A	650819	2	Screw
②222	28820	2	Screw, 10-32 X 1/2"	②364	37659	1	Bracket-Carburetor Cover
②223	650378	2	Screw-Torx, T-30 (5/16-18 X 1-1/8")	②365	650767	2	Screw, 8-32 X 27/64"
②224	27915A	1	Gasket-Intake Pipe	②370	36261	1	Decal-Instruction
②260	35447A	1	Housing-Blower	②370C	36501	1	Decal-Primer
②261	650788	2	Screw, 1/4-20 X 3/4"	②370D	36534	1	Decal-Caution
②262	651084	2	Screw-Torx, T-40 (5/16-24 X 21/32")	②370G	35077	1	Decal-Instruction
②264A	650802	1	Screw-Torx, T-30 (1/4-20 X 1/2")	②370K	36695	1	Decal-Starter
②265	33272D	1	Cover-Cylinder Head	②370R	37119	1	Decal-Warning
②275	35056	1	Muffler	②380	640054	1	Carburetor (Incl. 184)
②276	31588	1	Plate-Locking	②390	590749	1	Rewind Starter ASM
②277	651002	2	Screw, 5/16-18 X 4-3/16"	②		0	(Note: This Engine Could Ha Ve Been Built With 590733 Starter.)
②278	650147	2	Flat Washer	②395	37102	1	Electric Motor (220 Volt)
②279	650980	2	Screw, 10-16 X 47/64"	②400	36452A	1	Gasket Set (Incl. Items Marked Pk In Notes)
②279A	650979	2	Lockwasher	②420	730226A	1	Sae 5w30 4-Cycle Engine Oil (Quart)
②280	36294	1	Heat Shield (Incl. 278, 279 & 279a)				
②285	35985B	1	Cup-Starter				
②287	29752	4	Nut And Lockwasher ASM				
②290	29774	1	Line-Fuel				
②291	30705	1	Line-Fuel				
②292	26460	4	Clamp-Fuel Line				
②295	35857	1	Fuel Shut-Off Valve (Incl. 292)				
②298	650665	2	Screw, 1/4-15 X 3/4"				
②300	34156A	1	Fuel Tank (Incl. 292 & 301)				
②301	36246	1	Cap-Fuel				
②305	35554	1	Tube-Oil Fill				
②307	35499	1	O-Ring				
②308	35540	1	Clip-Fill Tube				
②310	36205	1	Gage Oil ASM				
②314	650873	1	Screw, 1/4-20 X 3/4"				
②315	611111	1	Alternator Coil (18 Watt) (Incl. 323)				
②323	611118	1	Terminal				
②325	29443	1	Clip-Wire				
②328	35062	2	Keys-Ignition				
②329	610973	1	Terminal				



### Recoil Starter Part No. 590749à

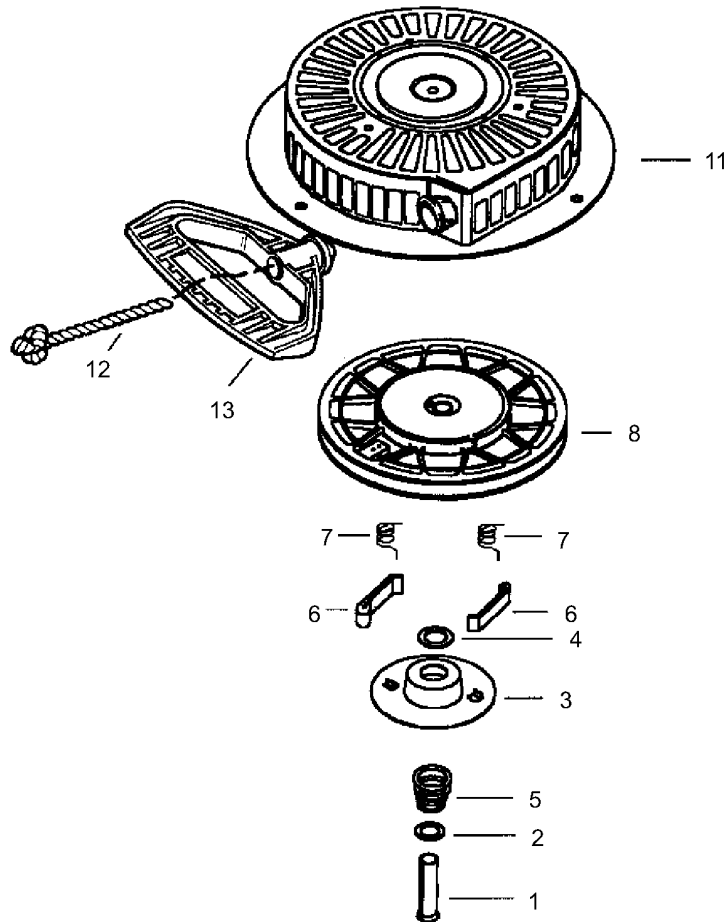
Ref	Part No.	Qty.	Description				
●1	590599A	1	Spring Pin (Incl. Ref.# 4)				
●2	590600	1	Washer				
●3	590679	1	Retainer				
●4	590601	1	Washer				
●5	590678	1	Spring-Brake				
●6	590680	2	Dog-Starters				
●7	590412	2	Spring-Dogs				
●8	590682	1	Pulley And Rewind Spring ASM				
●11	590750A	1	Starter Housing ASM				
●12	590535	1	Rope-Starter (Length 98" X 9/64" Dia)				
●13	590574	1	Handle-Grip, Mitten				



### Electric Starter (220 Volt) Part No. 37102

Ref	Part No.	Qty.	Description
①	33451	1	Cover-Dust
②	33842	1	Ring-Retainer
③	33430	1	Retainer-Spring
④	33431	1	Spring-Anti-Drift
⑤A	37050	1	Gear & Nut (Incl. 2)
②6	650819	2	Screw
②6	651032	2	Screw, 12-16 X 5/8"
③0	30063	2	Screw-Torx, T-30 (1/4-20 X 1/2")
③1	650820	2	Screw, 1/4-20 X 1/2"

--	--	--	--



## Rewind Starter Assembly No. 590733 (Optional) Tecumseh HMSK-80 155723

Ref	Part No.	Qty.	Description
1	590599A	1	Pin-Spring (Incl. Ref. # 4)
2	590600	1	Washer
3	590696	1	Retainer
4	590601	1	Washer
5	590697	1	Spring-Brake
6	590698	2	Dog-Starter
7	590699	2	Spring-Dog
8	590709	1	Pulley And Rewind Spring ASM
11	590734A	1	Starter Housing ASM
12	590535	1	Rope-Starter (Length 98" X 9/64" Dia)
13	590574	1	Handle-Grip, Mitten

--	--	--	--

## NOTES

## NOTES

## NOTES

