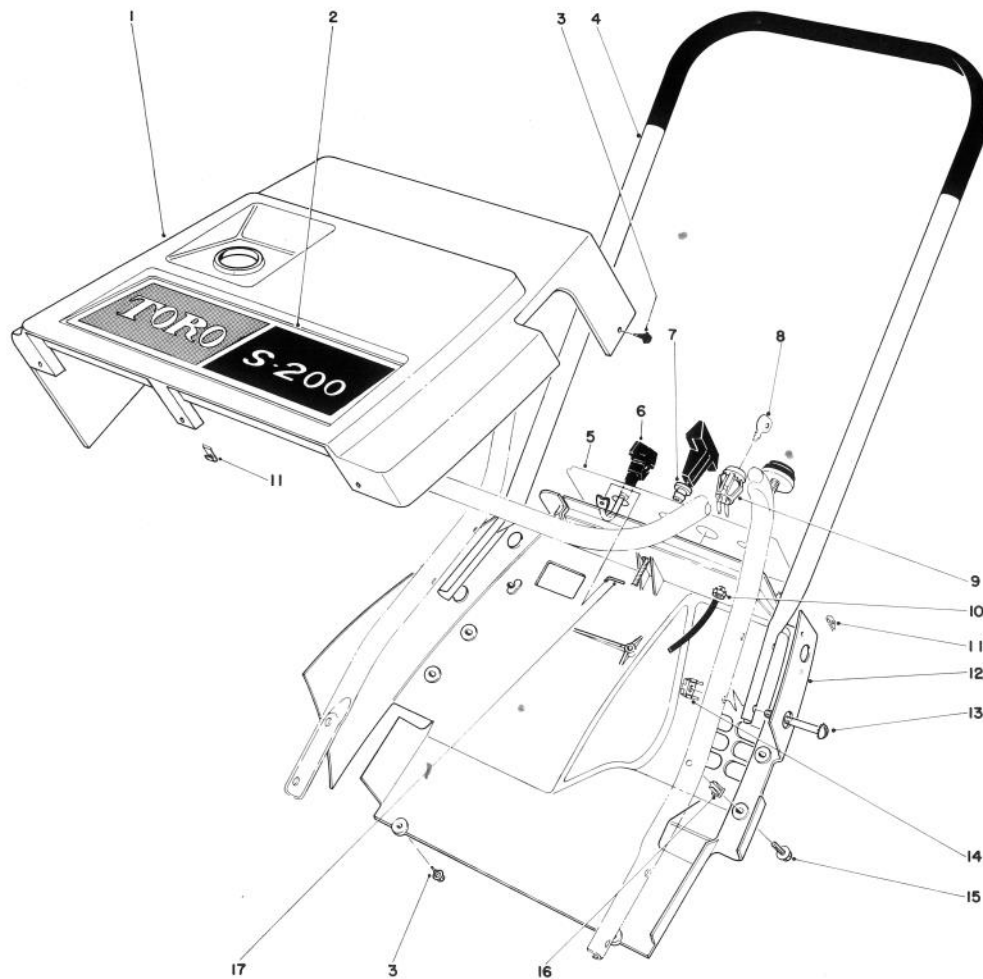




MODEL NO. 38120 – 4000001 & UP

PARTS CATALOG

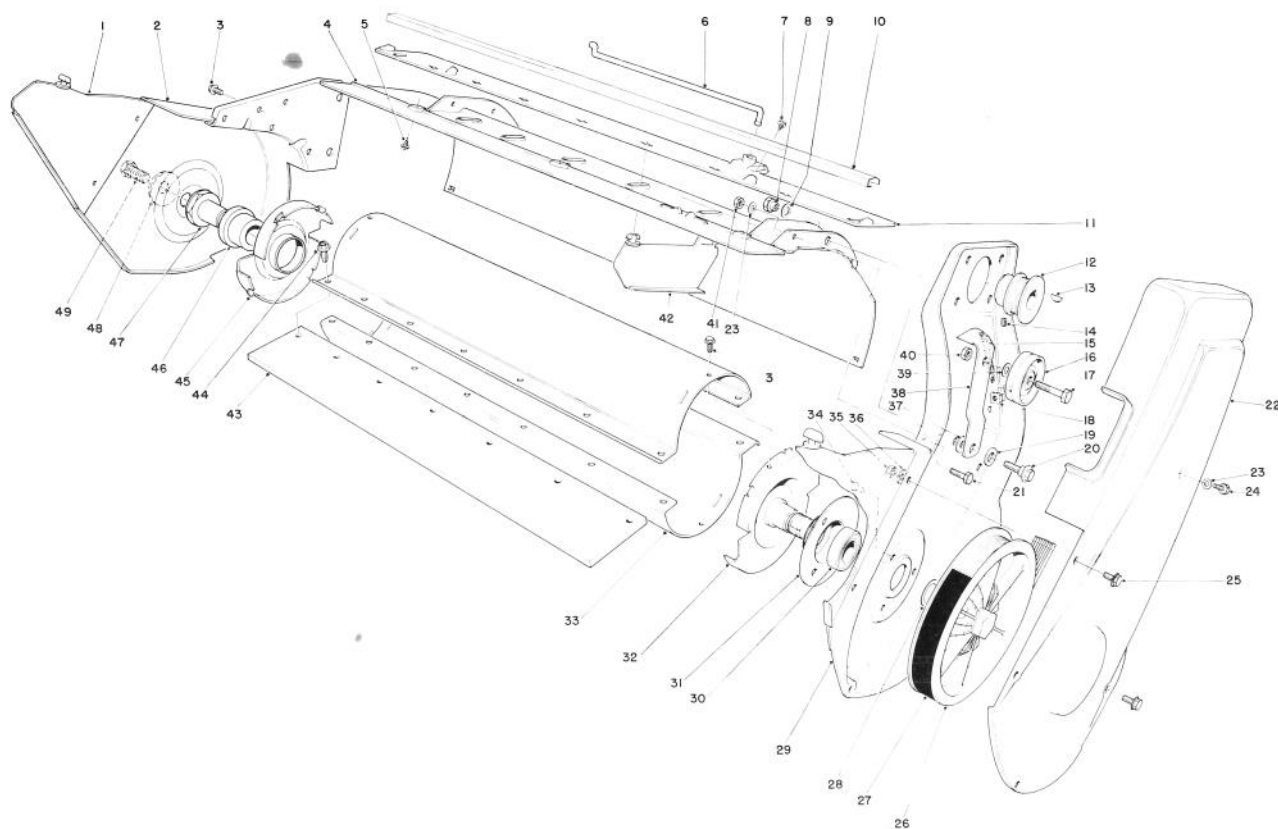
TORO S-200



SHROUD & HANDLE ASSEMBLY

Ref. No.	Part No.	Description	No. Used
1	39-0890	Upper Shroud	1
2	39-3290	Decal – Toro	1
3	32104-76	Self Tapping Screw	4
4	23-4260	Upper Handle	1
5	42-2180	Decal – Control Panel	1
6	39-0560	Control Assembly – Choke	1
7	23-7470	Guide – Starter Rope	1
8	33-2010	Key	2
9	40-5940	Switch	1

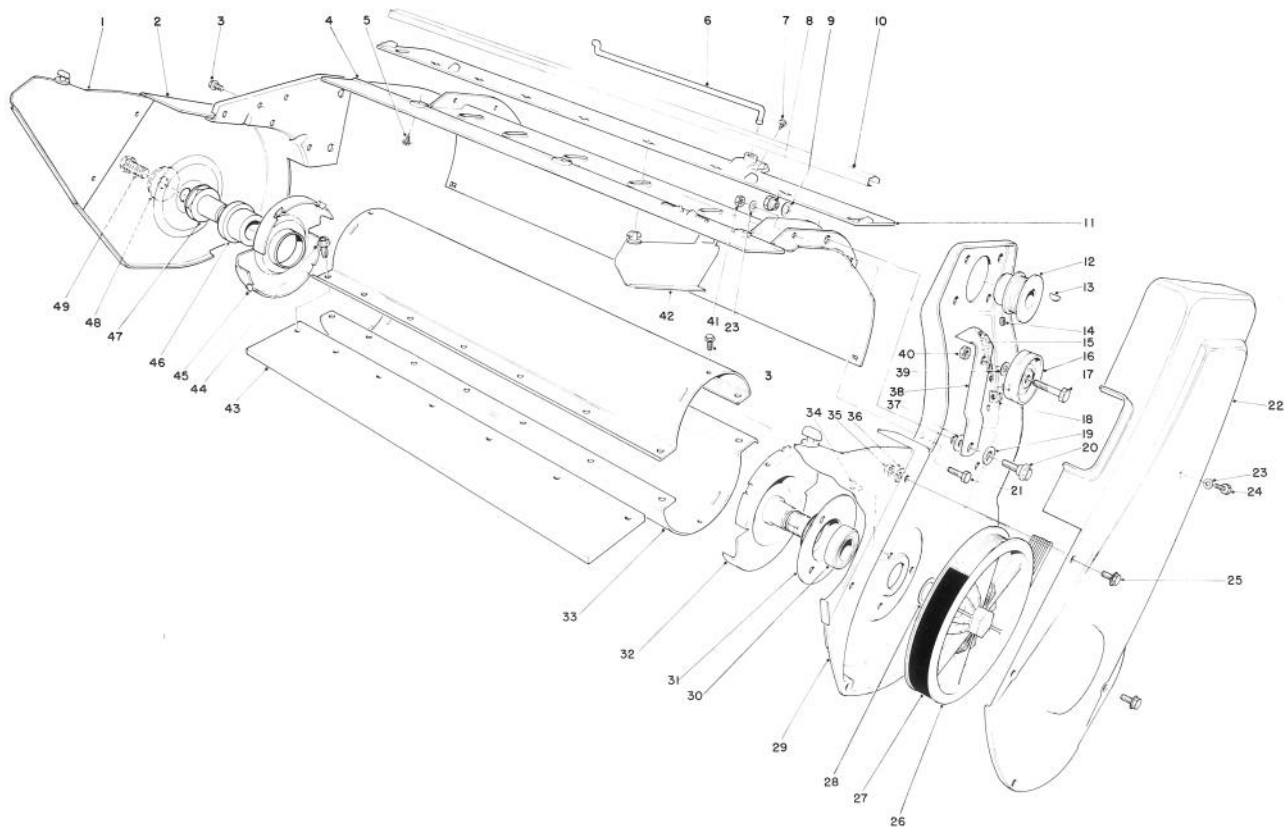
Ref. No.	Part No.	Description	No. Used
10	32149-2	Locknut	1
11	49-1490	Nut	5
12	40-6630	Lower Shroud	1
13	32140-100	Round Head Machine Screw	4
14	3290-225	Nut – Retained	4
15	32144-34	Self Tapping Screw	3
16	3290-428	Push Nut	3
17	39-8180	Control Wire	1



LOWER MAIN FRAME ASSEMBLY

Ref. No.	Part No.	Description	No. Used
1	41-8130	Vane — Outside	2
2	39-1060	Side Plate — Right	1
3	12-3270	Screw — Special	6
4	41-8510	Housing	1
5	32144-34	Self Tapping Screw	3
6	25-5630	Linkage — Vane Adjustment	1
7	32104-77	Self Tapping Screw	2
8	17-7010	Pivot Nut	1
9	41-8440	Washer	1
10	42-1680	Moulding — Warning	1
11	41-8480	Vane Mount	1
12	25-6400	Engine Pulley	1
13	3257-3	Woodruff Key	1
14	3245-32	Set Screw	2
15	26-9730	Idler Spring	1
16	25-5880	Idler Pulley	1
17	323-9	Capscrew	1
18	3290-225	Nut Retained	1
19	25-5640	Washer	1
20	27-0410	Shoulder Screw	1
21	321-3	Capscrew	5

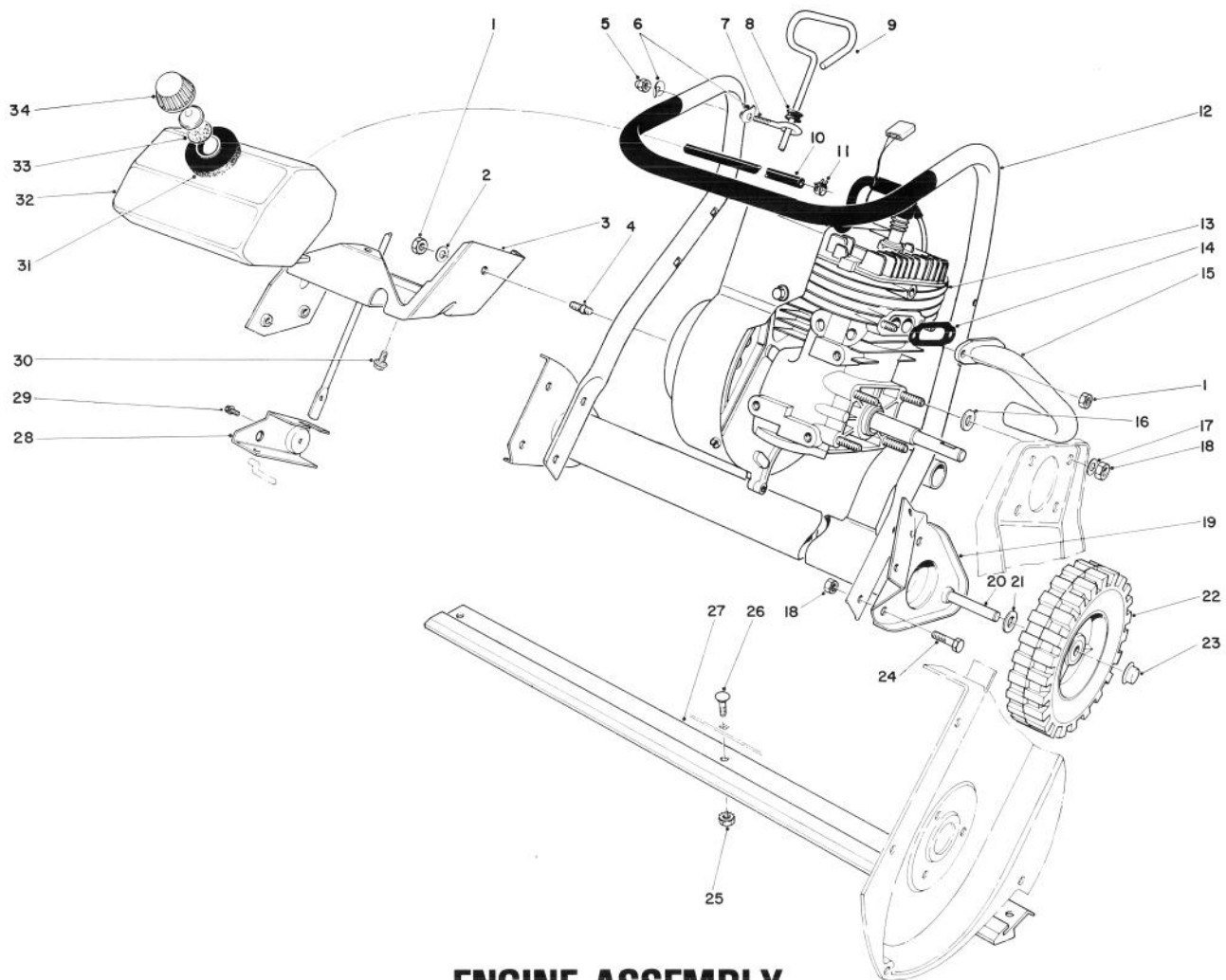
Ref. No.	Part No.	Description	No. Used
22	41-8180	Drive Cover	1
23	3256-22	Washer	6
24	3235-18	Capscrew	1
25	32105-2	Machine Screw	6
26	49-1530	Rotor Pulley	1
27	25-6430	Belt	1
28	26-0970	Washer	1
29	33-2130	Side Plate — Left	1
30	38-7820	Ball Bearing	1
31	38-8620	Bearing Flange	1
32	41-8150	Drive Shaft & End Cap	1
33	23-3190	Shell — Rotor	2
34	3292-8	Rivet	3
35	3296-2	Locknut	6
36	5-0774	Washer Control Pivot	4
37	5-4460	Washer	1
38	26-8990	Idler Arm	1
39	3256-24	Washer	1
40	3296-39	Locknut	1
41	32152-4	Locknut	5
42	39-1540	Vane	7



LOWER MAIN FRAME ASSEMBLY (Continued)

Ref. No.	Part No.	Description	No. Used
43	23-3730	Rotor Blade	2
44	37-0370	Screw	14
45	39-1070	End Cap Assembly — R.H. (Incl. Ref. #46)	1

Ref. No.	Part No.	Description	No. Used
46	39-0790	Bushing — Rotor	1
47	39-0830	Rotor Shaft	1
48	3290-340	Washer	1
49	323-41	Capscrew — Patch Lock	1

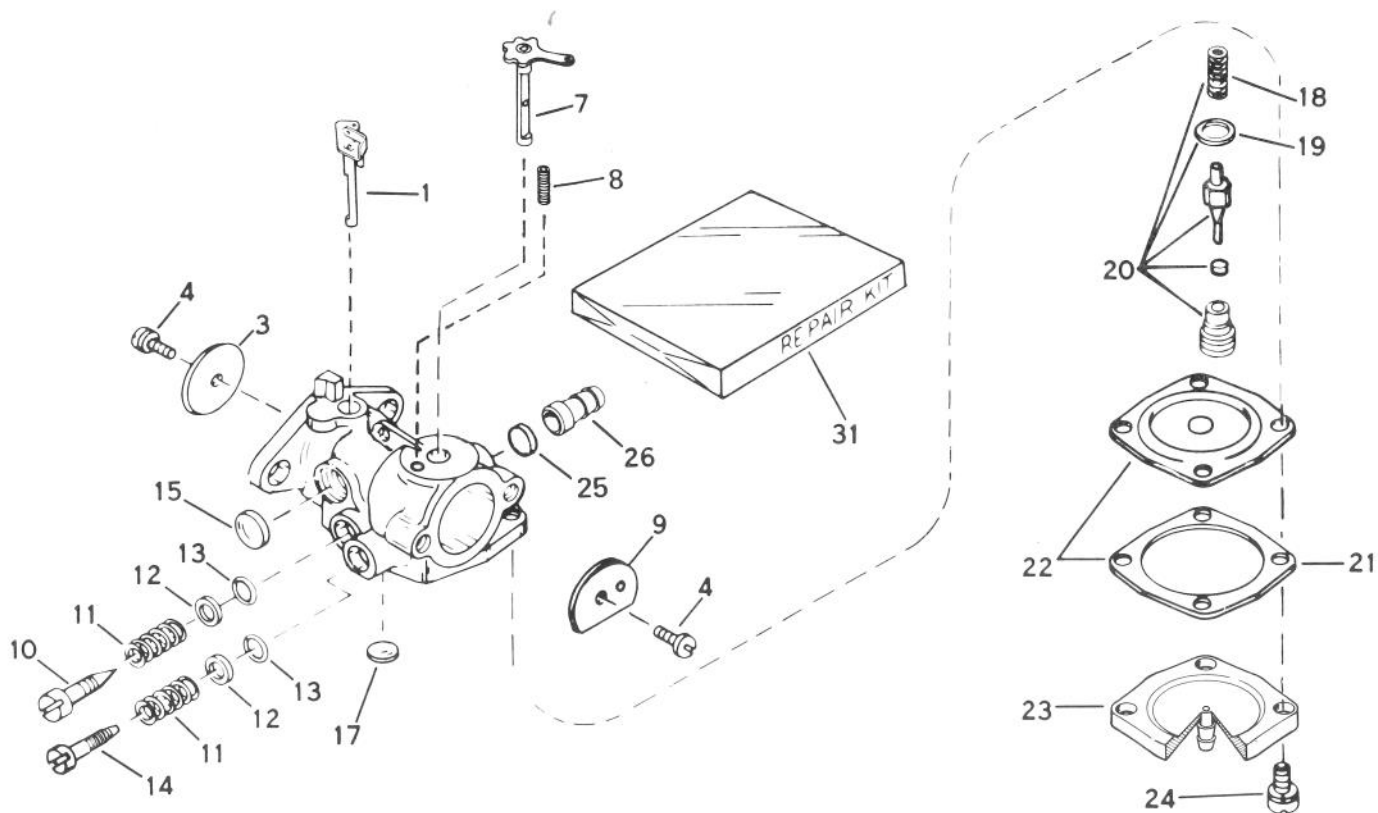


ENGINE ASSEMBLY

Ref. No.	Part No.	Description	No. Used
1	32152-4	Locknut	3
2	7-3315	Washer	1
3	39-8890	Rear Support — Engine	1
4	38-8710	Stud	1
5	32111-7	Cap Nut	1
6	3-7501	Washer	2
7	3-9278	Eye Bolt	1
8	237-73	Grommet	1
9	39-0850	Rod — Vane Adjustment	1
10	49-2480	Gas Line	1
11	2412-86	Clamp	2
12	33-2120	Lower Handle	1
13	221-675	Engine	1
*	221-670	Engine	1
14	23-3810	Gasket — Exhaust Pipe	1
15	41-8240	Exhaust Pipe	1
16	4-2390	Spacer	4
17	3256-23	Washer	4
18	3296-29	Locknut	10

Ref. No.	Part No.	Description	No. Used
19	26-6550	Muffler	1
20	27-0060	Axle	1
21	3256-24	Washer	2
22	23-3250	Wheel	2
23	3290-320	Retainer — Push On	2
24	322-3	Capscrew	6
25	32149-2	Locknut	3
26	3229-1	Carriage Bolt	3
27	23-3170	Scraper	1
28	39-0840	Bracket — Vane Adjustment	1
29	12-5450	Screw — Special	1
30	12-3270	Screw — Special	3
31	25-1610	Foam Pad	1
32	39-8670	Gas Tank	1
33	20-4620	Gasket	1
34	42-0680	Gas Cap (Incl. Ref. #33)	1
*	8-7279	Loose Parts	1
*	25-9150	Decal Replacement Serial Plate	1

*Not Illustrated



CARBURETOR NO. 632142

Engine Model No. AH520 Type 1602A

CARBURETOR NO. 632142A

Engine Model No. AH520 Type 1603B

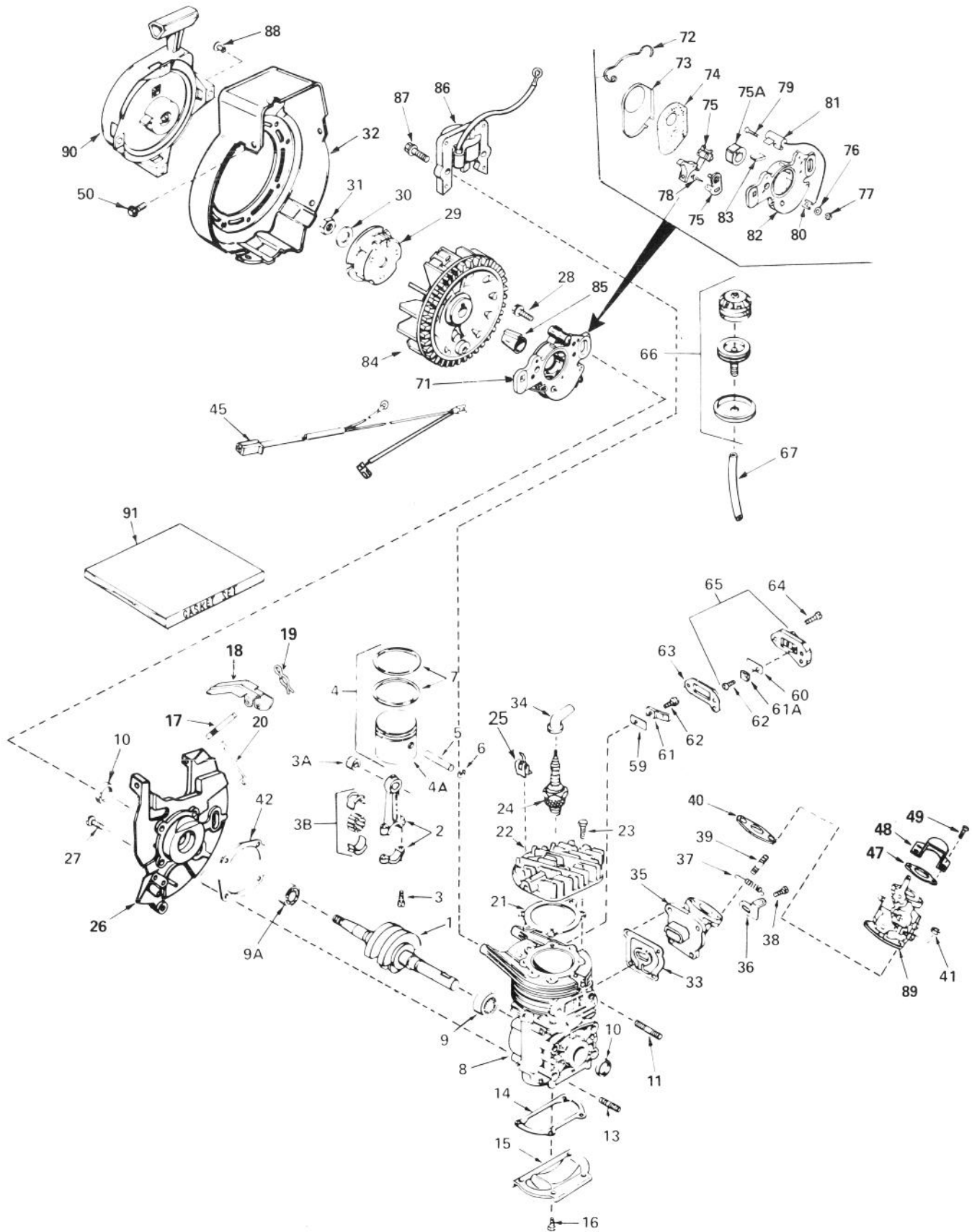
Ref. No.	Part No.	Description	No. Used
1	632130	Shaft & Lever Assy., Throttle	1
3	631036	Shutter, Throttle	1
4	650506	Screw, Throttle & Choke Shutter	2
7	631888	Shaft & Lever Assy., Choke	1
8	630735	Spring, Choke Positioning	1
9	31837	Shutter, Choke	1
10	631562	Screw, Idle Adjustment	1
11	630738	Spring, Adjustment Screw	2
12	630739	Washer, Adjustment Screw	2
13	†630740	"O" Ring, Adjustment Screw	2
14	630898	Screw, Main Adjustment	1
15	†630748	Plug, Welch	1
17	†630746	Plug, Welch (used on type 1603B)	1
*	†640746	Plug, Welch (used on type 1602A)	1
18	631049	Spring, Valve	1
19	630742	Gasket, Valve Seat	1

Ref. No.	Part No.	Description	No. Used
20	†630932A	Inlet Needle, Seat, Spring & Gasket Assy. (Incl. Ref. #18 & 19)	1
21	630750	Gasket, Diaphragm	1
22	†630978	Diaphragm Assembly (Incl. Ref. #21)	1
23	632127	Cover, Diaphragm (used on type 1603B)	1
*	631653	Cover Assy., Diaphragm (used on type 1602A)	1
24	650817	Screw, Diaphragm Cover	4
25	632163	Disk (used on type 1603B)	1
*	631201	Valve Check (used on type 1602A)	1
26	632164	Fitting, Fuel Inlet (used on type 1603B)	1
*	631803	Fitting, Fuel Inlet (used on type 1602A)	1
31	631893	Repair Kit (Incl. items marked †)	1

*Not Illustrated

ENGINE ASSEMBLY

Engine Tecumseh Model No. AH520 Type 1602A & 1603B



ENGINE ASSEMBLY

Engine Tecumseh Model No. AH520 Type 1602A & 1603B

Ref. No.	Part No.	Description	No. Used
1	290497	Crankshaft	1
2	310244	Rod Assy., Connecting (Incl. Ref. #3, 3A & 3B)	1
3	650633	Screw, Connecting Rod	2
3A	530104A	Bearing, Cartridge	1
3B	530149	Bearing & Liner Set, Needle	1
4	310259	Piston Assy. (Incl. Ref. #4A thru 7)	1
4A	310230B	Piston	1
5	310178	Pin, Piston	1
6	310167	Ring, Piston Pin Retaining	2
7	310190	Ring Set, Piston	1
8		Block Assy., Cylinder (Order short block if replacement is required)	1
9	530105	Bearing, Needle	1
9A	530110	Bearing, Ball	1
10	510319	Seal, Crankshaft	2
11	650801	Stud, Exhaust	2
13	650796	Stud	4
14	*510270	Gasket, Cover	1
15	570370A	Plate, Cover	1
16	650579	Screw, Pan Flex Hd.	4
17	490295	Shaft, Air Vane	1
18	490296	Vane Assy., Air	1
19	490278	Clip, Retainer	1
20	490294	Link, Governor	1
21	*510274	Gasket, Cylinder Head	1
22	250240A	Head, Cylinder	1
23	650477	Screw, Pan Flex Hd.	4
24	611005	Plug, Spark (RJ-18Y or equivalent)	1
25	611021	Clip (used on type 1602A, & 1603B)	1
26	350402	Base Assy., Blower Housing (Incl. Ref. #10 & 17) (used on type 1602A)	1
26	350398	Base Assy., Blower Housing (Incl. Ref. #10 & 17) (used on type 1603B)	1
27	650497	Screw, Pan Flex Hd.	4
28	650747	Screw, Hex Washer Hd.	2
29	590551	Cup, Starter	1
30	650763	Washer, Spring	1
31	650390	Nut, Flywheel	1
32	350397	Housing, Blower (used on type 1602A)	1
32	350399	Housing, Blower (used on type 1603B)	1
33	*510312	Gasket, Port	1
34	610118	Cover, Spark Plug	1
35	570627	Elbow Assy., Adapter (Incl. Ref. #39)	1
36	570626	Lever, Adjusting	1

Ref. No.	Part No.	Description	No. Used
37	490293	Spring, Adjusting Lever	1
38	650576	Screw, Pan Flex Hd.	4
39	650700	Stud, Carburetor	2
40	*510213	Gasket, Carburetor	1
41	650457	Nut, Hex	2
42	*510292	Gasket, Housing Base	1
45	611022	Harness, Wire	1
47	510206	Gasket	1
48	570434	Baffle, Air	1
49	650229	Screw, Rd. Hd.	2
50	650356	Screw, Hex Washer w/locking Thread	6
59	470136	Reed, Compression Release (used on type 1602A)	1
60	470135	Reed, Compression Release (used on type 1602A)	1
61	470151	Plate, Reed Hold Down (used on type 1602A)	1
61A	470137	Plate, Reed Hold Down (used on type 1602A)	1
62	650654	Screw, Pan Hd. (used on type 1602A)	2
63	*510263	Gasket, Compression Release (used on type 1602A)	1
64	650576	Screw, Pan Flex Hd. (used on type 1602A)	2
65	570437A	Cover Assy., Compression Release (Incl. Ref. #60, 61A & 62) (used on type no. 1602A)	1
66	570629A	Primer Assy. (Incl. Ref. #68, 69 & 70)	1
67	32180B	Line, Primer	1
71	611006	Stator Plate Assy. (Incl. Ref. #72 & 75 thru 83)	1
72	30551	Spring, Breaker Box Cover	1
73	610947	Cover, Dust	1
74	30883	Gasket, Dust Cover	1
75	30547A	Contact Assy., Breaker (used on type 1602A & 1603B)	1
75A	30552	Cam, Breaker	1
76	610385	Washer	1
77	610408	Nut	1
78	29181	Breaker Fastening Screw & Washer	1
79	610593	Condenser Fastening Screw	1
80	33356	Terminal, Ground	1
81	30548B	Condenser	1
82	611008	Plate, Stator	1
83	30549	Felt, Cam Wiper	1
84	611007	Flywheel (used on type 1602A)	1
84	611010	Flywheel (used on type 1603B)	1
85	611014	Sleeve, Flywheel	1

Engine Tecumseh Model No. AH520 Type 1602A & 1603B

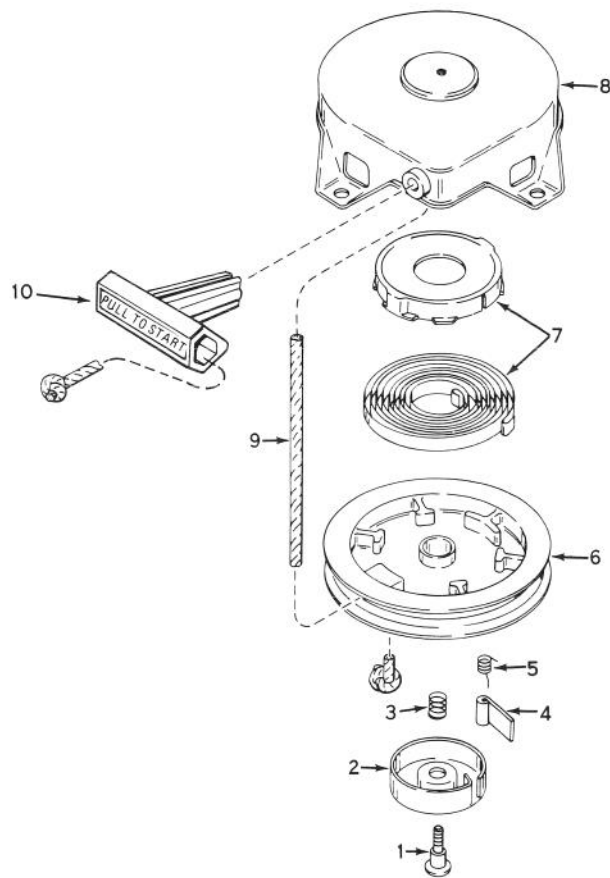


ENGINE ASSEMBLY (Continued)

Engine Tecumseh Model No. AH520 Type 1602A & 1603B

Ref. No.	Part No.	Description	No. Used
86	34431	Lamination & Coil Assy. (Incl. Ref. #34)	1
87	650814	Screw, Hex Hd.	2
88		Rivet, Pop (3/16" dia.) (Can be purchased locally)	4

Ref. No.	Part No.	Description	No. Used
89	632142	Carburetor (Incl. Ref. #40) (used on type 1602A)	1
89	632142A	Carburetor (Incl. Ref. #40) (used on type 1603B)	1
90	590537	Starter Assy., Rewind	1
91	510264D	Gasket Set (Incl. items marked*)	1



SHROUD & REWIND STARTER NO. 590537

Engine Tecumseh Model No. AH520 Type 1602A & 1603B

Ref. No.	Part No.	Description	No. Used
1	590409A	Screw, Retainer	1
2	590410	Retainer, R.H.	1
3	590411	Spring, Brake	1
4	590148	Dog, Starter	1
5	590412	Spring, R.H. Dog	1

Ref. No.	Part No.	Description	No. Used
6	590413A	Pulley	1
7	590414	Spring & Keeper Assy.	1
8	590536	Housing Assy., Starter	1
9	590535	Rope, Starter	1
10	590452	Handle Assy., Starter	1

IDENTIFICATION AND ORDERING

MODEL AND SERIAL NUMBERS

The S-200 has two identification numbers. A model number and a serial number. The two numbers are stamped on a decal which is located on right side of rotor housing, just ahead of the right wheel. In any correspondence concerning the S-200, supply model and serial numbers to assure that correct information and replacement parts are obtained.

To order replacement parts from an Authorized TORO Service Dealer, supply the following information:

1. Model and serial numbers of the S-200.
2. Part number, description, and quantity of part(s) desired.

Note: Do not order by reference number if a parts catalog is being used; use the PART NUMBER.

The Toro Promise

A ONE YEAR LIMITED WARRANTY

The Toro Company promises to repair your TORO Product if defective in materials or workmanship. The following time periods from the date of purchase apply:

Residential Product 1 Year
Residential Products Used Commercially . . . 45 Days

The costs of parts and labor are included, but the customer pays the transportation costs. Just return any residential product to an Authorized TORO Service Dealer or TORO Distributor.

Should you feel your TORO Product is defective and wish to rely on The Toro Promise, the following procedure is recommended:

1. Contact any Authorized TORO Service Dealer, TORO Master Service Dealer, or TORO Distributor (the Yellow Pages of your telephone directory is a good reference source).
2. He will either instruct you to return the product to him or recommend another Authorized TORO Service outlet which might be more convenient.
3. Bring the product along with your original sales slip, or other evidence of purchase date, to the service dealer.
4. The servicing dealer will inspect the unit, advise you whether the product is defective and, if so, make all repairs necessary to correct the defect without extra charge to you.

If for any reason you are dissatisfied with the dealer's analysis of the defect or the service performed, you may contact us.

Write:

TORO Consumer Service Department
8111 Lyndale Avenue South
Minneapolis, Minnesota 55420

The above remedy of product defects through repair by an Authorized TORO Service Dealer is the purchaser's sole remedy for any defect.

THERE IS NO OTHER EXPRESS WARRANTY. ALL IMPLIED WARRANTIES OF MERCHANTABILITY AND

FITNESS FOR USE ARE LIMITED TO THE DURATION OF THE EXPRESS WARRANTY.

Some states do not allow limitations on how long an implied warranty lasts, so the above limitation may not apply to you.

This warranty applies only to parts or components which are defective and does not cover repairs necessary due to normal wear, misuse, accidents, or lack of proper maintenance. Regular, routine maintenance of the unit to keep it in proper operating condition is the responsibility of the owner.

All warranty repairs reimbursable under The Toro Promise must be performed by an Authorized TORO Service Dealer using Toro approved replacement parts.

Repairs or attempted repairs by anyone other than an Authorized TORO Service Account are not reimbursable under The Toro Promise. In addition, these unauthorized repair attempts may result in additional malfunctions, the correction of which is not covered by warranty.

THE TORO COMPANY IS NOT LIABLE FOR INDIRECT, INCIDENTAL OR CONSEQUENTIAL DAMAGES IN CONNECTION WITH THE USE OF THE PRODUCT INCLUDING ANY COST OR EXPENSE OF PROVIDING SUBSTITUTE EQUIPMENT OR SERVICE DURING PERIODS OF MALFUNCTION OR NON-USE.

Some states do not allow the exclusion or limitation of incidental or consequential damages, so the above limitation or exclusion may not apply to you.

This warranty gives you specific legal rights, and you may also have other rights which vary from state to state.

COUNTRIES OTHER THAN THE UNITED STATES OR CANADA

Customers who have purchased TORO products exported from the United States or Canada should contact their TORO Distributor (Dealer) to obtain guarantee policies for your country, province or state. If for any reason

you are dissatisfied with your Distributor's service or have difficulty obtaining guarantee information, contact the TORO importer. If all other remedies fail, you may contact us at The Toro Company.

MAINTENANCE RECORD

[illegible]