



27in Rotary Cutting Unit

Groundsmaster[®] 3500-D, 4500-D and 4700-D

Model No. 30827—230003001 and Up

Parts Catalog

Ordering Replacement Parts

To order replacement parts, please supply: the part number, the quantity, and the description of each part desired.

Understanding Reference Numbers

Each identified part in an illustration has a reference number. The reference number for a part also appears in the parts list, along with other information about the part.

This catalog uses two special reference number formats, one to indicate parts in a service assembly and another to indicate the quantity of a given part in an illustration.

Service Assembly Reference Numbers

Parts in service assemblies have reference numbers in the form **a:b**. The **a** represents the reference number of the entire service assembly and the **b** represents a sequential number unique to each part within the service assembly.

For example, a wheel assembly might be identified by reference number **6**, the tire by **6:1**, the valve by **6:2**, and the wheel by **6:3**. When you order the assembly identified by reference number **6**, you receive all parts identified by reference numbers **6:1**, **6:2**, and **6:3**. However, you may also order any part individually.

Reference numbers of this type appear in illustrations and in part lists.

Reference Numbers Indicating Quantity

In an illustration, if a reference number indicates more than one part, the reference number has the form **nX y**. The **n** represents the quantity of the part, the **X** is the multiplication symbol, and the **y** represents the reference number.

For example, in an illustration, the reference number **2X 37** means that two of the parts identified by reference number **37** are indicated.

Contents

| Description | Page | Description | Page |
|--------------------------------------|------|-------------------------------------|------|
| Roller Assembly | 3 | Housing and Blade Assembly | 6 |
| Roller Assembly No. 105-6772 | 4 | Spindle Assembly No. 100-5700 | 7 |
| Height-Of-Cut Bracket Assembly | 5 | | |

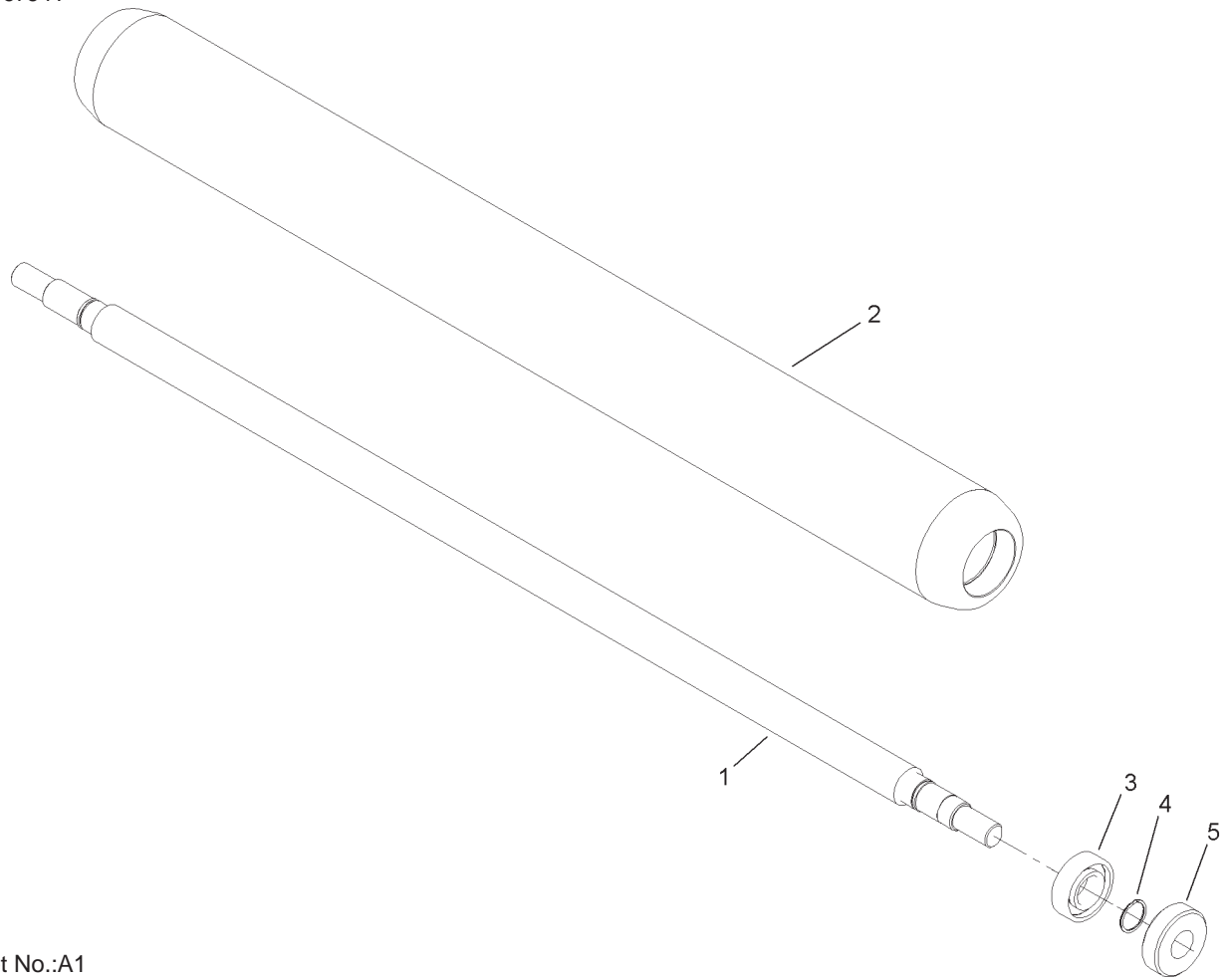
Accessories

| Description | Model / Part No. | Description | Model / Part No. |
|----------------------|------------------|-------------------|------------------|
| Mulching Kit | 30828 | Scraper Kit | 30829 |
| Highlift Blade | 105-4089 | | |

Part Description Abbreviations

Part descriptions in this catalog may include the following abbreviations.

| Abbreviation | Meaning | Abbreviation | Meaning |
|--------------|-----------------------------------|--------------|-------------------------|
| AR | as required | HYD | hydraulic |
| ASM | assembly | INC | incorporated |
| CARR | carriage | LH | left hand |
| DEG | degrees | NI | nylon insert |
| FH | flat head | PPH | Phillips pan head |
| GA | gauge | PTH | Phillips truss head |
| HF | hex flange | PTO | power take off |
| HH | hex head | RH | right hand |
| HHF | hex head flange | SFH | slotted fillister head |
| HLH | hex lag head | SHH | slotted hex head |
| HJ | hex jam | SQH | square head |
| HOC | height-of-cut | SHWH | slotted hex washer head |
| HS | hex socket | SPH | slotted pan head |
| HSBH | hex socket button head | SRH | slotted round head |
| HSFH | hex socket flat head | STD | standard |
| HSH | hex socket head | TAP | self tapping |
| HWH | hex washer head | TTH | Torx truss head |
| HWHTF | hex washer head thread forming | WH | wing head |



Sheet No.:A1

Roller Assembly No. 105-6772

| Ref. No. | Part No. | Qty. | Description |
|----------|-------------|------|-----------------|
| 1 | 104-9480 | 1 | Shaft-Roller |
| 2 | 105-9884-03 | 1 | Roller Tube ASM |
| 3 | 251-347 | 2 | Bearing-Ball |
| 4 | 32120-15 | 2 | Ring-Snap, Ext |
| 5 | 99-3842 | 2 | Seal-Oil |

| Ref. No. | Part No. | Qty. | Description |
|----------|----------|------|-------------|
| | | | |
| | | | |
| | | | |
| | | | |

