



## 38" and 42" Twin Bagger TimeCutter® Z Attachment

Model No. 79214—230000001 and Up

Model No. 79215—230000001 and Up

Form No. 3329—822

### Addendum

**Important** The following instructions are updates for the Setup instructions in the Twin Bagger Manual.

## Installing the Front Weight



### Caution



The bagger adds a lot of weight to the rear of the machine and may cause an unstable condition which could result in a loss of control.

- Install the front weight.

Installing the front weight procedure can be done at anytime during the setup.

1. Lift up the footrest and temporarily remove it from the machine (Fig. 1).

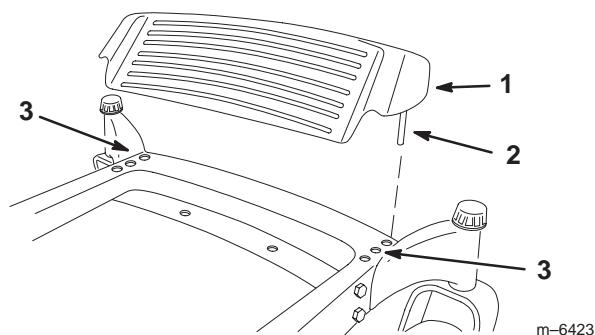


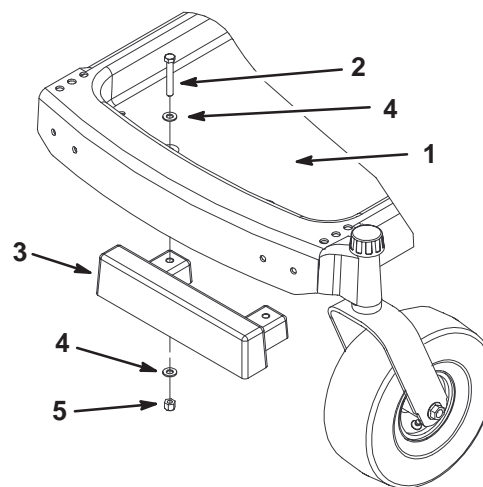
Figure 1

1. Footrest
2. Rod
3. Hole positions

2. Install the front weight to the bottom footrest frame with 2 bolts (3/8 x 2-1/4 inch), 4 washers (3/8 inch) and 2 nuts (3/8 inch) (Figure 2).

**Note:** Make sure the weight is installed as shown in Figure 2.

3. Install the footrest into the footrest frame while placing the rods in the same hole positions (Fig. 1).



m-6686

Figure 2

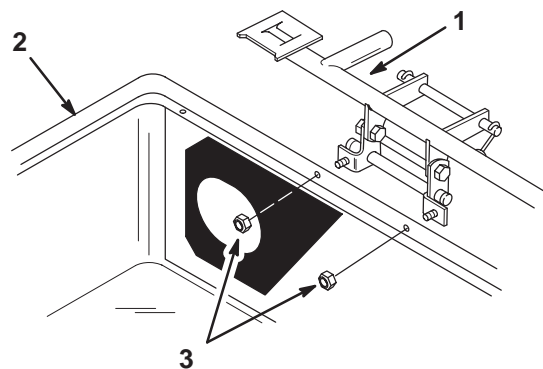
1. Footrest frame
2. Bolt, 3/8 x 2-1/4 inch
3. Front weight
4. Washer, 3/8 inch
5. Nut, 3/8 inch

**Important** When you remove the twin bagger, remember to remove the front weight.

## Assembling the Bagger

**Note:** If the frame assembly is not installed to the bagger cover, use the following instructions for installing it.

1. Install the frame assembly to the bagger cover with 2 locknuts (1/4 in.) (Fig. 3).



1849

Figure 3

1. Frame assembly
2. Bagger cover
3. Locknut, 1/4 in.