



Three-Wheel Drive Kit

Reelmaster® 2000

Model No. 03429

Form No. 3329-851

Installation Instructions

1. Park the traction unit on a level surface, set the parking brake and stop the engine. Remove the key from the ignition.



Caution



If you leave the key in the ignition switch, someone could accidentally start the engine and seriously injure you or other bystanders.

Remove key from ignition switch before you do any maintenance.

2. Lift the rear of the traction unit and remove the lug nuts securing the tire assembly to the wheel hub (Fig. 1). Retain the lug nuts.

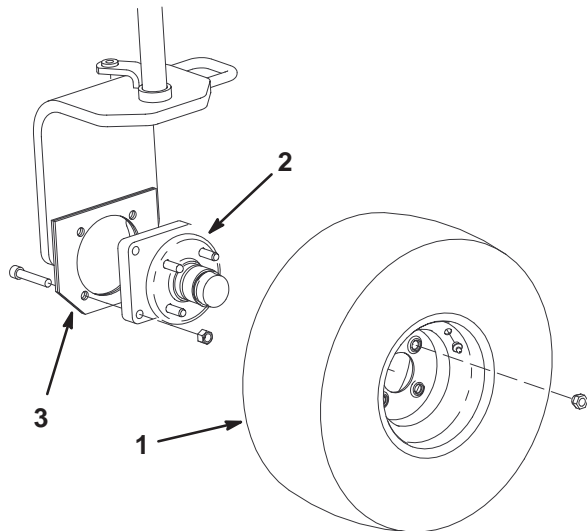


Figure 1

1. Tire assembly
2. Wheel hub
3. Castor fork

3. Remove the bolts and nuts securing the wheel hub assembly to the castor fork (Fig. 1). Discard the wheel hub assembly but retain the bolts and the nuts.

4. Mount (2) straight hydraulic fittings to the side of the new wheel motor (Fig. 2).
5. Mount the 45° fitting ends of the hydraulic hose assemblies to the straight fittings on the motor (Fig. 2).

Note: Make sure all the O-rings are lubricated and in position before installing the fittings.

6. Mount the motor assembly to the castor fork with the (4) bolts and nuts previously removed. Position the motor assembly as shown in figure 2.
7. Mount the tire assembly to the motor and hub assembly with the (4) lug nuts previously removed. Torque the lug nuts to 70 to 90 ft.-lb (95 to 122 N·m).

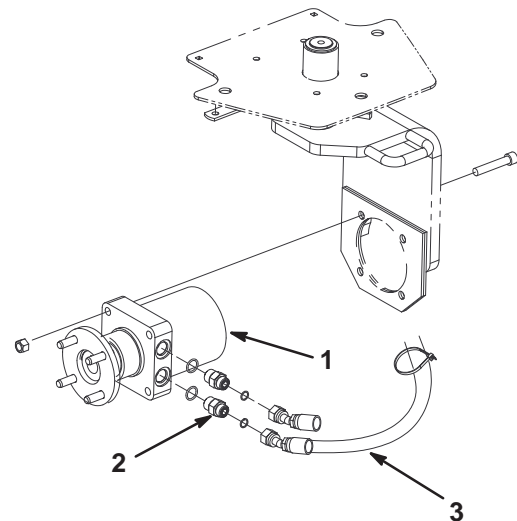


Figure 2

1. Wheel motor assembly
2. Straight fitting
3. Hydraulic hose assembly

8. Lower the rear of the traction unit to the ground.
9. Disconnect the negative cable and then positive cable from the battery.
10. Remove the seat, if installed.

11. Remove the (4) carriage bolts and nuts securing the skirt assembly to the frame (Fig. 3). Also, remove the capscrew securing the skirt to the fuel filter bracket.

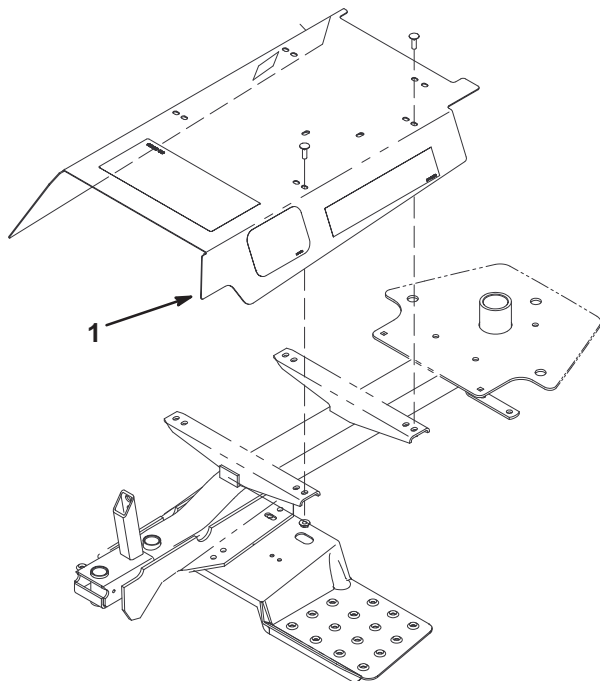


Figure 3

1. Skirt assembly

12. Install a 90° hydraulic fitting into the “A” port of the selector valve. Position the fitting as shown in figure 4.

Note: Make sure all the O-rings are lubricated and in position before installing fittings.

13. Install (3) 45° hydraulic fittings into the remaining ports in the selector valve. Position the fittings as shown in figure 4.

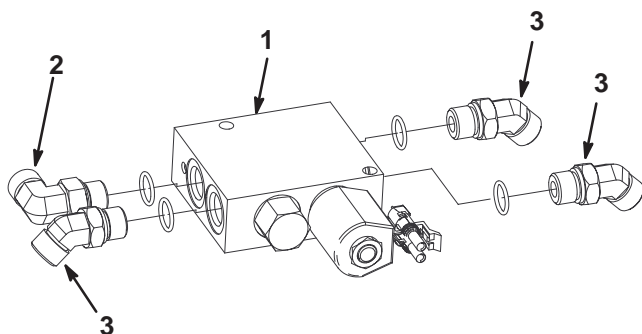


Figure 4

1. Selector valve
2. 90° Fitting
3. 45° Fitting

14. Route the wheel motor hydraulic hose assemblies along the left side of the frame and secure them to the fittings on the rear of the selector valve (Fig. 5) as follows:

- The top hose from the wheel motor to the outside fitting on the selector valve.
- The bottom hose from the wheel motor to the inside fitting on the selector valve.

Note: The hoses must not contact the tire or the rim.

15. Loosely mount the hoses to the tab on the left side of the frame with the clamp assembly (Fig. 5).

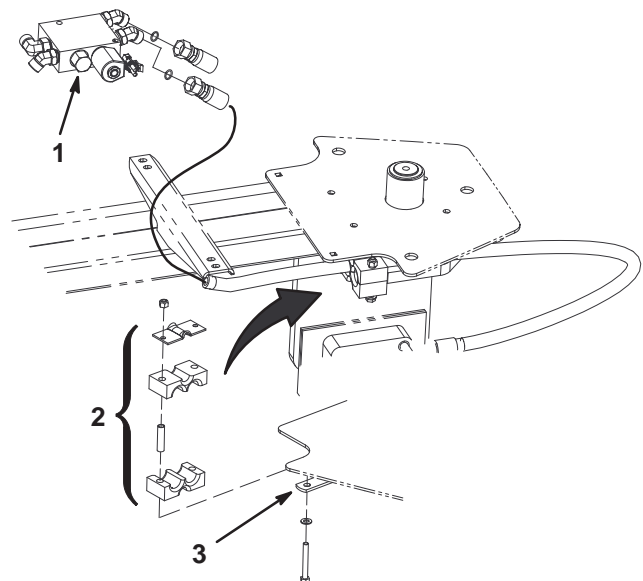


Figure 5

1. Selector valve
2. Clamp assembly
3. Frame tab

16. Remove the hydraulic fluid reservoir cap and insert the reservoir plug (Fig. 6) to block the outlet. This will retain most of the fluid in the reservoir when the caps are removed from hydraulic tubes.

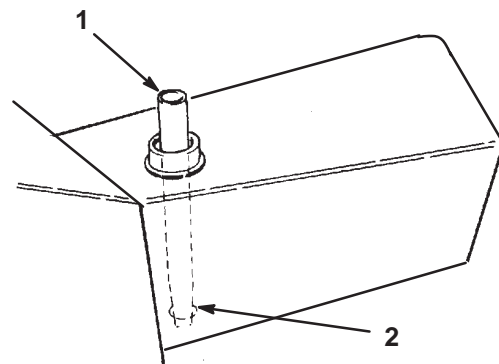


Figure 6

1. Reservoir plug
2. Reservoir outlet

17. Clean the area around the caps on hydraulic tubes (Fig. 7).

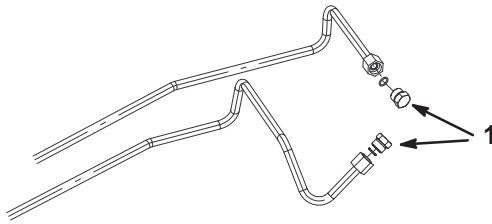


Figure 7

1. Caps

18. Place a drain pan under hydraulic tubes and remove the caps.

Note: Make sure all the O-rings are lubricated and in position before installing lines.

19. Connect the hydraulic tubes to the fittings on the front of the selector valve (Fig. 8).

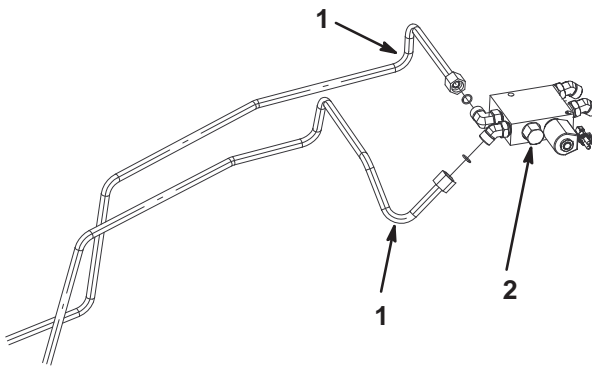


Figure 8

1. Hydraulic tube 2. Selector valve

20. Mount the selector valve assembly to the underside of the skirt with (4) 5/16" x 2-1/2" lg. bolts, flat washers and lock nuts (Fig. 9).

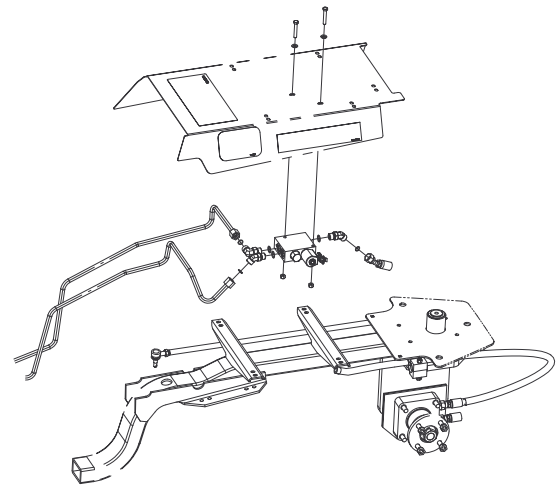


Figure 9

21. Mount the skirt to the traction unit frame with the (4) carriage bolts and nuts previously removed. Also, secure the skirt to the fuel filter bracket with the capscrew previously removed.

22. Connect the jumper wire from the traction unit wire harness to the connector on the selector valve.

23. Turn the steering fork fully from side to side to check for proper hose flex and position.

Note: The hoses should not rub on the tire, rim or castor fork.

24. Secure the hoses together with a cable tie.

Note: The hydraulic lines must not contact any sharp edges, moving parts, or engine exhaust parts.

25. Tighten all fittings and clamps.

26. Remove the hydraulic reservoir plug from the hydraulic tank.

27. Fill and check the hydraulic oil reservoir level. Install the reservoir cap.

28. Connect the positive then the negative battery cables to the battery.

Note: Connect the negative cable last.

29. Start the engine and cycle the traction and the lift cylinders to purge any air.

30. Re-check the hydraulic oil level.

