



Z147 Z Master[®]

With 44in SFS Side Discharge Mower

Model No. 74161 - 240000001 and up.

Parts Catalog

Ordering Replacement Parts

To order replacement parts, please supply: the part number, the quantity, and the description of each part desired.

Understanding Reference Numbers

Each identified part in an illustration has a reference number. The reference number for a part also appears in the parts list, along with other information about the part.

This catalog uses two special reference number formats, one to indicate parts in a service assembly and another to indicate the quantity of a given part in an illustration.

Service Assembly Reference Numbers

Parts in service assemblies have reference numbers in the form **a:b**. The **a** represents the reference number of the entire service assembly and the **b** represents a sequential number unique to each part within the service assembly.

For example, a wheel assembly might be identified by reference number 6, the tire by **6:1**, the valve by **6:2**, and the wheel by **6:3**. When you order the assembly identified by reference number 6, you receive all parts identified by reference numbers 6:1, 6:2, and 6:3. However, you may also order any part individually. Reference numbers of this type appear in illustrations and in part lists.

Reference Numbers Indicating Quantity

In an illustration, if a reference number indicates more than one part, the reference number has the form **nX y**. The **n** represents the quantity of the part, the **X** is the multiplication symbol, and the **y** represents the reference number.

For example, in an illustration, the reference number **2X 37** means that two of the parts identified by reference number 37 are indicated.

Part Description Abbreviations

Part descriptions in this catalog may include the following abbreviations.

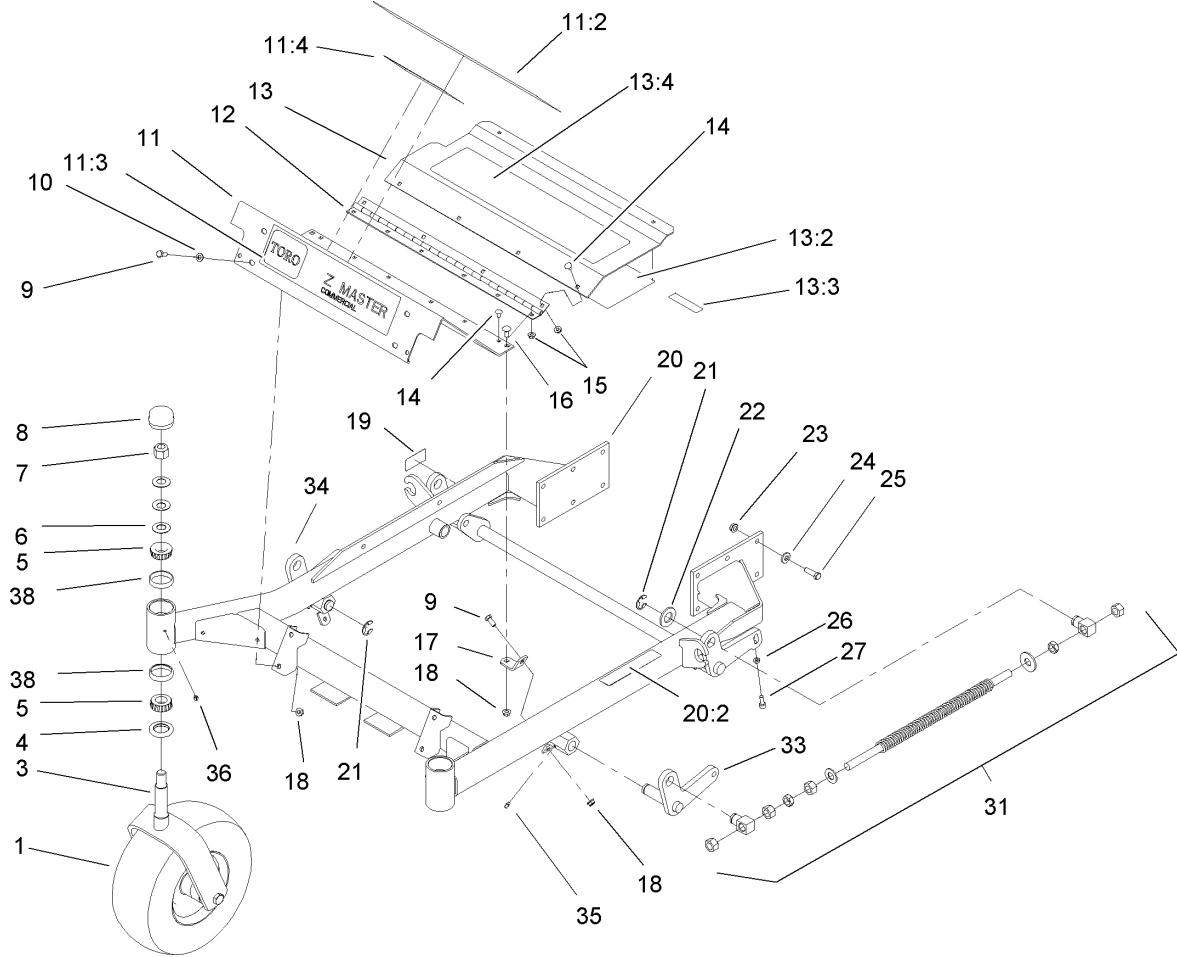
AR.	as required	HYD.	hydraulic
ASM.	assembly	INC.	incorporated
CARR.	carriage	LH.	left hand
DEG.	degrees	NI.	nylon insert
FH.	flat head	PPH.	phillips pan head
GA.	gauge	PTH.	phillips truss head
HF.	hex flange	PTO.	power take off
HH.	hex head	RH.	right hand
HHF.	hex head flange	SFH.	slotted fillister head
HHFTF.	hex head flange thread forming	SHH.	slotted hex head
HJ.	hex jam	SHWH.	slotted hex washer head
HLH.	hex lag head	SPH.	slotted pan head
HOC.	height-of-cut	SQH.	square head
HS.	hex	SRH.	slotted round head
HSBH.	hex socket button head	STD.	standard
HSFH.	hex socket flat head	TAP.	self tapping
HSH.	hex socket head	TTH.	torx truss head
HWH.	hex washer head	WH.	wing head
HWHTF.	hex washer head thread forming		

Footnotes

- ❶ Not illustrated
- ❷ Obtain Parts From Kawasaki
- ❸ Not serviced separately

Contents

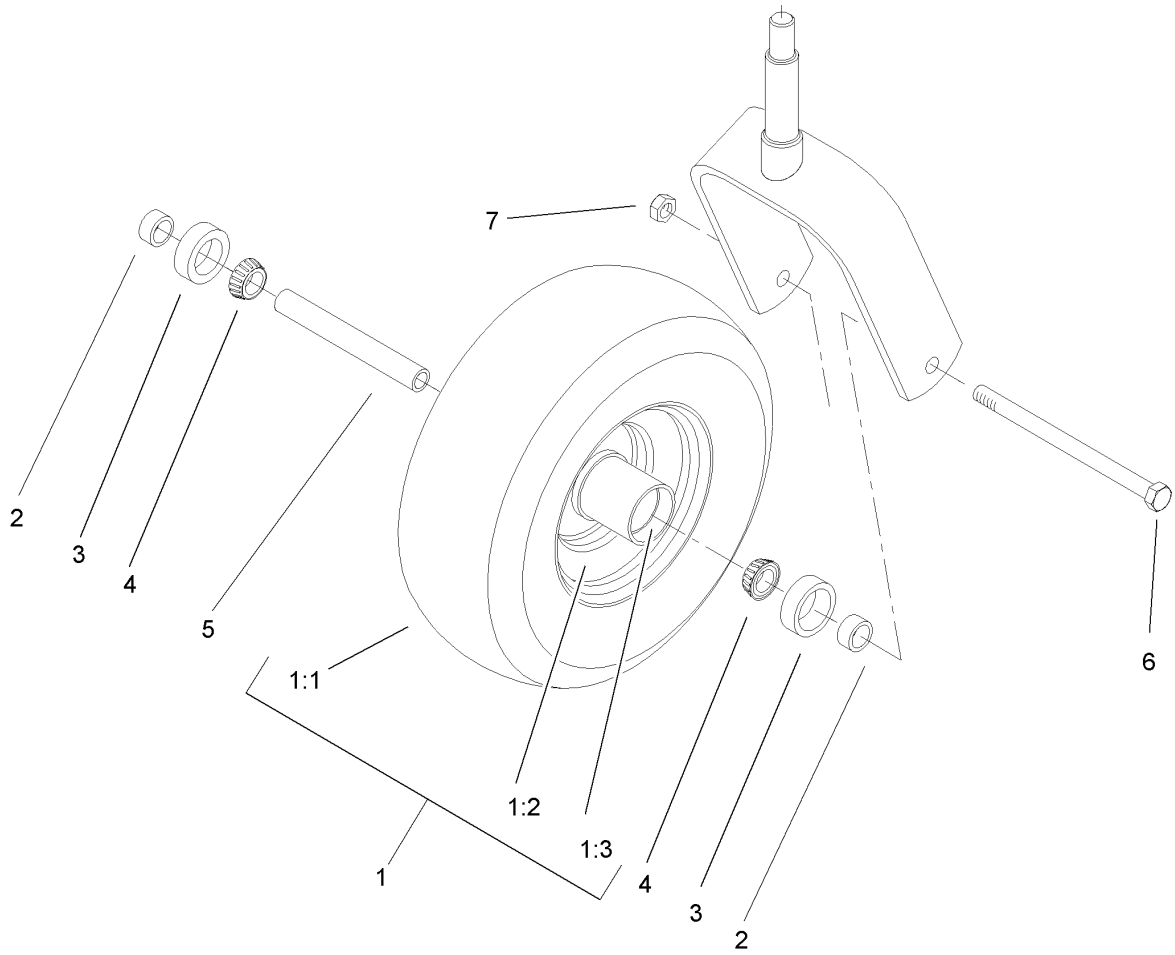
Description	Page	Description	Page
Front Frame Assembly	3	Air Filter/Muffler Assembly Kawasaki FH500V-ES10	25
Caster Wheel Assembly No. 1-634662	4	Fuel Tank/Fuel Valve Assembly Kawasaki FH500V-ES10	26
Front Spring Assembly No. 103-1987	5	Lubrication Equipment Assembly Kawasaki FH500V-ES10	27
Height of Cut Assembly	6	Piston/Crankshaft Assembly Kawasaki FH500V-ES10	28
Main Frame Assembly	7	Label Assembly Kawasaki FH500V-ES10	29
Fuel System Assembly	8	Carburetor Assembly Kawasaki FH500V-ES10	30
Parking Brake System Assembly	9	Control Equipment Assembly Kawasaki FH500V-ES10	31
Steering Control Assembly	10	Cooling Equipment Assembly Kawasaki FH500V-ES10	32
Hydraulic System Assembly	11	Electric Equipment Assembly Kawasaki FH500V-ES10	33
Hydraulic Pump Assembly No. 103-1942	13	Starter Assembly Kawasaki FH500V-ES10	34
Pump Idler and Belt Assembly	14		
Engine, Clutch and Muffler Assembly	16		
Deck and Wheel Gage Assembly	17		
Deck and Deflector Assembly No. 106-5884	15		
Deck Spindle Assembly	18		
Idler, Pulley/Lift Strut, Chain Assembly	19		
Electrical System Assembly	20		
Seat and Roll-Over-Protection-System Assembly	21		
Seat Assembly No. 107-1867	22		
Roll-Over-Protection-System Assembly No. 107-3066	23		
Valve/Camshaft Assembly Kawasaki FH500V-ES10	24		



Front Frame Assembly

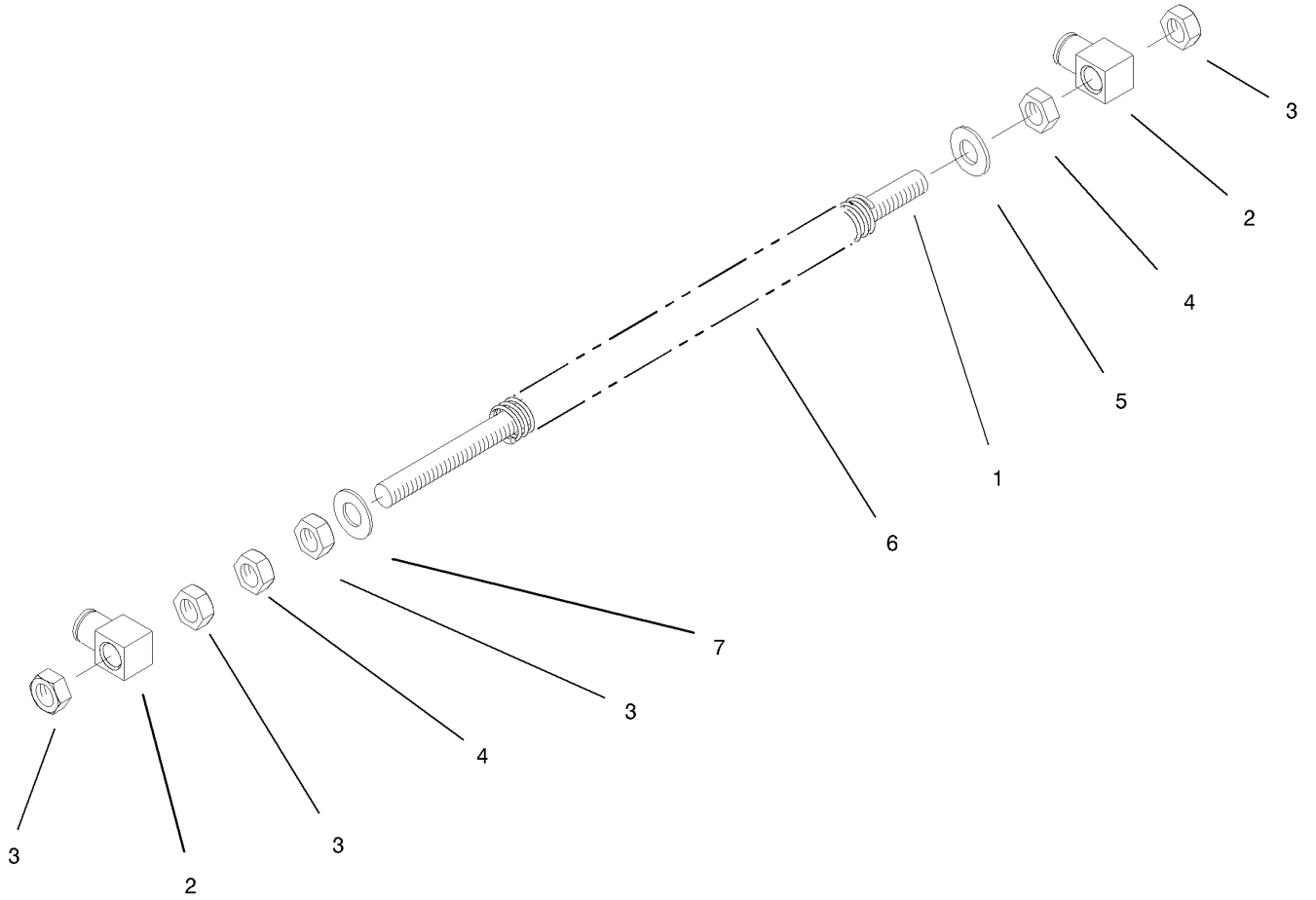
Ref	Part No.	Qty.	Description
1	1-634662	2	Caster Wheel ASM
3	1-632511-01	2	Caster
4	1-543511	2	Seal-Grease
5	254-94	4	Bearing-Cone, Taper
6	1-633508	6	Washer-Bellville
7	3296-51	2	Nut-Lock, NI
8	1-543513	2	Cap-Grease
9	322-3	6	Screw-HH
10	3256-23	4	Washer-Flat
11	107-2107	1	Floorpan ASM
11:2	1-633553	1	Pad-Antiskid
11:3	106-7451	1	Decal
11:4	107-2112	1	Decal-Warning
12	1-653049	1	Hinge-Floorpan
13	99-3930	1	Footrest ASM
13:2	99-3924	1	Decal-Service
13:3	98-5954	1	Decal-Missing, Cover
13:4	1-633553	1	Pad-Antiskid
14	3229-10	10	Screw-CARR
15	32128-33	10	Nut-HF
16	3230-1	2	Bolt-CARR
17	99-3870-01	2	Bracket-Floorpan
18	32128-20	8	Nut-HF
19	105-2625	1	Decal-Std, Safety

Ref	Part No.	Qty.	Description
20	107-1783	1	Front Frame ASM
20:2	1-633818	1	Decal-Warning
21	32151-103	6	Ring-Snap
22	3256-29	6	Washer-Flat
23	3290-357	12	Nut-HHF
24	98-5975	12	Washer-Belleville
25	323-7	12	Screw-HH
26	3218-2	2	Nut-Jam
27	3274-18	2	Screw-HSH
31	103-1987	2	Front Spring ASM
33	107-1791-01	1	LH Front Deck Lift ASM
34	107-1792-01	1	RH Front Deck Lift ASM
35	302-19	4	Fitting-Grease
36	1-811010	2	Plug
38	254-72	4	Bearing-Cup, Tapered



Caster Wheel Assembly No. 1-634662

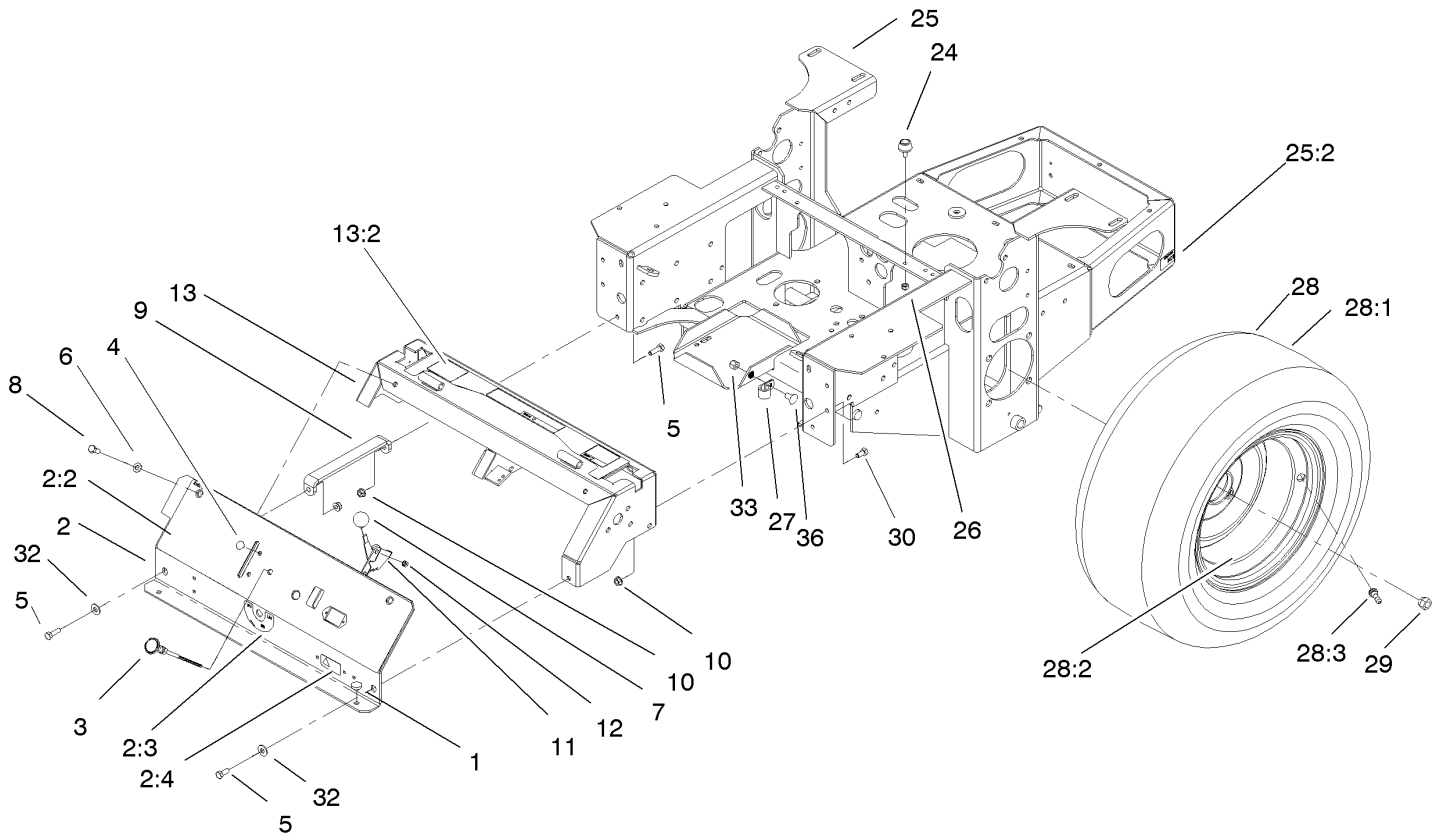
Ref	Part No.	Qty.	Description	
1	1-633582	1	Wheel And Tire ASM	
1:1	1-633002	1	Tire	
1:2	1-633583	1	Wheel	
1:3	1-633584	2	Bearing-Cup	
2	1-633581	2	Spacer-Bearing	
3	1-633580	2	Seal-Bearing	
4	1-633585	2	Bearing-Cone, Taper	
5	1-633579	1	Spacer-Caster, Front	
6	325-36	1	Screw-HH	
7	3296-45	1	Nut-Lock, NI	



Front Spring Assembly No. 103-1987

Ref	Part No.	Qty.	Description
1	1-653011	1	Rod-Lift, Deck
2	1-633441	2	Swivel-Deck Mount, Rear
3	3217-11	4	Nut-Hex
4	3218-6	2	Nut-Jam
5	1-805517	1	Washer
6	1-653009	1	Spring-Compression
7	3256-27	1	Washer-Flat

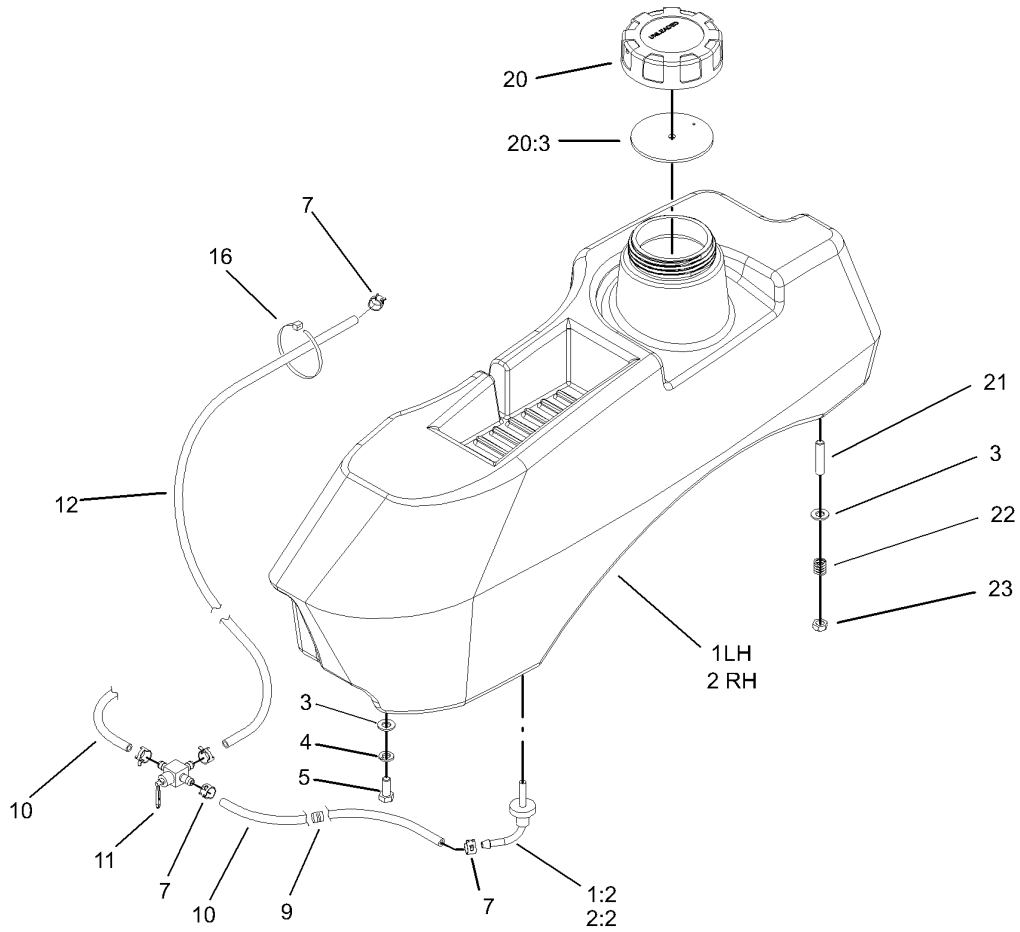
--	--	--	--



Main Frame Assembly

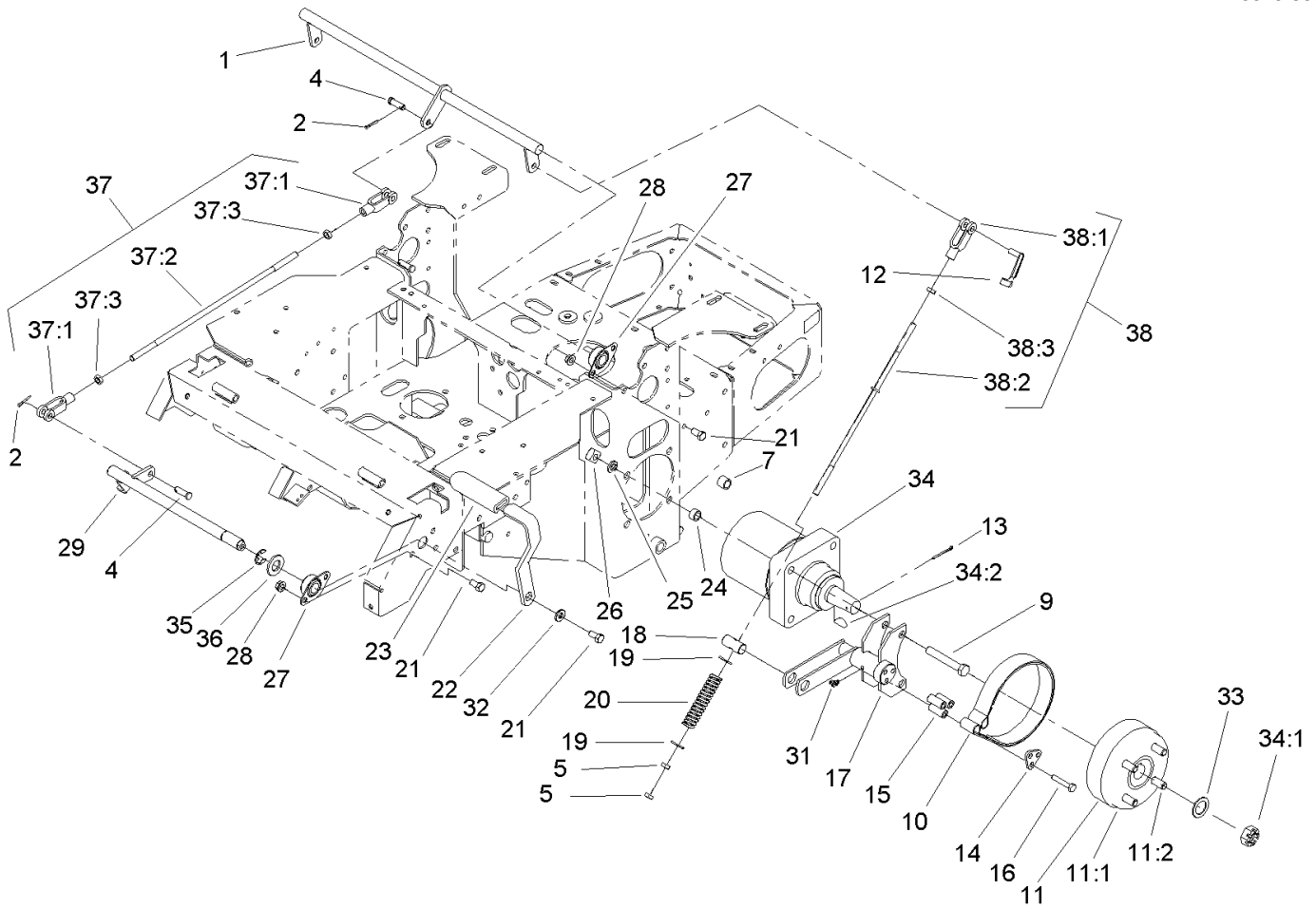
Ref	Part No.	Qty.	Description
1	1-513658	2	Bumper
2	106-6589	1	Console ASM
2:2	106-6586	1	Decal-Panel, Control
2:3	103-0262	1	Decal-Valve, Fuel
2:4	98-4387	1	Decal-Protection, Ear
3	1-603336	1	Control-Choke
4	1-807513	2	Bolt-CARR
5	322-5	2	Screw-HH
6	3256-23	2	Washer-Flat
7	1-513592	1	Knob-Ball
8	322-3	3	Screw-HH
9	1-653089-03	1	Bracket
10	32128-20	12	Nut-HF
11	1-633696	1	Cable-Throttle
12	3296-2	2	Nut-Lock
13	105-6123	1	Console Frame ASM
13:2	103-1997	1	Decal-Console, Top
24	1-523420	2	Bumper
25	107-2117	1	Main Frame ASM
25:2	65-2690	2	Decal-Surface, Hot
26	3296-42	2	Nut-Lock, NI
27	1-633396	1	Clip-Loom
28	1-653010	2	Wheel And Tire ASM
28:1	1-653160	1	Tire

Ref	Part No.	Qty.	Description
28:2	1-653158	1	Wheel
28:3	232-27	1	Stem-Valve
29	242-50	8	Nut-Lug
30	322-2	6	Screw-HH
32	3256-3	2	Washer-Flat
33	3296-39	1	Nut-Lock, NI
36	3231-21	1	Screw-CARR



Fuel System Assembly

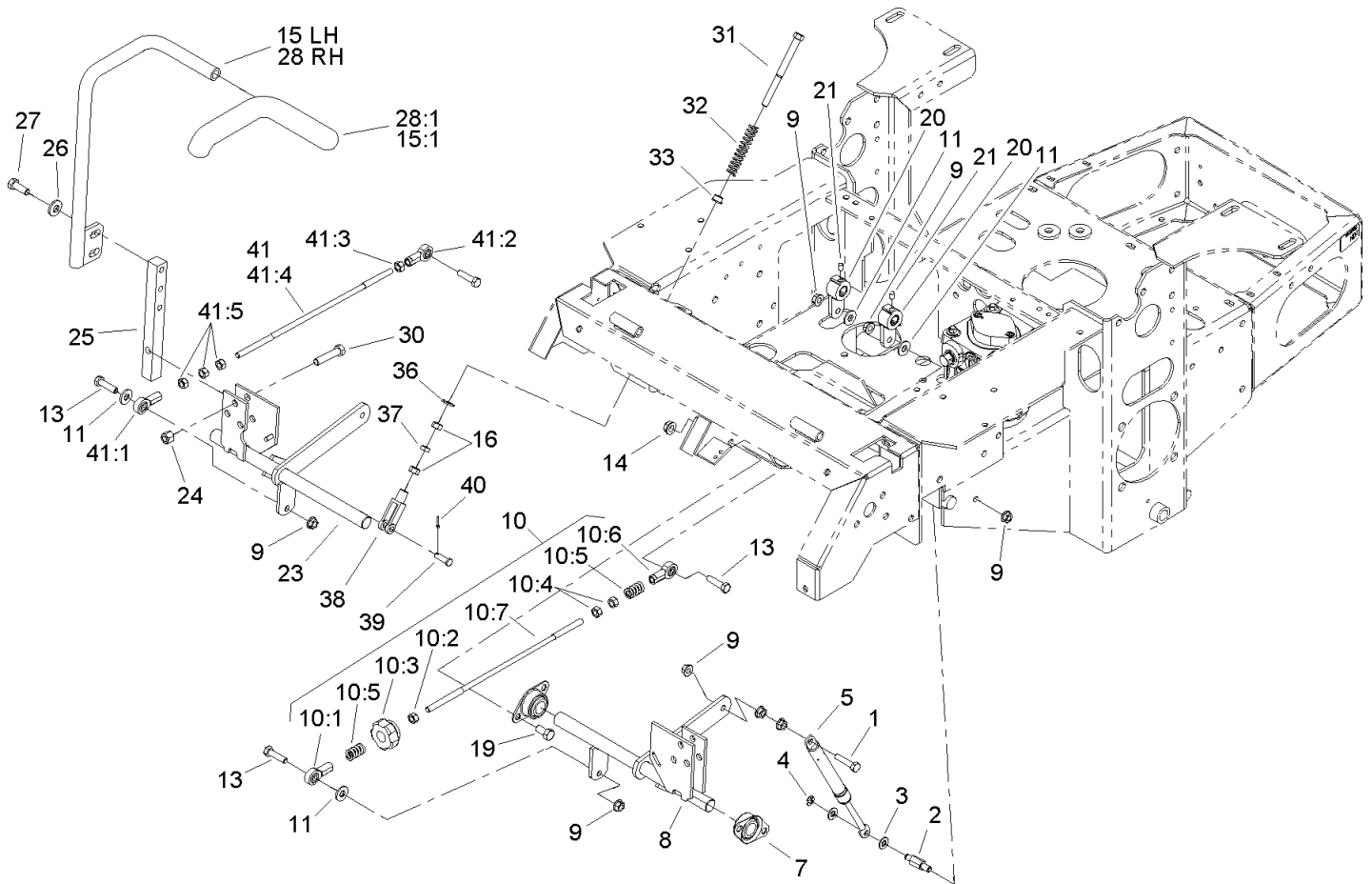
Ref	Part No.	Qty.	Description
1	106-9976	1	LH Fuel Tank ASM
1:2	103-2605	1	Fitting-Fuel, Bulkhead
2	106-9975	1	RH Fuel Tank ASM
2:2	103-2605	1	Fitting-Fuel, Bulkhead
3	3256-23	8	Washer-Flat
4	1-805005	4	Washer-Lock
5	322-3	4	Screw-HH
7	1-303077	6	Clamp
9	1-543296	2	Grommet
10	1-543526	2	Hose-Fuel
11	1-633347	1	Valve-Fuel
12	103-0216	1	Hose-Fuel
16	1-303335	1	Tie-Plastic
20	88-3980	2	Gas Cap ASM
20:3	88-4010	1	Gasket-Cap, Gas
21	1-633023	4	Stud
22	1-633349	4	Spring-Tank, Fuel
23	3296-47	4	Nut-Lock, NI



Parking Brake System Assembly

Ref	Part No.	Qty.	Description
1	1-652073-03	1	Crank-Brake, Park
2	3272-10	2	Pin-Cotter
4	1-808285	2	Pin-Clevis
5	3219-3	4	Nut-HH
7	1-653068	4	Spacer-Wheel
9	325-13	8	Screw-HH
10	103-0355	2	Band-Brake
11	103-0590	2	Hub-Wheel ASM
11:1	103-0589	1	Wheel Hub ASM
11:2	1-633926	4	Stud-Wheel
12	103-2399	2	Pin-Spring, Clevis
13	1-806800	2	Pin-Cotter
14	103-0374	2	Retainer-Band, Brake
15	103-0384	6	Spacer
16	322-9	6	Screw-HH
17	103-0352-03	2	Bracket-Brake
18	1-633144	2	Pin-Trunion
19	3256-4	4	Washer-Flat
20	1-633454	2	Spring-Brake
21	323-4	9	Screw-HH
22	1-653074-03	1	Handle-Brake, Park
23	1-633268	1	Grip-Lever, Brake
24	1-653069	4	Spacer-Wheel
25	3253-7	8	Washer-Lock

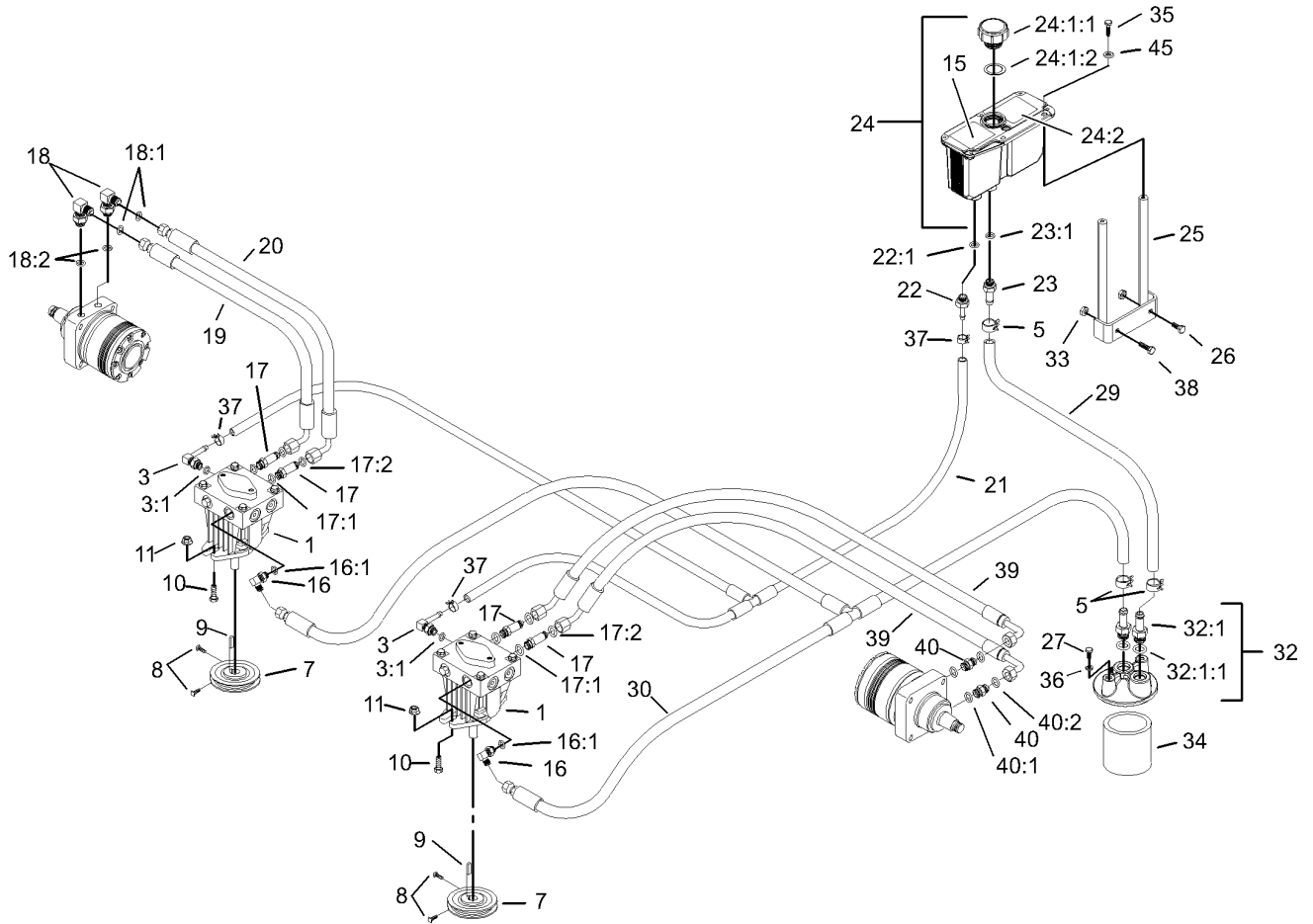
Ref	Part No.	Qty.	Description
26	103-0131	8	Nut-Square
27	1-633102	4	Bearing-Flange, Side
28	3290-357	8	Nut-HHF
29	103-3116	1	Shaft-Brake, Parking
31	1481	2	Fitting-Grease
32	98-5975	1	Washer-Belleville
33	1-523157	2	Washer-Spacer
34	1-523328	2	Motor-Wheel
34:1	1-809036	1	Nut-HH
34:2	3257-42	1	Key-Woodruff
①34:99	1-000139	1	Bearing Kit
①34:99	103-2748	1	Drive Link Kit
①34:99	1-000099	1	Seal Kit
35	32151-48	1	E-Ring
36	3256-28	1	Washer-Flat
37	103-4328	1	Brake Rod ASM
37:1	1-633131	2	Yoke-Linkage, Brake
37:2	1-653061	1	Linkage-Handle, Brake
37:3	3219-3	2	Nut-HH
38	103-4329	2	Brake Rod ASM
38:1	1-633131	1	Yoke-Linkage, Brake
38:2	103-0356	1	Rod-Brake
38:3	3219-3	1	Nut-HH



Steering Control Assembly

Ref	Part No.	Qty.	Description
1	1-403180	2	Screw-HH
2	103-4101	2	Pin-Damper
3	3256-23	4	Washer-Flat
4	32120-35	2	E-Ring
5	103-4079	2	Damper-Control, Motion
7	1-633102	4	Bearing-Flange, Side
8	103-4774	1	Control-Motion, LH
9	32128-20	12	Nut-HF
10	103-4326	1	Tracking Rod ASM
10:1	1-543017	1	Balljoint-RH
10:2	3219-2	1	Nut-Hex
10:3	103-3060	1	Knob-Tracking
10:4	1-804524	2	Nut
10:5	1-323245	2	Spring-Compression
10:6	1-633152	1	Balljoint-Thread, LH
10:7	103-3066	1	Link-Rod, Tracking
11	3256-3	4	Washer-Flat
13	322-6	4	Screw-HH
14	3290-357	8	Nut-HHF
15	103-0631	1	LH Lever ASM
15:1	1-633257	1	Grip-Control, Motion
16	3219-2	4	Nut-Hex
19	323-4	8	Screw-HH
20	103-3717	2	Arm-Control

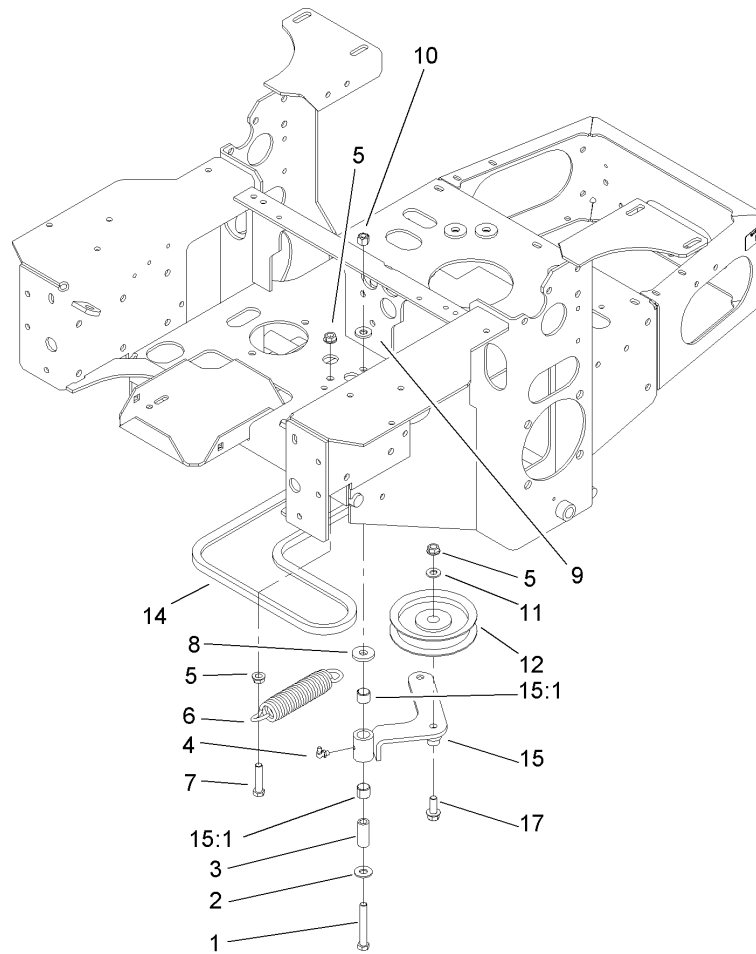
Ref	Part No.	Qty.	Description
21	1-803022	2	Screw-Set
23	103-4773	1	Control-Motion, RH
24	3296-39	6	Nut-Lock, NI
25	103-0407	2	Arm-Shaft, Control
26	98-5975	4	Washer-Belleville
27	323-6	4	Screw-HH
28	103-0632	1	RH Lever ASM
28:1	1-633257	1	Grip-Control, Motion
30	323-9	6	Screw-HH
31	1-603737	2	Bolt-Return, Neutral
32	1-603807	2	Spring-Return, Neutral
33	1-603735	2	Bushing-Flanged
36	3256-2	2	Washer-Flat
37	3220-2	2	Nut
38	1-303105	2	Yoke-Adjustable
39	1-808280	2	Pin-Clevis
40	3272-5	2	Pin-Cotter
41	103-4327	1	Tracking ASM
41:1	1-543017	1	Balljoint-RH
41:2	1-633152	1	Balljoint-Thread, LH
41:3	1-804524	1	Nut
41:4	103-3066	1	Link-Rod, Tracking
41:5	3219-2	3	Nut-Hex



Hydraulic System Assembly

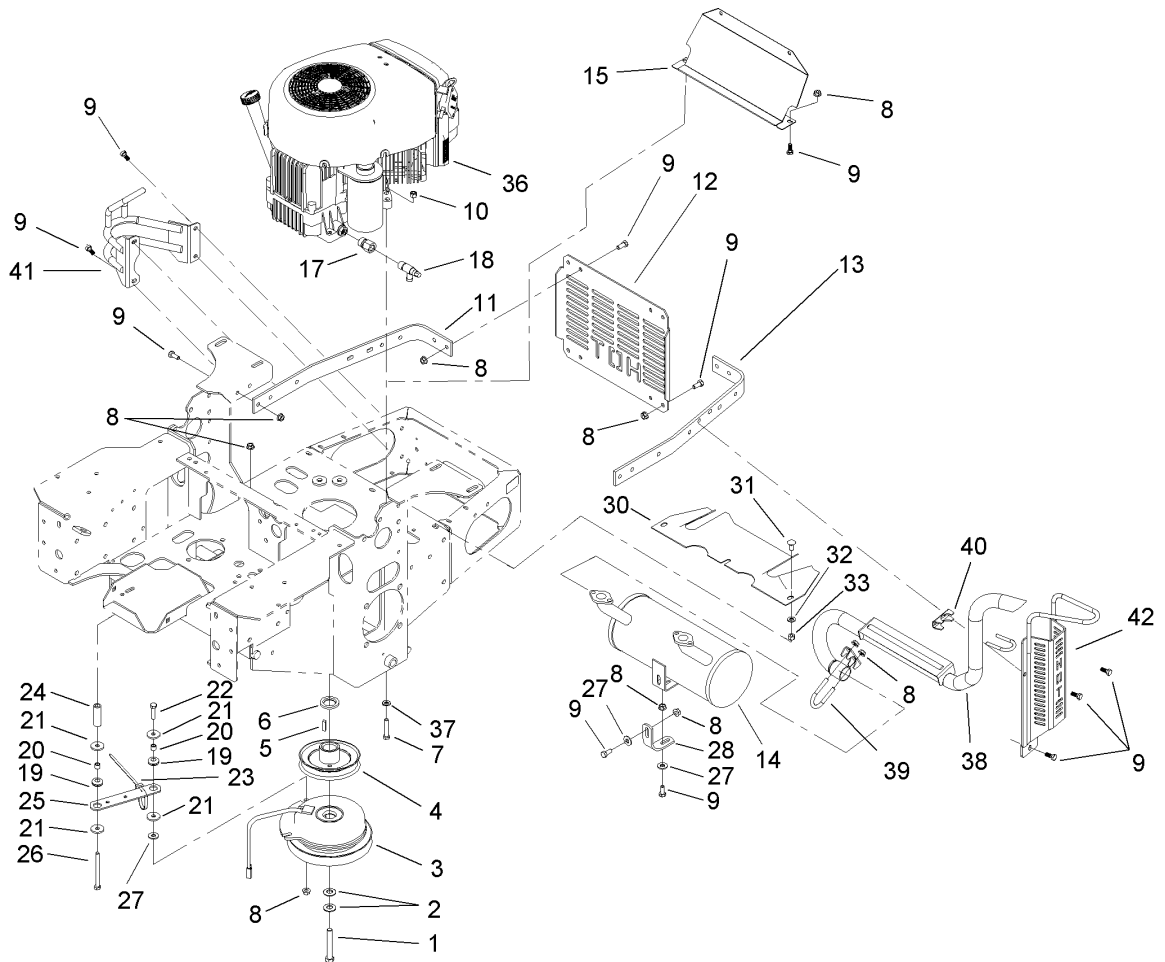
Ref	Part No.	Qty.	Description
1	103-1942	2	Pump-HYD
3	103-1799	2	Elbow-90 DEG
3:1	237-42	1	O-Ring
5	103-1988	3	Clamp-Hose
7	1-653156	2	Pulley
8	1-803050	4	Screw-Set
9	1-807272	2	Key
10	323-7	4	Screw-HH
11	3290-357	4	Nut-HHF
15	103-2644	1	Decal-Exhaust
16	103-1802	2	Fitting-Hyd, 90 DEG
16:1	237-42	1	O-Ring
17	103-1940	4	Adapter-Hyd, Straight
17:1	237-79	1	O-Ring
17:2	1-603992	1	O-Ring
18	1-633605	2	Fitting-Hyd, 90 DEG
18:1	1-603992	1	O-Ring
18:2	237-80	1	O-Ring
19	1-653186	1	Hose-Front
20	1-653187	1	Hose-Rh, Rear
21	103-2357	1	HYD Hose ASM
22	103-1801	1	Adapter-Straight
22:1	237-42	1	O-Ring
23	103-1912	1	Adapter-Straight

Ref	Part No.	Qty.	Description
23:1	237-42	1	O-Ring
24	103-1947	1	HYD Reservoir ASM
24:1		1	Reservoir-HYD
24:1:1	103-1948	1	Cap-Reservoir, HYD
24:1:2	103-1949	1	Gasket-Cap
24:2	1-523552	1	Decal-Tank, HYD
25	103-3071-03	1	Stand-Reservoir
26	322-3	1	Screw-HH
27	321-3	2	Screw-HH
29	103-3077	1	HYD Hose ASM
30	103-2930	1	HYD Hose ASM
32	103-2889	1	Filter Head ASM
32:1	103-1912	2	Adapter-Straight
32:1:1	237-42	1	O-Ring
33	32128-20	2	Nut-HF
34	1-633750	1	Filter-HYD
34	1-633752	1	Filter-Hyd, Winter
35	321-6	2	Screw-HH
36	1-805004	2	Washer-Lock
37	103-1716	3	Clamp-Hose
38	322-5	1	Screw-HH
39	103-3809	2	Hose-LH
40	1-603991	2	Fitting-Straight
40:1	237-80	1	O-Ring



Pump Idler and Belt Assembly

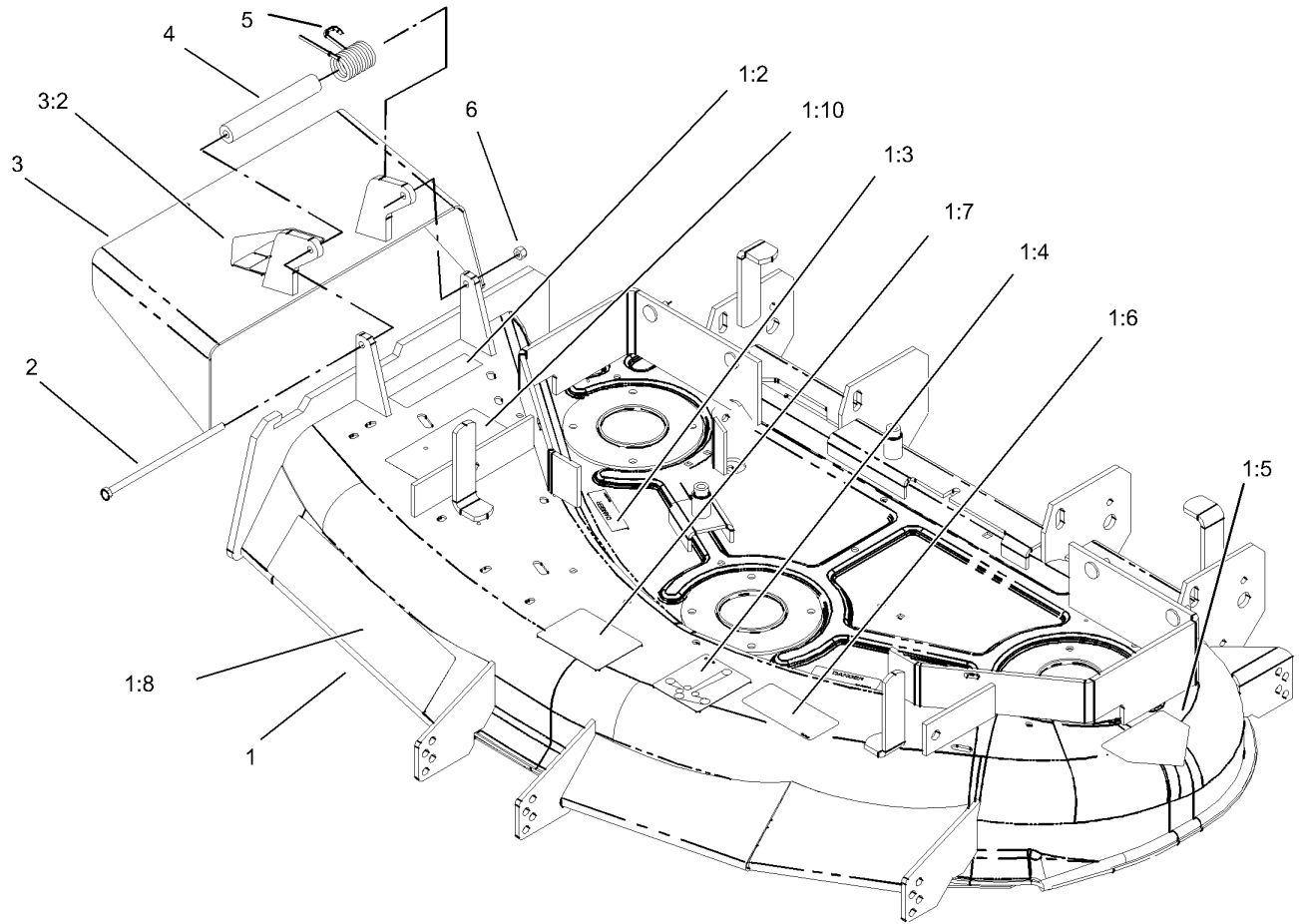
Ref	Part No.	Qty.	Description				
1	323-13	1	Screw-HH				
2	3256-4	1	Washer-Flat				
3	1-603044	1	Bushing				
4	302-40	1	Fitting-Grease				
5	3290-357	3	Nut-HHF				
6	103-4480	1	Spring-Extension				
7	323-9	2	Screw-HH				
8	63-8410	1	Washer				
9	98-5975	1	Washer-Belleville				
10	3296-39	1	Nut-Lock, NI				
11	3256-24	2	Washer-Flat				
12	1-603843	1	Pulley-Idler				
14	103-4760	1	Belt-Cog				
15	103-4482	1	Idler Arm ASM				
15:1	103-4681	2	Sleeve-Bearing				
17	3234-11	1	Screw-HHF				



Engine, Clutch and Muffler Assembly

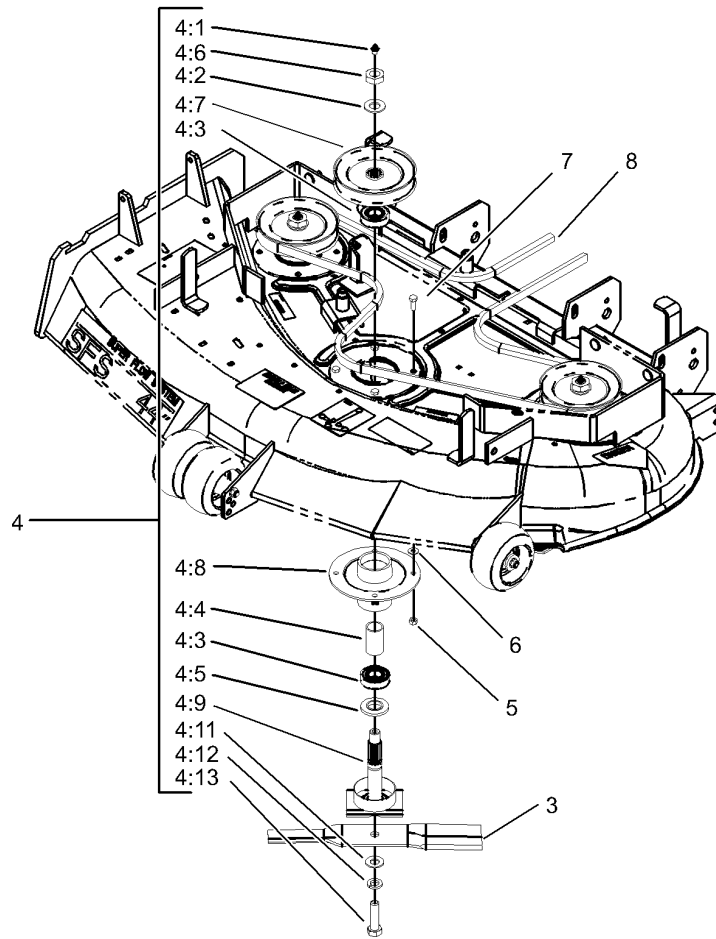
Ref	Part No.	Qty.	Description
1	3212-12	1	Screw-HH
2	1-603610	2	Washer-Spring
3	103-0690	1	Clutch
4	103-3913	1	Sheave W/ Hub
5	1-807259	1	Key
6	103-2308	1	Spacer-Crankshaft
7	322-9	4	Screw-HH
8	32128-20	27	Nut-HF
9	322-3	21	Screw-HH
10	3296-29	4	Nut-Lock, NI
11	103-3078-03	1	Strap-Guard, RH Engine
12	1-653095-03	1	Shield-Engine
13	103-3164-03	1	Strap-Guard, LH Engine
14	103-1324	1	Muffler
15	103-2560-03	1	Shield-Heat
17	103-1966	1	Adapter
18	103-1965	1	Valve-Drain, Oil
19	1-633630	2	Grommet-Brake
20	1-633545	2	Spacer
21	1-613235	4	Washer
22	322-6	1	Screw-HH
23	1-303335	2	Tie-Plastic
24	103-2614	1	Spacer
25	1-633543-03	1	Strap-Clutch, Brake

Ref	Part No.	Qty.	Description
26	322-22	1	Screw-HH
27	3256-3	3	Washer-Flat
28	1-653196	1	Bracket-Support, Muffler
30	1-653565-03	1	Shield-Heat
31	3230-1	3	Bolt-CARR
32	3256-23	3	Washer-Flat
33	3296-29	3	Nut-Lock, NI
36		1	Engine-Kawasaki, Fh500v-Es10
37	1-303334	2	Washer-Spring
38	103-2599	1	Tailpipe
39	103-2630	1	Clamp
40	103-2631	1	Clamp
41	103-2564-03	1	RH Exhaust Guard ASM
42	103-2566-03	1	LH Exhaust Guard ASM



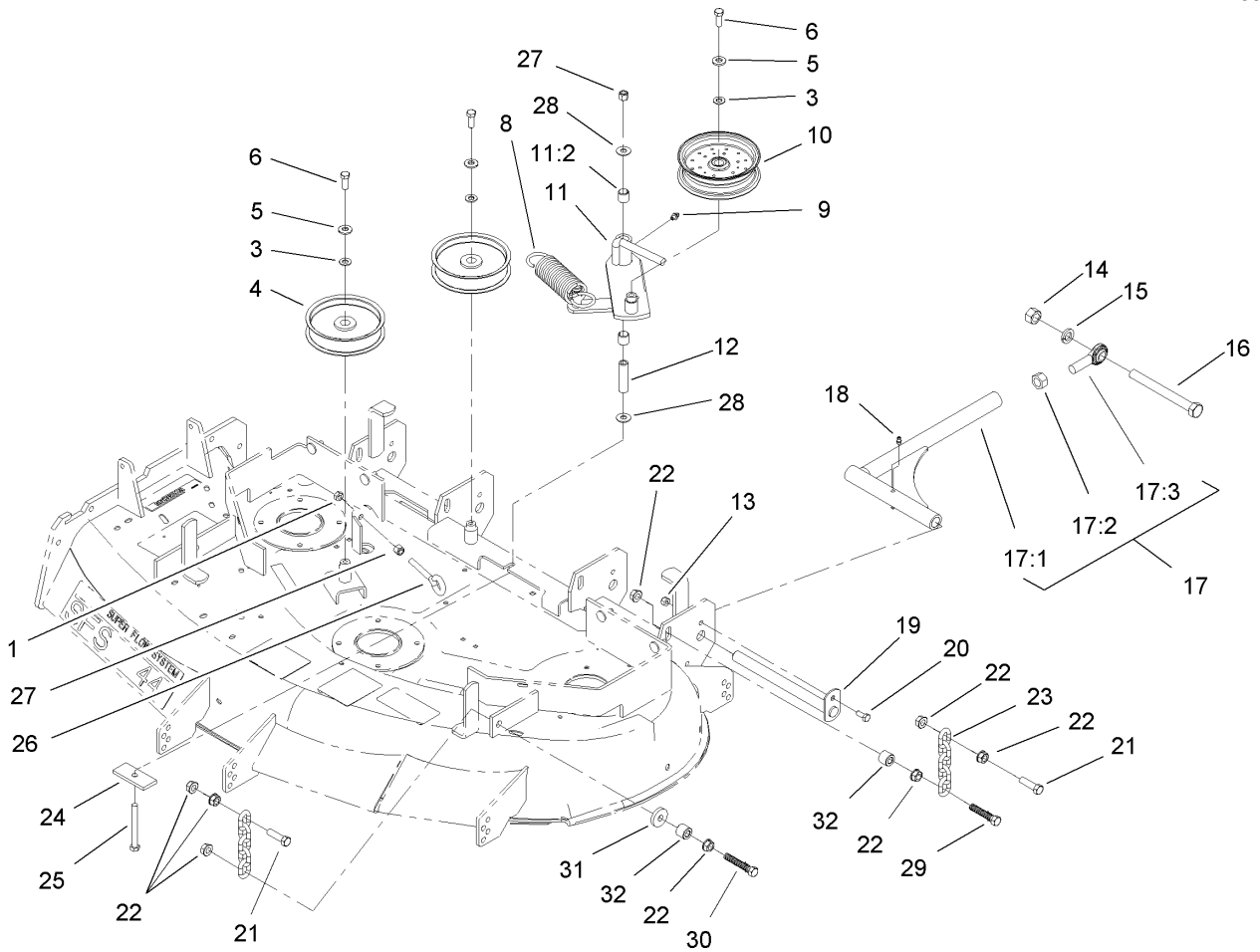
Deck and Deflector Assembly No. 106-5884

Ref	Part No.	Qty.	Description				
1	106-5883	1	Deck ASM				
1:2	104-8569	1	Decal-Warning				
1:3	98-5954	3	Decal-Missing, Cover				
1:4	99-3943	1	Decal-Routing, Belt				
1:5	43-8480	1	Decal-Danger				
1:6	93-7818	1	Decal-Torque, Blade Bolt				
1:7	98-3798	1	Decal-Wheel, Gage				
1:8	98-8028	1	Decal				
1:10	66-1340	1	Decal-Danger				
2	322-50	1	Screw-HH				
3	105-4625	1	Deflector ASM				
3:2	93-1122	1	Decal-Danger				
4	105-4622	1	Spacer				
5	104-8554	1	Spring-Torsion				
6	3296-29	1	Nut-Lock, NI				



Deck Spindle Assembly

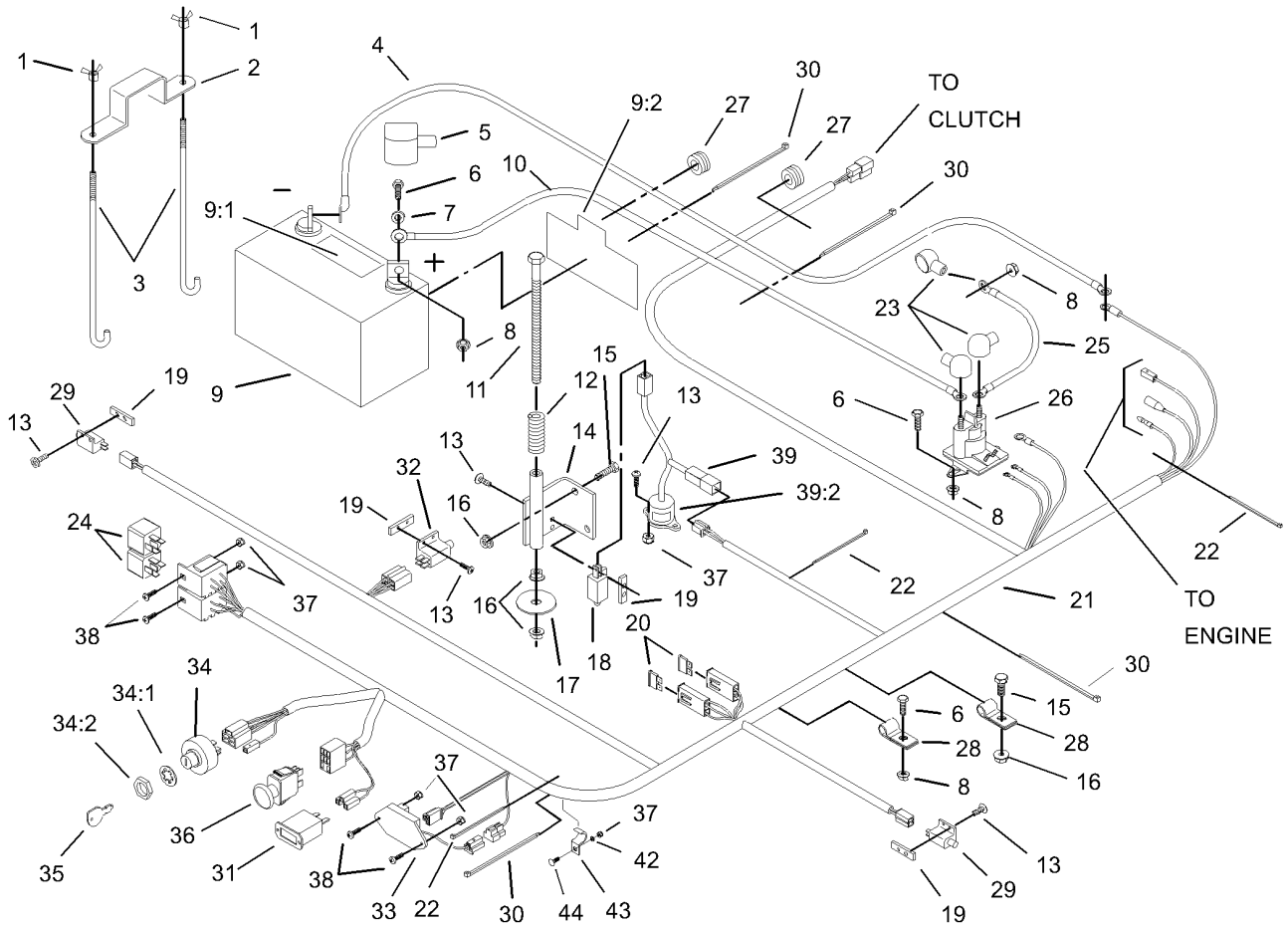
Ref	Part No.	Qty.	Description				
3	54-0010	3	Blade				
4	100-3977	3	Spindle Housing ASM				
4:1	302-2	1	Fitting-Grease				
4:2	7-4150	1	Washer				
4:3	251-257	2	Bearing-Ball				
4:4	67-7580	1	Spacer-Bearing				
4:5	67-7570	1	Spacer-Spindle				
4:6	32146-20	1	Nut-Jam				
4:7	100-3975	1	Pulley And Hub ASM				
4:8	67-7590	1	Housing-Spindle				
4:9	100-3974	1	Spindle Shaft ASM				
4:11	3256-27	1	Washer-Flat				
4:12	3253-8	1	Washer-Lock				
4:13	51-4060	1	Screw-Blade				
5	32152-1	12	Nut-Lock, NI				
6	3256-2	4	Washer-Flat				
7	322-4	12	Screw-HH				
8	98-3780	1	V-Belt-Drive				



Idler, Pulley/Lift Strut, Chain Assembly

Ref	Part No.	Qty.	Description
1	3217-7	1	Nut-Hex
3	3256-24	3	Washer-Flat
4	1-613098	2	Pulley-Idler
5	98-5975	3	Washer-Belleville
6	323-6	3	Screw-HH
8	103-3330	1	Spring-Extension
9	302-40	1	Fitting-Grease
10	99-8912	1	Pulley-Idler, Flat
11	99-8914	1	Idler Arm ASM
11:2	1-513034	2	Sleeve-Bearing
12	1-603384	1	Bushing-Pivot, Idler
13	3296-29	2	Nut-Lock, NI
14	3217-11	2	Nut-Hex
15	3253-8	2	Washer-Lock
16	1-800344	2	Screw
17	103-1081	2	Strut ASM
17:1	103-1072-01	1	Strut
17:2	3219-6	1	Nut-Hex
17:3	1-633029	1	Balljoint-Spherical
18	302-19	4	Fitting-Grease
19	1-632199-01	2	Pin-Strut
20	322-3	2	Screw-HH
21	1-800811	8	Screw-Cap, HH
22	32128-37	16	Nut-HF

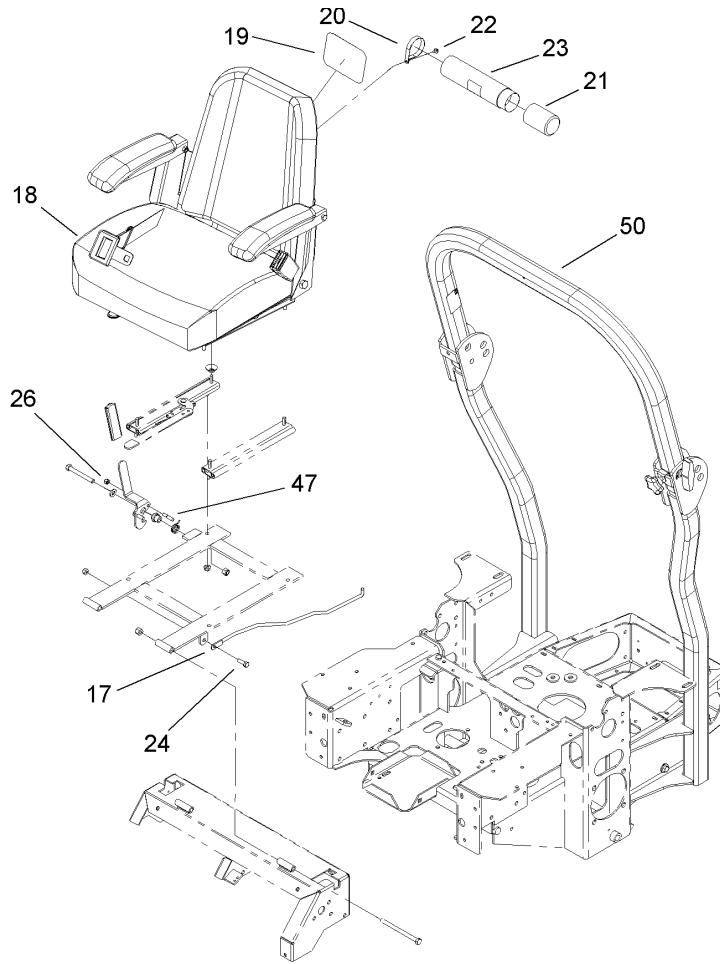
Ref	Part No.	Qty.	Description
23	1-633447	4	Chain-Lift, Deck
24	99-3946-01	1	Plate-Retainer, Bolt
25	1-800805	1	Screw-HH
26	94-2547	1	Bolt-Eye
27	3296-39	2	Nut-Lock, NI
28	1-809107	2	Washer-Hardened
29	107-3076	2	Screw Hhc 7/16-14x2.25
30	107-3077	2	Screw Hhc 7/16-14 X 2.5
31	112843	2	Washer
32	100-7123	4	Spacer-Bedbar



Electrical System Assembly

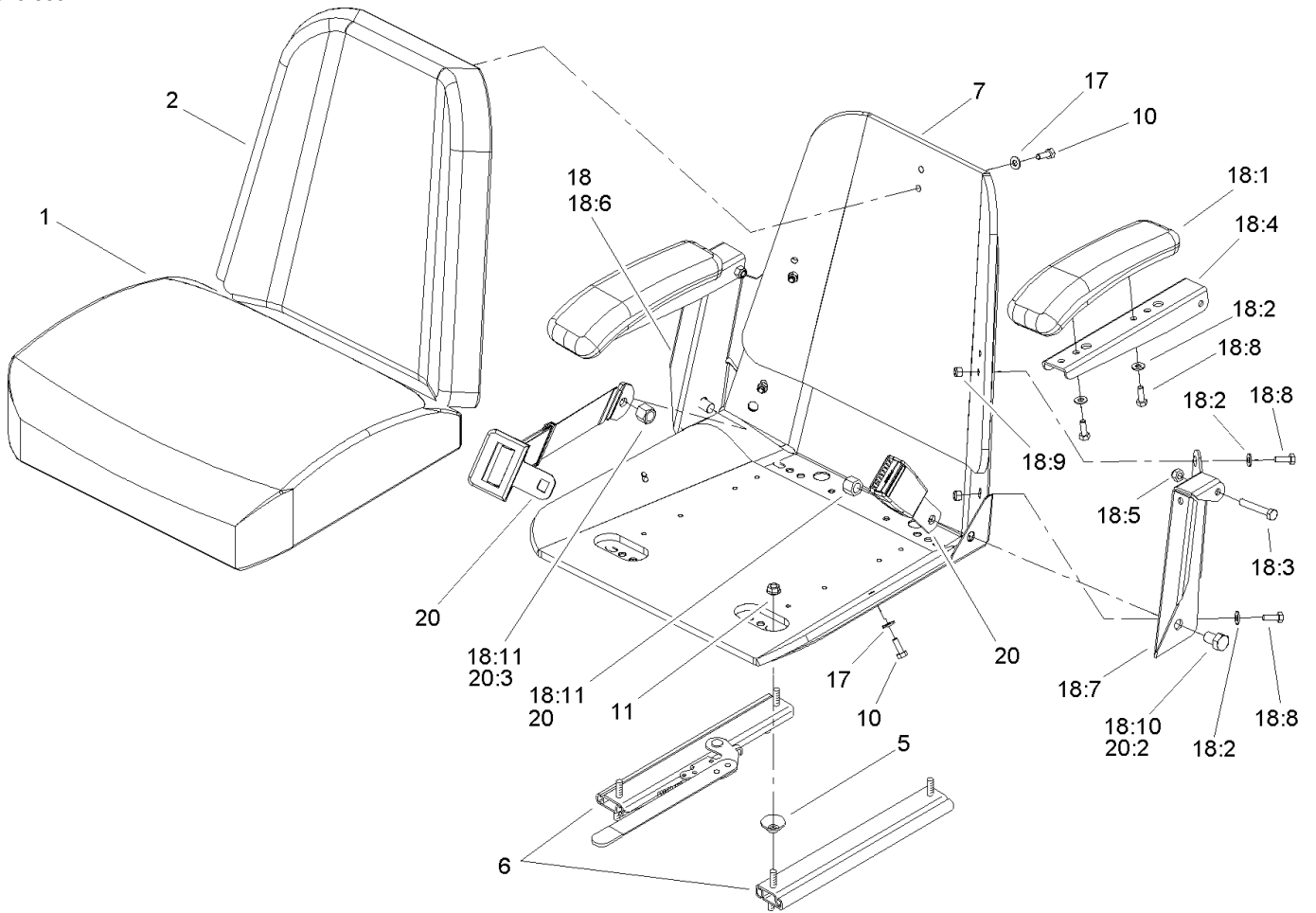
Ref	Part No.	Qty.	Description
1	1-543792	2	Wingnut
2	1-633652-03	1	Strap-Holddown
3	1-633651	2	Bolt-Holddown
4	103-0705	1	Cable-Ground, Negative
5	1-543391	1	Insulator-Battery
6	321-4	5	Screw-HH
7	3256-2	2	Washer-Flat
8	32128-33	6	Nut-HF
9	105-1692	1	Battery
9:1	104-4163	1	Decal-Battery
9:2	104-4164	1	Decal-Battery
10	103-0707	1	Cable-Battery, Positive
11	1-800282	1	Screw-HH
12	1-523415	1	Spring-Switch, Seat
13	3290-500	10	Screw-PPH
14	1-652072-03	1	Bracket-Switch, Seat
15	322-3	3	Screw-HH
16	32128-20	5	Nut-HF
17	1-653036	1	Washer
18	1-513152	1	Switch-Closed, Normally
19	1-633181	4	Plate-Tapped
20	1-816001	2	Fuse-Blade Type, 20 Amp
21	103-0623	1	Harness-Wire
22	1-303287	3	Tie-Plastic

Ref	Part No.	Qty.	Description
23	1-543393	3	Insulator-Solenoid
24	1-643275	2	Relay
25	1-633306	1	Wire-Starter
26	1-513075	1	Switch-Solenoid
27	1-543286	2	Grommet
28	1-633396	2	Clip-Loom
29	1-513051	2	Switch-Open, Normally
30	1-303335	4	Tie-Plastic
31	1-513374	1	Meter-Hour
32	1-633111	1	Switch
33	100-6186	1	Module-Delay, Seat
34	88-9830	1	Key Switch ASM
34:1	3254-5	1	Washer-Tooth
34:2	218-461	1	Nut-HH
35	63-8360	2	Key-Ignition
36	1-633673	1	Switch-Delta
37	3296-2	7	Nut-Lock
38	1-807513	4	Bolt-CARR
39	1-644427	1	Tilt Switch ASM
39:2	1-643401	1	Decal-Switch, Mercury
42	3256-14	1	Washer-Flat
43	103-1193	1	Clip-Half, Loom
44	1-807533	1	Bolt-CARR



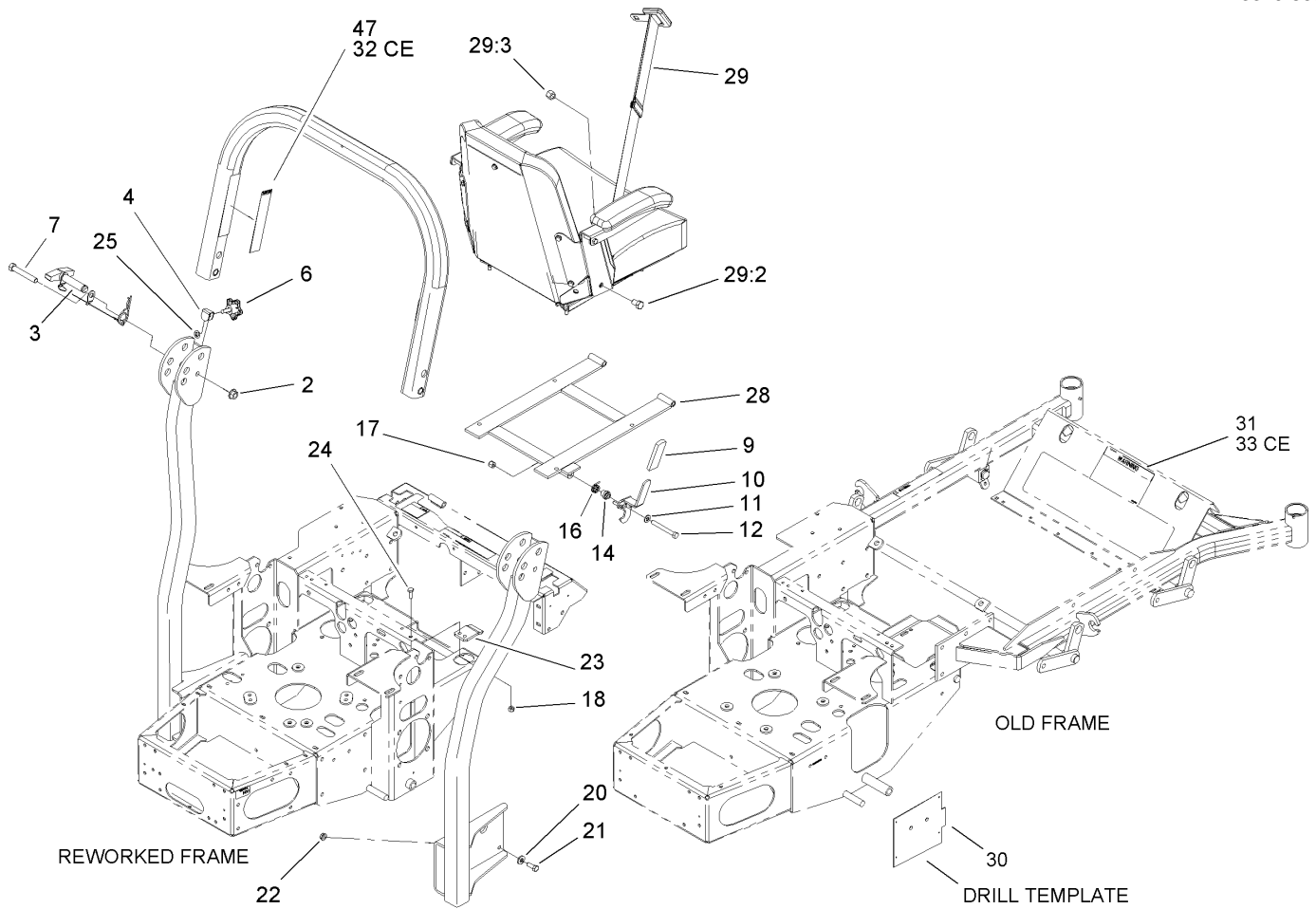
Seat and Roll-Over-Protection-System Assembly

Ref	Part No.	Qty.	Description				
17	103-1731	1	Rod-Retainer, Seat				
18	107-1867	1	Seat ASM				
19	99-4693	1	Decal				
20	2412-120	2	R-Clamp				
21	104-7048	1	Cap-Housing				
22	32104-76	2	Screw				
23	104-7050	1	Housing-Manual				
24	322-5	1	Screw-HH				
26	3296-42	2	Nut-Lock, NI				
47	107-0095	2	Pin				
50	107-3066	1	Rops ASM				



Seat Assembly No. 107-1867

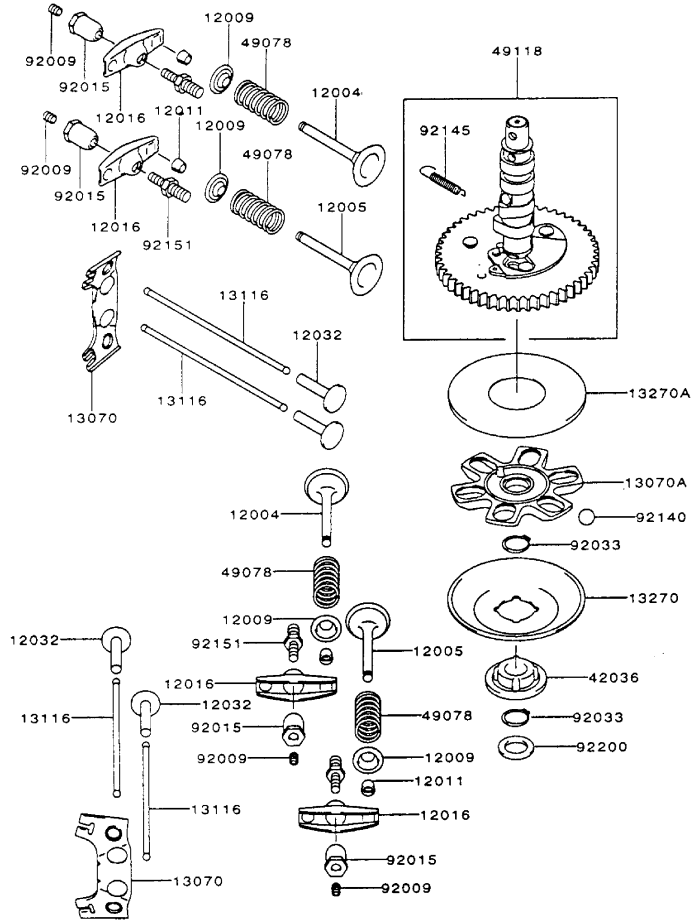
Ref	Part No.	Qty.	Description
1	103-0290	1	Cushion-Seat, Bottom
2	104-7754	1	Cushion-Seat, Back
5	1-543401	4	Spacer-Track
6	1-643255	1	Track-Seat
7	1-633859	1	Frame-Seat
10	321-30	11	Screw-HH
11	32128-20	4	Nut-HF
17	3256-22	11	Washer-Flat
18	105-3620	1	Armrest Kit
18:1	1-633710	2	Cushion-Armrest
18:2	3256-22	4	Washer-Flat
18:3	322-10	2	Screw-HH
18:4	105-3623	2	Channel-Armrest
18:5	32153-3	2	Nut-Lock
18:6	105-3621	1	Bracket-Armrest, RH
18:7	105-3622	1	Bracket-Armrest, LH
18:8	321-30	6	Screw-HH
18:9	3296-42	4	Nut-Lock, NI
18:10	325-2	2	Screw-HH
18:11	3296-23	2	Nut-Lock, NI
20	103-4469	1	Seatbelt Kit
20:2	3212-4	2	Screw-HH
20:3	3296-38	2	Nut-Lock NI



Roll-Over-Protection-System Assembly No. 107-3066

Ref	Part No.	Qty.	Description
2	32128-23	2	Nut-HF
3	107-3060	2	Pin Latch ASM
4	107-3124	2	Clip
6	106-0887	2	Knob
7	325-13	2	Screw-HH
9	62-9130	1	Grip-Handle
10	107-3083	1	Latch ASM
11	3256-24	1	Washer-Flat
12	323-20	1	Screw-HH
14	107-0075	1	Bushing-Latch, Seat
16	107-0076	1	Spring-Torsion
17	3296-39	1	Nut-Lock, NI
18	3296-29	2	Nut-Lock, NI
20	98-5975	8	Washer-Belleville
21	323-6	8	Screw-HH
22	3290-357	8	Nut-HHF
23	107-3059	1	Catch-Latch, Seat
24	322-4	2	Screw-HH
25	107-3154	2	Nut-Push
28	107-3052-03	1	Frame-Support, Seat
29	103-4469	1	Seatbelt Kit
29:2	3212-4	2	Screw-HH
29:3	3296-38	2	Nut-Lock NI
30	107-3079	1	Template-Mount, Rops

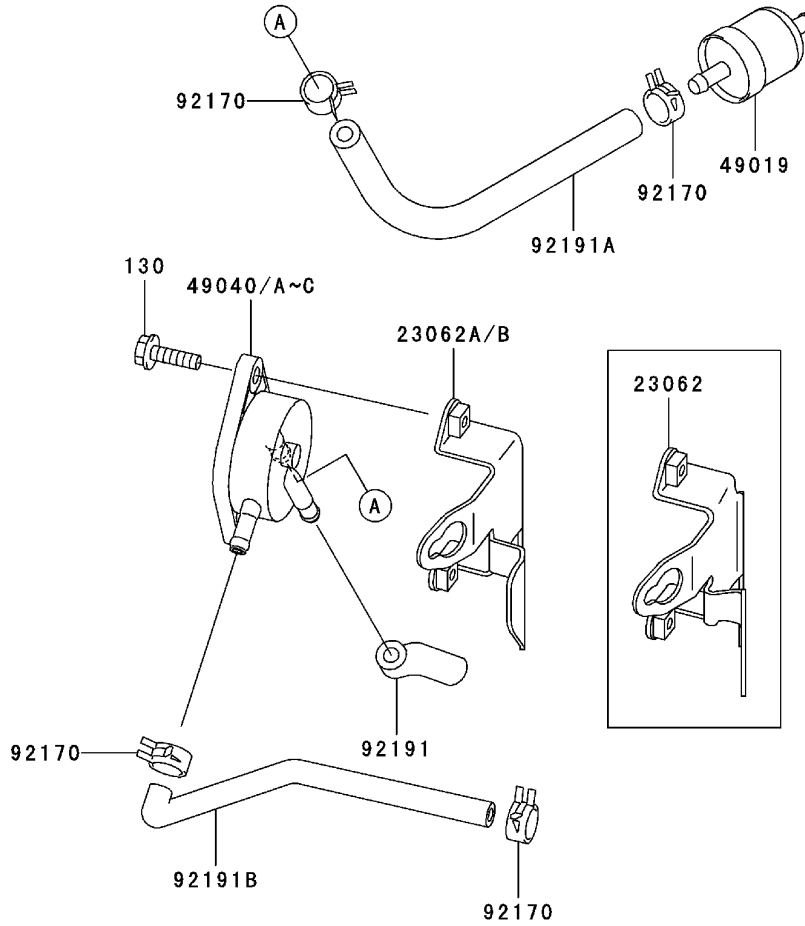
Ref	Part No.	Qty.	Description
31	107-2112	1	Decal-Warning
32	107-3069	1	Decal-Warning, Folding Rops Ce
33	107-1866	1	Decal-Danger, Slope
47	107-2102	1	Decal-Warning, Folding Rops



Valve/Camshaft Assembly Kawasaki FH500V-ES10

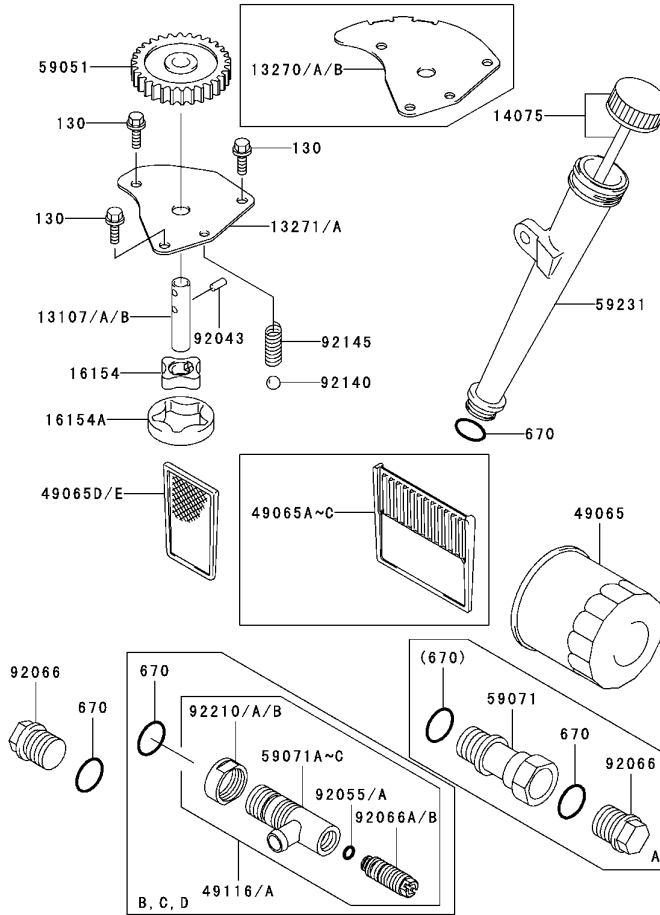
Ref	Part No.	Qty.	Description
⑤12004	12004-7001	2	Valve-Intake
⑤12005	12005-7001	2	Valve-Exhaust
⑤12009	12009-7001	4	Retainer-Valve Spring
⑤12011	12011-2056	8	Collet
⑤12016	12016-7001	4	Arm-Rocker
⑤12032	12032-7001	4	Tappet
⑤13070	13070-7001	2	Guide
⑤13070A	13070-7002	1	Guide
⑤13116	13116-2057	4	Rod Push
⑤13270	13270-7002	1	Plate
⑤13270A	13270-7003	1	Plate
⑤42036	42036-7001	1	Sleeve
⑤49078	49078-7001	4	Spring-Engine Valve
⑤49118	49118-7002	1	Camshaft-Comp
⑤92009	92009-2341	4	Screw
⑤92015	92015-2253	4	Nut
⑤92033	92033-7001	2	Ring-Snap
⑤92140	92140-7002	6	Ball
⑤92145	92145-7001	1	Spring
⑤92151	92151-7001	4	Bolt
⑤92200	92200-7001	1	Washer

--	--	--	--



Fuel Tank/Fuel Valve Assembly Kawasaki FH500V-ES10

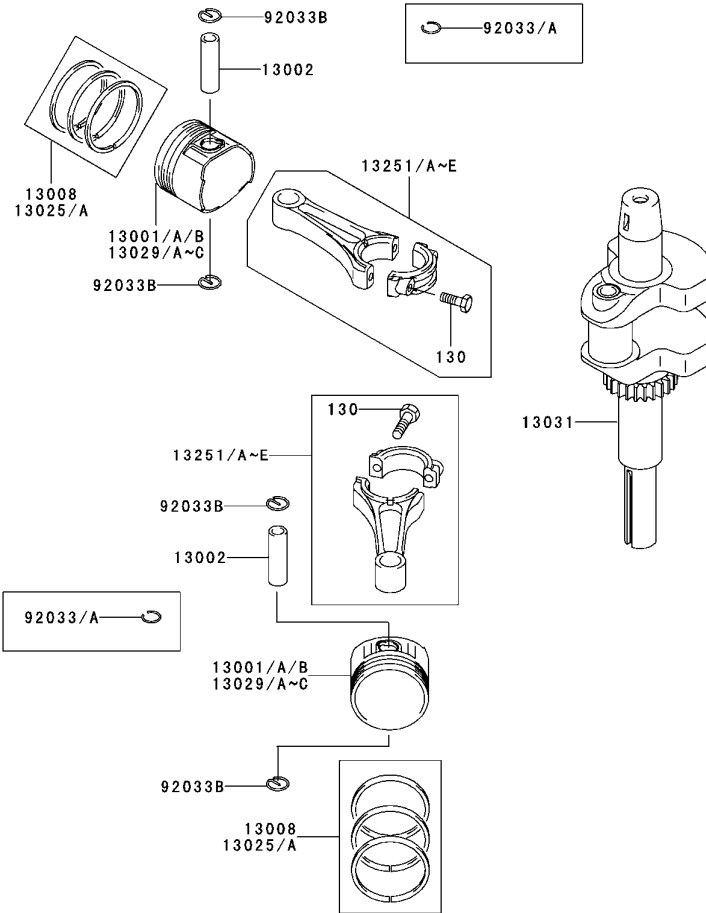
Ref	Part No.	Qty.	Description
⑤23062A	23062-7004-9H	1	Bracket-Comp
⑤49019	49019-7001	1	Filter-Fuel
⑤49040B	49040-7001	1	Pump-Fuel
⑤92170	92170-2088	4	Clamp
⑤92191	92191-7002	1	Tube
⑤92191A	92191-7003	1	Tube
⑤92191B	92191-7004	1	Tube
⑤130	130B0620	2	Bolt-Flanged



Lubrication Equipment Assembly Kawasaki FH500V-ES10

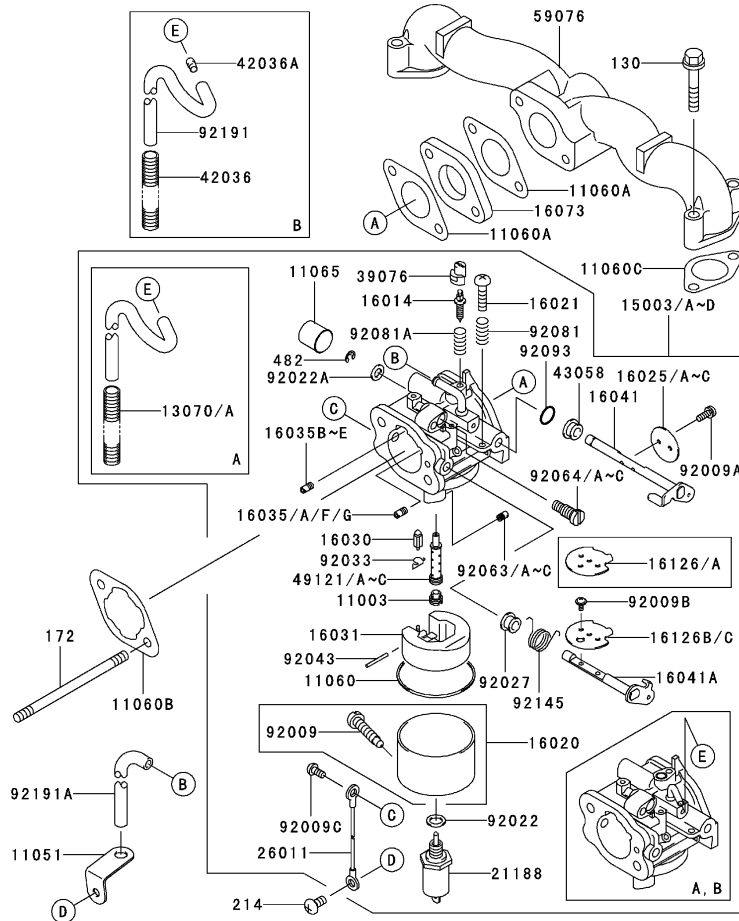
Ref	Part No.	Qty.	Description
⑤13107A	13107-7009	1	Shaft
⑤13271	13271-7017	1	Plate
⑤14075	14075-7001	1	Cap ASM
⑤16154	16154-2053	1	Rotor-Pump,in
⑤16154A	16154-2054	1	Rotor-Pump,out
⑤49065	49065-2078	1	Filter-Oil
⑤49065D	49065-7001	1	Filter-Oil
⑤59051	59051-7004	1	Gear-Spur
⑤59231	59231-7001	1	Filler
⑤92043	92043-7003	1	Pin
⑤92066	92066-7003	2	Plug
⑤92140	92140-7003	1	Ball
⑤92145	92145-7002	1	Spring
⑤130	130B0612	3	Bolt-Flanged
⑤670	670D2016	1	O-Ring

--	--	--	--



Piston/Crankshaft Assembly Kawasaki FH500V-ES10

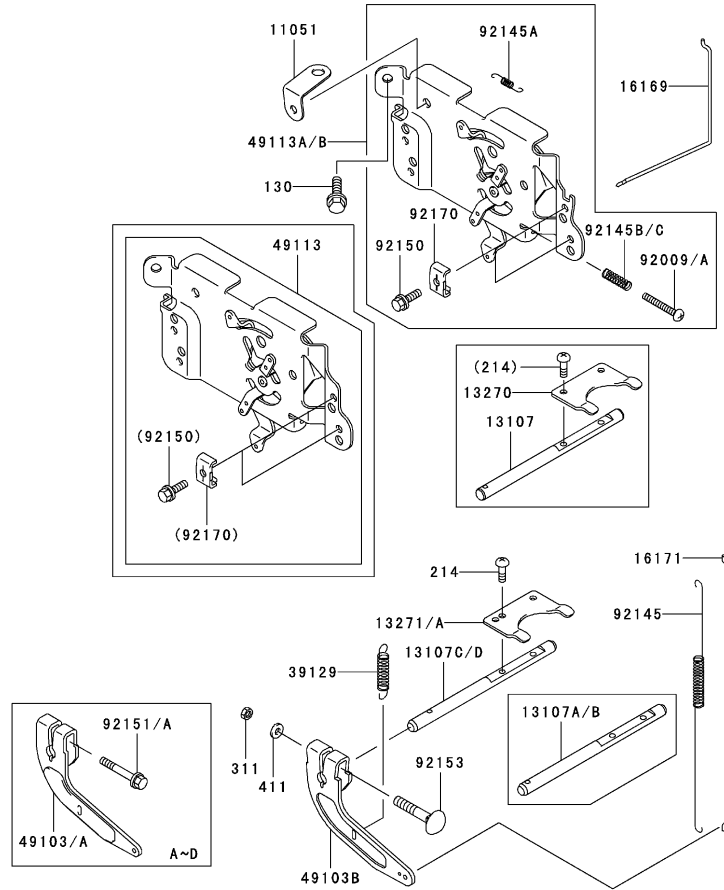
Ref	Part No.	Qty.	Description				
①13001B	13001-7008	2	Piston-Engine				
①13002	13002-7001	2	Pin-Piston				
①13008	13008-6055	2	Ring Set-Piston				
①13029C	13029-7004	0	Piston-Engine				
①13031	13031-7001	1	Crankshaft-Comp				
①13251B	13251-7003	2	Connecting Rod ASM				
①13251D	13251-7004	2	Connecting Rod ASM				
①92033B	92033-7005	4	Ring-Snap				
①130	130G0630	4	Bolt-Flanged				



Carburetor Assembly Kawasaki FH500V-ES10

Ref	Part No.	Qty.	Description
⑤11003	11003-2105	1	Seat-Valve
⑤11060	11060-2406	1	Gasket
⑤11060A	11060-7003	2	Gasket-Insulator
⑤11060B	11060-7004	1	Gasket-Air Filter
⑤11060C	11060-7005	2	Gasket
⑤11065	11065-2061	1	Cap
⑤15003C	15003-7037	1	Carburetor ASM
⑤16014	16014-2080	1	Screw-Pilot Air
⑤16020	16020-2141	1	Chamber-Float
⑤16021	16021-2060	1	Screw-Throttlestop
⑤16025B	16025-2195	1	Valve-Throttle #135
⑤16030	16030-2067	1	Valve-Float
⑤16031	16031-2066	1	Float
⑤16035D	16035-2077	1	Jet-Air #0.8
⑤16035F	16035-2081	1	Jet-Air, #1.2
⑤16041	16041-2253	1	Shaft-Carburetor, Choke
⑤16041A	16041-7006	1	Shaft-Carburetor
⑤16073	16073-7001	1	Insulator
⑤16126B	16126-7008	1	Valve
⑤21188	21188-2011	1	Solenoid
⑤26011	26011-2281	1	Wire-Lead
⑤39076	39076-2053	1	Limiter
⑤43058	43058-3716	1	Ring
⑤49121B	49121-2231	1	Nozzle-Main

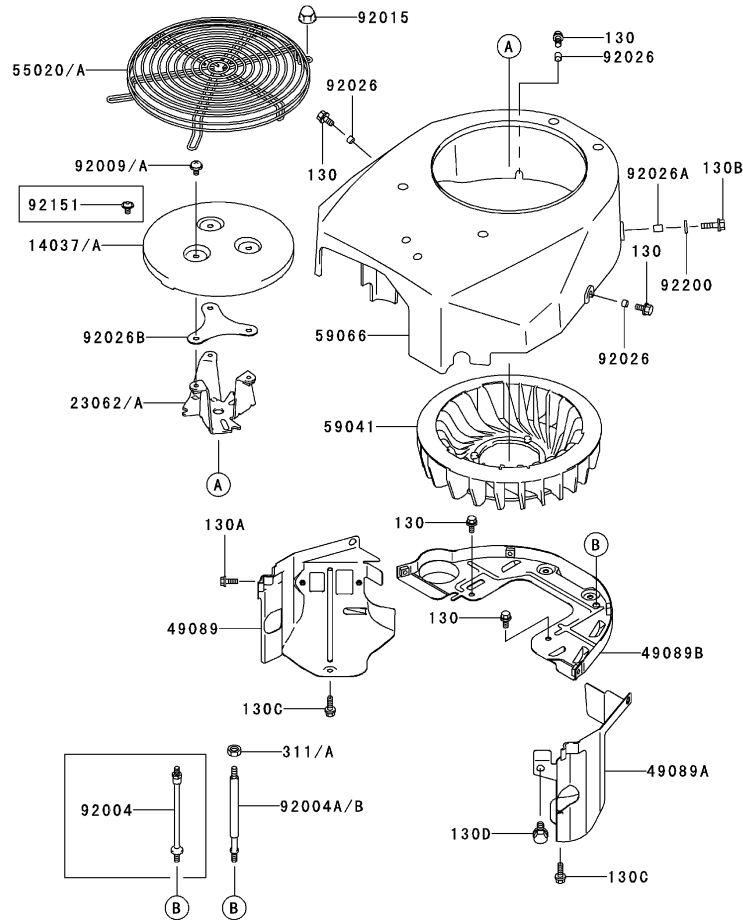
Ref	Part No.	Qty.	Description
⑤59076	59076-7001	1	Manifold-Intake
⑤92009	92009-2015	1	Screw
⑤92009A	92009-2024	2	Screw
⑤92009B	92009-2081	1	Screw
⑤92009C	92009-2400	1	Screw
⑤92022	92022-2231	1	Washer
⑤92022A	92022-2239	1	Washer
⑤92027	92027-2025	1	Ring
⑤92033	92033-2067	1	Ring-Snap
⑤92043	92043-2226	1	Pin
⑤92063B	92063-2380	1	Jet-Main
⑤92064B	92064-2127	1	Jet-Pilot
⑤92081	92081-2009	2	Spring
⑤92081A	92081-2256	2	Spring
⑤92093	92093-2002	1	Seal
⑤92145	92145-2061	1	Spring
⑤92191A	92191-7016	1	Tube
⑤130	130B0635	4	Bolt
⑤172	172G0685	2	Stud
⑤214	214B0510	1	Screw-P
⑤482	482L4000	1	Circlip-Type-E



Control Equipment Assembly Kawasaki FH500V-ES10

Ref	Part No.	Qty.	Description
①11051	11051-7008	1	Bracket
①13107C	13107-7010	1	Shaft
①13271	13271-7018	1	Plate
①16169	16169-7001	1	Link-Choke
①16171	16171-7001	1	Link
①39129	39129-7003	1	Spring-Governor
①39129A	39129-7003	1	Spring-Governor
①49103B	49103-7004	1	Arm-Governor
①49113B	49113-7004	1	Panel-Comp-Control
①92009A	92009-7007	1	Screw, 4x30
①92145	92145-7003	1	Spring
①92145A	92145-7004	1	Spring
①92145B	92145-7005	1	Spring
①92150	92150-2182	2	Bolt
①92153	92153-7005	1	Bolt
①92170	92170-7001	2	Clamp
①130	130B0612	2	Bolt-Flanged
①214	214B0408	2	Screw-Pan
①311	311B0600	1	Nut
①411	411b0600	1	Washer

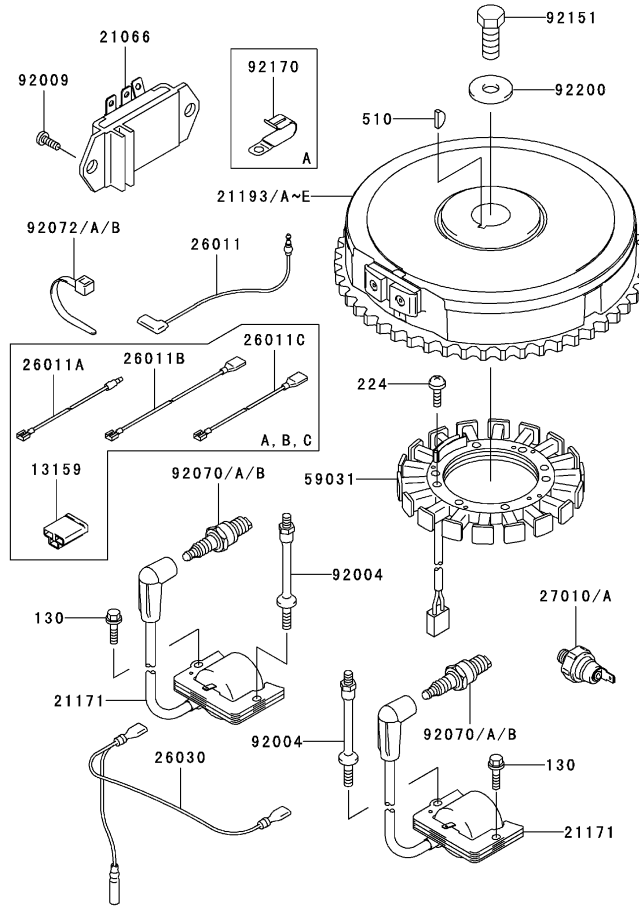
--	--	--	--



Cooling Equipment Assembly Kawasaki FH500V-ES10

Ref	Part No.	Qty.	Description
⑤13270	13270-7007	1	Plate
⑤14037	14037-7003-9H	1	Screen
⑤23062	23062-7008	1	Bracket-Comp
⑤49089	49089-7001	1	Shroud-Engine
⑤49089A	49089-7002	1	Shroud-Engine
⑤49089B	49089-7003	1	Shroud-Engine
⑤55020	55020-7004	1	Guard
⑤59041	59041-7001	1	Fan
⑤59066	59066-7002	1	Housing-Fan
⑤92004	92004-7006	2	Stud
⑤92009	92009-7008	3	Screw
⑤92015	92015-1170	4	Nut
⑤92026	92026-7001	3	Spacer
⑤92026A	92026-7003	1	Spacer
⑤92026B	92026-7007	1	Spacer
⑤92200	92200-2078	1	Washer
⑤130	130B0612	5	Bolt-Flanged
⑤130A	130B0616	2	Bolt-Flanged
⑤130B	130B0620	1	Bolt-Flanged
⑤130C	130B0625	2	Bolt-Flanged
⑤130D	130B0816	1	Bolt-Flanged
⑤311	311B0600	2	Nut

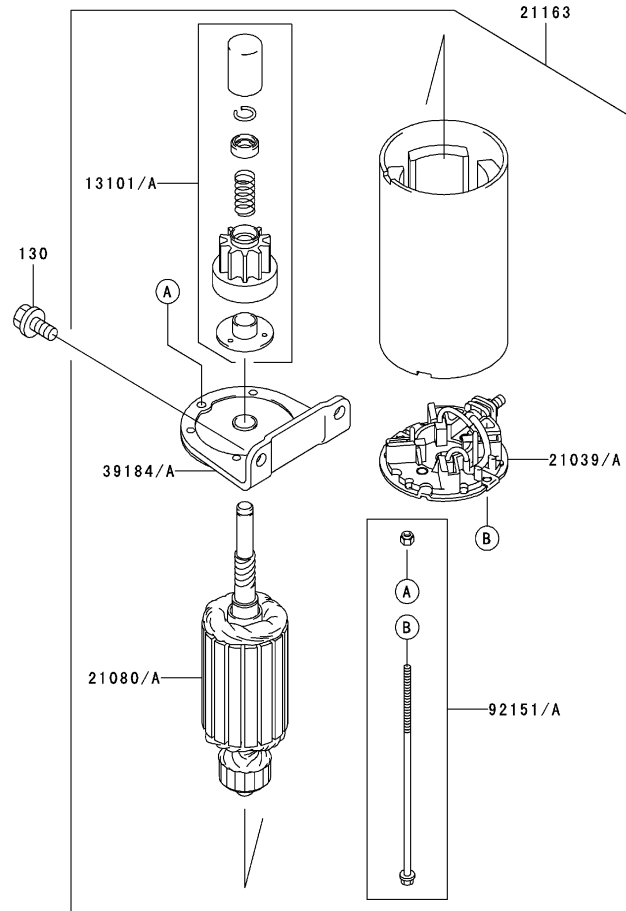
--	--	--	--



Electric Equipment Assembly Kawasaki FH500V-ES10

Ref	Part No.	Qty.	Description
②21066	21066-7001	1	Regulator-Voltage
②21171	21171-7001	2	Ignition Coil ASM
②21193C	21193-7007	1	Flywheel ASM
②26011	26011-7001	1	Wire-Lead
②26030	26030-7001	1	Harness
②59031	59031-7001	1	Coil-Charging
②92004	92004-2147	2	Stud
②92009	92009-2308	2	Screw
②92070A	92070-7003	2	Plug-Spark (Rcj8y)
②92072A	92072-7003	2	Band
②92151	92151-2097	1	Bolt
②92200	92220-7002	1	Washer
②130	130B0620	1	Bolt-Flanged
②224	224B0520	4	Screw-Pan-Wp-Cros
②510	510A5100	1	Key

--	--	--	--



Starter Assembly Kawasaki FH500V-ES10

Ref	Part No.	Qty.	Description				
①13101	13101-7001	1	Gear ASM				
①21039	21039-7001	1	Brush				
①21080	21080-7001	1	Armature				
①21163	21163-7001	1	Starter-Electric				
①39184	39184-7001	1	Bracket ASM				
①92151	92151-7013	1	Bolt				
①130	130B0816	2	Bolt-Flanged				

NOTES

