



Z149 Z Master[®] With 52in SFS Side Discharge Mower

Model No. 74163 - 240000001 and up.

Parts Catalog

Ordering Replacement Parts

To order replacement parts, please supply: the part number, the quantity, and the description of each part desired.

Understanding Reference Numbers

Each identified part in an illustration has a reference number. The reference number for a part also appears in the parts list, along with other information about the part.

This catalog uses two special reference number formats, one to indicate parts in a service assembly and another to indicate the quantity of a given part in an illustration.

Service Assembly Reference Numbers

Parts in service assemblies have reference numbers in the form **a:b**. The **a** represents the reference number of the entire service assembly and the **b** represents a sequential number unique to each part within the service assembly.

For example, a wheel assembly might be identified by reference number 6, the tire by **6:1**, the valve by **6:2**, and the wheel by **6:3**. When you order the assembly identified by reference number 6, you receive all parts identified by reference numbers 6:1, 6:2, and 6:3. However, you may also order any part individually. Reference numbers of this type appear in illustrations and in part lists.

Reference Numbers Indicating Quantity

In an illustration, if a reference number indicates more than one part, the reference number has the form **nX y**. The **n** represents the quantity of the part, the **X** is the multiplication symbol, and the **y** represents the reference number.

For example, in an illustration, the reference number **2X 37** means that two of the parts identified by reference number 37 are indicated.

Part Description Abbreviations

Part descriptions in this catalog may include the following abbreviations.

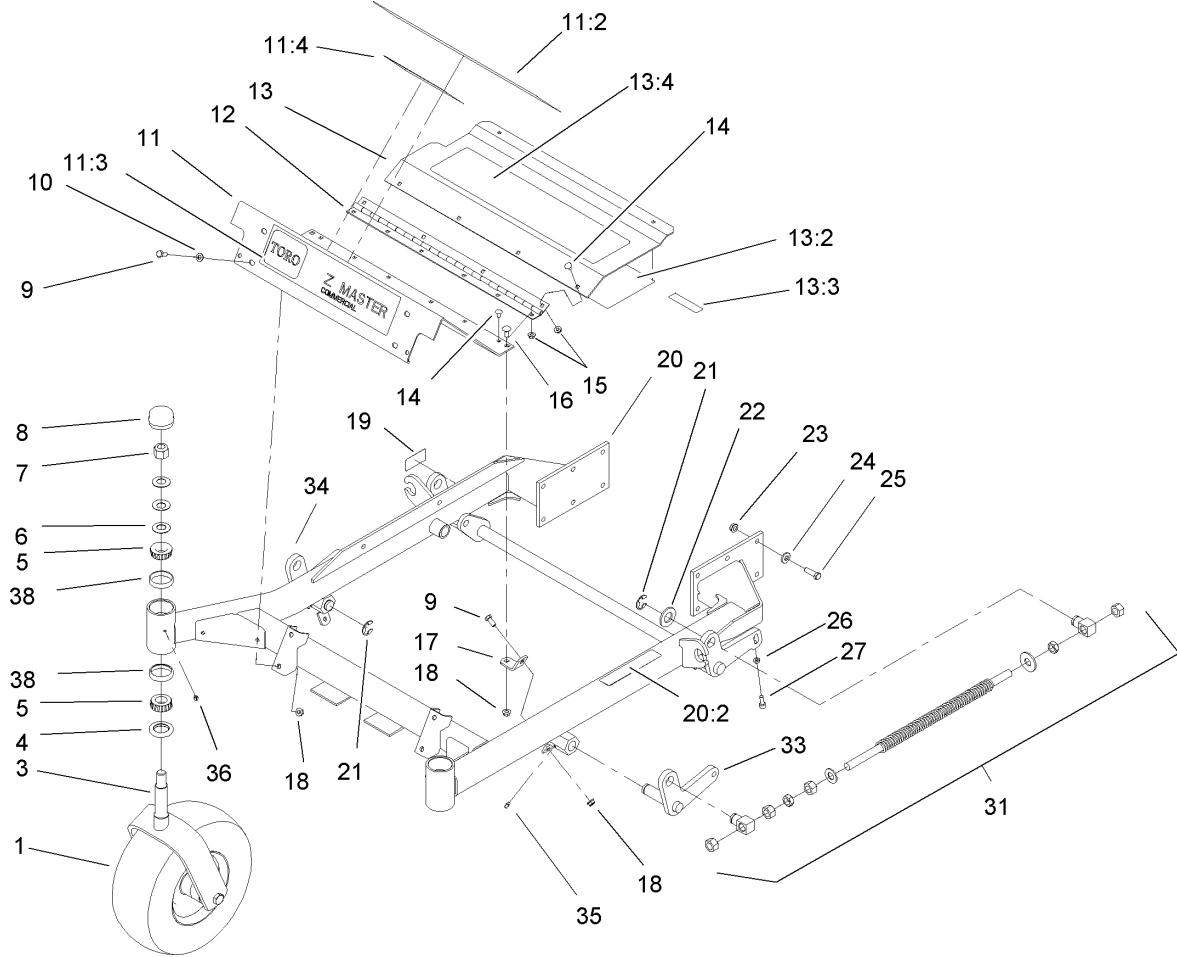
AR.	as required	HYD.	hydraulic
ASM.	assembly	INC.	incorporated
CARR.	carriage	LH.	left hand
DEG.	degrees	NI.	nylon insert
FH.	flat head	PPH.	phillips pan head
GA.	gauge	PTH.	phillips truss head
HF.	hex flange	PTO.	power take off
HH.	hex head	RH.	right hand
HHF.	hex head flange	SFH.	slotted fillister head
HHFTF.	hex head flange thread forming	SHH.	slotted hex head
HJ.	hex jam	SHWH.	slotted hex washer head
HLH.	hex lag head	SPH.	slotted pan head
HOC.	height-of-cut	SQH.	square head
HS.	hex	SRH.	slotted round head
HSBH.	hex socket button head	STD.	standard
HSFH.	hex socket flat head	TAP.	self tapping
HS.	hex socket head	TTH.	torx truss head
HWH.	hex washer head	WH.	wing head
HWHTF.	hex washer head thread forming		

Footnotes

- ❶ Not illustrated
- ❷ Not serviced separately

Contents

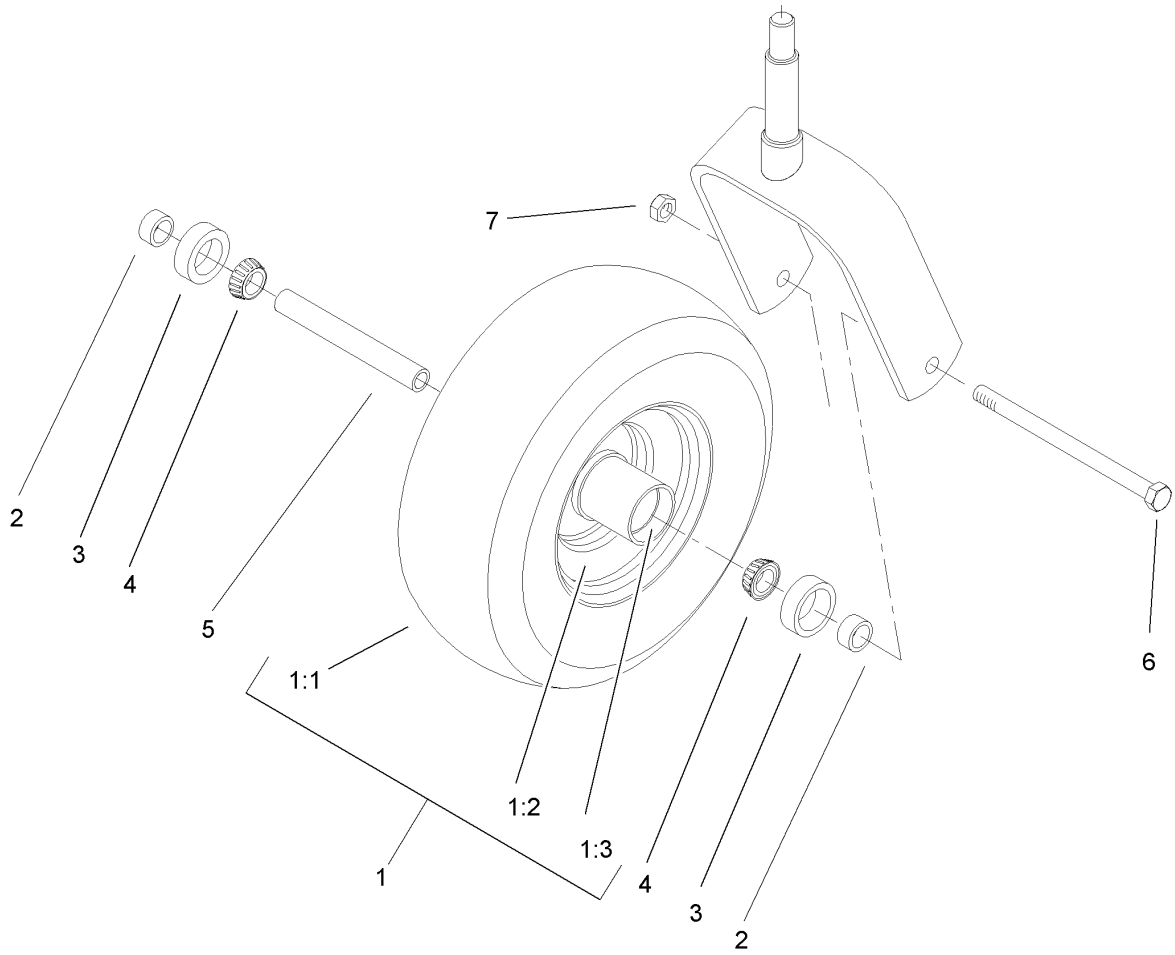
Description	Page	Description	Page
Front Frame Assembly	3	Piston/Crankshaft Assembly Kawasaki FH601V-DS06	25
Caster Wheel Assembly No. 1-634662	4	Valve/Camshaft Assembly Kawasaki FH601V-DS06	26
Front Spring Assembly No. 103-1987	5	Lubrication Equipment Assembly Kawasaki FH601V-DS06	27
Height of Cut Assembly	6	Cooling Equipment Assembly Kawasaki FH601V-DS06	28
Main Frame Assembly	7	Electric Equipment Assembly Kawasaki FH601V-DS06	29
Fuel System Assembly	8	Control Equipment Assembly Kawasaki FH601V-DS06	30
Parking Brake System Assembly	9	Carburetor Assembly Kawasaki FH601V-DS06	31
Steering Control Assembly	10	Air-Filter Assembly Kawasaki FH601V-DS06	32
Hydraulic System Assembly	11	Fuel Tank/Fuel Valve Assembly Kawasaki FH601V-DS06	33
Hydraulic Pump Assembly No. 103-1942	13	Starter/Decal Kawasaki FH601V-DS06	34
Pump Idler and Belt Assembly	14		
Engine and Clutch Assembly	15		
Deck and Wheel Gage Assembly	16		
Deck Decal and Deflector Assembly No. 106-5876	17		
Deck Spindle Assembly	18		
Idler Pulley, Lift Strut and Chain Assembly	19		
Electrical System Assembly	20		
Seat and Roll-Over-Protection-System Assembly	21		
Seat Assembly No. 107-1867	22		
Roll-Over Protection System Assembly No. 107-3066	23		
Cylinder/Crankcase Assembly Kawasaki FH601V-DS06	24		



Front Frame Assembly

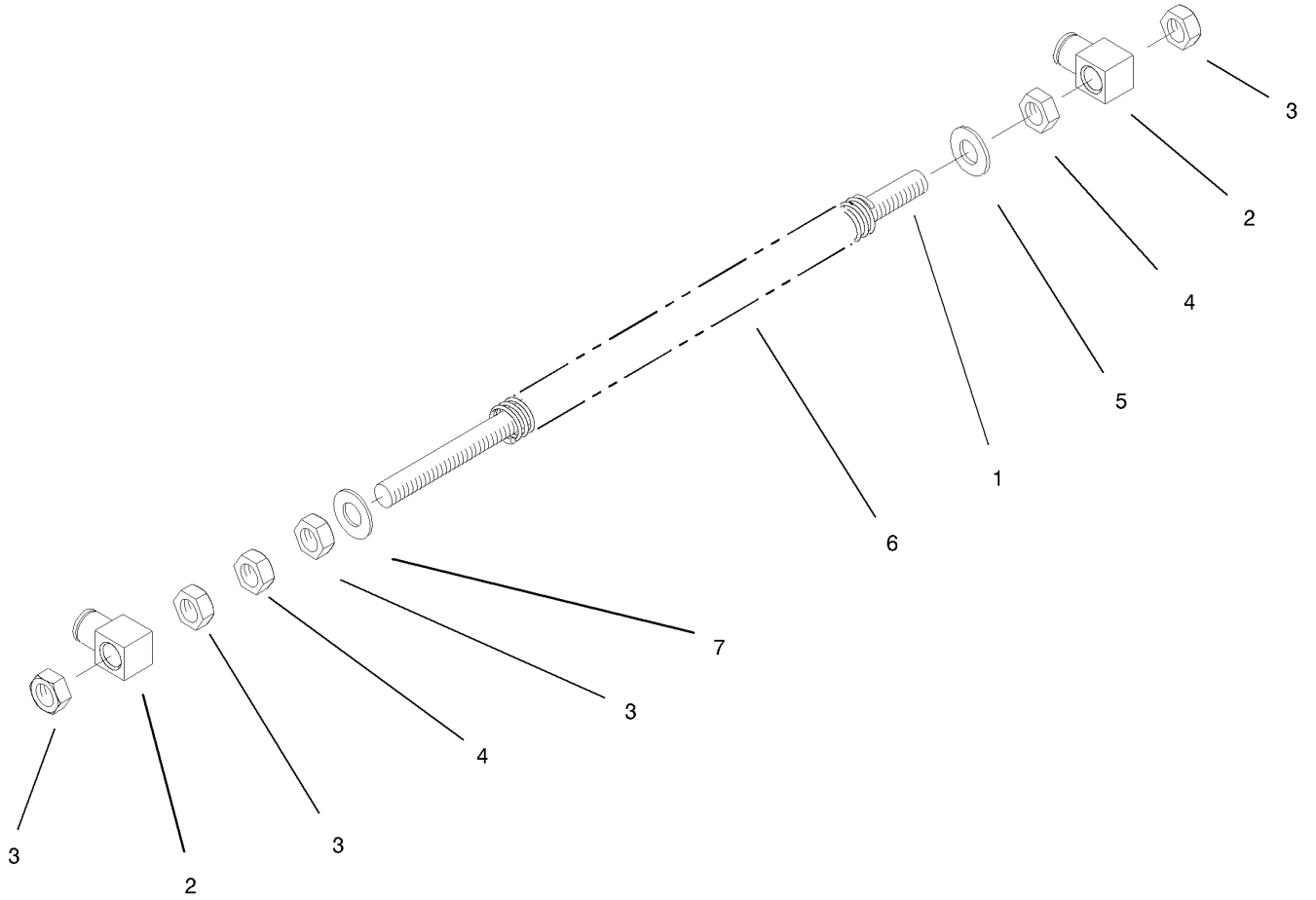
Ref	Part No.	Qty.	Description
1	1-634662	2	Caster Wheel ASM
3	1-632511-01	2	Caster
4	1-543511	2	Seal-Grease
5	254-94	4	Bearing-Cone, Taper
6	1-633508	6	Washer-Bellville
7	3296-51	2	Nut-Lock, NI
8	1-543513	2	Cap-Grease
9	322-3	6	Screw-HH
10	3256-23	4	Washer-Flat
11	107-2107	1	Floorpan ASM
11:2	1-633553	1	Pad-Antiskid
11:3	106-7451	1	Decal
11:4	107-2112	1	Decal-Warning
12	1-653049	1	Hinge-Floorpan
13	99-3930	1	Footrest ASM
13:2	99-3924	1	Decal-Service
13:3	98-5954	1	Decal-Missing, Cover
13:4	1-633553	1	Pad-Antiskid
14	3229-10	10	Screw-CARR
15	32128-33	10	Nut-HF
16	3230-1	2	Bolt-CARR
17	99-3870-01	2	Bracket-Floorpan
18	32128-20	8	Nut-HF
19	105-2625	1	Decal-Std, Safety

Ref	Part No.	Qty.	Description
20	107-1783	1	Front Frame ASM
20:2	1-633818	1	Decal-Warning
21	32151-103	6	Ring-Snap
22	3256-29	6	Washer-Flat
23	3290-357	12	Nut-HHF
24	98-5975	12	Washer-Bellville
25	323-7	12	Screw-HH
26	3218-2	2	Nut-Jam
27	3274-18	2	Screw-HSH
31	103-1987	2	Front Spring ASM
33	107-1791-01	1	LH Front Deck Lift ASM
34	107-1792-01	1	RH Front Deck Lift ASM
35	302-19	4	Fitting-Grease
36	1-811010	2	Plug
38	254-72	4	Bearing-Cup, Tapered



Caster Wheel Assembly No. 1-634662

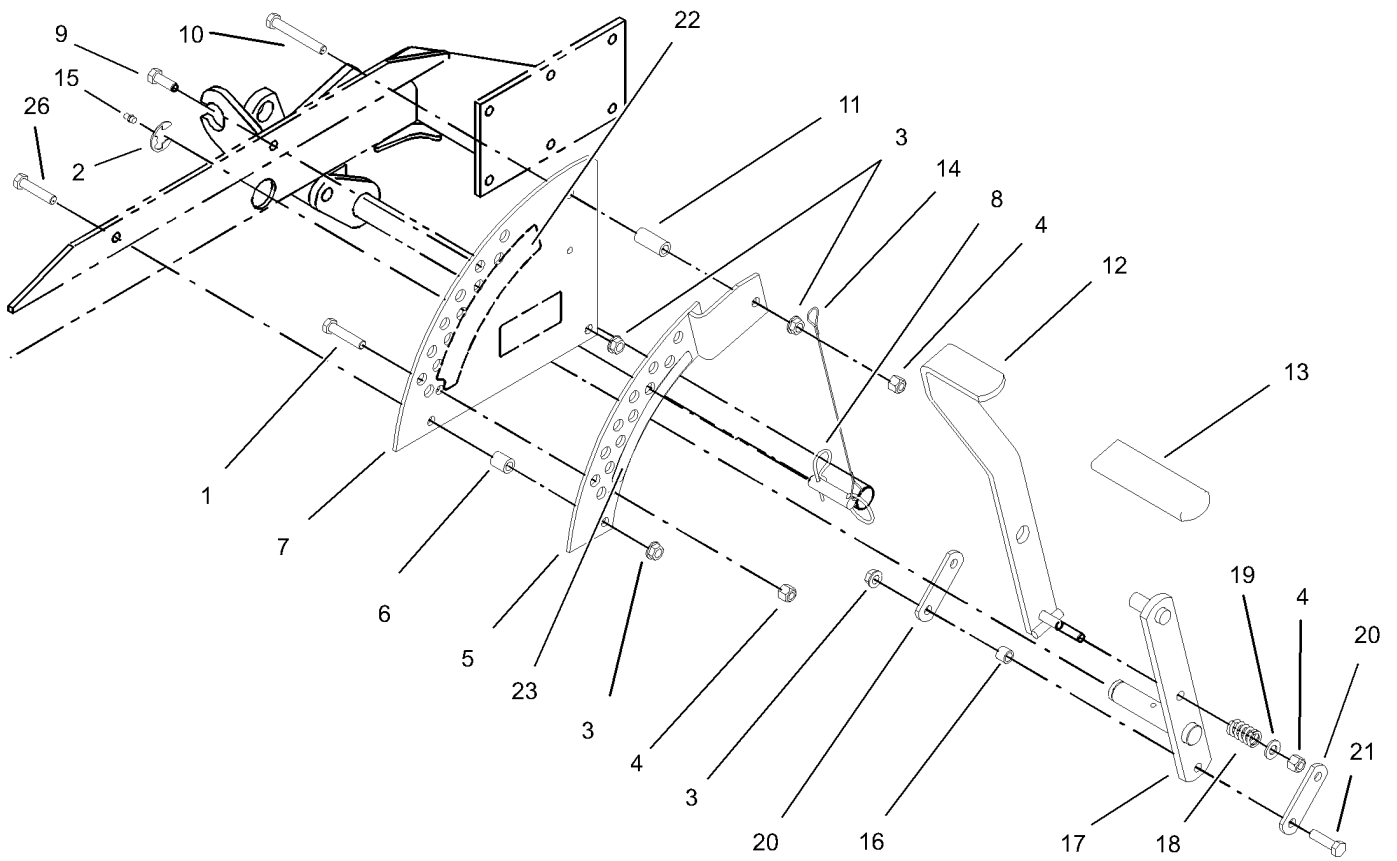
Ref	Part No.	Qty.	Description	
1	1-633582	1	Wheel And Tire ASM	
1:1	1-633002	1	Tire	
1:2	1-633583	1	Wheel	
1:3	1-633584	2	Bearing-Cup	
2	1-633581	2	Spacer-Bearing	
3	1-633580	2	Seal-Bearing	
4	1-633585	2	Bearing-Cone, Taper	
5	1-633579	1	Spacer-Caster, Front	
6	325-36	1	Screw-HH	
7	3296-45	1	Nut-Lock, NI	



Front Spring Assembly No. 103-1987

Ref	Part No.	Qty.	Description
1	1-653011	1	Rod-Lift, Deck
2	1-633441	2	Swivel-Deck Mount, Rear
3	3217-11	4	Nut-Hex
4	3218-6	2	Nut-Jam
5	1-805517	1	Washer
6	1-653009	1	Spring-Compression
7	3256-27	1	Washer-Flat

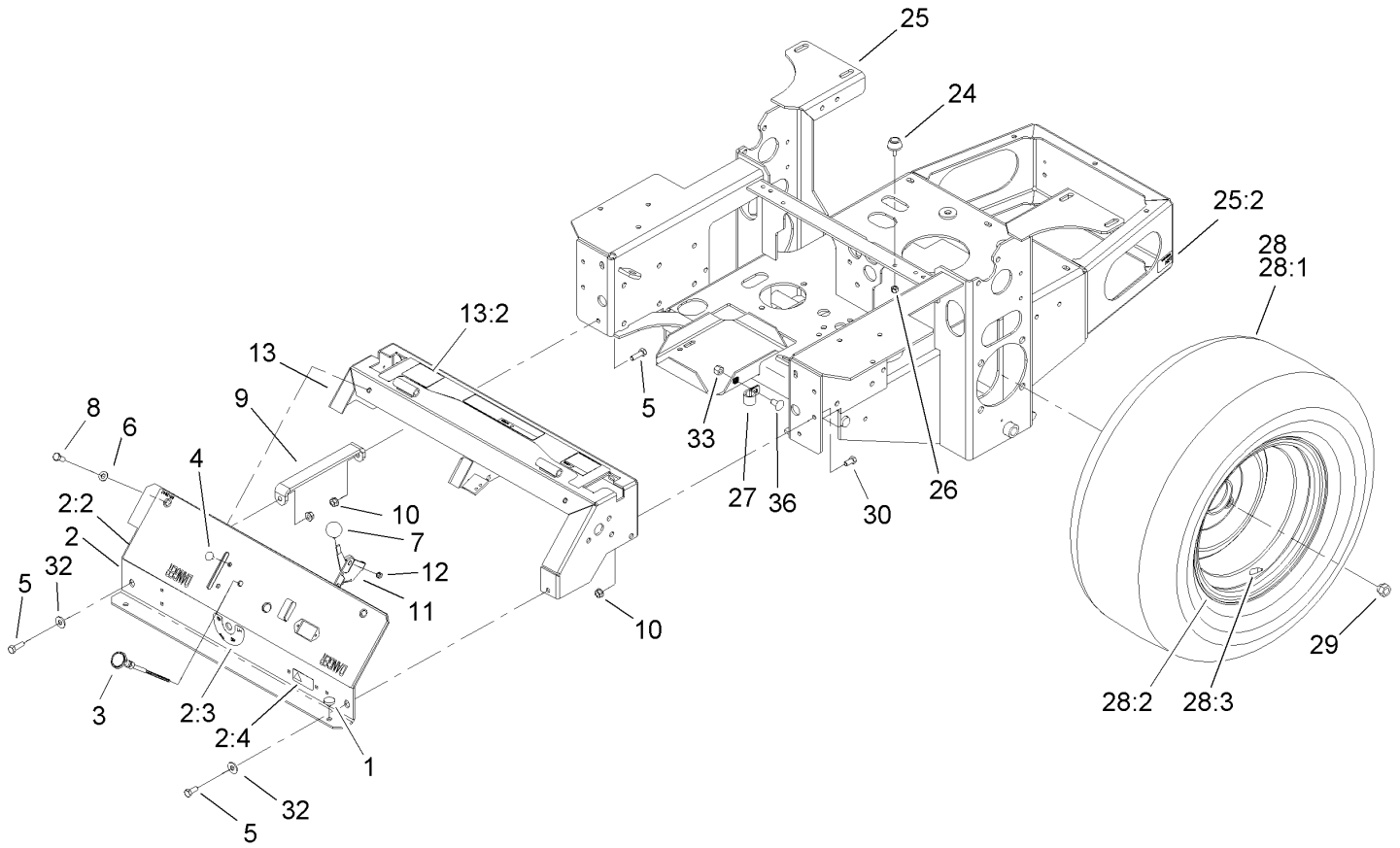
--	--	--	--



Height of Cut Assembly

Ref	Part No.	Qty.	Description
1	323-9	1	Screw-HH
2	32151-103	1	Ring-Snap
3	3290-357	5	Nut-HHF
4	3296-39	3	Nut-Lock, NI
5	1-652235-01	1	Plate-Lift, Deck
6	1-633080	1	Bushing-Lever, Lift
7	1-653230-01	1	Plate-Lift, Deck
8	1-806005	1	Pin-Hair
9	323-6	1	Screw-HH
10	323-13	1	Screw-HH
11	1-633082	1	Bushing-Lever, Lift
12	103-2078-03	1	Handle-Lift
13	1-633295	1	Grip-Lever, Lift
14	1-633097	1	Pin-Hitch (W/lanyard)
15	302-19	1	Fitting-Grease
16	103-1918	2	Bushing
17	106-6598-03	1	Lift Arm ASM
18	1-633325	1	Spring-Compression
19	3256-24	1	Washer-Flat
20	1-633068	2	Arm-Lift, Deck
21	323-29	2	Screw-HH
22	1-653140	1	Decal-Deck Height, Outer
23	1-653147	1	Decal-Deck Height, Inner
26	323-8	1	Screw-HH

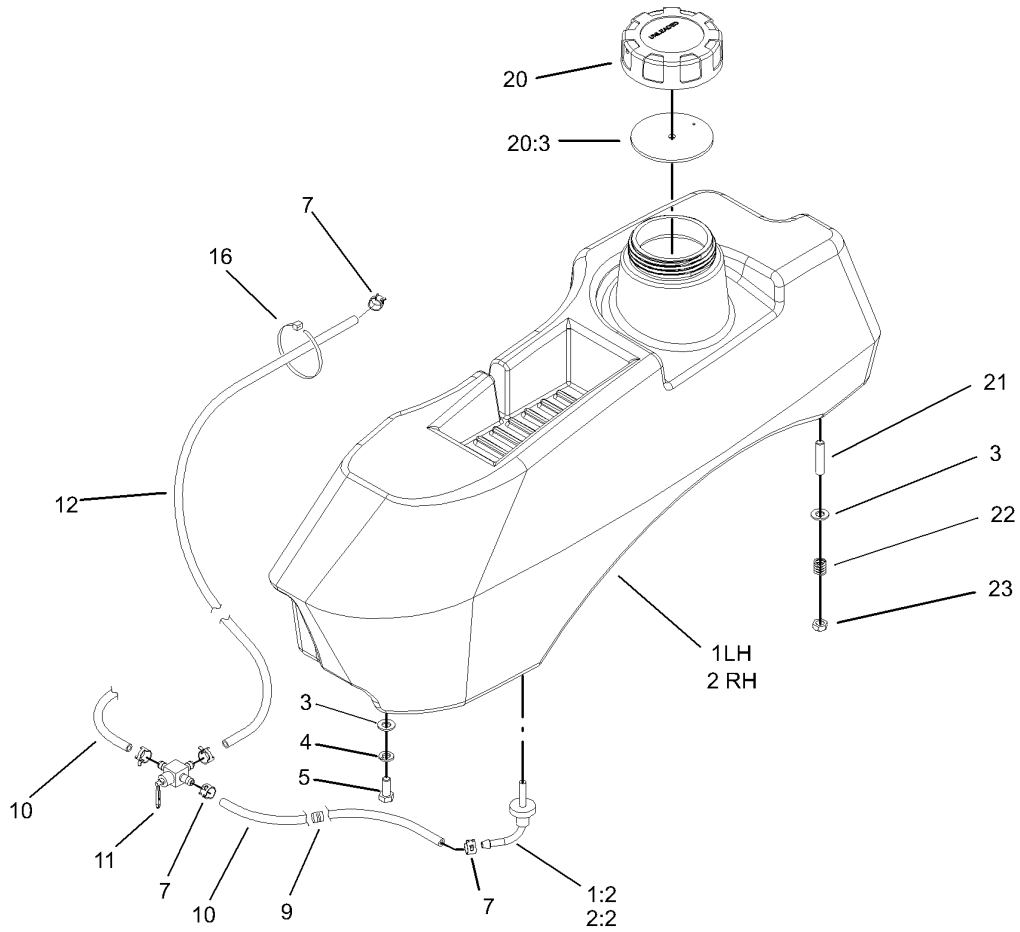
--	--	--	--



Main Frame Assembly

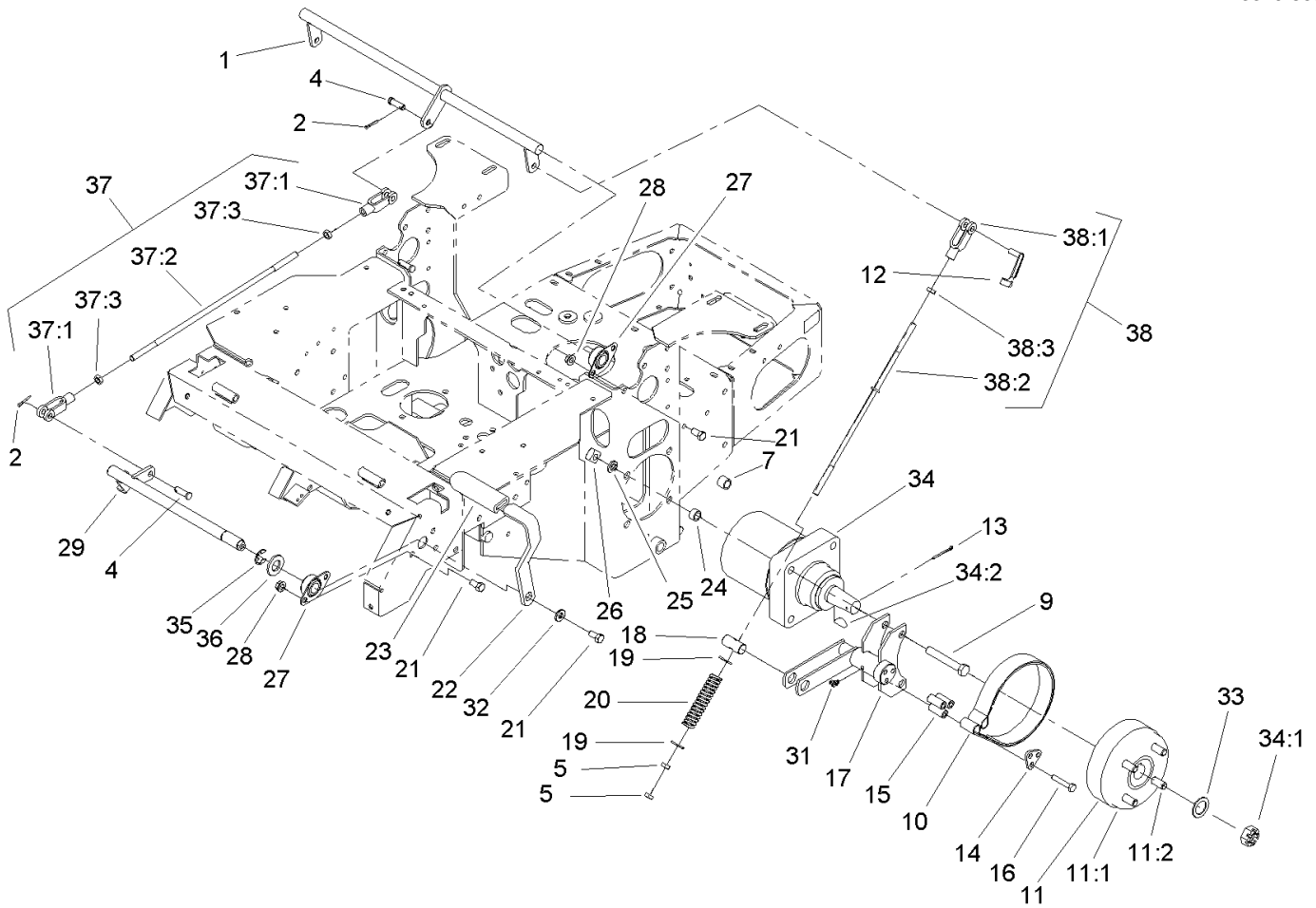
Ref	Part No.	Qty.	Description
1	1-513658	2	Bumper
2	106-6589	1	Console ASM
2:2	106-6586	1	Decal-Panel, Control
2:3	103-0262	1	Decal-Valve, Fuel
2:4	98-4387	1	Decal-Protection, Ear
3	1-603336	1	Control-Choke
4	1-807513	2	Bolt-CARR
5	322-5	2	Screw-HH
6	3256-23	2	Washer-Flat
7	1-513592	1	Knob-Ball
8	322-3	3	Screw-HH
9	1-653089-03	1	Bracket
10	32128-20	12	Nut-HF
11	1-633696	1	Cable-Throttle
12	3296-2	2	Nut-Lock
13	105-6123	1	Console Frame ASM
13:2	103-1997	1	Decal-Console, Top
24	1-523420	2	Bumper
25	107-2117	1	Main Frame ASM
25:2	65-2690	2	Decal-Surface, Hot
26	3296-42	2	Nut-Lock, NI
27	1-633396	1	Clip-Loom
28	1-653159	2	Wheel And Tire ASM
28:1	1-653160	1	Tire

Ref	Part No.	Qty.	Description
28:2	1-653161	1	Wheel
28:3	232-27	1	Stem-Valve
29	242-50	8	Nut-Lug
30	322-2	6	Screw-HH
32	3256-3	2	Washer-Flat
33	3296-39	1	Nut-Lock, NI
36	3231-21	1	Screw-CARR



Fuel System Assembly

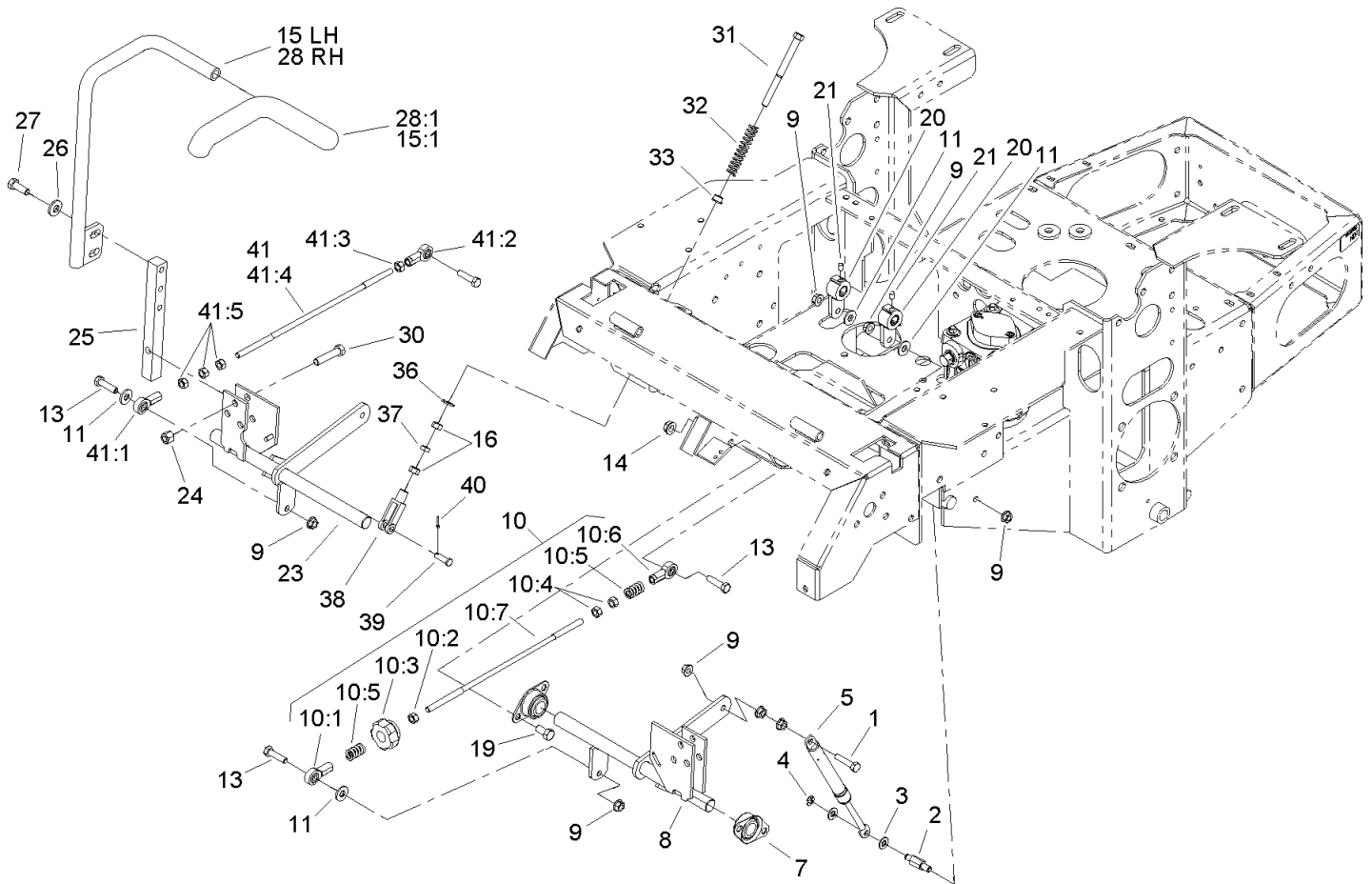
Ref	Part No.	Qty.	Description
1	106-9976	1	LH Fuel Tank ASM
1:2	103-2605	1	Fitting-Fuel, Bulkhead
2	106-9975	1	RH Fuel Tank ASM
2:2	103-2605	1	Fitting-Fuel, Bulkhead
3	3256-23	8	Washer-Flat
4	1-805005	4	Washer-Lock
5	322-3	4	Screw-HH
7	1-303077	6	Clamp
9	1-543296	2	Grommet
10	1-543526	2	Hose-Fuel
11	1-633347	1	Valve-Fuel
12	103-0216	1	Hose-Fuel
16	1-303335	1	Tie-Plastic
20	88-3980	2	Gas Cap ASM
20:3	88-4010	1	Gasket-Cap, Gas
21	1-633023	4	Stud
22	1-633349	4	Spring-Tank, Fuel
23	3296-47	4	Nut-Lock, NI



Parking Brake System Assembly

Ref	Part No.	Qty.	Description
1	1-652073-03	1	Crank-Brake, Park
2	3272-10	2	Pin-Cotter
4	1-808285	2	Pin-Clevis
5	3219-3	4	Nut-HH
7	1-653068	4	Spacer-Wheel
9	325-13	8	Screw-HH
10	103-0355	2	Band-Brake
11	103-0590	2	Hub-Wheel ASM
11:1	103-0589	1	Wheel Hub ASM
11:2	1-633926	4	Stud-Wheel
12	103-2399	2	Pin-Spring, Clevis
13	1-806800	2	Pin-Cotter
14	103-0374	2	Retainer-Band, Brake
15	103-0384	6	Spacer
16	322-9	6	Screw-HH
17	103-0352-03	2	Bracket-Brake
18	1-633144	2	Pin-Trunion
19	3256-4	4	Washer-Flat
20	1-633454	2	Spring-Brake
21	323-4	9	Screw-HH
22	1-653074-03	1	Handle-Brake, Park
23	1-633268	1	Grip-Lever, Brake
24	1-653069	4	Spacer-Wheel
25	3253-7	8	Washer-Lock

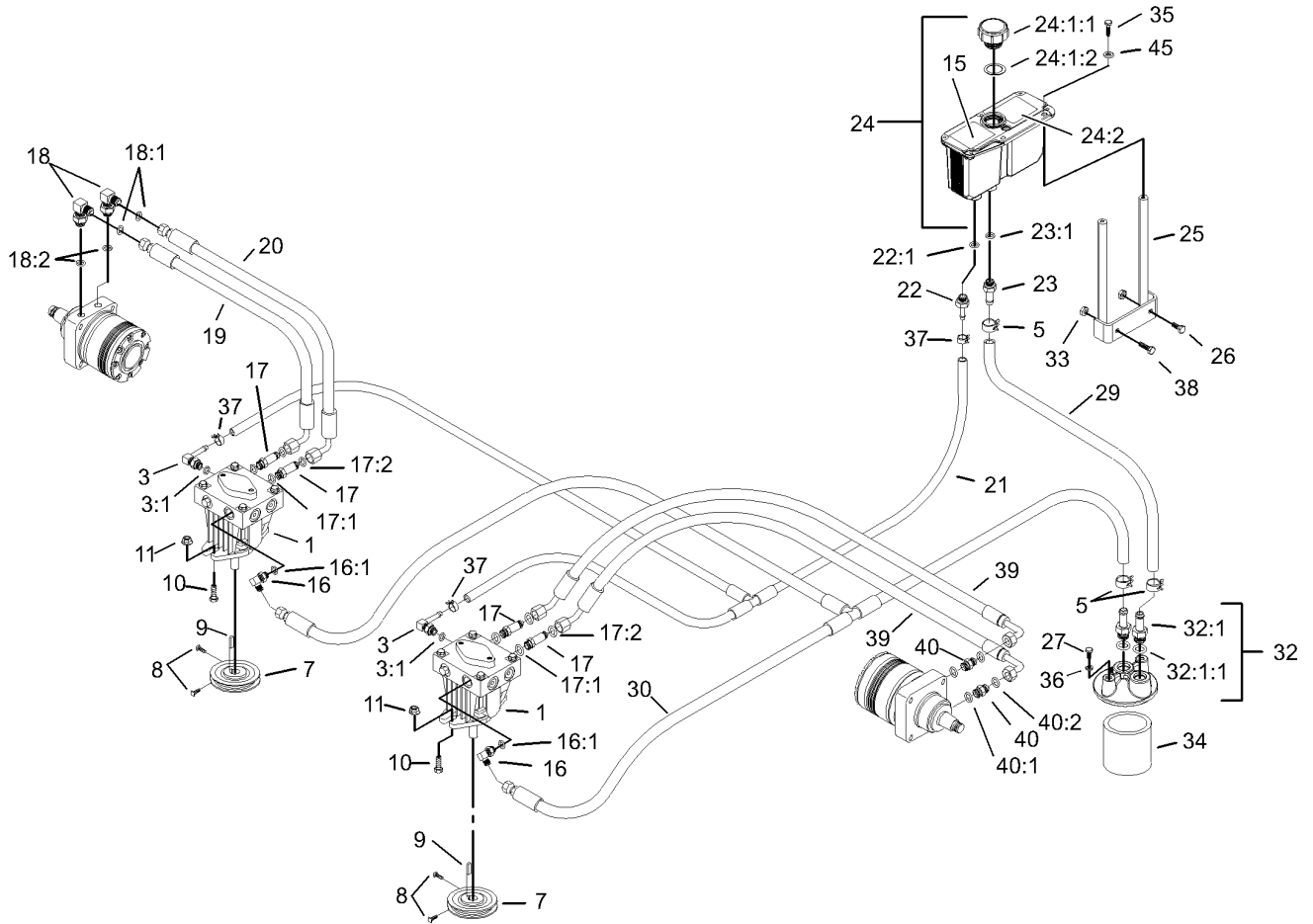
Ref	Part No.	Qty.	Description
26	103-0131	8	Nut-Square
27	1-633102	4	Bearing-Flange, Side
28	3290-357	8	Nut-HHF
29	103-3116	1	Shaft-Brake, Parking
31	1481	2	Fitting-Grease
32	98-5975	1	Washer-Belleville
33	1-523157	2	Washer-Spacer
34	1-523328	2	Motor-Wheel
34:1	1-809036	1	Nut-HH
34:2	3257-42	1	Key-Woodruff
①34:99	1-000139	1	Bearing Kit
①34:99	103-2748	1	Drive Link Kit
①34:99	1-000099	1	Seal Kit
35	32151-48	1	E-Ring
36	3256-28	1	Washer-Flat
37	103-4328	1	Brake Rod ASM
37:1	1-633131	2	Yoke-Linkage, Brake
37:2	1-653061	1	Linkage-Handle, Brake
37:3	3219-3	2	Nut-HH
38	103-4329	2	Brake Rod ASM
38:1	1-633131	1	Yoke-Linkage, Brake
38:2	103-0356	1	Rod-Brake
38:3	3219-3	1	Nut-HH



Steering Control Assembly

Ref	Part No.	Qty.	Description
1	1-403180	2	Screw-HH
2	103-4101	2	Pin-Damper
3	3256-23	4	Washer-Flat
4	32120-35	2	E-Ring
5	103-4079	2	Damper-Control, Motion
7	1-633102	4	Bearing-Flange, Side
8	103-4774	1	Control-Motion, LH
9	32128-20	12	Nut-HF
10	103-4326	1	Tracking Rod ASM
10:1	1-543017	1	Balljoint-RH
10:2	3219-2	1	Nut-Hex
10:3	103-3060	1	Knob-Tracking
10:4	1-804524	2	Nut
10:5	1-323245	2	Spring-Compression
10:6	1-633152	1	Balljoint-Thread, LH
10:7	103-3066	1	Link-Rod, Tracking
11	3256-3	4	Washer-Flat
13	322-6	4	Screw-HH
14	3290-357	8	Nut-HHF
15	103-0631	1	LH Lever ASM
15:1	1-633257	1	Grip-Control, Motion
16	3219-2	4	Nut-Hex
19	323-4	8	Screw-HH
20	103-3717	2	Arm-Control

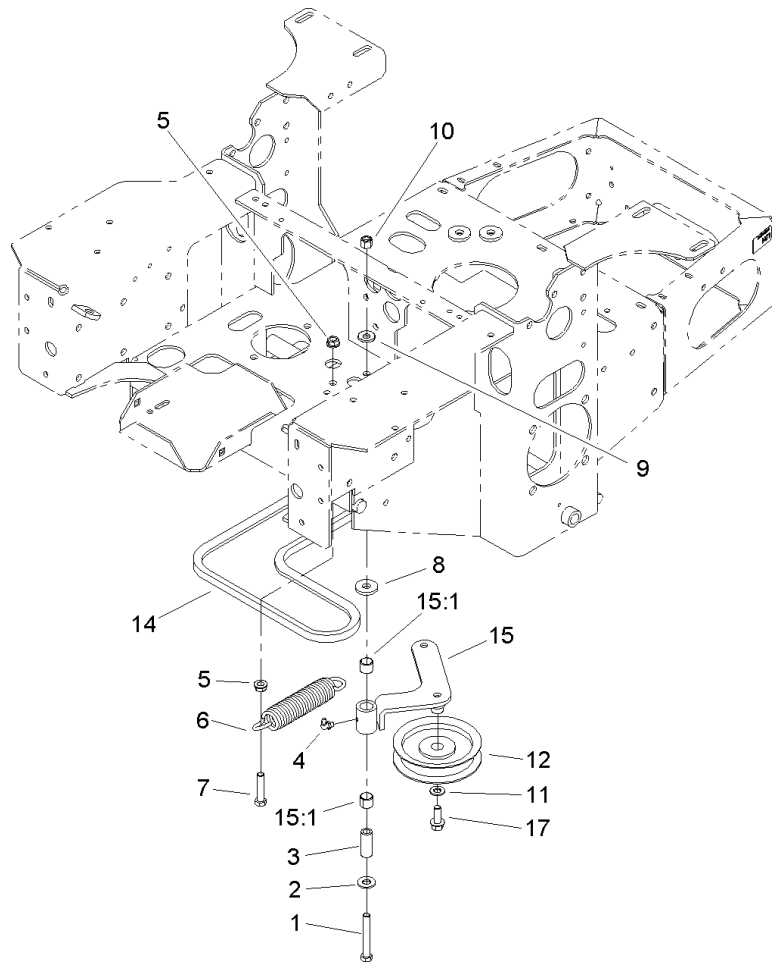
Ref	Part No.	Qty.	Description
21	1-803022	2	Screw-Set
23	103-4773	1	Control-Motion, RH
24	3296-39	6	Nut-Lock, NI
25	103-0407	2	Arm-Shaft, Control
26	98-5975	4	Washer-Belleville
27	323-6	4	Screw-HH
28	103-0632	1	RH Lever ASM
28:1	1-633257	1	Grip-Control, Motion
30	323-9	6	Screw-HH
31	1-603737	2	Bolt-Return, Neutral
32	1-603807	2	Spring-Return, Neutral
33	1-603735	2	Bushing-Flanged
36	3256-2	2	Washer-Flat
37	3220-2	2	Nut
38	1-303105	2	Yoke-Adjustable
39	1-808280	2	Pin-Clevis
40	3272-5	2	Pin-Cotter
41	103-4327	1	Tracking ASM
41:1	1-543017	1	Balljoint-RH
41:2	1-633152	1	Balljoint-Thread, LH
41:3	1-804524	1	Nut
41:4	103-3066	1	Link-Rod, Tracking
41:5	3219-2	3	Nut-Hex



Hydraulic System Assembly

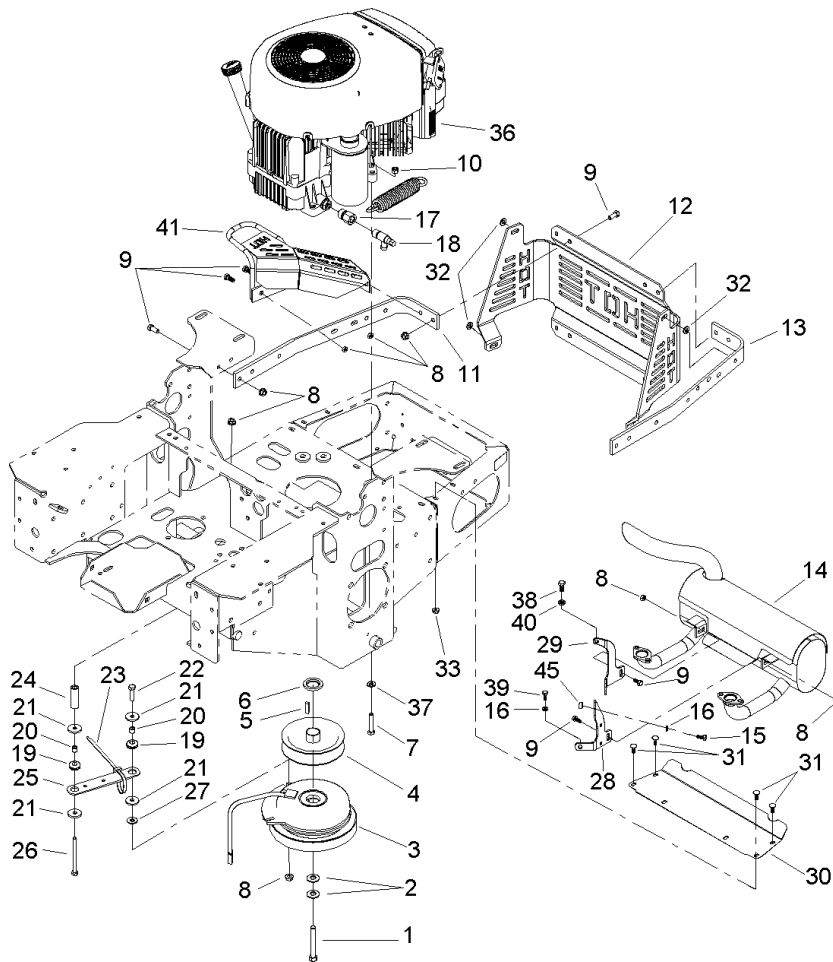
Ref	Part No.	Qty.	Description
1	103-1942	2	Pump-HYD
3	103-1799	2	Elbow-90 DEG
3:1	237-42	1	O-Ring
5	103-1988	3	Clamp-Hose
7	1-653156	2	Pulley
8	1-803050	4	Screw-Set
9	1-807272	2	Key
10	323-7	4	Screw-HH
11	3290-357	4	Nut-HHF
15	103-2644	1	Decal-Exhaust
16	103-1802	2	Fitting-Hyd, 90 DEG
16:1	237-42	1	O-Ring
17	103-1940	4	Adapter-Hyd, Straight
17:1	237-79	1	O-Ring
17:2	1-603992	1	O-Ring
18	1-633605	2	Fitting-Hyd, 90 DEG
18:1	1-603992	1	O-Ring
18:2	237-80	1	O-Ring
19	1-653186	1	Hose-Front
20	1-653187	1	Hose-Rh, Rear
21	103-2357	1	HYD Hose ASM
22	103-1801	1	Adapter-Straight
22:1	237-42	1	O-Ring
23	103-1912	1	Adapter-Straight

Ref	Part No.	Qty.	Description
23:1	237-42	1	O-Ring
24	103-1947	1	HYD Reservoir ASM
24:1		1	Reservoir-HYD
24:1:1	103-1948	1	Cap-Reservoir, HYD
24:1:2	103-1949	1	Gasket-Cap
24:2	1-523552	1	Decal-Tank, HYD
25	103-3071-03	1	Stand-Reservoir
26	322-3	1	Screw-HH
27	321-3	2	Screw-HH
29	103-3077	1	HYD Hose ASM
30	103-2930	1	HYD Hose ASM
32	103-2889	1	Filter Head ASM
32:1	103-1912	2	Adapter-Straight
32:1:1	237-42	1	O-Ring
33	32128-20	2	Nut-HF
34	1-633750	1	Filter-HYD
34	1-633752	1	Filter-Hyd, Winter
35	321-6	2	Screw-HH
36	1-805004	2	Washer-Lock
37	103-1716	3	Clamp-Hose
38	322-5	1	Screw-HH
39	103-3809	2	Hose-LH
40	1-603991	2	Fitting-Straight
40:1	237-80	1	O-Ring



Pump Idler and Belt Assembly

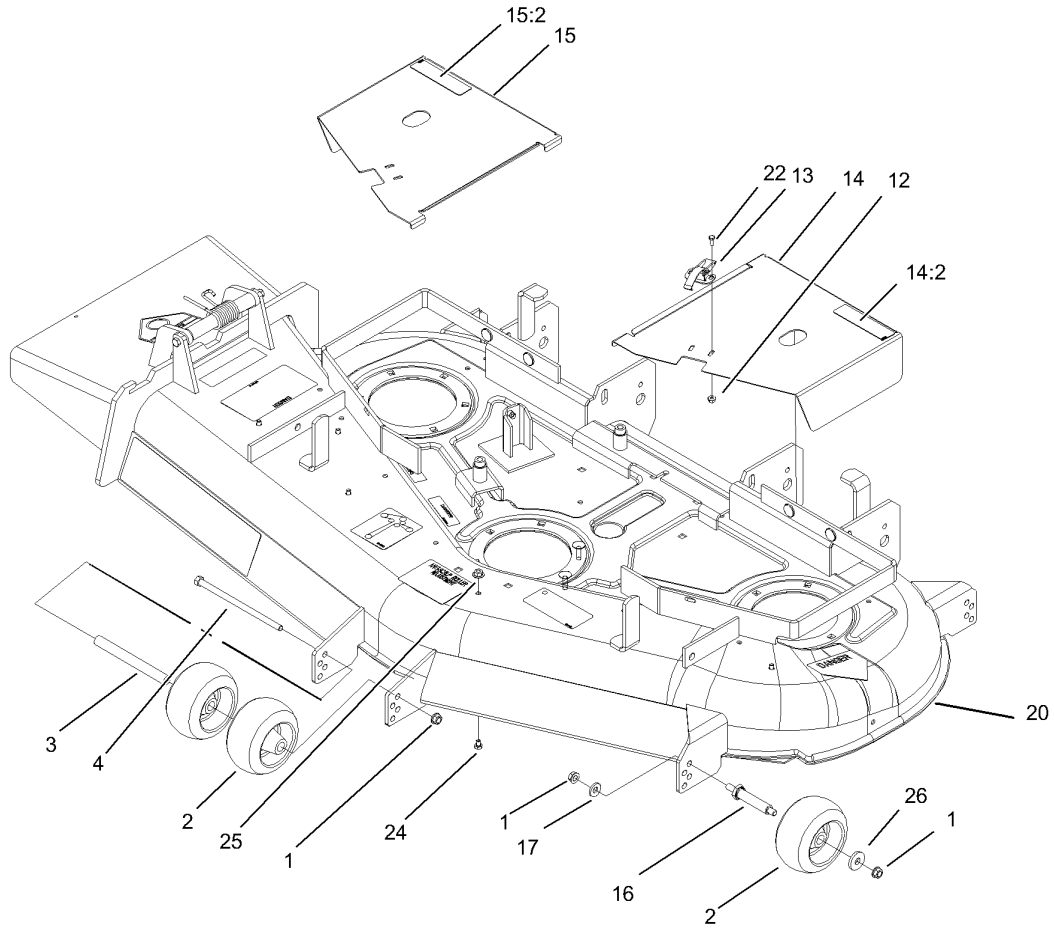
Ref	Part No.	Qty.	Description				
1	323-13	1	Screw-HH				
2	3256-4	1	Washer-Flat				
3	1-603044	1	Bushing				
4	302-40	1	Fitting-Grease				
5	3290-357	2	Nut-HHF				
6	103-4480	1	Spring-Extension				
7	323-9	2	Screw-HH				
8	63-8410	1	Washer				
9	98-5975	1	Washer-Belleville				
10	3296-39	1	Nut-Lock, NI				
11	3256-24	1	Washer-Flat				
12	1-603843	1	Pulley-Idler				
14	103-4761	1	Belt				
15	103-4482	1	Idler Arm ASM				
15:1	103-4681	2	Sleeve-Bearing				
17	3234-11	1	Screw-HHF				



Engine and Clutch Assembly

Ref	Part No.	Qty.	Description
1	3212-12	1	Screw-HH
2	1-603610	2	Washer-Spring
3	103-0690	1	Clutch
4	103-3913	1	Sheave W/ Hub
5	1-807259	1	Key
6	103-2308	1	Spacer-Crankshaft
7	322-9	4	Screw-HH
8	32128-20	29	Nut-HF
9	322-3	23	Screw-HH
10	3296-29	4	Nut-Lock, NI
11	103-3078-03	1	Strap-Guard, RH Engine
12	103-3219-03	1	Guard-Rear
13	103-3164-03	1	Strap-Guard, LH Engine
14	103-2761	1	Muffler
15	33113-025	1	Screw-HH
16	1-805004	3	Washer-Lock
17	103-1966	1	Adapter
18	103-1965	1	Valve-Drain, Oil
19	1-633630	2	Grommet-Brake
20	1-633545	2	Spacer
21	1-613235	4	Washer
22	322-6	1	Screw-HH
23	1-303335	2	Tie-Plastic
24	103-2614	1	Spacer

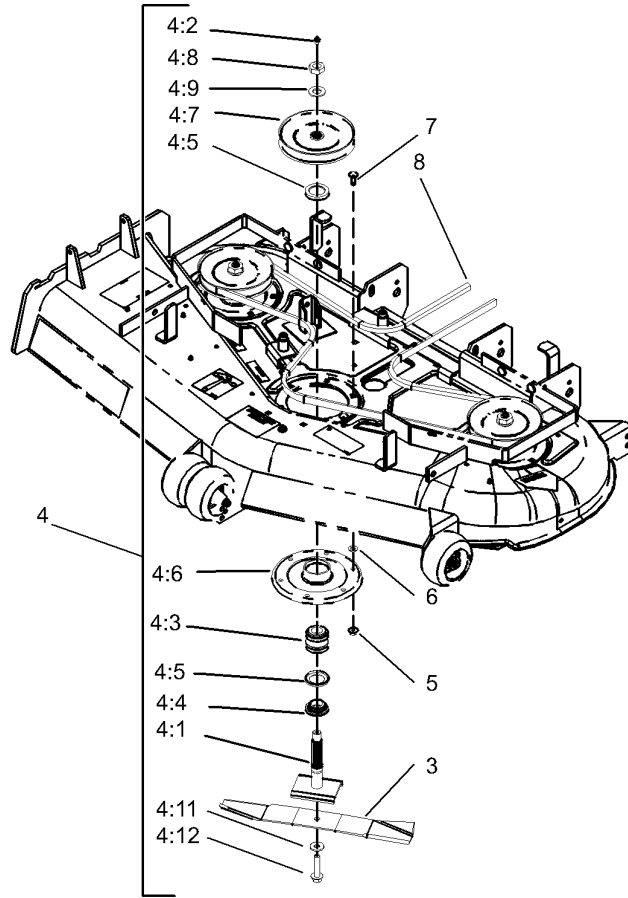
Ref	Part No.	Qty.	Description
25	1-633543-03	1	Strap-Clutch, Brake
26	322-22	1	Screw-HH
27	3256-3	3	Washer-Flat
28	103-2993-03	1	Bracket-Muffler, LH
29	103-2994-03	1	Bracket-Muffler, RH
30	103-2740-03	1	Deflector-Short
31	3229-10	4	Screw-CARR
32	3256-23	4	Washer-Flat
33	32128-33	4	Nut-HF
36		1	Engine-Kawasaki, Fh601v-Ds06
37	1-303334	2	Washer-Spring
38	33114-020	1	Screw-HH
39	33113-016	2	Screw-HH
40	1-805005	1	Washer-Lock
41	103-3218-03	1	Guard-Tailpipe
45	103-3096	1	Spacer



Deck and Wheel Gage Assembly

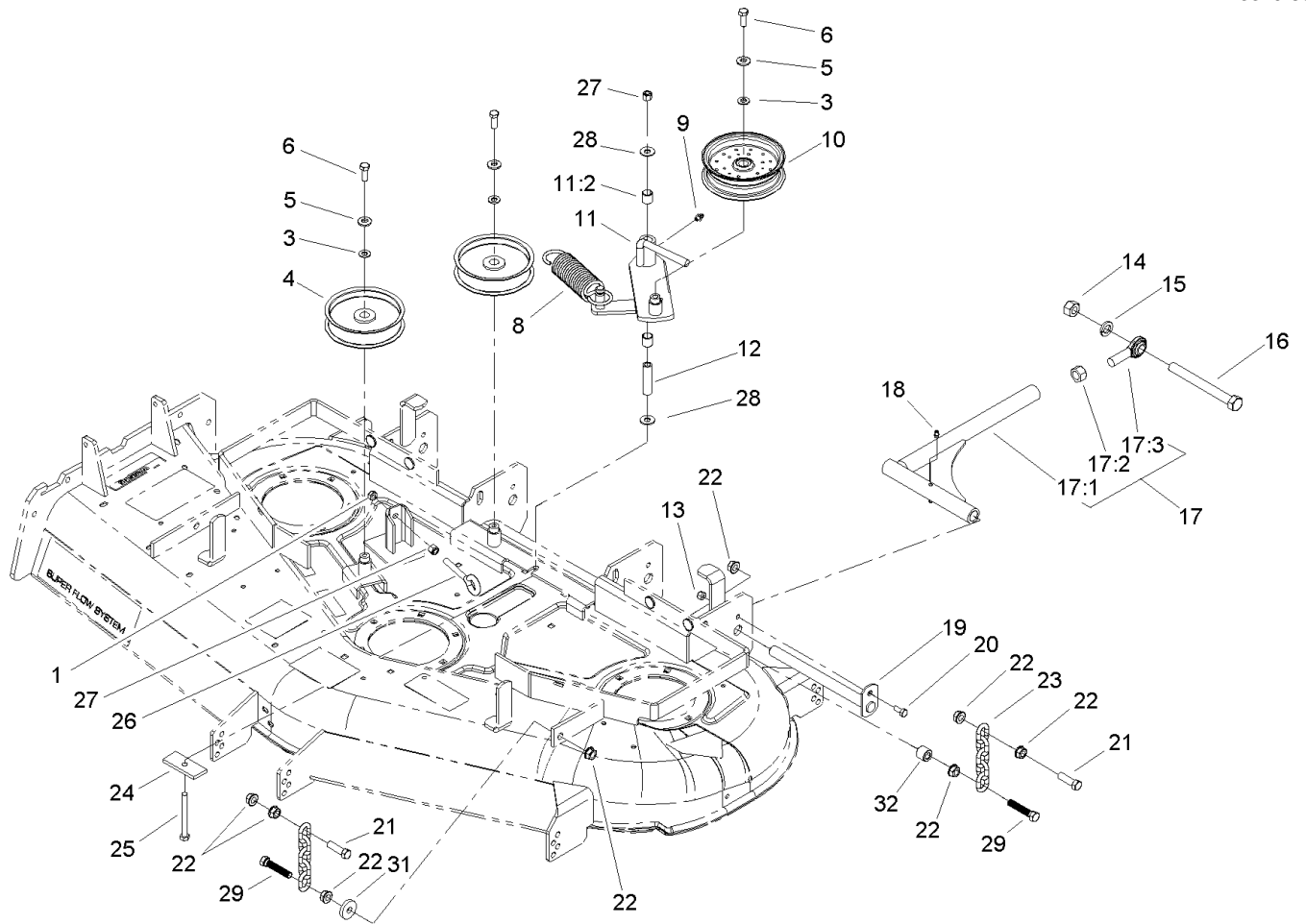
Ref	Part No.	Qty.	Description
1	3290-357	7	Nut-HHF
2	68-2730	5	Wheel-Gage
3	98-5967	1	Spacer
4	323-28	1	Screw-HH
12	32128-17	4	Nut-Lock, Flange
13	249-21	2	Clamp-Slotted
14	99-3896	1	LH Cover ASM
14:2	67-5360	1	Decal-Danger
15	99-3895	1	RH Cover ASM
15:2	67-5360	1	Decal-Danger
16	99-2842	3	Spacer
17	98-5975	3	Washer-Belleville
20	106-5876	1	Deck ASM
22	3290-321	4	Screw-HWH
24	321-1	6	Screw-HH
25	32128-33	6	Nut-HF
26	1-373034	3	Washer

--	--	--	--



Deck Spindle Assembly

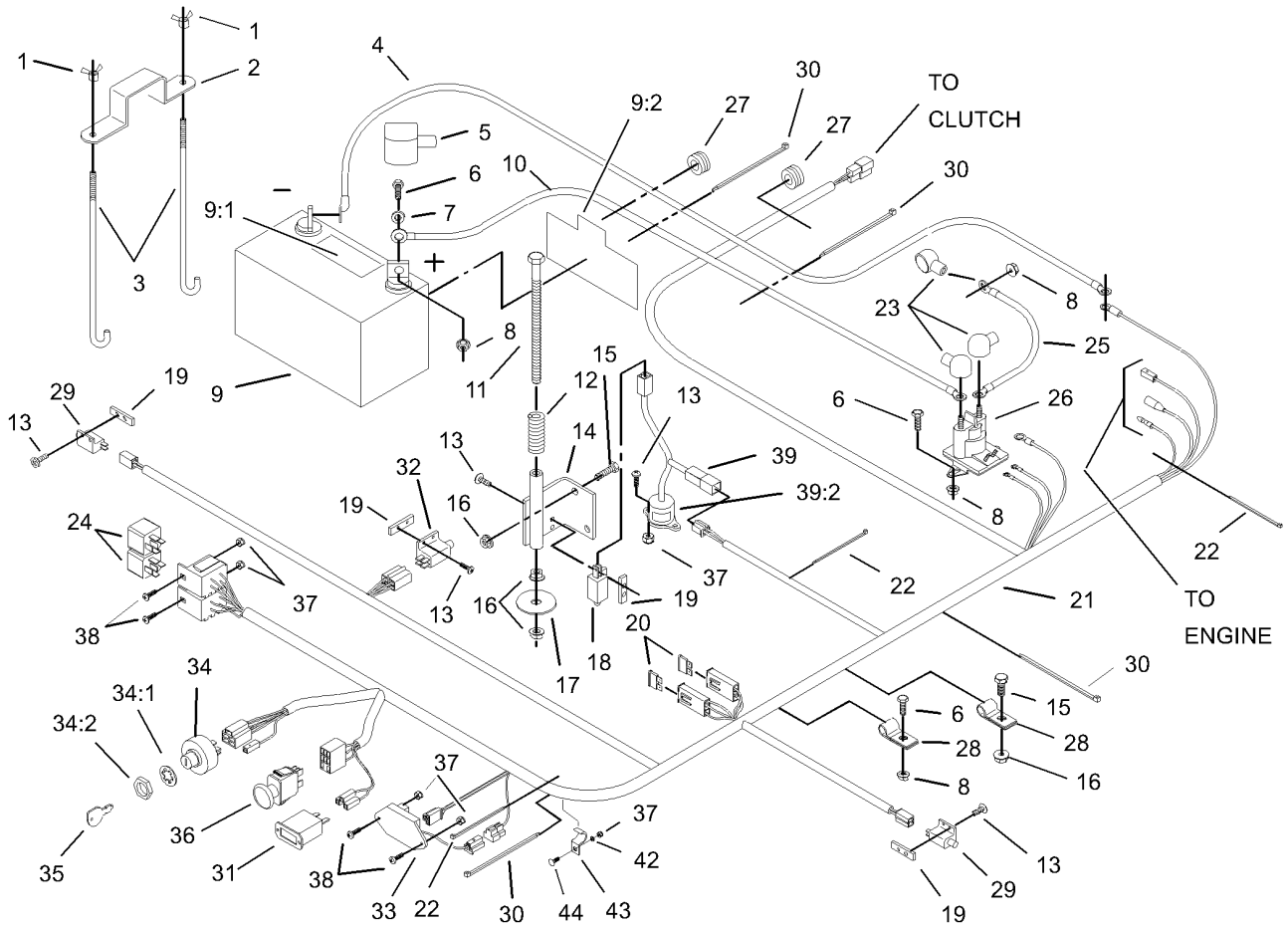
Ref	Part No.	Qty.	Description				
3	56-2390	3	Blade-Sail, Extra High				
4	100-3976	3	Spindle Housing ASM				
4:1	100-3972	1	Spindle Shaft ASM				
4:2	302-2	1	Fitting-Grease				
4:3	46-8530	1	Bearing ASM				
4:4	27-0950	1	Spacer				
4:5	253-139	2	Seal-Oil				
4:6	61-4160	1	Housing-Spindle				
4:7	100-3970	1	Pulley And Hub ASM				
4:8	32146-20	1	Nut-Jam				
4:9	7-4150	1	Washer				
4:11	1-513435	1	Washer-Spring				
4:12	92-5816	1	Bolt-Blade				
5	32128-21	18	Nut-HF				
6	3256-24	6	Washer-Flat				
7	3231-22	18	Screw-CARR				
8	99-3904	1	Belt-Deck				



Idler Pulley, Lift Strut and Chain Assembly

Ref	Part No.	Qty.	Description
1	3217-7	1	Nut-Hex
3	3256-24	3	Washer-Flat
4	1-613098	2	Pulley-Idler
5	98-5975	3	Washer-Belleville
6	323-6	3	Screw-HH
8	103-3330	1	Spring-Extension
9	302-40	1	Fitting-Grease
10	1-413099	1	Pulley-Idler
11	99-3879	1	Idler Arm ASM
11:2	1-513034	2	Sleeve-Bearing
12	1-603384	1	Bushing-Pivot, Idler
13	3296-29	2	Nut-Lock, NI
14	3217-11	2	Nut-Hex
15	3253-8	2	Washer-Lock
16	1-800344	2	Screw
17	103-1081	2	Strut ASM
17:1	103-1072-01	1	Strut
17:2	3219-6	1	Nut-Hex
17:3	1-633029	1	Balljoint-Spherical
18	302-19	4	Fitting-Grease
19	1-632199-01	2	Pin-Strut
20	322-3	2	Screw-HH
21	103-1898	8	Screw-HH
22	32128-37	16	Nut-HF

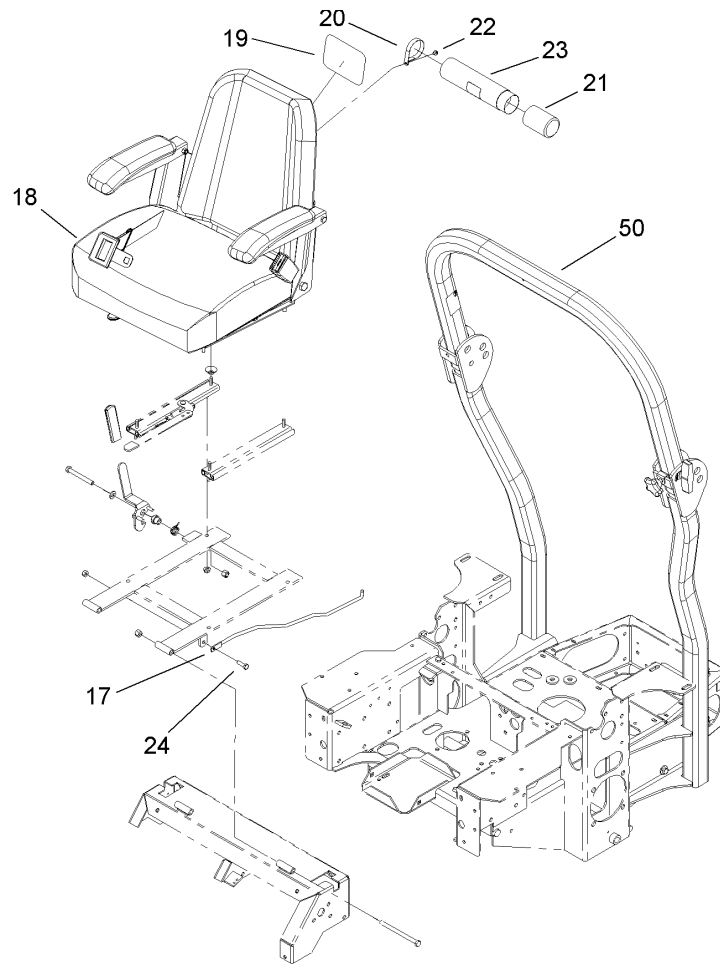
Ref	Part No.	Qty.	Description
23	1-633447	4	Chain-Lift, Deck
24	99-3946-01	1	Plate-Retainer, Bolt
25	1-800805	1	Screw-HH
26	94-2547	1	Bolt-Eye
27	3296-39	2	Nut-Lock, NI
28	1-809107	2	Washer-Hardened
29	107-3076	4	Screw HH
31	112843	2	Washer
32	100-7123	2	Spacer-Bedbar



Electrical System Assembly

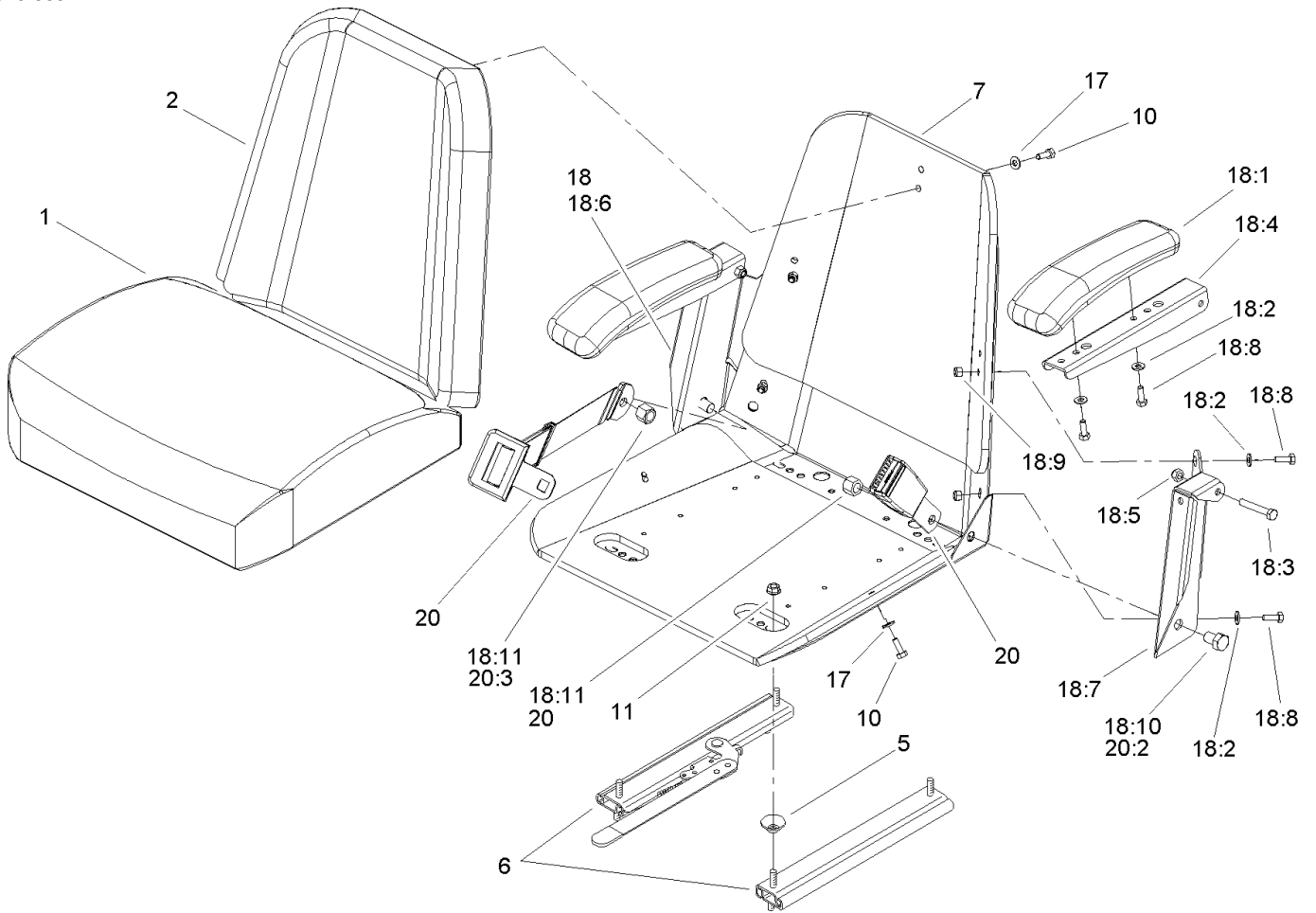
Ref	Part No.	Qty.	Description
1	1-543792	2	Wingnut
2	1-633652-03	1	Strap-Holddown
3	1-633651	2	Bolt-Holddown
4	103-0705	1	Cable-Ground, Negative
5	1-543391	1	Insulator-Battery
6	321-4	5	Screw-HH
7	3256-2	2	Washer-Flat
8	32128-33	6	Nut-HF
9	105-1692	1	Battery
9:1	104-4163	1	Decal-Battery
9:2	104-4164	1	Decal-Battery
10	103-0707	1	Cable-Battery, Positive
11	1-800282	1	Screw-HH
12	1-523415	1	Spring-Switch, Seat
13	3290-500	10	Screw-PPH
14	1-652072-03	1	Bracket-Switch, Seat
15	322-3	3	Screw-HH
16	32128-20	5	Nut-HF
17	1-653036	1	Washer
18	1-513152	1	Switch-Closed, Normally
19	1-633181	4	Plate-Tapped
20	1-816001	2	Fuse-Blade Type, 20 Amp
21	103-0623	1	Harness-Wire
22	1-303287	3	Tie-Plastic

Ref	Part No.	Qty.	Description
23	1-543393	3	Insulator-Solenoid
24	1-643275	2	Relay
25	1-633306	1	Wire-Starter
26	1-513075	1	Switch-Solenoid
27	1-543286	2	Grommet
28	1-633396	2	Clip-Loom
29	1-513051	2	Switch-Open, Normally
30	1-303335	4	Tie-Plastic
31	1-513374	1	Meter-Hour
32	1-633111	1	Switch
33	100-6186	1	Module-Delay, Seat
34	88-9830	1	Key Switch ASM
34:1	3254-5	1	Washer-Tooth
34:2	218-461	1	Nut-HH
35	63-8360	2	Key-Ignition
36	1-633673	1	Switch-Delta
37	3296-2	7	Nut-Lock
38	1-807513	4	Bolt-CARR
39	1-644427	1	Tilt Switch ASM
39:2	1-643401	1	Decal-Switch, Mercury
42	3256-14	1	Washer-Flat
43	103-1193	1	Clip-Half, Loom
44	1-807533	1	Bolt-CARR



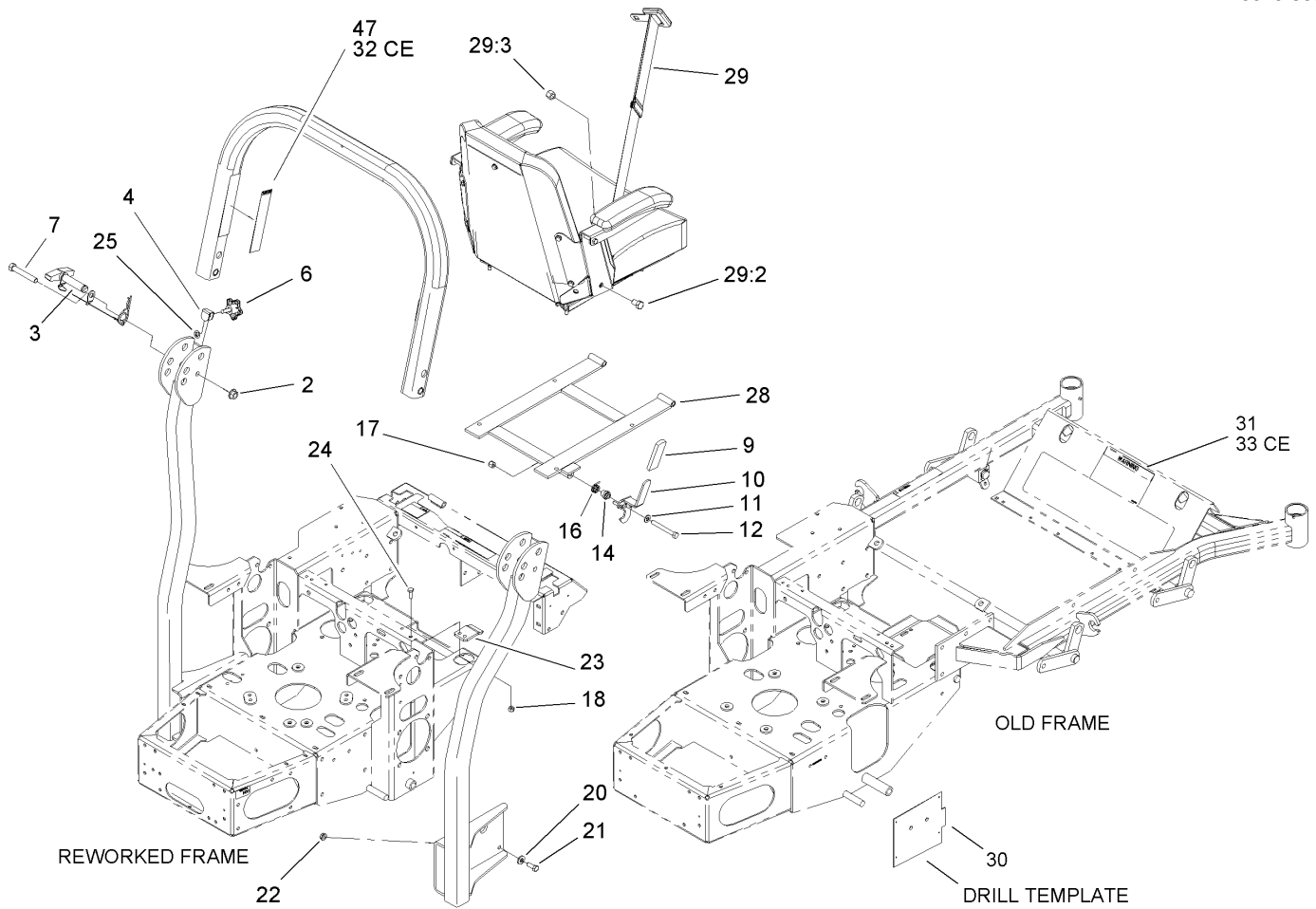
Seat and Roll-Over-Protection-System Assembly

Ref	Part No.	Qty.	Description				
17	103-1731	1	Rod-Retainer, Seat				
18	107-1867	1	Seat ASM				
19	99-4693	1	Decal				
20	2412-120	2	R-Clamp				
21	104-7048	1	Cap-Housing				
22	32104-76	2	Screw				
23	104-7050	1	Housing-Manual				
24	322-5	1	Screw-HH				
50	107-3066	1	Rops ASM				



Seat Assembly No. 107-1867

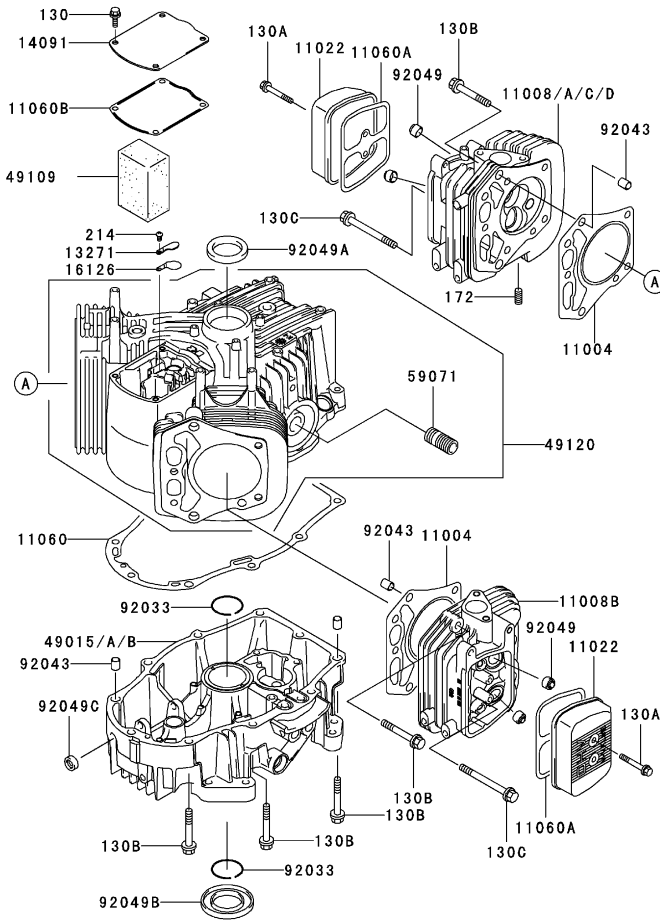
Ref	Part No.	Qty.	Description
1	103-0290	1	Cushion-Seat, Bottom
2	104-7754	1	Cushion-Seat, Back
5	1-543401	4	Spacer-Track
6	1-643255	1	Track-Seat
7	1-633859	1	Frame-Seat
10	321-30	11	Screw-HH
11	32128-20	4	Nut-HF
17	3256-22	11	Washer-Flat
18	105-3620	1	Armrest Kit
18:1	1-633710	2	Cushion-Armrest
18:2	3256-22	4	Washer-Flat
18:3	322-10	2	Screw-HH
18:4	105-3623	2	Channel-Armrest
18:5	32153-3	2	Nut-Lock
18:6	105-3621	1	Bracket-Armrest, RH
18:7	105-3622	1	Bracket-Armrest, LH
18:8	321-30	6	Screw-HH
18:9	3296-42	4	Nut-Lock, NI
18:10	325-2	2	Screw-HH
18:11	3296-23	2	Nut-Lock, NI
20	103-4469	1	Seatbelt Kit
20:2	3212-4	2	Screw-HH
20:3	3296-38	2	Nut-Lock NI



Roll-Over Protection System Assembly No. 107-3066

Ref	Part No.	Qty.	Description
2	32128-23	2	Nut-HF
3	107-3060	2	Pin Latch ASM
4	107-3124	2	Clip
6	106-0887	2	Knob
7	325-13	2	Screw-HH
9	62-9130	1	Grip-Handle
10	107-3083	1	Latch ASM
11	3256-24	1	Washer-Flat
12	323-20	1	Screw-HH
14	107-0075	1	Bushing-Latch, Seat
16	107-0076	1	Spring-Torsion
17	3296-39	1	Nut-Lock, NI
18	3296-29	2	Nut-Lock, NI
20	98-5975	8	Washer-Belleville
21	323-6	8	Screw-HH
22	3290-357	8	Nut-HHF
23	107-3059	1	Catch-Latch, Seat
24	322-4	2	Screw-HH
25	107-3154	2	Nut-Push
28	107-3052-03	1	Frame-Support, Seat
29	103-4469	1	Seatbelt Kit
29:2	3212-4	2	Screw-HH
29:3	3296-38	2	Nut-Lock NI
30	107-3079	1	Template-Mount, Rops

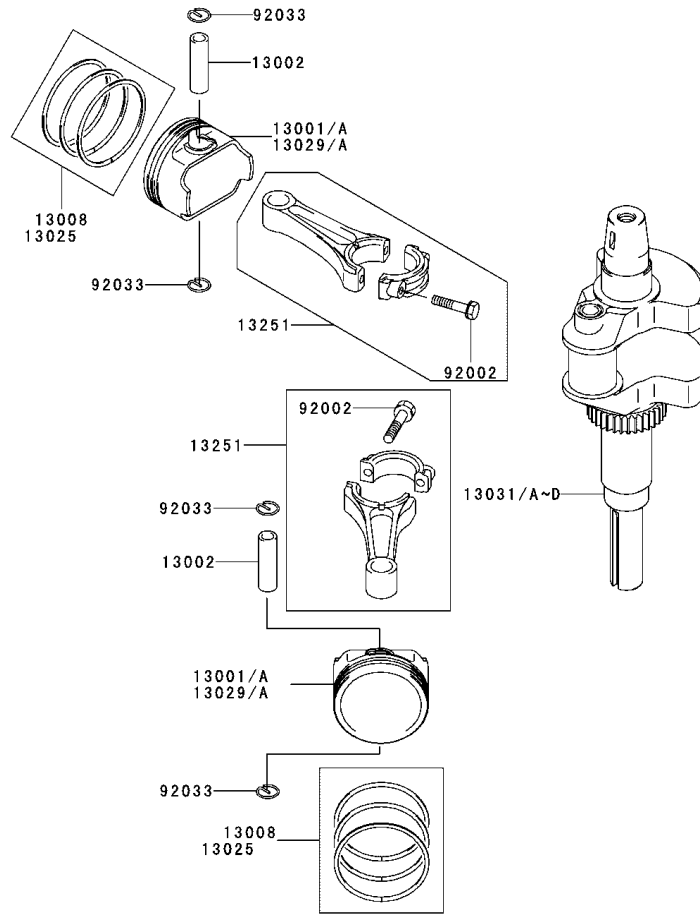
Ref	Part No.	Qty.	Description
31	107-2112	1	Decal-Warning
32	107-3069	1	Decal-Warning, Folding Rops Ce
33	107-1866	1	Decal-Danger, Slope
47	107-2102	1	Decal-Warning, Folding Rops



Cylinder/Crankcase Assembly Kawasaki FH601V-DS06

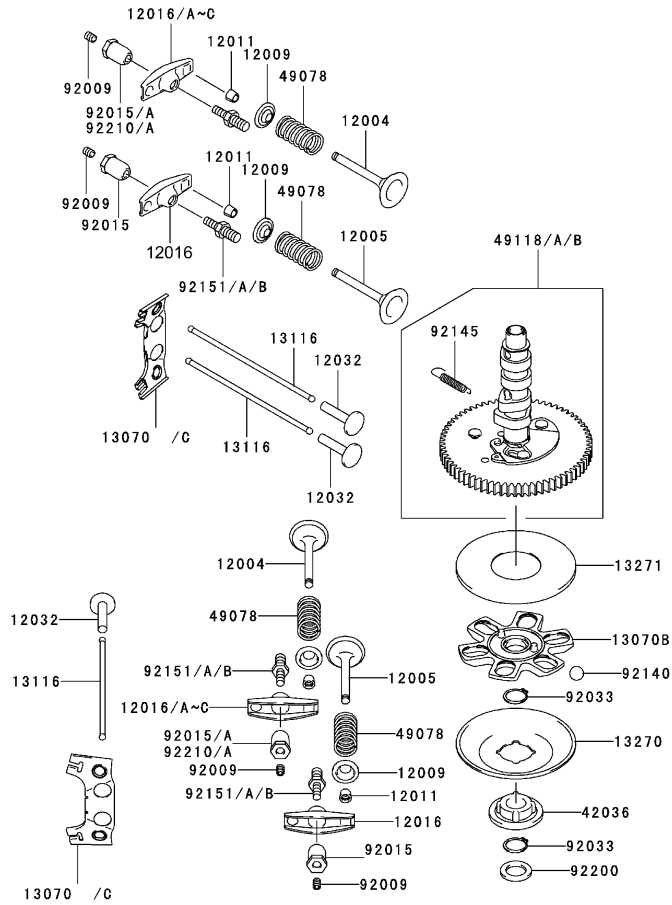
Ref	Part No.	Qty.	Description
11004	11004-7004	2	Gasket-Head
11008	11008-7007	1	Head-Comp-Cylinder No. 1
11008A	11008-7004	1	Head-Comp-Cylinder No. 2
11022	11022-7002	2	Case-Rocker
11060	11060-7012	1	Gasket, Crankcase Cover
11060A	11060-7013	2	Gasket, Rocker Case
11060B	11060-7014	1	Gasket, Breather
13271	13271-7006	1	Plate
14090	14091-7004	1	Cover
16126	16126-7001	1	Valve
49015	49015-6225	1	Cover-Crankcase
49109	49109-7003	1	Element-Breather
49120	49120-6130	1	Crankcase-Comp
59071	59071-2079	1	Joint
92033	92033-7004	2	Ring-Snap
92043	92043-7001	6	Pin
92049	92049-7001	4	Seal-Oil
92049A	92049-7002	1	Seal-Oil
92049B	92049-7004	1	Seal-Oil
92049C	92049-7005	1	Seal-Oil
130	130B0612	4	Bolt-Flanged
130A	130B0640	4	Bolt-Flanged
130B	130T0850	18	Bolt-Flanged
130C	130T0875	2	Bolt-Flanged

Ref	Part No.	Qty.	Description
172	172G0818	4	Bolt-Stud
214	214B0408	1	Screw-Pan



Piston/Crankshaft Assembly Kawasaki FH601V-DS06

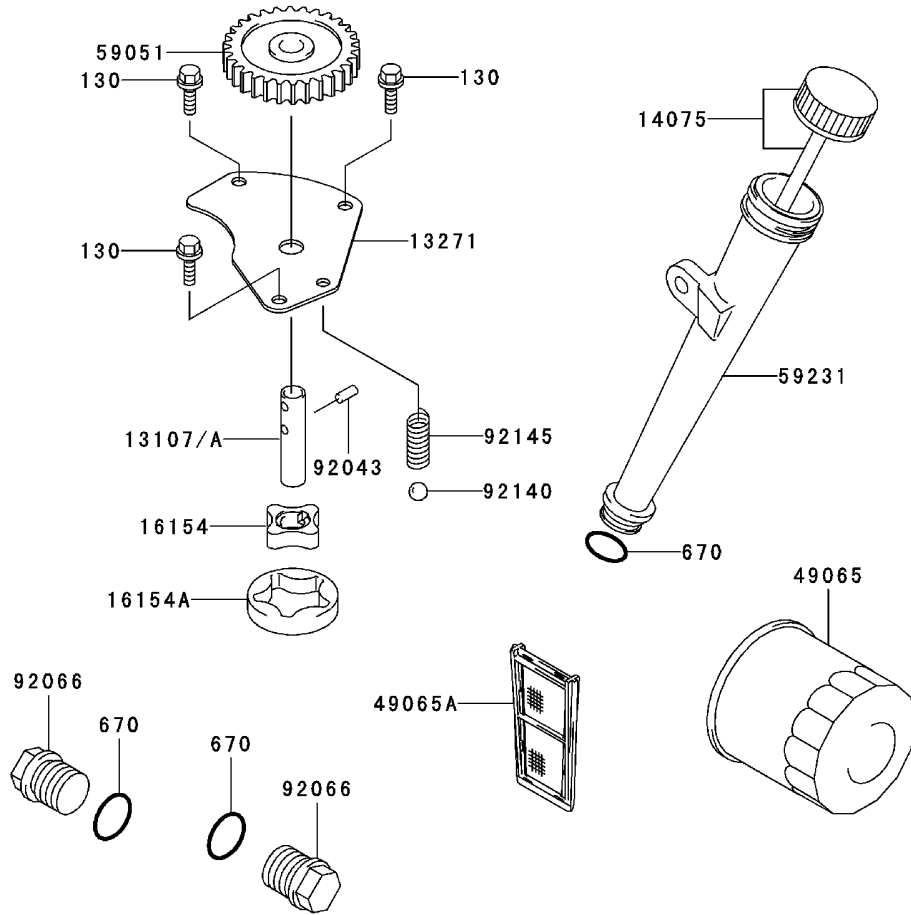
Ref	Part No.	Qty.	Description				
13001	13001-7007	2	Piston-Engine				
13002	13002-7001	2	Pin-Piston				
13008	13008-6058	2	Ring-Set-Piston				
13025	13025-7002	0	Ring-Set, Pistonl,0.50				
13029A	13029-7003	0	Piston-Engine L,0.50				
13031	13031-7015	1	Crankshaft-Comp				
13251	13251-7006	2	Rod-Assy-Connecting				
92002	92002-2053	4	Bolt				
92033	92033-7005	4	Ring-Snap				



Valve/Camshaft Assembly Kawasaki FH601V-DS06

Ref	Part No.	Qty.	Description
12004	12004-7002	2	Valve-Intake
12005	12005-7002	2	Valve-Exhaust
12009	12009-7001	4	Retainer-Valve Spring
12011	12011-2056	8	Collet
12016	12016-7006	4	Arm-Rocker
12032	12032-7001	4	Tappet
13070	13070-7004	1	Guide
13070A	13070-7007	2	Guide
13116	13116-7002	4	Rod-Push
13270	13270-7002	1	Plate
13271	13271-7007	1	Plate
42036	42036-7001	1	Sleeve
49078	49078-7002	4	Spring-Engine Valve
49118	49118-7007	1	Camshaft-Comp
92009	92009-2341	4	Screw
92015	92015-2253	4	Nut
92033	92033-7001	2	Ring-Snap
92140	92140-7002	6	Ball
92145	92145-7001	1	Spring
92151	92151-7019	4	Bolt
92200	92200-7001	1	Washer

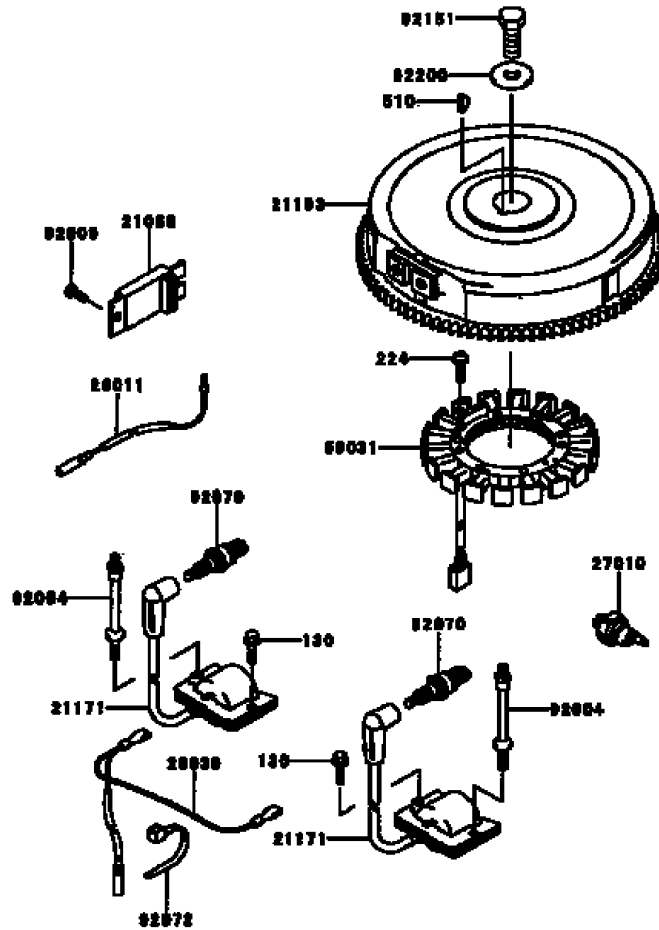
--	--	--	--



Lubrication Equipment Assembly Kawasaki FH601V-DS06

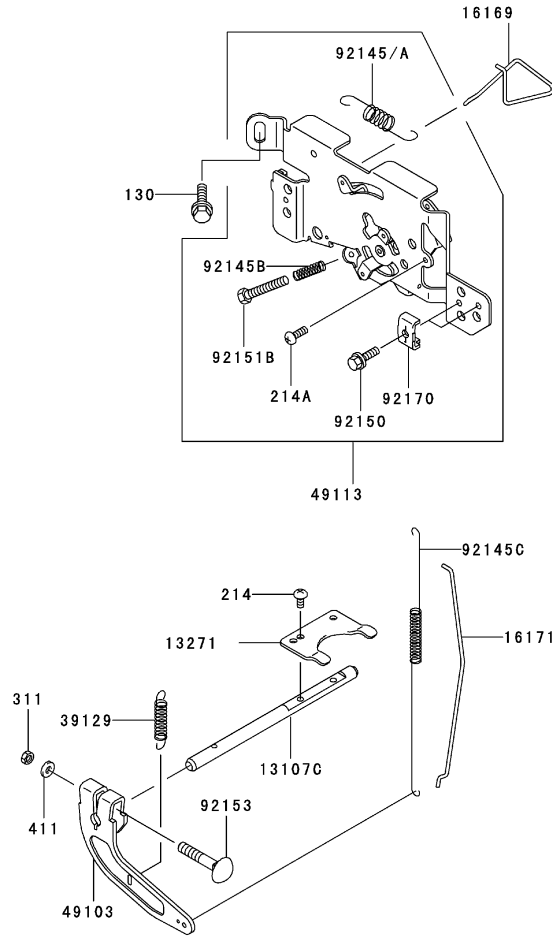
Ref	Part No.	Qty.	Description
13107	13107-7009	1	Shaft
13271	13271-7005	1	Plate
14075	14075-7002	1	Cap-Assy
16154	16154-2053	1	Rotor-Pump,in
16154A	16154-2054	1	Rotor-Pump,out
49065	49065-2078	1	Filter-Oil
49065A	49065-7003	1	Filter-Oil
59051	59051-7004	1	Gear-Spur
59071	59071-7003	1	Joint
59231	59231-7002	1	Filler
92043	92043-7003	1	Pin
92066	92066-7003	2	Plug
92140	92140-7003	1	Ball
92145	92145-7002	1	Spring
130	130B0612	3	Bolt-Flanged
670	670D2016	4	O-Ring

--	--	--	--



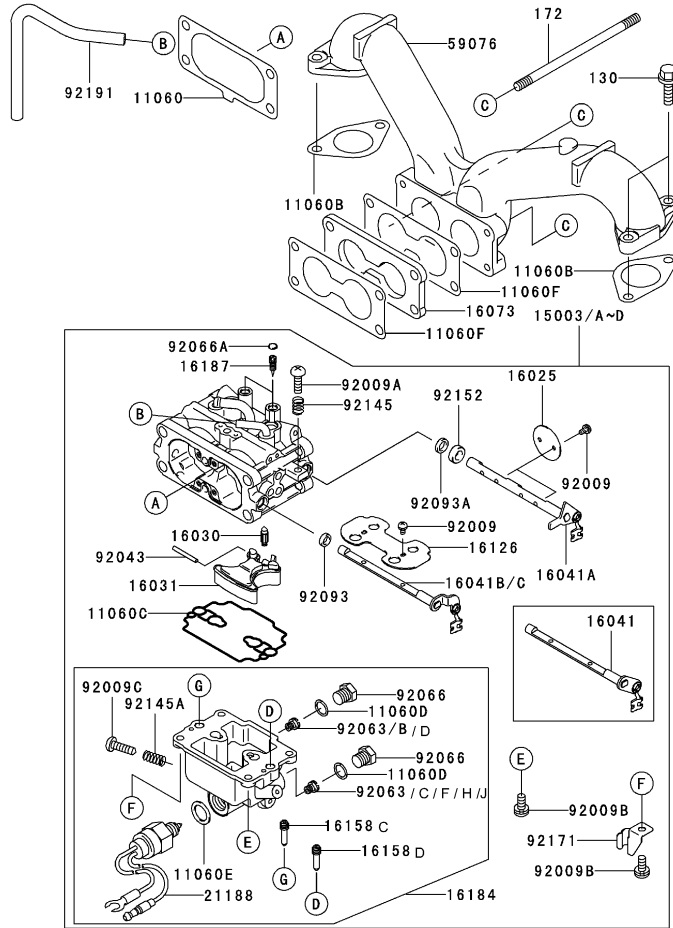
Electric Equipment Assembly Kawasaki FH601V-DS06

Ref	Part No.	Qty.	Description
21066	21066-7003	1	Regulator-Voltage
21171	21171-7001	2	Ignition Coil ASM
21193	21193-7012	1	Flywheel-Assy
26011	26011-7008	1	Wire-Lead
26030	26030-7002	1	Harness
27010	27010-7001	1	Switch
59031	59031-7001	1	Coil-Charging
92004	92004-2147	2	Stud
92009	92009-2308	1	Screw
92070	92070-7004	2	Plug-spark,bpr4es(ngk), Solid
92072	92072-7003	2	Band
92151	92151-2097	1	Bolt
92220	92220-7002	1	Washer
130	130B0620	1	Bolt-Flanged
224	224B0520	4	Screw-Pan-Wp-Cros
510	510A5100	1	Key



Control Equipment Assembly Kawasaki FH601V-DS06

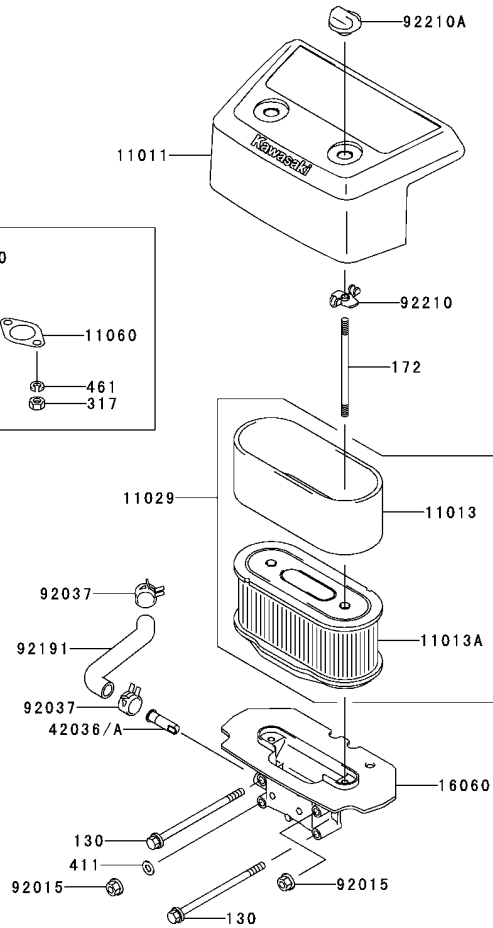
Ref	Part No.	Qty.	Description				
13107	13107-7013	1	Shaft				
13270	13271-7018	1	Plate				
16169	16169-7006	1	Link-Choke				
16171	16171-7004	1	Link				
39129	39129-7004	1	Spring-Governor				
49103	49103-7004	1	Arm-Governor				
49113	49113-7017	1	Panel-Comp-Control				
92145	92145-7005	1	Spring				
92145B	92145-7005	1	Spring				
92145C	92145-7009	1	Spring				
92150	92150-2182	2	Bolt				
92151B	92151-7014	1	Bolt, 5x30				
92153	92151-7005	1	Bolt, 6x35				
92170	92170-7001	2	Clamp				
130	130B0612	2	Bolt-Flanged				
214	214B0408	2	Screw-Pan				
214A	214B0412	1	Screw-Pan				
311	311B0600	1	Nut				
411	411b0600	1	Washer				



Carburetor Assembly Kawasaki FH601V-DS06

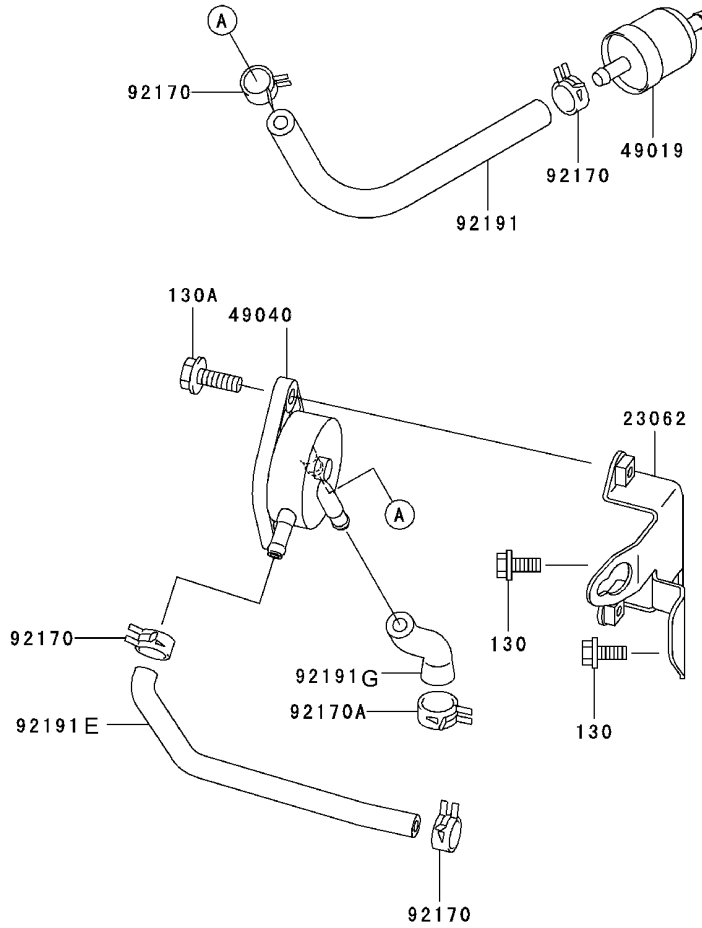
Ref	Part No.	Qty.	Description
11060	11060-7009	1	Gasket, Air Filter
11060F	11060-7024	2	Gasket-Carburetor
11060B	11060-7011	2	Gasket
11060C	11060-7018	1	Gasket, Float Chamber
11060D	11060-7019	2	Gasket, Main Plug
11060E	11060-7020	1	Gasket, Solenoid
15003	15003-7046	1	Carburetor-Assy
16025	16025-7001	2	Valve-Throttle
16030	16030-7002	1	Valve-Float
16031	16031-7001	1	Float
16041	16041-7007	1	Shaft-Carburetor, Choke
16041A	16041-7002	1	Shaft-Carburetor Throttle
16073	16073-7005	1	Insulator
16126	16126-7004	1	Valve, Choke
16158C	16158-7006	2	Jet-Slow, No.56
16158D	16158-7007	2	Jet-Slow, No.56
16184	16184-7006	1	Chamber-Assy-Float
16187	16187-7002	2	Needle-Jet
21188	21188-7001	1	Solenoid
59076	59076-7002	1	Manifold-Intake
92009	92009-7003	6	Screw
92009A	92009-7004	1	Screw
92009B	92009-7005	4	Screw
92009C	92009-7006	1	Screw, Drain

Ref	Part No.	Qty.	Description
92043	92043-7004	1	Pin-Float
92063B	92063-7010	1	Jet-Main
92063C	92063-7011	1	Jet-Main
92063D	92063-7017	0	Jet-Main, No.133
92063F	92063-7018	0	Jet-Main, No.130
92063H	92063-7019	0	Jet-Main, No.139
92063J	92063-7020	0	Jet-Main, No.134
92066	92066-7008	2	Plug, Main Jet
92066A	92066-7009	2	Plug, Extension
92093	92093-7001	1	Seal
92093A	92093-7002	2	Seal
92145	92145-7010	1	Spring
92145A	92145-7011	1	Spring
92152	92152-7001	1	Collar
92171	92171-7001	1	Clamp
92191	92191-7010	1	Tube
130	130B0620	4	Bolt-Flanged
172	172G06105	2	Bolt-Stud



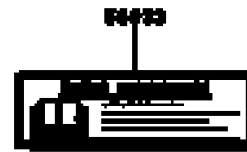
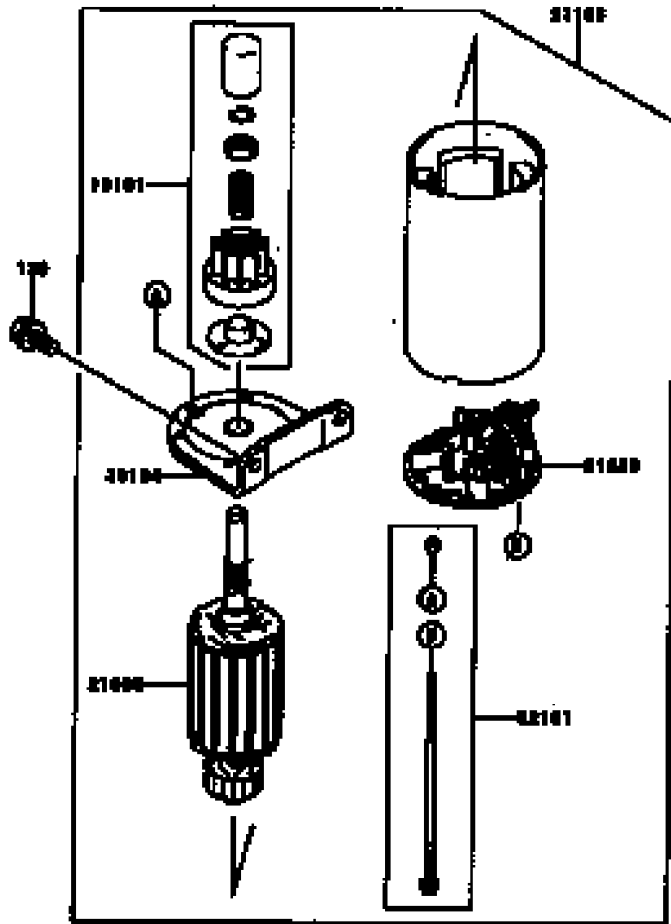
Air-Filter Assembly Kawasaki FH601V-DS06

Ref	Part No.	Qty.	Description	
11011	11011-7003	1	Case-Air Filter	
11013	11013-7009	1	Element-Air Filter	
11013A	11013-7010	1	Element-Air Filter	
11029	11029-7002	1	Element-Assy-Airfilter	
11060	11060-7016	2	Gasket, Muffler	
16060	16060-7001	1	Pipe-Intake	
42036	42036-7002	1	Sleeve	
92015	92015-1193	2	Nut	
92037	92037-2079	2	Clamp	
92191	92191-7006	1	Tube	
92210	92210-7004	2	Nut	
92210A	92210-7008	2	Nut	
130	130B06105	2	Bolt-Flanged	
172	172G0690	2	Bolt-Stud	
317	317R0800	4	Nut-Hex	
411	411b0600	1	Washer	
461	461F0800	4	Washer-Lock	



Fuel Tank/Fuel Valve Assembly Kawasaki FH601V-DS06

Ref	Part No.	Qty.	Description
23062	23062-7004-9H	1	Bracket-Comp
49019	49019-7001	1	Filter-Fuel
49040	49040-2075	1	Pump-Fuel
92170	92170-2088	4	Clamp
92170A	92170-7003	1	Clamp
92191	92191-7003	1	Tube
92191E	92191-7017	1	Tube
92191G	92191-7019	1	Tube
130	130B0616	2	Bolt-Flanged
130A	130B0620	2	Bolt-Flanged



Starter/Decal Kawasaki FH601V-DS06

Ref	Part No.	Qty.	Description
13101	13101-7001	1	Gear ASM
21039	21039-7001	1	Brush
21080	21080-7001	1	Armature
21163	21163-7001	1	Starter-Electric
39184	39184-7001	1	Bracket ASM
92151	92151-7013	1	Bolt
130	130B0816	1	Bolt-Flanged
56033	56033-7001	1	Decal-Manual
56080	56080-7006	1	Decal-Brand

--	--	--	--

NOTES

