



Sand Pro[®] 5020

Model No. 08886—220000001 and Up

Parts Catalog

Ordering Replacement Parts

To order replacement parts, please supply: the part number, the quantity, and the description of each part desired.

Understanding Reference Numbers

Each identified part in an illustration has a reference number. The reference number for a part also appears in the parts list, along with other information about the part.

This catalog uses two special reference number formats, one to indicate parts in a service assembly and another to indicate the quantity of a given part in an illustration.

Service Assembly Reference Numbers

Parts in service assemblies have reference numbers in the form **a:b**. The **a** represents the reference number of the entire service assembly and the **b** represents a sequential number unique to each part within the service assembly.

For example, a wheel assembly might be identified by reference number **6**, the tire by **6:1**, the valve by **6:2**, and the wheel by **6:3**. When you order the assembly identified by reference number **6**, you receive all parts identified by reference numbers **6:1**, **6:2**, and **6:3**. However, you may also order any part individually.

Reference numbers of this type appear in illustrations and in part lists.

Reference Numbers Indicating Quantity

In an illustration, if a reference number indicates more than one part, the reference number has the form **nX y**. The **n** represents the quantity of the part, the **X** is the multiplication symbol, and the **y** represents the reference number.

For example, in an illustration, the reference number **2X 37** means that two of the parts identified by reference number **37** are indicated.

Contents

| Description | Page | Description | Page |
|---|-------------|--|-------------|
| Frame and Sheet Metal Assembly | 4 | Crankshaft Assembly | |
| Steering Assembly | 6 | Briggs and Stratton 350447-1116-E1 | 29 |
| Fuel Tank and Battery Assembly | 7 | Cylinder Head Assembly | |
| Front Wheel Assembly | 8 | Briggs and Stratton 350447-1116-E1 | 30 |
| Hydraulic Motor Assembly No. 98-0958 | 9 | Cylinder Head Assembly | |
| Rear Wheel and Lift Assembly | 10 | Briggs and Stratton 350447-1116-E1 | 31 |
| Hydraulic Cylinder Assembly No. 83-7000 | 12 | Oil Filter, Tube and Pump Assembly | |
| Hydraulic Motor Assembly No. 97-3055 | 13 | Briggs and Stratton 350447-1116-E1 | 32 |
| Hydraulic Motor Assembly No. 98-0959 | 14 | Carburetor Assembly | |
| Traction Pedal Assembly | 15 | Briggs and Stratton 350447-1116-E1 | 33 |
| Pump Control Lever Assembly | 16 | Governor Assembly | |
| Engine Installation Assembly | 17 | Briggs and Stratton 350447-1116-E1 | 34 |
| Hydraulic Pump Installation Assembly | 18 | Blower Housing Assembly | |
| Hydraulic Pump Assembly No. 95-5842 | 19 | Briggs and Stratton 350447-1116-E1 | 35 |
| Hydraulic Reservoir Assembly | 21 | Blower Housing Assembly | |
| Hydraulic Plumbing Assembly | 22 | Briggs and Stratton 350447-1116-E1 | 36 |
| Valve Assembly No. 43-1710-01 | 23 | Starter Assembly | |
| Seat and Brake Assembly | 24 | Briggs and Stratton 350447-1116-E1 | 38 |
| Air Cleaner and Control Panel Assembly | 25 | Starter Assembly | |
| Electrical Schematic | 26 | Briggs and Stratton 350447-1116-E1 | 39 |
| Cylinder Assembly | | Engine Gasket Kit | |
| Briggs and Stratton 350447-1116-E1 | 27 | Briggs and Stratton 350447-1116-E1 | 40 |
| Crankcase Assembly | | Valve Gasket Set and Carburetor Overhaul Kit | |
| Briggs and Stratton 350447-1116-E1 | 28 | Briggs and Stratton 350447-1116-E1 | 41 |

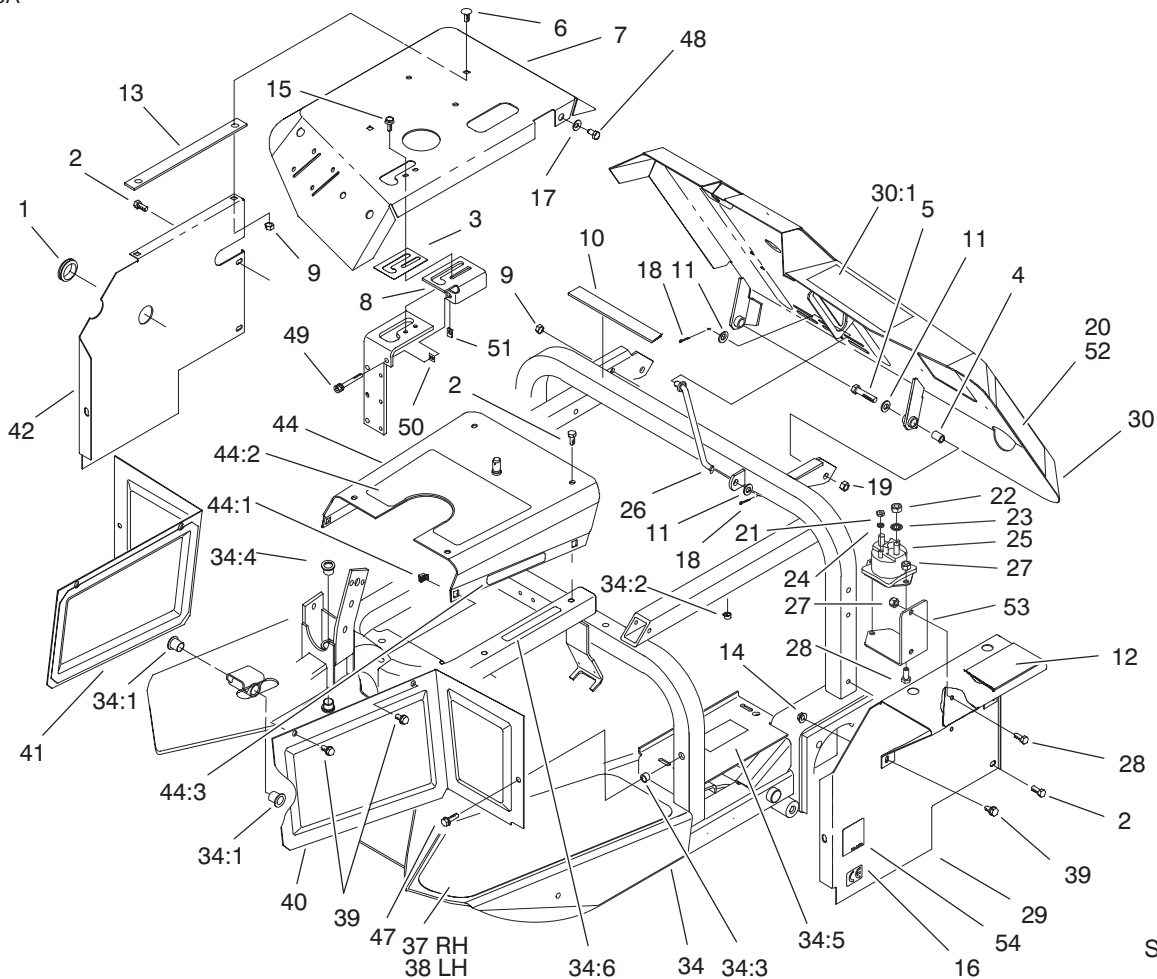
Accessories

| Description | Model / Part No. | Description | Model / Part No. |
|--------------------------|------------------|-----------------------------------|------------------|
| Rake Mounting kit | 08814 | Tooth Rake | 08812 |
| Spring Rake | 08813 | Weeder/Cultivator | 08815 |
| Dozer Blade | 08821 | Drag Mat Kit | 08850 |
| Finish Grader | 08867 | Spiker | 08856 |
| Debris Blower | 08857 | Chute Discharge Kit–Debris Blower | 08860 |
| Sand Blade 240 | 44900 | 240 Sand Blade Mounting Kit | 44901 |
| Seat with Suspension Kit | 30797 | Seat Adapter Plate | 92–7171 |
| Draw Bar | 92–2330 | Spark Arrestor | 83–2240 |
| Blower Mounting Kit | 08859 | Sandpro 5020 CE Kit | 98–0990 |

Part Description Abbreviations

Part descriptions in this catalog may include the following abbreviations.

| Abbreviation | Meaning | Abbreviation | Meaning |
|--------------|-----------------------------------|--------------|-------------------------|
| AR | as required | HYD | hydraulic |
| ASM | assembly | INC | incorporated |
| CARR | carriage | LH | left hand |
| DEG | degrees | NI | nylon insert |
| FH | flat head | PPH | Phillips pan head |
| GA | gauge | PTH | Phillips truss head |
| HF | hex flange | PTO | power take off |
| HH | hex head | RH | right hand |
| HHF | hex head flange | SFH | slotted fillister head |
| HLH | hex lag head | SHH | slotted hex head |
| HJ | hex jam | SQH | square head |
| HOC | height-of-cut | SHWH | slotted hex washer head |
| HS | hex socket | SPH | slotted pan head |
| HSBH | hex socket button head | SRH | slotted round head |
| HSFH | hex socket flat head | STD | standard |
| HSH | hex socket head | TAP | self tapping |
| HWH | hex washer head | TTH | Torx truss head |
| HWHTF | hex washer head thread forming | WH | wing head |

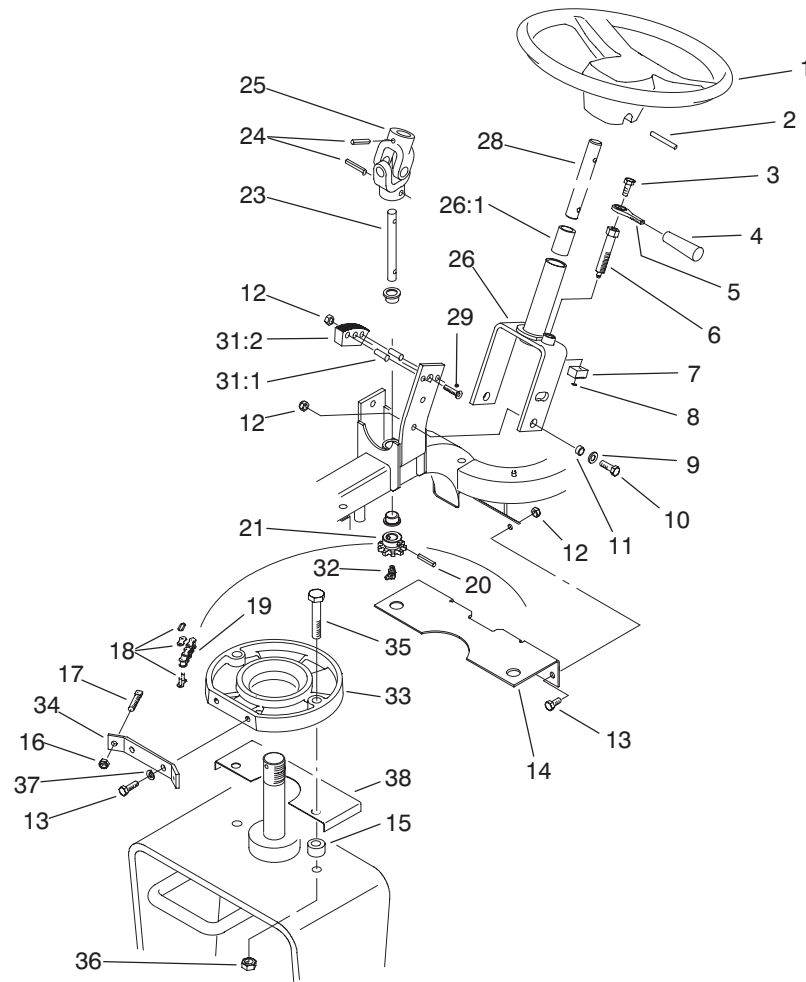


Sheet No.:2

Frame and Sheet Metal Assembly

| Ref. No. | Part No. | Qty. | Description |
|----------|------------|------|-----------------------|
| 1 | 240-3 | 1 | Grommet-Rubber |
| 2 | 32144-11 | 8 | Screw-TAP |
| 3 | 99-1629 | 1 | Guide-Lever |
| 4 | 85-0290 | 2 | Spacer-Pivot, Seat |
| 5 | 323-9 | 2 | Screw-HH |
| 6 | 3230-20 | 2 | Screw-CARR |
| 7 | 98-0918-01 | 1 | Fender-RH |
| 8 | 98-8160 | 1 | Plate-Latch, Lever |
| 9 | 3296-29 | 3 | Nut-Lock, NI |
| 10 | 98-0980 | 1 | Strip-Base, Seat |
| 11 | 3256-24 | 4 | Washer-Flat |
| 12 | 98-0981 | 1 | Pad-Base, Seat |
| 13 | 98-0982 | 1 | Strip-Fender |
| 14 | 32128-20 | 1 | Nut-HF |
| 15 | 3234-4 | 2 | Screw-HHF |
| 16 | 93-7252 | 1 | Decal-International |
| 17 | 3256-2 | 1 | Washer-Flat |
| 18 | 3272-4 | 2 | Pin-Cotter |
| 19 | 3296-39 | 2 | Nut-Lock, NI |
| 20 | 98-0972 | 2 | Decal-Sand Pro 5020 |
| 21 | 3219-14 | 2 | Nut-Hex |
| 22 | 3218-13 | 2 | Nut-Jam |
| 23 | 3254-2 | 2 | Washer-Lock, Internal |
| 24 | 3254-1 | 2 | Washer-Lock, Internal |
| 25 | 28-4210 | 1 | Solenoid |
| 26 | 98-0917 | 1 | Rod-Prop |

| Ref. No. | Part No. | Qty. | Description |
|----------|------------|------|-------------------------------|
| 27 | 3296-42 | 4 | Nut-Lock, NI |
| 28 | 321-3 | 4 | Screw-HH |
| 29 | 98-0966-03 | 1 | Panel-Rear, LH |
| 30 | 98-8150 | 1 | Seat Base ASM |
| 30:1 | 93-9053 | 1 | Decal-Warning |
| 34 | 98-0962 | 1 | Frame ASM |
| 34:1 | 256-219 | 2 | Bushing |
| 34:2 | 32148-11 | 1 | Insert-Threaded |
| 34:3 | 32148-8 | 2 | Insert-Threaded |
| 34:4 | 65-8770 | 2 | Bushing-Bellcrank |
| 34:5 | 93-6668 | 1 | Decal-Battery |
| 34:6 | 93-9052 | 1 | Decal-Danger |
| 37 | 85-8780 | 1 | Tread-Floor, RH |
| 38 | 85-8790 | 1 | Tread-Floor, LH |
| 39 | 3234-7 | 5 | Screw-HHF |
| 40 | 85-9680-01 | 1 | Panel-LH |
| 41 | 85-8490-01 | 1 | Panel-RH |
| 42 | 98-0902-03 | 1 | Panel-Rear, RH |
| 44 | 98-0965 | 1 | Top Panel ASM |
| 44:1 | 3290-496 | 4 | Nut-Retainer |
| 44:2 | 93-9050 | 1 | Decal-Instructions, Operating |
| 44:3 | 93-9052 | 2 | Decal-Danger |
| 47 | 3234-29 | 2 | Screw-HHF |
| 48 | 322-2 | 1 | Screw-HH |
| 49 | 3274-56 | 1 | Screw-HSH |



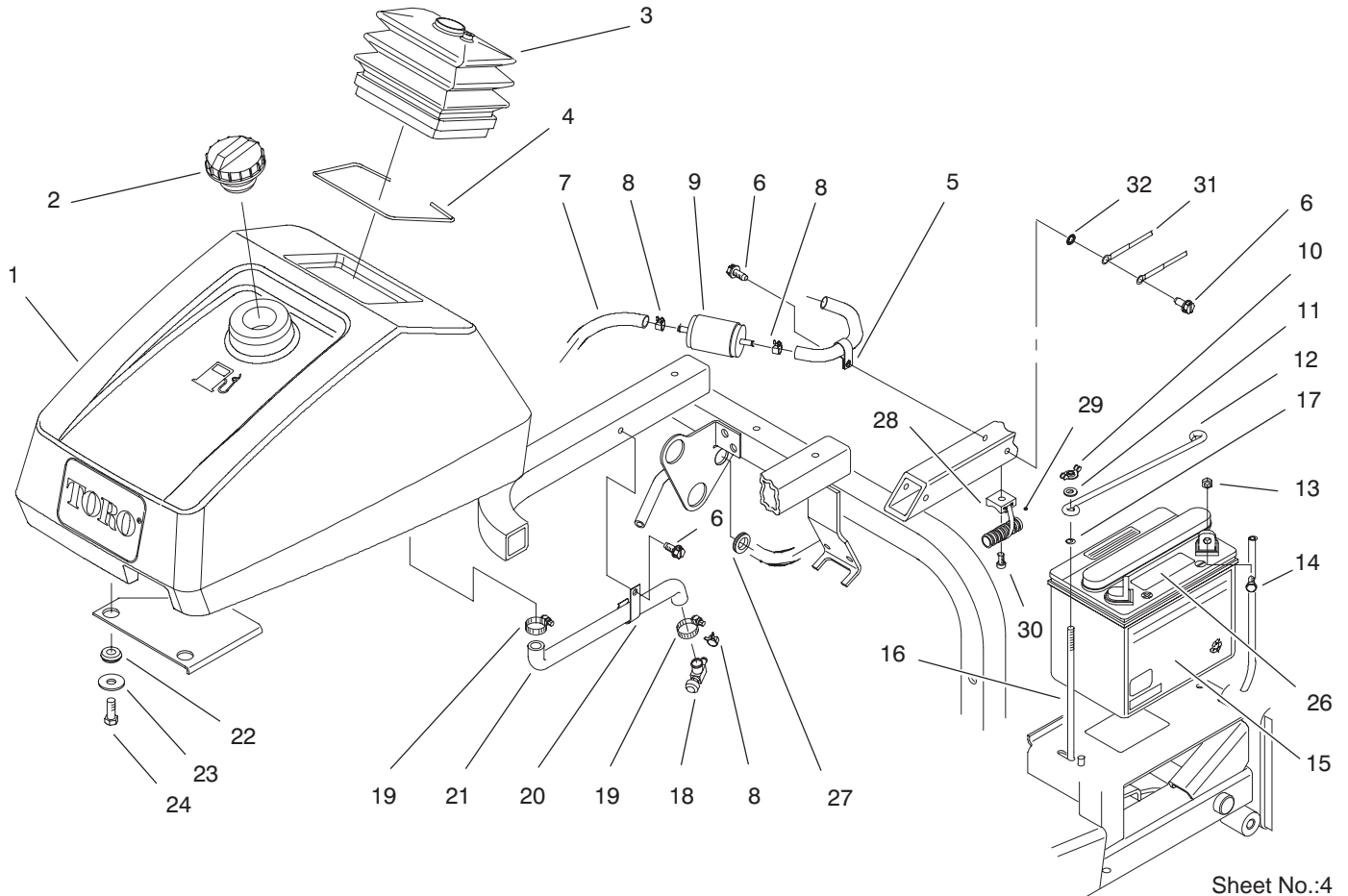
Sheet No.:3

Steering Assembly

| Ref. No. | Part No. | Qty. | Description |
|----------|------------|------|----------------------------|
| 1 | 76-1420 | 1 | Wheel-Steering |
| 2 | 32121-111 | 1 | Pin-Roll |
| 3 | 322-43 | 1 | Screw-HH |
| 4 | 233-39 | 1 | Knob-Control |
| 5 | 88-8280 | 1 | Lever-Adjustment, Steering |
| 6 | 94-4514 | 1 | Pin-Lock, Tilt |
| 7 | 88-8530 | 1 | Block-Lock, Upper |
| 8 | 94-4513 | 1 | Ring-Retaining |
| 9 | 3256-23 | 3 | Washer-Flat |
| 10 | 322-5 | 3 | Screw-HH |
| 11 | 85-9120 | 3 | Spacer-Pivot, Tilt |
| 12 | 3296-29 | 6 | Nut-Lock, NI |
| 13 | 322-3 | 4 | Screw-HH |
| 14 | 98-0983-01 | 1 | Bracket-Tank, Fuel |
| 15 | 98-0978 | 2 | Spacer |
| 16 | 3296-4 | 2 | Nut-Lock, NI |
| 17 | 18-6380 | 2 | Pin-Adjustment, Steering |
| 18 | 2710-11 | 2 | Link-Chain |
| 19 | 85-8030 | 1 | Chain |
| 20 | 98-0973 | 1 | Pin-Grooved |
| 21 | 85-9180 | 1 | Sprocket-Steering |
| 23 | 98-0928 | 1 | Shaft-Steering, Lower |
| 24 | 32121-15 | 2 | Pin-Roll |
| 25 | 85-9200 | 1 | Knuckle-Steering |

| Ref. No. | Part No. | Qty. | Description |
|----------|------------|------|----------------------|
| 26 | 88-8290 | 1 | Steering Bracket ASM |
| 26:1 | 256-185 | 1 | Bushing |
| 28 | 85-9220 | 1 | Steering-Upper |
| 29 | 3289-24 | 1 | Screw-HSFH |
| ☆31 | | 1 | Lock Block & Pin ASM |
| 31:1 | 88-8510 | 2 | Pin-Dowel |
| 31:2 | 88-8520 | 1 | Block-Lock, Lower |
| 32 | 302-33 | 1 | Fitting-Grease |
| 33 | 98-0924-01 | 1 | Guide-Chain |
| 34 | 98-0925 | 1 | Bracket-Chain |
| 35 | 325-12 | 2 | Screw-HH |
| 36 | 3296-25 | 2 | Nut-Lock NI |
| 37 | 3253-4 | 2 | Washer-Lock |
| 38 | 98-0929-01 | 1 | Plate-Stay, Chain |

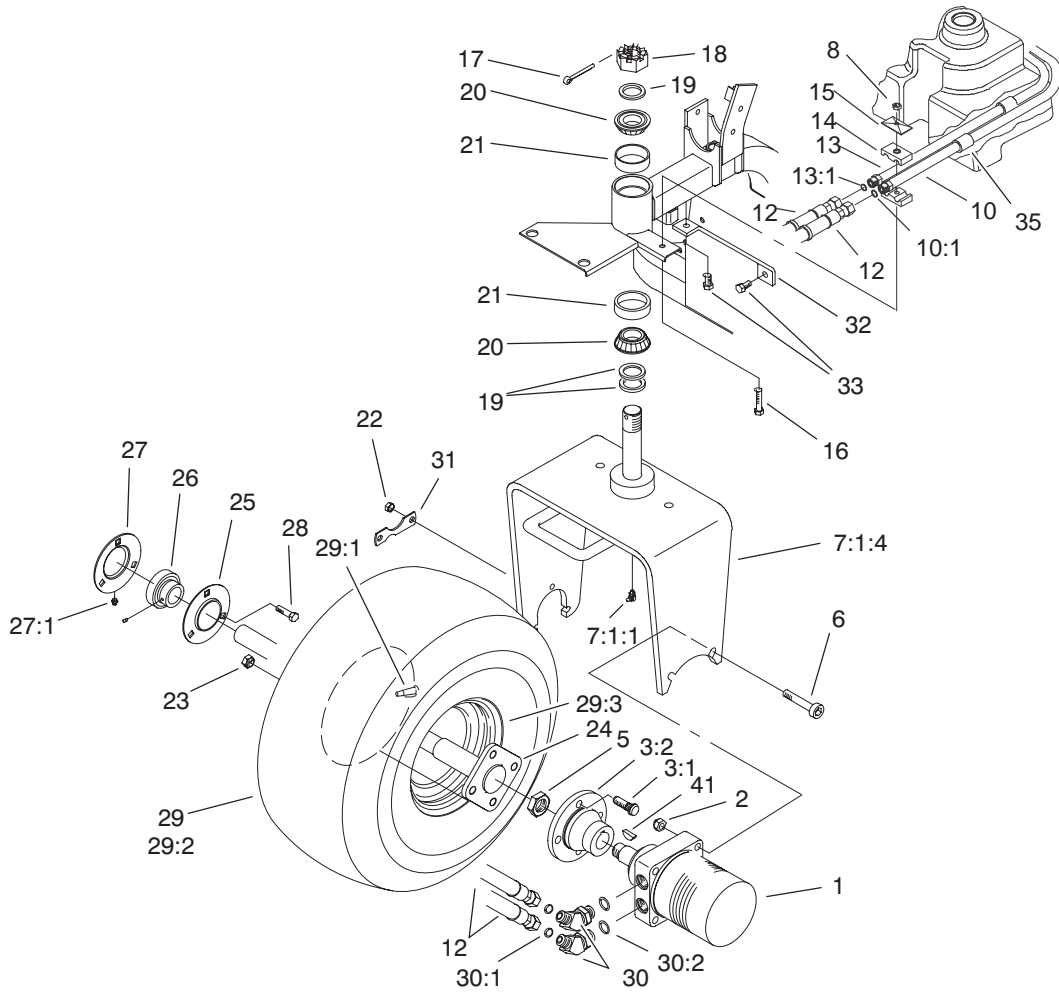
☆ Not serviced separately



Sheet No.:4

Fuel Tank and Battery Assembly

| Ref. No. | Part No. | Qty. | Description | Ref. No. | Part No. | Qty. | Description |
|----------|----------|------|------------------------|----------|----------|------|-----------------------|
| 1 | 98-0927 | 1 | Tank-Fuel | 27 | 237-124 | 1 | Grommet |
| 2 | 93-7170 | 1 | Cap-Fuel | 28 | 3290-509 | 1 | Tie-Mount |
| 3 | 85-9010 | 1 | Boot-Steering | 29 | 3290-378 | 1 | Tie-Cable |
| 4 | 85-8930 | 1 | Retainer-Boot | 30 | 3274-31 | 1 | Screw-HSBH |
| 5 | 2412-93 | 1 | Clamp-R | 31 | 98-0999 | 1 | Ground Wire ASM |
| 6 | 32144-11 | 3 | Screw-TAP | 32 | 3254-2 | 1 | Washer-Lock, Internal |
| 7 | 98-0976 | 1 | Hose-Gas | | | | |
| 8 | 2412-98 | 3 | Clamp | | | | |
| 9 | 94-2690 | 1 | Filter-Fuel | | | | |
| 10 | 32103-12 | 2 | Nut-Wing | | | | |
| 11 | 3256-22 | 2 | Washer-Flat | | | | |
| 12 | 72-4790 | 1 | Hold Down-Battery | | | | |
| 13 | 3217-5 | 2 | Nut-Hex | | | | |
| 14 | 321-3 | 2 | Screw-HH | | | | |
| 15 | 92-1678 | 1 | Battery | | | | |
| 16 | 56-7720 | 2 | Post-Battery | | | | |
| 17 | 237-143 | 2 | O-Ring | | | | |
| 18 | 83-1390 | 1 | Fitting-Shut-Off, Fuel | | | | |
| 19 | 2412-36 | 2 | Clamp-Hose | | | | |
| 20 | 2412-109 | 1 | Clip-J | | | | |
| 21 | 98-0995 | 1 | Hose-Fuel | | | | |
| 22 | 240-11 | 4 | Grommet-Mount, Tank | | | | |
| 23 | 63-8410 | 4 | Washer | | | | |
| 24 | 323-5 | 4 | Screw-HH | | | | |
| 26 | 93-7276 | 1 | Decal-Danger | | | | |



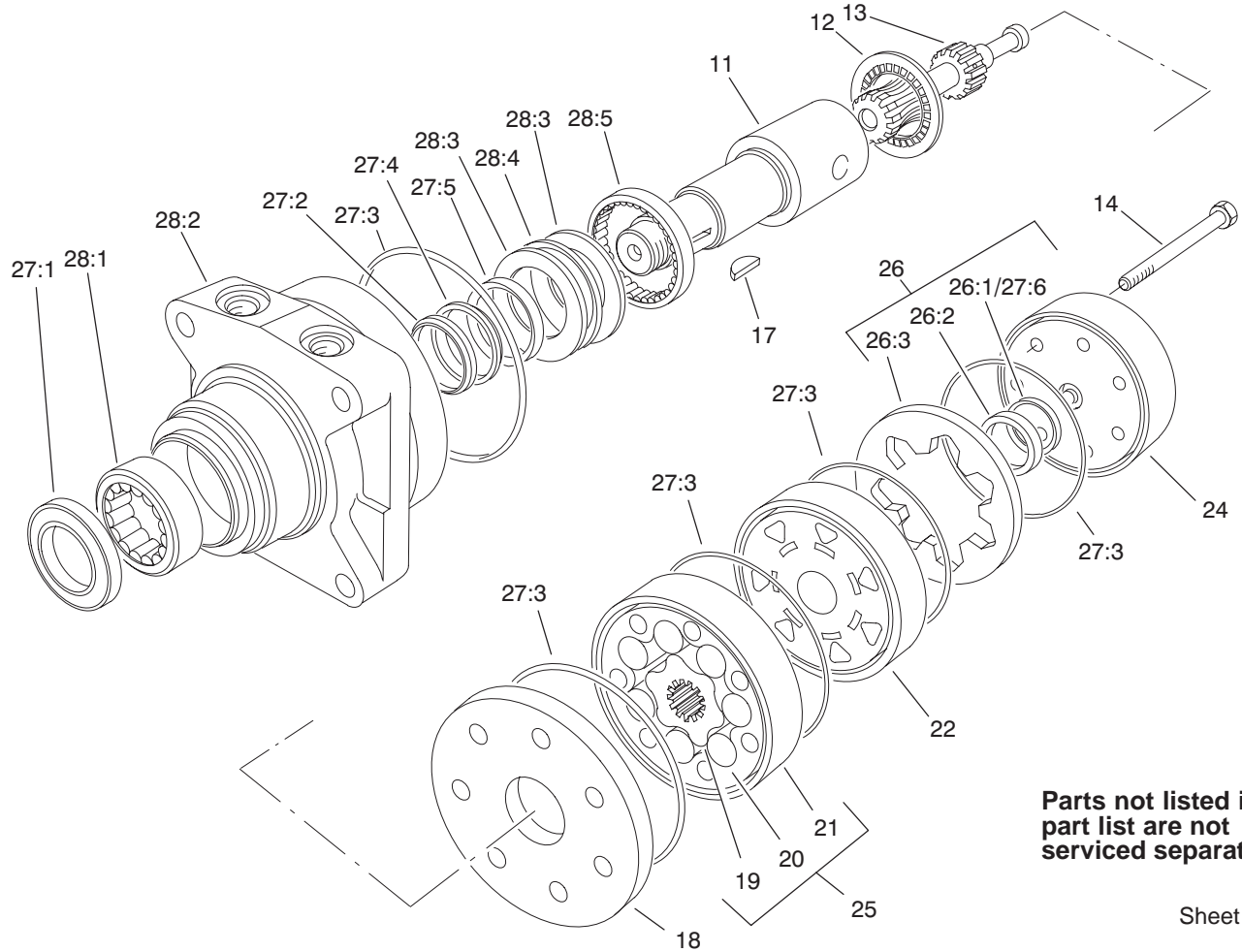
Sheet No.:5

Front Wheel Assembly

| Ref. No. | Part No. | Qty. | Description |
|----------|------------|------|---------------------|
| 1 | 98-0958 | 1 | Motor-Hydraulic |
| 2 | 3296-23 | 2 | Nut-Lock, NI |
| ☆3 | | 1 | Front Wheel Hub ASM |
| 3:1 | 10-6830 | 4 | Stud-Type, Drive |
| 3:2 | 93-6838-03 | 1 | Hub-Wheel |
| 5 | 26-3790 | 1 | Nut-Lock |
| 6 | 3274-93 | 2 | Screw-HSH |
| ☆7 | | 1 | Fork ASM |
| 7:1:1 | 302-33 | 1 | Fitting-Grease |
| 7:1:4 | 98-0950-01 | 1 | Fork |
| 8 | 3296-8 | 1 | Nut-Lock NI |
| 10 | 98-0932 | 1 | Tube -Front, LH |
| 10:1 | 237-30 | 1 | O-Ring |
| 12 | 85-9640 | 2 | Hose-HYD |
| 13 | 98-0933 | 1 | Tube -Front, RH |
| 13:1 | 237-30 | 2 | O-Ring |
| 14 | 56-7976 | 2 | Clamp-Tube |
| 15 | 69-9760 | 1 | Coverplate |
| 16 | 321-10 | 1 | Screw-HH |
| 17 | 3272-37 | 1 | Pin-Cotter |
| 18 | 32136-9 | 1 | Nut-Hex, Slot |
| 19 | 18-6320 | 3 | Washer-Steering |
| 20 | 254-70 | 2 | Bearing-Cone |
| 21 | 254-61 | 2 | Bearing-Cup |
| 22 | 3296-39 | 3 | Nut-Lock, NI |
| 23 | 242-50 | 4 | Nut-Lug |

| Ref. No. | Part No. | Qty. | Description |
|----------|------------|------|------------------|
| 24 | 92-8969 | 1 | Spindle |
| 25 | 85-8950 | 1 | Flangette-STD |
| 26 | 251-352 | 1 | Bearing |
| 27 | 85-8940 | 1 | Flangette-Relube |
| 27:1 | 302-5 | 1 | Fitting-Grease |
| 28 | 323-29 | 3 | Screw-HH |
| ☆29 | | 1 | Wheel & Tire ASM |
| 29:1 | 232-35 | 1 | Stem-Valve |
| 29:2 | 85-8290 | 1 | Tire |
| 29:3 | 94-6116 | 1 | Wheel-Rear |
| 30 | 340-89 | 2 | Fitting-HYD, 45° |
| 30:1 | 237-30 | 1 | O-Ring |
| 30:2 | 237-80 | 1 | O-Ring |
| 31 | 88-8350 | 1 | Tab-Bearing |
| 32 | 98-0926-01 | 1 | Strap |
| 33 | 105-6245 | 2 | Screw-Tapping |
| 35 | 38-3400 | 2 | Guard-Rubber |

☆ Not serviced separately



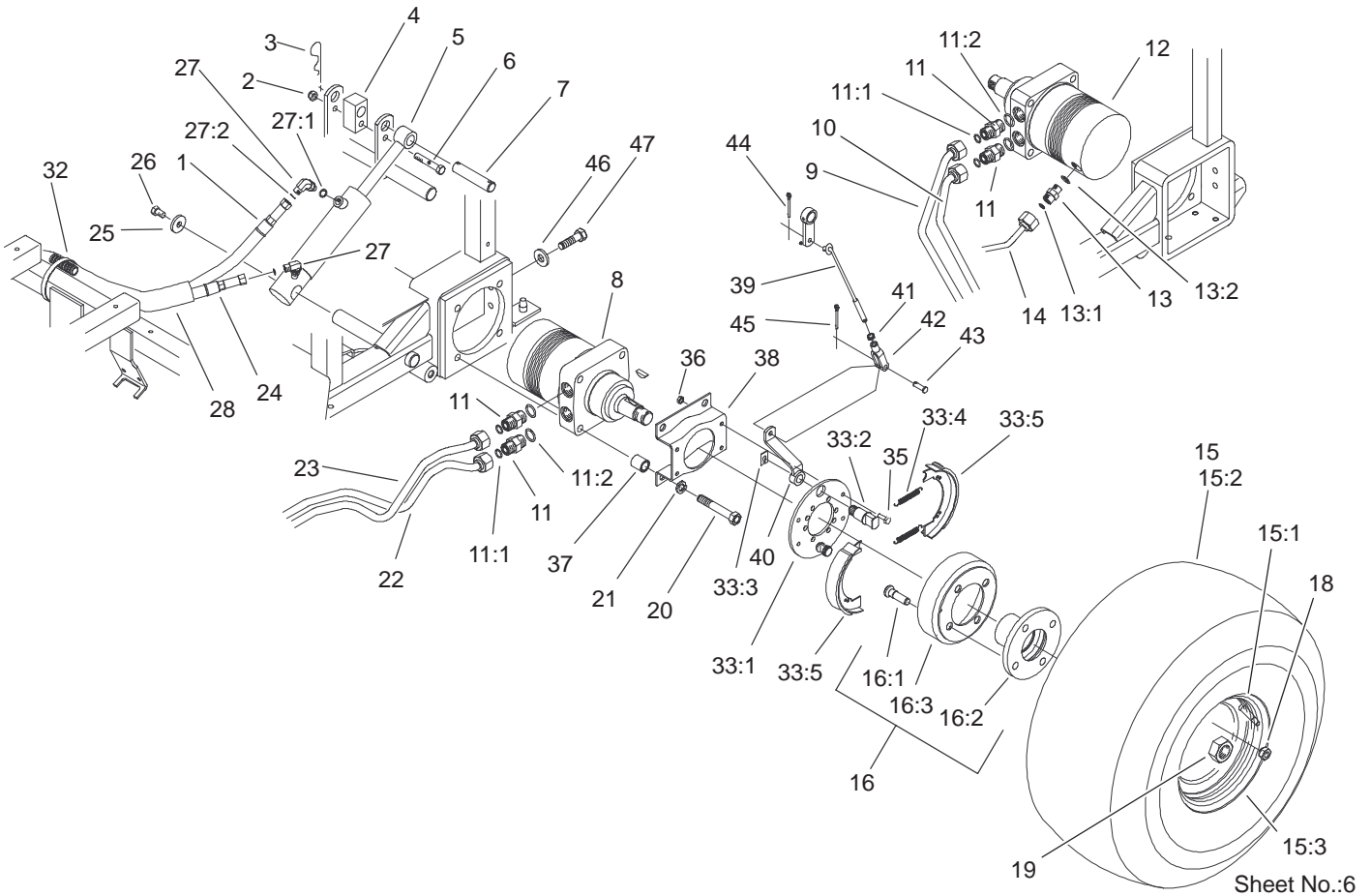
Sheet No.:A1
T-3835

Hydraulic Motor Assembly No. 98-0958

| Ref. No. | Part No. | Qty. | Description |
|----------|----------|------|-------------------|
| 11 | 76-0860 | 1 | Shaft-Coupling |
| 12 | 76-0850 | 1 | Bearing-Thrust |
| ☆13 | | 1 | Link-Drive |
| ☆14 | | 7 | Screw-HH |
| 17 | 3257-42 | 1 | Key-Woodruff |
| 18 | 76-0870 | 1 | Plate-Wear |
| ☆19 | | 1 | Rotor |
| ☆20 | | 7 | Vane |
| ☆21 | | 1 | Stator |
| ☆22 | | 1 | Manifold |
| 24 | 76-0940 | 1 | End Cover ASM |
| ☆25 | | 1 | Rotor Set |
| 26 | 76-0880 | 1 | Commutator ASM |
| ☆26:1 | | 1 | Seal-Commutator |
| ☆26:2 | | 1 | Commutator |
| ☆26:3 | | 1 | Ring-Commutator |
| 27 | 94-8178 | 1 | Kit-Seal |
| ☆27:1 | | 1 | Seal-Dirt & Water |
| ☆27:2 | | 1 | Washer-Backup |
| ☆27:3 | | 5 | Seal-Ring |
| ☆27:4 | | 1 | Washer-Backup |
| ☆27:5 | | 1 | Seal-Inner |
| ☆27:6 | | 1 | Seal-Commutator |
| 28 | 76-0810 | 1 | Housing ASM |
| ☆28:1 | | 1 | Bearing |
| ☆28:2 | | 1 | Housing |

| Ref. No. | Part No. | Qty. | Description |
|----------|----------|------|----------------|
| ☆28:3 | | 2 | Washer-Thrust |
| ☆28:4 | | 1 | Bearing-Thrust |
| ☆28:5 | | 1 | Bearing |

☆ Not serviced separately

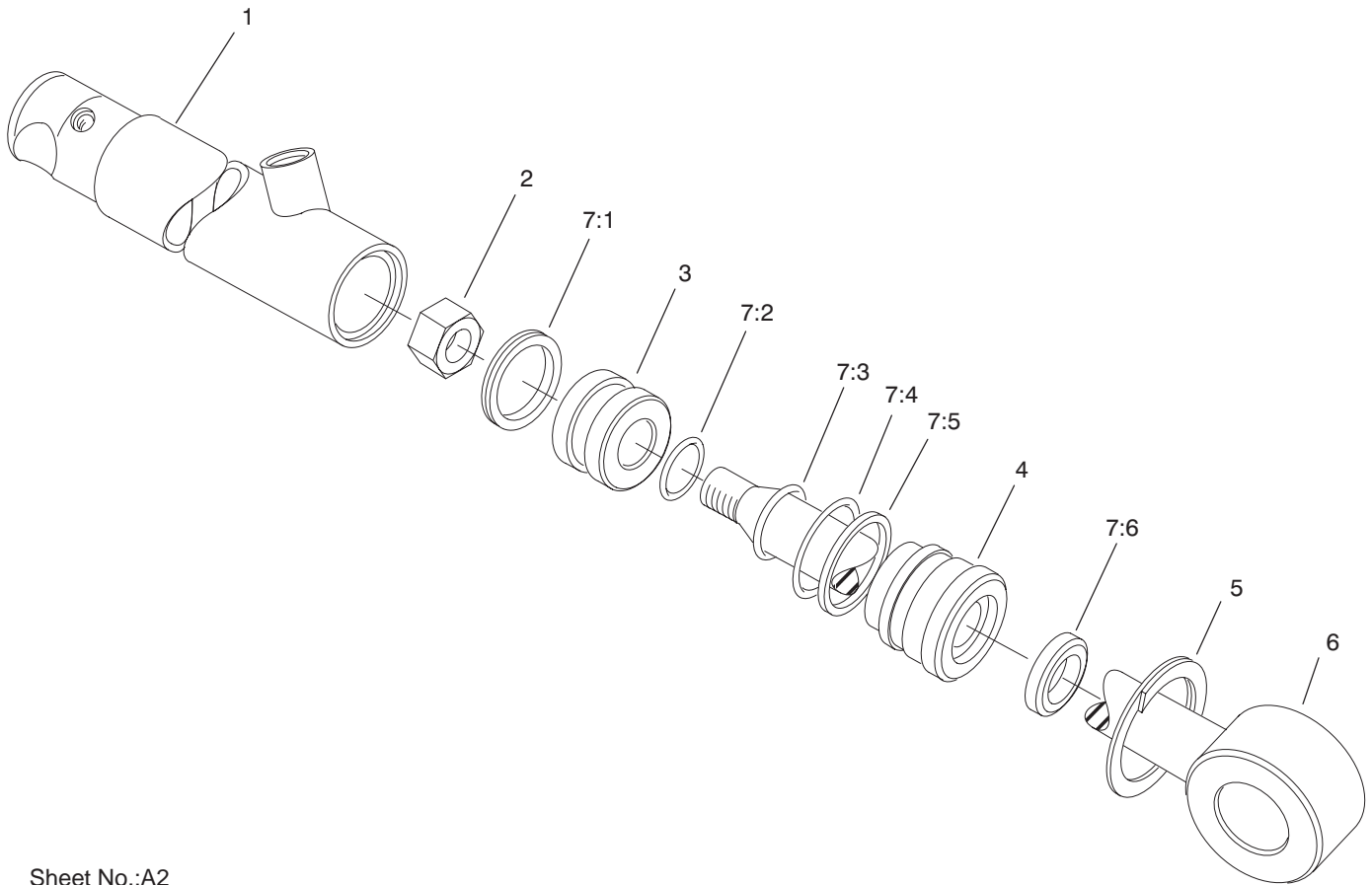


Rear Wheel and Lift Assembly

| Ref. No. | Part No. | Qty. | Description |
|----------|------------|------|-----------------------|
| 1 | 85-9570 | 1 | Hose-HYD |
| 2 | 3296-39 | 1 | Nut-Lock, NI |
| 3 | 3290-256 | 2 | Pin-Hair |
| 4 | 85-9160-03 | 1 | Spacer-Pin, Lift |
| 5 | 83-7000 | 1 | HYD Cylinder ASM |
| 6 | 323-11 | 1 | Screw-HH |
| 7 | 85-9170 | 1 | Pin-Cylinder |
| 8 | 97-3055 | 1 | Motor-Hydraulic |
| 9 | 98-0934 | 1 | Top RH Tube ASM |
| 10 | 98-0935 | 1 | Tube-Bottom Rear, RH |
| 11 | 340-6 | 4 | Fitting-Straight, HYD |
| 11:1 | 237-30 | 1 | O-Ring |
| 11:2 | 237-80 | 1 | O-Ring |
| 12 | 98-0959 | 1 | Motor-Hydraulic |
| 13 | 340-2 | 1 | Fitting-HYD, Straight |
| 13:1 | 237-22 | 1 | O-Ring |
| 13:2 | 237-42 | 1 | O-Ring |
| 14 | 98-0988 | 1 | Tube-Hydraulic |
| ☆15 | | 2 | Wheel & Tire ASM |
| 15:1 | 232-35 | 1 | Stem-Valve |
| 15:2 | 85-8290 | 1 | Tire |
| 15:3 | 94-6116 | 1 | Wheel-Rear |
| 16 | 17-8149 | 2 | Wheel Hub ASM |
| 16:1 | 85-6540 | 4 | Stud-Drive |
| 16:2 | 93-6838-03 | 1 | Hub-Wheel |

| Ref. No. | Part No. | Qty. | Description |
|----------|------------|------|-------------------|
| 16:3 | 10-6850 | 1 | Drum-Brake |
| 18 | 242-50 | 8 | Nut-Lug |
| 19 | 26-3790 | 2 | Nut-Lock |
| 20 | 325-13 | 8 | Screw-HH |
| 21 | 3253-7 | 8 | Washer-Lock |
| 22 | 98-0937 | 1 | Tube-Bottom, LH |
| 23 | 98-0936 | 1 | Tube-Rear Top, RH |
| 24 | 85-9580 | 1 | Hose-HYD |
| 25 | 53-6380 | 1 | Washer |
| 26 | 323-34 | 1 | Screw-HH |
| 27 | 340-132 | 2 | Fitting-HYD, 90° |
| 27:1 | 237-78 | 1 | O-Ring |
| 27:2 | 237-21 | 1 | O-Ring |
| 28 | 56-7981 | 1 | Sleeve-Protective |
| 32 | 3334-945 | 1 | Tie-Cable |
| 33 | 104-7705 | 2 | Brake ASM |
| 33:1 | 70-9870 | 1 | Plate-Backing |
| 33:2 | 104-7707 | 1 | Shaft-Cam, Brake |
| 33:3 | 104-7706 | 1 | E-Ring, Bowed |
| 33:4 | 70-9880 | 2 | Spring-Return |
| 33:5 | 70-9840 | 2 | Shoe-Brake |
| 35 | 321-4 | 8 | Screw-HH |
| 36 | 3296-42 | 8 | Nut-Lock, NI |
| 37 | 92-1715 | 8 | Spacer |
| 38 | 84-2000-03 | 2 | Bracket-Brake |
| 39 | 95-5824 | 2 | Rod-Adjustment |

☆ Not serviced separately



Sheet No.:A2

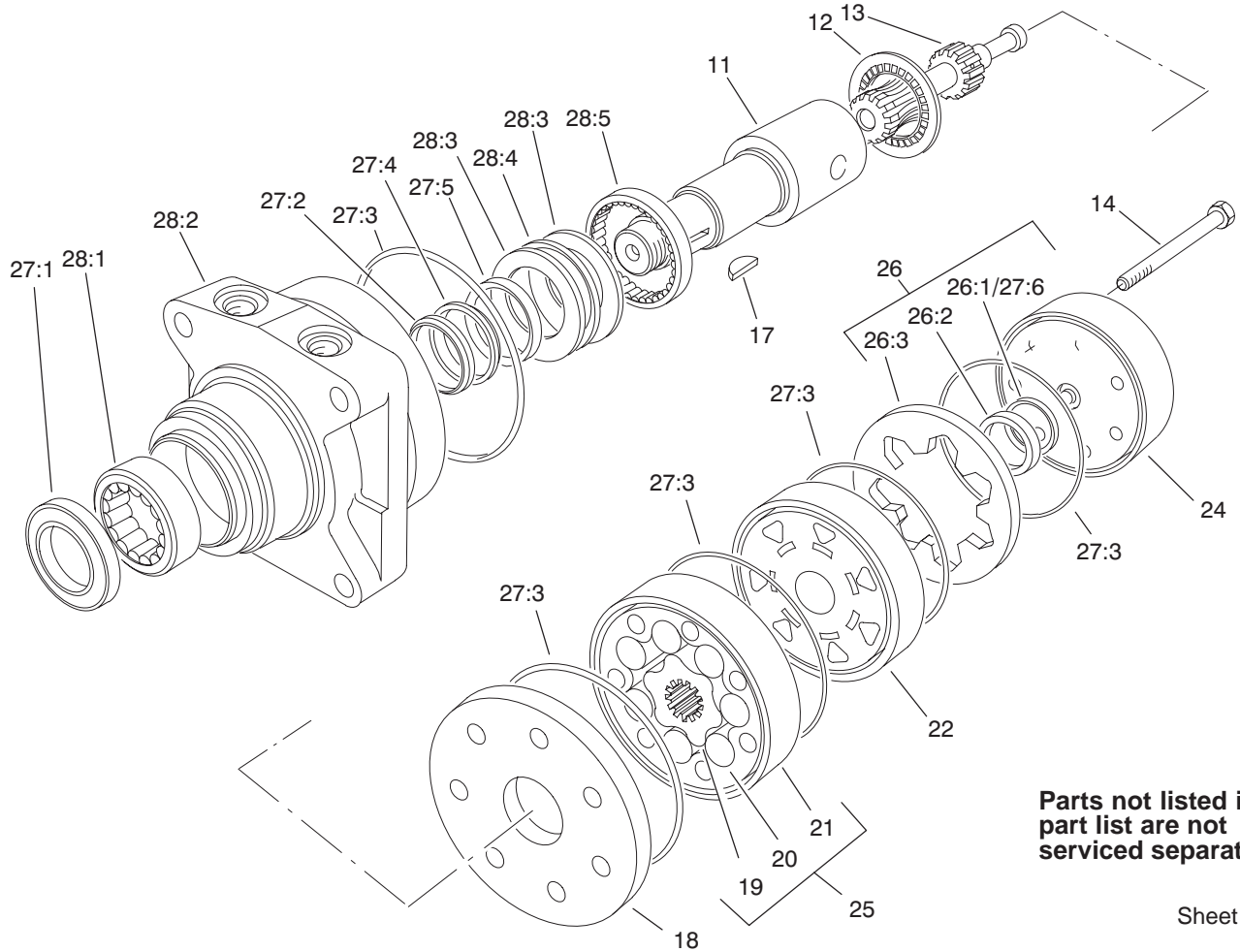
T-0217

Hydraulic Cylinder Assembly No. 83-7000

| Ref. No. | Part No. | Qty. | Description |
|----------|----------|------|-----------------|
| ☆1 | | 1 | Barrel ASM |
| 2 | 32152-10 | 1 | Locknut |
| 3 | 70-2780 | 1 | Piston |
| 4 | 70-2770 | 1 | Head |
| 5 | 43-5220 | 1 | Ring-Retaining |
| 6 | 43-5230 | 1 | Shaft W/Clevis |
| 7 | 86-5360 | 1 | Seal Repair Kit |
| ☆7:1 | | 1 | Uniring-Grooved |
| ☆7:2 | | 1 | O-Ring |
| ☆7:3 | | 1 | Pdf Ultrathane |
| ☆7:4 | | 1 | O-Ring |
| ☆7:5 | | 1 | Back-Up |
| ☆7:6 | | 1 | Seal-Dust |

| Ref. No. | Part No. | Qty. | Description |
|----------|----------|------|-------------|
| | | | |
| | | | |
| | | | |
| | | | |
| | | | |
| | | | |
| | | | |
| | | | |
| | | | |
| | | | |

☆ Not serviced separately



Parts not listed in part list are not serviced separately

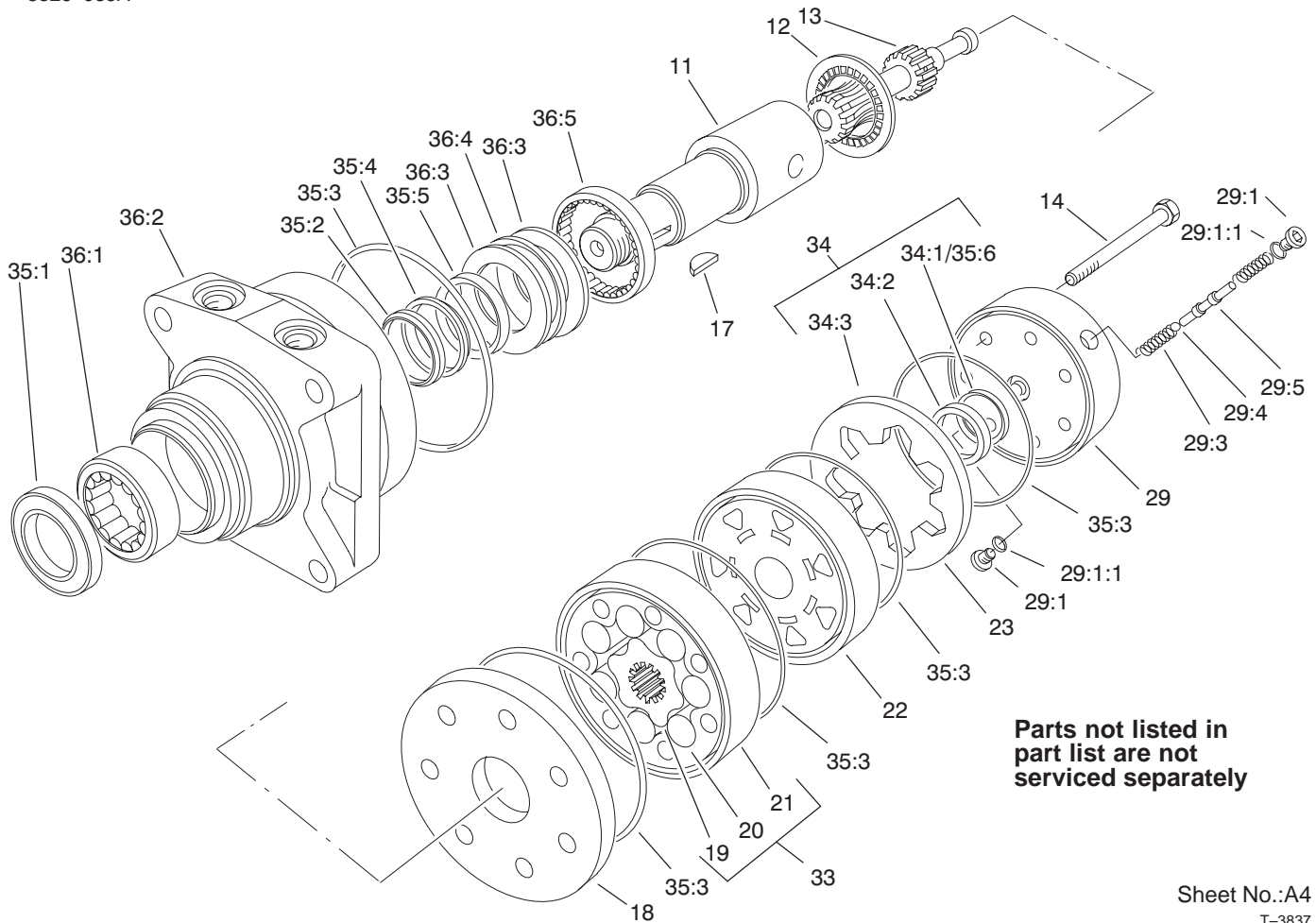
Sheet No.:A3
T-3836

Hydraulic Motor Assembly No. 97-3055

| Ref. No. | Part No. | Qty. | Description |
|----------|----------|------|-------------------|
| 11 | 76-0860 | 1 | Shaft-Coupling |
| 12 | 76-0850 | 1 | Bearing-Thrust |
| ☆13 | | 1 | Link-Drive |
| ☆14 | | 7 | Screw-HH |
| 17 | 3257-42 | 1 | Key-Woodruff |
| 18 | 76-0870 | 1 | Plate-Wear |
| ☆19 | | 1 | Rotor |
| ☆20 | | 7 | Vane |
| ☆21 | | 1 | Stator |
| 22 | 76-0840 | 1 | Manifold |
| 24 | 76-0940 | 1 | End Cover ASM |
| ☆25 | | 1 | Rotor Set |
| 26 | 76-0880 | 1 | Commutator ASM |
| ☆26:1 | | 1 | Seal-Commutator |
| ☆26:2 | | 1 | Commutator |
| ☆26:3 | | 1 | Ring-Commutator |
| 27 | 94-8178 | 1 | Kit-Seal |
| ☆27:1 | | 1 | Seal-Dirt & Water |
| ☆27:2 | | 1 | Washer-Backup |
| ☆27:3 | | 5 | Seal-Ring |
| ☆27:4 | | 1 | Washer-Backup |
| ☆27:5 | | 1 | Seal-Inner |
| ☆27:6 | | 1 | Seal-Commutator |
| 28 | 76-0810 | 1 | Housing ASM |
| ☆28:1 | | 1 | Bearing |

| Ref. No. | Part No. | Qty. | Description |
|----------|----------|------|----------------|
| ☆28:2 | | 1 | Housing |
| ☆28:3 | | 2 | Washer-Thrust |
| ☆28:4 | | 1 | Bearing-Thrust |
| ☆28:5 | | 1 | Bearing |

☆ Not serviced separately



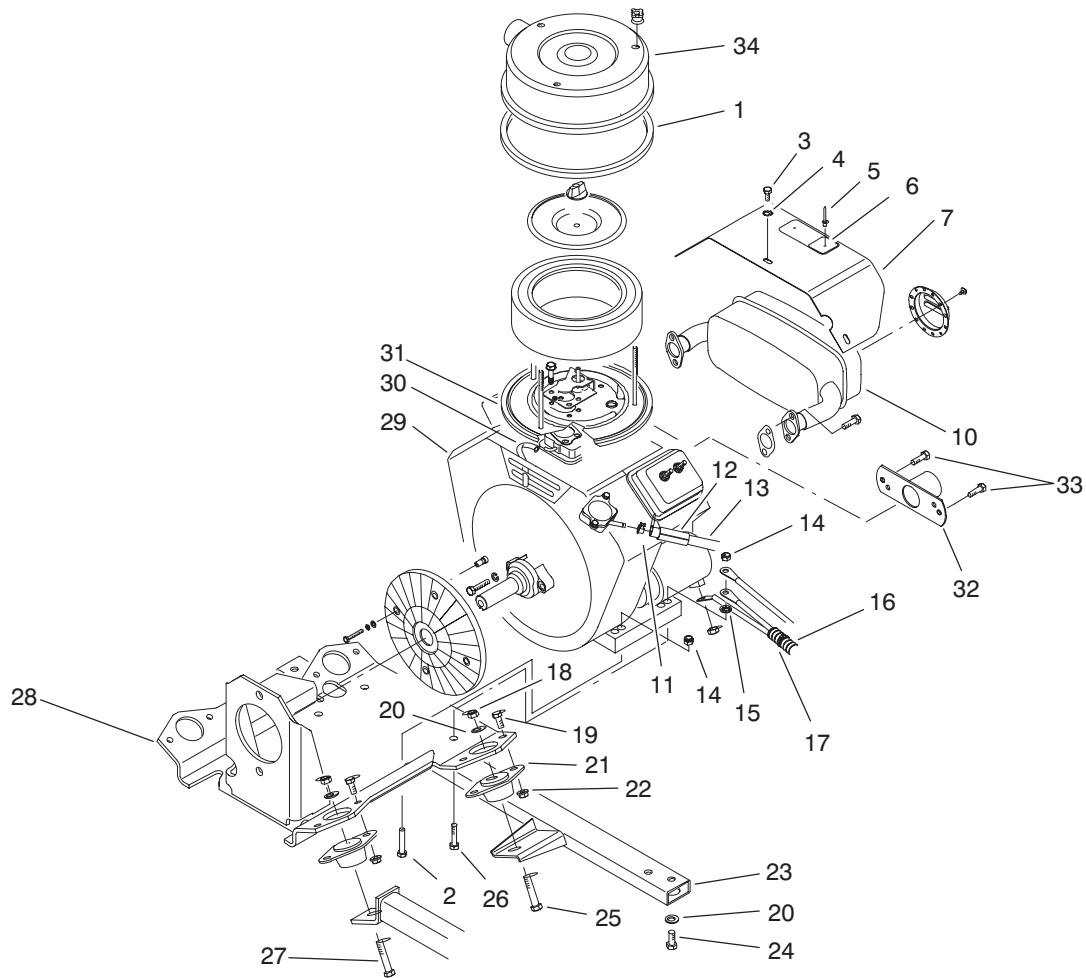
Sheet No.:A4
T-3837

Hydraulic Motor Assembly No. 98-0959

| Ref. No. | Part No. | Qty. | Description |
|----------|----------|------|-------------------|
| 11 | 76-0860 | 1 | Shaft-Coupling |
| 12 | 76-0850 | 1 | Bearing-Thrust |
| ☆13 | | 1 | Link-Drive |
| ☆14 | | 7 | Screw-HH |
| 17 | 3257-42 | 1 | Key-Woodruff |
| 18 | 76-0870 | 1 | Plate-Wear |
| ☆19 | | 1 | Rotor |
| ☆20 | | 7 | Vane |
| ☆21 | | 1 | Stator |
| ☆22 | | 1 | Manifold |
| 29 | 76-0890 | 1 | End Cover ASM |
| 29:1 | 353-990 | 2 | Plug |
| ☆29:3 | | 2 | Spring |
| ☆29:4 | | 1 | Ball |
| ☆29:5 | | 1 | Valve-Shuttle |
| ☆33 | | 1 | Rotor Set |
| 34 | 76-0880 | 1 | Commutator ASM |
| ☆34:1 | | 1 | Seal-Commutator |
| ☆34:2 | | 1 | Commutator |
| ☆34:3 | | 1 | Ring-Commutator |
| 35 | 94-8178 | 1 | Kit-Seal |
| ☆35:1 | | 1 | Seal-Dirt & Water |
| ☆35:2 | | 1 | Washer-Backup |
| ☆35:3 | | 5 | Seal-Ring |
| ☆35:4 | | 1 | Washer-Backup |
| ☆35:5 | | 1 | Seal-Inner |

| Ref. No. | Part No. | Qty. | Description |
|----------|----------|------|-----------------|
| ☆35:6 | | 1 | Seal-Commutator |
| 36 | 76-0810 | 1 | Housing ASM |
| ☆36:1 | | 1 | Bearing |
| ☆36:2 | | 1 | Housing |
| ☆36:3 | | 2 | Washer-Thrust |
| ☆36:4 | | 1 | Bearing-Thrust |
| ☆36:5 | | 1 | Bearing |

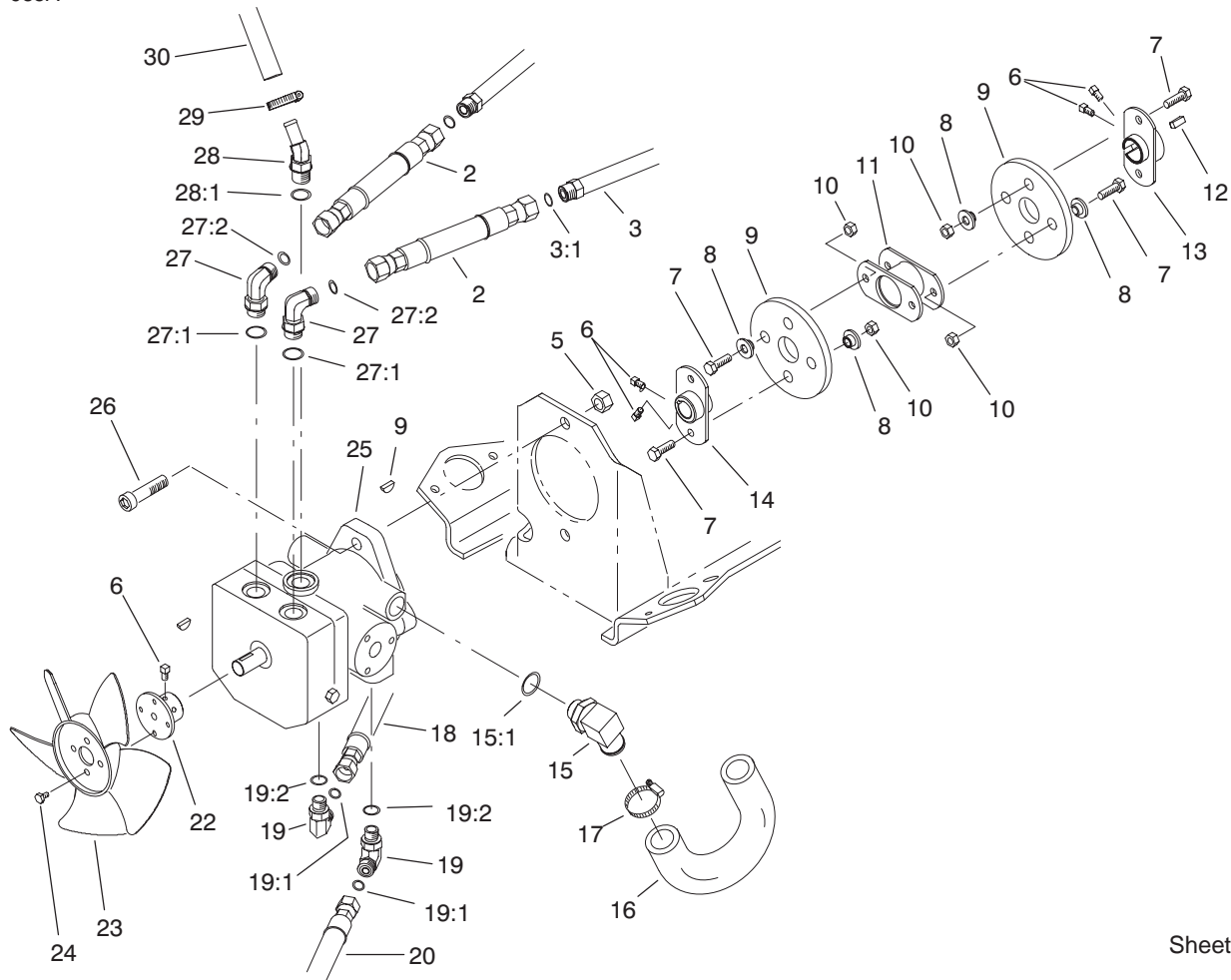
☆ Not serviced separately



Sheet No.:9

Engine Installation Assembly

| Ref. No. | Part No. | Qty. | Description | Ref. No. | Part No. | Qty. | Description |
|----------|------------|------|-----------------------|----------|------------|------|--------------------|
| 1 | 85-8360 | 1 | Gasket-Ring | 29 | 98-0930 | 1 | Engine-18 HP |
| 2 | 322-8 | 2 | Screw-HH | 30 | 75-4705 | 1 | Hose-Fuel |
| 3 | 33113-008 | 3 | Screw-HH | 31 | 85-8430-03 | 1 | Base-Cleaner, Air |
| 4 | 3255-7 | 3 | Washer-Lock/Ext | 32 | 95-0632-03 | 1 | Cover ASM |
| 5 | 3269-32 | 2 | Rivet-Pop | 33 | 3210-2 | 2 | Screw-HH |
| 6 | 95-0645 | 1 | Plate-Surface, Hot | 34 | 98-0953-03 | 1 | Cover-Cleaner, Air |
| 7 | 95-5827-03 | 1 | Shield-Muffler | | | | |
| 10 | 98-0960 | 1 | Muffler-Inlet, Dual | | | | |
| 11 | 2412-98 | 1 | Clamp | | | | |
| 12 | 38-3400 | 1 | Guard-Rubber | | | | |
| 13 | 47-2964 | 1 | Hose-Gas | | | | |
| 14 | 3296-29 | 4 | Nut-Lock, NI | | | | |
| 15 | 3254-2 | 1 | Washer-Lock, Internal | | | | |
| 16 | 94-4519 | 1 | Tube-Convolute | | | | |
| 17 | 3290-378 | 4 | Tie-Cable | | | | |
| 18 | 3296-39 | 4 | Nut-Lock, NI | | | | |
| 19 | 322-4 | 8 | Screw-HH | | | | |
| 20 | 3256-24 | 8 | Washer-Flat | | | | |
| 21 | 83-1031 | 4 | Mount-Engine | | | | |
| 22 | 3296-29 | 8 | Nut-Lock, NI | | | | |
| 23 | 85-8600-01 | 1 | Support-Engine | | | | |
| 24 | 323-5 | 4 | Screw-HH | | | | |
| 25 | 323-10 | 2 | Screw-HH | | | | |
| 26 | 322-10 | 2 | Screw-HH | | | | |
| 27 | 323-11 | 2 | Screw-HH | | | | |
| 28 | 85-8640-03 | 1 | Base-Engine | | | | |

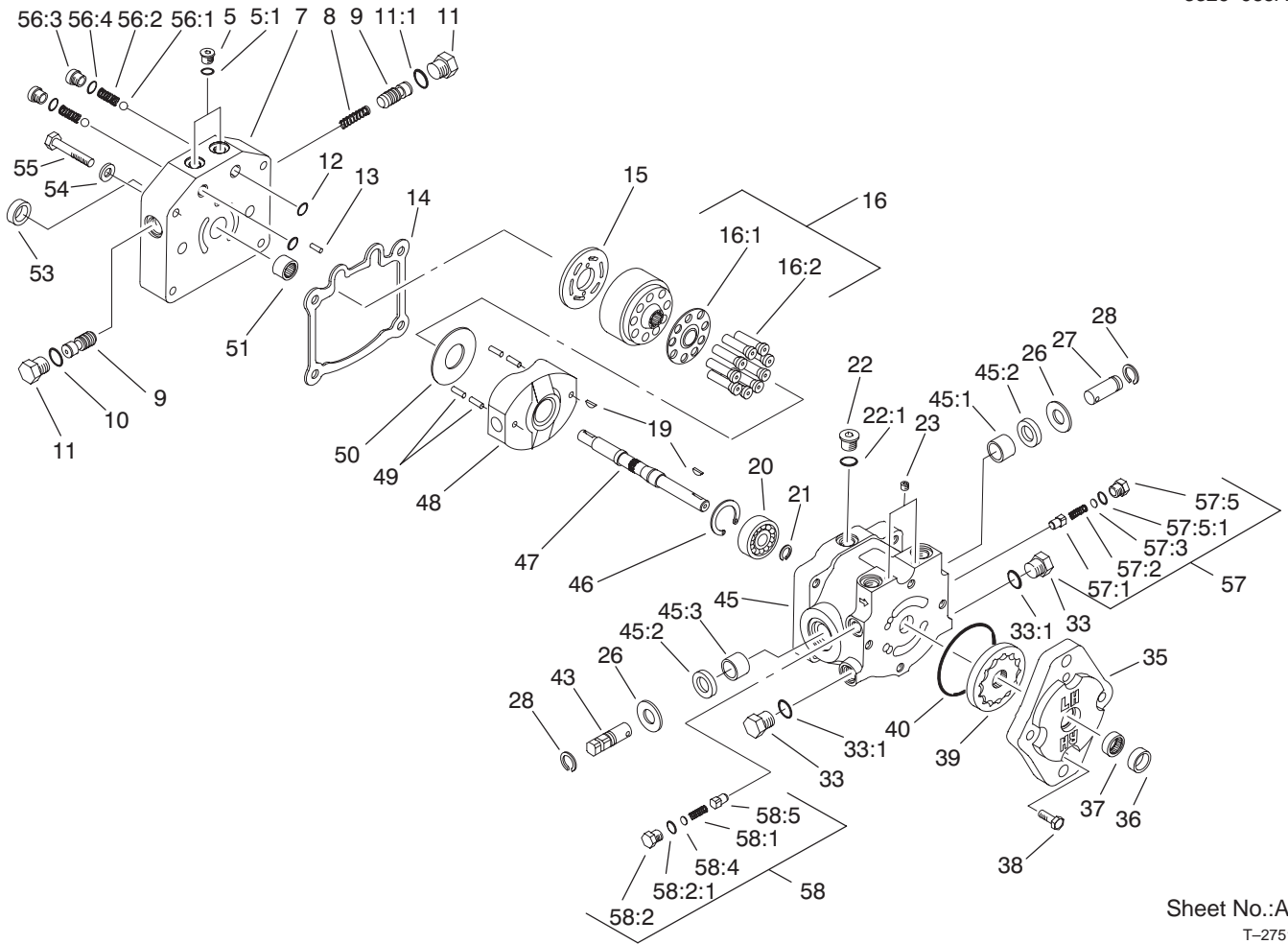


Sheet No.:10

Hydraulic Pump Installation Assembly

| Ref. No. | Part No. | Qty. | Description |
|----------|----------|------|--------------------------|
| 2 | 85-9610 | 2 | Hose-HYD |
| 3 | 98-0938 | 1 | Pump Reserve Tube ASM |
| 3:1 | 237-30 | 1 | O-Ring |
| 5 | 3296-23 | 2 | Nut-Lock, NI |
| 6 | 3241-5 | 6 | Screw-Set |
| 7 | 322-4 | 8 | Screw-HH |
| 8 | 27-6600 | 8 | Spacer-Coupling |
| 9 | 80-8650 | 2 | Coupling-Drive |
| 10 | 3296-29 | 8 | Nut-Lock, NI |
| 11 | 85-8770 | 1 | Coupling |
| 12 | 85-9020 | 1 | Key-Square |
| 13 | 85-8730 | 1 | Hub-Engine |
| 14 | 85-8700 | 1 | Hub-Pump |
| 15 | 95-0629 | 1 | Fitting-Hose, Push On |
| 15:1 | 237-80 | 1 | O-Ring |
| 16 | 98-0969 | 1 | Hose-Inlet, Pump |
| 17 | 2412-129 | 1 | Clamp-Hose |
| 18 | 98-0989 | 1 | Hose-HYD |
| 19 | 340-77 | 2 | Fitting-HYD, 90° |
| 19:1 | 237-22 | 1 | O-Ring |
| 19:2 | 237-42 | 1 | O-Ring |
| 20 | 85-9590 | 1 | Hose-HYD |
| 22 | 85-8670 | 1 | Hub-Fan |
| 23 | 85-9560 | 1 | Fan |
| 24 | 104-2065 | 4 | Screw-HWH |

| Ref. No. | Part No. | Qty. | Description |
|----------|----------|------|------------------|
| 25 | 95-5842 | 1 | Pump-Hydraulic |
| 26 | 3274-5 | 2 | Screw-HSH |
| 27 | 340-98 | 2 | Fitting-HYD, 90° |
| 27:1 | 237-79 | 1 | O-Ring |
| 27:2 | 237-30 | 1 | O-Ring |
| 28 | 354-126 | 1 | Fitting-HYD, 45° |
| 28:1 | 237-79 | 1 | O-Ring |
| 29 | 2412-36 | 1 | Clamp-Hose |
| 30 | 85-9450 | 1 | Hose-Return |



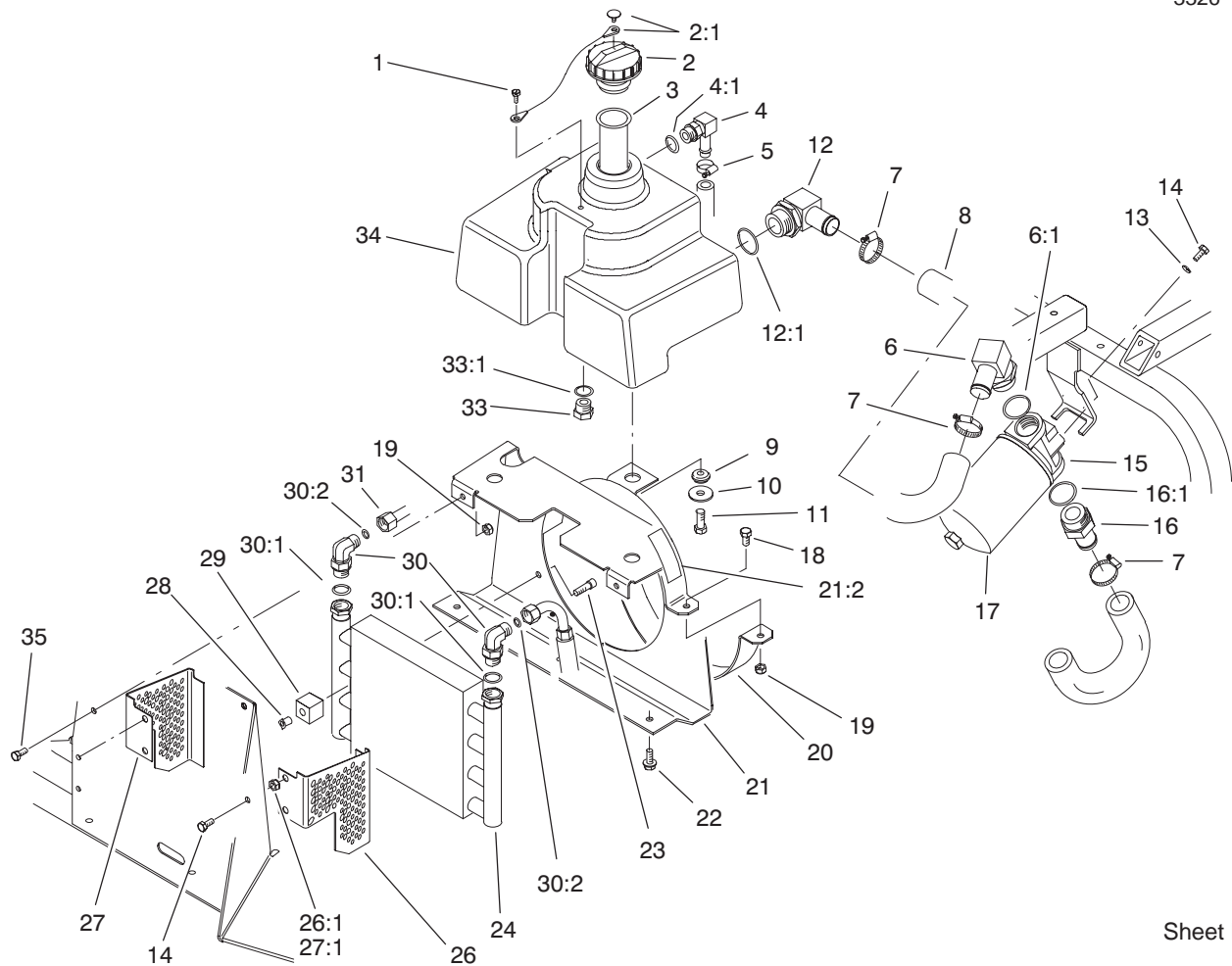
Sheet No.:A5
T-2751

Hydraulic Pump Assembly No. 95-5842

| Ref. No. | Part No. | Qty. | Description |
|----------|----------|------|----------------------|
| 5 | 92-8776 | 2 | Plug |
| 5:1 | 92-8777 | 1 | O-Ring |
| 7 | 95-5808 | 1 | Cap-End |
| 8 | 95-5815 | 1 | Spring-Valve, Accel. |
| ★9 | | 2 | Valve-Acceleration |
| 11 | 95-5816 | 2 | Plug |
| 11:1 | 237-79 | 1 | O-Ring |
| 12 | 93-4132 | 2 | O-Ring |
| 13 | 25-2430 | 1 | Pin-Dowel |
| 14 | 25-2400 | 1 | Gasket |
| 15 | 88-8160 | 1 | Plate-Valve |
| 16 | 48-1800 | 1 | Cylinder Block Kit |
| ★16:1 | | 1 | Retainer-Slipper |
| ★16:2 | | 9 | Piston ASM |
| 19 | 3257-32 | 2 | Key-Woodruff |
| 20 | 95-5809 | 1 | Bearing-Ball |
| 21 | 95-5813 | 1 | Ring-Retaining |
| 22 | 353-988 | 1 | Plug-Hex, Hollow |
| 22:1 | 237-79 | 1 | O-Ring |
| 23 | 285-17 | 2 | Plug-Pipe |
| 26 | 25-2510 | 2 | Washer-Flat |
| 27 | 25-2500 | 1 | Shaft-Trunnion |
| 28 | 32151-46 | 2 | Ring-Retaining |
| 33 | 88-8210 | 2 | Plug |
| 33:1 | 237-80 | 1 | O-Ring |
| 35 | 25-2690 | 1 | Housing-Pump, Charge |

| Ref. No. | Part No. | Qty. | Description |
|----------|----------|------|-----------------------|
| 36 | 67-8060 | 1 | Seal-Lip |
| 37 | 67-8050 | 1 | Bearing-Needle |
| 38 | 322-4 | 4 | Screw-HH |
| 39 | 95-5812 | 1 | Gerotor ASM |
| 40 | 237-95 | 1 | O-Ring |
| 43 | 88-8180 | 1 | Shaft-Trunnion |
| 45 | 88-8170 | 1 | Kit-Housing |
| 45:1 | 88-8190 | 1 | Bearing-Journal |
| 45:2 | 25-3210 | 2 | Seal-Lip |
| 45:3 | 252-82 | 1 | Bearing-Needle |
| 46 | 32120-11 | 1 | Ring-Retaining |
| 47 | 95-5810 | 1 | Shaft |
| 48 | 25-2450 | 1 | Plate-Swash, Variable |
| 49 | 32121-91 | 4 | Pin-Spring, Coil |
| 50 | 25-2380 | 1 | Plate-Thrust |
| 51 | 46-8400 | 1 | Bearing-Shaft |
| 53 | 88-8230 | 1 | Seal-Lip |
| ★54 | | 1 | Washer |
| 55 | 323-45 | 4 | Screw-HH |
| 56 | 99-5689 | 1 | Check Valve ASM |
| 56:1 | 25-2490 | 1 | Ball |
| 56:2 | 25-2640 | 1 | Spring-Valve |
| 56:3 | 25-2650 | 1 | Plug-Valve, Check |

★ Not serviced separately

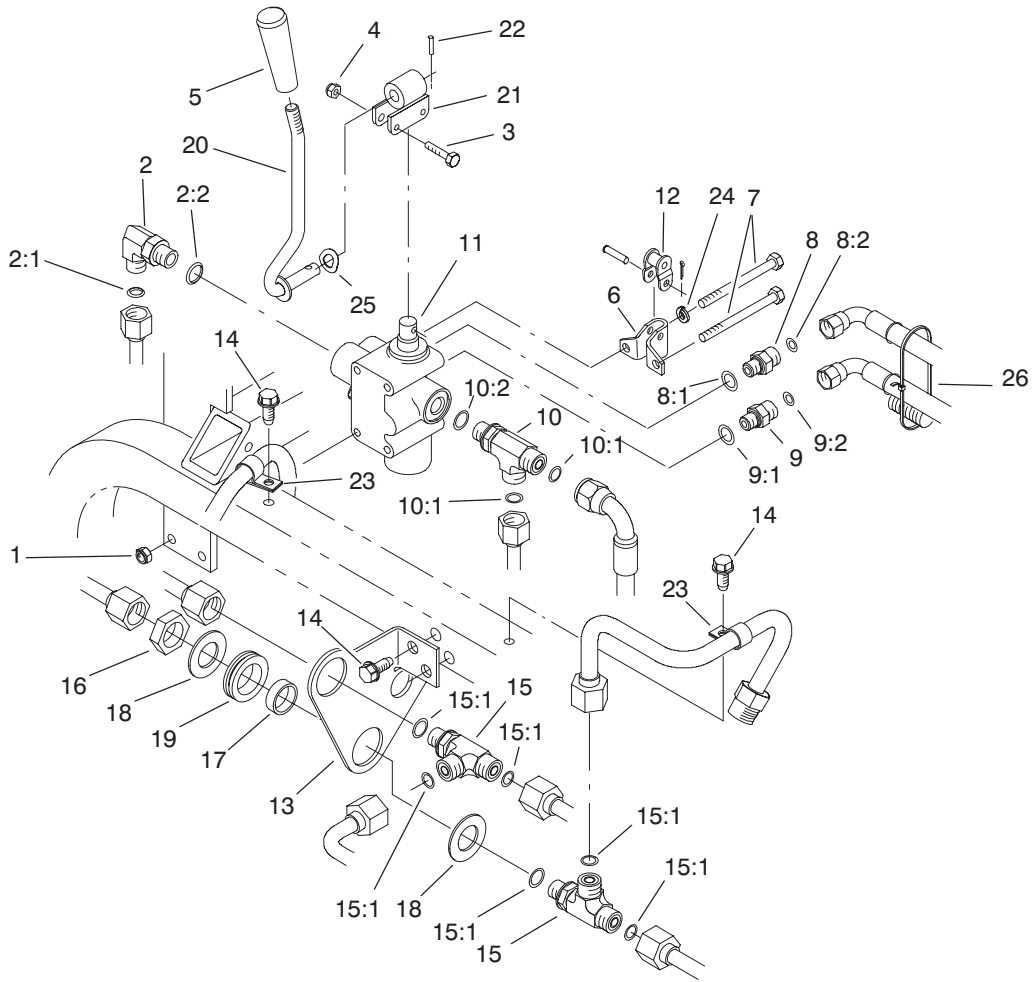


Sheet No.:11

Hydraulic Reservoir Assembly

| Ref. No. | Part No. | Qty. | Description |
|----------|------------|------|---------------------|
| 1 | 57-5420 | 1 | Screw-Shoulder |
| 2 | 93-4365 | 1 | Cap-Oil |
| 2:1 | 75-0540 | 1 | Tether & Button Kit |
| 3 | 85-9510 | 1 | Filler-Screen |
| 4 | 354-120 | 1 | Fitting-HYD, 90° |
| 4:1 | 237-79 | 1 | O-Ring |
| 5 | 2412-36 | 1 | Clamp-Hose |
| 6 | 353-987 | 1 | Fitting-HYD, 90° |
| 6:1 | 237-81 | 1 | O-Ring |
| 7 | 2412-129 | 3 | Clamp-Hose |
| 8 | 98-0970 | 1 | Hose-Filter, Inlet |
| 9 | 240-11 | 3 | Grommet-Mount, Tank |
| 10 | 63-8410 | 3 | Washer |
| 11 | 323-5 | 3 | Screw-HH |
| 12 | 98-0971 | 1 | Fitting-HYD, 90° |
| 12:1 | 237-117 | 1 | O-Ring |
| 13 | 3253-3 | 2 | Washer-Lock |
| 14 | 321-4 | 6 | Screw-HH |
| 15 | 68-8990 | 1 | Filter Head ASM |
| 16 | 354-73 | 1 | Fitting |
| 16:1 | 237-81 | 1 | O-Ring |
| 17 | 23-9740 | 1 | Filter-Oil |
| 18 | 322-2 | 2 | Screw-HH |
| 19 | 3296-29 | 4 | Nut-Lock, NI |
| 20 | 85-8570-03 | 1 | Shroud-Upper |

| Ref. No. | Part No. | Qty. | Description |
|----------|----------|------|-------------------|
| 21 | 98-8151 | 1 | Cooler Mount ASM |
| 21:2 | 93-7272 | 2 | Decal-Warning |
| 22 | 32144-11 | 3 | Screw-TAP |
| 23 | 3274-86 | 2 | Screw-HSH |
| 24 | 85-9460 | 1 | Cooler-Oil |
| 26 | 88-8120 | 1 | Screen-Cooler, LH |
| 26:1 | 32148-6 | 2 | Nut-Insert |
| 27 | 88-8110 | 1 | Screen-Cooler, RH |
| 27:1 | 32148-6 | 2 | Nut-Insert |
| 28 | 85-9670 | 2 | Nut |
| 29 | 85-9550 | 2 | Clamp-Rubber |
| 30 | 340-18 | 2 | Fitting-HYD, 90° |
| 30:1 | 237-79 | 1 | O-Ring |
| 30:2 | 237-22 | 1 | O-Ring |
| 31 | 98-0987 | 1 | Tube |
| 33 | 353-550 | 1 | Plug-HYD |
| 33:1 | 237-79 | 1 | O-Ring |
| 34 | 92-8959 | 1 | Tank-Hydraulic |
| 35 | 322-3 | 2 | Screw-HH |

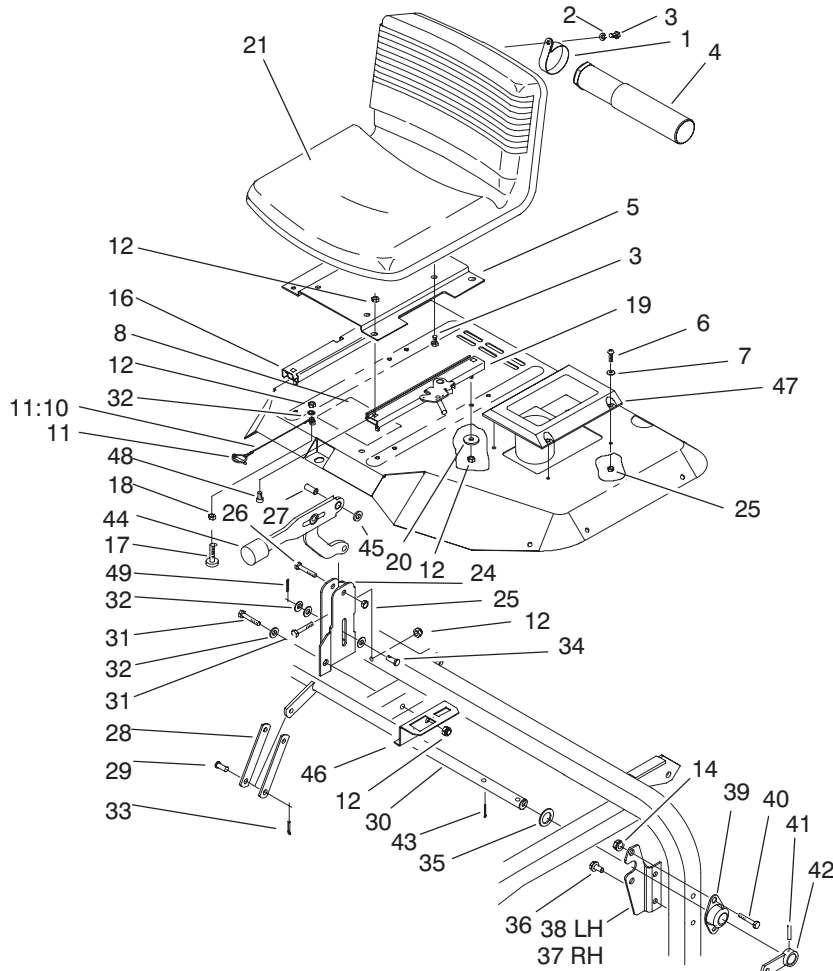


Sheet No.:12

Hydraulic Plumbing Assembly

| Ref. No. | Part No. | Qty. | Description |
|----------|------------|------|-----------------------|
| 1 | 3296-8 | 3 | Nut-Lock NI |
| 2 | 340-77 | 1 | Fitting-HYD, 90° |
| 2:1 | 237-22 | 1 | O-Ring |
| 2:2 | 237-42 | 1 | O-Ring |
| 3 | 3290-360 | 2 | Screw-HH |
| 4 | 3296-2 | 2 | Nut-Lock |
| 5 | 233-39 | 1 | Knob-Control |
| 6 | 88-8480 | 1 | Bracket-Pivot |
| 7 | 321-23 | 4 | Screw-HH |
| 8 | 85-9720 | 1 | Fitting-Orificed |
| 8:1 | 237-78 | 1 | O-Ring |
| 8:2 | 237-21 | 1 | O-Ring |
| 9 | 340-92 | 1 | Fitting-Straight, HYD |
| 9:1 | 237-78 | 1 | O-Ring |
| 9:2 | 237-21 | 1 | O-Ring |
| 10 | 340-86 | 1 | Fitting-Tee, HYD |
| 10:1 | 237-22 | 2 | O-Ring |
| 10:2 | 237-42 | 1 | O-Ring |
| 11 | 43-1710-01 | 1 | Valve ASM |
| 12 | 2710-20 | 1 | Link-Offset |
| 13 | 98-0963-01 | 1 | Bracket-Bulkhead |
| 14 | 32144-11 | 4 | Screw-TAP |
| 15 | 340-121 | 2 | Fitting-Tee, HYD |
| 15:1 | 237-30 | 3 | O-Ring |
| 16 | 340-127 | 2 | Nut-Bulkhead |
| 17 | 69-8960 | 2 | Spacer |

| Ref. No. | Part No. | Qty. | Description |
|----------|----------|------|----------------|
| 18 | 69-8930 | 4 | Washer |
| 19 | 240-5 | 2 | Grommet |
| 20 | 99-1632 | 1 | Lift Lever ASM |
| 21 | 98-8159 | 1 | Pivot |
| 22 | 32121-73 | 1 | Pin-Roll |
| 23 | 2412-138 | 2 | R-Clamp |
| 24 | 3253-3 | 1 | Washer-Lock |
| 25 | 3290-477 | 1 | Washer-Curved |
| 26 | 3290-378 | 1 | Tie-Cable |

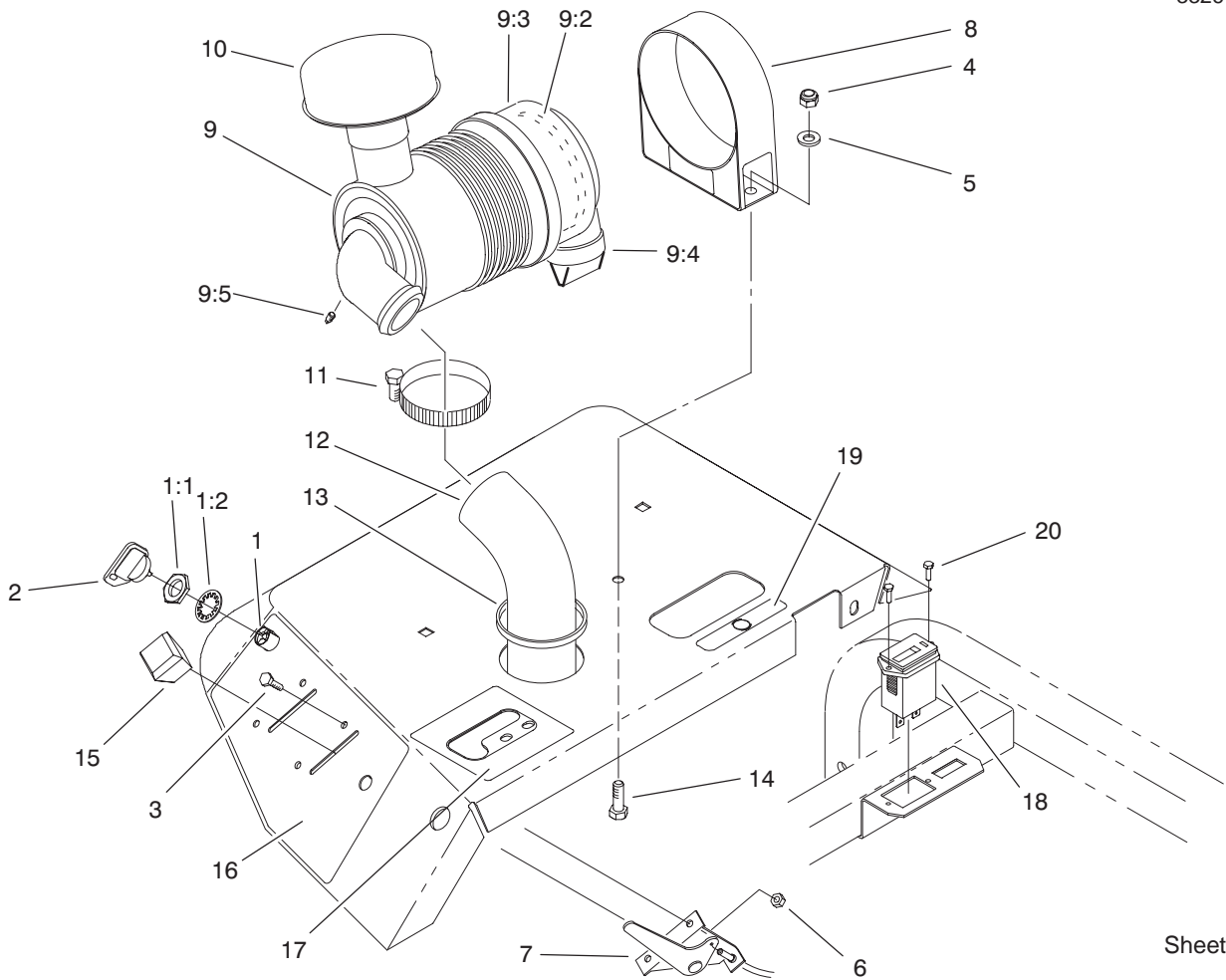


Sheet No.:13

Seat and Brake Assembly

| Ref. No. | Part No. | Qty. | Description |
|----------|------------|------|-------------------------|
| 1 | 2412-133 | 2 | R-Clamp |
| 2 | 3253-4 | 2 | Washer-Lock |
| 3 | 322-2 | 6 | Screw-HH |
| 4 | 74-0720 | 1 | Tube-Manual |
| 5 | 85-9660-03 | 1 | Plate-Adjustment, Seat |
| 6 | 3258-166 | 4 | Screw |
| 7 | 3256-1 | 4 | Washer-Flat |
| 8 | 98-0977 | 1 | Decal-Service |
| 11 | 98-0979 | 1 | Lynch Pin ASM |
| 11:10 | 28-8070 | 1 | Lanyard |
| 12 | 3296-29 | 12 | Nut-Lock, NI |
| 14 | 3296-39 | 4 | Nut-Lock, NI |
| 16 | 51-0780 | 1 | Slider-Seat |
| 17 | 32141-36 | 2 | Screw-Adjustment, Level |
| 18 | 3218-2 | 2 | Nut-Jam |
| 19 | 51-0790 | 1 | Adjuster-Seat, LH |
| 20 | 63-8410 | 4 | Washer |
| 21 | 92-8976 | 1 | Seat |
| 24 | 95-5823 | 1 | Bracket-Lever |
| 25 | 3296-42 | 5 | Nut-Lock, NI |
| 26 | 321-9 | 1 | Screw-HH |
| 27 | 87-4710 | 1 | Spacer-Brake, Parking |
| 28 | 95-5844 | 2 | Strap |

| Ref. No. | Part No. | Qty. | Description |
|----------|----------|------|---------------------|
| 29 | 283-62 | 1 | Pin-Clevis |
| 30 | 95-5848 | 1 | Rod-Traverse |
| 31 | 322-11 | 2 | Screw-HH |
| 32 | 3256-23 | 6 | Washer-Flat |
| 33 | 3272-10 | 1 | Pin-Cotter |
| 34 | 94-3829 | 1 | Pin-Clevis |
| 35 | 67-9410 | 2 | Washer |
| 36 | 32144-14 | 4 | Screw-HWH |
| 37 | 98-0901 | 1 | Bracket-Bearing, RH |
| 38 | 98-0900 | 1 | Bracket-Bearing, LH |
| 39 | 27-2320 | 2 | Bearing |
| 40 | 3234-1 | 4 | Screw-HHF |
| 41 | 32121-6 | 2 | Pin-Roll |
| 42 | 83-9310 | 2 | Lever-Brake, RH |
| 43 | 3272-12 | 2 | Pin-Cotter |
| 44 | 87-2710 | 1 | Lever-Brake |
| 45 | 3290-477 | 1 | Washer-Curved |
| 46 | 98-0922 | 1 | Bracket-Hourmeter |
| 47 | 69-7040 | 1 | Holder-Cup |
| 48 | 3274-12 | 4 | Screw-HSH |
| 49 | 3272-6 | 1 | Pin-Cotter |



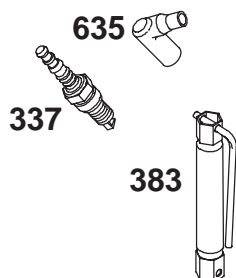
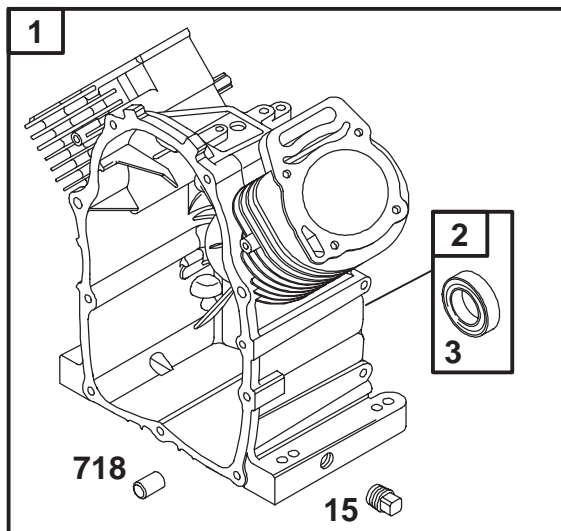
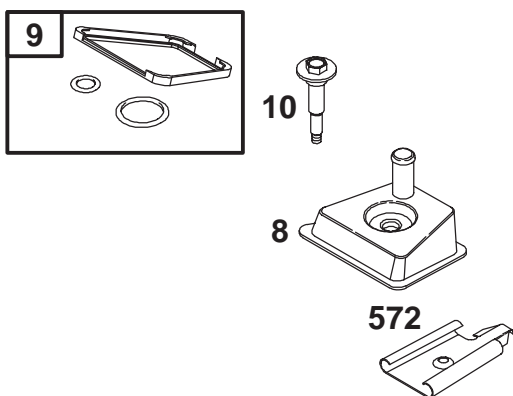
Sheet No.:14

Air Cleaner and Control Panel Assembly

| Ref. No. | Part No. | Qty. | Description |
|----------|----------|------|--------------------------|
| 1 | 83-0020 | 1 | Switch-Starter |
| 1:1 | 218-461 | 1 | Nut-HH |
| 1:2 | 3254-5 | 1 | Washer-Lock, Internal |
| 2 | 63-8360 | 2 | Key-Ignition |
| 3 | 32105-13 | 4 | Screw-SHH |
| 4 | 3296-29 | 2 | Nut-Lock, NI |
| 5 | 3256-23 | 2 | Washer-Flat |
| 6 | 3296-2 | 4 | Nut-Lock |
| 7 | 98-0991 | 2 | Control-Choke & Throttle |
| 8 | 95-5806 | 1 | Bracket-Mounting |
| 9 | 93-2190 | 1 | Air Cleaner ASM |
| 9:2 | 93-2195 | 1 | Filter |
| 9:3 | 94-3652 | 1 | Cover ASM |
| 9:4 | 94-1414 | 1 | Valve-Vacuator |
| 9:5 | 285-17 | 1 | Plug-Pipe |
| 10 | 46-7510 | 1 | Hood-Inlet, Air |
| 11 | 2412-130 | 2 | Clamp-Hose |
| 12 | 92-8977 | 1 | Hose-Cleaner, Air |
| 13 | 237-164 | 1 | Grommet |
| 14 | 322-5 | 2 | Screw-HH |
| 15 | 66-0120 | 2 | Knob |
| 16 | 98-0975 | 1 | Decal-Panel, Control |
| 17 | 98-0984 | 1 | Decal-Lift |
| 18 | 75-6820 | 1 | Hourmeter |
| 19 | 93-7442 | 1 | Decal-Lever, Parking |

| Ref. No. | Part No. | Qty. | Description |
|----------|----------|------|-------------|
| 20 | 32144-18 | 2 | Screw-HH |
| *23 | 3290-378 | 2 | Tie-Cable |

* Not illustrated



1019 LABEL KIT

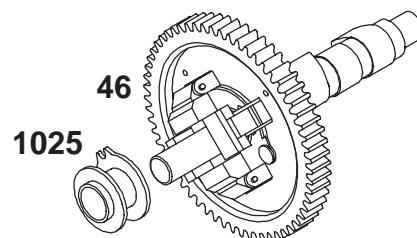
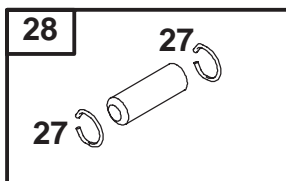
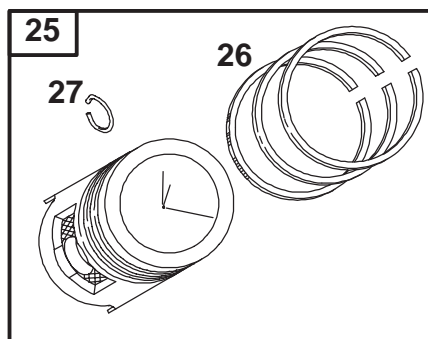
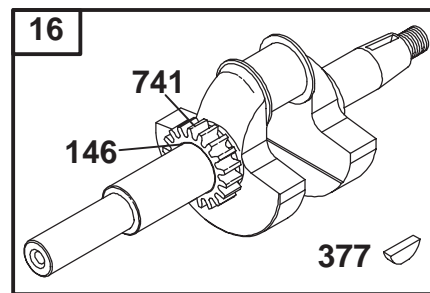
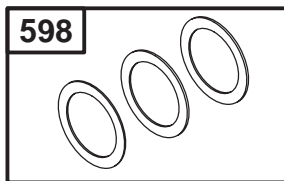
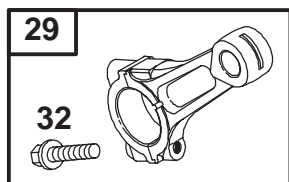
Assemblies include all parts shown in frames.

Cylinder Assembly Briggs and Stratton 350447-1116-E1

| Ref. No. | Part No. | Qty. | Description |
|----------|----------|------|------------------------------------|
| 1 | 692544 | 1 | Cylinder Assembly |
| 2 | 808534 | 1 | Kit-Bushing/Seal (Magneto Side) |
| ★3 | 805101 | 1 | Seal-Oil (Magneto Side) |
| 8 | 808984 | 1 | Breather Assembly |
| ★9 | 809094 | 1 | Gasket-Breather |
| 10 | 690751 | 1 | Screw (Breather Assembly) |
| 15 | 690946 | 1 | Plug-Oil Drain |
| 337 | 496018 | 1 | Spark Plug |
| 383 | 19374 | 1 | Wrench-Spark Plug |
| 572 | 690686 | 1 | Baffle-Breather |
| 635 | 692076 | 1 | Boot-Spark Plug |
| 718 | 806469 | 1 | Pin-Locating |
| 1019 | 808036 | 1 | Kit-Label |

| Ref. No. | Part No. | Qty. | Description |
|----------|----------|------|-------------|
| | | | |

★ Included in Engine Gasket Set-Ref. 358.

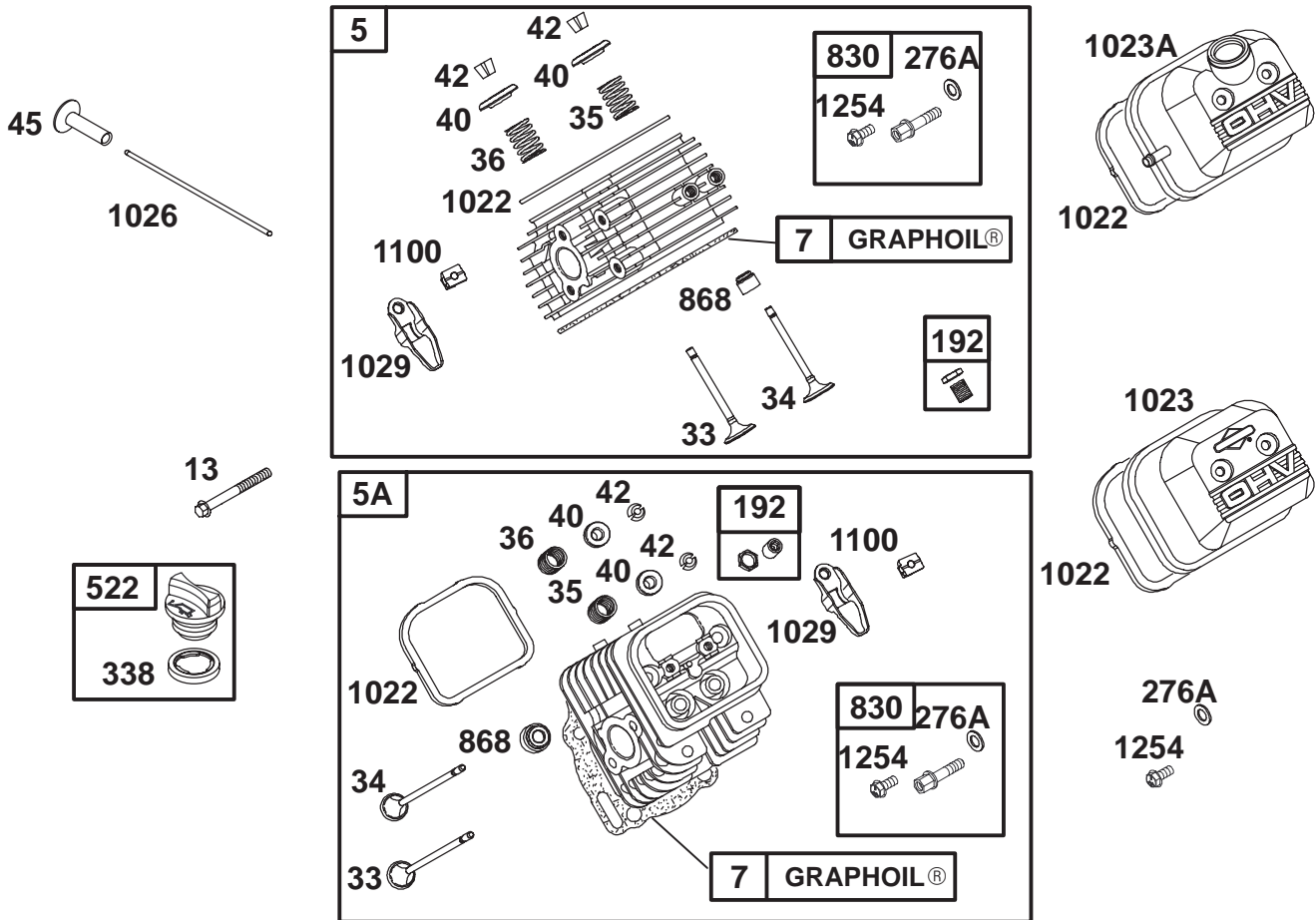


Assemblies include all parts shown in frames.

Crankshaft Assembly Briggs and Stratton 350447-1116-E1

| Ref. No. | Part No. | Qty. | Description |
|----------|----------|------|----------------------------------|
| 16 | 692089 | 1 | Crankshaft |
| 25 | 808326 | 1 | Piston Assembly (Standard) |
| | 808336 | 1 | Piston Assembly (.010" Oversize) |
| | 808337 | 1 | Piston Assembly (.020" Oversize) |
| | 808338 | 1 | Piston Assembly (.030" Oversize) |
| 26 | 807889 | 1 | Ring Set (Standard) |
| | 807994 | 1 | Ring Set (.010" Oversize) |
| | 807995 | 1 | Ring Set (.020" Oversize) |
| | 807996 | 1 | Ring Set (.030" Oversize) |
| 27 | 690683 | 1 | Lock-Piston Pin |
| 28 | 807886 | 1 | Pin-Piston |
| 29 | 807900 | 1 | Rod-Connecting (Standard) |
| | 807803 | 1 | Rod-Connecting (.020" Undersize) |

| Ref. No. | Part No. | Qty. | Description |
|----------|----------|------|------------------------|
| 32 | 690698 | 1 | Screw (Connecting Rod) |
| 46 | 691557 | 1 | Camshaft |
| 146 | 691639 | 1 | Key-Timing |
| 377 | 808095 | 1 | Key-Woodruff |
| 598 | 807625 | 1 | Shim-End Play |
| 741 | 691530 | 1 | Gear-Timing |
| 1025 | 690689 | 1 | Slider-Governor |



Assemblies include all parts shown in frames.

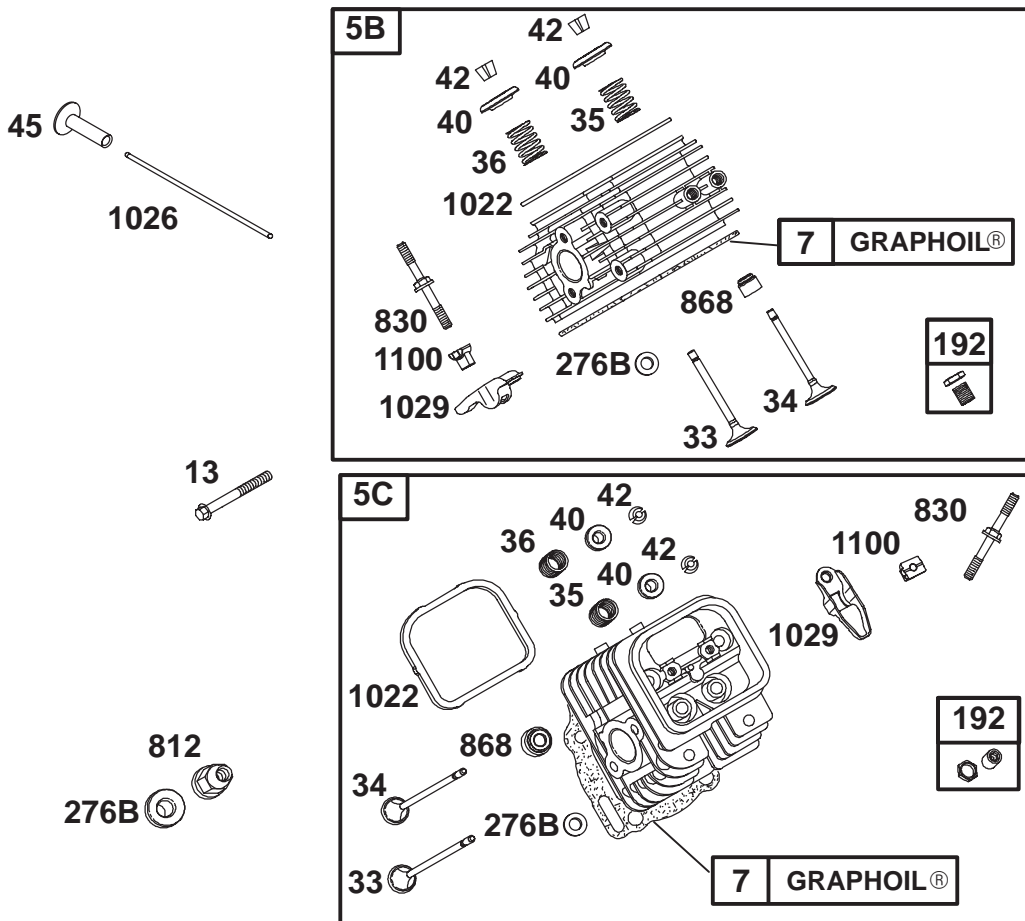
Cylinder Head Assembly Briggs and Stratton 350447-1116-E1

| Ref. No. | Part No. | Qty. | Description |
|----------|----------|------|--|
| 5 | 809185 | 1 | Head-Cylinder (Cylinder 1) (Used After Code Date 01120200) |
| 5A | 809186 | 1 | Head-Cylinder (Cylinder 2) (Used After Code Date 01120200) |
| ★Δ7 | 690888 | 1 | Gasket-Cylinder Head |
| 13 | 692059 | 1 | Screw (Cylinder Head) |
| 33 | 807681 | 1 | Valve-Exhaust |
| 34 | 807680 | 1 | Valve-Intake |
| 35 | 692084 | 1 | Spring-Valve (Intake) |
| 36 | 692084 | 1 | Spring-Valve (Exhaust) |
| 40 | 692058 | 1 | Retainer-Valve |
| 42 | 807683 | 1 | Keeper-Valve |
| 45 | 690977 | 1 | Tappet-Valve |
| 192 | 807623 | 1 | Adjuster-Rocker Arm |
| ★Δ276A | 807085 | 1 | Washer-Sealing (Used After Code Date 01120200) |

| Ref. No. | Part No. | Qty. | Description |
|----------|----------|------|---|
| 338 | 691312 | 1 | Gasket-Dipstick |
| 522 | 491832 | 1 | Plug-Dipstick/Fill |
| 830 | 809157 | 1 | Stud-Rocker Arm (Used After Code Date 01120200) |
| ★Δ868 | 691963 | 1 | Seal-Valve |
| ★Δ1022 | 806039 | 1 | Gasket-Rocker Cover |
| 1023 | 691494 | 1 | Cover-Valve |
| 1023A | 690910 | 1 | Cover-Valve |
| 1026 | 691836 | 1 | Rod-Push (Intake) |
| | 691758 | 1 | Rod-Push (Exhaust) |
| 1029 | 691543 | 1 | Arm-Rocker |
| 1100 | 690973 | 1 | Pivot-Rocker Arm |
| 1254 | 807084 | 1 | Screw (Rocker Arm Stud) (Used After Code Date 01120200) |

Δ Included in Valve Gasket Set-Ref. 1095.

★ Included in Engine Gasket Set-Ref. 358.



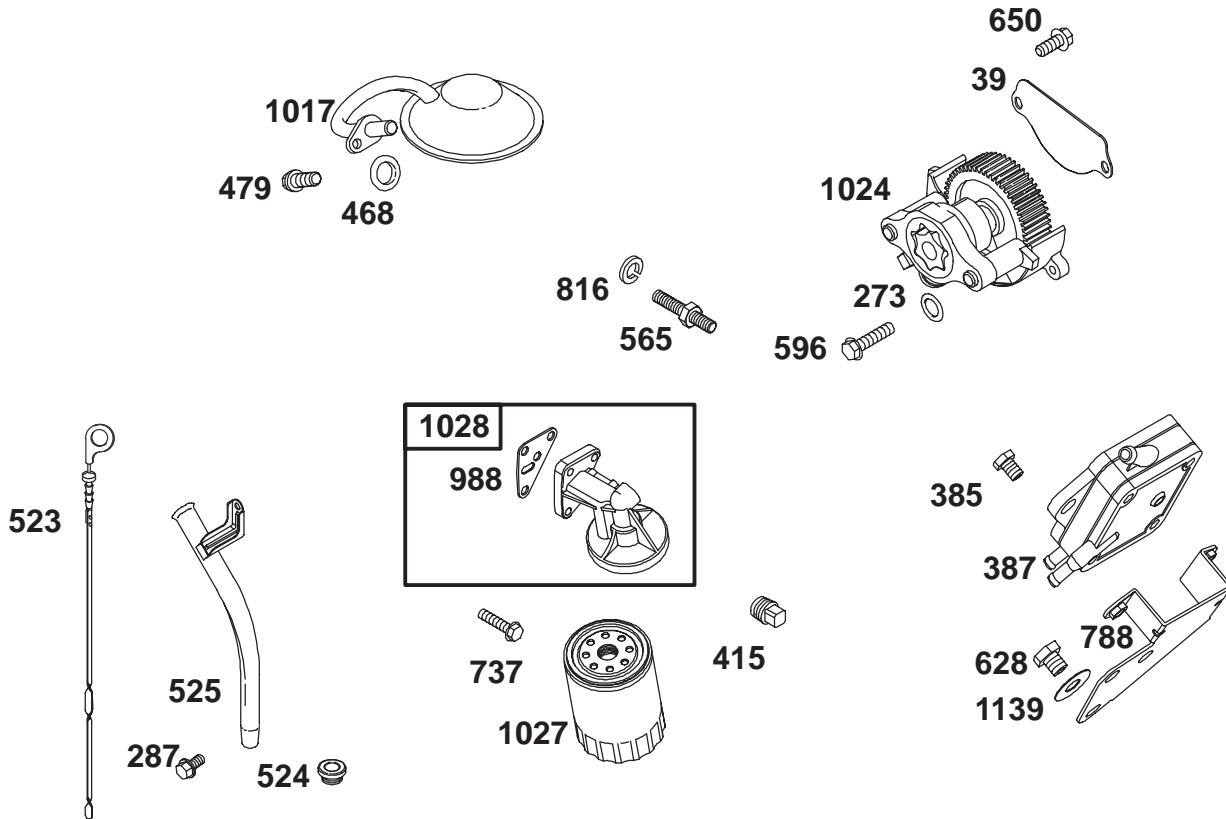
Assemblies include all parts shown in frames.

Cylinder Head Assembly Briggs and Stratton 350447-1116-E1

| Ref. No. | Part No. | Qty. | Description | Ref. No. | Part No. | Qty. | Description |
|----------|----------|------|--|----------|----------|------|---|
| 5B | 808383 | 1 | Head-Cylinder (Cylinder 1) (Used Before Code Date 01120300) | ★Δ276B | 691766 | 1 | Washer-Sealing (Used Before Code Date 01120300) |
| 5C | 808384 | 1 | Head-Cylinder (Cylinder 2) (Used Before Code Date 01120300) | Δ812 | 692055 | 1 | Nut (Rocker Cover) (Used Before Code Date 01120300) |
| ★Δ7 | 690888 | 1 | Gasket-Cylinder Head | 830 | 691544 | 1 | Stud-Rocker Arm (Used Before Code Date 01120300) |
| 13 | 692059 | 1 | Screw (Cylinder Head) | ★Δ868 | 691963 | 1 | Seal-Valve |
| 33 | 807681 | 1 | Valve-Exhaust | ★Δ1022 | 806039 | 1 | Gasket-Rocker Cover |
| 34 | 807680 | 1 | Valve-Intake | 1026 | 691836 | 1 | Rod-Push (Intake) |
| 35 | 692084 | 1 | Spring-Valve (Intake) | | 691758 | 1 | Rod-Push (Exhaust) |
| 36 | 692084 | 1 | Spring-Valve (Exhaust) | 1029 | 691543 | 1 | Arm-Rocker |
| 40 | 692058 | 1 | Retainer-Valve | 1100 | 690973 | 1 | Pivot-Rocker Arm |
| 42 | 807683 | 1 | Keeper-Valve | | | | |
| 45 | 690977 | 1 | Tappet-Valve | | | | |
| 192 | 807623 | 1 | Adjuster-Rocker Arm | | | | |

Δ Included in Valve Gasket Set-Ref. 1095.

★ Included in Engine Gasket Set-Ref. 358.



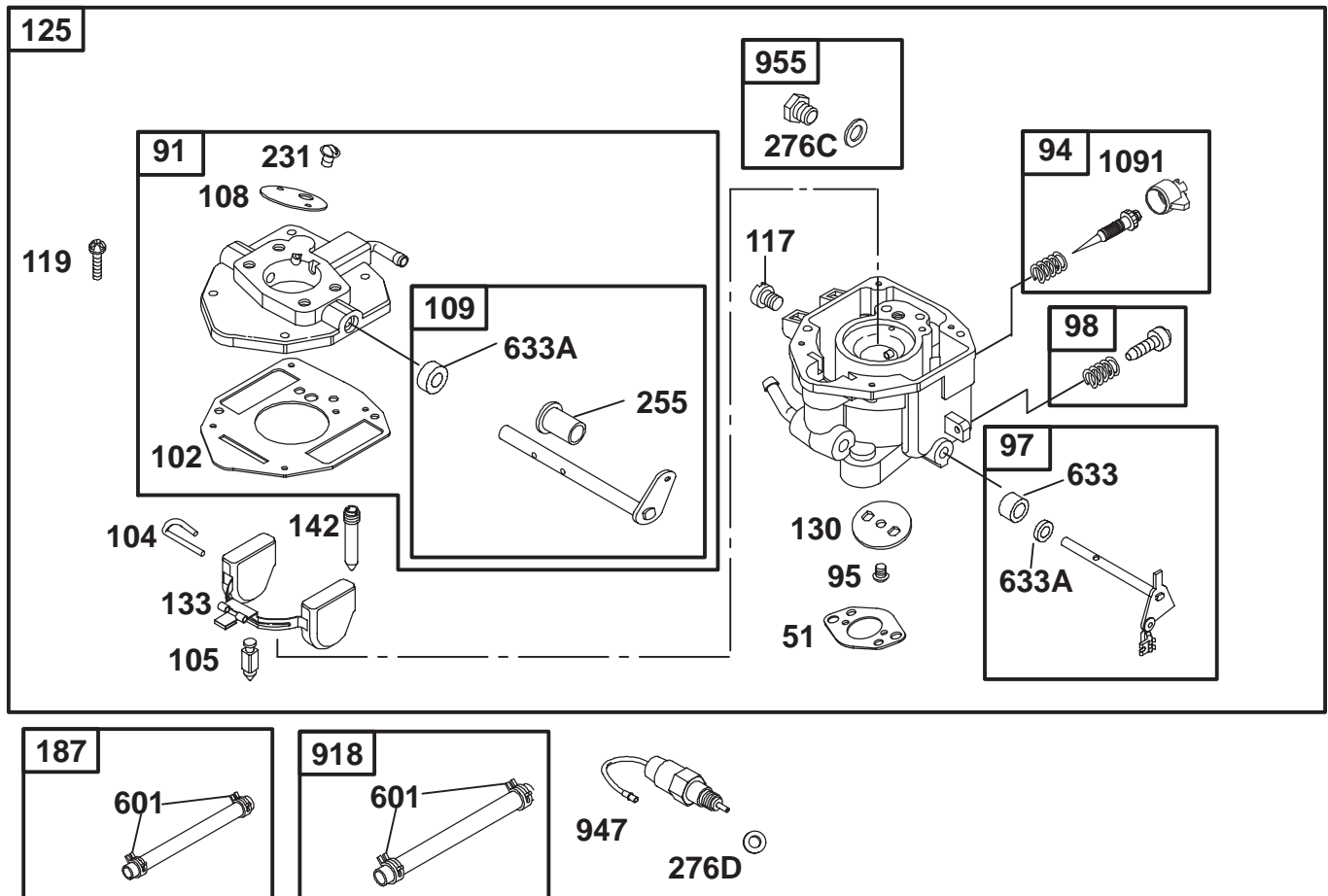
Assemblies include all parts shown in frames.

Oil Filter, Tube and Pump Assembly Briggs and Stratton 350447-1116-E1

| Ref. No. | Part No. | Qty. | Description |
|----------|----------|------|---|
| 39 | 690745 | 1 | Deflector-Oil |
| ★273 | 690681 | 1 | Seal-O Ring (Oil Pump) |
| 287 | 692062 | 1 | Screw (Dipstick Tube) |
| 385 | 807084 | 1 | Screw (Fuel Pump) (Used After Code Date 02012700) |
| | 693169 | 1 | Screw (Fuel Pump) (Used Before Code Date 02012800) |
| 387 | 808969 | 1 | Pump-Fuel |
| 415 | 690283 | 1 | Plug |
| ★468 | 690690 | 1 | Seal-O Ring (Oil Pump Screen) |
| 479 | 692537 | 1 | Screw (Oil Pump Screen) |
| 523 | 693175 | 1 | Dipstick |
| ★524 | 693172 | 1 | Seal-Dipstick Tube |
| 525 | 693174 | 1 | Tube-Dipstick |

| Ref. No. | Part No. | Qty. | Description |
|----------|----------|------|--------------------------------|
| 565 | 690682 | 1 | Stud (Oil Filter Adapter) |
| 596 | 691492 | 1 | Screw (Oil Pump) |
| 628 | 692062 | 1 | Screw (Fuel Pump Bracket) |
| 650 | 692539 | 1 | Screw (Oil Deflector) |
| 737 | 690679 | 1 | Screw (Oil Filter Adapter) |
| 788 | 691559 | 1 | Bracket-Fuel Pump |
| 816 | 690706 | 1 | Washer (Oil Filter Adapter) |
| ★988 | 692063 | 1 | Gasket-Oil Filter Adapter |
| 1017 | 690900 | 1 | Screen-Oil Pump |
| 1024 | 693185 | 1 | Pump-Oil |
| 1027 | 492932 | 1 | Filter-Oil |
| 1028 | 808235 | 1 | Adapter-Oil Filter |
| 1139 | 806497 | 1 | Washer (Fuel Pump Bracket) |

★ Included in Engine Gasket Set-Ref. 358.



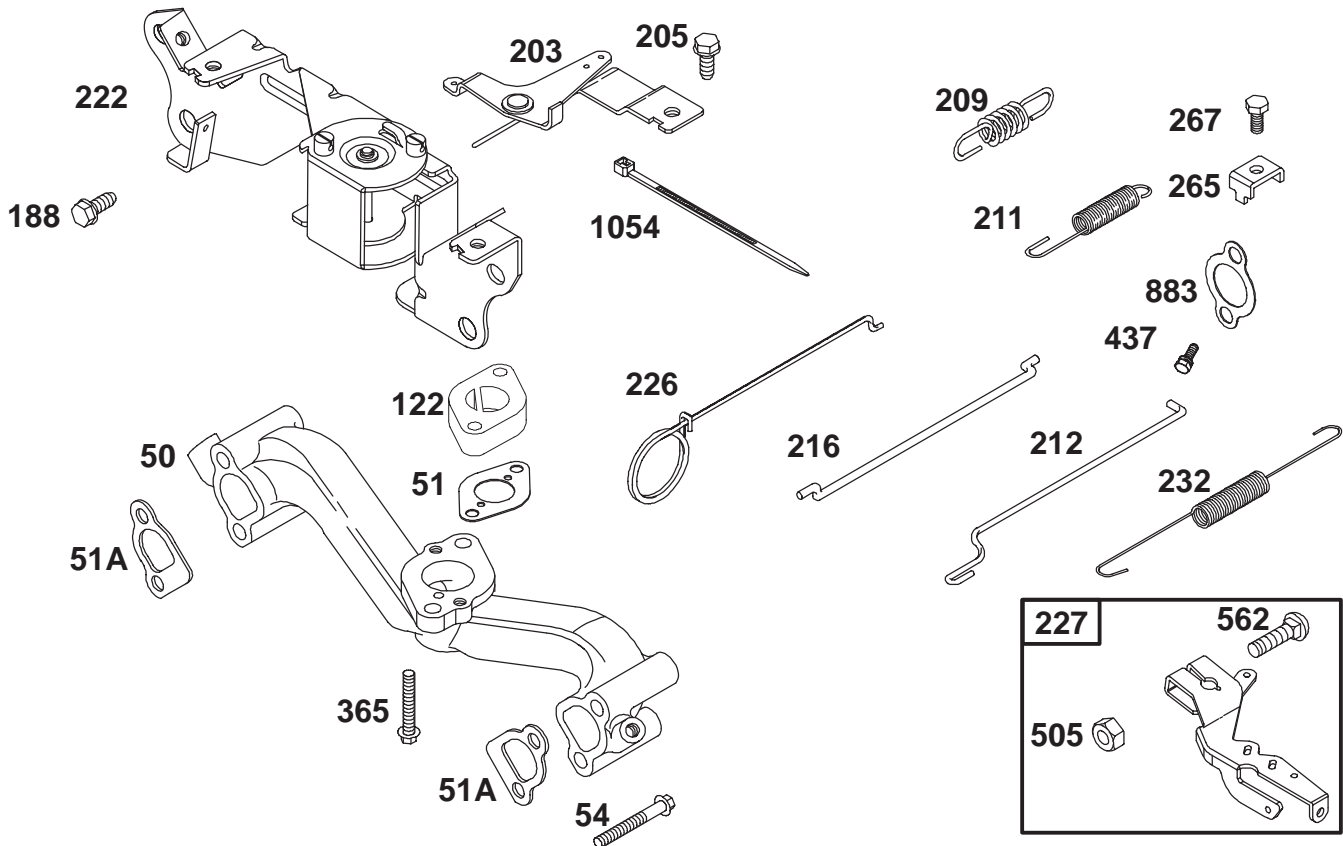
Assemblies include all parts shown in frames.

Carburetor Assembly Briggs and Stratton 350447-1116-E1

| Ref. No. | Part No. | Qty. | Description | Ref. No. | Part No. | Qty. | Description |
|----------|----------|------|--------------------------------|----------|----------|------|---|
| ★51 | 691694 | 1 | Gasket-Intake | 187 | 691050 | 1 | Line-Fuel (Cut to Required Length) |
| 91 | 808396 | 1 | Body-Upper Carburetor | 231 | 690718 | 1 | Screw (Choke Valve) |
| ●94 | 808257 | 1 | Kit-Idle Mixture | 255 | 690721 | 1 | Bushing-Choke Shaft |
| 95 | 690718 | 1 | Screw (Throttle Valve) | ●276C | 690724 | 1 | Washer-Sealing |
| 97 | 809062 | 1 | Shaft-Throttle | 276D | 806137 | 1 | Washer-Sealing |
| 98 | 808981 | 1 | Kit-Idle Speed | 601 | 691038 | 1 | Clamp-Hose |
| ●102 | 692077 | 1 | Gasket-Carburetor Body | ●633 | 806131 | 1 | Seal-Choke/Throttle Shaft |
| ●104 | 690723 | 1 | Pin-Float Hinge | ●633A | 690722 | 1 | Seal-Choke/Throttle Shaft |
| ●105 | 808798 | 1 | Valve-Float Needle | 918 | 691049 | 1 | Line-Vacuum (Cut to Required Length) |
| 108 | 806134 | 1 | Valve-Choke | 947 | 692094 | 1 | Solenoid-Fuel |
| 109 | 808398 | 1 | Shaft-Choke | 955 | 807723 | 1 | Plug-Carburetor |
| 117 | 806126 | 1 | Jet-Main (Standard) | ●1091 | 691516 | 1 | Cap-Limiter |
| 119 | 690720 | 1 | Screw (Upper to Lower Body) | | | | |
| 125 | 809017 | 1 | Carburetor | | | | |
| 130 | 806132 | 1 | Valve-Throttle | | | | |
| 133 | 806961 | 1 | Float-Carburetor | | | | |
| 142 | 806128 | 1 | Nozzle-Carburetor | | | | |

● Included in Carburetor Overhaul Kit-Ref. 121.

★ Included in Engine Gasket Set-Ref. 358.



Assemblies include all parts shown in frames.

Governor Assembly Briggs and Stratton 350447-1116-E1

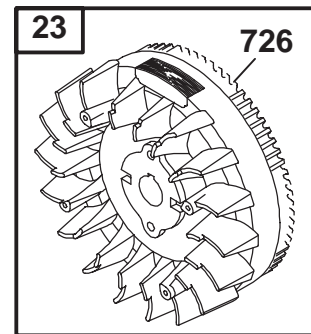
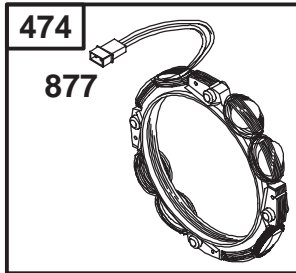
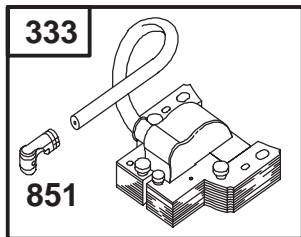
| Ref. No. | Part No. | Qty. | Description |
|----------|----------|------|-------------------------------------|
| 50 | 690754 | 1 | Manifold-Intake |
| ★●51 | 691694 | 1 | Gasket-Intake |
| ★△51A | 692035 | 1 | Gasket-Intake |
| 54 | 690676 | 1 | Screw (Intake Manifold) |
| 122 | 690747 | 1 | Spacer-Carburetor |
| 188 | 692056 | 1 | Screw (Control Bracket) |
| 203 | 690923 | 1 | Crank-Bell |
| 205 | 692083 | 1 | Screw (Bell Crank) |
| 209 | 691508 | 1 | Spring-Governor |
| 211 | 692069 | 1 | Spring-Governed Idle |
| | 692068 | 1 | Spring-Governed Idle (Secondary) |
| 212 | 690712 | 1 | Link-Governor |
| 216 | 690705 | 1 | Link-Choke |
| 222 | 808454 | 1 | Bracket-Control |
| 226 | 692075 | 1 | Choke-Rod Hand |
| 227 | 690236 | 1 | Lever-Governor Control |
| 232 | 692073 | 1 | Spring-Governor Link |

| Ref. No. | Part No. | Qty. | Description |
|----------|----------|------|-------------------------------------|
| 265 | 691024 | 1 | Clamp-Casing |
| 267 | 692083 | 1 | Screw (Casing Clamp) |
| 365 | 690711 | 1 | Screw (Carburetor) |
| 437 | 691902 | 1 | Screw (Exhaust Manifold)) |
| 505 | 690238 | 1 | Nut (Governor Control Lever) |
| 562 | 690239 | 1 | Bolt (Governor Control Lever) |
| ★△883 | 691613 | 1 | Gasket-Exhaust |
| 1054 | 280275 | 1 | Tie-Cable |

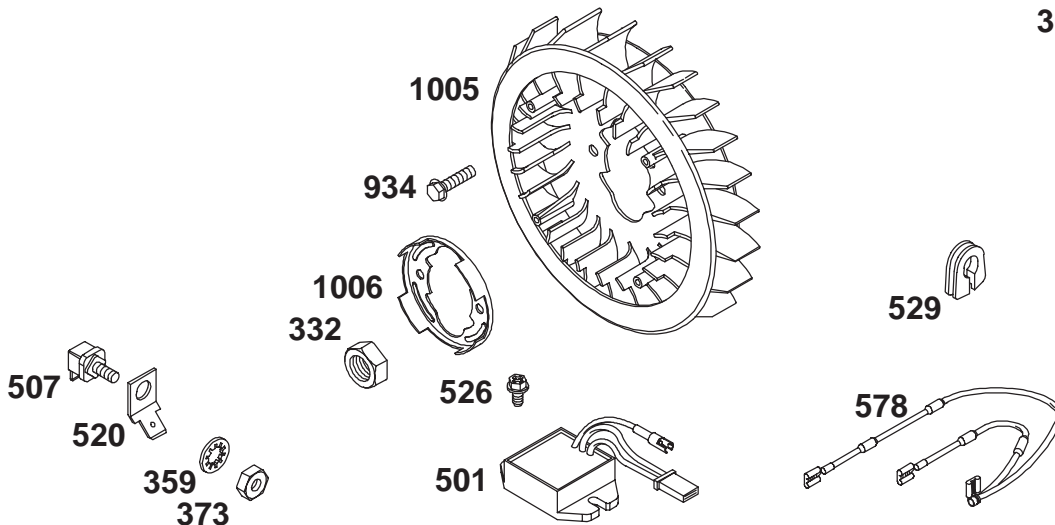
△ Included in Valve Gasket Set-Ref. 1095.

★ Included in Engine Gasket Set-Ref. 358.

● Included in Carburetor Overhaul Kit-Ref. 121.



1036 LABEL-EMISSION

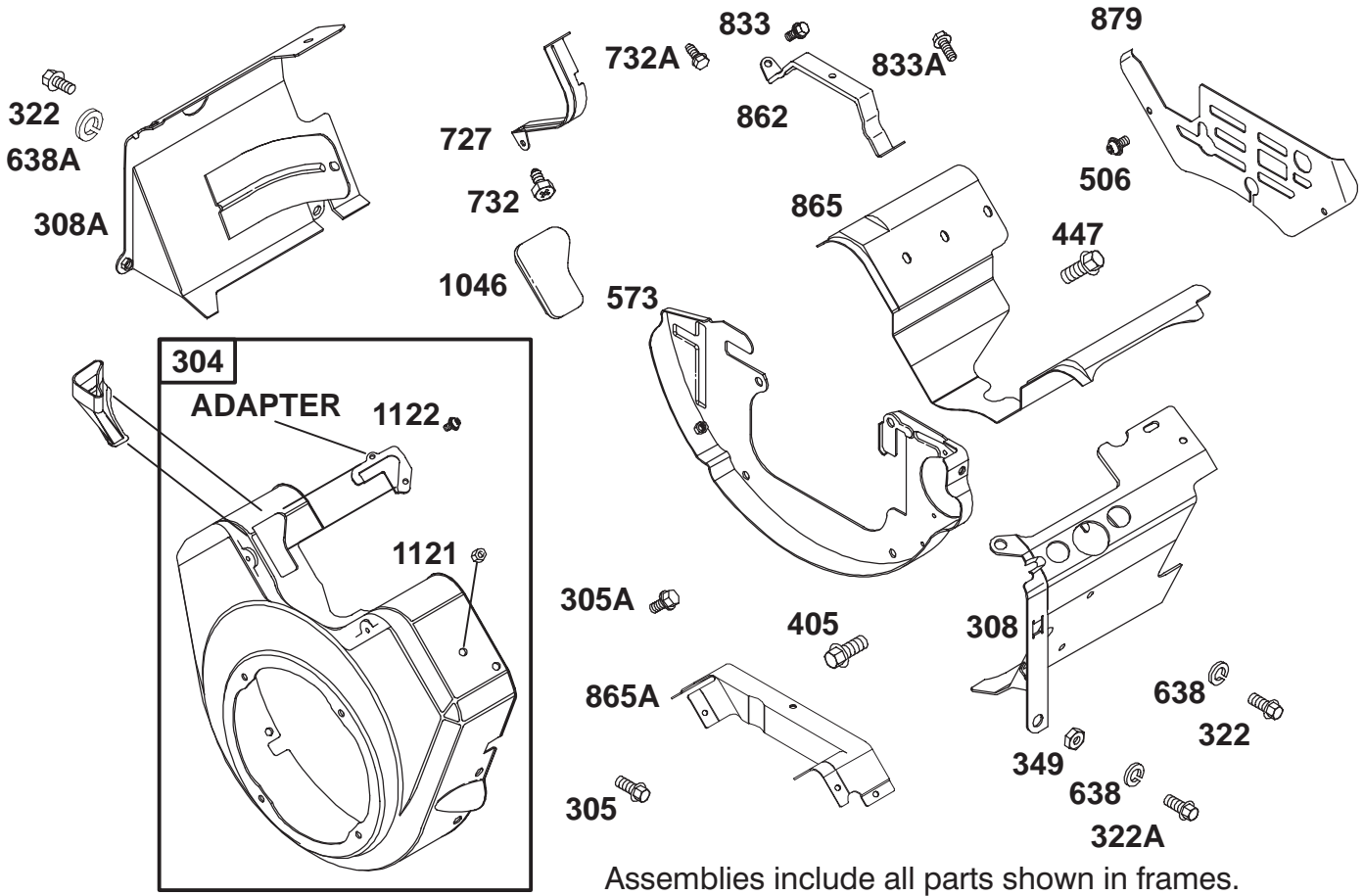


Assemblies include all parts shown in frames.

Blower Housing Assembly Briggs and Stratton 350447-1116-E1

| Ref. No. | Part No. | Qty. | Description |
|----------|----------|------|--|
| 23 | 808766 | 1 | Flywheel |
| 332 | 690887 | 1 | Nut (Flywheel) |
| 333 | 492341 | 1 | Armature-Magneto |
| 334 | 692066 | 1 | Screw (Magneto Armature) |
| 359 | 691077 | 1 | Washer (Ground Terminal) |
| 363 | 19203 | 1 | Puller-Flywheel |
| 373 | 691612 | 1 | Nut (Ground Terminal) |
| 474 | 696458 | 1 | Alternator |
| 501 | 691185 | 1 | Regulator |
| 507 | 691972 | 1 | Insulator |
| 520 | 691084 | 1 | Terminal-Ground |
| 526 | 692067 | 1 | Screw (Regulator) |
| 529 | 690744 | 1 | Grommet |
| 578 | 692319 | 1 | Wire Assembly |
| 726 | | 1 | Gear-Ring (See Reference 23 for Service) |
| 729 | 690586 | 1 | Clip-Wire |

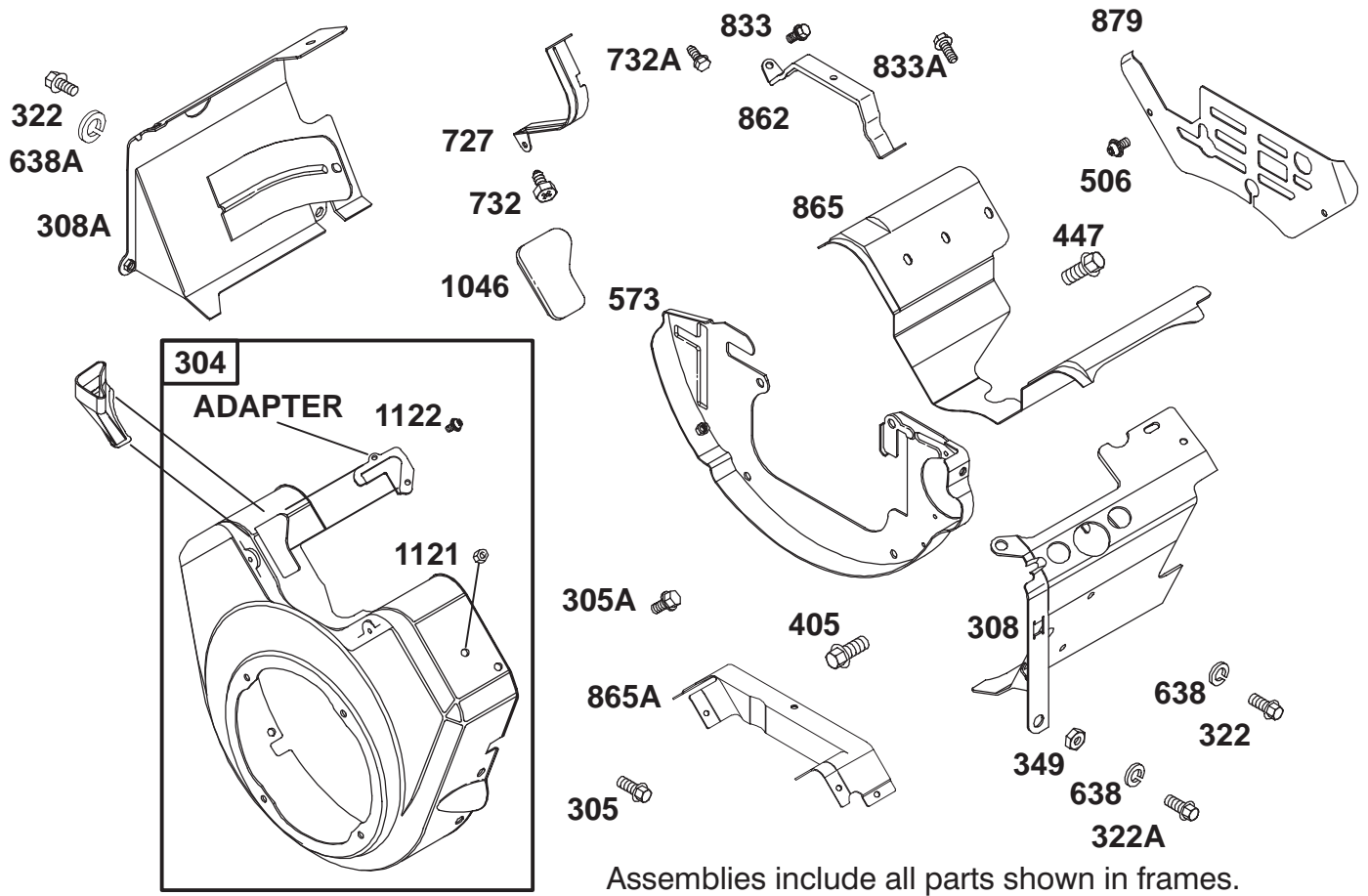
| Ref. No. | Part No. | Qty. | Description |
|----------|----------|------|---------------------------|
| 851 | 493880 | 1 | Terminal-Spark Plug |
| 877 | 399916 | 1 | Wire/Connector-Alternator |
| 934 | 691058 | 1 | Screw (Fan Retainer) |
| 1005 | 690911 | 1 | Fan-Flywheel |
| 1006 | 690452 | 1 | Retainer-Fan |
| 1036 | 806885 | 1 | Label-Emission |
| 1119 | 691552 | 1 | Screw (Alternator) |



Blower Housing Assembly Briggs and Stratton 350447-1116-E1

| Ref. No. | Part No. | Qty. | Description |
|----------|----------|------|--|
| 304 | 690929 | 1 | Housing-Blower |
| 305 | 692539 | 1 | Screw (Blower Housing) |
| 305A | 692056 | 1 | Screw (Blower Housing) |
| 308 | 806545 | 1 | Cover-Cylinder Head (Cylinder 1) |
| 308A | 806544 | 1 | Cover-Cylinder Head (Cylinder 2) |
| 322 | 692539 | 1 | Screw (Cylinder Head Cover) |
| 322A | 692067 | 1 | Screw (Cylinder Head Cover) |
| 349 | 690238 | 1 | Nut (Cylinder Head Cover) |
| 405 | 807163 | 1 | Screw (Back Plate) (Used After Code Date 02013100) |
| | 692539 | 1 | Screw (Back Plate) (Used Before Code Date 02020100) |
| 447 | 692539 | 1 | Screw |

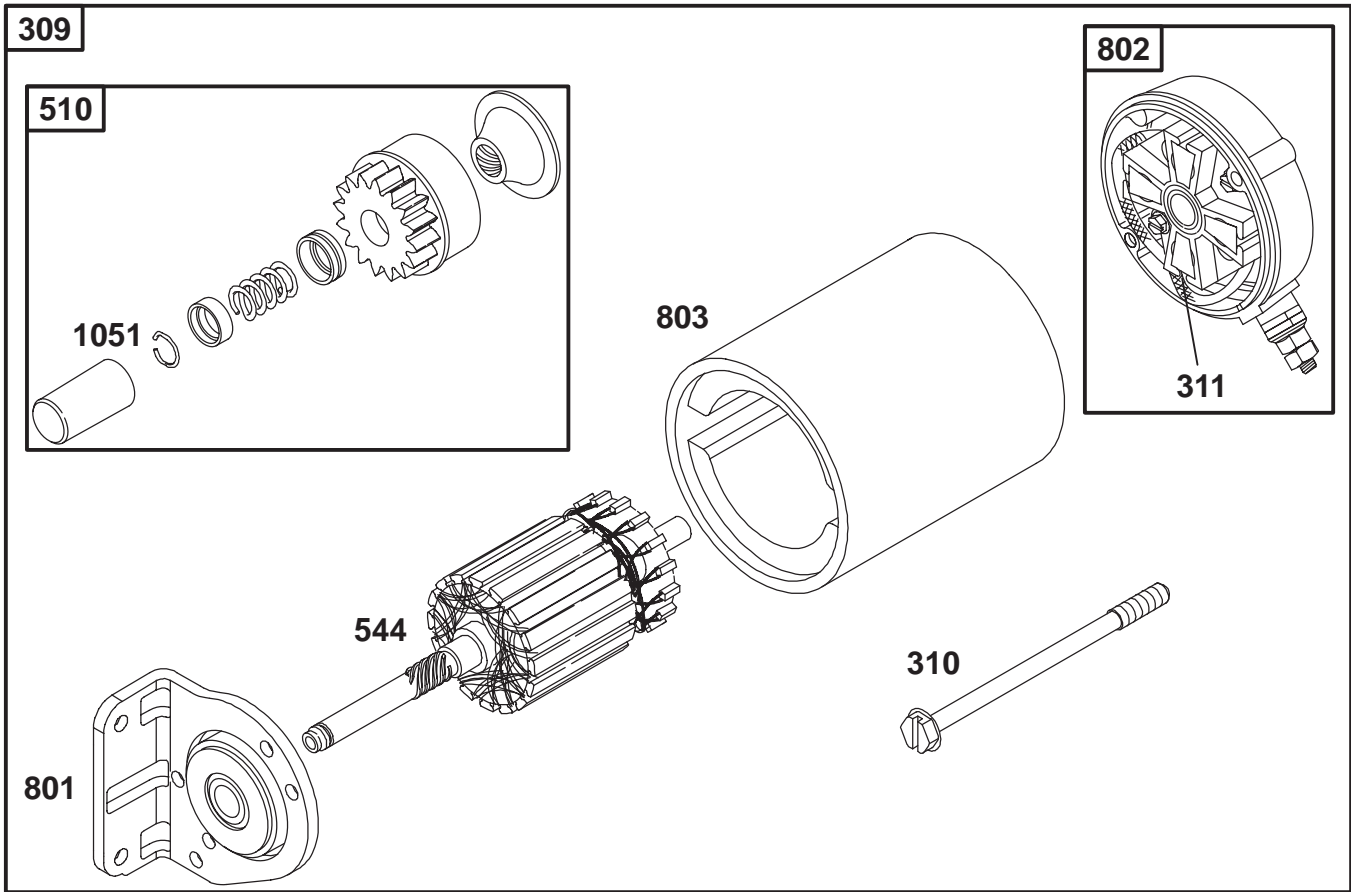
| Ref. No. | Part No. | Qty. | Description |
|----------|----------|------|--------------------------------------|
| | | | (Air Guide Cover) |
| 506 | 690677 | 1 | Screw (Carburetor Cover) |
| 573 | 690902 | 1 | Plate-Back |
| 638 | 691551 | 1 | Washer (Cylinder Head Cover) |
| 638A | 690706 | 1 | Washer (Cylinder Head Cover) |
| 727 | 690714 | 1 | Cover-Starter Drive |
| 732 | 690688 | 1 | Screw (Starter Drive Cover) |
| 732A | 692539 | 1 | Screw (Starter Drive Cover) |
| 833 | 692539 | 1 | Screw (Cleaner Mounting Strap) |
| 833A | 807084 | 1 | Screw (Cleaner Mounting Strap) |
| 862 | 692153 | 1 | Strap-Cleaner Mounting |
| 865 | 690750 | 1 | Cover-Air Guide |
| 865A | 690901 | 1 | Cover-Air Guide |
| 879 | 690757 | 1 | Cover-Carburetor |



Blower Housing Assembly (continued) Briggs and Stratton 350447-1116-E1

| Ref. No. | Part No. | Qty. | Description |
|----------|----------|------|--------------------------------|
| 1121 | 810056 | 1 | Nut (Air Cleaner) |
| 1122 | 93410 | 1 | Screw (Control Wire Casing) |
| 1046 | 692082 | 1 | Plug-Blower Housing |

| Ref. No. | Part No. | Qty. | Description |
|----------|----------|------|-------------|
| | | | |

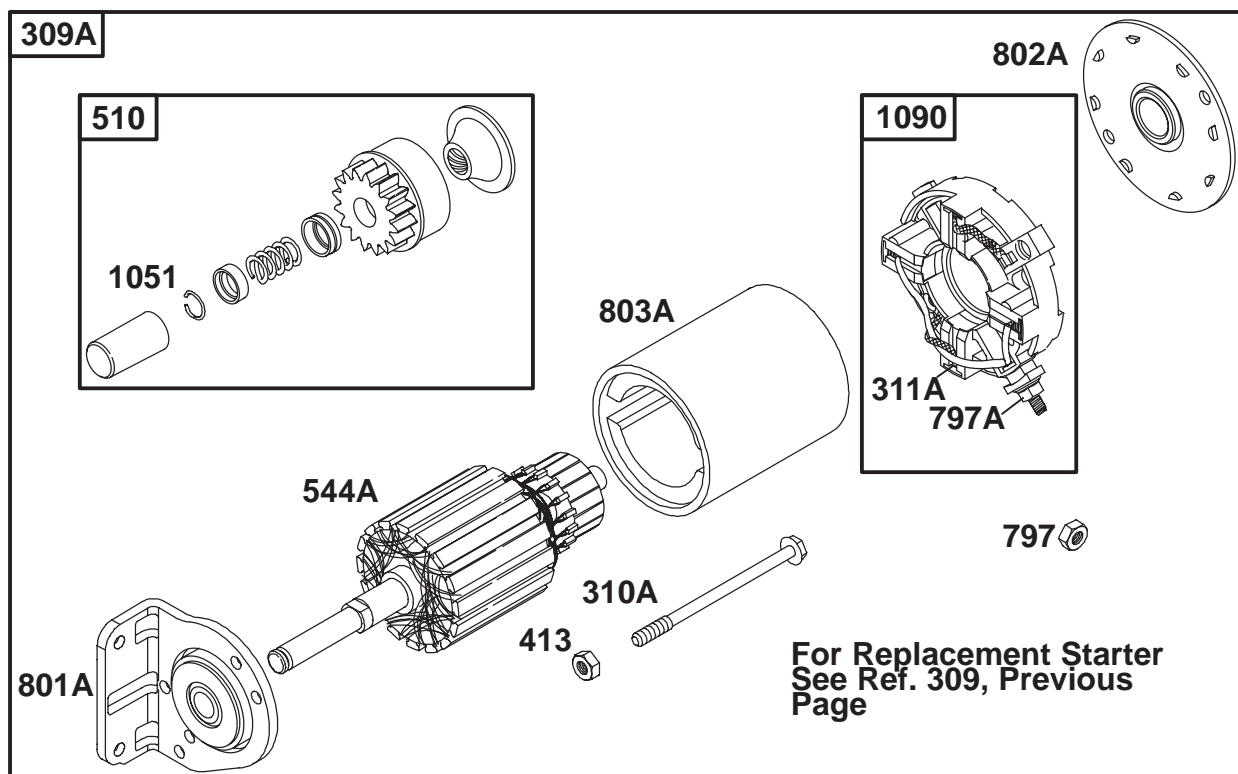


Assemblies include all parts shown in frames.

Starter Assembly Briggs and Stratton 350447-1116-E1

| Ref. No. | Part No. | Qty. | Description |
|----------|----------|------|-------------------------|
| 309 | 691564 | 1 | Motor-Starter |
| 310 | 496880 | 1 | Bolt (Starter Motor) |
| 311 | 496887 | 1 | Brush Set |
| 510 | 496881 | 1 | Drive-Starter |
| 544 | 690855 | 1 | Armature-Starter |
| 697 | 692062 | 1 | Screw (Drive Cap) |
| 801 | 808778 | 1 | Cap-Drive |
| 802 | 496813 | 1 | Cap-End |
| 803 | 690854 | 1 | Housing-Starter |
| 1051 | 691124 | 1 | Ring-Retaining |

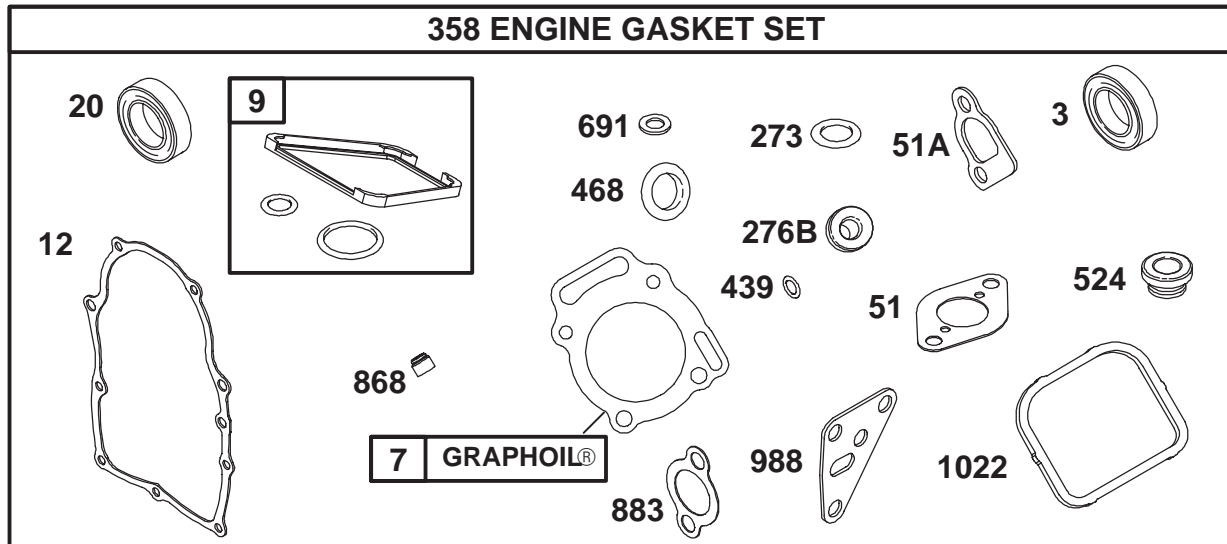
| Ref. No. | Part No. | Qty. | Description |
|----------|----------|------|-------------|
| | | | |
| | | | |
| | | | |
| | | | |
| | | | |
| | | | |
| | | | |
| | | | |
| | | | |
| | | | |



Assemblies include all parts shown in frames.

Starter Assembly Briggs and Stratton 350447-1116-E1

| Ref. No. | Part No. | Qty. | Description | Ref. No. | Part No. | Qty. | Description |
|----------|----------|------|---|----------|----------|------|-------------|
| 309A | | 1 | Motor-Starter (For Replacement Starter, See Ref. 309, Previous Page) | | | | |
| 310A | 690323 | 1 | Bolt (Starter Motor) | | | | |
| 311A | 497608 | 1 | Brush Set | | | | |
| 413 | 693587 | 1 | Nut (Starter Motor) | | | | |
| 510 | 496881 | 1 | Drive-Starter | | | | |
| 544A | 693548 | 1 | Armature-Starter | | | | |
| 697 | 692062 | 1 | Screw (Drive Cap) | | | | |
| 797 | 691029 | 1 | Nut (Brush Retainer) | | | | |
| 797A | 693167 | 1 | Nut (Brush Retainer) | | | | |
| 801A | 808777 | 1 | Cap-Drive | | | | |
| 802A | 691286 | 1 | Cap-End | | | | |
| 803A | 693547 | 1 | Housing-Starter | | | | |
| 1051 | 691124 | 1 | Ring-Retaining | | | | |
| 1090 | 691293 | 1 | Retainer-Brush | | | | |



Assemblies include all parts shown in frames.

Engine Gasket Kit Briggs and Stratton 350447-1116-E1

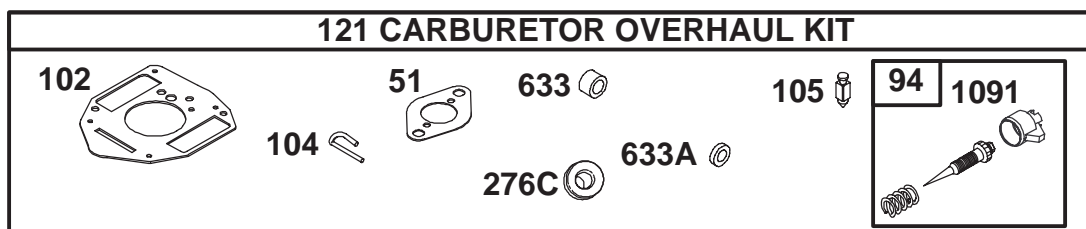
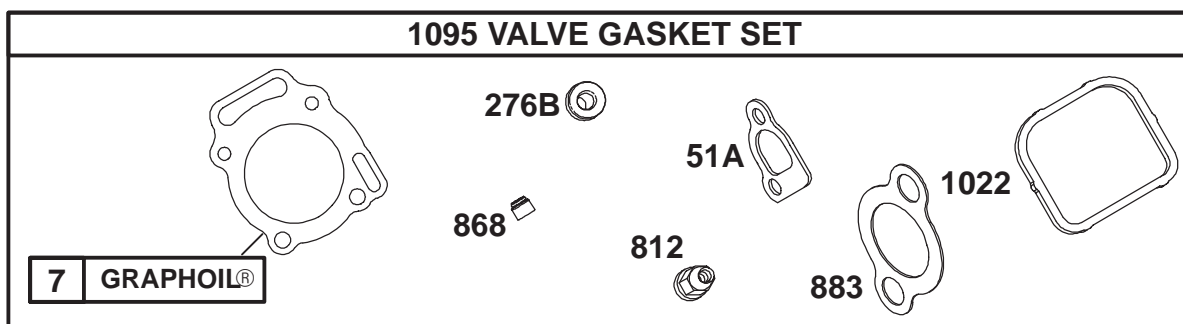
| Ref. No. | Part No. | Qty. | Description |
|----------|----------|------|---|
| ★3 | 805101 | 1 | Seal-Oil (Magneto Side) |
| ★Δ7 | 806085 | 1 | Gasket-Cylinder Head |
| ★9 | 809094 | 1 | Gasket-Breather |
| ★12 | 691684 | 1 | Gasket-Crankcase |
| ★20 | 805049 | 1 | Seal-Oil (PTO Side) |
| ★●51 | 691694 | 1 | Gasket-Intake |
| ★Δ51A | 692035 | 1 | Gasket-Intake |
| ★273 | 690681 | 1 | Seal-O Ring (Oil Pump) |
| ★Δ276B | 691766 | 1 | Washer-Sealing (Used Before Code Date 01120300) |
| 358 | 808390 | 1 | Gasket Set-Engine |
| ★439 | 692154 | 1 | Seal-O Ring (Crankcase Cover) |
| ★468 | 690690 | 1 | Seal-O Ring (Oil Pump Screen) |
| ★524 | 693172 | 1 | Seal-Dipstick Tube |
| ★691 | 690680 | 1 | Seal-Governor Shaft |
| ★Δ868 | 691963 | 1 | Seal-Valve |

| Ref. No. | Part No. | Qty. | Description |
|----------|----------|------|------------------------------|
| ★Δ883 | 691613 | 1 | Gasket-Exhaust |
| ★988 | 692063 | 1 | Gasket-Oil Filter Adapter |
| ★Δ1022 | 806039 | 1 | Gasket-Rocker Cover |

Δ Included in Valve Gasket Set-Ref. 1095.

★ Included in Engine Gasket Set-Ref. 358.

● Included in Carburetor Overhaul Kit-Ref. 121.



Assemblies include all parts shown in frames.

Valve Gasket Set and Carburetor Overhaul Kit Briggs and Stratton 350447-1116-E1

| Ref. No. | Part No. | Qty. | Description | Ref. No. | Part No. | Qty. | Description |
|----------|----------|------|---|----------|----------|------|--|
| ★△7 | 806085 | 1 | Gasket-Cylinder Head | △812 | 692055 | 1 | Nut (Rocker Cover) (Used Before Code Date 01120300) |
| ★●51 | 691694 | 1 | Gasket-Intake | ★△868 | 691963 | 1 | Seal-Valve |
| ★△51A | 692035 | 1 | Gasket-Intake | ★△883 | 691613 | 1 | Gasket-Exhaust |
| ●94 | 808257 | 1 | Kit-Idle Mixture | ★△1022 | 806039 | 1 | Gasket-Rocker Cover |
| ●102 | 692077 | 1 | Gasket-Carburetor Body | ●1091 | 691516 | 1 | Cap-Limiter |
| ●104 | 690723 | 1 | Pin-Float Hinge | 1095 | 808392 | 1 | Gasket Set-Valve |
| ●105 | 808798 | 1 | Valve-Float Needle | | | | |
| 121 | 809023 | 1 | Kit-Carburetor Overhaul | | | | |
| ★△276B | 691766 | 1 | Washer-Sealing (Used Before Code Date 01120300) | | | | |
| ●276C | 690724 | 1 | Washer-Sealing | | | | |
| ●633 | 806131 | 1 | Seal-Choke/Throttle Shaft | | | | |
| ●633A | 690722 | 1 | Seal-Choke/Throttle Shaft | | | | |

△ Included in Valve Gasket Set-Ref. 1095.

★ Included in Engine Gasket Set-Ref. 358.

● Included in Carburetor Overhaul Kit-Ref. 121.

