



Count on it.

Parts Catalog

**5 and 8 Blade Cutting Unit
Reelmaster® 5200-D and 5400-D**

Model No. 03527—Serial No. 220000001 and Up

Model No. 03528—Serial No. 220000001 and Up



Ordering Replacement Parts

To order replacement parts, please supply the part number, the quantity, and the description of each part desired.

Understanding Reference Numbers

Each identified part in an illustration has a reference number. The reference number for a part also appears in the parts list, along with other information about the part.

This catalog uses two special reference number formats, one to indicate parts in a service assembly and another to indicate the quantity of a given part in an illustration.

Service Assembly Reference Numbers

Parts in service assemblies have reference numbers in the form a:b. The a represents the reference number of the entire service assembly and the b represents a sequential number unique to each part within the service assembly.

For example, a wheel assembly might be identified by reference number 6, the tire by 6:1, the valve by 6:2, and the wheel by 6:3. When you order the assembly identified by reference number 6, you receive all parts identified by reference numbers 6:1, 6:2, and 6:3. However, you may also order any part individually. Reference numbers of this type appear in illustration and in parts lists.

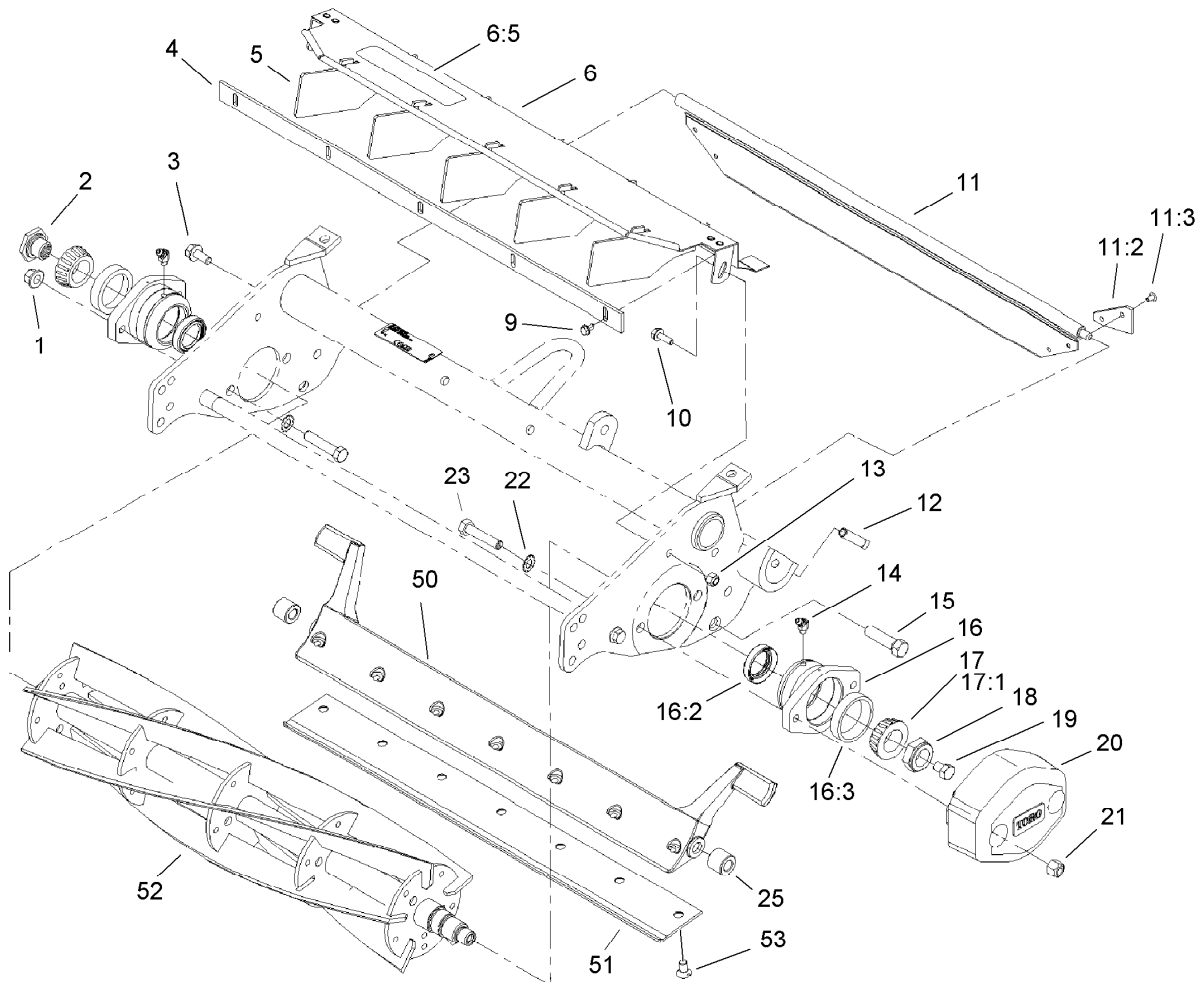
Reference Numbers Indicating Quantity

In an illustration, if a reference number indicates more than one part, the reference number has the form nX y. The n represents the quantity of the part, the X is the multiplication symbol, and the y represents the reference number.

For example, in an illustration, the reference number 2X 37 means that two of the parts identified by reference number 37 are indicated.

Contents

Reel and Frame Assembly	4
Roller and Carrier Frame Assembly	5
Shoulder Roller Assembly No. 104-3369 (Optional).....	6
Guage Bar, Angle Indicator, Brush and Handle Assembly	7
Attachments and Accessories	8

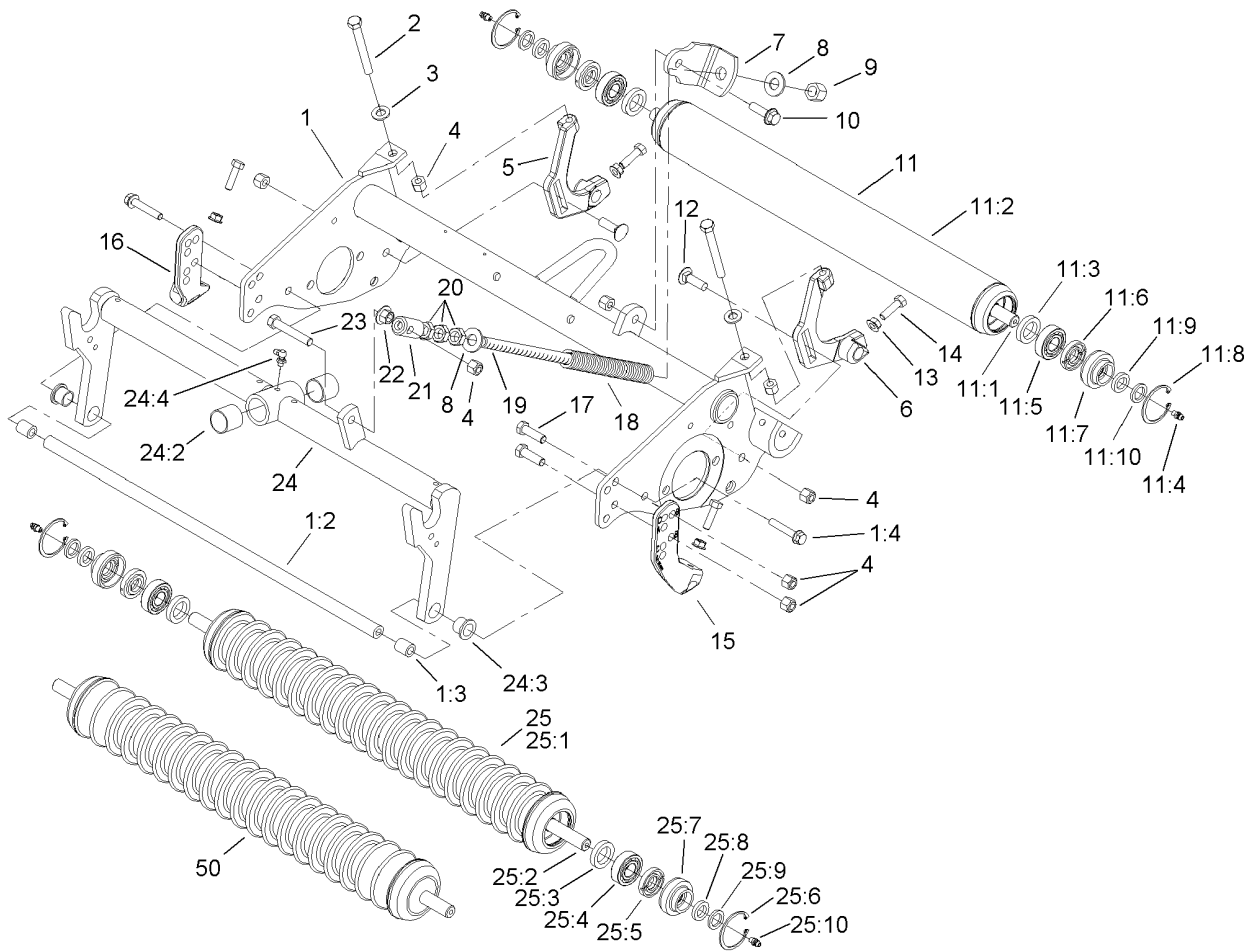


Reel and Frame Assembly

Ref.	Part Number	Qty.	Description	Ref.	Part Number	Qty.	Description
1	32128-36	2	Nut-HF	16	104-3399	2	Bearing Housing ASM
2	93-1394	1	Nut-Spline	16:2	104-3388	1	Seal-Grease
3	3234-5	1	Screw-HHF	16:3	254-72	1	Bearing-Cup, Tapered
4	36-7260	1	Bar-Off, Cut	17		2	Bearing W/Grease ■
5	98-8162	5	Deflector	17:1	254-94	1	Bearing-Cone, Tapered
6	100-4181	1	Front Grass Shield ASM	18	3296-60	1	Nut-Lock, NI
6:5	67-7960	1	Decal-Danger	19	323-2	1	Screw-HH
6:5	93-6688	1	Decal-Danger	20	100-7113-01	1	Weight-End
6:5	94-4584	1	Decal-Danger, Japan	21	3296-39	2	Nut-Lock, NI
9	104-2065	5	Screw-HWH	22	3255-9	4	Washer-Lock
10	3234-4	2	Screw-HHF	23	57-3210	4	Screw
11	100-7136	1	Rear Grass Shield ASM	25	100-7123	2	Spacer-Bedbar
11:2	75-1720	2	Flap-Shield, Rear	50	100-7124-01	1	Bedbar-Machined
11:3	700382	4	Rivet	51	147-1242	1	Bedknife-Rm 21In Highcut ●
12	104-8216	4	Screw-SQH	51	63-8610	1	Bedknife-Fairway (21In)
13	3296-42	2	Nut-Lock, NI	52	14-0649	1	Reel-Blade, 8 ●
14	302-11	2	Fitting-Lube, 45 DEG	52	14-0659	1	Reel-Blade, 5
15	100-7126	2	Bolt-Wheel	53	57-4910	7	Screw-Special

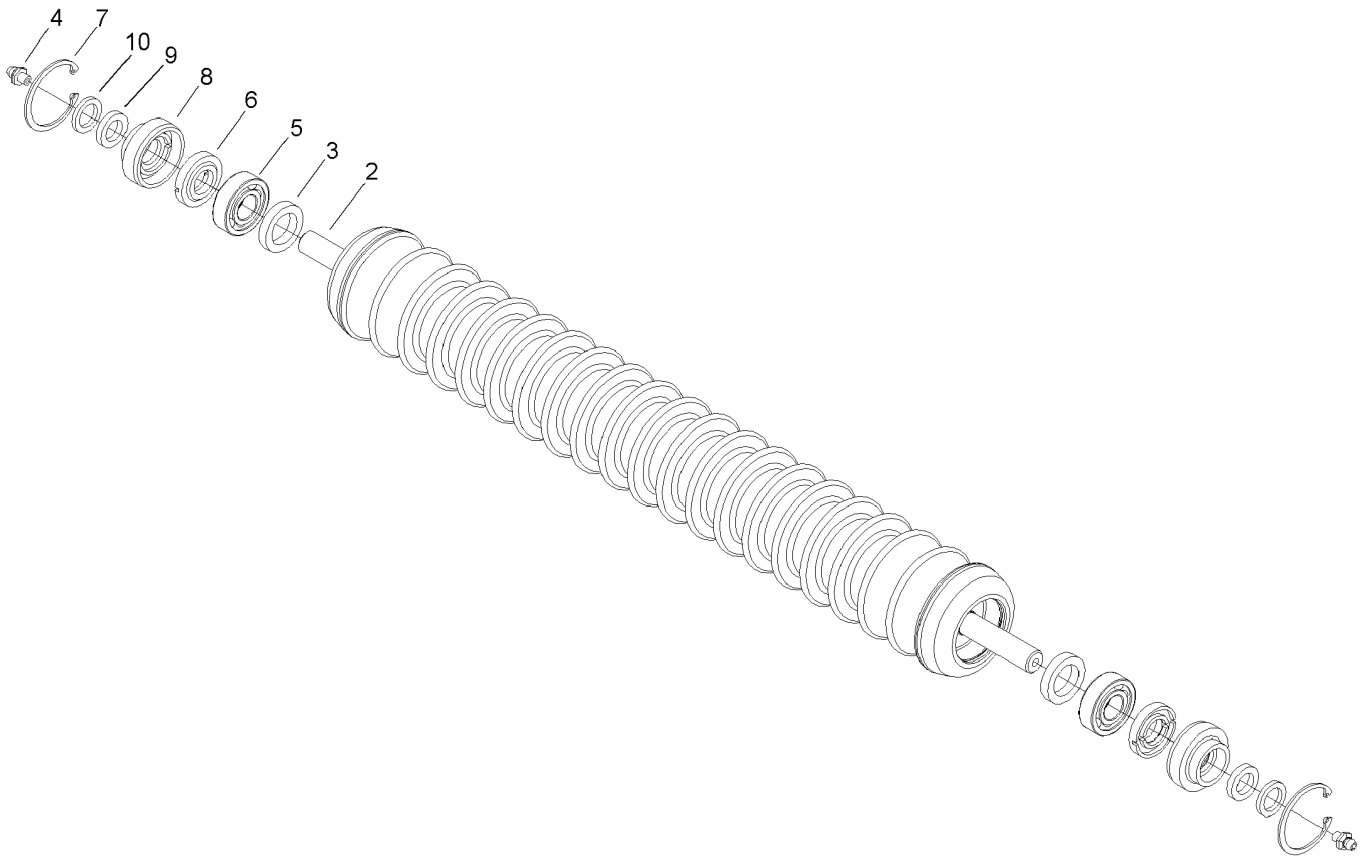
● Not illustrated

■ Not serviced separately



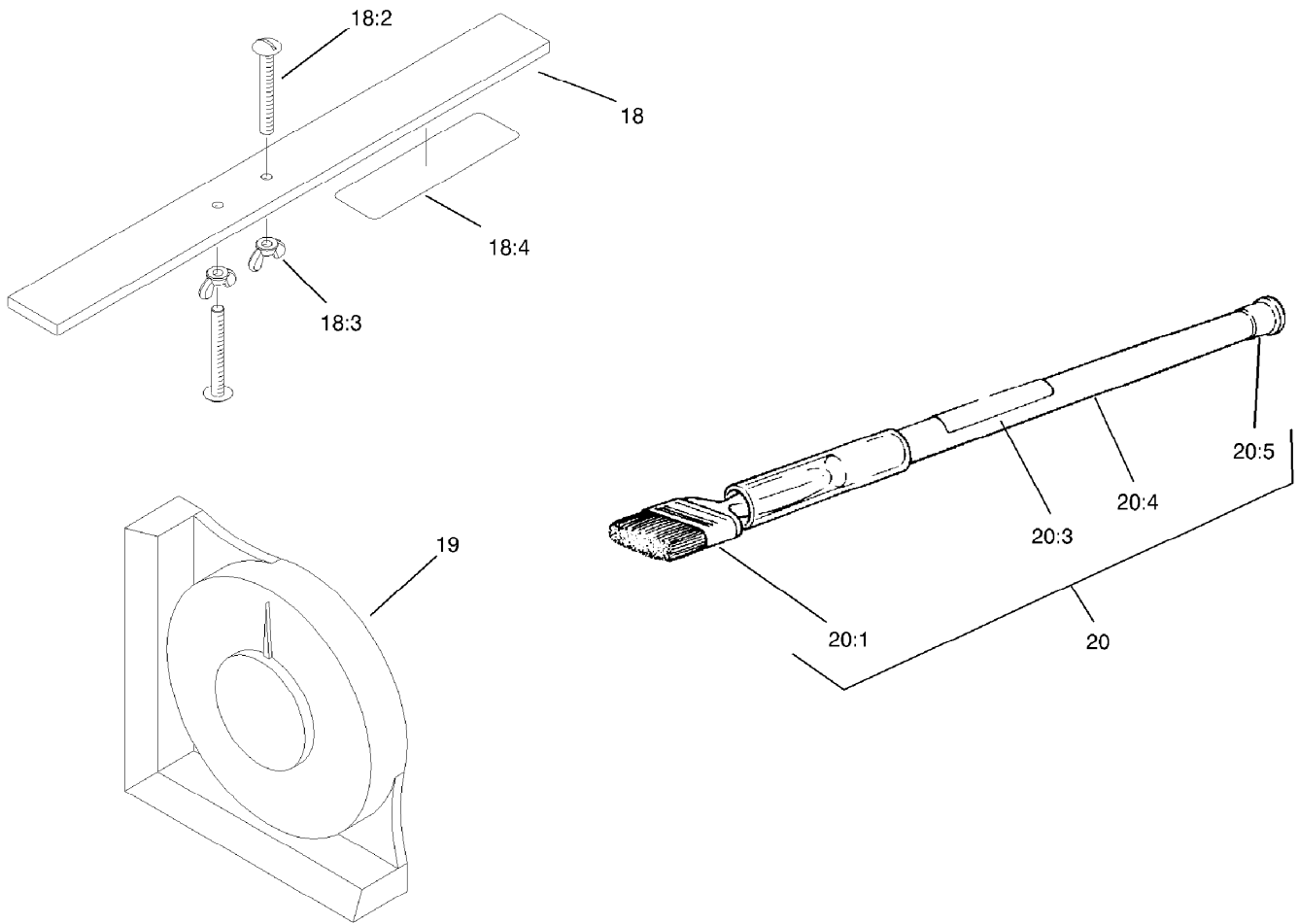
Roller and Carrier Frame Assembly

Ref.	Part Number	Qty.	Description	Ref.	Part Number	Qty.	Description
1	100-7140	1	Reel Frame ASM	14	322-16	4	Screw-HH
1:2	104-3365	1	Rod-Support	15	104-3375-01	1	LH HOC Bracket ASM
1:3	104-3366	2	Spacer	16	104-3373-01	1	RH HOC Bracket ASM
1:4	3234-19	2	Screw-HHF	17	323-7	4	Screw-HH
2	323-49	2	Bolt-TAP	18	104-3394	1	Spring-Compression
3	3256-24	2	Washer-Plain	19	104-3355	1	Rod-Spring
4	3296-39	10	Nut-Lock, NI	20	3218-5	3	Nut-Jam
5	100-7105	1	RH HOC Adjustment ASM	21	99-8662	1	Tube-Spring
6	100-7106	1	LH HOC Adjustment ASM	22	32128-43	1	Nut-Flange
7	104-3661	1	Bracket-Spring	23	104-3396	1	Screw-HH
8	87-7270	2	Washer-Thrust	24	104-3357	1	Carrier Frame ASM
9	3296-23	1	Nut-Lock, NI	24:2	67-1750	2	Bushing
10	3234-24	1	Screw-HHF	24:3	75-2160	2	Bushing
11	100-2536	1	Roller ASM	24:4	302-60	1	Fitting-Grease
11:1	100-2538	1	Shaft-Roller	25	100-7132	1	Wiehle Roller ASM
11:2	100-2537-03	1	Roller Tube ASM	25:1	100-7131-03	1	Roller-Wiehle
11:3	93-3007	2	Seal-Oil	25:2	104-1806	1	Shaft-Roller
11:4	302-5	2	Fitting-Grease	25:3	93-3007	2	Seal-Oil
11:5	109966	2	Bearing-Ball	25:4	109966	2	Bearing-Ball
11:6	93-1251	2	Seal-Inner	25:5	93-1251	2	Seal-Inner
11:7	93-1252	2	Seal-Outer	25:6	32120-62	2	Ring-Retaining
11:8	32120-62	2	Ring-Retaining	25:7	93-1252	2	Seal-Outer
11:9	253-70	2	Seal-Oil	25:8	253-70	2	Seal-Oil
11:10	93-2931	2	Washer-Roller	25:9	93-2931	2	Washer-Roller
12	3231-25	2	Bolt-CARR	25:10	302-5	2	Fitting-Grease
13	32128-20	4	Nut-HF	50	104-3369	1	Shoulder Roller ASM



Shoulder Roller Assembly No. 104-3369 (Optional)

<i>Ref.</i>	<i>Part Number</i>	<i>Qty.</i>	<i>Description</i>
2	104-1806	1	Shaft-Roller
3	93-3007	2	Seal-Oil
4	302-5	2	Fitting-Grease
5	109966	2	Bearing-Ball
6	93-1251	2	Seal-Inner
7	32120-62	2	Ring-Retaining
8	93-1252	2	Seal-Outer
9	253-70	2	Seal-Oil
10	93-2931	2	Washer-Roller



Gauge Bar, Angle Indicator, Brush and Handle Assembly

<i>Ref.</i>	<i>Part Number</i>	<i>Qty.</i>	<i>Description</i>
18	98-1852	1	Gauge Bar ASM
18:2	32122-54	2	Screw-Head, Truss
18:3	32103-3	2	Nut-Wing
18:4	98-7976	1	Decal-Bar, Gauge
19	99-3503	1	Indicator-Angle
20	29-9100	1	Brush And Handle ASM
20:1	36-4310	1	Brush
20:3	12-9140	1	Decal
20:4	29-9080	1	Handle
20:5	2410-18	1	Cap-Plastic

Attachments and Accessories

For 03527 5 and 8 Blade Cutting Unit Reelmaster 5200-D and 5400-D

Product Name	Model/Part
Grass Basket Kit	03532
Rear Roller Brush Kit	03533
Wiehle Scraper Kit	104-3380-03
Comb Kit	104-3385
Rear Roller Scraper Kit	104-3395
Front Adjustment Height-of-Cut Kit for Cutting Units	104-8205
Shoulder Roller Scraper Kit	104-8208-03
3in Dia Collar Kit	104-8215

For 03528 5 and 8 Blade Cutting Unit Reelmaster 5200-D and 5400-D

Product Name	Model/Part
Grass Basket Kit	03532
Rear Roller Brush Kit	03533
Wiehle Scraper Kit	104-3380-03
Comb Kit	104-3385
Rear Roller Scraper Kit	104-3395
Front Adjustment Height-of-Cut Kit for Cutting Units	104-8205
Shoulder Roller Scraper Kit	104-8208-03
3in Dia Collar Kit	104-8215

Notes:

Notes:

Notes:



Count on it.