



Form No. 3473-946 Rev A

**Count on it.**

# Parts Catalog

## **48in Chute Gate Kit** **Z Master® 2000 Series Riding Mower** Model No. 163-4118



# Ordering Replacement Parts

To order replacement parts, please supply the part number, the quantity, and the description of each part desired.

## Understanding Reference Numbers

Each identified part in an illustration has a reference number. The reference number for a part also appears in the parts list, along with other information about the part.

This catalog uses two special reference number formats, one to indicate parts in a service assembly and another to indicate the quantity of a given part in an illustration.

## Service Assembly Reference Numbers

Parts in service assemblies have reference numbers in the form a:b. The a represents the reference number of the entire service assembly and the b represents a sequential number unique to each part within the service assembly.

For example, a wheel assembly might be identified by reference number 6, the tire by 6:1, the valve by 6:2, and the wheel by 6:3. When you order the assembly identified by reference number 6, you receive all parts identified by reference numbers 6:1, 6:2, and 6:3. However, you may also order any part individually. Reference numbers of this type appear in illustration and in parts lists.

## Reference Numbers Indicating Quantity

In an illustration, if a reference number indicates more than one part, the reference number has the form nX y. The n represents the quantity of the part, the X is the multiplication symbol, and the y represents the reference number.

For example, in an illustration, the reference number 2X 37 means that two of the parts identified by reference number 37 are indicated.

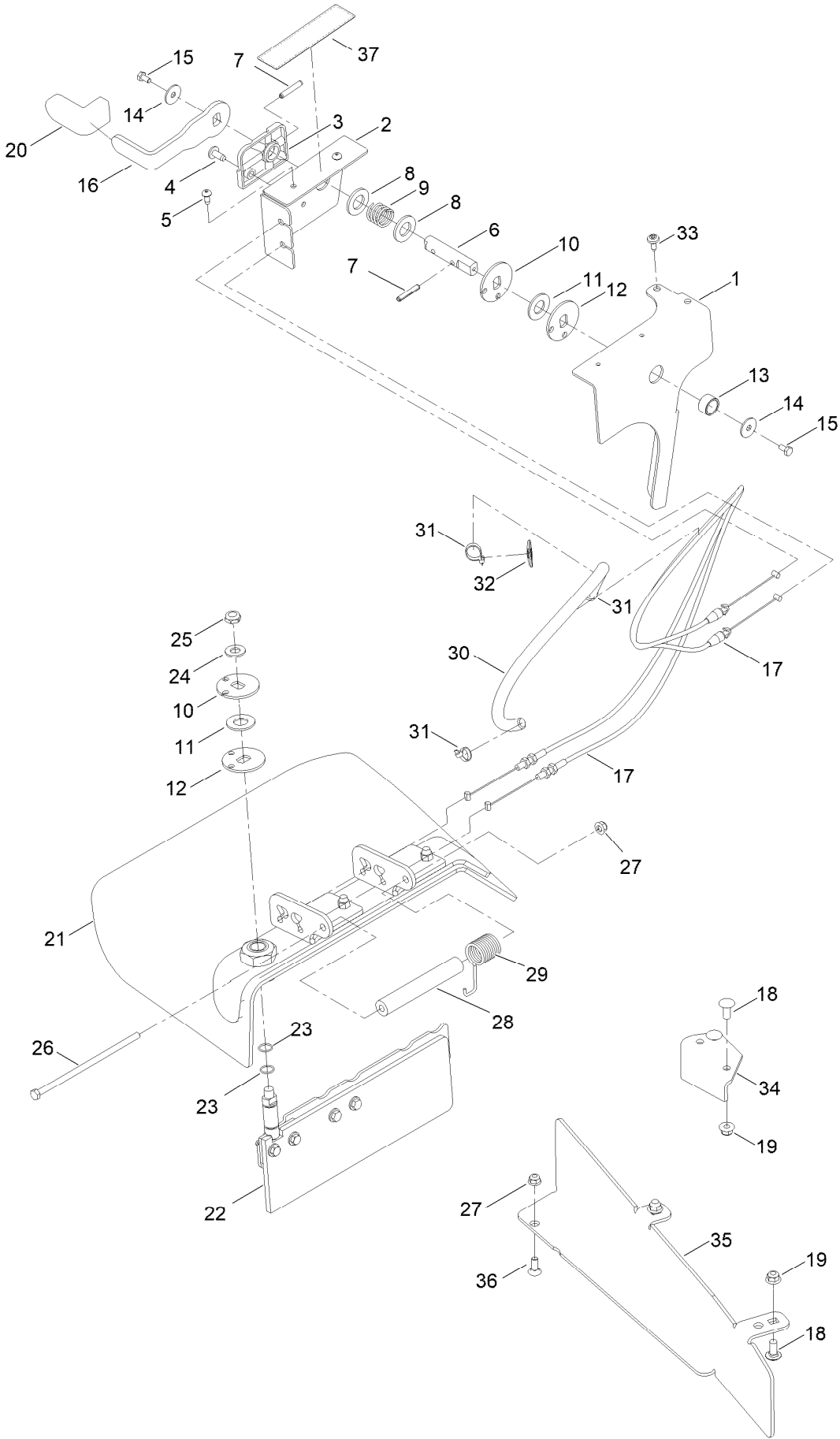
# Contents

48 Inch Chute Gate Kit Assembly No. 163-4118 ..... 4

Rubber Deflector Assembly No. 117-0469 ..... 6

Door Assembly No. 144-2693 ..... 7

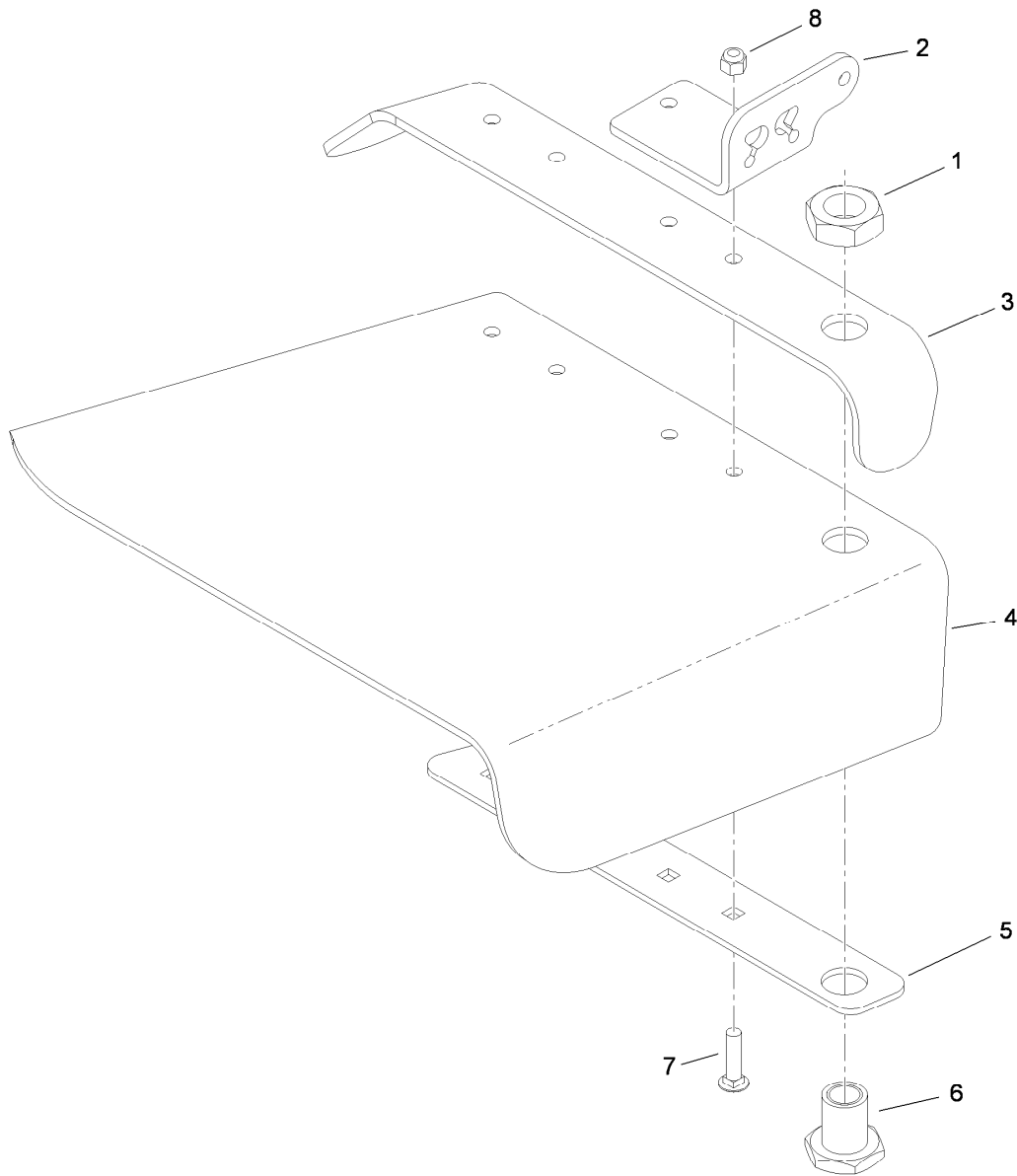
# 48 Inch Chute Gate Kit Assembly No. 163-4118



## 48 Inch Chute Gate Kit Assembly No. 163-4118 (continued)

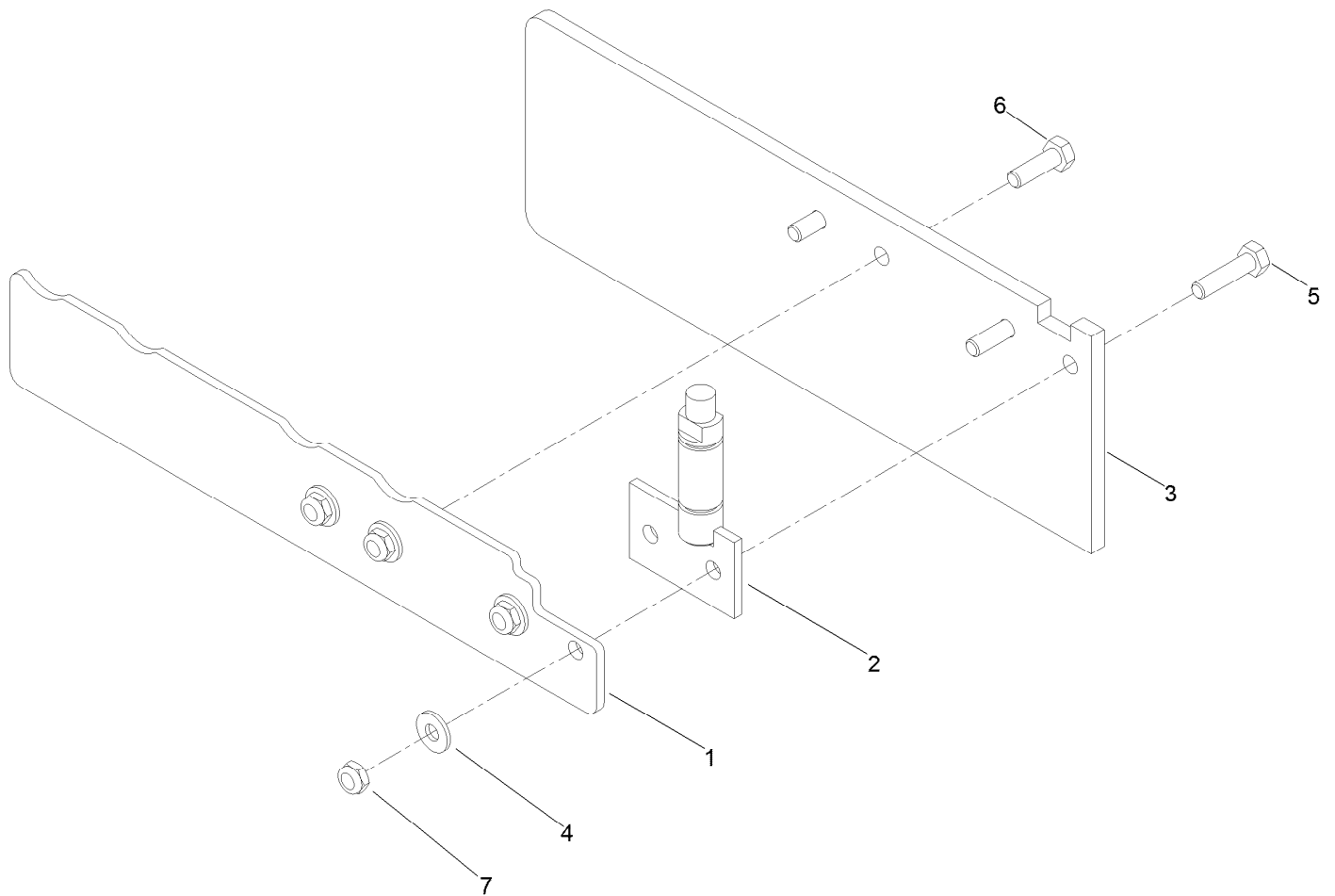
<i>Ref.</i>	<i>Part Number</i>	<i>Qty.</i>	<i>Description</i>
1	163-4117-01	1	Plate-Mounting
2	144-6556-01	1	Bracket-Cover
3	108-2231	1	Block-Detent
4	138-9753	1	Screw
5	87-6620	2	Screw-Tph Thd Form
6	144-6557	1	Pin-Pivot
7	1-806332	2	Roll Pin, 1/4 X 1-1/2
8	3256-28	2	Washer-Flat
9	87-3660	1	Spring-Compression
10	108-7218	2	Pulley-Top
11	108-7217	2	Pulley-Middle
12	108-7216	2	Pulley-Bottom
13	144-6558	1	Bushing
14	3256-82	2	Washer-Flat
15	321-2	2	Screw-HH
16	144-6559	1	Handle-Pivot
17	108-7258	2	Cable
18	3231-27	4	Screw-CARR
19	104-8301	4	Nut-HF, NI

<i>Ref.</i>	<i>Part Number</i>	<i>Qty.</i>	<i>Description</i>
20	132-4749	1	Grip-Lever
21	117-0469	1	Rubber Deflector ASM
22	144-2693	1	ASM-Door
23	237-65	2	O-Ring
24	3256-26	1	Washer-Flat
25	3296-45	1	Nut-Hex
26	322-50	1	Screw-HH
27	104-8300	2	Nut-HF, NI
28	105-4622	1	Spacer
29	108-4052	1	Spring-Torsion
30	108-7247	1	Tube-Convolute
31	3290-378	3	Tie-Cable
32	93-3922	1	Mount-Tie, Cable
33	120-7950	1	Screw-Torx
34	144-2695-01	1	Baffle-Discharge
35	135-0152-01	1	Baffle-Bagger, 48 Inch
36	3230-16	1	Screw-CARR
37	144-6593	1	Decal-Chute Gate



## Rubber Deflector Assembly No. 117-0469

Ref.	Part Number	Qty.	Description
1	67-5840	1	Nut-Jam
2	108-2241-01	2	Plate-Hinge
3	108-2245-01	1	Deflector
4	117-0470	1	Deflector-Chute, Rubber
5	108-2247-03	1	Strap-Discharge
6	108-7215	1	Hub ASM
7	3231-4	4	Screw-CARR
8	3296-39	4	Nut-Lock, NI



## Door Assembly No. 144-2693

Ref.	Part Number	Qty.	Description
1	144-2694-01	1	Plate-Door
2	107-8505	1	Hinge-Gate
3	107-3197	1	Gate-Chute, Rubber
4	3256-2	8	Washer-Flat
5	322-6	2	Screw-HH
6	322-5	2	Screw-HH
7	3296-47	4	Nut-Lock,NI



**Count on it.**