



Count on it.

Form No. 3473-948 Rev A

Parts Catalog

60in Chute Gate Kit Z Master® 2000 Series Riding Mower Model No. 163-4120



Ordering Replacement Parts

To order replacement parts, please supply the part number, the quantity, and the description of each part desired.

Understanding Reference Numbers

Each identified part in an illustration has a reference number. The reference number for a part also appears in the parts list, along with other information about the part.

This catalog uses two special reference number formats, one to indicate parts in a service assembly and another to indicate the quantity of a given part in an illustration.

Service Assembly Reference Numbers

Parts in service assemblies have reference numbers in the form a:b. The a represents the reference number of the entire service assembly and the b represents a sequential number unique to each part within the service assembly.

For example, a wheel assembly might be identified by reference number 6, the tire by 6:1, the valve by 6:2, and the wheel by 6:3. When you order the assembly identified by reference number 6, you receive all parts identified by reference numbers 6:1, 6:2, and 6:3. However, you may also order any part individually. Reference numbers of this type appear in illustration and in parts lists.

Reference Numbers Indicating Quantity

In an illustration, if a reference number indicates more than one part, the reference number has the form nX y. The n represents the quantity of the part, the X is the multiplication symbol, and the y represents the reference number.

For example, in an illustration, the reference number 2X 37 means that two of the parts identified by reference number 37 are indicated.

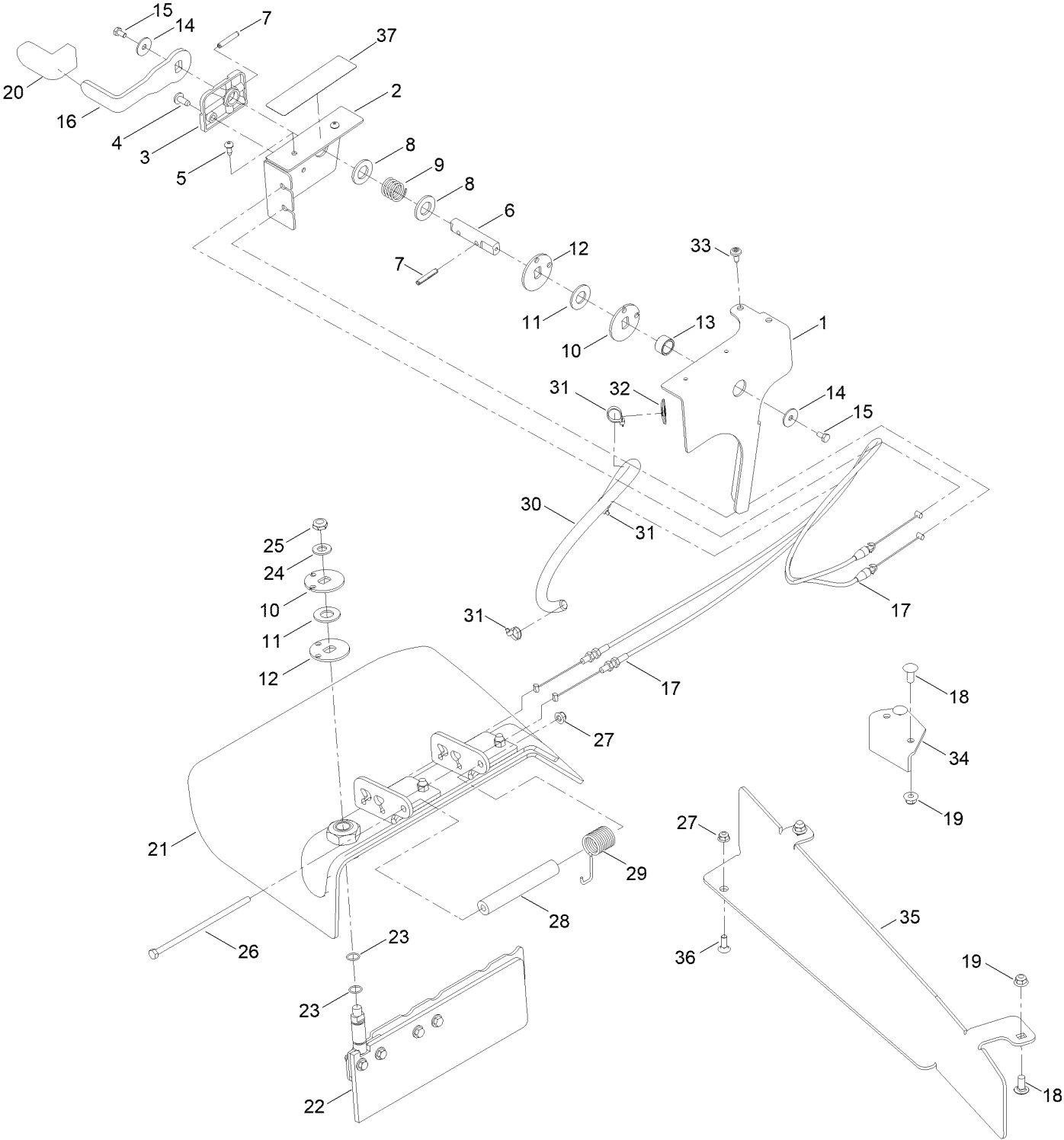
Contents

60 Inch Chute Gate Kit Assembly No. 163-4120..... 4

Rubber Deflector Assembly No. 117-0469..... 6

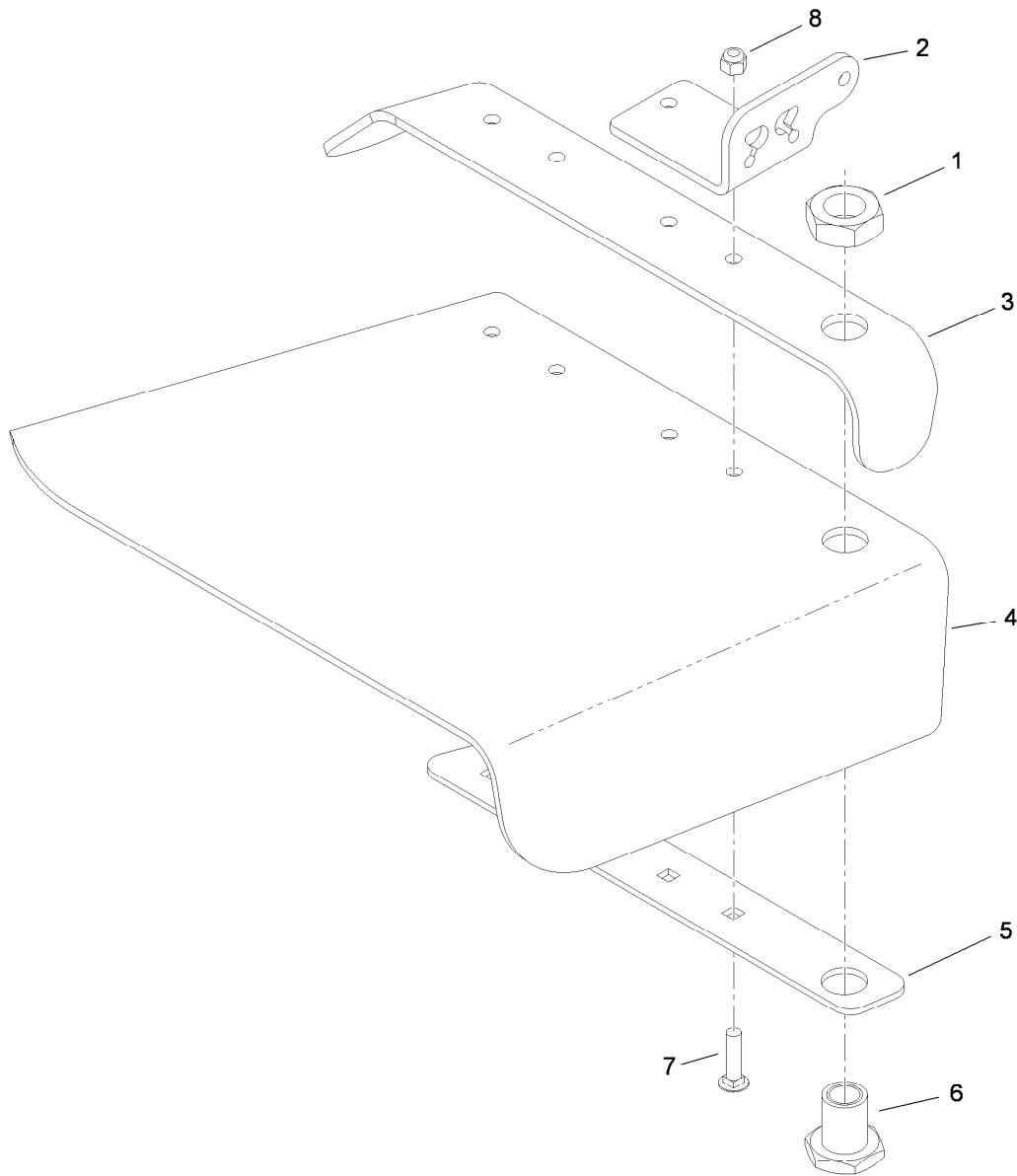
Door Assembly No. 144-2693 7

60 Inch Chute Gate Kit Assembly No. 163-4120



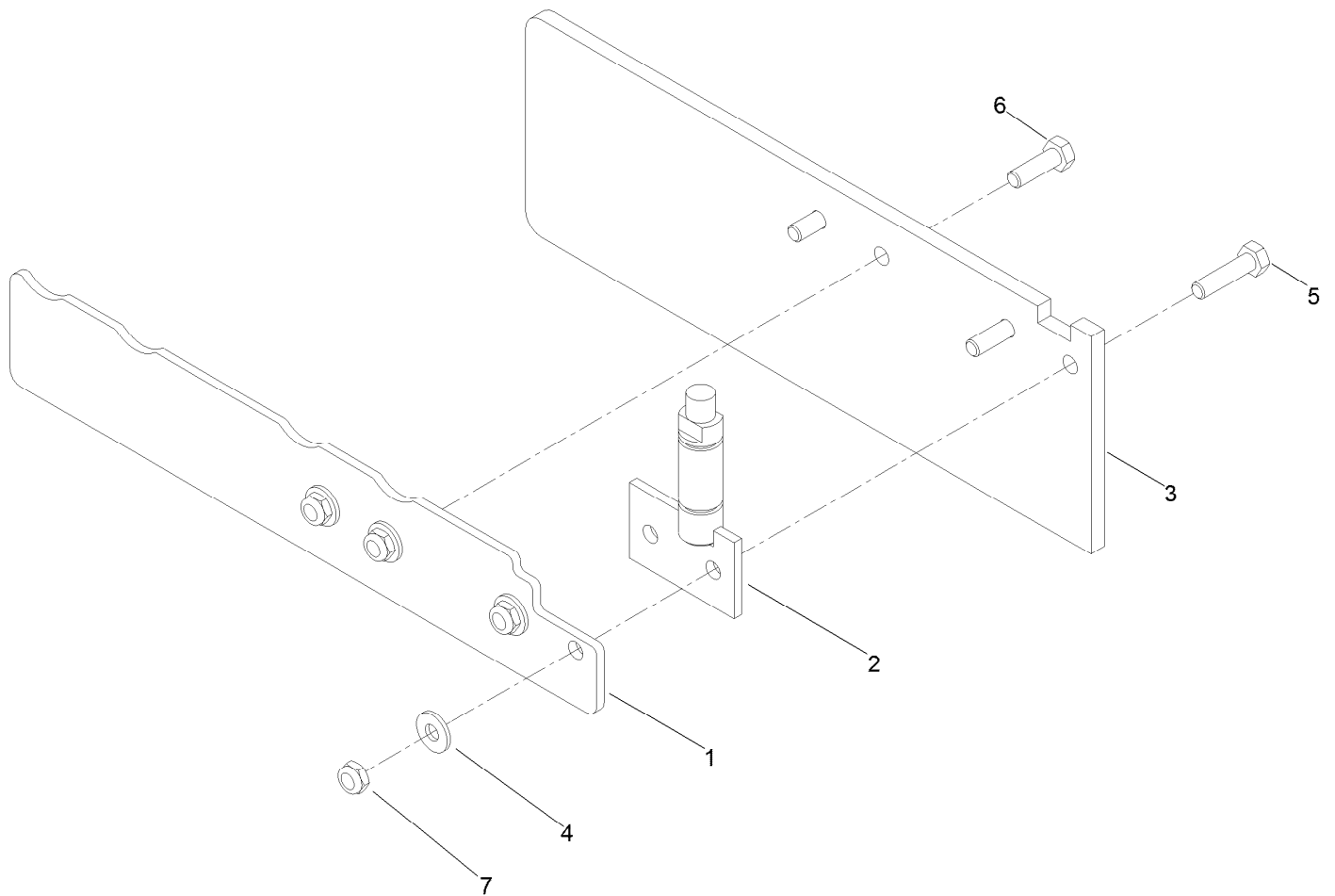
60 Inch Chute Gate Kit Assembly No. 163-4120 (continued)

<i>Ref.</i>	<i>Part Number</i>	<i>Qty.</i>	<i>Description</i>	<i>Ref.</i>	<i>Part Number</i>	<i>Qty.</i>	<i>Description</i>
1	163-4117-01	1	Plate-Mounting	20	132-4749	1	Grip-Lever
2	144-6556-01	1	Bracket-Cover	21	117-0469	1	Rubber Deflector ASM
3	108-2231	1	Block-Detent	22	144-2693	1	ASM-Door
4	138-9753	1	Screw	23	237-65	2	O-Ring
5	87-6620	2	Screw-Tph Thd Form	24	3256-26	1	Washer-Flat
6	144-6557	1	Pin-Pivot	25	3296-45	1	Nut-Hex
7	1-806332	2	Roll Pin, 1/4 X 1-1/2	26	322-50	1	Screw-HH
8	3256-28	2	Washer-Flat	27	104-8300	2	Nut-HF, NI
9	87-3660	1	Spring-Compression	28	105-4622	1	Spacer
10	108-7218	2	Pulley-Top	29	108-4052	1	Spring-Torsion
11	108-7217	2	Pulley-Middle	30	108-7247	1	Tube-Convolutd
12	108-7216	2	Pulley-Bottom	31	3290-378	3	Tie-Cable
13	144-6558	1	Bushing	32	93-3922	1	Mount-Tie, Cable
14	3256-82	2	Washer-Flat	33	120-7950	1	Screw-Torx
15	321-2	2	Screw-HH	34	144-2695-01	1	Baffle-Discharge
16	144-6559	1	Handle-Pivot	35	135-0154-01	1	Baffle-Bagger
17	108-7258	2	Cable	36	3230-16	1	Screw-CARR
18	3231-27	4	Screw-CARR	37	144-6593	1	Decal-Chute Gate
19	104-8301	4	Nut-HF, NI				



Rubber Deflector Assembly No. 117-0469

Ref.	Part Number	Qty.	Description
1	67-5840	1	Nut-Jam
2	108-2241-01	2	Plate-Hinge
3	108-2245-01	1	Deflector
4	117-0470	1	Deflector-Chute, Rubber
5	108-2247-03	1	Strap-Discharge
6	108-7215	1	Hub ASM
7	3231-4	4	Screw-CARR
8	3296-39	4	Nut-Lock, NI



Door Assembly No. 144-2693

Ref.	Part Number	Qty.	Description
1	144-2694-01	1	Plate-Door
2	107-8505	1	Hinge-Gate
3	107-3197	1	Gate-Chute, Rubber
4	3256-2	8	Washer-Flat
5	322-6	2	Screw-HH
6	322-5	2	Screw-HH
7	3296-47	4	Nut-Lock,NI



Count on it.