



417 XT

Garden Tractor

Model No. 72201-230000001 and Up

Parts Catalog

Ordering Replacement Parts

To order replacement parts, please supply: the part number, the quantity, and the description of each part desired.

Understanding Reference Numbers

Each identified part in an illustration has a reference number. The reference number for a part also appears in the parts list, along with other information about the part.

This catalog uses two special reference number formats, one to indicate parts in a service assembly and another to indicate the quantity of a given part in an illustration.

Service Assembly Reference Numbers

Parts in service assemblies have reference numbers in the form **a:b**. The **a** represents the reference number of the entire service assembly and the **b** represents a sequential number unique to each part within the service assembly.

For example, a wheel assembly might be identified by reference number **6**, the tire by **6:1**, the valve by **6:2**, and the wheel by **6:3**. When you order the assembly identified by reference number **6**, you receive all parts identified by reference numbers **6:1**, **6:2**, and **6:3**. However, you may also order any part individually.

Reference numbers of this type appear in illustrations and in part lists.

Reference Numbers Indicating Quantity

In an illustration, if a reference number indicates more than one part, the reference number has the form **nX y**. The **n** represents the quantity of the part, the **X** is the multiplication symbol, and the **y** represents the reference number.

For example, in an illustration, the reference number **2X 37** means that two of the parts identified by reference number **37** are indicated.

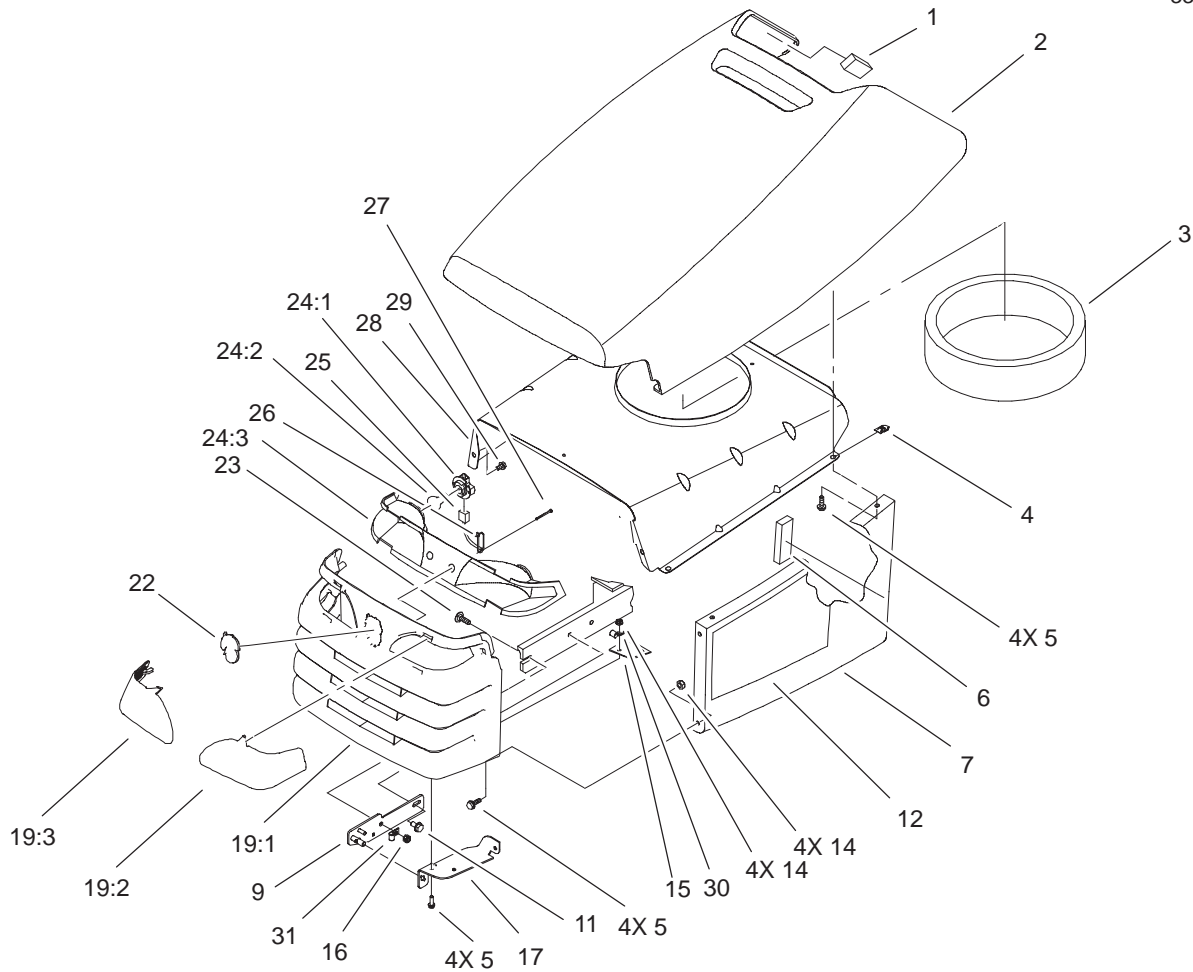
Contents

Description	Page	Description	Page
Hood and Grill Assembly	3	Electrical Schematic	28
Hydro Drive Assembly	4	Cylinder/Crankcase Assembly	
Front Axle and Front Hitch Assembly	5	Kawasaki FH541V-AS04	29
PTO Stop Assembly	6	Piston/Crankshaft Assembly	
Engine and Muffler Assembly	7	Kawasaki FH541V-AS04	30
Battery Assembly	8	Valve/Camshaft Assembly	
Fuel Tank Assembly	9	Kawasaki FH541V-AS04	31
Lower Steering Wheel and Tilt Assembly	10	Lubrication Equipment Assembly	
Steering Wheel and Tilt Assembly	11	Kawasaki FH541V-AS04	32
Hoodstand and Firewall Assembly	12	Cooling Equipment Assembly	
Manual Lift Lever Assembly	13	Kawasaki FH541V-AS04	33
Electric Lift Assembly	14	Electric Equipment Assembly	
Brake Assembly	15	Kawasaki FH541V-AS04	34
Hydro Control Assembly	16	Control Equipment Assembly	
Frame Assembly	17	Kawasaki FH541V-AS04	35
Hydro Transaxle Assembly	18	Carburetor Assembly	
Fender and Footrest Assembly	19	Kawasaki FH541V-AS04	36
Seat Assembly	20	Air Filter/Muffler Assembly	
Dash Assembly	21	Kawasaki FH541V-AS04	37
Rear Wheel Assembly	22	Fuel Tank/Fuel Valve Assembly	
Cruise Control Assembly	23	Kawasaki FH541V-AS04	38
Housing and Fan Assembly	24	Starter Assembly	
Differential Gear Assembly	25	Kawasaki FH541V-AS04	39
Brake Assembly	26	Label Assembly	
Cylinder Block Assembly	27	Kawasaki FH541V-AS04	40

Part Description Abbreviations

Part descriptions in this catalog may include the following abbreviations.

Abbreviation	Meaning	Abbreviation	Meaning
AR	as required	HYD	hydraulic
ASM	assembly	INC	incorporated
CARR	carriage	LH	left hand
DEG	degrees	NI	nylon insert
FH	flat head	PPH	Phillips pan head
GA	gauge	PTH	Phillips truss head
HF	hex flange	PTO	power take off
HH	hex head	RH	right hand
HHF	hex head flange	SFH	slotted fillister head
HLH	hex lag head	SHH	slotted hex head
HJ	hex jam	SQH	square head
HOC	height-of-cut	SHWH	slotted hex washer head
HS	hex socket	SPH	slotted pan head
HSBH	hex socket button head	SRH	slotted round head
HSFH	hex socket flat head	STD	standard
HSH	hex socket head	TAP	self tapping
HWH	hex washer head	TTH	Torx truss head
HWHTF	hex washer head thread forming	WH	wing head



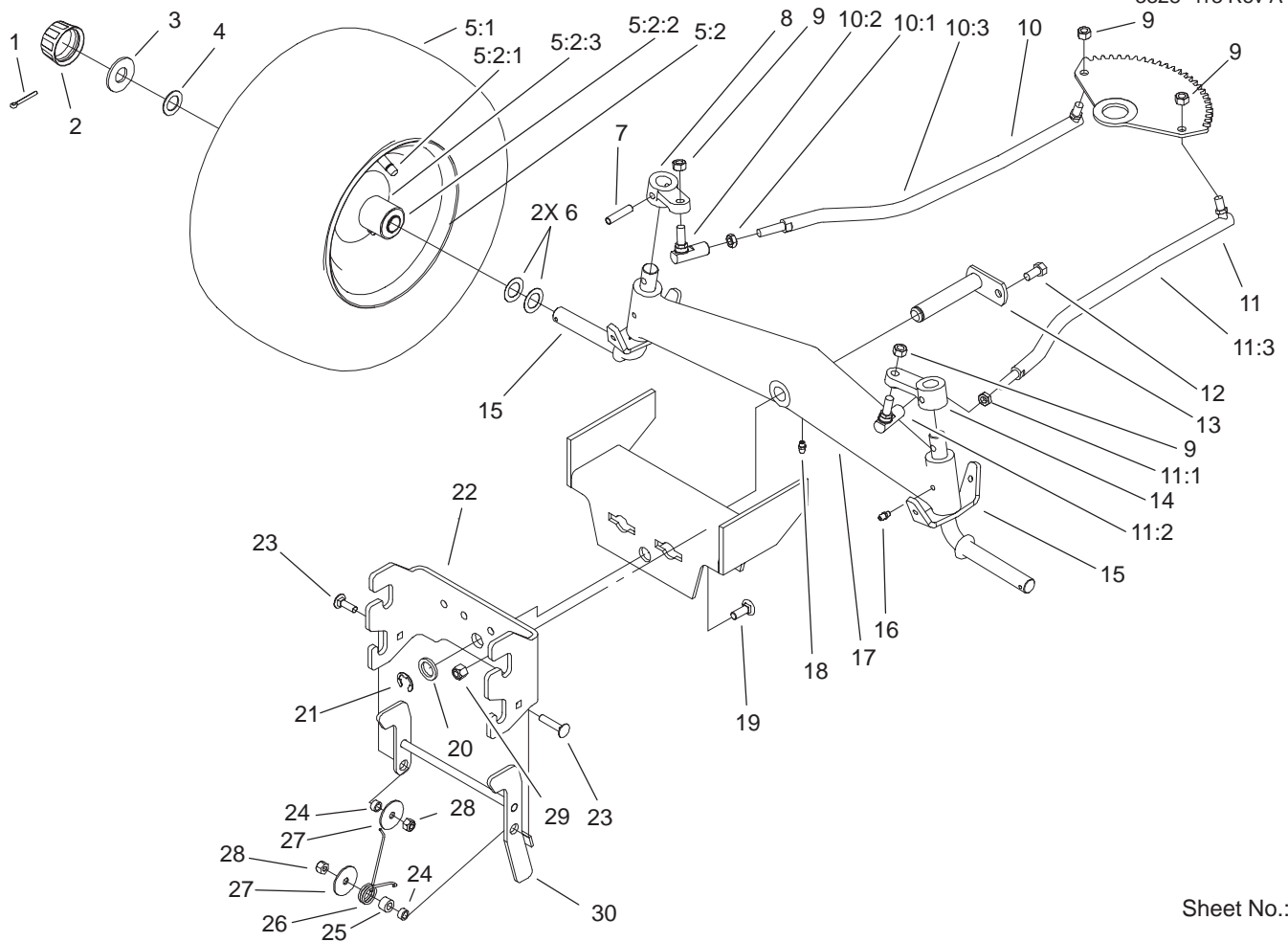
Sheet No.:2

Hood and Grill Assembly

Ref. No.	Part No.	Qty.	Description
1	94-1980	2	Foam-Hood
2	92-6658	1	Hood - Top
3	92-7076	1	Seal-Air Inlet, Twin
4	92-7006	4	Nut
5	32105-15	12	Screw
6	92-7148	2	Foam - Sidepanel
7	92-6652	1	Side-LH Hood
*8	92-6650	1	Side-RH Hood
9	106-5673-03	1	Bracket-Hinge, LH
*10	106-5672-03	1	Bracket-Hinge, RH
11	32144-14	2	Screw-HWH
12	106-5842	1	Decal-Hood LH
*13	106-5843	1	Decal-Hood RH
14	32128-10	8	Locknut-Flange
15	106-5676-03	2	Hinge-Hood
16	3296-29	2	Nut-Lock, NI
17	106-5680-03	1	Bracket-Hood, Hinge, LH
*18	106-5682-03	1	Bracket-Hood, Hinge, RH
*19		1	Xt Grille ASM
19:1	106-5595	1	Grille-Xt
19:2	106-5693	1	Lens-LH, Xt
19:3	106-5692	1	Lens-RH, Xt
22	95-4248	1	Logo-Horsehead
23	3230-16	2	Screw-CARR

Ref. No.	Part No.	Qty.	Description
*24	106-9870	1	Reflector And Lamp ASM
24:1	116262	2	Socket-Headlight
24:2	7228	2	Bulb
24:3	106-9869	1	Reflector
25	106-9890	1	Harness-Wire, Headlights
26	614249	2	Strap-Tie
27	94-6961	2	Screw
28	92-6914-03	1	Baffle-Hood, Upper
29	46-8093	2	Screw-Plastite
30	2412-89	1	Clamp
31	98-2390	1	Clamp - R

* Not illustrated



Sheet No.:4

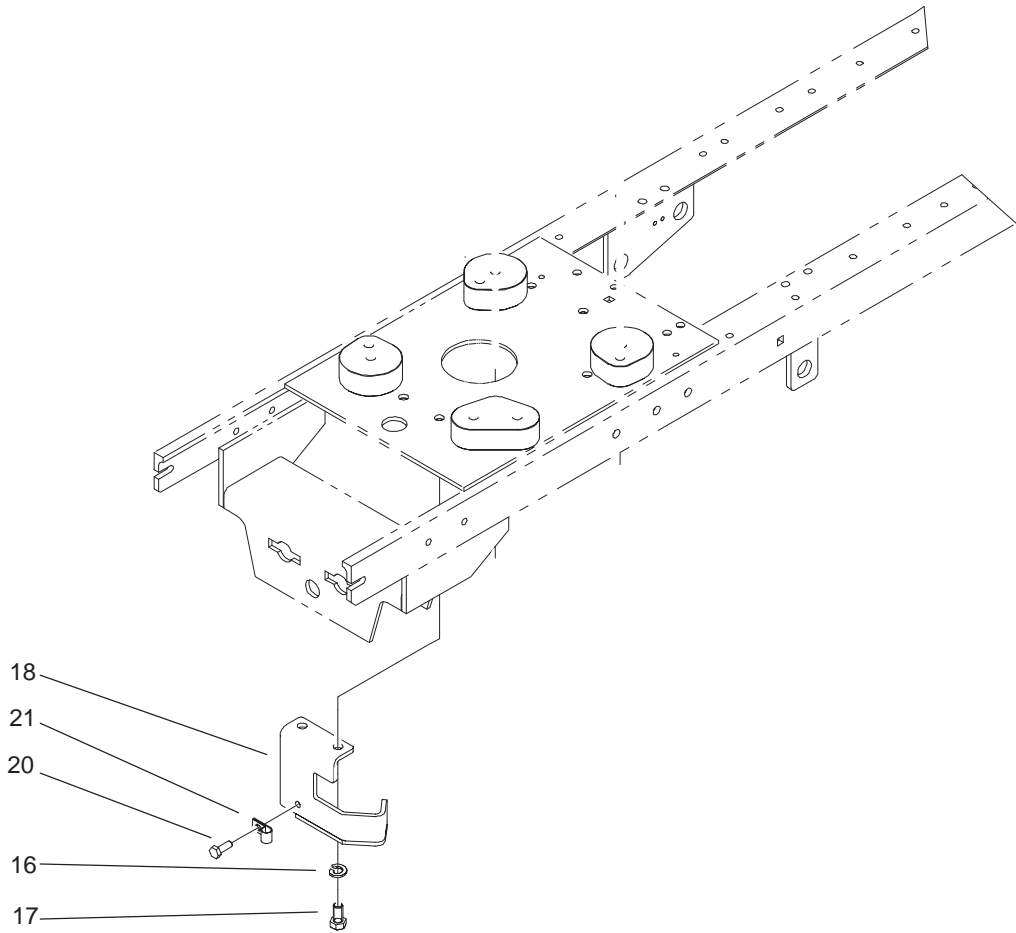
Front Axle and Front Hitch Assembly

Ref. No.	Part No.	Qty.	Description
1	3272-17	2	Pin-Cotter
2	61-9780	2	Cap-Hub
3	28-2480	2	Washer
4	1278	2	Washer
☆5		2	Front Wheel & Tire ASM
5:1	99-2336	1	Tire
5:2	93-9801	1	Wheel ASM
5:2:1	5108	1	Valve
5:2:2	110513	2	Bearing-Wheel
5:2:3	109500	1	Zerk-Grease
*	105293	1	Tube-Inner
6	5210	4	Washer-Shim
7	933270	2	Pin
8	78-1950-03	1	Arm-Front Spindle
9	9150026	4	Nut
10	92-6883	1	Linkage-Steering, RH
10:1	9150854	1	Nut-Jam
10:2	78-2920	1	Ball-Joint
10:3	78-5801	1	Ball Link ASM
11	92-6884	1	Linkage-Steering, LH
11:1	9150854	1	Nut-Jam
11:2	78-2920	1	Ball-Joint
11:3	78-5811	1	Ball Link ASM
12	9267154	1	Screw
13	92-7057-03	1	Pin-Axle

Ref. No.	Part No.	Qty.	Description
14	78-1940-03	1	Arm-Front Spindle
15	78-2601-03	2	Spindle
16	302-5	2	Fitting-Grease
17	78-7960-03	1	Axle-Front
18	302-11	1	Fitting-Lube, 45°
19	3231-25	4	Screw-CARR
20	9202324	1	Washer
21	5618	1	E-Ring
22	106-4044-03	1	Hitch-Front
23	3230-4	2	Screw-CARR
24	92-6998	2	Spacer-Yoke, Right
25	98-4695	1	Spacer
26	106-4048	1	Spring-Torsion
27	3256-68	2	Washer-Flat
28	3296-29	2	Nut-Lock, NI
29	3296-39	4	Nut-Lock, NI
30	106-5637-03	1	Latch ASM

☆ Not serviced separately

* Not illustrated

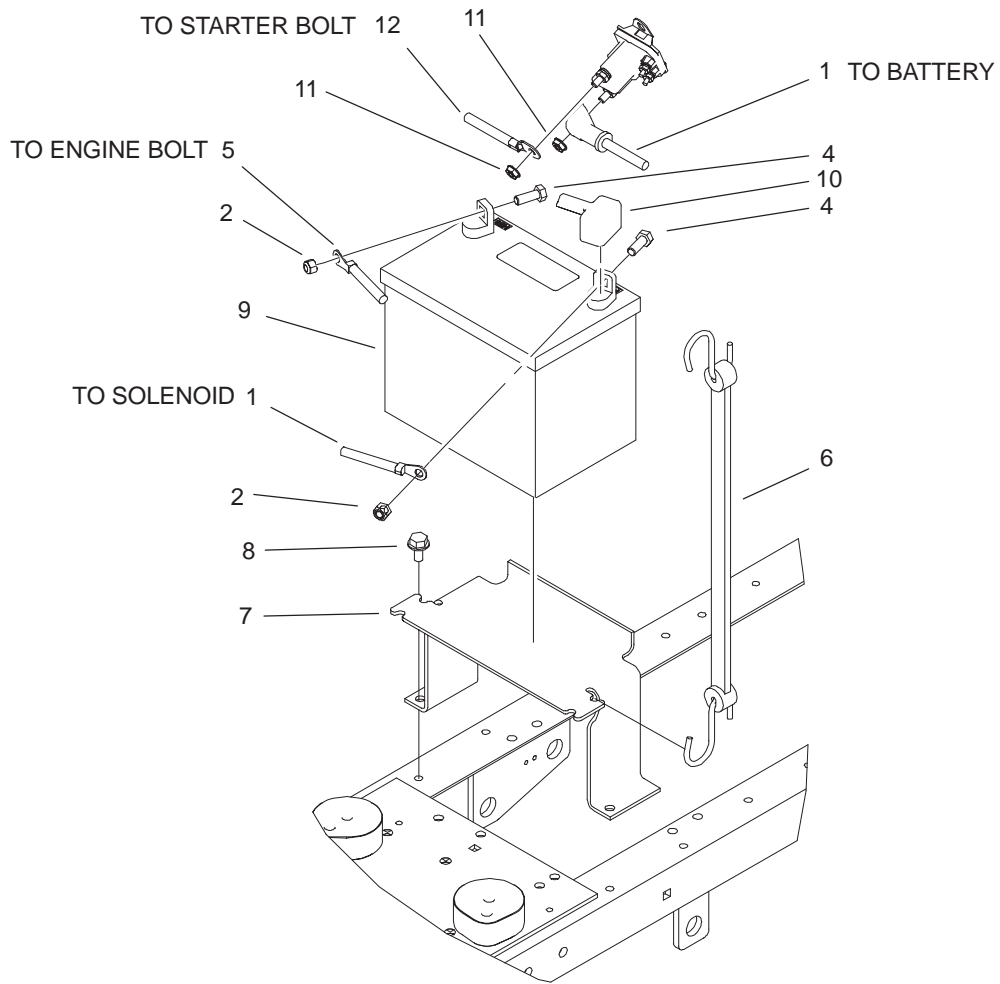


Sheet No.:5

PTO Stop Assembly

Ref. No.	Part No.	Qty.	Description
16	3253-5	2	Washer-Lock
17	323-4	2	Screw-HH
18	106-5685-03	1	PTO Stop ASM
20	32144-4	1	Screw-HWH
21	2412-89	1	Clamp

Ref. No.	Part No.	Qty.	Description

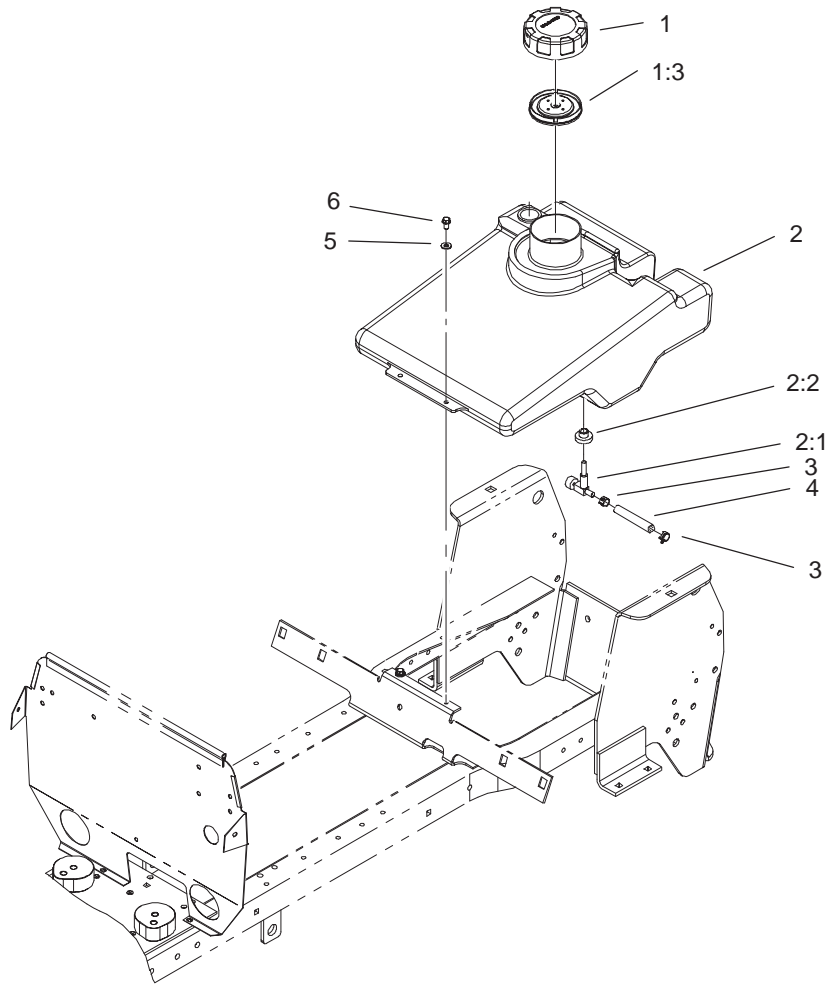


Sheet No.:7

Battery Assembly

Ref. No.	Part No.	Qty.	Description
1	106-8268	1	Cable-Battery, Red
2	3296-29	2	Nut-Lock, NI
4	322-4	2	Screw-HH
5	105-0836	1	Cable-Battery, Black
6	104-2467	1	Hold-Down, Battery
7	104-0812-03	1	Bracket-Battery
8	32144-14	2	Screw-HWH
9	104-2492	1	Battery
10	28-8080	1	Boot-Terminal
11	32149-2	2	Nut
12	106-8269	1	Cable-Battery, Red

Ref. No.	Part No.	Qty.	Description

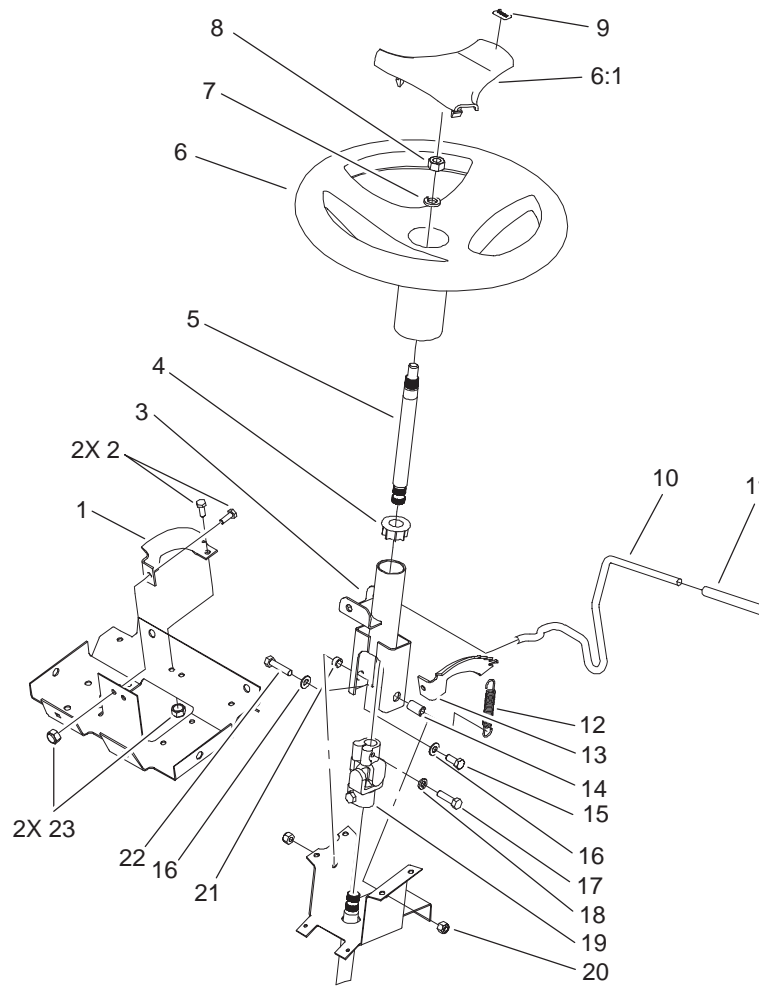


Sheet No.:8

Fuel Tank Assembly

Ref. No.	Part No.	Qty.	Description
1	88-3980	1	Gas Cap ASM
1:3	88-4010	1	Gasket-Cap, Gas
2	94-6928	1	Tank - Gas
2:1	104048	1	Valve-Fuel
2:2	104047	1	Bushing
3	2412-98	2	Clamp
4	7410556	5	Line-Fuel
5	3256-22	2	Washer-Flat
6	32144-4	2	Screw-HWH

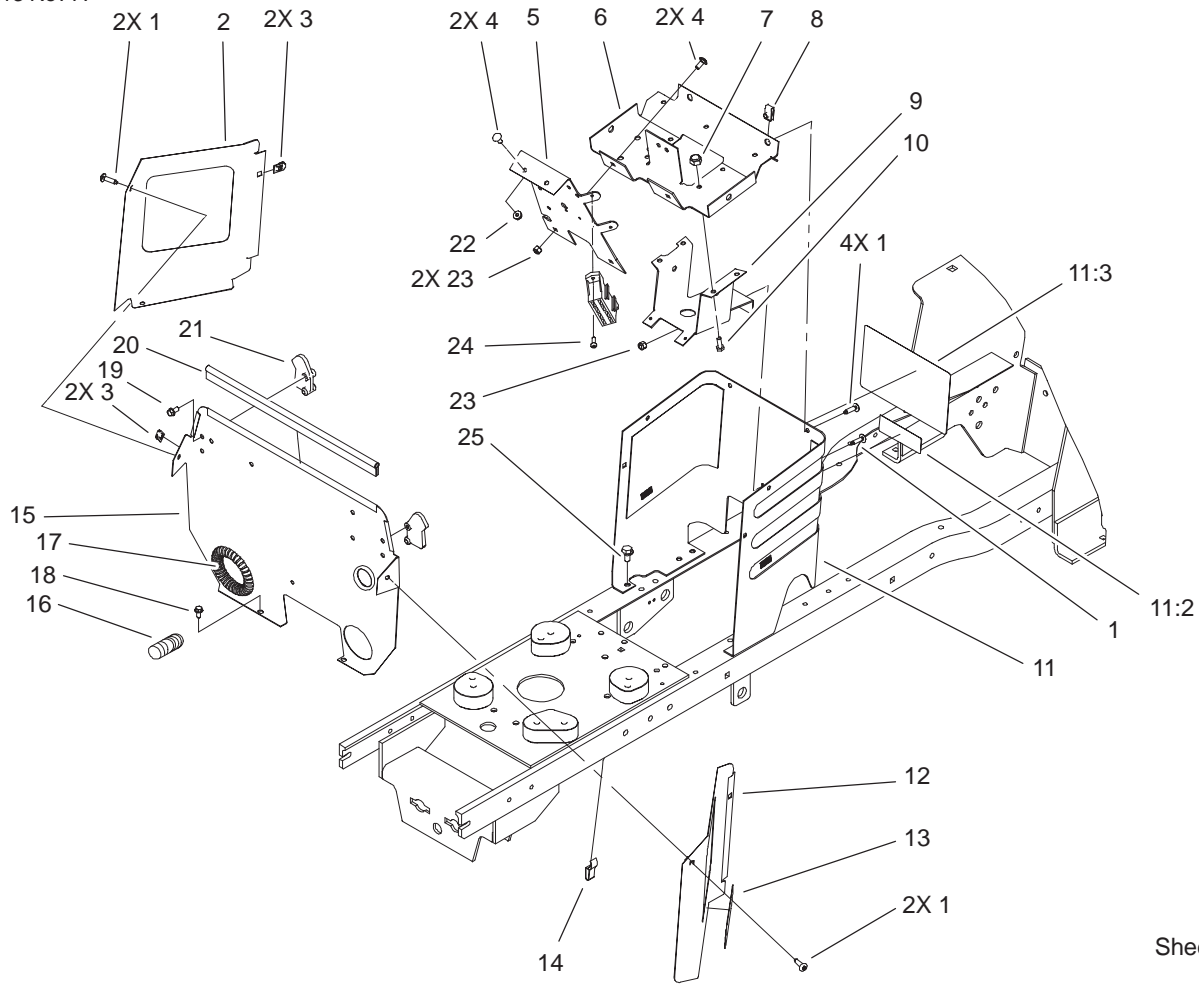
Ref. No.	Part No.	Qty.	Description



Sheet No.:10

Steering Wheel and Tilt Assembly

Ref. No.	Part No.	Qty.	Description	Ref. No.	Part No.	Qty.	Description
1	92-6777-03	1	Bracket – Support Column	22	322-17	1	Screw-HH
2	321-4	4	Screw-HH	23	3296-8	4	Nut-Lock, NI
3	93-1148-03	1	Column				
4	93-1146	1	Bushing-Upper, Steering				
5	94-2874	1	Shaft-Short, Steering				
6	98-1472	1	Wheel – Steering, Toro				
6:1	98-1468	1	Cover-Wheel, Steering				
7	3253-7	1	Washer-Lock				
8	3217-9	1	Nut-Hex				
9	98-1459	1	Decal				
10	92-6971	1	Lever – Tilt				
11	92-6798	1	Cap-Rod, Tilt				
12	93-1357	1	Spring – Extension, Steering				
13	92-6776	1	Bracket – Detent				
14	92-6999	1	Spacer-Yoke				
15	322-3	1	Screw-HH				
16	3256-23	2	Washer-Flat				
17	33114-030	2	Screw-HH				
18	3253-4	2	Washer-Lock				
19	92-6717	1	U Joint – Steering				
20	3296-29	2	Nut-Lock, NI				
21	92-6998	1	Spacer-Yoke, Right				

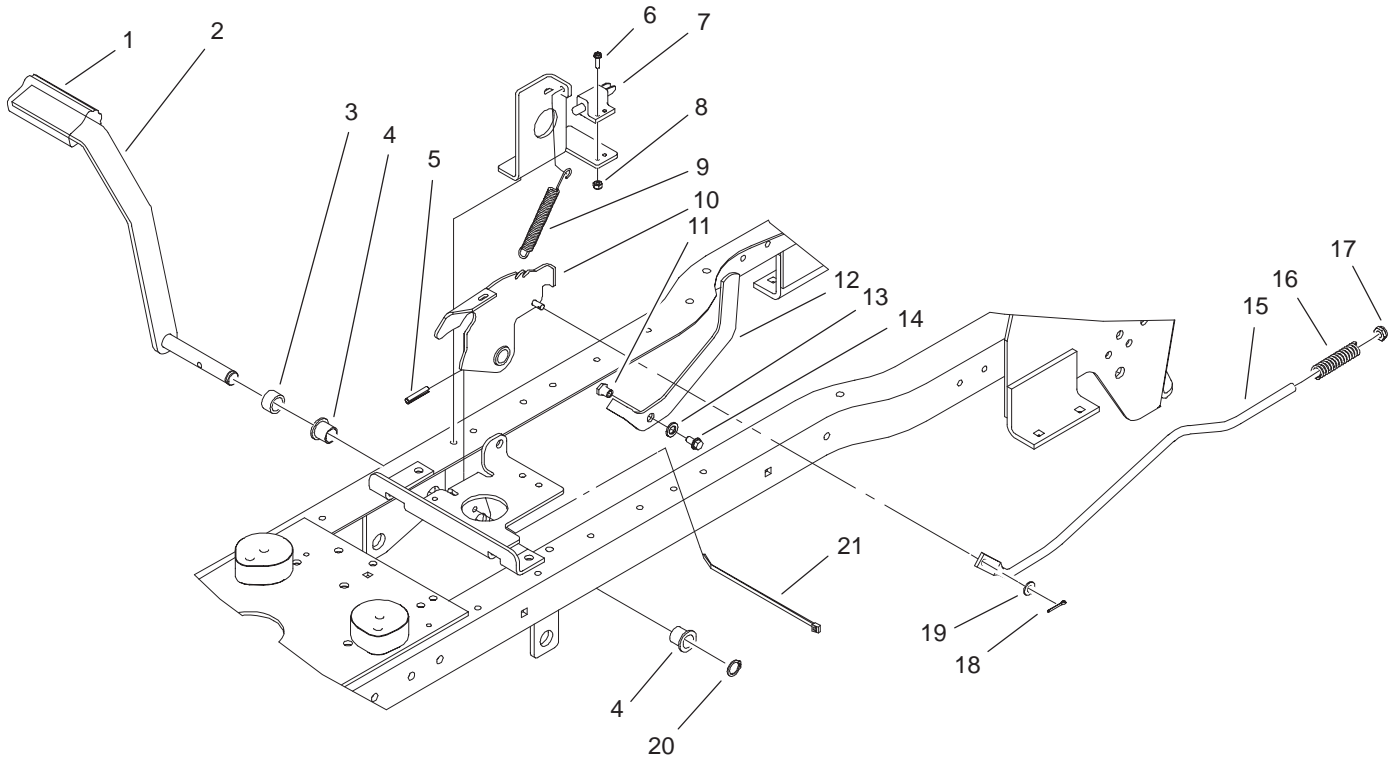


Sheet No.:11

Hoodstand and Firewall Assembly

Ref. No.	Part No.	Qty.	Description
1	92-7020	9	Screw-HH
2	92-6937-03	1	Cover-RH Side
3	92-7006	4	Nut
4	3229-11	4	Screw-CARR
5	106-8246-03	1	Panel-Support, Dash
6	92-6859-03	1	Support - Dash
7	3296-8	4	Nut-Lock, NI
8	107069	4	Clip
9	92-6778-03	1	Bracket-Lower Column
10	321-4	4	Screw-HH
11	106-5576	1	Hoodstand W/Decals ASM
11:2	83-6620	1	Decal - Instruction
11:3	93-0302	1	Decal - Danger
12	92-6936-03	1	Cover-LH Side
13	106-5817	2	Decal-417 Xt
14	212-93	1	Clamp-Casing
15	104-0818-03	1	Firewall
16	106-4147	1	Harness-Wire, 417xt
17	24-7924	2	Cover-Drive Shaft
18	32144-4	2	Screw-HWH
19	46-8093	2	Screw-Plastite
20	93-1131	1	Trim-Seal Firewall
21	92-6960	2	Latch - Hood
22	32149-2	2	Nut

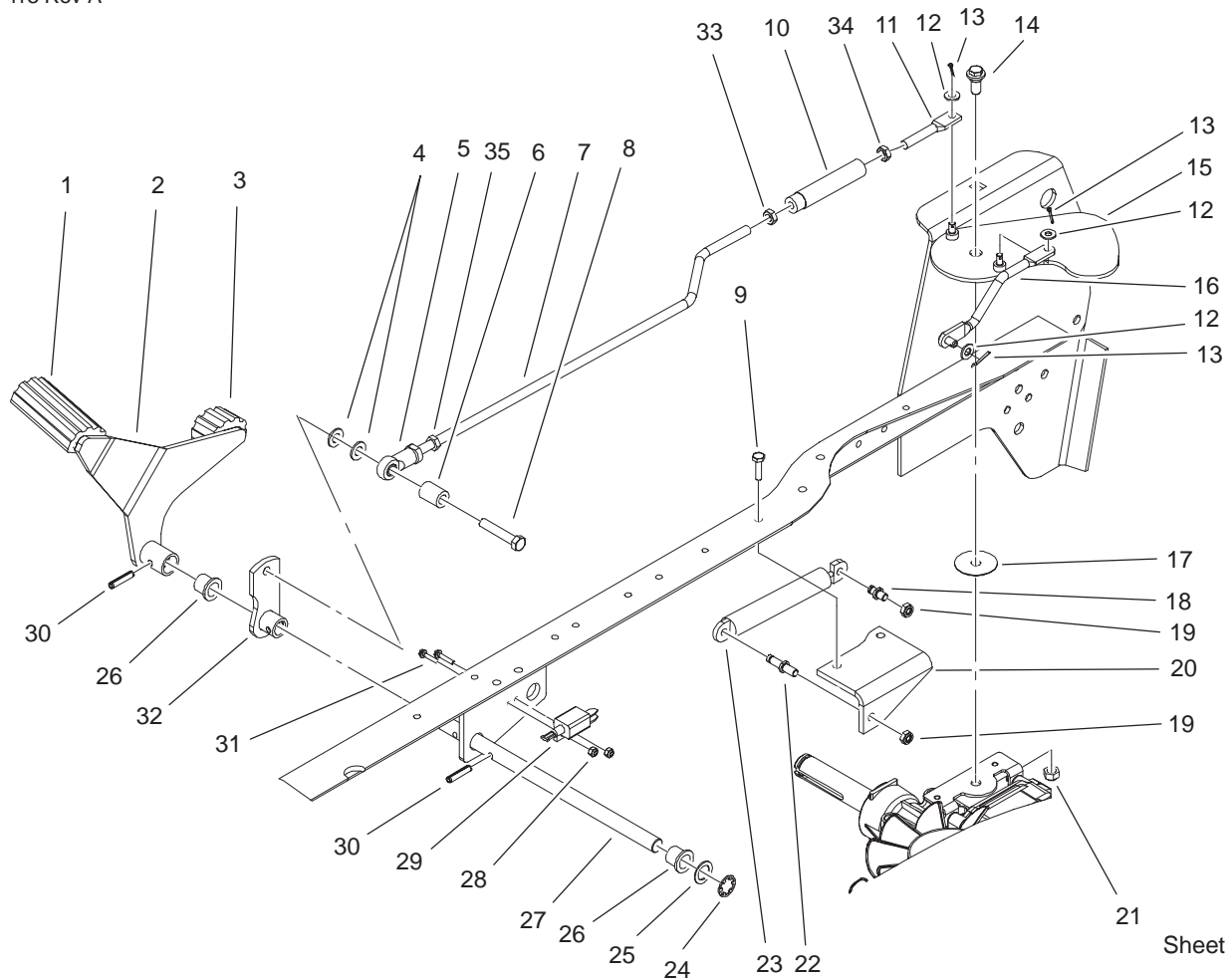
Ref. No.	Part No.	Qty.	Description
23	3296-42	3	Nut-Lock, NI
24	32144-8	2	Screw-HH
25	32144-14	2	Screw-HWH



Sheet No.:14

Brake Assembly

Ref. No.	Part No.	Qty.	Description	Ref. No.	Part No.	Qty.	Description
1	65-2920	1	Pad-Pedal				
2	106-4068-03	1	Brake Pedal ASM				
3	92-6982	1	Spacer - Brake				
4	256-90	2	Bushing-Flange				
5	32121-69	1	Pin-Spring				
6	3290-392	2	Screw-HHF				
7	86-4690	1	Switch-Interlock				
8	3296-1	2	Nut-Lock, NI				
9	93-0540	1	Spring - Extension				
10	106-4069	1	Brake ASM				
11	47-4990	1	Post-Linkage Mounting				
12	106-4075	1	Lever, Brake-Parking				
13	106-5592	1	Spacer-Brake, Parking				
14	3234-13	1	Screw-HHF				
15	106-5621	1	Rod-Brake				
16	104-0837	1	Spring-Compression				
17	3296-5	1	Nut-Lock, NI				
18	3272-6	1	Pin-Cotter				
19	3256-22	1	Washer-Flat				
20	32151-62	1	Ring-Retaining				
21	614249	1	Strap-Tie				

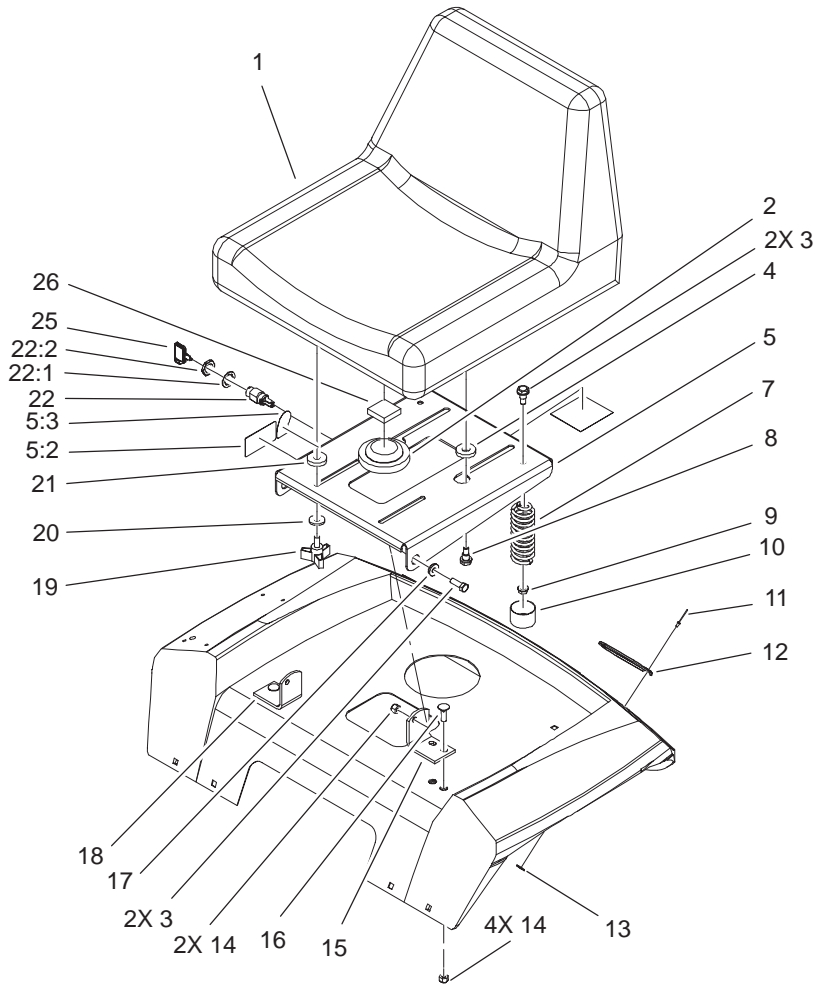


Sheet No.:15

Hydro Control Assembly

Ref. No.	Part No.	Qty.	Description
1	92-6902	1	Pad-Pedal
2	106-5649-03	1	Hydro Pedal ASM,
3	92-6903	1	Pad-Pedal
4	3256-24	2	Washer-Flat
5	92-7008	1	End-Rod, Female
6	106-5620	1	Tube-Interlock
7	106-5613	1	Rod-Hydro
8	323-10	1	Screw-HH
9	32144-70	1	Screw-HH
10	95-1504	1	Turnbuckle
11	106-5690	1	Link-Hydro
12	3256-23	3	Washer-Flat
13	3272-6	3	Pin-Cotter
14	94-7582	1	Bolt - Shoulder
15	106-5579	1	Cruise Plate ASM
16	106-5577	1	Bell Crank Rod ASM
17	94-7575	1	Spacer - Cruise
18	100-6056	1	Arm-Control, Pin Damper
19	3296-20	2	Nut-Lock, NI
20	106-8247-03	1	Bracket-Damper
21	108881	1	Nut
22	100-6057	1	Pin-Damper Bracket
23	100-8732	1	Damper-Gas
24	32151-40	1	Ring-Retaining
25	3256-29	1	Washer-Flat

Ref. No.	Part No.	Qty.	Description
26	256-90	2	Bushing-Flange
27	106-5648	1	Shaft-Pivot, Hydro
28	3296-1	2	Nut-Lock, NI
29	106-4145	1	Switch-Adjustable, Nc
30	32121-69	2	Pin-Spring
31	32105-29	2	Screw-SHWH
32	106-5560-03	1	Hydro Link ASM
33	3220-3	1	Nut-Jam
34	106-8248	1	Nut-Jam, Hex LH
35	3218-3	1	Nut-Jam

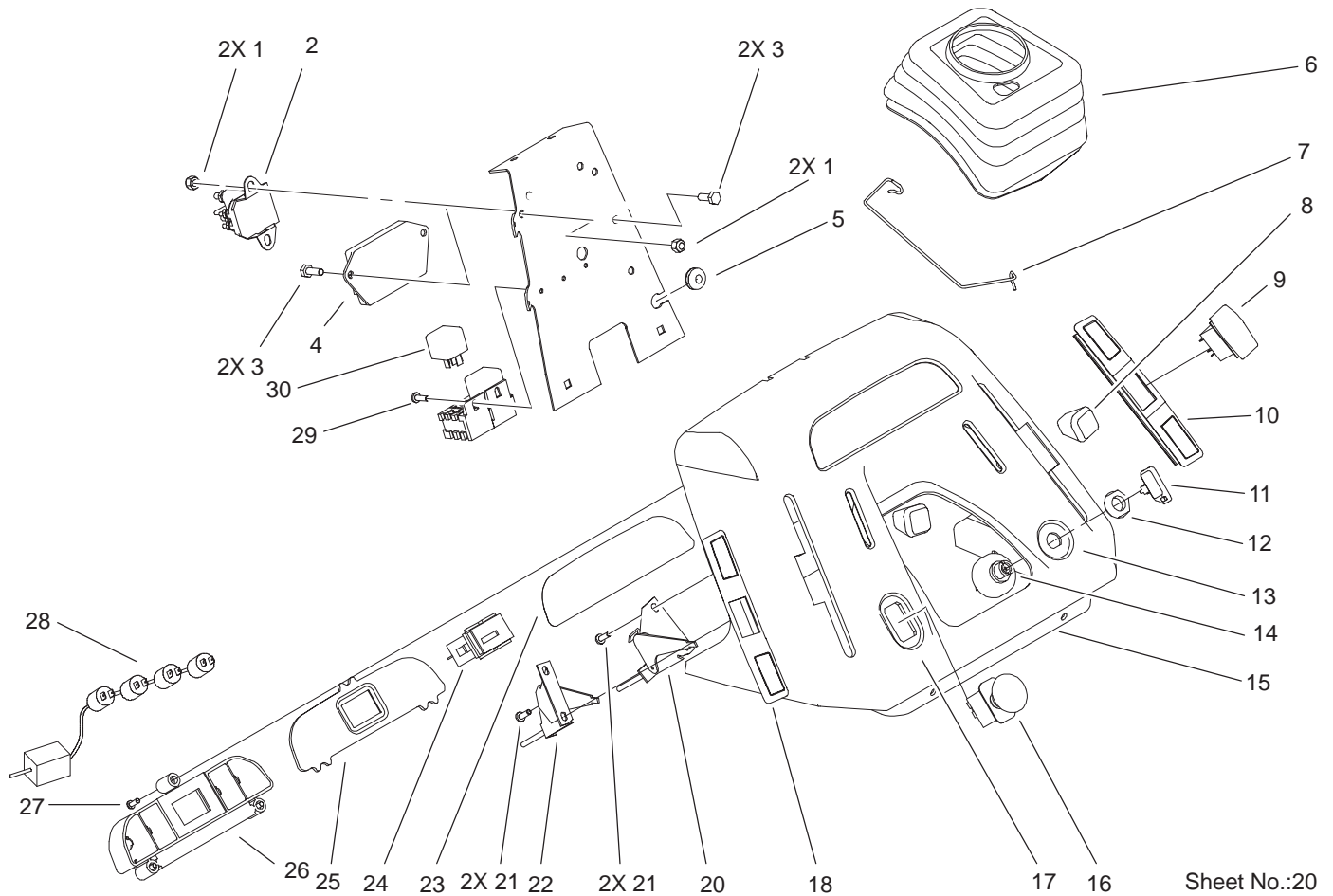


Sheet No.:19

Seat Assembly

Ref. No.	Part No.	Qty.	Description
1	104-2463	1	Seat-High Back
2	100-3524	1	Switch-Seat
3	322-5	4	Screw-HH
4	92-6750	2	Spacer-Nylon
5	104-5027	1	Support Seat ASM
5:2	99-2985	1	Danger-Decal
5:3	99-5339	1	Decal
7	92-7054	2	Spring-Compression
8	92-6986	2	Bolt-Shoulder
9	32128-25	2	Nut-Flange
10	701178	2	Cap-Protector
11	3290-282	4	Rivet-Pop, Steel
12	106557	2	Reflector-Stick On
13	3256-49	4	Washer-Flat
14	3296-29	6	Nut-Lock, NI
15	79-0950-03	1	Bracket-Pivot, RH
16	3230-31	4	Screw-CARR
17	105503	2	Bushing
18	79-0970-03	1	Bracket-Pivot LH
19	700806	2	Knob
20	94-2869	2	Washer
21	109989	2	Spacer-Nylon
22	46-5780	1	Switch-Starter
22:1	3254-5	1	Washer-Tooth
22:2	218-461	1	Nut-HH

Ref. No.	Part No.	Qty.	Description
25	62-7770	1	Key-Ignition
26	104-2488	1	Foam-Switch, Seat

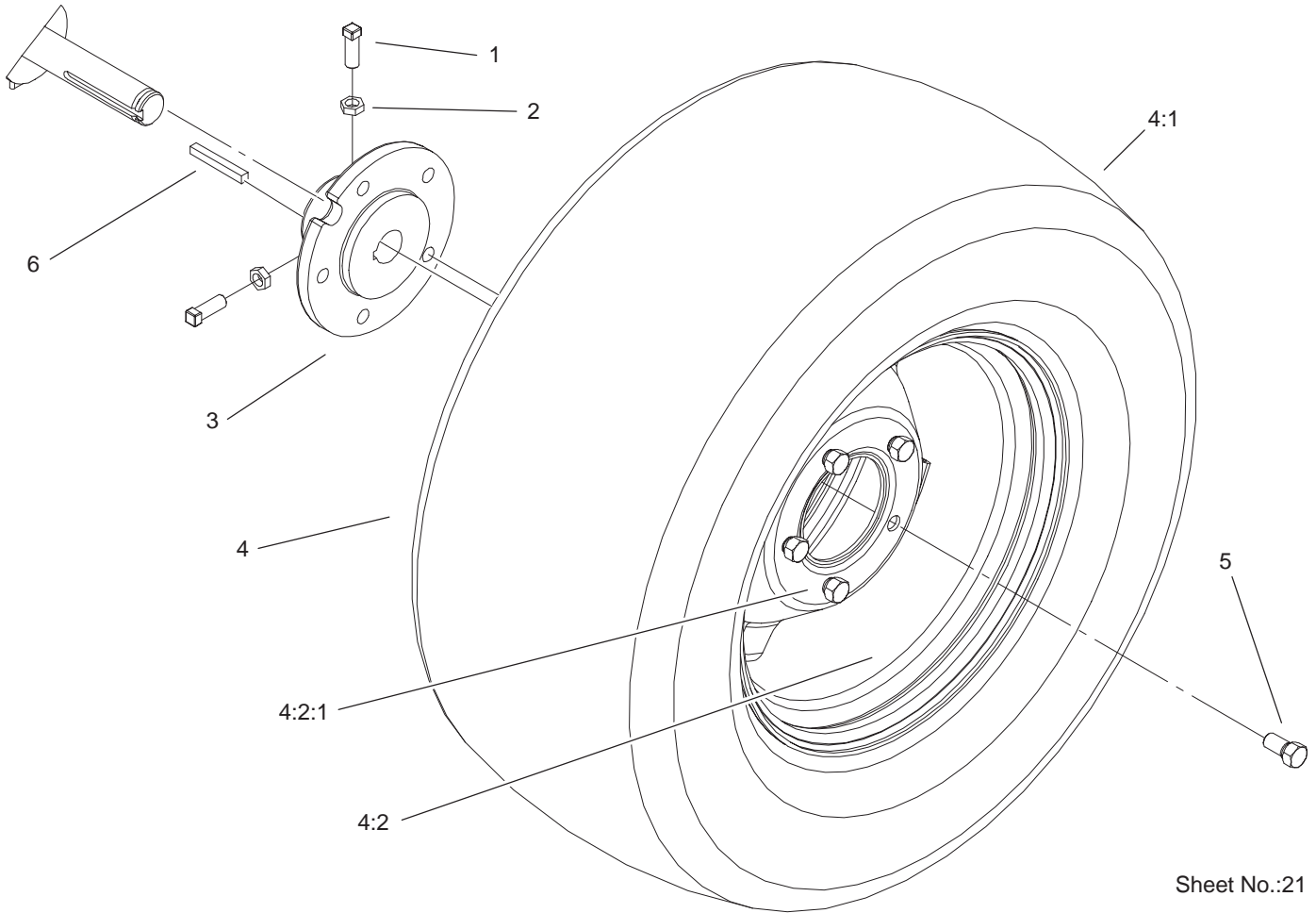


Sheet No.:20

Dash Assembly

Ref. No.	Part No.	Qty.	Description
1	3296-42	4	Nut-Lock, NI
2	106-8245	1	Solenoid
3	321-4	4	Screw-HH
4	106-8225	1	Module-Nmir, Low Battery
5	237-141	1	Grommet-Rubber
6	92-6680	1	Boot-Steering
7	94-2966	1	Clip - Boot
8	66-0120	2	Knob
9	93-0527	1	Switch - Cruise
10	93-0516	1	Cover - RH Slot
11	62-7770	1	Key-Ignition
12	700919	1	Nut
13	92-6721	1	Decal - Throttle, Ignition
14	92-6785	1	Switch-Ignition
15	94-1894	1	Dash
16	93-9998	1	Switch-PTO
17	92-6720	1	Decal - PTO/Choke
18	92-6797	1	Cover - Slot, LH
20	92-6784	1	Control-Throttle Twin
21	32144-32	4	Screw
22	106-9872	1	ASM-Control, Choke
23	99-8036	1	Decal - Dash Lens
24	94-4208	1	Hourmeter
25	92-6705	1	Lens - Dash

Ref. No.	Part No.	Qty.	Description
26	92-6732	1	Housing - Indicator Light
27	94-6961	3	Screw
28	99-8068	1	Harness-4 Lamp
29	32144-8	2	Screw-HH
30	98-7249	3	Relay



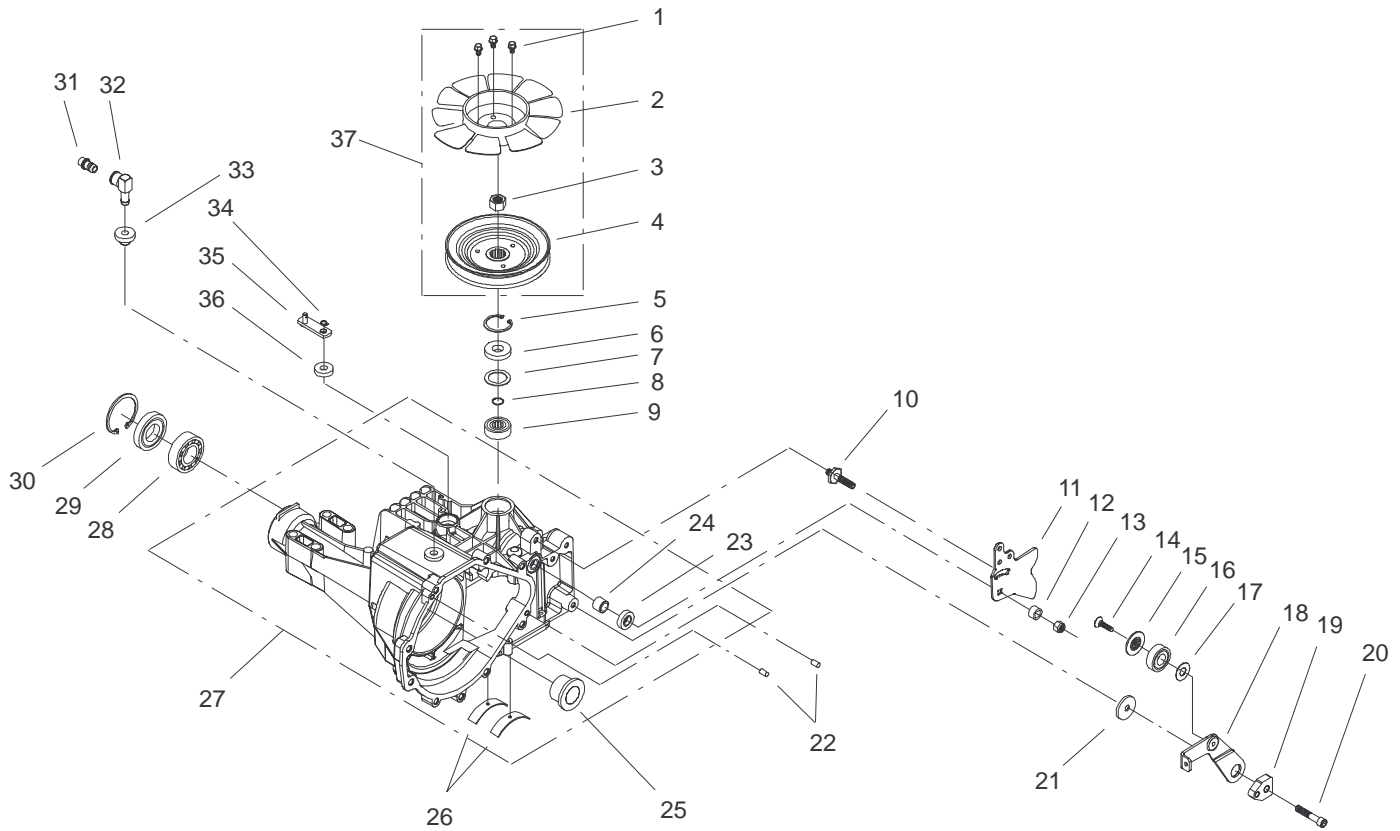
Sheet No.:21

Rear Wheel Assembly

Ref. No.	Part No.	Qty.	Description
1	3243-5	4	Screw-Set
2	3218-3	4	Nut-Jam
3	93-3659-03	2	Hub-Wheel
☆4		2	Rear Wheel & Tire ASM
4:1	99-2334	1	Tire
4:2	78-1221	1	Wheel
4:2:1	5108	1	Valve
*	7007	1	Tube-Inner
5	83-2720	10	Bolt-Lug
6	5-1336	2	Key-Square

Ref. No.	Part No.	Qty.	Description

☆ Not serviced separately
 * Not illustrated

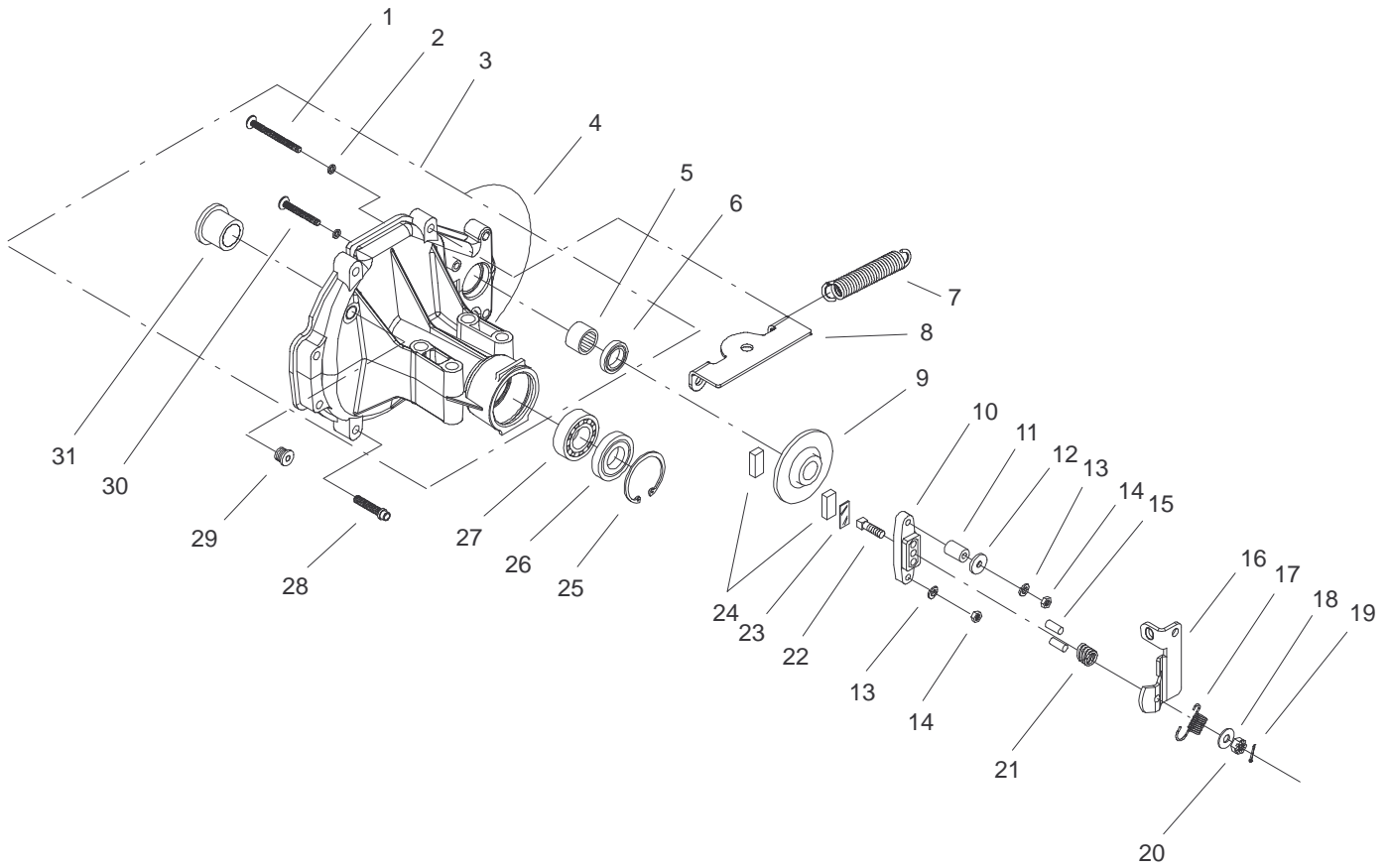


Sheet No.:3

Housing and Fan Assembly

Ref. No.	Part No.	Qty.	Description
1	104-2164	3	Screw
2	104-2162	1	Fan
3	104-2168	1	Nut-Hex
4	104-2161	1	Pulley
5	94-1903	1	Ring - Retaining
6	92-6543	1	Seal - Lip
7	104-2104	1	Spacer
8	94-1902	1	Ring - Wire Retaining
9	94-1904	1	Bearing - Shaft Ball
10	104-2116	1	Stud
11	100-6093	1	Arm-Control
12	104-2163	1	Spacer, Trunnion
13	104-2159	1	Nut-Hex Lock
14	104-2158	1	Screw-Countersunk
15	104-2157	1	Spacer-Locating
16	104-2156	1	Bearing
17	94-1933	1	Washer
18	104-2114	1	Arm-Return
19	104-2119	1	Puck-Adjusting
20	104-2155	1	Screw
21	104-2154	1	Washer
22	104-2170	2	Pin
23	92-6544	1	Seal - Lip
24	104-2113	1	Trunnion Bushing
25	104-2139	2	Bearing-Flange
26	94-1905	2	Bearing - Cradle

Ref. No.	Part No.	Qty.	Description
27	104-2101	1	Main Housing ASM
28	104-2143	2	Bearing-Ball
29	104-2144	2	Seal
30	104-2169	2	Ring-Retaining
31	104-2167	1	Cap ASM-Vent
32	104-2166	1	Fitting
33	104-2165	1	Bushing, Rubber
34	936109	1	Ring - Retaining
35	104-2117	1	Arm-Bypass
36	92-6545	1	Seal - Lip
37	104-2190	1	Kit-Fan/Pulley

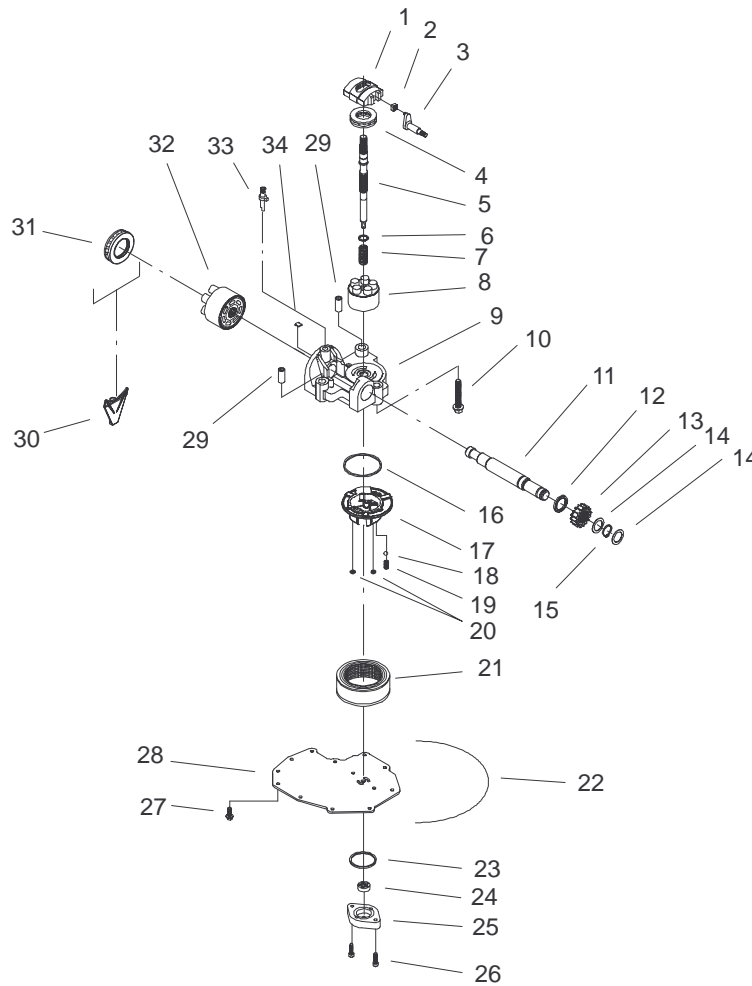


Sheet No.:5

Brake Assembly

Ref. No.	Part No.	Qty.	Description
1	104-2182	1	Bolt
2	104-2191	4	O-Ring
3	104-2102	1	RH Housing ASM
4	104-2147	1	Sealant
5	104-2149	1	Bearing-Needle
6	104-2152	1	Seal-Lip
7	104-2118	1	Spring-Return
8	100-1349	1	Bracket-Bell Crank *B
9	104-2153	1	Disk-Brake
10	104-2173	1	Yoke-Brake
11	104-2180	1	Spacer
12	104-2183	1	Washer
13	104-2177	2	Washer-Lock
14	104-2178	2	Nut
15	104-2176	2	Pin-Brake
16	104-0841	1	Arm-Brake
17	104-2184	1	Spring-Brake Arm
18	104-2146	1	Washer
19	104-2179	1	Pin-Cotter
20	93-3807	1	Nut - Castle
21	104-2188	1	Spring-Brake, Anti Drag
22	104-2174	1	Bolt-SQH
23	104-2181	1	Puck-Plate
24	104-2171	2	Puck-Brake
25	104-2169	2	Ring-Retaining

Ref. No.	Part No.	Qty.	Description
26	104-2144	2	Seal
27	104-2143	2	Bearing-Ball
28	104-2148	9	Screw-TTH
29	104-2189	1	Plug, Straight Thread
30	104-2172	1	Bolt
31	104-2139	2	Bearing-Flange

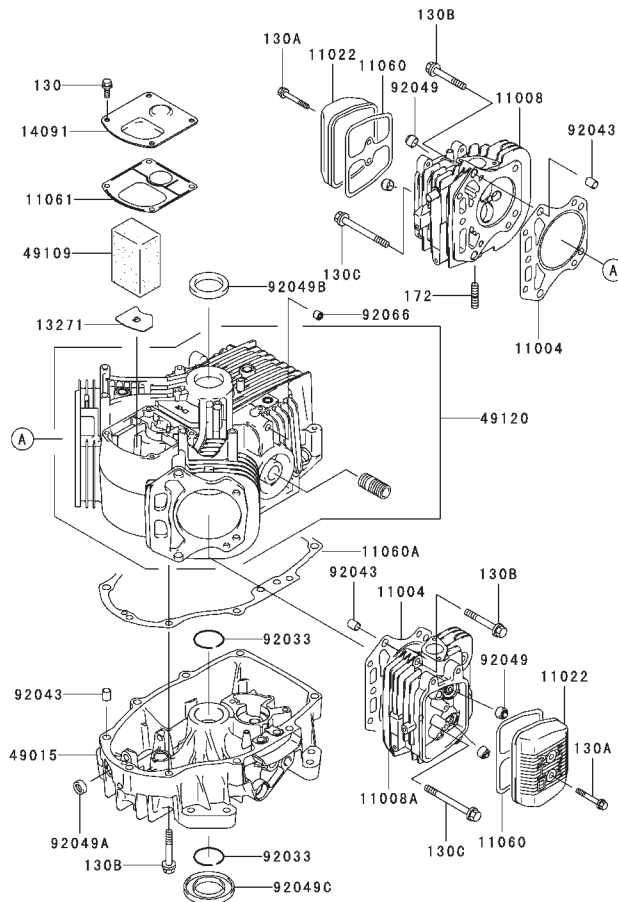


Sheet No.:6

Cylinder Block Assembly

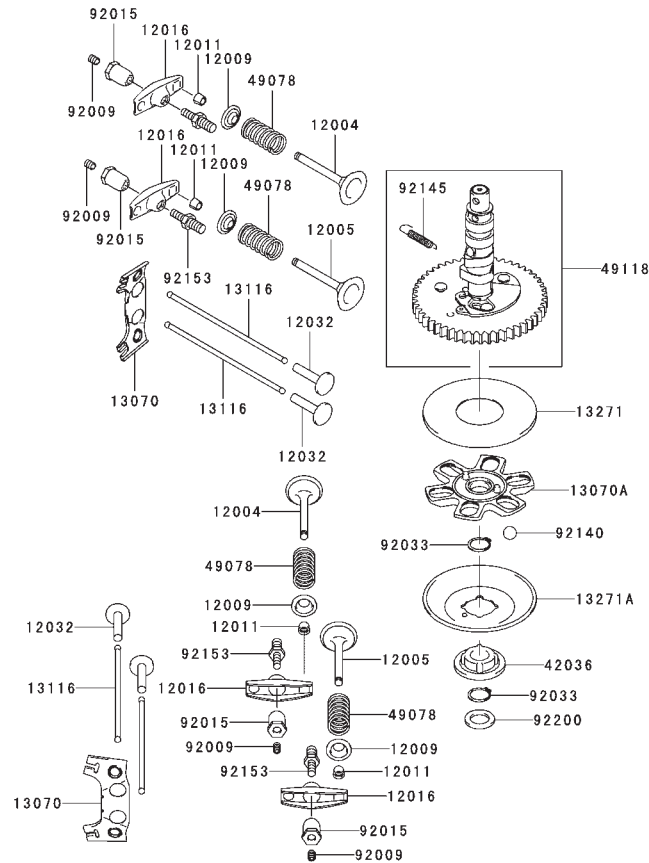
Ref. No.	Part No.	Qty.	Description
1	94-1907	1	Swashplate – Variable
2	94-1910	1	Guide – Slot
3	104-2112	1	Trunnion ASM
4	94-6922	1	Bearing – Thrust
5	104-2105	1	Shaft–Input
6	94-1937	1	Washer – Block Thrust
7	94-1936	1	Spring – Block
8	104-2106	1	Cylinder Block ASM
9	104-2103	1	Kit, Center Section
10	94-6926	3	Bolt
11	104-2107	1	Shaft–Output
12	104-2109	1	Spacer
13	104-2110	1	Gear–Pinion, 16t
14	104-2150	2	Washer
15	104-2151	1	Ring–Retaining
16	104-2185	1	O–Ring
17	104-2156	1	Bearing
18	104-2187	1	Ball
19	104-2186	1	Spring, Relief
20	104-2191	4	O–Ring
21	104-2125	1	Filter
22	104-2147	1	Sealant
23	104-2123	1	O–Ring
24	104-2122	1	Gerotor ASM
25	104-2124	1	Gerotor Cover
26	104-2111	2	Capscrew

Ref. No.	Part No.	Qty.	Description
27	104-2120	11	Screw
28	104-2121	1	Cover–Lower
29	94-1927	2	Pin
30	104-2127	1	Retainer–Motor Bearing
31	94-6923	1	Bearing – Thrust
32	94-1913	1	Cylinder Block ASM
33	94-1914	1	Actuator – Bypass
34	94-6925	1	Plate – Bypass



Cylinder/Crankcase Assembly Kawasaki FH541V-AS04

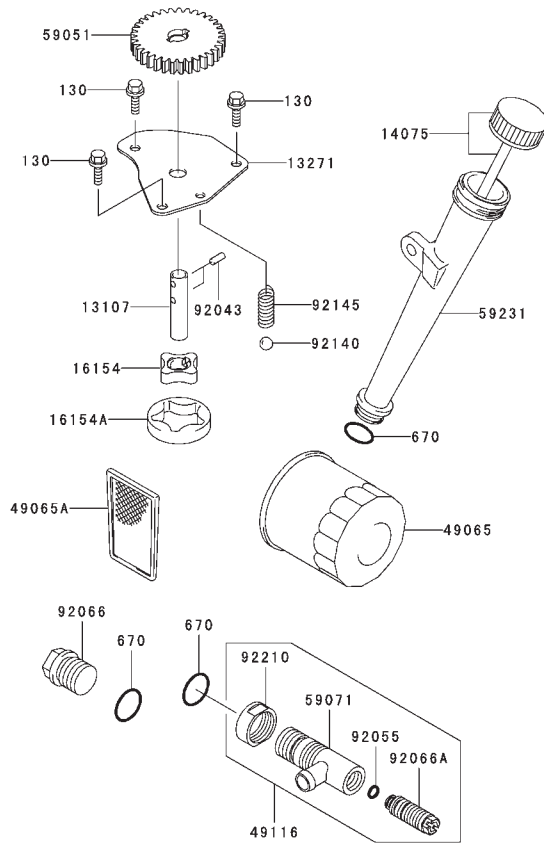
Ref. No.	Part No.	Qty.	Description	Ref. No.	Part No.	Qty.	Description
11004	11004-7010	2	Gasket-Head	172	172G0818	4	Bolt-Stud
11008	11008-6042	1	Head-Comp-Cylinder				
11008A	11008-7009	1	Head-Comp-Cylinder				
11022	11022-7003	2	Case-Rocker				
11060	11060-7001	2	Gasket,Rocker Case				
11060A	11060-7008	1	Gasket,Crankcase Cover				
11061	11061-7001	1	Gasket,Breather				
13271	13271-7016	1	Plate				
14091	14091-7006	1	Cover				
49015	49015-6253	1	Cover-Crankcase				
49109	49109-7002	1	Element-Breather				
49120	49120-7023	1	Crankcase-Comp				
92033	92033-7003	2	Ring-Snap				
92043	92043-7001	6	Pin				
92049	92049-7001	4	Seal-Oil				
92049A	92049-7005	1	Seal-Oil				
92049B	92049-7010	1	Seal-Oil				
92049C	92049-7011	1	Seal-Oil				
92066	92066-7002	1	Plug				
130	130B0612	4	Bolt-Flanged				
130A	130B0640	4	Bolt-Flanged				
130B	130T0850	17	Bolt-Flanged				
130C	130T0875	2	Bolt-Flanged				



Valve/Camshaft Assembly Kawasaki FH541V-AS04

Ref. No.	Part No.	Qty.	Description
12004	12004-7003	2	Valve-Intake
12005	12005-7003	2	Valve-Exhaust
12009	12009-7001	4	Retainer-Valve Spring
12011	12011-2056	8	Collet
12016	12016-7001	4	Arm-Rocker
12032	12032-7001	4	Tappet
13070	13070-7001	2	Guide
13070A	13070-7004	1	Guide
13116	13116-2057	4	Rod-Push
13271	13271-7007	1	Plate
13271A	13271-7021	1	Plate
42036	42036-7009	1	Sleeve
49078	49078-7001	4	Spring-Engine Valve
49118	49118-7004	1	Camshaft-Comp
92009	92009-2341	4	Screw
92015	92015-2253	4	Nut
92033	92033-7001	2	Ring-Snap
92140	92140-7002	6	Ball
92145	92145-7001	1	Spring
92151A	92151-7019	4	Bolt
92200	92200-7001	1	Washer

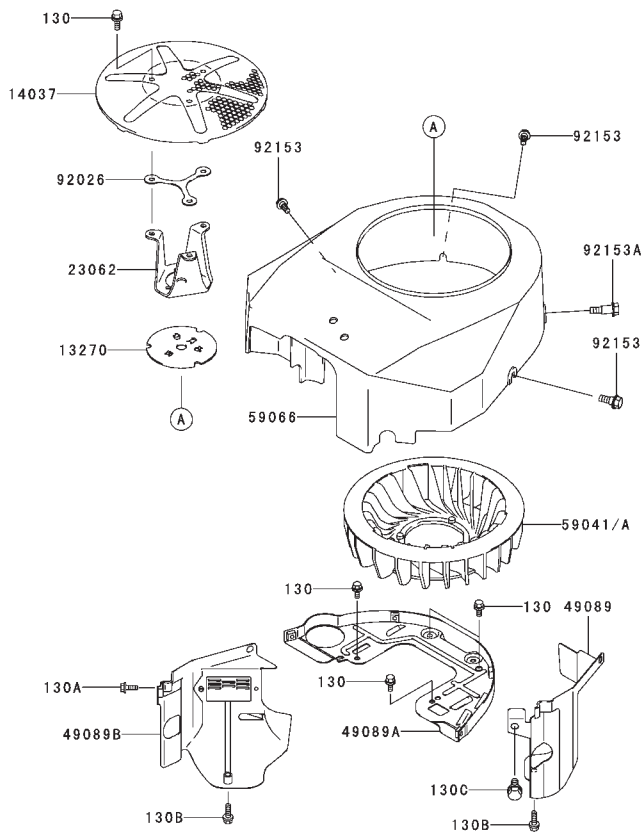
Ref. No.	Part No.	Qty.	Description



Lubrication Equipment Assembly Kawasaki FH541V-AS04

Ref. No.	Part No.	Qty.	Description
13107	13107-7009	1	Shaft
13271	13271-7017	1	Plate
14075	14075-7009	1	Cap-Assy
16154	16154-2053	1	Rotor-Pump,In
16154A	16154-2054	1	Rotor-Pump,Out
49065	49065-2078	1	Filter-Oil
49065A	49065-7004	1	Filter-Oil
49116	49116-7001	1	Valve-Assy
59051	59051-7011	1	Gear-Spur
59071	59071-7008	1	Joint
59231	59231-7005	1	Filler
92043	92043-7003	2	Pin
92055	92055-7002	1	Ring-O, 6mm
92066	92066-7003	1	Plug
92066A	92066-7007	1	Plug
92140	92140-7003	1	Ball
92145	92145-7002	1	Spring
92210	92210-7012	1	Nut
130	130B0612	3	Bolt-Flanged
670	670D2016	3	O Ring,16mm

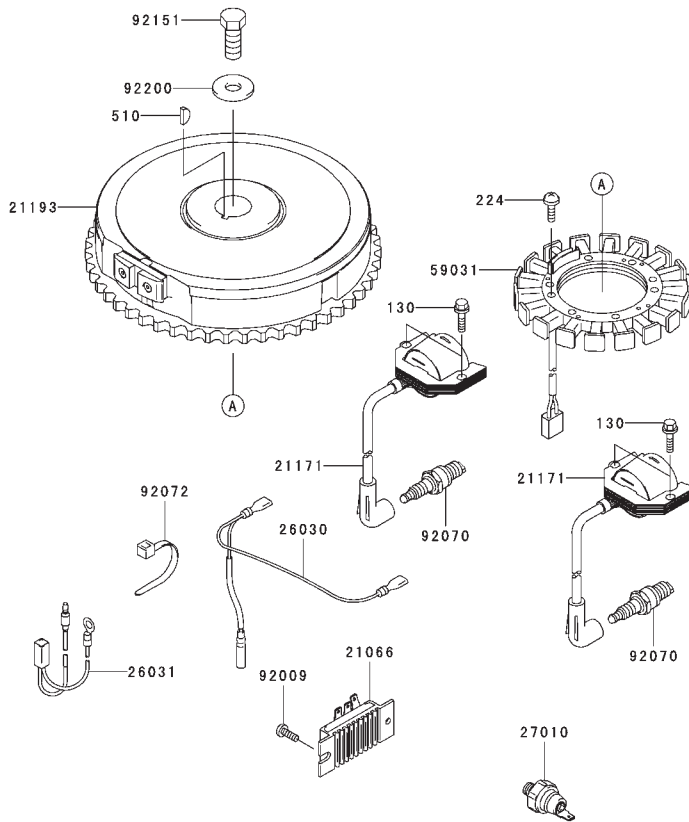
Ref. No.	Part No.	Qty.	Description



Cooling Equipment Assembly Kawasaki FH541V-AS04

Ref. No.	Part No.	Qty.	Description
13270	13270-7007	1	Plate
14037	14037-7010	1	Screen
23062	23062-7010	1	Bracket-Comp
49089	49089-7002	1	Shroud-Engine
49089A	49089-7032	1	Shroud-Engine
49089B	49089-7034	1	Shroud-Engine
59041	59041-7001	*	Fan
59041A	59041-7010	1	Fan
59066	59066-7011	1	Housing-Fan
92026	92026-7007	A/R	Spacer,6.2x7.9x5
92153	92153-7007	3	Bolt
92153A	92153-7008	1	Bolt
130	130B0612	7	Bolt-Flanged
130A	130B0616	2	Bolt-Flanged
130B	130B0625	2	Bolt-Flanged
130C	130B0816	1	Bolt-Flanged

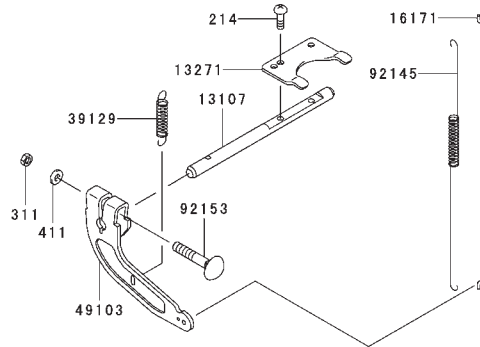
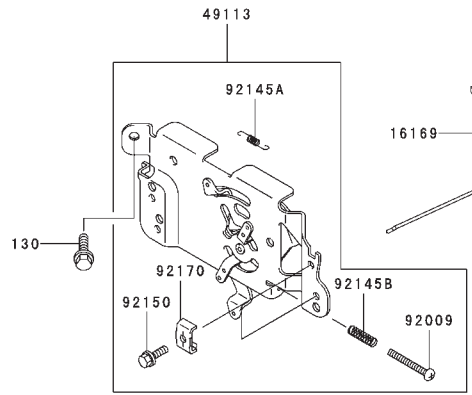
Ref. No.	Part No.	Qty.	Description



Electric Equipment Assembly Kawasaki FH541V-AS04

Ref. No.	Part No.	Qty.	Description
21171	21171-7013	2	Coil-Assy-Ignition
21066	21066-7011	1	Regulator-Voltage
21193	21193-7007	1	Flywheel-Assy
26030	26030-7001	1	Harness
26031	26031-7002	1	Harness
27010	27010-7002	1	Switch
59031	59031-7001	1	Coil-Charging
92009	92009-2308	1	Screw
92070	92070-7003	2	Plug-Spark,RCJ8Y, Solid
92072	92072-7003	2	Band
92151	92151-2097	1	Bolt,12x30
92200	92200-7002	1	Washer
130	130B0620	4	Bolt-Flanged
224	224B0520	4	Screw-Pan-WP-Cross
510	510A5100	1	Key-Woodruff

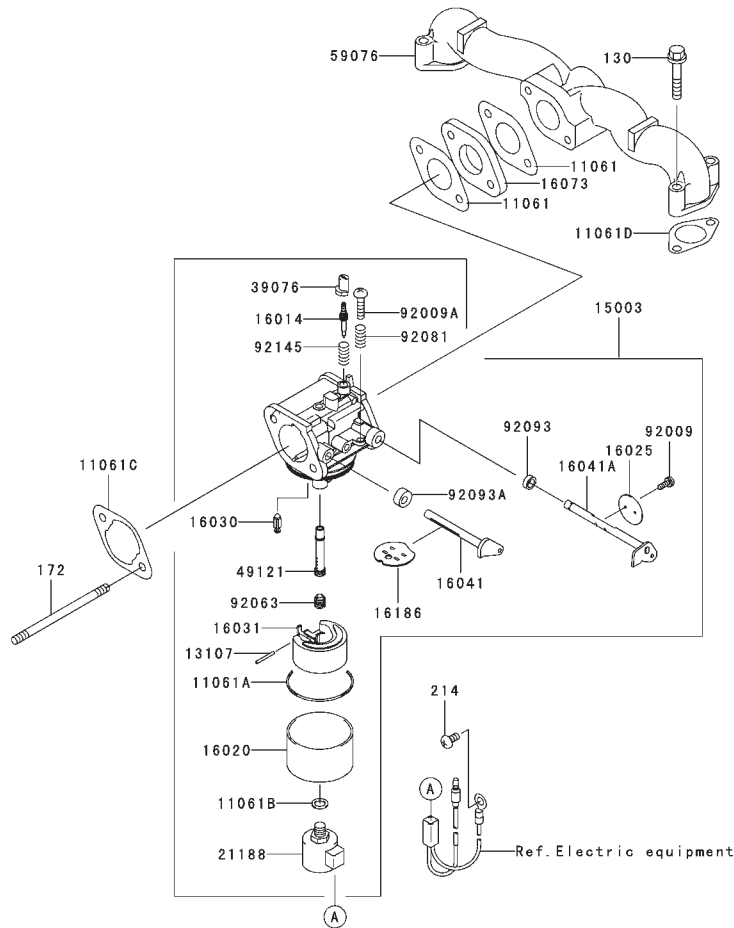
Ref. No.	Part No.	Qty.	Description



Control Equipment Assembly Kawasaki FH541V-AS04

Ref. No.	Part No.	Qty.	Description
113107	13107-7010	1	Shaft
13271	13271-7018	1	Plate
16169	16169-7010	1	Link-Choke
16171	16171-7001	1	Link
39129	39129-7003	1	Spring-Governor
49103	49103-7004	1	Arm-Governor
49113	49113-7011	1	Panel-Comp-Control
92009	92009-7007	1	Screw,4x35
92145	92145-7003	1	Spring
92145A	92145-7004	1	Spring
92145B	92145-7005	1	Spring
92150	92150-2182	2	Bolt,5x18
92153	92153-7005	1	Bolt,6x35
92170	92170-7001	2	Clamp
130	130B0612	2	Bolt-Flanged
214	214B0408	2	Screw-Pan+-
311	311B0600	1	Nut-Hex
411	411B0600	1	Washer-Plain

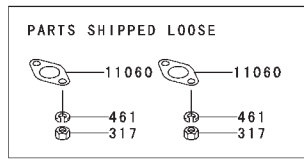
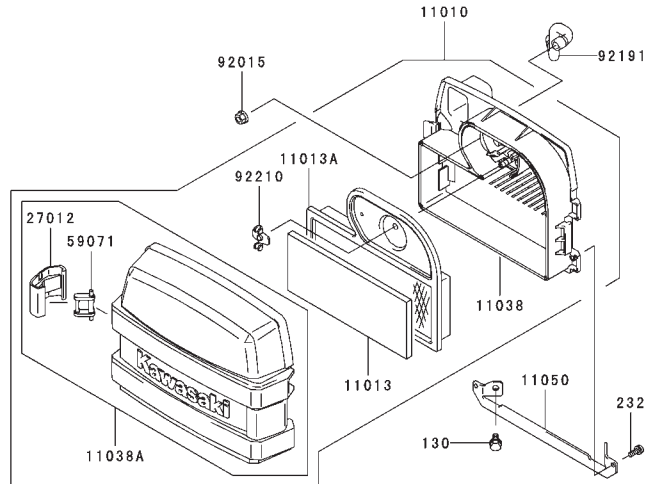
Ref. No.	Part No.	Qty.	Description



Carburetor Assembly Kawasaki FH541V-AS04

Ref. No.	Part No.	Qty.	Description
11061	11061-7004	2	Gasket, Insulator
11061A	11061-7009	1	Gasket, Chamber
11061B	11061-7010	1	Gasket
11061C	11061-7018	1	Gasket, Air Cleaner
11061D	11061-7019	2	Gasket
13107	13107-7018	1	Shaft
15003	15003-7086	1	Carburetor-Assy
16014	16014-7007	1	Screw-Pilot Air
16020	16020-7003	1	Chamber-Float
16025	16025-7006	1	Valve-Throttle
16030	16030-7003	1	Valve-Float
16031	16031-7002	1	Float
16041	16041-7016	1	Shaft-Carburetor, Choke
16041A	16041-7018	1	Shaft-Carburetor, Throttle
16073	16073-7007	1	Insulator
16186	16186-7004	1	Valve-Assy-Choke
21188	21188-7002	1	Solenoid
39076	39076-7001	1	Limiter
49121	49121-7007	1	Nozzle-Main
59076	59076-7001	1	Manifold-Intake
92009	92009-2083	2	Screw
92009A	92009-2349	1	Screw

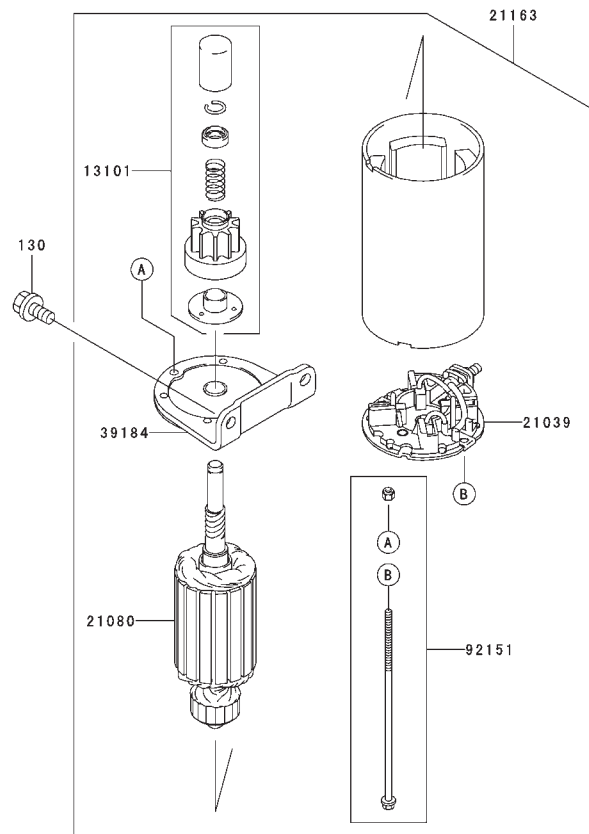
Ref. No.	Part No.	Qty.	Description
92063	92063-7046	1	Jet-Main, #100
92081	92081-2234	1	Spring
92093	92093-2100	1	Seal
92093A	92093-7003	1	Seal
92145	92145-7015	1	Spring
130	130B0635	4	Bolt-Flanged
172	172G0685	2	Bolt-Stud
214	214B0510	1	Screw-Pan +- Ref. Electric equipment



Air Filter/Muffler Assembly Kawasaki FH541V-AS04

Ref. No.	Part No.	Qty.	Description
11010	11010-7012	1	Filter-Assy-Air
11013	11013-7001	1	Element-Air Filter
11013A	11013-7002	1	Element-Air Filter
11038	11038-7006	1	Case-Assy-Air Filter
11038A	11038-7009	1	Case-Assy-Air Filter
11050	11050-7006	1	Bracket
11060	11060-7021	2	Gasket,Muffler
27012	27012-7001	2	Hook,Air Filter
59071	59071-7001	2	Joint
92015	92015-1193	2	Nut
92191	92191-7001	1	Tube
92210	92210-7004	1	Nut
130	130B0612	2	Bolt-Flanged
232	232B0514	2	Screw-Pan-WS+
317	317R0800	4	Nut-Hex-Small
461	461F0800	4	Washer-Spring

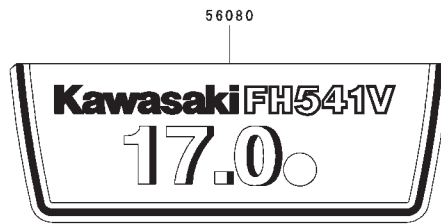
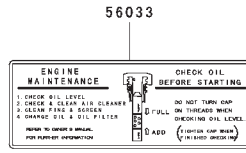
Ref. No.	Part No.	Qty.	Description



Starter Assembly Kawasaki FH541V-AS04

Ref. No.	Part No.	Qty.	Description
13101	13101-7001	1	Gear-Assy
21039	21039-7001	1	Brush
21080	21080-7001	1	Armature
21163	21163-7001	1	Starter-Electric
39184	39184-7001	1	Bracket-Assy
92151	92151-7013	1	Bolt
130	130B0816	3	Bolt-Flanged

Ref. No.	Part No.	Qty.	Description



Label Assembly Kawasaki FH541V-AS04

Ref. No.	Part No.	Qty.	Description
56033	56033-7002	1	Label-Manual
56070	56070-7001	1	Label-Warning
56080	56080-7021	1	Label-Brand

Ref. No.	Part No.	Qty.	Description

