



Replacement Exhaust Pipe Kit for Dingo® 222 Compact Utility Loader (Model 22300)

Part No. 105-8400

Form No. 3329-935

Installation Instructions

Loose Parts

Description	Qty.	Use
Exhaust pipe, upper	1	Install the exhaust pipe
Exhaust pipe, lower	1	
Pipe clamps	2	
Bracket	1	
Bracket extension	1	
Carriage bolt	1	
Small lock washer	1	
Large lock washer	1	
Nut	1	
Bolt	1	
Washer	1	

Removing the Existing Exhaust Pipe

1. Raise the loader arms and install the cylinder locks, stop the engine, remove the key and allow the engine to cool completely.



Warning



If the engine has been running, the muffler will be very hot and can seriously burn you if you touch it.

Allow the engine and muffler to cool completely before completing this procedure.

2. Remove and discard the bolt and washers securing the existing exhaust pipe to the front of the engine.
3. Loosen the clamp securing the exhaust pipe to the muffler.
4. Remove and discard the exhaust pipe and clamp.

Installing the Exhaust Pipe

1. If the clamps are not already on the exhaust pipes, install them loosely over the pipes as shown in Figure 1.
2. Remove the upper nut from the clamp on the lower pipe (Fig. 1).

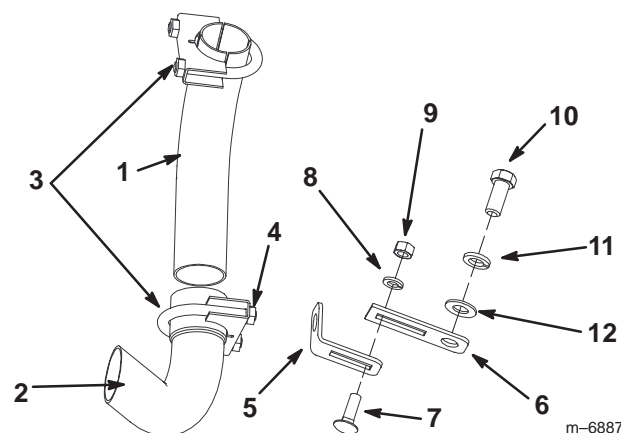


Figure 1

- | | |
|------------------------------|-----------------------|
| 1. Upper exhaust pipe | 7. Carriage bolt |
| 2. Lower exhaust pipe | 8. Small lock washer |
| 3. Pipe clamps | 9. Nut |
| 4. Install the bracket here. | 10. Bolt |
| 5. Bracket | 11. Large lock washer |
| 6. Bracket extension | 12. Washer |

3. Install the bracket over the end of the clamp U-bolt and secure it with the nut removed previously (Fig. 1).
4. Loosely install the bracket extension to the bracket using a carriage bolt, small lock washer, and nut (Fig. 1).

5. Loosely install the upper pipe into the lower pipe (Fig. 1).
6. Loosely install the upper pipe onto the muffler.
7. Loosely secure the bracket extension to the threaded hole in the front of the engine using a bolt, large lock washer, and washer (Fig. 1).
8. Ensure that the exhaust pipe end is positioned in the opening in the side of the frame.
9. Tighten the nuts on the 2 pipe clamps and other fasteners to secure the pipe and brackets into place (Fig. 1).