



Boom Kit Multi-Pro® 1200, 1250 and 5600 Turf Sprayers

Model No. 41027 - 230000601 and up.

Parts Catalog

Ordering Replacement Parts

To order replacement parts, please supply: the part number, the quantity, and the description of each part desired.

Understanding Reference Numbers

Each identified part in an illustration has a reference number. The reference number for a part also appears in the parts list, along with other information about the part.

This catalog uses two special reference number formats, one to indicate parts in a service assembly and another to indicate the quantity of a given part in an illustration.

Service Assembly Reference Numbers

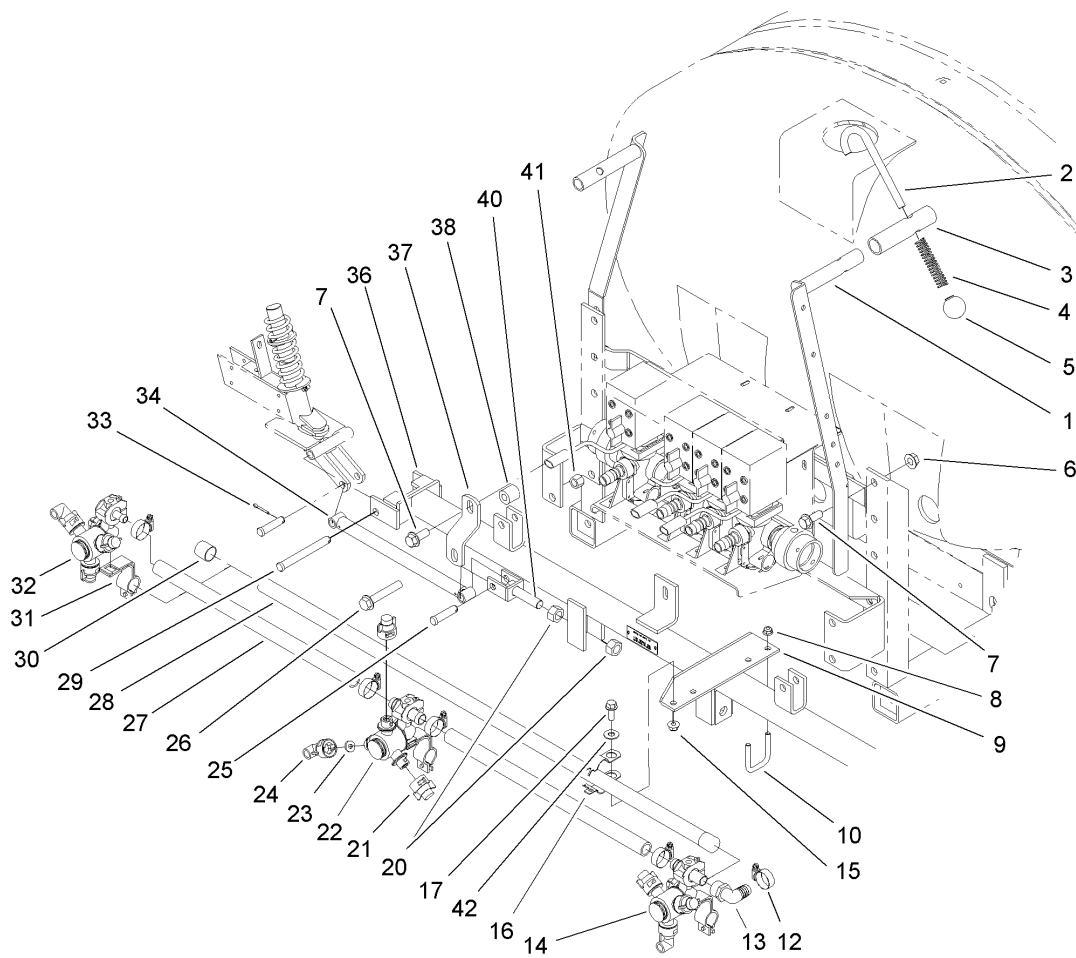
Parts in service assemblies have reference numbers in the form **a:b**. The **a** represents the reference number of the entire service assembly and the **b** represents a sequential number unique to each part within the service assembly.

For example, a wheel assembly might be identified by reference number 6, the tire by **6:1**, the valve by **6:2**, and the wheel by **6:3**. When you order the assembly identified by reference number 6, you receive all parts identified by reference numbers 6:1, 6:2, and 6:3. However, you may also order any part individually. Reference numbers of this type appear in illustrations and in part lists.

Reference Numbers Indicating Quantity

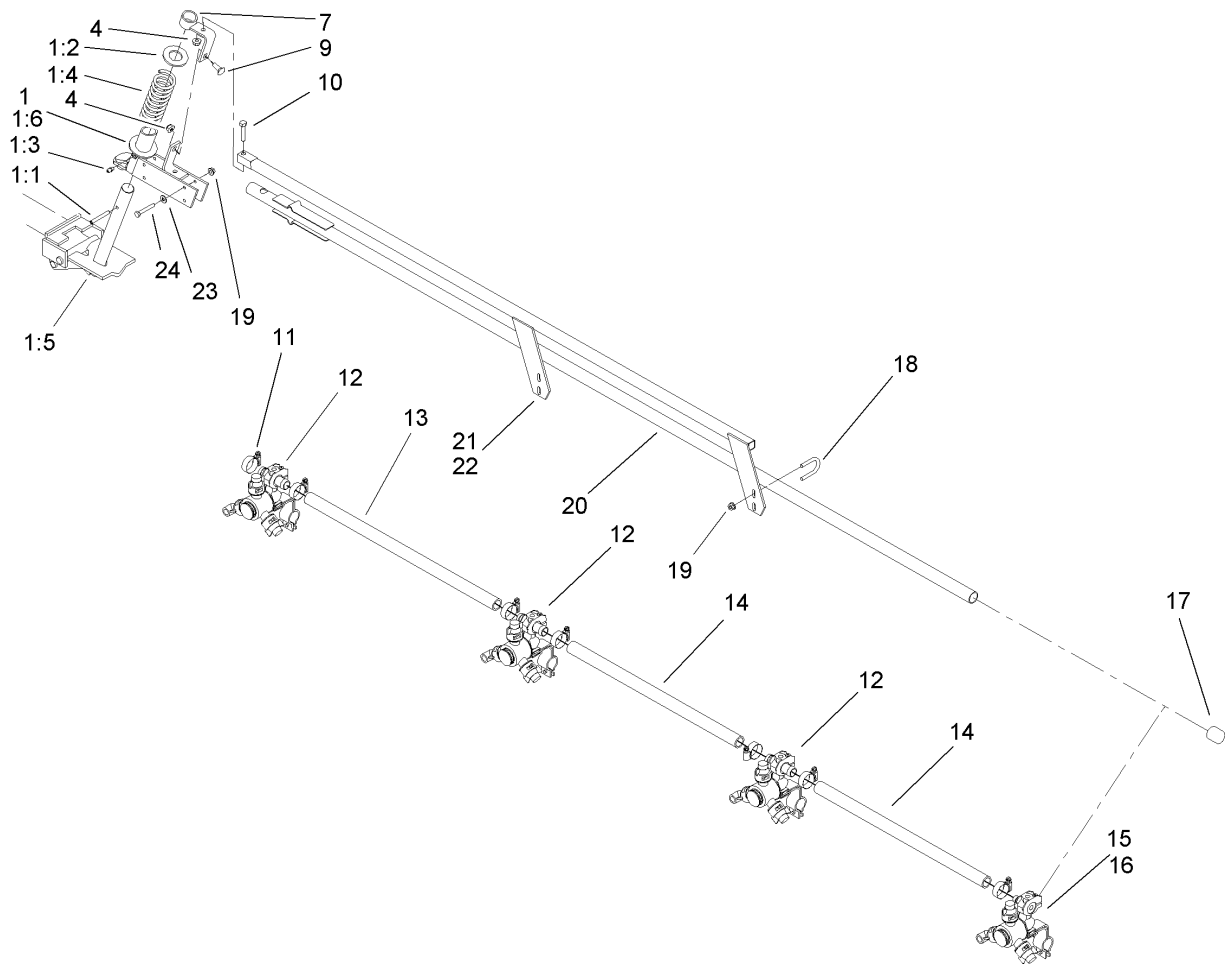
In an illustration, if a reference number indicates more than one part, the reference number has the form **nX y**. The **n** represents the quantity of the part, the **X** is the multiplication symbol, and the **y** represents the reference number.

For example, in an illustration, the reference number **2X 37** means that two of the parts identified by reference number 37 are indicated.



Main Frame Tube Assembly

Ref	Part No.	Qty.	Description	Ref	Part No.	Qty.	Description
1	106-5082-03	2	Hold-Boom	30	92-8420	2	Cap-Boom
2	92-8562	2	Hook-Boom Restraint	31	95-9185	11	Clamp
3	92-8561	2	Hose-Hold In	32	104-8787	1	Body-Turret, Single (Lh)
4	92-8563	2	Spring	33	3272-11	6	Pin-Cotter
5	92-8564	2	Knob	34	42240-03	2	Strut ASM
6	32128-23	4	Nut-HF	36	42227-03	1	Main Frame Tube ASM
7	3234-32	6	Screw-HHF	37	104-8761-03	2	Strap-Support, Boom
8	104-8300	4	Nut-Flange, NI	38	42257	2	Spacer-Tubular, 1"
9	106-5085-03	2	Plate-Center Boom	40	42237	2	Adjustable Clevis ASM
10	301950	2	U-Bolt-Square	41	3296-23	4	Nut-Lock, NI
12	2412-129	5	Clamp-Hose	42	3256-4	2	Washer-Flat
13	95-9314	1	Elbow				
14	104-8790	1	Body-Turret, Double (W/thread)				
15	104-8301	2	Nut-Flange, NI				
16	40494	2	Clamp ASM				
17	3234-11	2	Screw-HHF				
20	3217-11	4	Nut-Hex				
21	95-9187	22	Cap-Blank				
22	104-8789	1	Body-Turret, Double				
23	40998	11	Seat-Gasket				
24	95-9186	11	Cap				
25	42195	4	Pin-Clevis				
26	3234-40	2	Screw-HF				
27	40506	2	Hose-Jumper				
28	40493-03	1	Pipe-Boom, Center				
29	283-83	2	Pin-Clevis				



Boom Assembly

Ref	Part No.	Qty.	Description				
1	42840	2	Breakaway ASM				
1:1	32121-78	1	Pin-Roll				
1:2	3256-62	1	Washer-Flat				
1:3	302-5	1	Fitting-Grease				
1:4	42196-03	1	Spring				
1:5	42243-03	1	Hinge ASM				
1:6	42706-03	1	Breakaway Pivot ASM				
4	104-8300	4	Nut-Flange, NI				
7	42707-03	2	Support Bracket ASM				
9	3230-16	2	Screw-CARR				
10	322-7	2	Screw-HH				
11	2412-129	14	Clamp-Hose				
12	104-8789	6	Body-Turret, Double				
13	95-2229	2	Hose				
14	40506	4	Hose-Jumper				
15	104-8788	1	Body-Turret, Single (Rh)				
16	104-8787	1	Body-Turret, Single (Lh)				
17	92-8420	2	Cap-Boom				
18	92-0010	4	U-Bolt				
19	32128-32	16	Nut-HHF				
20	106-5076-03	2	Boom Extension ASM				
21	42710-03	1	RH Boom Support ASM				
22	42711-03	1	LH Boom Support ASM				
23	3256-22	8	Washer-Flat				
24	321-10	8	Screw-HH				

