



Electric Bed Lift Kit

2014 and After Workman® MD/MDX/MDX-D Utility Vehicle

Model No. 07389—Serial No. 315000001 and Up

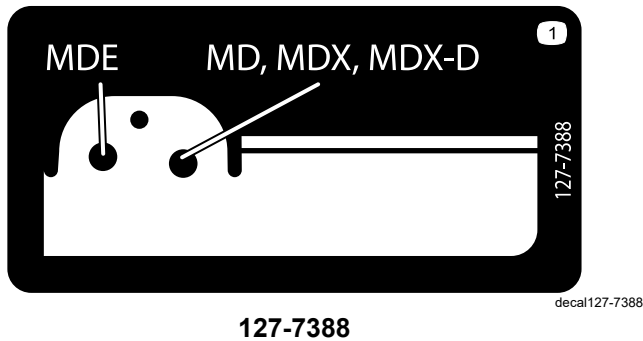
Installation Instructions

Safety

Safety and Instructional Decals



Safety decals and instructions are easily visible to the operator and are located near any area of potential danger. Replace any decal that is damaged or missing.



1. Pin location



Installation

Loose Parts

Use the chart below to verify that all parts have been shipped.

Procedure	Description	Qty.	Use
1	No parts required	–	Prepare the machine.
2	Outboard-lift bracket (short flanges) Inboard-lift bracket (long flanges) Hex-head bolt (5/16 x 5-1/2 inches) Flange nut (5/16 inch)	1 1 1 1	Install the bed bracket.
3	Switch Fuse (15 A)—machine serial number 411599999 and before only	1 1	Install the switch.
4	Lift actuator Clevis pin (3-1/2 inches) Clevis pin (2-1/4 inches) Hairpin Hex-head bolt (1/2 x 5-1/2 inches) Locknut (1/2 inch)	1 1 1 2 1 1	Install the lift actuator.
5	No parts required	–	Remove the prop rod.

Note: Determine the left and right sides of the machine from the normal operating position.

1

Preparing the Machine

No Parts Required

Procedure

1. Park the machine on a level surface.
2. Engage the parking brake.
3. Shut off the engine and remove the key.
4. Lift the lever on either side of the cargo bed and lift the bed up (Figure 1).

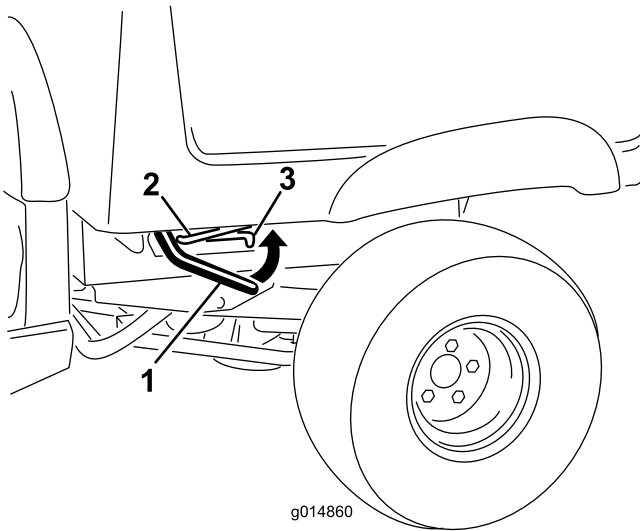


Figure 1

1. Lever
2. Prop rod
3. Detent slot

5. Pull the prop rod into the detent slot to secure the bed (Figure 2).

⚠ WARNING

A raised bed could fall and injure persons that are working beneath it.

- Always use the prop rod to hold the bed up before working under the bed.
- Remove any load material from the bed before raising it.

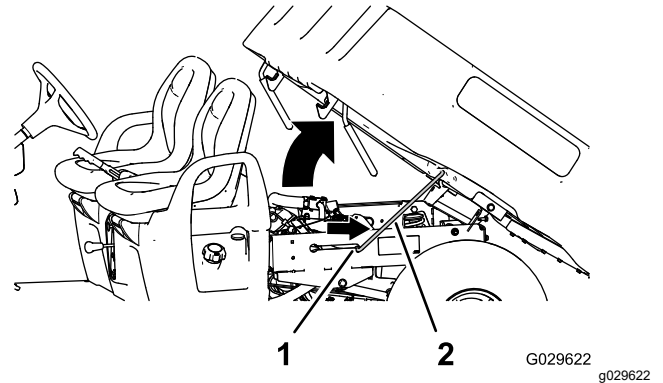


Figure 2

1. Detent slot
2. Prop rod

6. Remove the 4 flange nuts securing the latch-rod brackets to the underside of the bed (Figure 3).

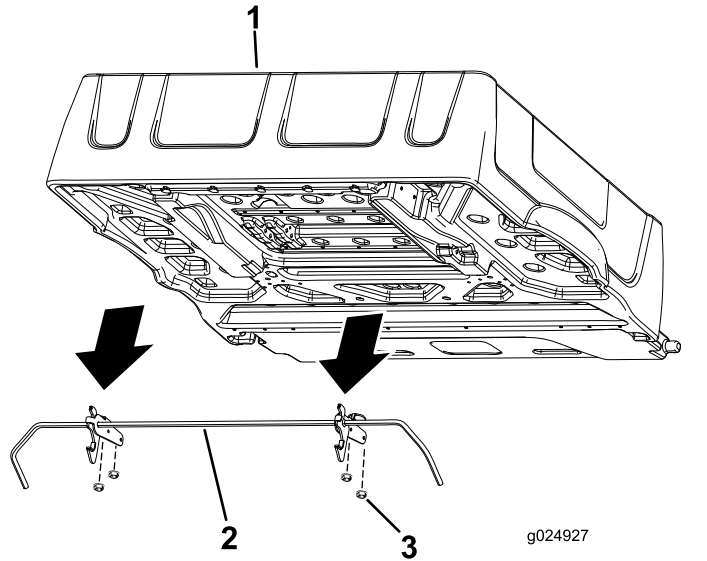


Figure 3

1. Bed
2. Latch rod
3. Flange nut

7. Remove and retain the latch rod and latches.

2

Installing the Bed-Lift Brackets

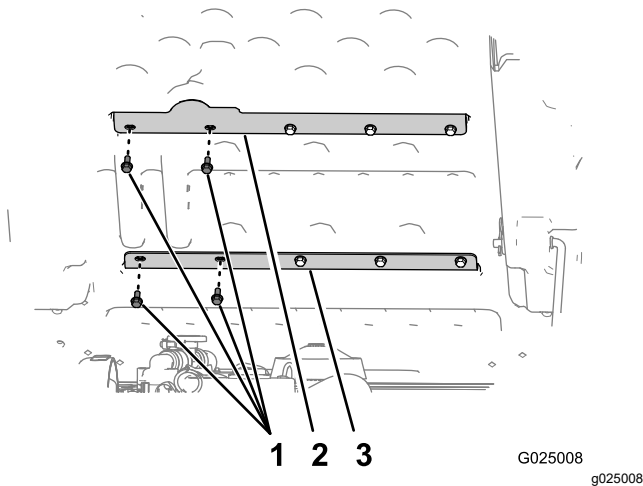
Parts needed for this procedure:

1	Outboard-lift bracket (short flanges)
1	Inboard-lift bracket (long flanges)
1	Hex-head bolt (5/16 x 5-1/2 inches)
1	Flange nut (5/16 inch)

Procedure

Perform the bed bracket installation at the bottom side of the bed.

1. Remove the 2 left-most bolts (5/16 x 3/4 inch) that secure upper-bed brace to the bed (Figure 4).

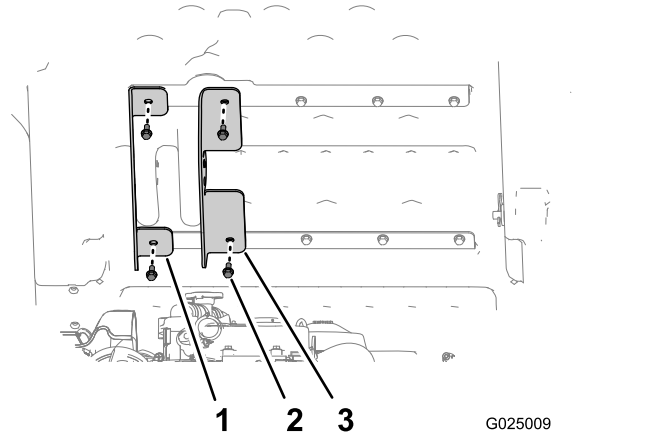


1. Bolts (5/16 x 3/4 inch)
2. Upper-bed brace
3. Lower-bed brace

2. Remove the 2 left-most bolts (5/16 x 3/4 inch) that secure lower-bed brace to the bed (Figure 4).

Note: Retain the 4 bolts for installation.

3. Align the left outboard-lift bracket (the bracket with the short flanges) to the outboard holes in the upper- and lower-bed braces (Figure 5).



1. Outboard-lift bracket (short flanges)
2. Bolts (5/16 x 3/4 inch)
3. Inboard-lift bracket (long flanges)

4. Secure the outboard lift bracket to the bed using the 2 bolts that you removed in step 1, and hand-tighten the bolts (Figure 5).
5. Align the inboard-lift bracket (the bracket with the long flanges) to the inboard holes in the upper- and lower-bed braces (Figure 5).
6. Secure the inboard-lift bracket to the bed with the 2 bolts that you removed in step 2, and hand-tighten the bolts (Figure 5).

7. Insert the hex-head bolt (5/16 x 5-1/2 inches) through hole 8 mm (5/16 inch) in the inboard-lift bracket (long flanges), bed structure, and the outboard bed-lift bracket (short flanges) as shown in [Figure 6](#).

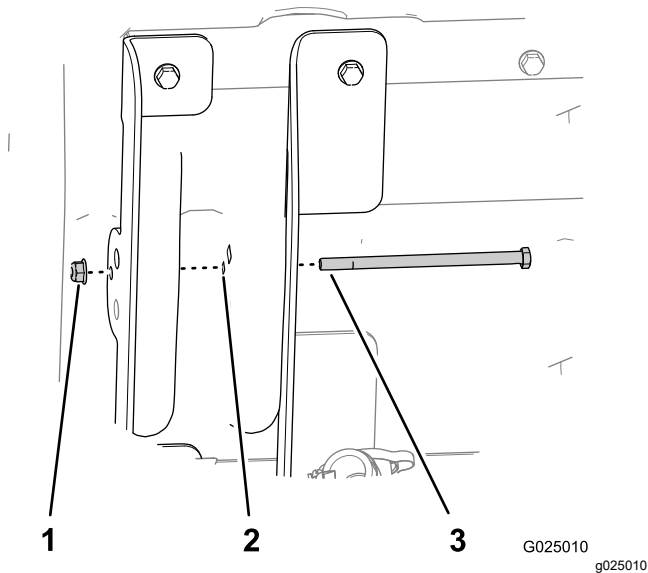


Figure 6

1. Locknuts (5/16 inch)
 2. Hole 8 mm (5/16 inch)
 3. Hex-head bolt (5/16 x 5-1/2 inches)
-
8. Secure the bolt with the flange nut (5/16 inch) hand-tight ([Figure 6](#)).

3

Installing the Switch

Parts needed for this procedure:

1	Switch
1	Fuse (15 A)—machine serial number 411599999 and before only

Machine Serial Number 411599999 and Before

1. Disconnect the negative-battery terminal from the battery.
2. Remove the plug from the dash panel, to the right of the steering column and above the key switch ([Figure 7](#)).

Note: If the hole in the dash is in use, measure over 13 mm (1/2 inch) and cut another 21 x 35 mm (27/32 x 1-15/32 inches) rectangular opening in the dash. Ensure that you do not damage any existing components behind the dash when cutting the hole.

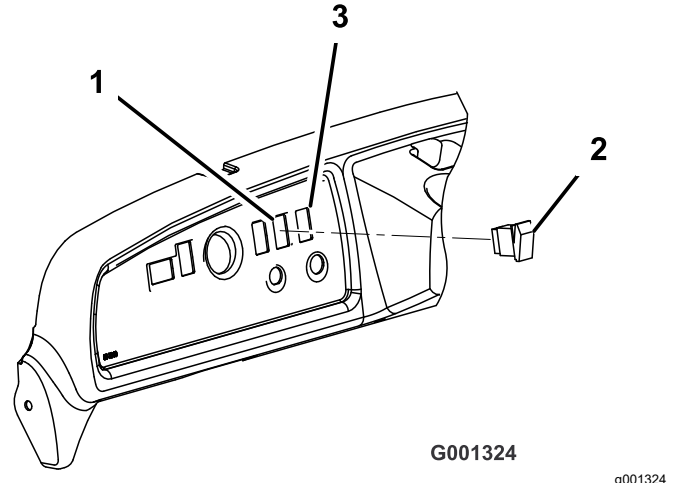


Figure 7

1. Plugged hole
2. Bed-lift switch
3. Cut the new hole (if required).

-
3. Plug the bed-lift switch into the harness connector in the dash.

Note: Do not install the switch.

4. Trim the fuse tabs so they sit flush with the fuse block.

5. Install the new fuse (15 A) into the open slot in the fuse block.

Machine Serial Number 411600000 and After

1. Cut out the opening in the dashboard decal for the switch (box A of [Figure 8](#)).
2. Install the switch connector through the opening in the dashboard (box B of [Figure 8](#)).
3. Install the switch to the switch connector (box C of [Figure 8](#)).
4. Ensure that the switch is oriented properly (box D of [Figure 8](#)).

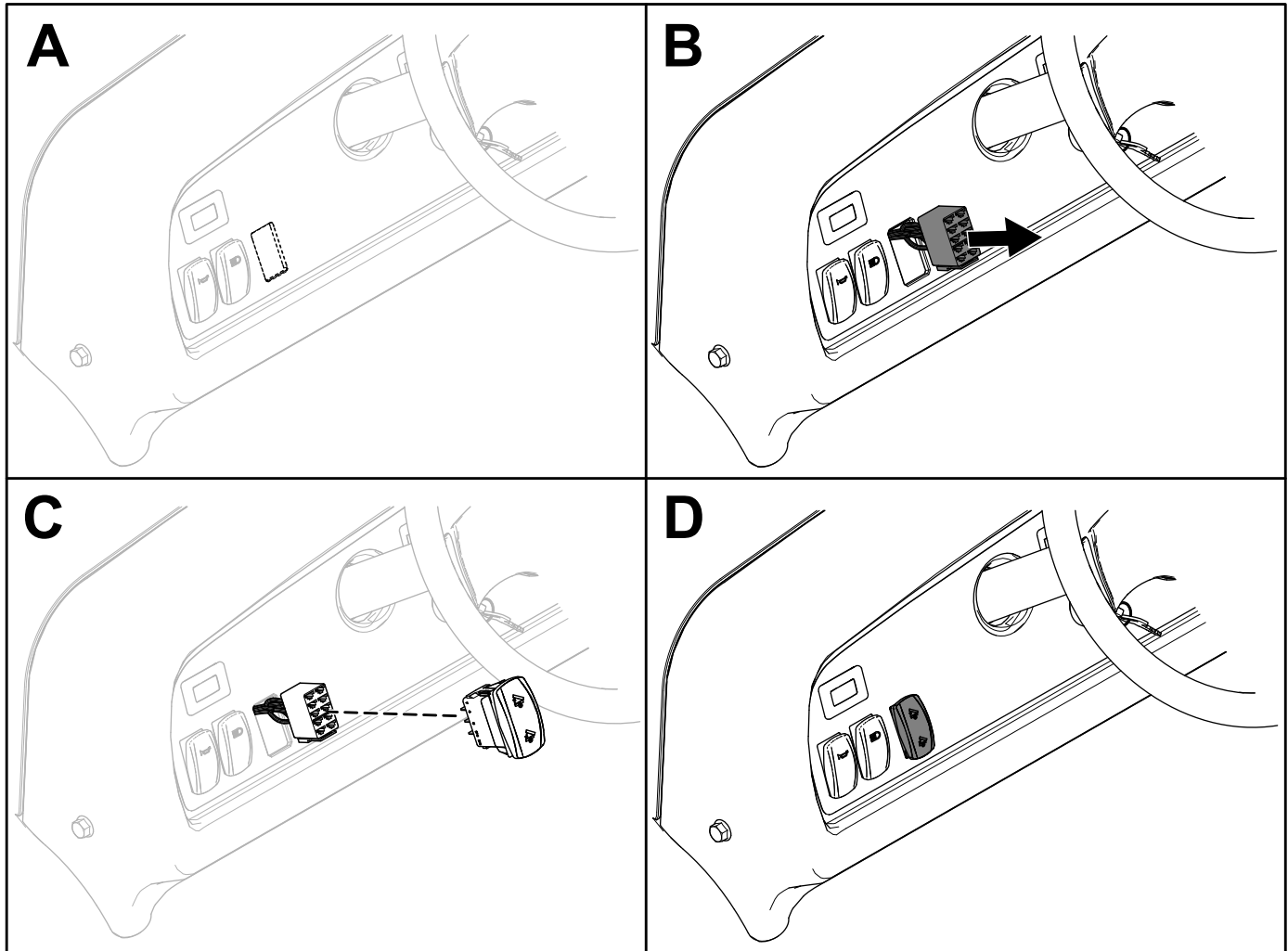


Figure 8

g382366

4

Installing the Lift Actuator

Parts needed for this procedure:

1	Lift actuator
1	Clevis pin (3-1/2 inches)
1	Clevis pin (2-1/4 inches)
2	Hairpin
1	Hex-head bolt (1/2 x 5-1/2 inches)
1	Locknut (1/2 inch)

Procedure

1. Align the hole in the lower-mount point for the lift actuator with the holes in the chassis-mount brackets (Figure 9).
2. Secure the lift actuator to the chassis-mount brackets with the clevis pin (2-1/4 inches) and hairpin (Figure 9).

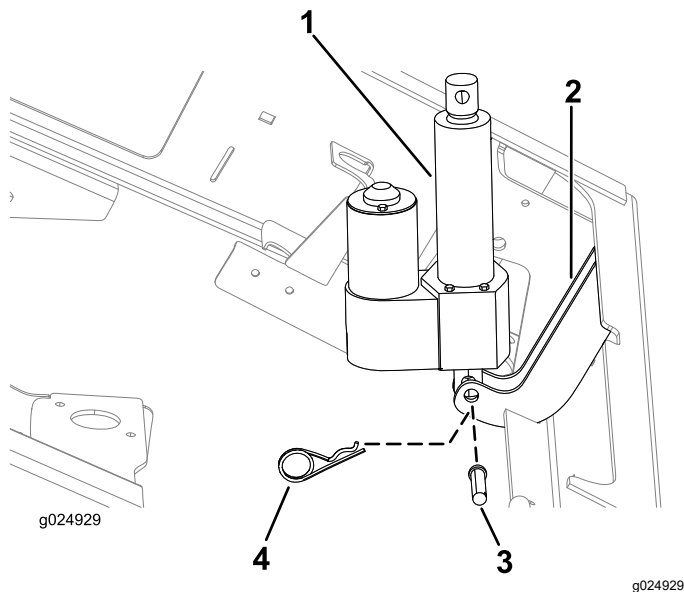


Figure 9

1. Lift actuator
2. Chassis-mount brackets
3. Clevis pin (2-1/4 inches)
4. Hairpin

3. Connect the 2-socket electrical connector of the rear wire harness of the machine to the 2-pin connector of the lift actuator (Figure 10).

Note: The 2-socket electrical connector of the rear wire harness is located adjacent to the electrical-control cover.

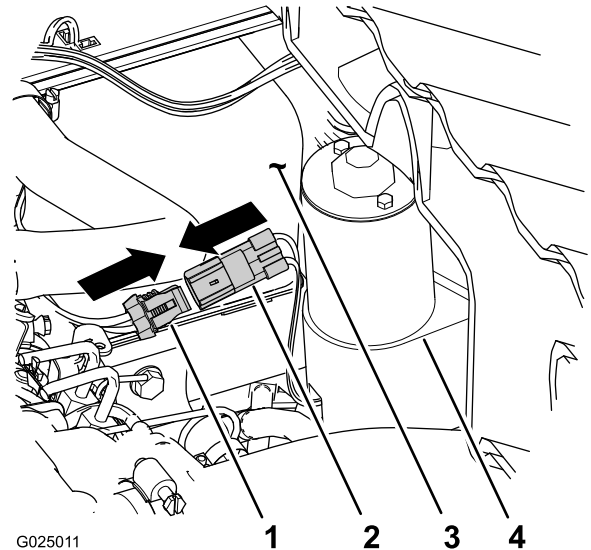


Figure 10

1. 2-socket electrical connector (rear wire harness)
2. 2-pin connector (lift actuator)
3. Electrical-control cover
4. Lift actuator

4. Connect the negative-battery terminal to the battery.
5. Press the up-paddle of the bed-lift switch to extend the actuator (Figure 7).

Note: If the lift actuator does not extend, press the other paddle of the switch.

6. Align the up-paddle to the 12 o'clock position and insert the bed-lift switch into the opening in the dash (Figure 7).

Note: The switch should snap and lock into position.

7. Press the up paddle the bed-lift switch to extend the rod of the lift actuator rod until the hole in the rod is aligns with the holes in the inboard and outboard-lift brackets (Figure 11).

Note: Select the set of holes in the bracket for the gasoline and diesel machines; refer to [Safety and Instructional Decals \(page 1\)](#) for the hole locations for this machine.

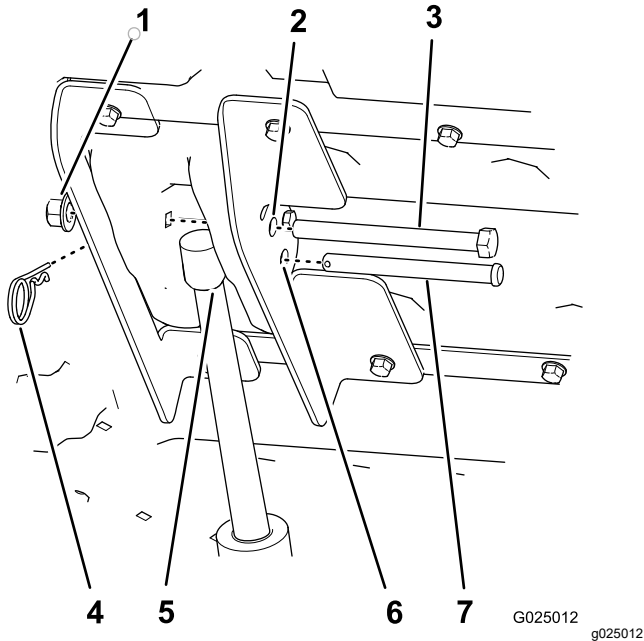


Figure 11

- | | |
|--|---|
| 1. Locknut (1/2 inch) | 5. Lift-actuator rod |
| 2. 12.7 mm (1/2 inch) hole for the hex-head bolt | 6. 12.7 mm (1/2 inch) hole for the clevis pin |
| 3. Hex-head bolt (1/2 x 5-1/2 inches) | 7. Clevis pin (3-1/2 inches) |
| 4. Hairpin | |

5

Removing the Prop Rod

No Parts Required

Procedure

1. Remove the hairpin and washer that secure the prop rod to the bottom of the bed (Figure 12).

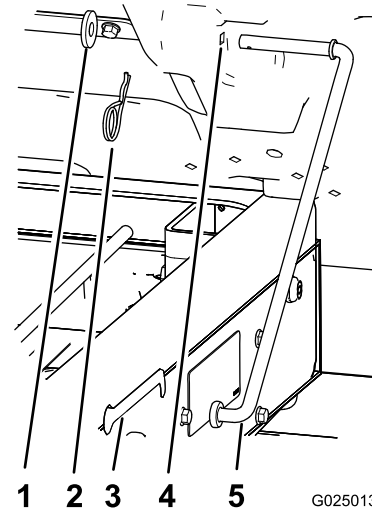


Figure 12

- | | |
|-----------------|-------------|
| 1. Washer | 4. Bed hole |
| 2. Hairpin | 5. Prop rod |
| 3. Slot (frame) | |

2. Slide the prop rod forward to remove it from the bracket on the frame (Figure 12).

Note: Retain the prop rod components for future use.

Note: If the electric box lift is ever removed, install the prop rod and latch rod again, using the existing fasteners and the prop-rod bracket.

8. Secure the lift-actuator rod to the lift brackets with the clevis pin (3-1/2 inches) and hairpin (Figure 11).
- Note:** Tighten the locknut and flange nut until they are snug.
9. Tighten the 4 bolts (5/16 x 3/4 inch) that secure the inboard and outboard-lift brackets to the bed (Figure 5) to 15 to 16.6 N-m (133 to 147 in-lb).
10. Align the hex-head bolt (1/2 x 5-1/2 inches) through the remaining 12.7 mm (1/2 inch) holes in the inboard and outboard-lift brackets (Figure 11) and secure it with a locknut (1/2 inch) until the nut is snug.
11. Tighten the flange nut that secures the bolt (5/16 inch) until it is snug (Figure 6).

Operation

⚠ WARNING

Driving the machine with the cargo bed raised could cause the machine to tip or roll easier. You could damage the structure of the cargo bed if you operate the machine with the bed raised.

- Operate the machine when the cargo bed is down.
- After emptying the cargo bed, lower it.

⚠ WARNING

The weight of the bed may be heavy. Hands or other body parts could be crushed.

Keep your hands and other body parts clear when lowering the bed.

Important: When you hear a ratcheting sound, the bed lift is completely extended or retracted. Do not continue pressing the switch.

Raising the Bed

1. Turn the key switch to the ON position.
2. Push the top of the switch to raise the bed.

Lowering the Bed

Push the bottom of the switch to lower the bed.

Note: The actuator may cause slight deformation to the bed after it is fully lowered and before the actuator clutch engages. Release the switch when you hear a ratcheting noise.

Maintenance

Servicing the Air Cleaner For Workman MDX-D Machines

1. Support the bed with lifting equipment.
2. Remove the hairpin cotter and clevis pin securing the actuator rod to the inboard and outboard-lift brackets ([Figure 11](#)).
3. Tip the bed all the way up.
4. Rotate the actuator forward.
5. Remove the air cleaner and service it as required; refer to the machine *Operator's Manual*.
6. Install the air cleaner; refer to the machine *Operator's Manual*.
7. Lower the bed and align the lift actuator to the lift brackets ([Figure 11](#)).
8. Secure the lift actuator to the lift brackets with the clevis pin and hairpin ([Figure 11](#)).

Notes:

Notes:

Notes:

Declaration of Incorporation

Model No.	Serial No.	Product Description	Invoice Description	General Description	Directive
07389	315000001 and Up	Cab Kit, Workman MD/MDX/MDX-D Utility Vehicle	ELECTRIC CARGO BED LIFT KIT (2014+)	Utility Vehicle	2006/42/EC, 2000/14/EC

Relevant technical documentation has been compiled as required per Part B of Annex VII of 2006/42/EC.

We will undertake to transmit, in response to requests by national authorities, relevant information on this partly completed machinery. The method of transmission shall be electronic transmittal.

This machinery shall not be put into service until incorporated into approved Toro models as indicated on the associated Declaration of Conformity and in accordance with all instructions, whereby it can be declared in conformity with all relevant Directives.

Certified:



Tom Langworthy
Engineering Director
8111 Lyndale Ave. South
Bloomington, MN 55420, USA
October 24, 2022

Authorized Representative:

Marcel Dutrieux
Manager European Product Integrity
Toro Europe NV
Nijverheidsstraat 5
2260 Oevel
Belgium

UK Declaration of Incorporation

Model No.	Serial No.	Product Description	Invoice Description	General Description	Regulation
07389	315000001 and Up	Cab Kit, Workman MD/MDX/MDX-D Utility Vehicle	ELECTRIC CARGO BED LIFT KIT (2014+)	Utility Vehicle	S.I. 2008 No. 1597, S.I. 2001 No. 1701

Relevant technical documentation has been compiled as required per Schedule 10 of S.I. 2008 No. 1597.

We will undertake to transmit, in response to requests by national authorities, relevant information on this partly completed machinery. The method of transmission shall be electronic transmittal.

This machinery shall not be put into service until incorporated into approved Toro models as indicated on the associated Declaration of Conformity and in accordance with all instructions, whereby it can be declared in conformity with all relevant Directives.

This declaration has been issued under the sole responsibility of the manufacturer.
The object of the declaration is in conformity with relevant UK legislation.



Tom Langworthy
Engineering Director
8111 Lyndale Ave. South
Bloomington, MN 55420, USA
October 24, 2022

Authorized Representative:

Marcel Dutrieux
Manager European Product Integrity
Toro U.K. Limited
Spellbrook Lane West
Bishop's Stortford
CM23 4BU
United Kingdom

EEA/UK Privacy Notice

Toro's Use of Your Personal Information

The Toro Company ("Toro") respects your privacy. When you purchase our products, we may collect certain personal information about you, either directly from you or through your local Toro company or dealer. Toro uses this information to fulfil contractual obligations - such as to register your warranty, process your warranty claim or to contact you in the event of a product recall - and for legitimate business purposes - such as to gauge customer satisfaction, improve our products or provide you with product information which may be of interest. Toro may share your information with our subsidiaries, affiliates, dealers or other business partners in connection these activities. We may also disclose personal information when required by law or in connection with the sale, purchase or merger of a business. We will never sell your personal information to any other company for marketing purposes.

Retention of your Personal Information

Toro will keep your personal information as long as it is relevant for the above purposes and in accordance with legal requirements. For more information about applicable retention periods please contact legal@toro.com.

Toro's Commitment to Security

Your personal information may be processed in the US or another country which may have less strict data protection laws than your country of residence. Whenever we transfer your information outside of your country of residence, we will take legally required steps to ensure that appropriate safeguards are in place to protect your information and to make sure it is treated securely.

Access and Correction

You may have the right to correct or review your personal data, or object to or restrict the processing of your data. To do so, please contact us by email at legal@toro.com. If you have concerns about the way in which Toro has handled your information, we encourage you to raise this directly with us. Please note that European residents have the right to complain to your Data Protection Authority.



The Toro Warranty

Two-Year or 1,500 Hours Limited Warranty

Conditions and Products Covered

The Toro Company warrants your Toro Commercial product ("Product") to be free from defects in materials or workmanship for 2 years or 1,500 operational hours*, whichever occurs first. This warranty is applicable to all products with the exception of Aerators (refer to separate warranty statements for these products). Where a warrantable condition exists, we will repair the Product at no cost to you including diagnostics, labor, parts, and transportation. This warranty begins on the date the Product is delivered to the original retail purchaser.

* Product equipped with an hour meter.

Instructions for Obtaining Warranty Service

You are responsible for notifying the Commercial Products Distributor or Authorized Commercial Products Dealer from whom you purchased the Product as soon as you believe a warrantable condition exists. If you need help locating a Commercial Products Distributor or Authorized Dealer, or if you have questions regarding your warranty rights or responsibilities, you may contact us at:

Toro Commercial Products Service Department
8111 Lyndale Avenue South
Bloomington, MN 55420-1196

952-888-8801 or 800-952-2740
E-mail: commercial.warranty@toro.com

Owner Responsibilities

As the product owner, you are responsible for required maintenance and adjustments stated in your *Operator's Manual*. Repairs for product issues caused by failure to perform required maintenance and adjustments are not covered under this warranty.

Items and Conditions Not Covered

Not all product failures or malfunctions that occur during the warranty period are defects in materials or workmanship. This warranty does not cover the following:

- Product failures which result from the use of non-Toro replacement parts, or from installation and use of add-on, or modified non-Toro branded accessories and products.
- Product failures which result from failure to perform recommended maintenance and/or adjustments.
- Product failures which result from operating the Product in an abusive, negligent, or reckless manner.
- Parts consumed through use that are not defective. Examples of parts which are consumed, or used up, during normal Product operation include, but are not limited to, brake pads and linings, clutch linings, blades, reels, rollers and bearings (sealed or greasable), bed knives, spark plugs, castor wheels and bearings, tires, filters, belts, and certain sprayer components such as diaphragms, nozzles, flow meters, and check valves.
- Failures caused by outside influence, including, but not limited to, weather, storage practices, contamination, use of unapproved fuels, coolants, lubricants, additives, fertilizers, water, or chemicals.
- Failure or performance issues due to the use of fuels (e.g. gasoline, diesel, or biodiesel) that do not conform to their respective industry standards.
- Normal noise, vibration, wear and tear, and deterioration. Normal "wear and tear" includes, but is not limited to, damage to seats due to wear or abrasion, worn painted surfaces, scratched decals or windows.

Countries Other than the United States or Canada

Customers who have purchased Toro products exported from the United States or Canada should contact their Toro Distributor (Dealer) to obtain guarantee policies for your country, province, or state. If for any reason you are dissatisfied with your Distributor's service or have difficulty obtaining guarantee information, contact your Authorized Toro Service Center.

Parts

Parts scheduled for replacement as required maintenance are warranted for the period of time up to the scheduled replacement time for that part. Parts replaced under this warranty are covered for the duration of the original product warranty and become the property of Toro. Toro will make the final decision whether to repair any existing part or assembly or replace it. Toro may use remanufactured parts for warranty repairs.

Deep Cycle and Lithium-Ion Battery Warranty

Deep cycle and Lithium-Ion batteries have a specified total number of kilowatt-hours they can deliver during their lifetime. Operating, recharging, and maintenance techniques can extend or reduce total battery life. As the batteries in this product are consumed, the amount of useful work between charging intervals will slowly decrease until the battery is completely worn out. Replacement of worn out batteries, due to normal consumption, is the responsibility of the product owner. Note: (Lithium-Ion battery only): Refer to the battery warranty for additional information.

Lifetime Crankshaft Warranty (ProStripe 02657 Model Only)

The Prostripe which is fitted with a genuine Toro Friction Disc and Crank-Safe Blade Brake Clutch (integrated Blade Brake Clutch (BBC) + Friction Disc assembly) as original equipment and used by the original purchaser in accordance with recommended operating and maintenance procedures, are covered by a Lifetime Warranty against engine crankshaft bending. Machines fitted with friction washers, Blade Brake Clutch (BBC) units and other such devices are not covered by the Lifetime Crankshaft Warranty.

Maintenance is at Owner's Expense

Engine tune-up, lubrication, cleaning and polishing, replacement of filters, coolant, and completing recommended maintenance are some of the normal services Toro products require that are at the owner's expense.

General Conditions

Repair by an Authorized Toro Distributor or Dealer is your sole remedy under this warranty.

The Toro Company is not liable for indirect, incidental or consequential damages in connection with the use of the Toro Products covered by this warranty, including any cost or expense of providing substitute equipment or service during reasonable periods of malfunction or non-use pending completion of repairs under this warranty. Except for the Emissions warranty referenced below, if applicable, there is no other express warranty. All implied warranties of merchantability and fitness for use are limited to the duration of this express warranty.

Some states do not allow exclusions of incidental or consequential damages, or limitations on how long an implied warranty lasts, so the above exclusions and limitations may not apply to you. This warranty gives you specific legal rights, and you may also have other rights which vary from state to state.

Note Regarding Emissions Warranty

The Emissions Control System on your Product may be covered by a separate warranty meeting requirements established by the U.S. Environmental Protection Agency (EPA) and/or the California Air Resources Board (CARB). The hour limitations set forth above do not apply to the Emissions Control System Warranty. Refer to the Engine Emission Control Warranty Statement supplied with your product or contained in the engine manufacturer's documentation.