



32in Recycler[®] Kit

for Fixed Deck Mid-Size Mowers

Model No. 30118

Form No. 3350-108

Installation Instructions

Loose Parts

Note: Use the chart below to identify parts for assembly.

DESCRIPTION	QTY.	USE
Baffle	1	Install the Recycler [®] baffle
Bolt, 5/16 x 5/8 inch	1	
Flange nut, 5/16 inch	6	
Blocker plate	1	Install the blocker plate
Bolt, 3/8 x 1 inch	1	
Flange nut, 3/8 inch	1	
Bolt, 1/4 x 3/4 inch	2	
Flange nut, 1/4 inch	2	
Cover plate	1	Install the cover plate
Bolt, 3/8 x 3/4 inch	4	
Flange nut, 3/8 inch	4	
Kicker	2	Install the kickers
Bolt, 5/16 x 5/8 inch	4	
Flange nut, 5/16 inch	4	
Recycler [®] blade	2	Replace standard blades on mower

Preparing the Mower

1. Remove belt cover from top of mower.
2. Thoroughly clean underside of the mower. All debris must be removed to ensure that baffles and kickers will fit properly against the cutting chamber.
3. Tilt the mower up and support with jack stands to ease installation of kit.
4. Flip up discharge chute and remove the discharge baffle near discharge opening (Fig. 1).

Note: Replace hardware in top of mower when baffle is removed for safety and to save for use when using mower to side discharge.



Warning



Open holes in the mower exposes you and others to thrown debris. Debris thrown out of holes in the mower can cause injury.

- Never operate mower without hardware mounted in all holes in mower.
- Install hardware in mounting holes when mulching baffle is removed.

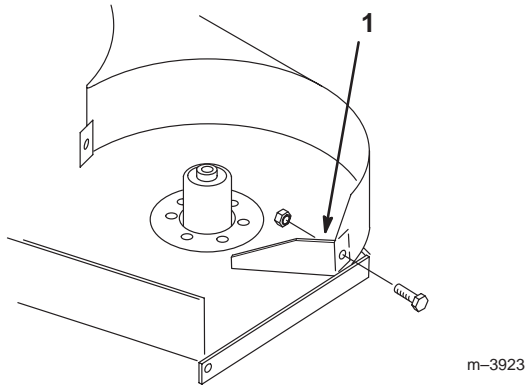


Figure 1

1. Discharge baffle

Installing the Front Baffle

1. Remove the 5 carriage bolts (5/16 x 5/8 inch) and locknuts (3/8 inch) from the holes where the baffles will be installed (Fig. 2).

Note: Save the previously removed hardware for use when using mower to side discharge.

2. Place the baffle inside cutting chamber with studs through the top.
3. Secure the studs to top of mower with 5 flange nuts (5/16 inch) and to the back baffle with a bolt (5/16 x 5/8 inch) and a flange nut (5/16 inch) (Fig. 2).

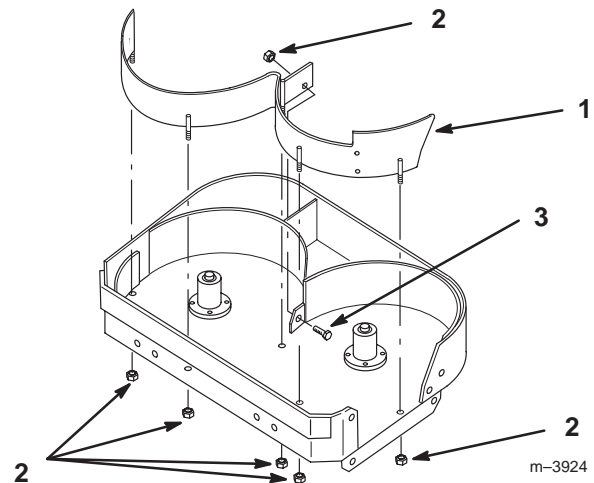


Figure 2

1. Baffle
2. Flange nut 5/16 inch
3. Bolt, 5/16 x 5/8 inch (16 mm)

Installing the Blocker Plate

1. Place the blocker plate inside cutting chamber between the front and baffle.
2. Remove the existing caster mounting hardware where the blocker plate is to be installed.
3. Secure the blocker plate to the front of mower with a bolt (3/8 x 1 inch) and a flange nut (3/8 inch) (Fig. 2).
4. Secure the blocker to the front baffle with 2 bolts (1/4 x 5/8 inch) and 2 flange nuts (1/4 inch) (Fig. 2).

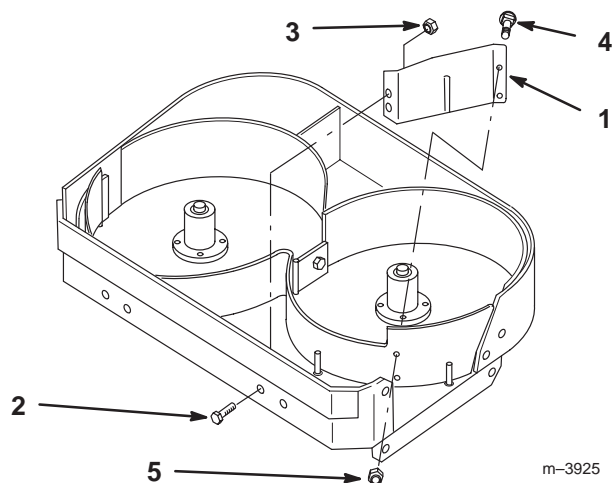


Figure 3

- | | |
|-------------------------|-------------------------|
| 1. Blocker plate | 4. Bolt, 1/4 x 5/8 inch |
| 2. Bolt, 3/8 x 5/8 inch | 5. Flange nut, 1/4 inch |
| 3. Flange nut, 3/8 inch | |

Installing the Cover Plate

1. Position the cover plate over the side discharge opening.
2. Secure the cover plate to the mower with 4 bolts (3/8 x 3/4 inch) and 4 flange nuts (3/8 inch) (Fig. 4).

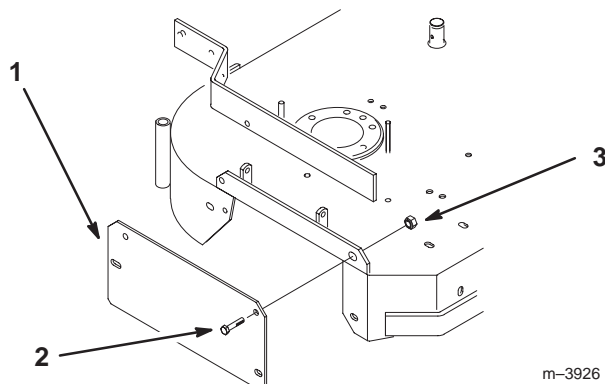


Figure 4

- | | |
|-----------------------------------|-------------------------|
| 1. Discharge cover plate | 3. Flange nut, 3/8 inch |
| 2. Bolt 3/8-16 x 3/4 inch (19 mm) | |

3. Tighten all mounting hardware securely.

Installing the Kickers

1. Measure from the spindle center lines, and locate kickers as shown (Fig. 5). Position one kicker 7/16 inch (11 mm) off to the right of the right spindle and one kicker 1-7/8 inch (48 mm) off to the left of the left spindle (Fig. 5).
2. Holding kickers tight against baffle, mark, center punch and drill 2 holes (11/32 inch) holes for each kicker (Fig. 5).

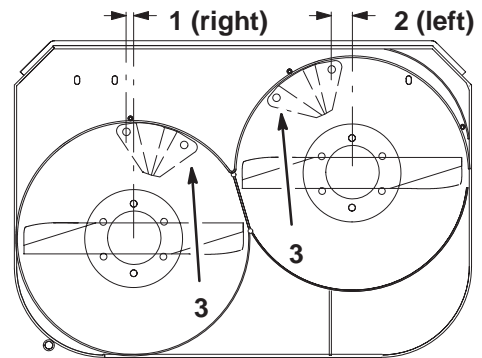


Figure 5

- | | |
|-----------------------|---|
| 1. 7/16 inch (11 mm) | 3. Mark, center punch and drill 11/32 inch (9 mm) holes |
| 2. 1-7/8 inch (48 mm) | |

3. Place the kickers inside the mower over drilled holes and install each kicker with 2 bolts (5/16 x 5/8 inch) through from the bottom of the mower, and 2 flange nuts (5/16 inch) (Fig. 6).

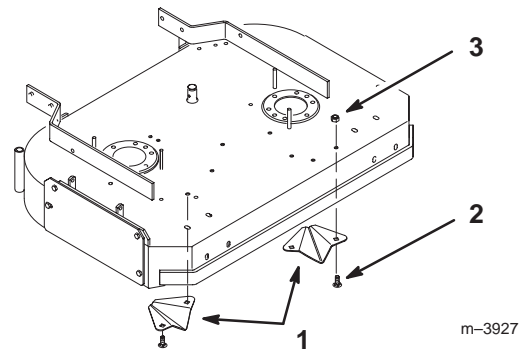


Figure 6

- | | |
|--------------------------|--------------------------|
| 1. Kicker | 3. Flange nut, 5/16 inch |
| 2. Bolt, 5/16 x 5/8 inch | |

4. Tighten all mounting hardware securely.

Installing the Recycler® Blades



Warning



A blade is sharp. Contact with sharp blade can cause serious personal injury.

- **Wear gloves or wrap sharp edges of the blade with a rag.**

1. Remove the standard blades (Fig. 7). Refer to Operator's Manual.
 2. Place the blade onto the bolt, over cone washer. Select proper number of spacer(s) for height-of-cut and slide bolt into spindle (Fig. 7).
- Important** The sail (curved part of the blade) must be pointing toward the inside of the mower to ensure proper cutting.
3. Install remaining spacer(s) for proper height-of-cut and secure with thin washer and nut (Fig. 7).
 4. Torque the blade bolt to 75–80 ft. lb. (101–108 N•m).
 5. Rotate the blades to ensure that there is at least 1/8 inch (3 mm) clearance between the blades and baffles.
 6. Remove jack stands and lower mower.

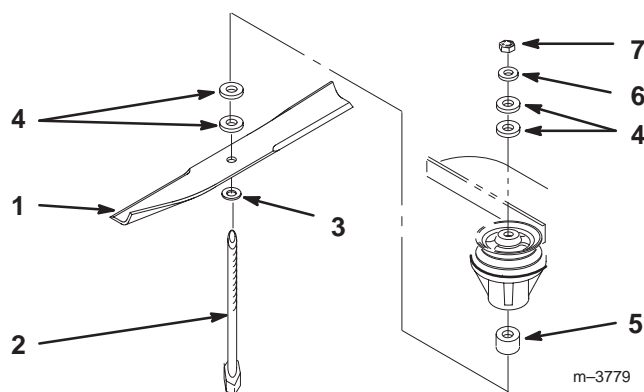


Figure 7

- | | |
|-------------------|----------------|
| 1. High-lift lade | 5. Tube |
| 2. Blade bolt | 6. Thin washer |
| 3. Cone washer | 7. Nut |
| 4. Spacer | |

Removing Baffles for Side Discharge Cutting

1. Thoroughly clean the mower.
2. Tilt the mower up and support with jack stands to ease removal of kit.
3. Remove the mounting hardware from the baffle, blocker plate, kickers and discharge cover plate.

Note: Save the hardware for use when installing the baffle.



Warning



Open holes in the mower exposes you and others to thrown debris. Debris thrown out of holes in the mower can cause injury.

- **Never operate mower without hardware mounted in all holes in mower.**
- **Install hardware in mounting holes when mulching baffle is removed.**

4. Install previously removed discharge baffle
5. Install previously removed standard blades.
6. Remove jack stands and lower mower.