



Count on it.

Parts Catalog

CrossTrax® All-Wheel Drive Kit **Reelmaster® 5010-H, 5410-D, or 5510-D** **Series Traction Unit**

Model No. 03645



Ordering Replacement Parts

To order replacement parts, please supply the part number, the quantity, and the description of each part desired.

Understanding Reference Numbers

Each identified part in an illustration has a reference number. The reference number for a part also appears in the parts list, along with other information about the part.

This catalog uses two special reference number formats, one to indicate parts in a service assembly and another to indicate the quantity of a given part in an illustration.

Service Assembly Reference Numbers

Parts in service assemblies have reference numbers in the form a:b. The a represents the reference number of the entire service assembly and the b represents a sequential number unique to each part within the service assembly.

For example, a wheel assembly might be identified by reference number 6, the tire by 6:1, the valve by 6:2, and the wheel by 6:3. When you order the assembly identified by reference number 6, you receive all parts identified by reference numbers 6:1, 6:2, and 6:3. However, you may also order any part individually. Reference numbers of this type appear in illustration and in parts lists.

Reference Numbers Indicating Quantity

In an illustration, if a reference number indicates more than one part, the reference number has the form nX y. The n represents the quantity of the part, the X is the multiplication symbol, and the y represents the reference number.

For example, in an illustration, the reference number 2X 37 means that two of the parts identified by reference number 37 are indicated.

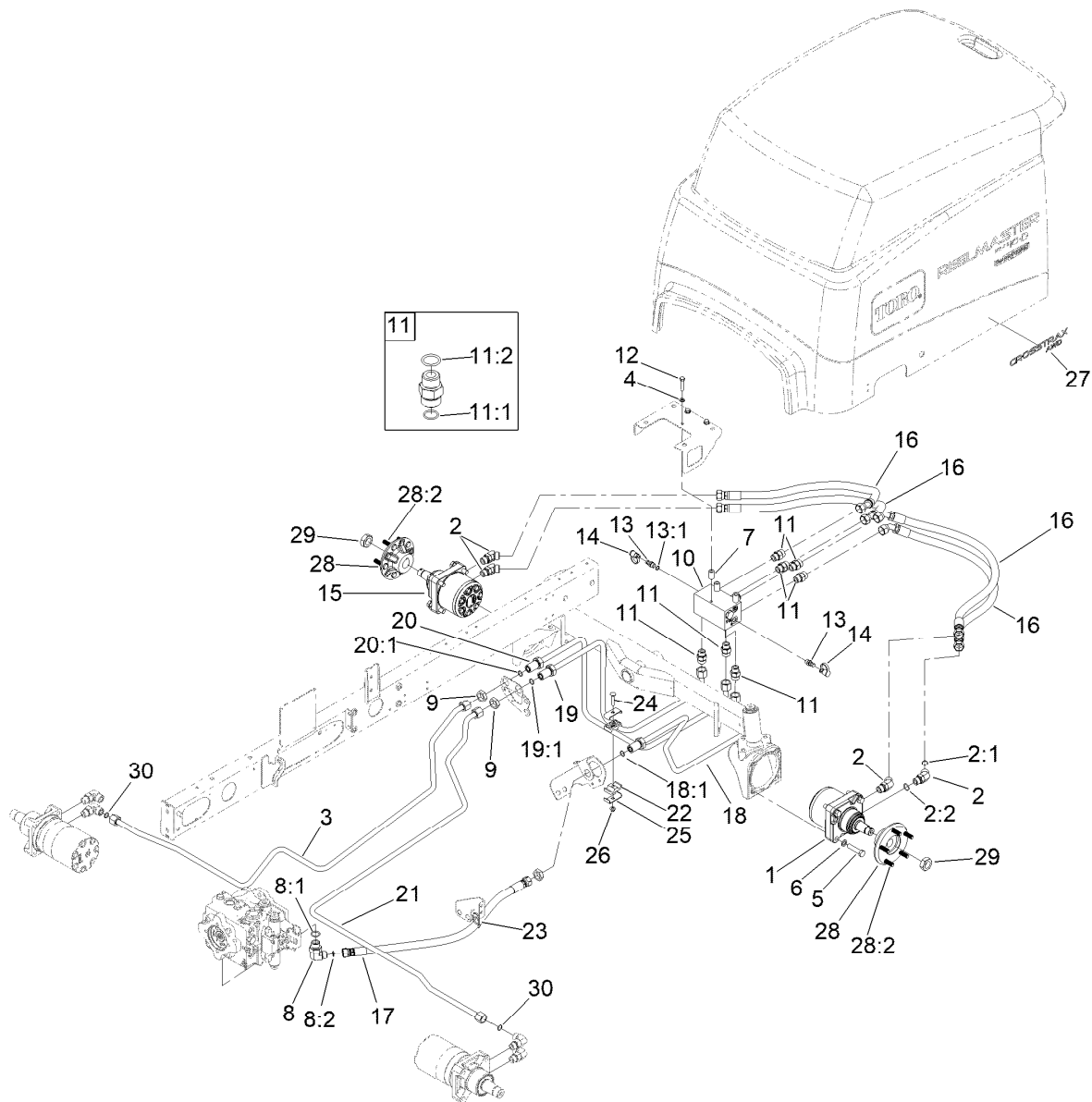
Contents

CrossTrax All-Wheel Drive Assembly 4

Hydraulic Motor Assembly No. 138-0435..... 5

Four Wheel Drive Manifold Assembly No. 108-1825 6

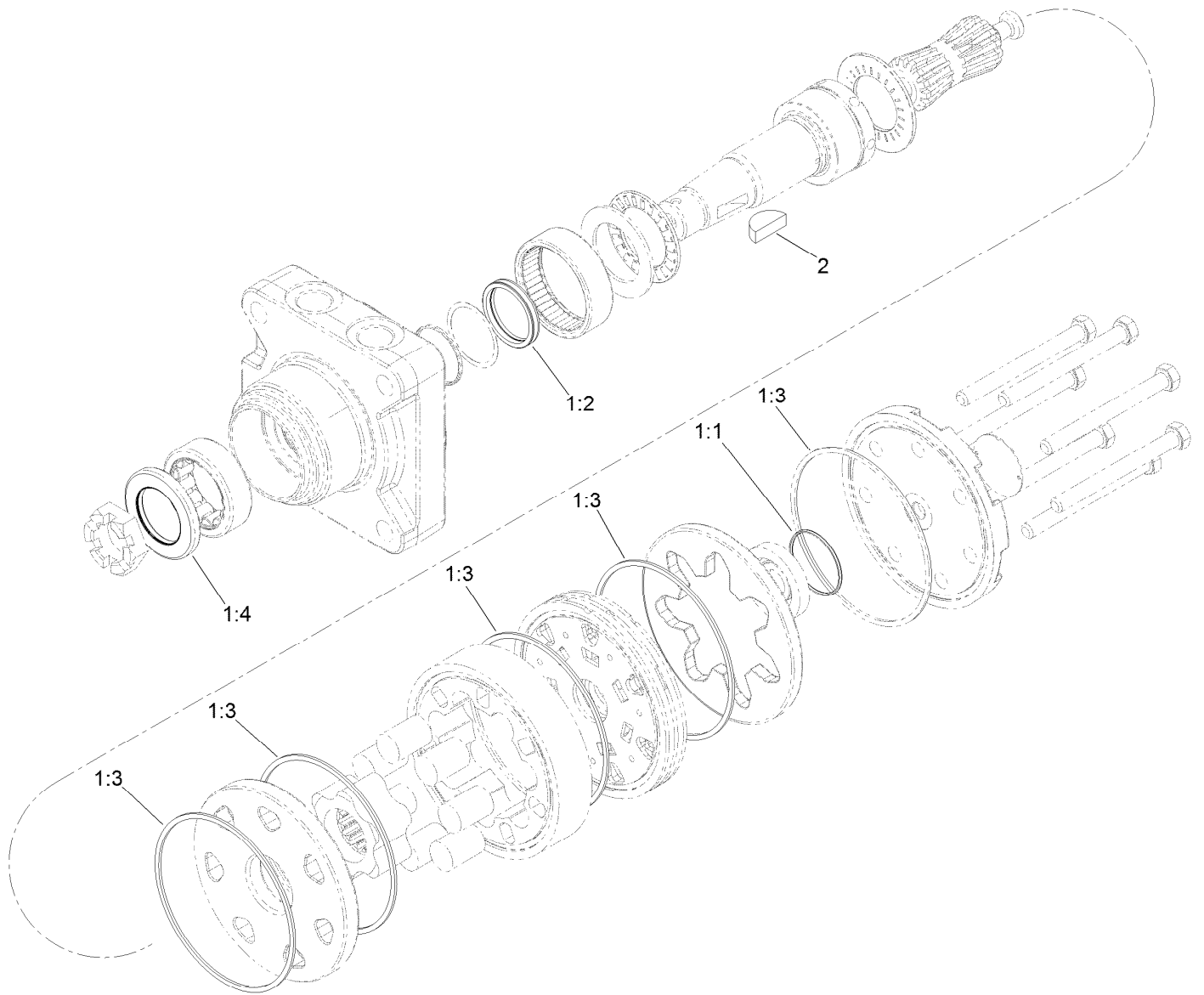
Hydraulic Motor Assembly No. 138-0436..... 7



CrossTrax All-Wheel Drive Assembly

Ref.	Part Number	Qty.	Description
1	138-0435	1	Motor-Hydraulic, CCW
2	340-14	4	Fitting-HYD, 45 DEG
2:1	237-65	1	O-Ring
2:2	237-80	1	O-Ring
3	108-7622	1	Hydraulic Tube ASM
4	3253-21	3	Washer-Lock
5	325-9	8	Screw-HH
6	3253-7	8	Washer-Lock
7	93-6981	3	Spacer
8	340-139	1	Fitting-Elbow 90
8:1	237-81	1	O-Ring
8:2	237-65	1	O-Ring
9	340-74	3	Nut-Lock, Bulkhead
10	108-1825	1	HYD Manifold ASM
11	340-7	7	Fitting-Straight
11:1	237-65	1	O-Ring
11:2	237-80	1	O-Ring
12	323-9	3	Screw-HH
13	59-7410	2	Fitting-Diagnostic
13:1	237-42	1	O-Ring
14	354-79	2	Cap-Dust

Ref.	Part Number	Qty.	Description
15	138-0436	1	Motor-Hydraulic, CW
16	106-3662	4	Hose-HYD
17	108-7645	1	Hose-HYD
18	108-7626	1	Tube ASM
18:1	237-65	1	O-Ring
19	108-7625	1	Tube ASM
19:1	237-65	1	O-Ring
20	108-7624	1	Tube ASM
20:1	237-65	1	O-Ring
21	108-7623	1	Hydraulic Tube ASM
22	56-7971	2	Clamp-Tube
23	3290-378	3	Tie-Cable
24	3230-5	1	Bolt-CARR
25	119-1419	2	Plate-Clamp
26	104-8300	1	Nut-HF, NI
27	110-8859	2	Decal
28	121-5633	2	Hub ASM
28:2	114-3918	5	Stud-Wheel
29	26-3790	2	Nut-Lock
30	237-65	2	O-Ring

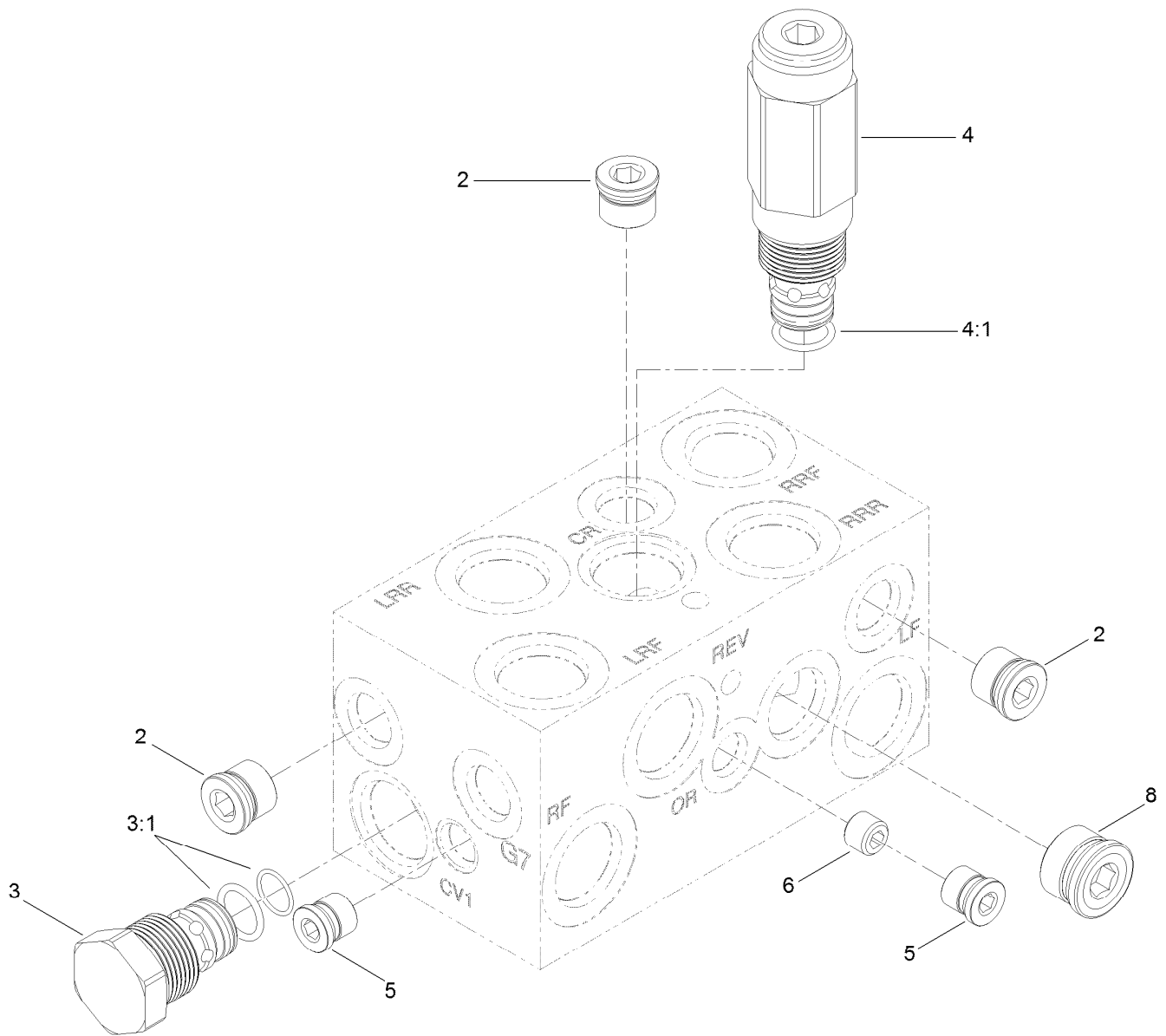


Hydraulic Motor Assembly No. 138-0435

Ref.	Part Number	Qty.	Description
1	110-8897	1	Seal Kit ●
1:1		1	Seal-Commutator, Vespel ■
1:2		1	Seal-Shaft ■
1:3		5	Seal-Body, Buna ■
1:4		1	Seal-Dirt / Water ■
2	3257-42	1	Key-Woodruff

● Not illustrated

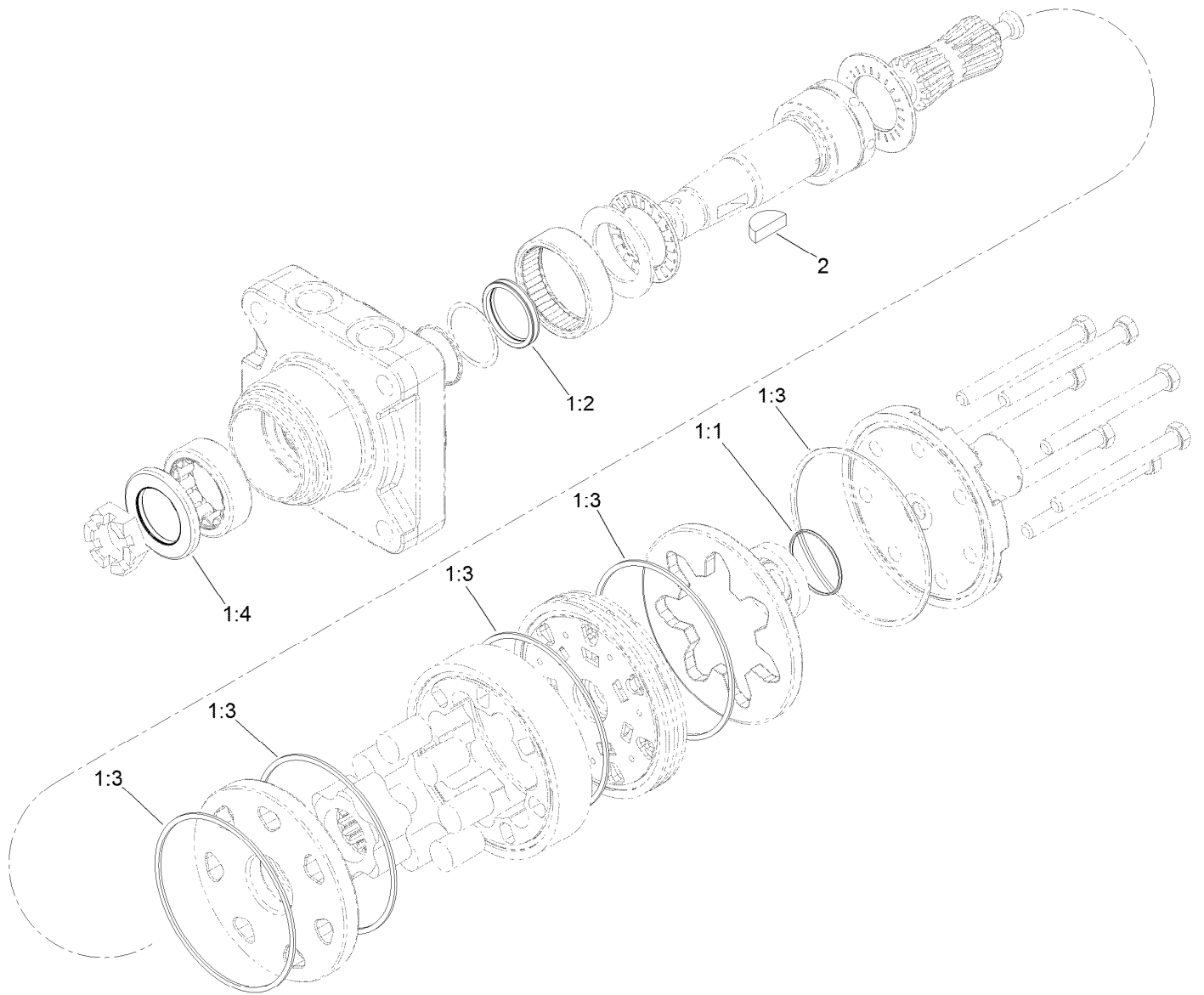
■ Not serviced separately



Four Wheel Drive Manifold Assembly No. 108-1825

Ref.	Part Number	Qty.	Description
2	106-1026	3	Plug-HYD
3	110-8881	2	Valve-Check
3:1	105-9159	1	Seal Kit ●
4	110-8882	1	Valve-Relief, Cross Over
4:1	110-6316	1	Seal Kit
5	106-1025	2	Plug-HYD
6	110-8883	1	Plug-Orifice (0.040)
8	106-1027	1	Plug

● Not illustrated



Hydraulic Motor Assembly No. 138-0436

Ref.	Part Number	Qty.	Description
1	110-8897	1	Seal Kit ●
1:1		1	Seal-Commutator, Vespel ■
1:2		1	Seal-Shaft ■
1:3		5	Seal-Body, Buna ■
1:4		1	Seal-Dirt / Water ■
2	3257-42	1	Key-Woodruff

● Not illustrated

■ Not serviced separately



Count on it.