



Count on it.

Form No. 3437-100 Rev B

Parts Catalog

Auxiliary Hydraulic Kit Groundsmaster® 3200 or 3300 Series Traction Unit

Model No. 31966



Ordering Replacement Parts

To order replacement parts, please supply the part number, the quantity, and the description of each part desired.

Understanding Reference Numbers

Each identified part in an illustration has a reference number. The reference number for a part also appears in the parts list, along with other information about the part.

This catalog uses two special reference number formats, one to indicate parts in a service assembly and another to indicate the quantity of a given part in an illustration.

Service Assembly Reference Numbers

Parts in service assemblies have reference numbers in the form a:b. The a represents the reference number of the entire service assembly and the b represents a sequential number unique to each part within the service assembly.

For example, a wheel assembly might be identified by reference number 6, the tire by 6:1, the valve by 6:2, and the wheel by 6:3. When you order the assembly identified by reference number 6, you receive all parts identified by reference numbers 6:1, 6:2, and 6:3. However, you may also order any part individually. Reference numbers of this type appear in illustration and in parts lists.

Reference Numbers Indicating Quantity

In an illustration, if a reference number indicates more than one part, the reference number has the form nX y. The n represents the quantity of the part, the X is the multiplication symbol, and the y represents the reference number.

For example, in an illustration, the reference number 2X 37 means that two of the parts identified by reference number 37 are indicated.

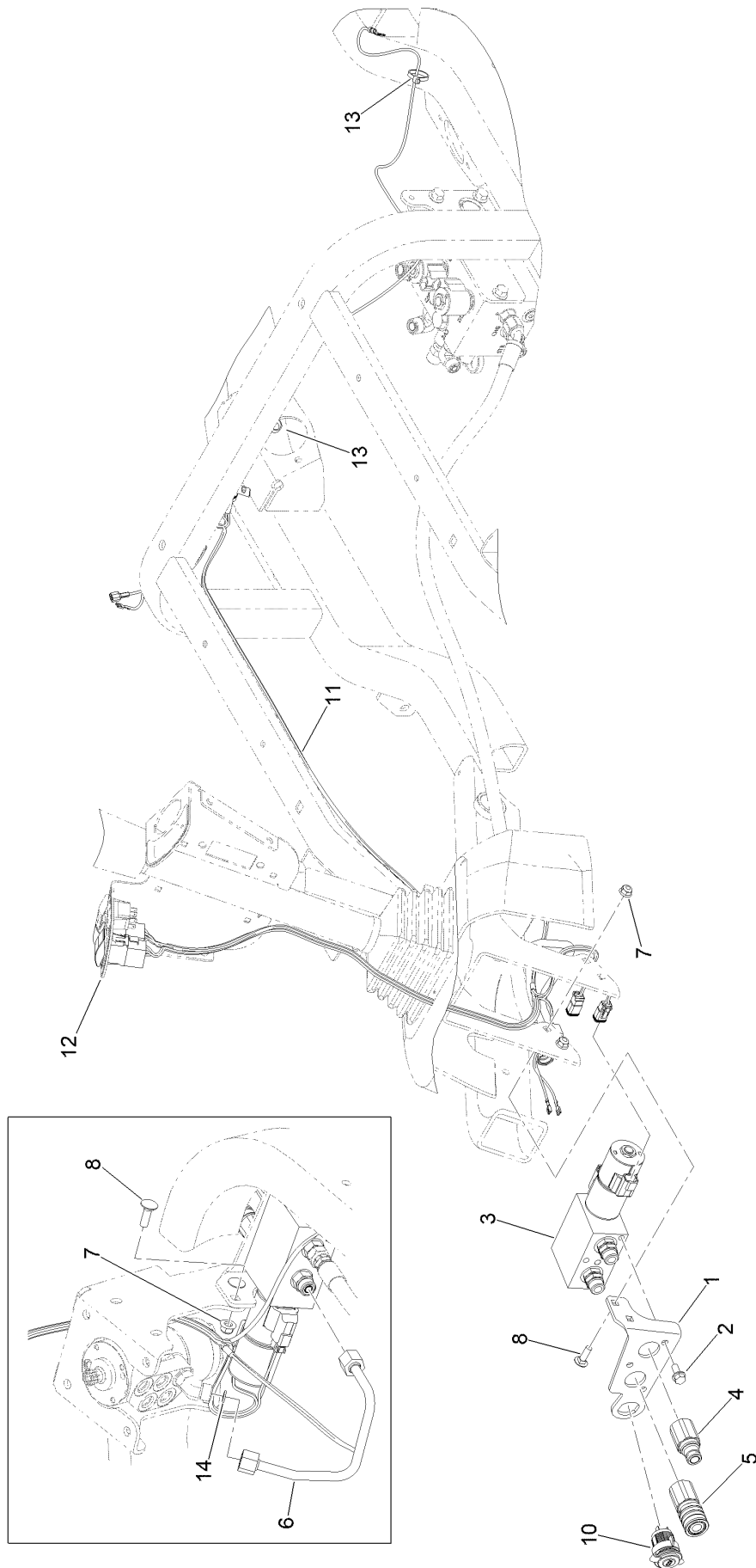
Contents

Auxiliary Hydraulic Kit Assembly 4

Auxiliary Manifold Assembly No. 140-3061 6

Auxiliary Hydraulic Wire Harness Assembly No. 122-1774 8

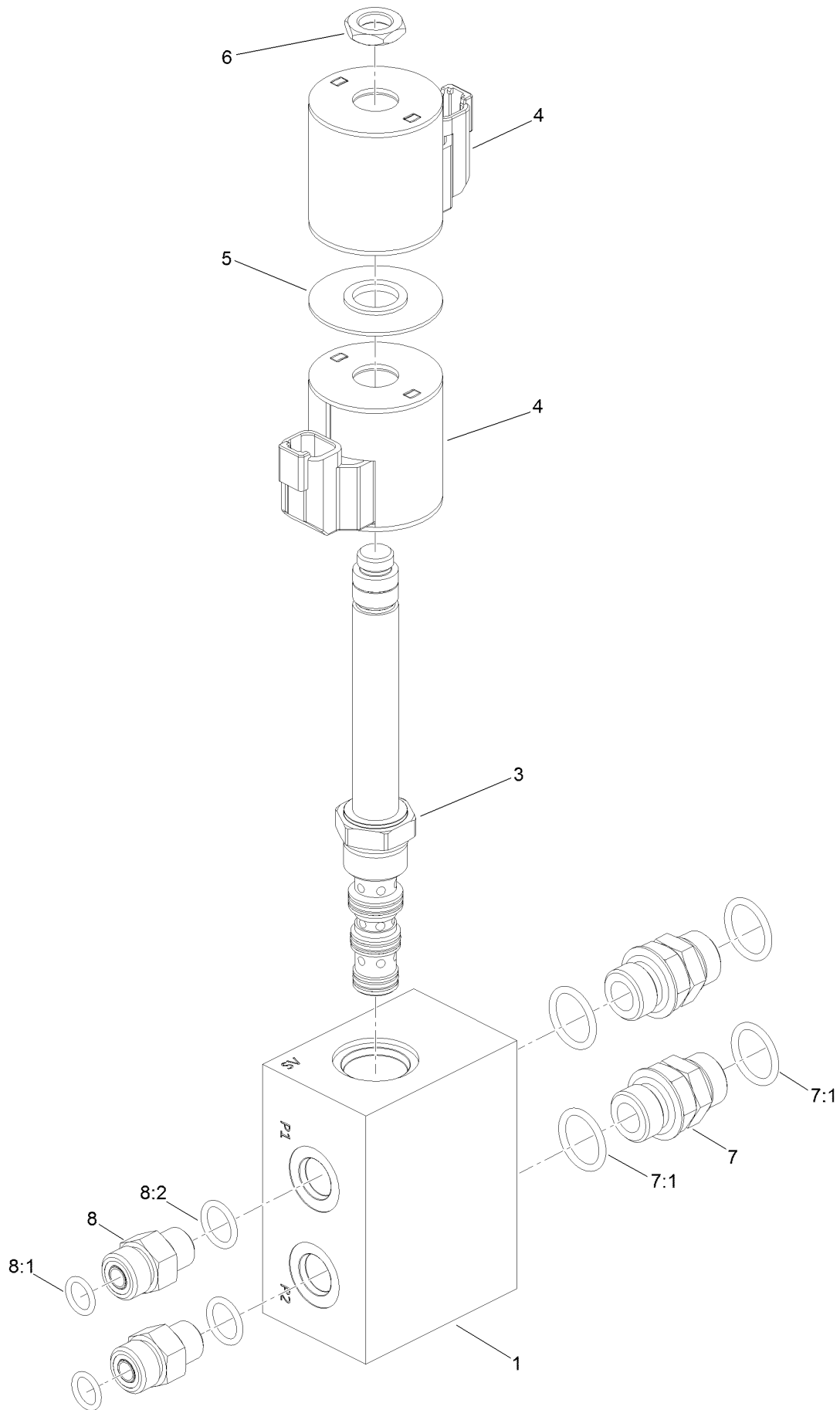
Auxiliary Hydraulic Kit Assembly



Auxiliary Hydraulic Kit Assembly (continued)

<i>Ref.</i>	<i>Part Number</i>	<i>Qty.</i>	<i>Description</i>	<i>Ref.</i>	<i>Part Number</i>	<i>Qty.</i>	<i>Description</i>
1	140-3099-03	1	Support-Manifold	8	3230-2	2	Bolt-CARR
2	3234-5	3	Screw-HHF	10	109-9376	1	Receptacle-12V
3	140-3061	1	Auxiliary Manifold ASM	11	122-1774	1	Harness-Wire, Aux HYD
4	131-6057	1	Fitting-Quick Coupling	12	100-1535	2	Switch-Rocker, (On)-Off-(On)
5	131-6058	1	Fitting-Quick Coupling	13	3290-378	2	Tie-Cable
6	140-3098	1	Hydraulic Tube ASM	14	237-22	2	O-Ring
7	104-8300	2	Nut-HF, NI				

Auxiliary Manifold Assembly No. 140-3061

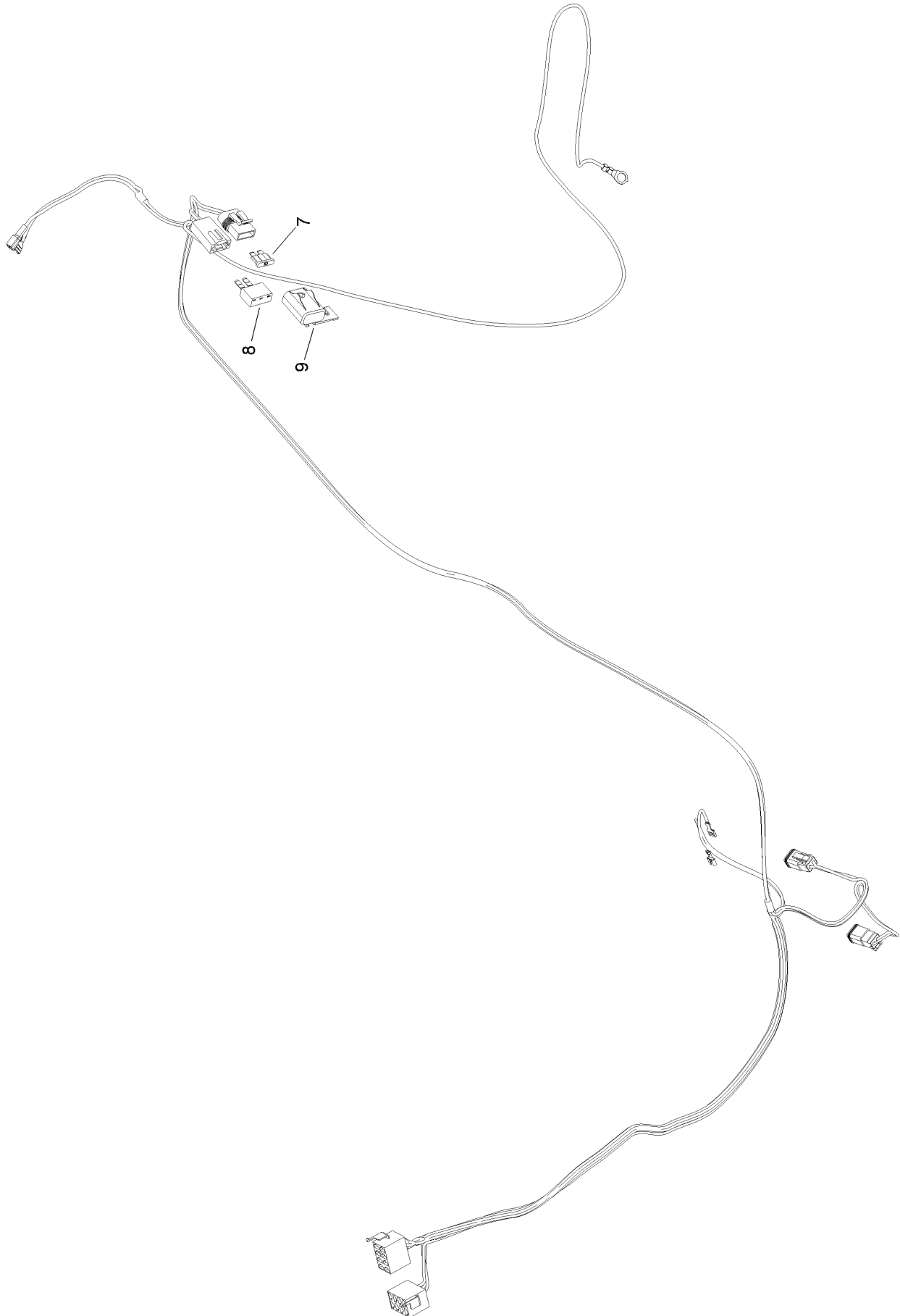


Auxiliary Manifold Assembly No. 140-3061 (continued)

<i>Ref.</i>	<i>Part Number</i>	<i>Qty.</i>	<i>Description</i>	<i>Ref.</i>	<i>Part Number</i>	<i>Qty.</i>	<i>Description</i>
1		1	Manifold Block ●	7	95-3209	2	Fitting-Thread, Straight
3	HYD13974	1	Valve,3 Position,4 Way,Open Center	7:1	237-79	2	O-Ring
4	119-4619	2	Coil-Solenoid	8	340-2	2	Fitting-Straight
5	117-8316	1	Spacer-E Coil	8:1	237-22	1	O-Ring
6	110-2634	1	Nut-Coil	8:2	237-42	1	O-Ring

● Not serviced separately

Auxiliary Hydraulic Wire Harness Assembly No. 122-1774



Auxiliary Hydraulic Wire Harness Assembly

No. 122-1774 (continued)

<i>Ref.</i>	<i>Part Number</i>	<i>Qty.</i>	<i>Description</i>
7	218-578	1	Fuse-Blade, 10 Amp
8	99-7431	1	Fuse-Thermal, 15 Amp
9	32180-019	1	Cover-Fuse, Single

Notes:

Notes:



Count on it.