



**Count on it.**

**Parts Catalog**

**GreensPro® 1700**

**Greens Roller**

Model No. 44914—Serial No. 40000000 and Up



# Ordering Replacement Parts

To order replacement parts, please supply the part number, the quantity, and the description of each part desired.

## Understanding Reference Numbers

Each identified part in an illustration has a reference number. The reference number for a part also appears in the parts list, along with other information about the part.

This catalog uses two special reference number formats, one to indicate parts in a service assembly and another to indicate the quantity of a given part in an illustration.

## Service Assembly Reference Numbers

Parts in service assemblies have reference numbers in the form a:b. The a represents the reference number of the entire service assembly and the b represents a sequential number unique to each part within the service assembly.

For example, a wheel assembly might be identified by reference number 6, the tire by 6:1, the valve by 6:2, and the wheel by 6:3. When you order the assembly identified by reference number 6, you receive all parts identified by reference numbers 6:1, 6:2, and 6:3. However, you may also order any part individually. Reference numbers of this type appear in illustration and in parts lists.

## Reference Numbers Indicating Quantity

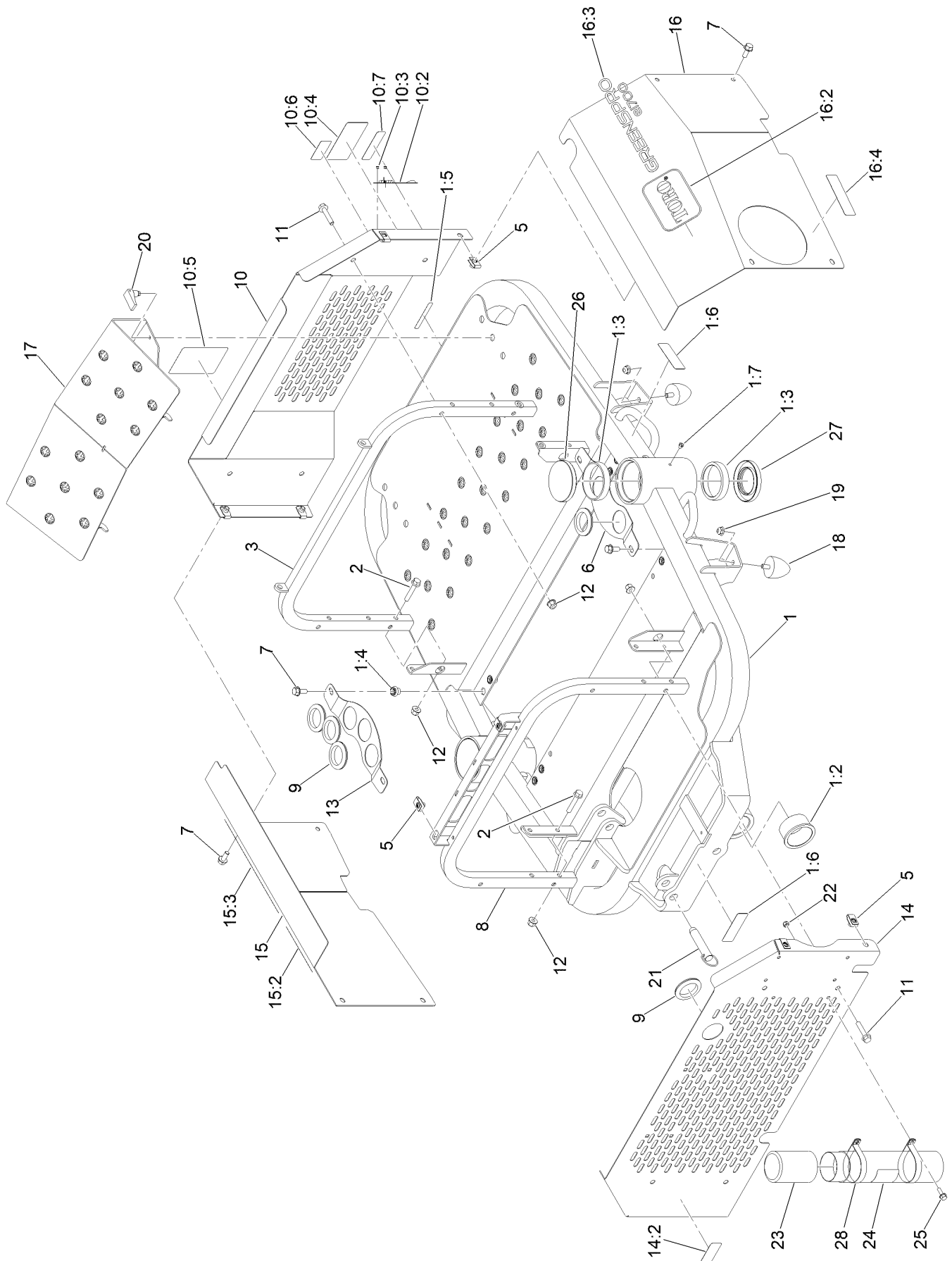
In an illustration, if a reference number indicates more than one part, the reference number has the form nX y. The n represents the quantity of the part, the X is the multiplication symbol, and the y represents the reference number.

For example, in an illustration, the reference number 2X 37 means that two of the parts identified by reference number 37 are indicated.

# Contents

Chassis Assembly .....	4
Steering Mechanism Assembly .....	6
Roller Assembly .....	8
Seat Assembly .....	10
Operator Platform Assembly .....	12
Drawbar Assembly .....	14
Lifting Mechanism Assembly .....	16
Hub and Bearing Assembly No. 117-5115 .....	18
Tire and Wheel Assembly No 142-5511 .....	20
Electrical and Battery Assembly .....	22
Battery Assembly .....	24
Battery Assembly No. 145-5320 .....	26
Main Wire Harness Assembly No. 122-4193 .....	28
Controller Assembly .....	30
Attachments and Accessories .....	32

# Chassis Assembly



## Chassis Assembly (continued)

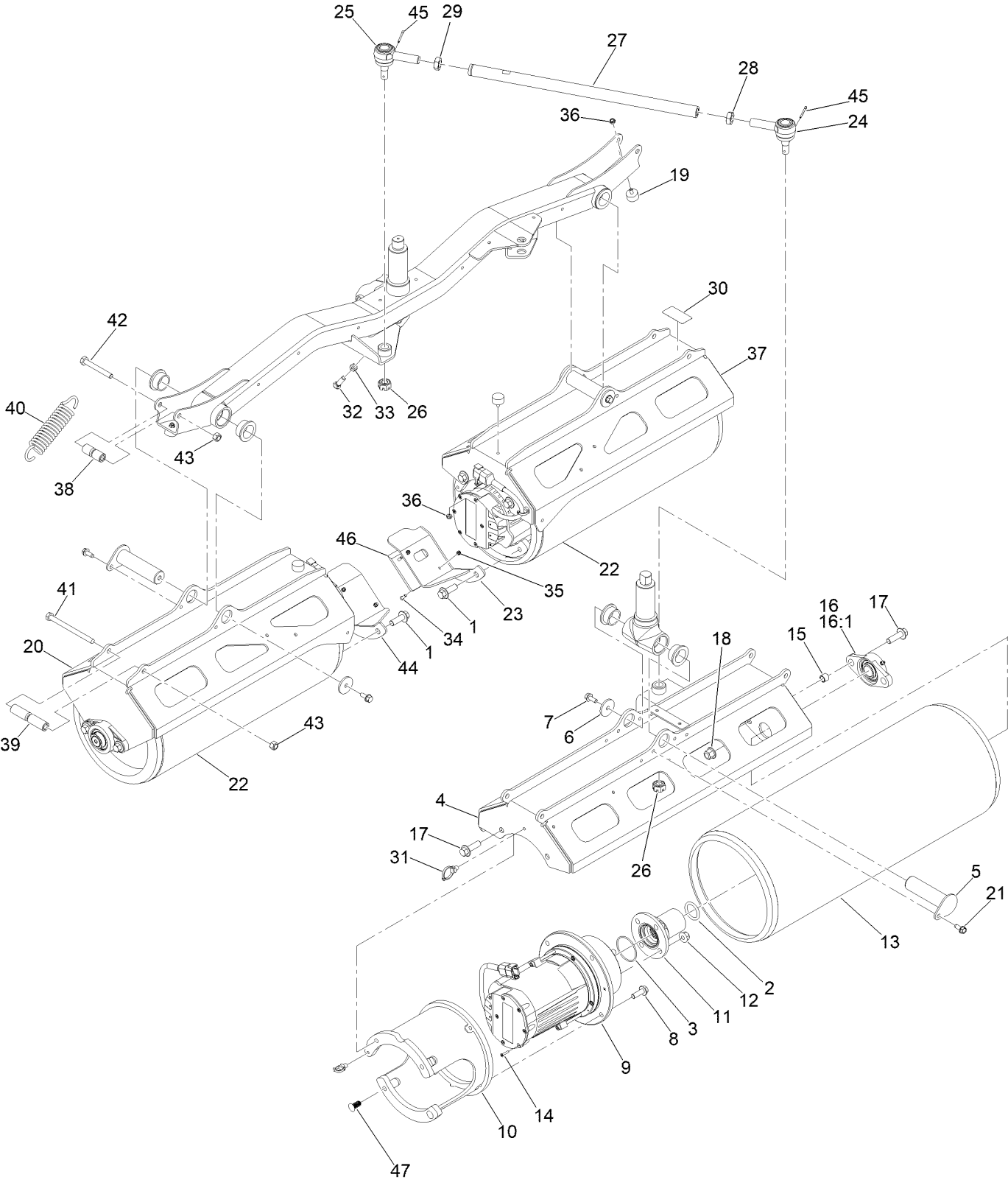
<i>Ref.</i>	<i>Part Number</i>	<i>Qty.</i>	<i>Description</i>	<i>Ref.</i>	<i>Part Number</i>	<i>Qty.</i>	<i>Description</i>
1	163-8129	1	Main Frame ASM	13	163-8078-01	1	Panel-Cleanout, LH
1:2	93-4665	4	Bushing-Flange	14	163-8136	1	Rear Cover ASM
1:3	254-66	4	Cup-Bearing, Roller	14:2	137-8127	1	Decal-No Spray
1:4	161-7799	8	Nut-Clinch	15	163-8134	1	LH Cover ASM
1:5	133-8061	1	Decal-Warning	15:2	67-1300	1	Decal
1:6	120-0625	3	Decal-Warning	15:3	161-9149	1	Decal-Greenspro 1700
1:7	1-811010	2	Plug	16	163-8135	1	RH Cover ASM
2	33104-045	6	Screw-HHF	16:2	67-1300	1	Decal
3	161-9177-01	1	Tube-Support, Front	16:3	161-9149	1	Decal-Greenspro 1700
5	142-9904	10	Nut-U	16:4	144-7008	1	Decal-Service, Shut-Off
6	161-2278-01	1	Panel-Cleanout	17	163-8087-01	1	Footrest
7	134-3746	12	Screw-HHF	18	114-1926	2	Bumper-Rubber
8	161-9178-01	1	Tube-Support, Rear	19	119-4041	2	Nut-HF
9	130-8743	6	Grommet	20	74-5950	2	Latch-Swell
10	163-8133	1	Front Cover ASM	21	144-6766	1	Pin, Lock
10:2	144-6628	1	Plate-Cover, Spring	22	09438	2	Nut-Nyloc
10:3	3269-32	2	Rivet-Pop	23	104-7048	1	Cap-Housing
10:4	147-0289	1	Decal-Charging Port	24	104-7050	1	Tube-Manual
10:5	161-9152	1	Decal-Warning	25	134-3740	2	Screw-HHF
10:6	137-8127	1	Decal-No Spray	26	163-8066	2	Cap-End, Ec Profile
10:7	140-4590	1	Decal-Charger Input Lithium	27	163-8065	2	Seal-Shaft
11	33104-040	8	Screw-HHF	28	107-1865	2	R-Clamp
12	134-3762	14	Nut-Flange, NI				



## Steering Mechanism Assembly (continued)

<i>Ref.</i>	<i>Part Number</i>	<i>Qty.</i>	<i>Description</i>	<i>Ref.</i>	<i>Part Number</i>	<i>Qty.</i>	<i>Description</i>
1	163-8138	1	Roller Hanger ASM	6:2	60-0080	4	Bushing
1:2	60-0080	2	Bushing	7	147-3391	1	Actuator-Steering
2	3-6498	2	Washer-Thrust	8	110-4888	2	Washer-Spacer
3	254-65	4	Bearing-Roller, Cone	9	32120-93	2	Ring-Retaining
4	137-8171	2	Washer	10	161-2207	1	Pin-Clevis
5	137-7942	2	Nut-Castle	11	137-7943	2	Washer-Tang
6	163-8130	1	Outer Roller Lift Arm ASM	12	32151-36	1	Ring-Retaining

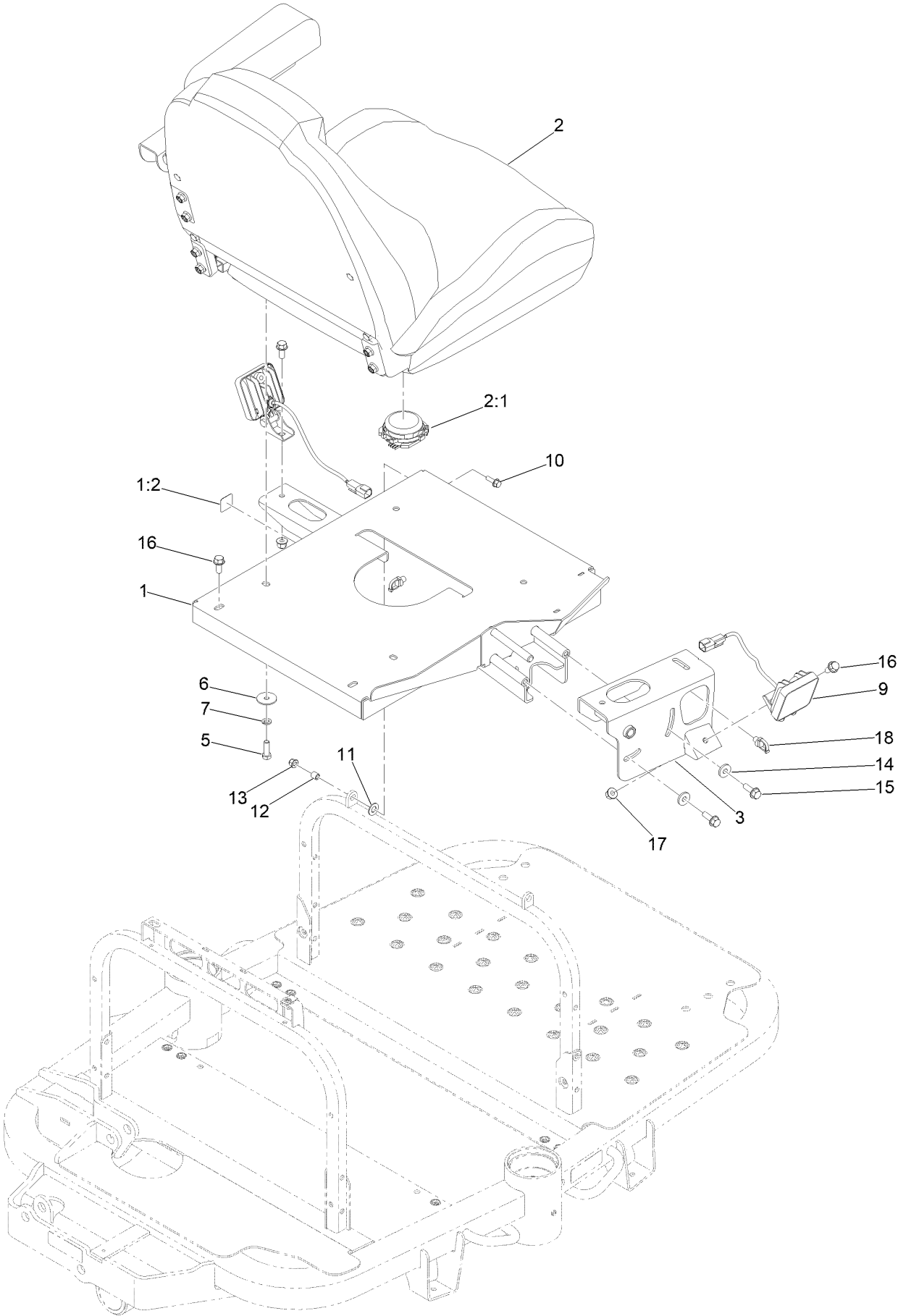
# Roller Assembly



## Roller Assembly (continued)

<i>Ref.</i>	<i>Part Number</i>	<i>Qty.</i>	<i>Description</i>	<i>Ref.</i>	<i>Part Number</i>	<i>Qty.</i>	<i>Description</i>
1	134-3756	4	Screw-HHF	24	144-3901	1	End-Rod, Tie
2	163-8097	3	O-Ring	25	144-3902	1	End-Rod, Tie
3	163-8098	3	O-Ring	26	140-6135	2	Nut-Hex, Slotted
4	161-2228-01	1	Shell-Roller, Center	27	161-7759-03	1	Rod-Steering
5	161-3266	3	Pin-Flag	28	84-5300	1	Nut-Jam
6	164-2650	3	Washer-Flat	29	110-5337	1	Nut-Jam
7	134-3746	3	Screw-HHF	30	119-6807	1	Decal-Warning
8	134-3752	12	Screw-HHF	31	32180-030	6	Clip-Tie
9	147-8361	3	Motor-Roller	32	AU419-2624	1	Screw-Plow
10	161-2232-03	3	Mount-Motor, Roller	33	3217-7	1	Nut-Hex
11	163-8099	3	Coupler-Roller	34	119-7568	4	Screw-HSBH
12	144-2269	12	Nut-Nylk,HF	35	09430	4	Nut-Nyloc
13	161-2286-03	1	Roller-Center	36	3296-56	4	Nut-Lock, NI
14	147-6042	18	Screw-Tfh	37	161-2218-01	1	Roller Shell-Outer, RH
15	131-6367	6	Spacer	38	163-8067	2	Sleeve-Spring, Short
16	111-5744	3	Bearing ASM	39	163-8068	2	Sleeve-Spring, Long
16:1	111-5758	1	Bearing	40	108-5412	2	Spring-Extension
17	134-3757	12	Screw-HHF	41	33115-130	2	Screw-HH
18	134-3764	6	Nut-Flange, NI	42	33115-080	2	Screw-HH
19	240-14	4	Bumper-Rubber	43	33025-00	4	Nut-Lock, NI
20	161-2227-01	1	Shell-Roller, Outer	44	163-8093-03	1	Stop-Tilt, LH
21	134-2299	3	Screw-HWH	45	3272-12	2	Pin-Cotter
22	161-2285-03	2	Roller-Outer	46	163-8149	2	Pad-Wear
23	161-9102-03	1	Stop-Tilt	47	140-2149	2	Rivet-Push

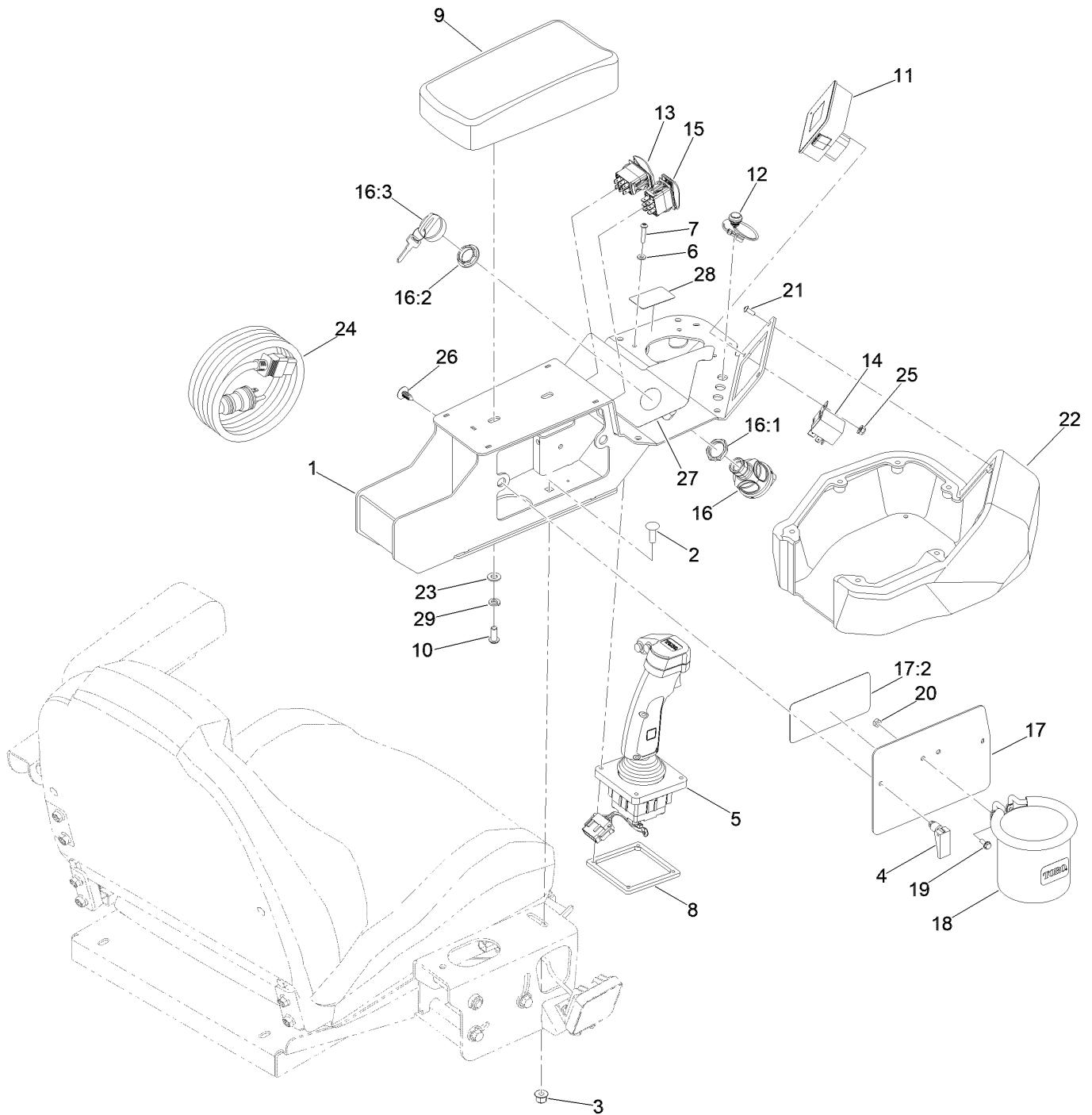
# Seat Assembly



## Seat Assembly (continued)

<i>Ref.</i>	<i>Part Number</i>	<i>Qty.</i>	<i>Description</i>	<i>Ref.</i>	<i>Part Number</i>	<i>Qty.</i>	<i>Description</i>
1	161-9195	1	Seat Base ASM	10	134-3740	2	Screw-HHF
1:2	147-0290	1	Decal-Light, Warning	11	09479	2	Washer-Plain
2	161-9144	1	Seat	12	161-7700	2	Spacer
2:1	163-8079	1	Switch-Seat	13	134-3761	2	Nut-Flange, NI
3	161-9124-01	1	Pivot-Console	14	4-2390	2	Washer-Flat
5	322-5	4	Screw-HH	15	134-3747	2	Screw-HHF
6	3256-57	4	Washer-Flat	16	134-3746	4	Screw-HHF
7	3253-4	4	Washer-Lock	17	134-3762	2	Nut-Flange, NI
9	145-2598	2	Light-Work, LED	18	32180-030	2	Clip-Tie

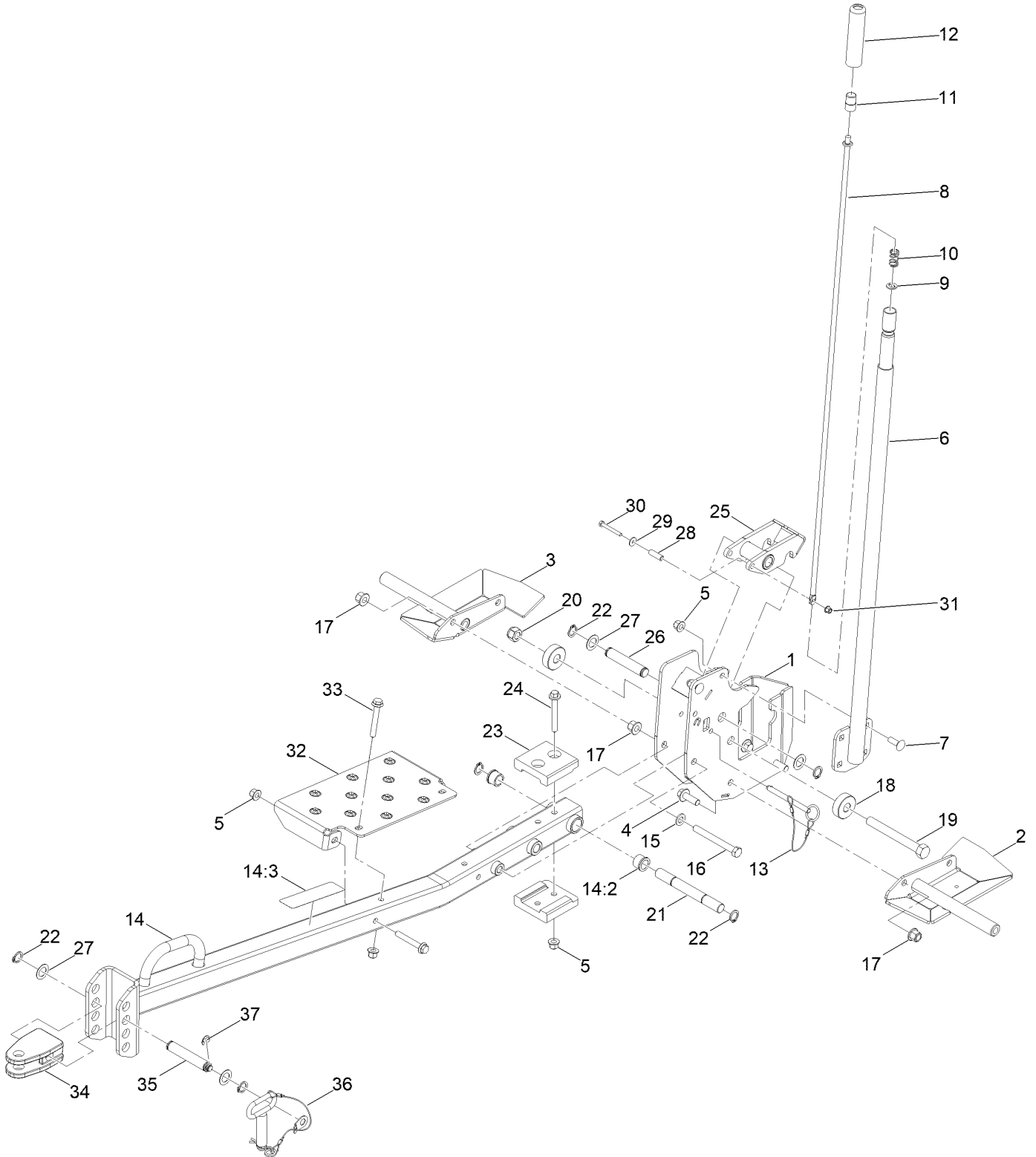
# Operator Platform Assembly



## Operator Platform Assembly (continued)

<i>Ref.</i>	<i>Part Number</i>	<i>Qty.</i>	<i>Description</i>	<i>Ref.</i>	<i>Part Number</i>	<i>Qty.</i>	<i>Description</i>
1	163-8057-01	1	Console-Control	16:2	122-2704	1	Nut-Face, M22 (Plastic)
2	94-2738	2	Screw-CARR	16:3	121-5162	1	Set-Key, Ignition
3	134-3762	2	Nut-Flange, NI	17	163-8137	1	Side Cover ASM
4	74-5950	2	Latch-Swell	17:2	163-8125	1	Decal-Service
5	161-7798	1	Pq Pistol Grip Joystick	18	161-8355	1	Cup Holder ASM
6	3256-51	4	Washer-Flat	19	3290-321	2	Screw-HWH
7	108-3153	4	Screw-HSBH	20	3296-2	2	Nut-Lock, NI
8	161-0497	1	Plate-Retaining	21	135-6374	9	Screw-HSBH
9	161-9163	1	Pad-Arm	22	163-8050	1	Cover-Console
10	3274-55	2	Screw-HSBH	23	120-9683	2	Washer-Plain
11	122-2152	1	Controller, Tdm-1601	24	107-0382	1	Powercord-AC, Europe
12	136-9678	3	Cable Assy-Pushbutton	24	107-0383	1	Powercord-AC, U.K.
13	122-3610	1	Switch-Rocker, On-Off-On	24	107-0384	1	Powercord-AC
14	122-3200	1	Relay	25	138-0719	1	Nut-HF
15	122-3611	1	Switch-Rocker, (On)-Off-(On)	26	117-2382	3	Plug-Plastic
16	122-2513	1	Switch-Ignition, Suns	27	161-9142	1	Decal-Console
16:1	121-5160	1	Nut-Hex	28	164-2661	1	Decal-Joystick
				29	3253-4	2	Washer-Lock

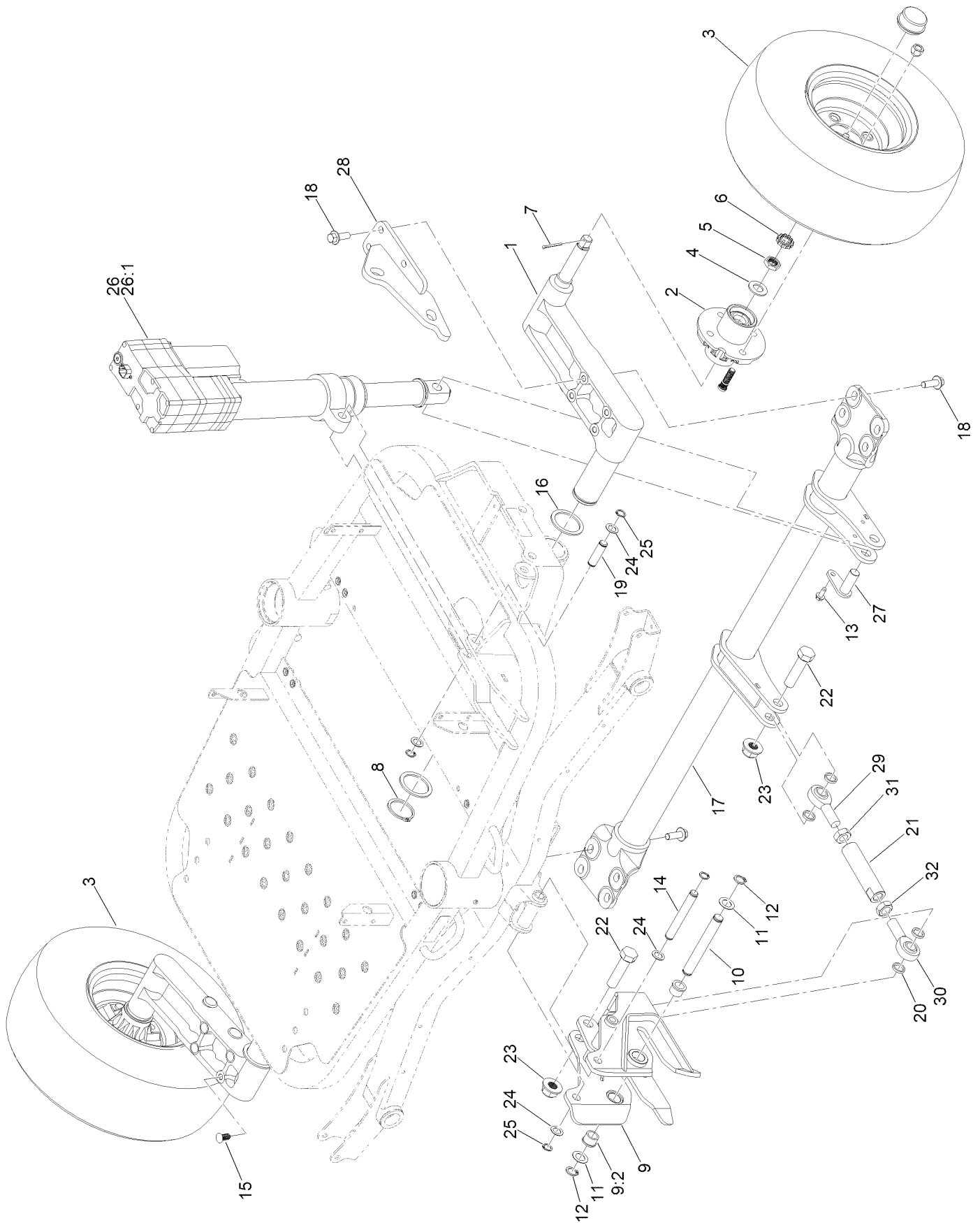
# Drawbar Assembly



## Drawbar Assembly (continued)

<i>Ref.</i>	<i>Part Number</i>	<i>Qty.</i>	<i>Description</i>	<i>Ref.</i>	<i>Part Number</i>	<i>Qty.</i>	<i>Description</i>
1	161-7738-01	1	Skid-Qtach	19	09690	1	Bolt
2	161-9105-01	1	Skid-Qtach, LH	20	09456	1	Nut
3	161-9106-01	1	Skid-Qtach, RH	21	161-7789	1	Pin-Clevis
4	134-3756	4	Screw-HHF	22	32120-93	6	Ring-Retaining
5	134-3763	9	Nut-Flange, NI	23	161-7794	2	Block-Wear
6	161-7741-01	1	Handle-Latch	24	33105-080	2	Screw-HHF
7	33125-030	3	Screw-CARR	25	161-7719	1	Latch ASM
8	161-7742	1	Rod-Latch Release	26	161-7747	1	Pin-Clevis
9	161-7797	1	Washer-Special	27	3-6498	4	Washer-Thrust
10	114-8187	1	Spring-Compression	28	161-7744	1	Spacer Tube
11	115-2750	1	Knob	29	111-7679	1	Washer-Plain
12	115-3592	1	Grip	30	33113-050	1	Screw-HH
13	163-8083	1	Pin-Quick W/Lnyd	31	134-3761	1	Nut-Flange, NI
14	161-7793	1	Drawbar ASM	32	161-7787-01	1	Step-Drawbar
14:2	256-113	2	Bushing-Flange	33	33105-070	4	Screw-HHF
14:3	161-9148	1	Decal-Hitch Release	34	161-3264	1	Clevis-Hitch
15	134-2623	1	Washer-Thrust	35	161-7796	1	Pin-Clevis
16	33116-110	1	Screw-HH	36	161-4477	1	ROPS Pin ASM
17	134-3764	5	Nut-Flange, NI	37	32120-47	1	Ring-Retaining, External
18	161-7783	2	Spacer				

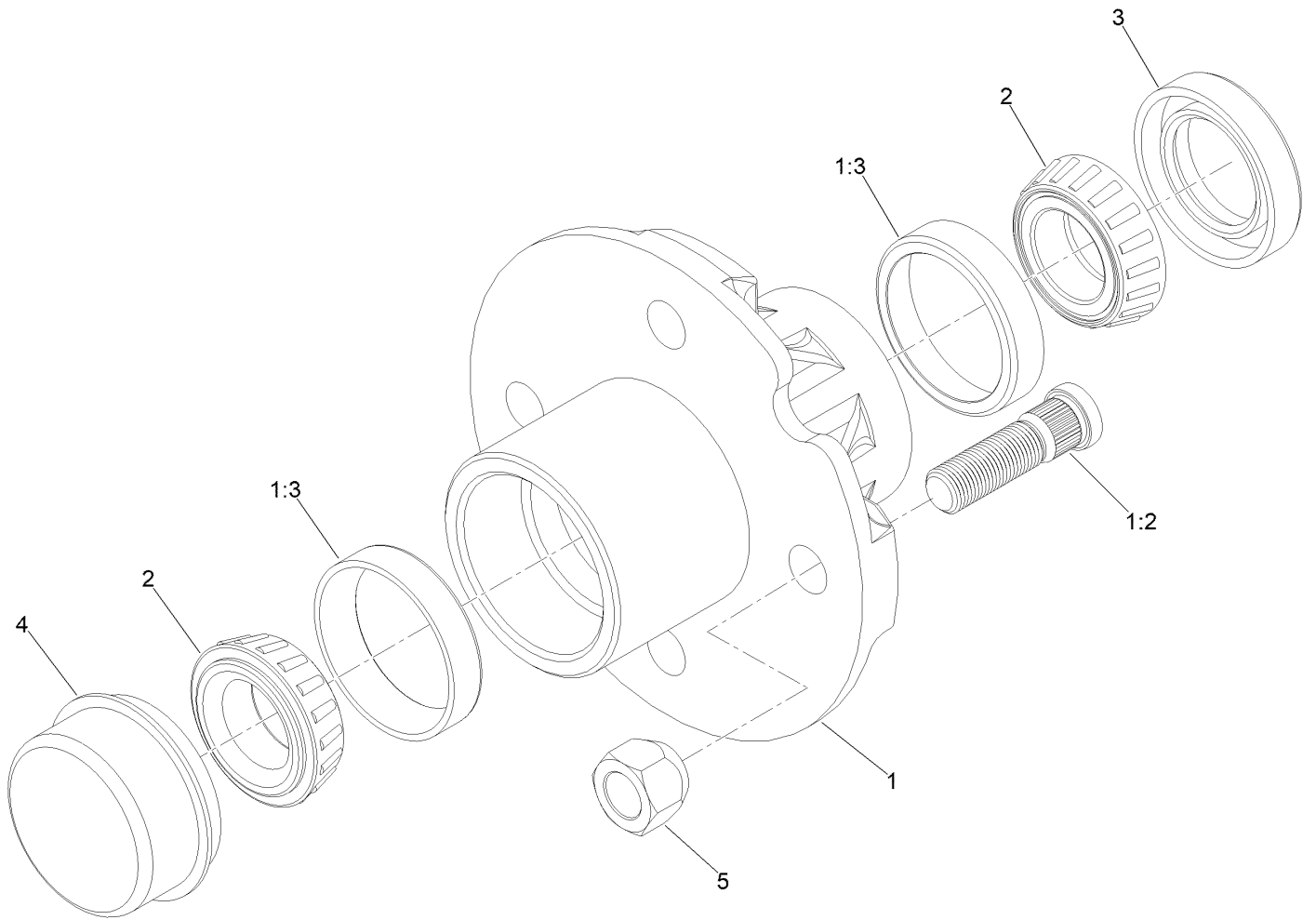
# Lifting Mechanism Assembly



## Lifting Mechanism Assembly (continued)

<i>Ref.</i>	<i>Part Number</i>	<i>Qty.</i>	<i>Description</i>	<i>Ref.</i>	<i>Part Number</i>	<i>Qty.</i>	<i>Description</i>
1	161-0546	2	Support-Wheel	17	163-8107-03	1	Tube-Lift
2	117-5115	2	Hub And Bearing ASM	18	134-3756	12	Screw-HHF
3	142-5511	2	Tire/Rim ASM	19	161-7764	1	Pin-Pivot
4	117-8259	2	Washer-Spindle	20	164-2651	4	Washer-Flat
5	117-8260	2	Nut	21	164-2652	1	Rod-Lift
6	93-0307	2	Nut-Lock, Retainer	22	328-25	2	Screw-HH
7	3272-18	2	Pin-Cotter	23	138-4082	2	Nut-HF
8	AU103-16200	2	Ring-Retaining, External	24	108-0015	4	Washer-Flat
9	161-7795	1	Qtach Hanger ASM	25	32151-62	4	Ring-Retaining
9:2	256-113	2	Bushing-Flange	26	147-3392	1	Actuator-Lift
10	161-7760	1	Pin-Clevis	26:1	302-5	1	Fitting-Grease
11	3-6498	2	Washer-Thrust	27	163-8142	1	Pin ASM
12	32120-93	2	Ring-Retaining	28	161-7758-03	1	Bracket-Lockout
13	134-2299	1	Screw-HWH	29	164-2654	1	Bearing-Rod End, RH
14	163-8077	1	Pin-Pivot	30	164-2655	1	Bearing-Rod End, LH
15	140-2149	4	Rivet-Push	31	3220-17	1	Nut-Jam, LH
16	163-8082	4	Washer-Flat	32	3220-7	1	Nut-Jam

# Hub and Bearing Assembly No. 117-5115

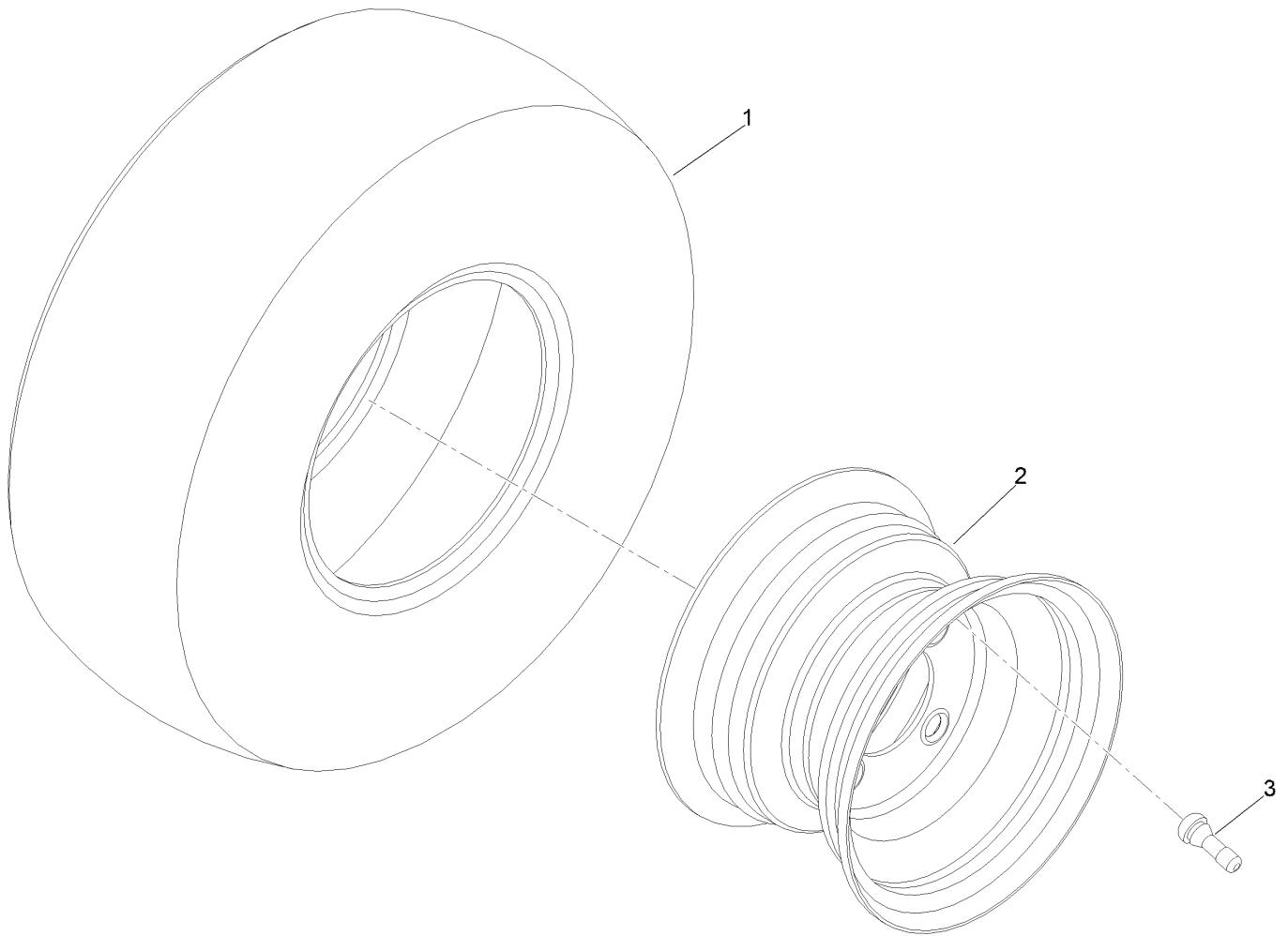


# Hub and Bearing Assembly No. 117-5115 (continued)

<i>Ref.</i>	<i>Part Number</i>	<i>Qty.</i>	<i>Description</i>
1	117-8251	1	Hub ASM
1:2	114-3918	4	Stud-Wheel
1:3	254-72	2	Bearing-Cup, Tapered
2	254-94	2	Bearing-Cone, Tapered

<i>Ref.</i>	<i>Part Number</i>	<i>Qty.</i>	<i>Description</i>
3	112-1690	1	Seal-Oil
4	241-119	1	Cap-Dust
5	139-2564	4	Nut-Lug

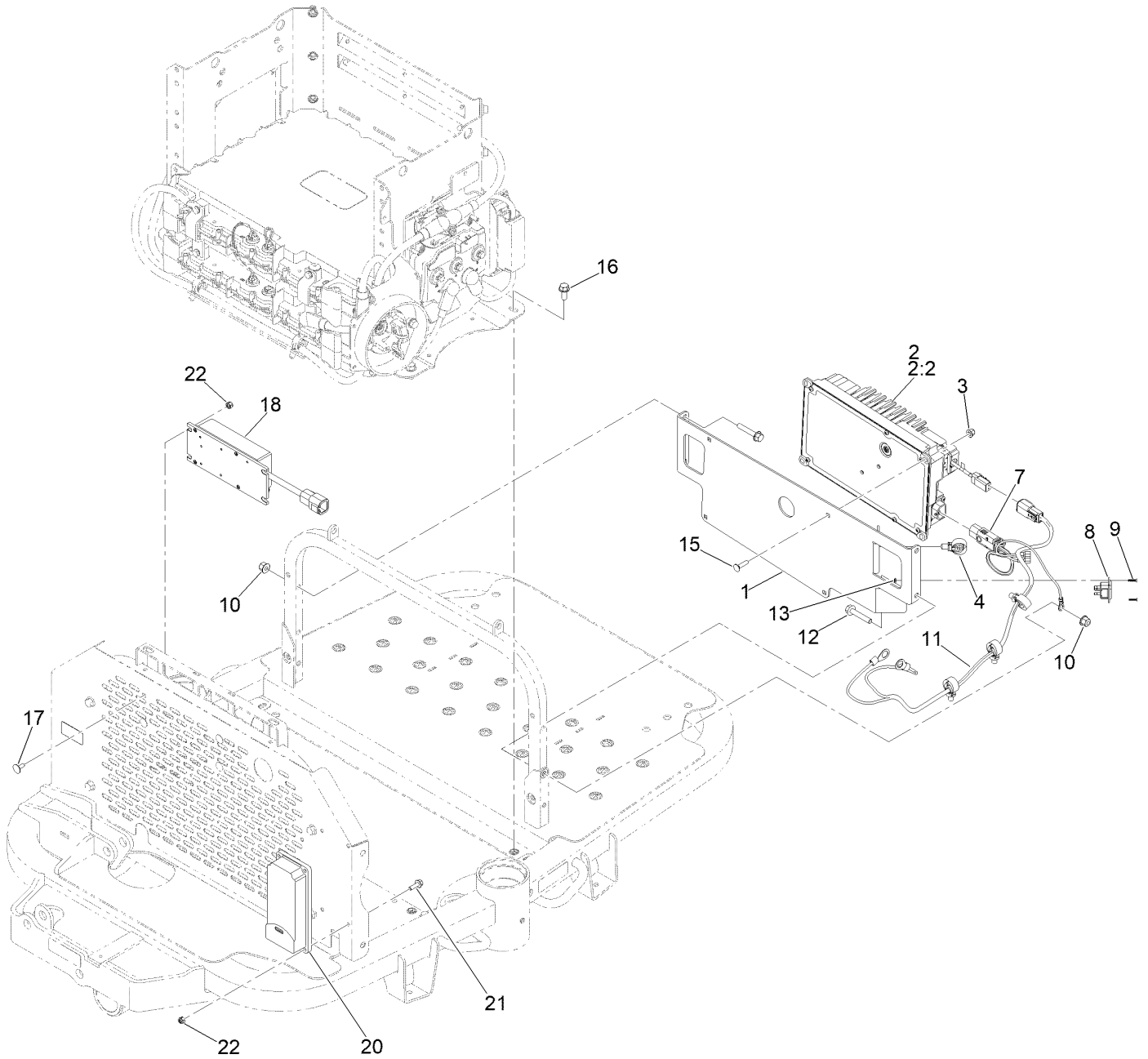
# Tire and Wheel Assembly No 142-5511



# Tire and Wheel Assembly No 142-5511 (continued)

<i>Ref.</i>	<i>Part Number</i>	<i>Qty.</i>	<i>Description</i>
1	142-6214	1	Tire
2	142-6215	1	Rim-8X5.375, Centered
3	232-27	1	Stem-Valve

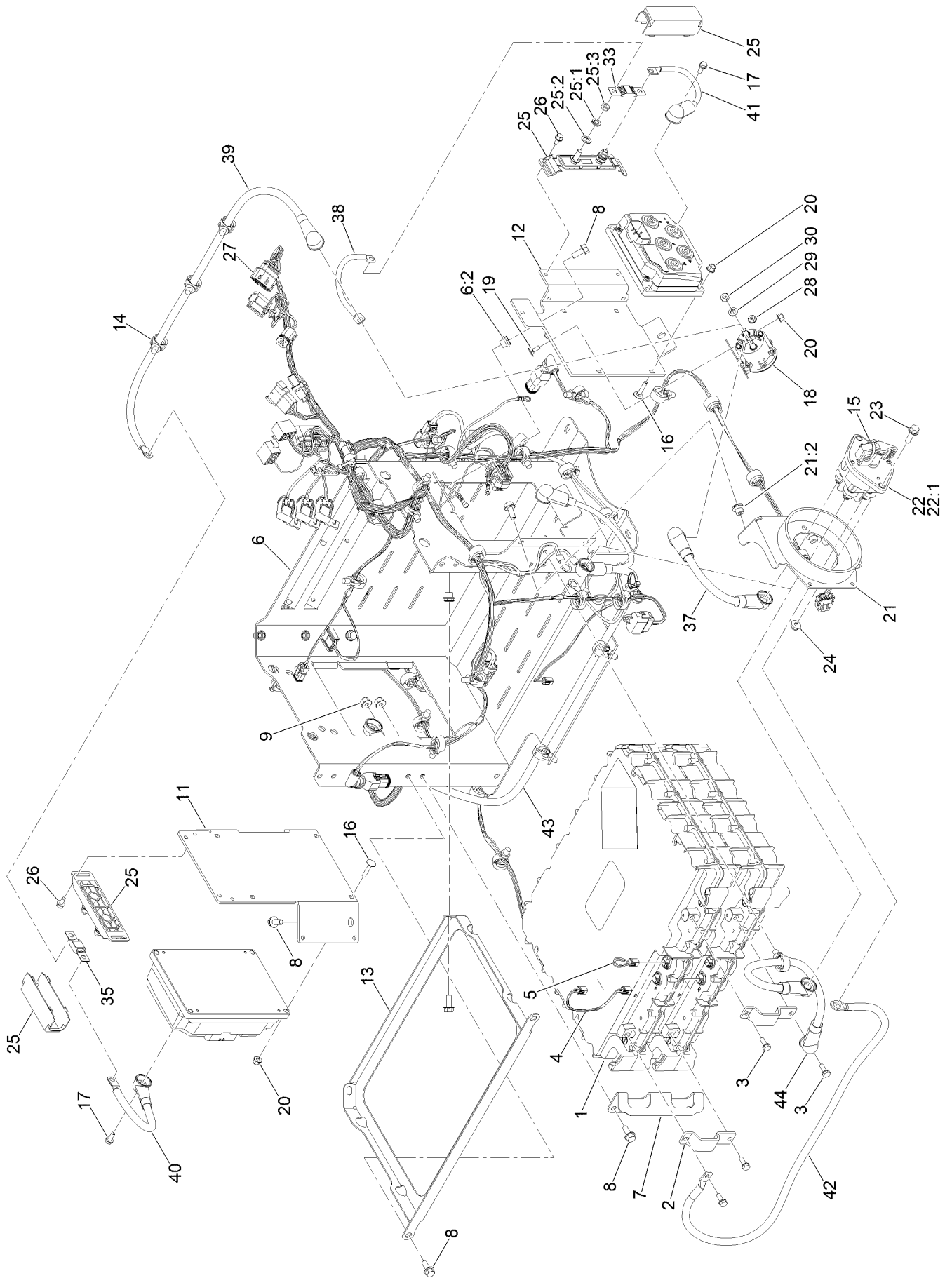
# Electrical and Battery Assembly



## Electrical and Battery Assembly (continued)

<i>Ref.</i>	<i>Part Number</i>	<i>Qty.</i>	<i>Description</i>	<i>Ref.</i>	<i>Part Number</i>	<i>Qty.</i>	<i>Description</i>
1	161-7777-03	1	Bracket-Mount, Charger	12	33104-045	4	Screw-HHF
2	145-1177	1	Charger-Onboard	13	3296-52	2	Nut-Lock, NI
2:2	147-3234	1	DC Harness Service Kit	15	09735	4	Bolt Coach
3	134-3761	4	Nut-Flange, NI	16	134-3746	4	Screw-HHF
4	32180-030	1	Clip-Tie	17	33123-016	4	Screw-CARR
7	122-4391	1	Harness-Wire, AC Charger	18	122-4326	1	Converter DC-DC
8	147-3230	1	Connector-lec	20	161-9001	1	Gateway-Telematics
9	510-0015	2	Scr-Mch	21	134-3740	4	Screw-HHF
10	134-3762	4	Nut-Flange, NI	22	09438	8	Nut-Nyloc
11	122-3785	1	Harness-Wire, Jumper				

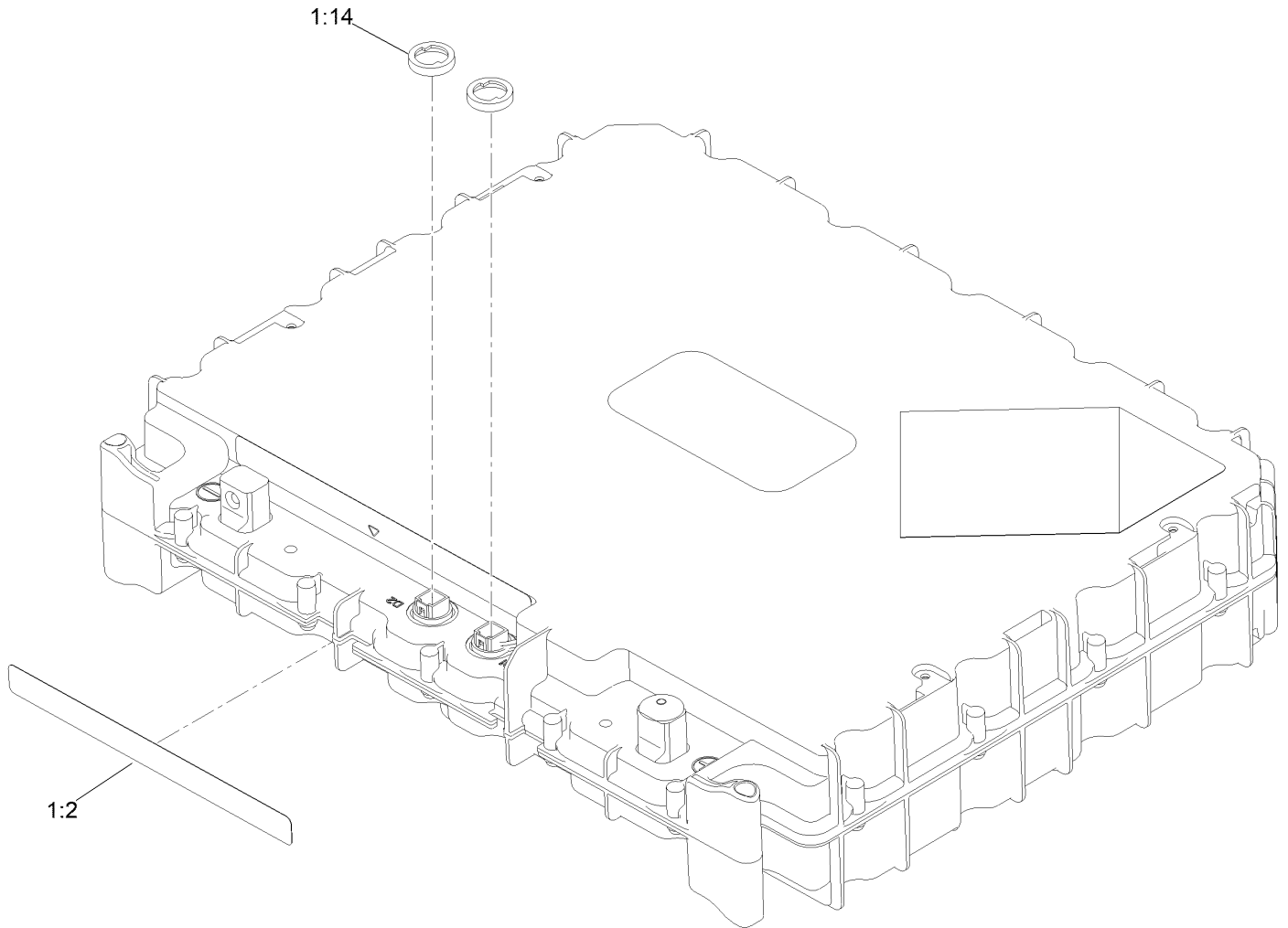
# Battery Assembly



## Battery Assembly (continued)

<i>Ref.</i>	<i>Part Number</i>	<i>Qty.</i>	<i>Description</i>	<i>Ref.</i>	<i>Part Number</i>	<i>Qty.</i>	<i>Description</i>
1	145-5320	2	Battery ASM	22	122-0603	1	Switch-Disconnect
2	147-3877	2	Bar-Bus, 400A	22:1	33006-00	1	Nut-HF
3	145-5783	4	Screw-Sems	23	3234-29	2	Screw-HHF
4	140-9565	1	Harness-Wire, Data Interface	24	119-4041	2	Nut-HF
5	122-2323	1	Harness-Wire, Can Terminator	25	161-6249	2	Holder-Fuse
6	163-8131	1	Battery Tray ASM	25:1	136-8682	8	Washer-Lock
6:2	161-7799	11	Nut-Clinch	25:2	3256-74	16	Washer-Flat
7	161-7773-03	2	Bracket-Hold, Battery	25:3	117-4059	8	Nut-Hex
8	134-3746	15	Screw-HHF	26	104-2628	4	Screw
9	134-3762	6	Nut-Flange, NI	27	122-4193	1	Harness-Wire, Main
11	161-7770-03	1	Bracket-Mount, Controller	28	32149-8	2	Nut-Keps
12	161-7771-03	1	Bracket-Mount, Controller	29	3253-4	2	Washer-Lock
13	161-7775-03	1	Hold-Battery	30	3220-2	2	Nut-Hex Jam
14	32180-030	5	Clip-Tie	33	122-2627	1	Fuse-70A
15	3290-378	1	Tie-Cable	35	122-2559	1	Fuse-100 Amp
16	33123-030	8	Screw-CARR	37	122-3402	1	Cable-Battery, Rd ASM
17	145-5782	4	Screw-Sems	38	122-3403	1	Cable-Battery, Rd ASM
18	122-1274	1	Contacto-DC, 48V	39	122-3404	1	Cable-Battery, Rd ASM
19	33123-016	2	Screw-CARR	40	122-3405	1	Cable-Battery, Rd ASM
20	134-3761	10	Nut-Flange, NI	41	122-3406	1	Cable-Battery, Rd ASM
21	163-8132	1	Service Switch Bracket ASM	42	122-3407	1	Cable-Battery, Bk ASM
21:2	161-7799	2	Nut-Clinch	43	122-3408	1	Cable-Battery, Bk ASM
				44	122-3427	1	Cable-Battery, Rd ASM

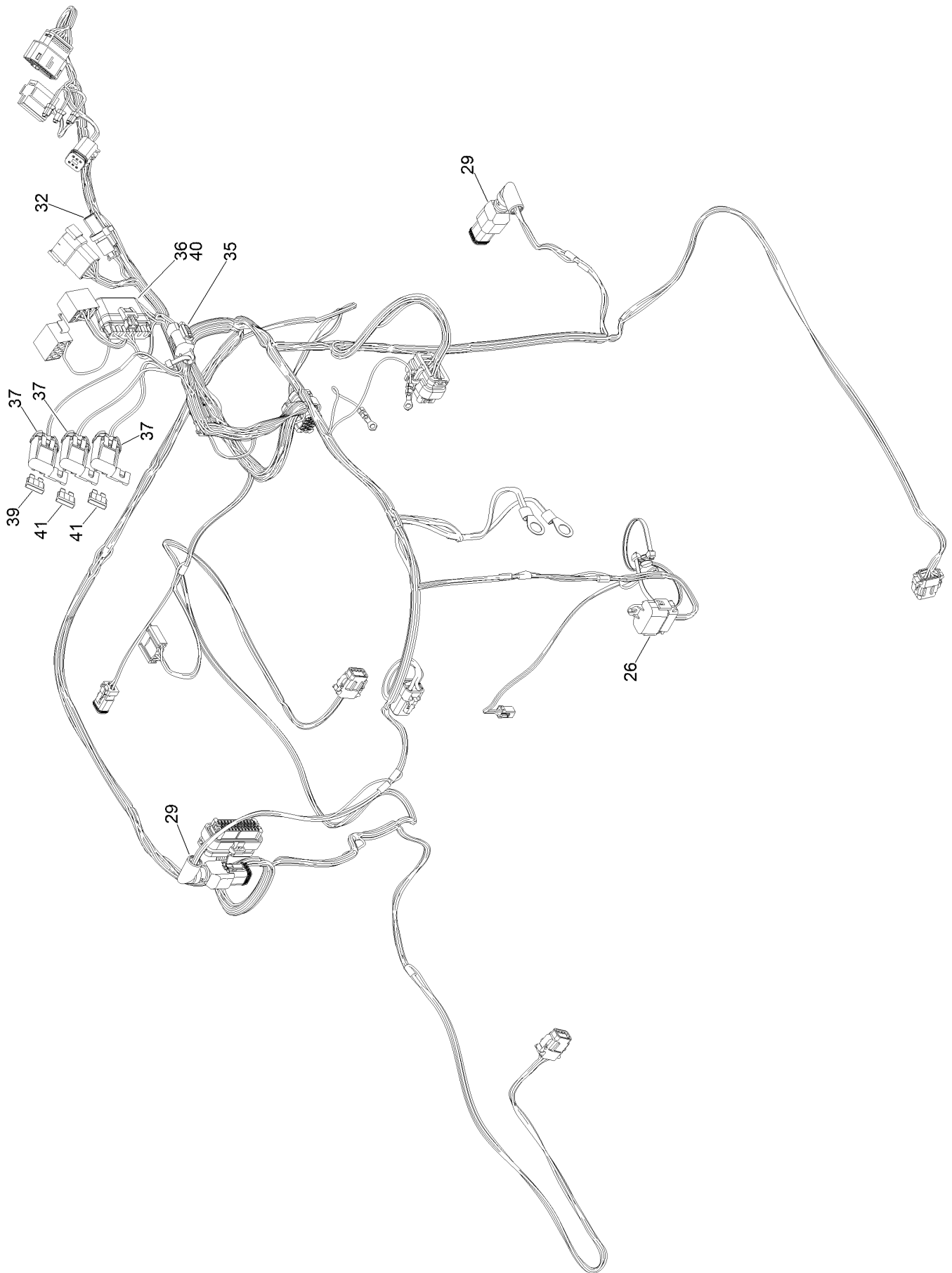
# Battery Assembly No. 145-5320



## Battery Assembly No. 145-5320 (continued)

<i>Ref.</i>	<i>Part Number</i>	<i>Qty.</i>	<i>Description</i>
1:2	145-5338	1	Decal-Warning, Battery
1:14	32180-466	2	Nut-Mounting, Jwpf Panel Lock

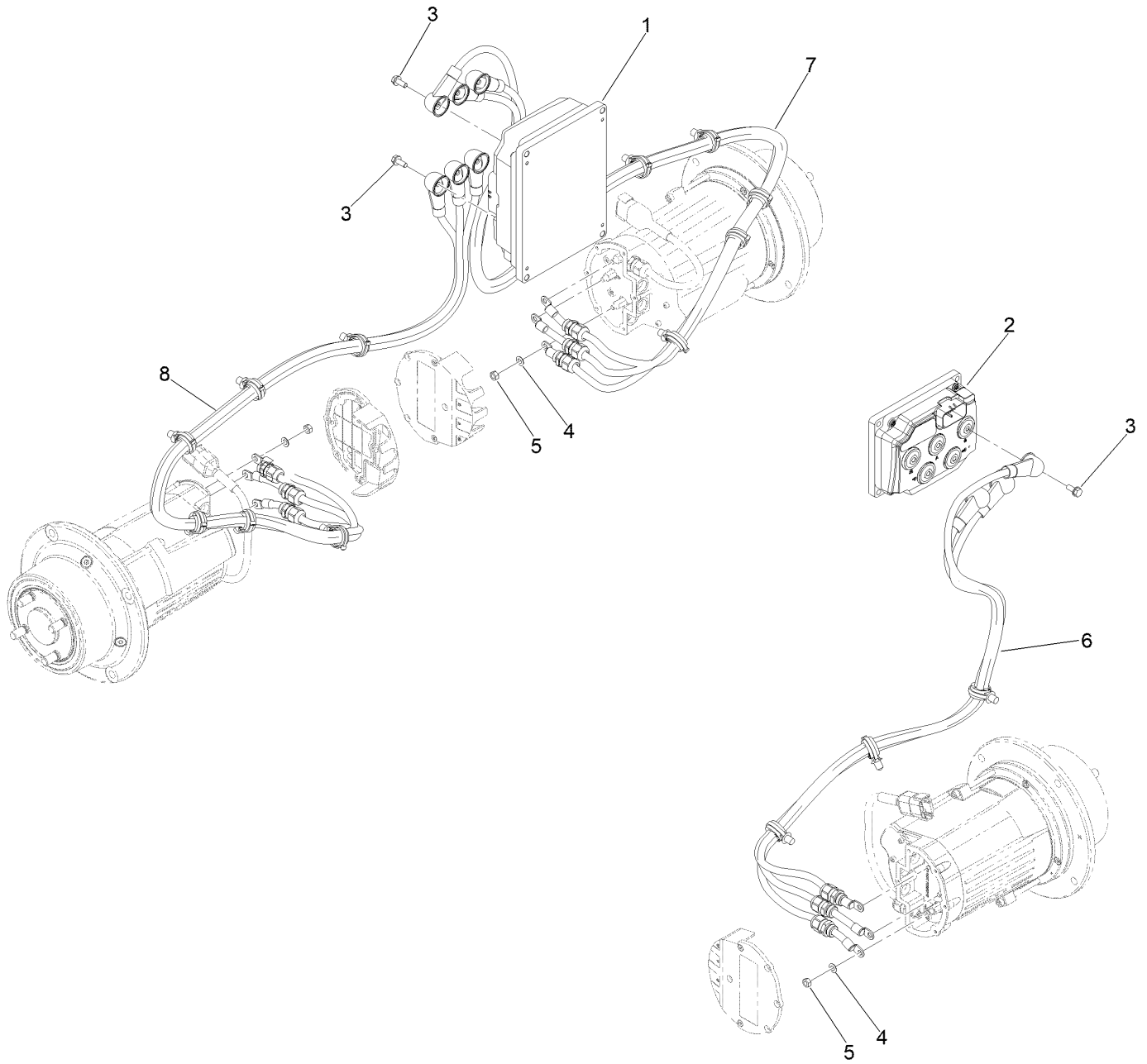
# Main Wire Harness Assembly No. 122-4193



# Main Wire Harness Assembly No. 122-4193 (continued)

<i>Ref.</i>	<i>Part Number</i>	<i>Qty.</i>	<i>Description</i>	<i>Ref.</i>	<i>Part Number</i>	<i>Qty.</i>	<i>Description</i>
26	32180-662	1	Cap-Dust, For Dtm 12 Way	37	32180-567	3	Cover-Aptiv, Modified
29	32180-459	2	Backshell-Harnessflex, Dt6	39	117-4724	1	Fuse-Blade, 10A
32	32180-282	1	Conn, Res, 120 Ohm	40	121-8861	1	Fuse-Mini Blade, 2 Amp
35	32180-089	1	Cap-Plug, 3 Way	41	117-4725	2	Fuse-Blade, 15A
36	121-8866	1	Fuse-Mini Blade, 10 Amp				

# Controller Assembly



## Controller Assembly (continued)

<i>Ref.</i>	<i>Part Number</i>	<i>Qty.</i>	<i>Description</i>	<i>Ref.</i>	<i>Part Number</i>	<i>Qty.</i>	<i>Description</i>
1	138-8984	1	Inv/Ctrlr-48V, Dual 94Arms	5	HDW21408	9	Nut-Hex
2	145-7270	1	Inv/Ctrlr-48V	6	122-4247	1	Cable-Battery Rd ASM ASM
3	145-5782	9	Screw-Sems	7	122-4248	1	Cable-Battery Rd ASM ASM
4	1-303435	9	Washer-Spring	8	122-4249	1	Cable-Battery Rd ASM ASM

# Attachments and Accessories

## For 44914 — GreensPro 1700 Greens Roller

<b>Product Name</b>	<b>Model/Part</b>
Battery Expansion Kit .....	44976
HV Synthetic Electric Motor Drive Oil.....	147-6275
Powercord-AC, Europe.....	107-0382
Powercord-AC, U.K. ....	107-0383
Powercord-AC .....	107-0384

**Notes:**

**Notes:**

**Notes:**



**Count on it.**