



## Electric Starter Kit

### ProLine Mid–Size Mower

Part No. 104–8580

## Parts Catalog

---

### Ordering Replacement Parts

To order replacement parts, please supply: the part number, the quantity, and the description of each part desired.

### Understanding Reference Numbers

Each identified part in an illustration has a reference number. The reference number for a part also appears in the parts list, along with other information about the part.

This catalog uses two special reference number formats, one to indicate parts in a service assembly and another to indicate the quantity of a given part in an illustration.

### Service Assembly Reference Numbers

Parts in service assemblies have reference numbers in the form **a:b**. The **a** represents the reference number of the entire service assembly and the **b** represents a sequential number unique to each part within the service assembly.

For example, a wheel assembly might be identified by reference number **6**, the tire by **6:1**, the valve by **6:2**, and the wheel by **6:3**. When you order the assembly identified by reference number **6**, you receive all parts identified by reference numbers **6:1**, **6:2**, and **6:3**. However, you may also order any part individually.

Reference numbers of this type appear in illustrations and in part lists.

### Reference Numbers Indicating Quantity

In an illustration, if a reference number indicates more than one part, the reference number has the form **nX y**. The **n** represents the quantity of the part, the **X** is the multiplication symbol, and the **y** represents the reference number.

For example, in an illustration, the reference number **2X 37** means that two of the parts identified by reference number **37** are indicated.

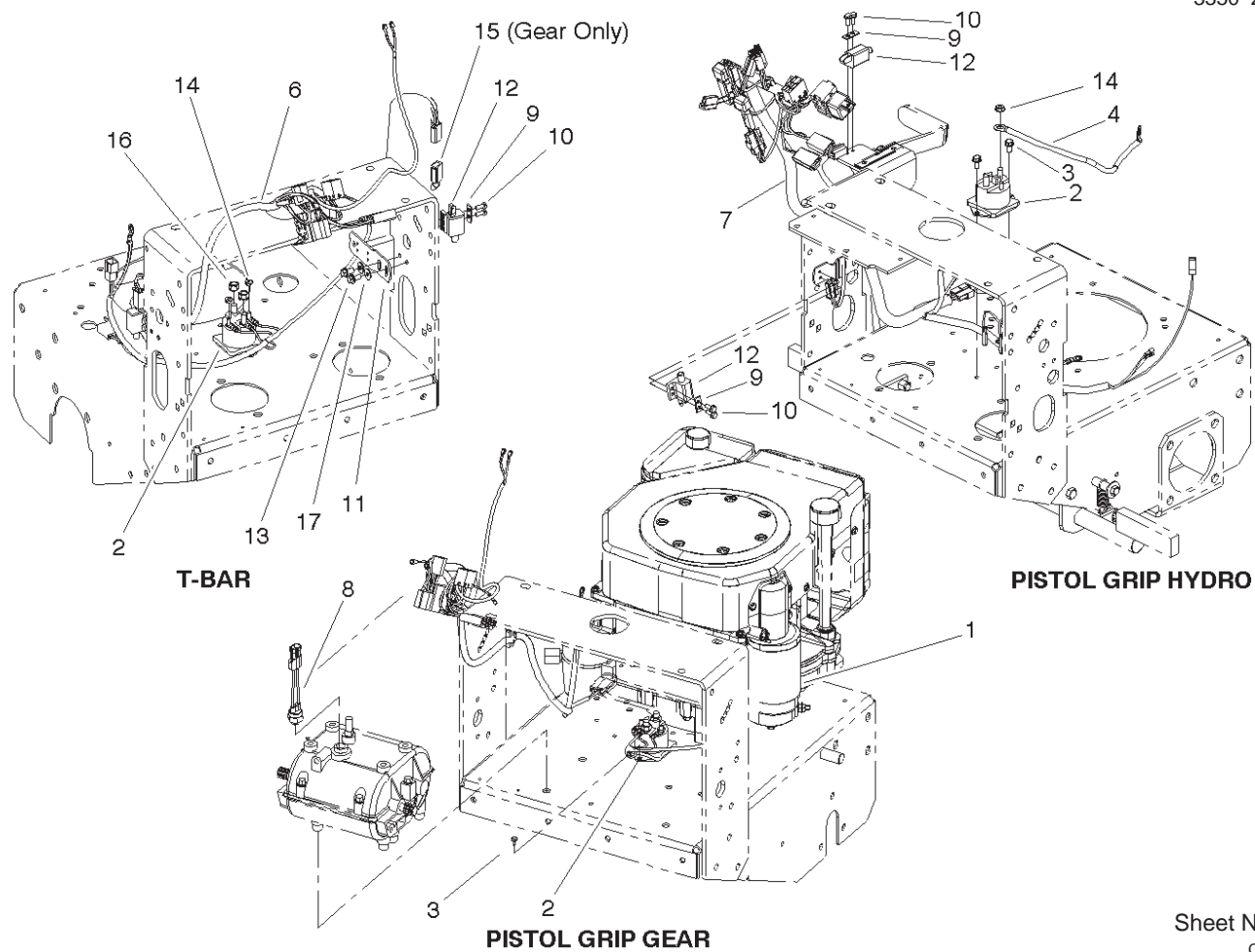
Contents

Description	Page	Description	Page
Starter and Solenoid Assembly .....	3	Battery Assembly .....	5
Ignition Switch Assembly .....	4		

Part Description Abbreviations

Part descriptions in this catalog may include the following abbreviations.

Abbreviation	Meaning	Abbreviation	Meaning
AR .....	as required	HYD .....	hydraulic
ASM .....	assembly	INC .....	incorporated
CARR .....	carriage	LH .....	left hand
DEG .....	degrees	NI .....	nylon insert
FH .....	flat head	PPH .....	Phillips pan head
GA .....	gauge	PTH .....	Phillips truss head
HF .....	hex flange	PTO .....	power take off
HH .....	hex head	RH .....	right hand
HHF .....	hex head flange	SFH .....	slotted fillister head
HLH .....	hex lag head	SHH .....	slotted hex head
HJ .....	hex jam	SQH .....	square head
HOC .....	height-of-cut	SHWH .....	slotted hex washer head
HS .....	hex socket	SPH .....	slotted pan head
HSBH .....	hex socket button head	SRH .....	slotted round head
HSFH .....	hex socket flat head	STD .....	standard
HSH .....	hex socket head	TAP .....	self tapping
HWH .....	hex washer head	TTH .....	Torx truss head
HWHTF .....	hex washer head thread forming	WH .....	wing head

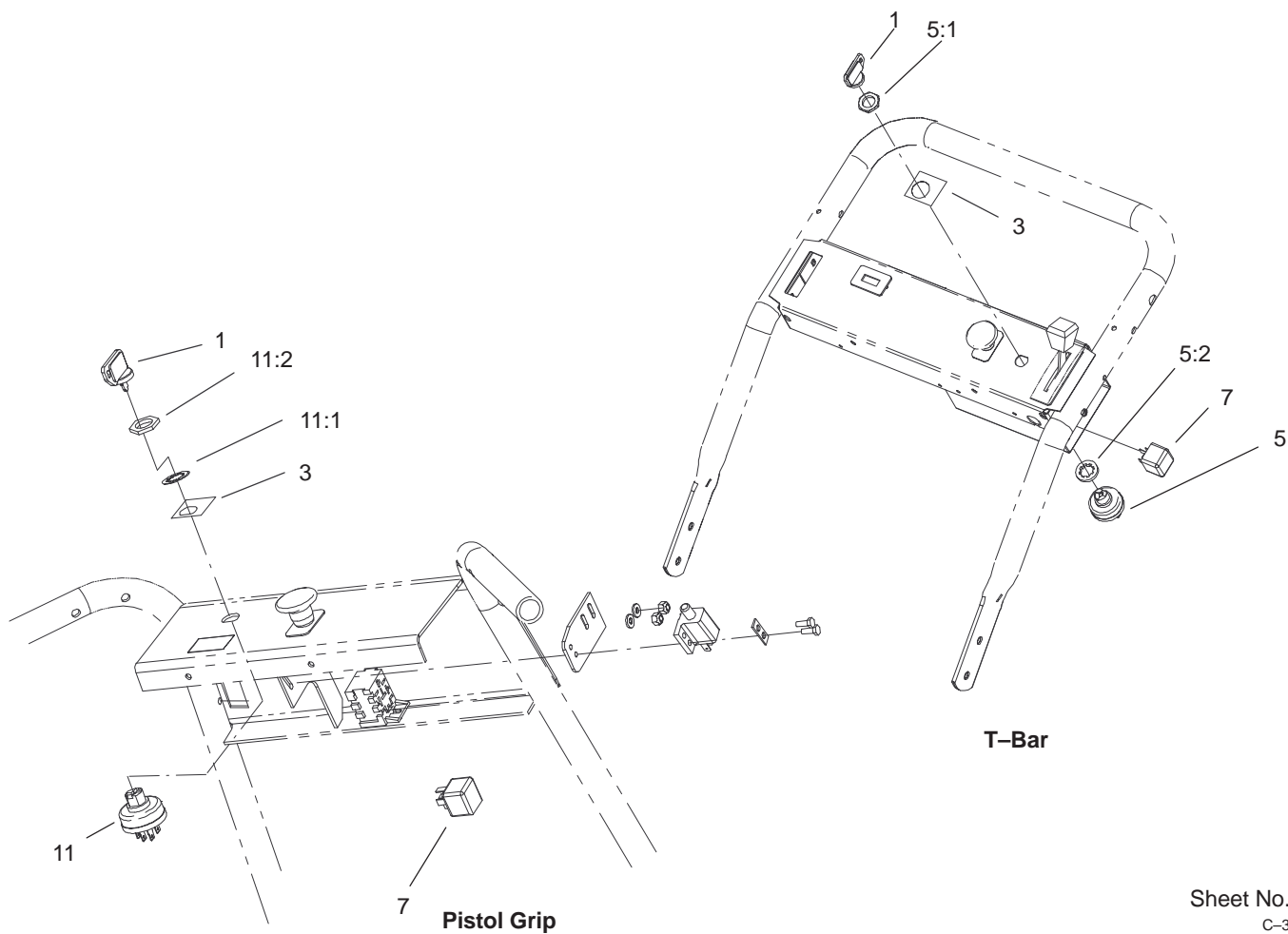


Sheet No.: 1  
C-3020

## Starter and Solenoid Assembly

Ref. No.	Part No.	Qty.	Description
1	77-5070	1	Starter ASM
2	28-4210	1	Solenoid
3	12-3270	2	Screw
4	28-3891	1	Wire-Solenoid/Starter
6	105-2687	1	Harness-Wire (T-Bar)
7	106-0875	1	Harness-Wire
8	72-4310	1	Switch-Ball
9	82-4570	2	Plate-Switch
10	32144-1	4	Screw-Taptite
11	82-4580-03	2	Bracket-Neutral
12	65-7410	2	Switch-Pole, Single
13	32144-4	4	Screw-HWH
14	32149-8	2	Nut-Keps
15	105-2688	2	Wire-Jumper ASM
16	32149-1	2	Nut
17	3256-1	4	Washer-Flat

Ref. No.	Part No.	Qty.	Description

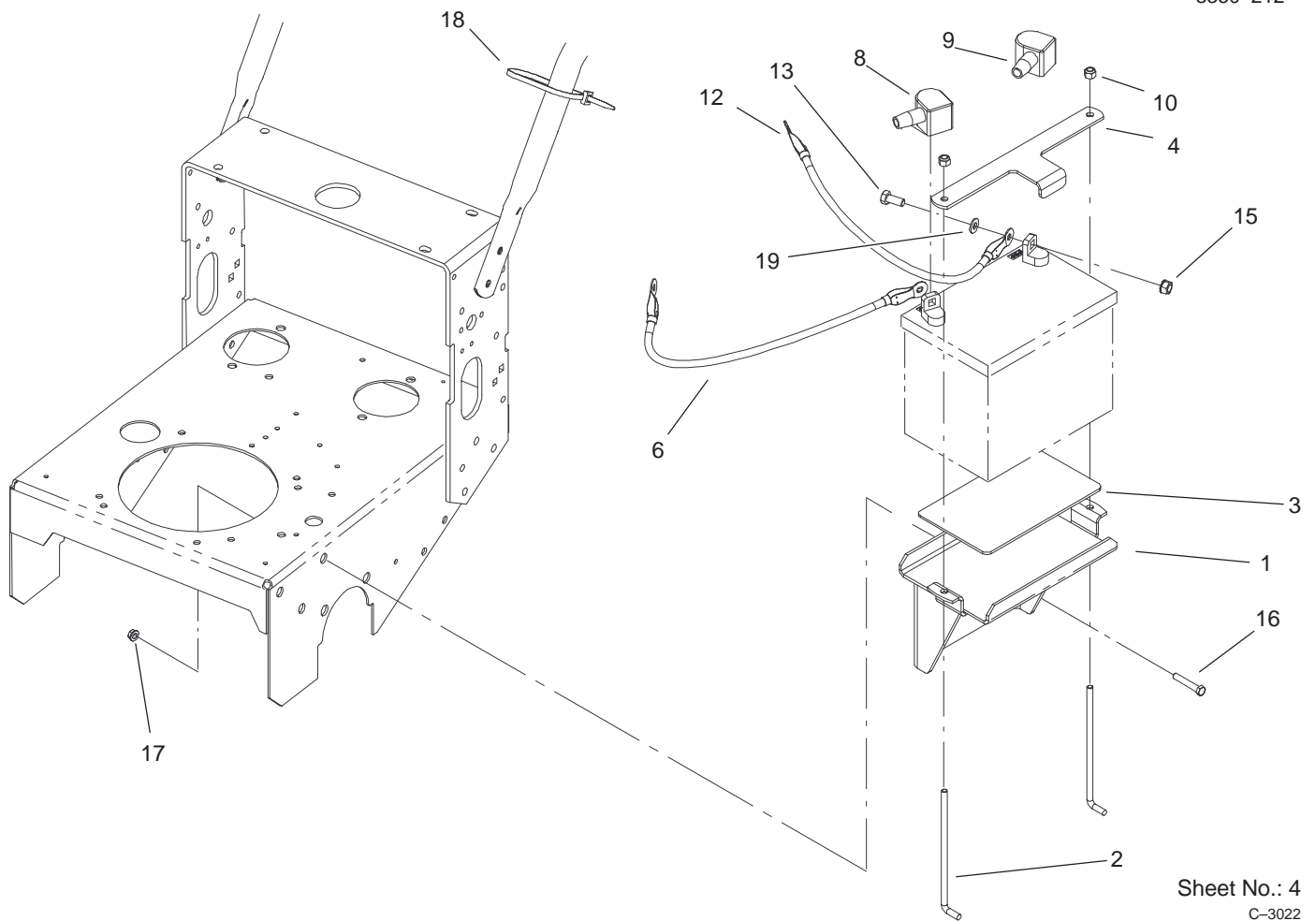


Sheet No.: 2  
C-3021

## Ignition Switch Assembly

Ref. No.	Part No.	Qty.	Description
1	63-8360	1	Key-Ignition
3	106-0909	1	Decal-Electric Start
5	116338	1	Key Switch ASM
5:1	101884	1	Nut
5:2	9201604	1	Washer-Lock, Internal
7	98-7249	1	Relay
11	88-9830	1	Key Switch ASM
11:1	3254-5	1	Washer-Tooth
11:2	218-461	1	Nut-HH

Ref. No.	Part No.	Qty.	Description



## Battery Assembly

Ref. No.	Part No.	Qty.	Description
1	105-0804-01	1	Battery Plate ASM
2	104-8567	2	Holdown-Battery
3	62-4300	2	Anti-Skid Pad
4	104-8568-03	1	Plate-Hold Down, Battery
6	105-0836	1	Cable-Battery, Black
8	77-0980	1	Boot-Terminal, Black
9	77-0981	1	Boot-Terminal, Red
10	3296-42	2	Nut-Lock, NI
12	100-6457	1	Cable-Battery, Red
13	322-3	2	Screw-HH
15	32149-1	2	Nut
16	3234-22	2	Screw-HHF
17	32128-23	2	Nut-HF
18	3290-378	4	Tie-Cable
19	3256-2	2	Washer-Flat

Ref. No.	Part No.	Qty.	Description

## Maintenance Record

[illegible]

## Maintenance Record

[illegible]

