



Stump Grinder Shield

Compact Tool Carrier

Model No. 22429—Serial No. 415090382 and Up

Addendum

Note: Determine the left and right sides of the machine from the normal operating position.

Installation

Loose Parts

Use the chart below to verify that all parts have been shipped.

Procedure	Description	QTY
Preparing the Machine	No parts required.	-
Selecting the Correct Shield Bracket	No parts required.	-
Installing the Shield Brackets	Right shield bracket	1
	Left shield bracket	1
	Bolt (1/4 x 3/4 inch)	4
	Locknut (1/4 inch)	4
Assembling the Operator Shield	Shield support	2
	Shield	1
	Bolt (1/4 x 1-1/2 inches)	8
	Washer	8
	Locknut (1/4 inch)	8
Replacing the Quick-Attach Assembly	Quick-attach assembly	1



Preparing the Machine

1. Park the machine on a level surface.
2. Engage the parking brake.
3. Lower the loader arms.
4. Shut off the engine and remove the key.

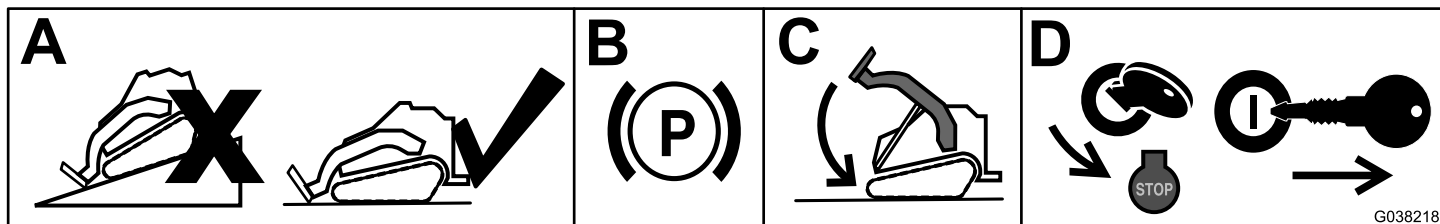


Figure 1

Selecting the Correct Shield Bracket

Note: Ensure that the correct bracket is selected for your machine.

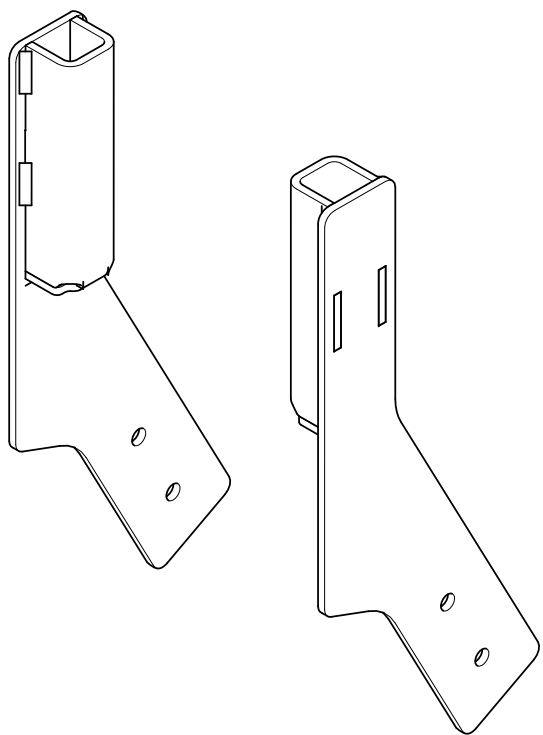


Figure 2
TX 700 Shield Brackets

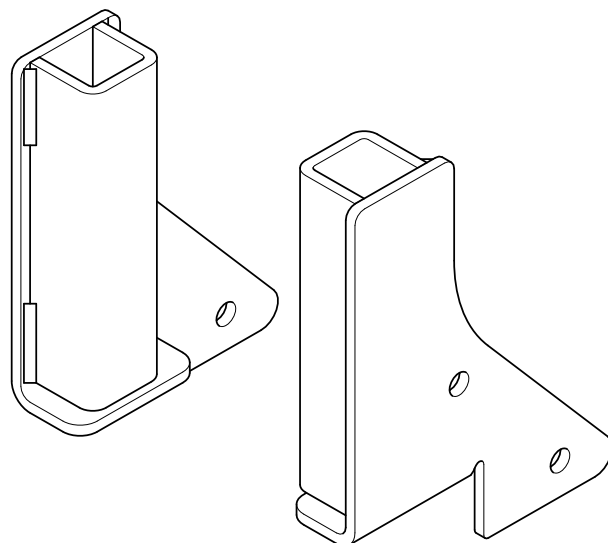
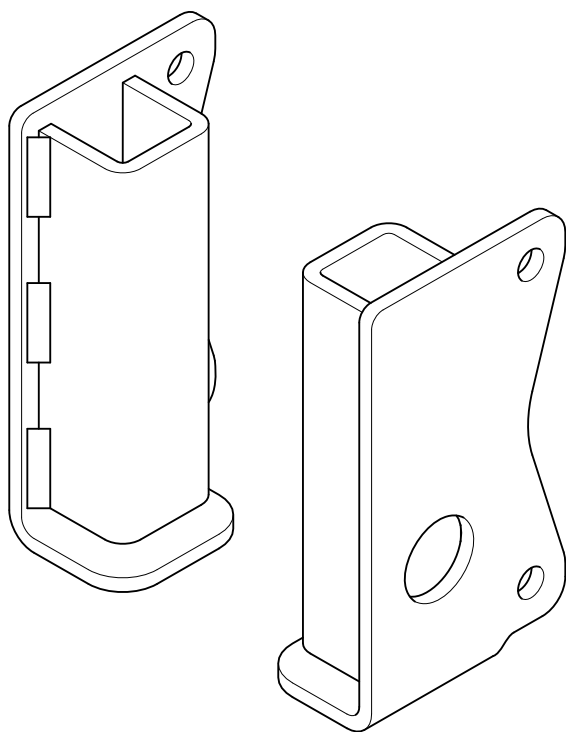


Figure 3
TX 1000 Shield Brackets



g509389

Figure 4
TX 1000 Turbo Shield Brackets

Installing the Shield Brackets

Parts needed for this procedure:

1	Right shield bracket
1	Left shield bracket
4	Bolt (1/4 x 3/4 inch)
4	Locknut (1/4 inch)

1. Measure in from the edges of the frame as illustrated in [Figure 5](#) and mark the locations of the holes for mounting the shield bracket on both sides of the machine.

⚠ WARNING

Using a drill without proper eye protection may allow debris to enter the eye, causing injury.

When drilling, always wear eye protection.

Note: If the holes exist, skip to step 3.

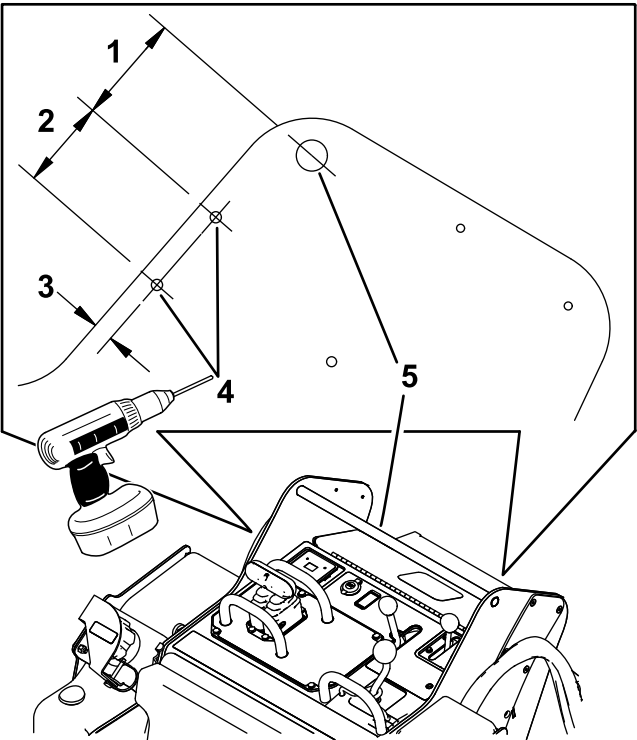


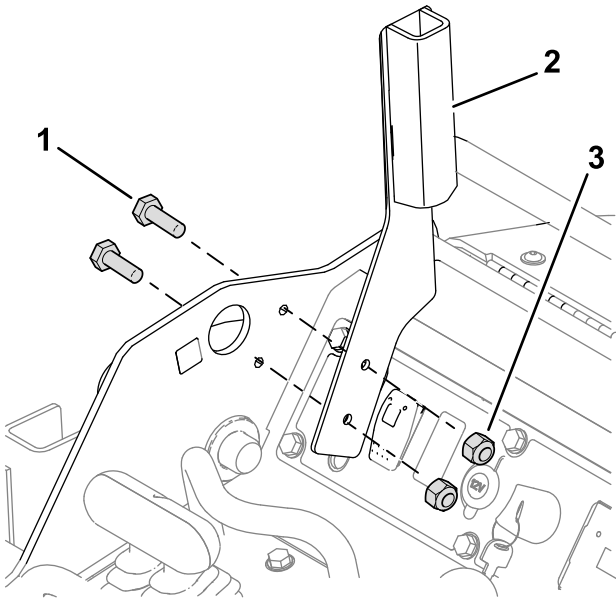
Figure 5

g511283

- | | |
|--------------------------|-------------------|
| 1. 7.0 cm (2-3/4 inches) | 4. Holes to drill |
| 2. 5.7 cm (2-1/4 inches) | 5. Reference bar |
| 3. 1.3 cm (1/2 inch) | |

2. Drill a hole (9/32 inch) through the frame at each marked location.
3. Using the bracket selected in [Selecting the Correct Shield Bracket \(page 2\)](#), install the left

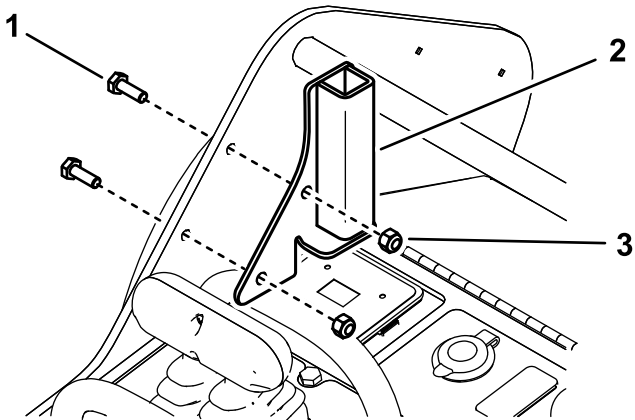
shield bracket on the left frame using 2 bolts (1/4 x 3/4 inch) and 2 locknuts (1/4 inch) as shown in [Figure 6](#) and [Figure 7](#).



g461111

Figure 6
TX 700

- | | |
|--------------------------|-----------------------|
| 1. Bolt (1/4 x 3/4 inch) | 3. Locknut (1/4 inch) |
| 2. Left shield bracket | |



g202825

Figure 7
TX 1000

- | | |
|--------------------------|-----------------------|
| 1. Bolt (1/4 x 3/4 inch) | 3. Locknut (1/4 inch) |
| 2. Left shield bracket | |

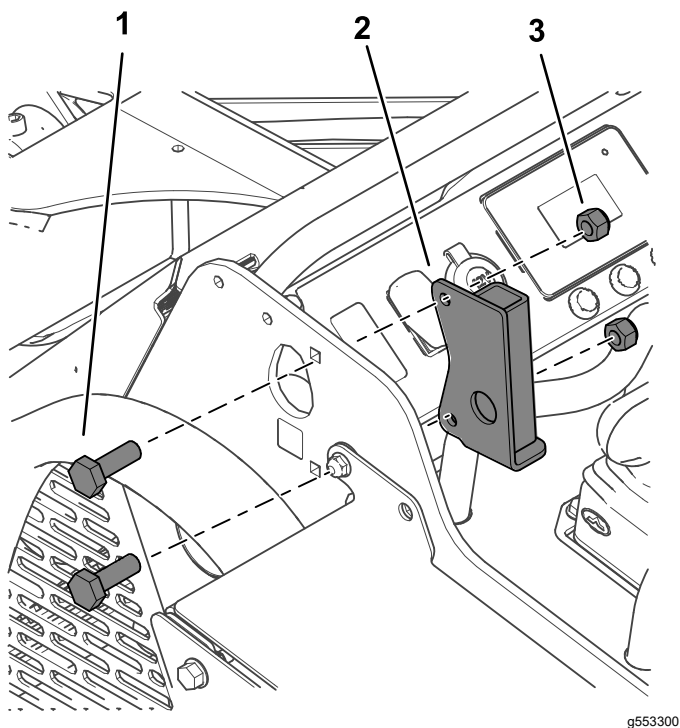


Figure 8

1. Bolts (1/4 x 3/4 inch)
 2. Left shield bracket
 3. Locknut (1/4 inch)
-
4. Install the right shield bracket on the right frame using 2 bolts (1/4 x 3/4 inch) and 2 locknuts (1/4 inch).

Assembling the Operator Shield

Parts needed for this procedure:

2	Shield support
1	Shield
8	Bolt (1/4 x 1-1/2 inches)
8	Washer
8	Locknut (1/4 inch)

1. Assemble the shield and flexible skirt to the shield supports, as shown in the appropriate following figure below using 8 bolts (1/4 x 1-1/2 inches), 8 washers, and 8 locknuts (1/4 inch).

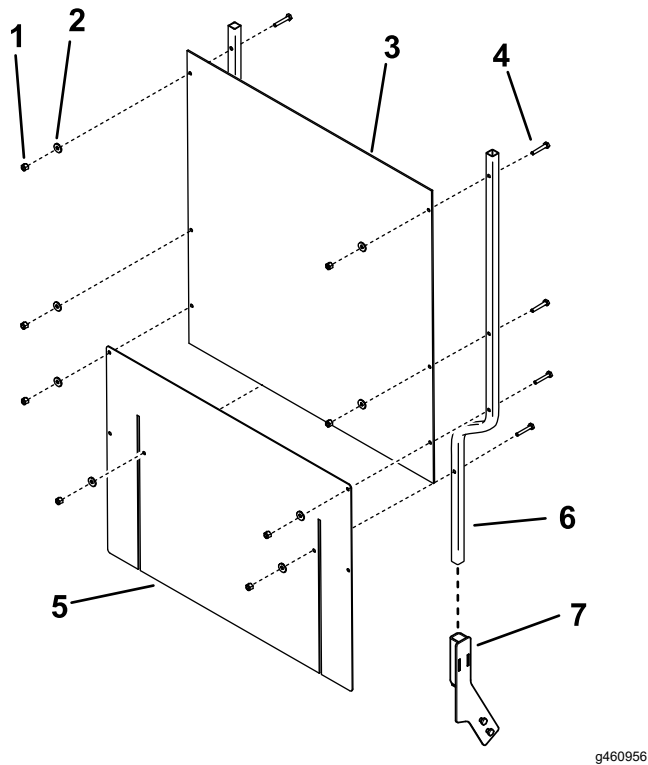


Figure 9
TX 700

- | | |
|----------------|------------------------------|
| 1. Locknut (8) | 5. Skirt |
| 2. Washer (8) | 6. Shield support (2) |
| 3. Shield | 7. TX 700 shield bracket (2) |
| 4. Bolt (8) | |

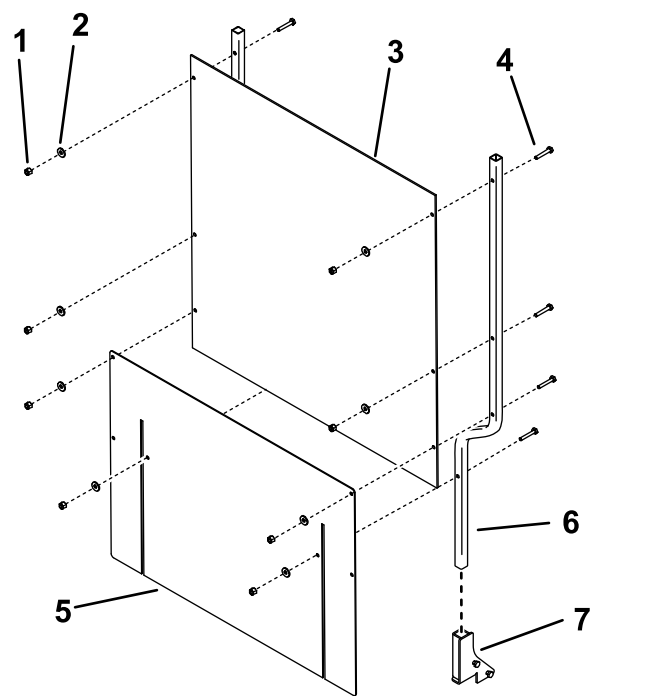
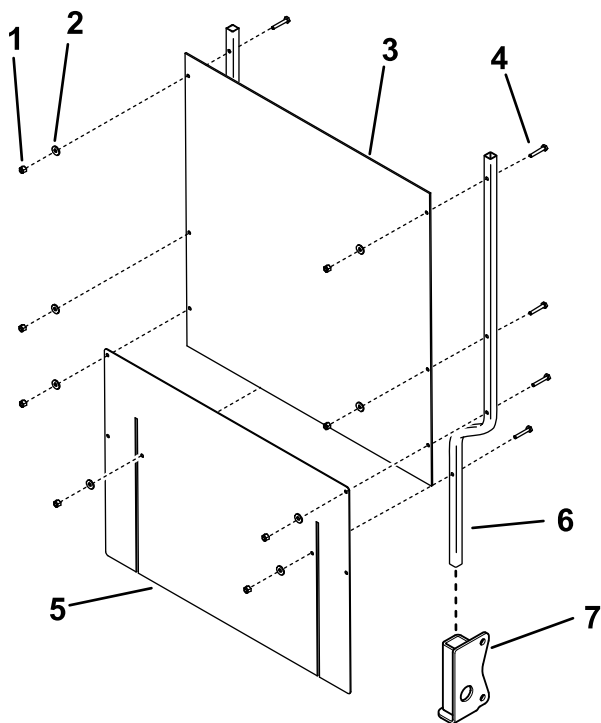


Figure 10
TX 1000

- | | |
|----------------|-------------------------------|
| 1. Locknut (8) | 5. Skirt |
| 2. Washer (8) | 6. Shield support (2) |
| 3. Shield | 7. TX 1000 shield bracket (2) |
| 4. Bolt (8) | |



g509388

Figure 11
TX 1000 Turbo

- | | |
|----------------|-------------------------------------|
| 1. Locknut (8) | 5. Skirt |
| 2. Washer (8) | 6. Shield support (2) |
| 3. Shield | 7. TX 1000 Turbo shield bracket (2) |
| 4. Bolt (8) | |

-
2. Slide the shield supports into the pockets in the shield brackets on the traction unit.

Note: The skirt should drape over the engine or hood.

Replacing the Quick-Attach Assembly

Parts needed for this procedure:

1	Quick-attach assembly
---	-----------------------

1. Lay the stump grinder flat on the floor.
2. Place wood blocks under the body of the stump grinder so that the quick-attach plate is off the floor.
3. Remove the large bolt (1 x 2-1/4 inches), washer, nut (1 inch), 2 small bolts (1/2 x 1-1/2 inches), and 2 nuts (1/2 inch) securing the quick-attach assembly to the stump grinder (Figure 12). Remove the assembly.

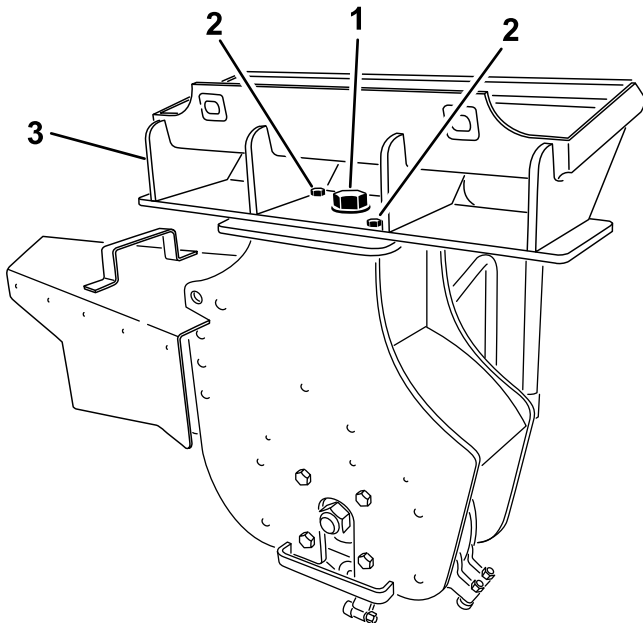


Figure 12

1. Large bolt (1 x 2-1/4 inches), washer, and nut (1 inch)
2. Small bolt (1/2 x 1-1/2 inches) and nut (1/2 inch)
3. Quick-attach assembly

4. Install the new quick-attach assembly to the stump grinder using the previously removed hardware.

Note: The new quick-attach assembly has a wider hose loop.

5. Torque the large bolt (1 x 2-1/4 inches) to 406 N·m (300 ft-lb), and torque the small bolts (1/2 x 1-1/2 inches) to 101 N·m (75 ft-lb).
6. Route the hoses through the hose loop (Figure 13).

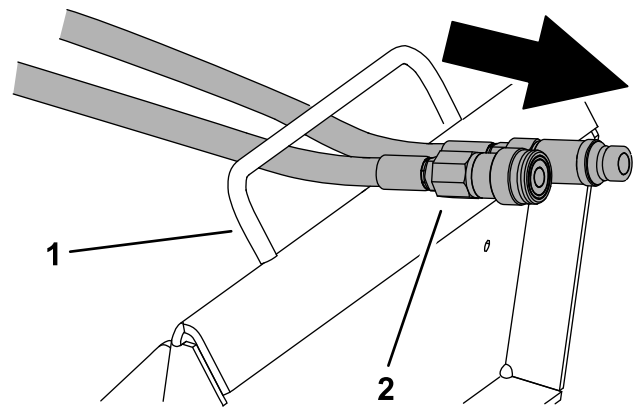


Figure 13

1. Hose loop
2. Hoses