



# Debris Blower

## Groundsmaster<sup>®</sup> 200 Series

Model No. 30823—230000001 and Up

## Parts Catalog

### Ordering Replacement Parts

To order replacement parts, please supply: the part number, the quantity, and the description of each part desired.

### Understanding Reference Numbers

Each identified part in an illustration has a reference number. The reference number for a part also appears in the parts list, along with other information about the part.

This catalog uses two special reference number formats, one to indicate parts in a service assembly and another to indicate the quantity of a given part in an illustration.

### Service Assembly Reference Numbers

Parts in service assemblies have reference numbers in the form **a:b**. The **a** represents the reference number of the entire service assembly and the **b** represents a sequential number unique to each part within the service assembly.

For example, a wheel assembly might be identified by reference number **6**, the tire by **6:1**, the valve by **6:2**, and the wheel by **6:3**. When you order the assembly identified by reference number **6**, you receive all parts identified by reference numbers **6:1**, **6:2**, and **6:3**. However, you may also order any part individually.

Reference numbers of this type appear in illustrations and in part lists.

### Reference Numbers Indicating Quantity

In an illustration, if a reference number indicates more than one part, the reference number has the form **nX y**. The **n** represents the quantity of the part, the **X** is the multiplication symbol, and the **y** represents the reference number.

For example, in an illustration, the reference number **2X 37** means that two of the parts identified by reference number **37** are indicated.

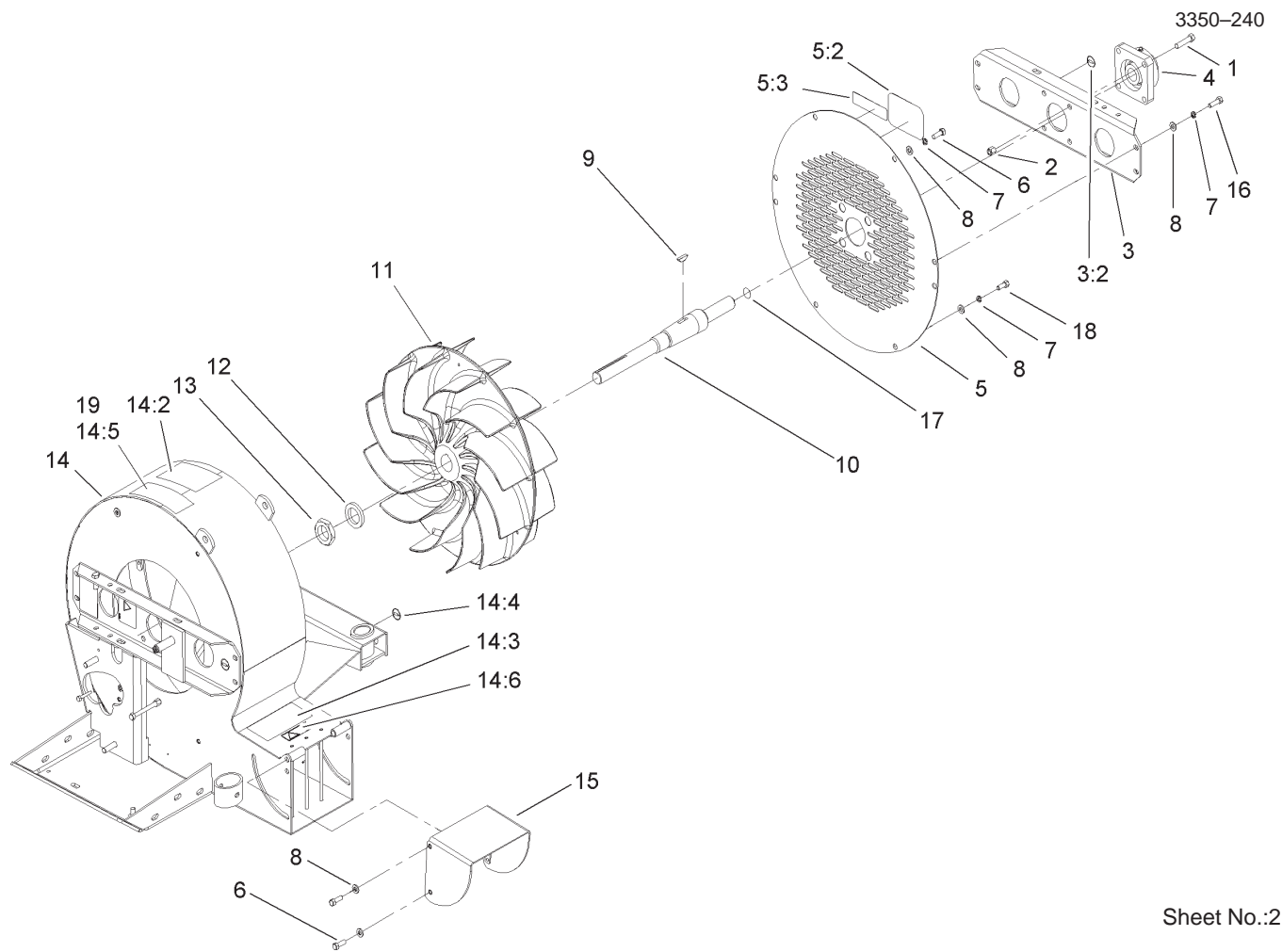
## Contents

<b>Description</b>	<b>Page</b>	<b>Description</b>	<b>Page</b>
Fan Assembly .....	3	Drive Shaft Assembly No. 104–0272 .....	6
Lift Arm and Idler Assembly .....	4	Castor Wheel Assembly .....	7
Fan Drive Assembly .....	5		

## Part Description Abbreviations

Part descriptions in this catalog may include the following abbreviations.

<b>Abbreviation</b>	<b>Meaning</b>	<b>Abbreviation</b>	<b>Meaning</b>
AR .....	as required	HYD .....	hydraulic
ASM .....	assembly	INC .....	incorporated
CARR .....	carriage	LH .....	left hand
DEG .....	degrees	NI .....	nylon insert
FH .....	flat head	PPH .....	Phillips pan head
GA .....	gauge	PTH .....	Phillips truss head
HF .....	hex flange	PTO .....	power take off
HH .....	hex head	RH .....	right hand
HHF .....	hex head flange	SFH .....	slotted fillister head
HLH .....	hex lag head	SHH .....	slotted hex head
HJ .....	hex jam	SQH .....	square head
HOC .....	height-of-cut	SHWH .....	slotted hex washer head
HS .....	hex socket	SPH .....	slotted pan head
HSBH .....	hex socket button head	SRH .....	slotted round head
HSFH .....	hex socket flat head	STD .....	standard
HSH .....	hex socket head	TAP .....	self tapping
HWH .....	hex washer head	TTH .....	Torx truss head
HWHTF .....	hex washer head thread forming	WH .....	wing head

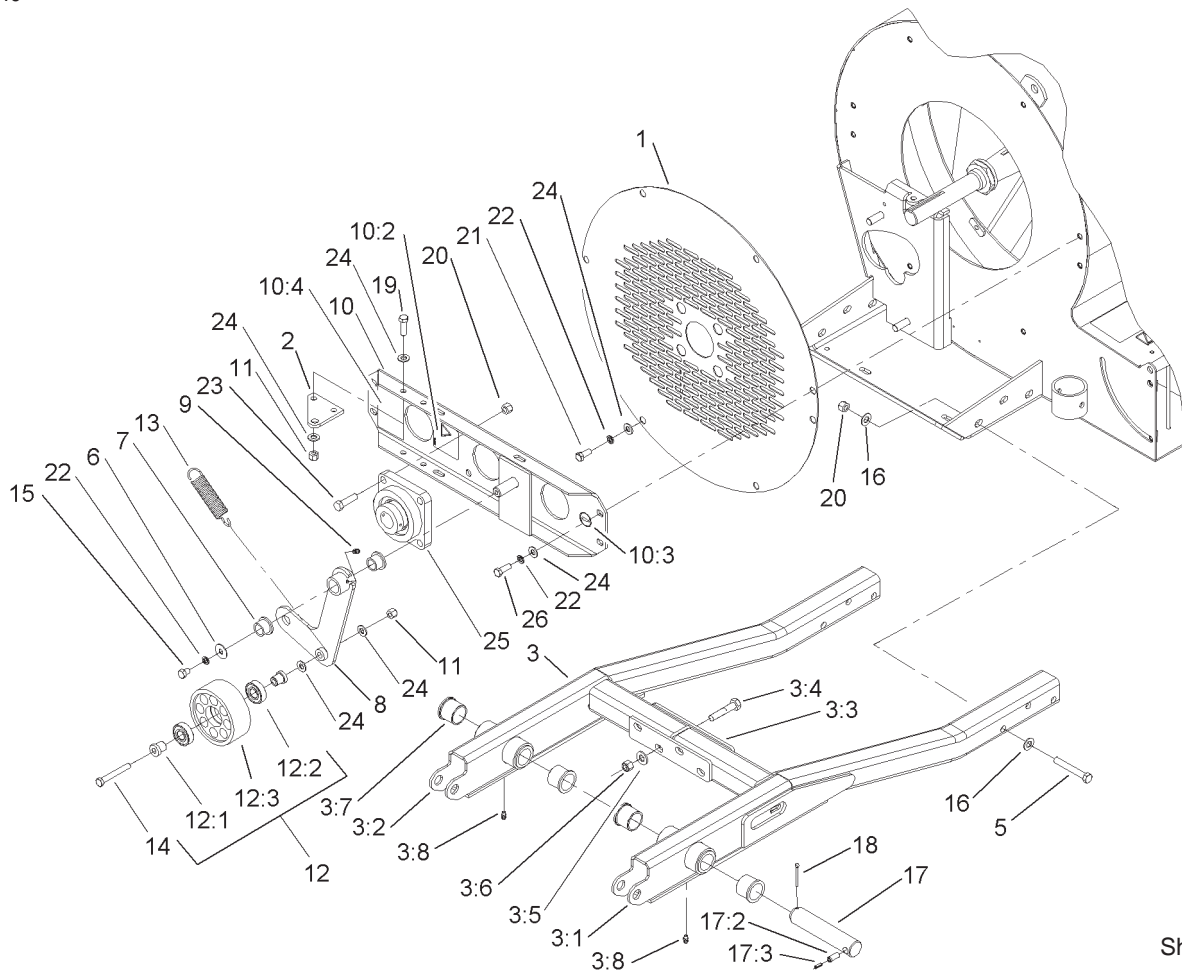


Sheet No.:2

## Fan Assembly

Ref. No.	Part No.	Qty.	Description
1	324-6	4	Screw-HH
2	3296-48	4	Nut-Lock, NI
3	99-4481	1	Plate-Bearing, Front
3:2	58-6520	1	Decal-Grease
4	94-8987	1	Bearing
5	99-4479	1	Screen Front
5:2	67-1300	1	Decal
5:3	93-9083	1	Decal-Caution
6	323-5	6	Screw-HH
7	3253-21	8	Washer-Lock
8	3256-24	12	Washer-Flat
9	3257-42	1	Key-Woodruff
10	100-4070	1	Shaft-Fan
11	94-8950	1	Fan
12	77-0950	1	Washer-Castor
13	3218-17	1	Nut-Jam
14	104-0268	1	Housing ASM
14:2	98-3110	1	Decal-Caution
14:3	93-6674	1	Decal-Warning
14:4	58-6520	2	Decal-Grease
14:5	105-0707	1	Decal-Ansi
14:6	105-0708	1	Decal-Danger
15	98-1140-01	1	Chute-Fan
16	323-6	4	Screw-HH
17	98-3111	1	Decal-Rotating

Ref. No.	Part No.	Qty.	Description
18	323-4	2	Screw-HH
19	105-0698	1	Decal-CE

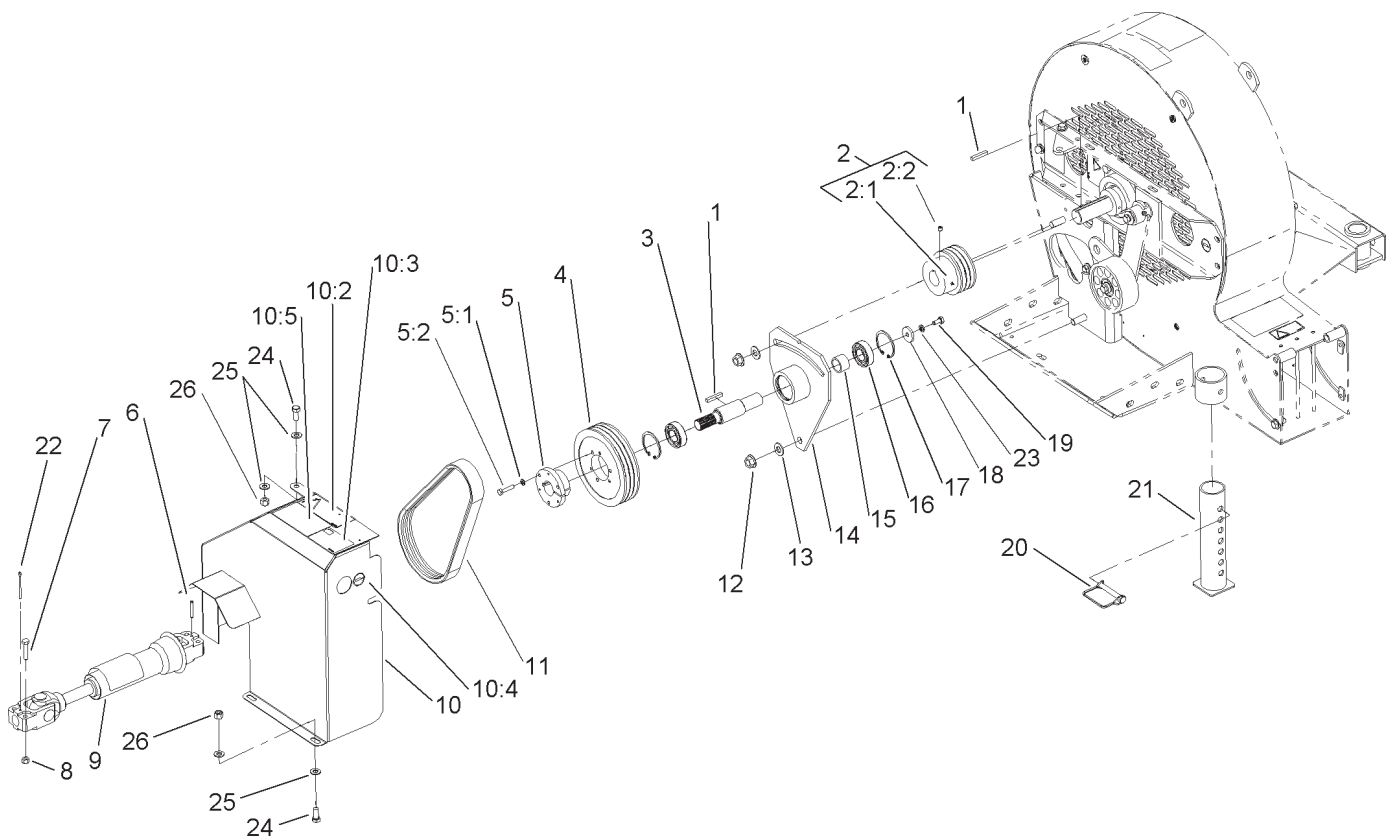


Sheet No.:3

## Lift Arm and Idler Assembly

Ref. No.	Part No.	Qty.	Description
1	98-5877-01	1	Screen
2	100-4092-01	1	Mount-Spring
3	100-4055	1	Frame Mount ASM
3:1	105-0576-01	1	Arm-Lift, RH
3:2	105-0575-01	1	Arm-Lift, LH
3:3	105-0577-01	2	Plate-Cross
3:4	324-13	4	Screw-HH
3:5	3256-25	8	Washer-Flat
3:6	3296-48	4	Nut-Lock, NI
3:7	256-268	4	Bushing
3:8	302-5	2	Fitting-Grease
5	324-12	6	Screw-HH
6	3256-35	1	Washer-Flat
7	256-244	2	Bushing
8	100-4094	1	Idler Arm ASM
9	302-5	1	Fitting-Grease
10	104-0270	1	Mount-Bearing
10:2	99-4486	1	Decal-Warning
10:3	58-6520	1	Decal-Grease
10:4	105-0709	1	Decal-Warning
11	3296-39	3	Nut-Lock, NI
12	92-0625	1	Flat Pulley ASM
12:1	100-2587	2	Spacer-Bearing
12:2	38-7820	2	Bearing-Ball
12:3	84-0920	1	Pulley-Flat
13	104-0265	1	Spring-Extension

Ref. No.	Part No.	Qty.	Description
14	323-14	1	Screw-HH
15	323-2	1	Screw-HH
16	3256-25	12	Washer-Flat
17	98-2330	2	Pivot Pin ASM
17:2	32121-67	1	Pin-Roll
17:3	32121-61	1	Pin-Roll
18	3272-19	2	Pin-Cotter
19	323-7	2	Screw-HH
20	3296-48	10	Nut-Lock, NI
21	323-5	4	Screw-HH
22	3253-21	9	Washer-Lock
23	324-6	4	Screw-HH
24	3256-24	16	Washer-Flat
25	94-8987	1	Bearing
26	323-6	4	Screw-HH



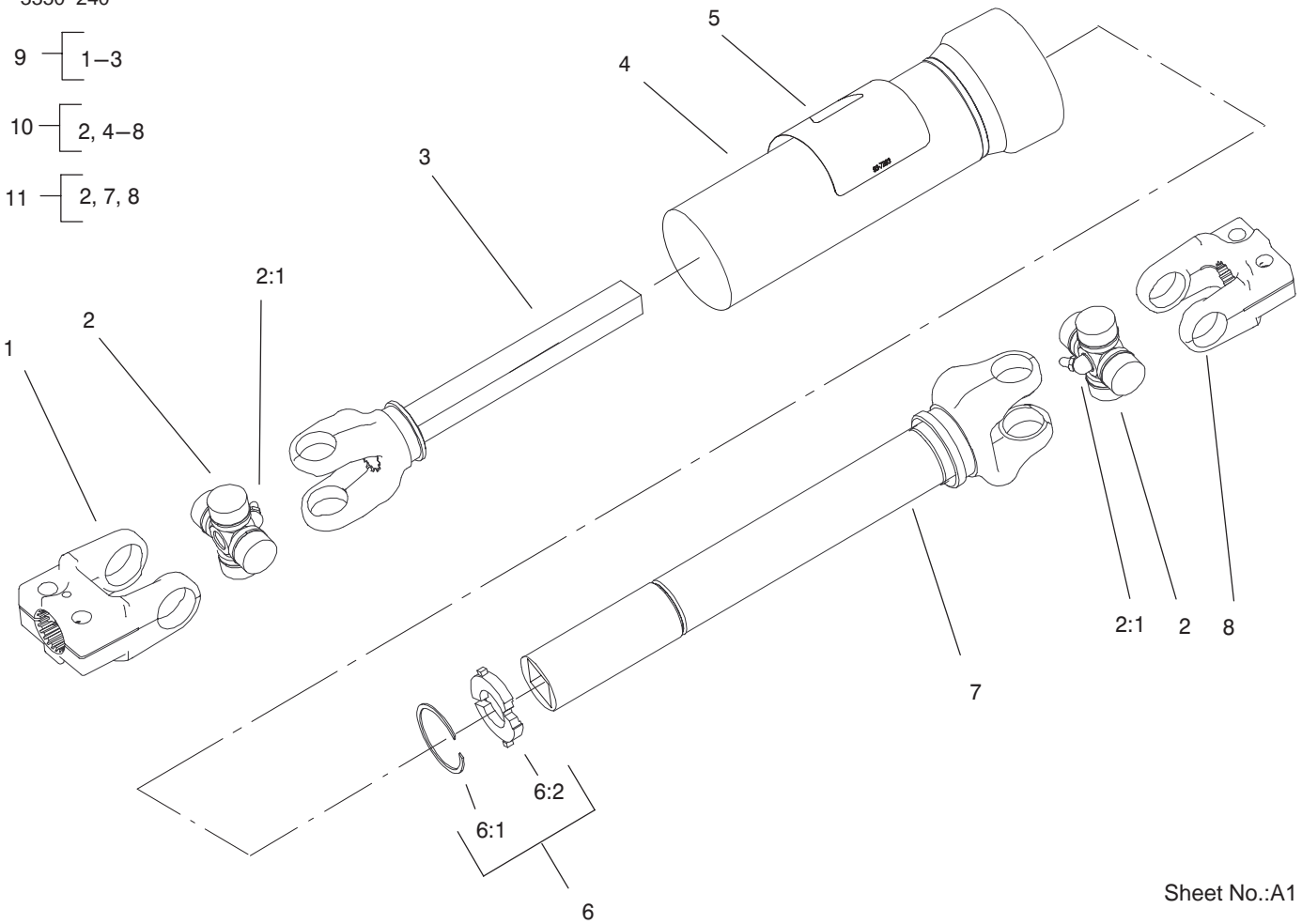
Sheet No.:4

## Fan Drive Assembly

Ref. No.	Part No.	Qty.	Description
1	67-7490	2	Key-Square
2	99-4518	1	Pulley-Clutch, Overrunning
2:1	3246-15	2	Screw-Set
2:2	302-2	2	Fitting-Grease
3	94-8973	1	Shaft
4	100-4041	1	Pulley
5	95-0882	1	Hub
5:1	3253-18	3	Washer-Lock/Sp
5:2	32104-96	3	Screw-HH
6	32121-34	2	Pin-Roll
7	322-7	4	Screw-HH
8	3296-29	4	Nut-Lock, NI
9	104-0272	1	Drive Shaft ASM
10	104-0269	1	Belt Cover ASM
10:2	98-3113	1	Decal-Caution
10:3	99-4487	1	Decal-Grease
10:4	58-6520	1	Decal-Grease
10:5	105-0709	1	Decal-Warning
11	100-4039	1	V-Belt
12	32128-23	2	Nut-HF
13	3256-26	2	Washer-Flat
14	100-4076-01	1	Tensioner ASM
15	94-8972	1	Spacer-Bearing
16	94-8978	2	Bearing
17	32120-8	2	Ring-Snap

Ref. No.	Part No.	Qty.	Description
18	71-5320	1	Washer-Support, Engine
19	33114-020	1	Screw-HH
20	93-4696	1	Pin-Snapper
21	100-4097-01	1	Stand ASM
22	3272-15	1	Pin-Cotter
23	3253-4	1	Washer-Lock
24	323-5	3	Screw-HH
25	3256-24	6	Washer-Flat
26	3296-39	3	Nut-Lock, NI

3350-240



Sheet No.:A1

## Drive Shaft Assembly No. 104-0272

Ref. No.	Part No.	Qty.	Description
1	104-1239	1	Yoke
2	54-9180	2	U-Joint Kit
2:1	62-3820	1	Fitting-Grease
3	104-1235	1	Yoke & Shaft
4	104-1237	1	Guard-Inner
5	93-7283	1	Decal-Danger
6	93-9958	1	Nylon Repair Kit
☆6:1		1	Ring-Retaining
☆6:2		1	Bushing-Nylon
7	104-1238	1	Sleeve-Tube, Yoke
8	54-9040	1	Yoke-End
9	104-1233	1	Joint & Shaft Half ASM
10	104-1234	1	Joint & Tube Half ASM W/Guard
11	104-0324	1	Joint & Tube Half ASM

Ref. No.	Part No.	Qty.	Description

☆ Not serviced separately



