



**Debris Blower**  
**Groundsmaster® 300 Series**  
Model No. 30855-23000001 and Up

## Parts Catalog

### Ordering Replacement Parts

To order replacement parts, please supply: the part number, the quantity, and the description of each part desired.

### Understanding Reference Numbers

Each identified part in an illustration has a reference number. The reference number for a part also appears in the parts list, along with other information about the part.

This catalog uses two special reference number formats, one to indicate parts in a service assembly and another to indicate the quantity of a given part in an illustration.

### Service Assembly Reference Numbers

Parts in service assemblies have reference numbers in the form **a:b**. The **a** represents the reference number of the entire service assembly and the **b** represents a sequential number unique to each part within the service assembly.

For example, a wheel assembly might be identified by reference number **6**, the tire by **6:1**, the valve by **6:2**, and the wheel by **6:3**. When you order the assembly identified by reference number **6**, you receive all parts identified by reference numbers **6:1**, **6:2**, and **6:3**. However, you may also order any part individually.

Reference numbers of this type appear in illustrations and in part lists.

### Reference Numbers Indicating Quantity

In an illustration, if a reference number indicates more than one part, the reference number has the form **nX y**. The **n** represents the quantity of the part, the **X** is the multiplication symbol, and the **y** represents the reference number.

For example, in an illustration, the reference number **2X 37** means that two of the parts identified by reference number **37** are indicated.

## Contents

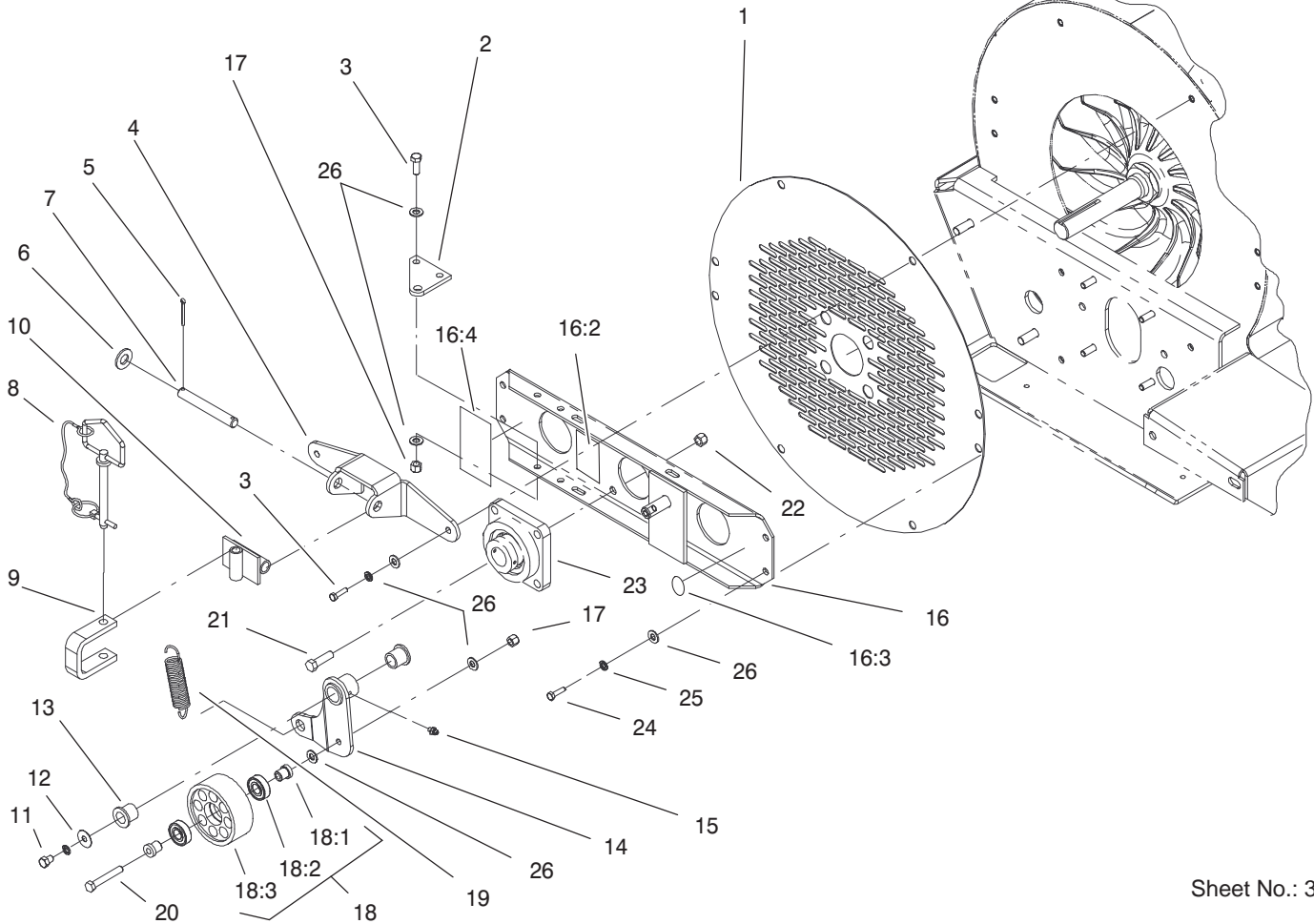
<b>Description</b>	<b>Page</b>	<b>Description</b>	<b>Page</b>
Blower and Fan Assembly .....	3	Drive Shaft Assembly No. 104–0264 .....	6
Bearing and Screen Assembly .....	4	Castor Assembly .....	7
Drive Shaft and Belt Assembly .....	5		

## Part Description Abbreviations

Part descriptions in this catalog may include the following abbreviations.

<b>Abbreviation</b>	<b>Meaning</b>	<b>Abbreviation</b>	<b>Meaning</b>
AR .....	as required	INC .....	incorporated
ASM .....	assembly	LH .....	left hand
CARR .....	carriage	NI .....	nylon insert
DEG .....	degrees	PPH .....	Phillips pan head
FH .....	flat head	PTH .....	Phillips truss head
GA .....	gauge	PTO .....	power take off
HF .....	hex flange	RH .....	right hand
HH .....	hex head	SFH .....	slotted fillister head
HHF .....	hex head flange	SHH .....	slotted hex head
HLH .....	hex lag head	SQH .....	square head
HJ .....	hex jam	SHWH .....	slotted hex washer head
HOC .....	height-of-cut	SPH .....	slotted pan head
HS .....	hex socket	SRH .....	slotted round head
HSBH .....	hex socket button head	STD .....	standard
HSFH .....	hex socket flat head	TAP .....	self tapping
HSH .....	hex socket head	TTH .....	Torx truss head
HWH .....	hex washer head	WH .....	wing head
HWHTF .....	hex washer head thread forming		



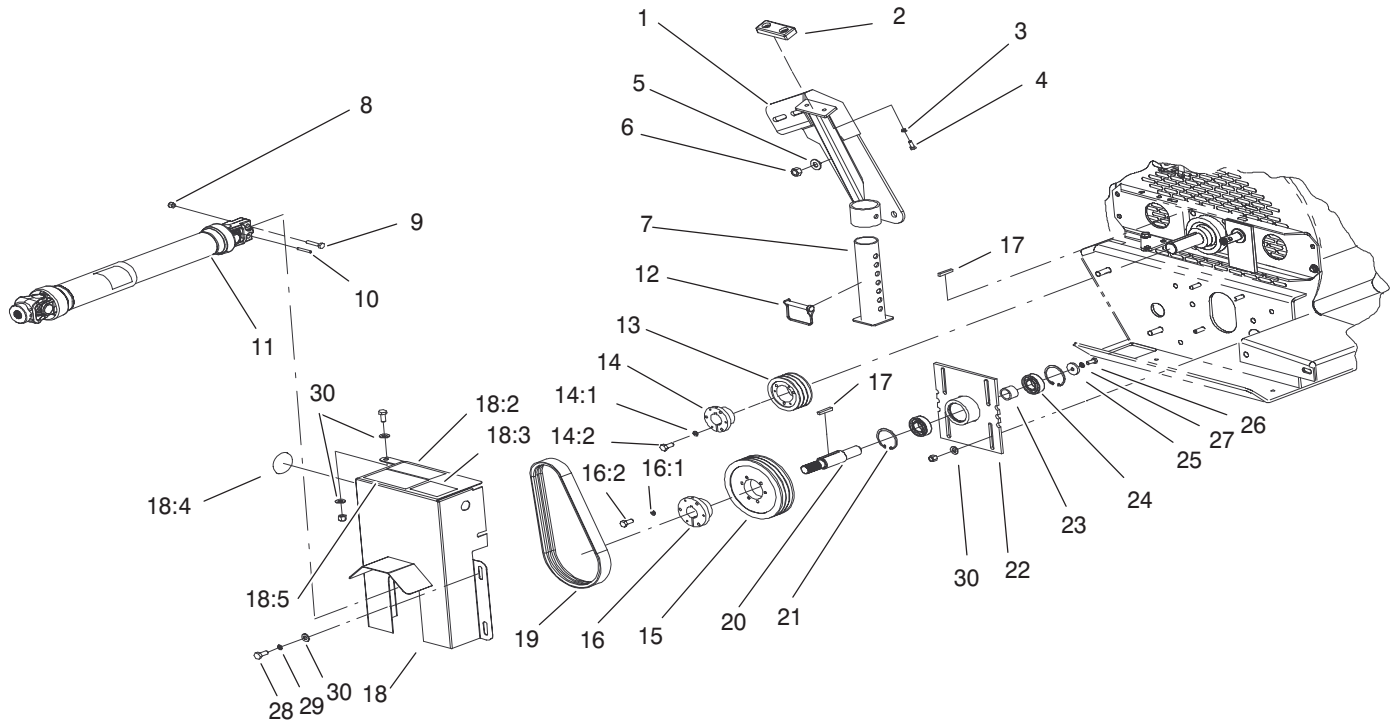


Sheet No.: 3

## Bearing and Screen Assembly

Ref. No.	Part No.	Qty.	Description
1	98-5877-01	1	Screen
2	100-4092-01	1	Mount-Spring
3	323-7	4	Screw-HH
4	100-4046-01	1	Mount-Pin
5	3272-18	2	Pin-Cotter
6	3256-27	2	Washer-Flat
7	100-4045	1	Hinge-Rod
8	99-8441	1	Pin
9	99-6531	1	Bracket-Lift Arm
10	99-6530	1	Bracket-Lift
11	323-2	1	Screw-HH
12	3256-35	1	Washer-Flat
13	256-244	2	Bushing
14	100-4093	1	Idler Arm ASM
15	302-5	3	Fitting-Grease
16	104-0270	1	Mount-Bearing
16:2	99-4486	1	Decal-Warning
16:3	58-6520	1	Decal-Grease
16:4	105-0709	1	Decal-Warning
17	3296-39	8	Nut-Lock, NI
18	92-0625	1	Flat Pulley ASM
18:1	100-2587	2	Spacer-Bearing
18:2	38-7820	2	Bearing-Ball
18:3	84-0920	1	Pulley-Flat
19	104-0265	1	Spring-Extension
20	323-13	1	Screw-HH

Ref. No.	Part No.	Qty.	Description
21	324-6	4	Screw-HH
22	3296-48	4	Nut-Lock, NI
23	94-8987	1	Bearing
24	323-6	8	Screw-HH
25	3253-12	9	Washer-Lock/Sp
26	3256-24	14	Washer-Flat

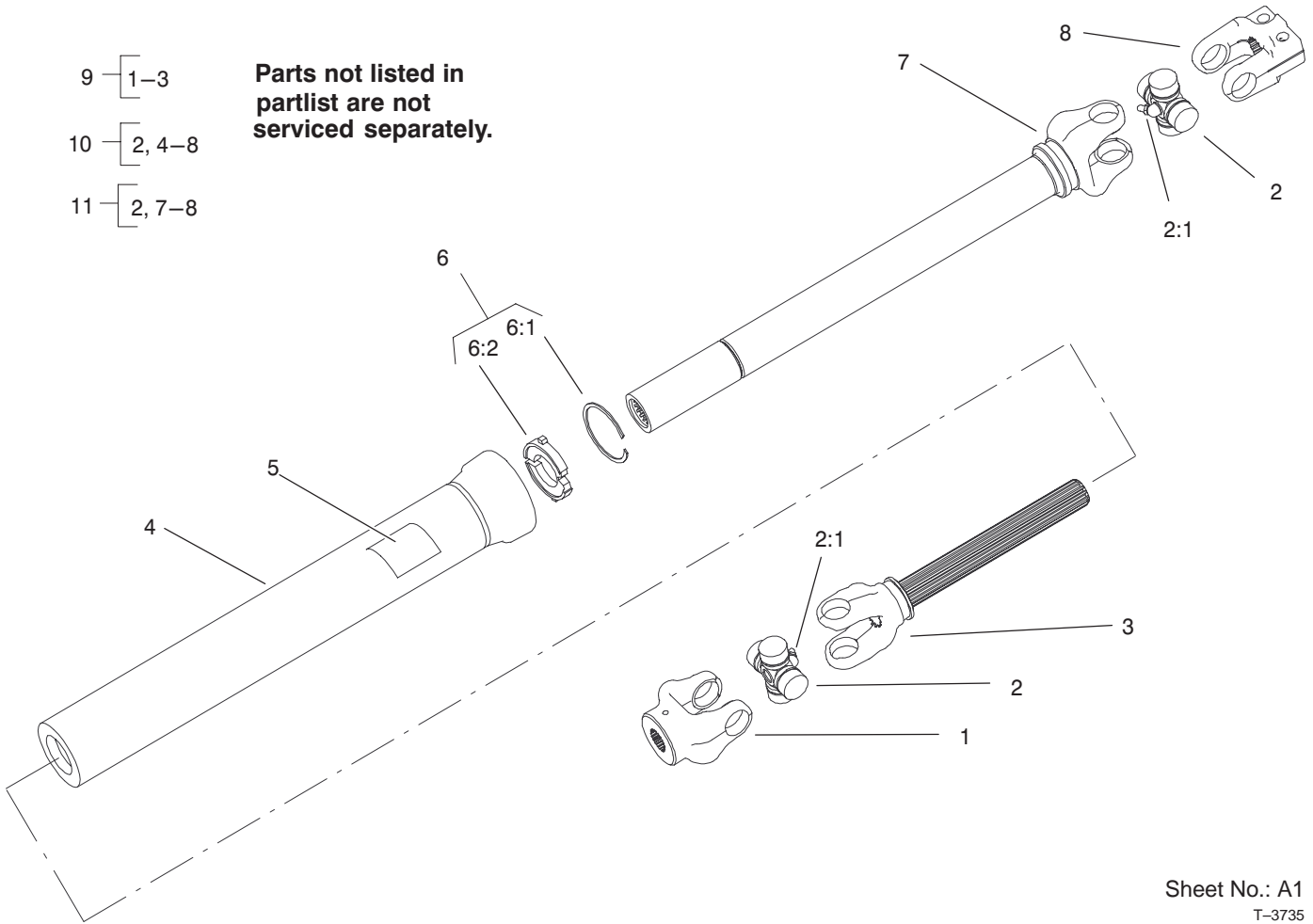


Sheet No.: 4

## Drive Shaft and Belt Assembly

Ref. No.	Part No.	Qty.	Description
1	100-4084-01	1	Arm-Lift
2	86-5350	1	Bumper-Rubber
3	3253-3	2	Washer-Lock
4	321-4	2	Screw-HH
5	3256-26	2	Washer-Flat
6	3217-9	2	Nut-Hex
7	100-4097-01	1	Stand ASM
8	3296-29	2	Nut-Lock, NI
9	322-7	2	Screw-HH
10	32121-34	1	Pin-Roll
11	104-0264	1	Drive Shaft ASM
12	93-4696	1	Pin-Snapper
13	95-0883	1	Pulley
14	95-0884	1	Hub
14:1	3253-18	3	Washer-Lock/Sp
14:2	32104-96	3	Screw-HH
15	104-0271	1	Pulley
16	95-0882	1	Hub
16:1	3253-18	3	Washer-Lock/Sp
16:2	32104-96	3	Screw-HH
17	67-7490	2	Key-Square
18	100-4079	1	Cover-Belt
18:2	98-3113	1	Decal-Caution
18:3	99-4487	1	Decal-Grease
18:4	58-6520	1	Decal-Grease
18:5	105-0709	1	Decal-Warning

Ref. No.	Part No.	Qty.	Description
19	104-0309	1	V-Belt
20	94-8973	1	Shaft
21	32120-8	2	Ring-Snap
22	100-4030-01	1	Tensioner ASM
23	94-8972	1	Spacer-Bearing
24	94-8978	2	Bearing
25	71-5320	1	Washer-Support, Engine
26	33114-020	1	Screw-HH
27	3253-4	1	Washer-Lock
28	323-6	5	Screw-HH
29	3253-21	4	Washer-Lock
30	3256-24	10	Washer-Flat



Sheet No.: A1  
T-3735

## Drive Shaft Assembly No. 104-0264

Ref. No.	Part No.	Qty.	Description
1	62-3800	1	Yoke-End
2	54-9180	2	U-Joint Kit
2:1	62-3820	1	Fitting-Grease
3	104-0254	1	Yoke And Shaft
4	104-0257	1	Inner Guard
5	93-7283	1	Decal-Danger
6	93-9958	2	Nylon Repair Kit
☆6:1		1	Ring-Retaining
☆6:2		1	Bushing-Nylon
7	104-0255	1	Yoke, Tube, And Slip Sleeve
8	54-9040	1	Yoke-End
9	104-0253	1	Joint And Shaft Half ASM
10	104-0252	1	Joint And Tube Half ASM
11	104-0323	1	Joint And Tube Half ASM

Ref. No.	Part No.	Qty.	Description

☆ Not serviced separately



