



Greensmaster® Flex™ 21

Model No. 04022 - 260000001 and up.

Parts Catalog

Ordering Replacement Parts

To order replacement parts, please supply the part number, the quantity, and the description of each part desired.

Understanding Reference Numbers

Each Identified part in an illustration has a reference number. The reference number for a part also appears in the parts list, along with other information about the part.

This catalog uses two special reference number formats, one to indicate parts in a service assembly and another to indicate the quantity of a given part in an illustration.

Service Assembly Reference Numbers

Parts in service assemblies have reference numbers in the form a:b. The a represents the reference number of the entire service assembly and the b represents a sequential number unique to each part within the service assembly.

For example, a wheel assembly might be identified by reference number 6, the tire by 6:1, the valve by 6:2, and the wheel by 6:3. When you order the assembly identified by reference number 6, you receive all parts identified by reference numbers 6:1, 6:2, and 6:3. However, you may also order any part individually. Reference numbers of this type appear in illustrations and in part lists.

Reference Numbers Indicating Quantity

In an illustration, if a reference number indicates more than one part, the reference number has the form nX y. The n represents the quantity of the part, the X is the multiplication symbol, and the y represents the reference number.

For example, in an illustration, the reference number 2X 37 means that two of the parts identified by reference number 37 are indicated.

Contents

Description	Page	Description	Page
Frame Assembly 3	Camshaft And Valves Assembly 13
Reel Drive Assembly 4	Ignition Assembly 14
Drum Drive and Basket Assembly 5	Governor Assembly 15
Gearbox and Engine Assembly 6	Carburetor Assembly 16
Gearbox Assembly 7	Air Cleaner and Muffler Assembly 17
Differential Assembly No. 108-8601 9	Fuel Tank Assembly 18
Handle Assembly 10	Decal Assembly 19
Crankcase Assembly 12	Attachments and Accessories List 20

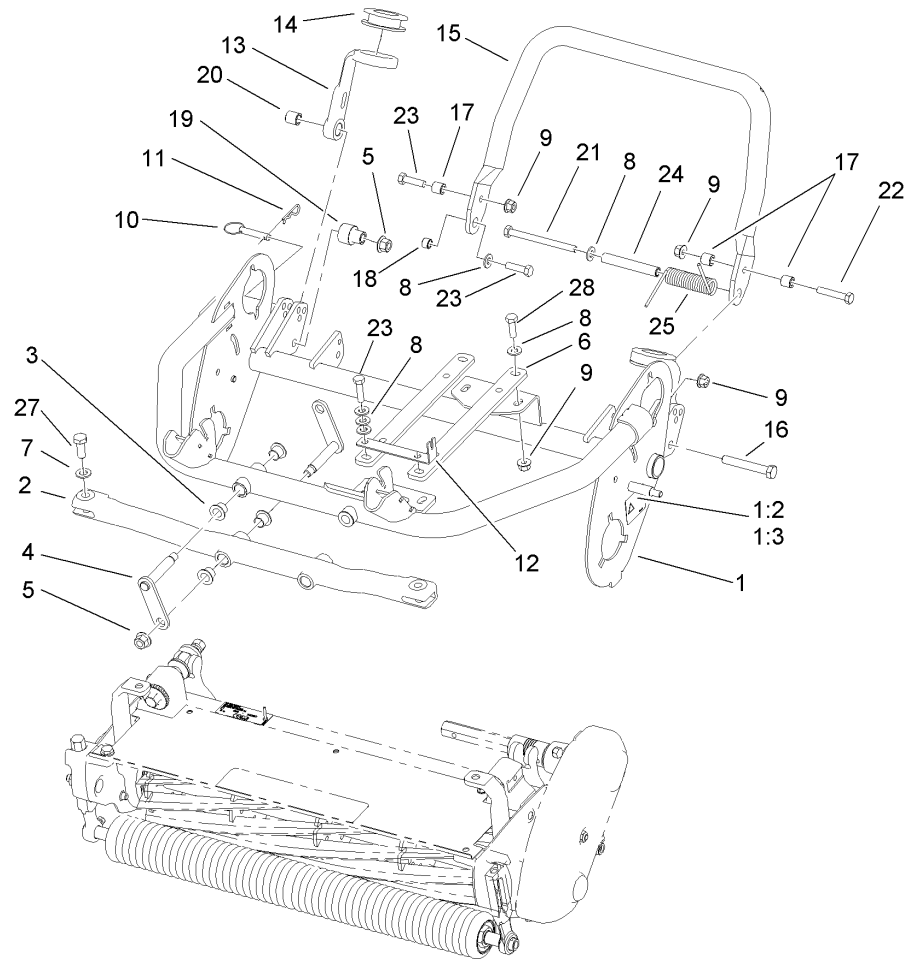
Part Description Abbreviations

Part descriptions in this catalog may include the following abbreviations.

AR. as required	HYD. hydraulic
ASM. assembly	LH. left hand
BBC. blade brake clutch	NI. nylon insert
CARR. carriage	NPTF. national pipe thread fine
DEG. degrees	PFH. phillips flat head
EXT. external	PPH. phillips pan head
FH. flat head	PPHTF. phillips pan head thread forming
GA. gauge	PRH. phillips round head
HD. heavy-duty	PTH. phillips truss head
HF. hex flange	PTO. power-take-off
HH. hex head	RH. right hand
HHF. hex head flange	ROPS. roll-over protection system
HHFTF. hex head flange thread forming	SFH. slotted fillister head
HJ. hex jam	SHH. slotted hex head
HLH. hex lag head	SHWH. slotted hex washer head
HOC. height-of-cut	SPH. slotted pan head
HSBH. hex socket button head	SQH. square head
HSFH. hex socket flat head	SRH. slotted round head
HSH. hex socket head	STD. standard
HWH. hex washer head	TAP. self tapping
HWHTF. hex washer head thread forming	TTH. torx truss head

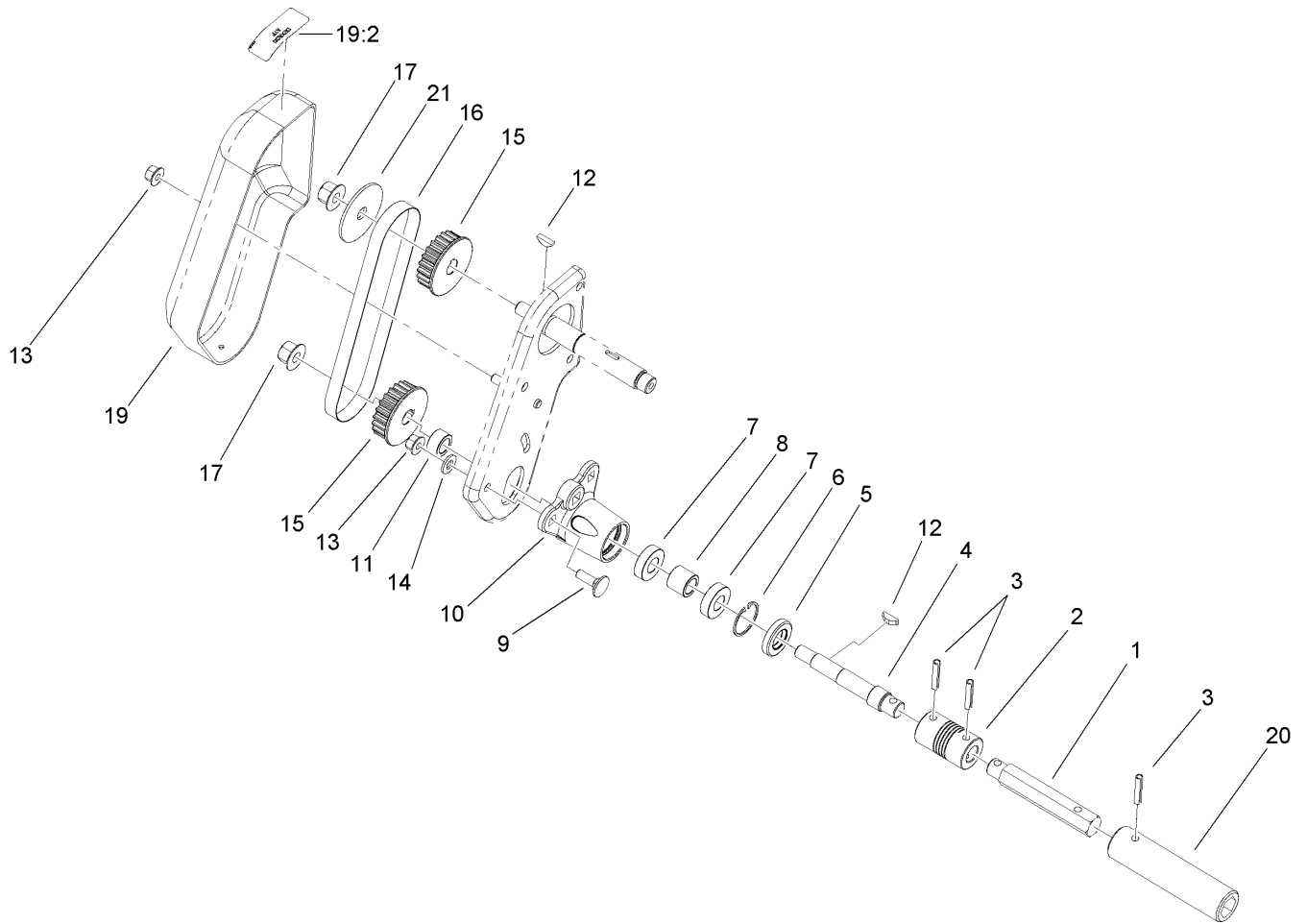
Footnotes

- ❶ Not serviced separately



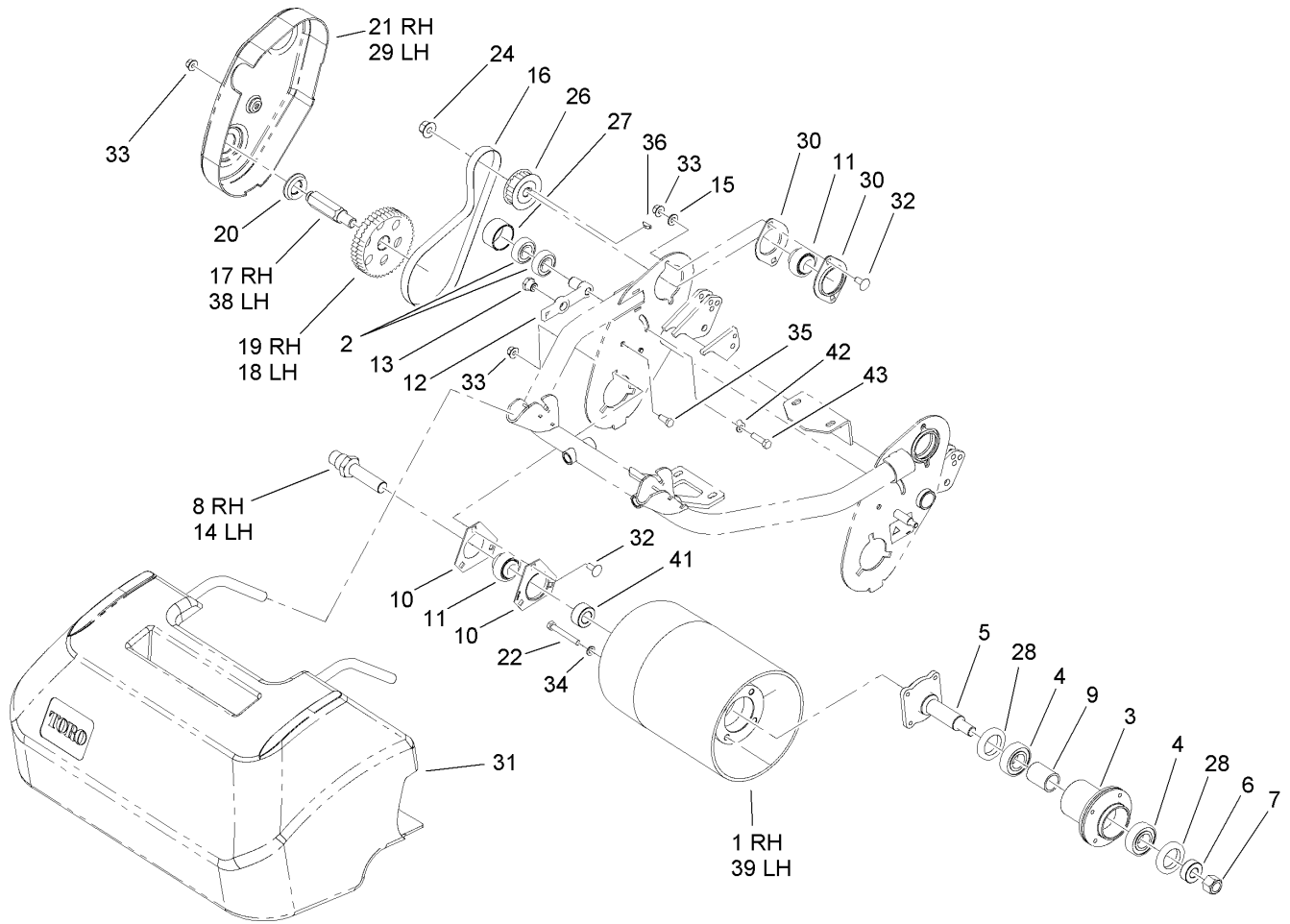
Frame Assembly

Ref	Part No.	Qty.	Description	Ref	Part No.	Qty.	Description
1	110-2401	1	Frame ASM	23	33114-030	3	Screw-HH
1:2	93-9356	2	Decal-Warning, Belt	24	104-0502	1	Spacer-Kickstand, Long
1:3	93-9389	2	Decal-Warning, Belt (Japan)	25	99-2011	1	Spring-Torsion
2	104-9798-01	1	Front Frame ASM	27	33115-025	2	Screw-HH
3	93-2561	8	Bushing-Flange	28	33114-025	3	Screw-HH
4	99-2063	4	Link ASM				
5	104-2611	6	Nut-HF				
6	99-2070-01	2	Base-Engine				
7	33095-00	2	Washer-Flat				
8	33094-00	8	Washer-Plain				
9	104-2612	8	Nut-HF				
10	93-6029	2	Pin-Clevis, Ring				
11	3290-467	2	Pin-Hair				
12	105-9939	1	Strap-Support, Cable				
13	99-3774-03	2	Arm-Handle				
14	65-7510	2	Grommet-Handle				
15	99-3778-03	1	Kickstand				
16	33115-070	2	Screw-HH				
17	93-6024	3	Bushing-Support, Handle				
18	65-7910	1	Spacer				
19	108-3177	2	Spacer-Hub				
20	99-2058	2	Spacer-Support, Handle				
21	33114-100	1	Screw-HH				
22	33114-045	1	Screw-HH				



Reel Drive Assembly

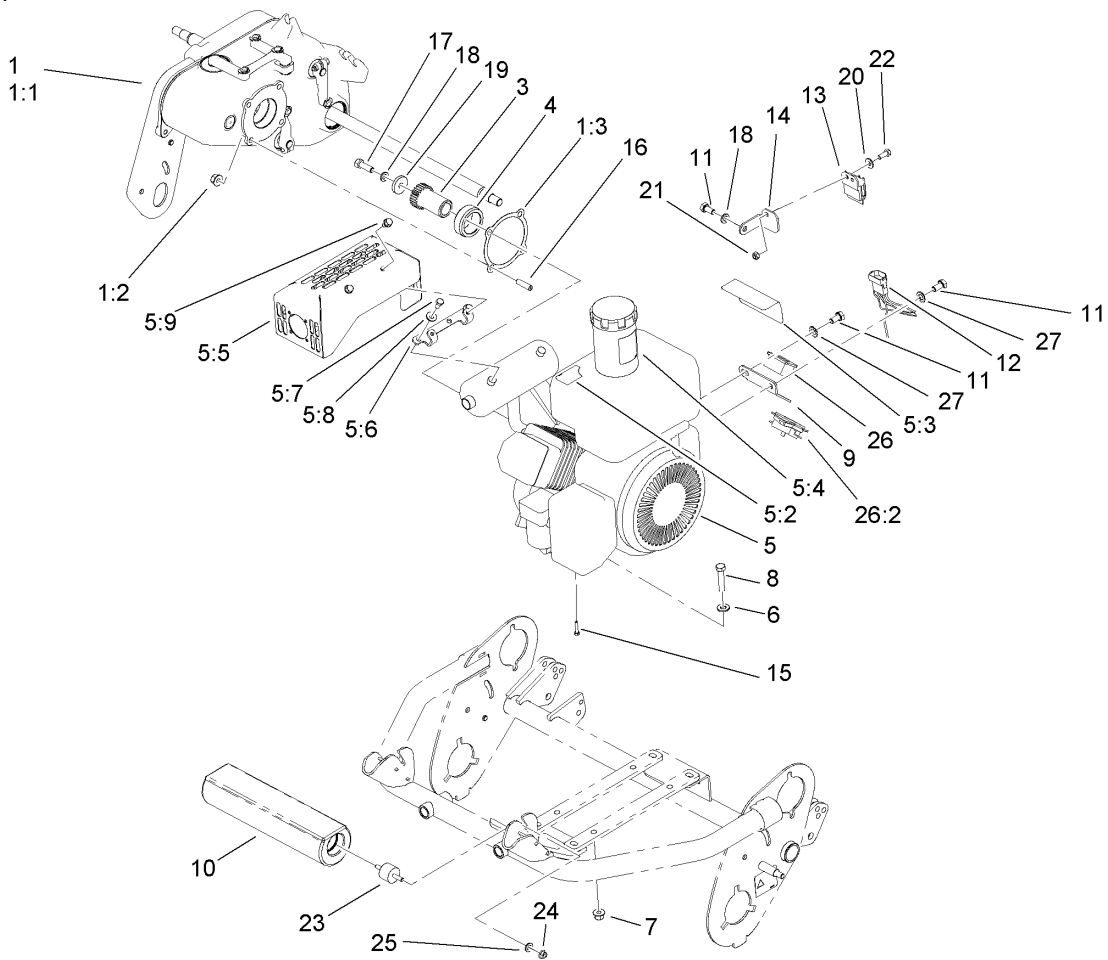
Ref	Part No.	Qty.	Description
1	110-2389	1	Shaft-Hex
2	99-3757	1	Coupling-Flex
3	32121-69	3	Pin-Spring
4	110-2382	1	Shaft-Drive, Reel
5	107-3205	1	Seal-Oil
6	32151-51	1	Ring-Retaining
7	251-336	2	Bearing-Ball
8	99-2079	1	Spacer
9	33124-025	2	Screw-CARR
10	99-2083	1	Housing-Bearing
11	110-2381	1	Spacer
12	3257-30	2	Key-Woodruff
13	104-2612	3	Nut-HF
14	33094-00	2	Washer-Plain
15	107-9044	2	Pulley-22 Tooth
16	99-2022	1	Belt
17	104-2610	2	Nut-HF
19	110-2286	1	Belt Cover ASM
19:2	105-2411	1	Decal-Oil, HYD
20	110-2390	1	Tube-Hex
21	104-0532	1	Washer-Pulley



Drum Drive and Basket Assembly

Ref	Part No.	Qty.	Description
1	107-3210	1	Drum-Traction, RH
2	38-7820	4	Bearing-Ball
3	107-3214	1	Hub-Drum
4	251-82	2	Bearing-Ball
5	107-3215	1	Spindle-Drum
6	65-6530	1	Spacer
7	33028-00	1	Nut-Lock, NI
8	107-3206	1	Shaft-Drum, RH
9	65-6520	1	Spacer
10	108-8626	4	Flange-Triangular
11	106-8448	4	Bearing-Race, Extended
12	107-8179	2	Idler-Drive, Drum
13	105-5770	2	Nut-Shoulder
14	107-3207	1	Shaft-Drum, LH
15	33094-00	4	Washer-Plain
16	107-8175	2	Belt-Drum
17	107-3216	1	Shaft-Wheel, Transport (RH)
18	110-2290	1	Pulley-Driven, Traction (LH)
19	110-2289	1	Pulley-Driven, Traction (RH)
20	104-0533	2	Seal-Cover, Drum
21	105-5326	1	Cover-Drum, RH
22	33114-060	8	Screw-HH
24	104-2610	2	Nut-HF
26	110-2315	2	Pulley-Driver, 22 Tooth

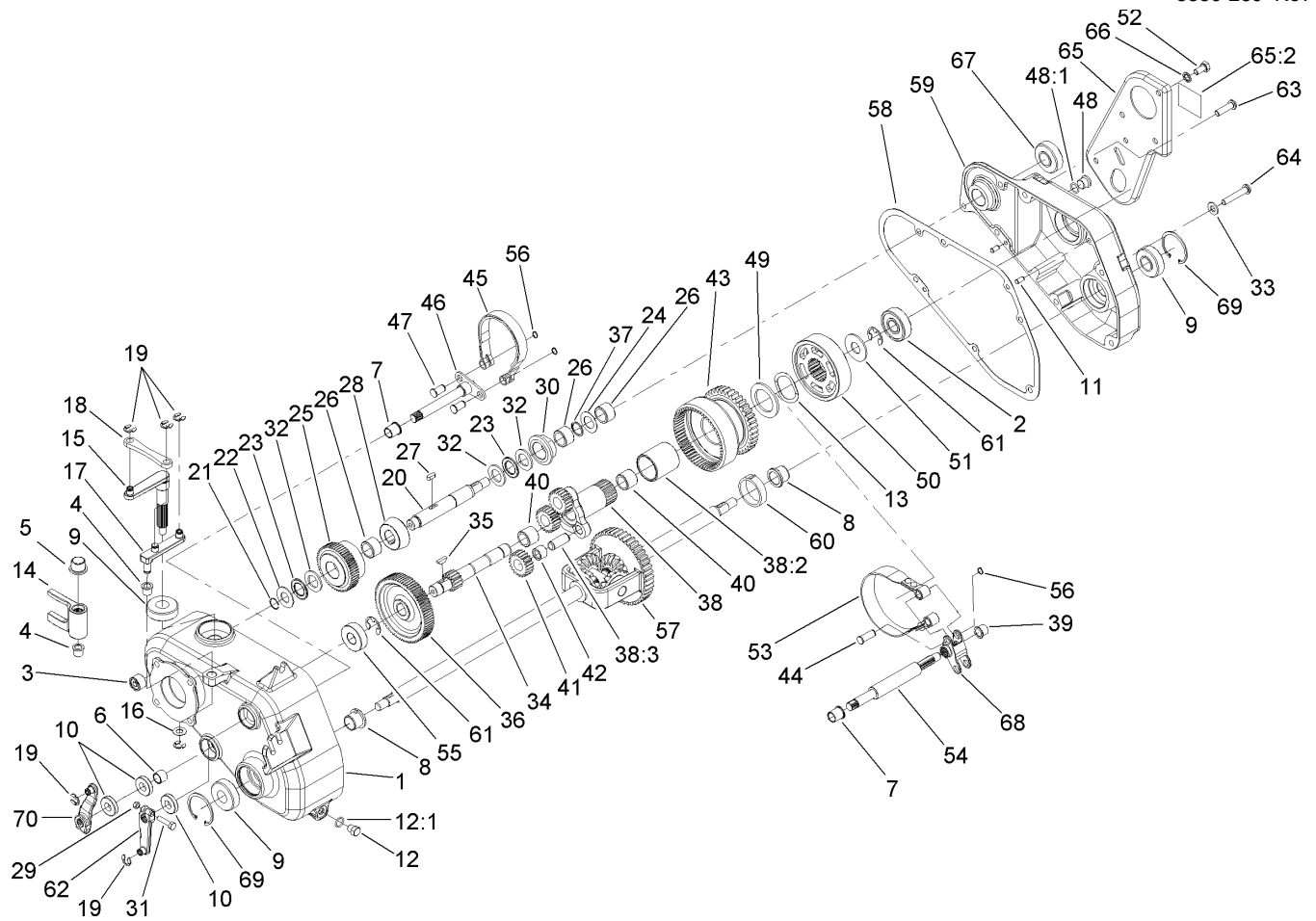
Ref	Part No.	Qty.	Description
27	104-2609	2	Sleeve-Pulley
28	253-159	2	Seal
29	105-5327	1	Cover-Drum, LH
30	700083	4	Flangette-Bearing
31	110-2380	1	Basket With Frame ASM
32	33124-020	10	Screw-CARR
33	104-2612	12	Nut-HF
34	3253-4	8	Washer-Lock
35	33114-020	2	Screw-HH
36	3257-30	2	Key-Woodruff
38	107-3224	1	Shaft-Wheel, Transport (LH)
39	107-3211	1	Drum-Traction, LH
41	106-8417	2	Spacer-Shaft, Drum
42	107-8180	2	Washer-Tab
43	33114-030	2	Screw-HH



Gearbox and Engine Assembly

Ref	Part No.	Qty.	Description
1	110-2399	1	Gearbox Service ASM
1:1		1	Gearbox ASM
1:2	104-2612	4	Nut-HF
1:3	99-2052	1	Gasket-Flange
3	110-2445	1	Gear-Engine, 28T
4	99-2001	1	Adapter-Engine
5	107-7603	1	Engine ASM
5:2	105-5309	1	Decal-Surface, Hot (Ce)
5:2	83-2560	1	Decal-Surface, Hot
5:3	92-4813	1	Decal-Danger (Japan)
5:3	93-7348	1	Decal-Danger
5:4	93-9886	1	Decal-Fuel
5:5	104-9784-03	1	Guard-Muffler
5:6	104-9771	2	Bracket-Guard, Muffler
5:7	33113-012	4	Screw-HH
5:8	3256-22	4	Washer-Flat
5:9	104-2628	4	Screw-HWH
6	33094-00	4	Washer-Plain
7	104-2612	8	Nut-HF
8	33114-040	4	Screw-HH
9	104-2622	1	Bracket-Meter, Hour
10	107-8191-01	1	Damper-13Lbs
11	33114-016	3	Screw-HH
12	105-5323	1	Module-Harness, Wire

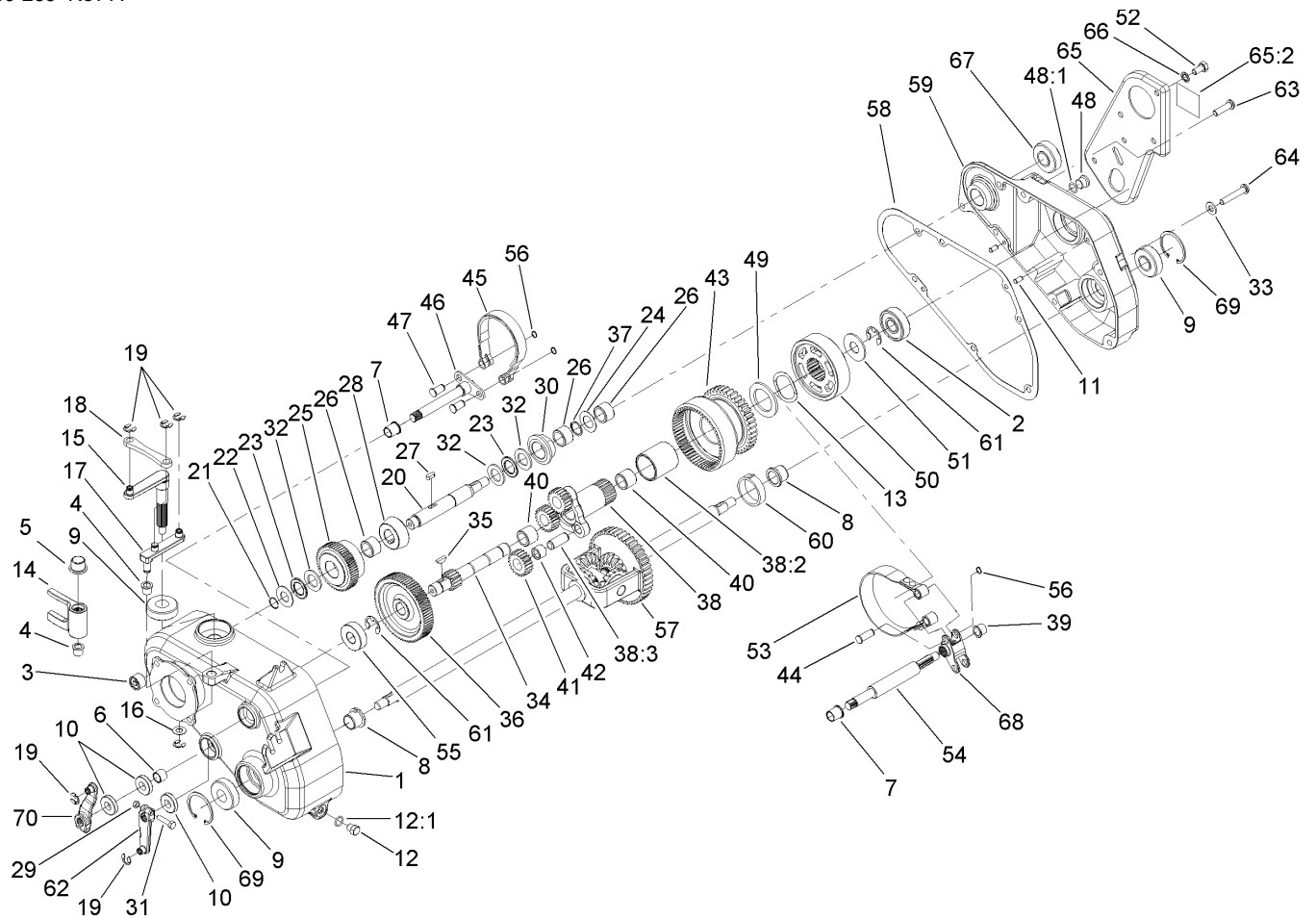
Ref	Part No.	Qty.	Description
13	1-323430	1	Module-Interlock
14	94-5861	1	Bracket-Module
15	94-9015	1	Screw-HH
16	108-9446	4	Screw-Set
17	3210-5	1	Screw-HH
18	3253-4	2	Washer-Lock
19	65-8270	1	Washer
20	3256-22	1	Washer-Flat
21	33023-00	1	Nut-Lock
22	33113-016	1	Screw-HH
23	110-2259	2	Mount-Isolator
24	33003-00	2	Nut-HF
25	107-7601	2	Washer-Tab
26	104-4233	1	Meter-Hour
26:2	104-4234	1	Clip-Mounting
27	3255-9	2	Washer-Lock, EXT



Gearbox Assembly

Ref	Part No.	Qty.	Description
1	106-4682	1	Housing-Gearbox
2	110-7339	1	Bearing-Ball
3	98-4194	1	Bearing-Needle, Caged
4	256-316	2	Bushing
5	256-287	1	Bushing
6	256-1	1	Bushing
7	256-219	2	Bushing
8	99-2062	2	Bushing-Keyed, Flanged
9	107-8132	3	Seal-Oil
10	99-2056	3	Seal-Oil
11	95-0715	2	Pin-Dowel
12	353-948	1	Fitting-Plug
12:1	237-118	1	O-Ring
13	105-9944	1	Washer-Wave, Spring
14	99-2014	1	Fork-Clutch
15	99-2015	1	Shaft-Fork
16	37-8080	1	Washer-Thrust
17	110-2450	1	Lever-Bellcrank
18	99-3780	1	Link
19	32151-47	6	Ring-Retaining
20	99-2009	1	Shaft-Clutch
21	99-3805	1	Ring-Retaining
22	99-3806	1	Washer-Thrust
23	99-3836	2	Bearing-Thrust

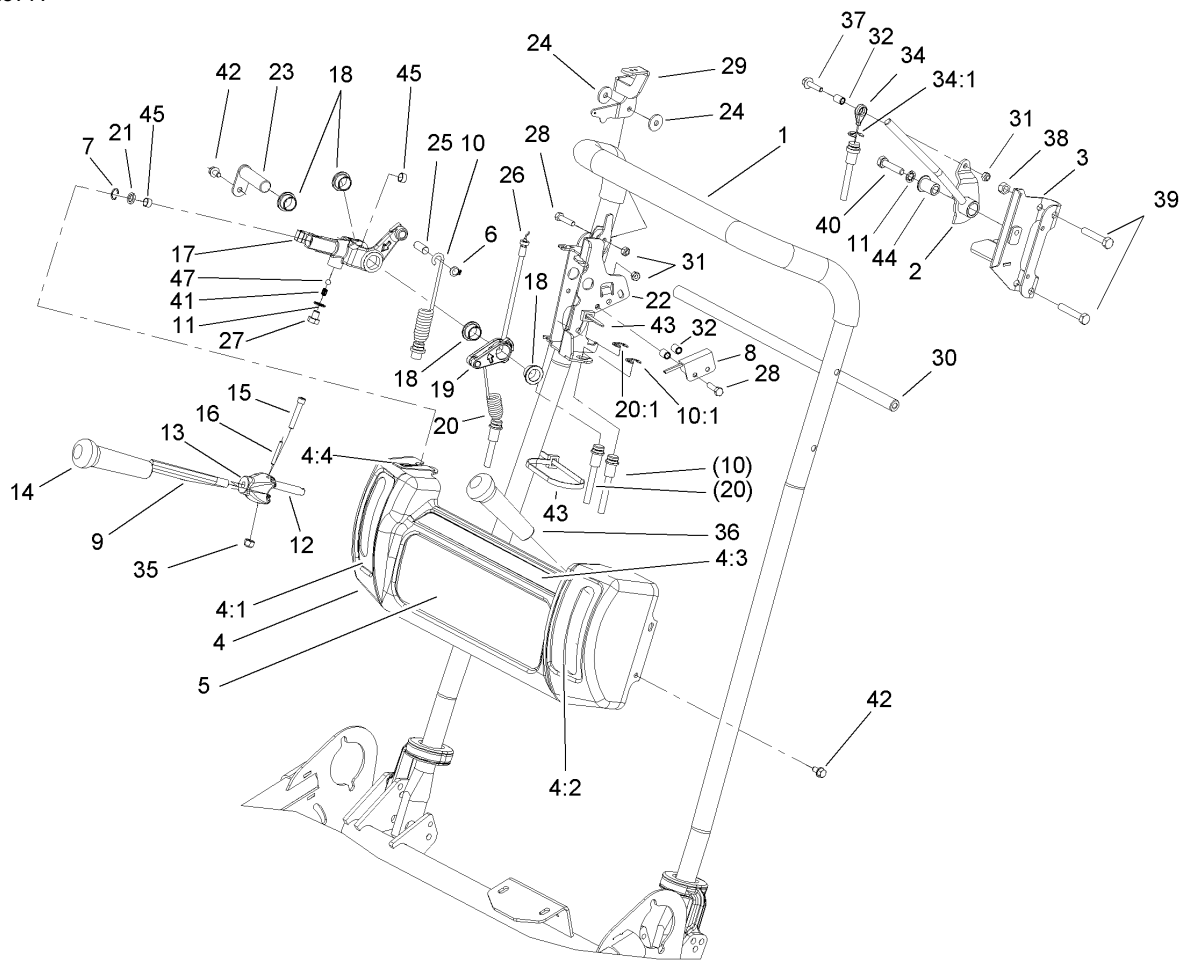
Ref	Part No.	Qty.	Description
24	99-3837	1	Washer-Thrust
25	110-2444	1	Gear-Clutch, 55 Tooth (Reel Crowned)
26	1523	3	Bearing-Needle
27	99-2059	2	Key-Square
28	107-3232	1	Cone ASM
29	33023-00	2	Nut-Lock
30	106-8440	1	Hub-Plunger
31	33113-025	2	Screw-HH
32	99-3807	3	Washer-Thrust
33	33094-00	4	Washer-Plain
34	99-2003	1	Gear-Sun
35	3257-30	1	Key-Woodruff
36	110-2442	1	Gear-Traction, 78 Tooth (Crowned)
37	32120-72	1	Ring-Snap
38	107-8166	1	Carrier ASM
38:2	104-0524	1	Bushing-Carrier
38:3	107-9031	3	Pin-Dowel
39	104-9776	1	Bushing-Flanged
40	104-0535	2	Bearing-Needle
41	106-4694	3	Gear-Spur
42	48-2060	3	Bearing-Roller
43	110-2451	1	Gear-Ring, Planetary



Gearbox Assembly (continued)

Ref	Part No.	Qty.	Description
44	106-8444	2	Pin-Clevis, Long
45	99-2049	1	Band-Brake
46	99-2020	1	Shaft-Brake
47	106-8445	2	Pin-Clevis, Short
48	353-989	1	Plug-Hex, Hollow
48:1	237-42	1	O-Ring
49	99-2054	1	Washer-Thrust
50	110-2452	1	Drum-Clutch, Traction
51	99-2055	1	Washer-Thrust
52	33114-016	1	Screw-HH
53	107-9042	1	Clutch Band ASM
54	105-9937	1	Shaft-Clutch, Traction
55	251-6	1	Bearing-Ball
56	32120-46	4	Ring-Retaining
57	108-8601	1	Differential ASM
58	99-2051	1	Gasket
59	106-4683	1	Cover-Gearbox
60	99-2061	1	Bushing-Keyed
61	32151-48	2	E-Ring
62	99-3761	1	Lever-Gearbox
63	99-6208	2	Screw-HSH
64	99-6207	4	Screw-HSBH
65	110-2293	1	Drive Plate ASM
65:2	93-9356	1	Decal-Warning, Belt

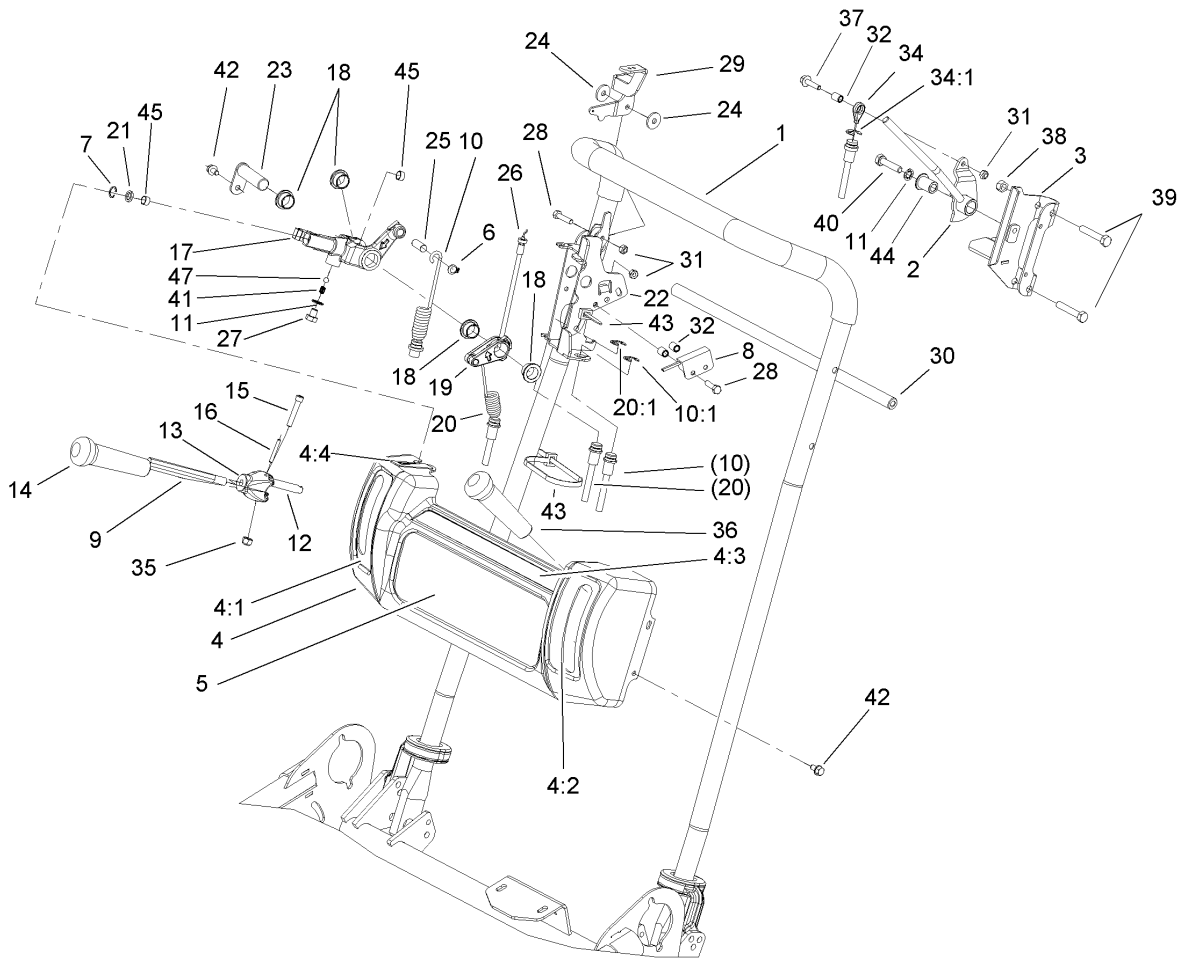
Ref	Part No.	Qty.	Description
65:2	93-9389	1	Decal-Warning, Belt (Japan)
66	3254-2	1	Washer-Lock, Internal
67	105-2429	1	Seal-Oil
68	105-9938	1	Hub-Clutch, Traction
69	32120-62	2	Ring-Retaining
70	110-3451	1	Lever-Gearbox



Handle Assembly

Ref	Part No.	Qty.	Description
1	108-3176	1	Handle
2	106-6143	1	Lever-Brake
3	108-4310-03	1	Brake Bracket ASM
4	104-2633	1	Console ASM
4:1	104-2617	1	Decal-Lever, Traction
4:2	104-2618	1	Decal-Lever, Brake
4:3	104-2621	1	Decal-Warning
4:4	93-6085	1	Decal-Throttle
5	105-9916	1	Decal-Console, Main
6	105-2410	1	Ring-Retaining
7	105-5324	1	Ring-Retaining
8	100-1270	1	Switch-Proximity
9	105-5319	1	Rod-Handle
10	105-5328	1	Cable-Clutch, Traction
10:1	32120-47	1	Ring-Retaining, External
11	3254-2	2	Washer-Lock, Internal
12	99-3835	1	Pin
13	104-9761	1	Hub-Handle, Mount
14	104-9760	1	Knob-Black
15	105-5349	1	Screw-HSH, Special
16	32121-51	1	Pin-Roll
17	104-9758	1	Lever-Control, Traction
18	80-1290	4	Bushing
19	99-3830	1	Lever-Reel

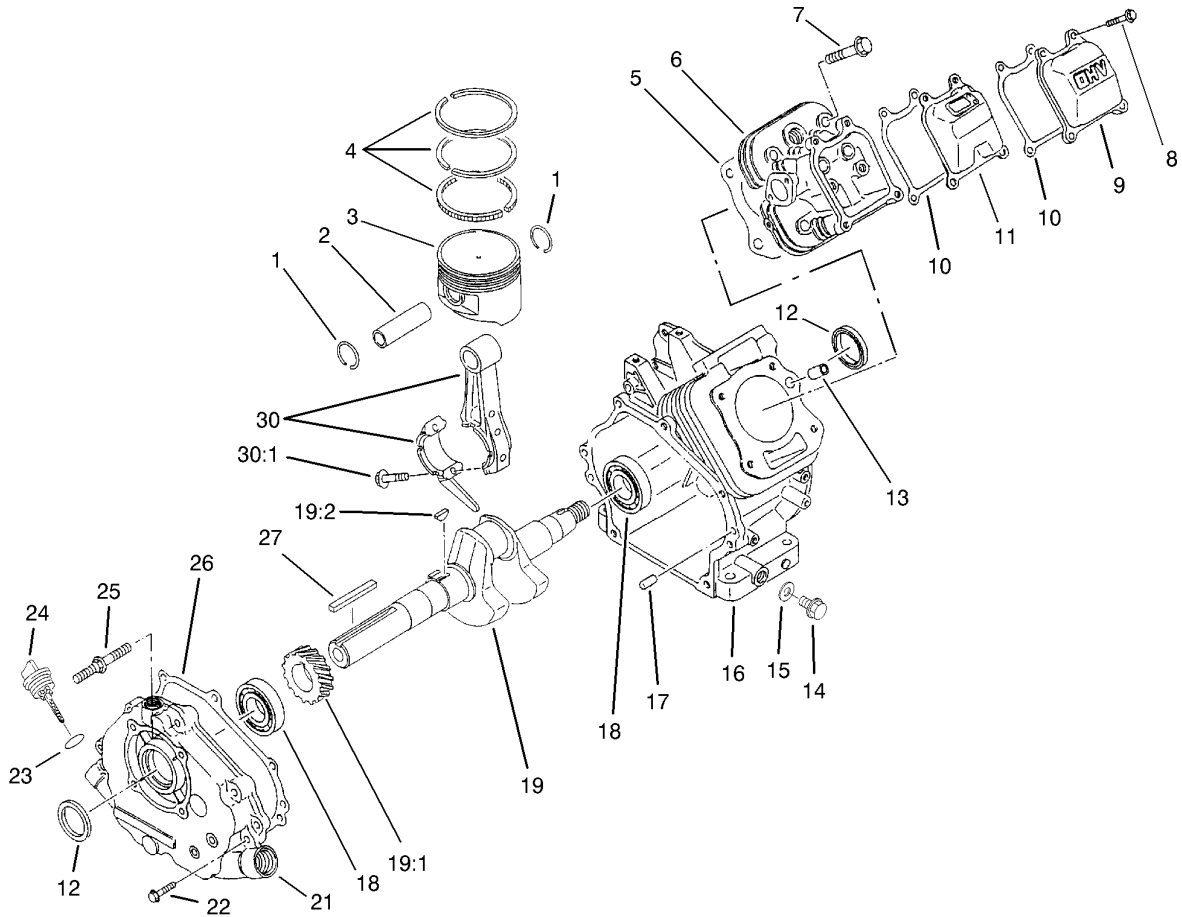
Ref	Part No.	Qty.	Description
20	99-3765	1	Cable-Clutch, Reel
20:1	32120-47	1	Ring-Retaining, External
21	105-2407	1	Wiper
22	108-7652-03	1	Control Bracket ASM
23	99-3833	1	Pin-Lever, Reel
24	66-2921	2	Washer-Friction
25	104-9782	1	Pin-Dowel
26	104-2620	1	Cable-Throttle
27	108-8646	1	Screw-HH, Lock
28	33113-025	3	Screw-HH
29	108-3179	1	Lever-Throttle
30	106-4666	1	Rod-Support
31	33023-00	4	Nut-Lock
32	105-2401	3	Spacer-Cable, Brake
34	99-6214	1	Cable-Brake
34:1	32120-47	1	Ring-Retaining, External
35	3296-42	1	Nut-Lock, NI
36	104-9774	1	Knob-Red
37	33103-025	1	Screw-HHF
38	33024-00	2	Nut-Lock
39	33114-045	4	Screw-HH
40	108-8647	1	Screw-HH, Lock
41	105-2443	1	Spring-Detent
42	104-2628	5	Screw-HWH



Handle Assembly (continued)

Ref	Part No.	Qty.	Description
43	3290-378	4	Tie-Cable
44	106-6135	1	Bushing-Flanged
45	99-6247	2	Bushing-Bronze
47	105-2442	1	Ball-Detent

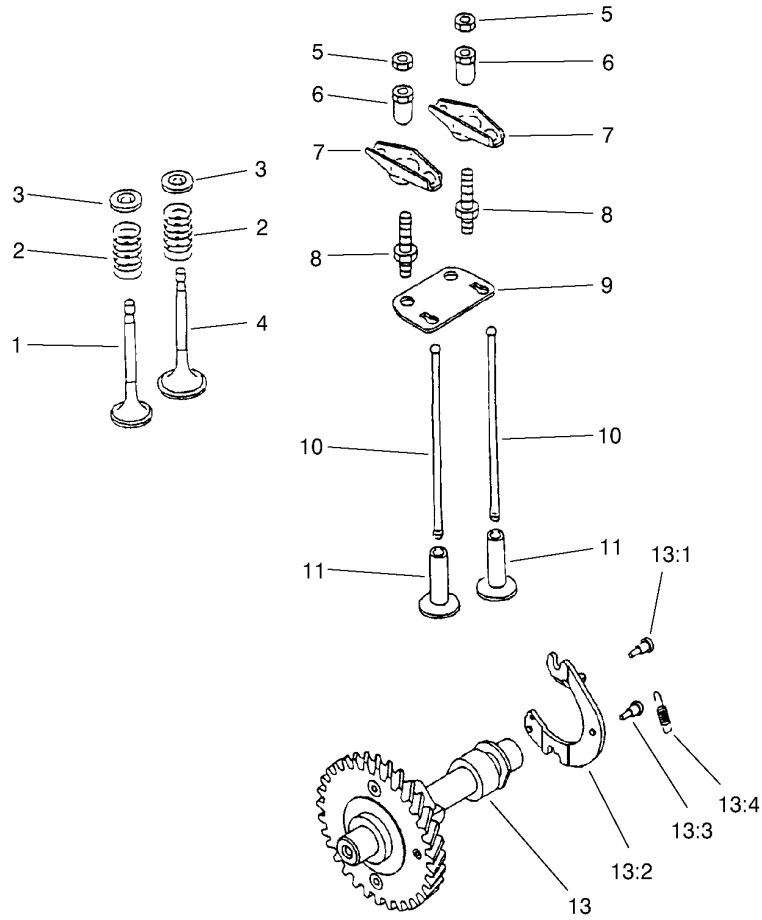
--	--	--	--



Crankcase Assembly

Ref	Part No.	Qty.	Description
1	93-8500	2	Ring-Retaining
2	93-8501	1	Pin-Piston
3	93-8502	1	Piston
3	94-6836	1	Piston-0.5 O/S
4	93-8503	1	Set-Ring, Piston
4	94-6837	1	Set-Ring, Piston (.05Mm)
5	93-8504	1	Gasket-Head
6	93-8505	1	Head-Cylinder
7	93-8506	4	Bolt-Flanged
8	94-6838	4	Bolt-Flanged
9	93-8508	1	Case-Rocker
10	93-8509	2	Gasket-Rocker
11	93-8510	1	Breather
12	93-8511	2	Seal-Oil
13	93-8512	2	Pin
14	93-8513	2	Plug-Drain
15	93-8514	2	Gasket-Plug, Drain
16	93-8515	1	Crankcase
17	93-8516	2	Pin
18	93-8517	2	Bearing-Ball
19	93-8696	1	Crankshaft ASM
19:1	94-9043	1	Gear-Helical
19:2	93-8526	1	Key
21	93-8697	1	Cover-Crankcase

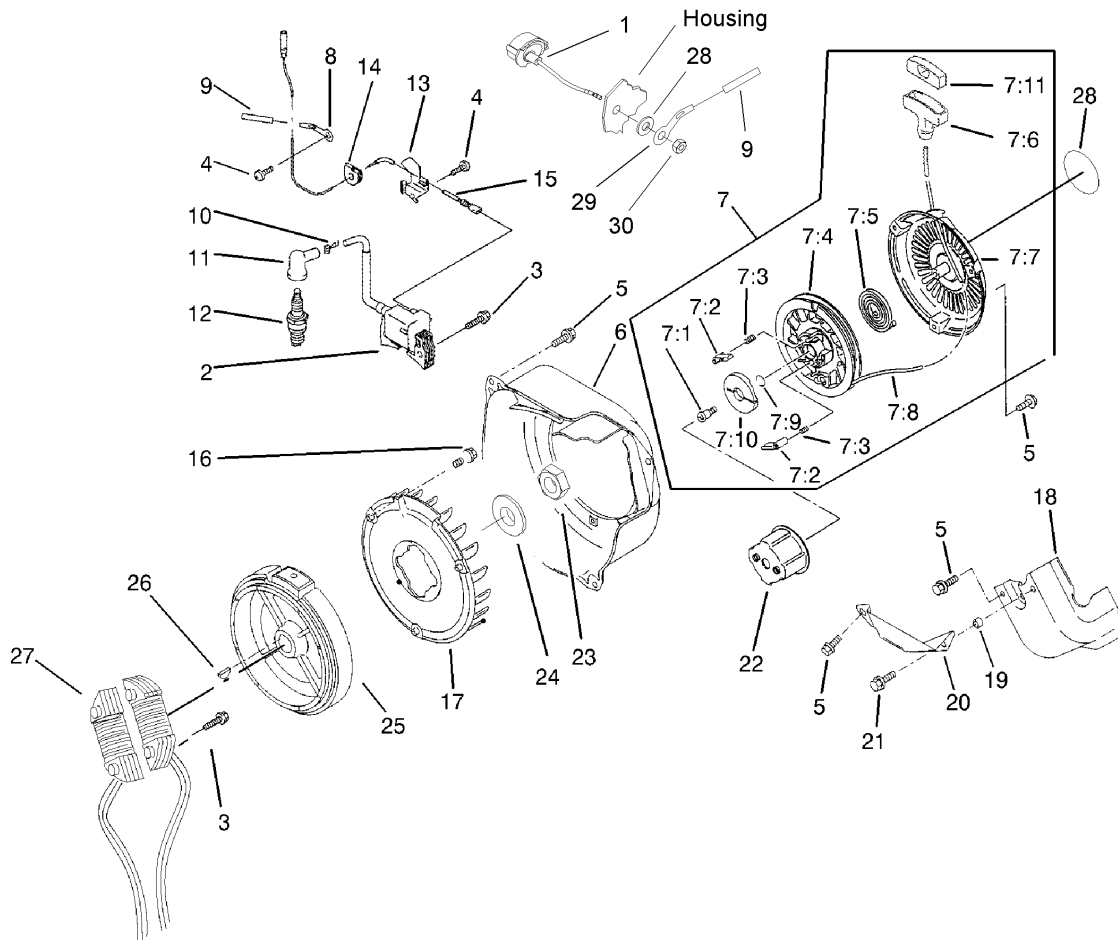
Ref	Part No.	Qty.	Description
22	93-8521	7	Bolt-Flanged
23	94-9041	2	O-Ring
24	93-8523	2	Cap-Filter, Oil
25	93-8524	1	Stud
26	93-8525	1	Gasket-Crankcase
27	93-8526	1	Key
30	93-8528	1	Connecting Rod ASM
30:1	93-8527	2	Bolt-Rod



Camshaft And Valves Assembly

Ref	Part No.	Qty.	Description
1	93-8529	1	Valve-Exhaust
2	93-8530	2	Spring-Valve
3	93-8531	2	Retainer-Spring
4	93-8532	1	Valve-Intake
5	93-8533	2	Nut
6	93-8534	2	Nut
7	93-8535	2	Arm-Rocker
8	93-8536	2	Bolt
9	93-8537	1	Guide
10	93-8538	2	Rod-Push
11	93-8539	2	Tappet
13	93-8699	1	Camshaft ASM
13:1	93-8540	2	Pin
13:2	93-8543	1	Decompressor
13:3	93-8542	1	Pin
13:4	93-8541	1	Spring

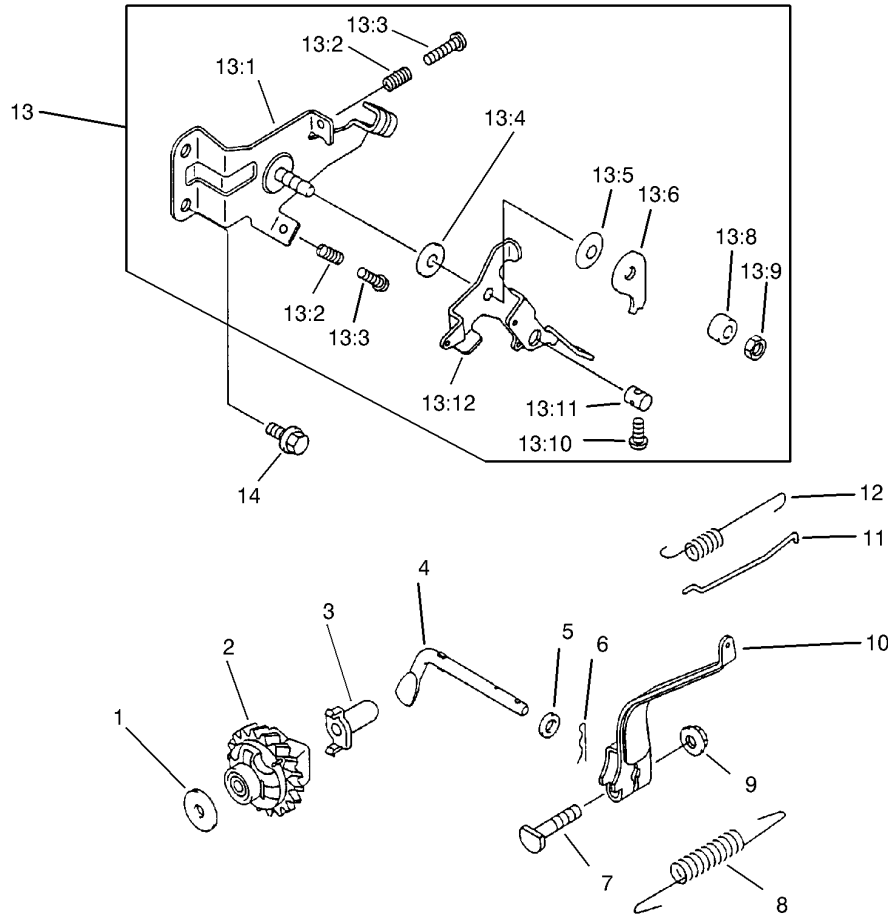
--	--	--	--



Ignition Assembly

Ref	Part No.	Qty.	Description
1	107-7606	1	Sealed Switch ASM
2	94-9031	1	Ignition Coil ASM
3	93-8548	6	Bolt-Flanged
4	93-8549	1	Screw
5	93-8550	10	Bolt-Flanged
6	107-7607	1	Housing-Fan
7	93-8552	1	Recoil Starter ASM
7:1	93-8553	1	Screw
7:2	93-8554	2	Pawl-Recoil
7:3	93-8555	2	Spring-Return
7:4	93-8556	1	Reel-Recoil
7:5	93-8557	1	Spring
7:6	94-9045	1	Grip-Starter, Recoil
7:7	94-9046	1	Case-Recoil
7:8	93-8560	1	Rope
7:9	93-8561	1	Ring-Retaining
7:10	93-8562	1	Guide-Pawl
7:11	94-9044	1	Cap-Grip
8	94-9039	1	Clamp
9	94-9040	2	Tube
10	94-9049	1	Spring-Terminal
11	93-8585	1	Cap-Plug, Spark
12	93-8584	1	Spark Plug
13	93-8583	1	Clamp

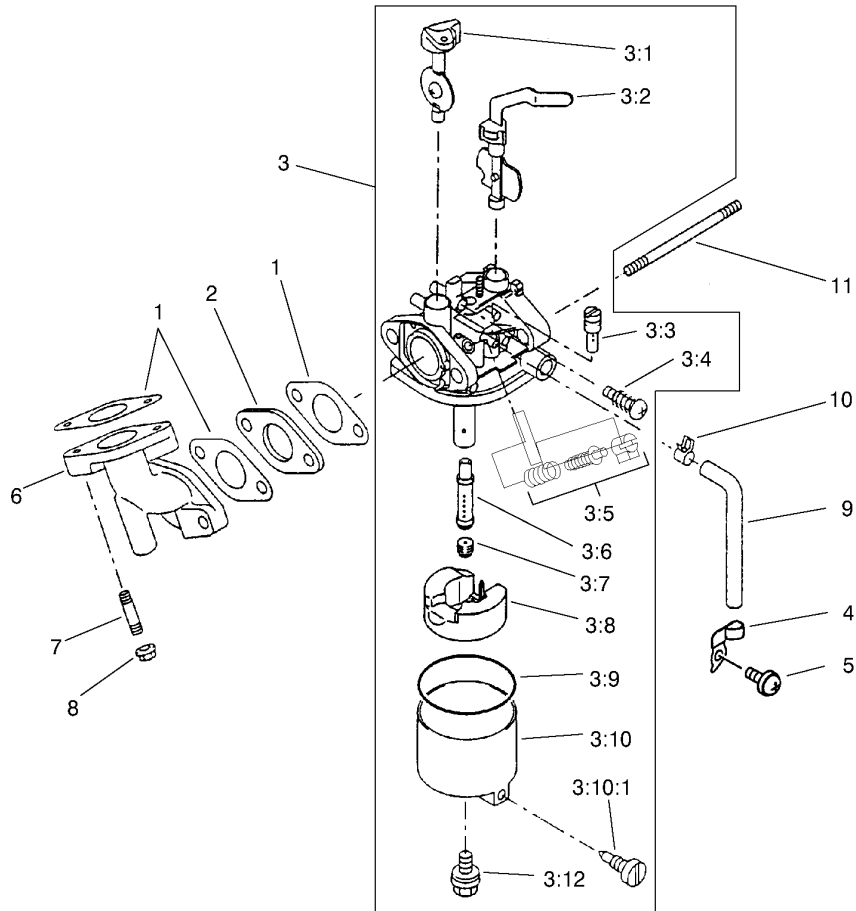
Ref	Part No.	Qty.	Description
14	107-7608	1	Grommet
15	94-9038	1	Wire-Lead
16	94-6840	3	Bolt-Flanged
17	93-8572	1	Fan
18	93-8563	1	Shroud-Engine
19	93-8564	1	Collar
20	93-8565	1	Shroud-Engine
21	93-8566	1	Bolt-Flanged
22	93-8567	1	Pulley-Recoil
23	93-8568	1	Nut
24	93-8569	1	Washer
25	99-6237	1	Flywheel ASM
26	93-8571	1	Key
27	99-4267	1	Coil-Lighting
28	33094-00	1	Washer-Plain
29	107-7609	1	Clamp
30	33014-00	1	Nut-Hex



Governor Assembly

Ref	Part No.	Qty.	Description
1	94-6842	1	Washer
2	94-6841	1	Governor ASM
3	93-8610	1	Sleeve
4	93-8609	1	Arm-Pivot
5	93-8608	1	Washer
6	93-8607	1	Pin-Snap
7	93-8606	1	Bolt
8	94-9030	1	Spring-Governor
9	93-8631	1	Nut
10	93-8603	1	Arm-Governor
11	93-8602	1	Rod-Governor
12	93-8601	1	Spring
13	93-8599	1	Control ASM
13:1	93-8587	1	Bracket
13:2	93-8588	2	Spring
13:3	93-8589	2	Bolt
13:4	93-8590	1	Washer
13:5	93-8591	1	Spring
13:6	93-8592	1	Plate
13:8	93-8594	1	Spacer
13:9	93-8595	1	Nut
13:10	93-8596	1	Screw-Head, Pan
13:11	93-8597	1	Nut
13:12	93-8598	1	Lever

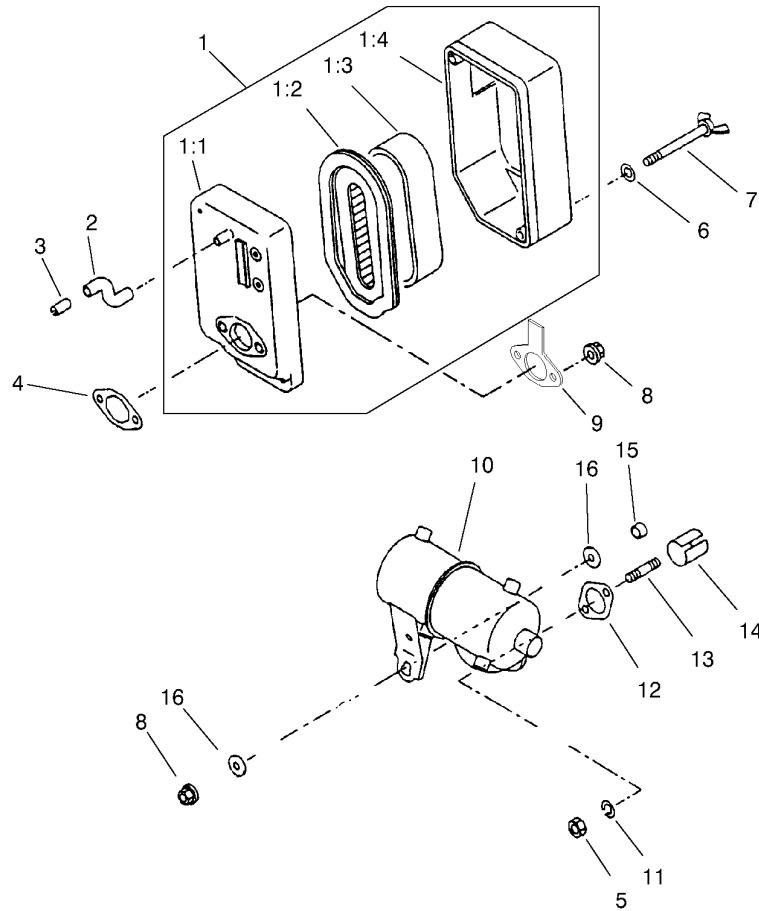
Ref	Part No.	Qty.	Description
14	93-8600	2	Bolt-Flanged



Carburetor Assembly

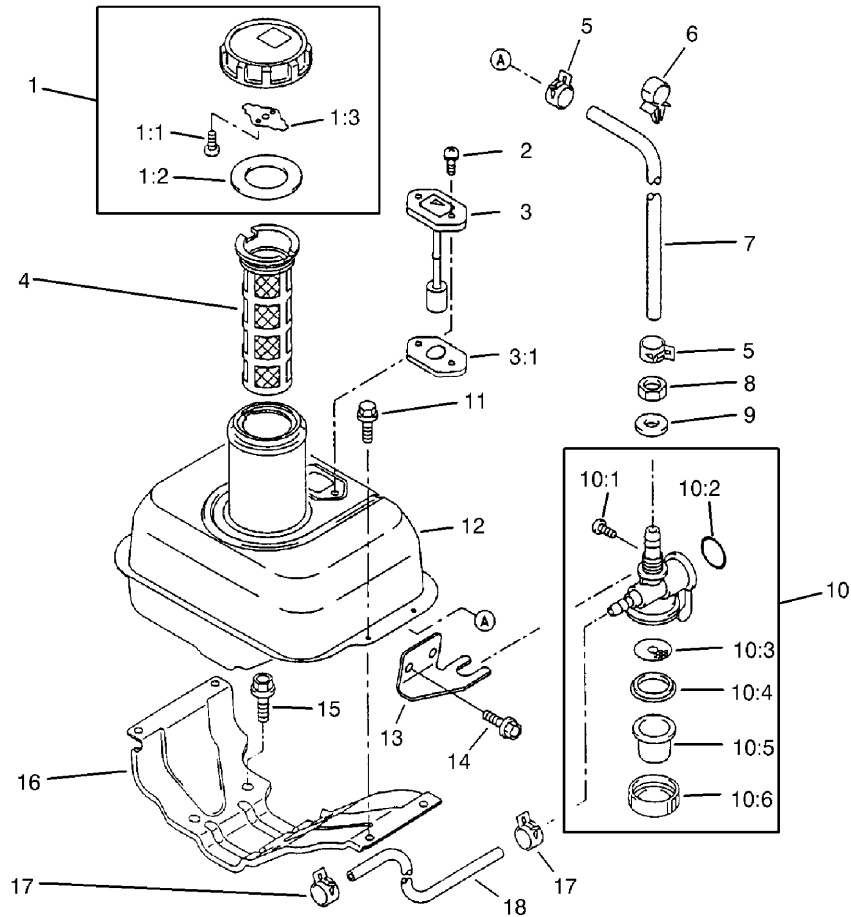
Ref	Part No.	Qty.	Description
1	93-8613	3	Gasket
2	94-9048	1	Insulator
3	94-9032	1	Carburetor ASM
3:1	94-9033	1	Throttle Valve ASM
3:2	93-8617	1	Valve-Choke
3:3	94-9037	1	Jet-Pilot, #40
3:4	93-8619	1	Screw ASM
3:5	94-9034	1	Limiter
3:6	94-9035	1	Nozzle-Main
3:7	94-9036	1	Jet-Main, #65
3:7	98-8736	1	Jet-Main, #60 High Alt
3:7	98-8735	1	Jet-Main, #62 High Alt
3:8	94-6844	1	Float ASM
3:9	93-8624	1	Gasket
3:10	93-8625	1	Float Chamber ASM
3:10:1	93-8626	1	Screw ASM
3:12	93-8627	1	Bolt
4	94-6846	1	Clamp
5	94-6845	1	Screw
6	93-8633	1	Pipe-Intake
7	93-8632	2	Bolt-Stud
8	93-8631	2	Nut
9	93-8630	1	Tube
10	93-8629	1	Clamp

Ref	Part No.	Qty.	Description
11	93-8628	1	Bolt-Stud



Air Cleaner and Muffler Assembly

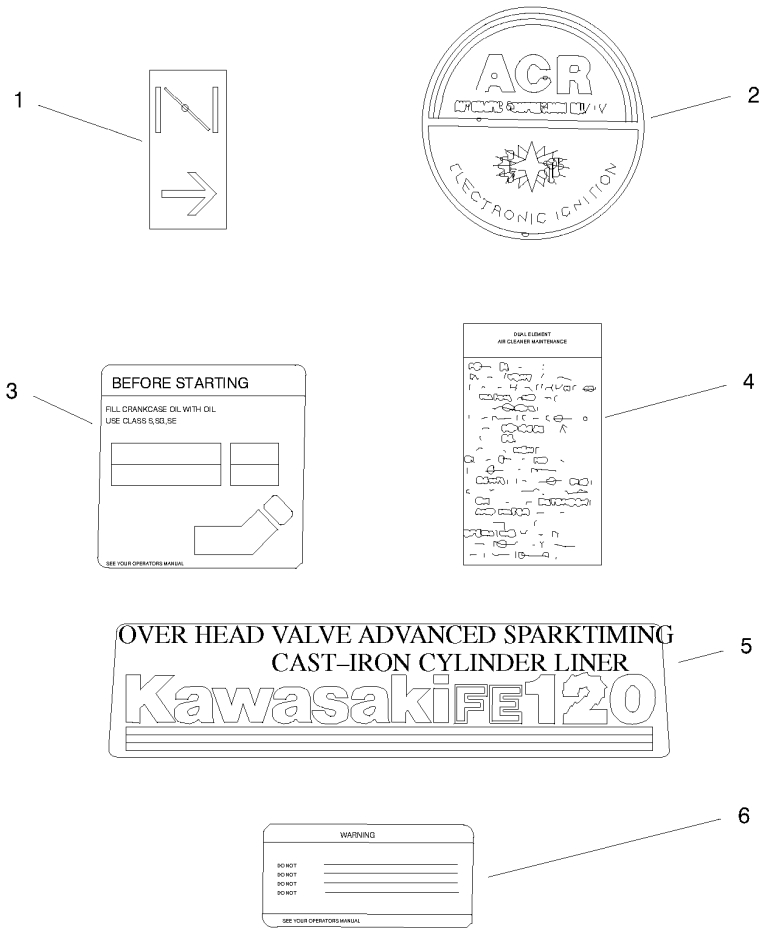
Ref	Part No.	Qty.	Description
1	93-8634	1	Air Filter ASM
1:1	93-8635	1	Case Filter ASM
1:2	93-8636	1	Element-Filter, Air
1:3	93-8637	1	Element-Filter, Air
1:4	93-8638	1	Cap-Filter, Air
2	93-8659	1	Tube
3	93-8658	1	Pipe
4	93-8657	1	Gasket-Filter, Air
5	93-8656	2	Nut-Hex
6	93-8639	2	Washer
7	93-8640	2	Bolt
8	93-8631	3	Nut
9	93-8642	1	Plate-Filter, Air
10	98-3427	1	Muffler
11	93-8655	2	Washer-Spring
12	93-8654	1	Gasket-Muffler
13	94-6848	2	Bolt-Stud
14	93-8652	1	Pipe-Exhaust
15	93-8651	1	Collar
16	93-8650	2	Washer



Fuel Tank Assembly

Ref	Part No.	Qty.	Description
1	93-8660	1	Fuel Cap ASM
1:1	93-8661	2	Screw
1:2	93-8662	1	Gasket
1:3	93-8663	1	Spring
2	93-8686	2	Screw
3	93-8685	1	Gauge-Fuel
3:1	104-2384	1	Gasket-Gauge, Fuel
4	94-6826	1	Filter-Fuel
5	93-8664	2	Clamp
6	93-8665	1	Clamp
7	93-8666	1	Tube
8	94-9042	1	Nut
9	93-8668	1	Washer
10	93-8669	1	TAP ASM
10:1	93-8670	1	Screw
10:2	93-8671	1	O-Ring
10:3	94-6849	1	Filter-TAP
10:4	93-8673	1	Gasket
10:5	93-8674	1	Cup-TAP
10:6	93-8675	1	Nut
11	94-6838	4	Bolt-Flanged
12	104-2382	1	Tank-Fuel
13	93-8681	1	Bracket
14	93-8680	2	Bolt-Flanged

Ref	Part No.	Qty.	Description
15	94-6825	4	Bolt-Flanged
16	104-2383	1	Bracket-Tank
17	93-8676	2	Clamp
18	93-8677	1	Tube



Decal Assembly

Ref	Part No.	Qty.	Description
1	93-8687	1	Decal-Choke
2	94-9027	1	Label-Recoil
3	93-8689	1	Decal-Instructions
4	93-8690	1	Decal-Maintenance
5	94-9028	1	Label-Kawasaki
6	93-8692	1	Decal-Warning

Attachments and Accessories

For 04022 - Greensmaster Flex 21

Product Name	Model/Part
High Height-of-Cut Kit	106-4699
Full Roller ASM	106-6945
Roller Seal Replacement Kit	107-1594
8 Blade Reel ASM	107-7634
11 Blade Cutting Unit	107-7641
Wide Wiehle Roller Kit	107-9038
Full Roller Kit	107-9039
Reel Seal Rebuild Kit	108-3160
Extended Microcut Bed Knife	108-4303
Roller Extension Kit	108-4333
Front Scraper Kit for Narrow Wiehle Roller	108-6468
Front Scraper Kit for Wide Wiehle Roller	110-3961
Front Scraper Kit for Full Roller	110-3962
Front Brush Kit for Narrow Wiehle Roller	110-3963
Front Brush Kit for Wide Wiehle Roller	110-3964
Front Brush Kit for Full Roller	110-3965
Front Comb Kit for Narrow Wiehle Roller	110-3966
Front Comb Kit for Wide Wiehle Roller	110-3967
Front Comb Kit for Full Roller	110-3968
Bedknife-Tournament Cut	93-4263
Bedknife-Low Cut	93-4264
Height-of-Cut Bar ASM	94-9010

NOTES

NOTES

NOTES

