



## Deluxe Suspension Seat Kit Z100, Z200 and Z500 Series Z Master® Mowers

Model No. 107-1891

### Parts Catalog

---

#### Ordering Replacement Parts

To order replacement parts, please supply: the part number, the quantity, and the description of each part desired.

#### Understanding Reference Numbers

Each identified part in an illustration has a reference number. The reference number for a part also appears in the parts list, along with other information about the part.

This catalog uses two special reference number formats, one to indicate parts in a service assembly and another to indicate the quantity of a given part in an illustration.

#### Service Assembly Reference Numbers

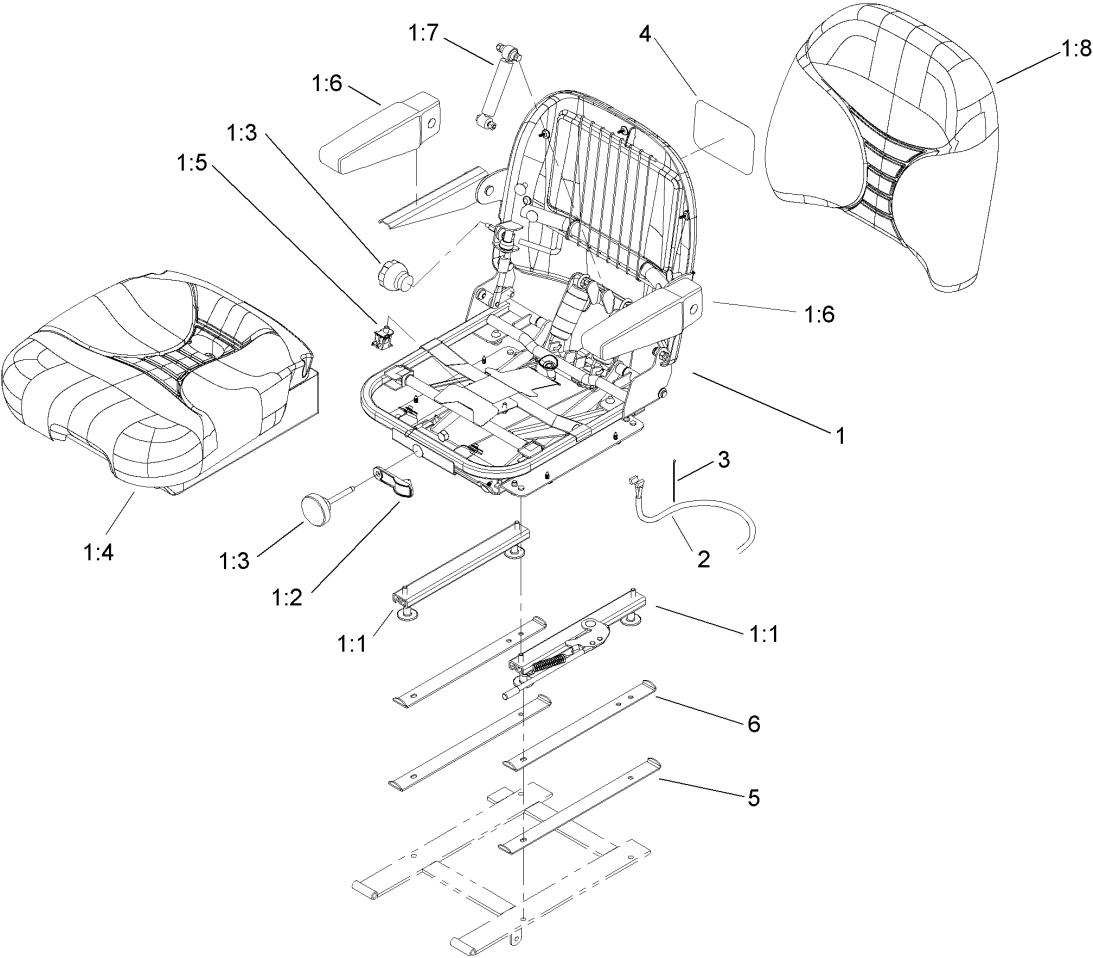
Parts in service assemblies have reference numbers in the form **a:b**. The **a** represents the reference number of the entire service assembly and the **b** represents a sequential number unique to each part within the service assembly.

For example, a wheel assembly might be identified by reference number 6, the tire by **6:1**, the valve by **6:2**, and the wheel by **6:3**. When you order the assembly identified by reference number 6, you receive all parts identified by reference numbers 6:1, 6:2, and 6:3. However, you may also order any part individually. Reference numbers of this type appear in illustrations and in part lists.

#### Reference Numbers Indicating Quantity

In an illustration, if a reference number indicates more than one part, the reference number has the form **nX y**. The **n** represents the quantity of the part, the **X** is the multiplication symbol, and the **y** represents the reference number.

For example, in an illustration, the reference number **2X 37** means that two of the parts identified by reference number 37 are indicated.



**Suspension Seat Kit Assembly**

Ref	Part No.	Qty.	Description				
1	103-4999	1	Seat ASM				
1:1	107-1880	1	Seat Track Kit				
1:2	107-1885	1	Weight Indicator Kit				
1:3	107-1881	1	Knob Kit				
1:4	107-1883	1	Bottom Cushion Kit				
1:5	107-1886	1	Switch Kit				
1:6	107-1887	1	Armrest Kit				
1:7	107-1884	1	Shock Absorber Kit				
1:8	107-1882	1	Back Cushion Kit				
2	103-1227	1	Harness-Wiring, Seat				
3	1-303335	5	Tie-Plastic				
4	99-4693	1	Decal				
5	1-633872-03	2	Stop-Seat				
6	1-653282-03	2	Stop/spacer-Seat				