



Driveshaft Replacement Kit

Groundsmaster® 3000 Series Traction Unit

Model No. 163-1700SP

Form No. 3475-945 Rev A

Installation Instructions

Installation

Loose Parts

Use the chart below to verify that all parts have been shipped.

Description	Qty.	Use
No parts required	—	Prepare the machine.
Driveshaft	1	Install the kit.
Washer	2	
Hex-socket head bolt (M8-1.25 x 30 mm)	6	
Hex-socket head bolt (3/8 x 2-1/4 inch)	2	
Flange nut (3/8 inch)	2	

Preparing the Machine

1. Park the machine on a level surface.
2. Engage the parking brake.
3. Lower the cutting unit.
4. Shut off the engine and remove the key.

Installing the Kit

1. Remove the PTO cover connected to the front attachment (Figure 1).

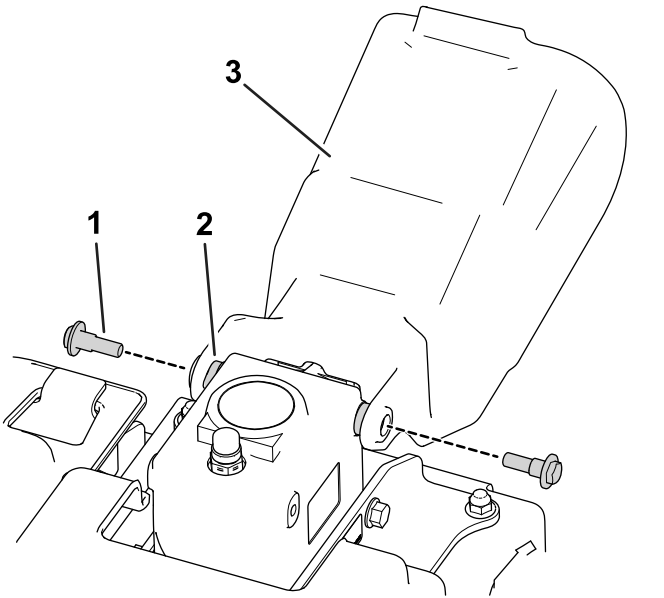


Figure 1

1. Shoulder bolt
2. Spacer
3. PTO cover

2. Remove the bolts and nuts from the PTO shaft (Figure 4) and slide the yoke off of the front attachment shaft. Discard the hardware.



3. Remove the 6 bolts holding the driveshaft to the clutch ([Figure 2](#)). Discard the hardware.

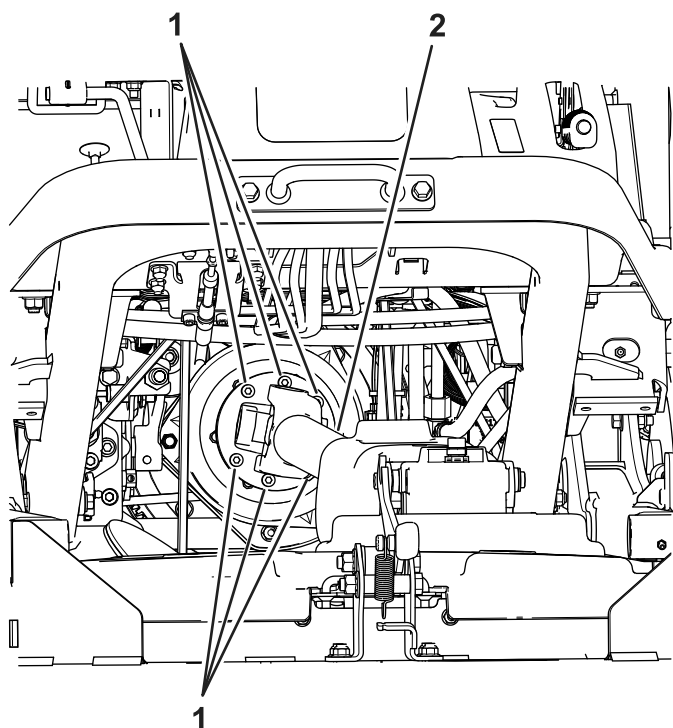


Figure 2

g344047

1. Bolt
2. PTO shaft

4. Remove the driveshaft from the machine.
5. Install the new driveshaft to the clutch with 6 hex-socket head bolts (M8-1.25 x 30 mm); refer to [Figure 2](#).

Note: The bolt hole orientation to the clutch flange is not important.

6. In a star pattern, torque the 6 hex-socket head bolts to 23 to 29 N·m (17 to 21 ft-lb).

Important: If you separate the PTO-driveshaft telescoping end from the clutch end, ensure that the arrows align when you install the telescoping end ([Figure 3](#)).

Important: : If the arrows on the driveshaft are not aligned, severe imbalance may occur in the driveline system.

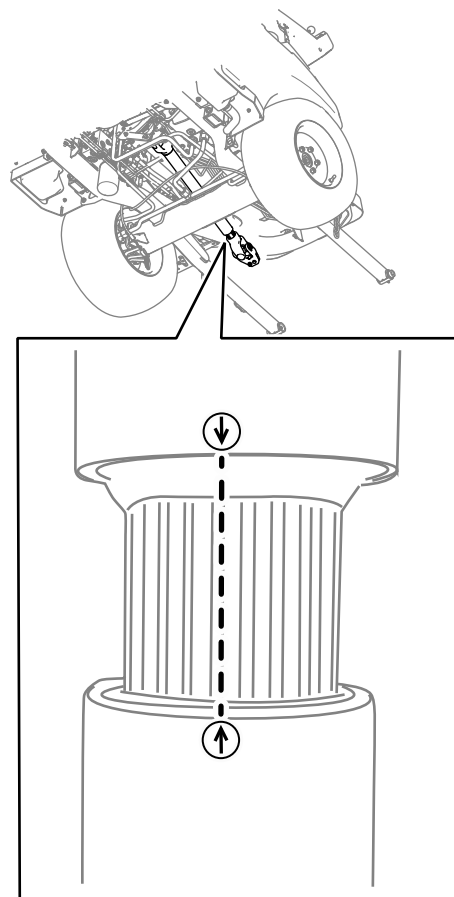


Figure 3

g320510

7. Slide the PTO-shaft yoke onto the front attachment shaft and secure the shafts together with 2 hex-socket head bolt (3/8 x 2-1/4 inch), washers, and flange nuts (3/8 inch) in opposite directions and tighten in an alternating pattern ([Figure 4](#)).

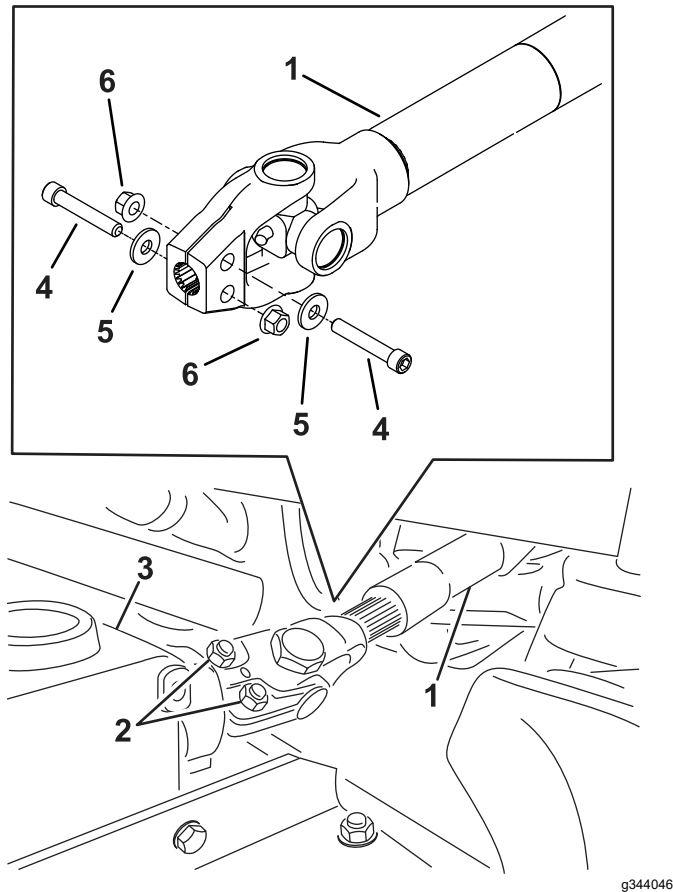


Figure 4

- | | |
|---------------------------|--|
| 1. PTO shaft | 4. Hex-socket head bolt (3/8 x 2-1/4 inch) |
| 2. Bolts and nuts | 5. Washer |
| 3. Front attachment shaft | 6. Flange nuts (3/8 inch) |

8. Torque the nuts to 61 N·m (45 ft-lb).
9. Install the PTO cover to the front attachment ([Figure 1](#)).



Count on it.