



52in Side Discharge Mower Groundsmaster® 200 Series

Model No. 30555 - 240000001 and up.

Parts Catalog

Ordering Replacement Parts

To order replacement parts, please supply the part number, the quantity, and the description of each part desired.

Understanding Reference Numbers

Each Identified part in an illustration has a reference number. The reference number for a part also appears in the parts list, along with other information about the part.

This catalog uses two special reference number formats, one to indicate parts in a service assembly and another to indicate the quantity of a given part in an illustration.

Service Assembly Reference Numbers

Parts in service assemblies have reference numbers in the form a:b. The a represents the reference number of the entire service assembly and the b represents a sequential number unique to each part within the service assembly.

For example, a wheel assembly might be identified by reference number 6, the tire by 6:1, the valve by 6:2, and the wheel by 6:3. When you order the assembly identified by reference number 6, you receive all parts identified by reference numbers 6:1, 6:2, and 6:3. However, you may also order any part individually. Reference numbers of this type appear in illustrations and in part lists.

Reference Numbers Indicating Quantity

In an illustration, if a reference number indicates more than one part, the reference number has the form nX y. The n represents the quantity of the part, the X is the multiplication symbol, and the y represents the reference number.

For example, in an illustration, the reference number 2X 37 means that two of the parts identified by reference number 37 are indicated.

Part Description Abbreviations

Part descriptions in this catalog may include the following abbreviations.

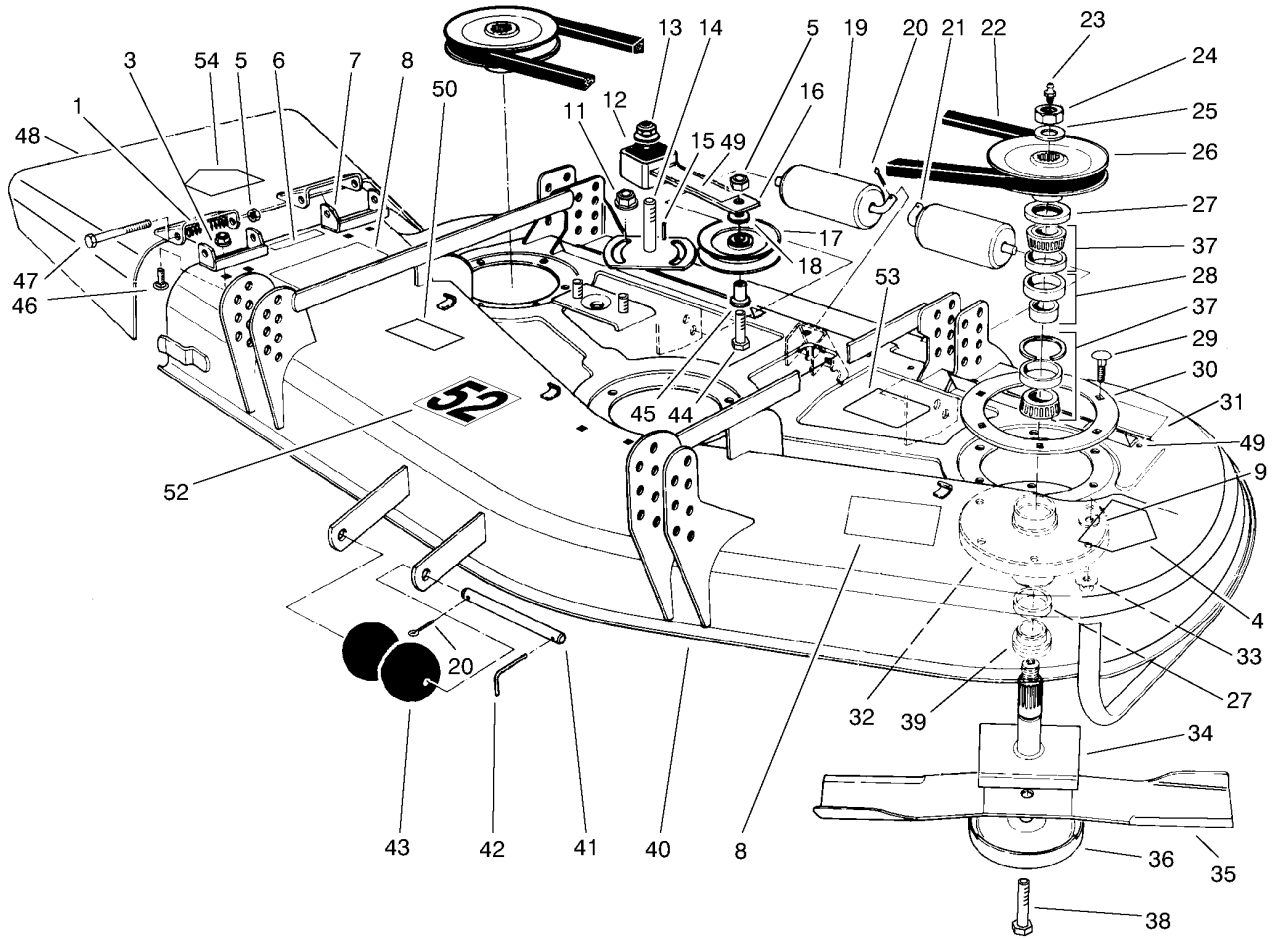
AR.	as required	HYD.	hydraulic
ASM.	assembly	INC.	incorporated
CARR.	carriage	LH.	left hand
DEG.	degrees	NI.	nylon insert
FH.	flat head	PPH.	phillips pan head
GA.	gauge	PTH.	phillips truss head
HF.	hex flange	PTO.	power take off
HH.	hex head	RH.	right hand
HHF.	hex head flange	SFH.	slotted fillister head
HHFTF.	hex head flange thread forming	SHH.	slotted hex head
HJ.	hex jam	SHWH.	slotted hex washer head
HLH.	hex lag head	SPH.	slotted pan head
HOC.	height-of-cut	SQH.	square head
HS.	hex	SRH.	slotted round head
HSBH.	hex socket button head	STD.	standard
HSFH.	hex socket flat head	TAP.	self tapping
HS.	hex socket head	TTH.	torx truss head
HWH.	hex washer head	WH.	wing head
HWHTF.	hex washer head thread forming		

Footnotes

- ❶ Not illustrated

Contents

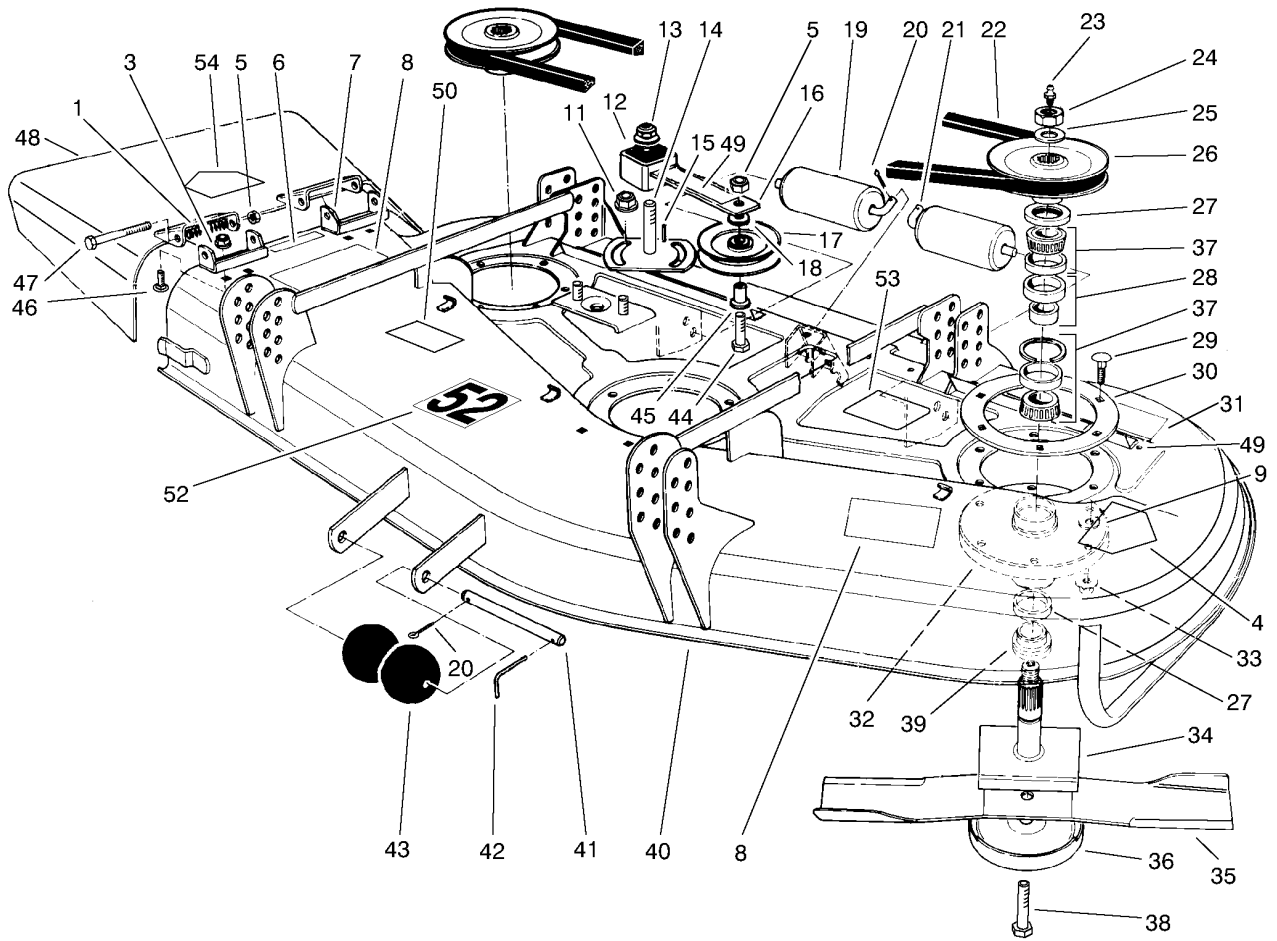
Description	Page
Deck And Spindle Assembly 3
Covers and Gear Box Assembly 5
Gear Box Assembly No. 106-4355 6
Carrier Frame Assembly 7
Pivot Pin And Spacer Assembly 8
Counter Balance Assembly 9



Deck And Spindle Assembly

Ref	Part No.	Qty.	Description
1	40-6230	2	Spring
3	32128-20	4	Nut-HF
4	106-6753	1	Decal-Danger
5	3296-5	3	Nut-Lock, NI
6	107-2916	1	Decal-Danger
7	29-5590	2	Bracket-Pivot
8	107-2908	2	Decal-Danger
9	3256-24	18	Washer-Flat
11	3290-357	2	Nut-HHF
12	3256-27	1	Washer-Flat
13	3296-33	1	Nut-Lock, NI
14	28-9060	1	Plate
15	5-1077	1	Key-Square
16	100-6178	1	Idler Arm Asm(Incl.ref. #49)
17	65-5940	1	Pulley-Idler
18	7-0081	1	Washer-Flat
19	36-1740	2	Roller-Deck
20	3272-11	3	Pin-Cotter
21	40-0340	2	Shaft-Roller, Rear
22	27-1160	1	V-Belt, Deck
23	302-2	3	Fitting-Grease
24	32146-20	3	Nut-Jam
25	92-5836	3	Washer
26	27-0970	3	Pulley

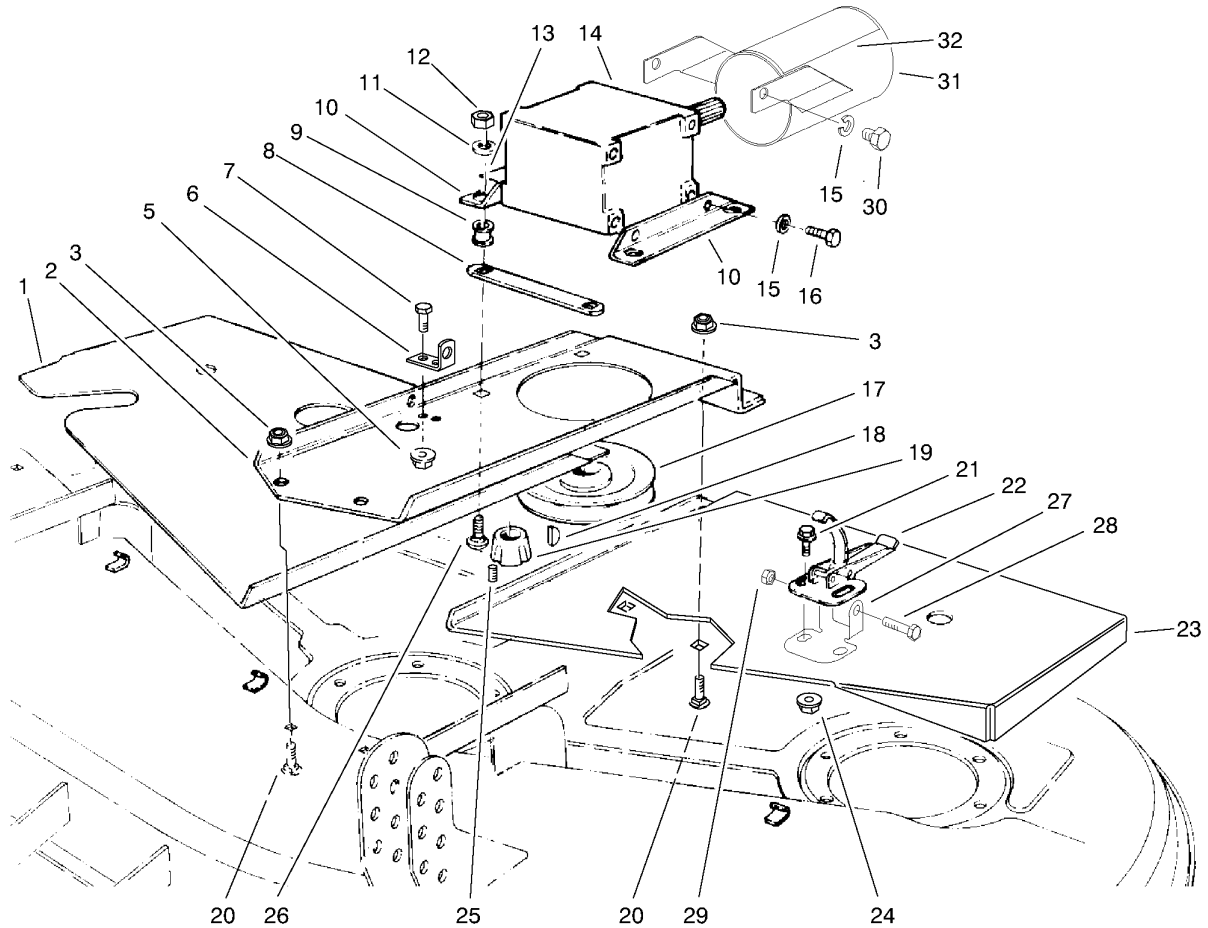
Ref	Part No.	Qty.	Description
27	253-139	6	Seal-Oil
28	27-5970	1	Spacer-Set, Matched
29	3231-22	18	Screw-CARR
30	27-7680	3	Ring Deck Support
31	93-7818	1	Decal-Torque, Blade Bolt
32	61-4160	3	Housing-Spindle
33	32128-21	18	Nut-HF
34	27-0920	3	Shaft-Spindle
35	27-0990	3	Blade
●	44-5480	3	High Sail Blade (Optional)
●	56-2390	3	Blade-Sail, Extra High (Optional)
●	104-1301	3	Blade-Atomic (Optional)
36	72-9361	3	Cup-Scalp, Anti
37	27-0960	3	Bearing ASM
38	92-5816	3	Bolt-Blade
39	27-0950	3	Spacer
40	95-6274	1	Asm-Deck (Incl. Ref. #4, 6, 8, 31, 49, 50, 52 & 53)
41	40-6400	1	Shaft-Roller
42	57-0690	1	Pin-Special
43	29-4820	2	Roller
44	3211-8	1	Screw-HH
45	65-5950	1	Bushing-Pulley
46	3230-23	4	Screw-CARR



Deck And Spindle Assembly (continued)

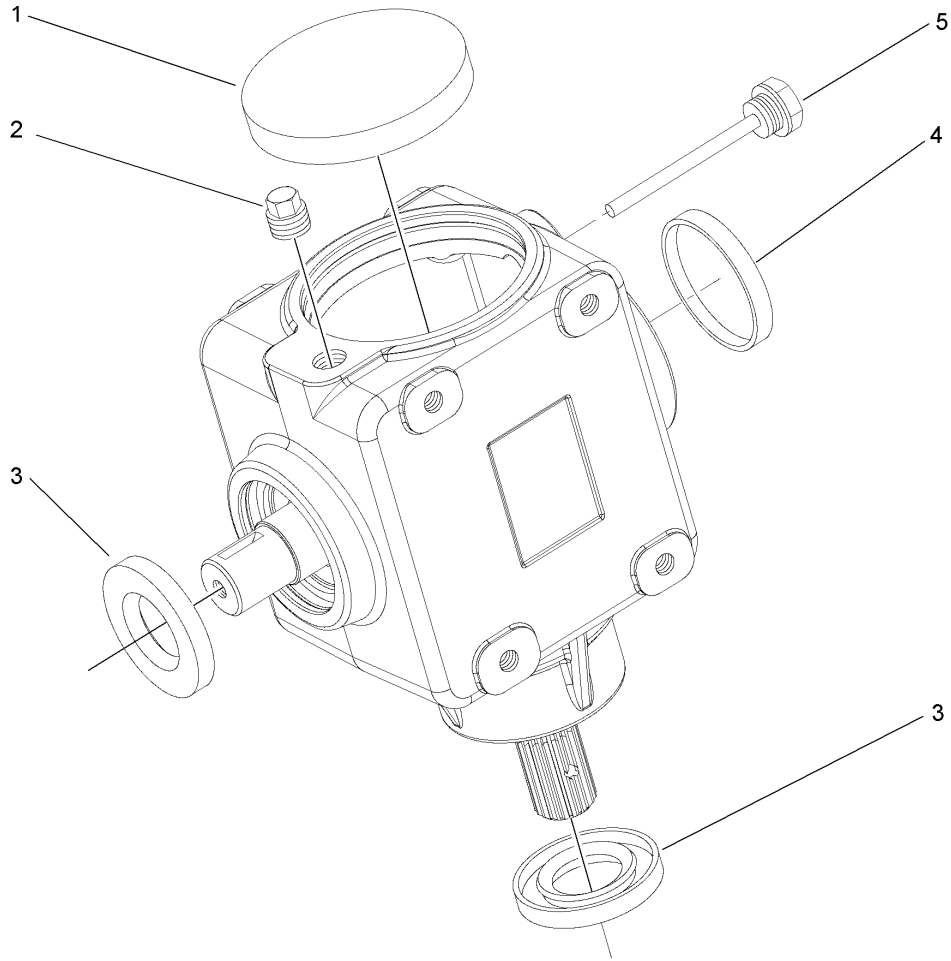
Ref	Part No.	Qty.	Description
47	3211-15	2	Screw-HH
48	93-8714	1	Asm-Grass Deflector (Incl. Ref. #4)
49	100-6578	2	Decal-Danger
50	93-7808	1	Decal - Warning
52	51-3960	1	Decal-52
53	99-5171	1	Decal-Belt Routing
❶	46-8530	3	Asm-Bearing (Incl. Ref. #28 & 37)
❶	27-0870	3	Asm-Spindle (Incl. Ref. #23-28,32, 34 & 39)
❶	95-3078	3	Kit-Spindle (Incl. Ref. #9, 23-29, 32-34 & 36-39)
❶	95-3070	1	Kit-Blade & Belt (Incl. Ref. 22 & 35)
54	43-8480	1	Decal-Danger

--	--	--	--



Covers and Gear Box Assembly

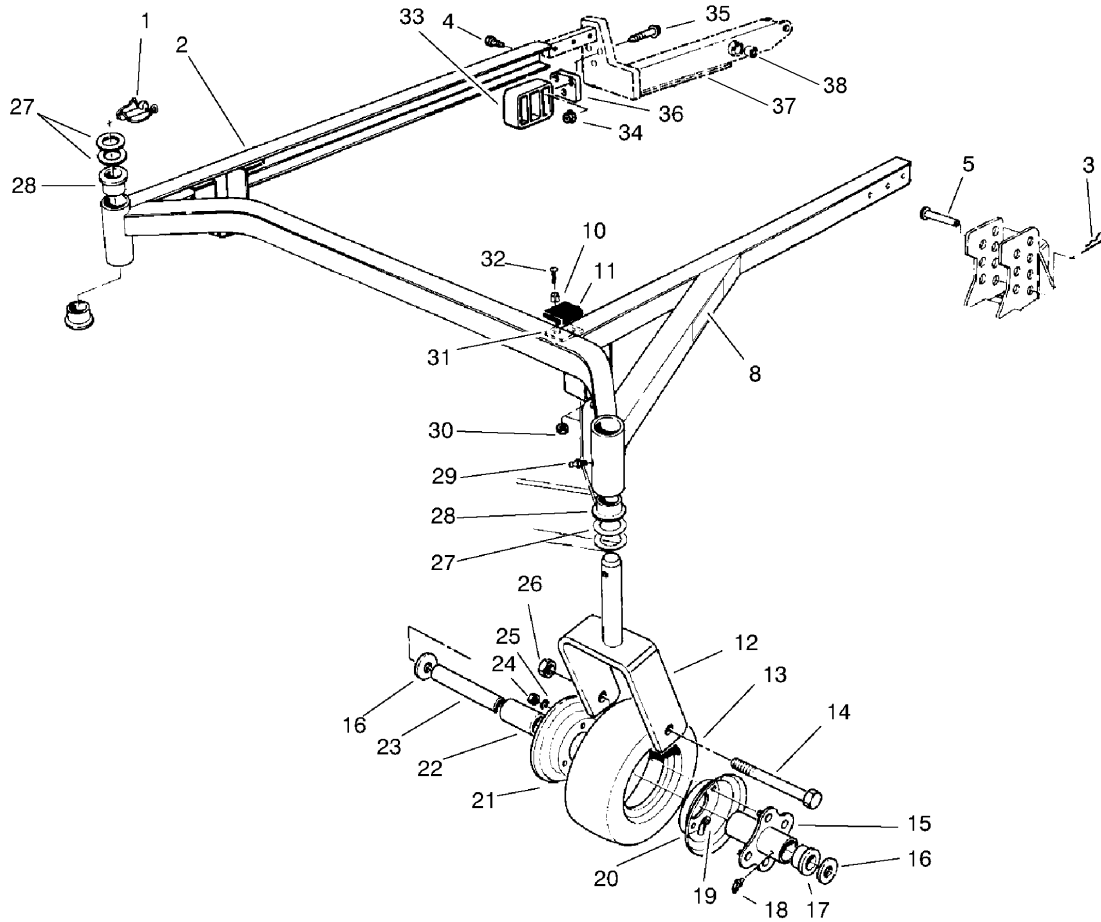
Ref	Part No.	Qty.	Description	Ref	Part No.	Qty.	Description
1	72-9330	1	Cover RH	25	3245-9	2	Screw-Set
2	72-9230	1	Base-Gear Box	26	3231-26	4	Screw-CARR
3	3290-357	4	Nut-HHF	27	93-7043	2	Retainer-Latch
5	32128-20	2	Nut-HF	28	321-8	2	Screw-HH
6	72-9240	1	Bracket-Extension	29	3296-56	2	Nut-Lock, NI
7	322-4	2	Screw-HH	30	323-2	2	Screw-HH
8	68-9890-01	1	Cover-Gear Box	31	107-2904	1	Guard-P.t.o. Shaft (Incl. Ref. #32)
9	63-9750	4	Mount	32	93-7283	1	Decal-Danger
10	68-8560	2	Bracket-Gearbox				
11	63-8410	4	Washer				
12	32153-2	4	Nut-Lock				
13	93-6697	1	Decal-Lube				
14	106-4355	1	Gearbox ASM				
15	3253-21	6	Washer-Lock				
16	323-4	4	Screw-HH				
17	63-9900	1	Pulley				
18	3257-5	1	Key-Woodruff				
19	27-6140	1	Bushing-Taper Lock (Incl. Ref. #25)				
20	3231-27	4	Screw-CARR				
21	3290-321	6	Screw-HWH				
22	249-21	3	Clamp-Slotted				
23	72-9340	1	Cover LH				
24	32128-17	6	Nut-Lock, Flange				



Gear Box Assembly No. 106-4355

Ref	Part No.	Qty.	Description
1	107-2932	1	Cap-Oil
2	107-2933	1	Plug
3	107-2934	2	Seal-Oil
4	107-2935	1	Cap-Oil
5	107-2936	1	Plug-Filler, Dipstick

--	--	--	--



Carrier Frame Assembly

Ref	Part No.	Qty.	Description
1	283-71	2	Pin-Lynch
2	83-4550	1	Frame-Deck Suspension (Incl. Ref. #28 & 29)
3	3290-355	4	Pin-Hair
4	325-32	6	Capscrew Hex Hd W/patch
5	283-55	4	Pin-Clevis
8	93-7819	1	Decal-HOC
10	40-9520	4	Spacer
11	40-0330	2	Cushion-Rubber
12	68-8900	2	Castor Fork
13	68-8960	2	Tire
14	325-19	2	Screw-HH
15	68-8940	2	Hub-Center (Incl. Ref. #18)
16	3256-6	4	Washer-Flat
17	62-5580	4	Bearing-Outside
18	302-61	2	Zerk
19	68-8950	2	Tube-Inner (W/valve)
20	68-8920	2	Female Wheel Half
21	68-8930	2	Male Wheel Half
22	62-5570	2	Bearing-Roller
23	68-8980	2	Spanner-Tire
24	3219-2	8	Nut-Hex
25	3253-4	8	Washer-Lock
26	32153-5	2	Nut-Lock

Ref	Part No.	Qty.	Description
27	3-6781	8	Washer-Thrust
28	94-1291	4	Bushing
29	302-5	2	Fitting-Grease
30	3296-2	4	Nut-Lock
31	42-6200	0	Shim-Cushion
32	32122-28	4	Screw
33	83-4520	2	Cradle-Rear
34	32128-40	6	Nut-Flange
35	66-9302	6	Screw-HHF
36	83-4580	2	Spacer
37	76-3080	1	Lift Arm RH (Incl. Ref. #38 & 39)
	76-3090	1	Lift Arm LH (Incl. Ref. #38 & 39)
38	92-5648	4	Bushing
39	302-62	2	Fitting-Grease
	68-8970	2	Castor Wheel (Incl. Ref. #13, 15,17-22 & 24-25)
	95-3077	1	Kit-Castor Wheel (2)(Incl. Ref. #13-26)

NOTES

NOTES

