



Greensmaster® 3100 2 Wheel Drive

Model No. 04356 - 240000001 and up.

Parts Catalog

Ordering Replacement Parts

To order replacement parts, please supply the part number, the quantity, and the description of each part desired.

Understanding Reference Numbers

Each Identified part in an illustration has a reference number. The reference number for a part also appears in the parts list, along with other information about the part.

This catalog uses two special reference number formats, one to indicate parts in a service assembly and another to indicate the quantity of a given part in an illustration.

Service Assembly Reference Numbers

Parts in service assemblies have reference numbers in the form a:b. The a represents the reference number of the entire service assembly and the b represents a sequential number unique to each part within the service assembly.

For example, a wheel assembly might be identified by reference number 6, the tire by 6:1, the valve by 6:2, and the wheel by 6:3. When you order the assembly identified by reference number 6, you receive all parts identified by reference numbers 6:1, 6:2, and 6:3. However, you may also order any part individually. Reference numbers of this type appear in illustrations and in part lists.

Reference Numbers Indicating Quantity

In an illustration, if a reference number indicates more than one part, the reference number has the form nX y. The n represents the quantity of the part, the X is the multiplication symbol, and the y represents the reference number.

For example, in an illustration, the reference number 2X 37 means that two of the parts identified by reference number 37 are indicated.

Contents

Description	Page	Description	Page
Control Pedal Assembly 4	Crankshaft Assembly Briggs and Stratton Model 350447-1331-E1 40
Traction Controls Assembly 6	Cylinder Head Assembly No. 1 Briggs and Stratton Model 350447-1331-E1 41
Front Wheel and Brake Assembly 7	Cylinder Head Assembly No. 2 Briggs and Stratton Model 350447-1331-E1 42
Hydraulic Wheel Motor Assembly No. 92-9199 8	Intake Manifold and Rocker Cover Assembly Briggs and Stratton Model 350447-1331-E1 43
Steering Arm Assembly 9	Carburetor Assembly Briggs and Stratton Model 350447-1331-E1 44
Power Steering Valve Assembly No. 92-8690 10	Governor Assembly Briggs and Stratton Model 350447-1331-E1 45
Right Hand Pull Frame Assembly 11	Alternator Assembly Briggs and Stratton Model 350447-1331-E1 46
Hydraulic Cylinder Assembly No. 106-9066 13	Fuel Pump, Oil Pump and Dipstick Assembly Briggs and Stratton Model 350447-1331-E1 47
Left Hand Pull Frame Assembly 14	Air Cleaner Assembly Briggs and Stratton Model 350447-1331-E1 48
Rear Pull Frame Assembly 15	Blower Housing Assembly Briggs and Stratton Model 350447-1331-E1 49
Hydraulic Cylinder Assembly No. 106-9064 17	Flywheel Assembly Briggs and Stratton Model 350447-1331-E1 50
Seat Assembly 18	Starter Assembly Briggs and Stratton Model 350447-1331-E1 51
Control Valve Installation Assembly 19	Starter Assembly Briggs and Stratton Model 350447-1331-E1 52
Control Valve Assembly No. 105-3800 21	Gasket Assembly Briggs and Stratton Model 350447-1331-E1 53
Section 1 Assembly No. 105-3801 22	Carburetor Overhaul Kit Assembly Briggs and Stratton Model 350447-1331-E1 54
Section 2 Assembly No. 105-3802 23		
Section 3 Assembly No. 105-3803 24		
Section 4 Assembly No. 105-3804 25		
Section 5 Assembly No. 93-1386 26		
Engine Installation Assembly 27		
Hydraulic Pump Installation Assembly 28		
Frame Assembly 29		
Rear Wheel Assembly 31		
Hydraulic Cylinder Assembly No. 83-2330 32		
Control Panel Assembly 33		
Hydraulic Reservoir Assembly 34		
Fuel Tank Assembly 35		
Reel Motor Installation Assembly 36		
Hydraulic Motor Assembly No. 105-9770 37		
Electrical Schematic 38		
Cylinder Assembly Briggs and Stratton Model 350447-1331-E1 39		

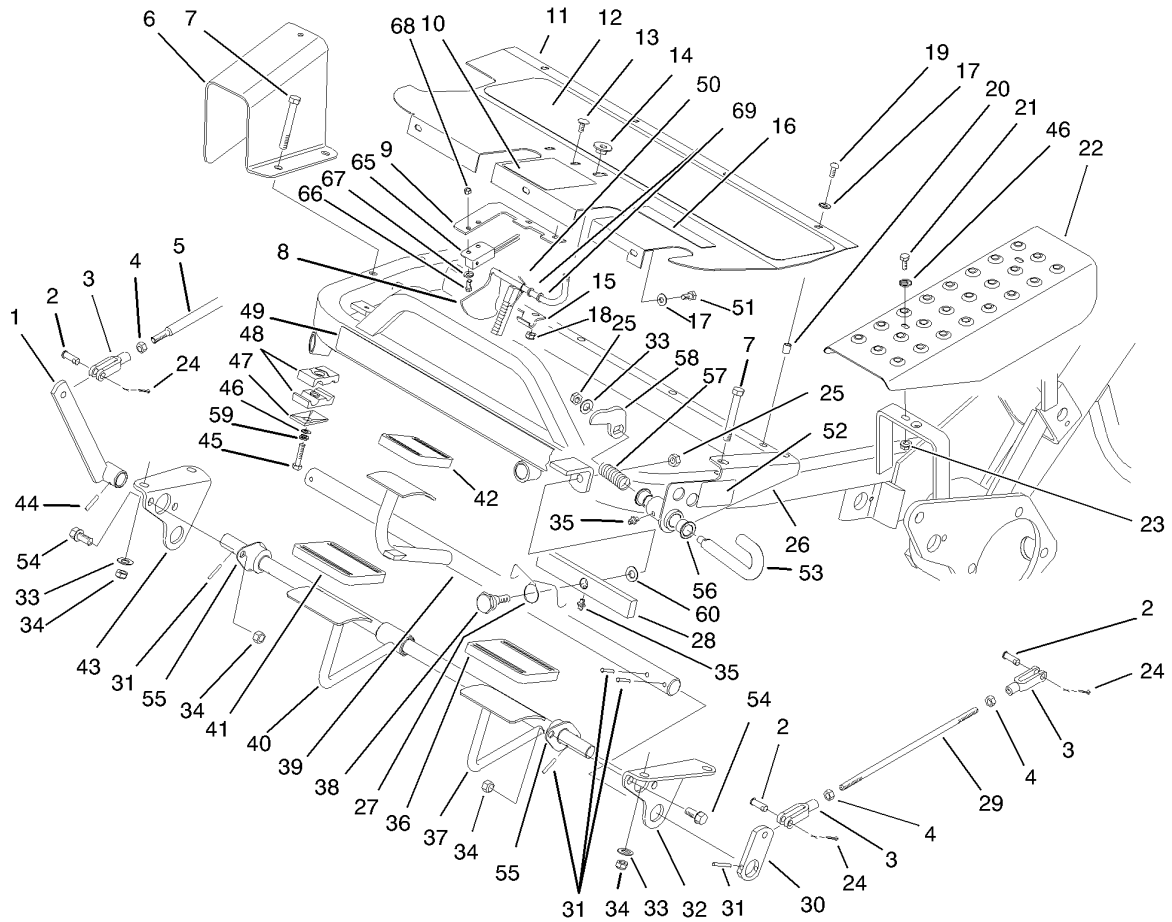
Part Description Abbreviations

Part descriptions in this catalog may include the following abbreviations.

AR.	as required	INC.	incorporated
ASM.	assembly	LH.	left hand
CARR.	carriage	NI.	nylon insert
DEG.	degrees	PPH.	phillips pan head
FH.	flat head	PTH.	phillips truss head
GA.	gauge	PTO.	power take off
HF.	hex flange	RH.	right hand
HH.	hex head	SFH.	slotted fillister head
HHF.	hex head flange	SHH.	slotted hex head
HHFTF.	hex head flange thread forming	SHWH.	slotted hex washer head
HJ.	hex jam	SPH.	slotted pan head
HLH.	hex lag head	SQH.	square head
HOC.	height-of-cut	SRH.	slotted round head
HS.	hex	STD.	standard
HSBH.	hex socket button head	TAP.	self tapping
HSFH.	hex socket flat head	TTH.	torx truss head
HSH.	hex socket head	WH.	wing head
HWH.	hex washer head		
HWHTF.	hex washer head thread forming		
HYD.	hydraulic		

Footnotes

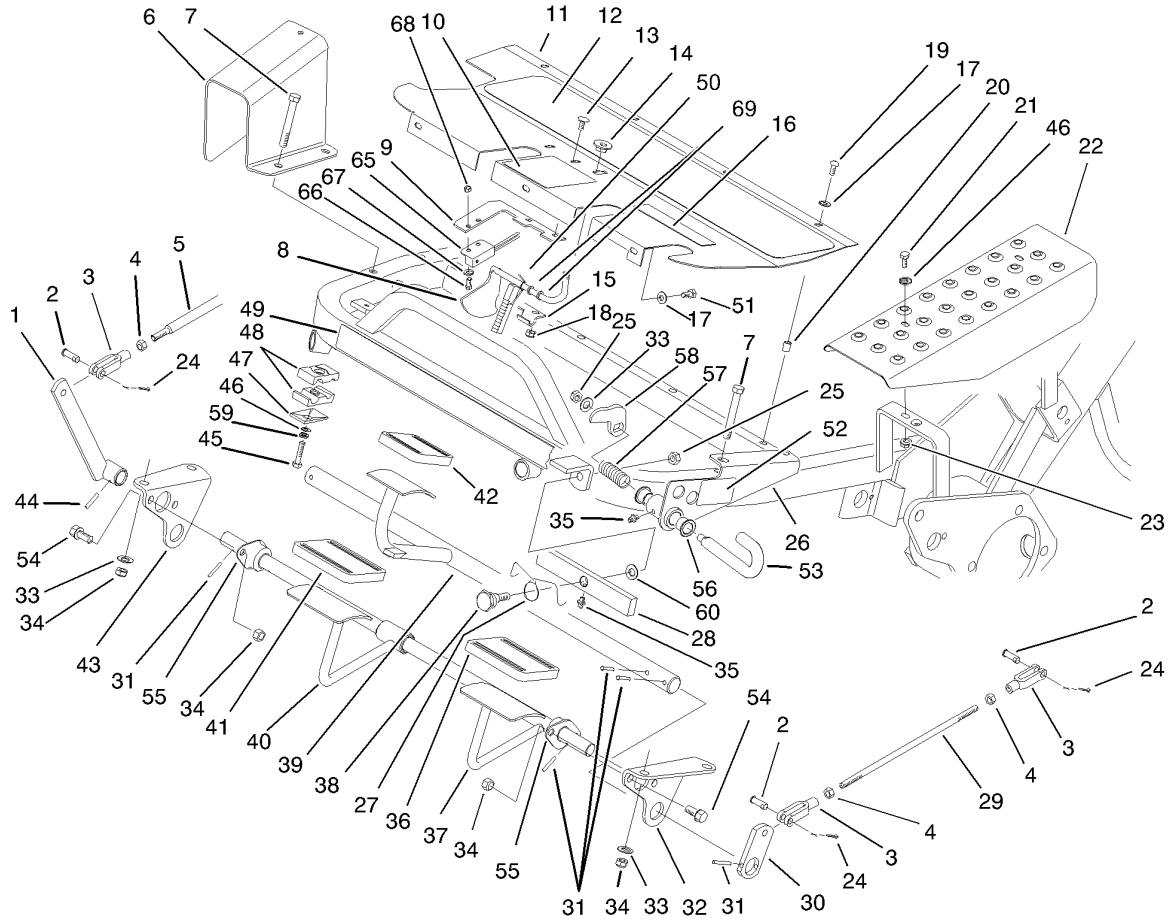
- | | | | |
|---|---|---|--|
| ❶ | Not illustrated | ❷ | Not serviced separately |
| ❸ | Included in Engine Gasket Set-Ref. 358. | ❹ | Included in Valve Gasket Set-Ref. 1095. |
| ❺ | Included in Carburetor Overhaul Kit-Ref. 121. | ❻ | Included in Valve Overhaul Gasket Set-Ref. 1095. |
| ❻ | Obtain parts from your local Briggs and Stratton dealer | | |



Control Pedal Assembly

Ref	Part No.	Qty.	Description
1	49-6200-01	1	Lever-Cutting
2	283-61	5	Pin-Yoke
3	282-2	5	Yoke
4	3220-2	5	Nut
5	49-5430	1	Rod-Control
6	49-6110-01	1	Guard
7	323-13	4	Screw-HH
8	100-9819	1	Latch ASM
9	100-9821	1	Plate-Switch, Reed
10	93-8062	1	Decal-Brake, Parking
11	83-0640-01	1	Plate-Footrest
12	49-6120	1	Pad-Footrest
13	3229-11	2	Screw-CARR
14	32141-111	1	Nut-Adjusting
15	95-1629	1	Hinge-Lower
16	93-8075	1	Decal-Mow/lift
17	3256-1	7	Washer-Flat
18	3296-16	2	Nut-Lock, NI
19	3274-31	4	Screw-HSBH
20	32148-6	8	Insert-Nut
21	321-4	2	Screw-HH
22	83-0200-01	1	Plate-Cover, LH
23	32128-33	2	Nut-HF
24	3272-6	5	Pin-Cotter

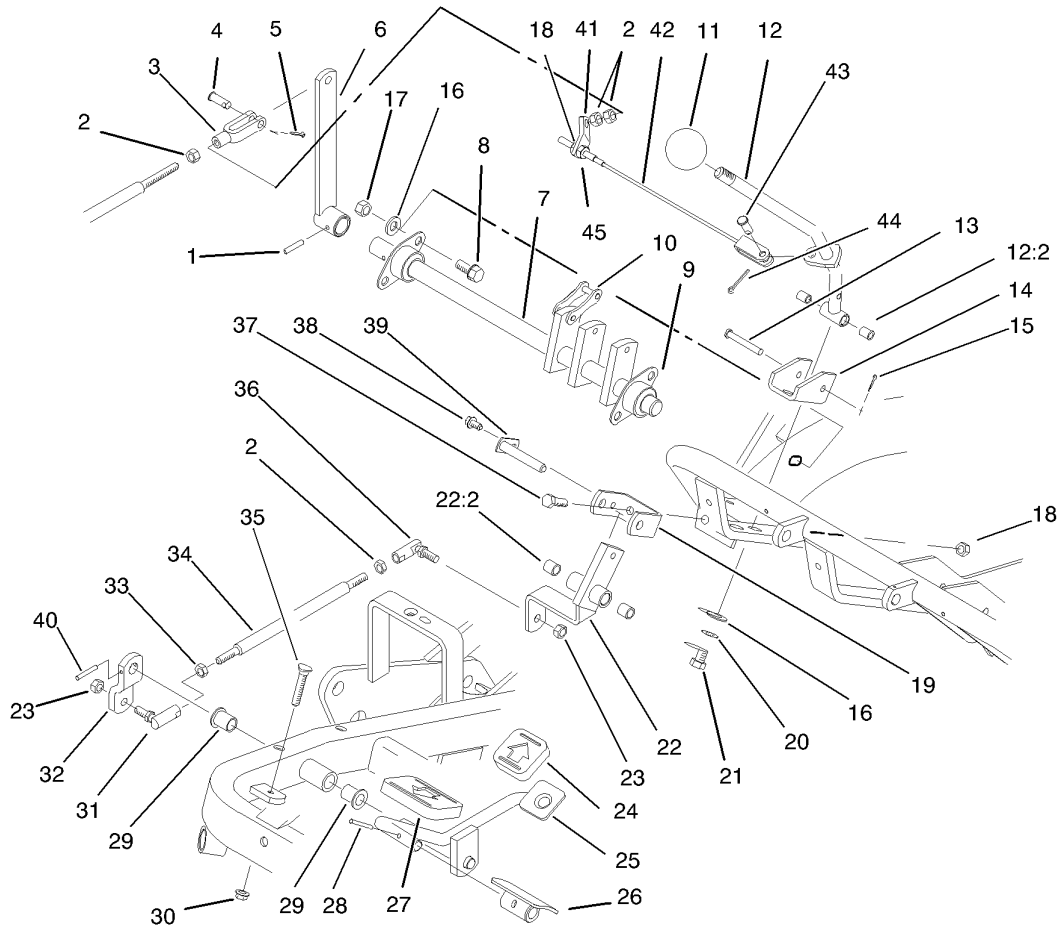
Ref	Part No.	Qty.	Description
25	3296-39	2	Nut-Lock, NI
26	93-9901-01	1	Bracket-Lockout, Mow
27	83-0080	1	Spring-Pivot, Lift
28	106-6396	1	Lift-Pivot
29	27-2270	2	Rod-Adjustment, Brake
30	10-8100-01	2	Strap-Shaft, Brake
31	32121-35	8	Pin-Roll
32	88-9640-01	1	Bracket-Lift Pivot, LH
33	3256-24	5	Washer-Flat
34	3296-59	8	Nut-Lock, NI
35	302-5	2	Fitting-Grease
36	93-7631	1	Pad-Foot, Lift
37	106-6395	1	Cutting Control Shaft ASM
38	83-2590	1	Bolt-Shoulder, Pivot
39	83-0160	1	Shaft-Brake
40	106-6394	1	Mow Pedal ASM
41	93-7630	1	Pad-Foot
42	93-7629	1	Pad-Foot, Brake
43	88-9630-01	1	Bracket-Lift Pivot, RH
44	32121-6	1	Pin-Roll
45	321-11	1	Screw-HH
46	3256-22	3	Washer-Flat
47	69-9760	1	Coverplate
48	56-7970	2	Clamp-Tube



Control Pedal Assembly (continued)

Ref	Part No.	Qty.	Description
49	88-9620	1	Decal
50	10-8140	1	Spring-Latch, Brake
51	321-3	3	Screw-HH
52	93-9898	1	Decal-Lock
53	93-9903	1	Pin-Mow, Lockout
54	3234-1	4	Screw-HHF
55	27-2320	2	Bearing
56	3-1506	2	Bushing
57	76-0410	1	Spring-Compression
58	93-9904	1	Arm-Mow, Lockout
59	3253-3	1	Washer-Lock
60	80-7730	1	Spacer
65	104-2057	1	Sensor
66	48-7620	2	Screw-HH
67	33093-00	2	Washer-Flat
68	49-7810	2	Nut-Lock
69	75-5470	2	Spacer-Bearing
●99	93-6691	3	Decal-Bolt, Eccentric

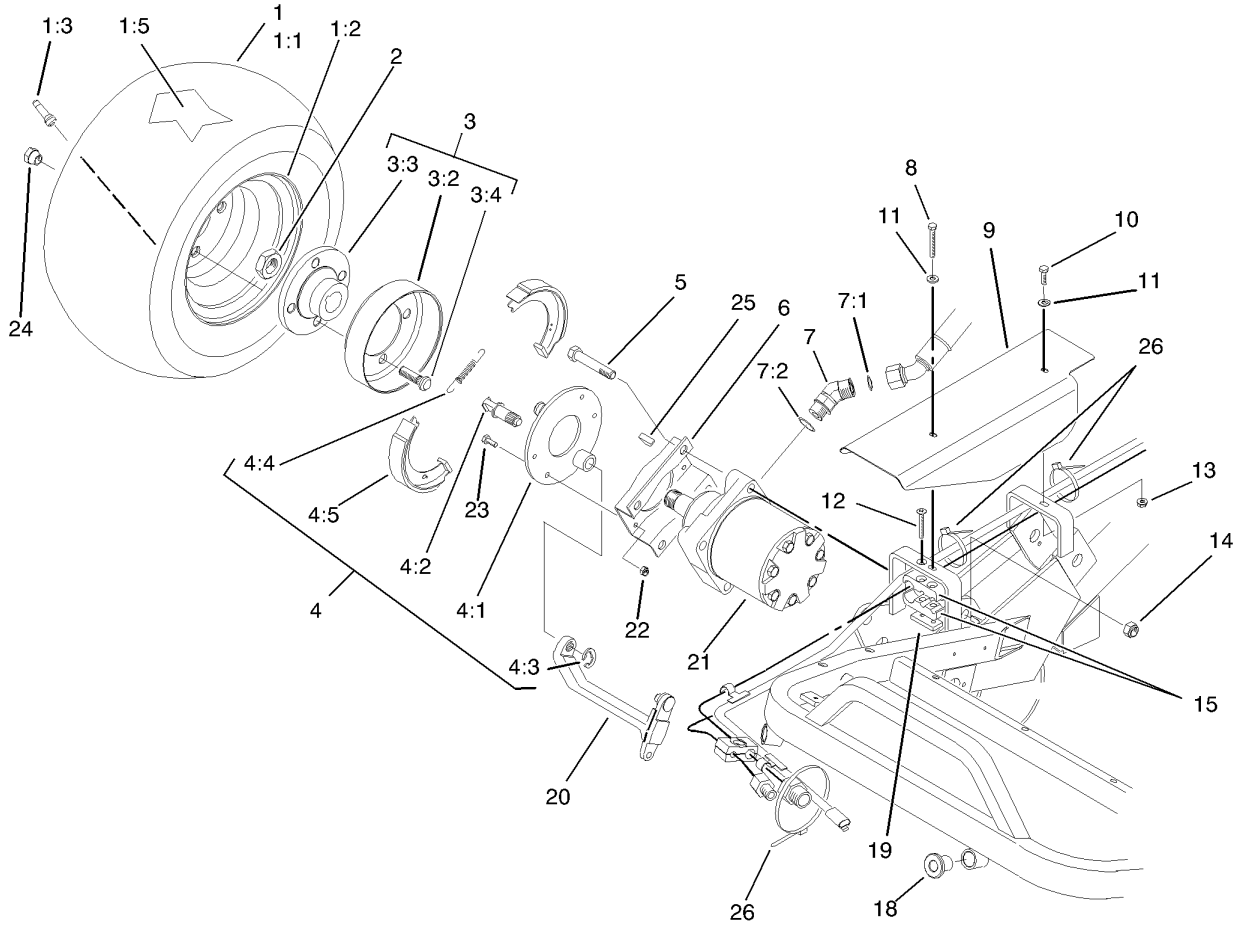
--	--	--	--



Traction Controls Assembly

Ref	Part No.	Qty.	Description
1	32121-6	1	Pin-Roll
2	3220-2	4	Nut
3	282-2	1	Yoke
4	283-61	1	Pin-Yoke
5	3272-6	1	Pin-Cotter
6	47-5320-01	1	Lever
7	44-0870	1	Cam Shaft ASM
8	3234-1	4	Screw-HHF
9	27-2320	2	Bearing
10	57-6220	5	Link-Connecting
11	233-48	1	Knob
12	93-9934	1	Handle-Traction
12:2	256-251	2	Bushing
13	283-57	1	Pin
14	49-6220	1	Bracket-Arm, Control
15	3272-4	1	Pin-Cotter
16	3256-24	6	Washer-Flat
17	3296-59	4	Nut-Lock, NI
18	3296-29	3	Nut-Lock, NI
19	49-6250	1	Bracket-Pivot
20	3254-6	2	Washer-Lock, Internal
21	3211-2	2	Screw-HH
22	49-6260	1	Pivot ASM
22:2	256-2	2	Bushing

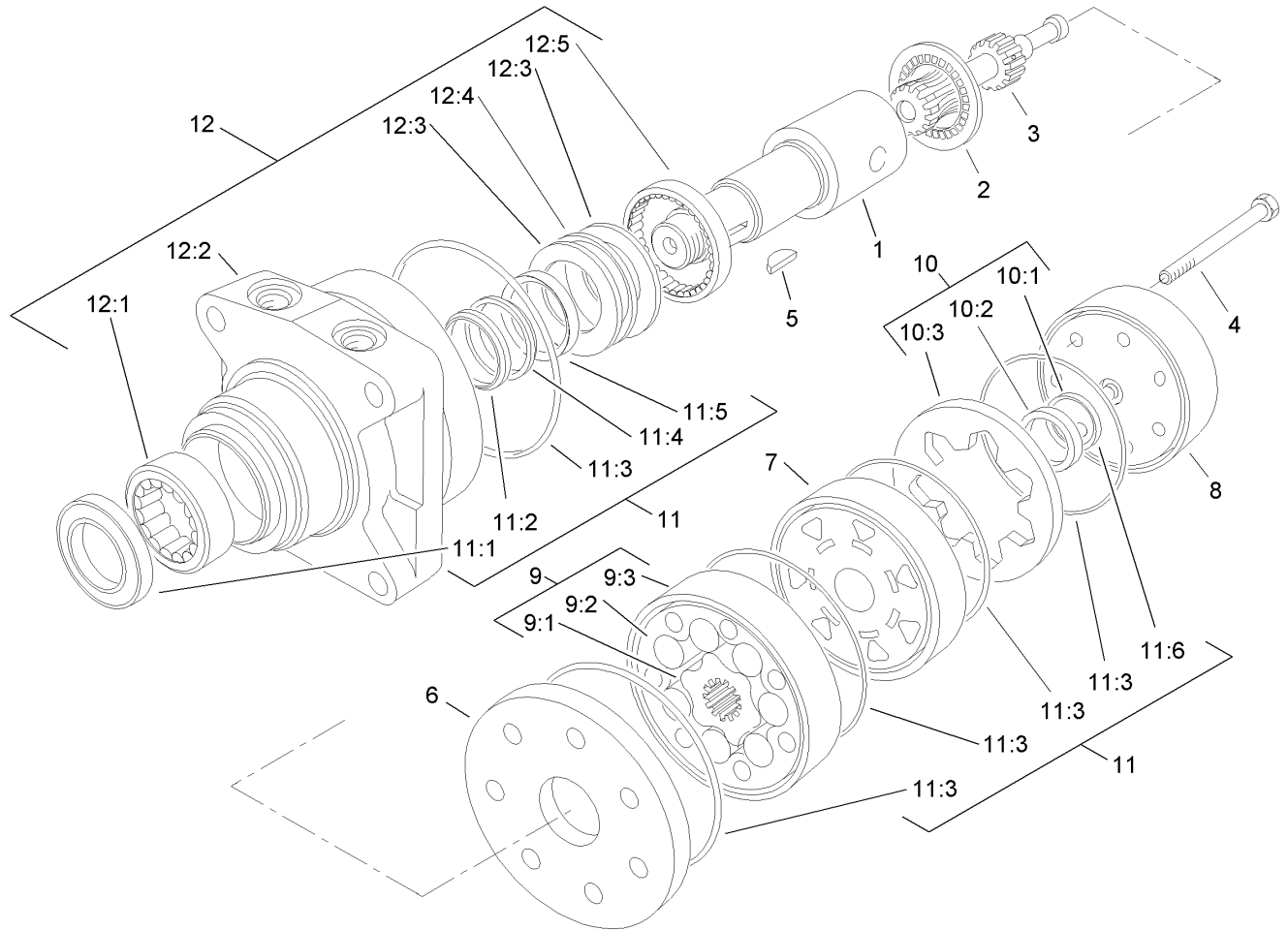
Ref	Part No.	Qty.	Description
23	3296-4	2	Nut-Lock, NI
24	74-9110	1	Pad-Pedal, Reverse
25	83-0540-01	1	Traction Pedal ASM
26	49-6440-03	1	Pedal-Forward
27	74-9100	1	Pad-Pedal, Forward
28	32121-45	1	Pin-Spring
29	256-155	2	Bushing-Flange
30	32128-20	1	Nut-HF
31	2411-42	1	Joint-Ball, LH
32	83-0630	1	Arm-Pivot, Traction
33	3220-20	1	Nut-Jam
34	83-0580	1	Rod-Control, Traction
35	17-9420	1	Screw-Handle
36	2411-43	1	Joint-Ball
37	322-5	2	Screw-HH
38	12-3270	1	Screw
39	49-6290	1	Pivot Shaft ASM
40	32121-51	1	Pin-Roll
41	93-9936	1	Bracket-Return, Traction
42	93-9937	1	Traction Cable ASM
43	283-62	1	Pin-Clevis
44	3272-10	1	Pin-Cotter
45	3217-6	1	Nut-Hex



Front Wheel and Brake Assembly

Ref	Part No.	Qty.	Description
1		2	Wheel And Tire ASM
1:1	28-3680	1	Tire
1:2	217-60	1	Rim
1:3	232-27	1	Stem-Valve
1:5	232-37	1	Tube
2	26-3790	2	Nut-Lock
3	10-6821	2	Brake Drum ASM
3:2	10-6850	1	Drum-Brake
3:3	10-6870-03	1	Hub-Wheel
3:4	85-6540	4	Stud-Drive
4	104-7705	2	Brake ASM
4:1	70-9870	1	Plate-Backing
4:2	104-7707	1	Shaft-Cam, Brake
4:3	104-7706	1	E Ring-Bowed
4:4	70-9880	2	Spring-Return
4:5	70-9840	2	Shoe-Brake
5	325-11	8	Screw-HH
6	84-2000-03	2	Bracket-Brake
7	340-14	4	Fitting-Hyd, 45 DEG
7:1	237-65	1	O-Ring
7:2	237-80	1	O-Ring
8	321-11	1	Screw-HH
9	83-0190-01	1	Cover-RH
10	321-4	1	Screw-HH

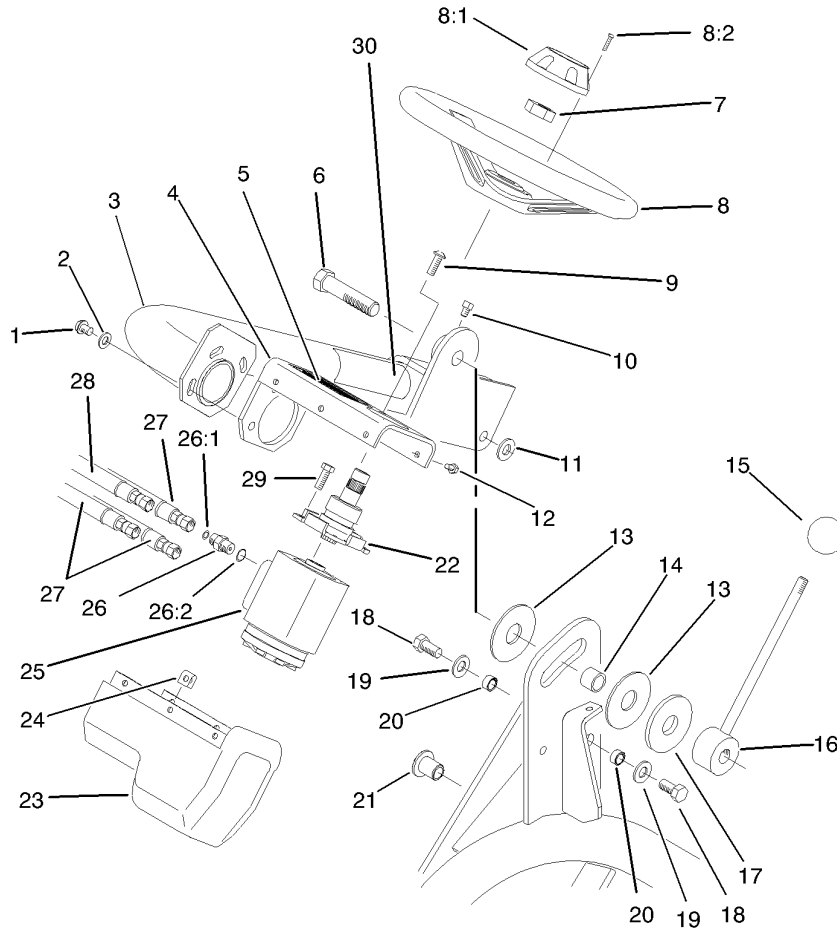
Ref	Part No.	Qty.	Description
11	3256-22	2	Washer-Flat
12	32108-100	1	Screw-FH
13	32128-33	1	Nut-HF
14	3296-23	8	Nut-Lock, NI
15	57-6140	2	Clamp-Tube, Half
18	83-1700	2	Bushing-Flange
19	83-1220	1	Plate-Clamp
20	93-2096	2	Lever-Brake
21	92-9199	2	Motor-Wheel, HYD
22	3296-42	8	Nut-Lock, NI
23	321-5	8	Screw-HH
24	242-50	8	Nut-Lug
25	3257-42	2	Key-Woodruff
26	3290-378	3	Tie-Cable



Hydraulic Wheel Motor Assembly No. 92-9199

Ref	Part No.	Qty.	Description
1	76-0860	1	Shaft-Coupling
2	76-0850	1	Bearing-Thrust
3	92-9761	1	Link-Drive
4	92-9762	7	Screw-HH
5	3257-42	1	Key-Woodruff
6	76-0870	1	Plate-Wear
7	76-0840	1	Manifold
8	76-0940	1	End Cover ASM
9	92-9763	1	Rotor Set
●9:1		1	Rotor
●9:2		1	Vane
●9:3		1	Stator
10	76-0880	1	Commutator ASM
●10:1		1	Seal-Commutator
●10:2		1	Commutator
●10:3		1	Ring-Commutator
11	94-8178	1	Seal Kit
●11:1		1	Seal-Dirt & Water
●11:2		1	Washer-Backup
●11:3		5	Seal-Ring
●11:4		1	Washer-Backup
●11:5		1	Seal-Inner
●11:6		1	Seal-Commutator
12	76-0810	1	Housing ASM

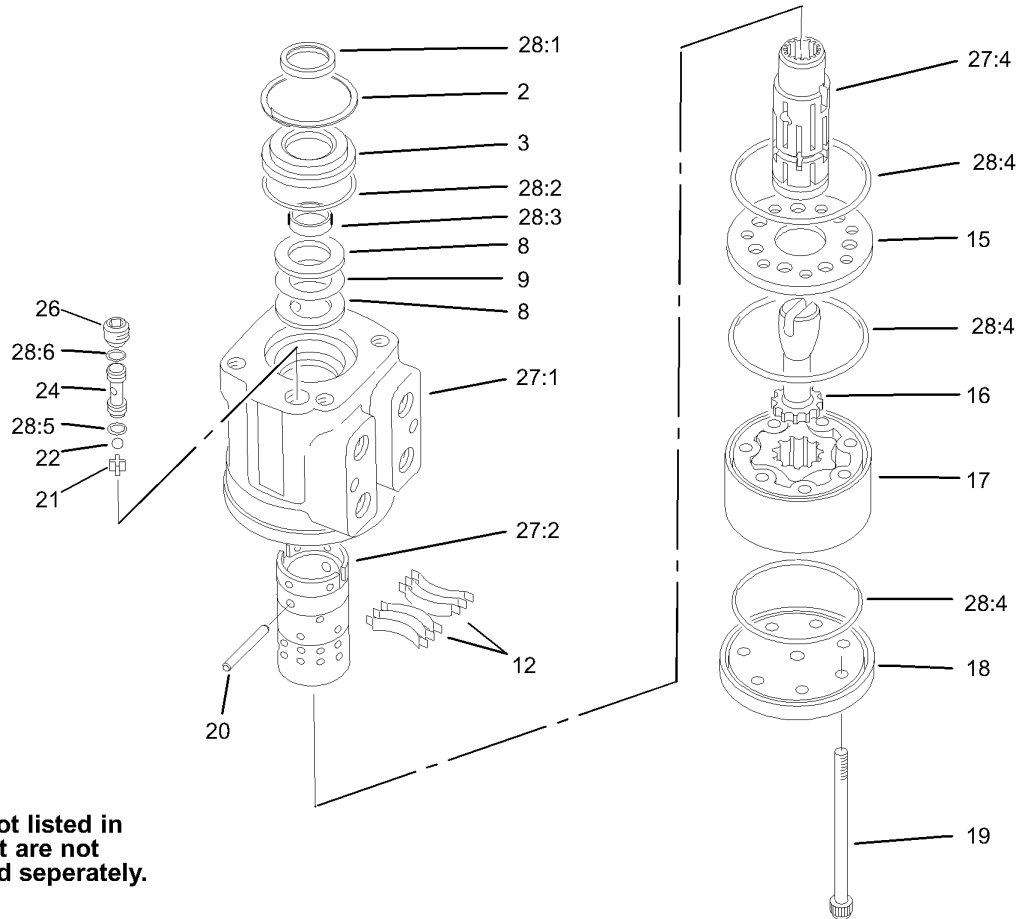
Ref	Part No.	Qty.	Description
●12:1		1	Bearing
●12:2		1	Housing
●12:3		2	Washer-Thrust
●12:4		1	Bearing-Thrust
●12:5		1	Bearing



Steering Arm Assembly

Ref	Part No.	Qty.	Description
1	3274-80	3	Screw-HH
2	3256-80	3	Washer-Flat
3	83-0650-01	1	Arm-Steering
4	83-0780-03	1	Support-Valve, Steering
5	93-8063	1	Decal-Caution, Ce
5	104-2053	1	Decal-Warning
6	83-0750	1	Capscrew-Hh, LH Thread
7	107-2561	1	Nut-Hex
8	68-5130	1	Wheel-Steering
8:1	68-5140	1	Cap-Wheel, Steering
8:2	32144-21	1	Screw
9	3274-63	2	Screw-HSBH
10	3242-2	1	Screw-SQH
11	65-6390	1	Washer-Thrust, Plain
12	3274-39	6	Screw-HSBH
13	83-0740	2	Disc-Friction
14	83-0730	1	Spacer-Lockup
15	233-48	1	Knob
16	83-0700-03	1	Handle-Lockup
17	83-0760	1	Spacer-Plate, Lockup
18	325-4	2	Screw-HH
19	3256-26	2	Washer-Flat
20	47-2890	2	Bushing
21	83-1700	1	Bushing-Flange

Ref	Part No.	Qty.	Description
22	83-1420	1	Column-Steering
23	83-0810	1	Cover-Steering
24	3290-277	6	Nut-Speed
25	92-8690	1	Steering Control Valve ASM
26	340-1	4	Adapter
26:1	237-21	1	O-Ring
26:2	237-42	1	O-Ring
27	83-1350	3	Hose-HYD
28	83-1360	1	Hose-HYD
29	323-4	2	Screw-HH
30	93-8068	1	Decal-Arm, Steering

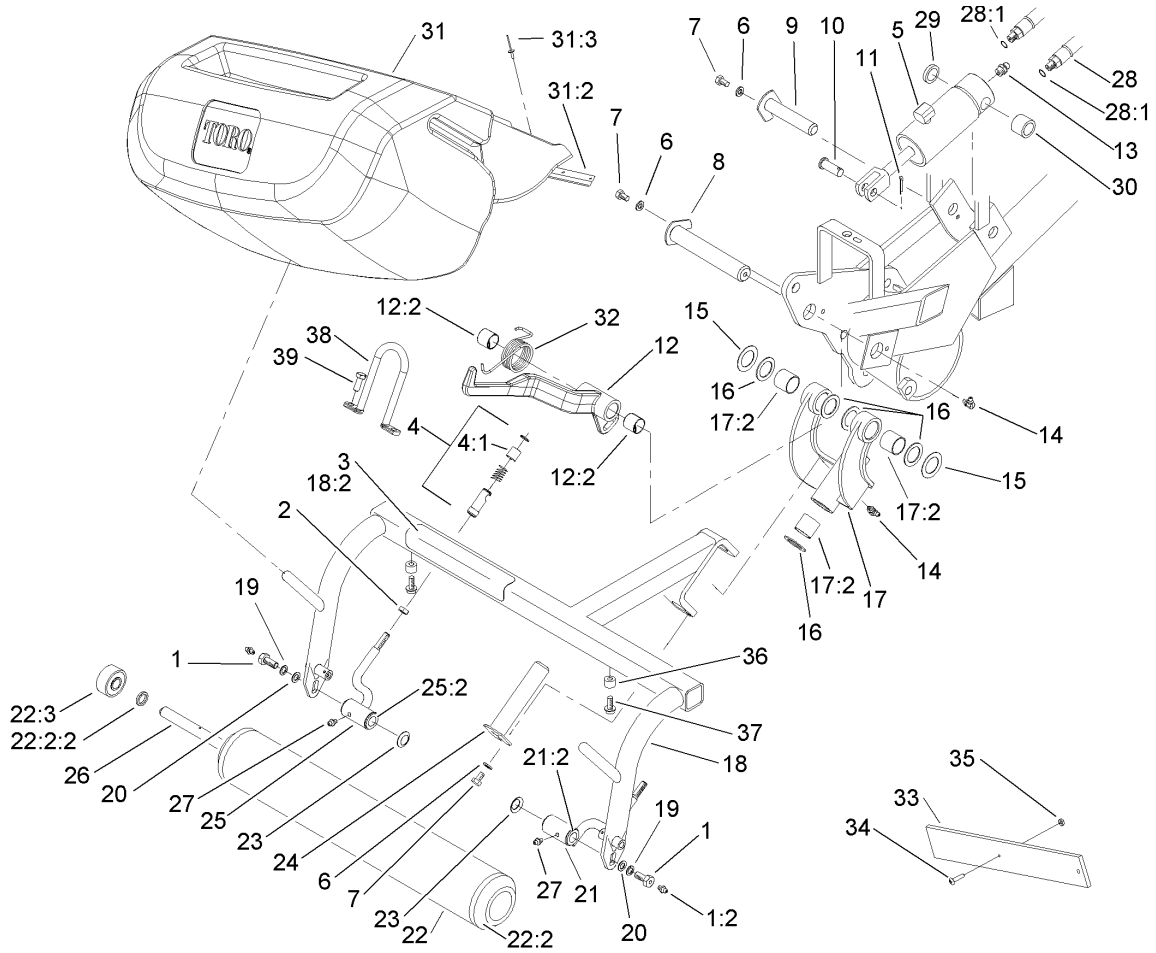


Parts not listed in partslist are not serviced separately.

Power Steering Valve Assembly No. 92-8690

Ref	Part No.	Qty.	Description
2	52-9230	1	Ring-Retaining
3	92-8691	1	Bushing
8	59-6730	2	Race
9	59-6740	1	Bearing
12	83-1860	1	Kit-Centering, Spring
15	92-8697	1	Plate-Wear
16	70-8250	1	Drive
17	83-1870	1	Gerotor Sub ASM
18	92-8694	1	Cap-End
19	92-8696	7	Screw-Head, Torx
20	59-6830	1	Centering Pin Kit
21	52-9290	1	Retainer-Checkball
22	52-9280	1	Checkball
24	52-9270	1	Seat-Checkball
26	52-9260	1	Screw-Set
27	83-1880	1	Control Parts ASM
27:1		1	Housing
27:2		1	Sleeve-Control
27:4		1	Spool-Control
28	92-9749	1	Seal Kit
28:1		1	Seal-Dust
28:2		1	O-Ring
28:3		1	O-Ring
28:4		3	O-Ring

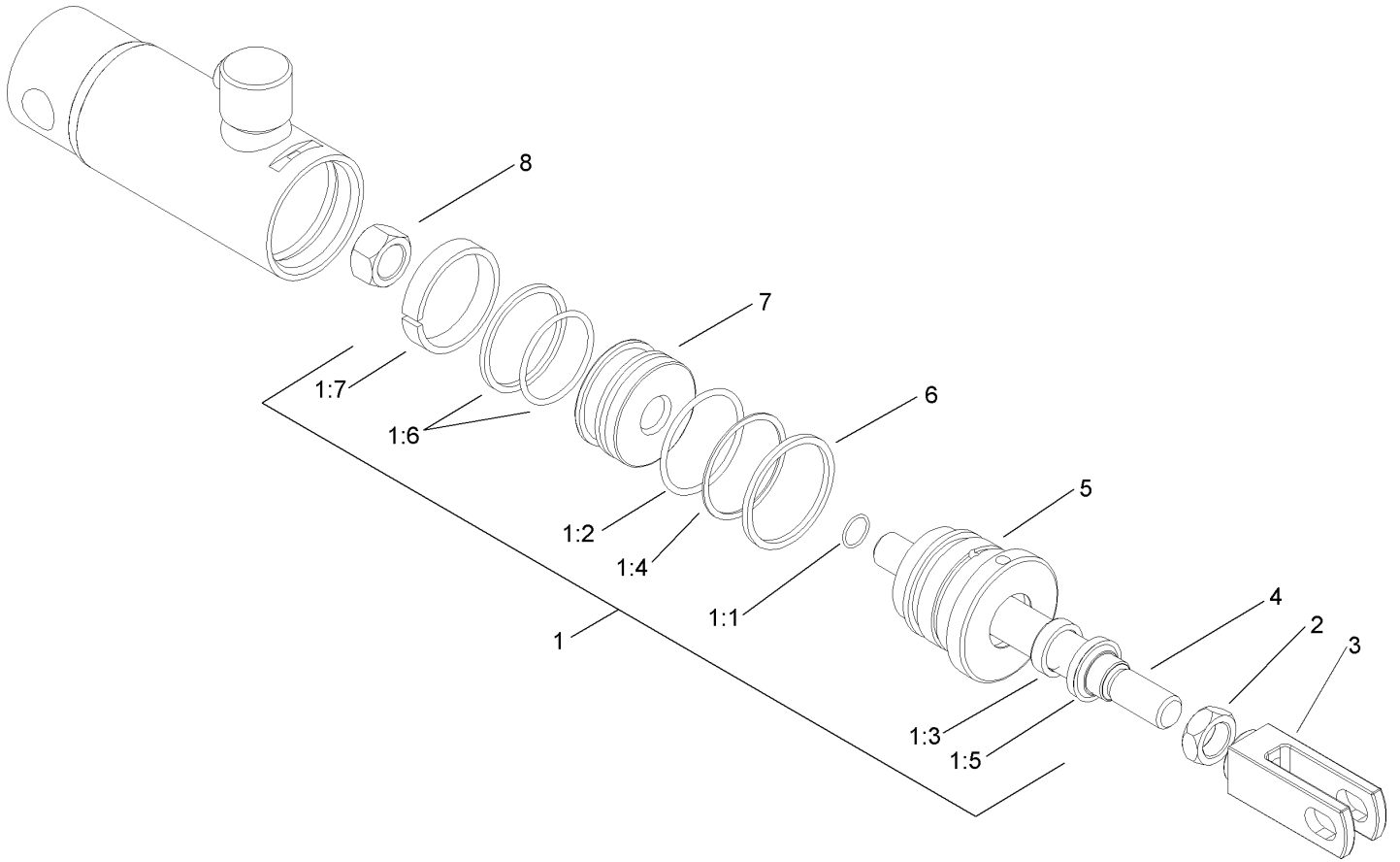
Ref	Part No.	Qty.	Description
28:5		1	O-Ring
28:6		1	O-Ring



Right Hand Pull Frame Assembly (continued)

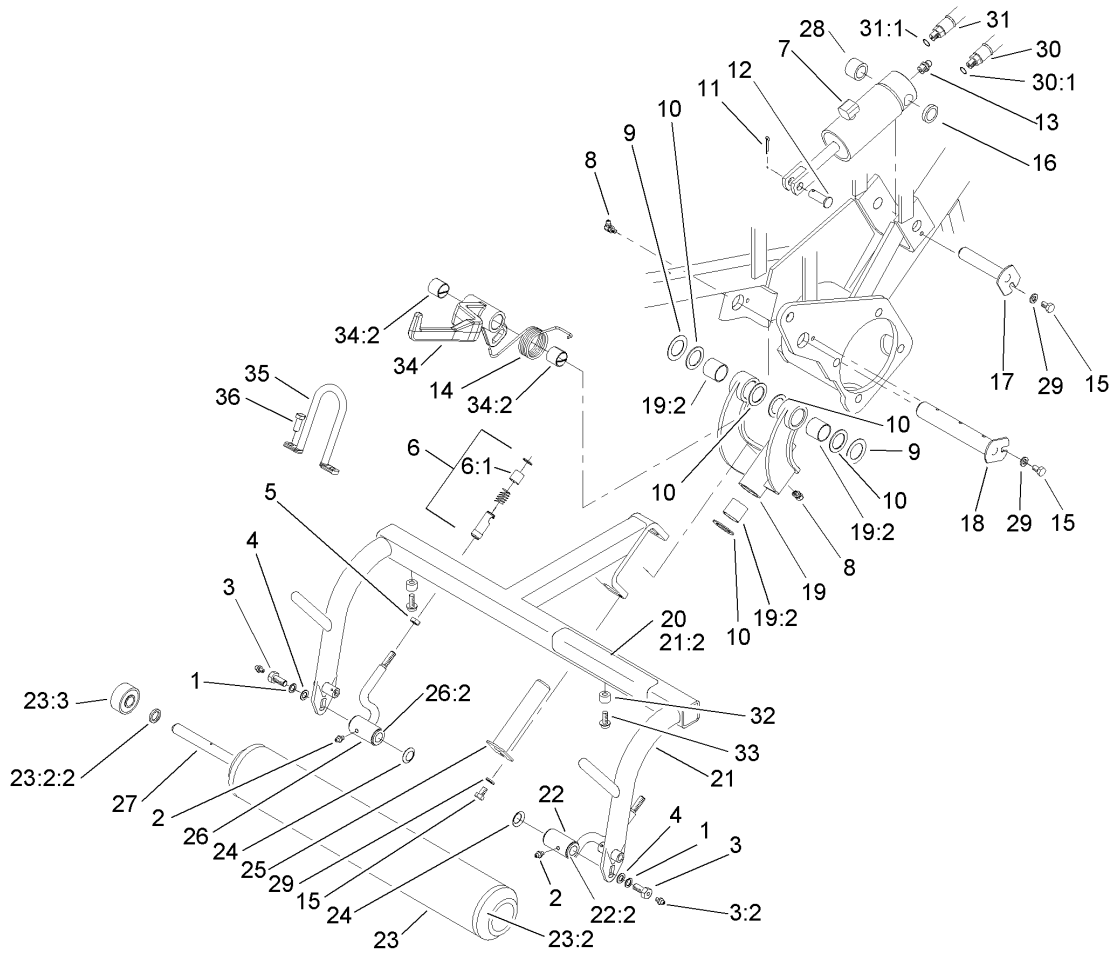
Ref	Part No.	Qty.	Description
36	94-4548	2	Bumper-Recessed
37	32144-44	2	Screw-HWH
38	105-5740	1	Hook-Lift
39	33115-025	2	Screw-HH

--	--	--	--



Hydraulic Cylinder Assembly No. 106-9066

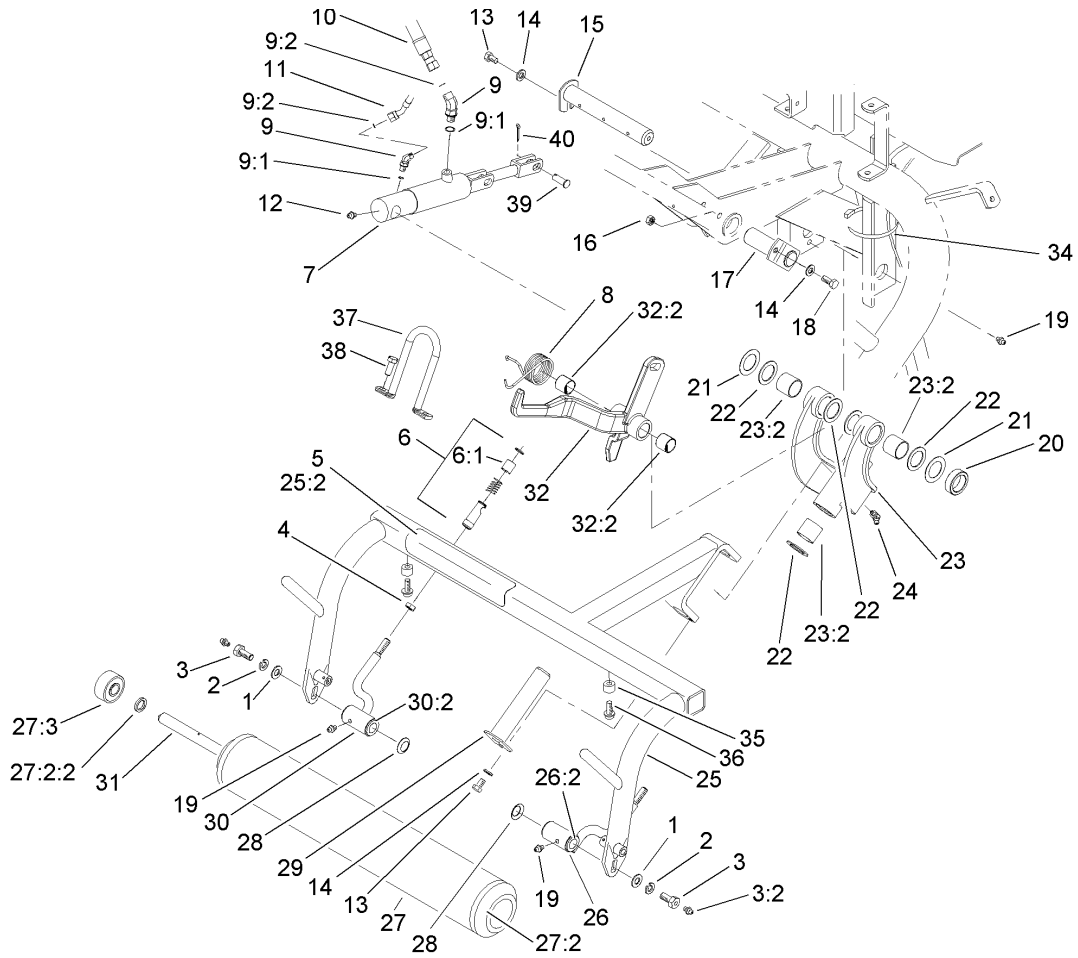
Ref	Part No.	Qty.	Description				
1	107-2564	1	Seal Kit				
②1:1		1	O-Ring				
②1:2		1	O-Ring				
②1:3		1	Seal				
②1:4		1	Back-Up				
②1:5		1	Wiper				
②1:6		1	Seal W/o-Ring				
②1:7		1	Ring-Wear				
2	3220-6	1	Nut-Jam				
3	106-9065	1	Clevis-Cylinder				
②4		1	Rod				
②5		1	Head				
②6		1	Ring-Retaining				
②7		1	Piston				
②8		1	Locknut				



Left Hand Pull Frame Assembly

Ref	Part No.	Qty.	Description
1	3253-21	2	Washer-Lock
2	302-5	2	Fitting-Grease
3	11-0160	2	Roller Shaft Screw ASM
3:2	302-5	1	Fitting-Grease
4	3256-24	2	Washer-Flat
5	3220-3	2	Nut-Jam
6	99-1460	2	Ball Joint Receiver ASM
6:1	99-1461	1	Sleeve-Joint, Ball
7	106-9066	1	HYD Cylinder ASM
8	302-60	2	Fitting-Grease
9	5-1226	2	Washer
10	10-8110	6	Washer-Thrust
11	3272-11	1	Pin-Cotter
12	283-8	1	Pin-Clevis
13	302-2	1	Fitting-Grease
14	106-9079	1	Spring-Torsion, LH
15	322-1	3	Screw-HH
16	105-3828	1	Spacer
17	10-6060	1	Pin-Pivot, Ram
18	10-6110	1	Pin-Hinge
19	10-7820	1	Pivot Hinge ASM
19:2	3-0348	4	Bushing
20	93-8064	1	Decal-Danger, Ce
21	104-2054	1	Left Pull Frame ASM

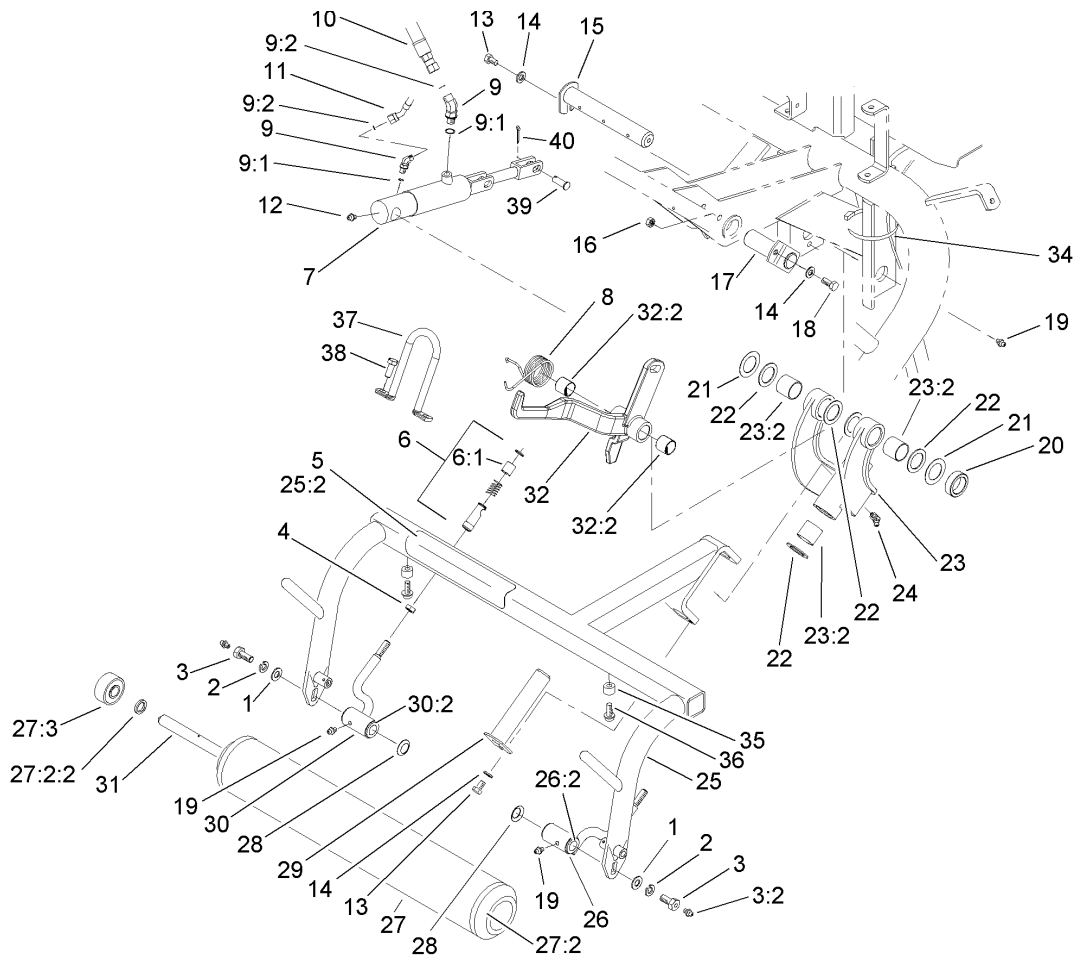
Ref	Part No.	Qty.	Description
21:2	62-5070	1	Decal-Warning
22	92-0586	1	Pull Arm ASM
22:2	3-1506	2	Bushing
23	99-4277	1	Roller ASM
23:2		2	Hub Yoke ASM
23:2:2	253-83	1	Seal-Oil
23:3	251-141	2	Bearing-Ball
24	3290-317	2	Washer-Spring
25	10-6090	1	Pin-Pivot
26	92-0585	1	Pull Arm ASM
26:2	3-1506	2	Bushing
27	21-8470	1	Shaft-Roller
28	74-3730	1	Spacer-Spindle, Rear
29	3256-23	3	Washer-Flat
30	83-1690	1	Hose-HYD
30:1	237-78	1	O-Ring
31	63-3850	1	Hose ASM
31:1	237-78	1	O-Ring
32	94-4548	2	Bumper-Recessed
33	32144-44	2	Screw-HWH
34	107-2598	1	LH Lift Arm ASM
34:2	3-0348	2	Bushing
35	105-5740	1	Hook-Lift
36	33115-025	2	Screw-HH



Rear Pull Frame Assembly

Ref	Part No.	Qty.	Description
1	3256-24	2	Washer-Flat
2	3253-21	2	Washer-Lock
3	11-0160	2	Roller Shaft Screw ASM
3:2	302-5	1	Fitting-Grease
4	3220-3	2	Nut-Jam
5	93-8064	1	Decal-Danger, Ce
6	99-1460	2	Ball Joint Receiver ASM
6:1	99-1461	1	Sleeve-Joint, Ball
7	106-9064	1	HYD Cylinder ASM
8	106-9080	1	Spring-Torsion, Center
9	340-103	2	Fitting-Hyd, 45 DEG
9:1	237-78	1	O-Ring
9:2	237-21	1	O-Ring
10	83-1680	1	Hose-HYD
11	88-9700	1	Hose-HYD
12	302-2	1	Fitting-Grease
13	322-1	2	Screw-HH
14	3256-23	3	Washer-Flat
15	27-2550	1	Pin-Hinge
16	3296-29	1	Nut-Lock, NI
17	68-5560	1	Pin-Cylinder, Pivot
18	322-3	1	Screw-HH
19	302-5	3	Fitting-Grease
20	93-2384	1	Spacer-Carrier

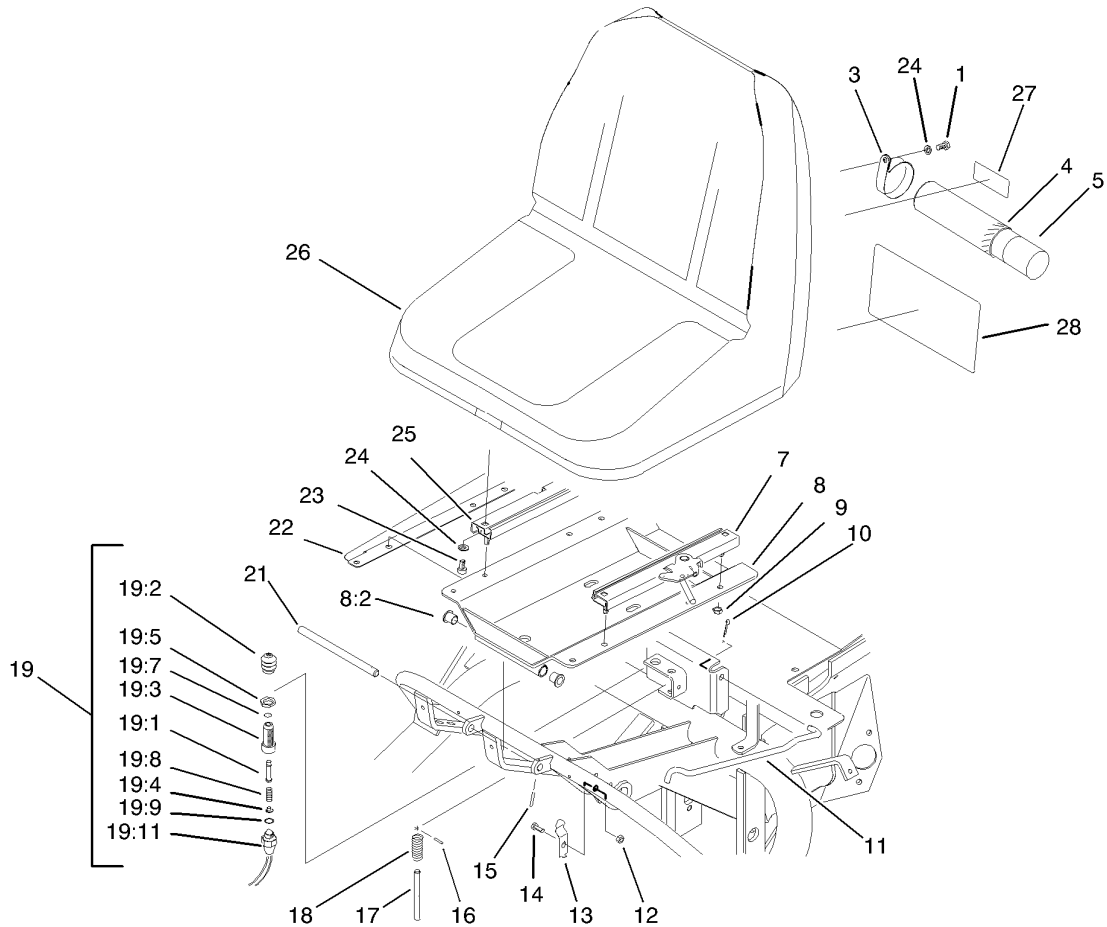
Ref	Part No.	Qty.	Description
21	5-1226	2	Washer
22	10-8110	6	Washer-Thrust
23	105-0452	1	Pivot Hinge ASM
23:2	3-0348	4	Bushing
24	302-60	1	Fitting-Grease
25	105-0451	1	Rear Pull Frame ASM
25:2	62-5070	1	Decal-Warning
26	92-0586	1	Pull Arm ASM
26:2	3-1506	2	Bushing
27	99-4277	1	Roller ASM
27:2		2	Hub Yoke ASM
27:2:2	253-83	1	Seal-Oil
27:3	251-141	2	Bearing-Ball
28	3290-317	2	Washer-Spring
29	10-6090	1	Pin-Pivot
30	92-0585	1	Pull Arm ASM
30:2	3-1506	2	Bushing
31	21-8470	1	Shaft-Roller
32	107-9500	1	Center Lift Arm ASM
32:2	3-0348	2	Bushing
34	3290-379	1	Tie-Cable
35	94-4548	2	Bumper-Recessed
36	32144-44	2	Screw-HWH
37	105-5740	1	Hook-Lift



Rear Pull Frame Assembly (continued)

Ref	Part No.	Qty.	Description
38	33115-025	2	Screw-HH
39	283-8	1	Pin-Clevis
40	3272-11	1	Pin-Cotter

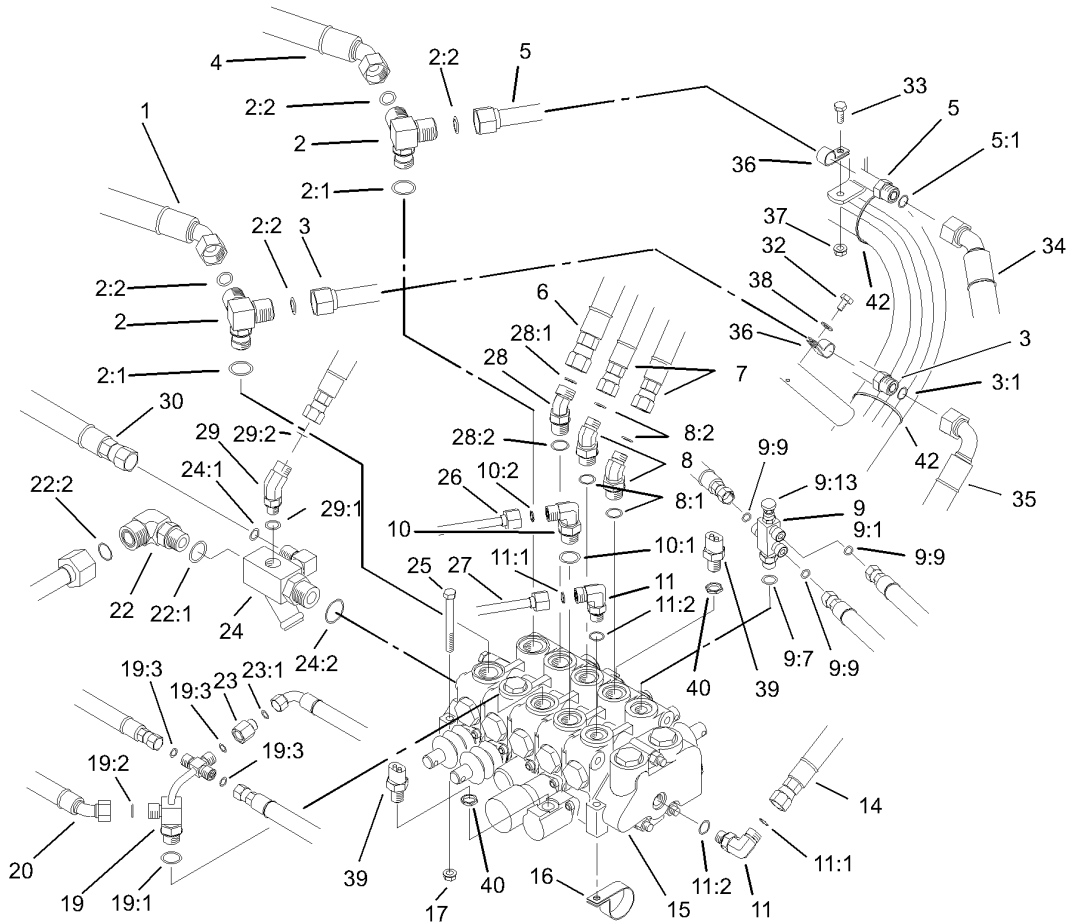
--	--	--	--



Seat Assembly

Ref	Part No.	Qty.	Description
1	322-2	2	Screw-HH
3	2412-133	2	R-Clamp
4	104-7050	1	Housing-Manual
5	104-7048	1	Cap-Housing
7	51-0790	1	Adjuster-Seat, LH
8	83-1270	1	Seat Support ASM
8:2	256-155	2	Bushing-Flange
9	3296-29	4	Nut-Lock, NI
10	3272-11	1	Pin-Cotter
11	68-5100	1	Rod-Seat, Prop
12	3296-16	1	Nut-Lock, NI
13	68-5310	1	Clip-Rod, Prop
14	321-3	1	Screw-HH
15	32121-45	1	Pin-Spring
16	3284-3	1	Pin-Groove
17	51-0350	1	Pin-Spring, Seat
18	3-6685	1	Spring
19	43-9071	1	Limit Switch ASM
19:1	43-8860	1	Plunger-Switch
19:2	43-8870	1	Boot-Switch
19:3	43-8620	1	Pin-Guide, Switch
19:4	43-8610	1	Guide
19:5	218-461	2	Nut-HH
19:7	237-7	1	O-Ring

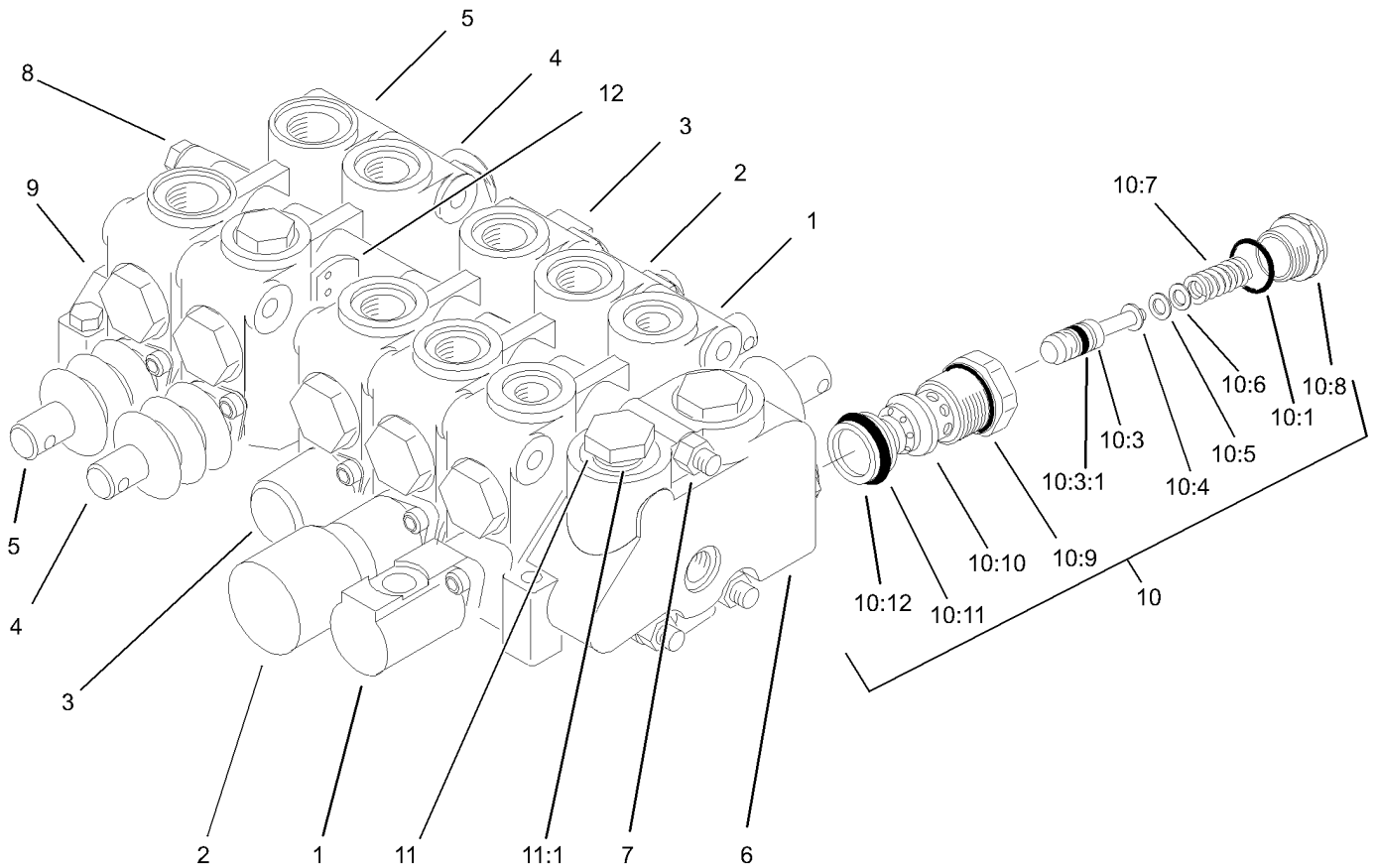
Ref	Part No.	Qty.	Description
19:8	43-8600	1	Spring-Compression
19:9	237-30	1	O-Ring
19:11	72-4320	1	Switch-Ball, N.o.
21	49-5880	1	Shaft-Support, Seat
22	83-1840-01	1	Cover-Valve, RH
23	3274-12	4	Screw-HSH
24	3256-23	6	Washer-Flat
25	51-0780	1	Slider-Seat
26	100-3187	1	Seat ASM
27	93-6686	1	Decal-Oil, HYD
28	106-6367	1	Decal-Service
28	106-6368	1	Decal-Service, Japanese
28	106-6369	1	Decal-Service, Spanish
28	106-6372	1	Decal-Service, Swedish
28	106-6371	1	Decal-Service, German
28	106-6370	1	Decal-Service, French
28	106-6373	1	Decal-Service, Italian
28	106-6374	1	Decal-Service, Portuguese
28	106-6375	1	Decal-Service, Norwegian
28	106-6376	1	Decal-Service, Finnish
28	106-6377	1	Decal-Service, Danish
28	106-6378	1	Decal-Service, Dutch



Control Valve Installation Assembly

Ref	Part No.	Qty.	Description
1	98-0647	1	Hose-HYD
2	63-4050	2	Fitting
2:1	237-80	1	O-Ring
2:2	237-65	2	O-Ring
3	70-7130	1	Line-Tube
3:1	237-65	2	O-Ring
4	98-0646	1	Hose-HYD
5	83-1200	1	Tube-Traction, LH Lower
5:1	237-65	1	O-Ring
6	98-2151	1	Hose-HYD
7	98-0649	2	Hose-HYD
8	340-138	2	Fitting-Hyd, 45 DEG
8:1	237-79	1	O-Ring
8:2	237-22	1	O-Ring
9	93-2556	1	Needle Valve ASM
9:1	93-2555	1	Fitting-Body
9:7	237-42	1	O-Ring
9:9	237-21	3	O-Ring
9:13	93-2554	1	Needle ASM
10	340-18	1	Fitting-Hyd, 90 DEG
10:1	237-79	1	O-Ring
10:2	237-22	1	O-Ring
11	340-77	2	Fitting-Hyd, 90 DEG
11:1	237-22	1	O-Ring

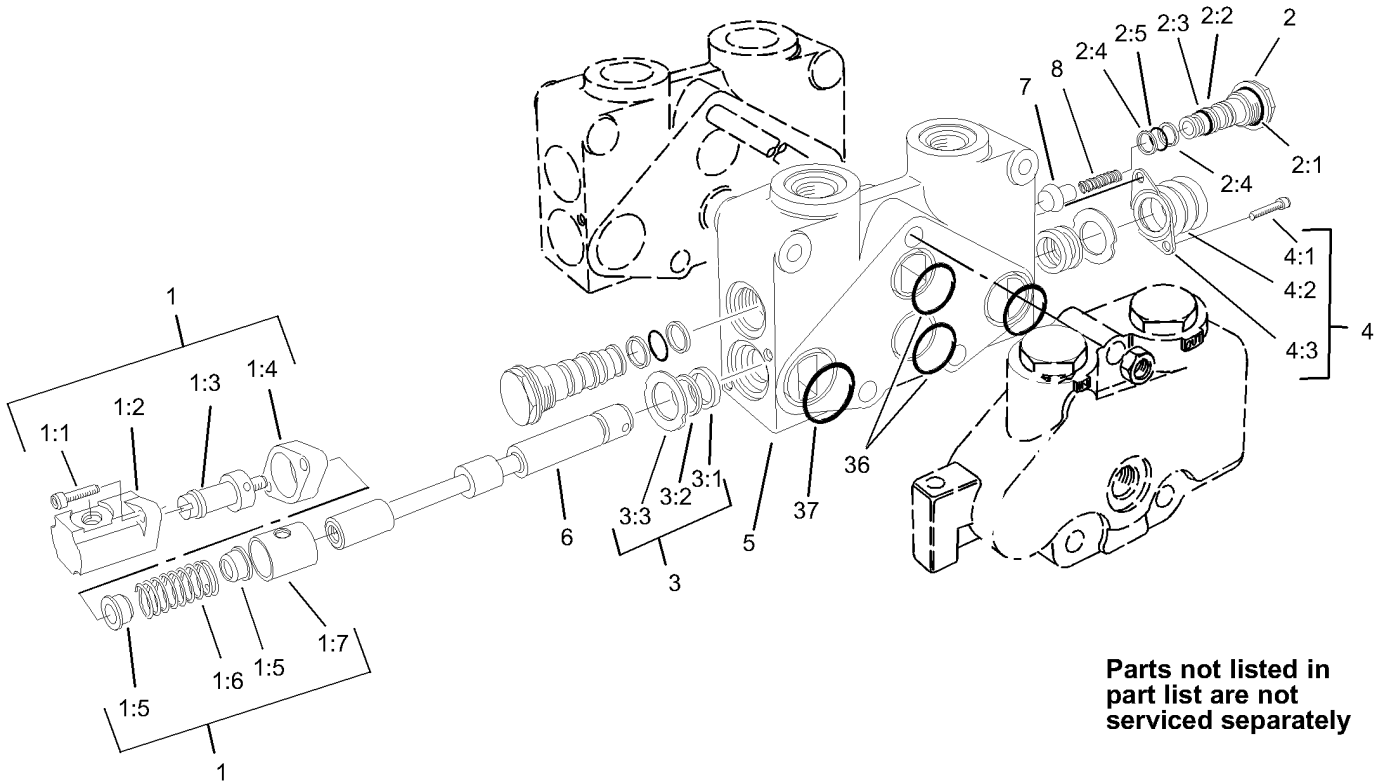
Ref	Part No.	Qty.	Description
11:2	237-42	1	O-Ring
14	98-2150	1	Hose-HYD
15	105-3800	1	Control Valve ASM
16	304-61	1	Clamp-Hose
17	32128-20	3	Nut-HF
19	83-1670	1	Fitting ASM
19:1	237-79	1	O-Ring
19:2	237-22	1	O-Ring
19:3	237-21	3	O-Ring
20	95-5986	1	Hose-HYD
22	340-16	1	Fitting-Hyd, 90
22:1	237-80	1	O-Ring
22:2	237-58	1	O-Ring
23	71-0990	1	Orifice
23:1	237-21	1	O-Ring
24	68-5260	1	Manifold-Tee
24:1	237-30	1	O-Ring
24:2	237-81	1	O-Ring
25	322-14	3	Screw-HH
26	63-4030	1	Tube-HYD
27	63-4020	1	Tube-HYD
28	340-101	1	Fitting-Hyd, 45 DEG
28:1	237-30	1	O-Ring
28:2	237-79	1	O-Ring



Control Valve Assembly No. 105-3800

Ref	Part No.	Qty.	Description
1	105-3801	1	Section 1 ASM
2	105-3802	1	Section 2 ASM
3	105-3803	1	Section 3 ASM
4	105-3804	1	Section 4 ASM
5	93-1386	1	Section 5 ASM
6	353-772	1	Cover-Left
7	3217-7	3	Nut-Hex
8	353-853	3	Bolt
9	353-668	1	Plate-Cover
10	353-766	1	Cart-Relief
10:1	237-54	1	O-Ring
10:3	353-531	1	Poppet And Ring ASM
10:3:1	353-392	1	Ring-Piston
10:4	353-328	1	Shim (.040)
10:5	353-329	1	Shim (.020)
10:6	353-330	1	Shim (.010)
10:7	353-855	1	Spring
10:8	353-334	1	Cap-Relief
10:9	353-331	1	O-Ring
10:10	353-760	1	Relief-Body
10:11	353-758	1	O-Ring
10:12	353-952	1	Seal-Back-Up
11	353-721	2	Plug
11:1	237-54	1	O-Ring

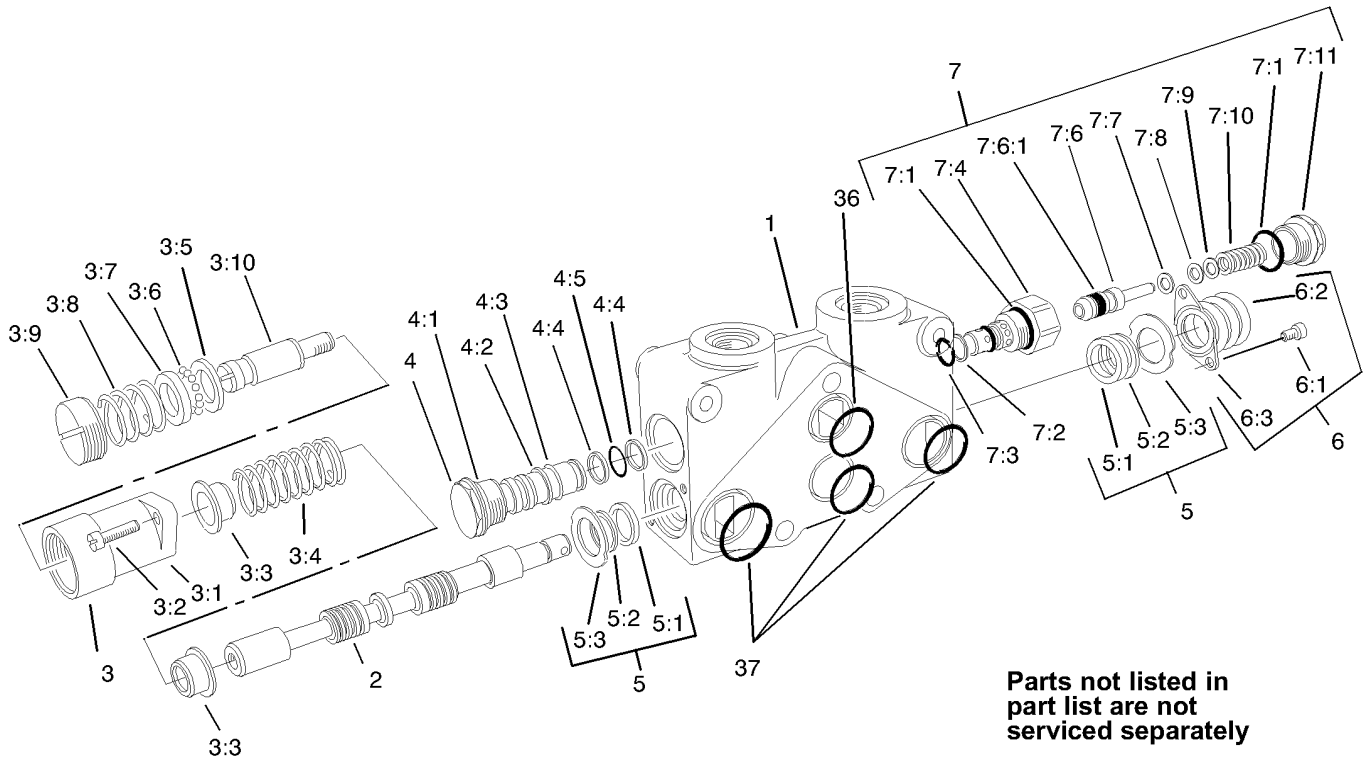
Ref	Part No.	Qty.	Description
12	354-122	1	Disc-Seal
13	92-2545	1	Spool Set Kit
14	84-2190	1	Section Seal Kit
14:1		12	O-Ring
14:2		12	O-Ring
14:3		16	O-Ring
14:4		8	O-Ring
14:5		1	Disc-Seal
14:6		1	Disc-Seal



Section 1 Assembly No. 105-3801

Ref	Part No.	Qty.	Description
1	105-3807	1	Positioner-Interlock
1:1	3274-70	2	Screw-HSH
1:2	353-727	1	Bonnet-Special
1:3	104-7739	1	Spud-V20
1:4	353-733	1	Spacer-Bonnet
1:5	353-417	2	Collar-Stop
1:6	104-7741	1	Spring
1:7	353-728	1	Sleeve
2	353-481	2	Lift Check ASM
2:1	237-54	1	O-Ring
2:2	353-306	1	Washer-Backup
2:3	353-305	1	O-Ring
2:4	353-303	2	Washer-Backup
2:5	353-302	1	O-Ring
3	92-2548	2	Spool Set Kit
3:1	353-957	1	Cup-Seal
3:2	92-2546	1	Wiper-Seal
3:3	92-2547	1	Seal-Retainer
4	93-3652	1	Boot-Dust
4:1	3274-52	2	Screw-HSH
4:2	353-575	1	Boot
4:3	93-3651	1	Retainer-Boot
⊕5		1	Housing-V20c
⊕6		1	Spool-V20c

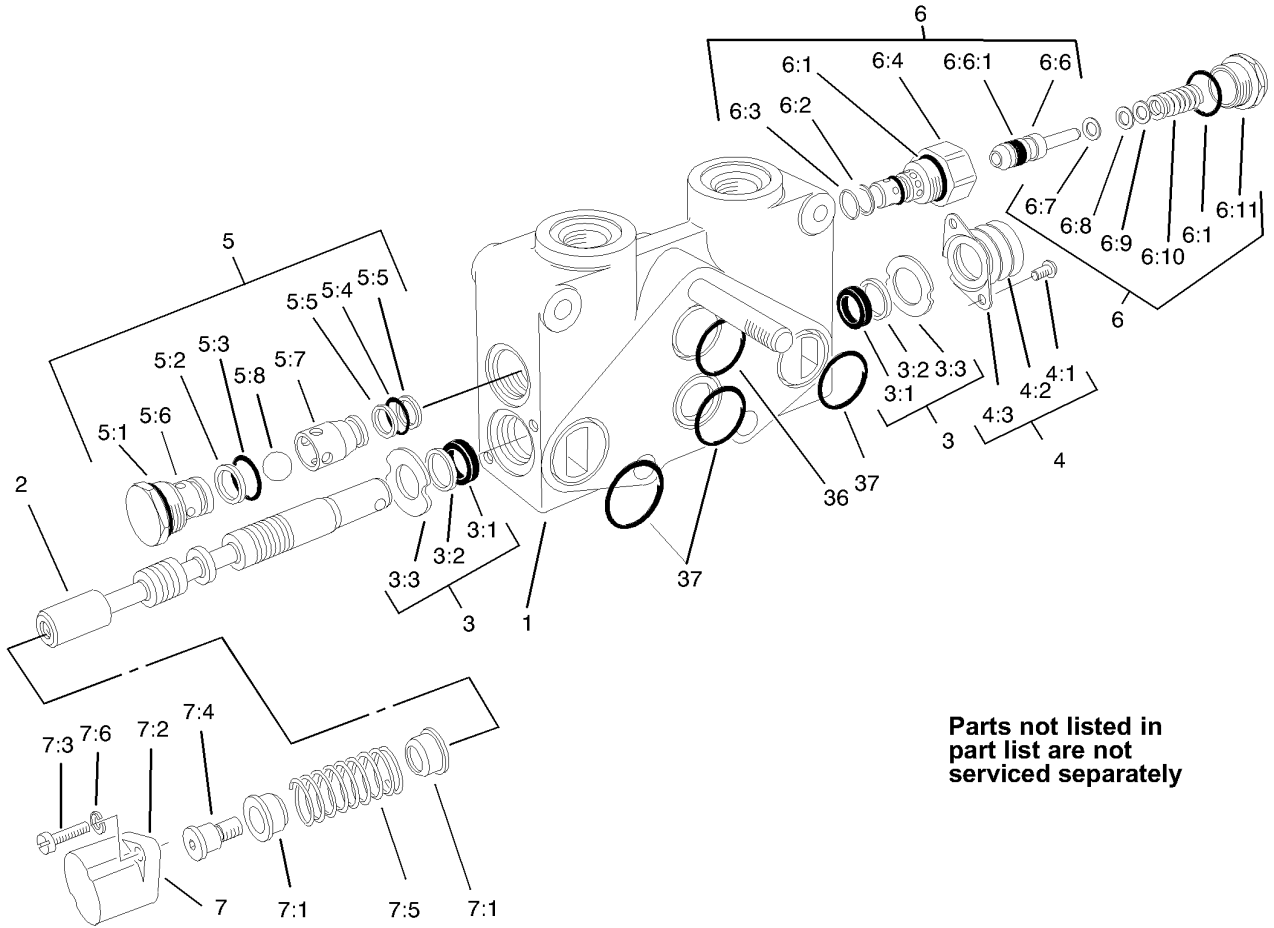
Ref	Part No.	Qty.	Description
7	353-301	1	Check-Lift, Poppet
8	353-304	1	Spring-Check, Lift
⊕36		2	O-Ring
⊕37		2	O-Ring



Section 2 Assembly No. 105-3802

Ref	Part No.	Qty.	Description
①		1	Housing-V20t
②		1	Spool-V20
3	105-3806	1	Positioner
3:1	99-8181	1	Bonnet-R
3:2	3274-15	2	Screw-HSH
3:3	353-417	2	Collar-Stop
3:4	104-7741	1	Spring
3:5	354-29	1	Plate-Thrust
3:6	52-5880	12	Ball-Detent
3:7	42-2680	1	Race-Ball
3:8	104-7727	1	Spring-Detent
3:9	353-763	1	Cap-Adjustment
3:10	353-762	1	Spud-Out
4	353-481	1	Lift Check ASM
4:1	237-54	1	O-Ring
4:2	353-306	1	Washer-Backup
4:3	353-305	1	O-Ring
4:4	353-303	2	Washer-Backup
4:5	353-302	1	O-Ring
5	92-2548	2	Spool Set Kit
5:1	353-957	1	Cup-Seal
5:2	92-2546	1	Wiper-Seal
5:3	92-2547	1	Seal-Retainer
6	93-3652	1	Boot-Dust

Ref	Part No.	Qty.	Description
6:1	3274-52	2	Screw-HSH
6:2	353-575	1	Boot
6:3	93-3651	1	Retainer-Boot
7	353-642	1	Cartridge-Relief
7:1	237-54	2	O-Ring
7:2	353-306	1	Washer-Backup
7:3	353-305	1	O-Ring
7:4	353-851	1	Body-Relief
7:6	353-531	1	Poppet And Ring ASM
7:6:1	353-392	1	Ring-Piston
7:7	353-328	1	Shim (.040)
7:8	353-329	1	Shim (.020)
7:9	353-330	1	Shim (.010)
7:10	353-398	1	Spring
7:11	353-334	1	Cap-Relief
③6		1	O-Ring
③7		3	O-Ring

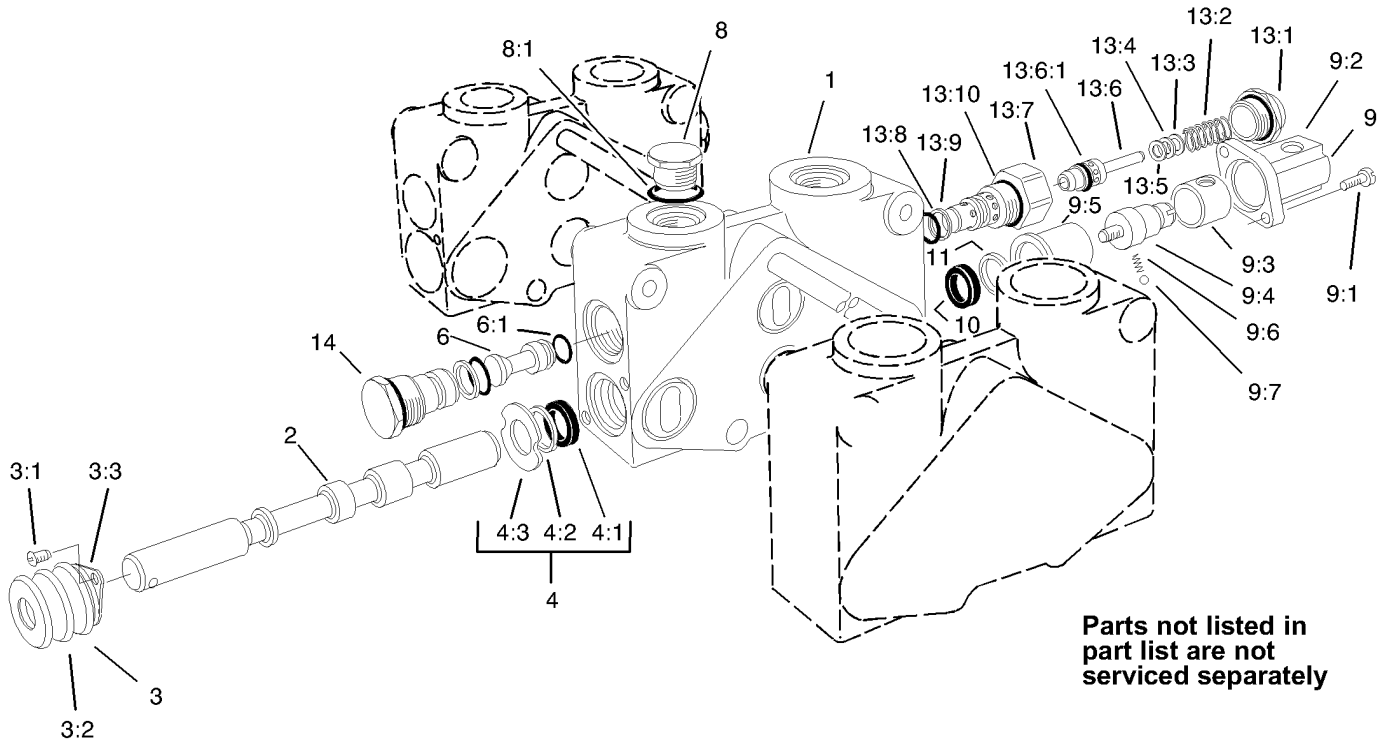


Parts not listed in part list are not serviced separately

Section 3 Assembly No. 105-3803

Ref	Part No.	Qty.	Description
①		1	Housing-V20t
②		1	Spool-V20
3	92-2548	2	Spool Set Kit
3:1	353-957	1	Cup-Seal
3:2	92-2546	1	Wiper-Seal
3:3	92-2547	1	Seal-Retainer
4	93-3652	1	Boot-Dust
4:1	3274-52	2	Screw-HSH
4:2	353-575	1	Boot
4:3	93-3651	1	Retainer-Boot
5	354-129	1	Anticavitation Check ASM
5:1	237-54	1	O-Ring
5:2	353-306	1	Washer-Backup
5:3	353-305	1	O-Ring
5:4	353-302	1	O-Ring
5:5	353-303	2	Washer-Backup
5:6	353-483	1	Body-Check
5:7	353-484	1	Return-Ball, Check
5:8	353-737	1	Ball-Check
6	353-642	1	Cartridge-Relief
6:1	237-54	2	O-Ring
6:2	353-306	1	Washer-Backup
6:3	353-305	1	O-Ring
6:4	353-851	1	Body-Relief

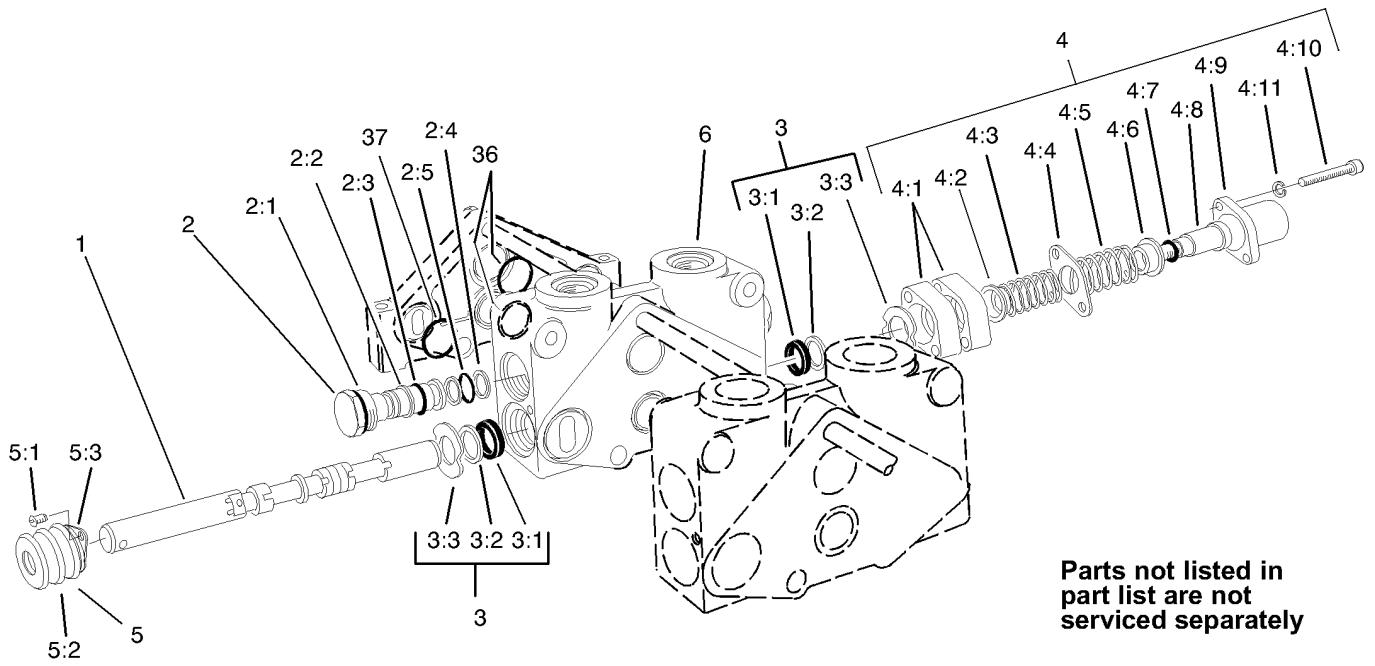
Ref	Part No.	Qty.	Description
6:6	353-531	1	Poppet And Ring ASM
6:6:1	353-392	1	Ring-Piston
6:7	353-328	1	Shim (.040)
6:8	353-329	1	Shim (.020)
6:9	353-330	1	Shim (.010)
6:10	353-398	1	Spring
6:11	353-334	1	Cap-Relief
7	105-3808	1	Positioner-Spring Return
7:1	353-417	2	Collar-Stop
7:2	99-6895	1	Bonnet
7:3	52-5900	2	Screw
7:4	52-5860	1	Collar-Spool
7:5	104-7741	1	Spring
7:6	3253-3	2	Washer-Lock
③6		1	O-Ring
③7		3	O-Ring



Section 4 Assembly No. 105-3804

Ref	Part No.	Qty.	Description
1		1	Housing-V20p
2		1	Spool-V20
3	93-3652	1	Boot-Dust
3:1	3274-52	2	Screw-HSH
3:2	353-575	1	Boot
3:3	93-3651	1	Retainer-Boot
4	92-2548	1	Spool Set Kit
4:1	353-957	1	Cup-Seal
4:2	92-2546	1	Wiper-Seal
4:3	92-2547	1	Seal-Retainer
6	353-844	1	Plug
6:1	353-850	1	O-Ring
8	353-550	1	Plug-HYD
8:1	237-79	1	O-Ring
9	353-840	1	Switch Positioner Bonnet ASM
9:1	52-5900	2	Screw
9:2	353-847	1	Bonnet
9:3	353-849	1	Sleeve
9:4	353-846	1	Spud
9:5	353-845	1	Sleeve-Detent
9:6	353-730	1	Spring
9:7	353-731	2	Ball
10	353-957	1	Cup-Seal
11	353-958	1	Washer

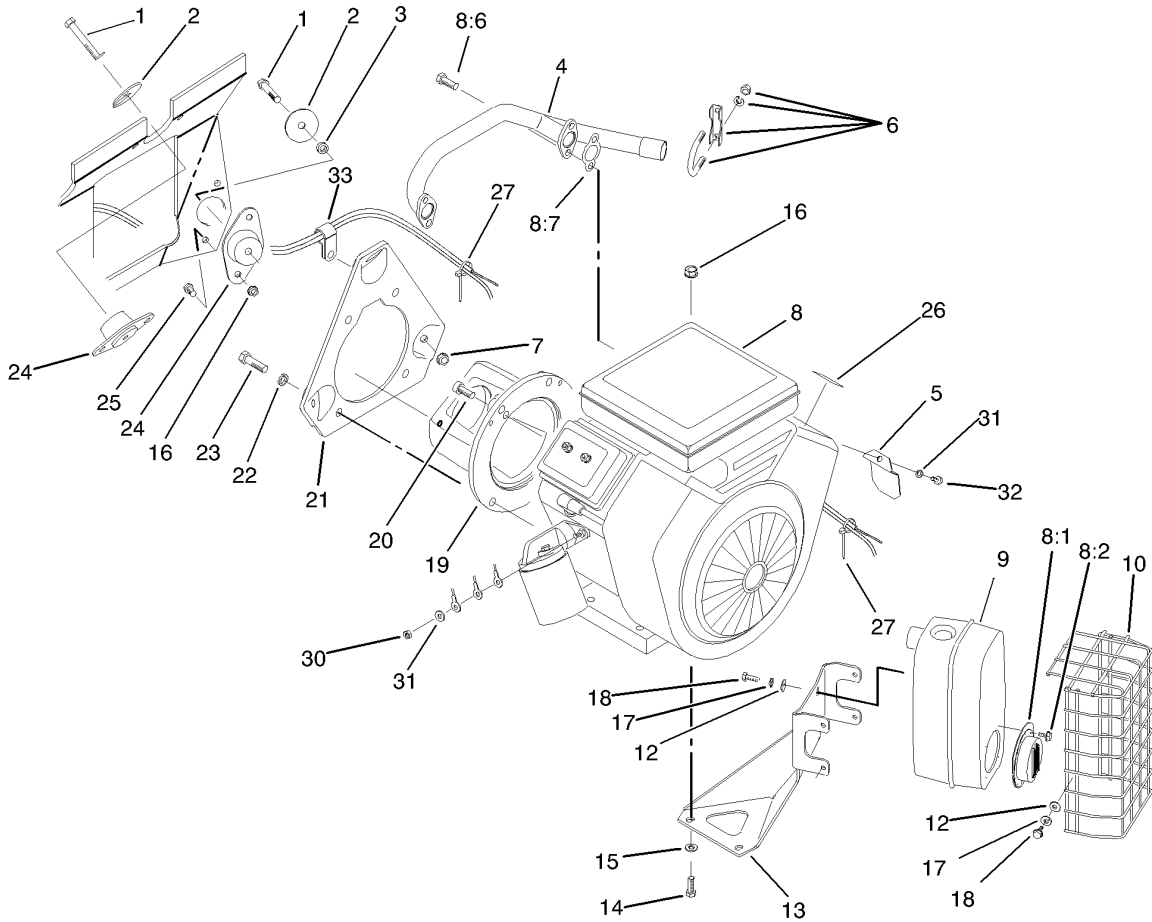
Ref	Part No.	Qty.	Description
13	354-140	1	Relief-Rcm
13:1	353-334	1	Cap-Relief
13:2	353-398	1	Spring
13:3	353-330	1	Shim (.010)
13:4	353-329	1	Shim (.020)
13:5	353-328	1	Shim (.040)
13:6	353-531	1	Poppet And Ring ASM
13:6:1	353-392	1	Ring-Piston
13:7	353-851	1	Body-Relief
13:8	353-305	1	O-Ring
13:9	353-306	1	Washer-Backup
13:10	237-54	2	O-Ring
14	353-953	1	Plug ASM



Section 5 Assembly No. 93-1386

Ref	Part No.	Qty.	Description
1	94-5434	1	Spool
2	353-481	2	Lift Check ASM
2:1	237-54	1	O-Ring
2:2	353-306	1	Washer-Backup
2:3	353-305	1	O-Ring
2:4	353-303	2	Washer-Backup
2:5	353-302	1	O-Ring
3	92-2548	2	Spool Set Kit
3:1	353-957	1	Cup-Seal
3:2	92-2546	1	Wiper-Seal
3:3	92-2547	1	Seal-Retainer
4	353-833	1	Positioner ASM
4:1	353-733	2	Spacer-Bonnet
4:2	353-417	1	Collar-Stop
4:3	353-831	1	Spring
4:4	353-529	1	Plate-Retainer, Seal
4:5	92-3148	1	Spring-Traction
4:6	353-808	1	Collar-Spring
4:7	353-830	1	O-Ring
4:8	94-4248	1	Collar-Spool
4:9	99-6895	1	Bonnet
4:10	354-28	2	Screw-HS
4:11	3253-4	2	Washer-Lock
5	93-3652	1	Boot-Dust

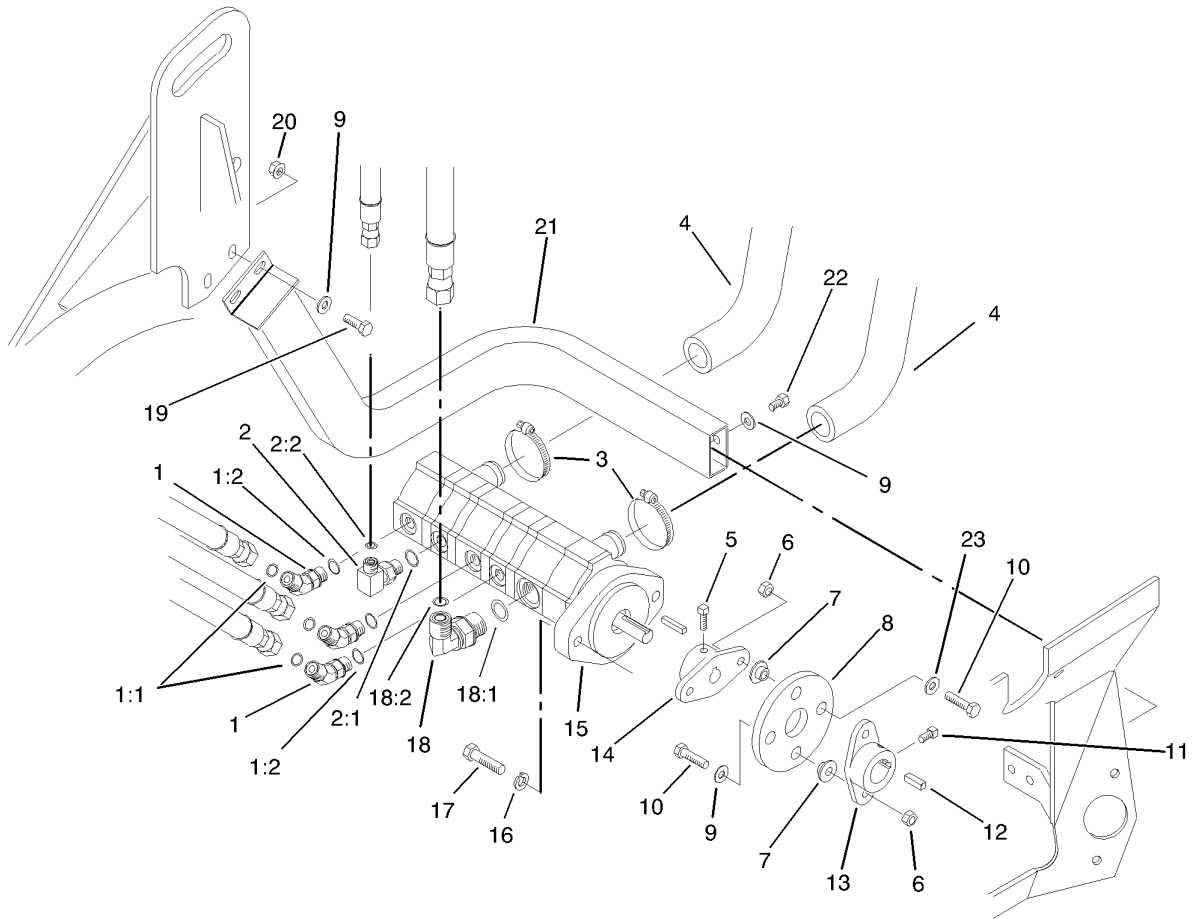
Ref	Part No.	Qty.	Description
5:1	3274-52	2	Screw-HSH
5:2	353-575	1	Boot
5:3	93-3651	1	Retainer-Boot
6		1	Housing-V20p
36		1	O-Ring
37		3	O-Ring



Engine Installation Assembly

Ref	Part No.	Qty.	Description
1	323-12	3	Screw-HH
2	83-1040	3	Washer-Flat
3	83-1050	2	Spacer
4	83-1080	1	Exhaust Manifold ASM
5	83-2310	1	Shield-Regulator
6	2112-11	1	Clamp-Muffler
7	3290-357	3	Nut-HHF
8	106-4618	1	Engine-18hp, Vanguard
8:1		1	Deflector-Exhaust
8:2		4	Screw-HH
8:6		4	Screw-HHF
8:7		2	Gasket-Manifold, Exhaust
9	98-0616	1	Muffler ASM
10	83-1400-03	1	Shield-Muffler
12	3256-1	8	Washer-Flat
13	83-1630-03	1	Bracket-Support, Muffler
14	322-8	2	Screw-HH
15	3256-23	2	Washer-Flat
16	32128-20	8	Nut-HF
17	3253-3	8	Washer-Lock
18	49-2040	8	Screw-Tapping
19	83-1060-03	1	Adapter-Pump
20	3274-7	2	Screw-HSH
21	85-8120-03	1	Plate-Mount, Engine

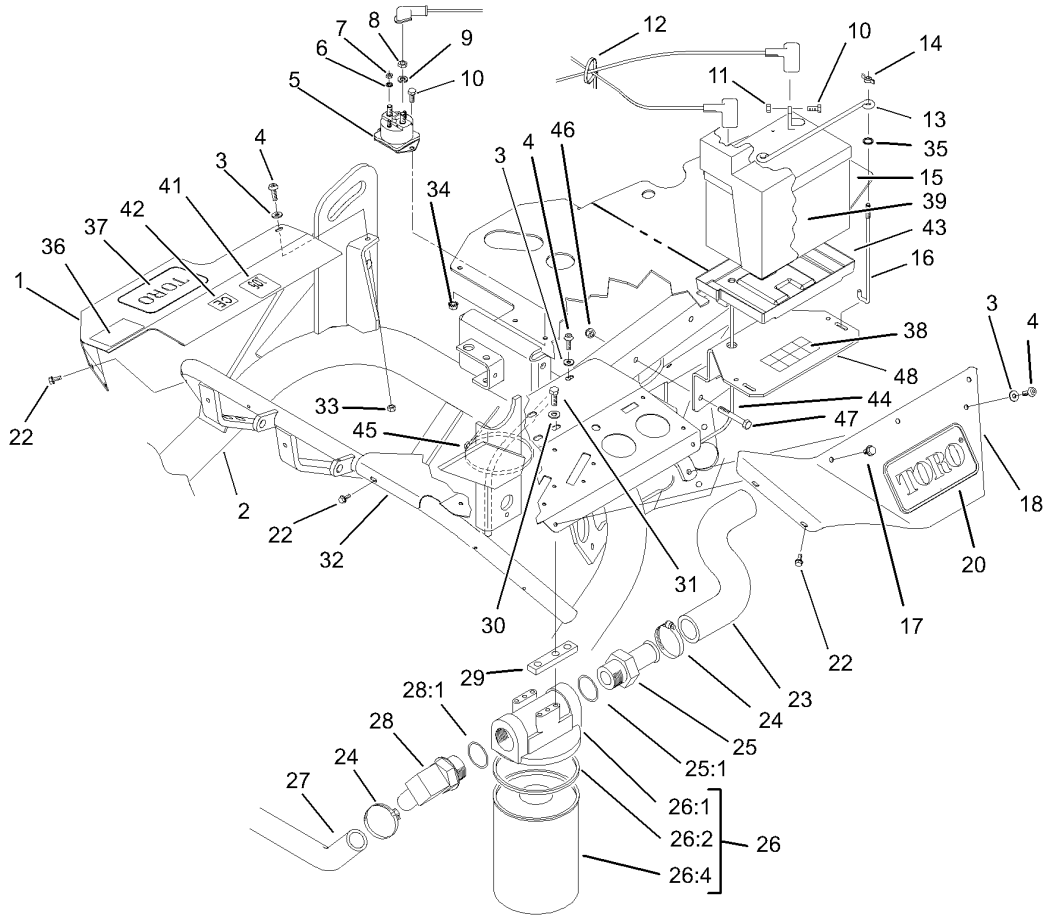
Ref	Part No.	Qty.	Description
22	3253-6	4	Washer-Lock
23	324-7	4	Screw-HH
24	83-1030	3	Mount-Engine
25	322-3	6	Screw-HH
26	93-8069	1	Decal-Surface, Hot
27	3290-379	2	Tie-Cable
30	43-2830	1	Nut-Hex
31	43-5930	2	Washer-Spring
32	33113-016	1	Screw-HH
33	2412-81	1	Clamp-R



Hydraulic Pump Installation Assembly

Ref	Part No.	Qty.	Description
1	340-87	3	Fitting-Hyd, 45 DEG
1:1	237-22	1	O-Ring
1:2	237-42	1	O-Ring
2	340-82	1	Adapter
2:1	237-42	1	O-Ring
2:2	237-21	1	O-Ring
3	2412-34	2	Clamp-Hose
4	95-5966	2	Hose-Pump Inlet
5	3241-6	2	Screw-SQH
6	3296-29	4	Nut-Lock, NI
7	27-6600	4	Spacer-Coupling
8	44-2230	1	Coupling-Rubber
9	3256-23	4	Washer-Flat
10	322-6	4	Screw-HH
11	3241-2	2	Screw-SQH
12	10-7070	1	Key-Square
13	27-1960	1	Hub-Engine
14	27-1970	1	Hub-Pump
15	107-2567	1	Pump-Gear, 5 Section
15:1	107-2568	1	Seal Kit
16	3253-21	2	Washer-Lock
17	323-7	2	Screw-HH
18	340-105	1	Fitting-Hyd, 90 DEG
18:1	237-80	1	O-Ring

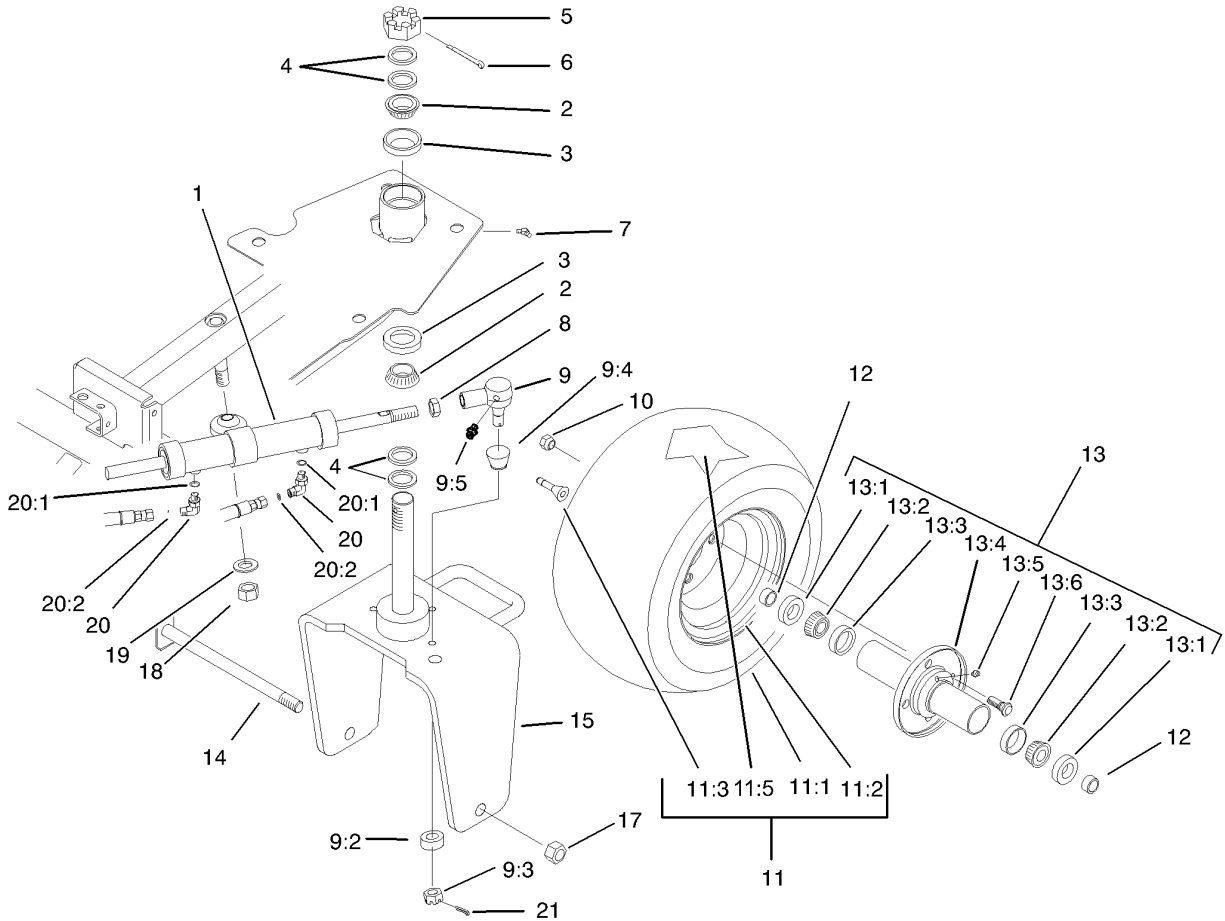
Ref	Part No.	Qty.	Description
18:2	237-30	1	O-Ring
19	322-4	2	Screw-HH
20	32128-20	2	Nut-HF
21	106-9077-01	1	Guard ASM
22	322-1	2	Screw-HH
23	3256-3	4	Washer-Flat



Frame Assembly

Ref	Part No.	Qty.	Description
1	94-2694-01	1	Cover-RH
2	106-6365-01	1	Frame ASM
3	3256-1	3	Washer-Flat
4	3274-69	3	Screw-HSBH
5	28-4210	1	Solenoid
6	3254-1	2	Washer-Lock, Int
7	3219-14	2	Nut-Hex
8	3218-13	2	Nut-Jam
9	3253-4	2	Washer-Lock
10	321-3	4	Screw-HH
11	3217-5	2	Nut-Hex
12	3290-378	1	Tie-Cable
13	100-6434	1	Rod-Battery, Hold Down
14	32103-22	2	Nut-Wing
15	104-8162	1	Battery (Dry)
16	100-6435	2	Post-Battery
17	46-8560	3	Screw-HHF
18	83-0840-01	1	Shield-Cover, Valve
20	105-9751	1	Decal
22	32104-116	5	Screw
23	95-7119	1	Hose-Line, Return
24	2412-34	3	Clamp-Hose
25	353-563	1	Fitting-Hyd, Straight
25:1	237-101	1	O-Ring

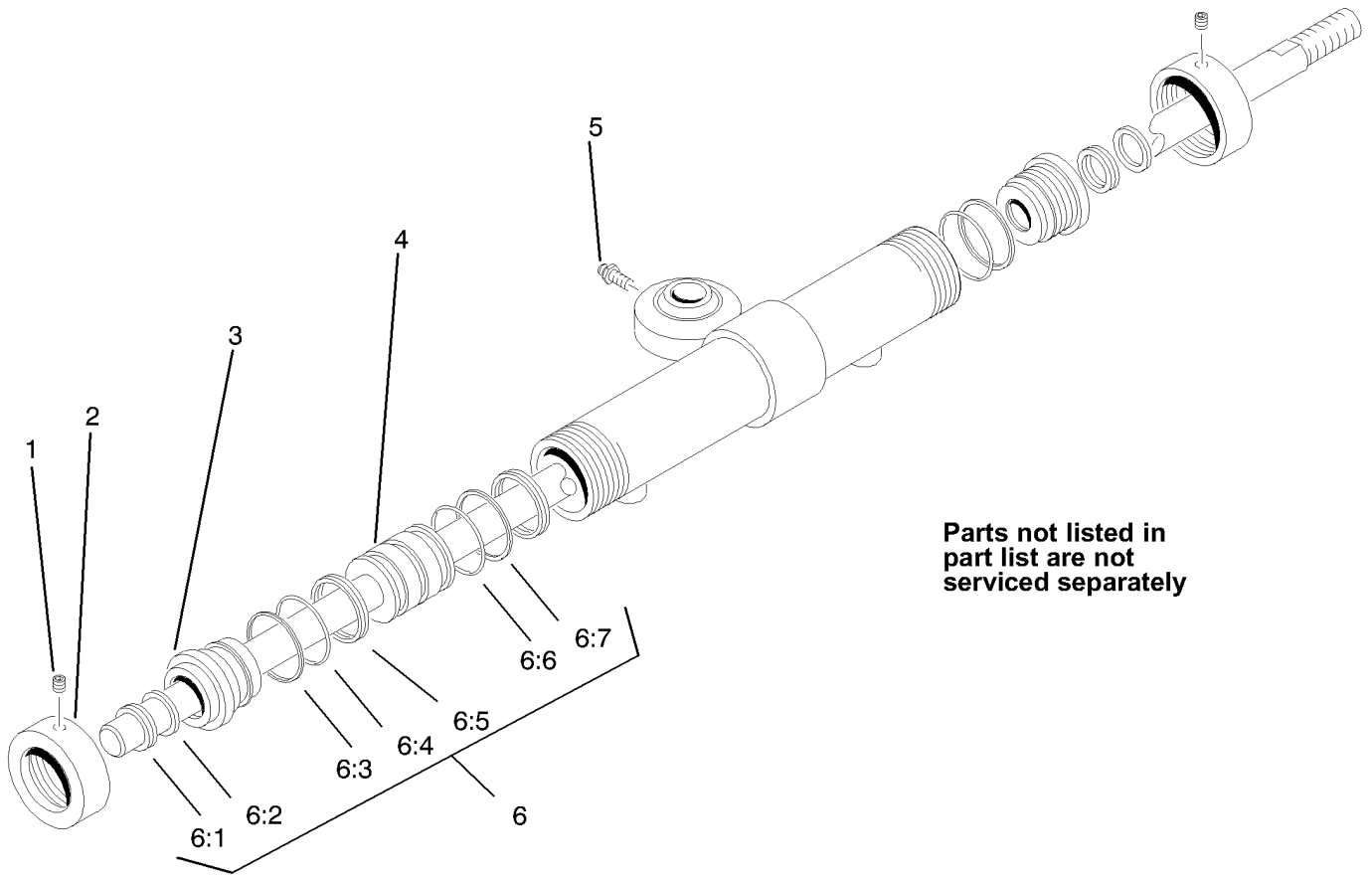
Ref	Part No.	Qty.	Description
26		1	Filter And Head ASM
26:1	44-5560	1	Head-Filter, Oil
26:2	72-3850	1	Seal-Filter, Oil
26:4	74-3570	1	Filter
27	68-5880	1	Hose-HYD
28	353-564	1	Fitting-90 DEG
28:1	237-101	1	O-Ring
29	27-2380	2	Spacer
30	3256-23	4	Washer-Flat
31	322-4	4	Screw-HH
32	83-0830-01	1	Panel-Control, Upper
33	3296-16	3	Nut-Lock, NI
34	32149-2	2	Nut
35	237-143	2	O-Ring
36	93-8065	1	Decal-Traction
37	67-1300	1	Decal
38	93-7276	1	Decal-Danger
39	106-9062	1	Cover-Battery
41	105-4674	1	Decal-Noise, Ce
42	93-7252	1	Decal
43	106948	1	Tray-Battery
44	98-0601	1	Tube-Drain, Battery
45	3290-379	1	Tie-Cable
46	3296-29	2	Nut-Lock, NI



Rear Wheel Assembly

Ref	Part No.	Qty.	Description
1	83-2330	1	Cylinder-Steering
2	254-70	2	Bearing-Cone
3	254-61	2	Bearing-Cup
4	18-6320	4	Washer-Steering
5	32136-9	1	Nut-SHH
6	3272-37	1	Pin-Cotter
7	302-11	1	Fitting-Lube, 45 DEG
8	84-5300	1	Nut-Jam
9	107-2553	1	Rod End ASM
9:2	98-2389	1	Spacer-Link, Pull
9:3	32136-2	1	Nut-SHH
9:4	106-6896	1	Seal
9:5	302-5	1	Fitting-Grease
10	242-50	4	Nut-Lug
11		1	Wheel And Tire ASM
11:1	28-3680	1	Tire
11:2	217-60	1	Rim
11:3	232-27	1	Stem-Valve
11:5	232-37	1	Tube
12	74-3730	2	Spacer-Spindle, Rear
13	72-9710	1	Hub-Tire, Sulky
13:1	253-111	2	Seal-Oil
13:2	254-78	2	Bearing-Cone
13:3	254-79	2	Bearing-Roller, Cup

Ref	Part No.	Qty.	Description
13:4	75-9440	1	Hub ASM
13:5	302-11	1	Fitting-Lube, 45 DEG
13:6	10-6830	4	Stud-Type, Drive
14	5-3934	1	Bolt-Caster
15	95-5952-01	1	Fork-Castor
17	3296-67	1	Nut-Lock NI
18	3217-12	1	Nut-Hex
19	3256-28	1	Washer-Flat
20	340-132	2	Fitting-Hyd, 90 DEG
20:1	237-78	1	O-Ring
20:2	237-21	1	O-Ring
21	3272-12	1	Pin-Cotter

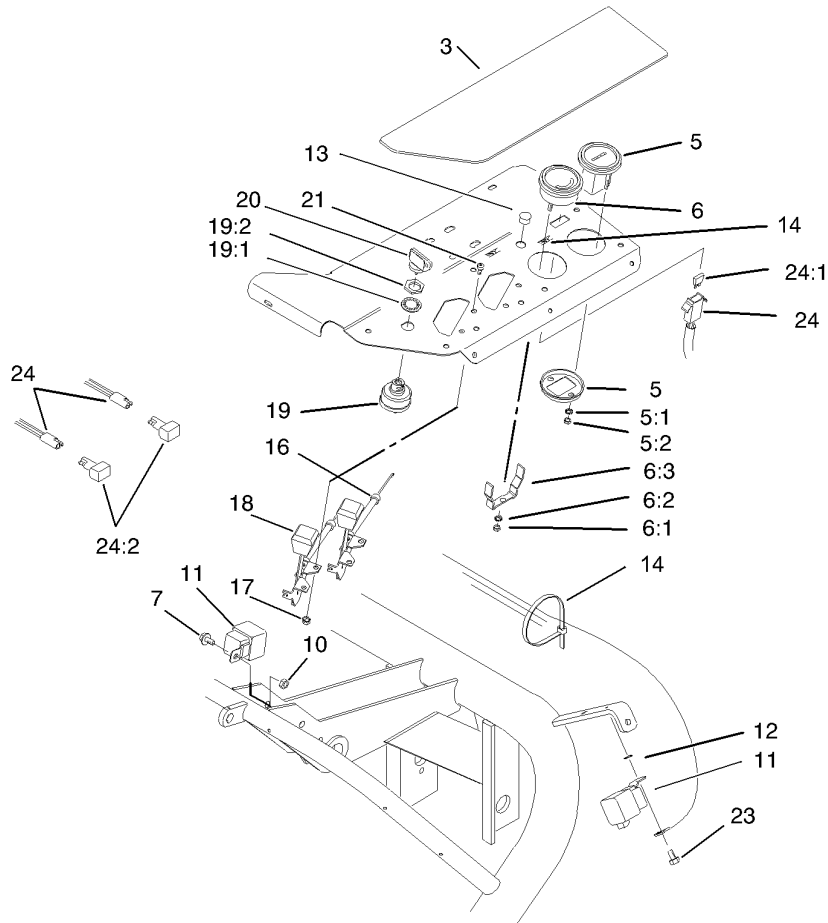


Parts not listed in part list are not serviced separately

Hydraulic Cylinder Assembly No. 83-2330

Ref	Part No.	Qty.	Description
1	3245-1	2	Screw-Set, HSH
2		2	Cap-Threaded
3		2	Cap-Head, Threaded
4		2	Rod ASM
5	302-5	1	Fitting-Grease
6	83-2380	1	Seal Repair Kit
6:1		2	Wiper-Rod
6:2		2	U-Cup-Double Lip
6:3		2	Ring-Back-Up
6:4		2	O-Ring
6:5		2	Ring-Wear
6:6		1	O-Ring
6:7		1	O-Ring

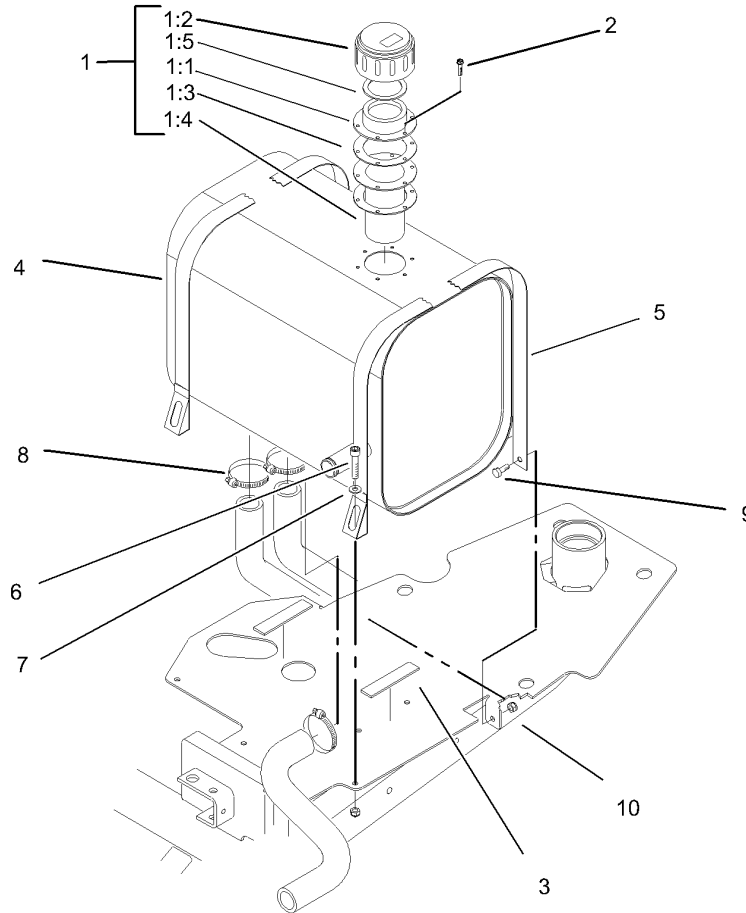
--	--	--	--



Control Panel Assembly

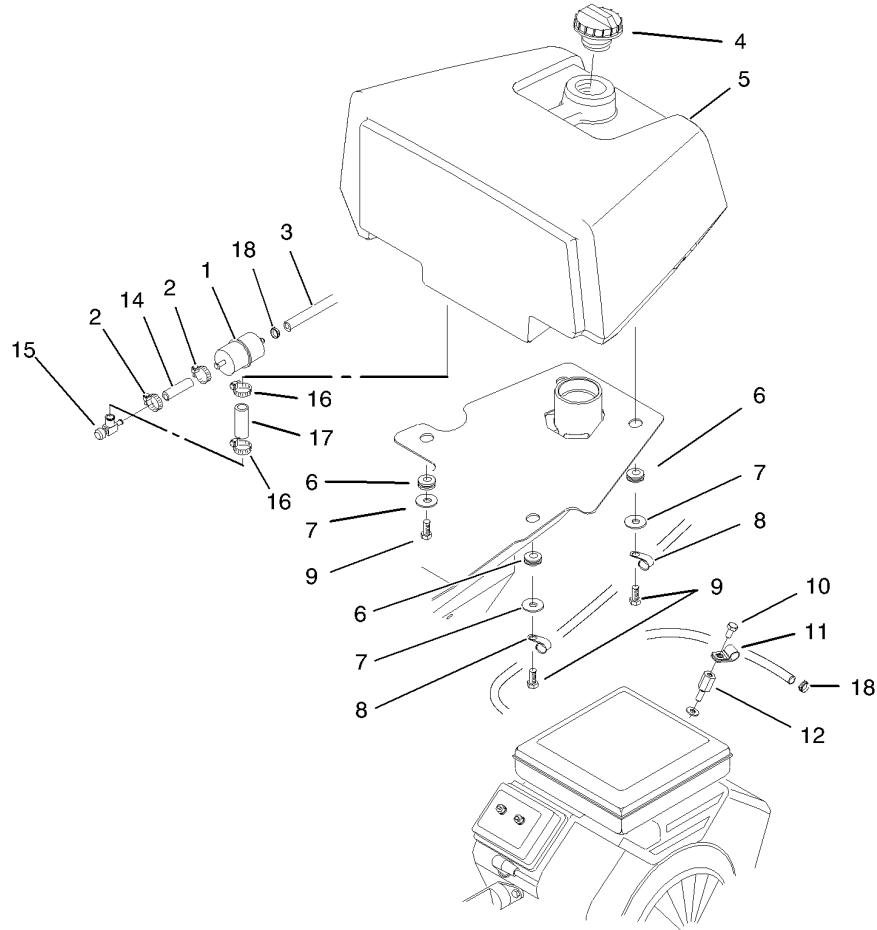
Ref	Part No.	Qty.	Description
3	107-2554	1	Decal-Panel, Control
5	66-2950	1	Gauge-Hourmeter
5:1	3255-20	2	Washer-Lock
5:2	3217-25	2	Nut-Hex
6	98-2160	1	Voltmeter
6:1	3217-27	1	Nut-Hex
6:2	3255-25	1	Washer-Lock
6:3	78-0080	1	Clamp-Mounting
7	321-4	1	Screw-HH
10	3296-16	1	Nut-Lock, NI
11	70-1480	2	Relay
12	3255-7	1	Washer-Lock/ext
13	2410-64	1	Plug-Button
14	3290-378	3	Tie-Cable
16	83-0040	1	Control-Choke
17	3296-12	4	Nut-Lock
18	83-0030	1	Control-Throttle
19	88-9830	1	Key Switch ASM
19:1	3254-5	1	Washer-Tooth
19:2	218-461	1	Nut-HH
20	63-8360	2	Key-Ignition
21	3290-134	4	Screw
23	32104-95	1	Screw-HWH
24	104-2058	1	Harness-Wire, Main

Ref	Part No.	Qty.	Description
24:1	218-578	1	Fuse-10 Amp
24:2	100-4918	2	Diode
●24:3	106-2790	1	Link-Fusible
●24:4	106-2791	1	Link-Fusible



Hydraulic Reservoir Assembly

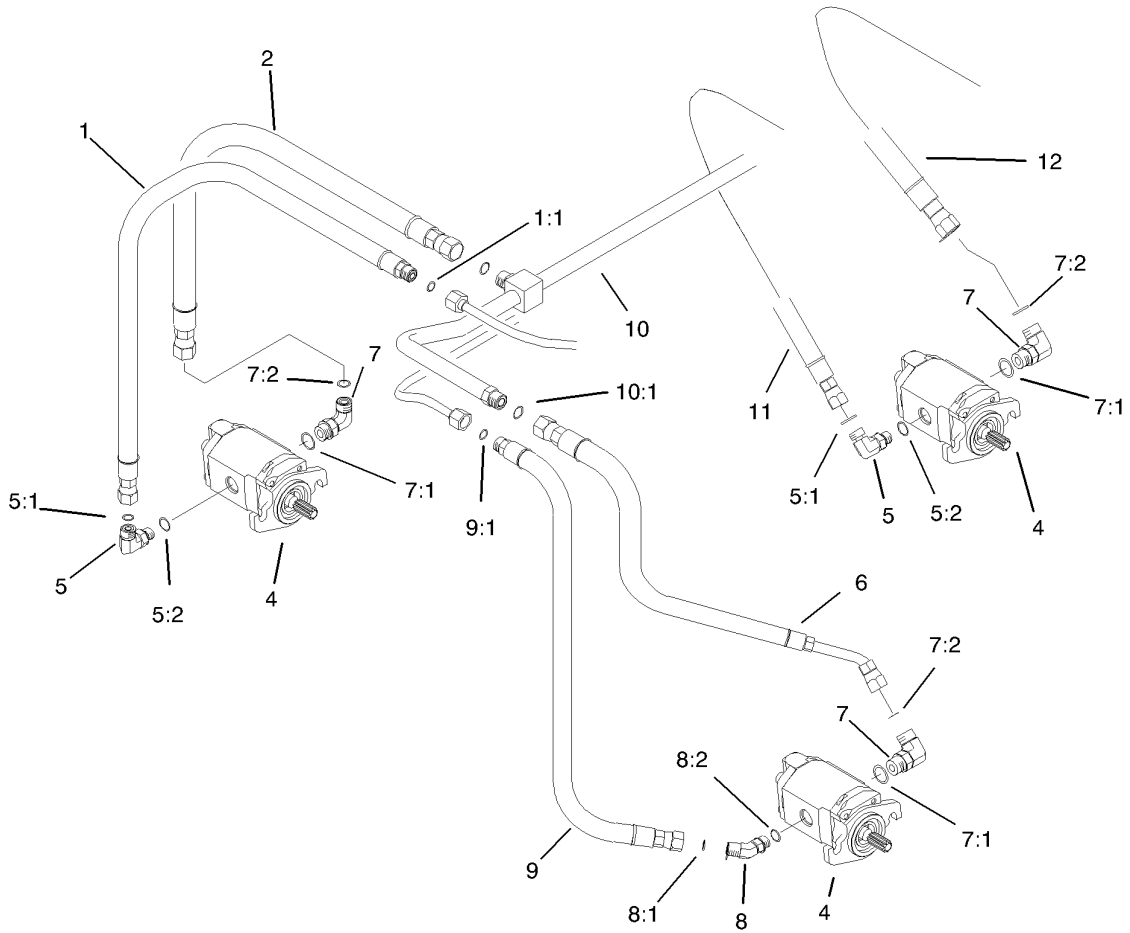
Ref	Part No.	Qty.	Description				
1	62-2570	1	Filler Cap ASM				
1:1	353-962	1	Cap ASM				
1:2	353-961	1	Flange				
1:3	353-963	2	Gasket				
1:4	62-2610	1	Strainer-Cap, Filler				
1:5	76-1720	1	Gasket-Cap, Filler				
2	32144-34	6	Screw-Forming, Thread				
3	95-5951	2	Strip-Seal				
4	95-7118	1	Tank-Hydraulic				
5	27-2400	2	Reservoir Strap ASM				
6	3274-19	2	Screw-HSH				
7	3256-22	2	Washer-Flat				
8	2412-34	3	Clamp-Hose				
9	321-3	2	Screw-HH				
10	3296-16	4	Nut-Lock, NI				



Fuel Tank Assembly

Ref	Part No.	Qty.	Description
1	94-2690	1	Filter-Fuel
2	2412-108	2	Clamp-Worm
3	83-2041	1	Hose-Fuel
4	93-7170	1	Cap-Fuel
5	105-8266	1	Tank-Fuel
6	240-11	4	Bushing-Flange
7	63-8410	4	Washer
8	2412-41	3	Clamp
9	323-6	4	Screw-HH
10	33113-012	1	Screw-HH
11	2412-94	1	Clamp
12	106-4616	1	Screw-Spacer
14	83-2040	1	Hose-Fuel
15	83-1390	1	Valve-Shut-Off, Fuel
16	2412-36	2	Clamp-Hose
17	56-2230	1	Hose-Fuel
18	2412-98	2	Clamp

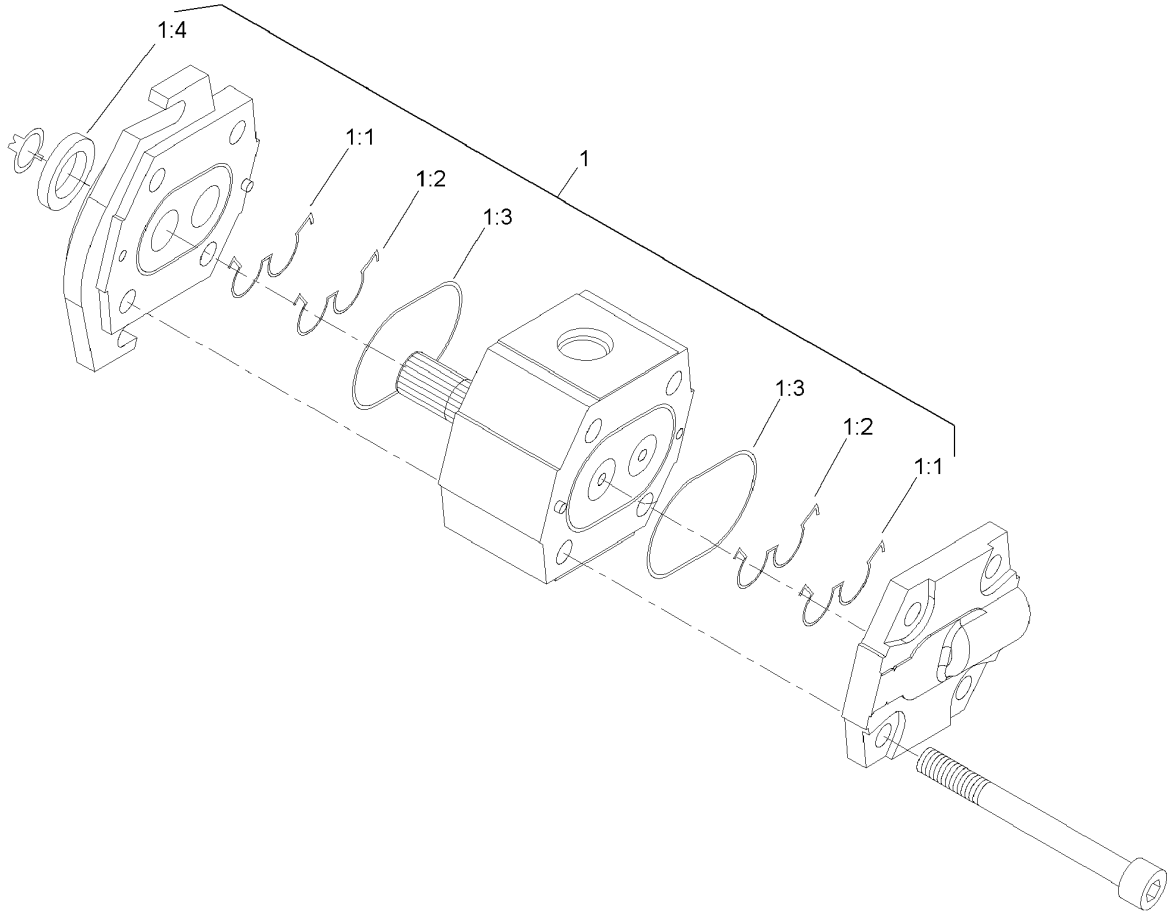
--	--	--	--



Reel Motor Installation Assembly

Ref	Part No.	Qty.	Description
1	95-5984	1	Hose-HYD
1:1	237-22	1	O-Ring
2	95-5985	1	Hose-HYD
4	105-9770	3	Motor-HYD
5	340-77	2	Fitting-Hyd, 90 DEG
5:1	237-22	1	O-Ring
5:2	237-42	1	O-Ring
6	95-5989	1	Hose-HYD
7	340-98	3	Fitting-Hyd, 90 DEG
7:1	237-79	1	O-Ring
7:2	237-30	1	O-Ring
8	340-87	1	Fitting-Hyd, 45 DEG
8:1	237-22	1	O-Ring
8:2	237-42	1	O-Ring
9	95-5988	1	Hose-HYD
9:1	237-22	1	O-Ring
10	100-6431	1	Tube-Return
10:1	237-30	2	O-Ring
11	95-5986	1	Hose-HYD
12	95-5987	1	Hose-HYD

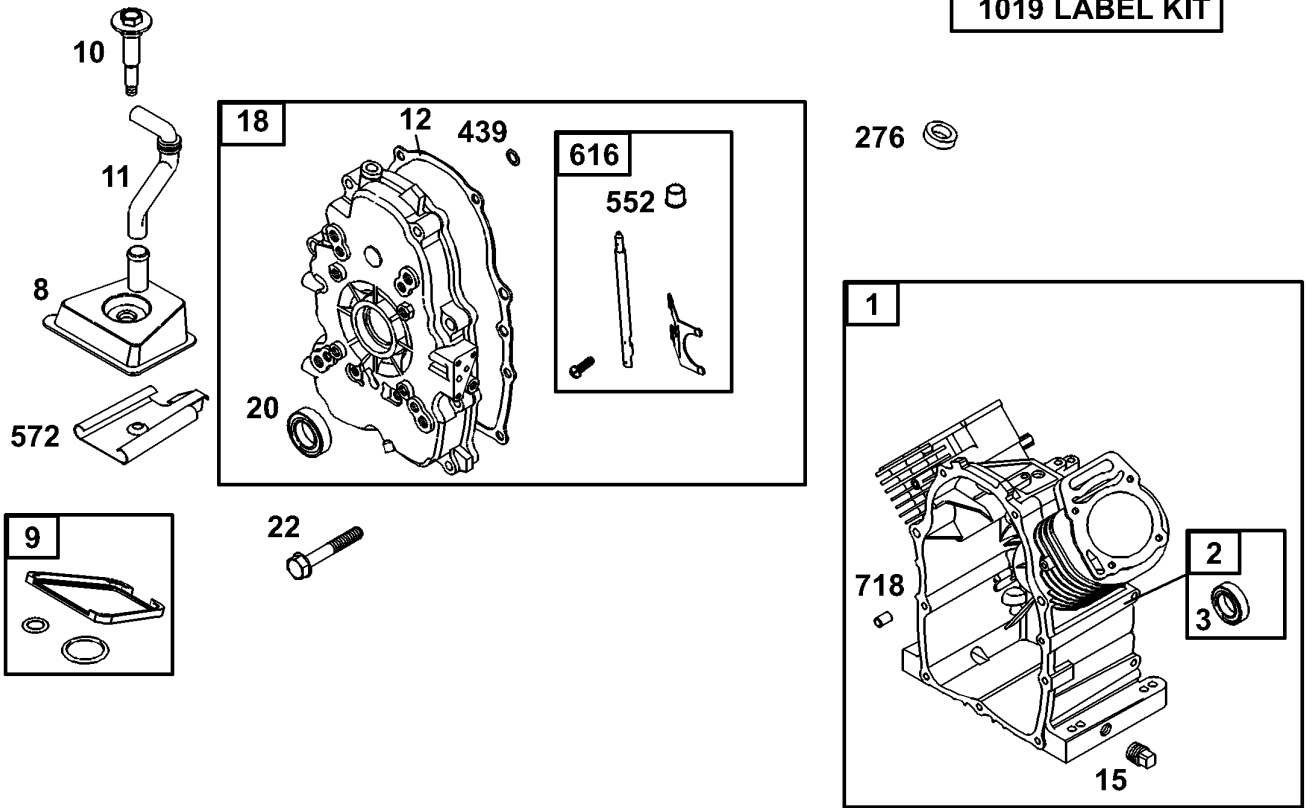
--	--	--	--



Hydraulic Motor Assembly No. 105-9770

Ref	Part No.	Qty.	Description				
1	106-6362	1	Kit-Seal				
② 1:1		2	Seal-Extrusion, Anti				
② 1:2		2	Seal-Pressure Loading				
② 1:3		2	O-Ring				
② 1:4		1	Seal-Shaft				

1019 LABEL KIT

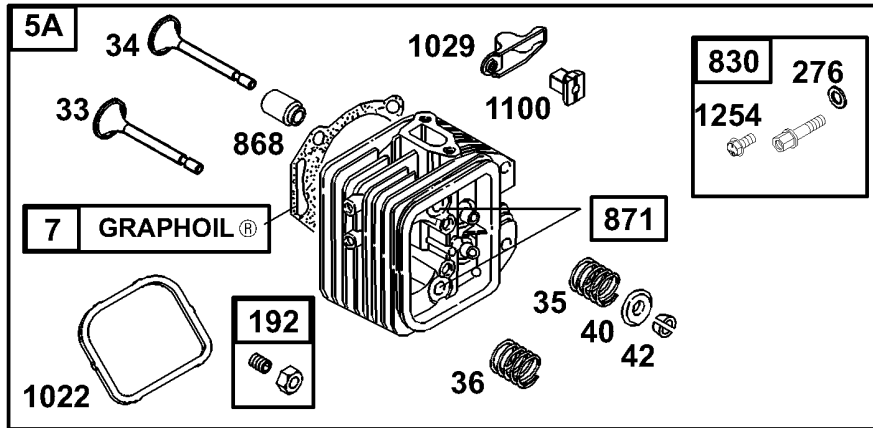
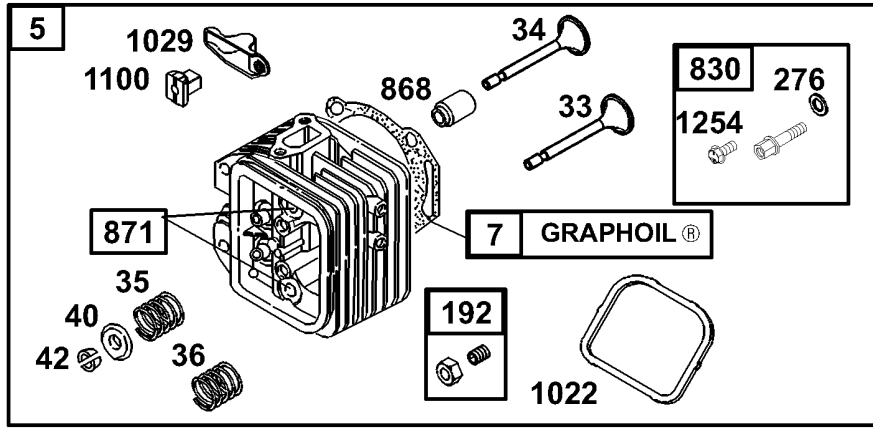


Assemblies include all parts shown in frames.

**Cylinder Assembly
Briggs and Stratton Model 350447-1331-E1**

Ref	Part No.	Qty.	Description
71	692544	1	Cylinder Assembly
72	808534	1	Bushing
73	805101	1	Seal-Oil
78	808984	1	Assembly-Breather
79	809094	1	Valve Cover Gasket
710	690751	1	Screw (Breather Assembly)
711	806083	1	Breather Tube
712	691684	1	Crankcase Gasket
715	690946	1	Plug-Oil Drain
718	808847	1	Cover-Crankcase
720	805049	1	Seal-Oil
722	692540	1	Screw
7276	690704	1	Washer-Sealing
7439	692154	1	O-Ring (Crankcase Cover)
7552	806686	1	Bushing-Governor Crank
7572	690686	1	Baffle-Breather
7616	806685	1	Fork-Governor
7718	806469	1	Locating Pin
71019	808036	1	Kit-Label

--	--	--	--

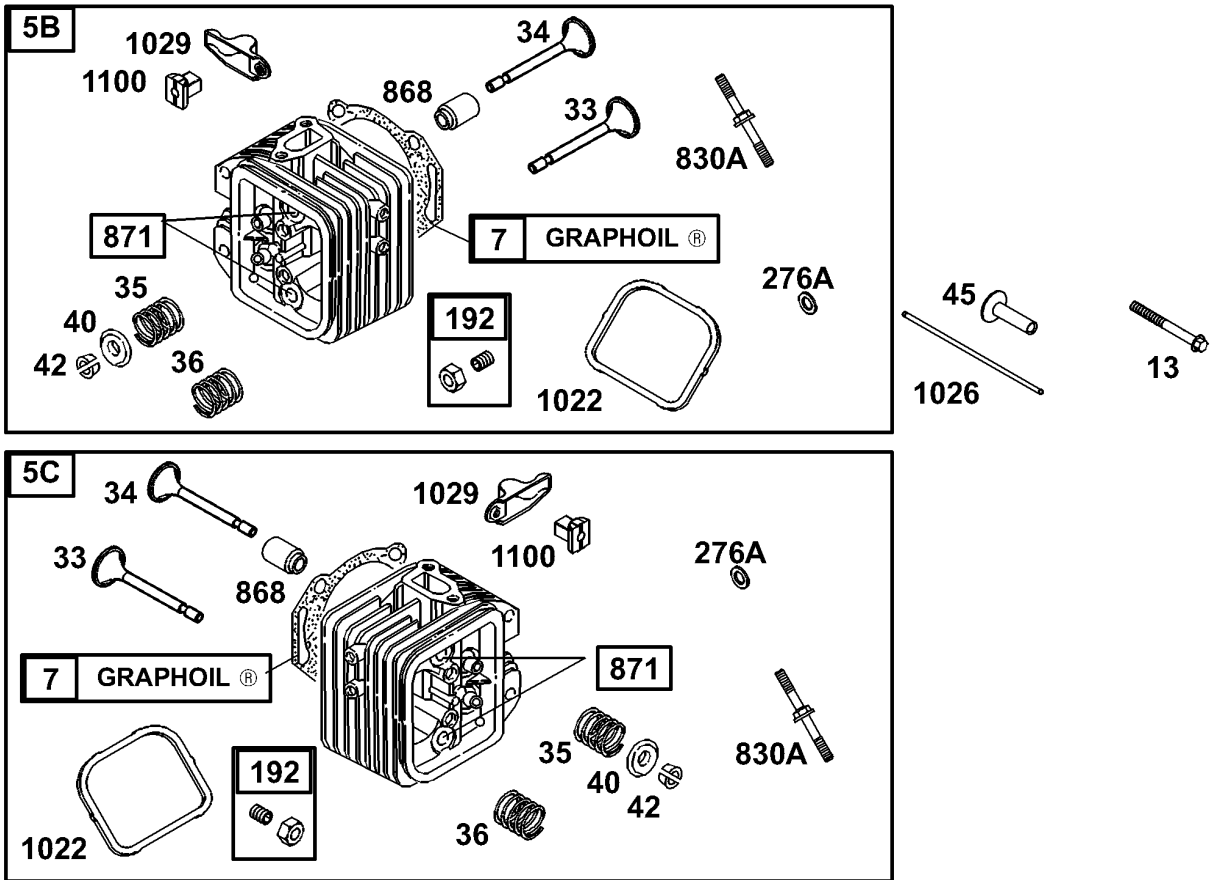


Assemblies include all parts shown in frames.

Cylinder Head Assembly No. 1 Briggs and Stratton Model 350447-1331-E1

Ref	Part No.	Qty.	Description
5	809185	1	Cylinder Head (No. 1)(Used After Date Code 01120200)
5A	809186	1	Cylinder Head (No. 2)(Used After Date Code 01120200)
67	690888	1	Cylinder Head Gasket
13	692059	1	Cylinder Head Screw
33	807681	1	Valve-Exhaust
34	807680	1	Valve-Intake
35	692084	1	Spring-valve(Intake)
36	692084	1	Spring-valve(Intake)
40	692058	1	Retainer-Valve
42	807683	1	Keeper-Valve
45	690977	1	Tappet-Valve
192	807623	1	Screw
276A	807085	1	New Tractor Loose Parts Package 211-5 Only
337	496018	1	Sparkplug
383	19374	1	Wrench-Sparkplug
613	691902	1	Screw (Exhaust Muffler)
635	692076	1	Boot-Sparkplug
830	809157	1	Stud (Rocker Arm)
868	691963	1	Seal-Valve
871	692057	1	Valve Guide
883	691613	1	Exhaust Gasket

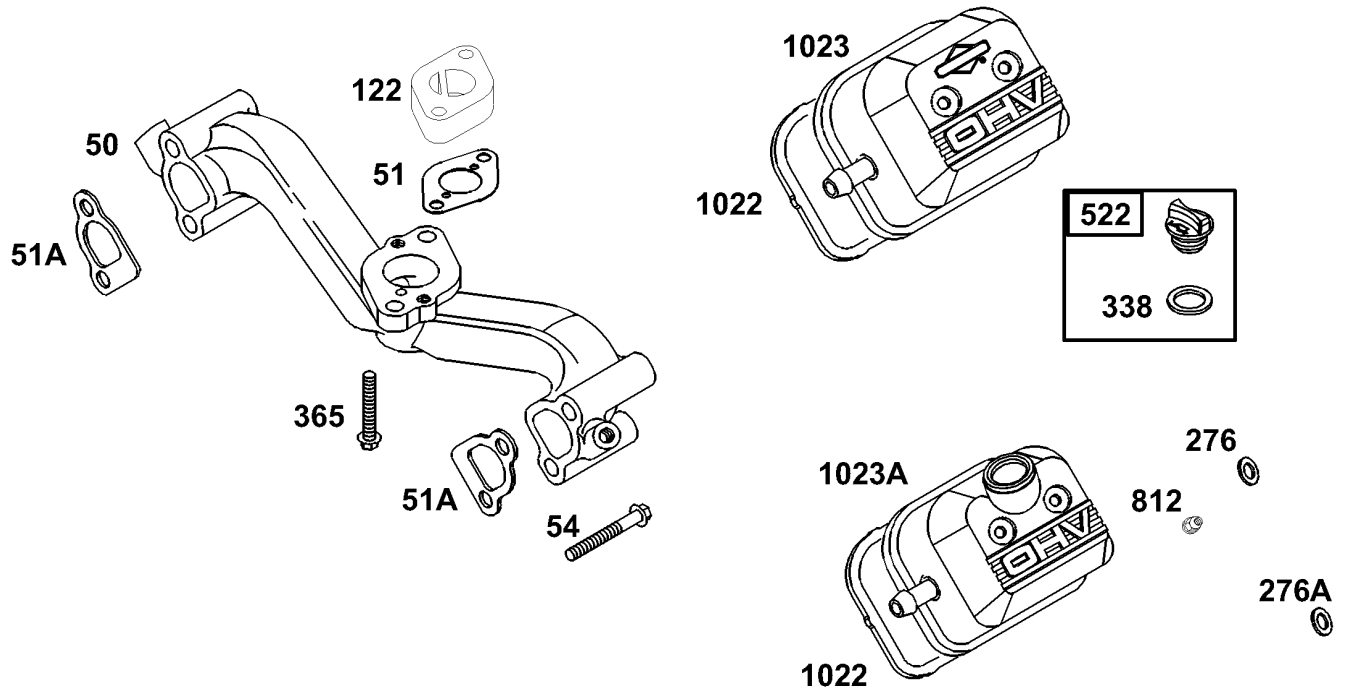
Ref	Part No.	Qty.	Description
61022	806039	1	Gasket-Valve Cover
1026	691836	1	Rod-push(Intake Valve)
	691758	1	Rod-push(Exhaust Valve)
1029	691543	1	Arm-Rocker
1100	690973	1	Pivot-Rocker Arm
1254	807084	1	New Tractor Loose Parts Package 211-3 Only



Assemblies include all parts shown in frames.

Cylinder Head Assembly No. 2 Briggs and Stratton Model 350447-1331-E1

Ref	Part No.	Qty.	Description				
5B	808383	1	Cylinder Head (No. 1)				
5C	808384	1	Cylinder Head (No. 2)				
67	690888	1	Cylinder Head Gasket				
13	692059	1	Cylinder Head Screw				
33	807681	1	Valve-Exhaust				
34	807680	1	Valve-Intake				
35	692084	1	Spring-valve(Intake)				
36	692084	1	Spring-valve(Intake)				
40	692058	1	Retainer-Valve				
42	807683	1	Keeper-Valve				
45	690977	1	Tappet-Valve				
192	807623	1	Screw				
276A	691766	1	Sealing Washer				
830A	691544	1	Stud-Rocker Arm				
868	691963	1	Seal-Valve				
871	692057	1	Valve Guide				
61022	806039	1	Gasket-Valve Cover				
1026	691836	1	Rod-push(Intake Valve)				
	691758	1	Rod-push(Exhaust Valve)				
1029	691543	1	Arm-Rocker				
1100	690973	1	Pivot-Rocker Arm				

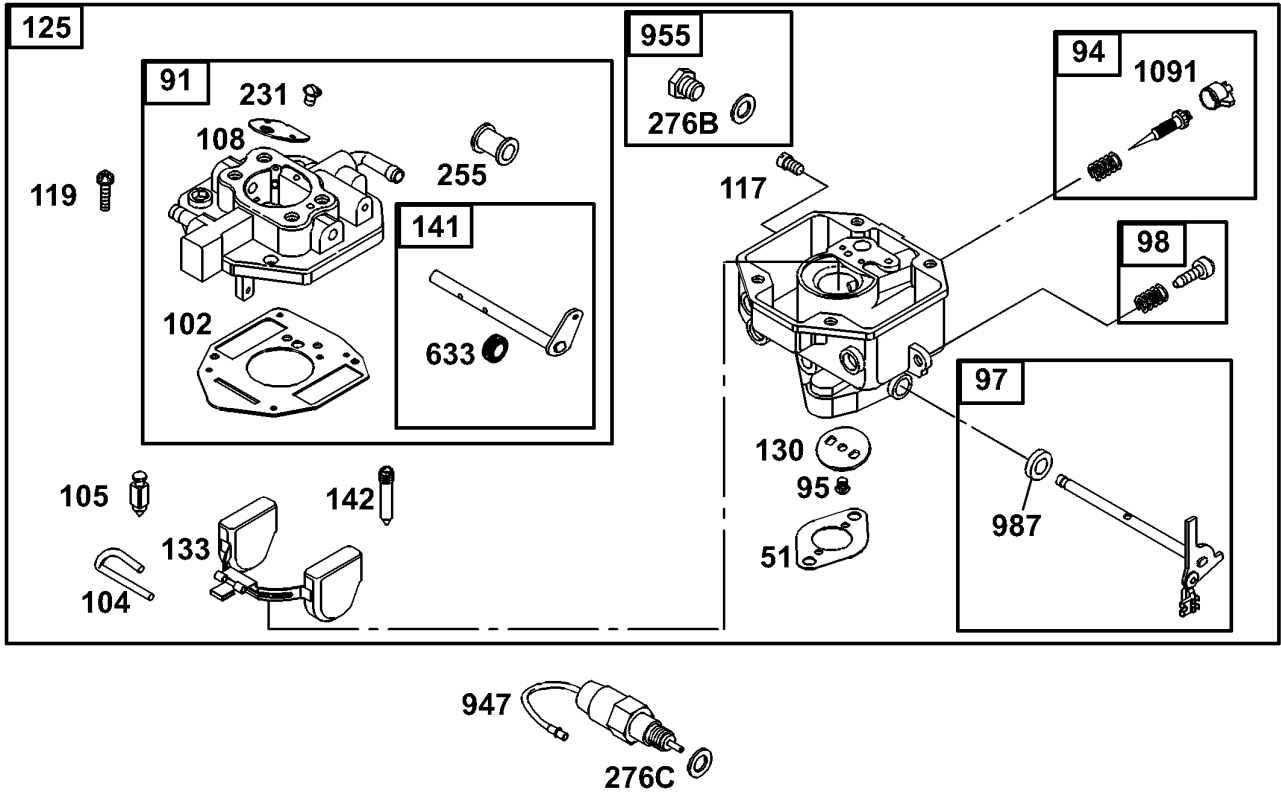


Assemblies include all parts shown in frames.

Intake Manifold and Rocker Cover Assembly Briggs and Stratton Model 350447-1331-E1

Ref	Part No.	Qty.	Description
750	690754	1	Manifold-Intake
751	691694	1	Gasket-Intake
751A	692035	1	Gasket-Intake
754	690676	1	Screw
7122	690691	1	Spacer-Carburetor
7276	807085	1	New Tractor Loose Parts Package 211-5 Only
7276A	691766	1	Sealing Washer
7338	691312	1	Gasket-Dipstick
7365	690711	1	Screw
7522	491832	1	Plug-Oil Filler
7812	692055	1	Nut (Air Cleaner)
71022	806039	1	Gasket-Valve Cover
71023	691494	1	Cover-Valve
71023A	690910	1	Cover-Valve

--	--	--	--

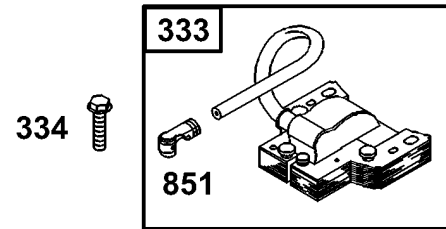
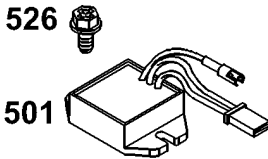
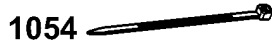
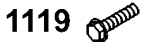
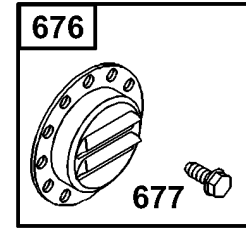
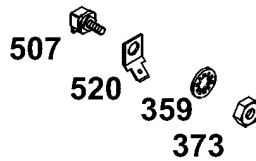
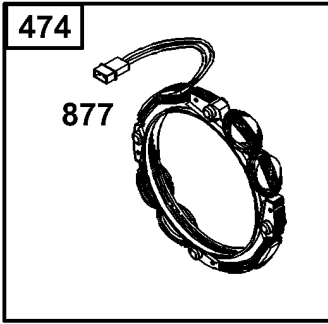


Assemblies include all parts shown in frames.

Carburetor Assembly Briggs and Stratton Model 350447-1331-E1

Ref	Part No.	Qty.	Description
5751	691694	1	Gasket-Intake
791	809208	1	Upper Carburetor Body
5794	808257	1	Idle Mixture Kit
5795	690718	1	Screw (Throttle Valve)
797	808973	1	Throttle Shaft Kit
798	808981	1	Idle Speed Kit
57102	692077	1	Gasket-Carburetorbody
57104	690723	1	Pin-Float Hinge
57105	692078	1	Float Needle Valve
7108	690719	1	Valve-Choke
7109	809096	1	Choke Shaft
57117	808406	1	Main Jet (Standard)
7119	690720	1	Screw
7125	809209	1	Carburetor
7130	690726	1	Valve-Throttle
7133	806961	1	Float-Carburetor
57142	690725	1	Nozzle-Carburetor
57231	690718	1	Screw (Throttle Valve)
57255	690721	1	Bushing-Choke Shaft
57276B	690724	1	Sealing Washer
7276C	806137	1	Washer
57633	690722	1	Seal-Choke Shaft
7947	692094	1	Fuel Solenoid
7955	807723	1	Carburetor Plug

Ref	Part No.	Qty.	Description
57987	806131	1	Seal-Shaft
571091	691516	1	Cap-Limiter

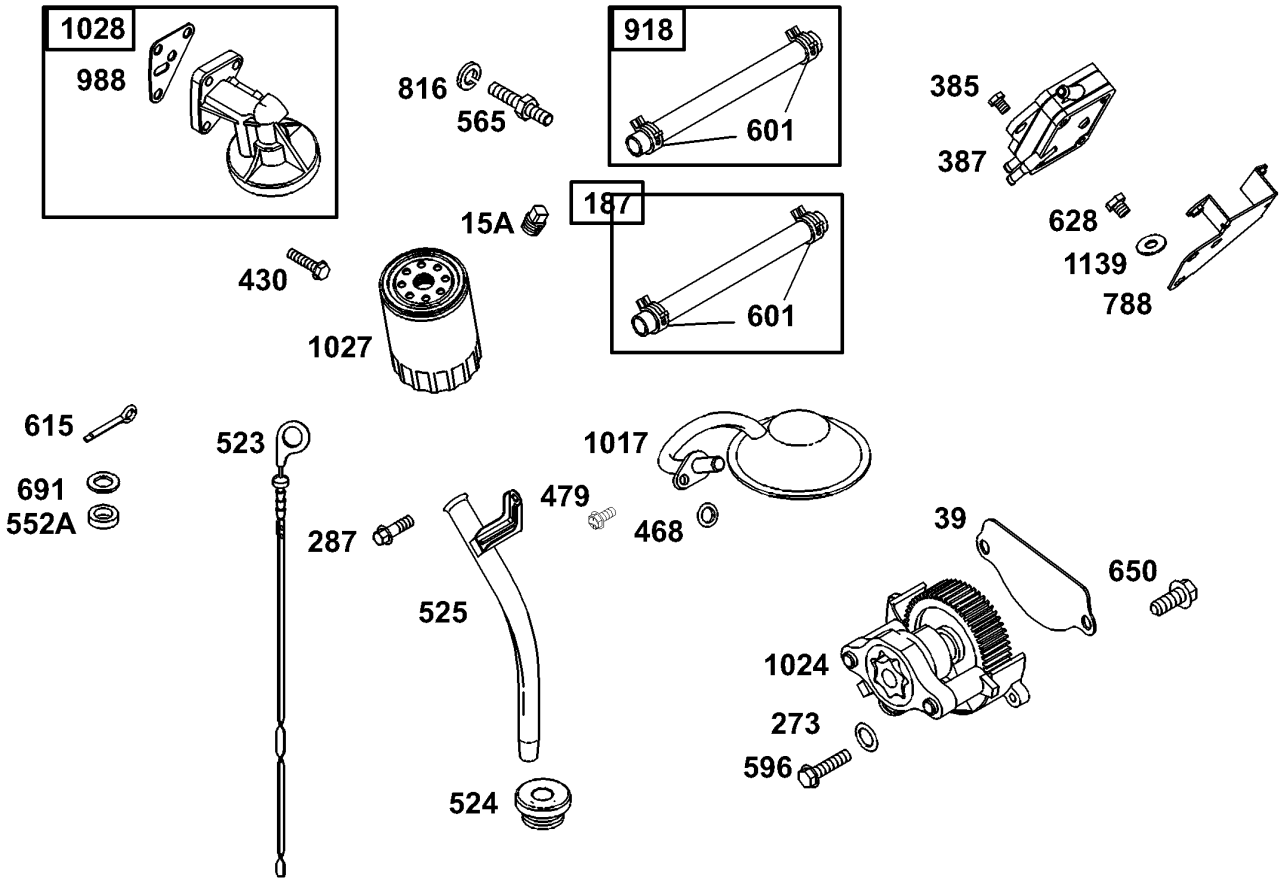


Assemblies include all parts shown in frames.

Alternator Assembly Briggs and Stratton Model 350447-1331-E1

Ref	Part No.	Qty.	Description
333	492341	1	Armature-Magneto
334	692066	1	Screw (Magneto Armature)
359	691077	1	Washer (Groundterminal)
373	691612	1	Nut (Ground Terminal)
474	696458	1	Alternator
501	691185	1	Regulator
507	691972	1	Insulator
520	691084	1	Terminal-Spade
526	692067	1	Screw (Regulator)
529	690744	1	Grommet
578	692319	1	Wire Assembly
676	397630	1	Deflector-Exhaust
677	690661	1	Screw (Flywheel Guard)
729	690586	1	Clip-Wire
851	493880	1	Terminal-Spark Plug
877	399916	1	Wire/connector-Alternator
1054	280275	1	Cable Tie
1119	691552	1	Screw

--	--	--	--

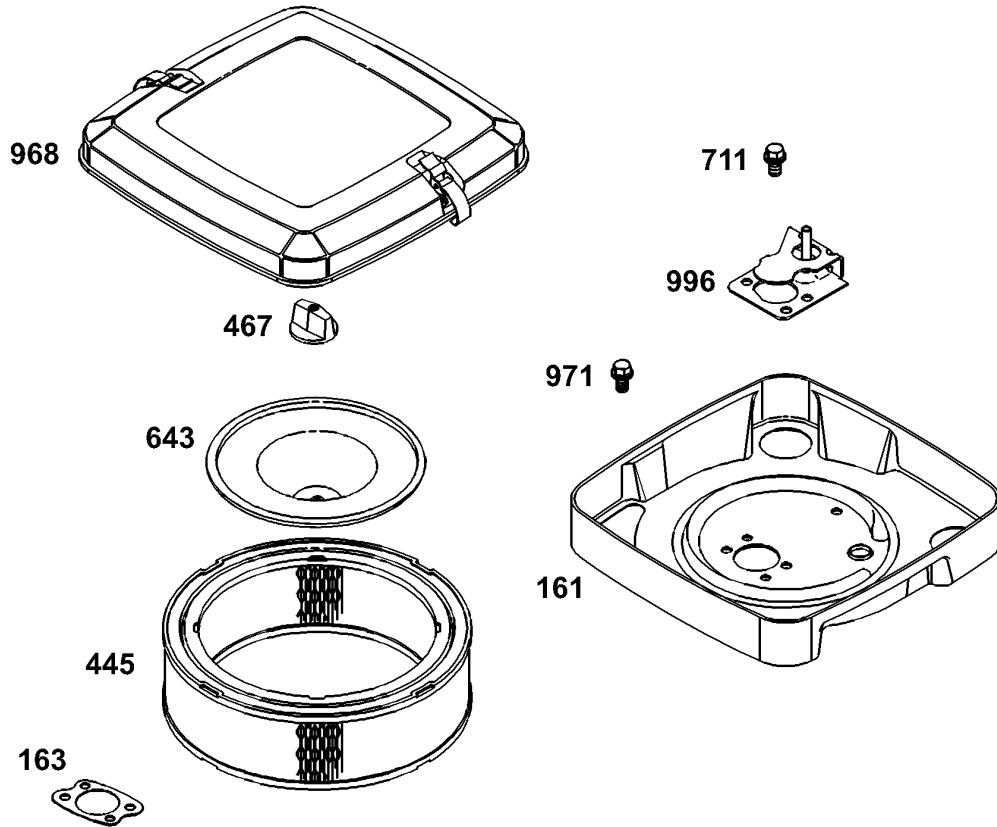


Assemblies include all parts shown in frames.

Fuel Pump, Oil Pump and Dipstick Assembly Briggs and Stratton Model 350447-1331-E1

Ref	Part No.	Qty.	Description
715A	690283	1	Plug-Oil
739	690745	1	Deflector-Oil
7187	691050	1	Line-Fuel (Cut To Required Length)
7273	690681	1	Seal-O Ring (Oil Pump)
7287	692062	1	Screw (Drive Cap)
7385	693169	1	Screw (Fuel Pump)
7387	808969	1	Fuel Pump
7430	690679	1	Bolt (Oil Pump)
7468	690690	1	Screw
7479	807084	1	New Tractor Loose Parts Package 211-3 Only
7523	693175	1	Dipstick
7524	693172	1	Seal-Fill Tube
7525	693174	1	Dipstick Tube
7552A	690701	1	Bushing-Governor Crank
7565	690682	1	Stud (Oil Filter)
7596	691492	1	Screw
7601	691038	1	Clamp-Hose
7615	691550	1	Pin-Cotter
7628	692062	1	Screw (Drive Cap)
7650	692539	1	Screw
7691	690680	1	Seal-Governor Shaft
7788	691559	1	Bracket-Pump
7816	690706	1	Washer

Ref	Part No.	Qty.	Description
7918	393815	1	Hose-Fuel
7988	692063	1	Oil Adapter Gasket
71017	690900	1	Screen-Oil Pump
71024	693185	1	Pump-Oil
71027	492932	1	Filter-Oil
71028	808235	1	Adapter-Oil Filter
71139	806497	1	Washer(Fuel Pump Bracket)

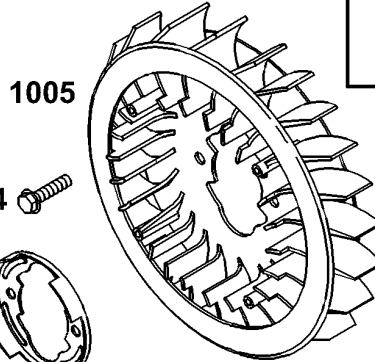
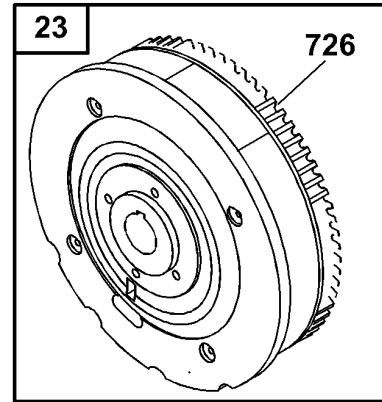
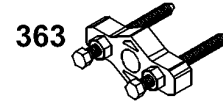
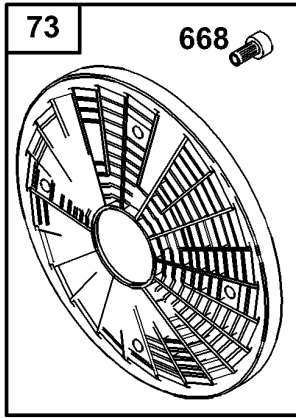


Assemblies include all parts shown in frames.

Air Cleaner Assembly Briggs and Stratton Model 350447-1331-E1

Ref	Part No.	Qty.	Description
●161	691561	1	Base-Air Cleaner
●163	692081	1	Air Cleaner Gasket
●445	394018	1	Filter-Air
●467	691985	1	Air Cleaner Knob
●643	692079	1	Air Filter Retainer
●711	692539	1	Screw
●968	692097	1	Air Cleaner Cover
●971	692537	1	Screw
●996	691577	1	Shield-Carburetor

--	--	--	--

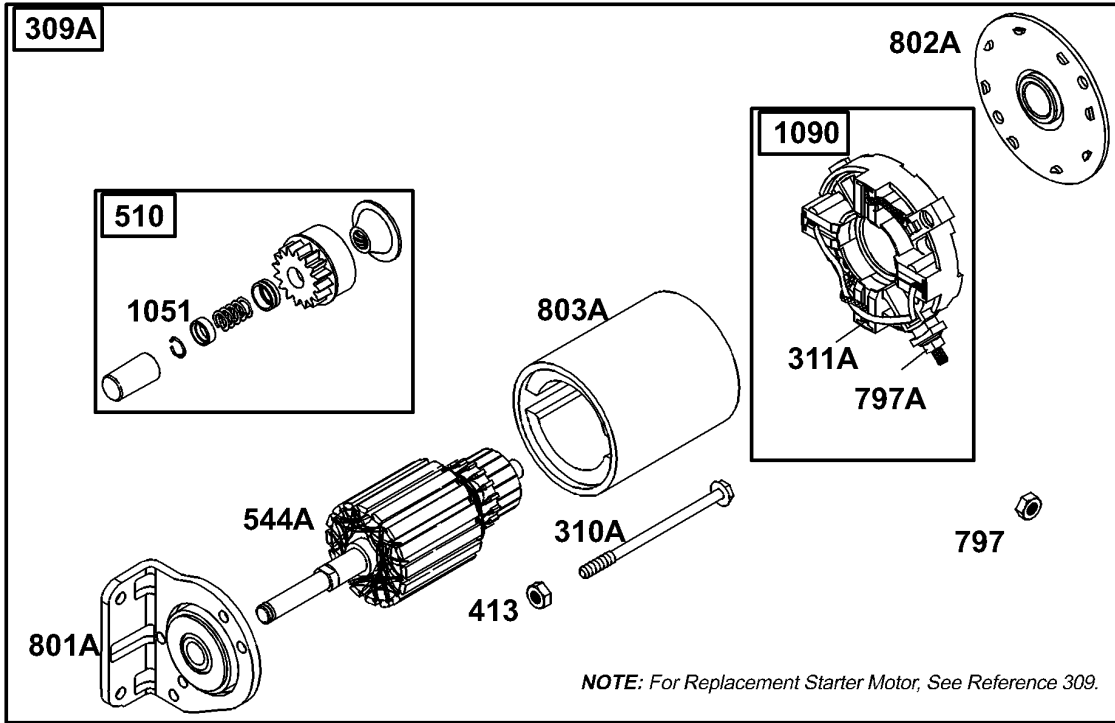


Assemblies include all parts shown in frames.

Flywheel Assembly Briggs and Stratton Model 350447-1331-E1

Ref	Part No.	Qty.	Description
23	808768	1	Flywheel
73	494439	1	Screen-Rotating
74	691647	1	Screw (Rotating Screen)
332	690887	1	Nut
363	19203	1	Puller-Flywheel
668	691500	1	Spacer
726		1	Ring Gear (Sold In Flywheel Kit Only, See Ref. 23)
934	691058	1	Screw (Fan Retainer)
1005	690911	1	Flywheel Fan
1006	690452	1	Retainer-Fan

--	--	--	--

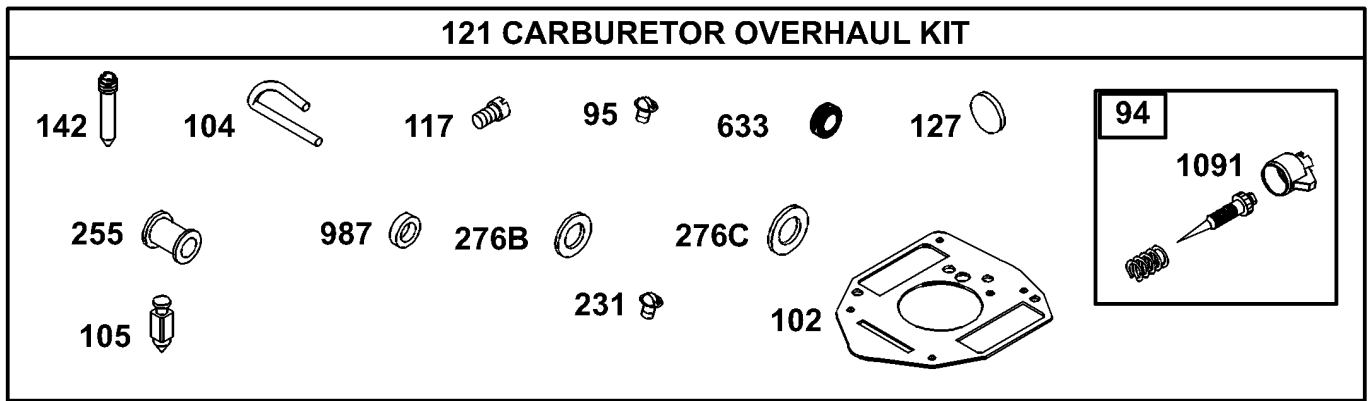


Assemblies include all parts shown in frames.

Starter Assembly Briggs and Stratton Model 350447-1331-E1

Ref	Part No.	Qty.	Description
309A		0	Starter Motor (For Replacement Starter Motor, See Ref. 309)
310A	690323	1	Bolt (Starter Motor)
311A	497608	1	Brush Set
413	693587	1	Nut (Starter Motor)
510	496881	1	Drive-Starter
544A	693548	1	Armature-Starter
797	691029	1	Nut (Brush Retainer)
797A	693167	1	Nut (Brush Retainer)
801A	808777	1	Cap-Drive
802A	691286	1	Cap-End
803A	693547	1	Housing-Starter
1051	691124	1	Lock Ring
1090	691293	1	Retainer-Brush

--	--	--	--



Assemblies include all parts shown in frames.

Carburetor Overhaul Kit Assembly Briggs and Stratton Model 350447-1331-E1

Ref	Part No.	Qty.	Description
94	808257	1	Idle Mixture Kit
95	690718	1	Screw (Throttle Valve)
102	692077	1	Gasket-Carburetorbody
104	690723	1	Pin-Float Hinge
105	692078	1	Float Needle Valve
117	806126	1	Jet-Main
121	808395	1	Carburetor Kit
127	690727	1	Plug-Welch
142	806128	1	Carburetor Nozzle
231	690718	1	Screw (Throttle Valve)
255	690721	1	Bushing-Choke Shaft
276B	690724	1	Sealing Washer
276C	806137	1	Washer
633	690722	1	Seal-Choke Shaft
987	806131	1	Seal-Shaft
1091	691516	1	Cap-Limiter

NOTES

