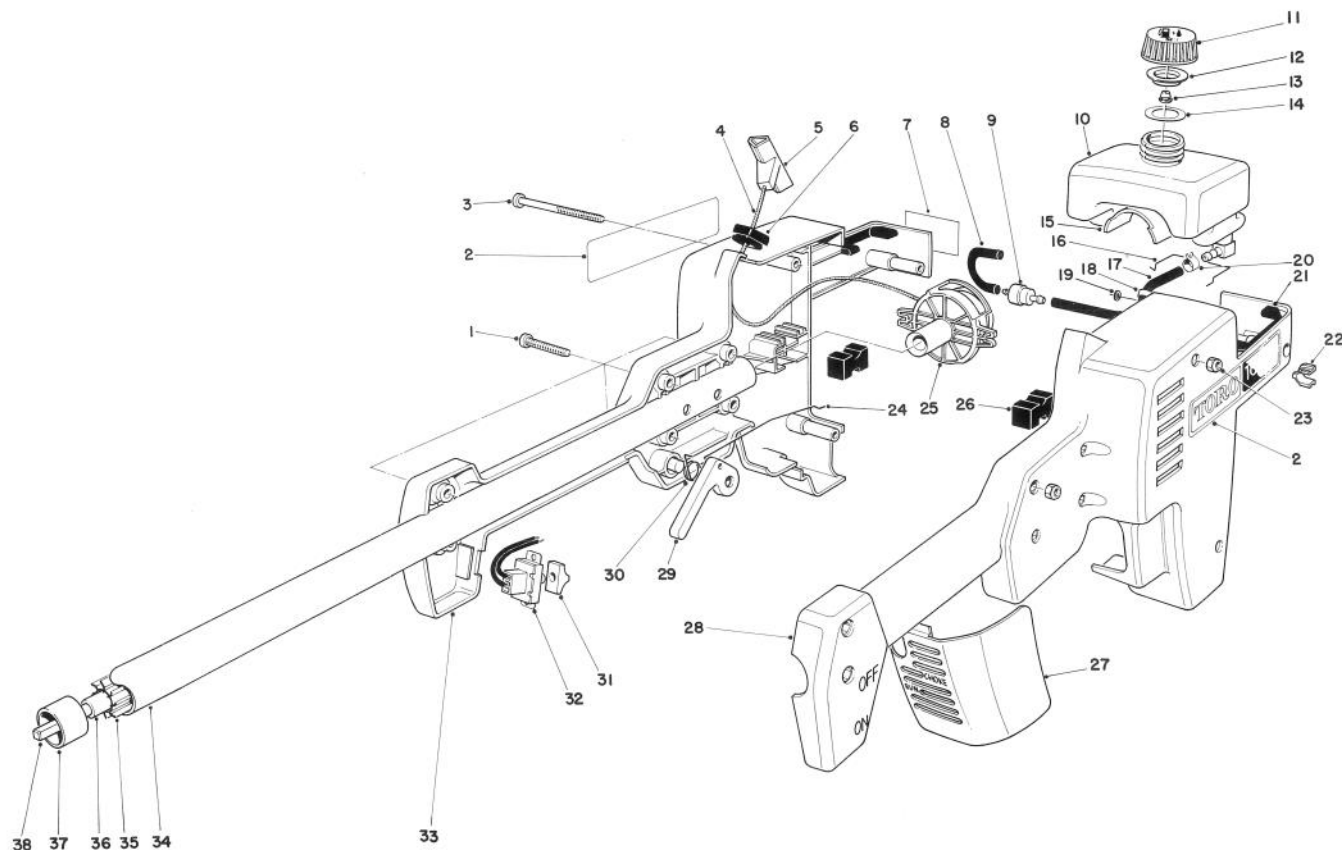




MODEL NO 51616 — 4000001 &amp; UP

# **PARTS CATALOG**

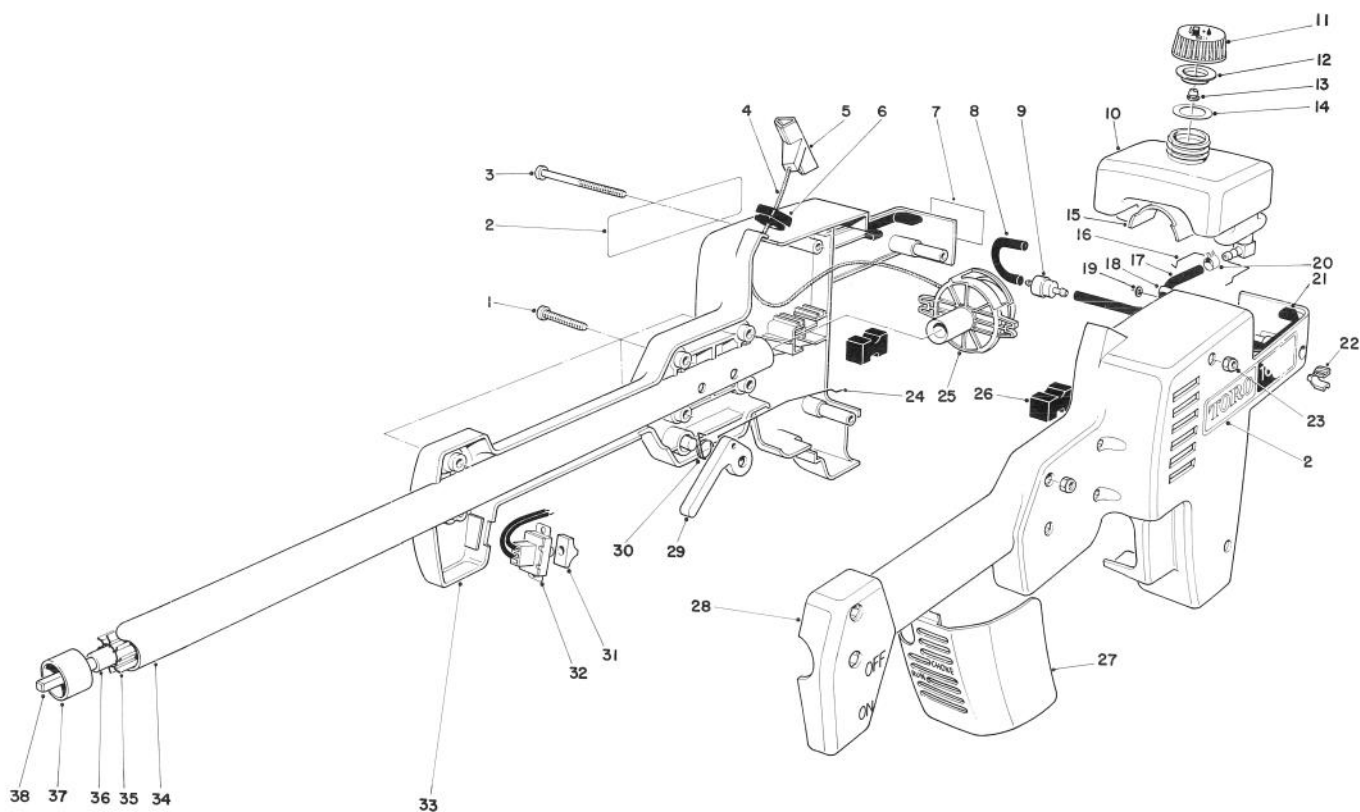
## **TC 650 GAS TRIMMER**



## **ENGINE HOUSING ASSEMBLY**

Ref. No.	Part No.	Description	No. Used
1	46-9780	Screw — Machine Cross Recess Pan Hd.	6
2	47-4690	Decal — TC650	2
3	46-9770	Screw — Machine Cross Recess Pan Hd.	3
4	34-7910	Rope — Starter	1
5	38-6570	Handle	1
6	45-1580	Bushing — Rope	1
7	42-6250	Decal — Hot Surface	1
8	51-1170	Gas Line	1
9	51-1190	Fuel Filter	1
10	42-5600	Tank Gas	1
11	52-3610	Gas Cap Assembly (Incl. Ref. #12-14)	1
12		Insert — Gas Cap	1

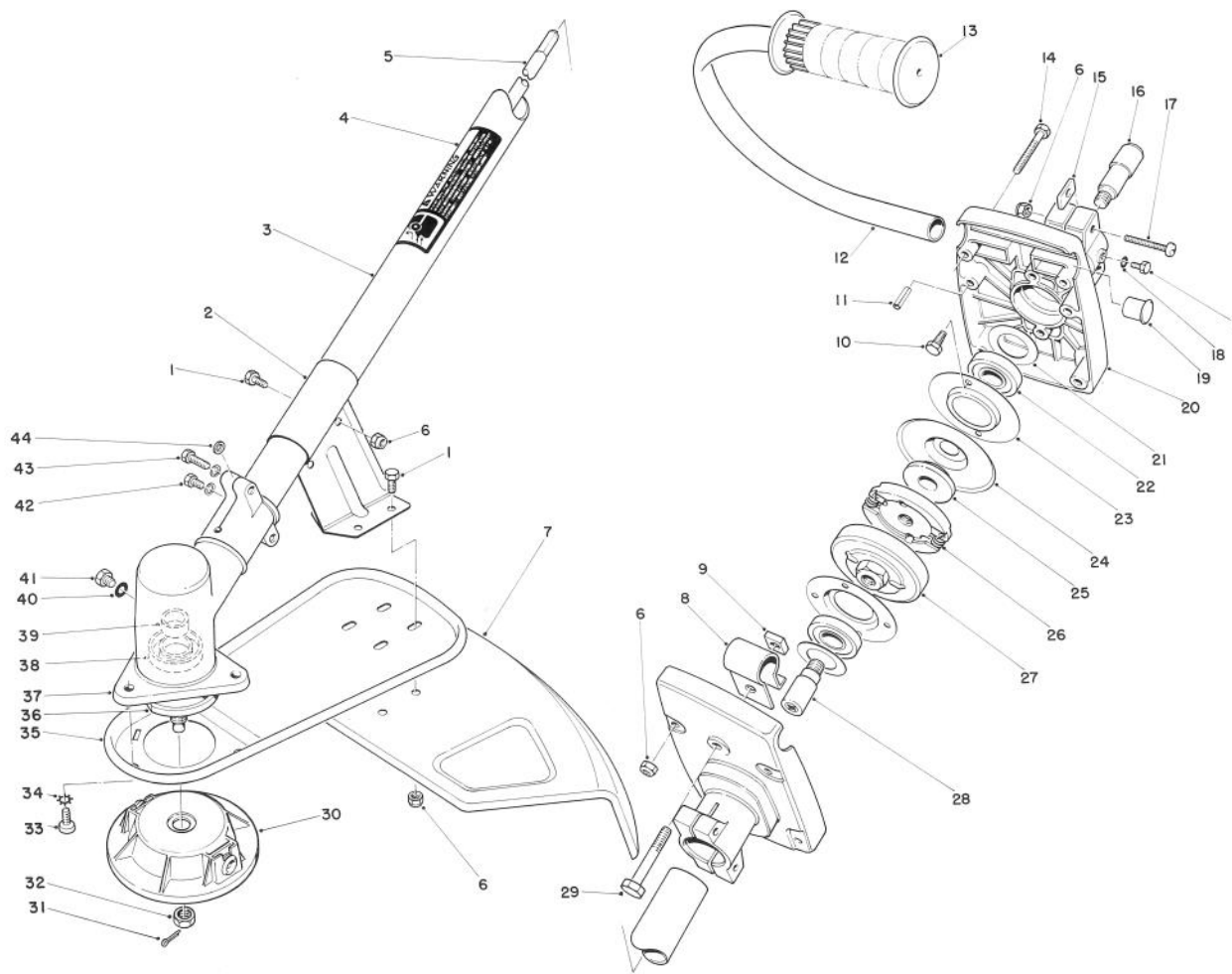
Ref. No.	Part No.	Description	No. Used
13		Valve — Umbrella/Check	1
14	42-5910	Gasket Gas Cap	1
15	42-6240	Pad — Crankcase	1
16	42-6230	Clip — Crankcase Pad	1
17	51-1180	Gas Line	1
18	2412-88	Clamp — Cable	1
19	3290-447	Retainer — Push On	1
20	2412-80	Clamp — Fuel Line	4
21	42-5590	Bumper — Gas Tank	2
22	42-6040	Grommet	1
23	3296-2	Nut — Lock	9
24	44-7430	Link — Throttle	1
25	45-1730	Recoil Assembly (Incl. Ref. #4-6)	1
26	42-5660	Mount — Isolation	4



## ENGINE HOUSING ASSEMBLY (Continued)

Ref. No.	Part No.	Description	No. Used
27	44-6720	Cover — Air Cleaner	1
28	51-1160	Housing — Engine L.H.	1
29	42-5630	Lever — Throttle	1
30	42-5640	Spring — Torsion	1
31	218-507	Cover Switch	1
32	42-6000	Switch	1

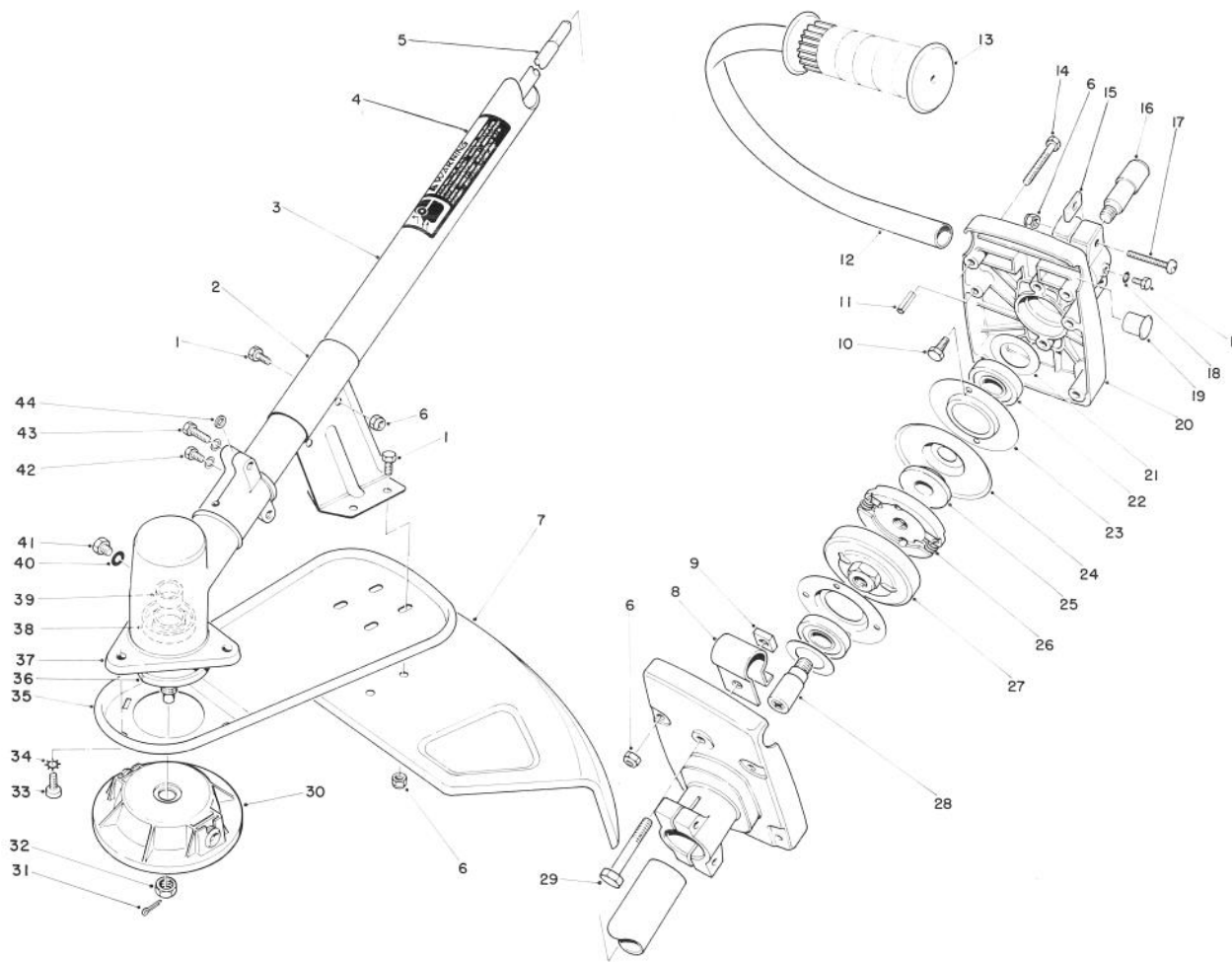
Ref. No.	Part No.	Description	No. Used
33	11-2279	Housing — Engine R.H. (Incl. Ref. #7)	1
34	46-9540	Tube — Upper	1
35	47-2820	Spacer — Shaft	1
36	47-2770	Casing — Shaft	1
37	52-4850	Retaining — Casing	1
38	47-2720	Flexshaft	1



## HANDLE & TRIMMER HEAD ASSEMBLY

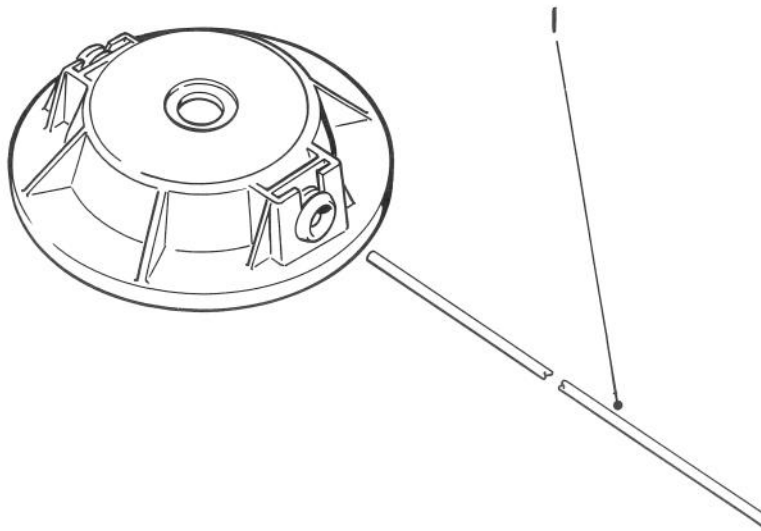
Ref. No.	Part No.	Description	No. Used
1	32105-8	Screw — Machine Hex Hd.	8
2	47-2760	Bracket — Shield	1
3	11-5039	Lower Tube Assembly (Incl. Ref. #4)	1
4	46-9480	Decal — Warning	1
5	47-4720	Drive Shaft	1
6	3296-2	Nut — Lock	14
7	47-2810	Shield — Grass	1
8	46-9610	Clamp — Handle	1
9	32107-5	Nut — Square	1
10	32144-1	Screw — Thread Forming Hex. Hd.	4
11	32121-91	Pin — Spiral	2
12	46-9530	J-Handle	1
13	235-24	Grip	1
14	32105-7	Screw — Machine Hex. Hd.	4
15	47-2730	Washer — Housing	4
16	47-2740	Shaft — Clutch, Input	1
17	46-9780	Screw — Machine, Cross Recess Pan Hd.	4
18	3253-12	Washer — Lock	2
19	47-6690	Plug Cap	1
20	47-2750	Housing—Clutch (Incl. Ref.#21)	2

Ref. No.	Part No.	Description	No. Used
21	42-6030	Washer — Plain	2
22	49-2410	Bearing	2
23	48-2990	Retainer — Bearing	2
24	46-6700	Shield — Clutch	1
25	44-6670	Spacer — Clutch	1
26	47-2850	Clutch Assembly	1
27	46-9600	Drum Assembly	1
28	47-2710	Shaft — Clutch, Output	1
29	322-41	Screw — Cap Hex. Hd.	1
30	51-2760	Cutter Head	1
31	3272-1	Cotter Pin	1
32	41-5410	Nut — Hex, Special L.H. Metric	1
33	47-2830	Screw — Machine Cross Recess Pan Hd. Metric	3
34	3255-17	Washer — Lock, External Tooth	3
35	47-2800	Support Shield	1
36	48-2080	Dust Cap	1
37	46-9690	Gear Case Assembly (Incl. Ref. #32, 36, 38-44)	1
38	48-2090	Oil Seal	1
39	48-2100	Spline Sleeve	1
40	48-2120	Gasket	1
41	48-2110	Screw — Hex. Hd. Machine	1



## HANDLE & TRIMMER HEAD ASSEMBLY (Continued)

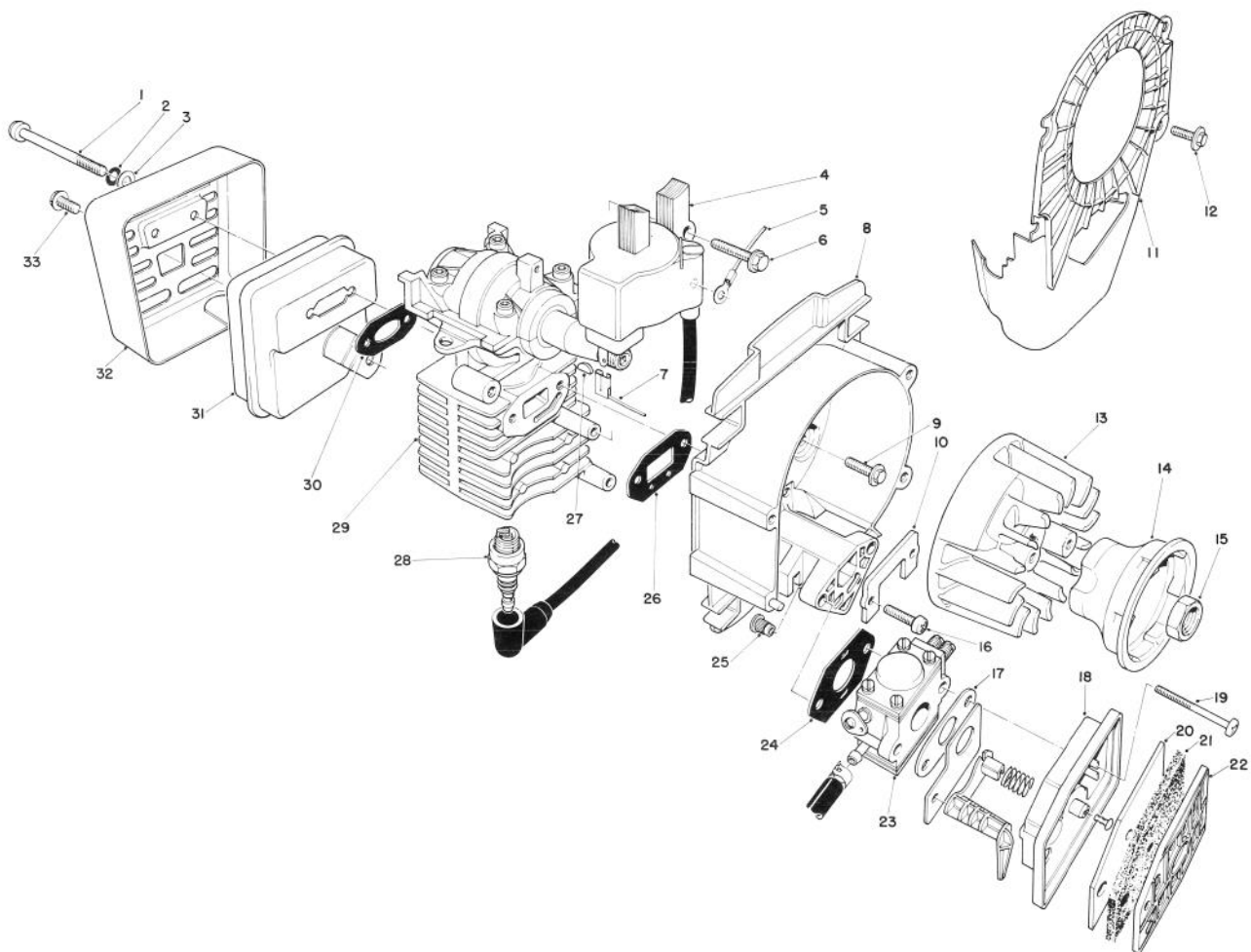
Ref. No.	Part No.	Description	No. Used	Ref. No.	Part No.	Description	No. Used
42	48-2150	Screw — Hex. Hd. Machine w/Washer	1	43	48-2130	Screw — Hex. Hd. Machine w/Washer	2
				44	48-2140	Washer	2



## FIXED LINE HEAD

Ref. No.	Part No.	Description	No. Used	Ref. No.	Part No.	Description	No. Used
1	47-2260	.105 Line (100 pcs.) (optional)	1	*	46-2730	.105 Line (1 lb.) (235 ft.) (optional)	1

\*Not Illustrated

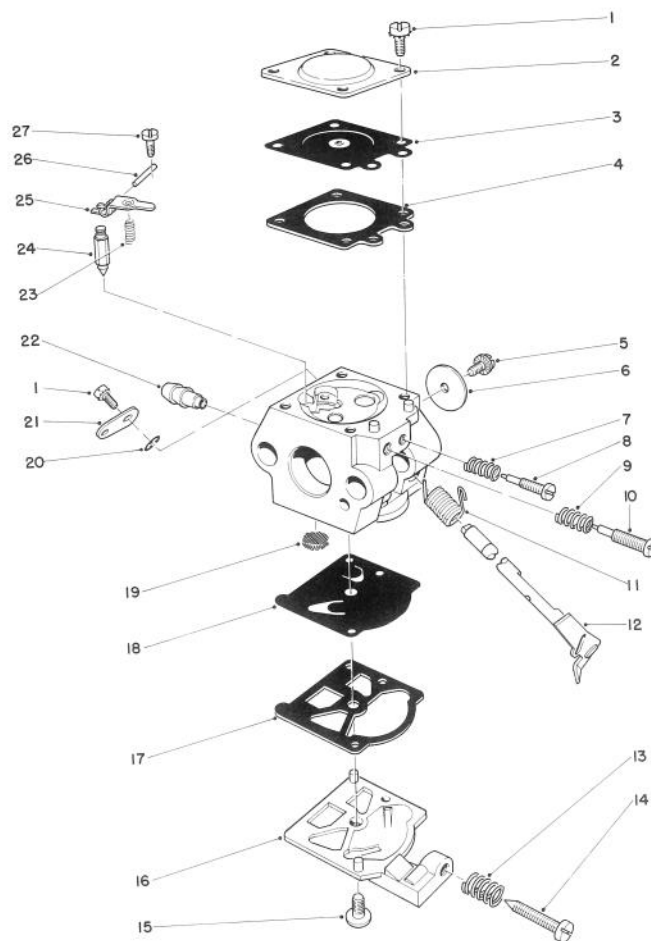


## ENGINE ASSEMBLY

Ref. No.	Part No.	Description	No. Used
1	45-2380	Screw — Muffler	2
2	45-2960	Washer — Lock	2
3	45-2950	Washer — Plain	2
4	45-2290	BIM Module	1
5	45-0610	Wire — Ground/Switch	1
6	45-0640	Screw — C.D.I.	2
7	45-0620	Wire — Coil/Switch	1
8	45-2022	Backing Plate Assembly (Incl. Ref. #25)	1
9	45-0710	Screw — Backing Plate	3
10	45-0540	Plate — Stress	1
11	45-1850	Cooling Shroud	1
12	45-0630	Screw — Shroud	3
13	45-1670	Flywheel	1
14	45-0130	Cup — Starter	1
15	3220-5	Nut — Flywheel	1
16	45-2140	Screw — Intake	2
17	45-1910	Gasket — Choke	1

Ref. No.	Part No.	Description	No. Used
18	45-3000	Choke & Spitback Cup Assy.	1
19	45-2400	Screw — Carburetor	2
20	45-1880	Filter — Felt	1
21	45-1890	Filter — Foam	1
22	45-1900	Cover — Filter	1
23	45-2970	Carburetor	1
24	45-3060	Gasket Carburetor	1
25	45-2110	Insert Threaded	2
26	45-2990	Gasket — Intake	1
27	45-0470	Key — Flywheel	1
28	45-0320	Spark Plug	1
29	45-3080	Short Block	1
30	45-1950	Gasket — Exhaust	1
31	45-2540	Muffler Assembly	1
32	45-2590	Heat Shield — Muffler	1
33	45-2370	Screw — Tab/Cylinder	1
*	45-2610	Engine Complete	1

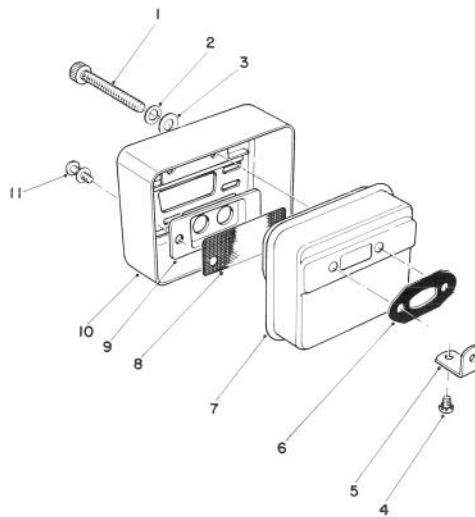
\*Not Illustrated



## CARBURETOR ASSEMBLY NO. 45-2970

Ref. No.	Part No.	Description	No. Used	Ref. No.	Part No.	Description	No. Used
1	41-1070	Screw — Metering Cover & Throttle Lever	5	17	45-2670	Gasket — Fuel Pump	1
2	41-1060	Cover — Metering Diaphragm	1	18	45-2680	Diaphragm — Fuel Pump	1
3	41-1050	Diaphragm Assembly — Metering	1	19	46-4720	Screen — Fuel Inlet	1
4	45-2720	Gasket — Metering Diaphragm	1	20	46-4370	Ring — Throttle Retainer	1
5	45-2780	Screw — Valve	1	21	45-3110	Lever — Throttle	1
6	45-3100	Valve — Throttle	1	22	47-5420	Fitting Fuel Inlet	1
7	45-3140	Spring — Needle (Idle)	1	23	45-2800	Spring — Metering Lever	1
8	45-3150	Needle — Idle	1	24	45-2810	Valve — Inlet Needle	1
9	45-2770	Spring — Needle (Hi)	1	25	41-0880	Lever — Metering	1
10	45-3160	Needle Hi Speed	1	26	41-1020	Pin — Metering Lever	1
11	45-3130	Spring — Throttle Return	1	27	41-1030	Screw — Metering Pin	1
12	46-4660	Shaft Assembly — Throttle	1	*	45-3200	Kit — OEM Repair (Incl. Ref. #1, 4-5, 7-11 17-19 & 23-27)	1
13	46-4700	Spring — Idle Screw	1	*	45-3031	Kit — Gasket/Diaphragm (Incl. Ref. #4, 17 & 18)	1
14	46-4690	Screw — Idle Adjust	1	*	45-3210	Kit — Nozzle Check Valve	1
15	41-0700	Screw — Pump Cover	1	*	46-4730	Kit — Screen & Clip	1
16	45-3090	Cover — Fuel Pump	1	*	46-4750	Kit — Kwik Repair	1

\*Not Illustrated

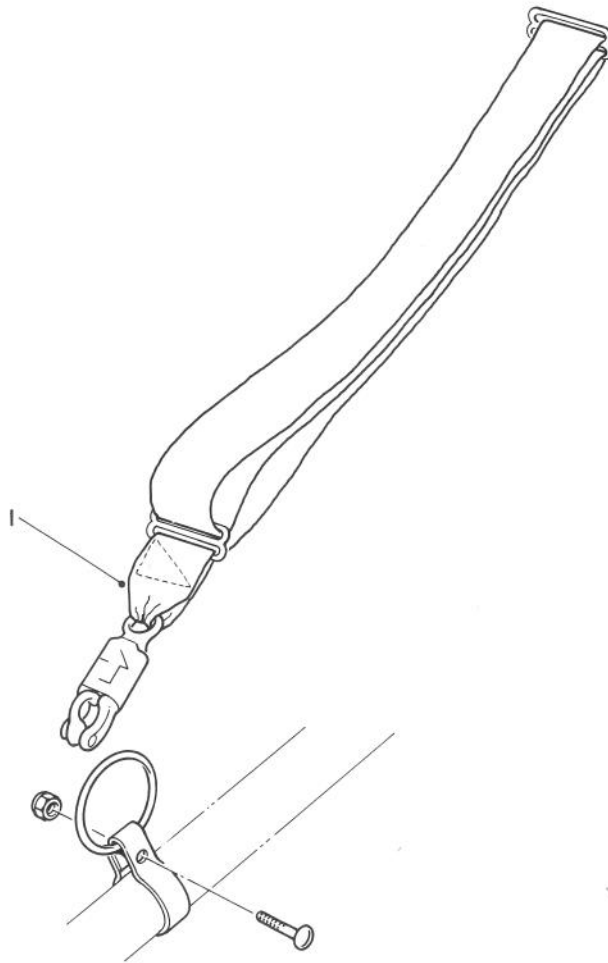


## SPARK ARRESTER MUFFLER KIT NO. 45-2630

Ref. No.	Part No.	Description	No. Used
1	45-1450	Screw — Muffler	2
2	3253-17	Washer — Lock	2
3	3256-51	Washer — Plain	2
4	45-1530	Screw — Heat Shield	1
5	45-1500	Tab — Heat Shield	1
6	45-1950	Exhaust Gasket	1

Ref. No.	Part No.	Description	No. Used
7†		Muffler Assembly	1
8	45-2390	Arrestor — Spark	1
9	45-1190	Plate — Outlet	1
10	46-1360	Heat Shield	1
11	32140-102	Screw — Outlet	2

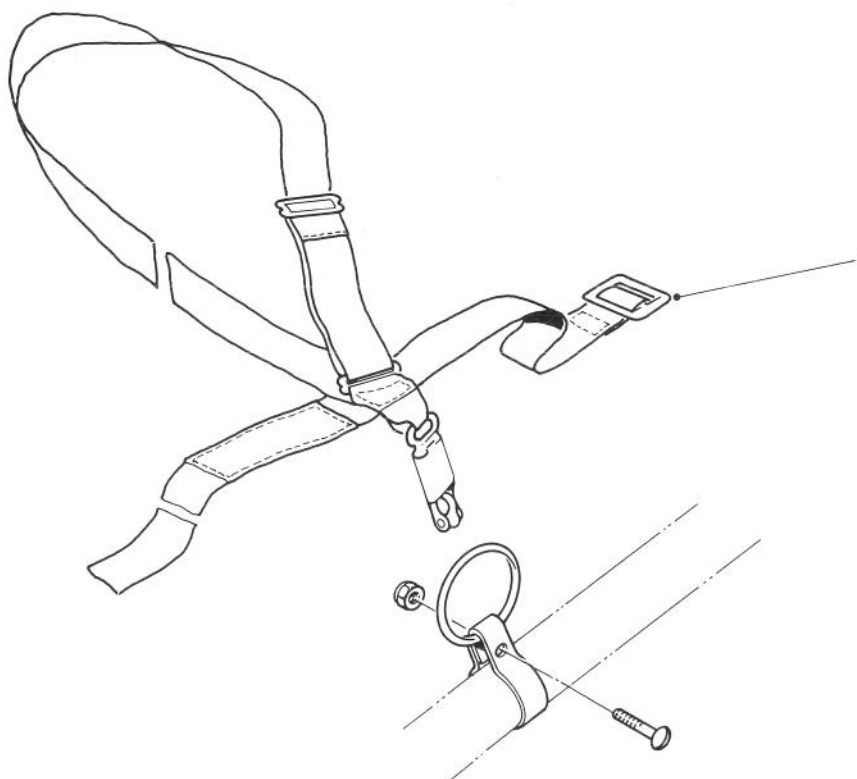
†Note: Order Muffler Kit 45-2630.



### STANDARD HARNESS NO. 46-2950 (Optional)

Ref. No.	Part No.	Description	No. Used
1	46-2950	Standard Harness	1

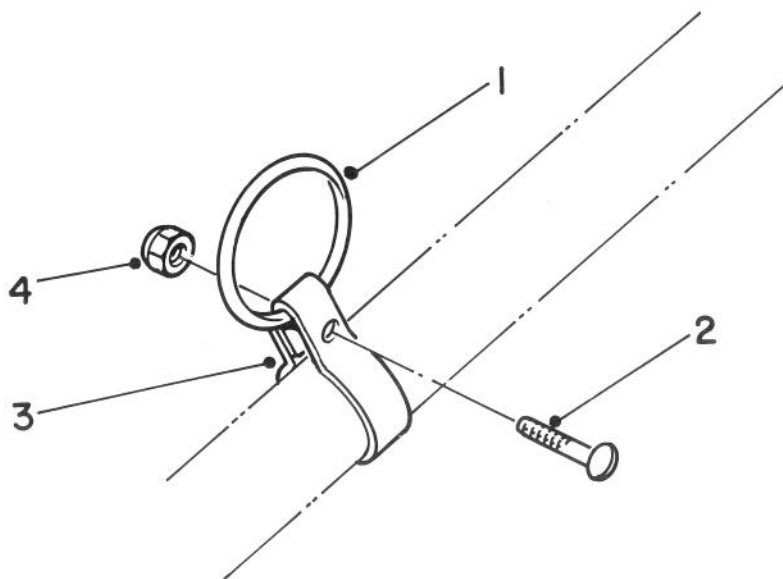
Ref. No.	Part No.	Description	No. Used



### DELUXE HARNESS NO. 46-2960 (Optional)

Ref. No.	Part No.	Description	No. Used
1	46-2960	Deluxe Harness	1

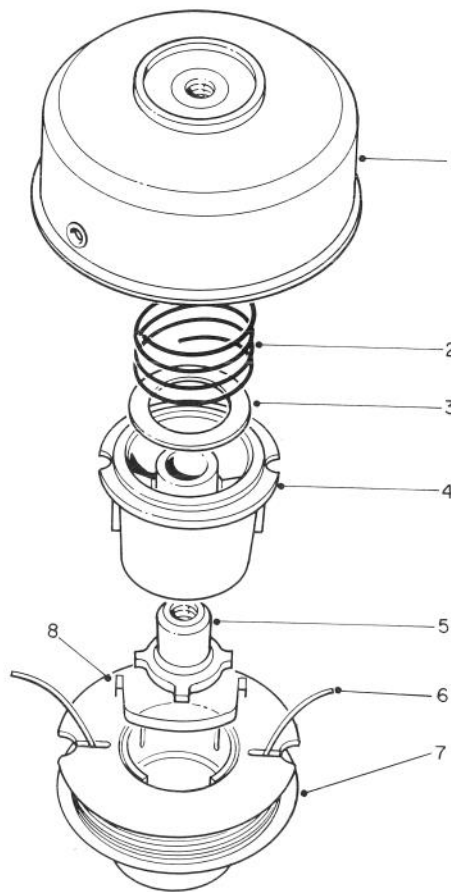
Ref. No.	Part No.	Description	No. Used



### CLAMP & RING KIT NO. 46-2690 (Optional)

Ref. No.	Part No.	Description	No. Used
1	3251-4	Ring	1
2		Screw	1

Ref. No.	Part No.	Description	No. Used
3	3296-12	Clamp	1
4		Nut	1

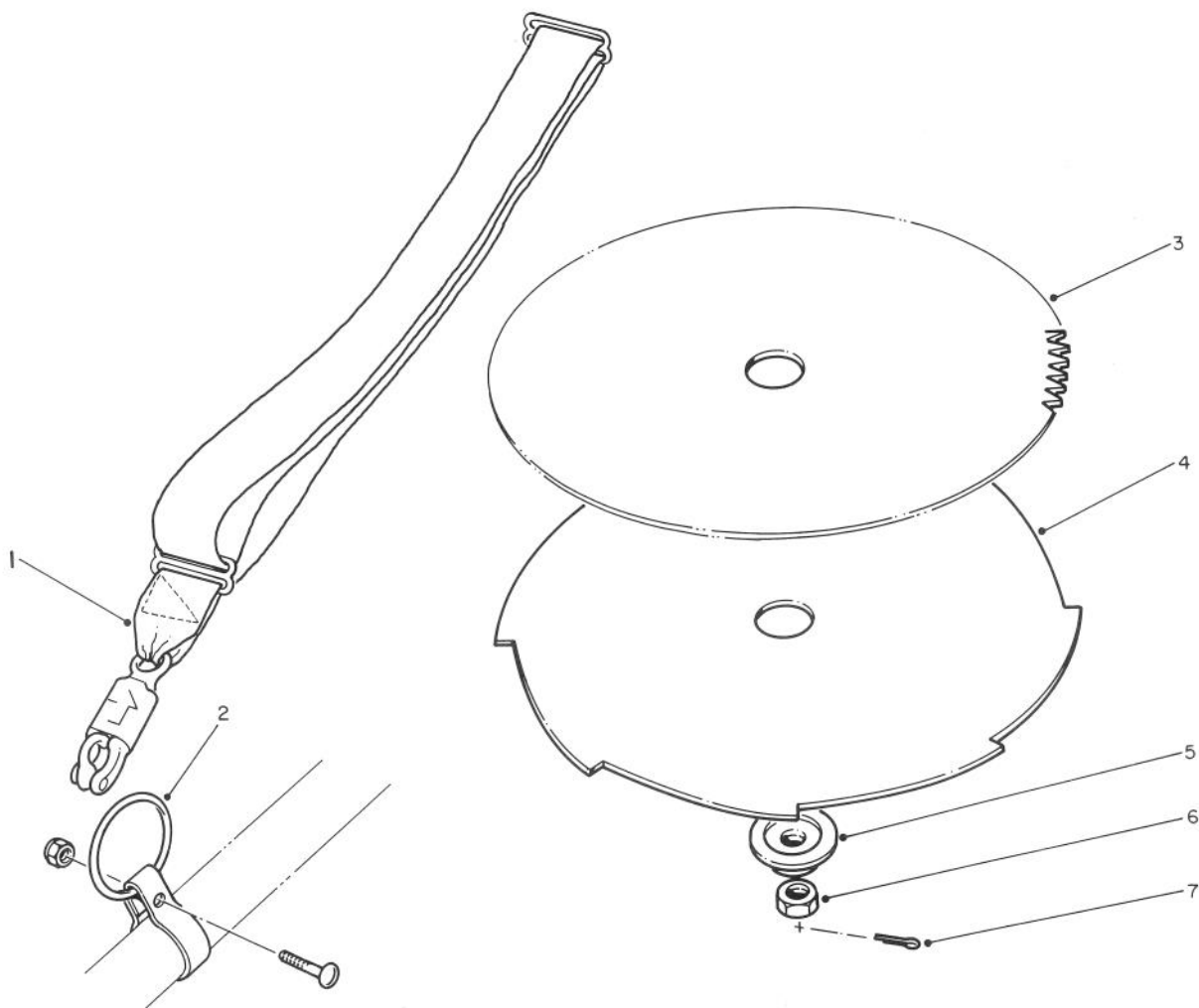


## TAP AND TRIM HEAD 46-2800 (Optional)

Ref. No.	Part No.	Description	No. Used
1	46-2650	Drum Assembly w/Eyelet	1
2	33-6460	Spring	1
3	3256-42	Washer	1
4	33-6230	Spool Core	1
5	33-6470	Driver L.H.	1

Ref. No.	Part No.	Description	No. Used
6	43-5000	.080 Filament Line in Coil (38 ft.)	1
*	46-2710	.080 Filament Line in 1 lb. pkg. (400 ft.)	1
7	46-2820	Prewound Spool	1
8	33-8940	Saddle — Spool Cap	1

\* Not Illustrated

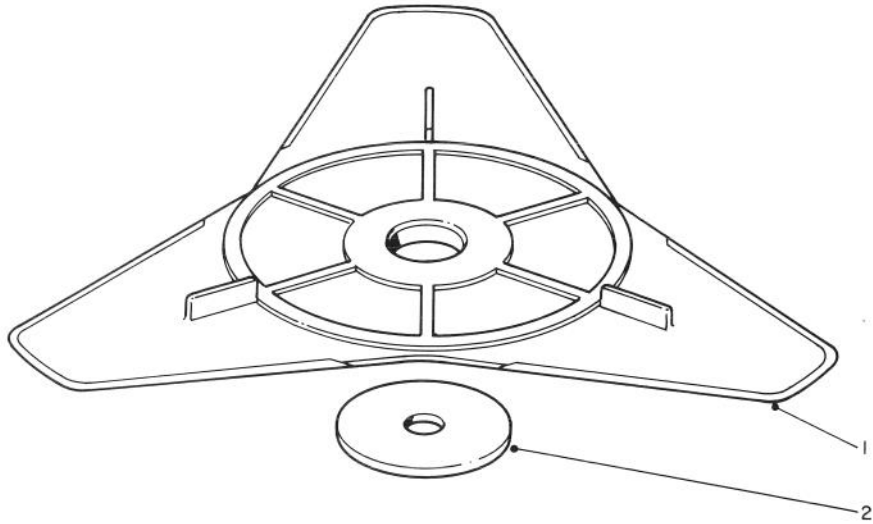


### METAL BLADE KIT 51-0170 (Optional)

Ref. No.	Part No.	Description	No. Used
1	44-7560	Shoulder Strap	1
2	46-2690	Harness Ring Kit	1
3	51-1230	8" Blade (80 T.)	1
4	51-1240	8" Blade (8 T.)	1
5		Blade Adapter	1

Ref. No.	Part No.	Description	No. Used
6	41-5410	Nut — Special, L.H. Metric	1
7	3272-3	Cotter Pin	1
*	41-4440	Blade Adapter Kit (Incl. Ref. #5-7) (optional)	1

\*Not Illustrated



### **FLEX BLADE KIT NO. 44-9870 (Optional)**

Ref. No.	Part No.	Description	No. Used
1	46-2790	Flex Blade	1

Ref. No.	Part No.	Description	No. Used
2	41-4430	Washer	1

## PRODUCT CHANGES

In an effort to make improvements available to TORO owners as quickly as possible, minor changes are incorporated into Toro's products from time to time that do not become immediately shown in the Parts Catalog. If such a change apparently has been made in your unit, which is not reflected in your manual, see your TORO Distributor or his Authorized TORO Service Dealer for information and part numbers.

## IDENTIFICATION AND ORDERING

### MODEL AND SERIAL NUMBERS

The Trimmer has two identification numbers: a model number and a serial number. The two numbers are stamped on a decal which is located on the lower rear of handle shaft. In any correspondence concerning the trimmer, supply model and serial numbers to assure that correct information and replacement parts are obtained.

To order replacement parts from an Authorized TORO Service Dealer, supply the following information:

1. Model and serial numbers of the trimmer.
2. Part number, description, and quantity of part(s) desired.

**Note:** Do not order by reference number if a parts catalog is being used; use the PART NUMBER.

## The Toro Promise

### TORO GAS TRIMMER/WEEDER A ONE YEAR LIMITED WARRANTY

*The Toro Company promises to repair your TORO Product if defective in materials or workmanship. The following time periods from the date of purchase apply:*

Residential Product . . . . .	1 Year
Residential Products Used Commercially . . . . .	45 Days

*The costs of parts and labor are included, but the customer pays the transportation costs. Just return any residential product to an Authorized TORO Service Dealer or TORO Distributor.*

Should you feel your TORO Product is defective and wish to rely on The Toro Promise, the following procedure is recommended:

1. Contact any Authorized TORO Service Dealer, TORO Master Service Dealer, or TORO Distributor (the Yellow Pages of your telephone directory is a good reference source).
2. He will either instruct you to return the product to him or recommend another Authorized TORO Service outlet which might be more convenient.
3. Bring the product along with your original sales slip, or other evidence of purchase date, to the service dealer.
4. The servicing dealer will inspect the unit, advise you whether the product is defective and, if so, make all repairs necessary to correct the defect without extra charge to you.

If for any reason you are dissatisfied with the dealer's analysis of the defect or the service performed, you may contact us.

Write:

TORO Consumer Service Department  
8111 Lyndale Avenue South  
Minneapolis, Minnesota 55420

The above remedy of product defects through repair by an Authorized TORO Service Dealer is the purchaser's sole remedy for any defect.

**THERE IS NO OTHER EXPRESS WARRANTY. ALL IMPLIED WARRANTIES OF MERCHANTABILITY AND**

**FITNESS FOR USE ARE LIMITED TO THE DURATION OF THE EXPRESS WARRANTY.**

Some states do not allow limitations on how long an implied warranty lasts, so the above limitation may not apply to you.

This warranty applies only to parts or components which are defective and does not cover repairs necessary due to normal wear, misuse, accidents, or lack of proper maintenance. Regular, routine maintenance of the unit to keep it in proper operating condition is the responsibility of the owner.

All warranty repairs reimbursable under The Toro Promise must be performed by an Authorized TORO Service Dealer using Toro approved replacement parts.

Repairs or attempted repairs by anyone other than an Authorized TORO Service Account are not reimbursable under The Toro Promise. In addition, these unauthorized repair attempts may result in additional malfunctions, the correction of which is not covered by warranty.

**THE TORO COMPANY IS NOT LIABLE FOR INDIRECT, INCIDENTAL OR CONSEQUENTIAL DAMAGES IN CONNECTION WITH THE USE OF THE PRODUCT INCLUDING ANY COST OR EXPENSE OF PROVIDING SUBSTITUTE EQUIPMENT OR SERVICE DURING PERIODS OF MALFUNCTION OR NON-USE.**

Some states do not allow the exclusion or limitation of incidental or consequential damages, so the above limitation or exclusion may not apply to you.

This warranty gives you specific legal rights, and you may also have other rights which vary from state to state.

## COUNTRIES OTHER THAN THE UNITED STATES OR CANADA

Customers who have purchased TORO products exported from the United States or Canada should contact their TORO Distributor (Dealer) to obtain guarantee policies for your country, province or state. If for any reason

you are dissatisfied with your Distributor's service or have difficulty obtaining guarantee information, contact the TORO importer. If all other remedies fail, you may contact us at The Toro Company.

[illegible]