

Jack Mount Kit
Kit No. 146-0696

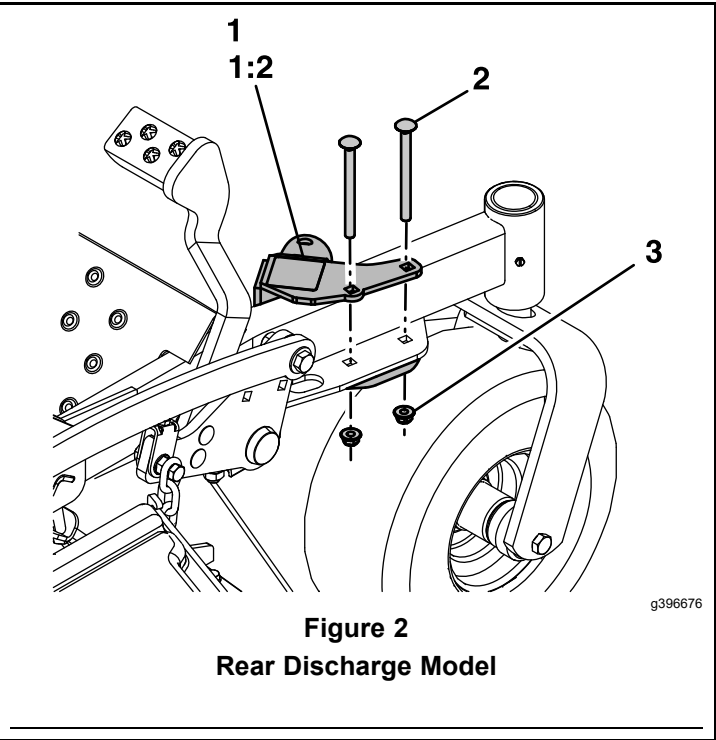
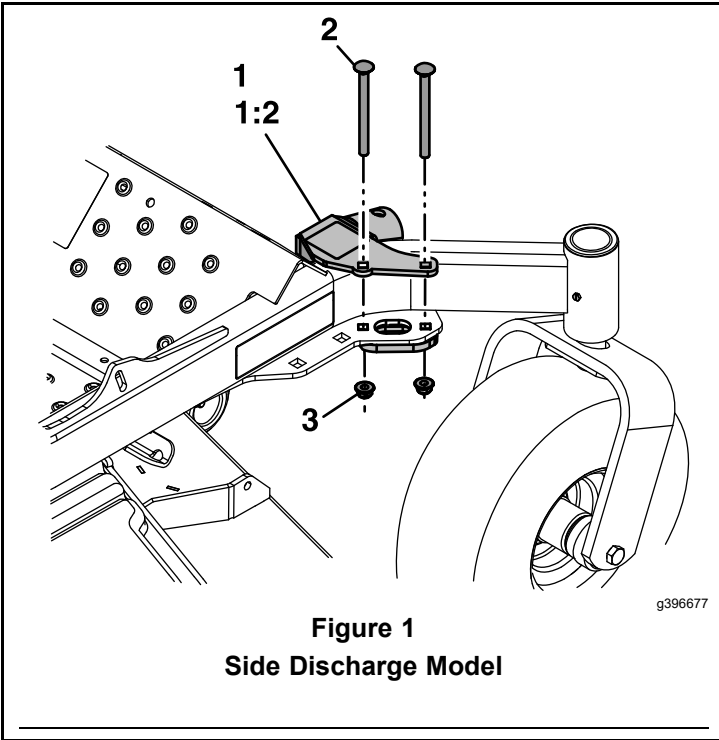
Installation Instructions

Loose Parts

Use the chart below to verify that all parts have been shipped.

Item No.	Part No.	Description	Qty
1	146-0696	Kit-Jack Mount W/Decal	1
1:2	127-6663	Decal-Warning, Jack	1

Item No.	Part No.	Description	Qty
2	9000779	Bolt-Carriage 3/8-16 x 4 1/2	3
3	104-8301	Nut-Nyloc 3/8-16 Flg	3



Other Required Parts

This mount is only approved for use with Jack Kit P/N 127-6666.



Safety Alert Symbol

This Safety Alert Symbol (Figure 3) is used both in this instruction sheet and on the machine to identify important safety messages which must be followed to avoid accidents

This symbol means: **ATTENTION! BECOME ALERT! YOUR SAFETY IS INVOLVED!**



g000502

Figure 3
Safety Alert Symbol

The safety alert symbol appears above information which alerts you to unsafe actions or situations and will be followed by the word **DANGER**, **WARNING**, or **CAUTION**.

DANGER: Indicates an imminently hazardous situation which, if not avoided, **Will** result in death or serious injury.

WARNING: Indicates a potentially hazardous situation which, if not avoided, **Could** result in death or serious injury.

CAUTION: Indicates a potentially hazardous situation which, if not avoided, **May** result in minor or moderate injury.

This manual uses two other words to highlight information. **Important** calls attention to special mechanical information and **Note** emphasizes general information worthy of special attention.

WARNING

While maintenance or adjustments are being made, someone could start the engine. Accidental starting of the engine could seriously injure you or other bystanders.

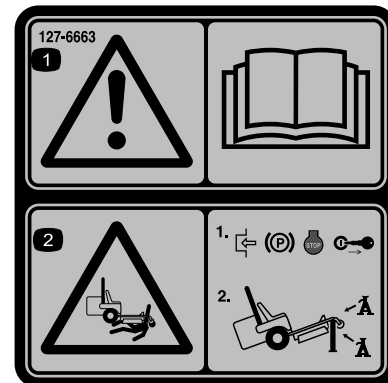
Remove the key from the ignition switch and engage parking brake before you do any maintenance.

Note: Determine the left and right sides of the machine from the normal operating position.

Note: Park the machine on a level surface. Make sure all moving parts have stopped, parking brake is engaged, and the key has been removed. Allow the machine to cool before starting these instructions.

Safety and Instructional Decals

- Keep all safety signs legible. Remove all grease, dirt and debris from safety signs and instructional labels.
- Replace all worn, damaged, or missing safety signs.
- When replacement components are installed, be sure that current safety signs are affixed to the replaced components.
- If an attachment or accessory has been installed, make sure current safety signs are visible.
- New safety signs may be obtained from your authorized equipment dealer or distributor.
- Safety signs may be affixed by peeling off the backing to expose the adhesive surface. Apply only to a clean, dry surface. Smooth to remove any air bubbles.
- Familiarize yourself with the following safety signs and instruction labels. They are critical to the safe operation of your commercial mower.



127-6663

1. Warning—read the Operator's manual.
2. Crushing hazard—
 - 1) Engage the parking brake, stop the engine, and remove the key from the ignition.
 - 2) Jack the machine using a manufacturer-approved jack, and always use jack stands.

Installation Instructions

1. Stop the engine, wait for all moving parts to stop, and remove key. Engage parking brake.
2. Align the holes in the jack mount with the holes in the front of the frame as shown in [Figure 1](#) or [Figure 2](#).
3. Secure the jack mount to the front and underside of the frame with two carriage bolts and nuts.

Using the Jack Kit

The jack kit raises the front end of the mower to allow you to clean under the mower deck and change the blades.

⚠ WARNING

The mower could fall onto someone and cause serious injury or death.

- Read and understand the operator's manual before performing maintenance.
- Always turn the engine off, set the parking brake and remove the key before performing any maintenance to the mower.
- Do Not keep the mower raised on the jack for extended periods of time.
- Always use a jack on a level surface.
- Ensure the jack is secured properly to the jack mount using a jack pin.
- This jack is intended for use with the mower as described in this instruction sheet. Other uses may cause unseen damage or failure of the jack.
- Do Not rely solely on the jack for support. Use adequate jack stands or equivalent support.
- Do Not mount or dismount the mower while the jack is raised.
- Before each use, ensure that the jack and jack mount work properly and that there are no signs of damage.

Note: Only use an approved jack(s) rated at 2,000 lb (907.2 kg) or higher lift capacity with the jack mount.

1. Disengage the blade control switch (PTO), move the motion control levers to the neutral locked position, and set the parking brake.
2. Stop the engine, remove the key, and wait for all moving parts to stop before leaving the operating position.

3. Raise the mower deck to the transport position.
4. Insert the jack tube onto the jack mount, align the mounting holes, and secure the jack with the jack pin ([Figure 4](#)).
5. Rotate the handle on the jack to raise the mower until the jack is at the desired height. Do not over extend the jack.

⚠ WARNING

Raising the machine could cause a fuel leak.

- Check for any fuel leaks before performing maintenance.
- If you see a fuel leak, immediately lower the machine and drain the fuel to eliminate the hazard.

6. Lower the mower onto jack stands or an equivalent support.
7. Perform the maintenance.
8. When the maintenance is completed, remove the jack stands or equivalent support.
9. Rotate the handle on the jack to lower the mower.
10. Remove and store the jack.

Important: The mower is not designed to store the jack when it is not being used. Do not drive the mower with the jack installed.

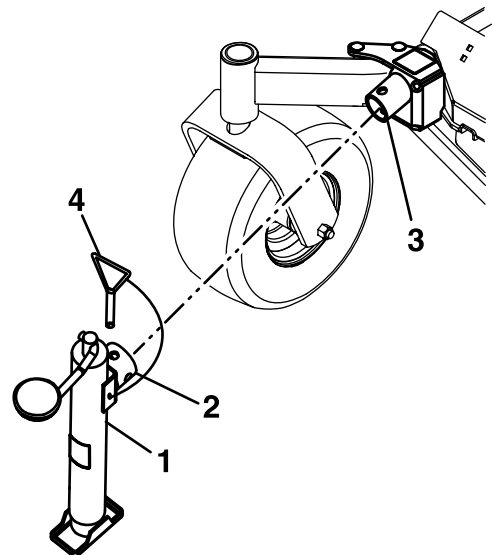


Figure 4

- | | |
|--------------------|--------------|
| 1. Jack pin | 3. Jack tube |
| 2. Jack-mount tube | 4. Jack |

g396724