



## Topdresser 2500

Model No. 44507 - 240000001 and up.

### Parts Catalog

---

#### **Ordering Replacement Parts**

To order replacement parts, please supply the part number, the quantity, and the description of each part desired.

#### **Understanding Reference Numbers**

Each Identified part in an illustration has a reference number. The reference number for a part also appears in the parts list, along with other information about the part.

This catalog uses two special reference number formats, one to indicate parts in a service assembly and another to indicate the quantity of a given part in an illustration.

#### **Service Assembly Reference Numbers**

Parts in service assemblies have reference numbers in the form a:b. The a represents the reference number of the entire service assembly and the b represents a sequential number unique to each part within the service assembly.

For example, a wheel assembly might be identified by reference number 6, the tire by 6:1, the valve by 6:2, and the wheel by 6:3. When you order the assembly identified by reference number 6, you receive all parts identified by reference numbers 6:1, 6:2, and 6:3. However, you may also order any part individually. Reference numbers of this type appear in illustrations and in part lists.

#### **Reference Numbers Indicating Quantity**

In an illustration, if a reference number indicates more than one part, the reference number has the form nX y. The n represents the quantity of the part, the X is the multiplication symbol, and the y represents the reference number.

For example, in an illustration, the reference number 2X 37 means that two of the parts identified by reference number 37 are indicated.

# Part Description Abbreviations

Part descriptions in this catalog may include the following abbreviations.

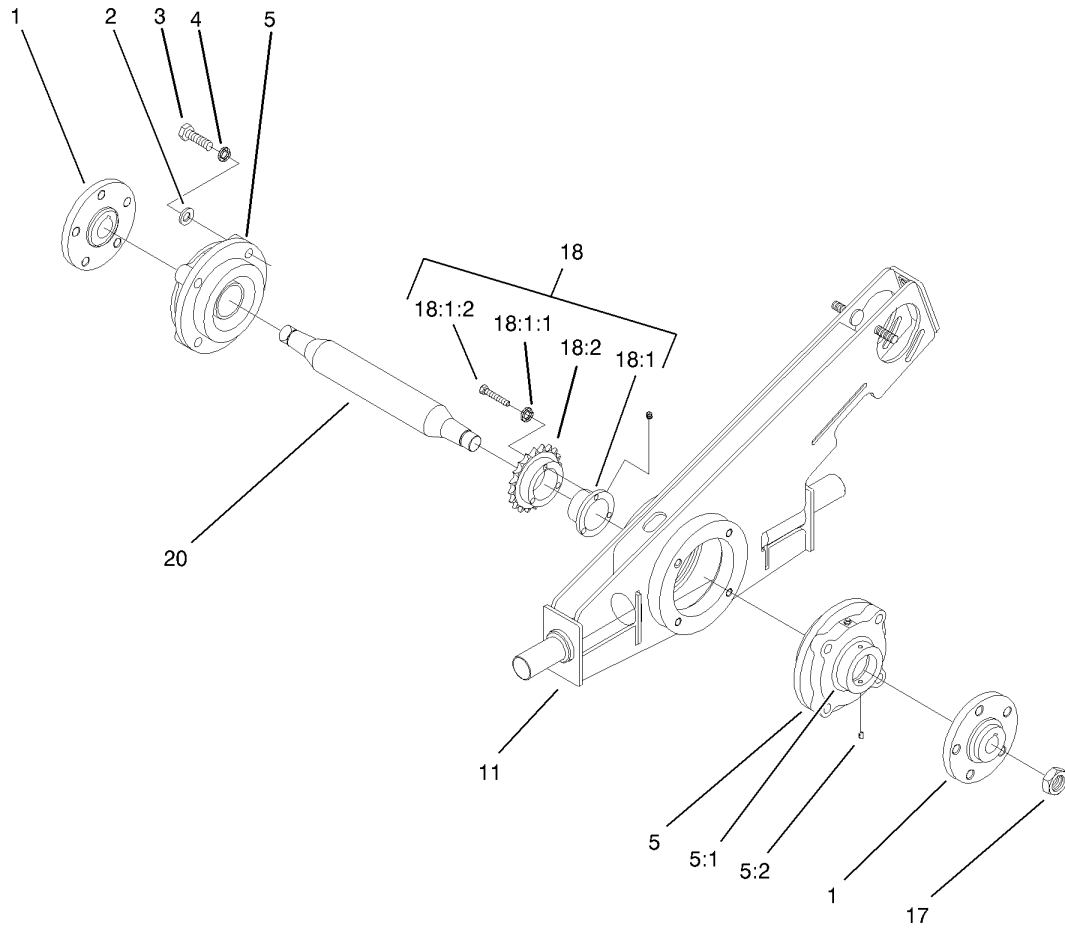
AR. ....	as required	HYD. ....	hydraulic
ASM. ....	assembly	INC. ....	incorporated
CARR. ....	carriage	LH. ....	left hand
DEG. ....	degrees	NI. ....	nylon insert
FH. ....	flat head	PPH. ....	phillips pan head
GA. ....	gauge	PTH. ....	phillips truss head
HF. ....	hex flange	PTO. ....	power take off
HH. ....	hex head	RH. ....	right hand
HHF. ....	hex head flange	SFH. ....	slotted fillister head
HHFTF. ....	hex head flange thread forming	SHH. ....	slotted hex head
HJ. ....	hex jam	SHWH. ....	slotted hex washer head
HLH. ....	hex lag head	SPH. ....	slotted pan head
HOC. ....	height-of-cut	SQH. ....	square head
HS. ....	hex	SRH. ....	slotted round head
HSBH. ....	hex socket button head	STD. ....	standard
HSFH. ....	hex socket flat head	TAP. ....	self tapping
HS. ....	hex socket head	TTH. ....	torx truss head
HWH. ....	hex washer head	WH. ....	wing head
HWHTF. ....	hex washer head thread forming		

## Footnotes

- ❶ Not illustrated

## Contents

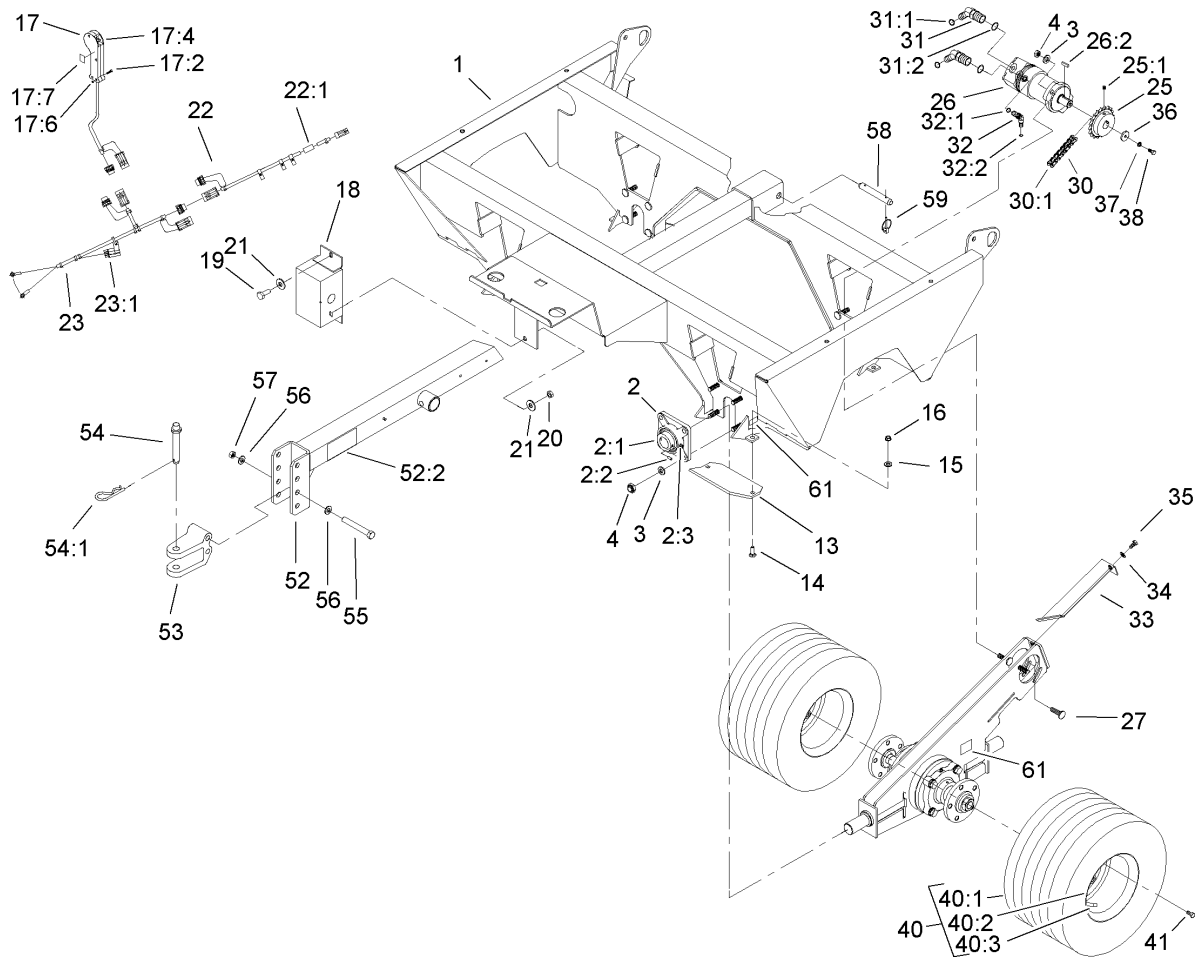
Description	Page	Description	Page
Cradle Assembly	..... 3	Gate Slide and Brush Guard Assembly	..... 12
Cradle and Trailer Assembly	..... 4	Chain, Sprocket and Guard Assembly	..... 13
Hydraulic Manifold Assembly	..... 6		
Hydraulic Installation Assembly	..... 7		
Slider Bed and Roller Assembly	..... 8		
Gate Assembly	..... 9		
Brush and Motor Assembly	..... 10		
Hopper Assembly	..... 11		



### Cradle Assembly

Ref	Part No.	Qty.	Description
1	100-1418-03	4	Hub
2	3256-26	16	Washer-Flat
3	325-7	16	Screw-HH
4	3253-7	16	Washer-Lock
5	100-1455	4	Bearing
5:1	99-0194	1	Collar-Locking
5:2	99-0195	1	Screw-Set, HS
11	100-1488-03	2	Cradle ASM
17	26-3790	4	Nut-Lock
18	100-7690	2	Sprocket And Hub ASM
18:1	100-7730	1	Bushing
18:1:1	3253-18	3	Washer-Lock/sp
18:1:2	32104-96	3	Screw-HH
18:2	100-7731	1	Sprocket-Driven, 20 Tooth
20	100-1490	2	Axle-Cradle

--	--	--	--

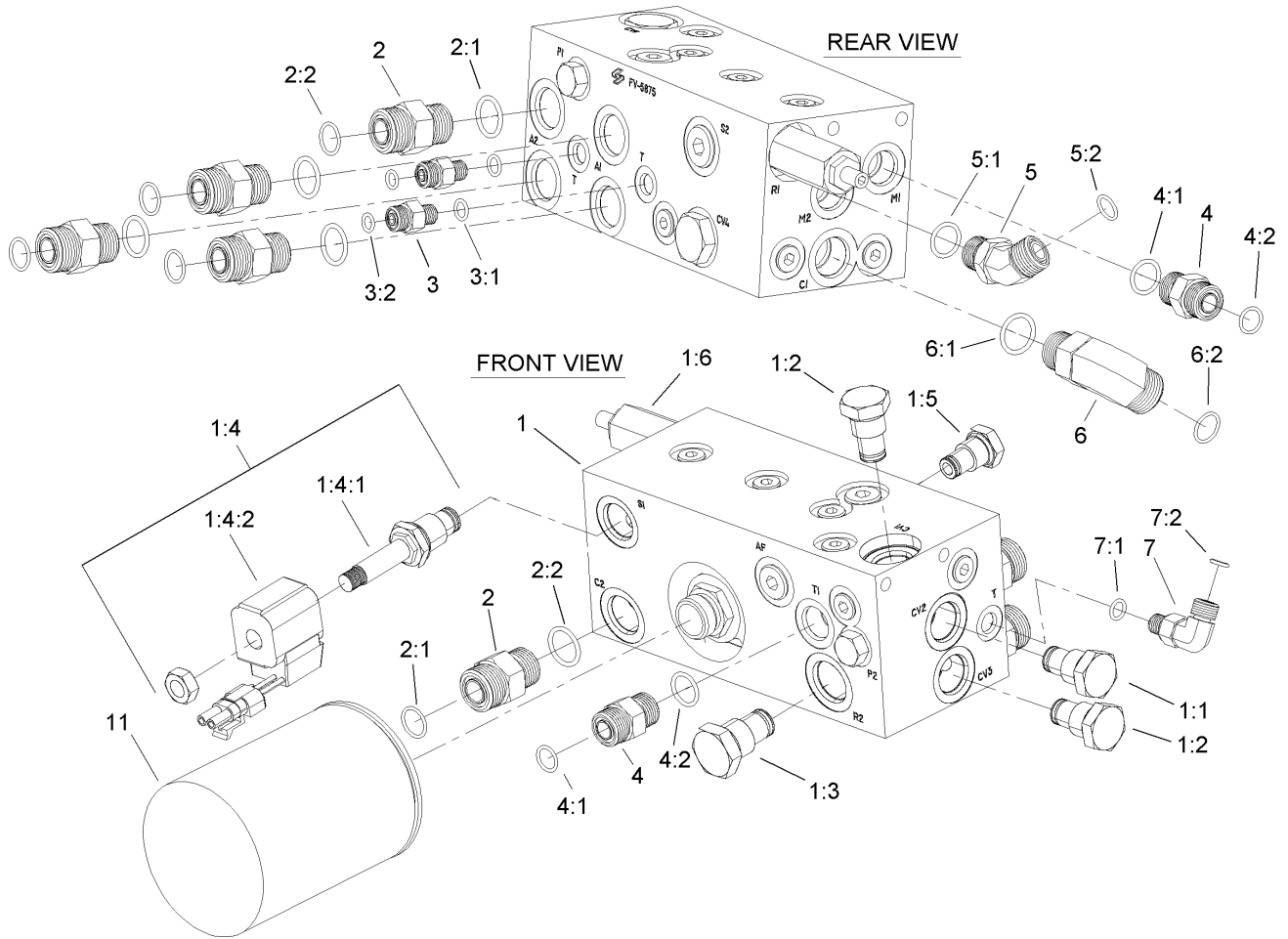


## Cradle and Trailer Assembly

Ref	Part No.	Qty.	Description
1	106-9671-01	1	Frame-Trailer
2	100-1456	4	Bearing
2:1	01-172-0090	1	Collar-Lock
2:2	3246-16	1	Screw-Set
2:3	302-2	1	Fitting-Grease
3	3256-26	20	Washer-Flat
4	3296-23	20	Nut-Lock, NI
13	100-7678-01	4	Plate-Skid
14	3231-25	8	Screw-CARR
15	3256-25	8	Washer-Flat
16	3296-39	8	Nut-Lock, NI
17	100-7680	1	Control Handle ASM
17:2	100-7681	4	Screw-SRH
17:4	01-603-0760	1	Boot-Rubber
17:5	01-603-0750	1	Switch-Pole, Single
17:6	3217-32	4	Nut-Hex
17:7	100-7682	2	Decal-On/off
18	100-1410-03	1	Pump-Charge
19	325-5	2	Screw-HH
20	3296-45	2	Nut-Lock, NI
21	3256-6	4	Washer-Flat
22	99-0008	1	Harness-Wire, Trailer
22:1	100-4918	1	Diode
23	99-0198	1	Harness-Wire, Battery

Ref	Part No.	Qty.	Description
23:1	110928	1	Fuse-5 Amp
25	100-7691	2	Sprocket-Chain, Roller
25:1	3246-3	2	Screw-HS
26	100-1459	2	Motor-HYD
26:1	100-1466	1	Seal Kit
26:2	5-7280	1	Key
27	100-7698	2	Bolt-Carriage
30	100-1472	2	Chain-Cradle, Roller
30:1	2710-16	1	Link-Chain
31	340-14	4	Fitting-Hyd, 45 DEG
31:1	237-65	1	O-Ring
31:2	237-80	1	O-Ring
32	340-103	2	Fitting-Hyd, 45 DEG
32:1	237-78	1	O-Ring
32:2	237-21	1	O-Ring
33	100-1452-03	2	Cover-Cradle, Top
34	3256-24	2	Washer-Flat
35	323-4	2	Screw-HH
36	71-5320	2	Washer-Support, Engine
37	3253-4	2	Washer-Lock
38	322-3	2	Screw-HH
40	99-0169	4	Wheel And Tire ASM
40:1	99-0173	1	Tire
40:2	99-0174	1	Rim

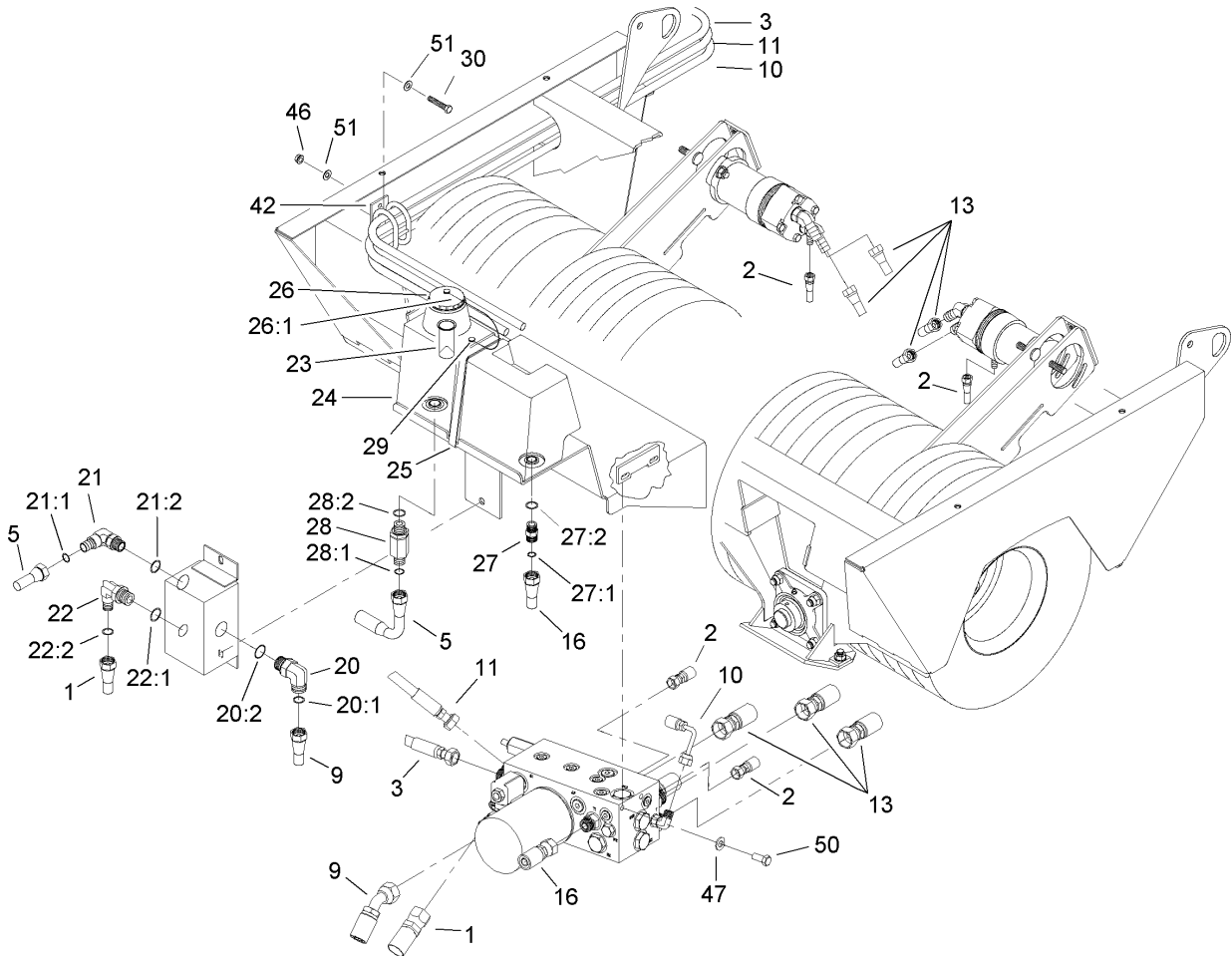




## Hydraulic Manifold Assembly

Ref	Part No.	Qty.	Description
1	106-9667	1	HYD Manifold ASM
1:1	100-7723	1	Valve-Check
1:2	106-9669	2	Valve-Check
1:3	106-9670	1	Valve-Check
1:4	100-7699	1	Solenoid Valve ASM
1:4:1	100-7718	1	Valve-Solenoid
1:4:2	100-7720	1	Coil-Solenoid
1:5	106-9668	1	Valve-Check
1:6	100-7740	1	Valve-Relief
2	340-7	5	Adapter
2:1	237-65	1	O-Ring
2:2	237-80	1	O-Ring
3	340-92	2	Fitting-Hyd, Straight
3:1	237-78	1	O-Ring
3:2	237-21	1	O-Ring
4	340-4	2	Fitting-Hyd, Sraight
4:1	237-30	1	O-Ring
4:2	237-79	1	O-Ring
5	340-101	1	Fitting-Hyd, 45 DEG
5:1	237-30	1	O-Ring
5:2	237-79	1	O-Ring
6	340-17	1	Fitting-Hyd, 90 DEG
6:1	237-65	1	O-Ring
6:2	237-80	1	O-Ring

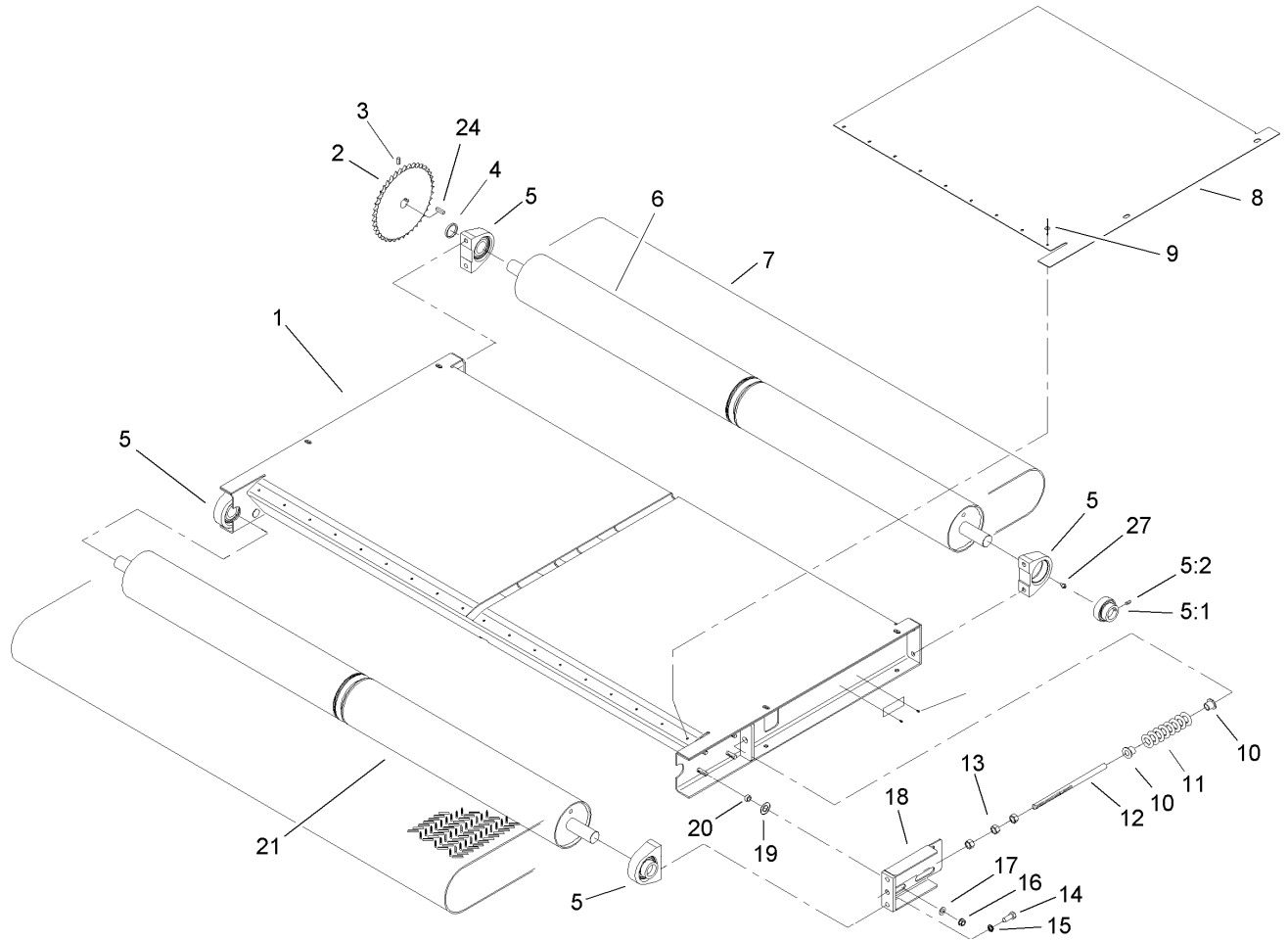
Ref	Part No.	Qty.	Description
7	340-132	1	Fitting-Hyd, 90 DEG
7:1	237-78	1	O-Ring
7:2	237-21	1	O-Ring
11	86-3010	1	Filter-Oil



## Hydraulic Installation Assembly

Ref	Part No.	Qty.	Description
1	105-0639	1	HYD Hose ASM
2	106-9674	2	HYD Hose ASM
3	104-0304	1	HYD Hose ASM
5	100-7657	1	HYD Hose ASM
9	106-9675	1	HYD Hose ASM
10	106-9677	1	HYD Hose ASM
11	104-0303	1	HYD Hose ASM
13	106-9678	4	HYD Hose ASM
16	106-9676	1	HYD Hose ASM
20	340-142	1	Fitting-Hyd, 90 DEG
20:1	237-58	1	O-Ring
20:2	237-81	1	O-Ring
21	340-17	1	Fitting-Hyd, 90 DEG
21:1	237-65	1	O-Ring
21:2	237-80	1	O-Ring
22	340-139	1	Fitting-Hyd, 90 DEG
22:1	237-81	1	O-Ring
22:2	237-65	1	O-Ring
23	92-1705	1	Filter-Screen
24	94-4700	1	Tank-HYD
25	100-7693	1	Clamp-Tank
26	93-4365	1	Cap-Oil
26:1	75-0540	1	Tether And Button Kit
27	340-4	1	Fitting-Hyd, Sraight

Ref	Part No.	Qty.	Description
27:1	237-30	1	O-Ring
27:2	237-79	1	O-Ring
28	340-7	1	Adapter
28:1	237-65	1	O-Ring
28:2	237-80	1	O-Ring
29	3290-126	1	Screw
30	322-5	2	Screw-HH
42	99-5621	1	Guide-Hose
46	3296-29	2	Nut-Lock, NI
47	3256-24	4	Washer-Flat
50	323-5	4	Screw-HH
51	3256-23	4	Washer-Flat
●99	100-7674	1	Oil-Hyd, 5 Gallon
●99:1	99-0010	1	Decal-Fluid, HYD

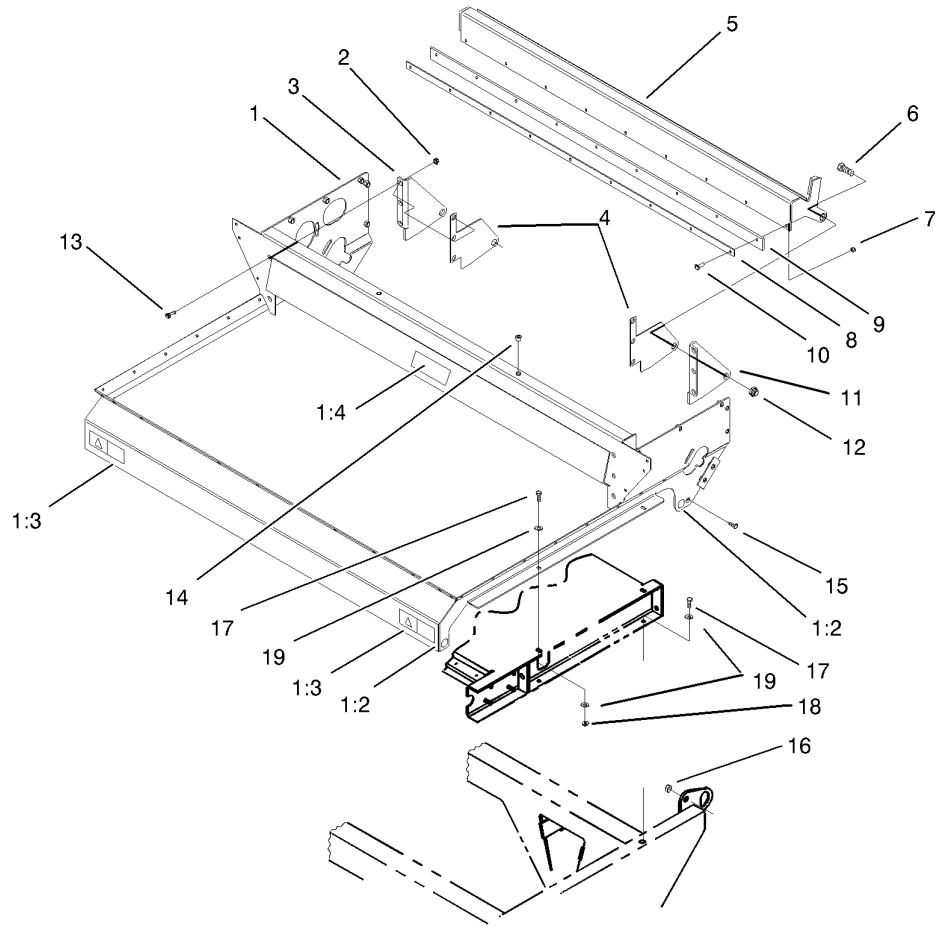


## Slider Bed and Roller Assembly

Ref	Part No.	Qty.	Description
1	99-0038-01	1	Frame-Bed, Slider
2	99-0166-03	1	Sprocket-Driven
3	3246-3	2	Screw-HS
4	99-0017-01	1	Spacer-Sprocket
5	99-0158	4	Bearing-Base, Tapped
5:1	251-246	1	Collar W/set Screws
5:2	106-9662	1	Screw-Set, HS
6	99-0046	1	Roller-Rear
7	100-1425	1	Belt Kit
7:2	100-1426	2	Tool-Install, Belt
8	99-0047	2	Plate-Wear
9	3269-28	18	Rivet-Pop
10	100-1414	4	Holder-Spring
11	99-0163	2	Spring-Compression
12	99-0118	2	Pin-Spring
13	3217-9	6	Nut-Hex
14	100-1438	8	Screw-Socket Head, Torx
15	3253-6	8	Washer-Lock
16	3296-39	8	Nut-Lock, NI
17	3256-4	8	Washer-Flat
18	99-0050-01	2	Spring Plate ASM
19	99-0052	8	Washer-Slide
20	100-1401	8	Spacer-Slide, Spring
21	99-0044	1	Roller-Front

Ref	Part No.	Qty.	Description
24	10-7070	1	Key-Square
27	302-60	4	Fitting-Grease

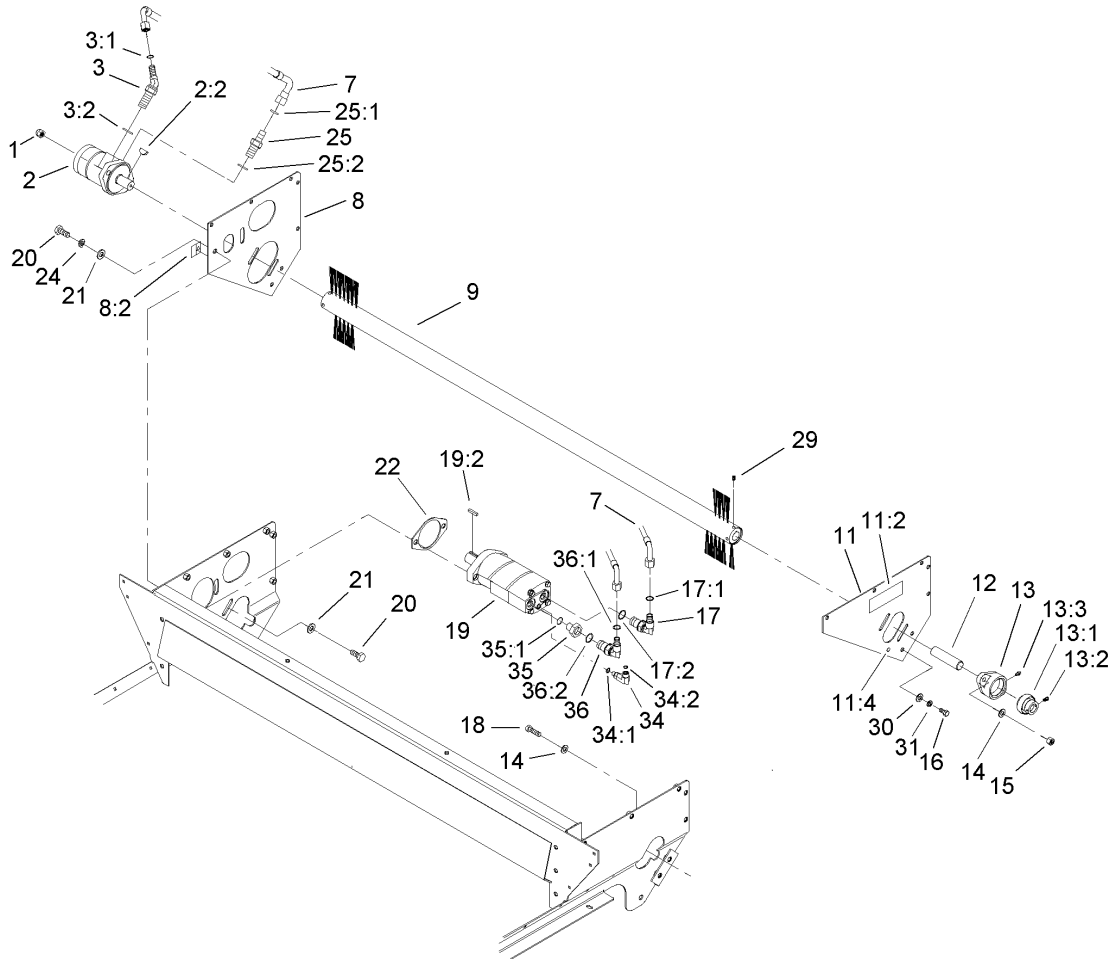




## Gate Assembly

Ref	Part No.	Qty.	Description
1	100-1435	1	Hopper Frame ASM
1:2	58-6520	4	Decal-Grease
1:3	93-9092	2	Decal-Warning
1:4	105-4586	1	Decal-Shield
2	32128-37	6	Nut-HF
3	99-0079-01	1	Bracket-Gate Pivot, RH
4	99-0117	2	Wareplate-Gate
5	99-0068-01	1	Gate ASM
6	328-24	2	Screw-HH
7	3296-29	9	Nut-Lock, NI
8	99-0089-01	1	Plate-Backing
9	99-0074	1	Seal-Gate
10	322-6	9	Screw-HH
11	99-0078-01	1	Bracket-Gate Pivot, LH
12	3296-51	2	Nut-Lock, NI
13	324-4	6	Screw-HH
14	32148-9	2	Insert-Nut
15	325-5	2	Screw-HH
16	3296-23	2	Nut-Lock, NI
17	323-7	8	Screw-HH
18	3296-39	4	Nut-Lock, NI
19	3256-24	12	Washer-Flat

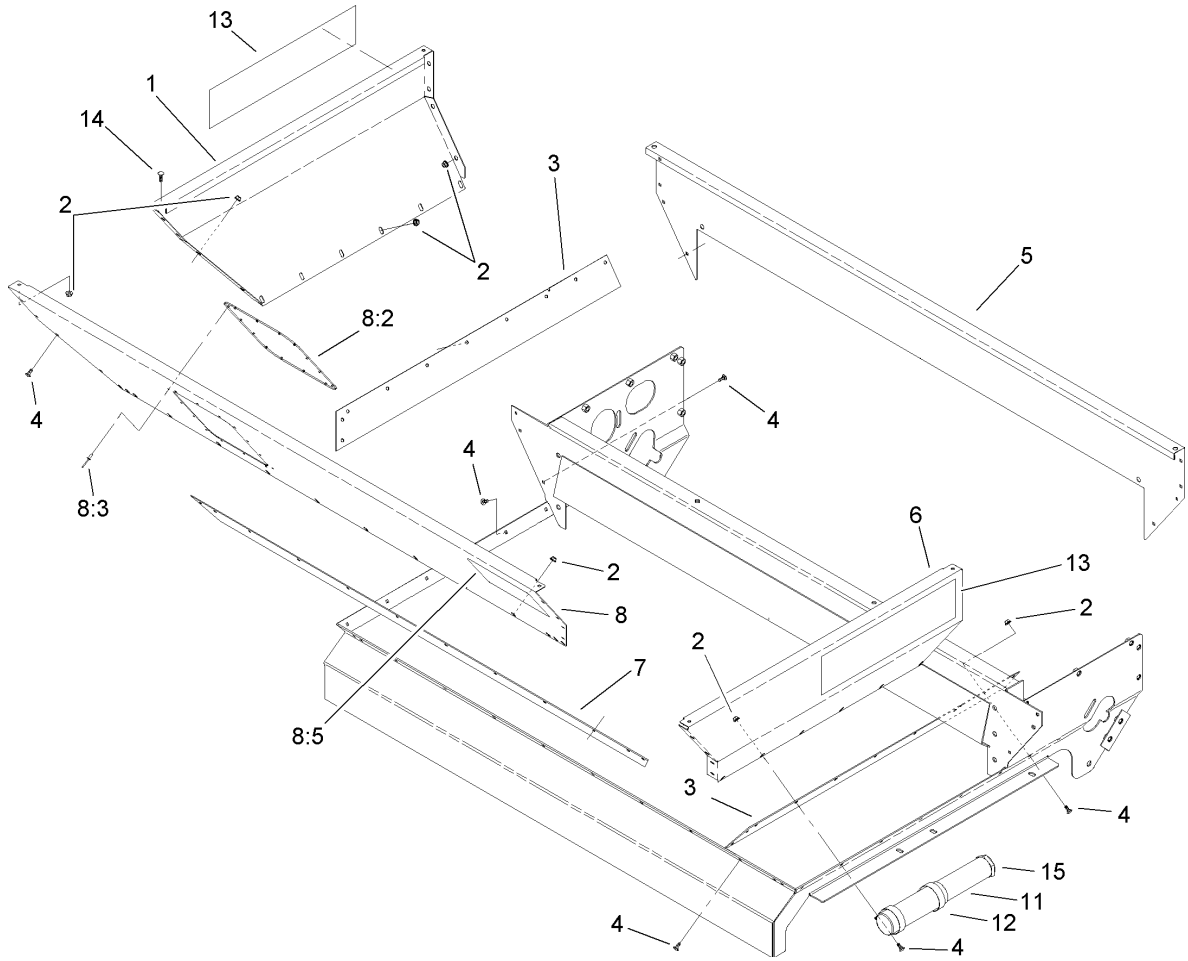
--	--	--	--



## Brush and Motor Assembly

Ref	Part No.	Qty.	Description
1	3296-45	2	Nut-Lock, NI
2	99-0156	1	HYD Motor ASM
2:1	100-1446	1	Seal Kit
2:2	3257-8	1	Key-Woodruff
3	340-89	1	Fitting-Hyd, 45 DEG
3:1	237-30	1	O-Ring
3:2	237-80	1	O-Ring
7	99-0177	1	Hose-HYD
8	100-1431	1	RH Motor Brace ASM
8:2	105-4586	1	Decal-Shield
9	99-0162	1	Brush
11	100-1430	1	LH Motor Brace ASM
11:2	106-7750	1	Decal-Danger
11:4	58-6520	1	Decal-Grease
12	99-0041	1	Shaft-Brush
13	99-0160	1	Bearing
13:1	251-249	1	Collar W/set Screws
13:2	3245-35	1	Screw-HS
13:3	302-2	1	Fitting-Grease
14	3256-25	4	Washer-Flat
15	3296-48	2	Nut-Lock, NI
16	323-4	4	Screw-HH
17	340-105	1	Fitting-Hyd, 90 DEG
17:1	237-80	1	O-Ring

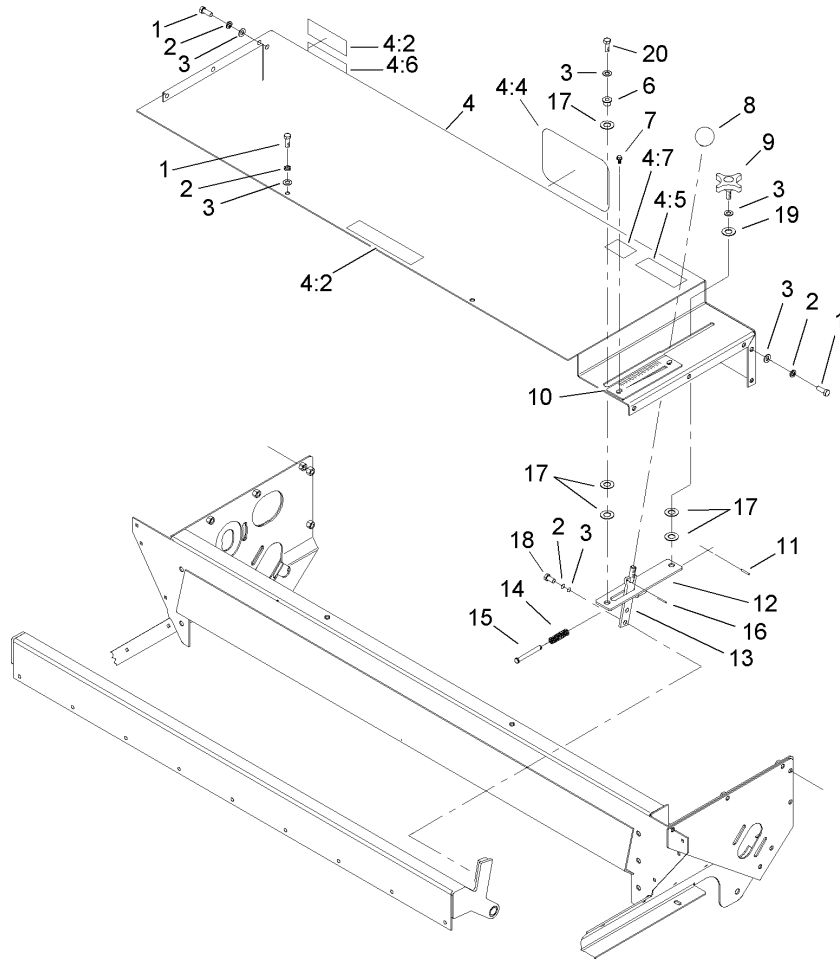
Ref	Part No.	Qty.	Description
17:2	237-30	1	O-Ring
18	324-6	2	Screw-HH
19	99-0155	1	HYD Motor Conveyor ASM
19:1	100-1447	1	Seal Kit
19:2	10-7070	1	Key-Square
20	325-6	4	Screw-HH
21	3256-26	4	Washer-Flat
22	99-0116	1	Plate-Spacer
24	3253-7	2	Washer-Lock
25	340-6	1	Fitting-Hyd, Straight
25:1	237-30	1	O-Ring
25:2	237-80	1	O-Ring
29	3246-3	4	Screw-HS
30	3256-24	4	Washer-Flat
31	3253-21	4	Washer-Lock
34	100-7695	1	Adapter-HYD
34:1	237-78	1	O-Ring
34:2	237-21	1	O-Ring
35	100-4617	1	Adapter-HYD
35:1	237-80	1	O-Ring
36	99-6160	1	Fitting-Elbow, 90 DEG
36:1	237-30	1	O-Ring
36:2	237-79	1	O-Ring
99	3290-379	6	Tie-Cable



## Hopper Assembly

Ref	Part No.	Qty.	Description
1	99-0123	1	Panel-Hopper, RH
2	32128-33	48	Nut-HF
3	99-0142	2	Seal-Sand, Side
4	3229-25	44	Screw-CARR
5	99-0121	1	Panel-Hopper, Back
6	99-0124	1	Panel-Hopper, LH
7	99-0143	1	Seal-Sand, Front
8	100-1465	1	Front Hopper Panel ASM
8:2	99-0120	1	Hopper-Window
8:3	3269-28	14	Rivet-Pop
8:5	99-0016	1	Decal-Danger
11	104-7050	1	Housing-Manual
12	2412-133	2	R-Clamp
13	99-0012	2	Decal
14	321-4	4	Screw-HH
15	104-7048	1	Cap-Housing

--	--	--	--



## Gate Slide and Brush Guard Assembly

Ref	Part No.	Qty.	Description
1	323-7	12	Screw-HH
2	3253-21	14	Washer-Lock
3	3256-24	16	Washer-Flat
4	100-1432	1	Brush Guard ASM
4:2	106-7750	2	Decal-Danger
4:4	92-1242	1	Decal
4:5	105-0707	1	Decal-Ansi
4:6	105-0708	1	Decal-Danger
4:7	98-3114	1	Decal-Warning
6	256-259	1	Bushing-Flange
7	93-6083	2	Screw-HWH
8	233-48	1	Knob
9	100-1449	1	Knob
10	100-1416	1	Plate-Gate
11	32121-45	1	Pin-Spring
12	99-0073-03	1	Slide Block Plate ASM
13	100-1406-03	1	Gate Handle ASM
14	100-1448	1	Spring-Gate
15	100-1413	1	Pin-Clevis
16	32121-40	1	Pin-Spring
17	99-0052	5	Washer-Slide
18	323-4	2	Screw-HH
19	95-4896	1	Washer-Nylon
20	3274-63	1	Screw-HSBH

--	--	--	--



## NOTES

## NOTES

