



**Count on it.**

**Parts Catalog**

**Powered Twin Bagger  
TITAN® Zero-Turn-Radius Riding Mower**

Model No. 79348—Serial No. 40000000 and Up



# Ordering Replacement Parts

To order replacement parts, please supply the part number, the quantity, and the description of each part desired.

## Understanding Reference Numbers

Each identified part in an illustration has a reference number. The reference number for a part also appears in the parts list, along with other information about the part.

This catalog uses two special reference number formats, one to indicate parts in a service assembly and another to indicate the quantity of a given part in an illustration.

## Service Assembly Reference Numbers

Parts in service assemblies have reference numbers in the form a:b. The a represents the reference number of the entire service assembly and the b represents a sequential number unique to each part within the service assembly.

For example, a wheel assembly might be identified by reference number 6, the tire by 6:1, the valve by 6:2, and the wheel by 6:3. When you order the assembly identified by reference number 6, you receive all parts identified by reference numbers 6:1, 6:2, and 6:3. However, you may also order any part individually. Reference numbers of this type appear in illustration and in parts lists.

## Reference Numbers Indicating Quantity

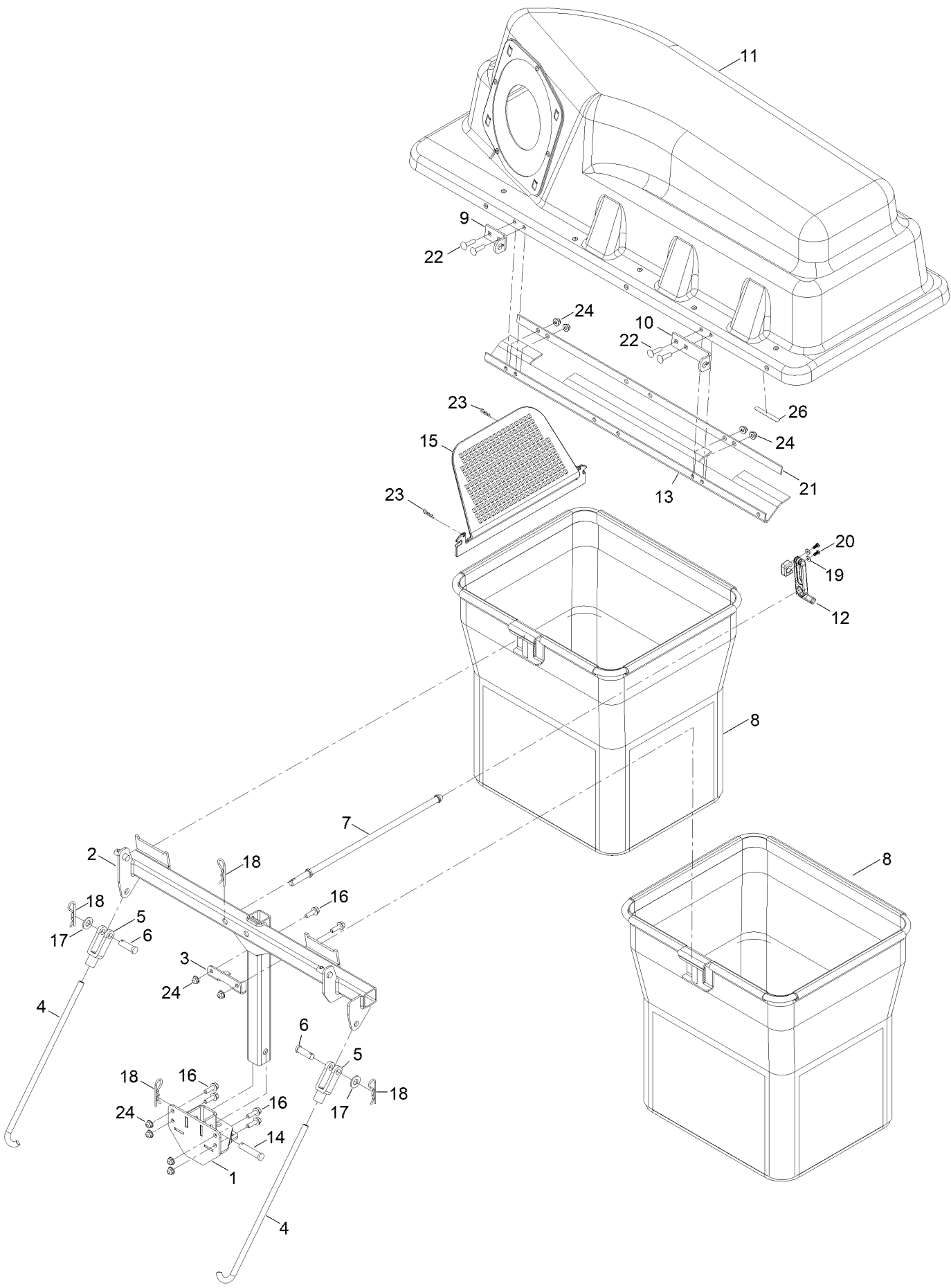
In an illustration, if a reference number indicates more than one part, the reference number has the form nX y. The n represents the quantity of the part, the X is the multiplication symbol, and the y represents the reference number.

For example, in an illustration, the reference number 2X 37 means that two of the parts identified by reference number 37 are indicated.

# Contents

Bagger Assembly .....	4
Bag and Frame Assembly No. 161-6239 .....	6
Bagger Hood Assembly No. 140-5031 .....	8
Blower and Tube Assembly .....	10
Blower Assembly No. 140-5032 .....	12
Weight Assembly .....	14

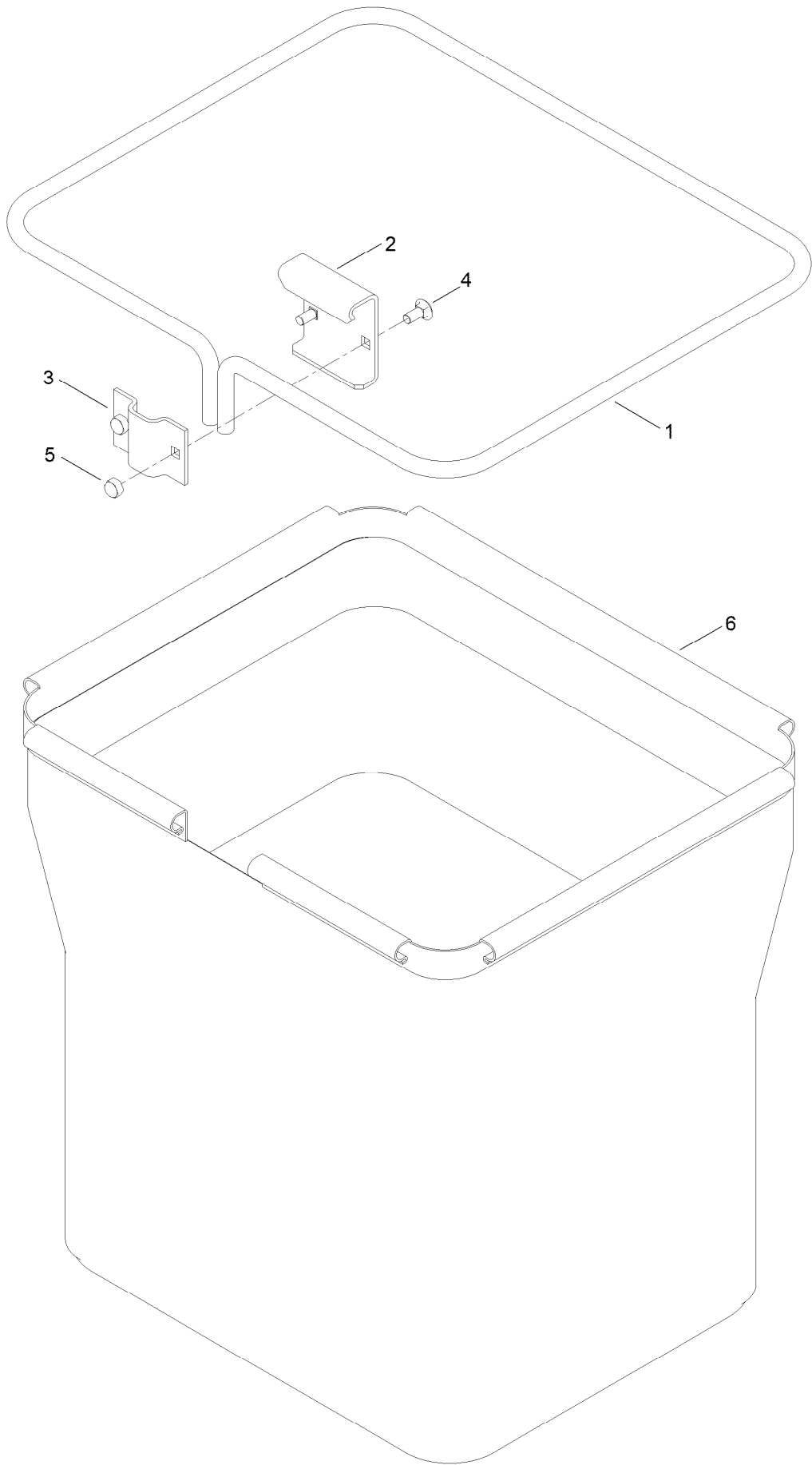
# Bagger Assembly



## Bagger Assembly (continued)

<i>Ref.</i>	<i>Part Number</i>	<i>Qty.</i>	<i>Description</i>	<i>Ref.</i>	<i>Part Number</i>	<i>Qty.</i>	<i>Description</i>
1	147-8803-03	1	Mount-Bagger	14	92-2739	1	Pin-Clevis
2	161-4501-03	1	Frame-Bagger [black]	15	112-3993	1	Screen-Bagger
3	147-8831-03	1	Plate-Bagger Stabilizer	16	139-2596	6	Screw-HHF
4	161-4480	2	Rod-Bagger Support	17	139-2611	2	Washer-Flat
5	100-7338	2	Clevis	18	139-2562	4	Pin-Hair
6	283-68	2	Pin-Clevis	19	137-3073	2	Washer-Plain
7	131-4189	1	Rod-Hood, Down	20	137-9137	2	Screw-PPH
8	161-6239	2	Bag ASM	21	116-4127-03	1	Plate-Backing
9	140-5016	1	Bracket-Hopper Pivot	22	139-1702	4	Bolt-Carriage
10	147-5327	1	Bracket-Hopper Pivot	23	137-3083	2	Pin-Hair
11	140-5031	1	Bagger Hood ASM	24	119-4041	10	Nut-HF
12	116-4992	1	Latch-Rubber	26	133-8061	1	Decal-Warning
13	116-4126	1	Seal				

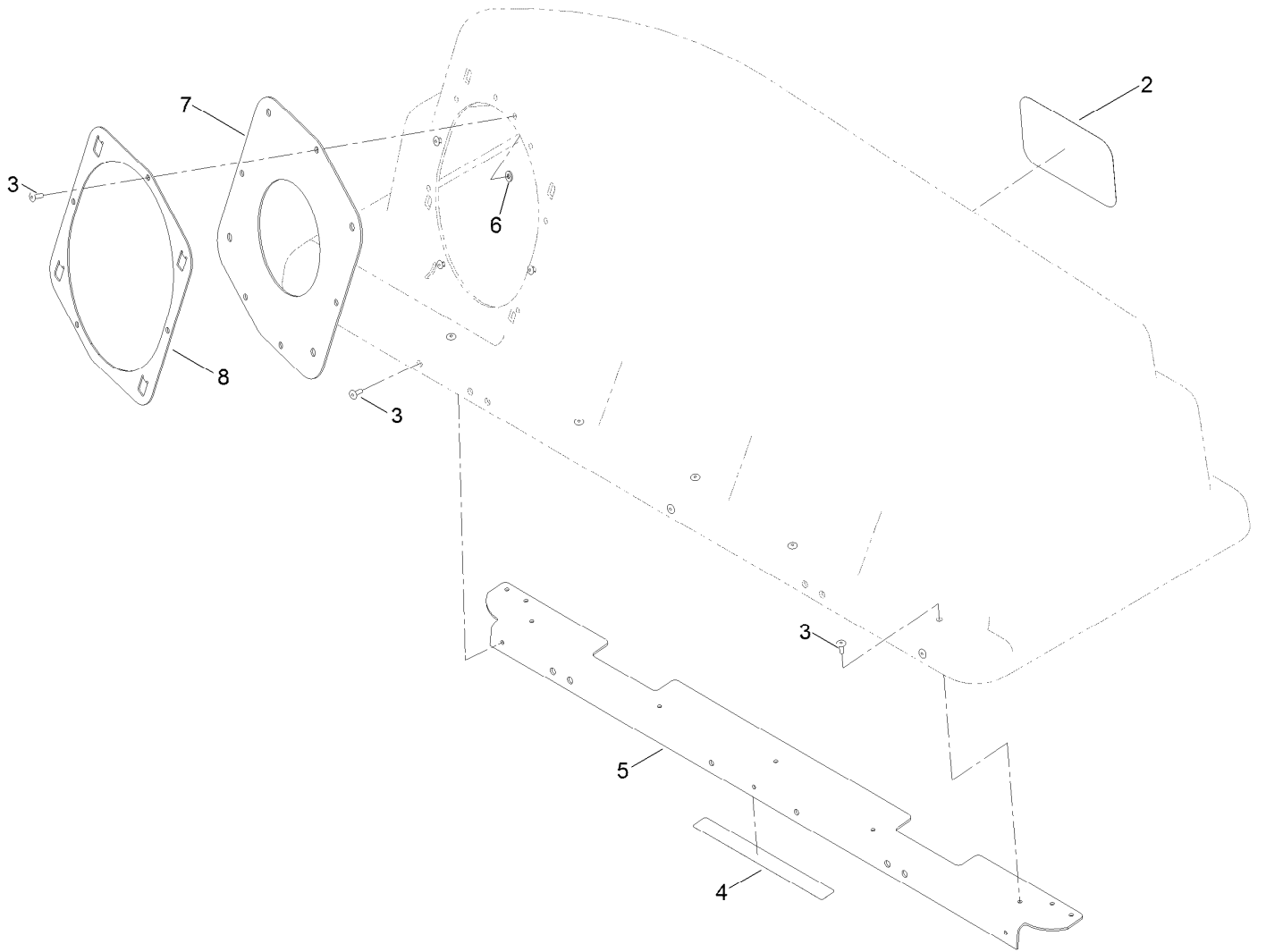
# Bag and Frame Assembly No. 161-6239



## Bag and Frame Assembly No. 161-6239 (continued)

<i>Ref.</i>	<i>Part Number</i>	<i>Qty.</i>	<i>Description</i>	<i>Ref.</i>	<i>Part Number</i>	<i>Qty.</i>	<i>Description</i>
1	114972-03	1	Frame-Bag	4	139-2630	2	Bolt-CARR
2	114973-03	1	Hanger-Bag	5	119-4038	2	Nut-Hex
3	114974-03	1	Clamp	6	140-5192	1	Bag ASM 20In Depth

# Bagger Hood Assembly No. 140-5031

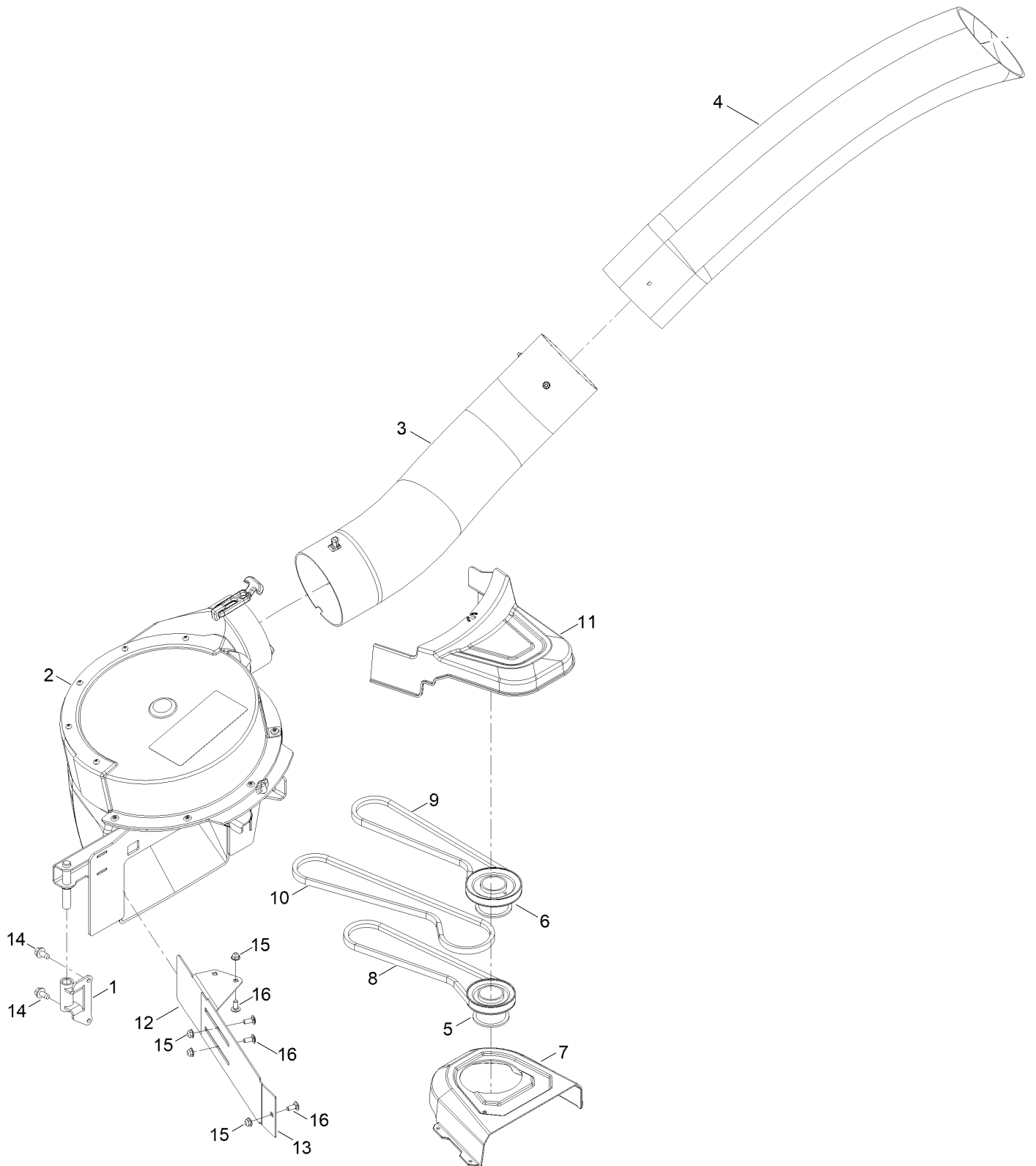




## Bagger Hood Assembly No. 140-5031 (continued)

<i>Ref.</i>	<i>Part Number</i>	<i>Qty.</i>	<i>Description</i>	<i>Ref.</i>	<i>Part Number</i>	<i>Qty.</i>	<i>Description</i>
2	99-4693	1	Decal	6	137-3073	4	Washer-Plain
3	114439	12	Rivet-Blind	7	116-4478	1	Gasket
4	109-6809	1	Decal-Caution, Bagger	8	112-4000-03	1	Ring-Retainer
5	116-5071-03	1	Stiffener-Bagger, Top				

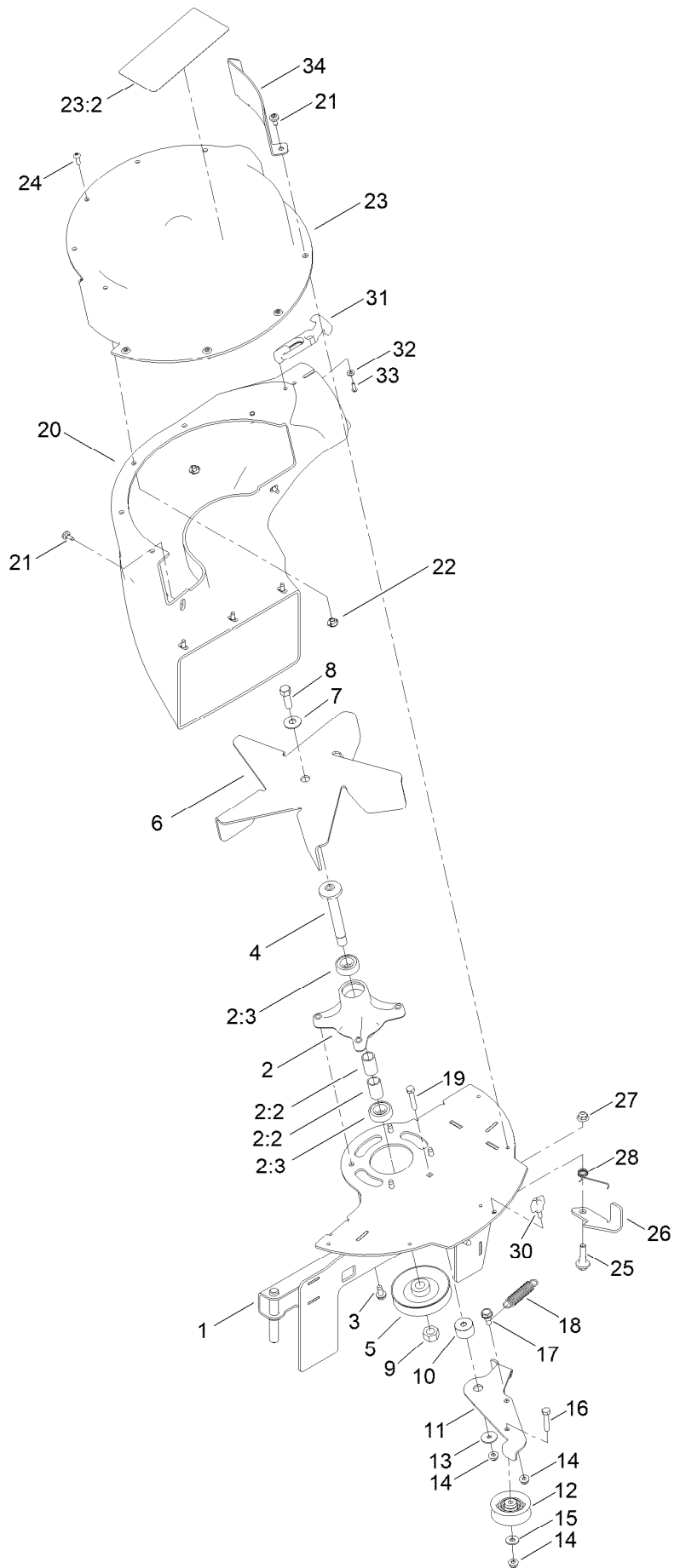
# Blower and Tube Assembly



## Blower and Tube Assembly (continued)

<i>Ref.</i>	<i>Part Number</i>	<i>Qty.</i>	<i>Description</i>	<i>Ref.</i>	<i>Part Number</i>	<i>Qty.</i>	<i>Description</i>
1	136-4152	1	Pivot-Blower	9	127-0075	1	Belt-V
2	140-5032	1	Blower ASM - Powered Bagger	10	127-0076	1	Belt-V
3	140-5030	1	Tube ASM-Lower	11	136-4172	1	Cover-Bagger, Powered
4	161-6302	1	Tube ASM-Upper	12	133-7022-03	1	Baffle-Outer
5	125-0085	1	Pulley-Bagger	13	133-7021-03	1	Baffle-Inner
6	125-0086	1	Pulley-Bagger	14	110-9380	2	Screw-HWH
7	136-4151	1	Cover-Belt, RH	15	119-4041	4	Nut-HF
8	127-0074	1	Belt-V	16	137-3061	4	Bolt-CARR

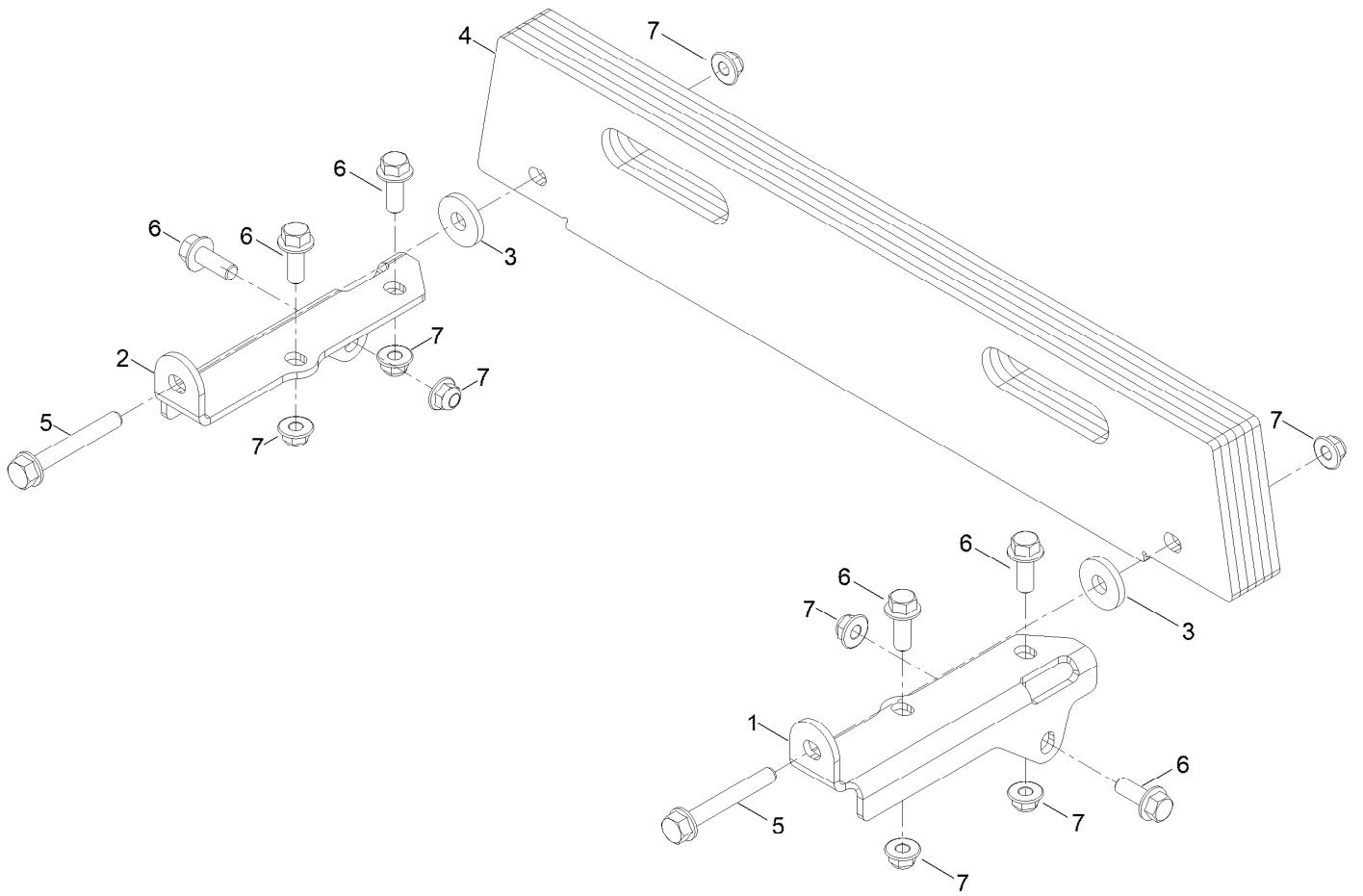
# Blower Assembly No. 140-5032



## Blower Assembly No. 140-5032 (continued)

<i>Ref.</i>	<i>Part Number</i>	<i>Qty.</i>	<i>Description</i>	<i>Ref.</i>	<i>Part Number</i>	<i>Qty.</i>	<i>Description</i>
1	133-9287-03	1	Frame-Blower	17	140-5020	1	Bolt Shoulder
2	121-0751	1	Spindle ASM	18	137-7040	1	Spring-Return, Pedal
2:2	120-7935	2	Spacer	19	139-1719	1	Screw-HH
2:3	136-5441	2	Bearing-Ball	20	137-5004	1	Blower Chute ASM
3	32144-70	4	Screw-HWHTF	21	120-7950	10	Screw-Torx
4	137-7009	1	Shaft-Spindle	22	136-9187	5	Insert-T-Nut
5	133-4492	1	Pulley-Blower	23	137-5003	1	Blower Cover ASM
6	133-4336	1	Fan-Blower	23:2	136-4164	1	Decal-Danger
7	3290-465	1	Washer-Belleville	24	3258-166	5	Screw-PRH
8	108-8823	1	Screw-HH	25	139-2560	1	Bolt-Shoulder
9	3219-16	1	Nut-Hex	26	133-7058	1	Latch-Blower
10	140-5015	1	Spacer-Idler Arm	27	119-4042	1	Nut-HF, NI
11	140-5019	1	Idler Arm, Blower	28	133-7048	1	Spring-Torsion
12	138-7597	1	Pulley-Idler, Flat	30	98-8332	1	Knob
13	5-4460	1	Washer-Pivot	31	103-4080	2	Latch-Rubber
14	119-4041	3	Nut-HF	32	137-3073	4	Washer-Plain
15	139-1723	1	Washer-Flat	33	3274-39	4	Screw-HSBH
16	120-2779	1	Screw-HH	34	136-9213-03	1	Guard-Blower

# Weight Assembly



## Weight Assembly (continued)

<i>Ref.</i>	<i>Part Number</i>	<i>Qty.</i>	<i>Description</i>	<i>Ref.</i>	<i>Part Number</i>	<i>Qty.</i>	<i>Description</i>
1	147-7590-03	1	Bracket-Weight Titan [black]	5	140-5097	2	Screw-Spcl
2	147-7591-03	1	Bracket-Weight Titan [black]	6	139-2597	6	Screw-HHF
3	87-5330	2	Washer	7	119-4042	8	Nut-HF, NI
4	147-7582-03	4	Weight-Bagger				



**Count on it.**