



## 21in Recycler<sup>®</sup> Mower

Model No. 22167 - 240000001 and up.

### Parts Catalog

---

#### Ordering Replacement Parts

To order replacement parts, please supply: the part number, the quantity, and the description of each part desired.

#### Understanding Reference Numbers

Each identified part in an illustration has a reference number. The reference number for a part also appears in the parts list, along with other information about the part.

This catalog uses two special reference number formats, one to indicate parts in a service assembly and another to indicate the quantity of a given part in an illustration.

#### Service Assembly Reference Numbers

Parts in service assemblies have reference numbers in the form **a:b**. The **a** represents the reference number of the entire service assembly and the **b** represents a sequential number unique to each part within the service assembly.

For example, a wheel assembly might be identified by reference number 6, the tire by **6:1**, the valve by **6:2**, and the wheel by **6:3**. When you order the assembly identified by reference number 6, you receive all parts identified by reference numbers 6:1, 6:2, and 6:3. However, you may also order any part individually. Reference numbers of this type appear in illustrations and in part lists.

#### Reference Numbers Indicating Quantity

In an illustration, if a reference number indicates more than one part, the reference number has the form **nX y**. The **n** represents the quantity of the part, the **X** is the multiplication symbol, and the **y** represents the reference number.

For example, in an illustration, the reference number **2X 37** means that two of the parts identified by reference number 37 are indicated.

# Part Description Abbreviations

Part descriptions in this catalog may include the following abbreviations.

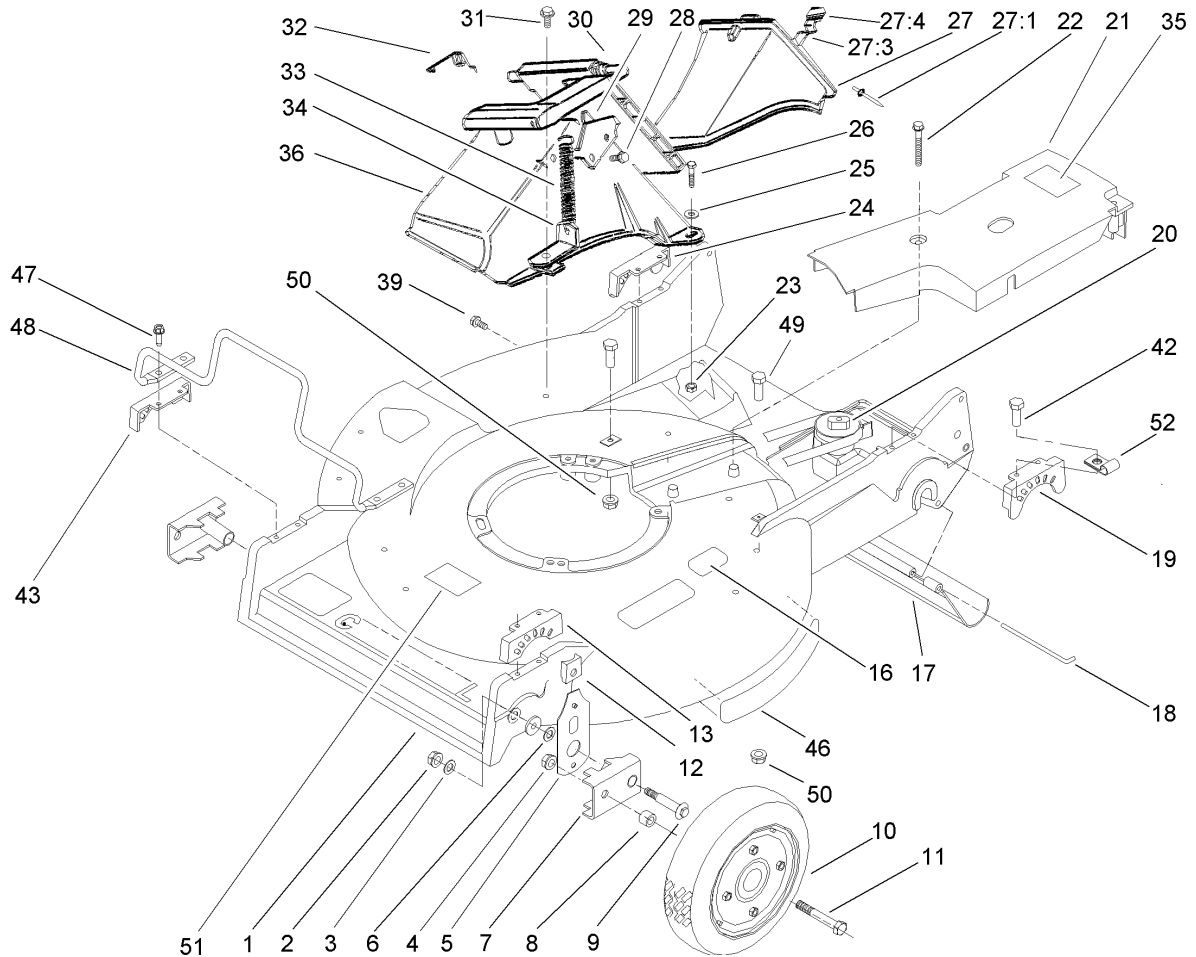
AR. ....	as required	HYD. ....	hydraulic
ASM. ....	assembly	INC. ....	incorporated
CARR. ....	carriage	LH. ....	left hand
DEG. ....	degrees	NI. ....	nylon insert
FH. ....	flat head	PPH. ....	phillips pan head
GA. ....	gauge	PTH. ....	phillips truss head
HF. ....	hex flange	PTO. ....	power take off
HH. ....	hex head	RH. ....	right hand
HHF. ....	hex head flange	SFH. ....	slotted fillister head
HHFTF. ....	hex head flange thread forming	SHH. ....	slotted hex head
HJ. ....	hex jam	SHWH. ....	slotted hex washer head
HLH. ....	hex lag head	SPH. ....	slotted pan head
HOC. ....	height-of-cut	SQH. ....	square head
HS. ....	hex	SRH. ....	slotted round head
HSBH. ....	hex socket button head	STD. ....	standard
HSFH. ....	hex socket flat head	TAP. ....	self tapping
HS. ....	hex socket head	TTH. ....	torx truss head
HWH. ....	hex washer head	WH. ....	wing head
HWHTF. ....	hex washer head thread forming		

## Footnotes

- ❶ Not illustrated
- ❷ Not serviced separately
- ❸ Obtain from your local Toro Distributor
- ❹ Obtain Parts From Honda

## Contents

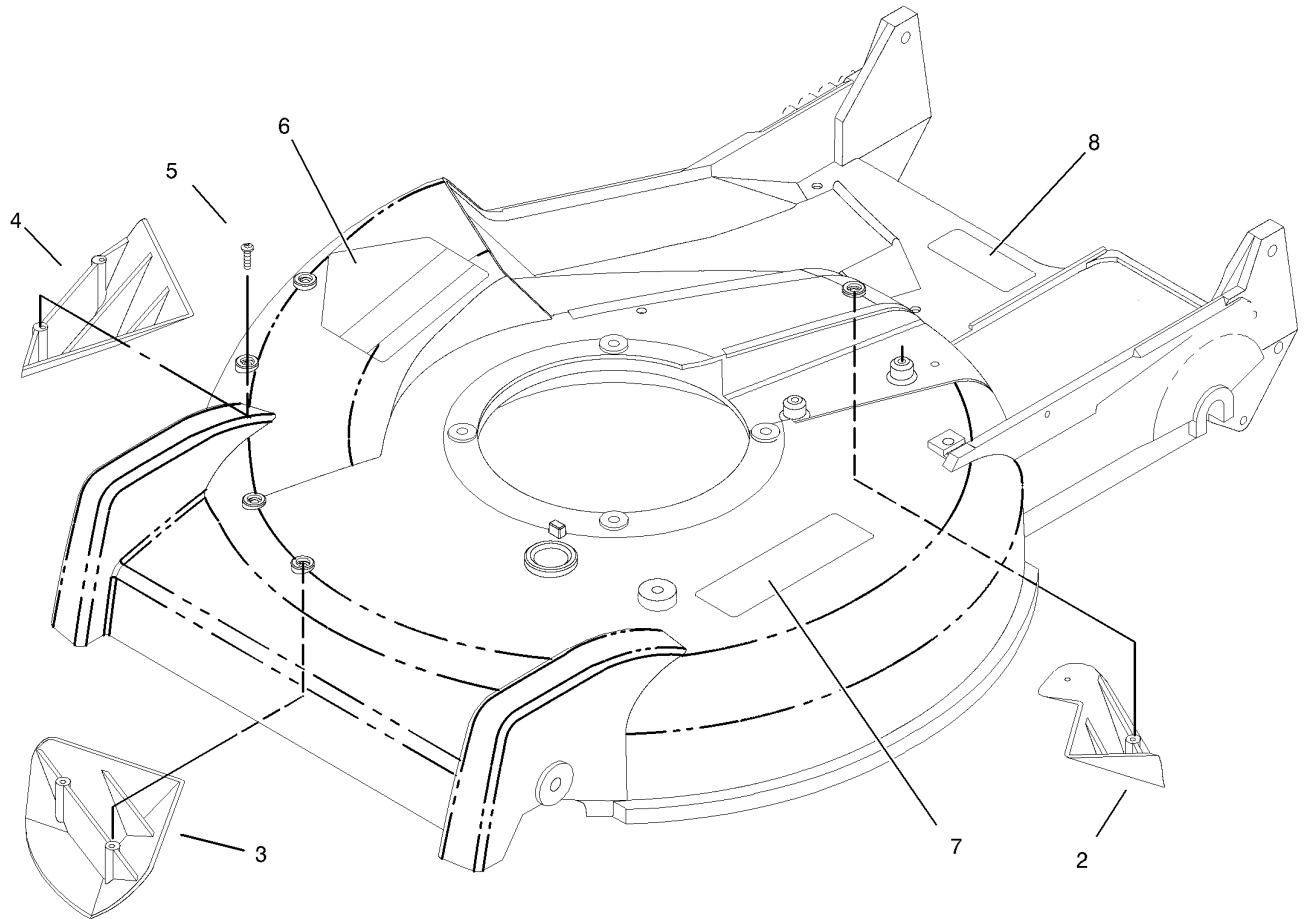
Description	Page	Description	Page
Housing Assembly	..... 3	Recoil Starter Assembly Honda GXV160K1 A12	..... 17
Housing Assembly No. 98-7139	..... 4	Fan Cover Assembly Honda GXV160K1 A12	..... 18
Wheel and Tire Assembly No. 100-2870	..... 5	Carburetor Assembly Honda GXV160K1 A12	..... 19
Gear Case Assembly No. 74-1861	..... 6	Air Cleaner Assembly Honda GXV160K1 A12	..... 21
Engine and Blade Assembly	..... 7	Muffler Assembly Honda GXV160K1 A12	..... 22
Handle and Control Assembly	..... 8	Flywheel Assembly Honda GXV160K1 A12	..... 23
Rear Axle Assembly	..... 9	Control Assembly Honda GXV160K1 A12	..... 24
Wheel and Tire Assembly No. 100-2860	..... 10	Label Assembly and Gasket Kits Honda GXV160K1 A12	..... 25
Grass Bag Assembly No. 106-0975	..... 11		
Cylinder Head Assembly Honda GXV160K1 A12	..... 12		
Cylinder Barrel Assembly Honda GXV160K1 A12	..... 13		
Crankshaft and Piston Assembly Honda GXV160K1 A12	..... 15		
Camshaft Assembly Honda GXV160K1 A12	..... 16		



## Housing Assembly

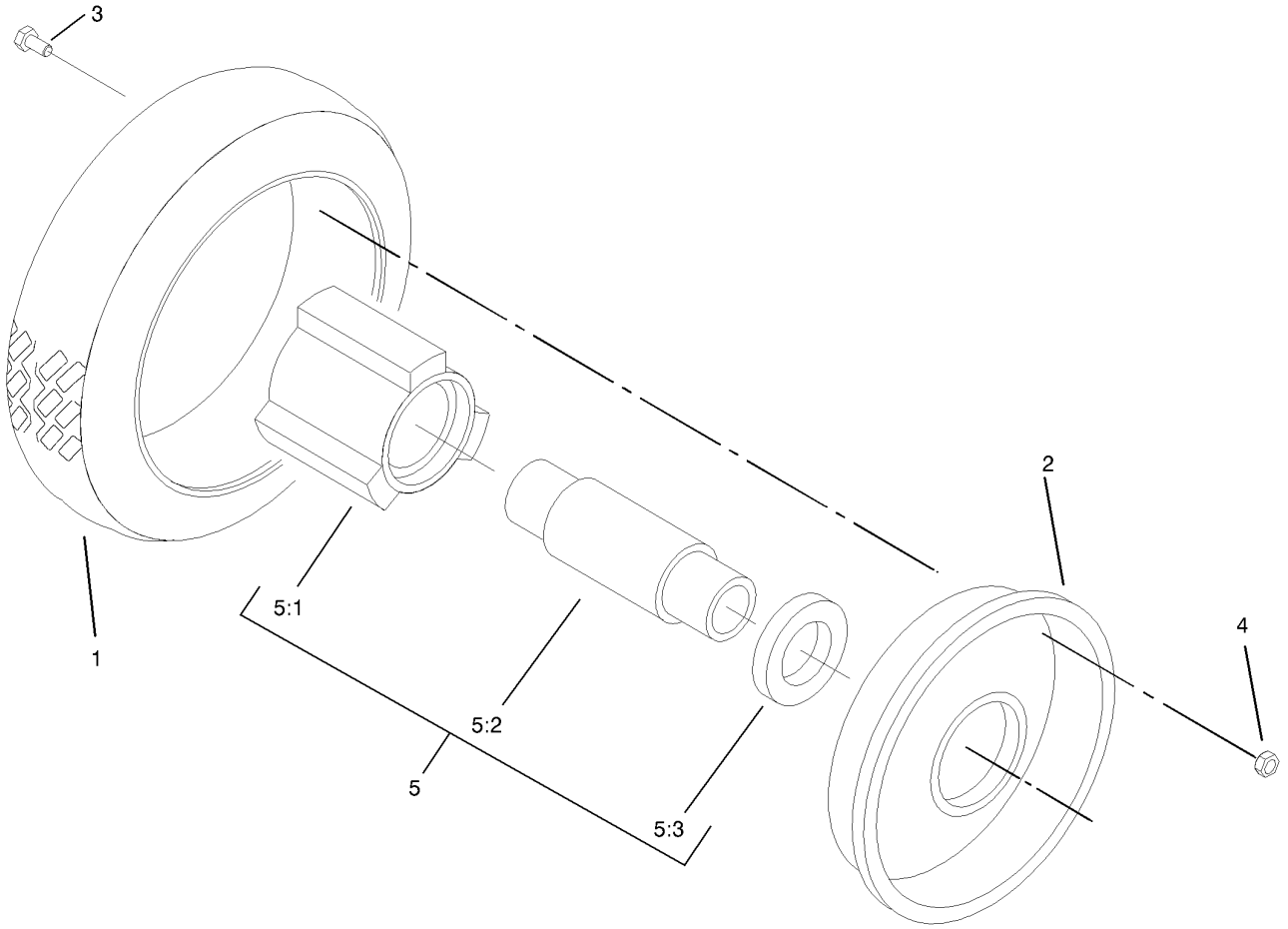
Ref	Part No.	Qty.	Description
1	98-7139	1	Housing
2	3296-6	2	Nut-Lock, NI
3	40-1940	4	Washer
4	32152-2	2	Nut-Hex
5	66-7560	2	Front Spring Arm ASM
6	257-3	2	Washer-Thrust
7	61-8300	2	Arm-Pivot, Front
8	52-2480	2	Spacer-Wheel
9	27-6232	2	Bolt-Wheel
10	100-2870	2	Wheel And Tire ASM
11	323-12	2	Screw-HH
12	25-7740	2	Knob-Arm
13	49-8760	1	Quadrant-Front, LH
16	105-2625	1	Decal-Std, Safety
17	44-0580	1	Shield-Trailing
18	33-3208	1	Rod-Shield
19	49-8740	1	Quadrant-Rear, LH
20	74-1861	1	Gear Case ASM
21	74-1770	1	Cover-Belt
22	37-7260	2	Screw-HH
23	3296-42	2	Nut-Lock, NI
24	49-8750	1	Quadrant-Rear, RH
25	3256-22	2	Washer-Flat
26	321-7	2	Screw-HH

Ref	Part No.	Qty.	Description
27	77-0500	1	Discharge Plug ASM
27:1	3295-35	1	Rivet-Head, Flat
27:3	76-4640	1	Latch-Plug, Discharge
27:4	76-4650	1	Grip-Latch
28	46-8090	2	Screw-Plastite
29	93-3154	1	Latch-Plate
30	93-7351	1	Discharge Door ASM
31	46-6811	1	Screw-HWH
32	80-3770	1	Retainer-Door
33	76-4660	1	Spring-Door
34	71-9350	1	Bracket-Spring
35	52-2620	1	Label-Grease
36	82-9152	1	Tunnel-Discharge
39	46-6810	1	Screw And Washer ASM
42	49-2040	4	Screw-Tapping
43	49-8770	1	Quadrant-Front, RH
46	106-0689	1	Decal
47	32144-86	4	Screw-HH
48	99-6722	1	Guard-Engine
49	323-6	2	Screw-HH
50	3296-39	2	Nut-Lock, NI
51	68-7410	1	Decal-Blade
52	2412-72	1	Clip-Closed, Insulated



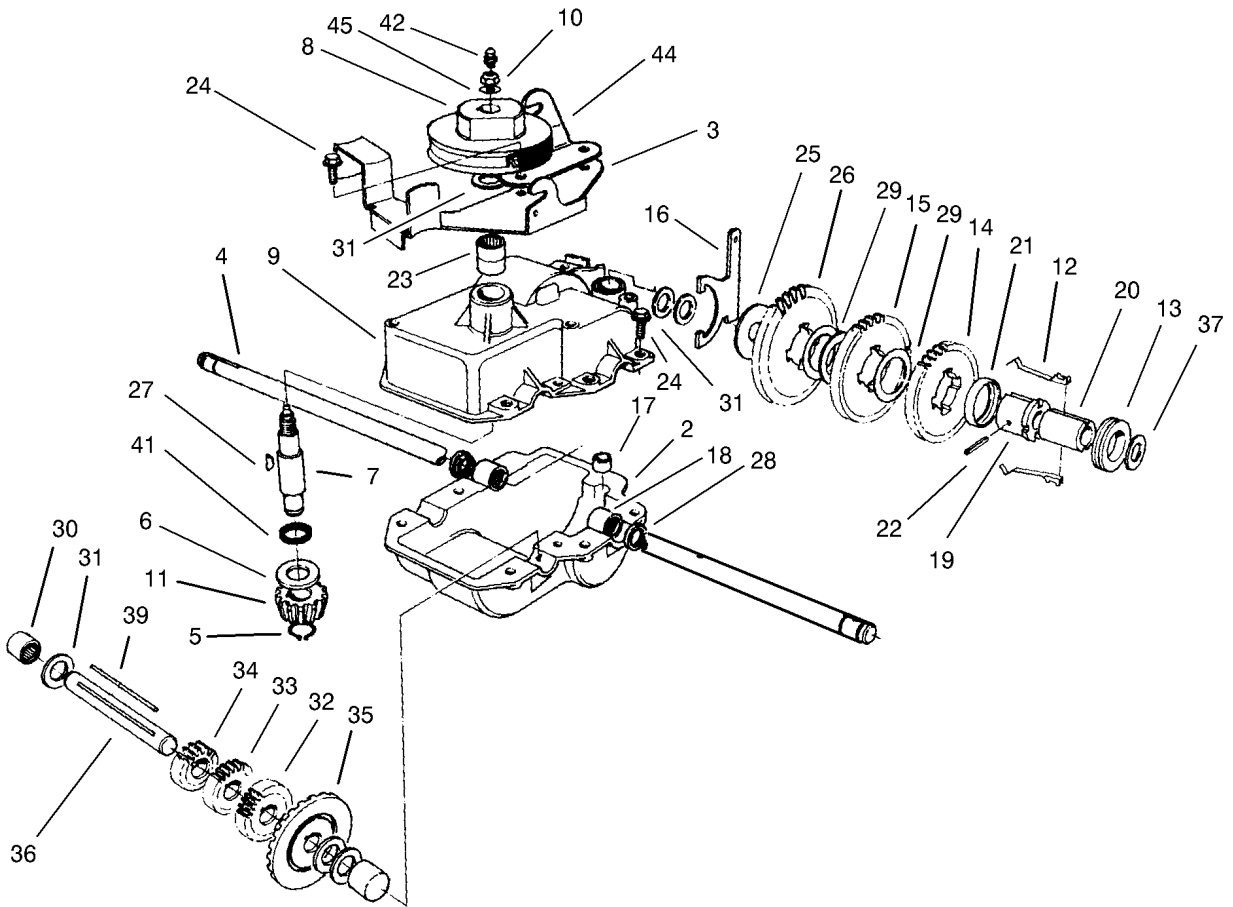
### Housing Assembly No. 98-7139

Ref	Part No.	Qty.	Description				
2	92-1750	1	Kicker-Rear				
3	92-1720	1	Kicker-Front				
4	92-1730	1	Kicker-RH				
5	32144-111	6	Screw-PPH				
6	39-5770	1	Decal-Danger				
7	93-0248	1	Decal-Warning				
8	92-1779	1	Decal-Warning				



### Wheel and Tire Assembly No. 100-2870

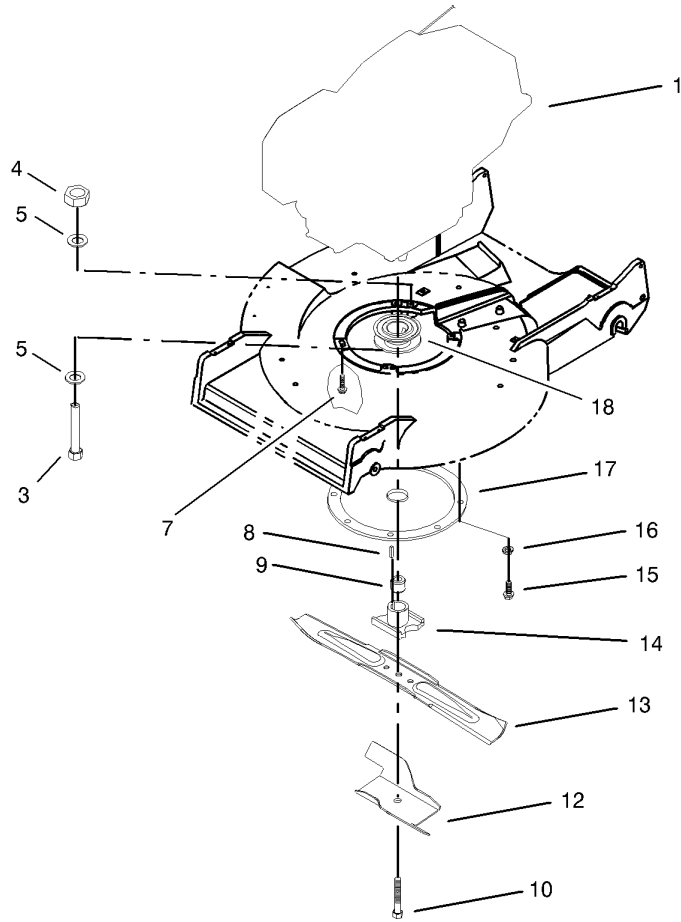
Ref	Part No.	Qty.	Description
1	53-7740	1	Tire
2	53-7780-06	2	Plate-Wheel, Half
3	321-2	4	Screw-HH
4	3296-42	4	Nut-Lock, NI
5		1	Hub And Bearing ASM
5:1	52-2410	1	Hub-Bearing
5:2	52-2440	1	Spacer-Bearing
5:3	52-2450	2	Bearing-Wheel

### Gear Case Assembly No. 74-1861

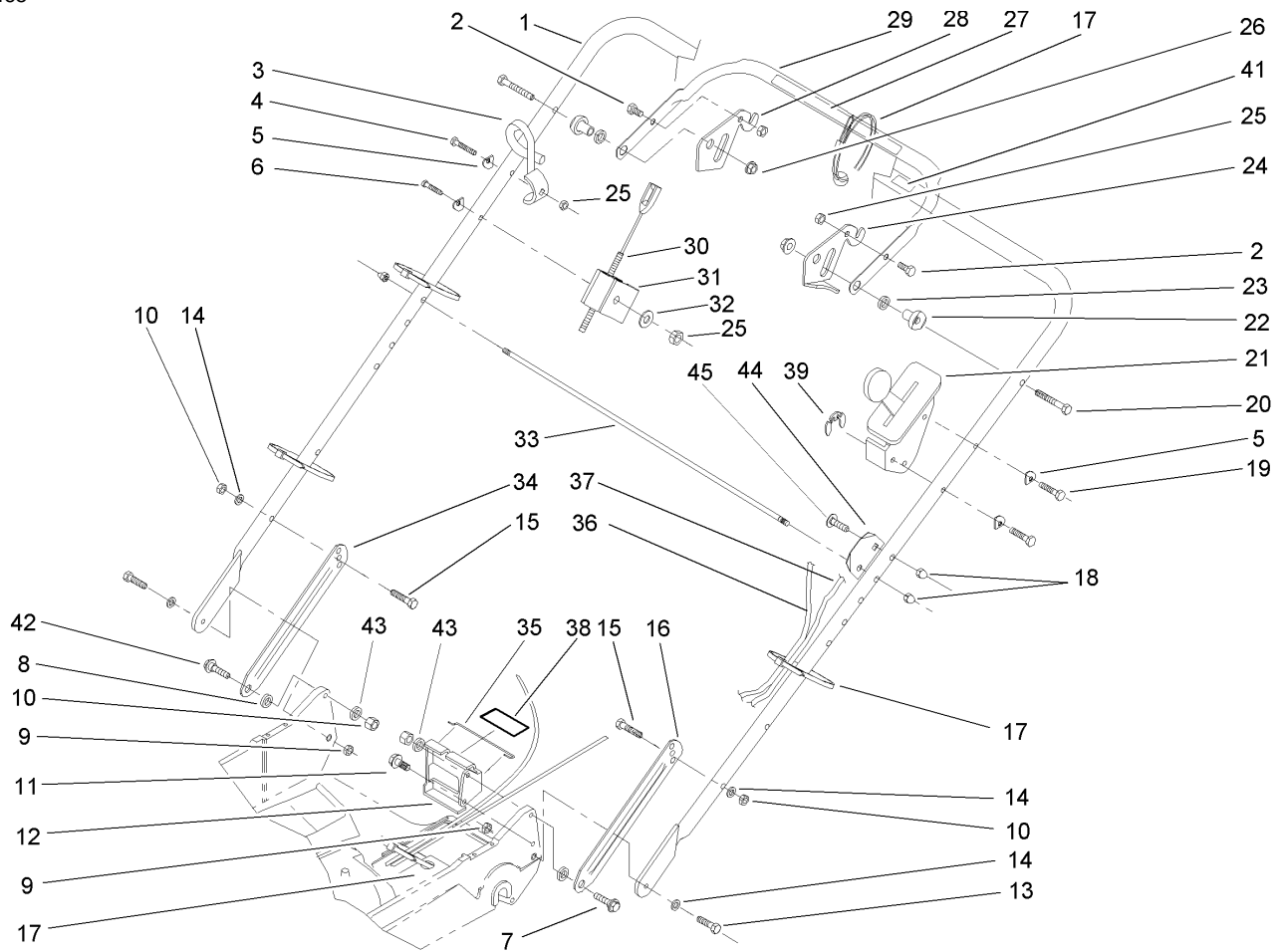
Ref	Part No.	Qty.	Description
2	74-1920	1	Case-Gear, Lower
3	49-8461-03	1	Bracket-Guide, Belt
4	74-1890	1	Shaft-Output
5	32151-57	1	Ring-Retaining
6	47-2910	1	Washer-Thrust
7	68-8190	1	Shaft-Input
8	39-6740	1	Pulley
9	74-1880	1	Case-Gear, Upper
10	3296-5	1	Nut-Lock, NI
11	39-6660	1	Pinion-Bevel
12	29-9330	2	Key-Shift
13	29-9340	1	Collar-Shift
14	42-4740	1	Gear-38 Tooth
15	29-9271	1	Gear-42 Tooth
16	60-8870	1	Yoke-Shift
17	29-9570	1	Bushing-Yoke
18	47-6730	2	Seal-Oil
19	55-8010	1	Sleeve-Gear
20	39-6720	1	Sleeve
21	55-8020	1	Retainer-Key
22	3285-19	1	Pin-Groove
23	47-7270	2	Bearing
24	49-2040	6	Screw-Tapping
25	29-9690	1	Washer

Ref	Part No.	Qty.	Description
26	46-3560	1	Gear
27	3257-1	2	Key-Woodruff
28	48-2060	2	Bearing-Roller
29	36-4770	3	Washer
30	252-103	2	Bearing-Closed
31	36-4792	4	Washer-Thrust
32	39-6650	1	Gear-18t
33	46-3550	1	Gear-14t
34	46-3540	1	Gear-12t
35	74-1760	1	Gear-Bevel
36	53-7950	1	Shaft-Intermediate
37	36-4780	3	Washer
39	39-7842	1	Key
41	47-7260	1	Seal
42	302-63	1	Zerk
44	74-1750-03	1	Brake-Engage, Traction
45	3256-45	1	Washer-Flat



## Engine and Blade Assembly

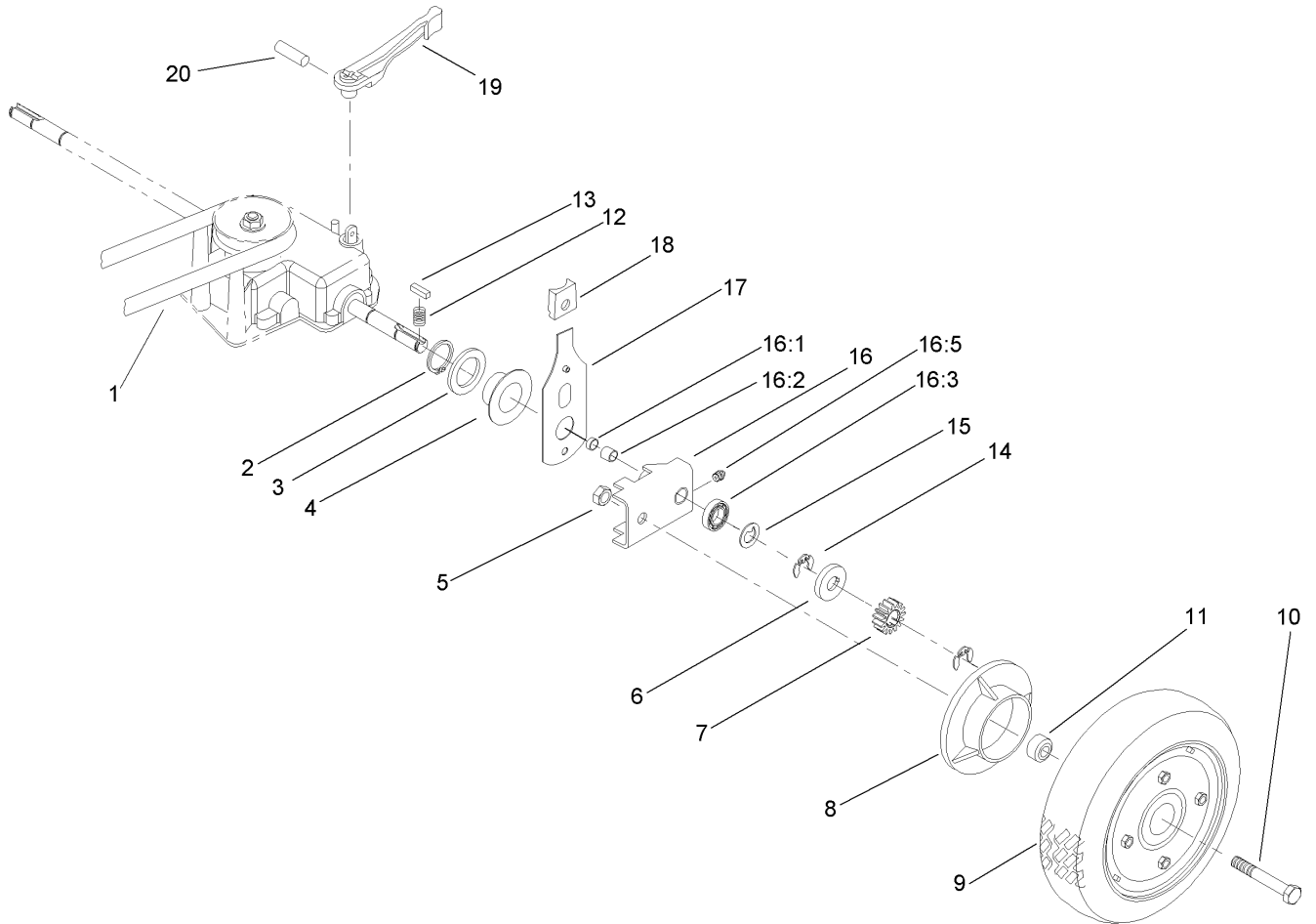
Ref	Part No.	Qty.	Description				
1	103-3380	1	Engine-Honda, 5.5hp				
3	322-10	1	Screw-HH				
4	3296-29	1	Nut-Lock, NI				
5	3256-23	2	Washer-Flat				
7	103-2678	3	Screw-Shoulder				
8	5-1077	1	Key-Square				
9	103-3795	1	Spacer-Retainer, Blade				
10	105-8579	1	Bolt-Blade				
12	92-1599-03	1	Stiffener-Blade				
13	14-9419	1	Blade				
14	52-2170	1	Retainer-Blade				
15	32144-70	3	Screw-HH				
16	3254-6	3	Washer-Lock, Internal				
17	65-5860	1	Protector-Crankshaft				
18	46-7910	1	Pulley-Driver				



## Handle and Control Assembly

Ref	Part No.	Qty.	Description
1	98-2000-03	1	Handle
2	321-4	2	Screw-HH
3	46-8081	1	Guide-Rope
4	321-9	1	Screw-HH
5	3-7501	4	Washer
6	321-15	1	Screw-HH
7	27-7210	1	Screw-Shoulder
8	3-3287	2	Spacer-Latch, Handle
9	3296-47	2	Nut-Lock, NI
10	3296-29	4	Nut-Lock, NI
11	32144-70	1	Screw-HH
12	74-1741	1	Bracket-Adjustment, Traction
13	322-6	2	Screw-HH
14	3290-456	4	Washer-Belleville
15	322-7	2	Screw-HH
16	100-3298-03	1	Latch-Handle, LH
17	3290-378	5	Tie-Cable
18	32111-7	3	Nut-Cap
19	321-13	2	Screw-HH
20	322-11	2	Screw-HH
21	103-5296	1	Control-Throttle
22	49-1630	2	Spacer-Support
23	256-276	2	Spacer-Nylon
24	66-5350	1	Lever-Control

Ref	Part No.	Qty.	Description
25	3296-42	4	Nut-Lock, NI
26	3296-58	2	Nut-Lock NI
27	106-0690	1	Decal-Traction
28	77-5270	1	Lever-Control
29	61-8270-03	1	Bar-Control
30	103-2683	1	Cable-Brake
31	46-6980	1	Support-Cable
32	3256-22	1	Washer-Flat
33	48-2810	1	Rod-Support, Bag
34	100-3297-03	1	Latch-Handle, RH
35	46-7030	1	Retainer-Cable
36	74-1791	1	Cable-Traction
37	106-0888	1	Cable ASM-Throttle
38	74-1970	1	Decal-Position, Gear
39	32151-86	2	E-Ring
41	98-4387	1	Decal-Protection, Ear
42	27-7211	1	Screw-Shoulder
43	3256-23	2	Washer-Flat
44	104-1326	1	Plate-Aligning, Bag
45	3229-3	1	Screw-CARR

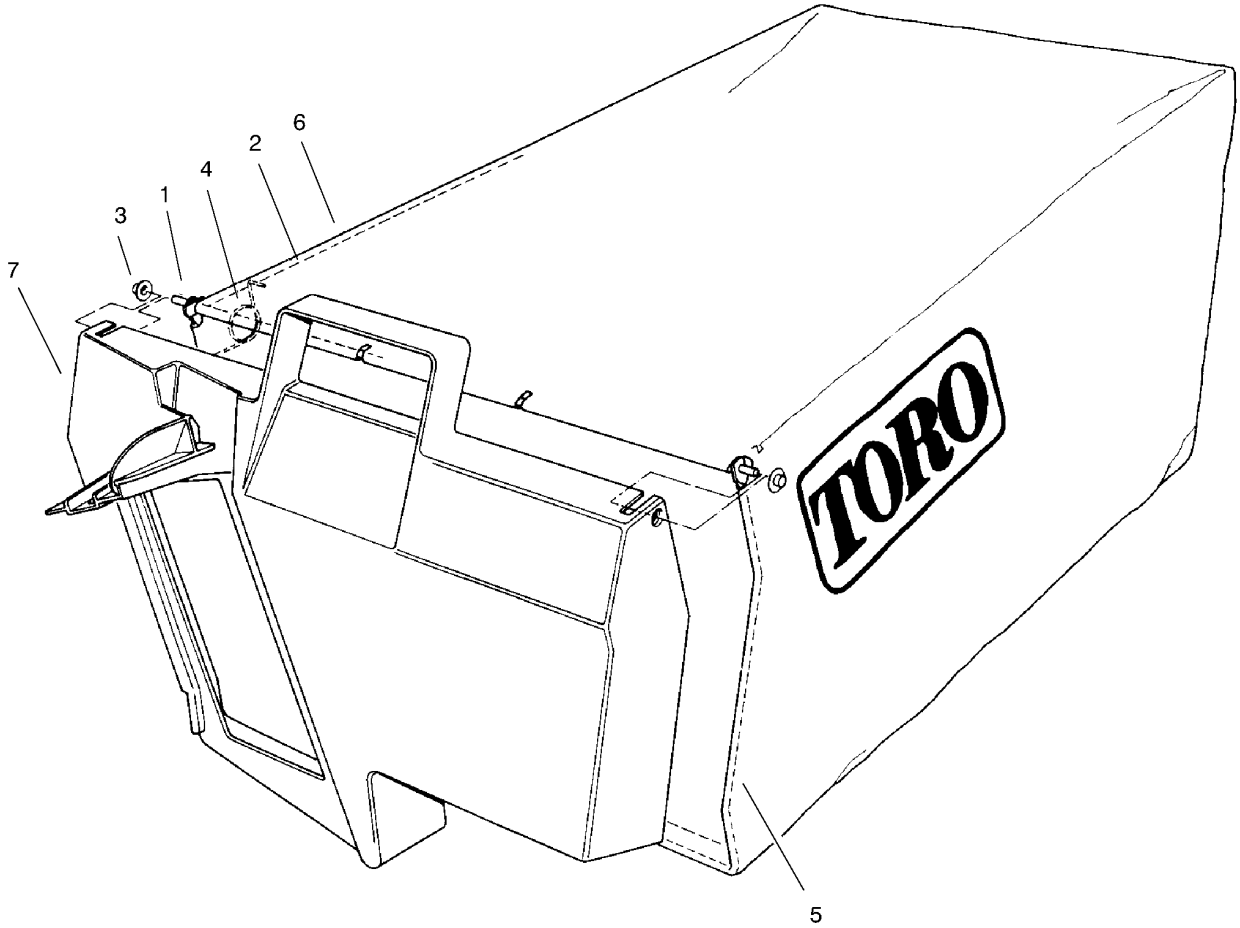


## Rear Axle Assembly

Ref	Part No.	Qty.	Description
1	36-8070	1	V-Belt
2	32151-36	2	Ring-Retaining
3	74-1810	2	Washer
4	48-2170	2	Cap-End
5	32152-2	2	Nut-Hex
6	62-3830	2	Washer-Thrust, Outer
7	39-9160	2	Gear-Pinion
8	74-1640	2	Cover-Wheel
9	100-2860	2	Wheel And Tire ASM
10	323-13	2	Screw-HH
11	74-1650	2	Spacer-Cover, Wheel
12	39-9650	2	Spring-Compression
13	612066	2	Key
14	32151-68	4	Ring-Retaining
15	49-7700	2	Washer-Thrust, Outer
16	74-1851	2	Pivot Arm ASM
16:1	47-6730	1	Seal-Oil
16:2	48-2060	1	Bearing-Roller
16:3	52-2450	1	Bearing-Wheel
16:5	92-6316	1	Zerk
17	66-7561	2	Rear Spring Arm ASM
18	25-7740	2	Knob-Arm
19	74-1960	1	Lever-Shift
20	32121-99	1	Pin-Coil

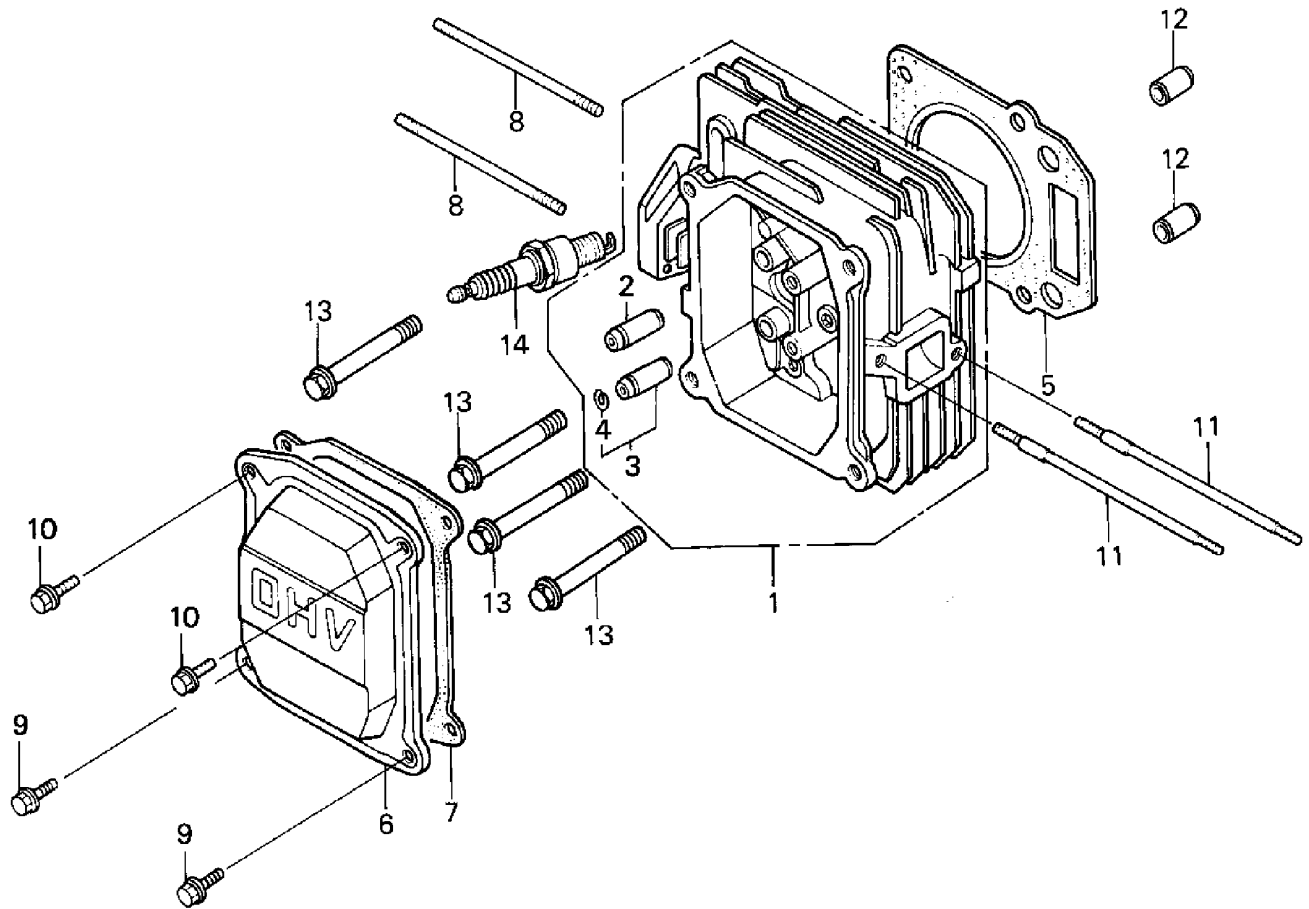
Ref	Part No.	Qty.	Description
●99	106-0975	1	Grass Bag ASM





### Grass Bag Assembly No. 106-0975

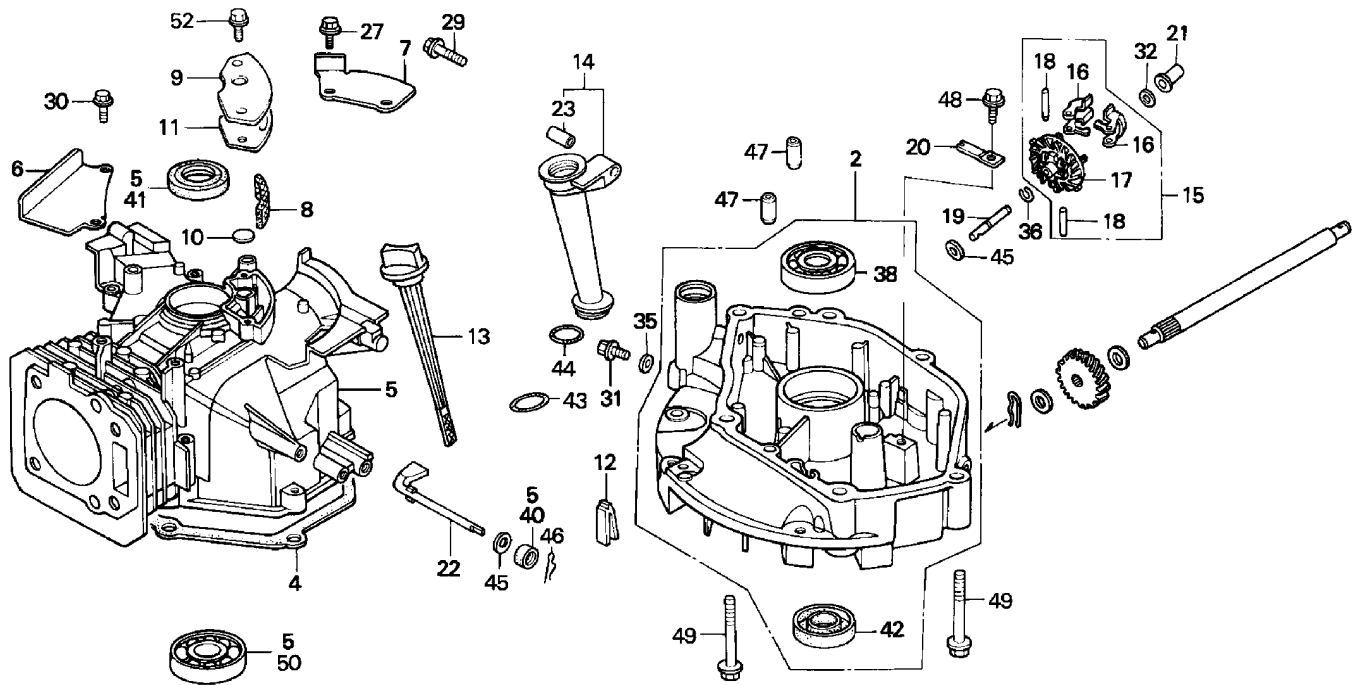
Ref	Part No.	Qty.	Description
1	33-4820	1	Hinge-Door, Bag
2	42-4030	1	Frame-Bag, Upper
3	3290-422	2	Nut-Push
4	36-6910	2	Spring
5	42-4020	1	Frame-Bag
6	44-0525	1	Bag-Grass
7	48-2840	1	Door-Bag, Grass



## Cylinder Head Assembly Honda GXV160K1 A12

Ref	Part No.	Qty.	Description
1	12200-ZE7-010	1	Head-Cylinder
2	12204-ZE1-306	1	Guide-Valve
3	12205-ZE1-315	1	Guide-Valve
4	12216-ZE5-300	1	Clip-Valve, Guide
5	12251-ZE7-000	1	Gasket-Cylinder, Head
6	12311-ZG9-800	1	Cover-Head
7	12391-ZE7-T00	1	Gasket-Cylinder Head Cover
8	90048-ZC3-000	2	Bolt-Stud
9	90013-883-000	2	Bolt-Flange
10	90013-883-000	2	Bolt-Flange
11	90043-ZE6-000	2	Bolt-Stud
12	94301-10160	2	Pin-Dowel
13	95701-08050-00	4	Bolt-Flange
14	92-2153	1	Spark Plug (Bpr4es)(Ngk)
1	98079-54855	1	Spark Plug (W14epru)(Denso)

Ref	Part No.	Qty.	Description
5	KW10676	1	Spark Plug (Bpr5es)(Ngk)
4	98079-55855	1	Spark Plug (W16epru)(Denso)
5	81-3250	1	Spark Plug (Bpr6es)(Ngk)
4	98079-56855	1	Spark Plug (W20epru)(Denso)

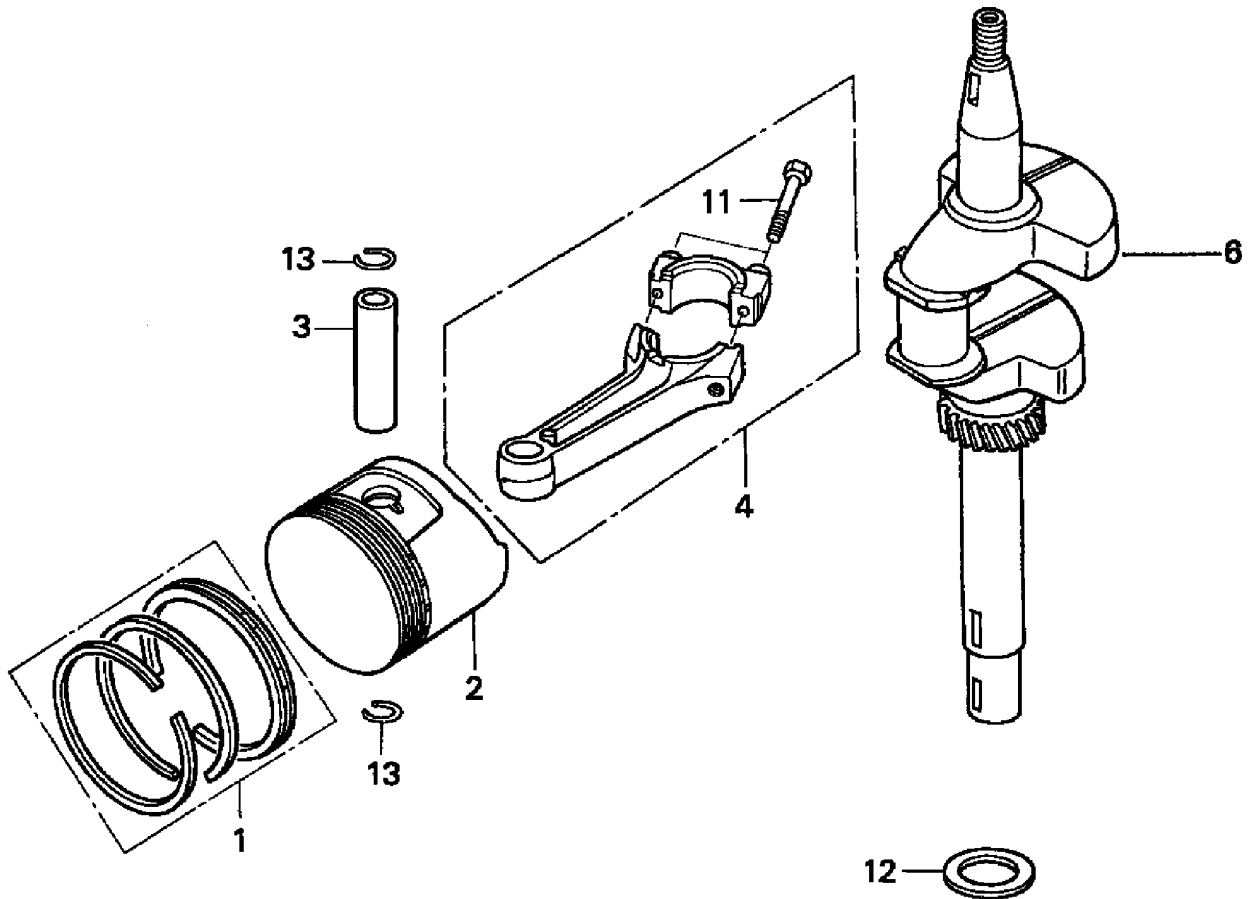


## Cylinder Barrel Assembly Honda GXV160K1 A12

Ref	Part No.	Qty.	Description
④2	11300-ZE7-W00	1	Oil Pan Assembly
④4	11381-ZE7-M10	1	Gasket-Pan, Oil
④5	12000-ZE7-405	1	Cylinder Assembly
④6	12125-ZE7-000	1	Plate-Guide
④7	12126-ZE7-W00	1	Plate A-Guide
④8	12367-883-003	1	Filter-Breather
④9	12370-ZE7-000	1	Cover-Breather
④10	12372-ZE7-000	1	Breather-Valve
④11	12373-ZE7-000	1	Gasket-Breather, Cover
④12	15355-ZE7-000	1	Rubber-Oil, Return
④13	15620-ZE6-810	1	Dipstick-Oil
④14	15630-ZE6-810	1	Extension-Oil, Filler
④15	16510-ZE6-000	1	Governor Assembly

Ref	Part No.	Qty.	Description
④16	16511-ZE1-000	2	Weight-Governor
④17	16512-ZE6-000	2	Holder-Governor, Weight
④18	16513-ZE1-000	2	Pin-Governor, Weight
④19	16515-ZE6-010	1	Shaft-Governor, Holder
④20	16525-ZE6-010	1	Plate-Governor Shaft Holder
④21	16531-ZE1-000	1	Slider-Governor
④22	16541-ZE7-000	1	Shaft-Governor, Arm
④23	17240-ZE6-000	1	Collar-Extension
④27	90013-883-000	2	Bolt-Flange
④29	90017-883-000	1	Bolt-Flange (6x32)
④30	90022-888-010	2	Bolt-Flange (6x20)(Ct200)
④31	90131-ZE1-000	1	Bolt-Drain Plug
④32	90451-ZE1-000	1	Washer-Thrust (6mm)

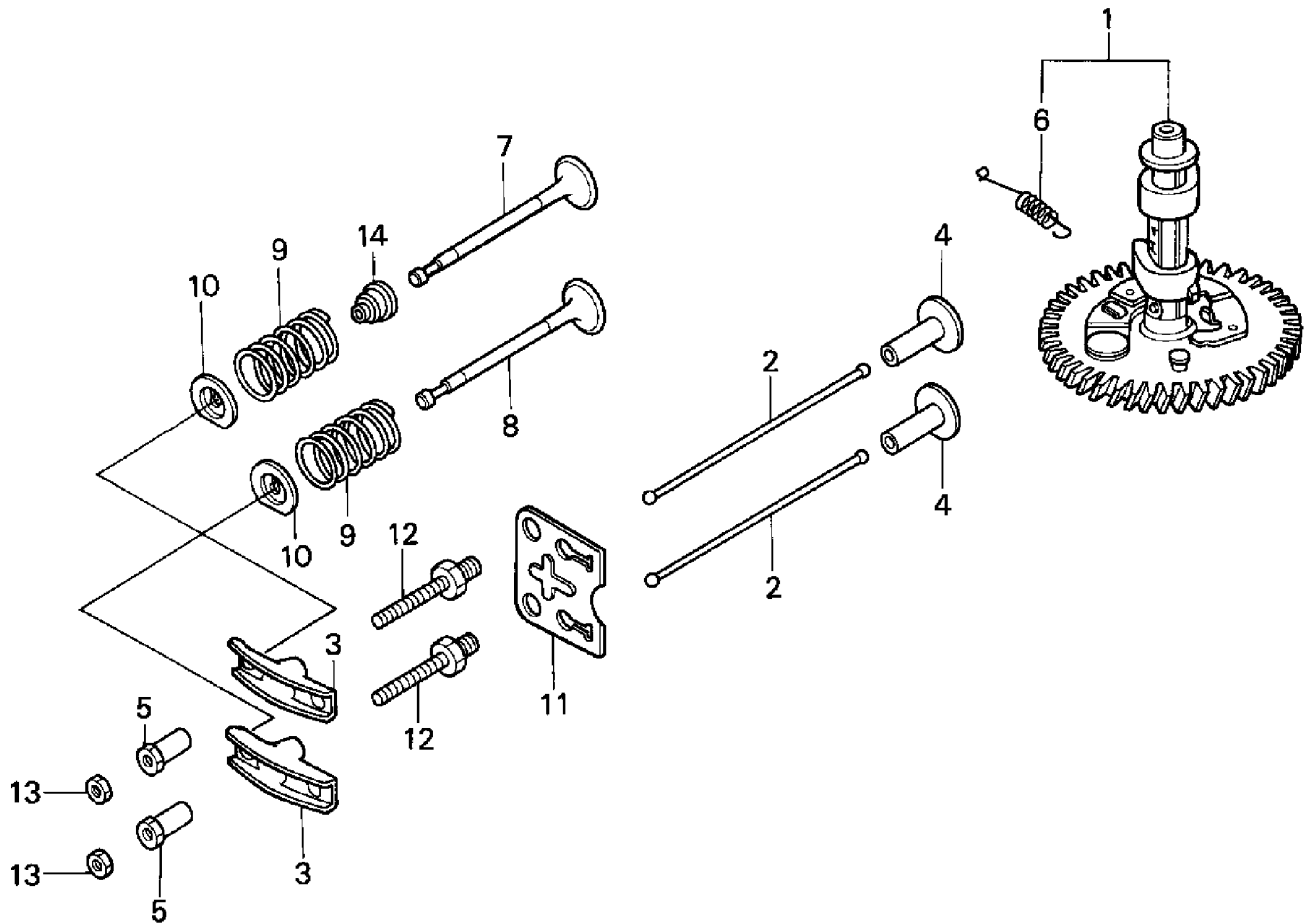




## Crankshaft and Piston Assembly Honda GXV160K1 A12

Ref	Part No.	Qty.	Description
④1	13010-ZF1-023	1	Ring Set-piston(Std)
①④	13011-ZF1-023	1	Ring Set-piston(Os 0.25)
①④	13012-ZF1-023	1	Ring Set-Piston (Os 0.50)
①④	13013-ZF1-023	1	Ring Set-Piston (0.75)
④2	13101-ZE7-010	1	Piston (Std)
①④	13102-ZE7-010	1	Piston (Os 0.25)
①④	13103-ZE7-010	1	Piston (Os 0.50)
①④	13104-ZE7-010	1	Piston (0.75)
④3	13111-ZE1-000	1	Pin-Piston
④4	13200-ZE7-000	1	Connecting Rod Assembly
①④	13200-ZE7-305	1	Connecting Rod Assembly
④6	13310-ZE7-010	1	Crankshaft (N1 Type)
④11	90001-ZE1-000	2	Bolt-Connecting, Rod

Ref	Part No.	Qty.	Description
④12	90401-ZE7-W00	1	Washer-Thrust (25.6mm)
④13	90551-ZE1-000	2	Clip-Piston, Pin (18mm)

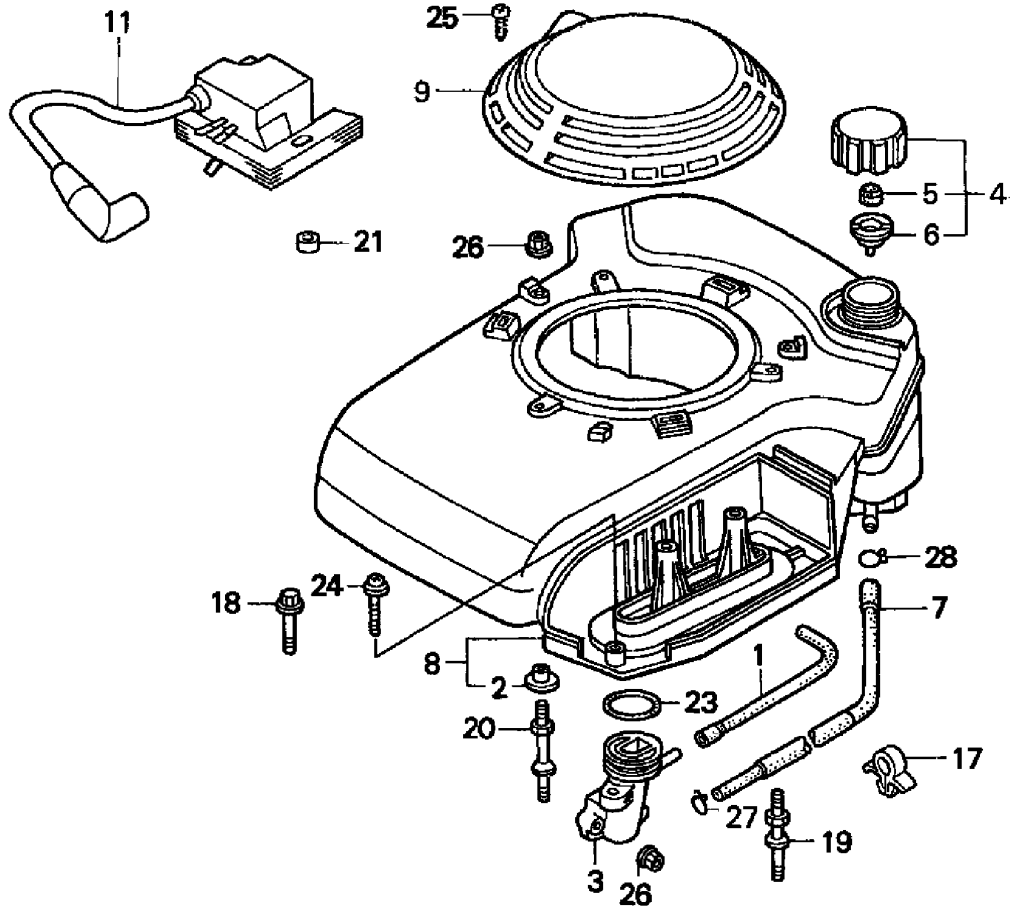


## Camshaft Assembly Honda GXV160K1 A12

Ref	Part No.	Qty.	Description
1	14100-ZE7-000	1	Camshaft Assembly
2	144100-ZE1-010	2	Rod-Push
3	14431-ZE1-000	2	Valve-Rocker, Arm
4	14441-ZE1-010	2	Lifter-Valve
5	14451-ZE1-013	2	Pivot-Rocker, Arm
6	14568-ZE1-000	1	Spring-Weight, Return
7	14711-ZF1-000	1	Valve-Intake
8	14721-ZE7-000	1	Valve-Exhaust
9	14751-ZE1-000	2	Spring-Valve
10	14771-ZE1-000	2	Retainer-Intake Valve Spring
11	14791-ZE1-010	1	Plate-Push Rod Guide
12	90012-ZE0-010	2	Bolt-Pivot (8mm)
13	90206-ZE1-000	2	Nut-Pivot, Adjust

Ref	Part No.	Qty.	Description
14	12209-ZE6-003	1	Seal-Valve, Stem

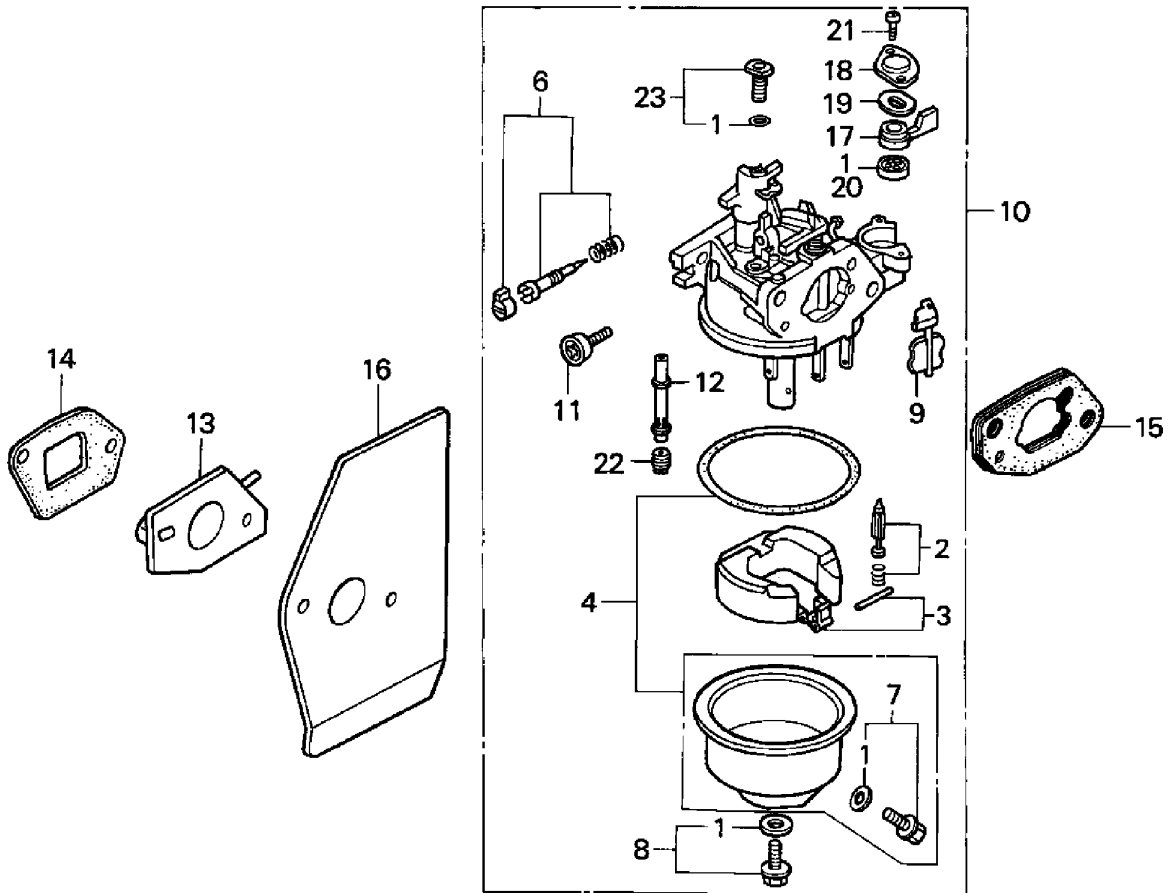




## Fan Cover Assembly Honda GXV160K1 A12

Ref	Part No.	Qty.	Description
④1	15721-ZE7-000	1	Tube-Breather
④2	17216-PE2-003	3	Collar-Air, Cleaner
④3	17410-ZE7-W00	1	Elbow-Air, Cleaner
④4	17620-ZE7-000	1	Fuel Tank Cap Assembly
④5	17622-888-010	1	Sponge-Fuel Cap Breather
④6	17624-ZE7-000	1	Gasket-Fuel, Cap
④7	17700-ZE7-W00	1	Tube-Fuel Tank Assembly
④8	19610-ZE7-W11ZA	1	Cover-Fan (Black)
①④	19610-ZE7-W11ZB	1	Cover-Fan (Bright Red)
④9	19615-ZG9-801ZA	1	Hood-Fan, Cover *Nh1* (Black)
①④	19615-ZG9-801ZB	1	Hood-Fan, Cover *r8* (Bright Red)
④11	30500-ZG9-801	1	Ignition Coil Assembly
①④16	36103-ZE1-000	1	Stop Switch Wire Holder

Ref	Part No.	Qty.	Description
④17	46392-SC2-003	1	Clamp-Brake, Pipe
④18	90015-883-000	1	Bolt-Flange (6x28)
④19	90041-ZE7-W10	2	Bolt-Stud
④20	90042-ZE7-W00	1	Bolt-Stud (Ign Coil)
④21	90402-ZE7-W00	2	Collar-Special
④23	91301-ZG9-800	1	O-Ring (33.3x3.5)
④24	93891-06035-10	1	Washer-Screw (6x35)
④25	93913-24580	1	Screw-Tapping (4x20)
④26	94050-06000	5	Nut-Flange (6mm)
④27	95002-02080	1	Clip-Tube
④28	95002-02100	1	Clip-Tube (Engine Serial Number Up To 6149216)
①④	95002-50000	1	Clip-Tube (Engine Serial Number From 6149217)

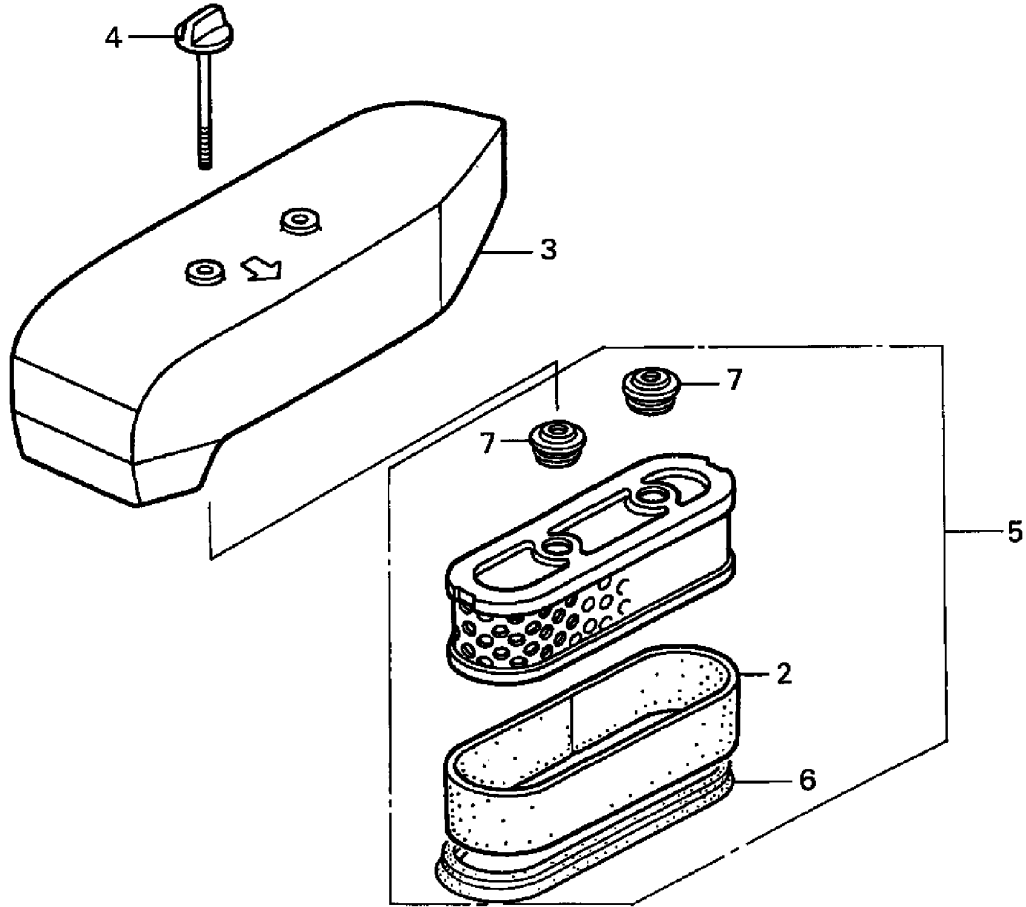


## Carburetor Assembly Honda GXV160K1 A12

Ref	Part No.	Qty.	Description
④1	16010-ZE0-025	1	Gasket-Set
④2	16011-ZE0-005	1	Float-Valve, Set
④3	16013-ZE0-005	1	Float Set
④4	16015-ZE0-831	1	Chamber, Set-Float
④6	16016-ZH7-W01	1	Screw-Set
④7	16024-ZE1-811	1	Screw-Set, Drain
④8	16028-ZE0-005	1	Screw-Set
④9	16045-ZE7-005	1	Choke Set
④10	16100-ZE7-W21	1	Carburetor Assembly
④11	16124-ZE0-005	1	Screw-Throttle, Stop
④12	16166-ZE7-W10	1	Nozzle-Main
④13	16211-ZE7-000	1	Insulator-Carburetor
④14	16212-ZE7-M10	1	Gasket-Insulator

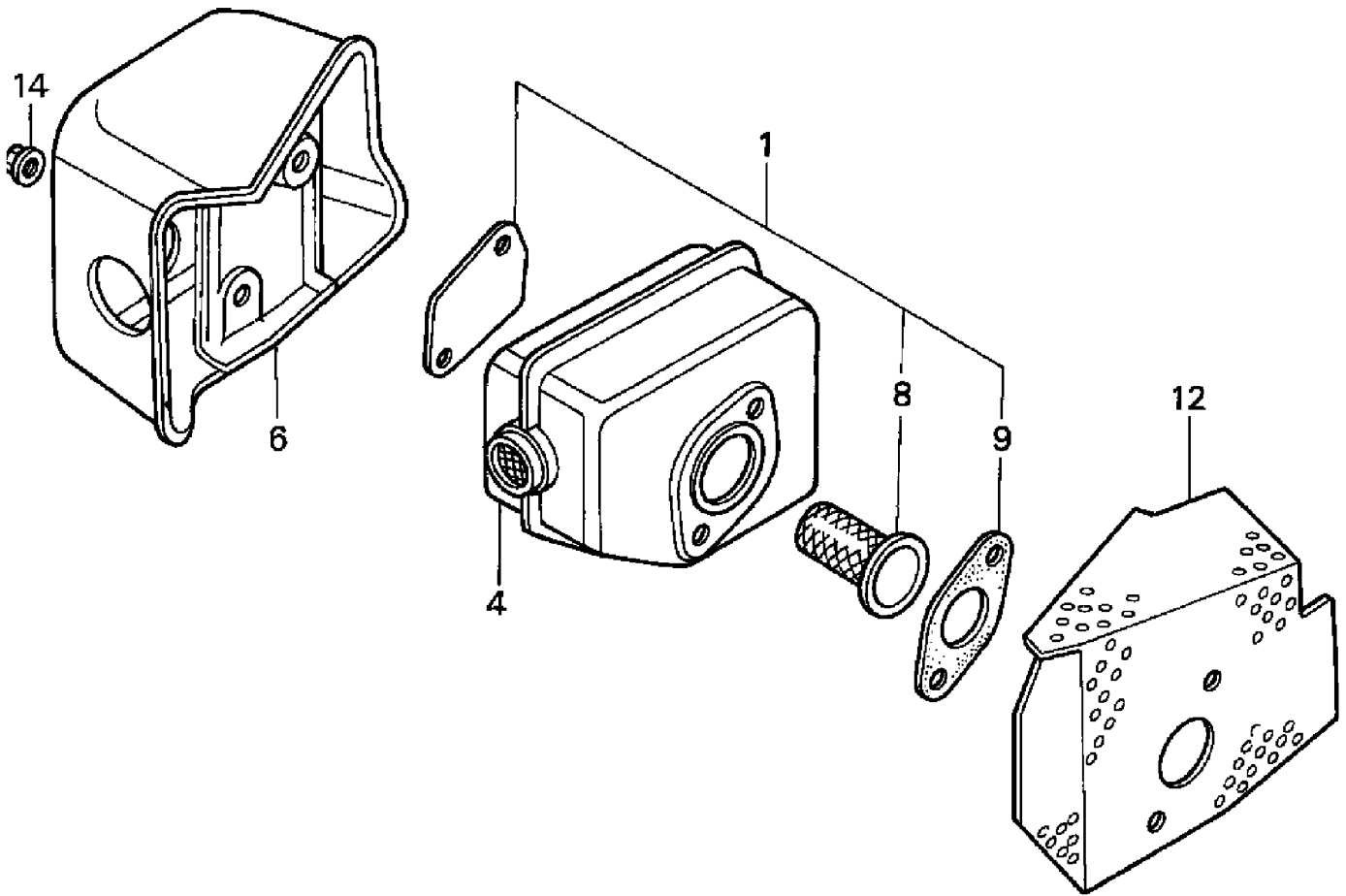
Ref	Part No.	Qty.	Description
④15	16220-ZE6-010	1	Spacer-Carburetor
④16	16221-ZE7-M11	1	Gasket-Carburetor
④17	16953-ZE1-406	1	Lever-valve(Engine Serial Number Up To Be66c A)
①④	16953-ZE1-811	1	Lever-valve(Engine Serial Number Up To Be66c A)
①④	16953-ZE1-812	1	Lever-valve(Engine Serial Number From Be66c B)
④18	16954-ZE1-811	1	Plate-Lever, Setting(Engine Serial Number Up To Be66c A)
①④	16954-ZE1-812	1	Plate-Lever, Setting(Engine Serial Number From Be66c B)
④19	16956-ZE1-811	1	Spring-Valve, Lever
④20	16957-ZE1-812	1	Gasket-Valve
④21	93500-03006	2	Screw-Pan (3x6)(Engine Serial Number From Be66c B)
①④	93500-03008	2	Screw-Pan (3x8)(Engine Serial Number Up To Be66c A)
④22	99101-ZH8-0600	1	Jet- Main (No.60)
①④	99101-ZH8-0620	1	Jet-Main (No.62)





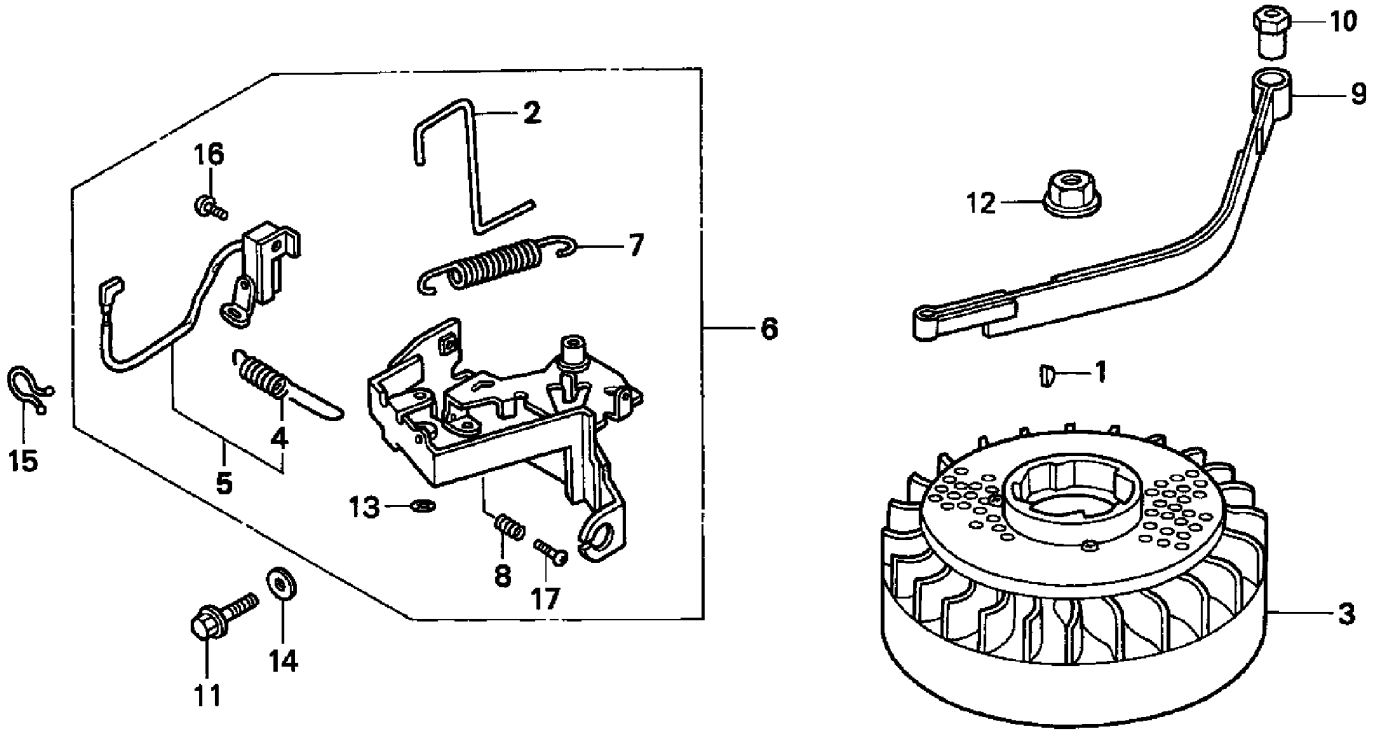
## Air Cleaner Assembly Honda GXV160K1 A12

Ref	Part No.	Qty.	Description				
④2	17218-ZE7-W02	1	Filter (Outer)				
④3	17231-ZE7-W00ZA	1	Cover-Air, Cleaner (Black)				
④4	90004-ZE7-W00	2	Bolt-Air, Cleaner (6x73)				
④5	17211-ZE7-W03	1	Element-Air, Cleaner				
④6	17217-ZE7-W00	1	Gasket-Element				
④7	17232-ZE7-W00	2	Grommet-Air, Cleaner				



## Muffler Assembly Honda GXV160K1 A12

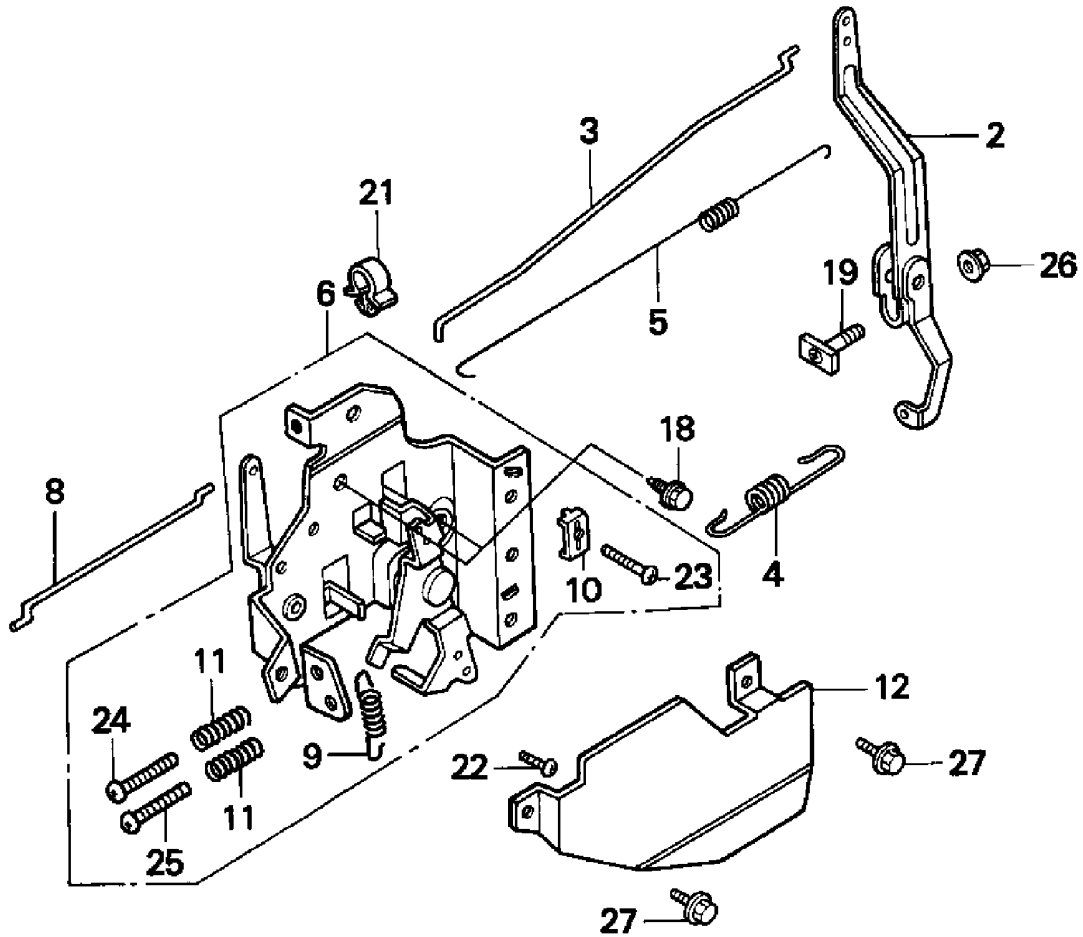
Ref	Part No.	Qty.	Description				
1	06180-ZE6-820	1	Arrester-Spark				
4	18310-ZG9-J01	1	Muffler				
6	18320-ZG9-M01	1	Protector-Muffler				
8	06180-888-505	1	Arrester Kit-Spark				
14	06180-888-810	1	Arrester Kit-Spark				
9	18381-ZE6-820	1	Gasket-Muffler				
12	18381-ZG9-M00	1	Gasket-Muffler				
14	90343-ZE6-000	2	Nut-Self, Lock (6mm)				



## Flywheel Assembly Honda GXV160K1 A12

Ref	Part No.	Qty.	Description
1	13331-357-000	1	Key-Special, Woodruff (25x18)
2	16566-ZE7-W00	1	Rod-Governor Arm, Return
3	31105-ZE7-W00	1	Flywheel Assembly
4	35129-ZG9-800	1	Spring-Switch, Control
5	36100-ZE7-W01	1	Switch Assembly Engine Stop
6	75101-ZE7-W00	1	Brake Lever Assembly
7	75113-ZG9-800	1	Spring-Brake, Lever
8	75114-ZG9-800	1	Spring-Brake, Adjusting
9	75120-ZG9-305	1	Brake
10	75123-ZG9-800	1	Collar-Brake, Shaft
11	90014-952-000	1	Bolt-Flange (6x14)
12	90201-878-003	1	Nut-Special (14mm)
13	90310-ZB7-701	1	Nut-Push (2.6)

Ref	Part No.	Qty.	Description
14	90461-357-000	1	Washer-Sealing (6.5x12)
15	90630-ZE7-W01	1	Clip-Purse, Lock
16	93500-04008-0A	1	Screw-Pan (4x8)
17	93500-05012-0A	1	Screw-Pan (5x12)



## Control Assembly Honda GXV160K1 A12

Ref	Part No.	Qty.	Description
②	16551-ZE7-000	1	Arm-Governor
③	16555-ZE7-000	1	Rod-Governor
④	16561-ZE7-020	1	Spring-Governor (Std)
⑤	16562-ZE6-000	1	Spring-Throttle, Return
⑥	16570-ZE7-020	1	Control Assembly
⑧	16573-ZE7-000	1	Rod-Choke
⑨	16576-ZE7-300	1	Spring-Lever
⑩	16576-891-000	1	Holder-Cable
⑪	16584-883-300	2	Spring-Control, Adjusting
⑫	16585-ZE7-000	1	Protector-Control
⑱	90013-883-000	2	Bolt-Flange
⑲	90015-ZE5-010	1	Bolt-Governor, Arm
㉑	90659-680-013	1	Clip-Wire, Harness

Ref	Part No.	Qty.	Description
⑳	93500-04008-0A	1	Screw-Pan (4x8)
㉓	93500-05016-0A	1	Screw-Pan (5x16)
㉔	93500-05020-0A	1	Screw-Pan (5x20)
㉕	93500-05028-0A	1	Screw-Pan (5x28)
㉖	94050-06000	1	Nut-Flange (6mm)
㉗	95701-06010-00	1	Bolt-Flange (6x10)



## NOTES

## NOTES

