



72in Guardian[®] Recycler Mower Groundsmaster[®] 300 Series

Model No. 30716 - 240000001 and up.

Parts Catalog

Ordering Replacement Parts

To order replacement parts, please supply the part number, the quantity, and the description of each part desired.

Understanding Reference Numbers

Each Identified part in an illustration has a reference number. The reference number for a part also appears in the parts list, along with other information about the part.

This catalog uses two special reference number formats, one to indicate parts in a service assembly and another to indicate the quantity of a given part in an illustration.

Service Assembly Reference Numbers

Parts in service assemblies have reference numbers in the form a:b. The a represents the reference number of the entire service assembly and the b represents a sequential number unique to each part within the service assembly.

For example, a wheel assembly might be identified by reference number 6, the tire by 6:1, the valve by 6:2, and the wheel by 6:3. When you order the assembly identified by reference number 6, you receive all parts identified by reference numbers 6:1, 6:2, and 6:3. However, you may also order any part individually. Reference numbers of this type appear in illustrations and in part lists.

Reference Numbers Indicating Quantity

In an illustration, if a reference number indicates more than one part, the reference number has the form nX y. The n represents the quantity of the part, the X is the multiplication symbol, and the y represents the reference number.

For example, in an illustration, the reference number 2X 37 means that two of the parts identified by reference number 37 are indicated.

Contents

Description	Page	Description	Page
Roller and Skid Assembly 3	Gearbox and Drive Assembly 9
Deck Assembly No. 105-4285 4	Driveshaft Assembly No. 93-9962 10
Lift Arm and Castor Arm Assembly 5	Gear Box Assembly No. 106-4355 11
Deck Chamber Assembly 6	Cover Assembly 12
Spindle and Blade Assembly 7	Optional Foam Filled Caster Wheel Assembly 13
Spindle Assembly 8		

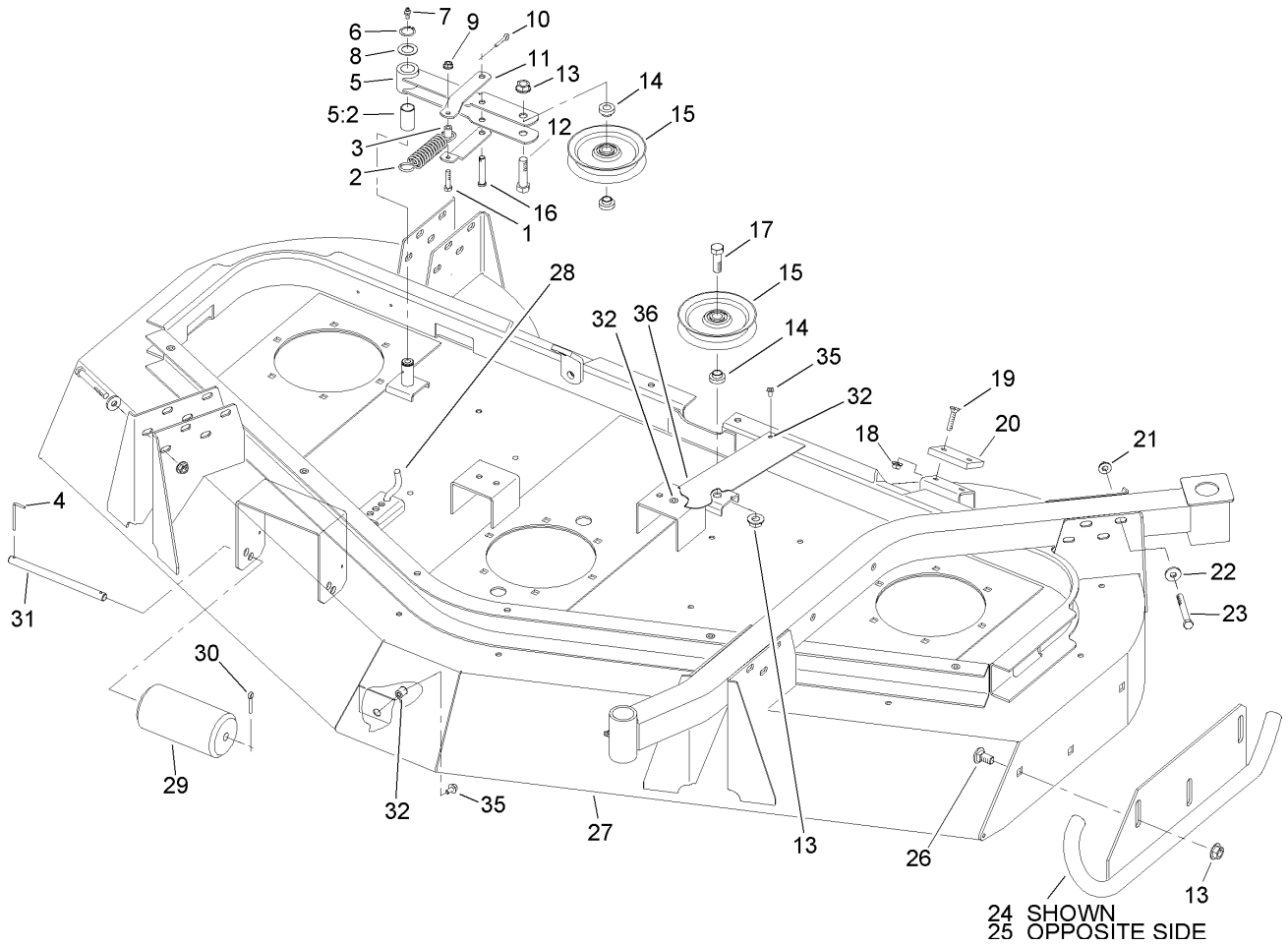
Part Description Abbreviations

Part descriptions in this catalog may include the following abbreviations.

AR. as required	INC. incorporated
ASM. assembly	LH. left hand
CARR. carriage	NI. nylon insert
DEG. degrees	PPH. phillips pan head
FH. flat head	PTH. phillips truss head
GA. gauge	PTO. power take off
HF. hex flange	RH. right hand
HH. hex head	SFH. slotted fillister head
HHF. hex head flange	SHH. slotted hex head
HHFTF. hex head flange thread forming	SHWH. slotted hex washer head
HJ. hex jam	SPH. slotted pan head
HLH. hex lag head	SQH. square head
HOC. height-of-cut	SRH. slotted round head
HS. hex	STD. standard
HSBH. hex socket button head	TAP. self tapping
HSFH. hex socket flat head	TTH. torx truss head
HSH. hex socket head	WH. wing head
HWH. hex washer head	
HWHTF. hex washer head thread forming	
HYD. hydraulic	

Footnotes

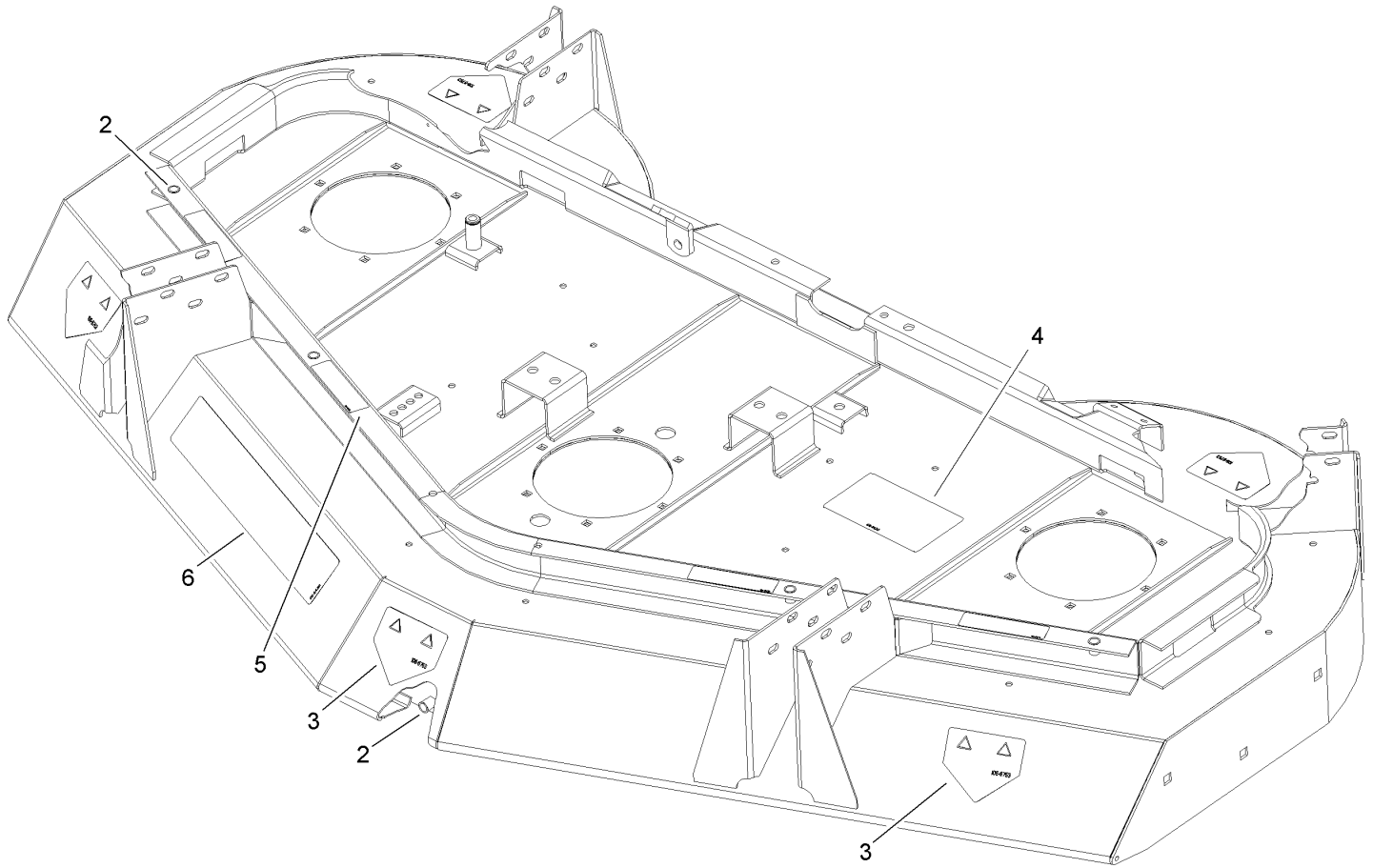
- ❶ Not serviced separately



Roller and Skid Assembly

Ref	Part No.	Qty.	Description
1	321-8	1	Screw-HH
2	85-6390-03	1	Spring-Extension
3	85-5930	1	Tube-Bracket, Spring
4	57-0690	3	Pin-Special
5	85-5900	1	Idler Arm ASM
5:2	256-188	1	Bushing
6	32120-72	1	Ring-Snap
7	302-2	1	Fitting-Grease
8	3-6498	1	Washer-Thrust
9	32128-32	1	Nut-HHF
10	3290-467	1	Pin-Hair
11	85-5920-01	2	Bracket-Spring
12	325-8	1	Screw-HH
13	32128-49	8	Nut-HHF
14	69-6960	3	Spacer-Idler
15	63-1540-03	2	Pulley-Idler
16	283-82	1	Pin-Clevis
17	325-6	1	Screw-HH
18	32128-25	2	Nut-HF
19	32108-103	2	Screw-FH
20	69-9290	1	Pad-Bumper
21	32128-19	16	Nut-HF
22	5-0838	16	Washer
23	323-14	16	Screw-HH

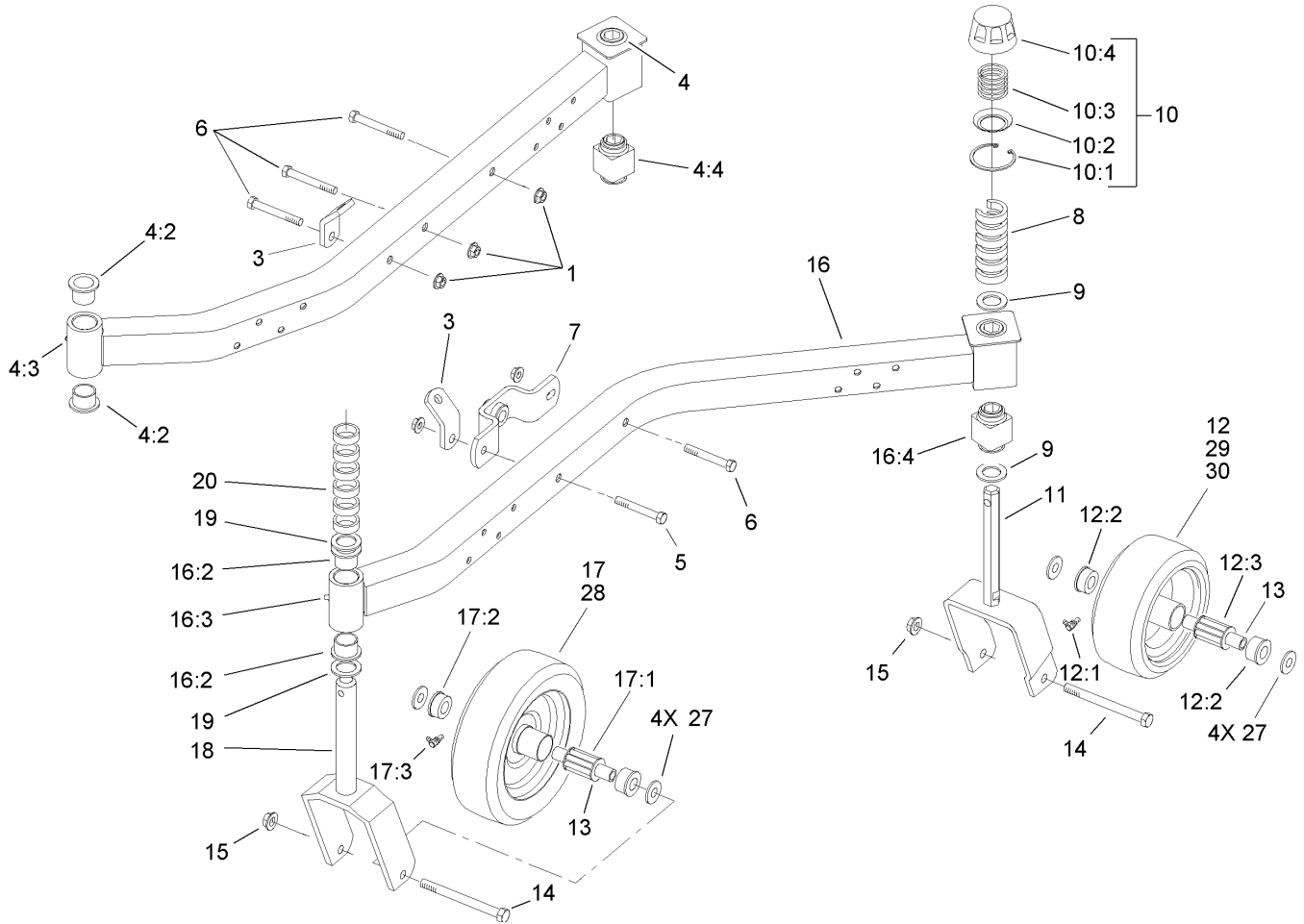
Ref	Part No.	Qty.	Description
24	85-5980-01	1	LH Skid ASM
25	85-5950-01	1	RH Skid ASM
26	3233-9	6	Screw-CARR
27	105-4285	1	Recycler Deck ASM
28	85-5940	1	Rod-Spring
29	36-1740	3	Roller-Deck
30	3272-11	3	Pin-Cotter
31	40-6400	3	Shaft-Roller
32	32148-7	10	Insert-Nut
35	3234-5	2	Screw
36	105-3684-03	1	Plate-Cover



Deck Assembly No. 105-4285

Ref	Part No.	Qty.	Description
2	32148-7	14	Insert-Nut
3	106-6753	5	Decal-Danger, Ce
4	85-6120	1	Decal-Routing, Belt
5	100-6578	4	Decal-Danger
6	85-6430	1	Decal

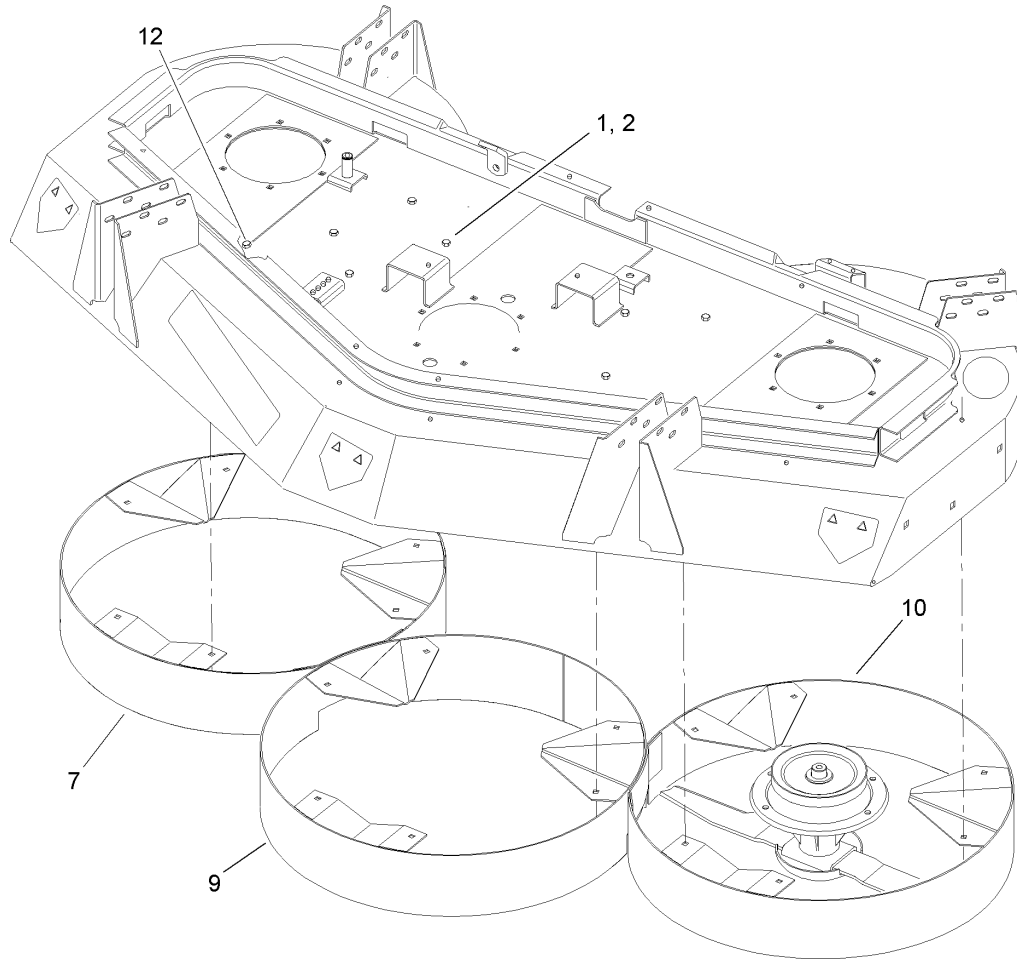
--	--	--	--



Lift Arm and Castor Arm Assembly

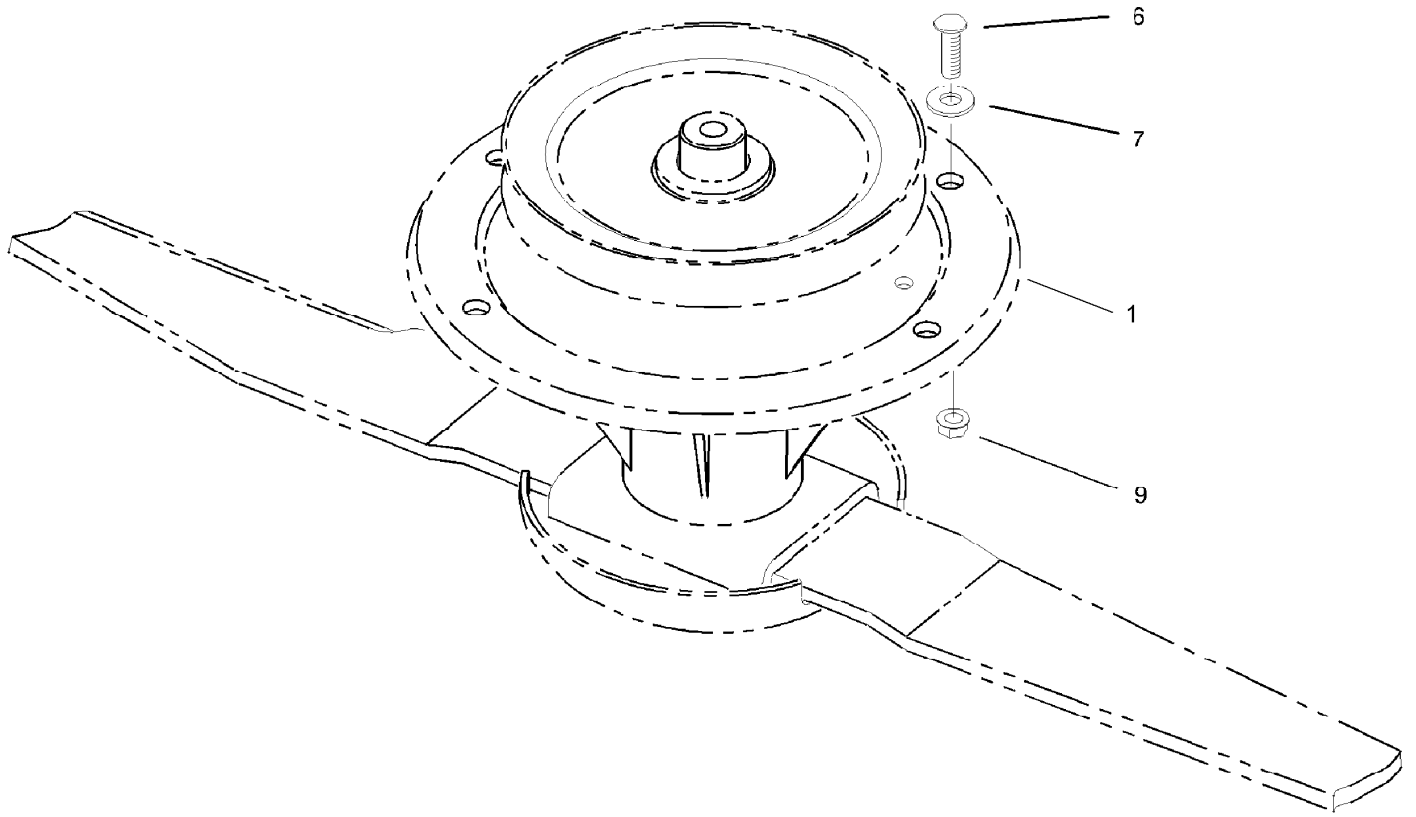
Ref	Part No.	Qty.	Description
1	32128-42	5	Nut-HF
3	85-5830-01	2	Bracket-Chain
4	94-5430	1	RH Castor Arm ASM
4:2	94-1291	2	Bushing
4:3	302-5	1	Fitting-Grease
4:4	93-8471	1	Bushing-Rubber, Square
5	324-13	1	Screw-HH
6	324-12	4	Screw-HH
7	85-5810-01	1	Ball Joint Mount ASM
8	92-8866	12	Spacer
9	92-1765	4	Washer-Thrust
10	92-8862	4	HOC Cap ASM
10:1	92-5581	1	Ring-Retaining
10:2	92-5583	1	Washer-Cap
10:3	92-5584	1	Spring-Compression
10:4	92-8861	1	Cap-HOC
11	94-5383-01	2	Castor Fork ASM
12	85-5760	2	8in Castor Wheel ASM
12:1	302-40	1	Fitting-Grease
12:2	62-5580	2	Bearing-Outside
12:3	83-4740	1	Bearing
13	62-4340	4	Spanner
14	325-22	4	Screw-HH
15	32128-23	4	Nut-HF

Ref	Part No.	Qty.	Description
16	94-5429	1	LH Castor Arm ASM
16:2	94-1291	2	Bushing
16:3	302-5	1	Fitting-Grease
16:4	93-8471	1	Bushing-Rubber, Square
17	92-1655	2	Castor Wheel ASM
17:1	83-4740	1	Bearing
17:2	62-5580	2	Bearing-Outside
17:3	302-40	1	Fitting-Grease
18	94-5381-01	2	Caster Fork ASM
19	3-6781	4	Washer-Thrust
20	63-0070	12	Spacer
27	3256-6	8	Washer-Flat
28	95-3082	1	10in Castor Wheel Kit
29	95-3083	1	8in Castor Wheel Kit
30	95-3085	1	Castor Wheel Set Kit



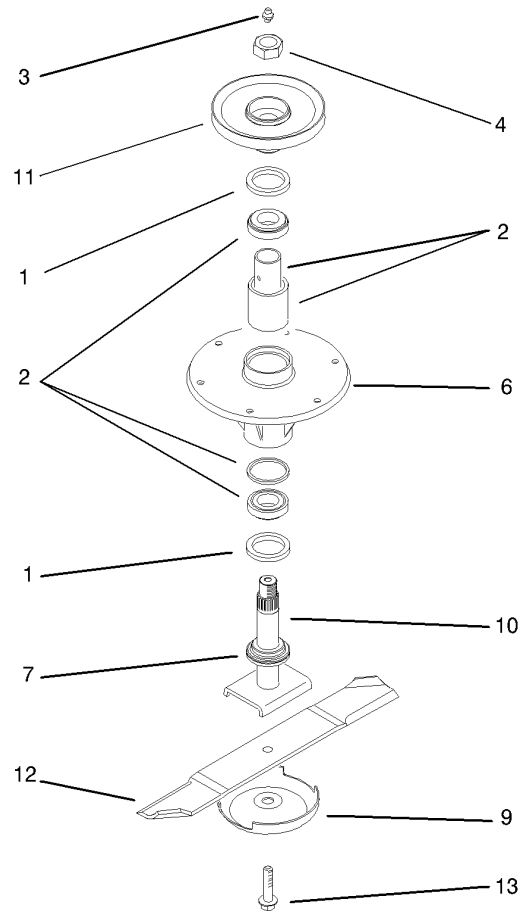
Deck Chamber Assembly

Ref	Part No.	Qty.	Description				
1	3230-18	16	Screw-CARR				
2	32128-25	18	Nut-HF				
7	85-6470-01	1	RH Chamber ASM				
9	85-6480-01	1	Center Chamber ASM				
10	85-6460-01	1	LH Chamber ASM				
12	3230-23	2	Screw-CARR				



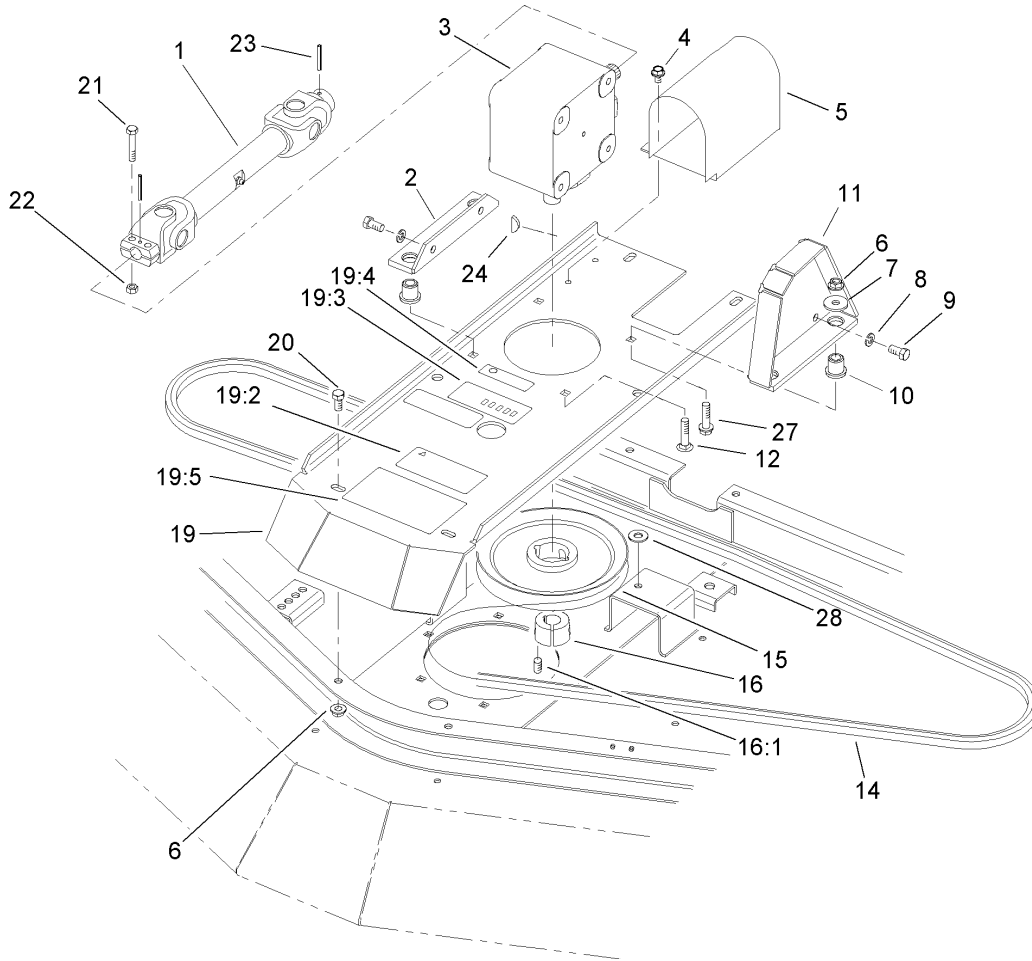
Spindle and Blade Assembly

Ref	Part No.	Qty.	Description				
1		3	Spindle ASM				
6	3231-27	18	Screw-CARR				
7	3256-24	6	Washer-Flat				
9	32128-21	18	Nut-HF				



Spindle Assembly

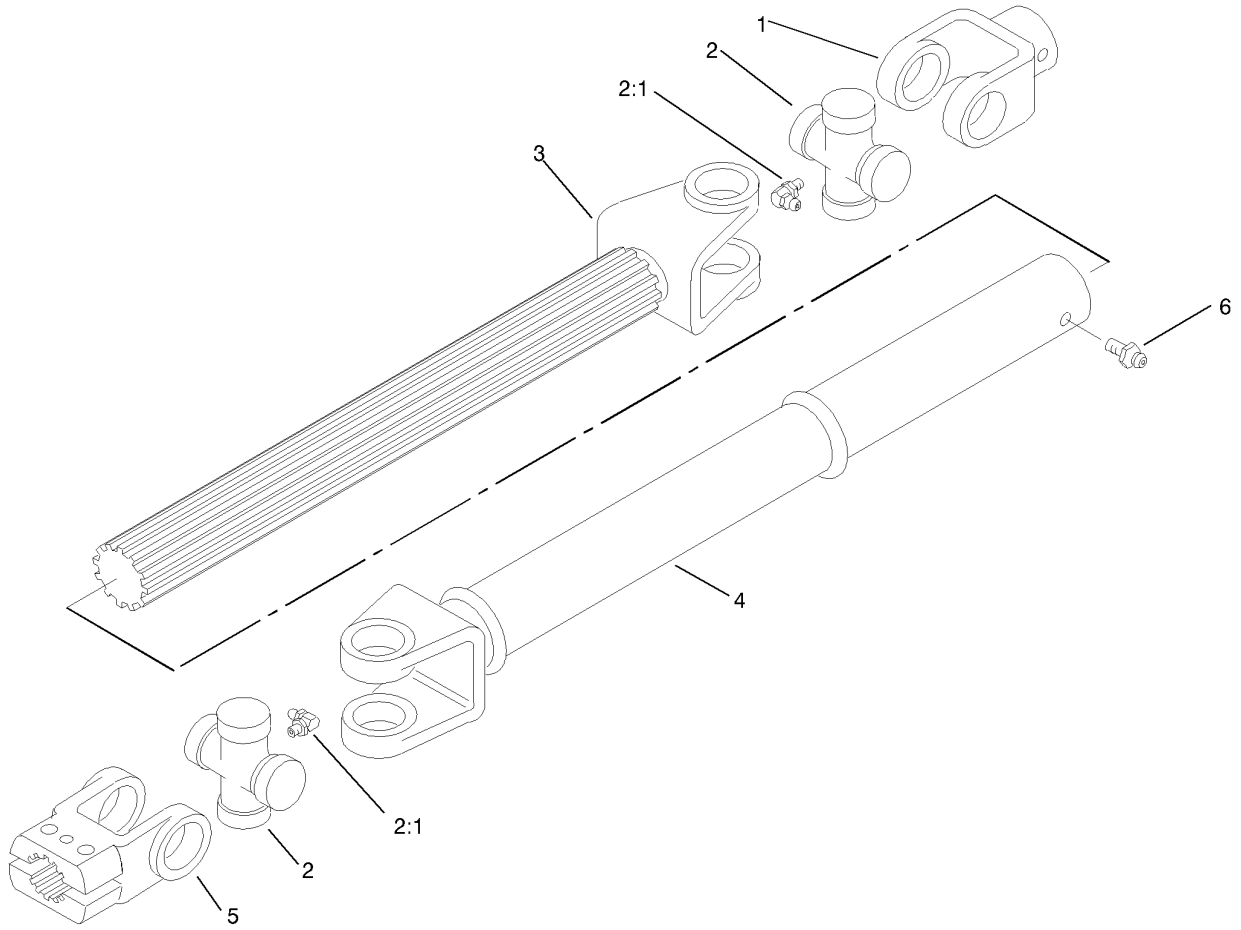
Ref	Part No.	Qty.	Description				
1	253-154	2	Seal-Oil				
2	71-2530	1	Bearing/spacer Kit				
3	302-2	1	Fitting-Grease				
4	3296-49	1	Nut-Lock, NI				
6	69-1530	1	Housing-Spindle				
7	69-6950	1	Spacer-Shaft, Spindle				
9	72-9361	1	Cup-Scalp, Anti				
10	85-6010	1	Shaft-Spindle				
11	85-6030-03	1	Pulley ASM				
12	85-6040-03	1	Blade				
13	92-5816	1	Bolt-Blade				



Gearbox and Drive Assembly

Ref	Part No.	Qty.	Description
1	93-9962	1	Driveshaft ASM
2	68-8560-03	1	Bracket-Gearbox
3	106-4355	1	Gearbox ASM
4	32104-82	2	Screw-HHF
5	93-9839-03	1	Shroud-Shaft, Drive
6	32128-21	10	Nut-HF
7	63-8410	4	Washer
8	3253-21	5	Washer-Lock
9	323-4	5	Screw-HH
10	63-9750	4	Mount
11	85-6330-03	1	Bracket-Gearbox
12	3231-26	3	Screw-CARR
14	93-8457	1	V Belt-Hex
15	85-5860	1	Pulley-Gearbox
16	23-1640	1	Bushing-Taperlock
16:1	3247-4	2	Screw-Set
19	94-9162	1	Gearbox Plate ASM
19:2	93-7818	1	Decal-Torque, Blade Bolt
19:3	93-7826	1	Decal-HOC
19:4	93-6697	1	Decal-Lube
19:5	105-7844	1	Decal-Warning
20	3234-11	6	Screw-HHF
21	322-9	2	Screw-HH
22	3296-29	2	Nut-Lock, NI

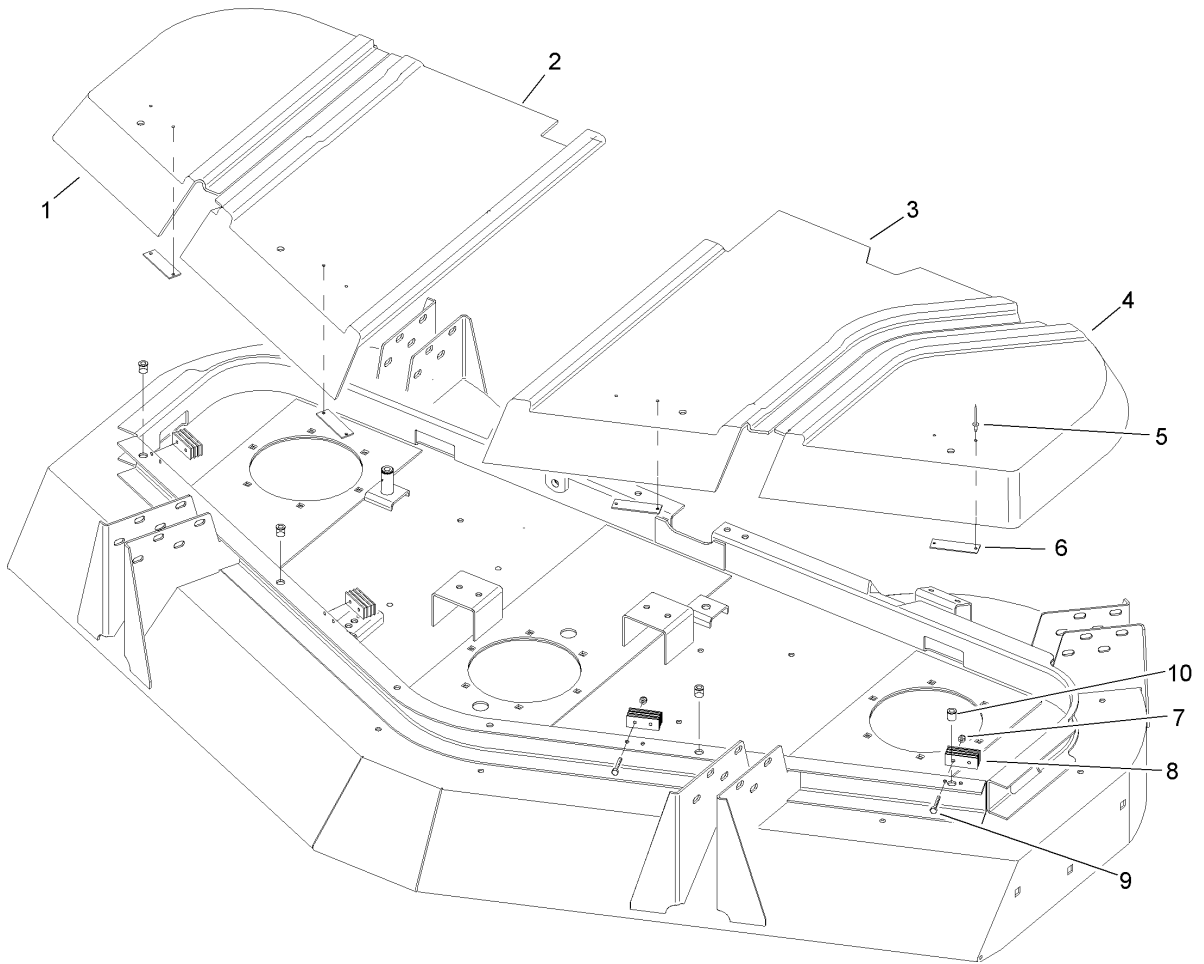
Ref	Part No.	Qty.	Description
23	32121-34	2	Pin-Roll
24	3257-5	1	Key-Woodruff
27	3234-18	1	Screw-HHF
28	3256-24	6	Washer-Flat



Driveshaft Assembly No. 93-9962

Ref	Part No.	Qty.	Description
1	62-3800	1	Yoke-End
2	54-9180	2	U-Joint Kit
2:1	62-3820	1	Fitting-Grease
3	93-9957	1	Shaft-Slip, Yoke
4	93-9961	1	Tube-Slip, Yoke
5	54-9040	1	Yoke-End
6	302-58	1	Fitting-Grease

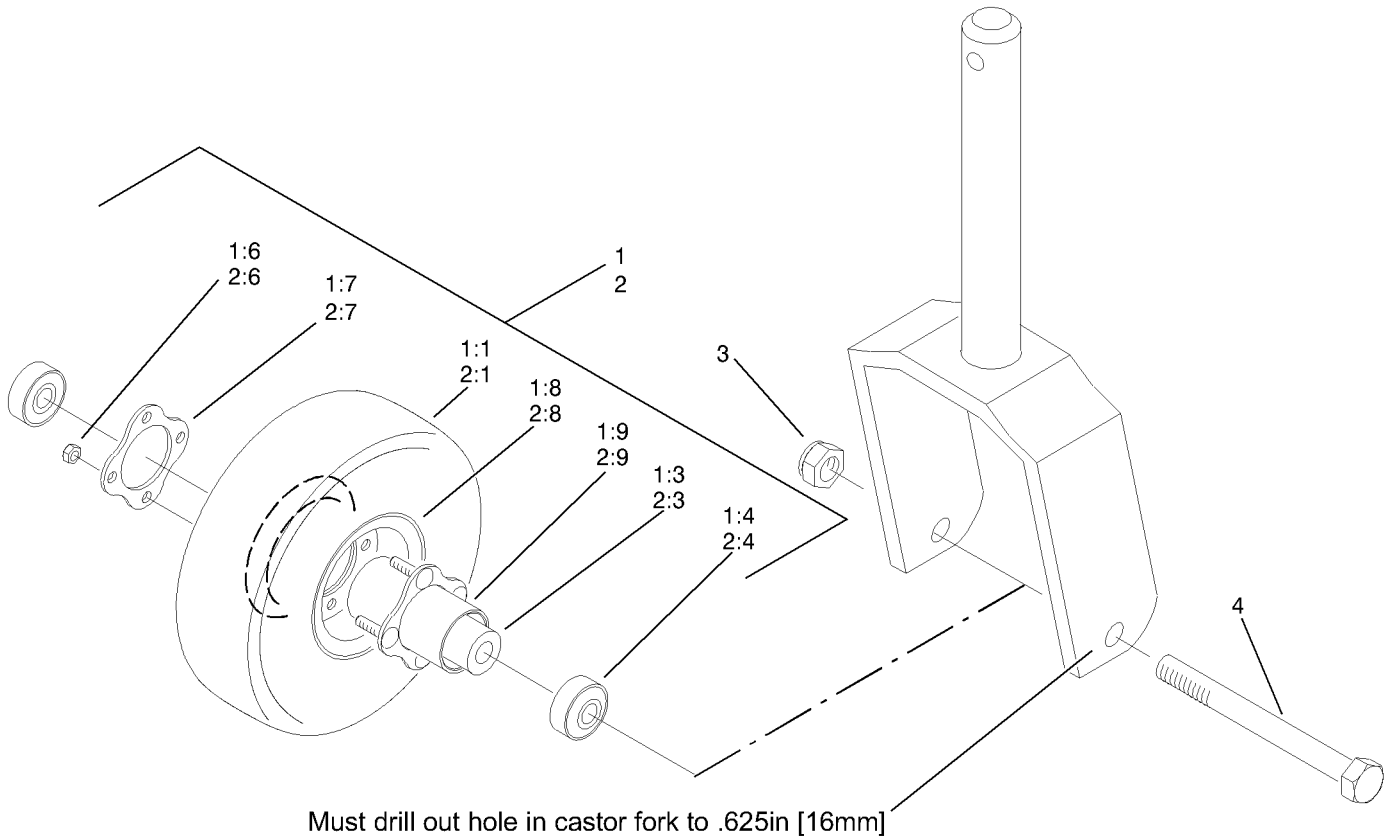
--	--	--	--



Cover Assembly

Ref	Part No.	Qty.	Description
1	85-6080	1	Cover-RH
2	85-6070	1	Cover-Center, RH
3	105-4287	1	Cover-Center, LH
4	85-6050	1	Cover-LH
5	3269-25	8	Rivet-Pop
6	69-6870	4	Plate-Magnet
7	3296-2	8	Nut-Lock
8	69-6260	4	Magnet
9	32105-1	8	Screw-SHH
10	32148-7	4	Insert-Nut

--	--	--	--



Optional Foam Filled Caster Wheel Assembly

Ref	Part No.	Qty.	Description
1	93-5973	1	10in Foam Filled Wheel ASM
1:1	93-4243	1	Tire
1:3	93-4241	1	Spacer-Bearing, Inner
1:4	93-4237	2	Bearing
1:6	32128-16	4	Nut-HHF
1:7	93-4242	1	Plate
1:8	93-4239	2	Rim-Wheel, Half
1:9	93-5980	1	Hub
2	93-5974	1	8in Foam Filled Wheel ASM
2:1	93-9939	1	Tire
2:3	93-4241	1	Spacer-Bearing, Inner
2:4	93-4237	2	Bearing
2:6	32128-16	4	Nut-HHF
2:7	93-4242	1	Plate
2:8	93-4239	2	Rim-Wheel, Half
2:9	93-5980	1	Hub
3	3296-53	1	Nut-Lock, NI
4	327-24	1	Screw-HH

NOTES

NOTES

