



52in Side Discharge Mower, for XT Series Garden Tractors

Model No. 78294 - 240000001 and up.

Parts Catalog

Ordering Replacement Parts

To order replacement parts, please supply the part number, the quantity, and the description of each part desired.

Understanding Reference Numbers

Each Identified part in an illustration has a reference number. The reference number for a part also appears in the parts list, along with other information about the part.

This catalog uses two special reference number formats, one to indicate parts in a service assembly and another to indicate the quantity of a given part in an illustration.

Service Assembly Reference Numbers

Parts in service assemblies have reference numbers in the form a:b. The a represents the reference number of the entire service assembly and the b represents a sequential number unique to each part within the service assembly.

For example, a wheel assembly might be identified by reference number 6, the tire by 6:1, the valve by 6:2, and the wheel by 6:3. When you order the assembly identified by reference number 6, you receive all parts identified by reference numbers 6:1, 6:2, and 6:3. However, you may also order any part individually. Reference numbers of this type appear in illustrations and in part lists.

Reference Numbers Indicating Quantity

In an illustration, if a reference number indicates more than one part, the reference number has the form nX y. The n represents the quantity of the part, the X is the multiplication symbol, and the y represents the reference number.

For example, in an illustration, the reference number 2X 37 means that two of the parts identified by reference number 37 are indicated.

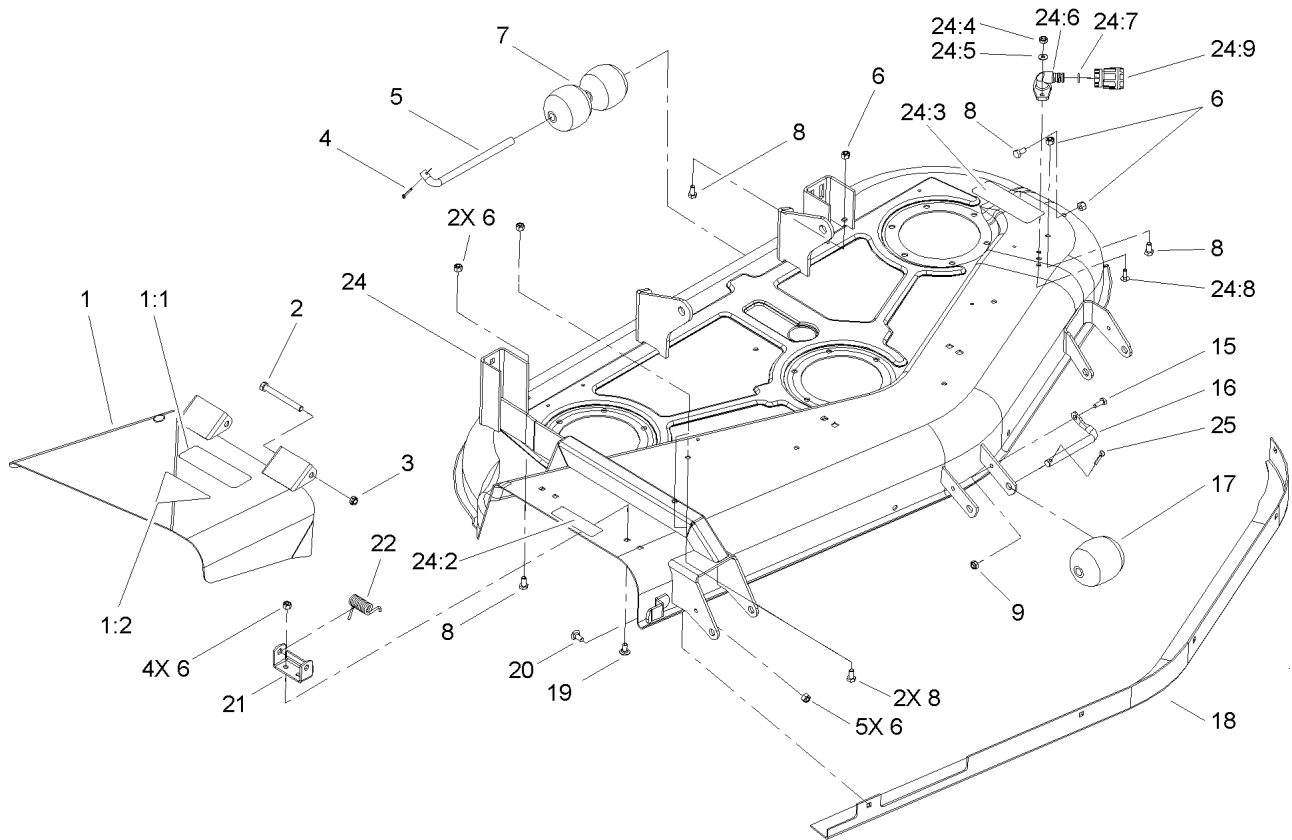
Contents

Description	Page	Description	Page
Deck, Roller and Baffle Assembly 3	Pulley Box Assembly 6
Spindle and Blade Assembly 4	Decal Assembly 7
Deck Suspension Assembly 5		

Part Description Abbreviations

Part descriptions in this catalog may include the following abbreviations.

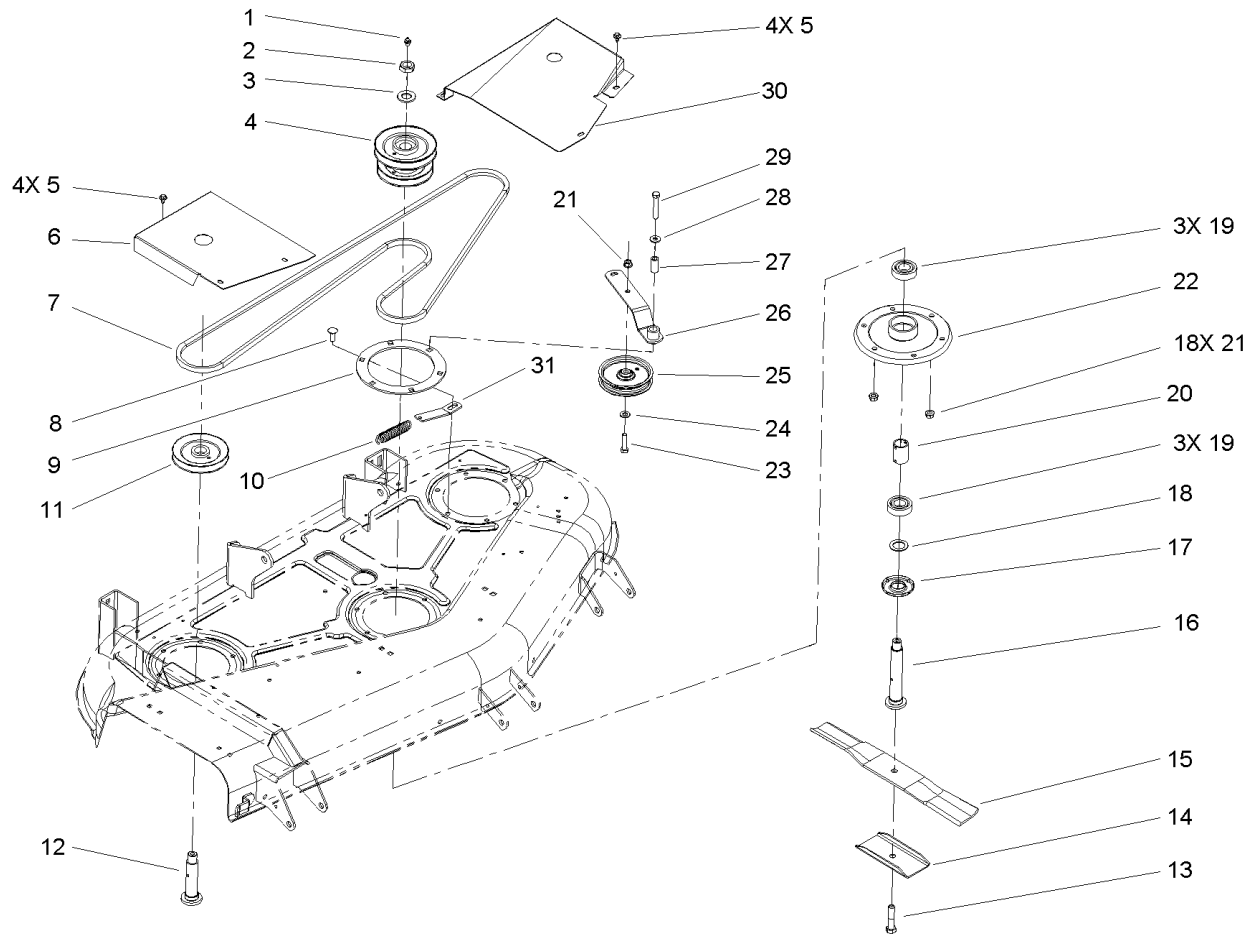
AR. as required	INC. incorporated
ASM. assembly	LH. left hand
CARR. carriage	NI. nylon insert
DEG. degrees	PPH. phillips pan head
FH. flat head	PTH. phillips truss head
GA. gauge	PTO. power take off
HF. hex flange	RH. right hand
HH. hex head	SFH. slotted fillister head
HHF. hex head flange	SHH. slotted hex head
HHFTF. hex head flange thread forming	SHWH. slotted hex washer head
HJ. hex jam	SPH. slotted pan head
HLH. hex lag head	SQH. square head
HOC. height-of-cut	SRH. slotted round head
HS. hex	STD. standard
HSBH. hex socket button head	TAP. self tapping
HSFH. hex socket flat head	TTH. torx truss head
HSH. hex socket head	WH. wing head
HWH. hex washer head	
HWHTF. hex washer head thread forming	
HYD. hydraulic	



Deck, Roller and Baffle Assembly

Ref	Part No.	Qty.	Description
1	94-1580	1	Deflector ASM
1:1	92-7108	1	Decal-Danger
1:2	93-1122	1	Decal-Danger
2	3211-15	2	Screw-HH
3	3296-5	2	Nut-Lock, NI
4	3272-11	2	Pin-Cotter
5	40-0340	2	Shaft-Roller, Rear
6	3296-29	15	Nut-Lock, NI
7	29-4820	4	Roller
8	322-2	6	Screw-HH
9	3296-16	5	Nut-Lock, NI
15	321-4	3	Screw-HH
16	110847-03	3	Shaft-Roller
17	94-1599	3	Roller
18	67-2150-01	1	Baffle
19	3230-18	4	Screw-CARR
20	3230-1	5	Bolt-CARR
21	29-5590-03	2	Bracket-Pivot
22	40-6230	2	Spring
24	106-5802	1	52in Deck/decal ASM
24:2	92-7109	1	Decal-Caution
24:3	92-7108	2	Decal-Danger
24:4	3296-16	2	Nut-Lock, NI
24:5	3256-1	2	Washer-Flat

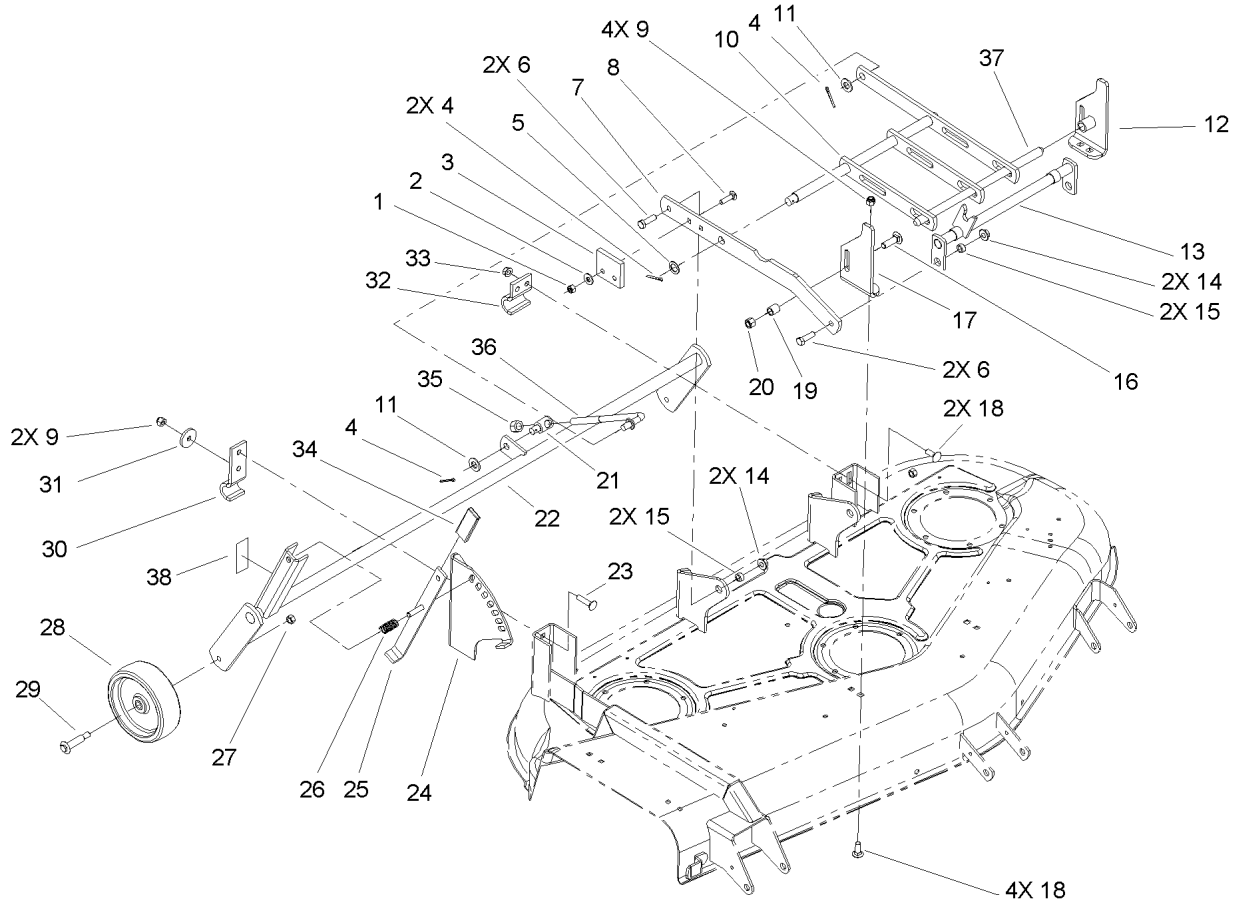
Ref	Part No.	Qty.	Description
24:6	95-2747	1	Fitting-Washout
24:7	46-6290	1	O-Ring
24:8	3229-1	2	Screw-CARR
24:9	95-3270	1	Connector-Hose
25	3272-21	3	Pin-Cotter



Spindle and Blade Assembly

Ref	Part No.	Qty.	Description
1	302-2	3	Fitting-Grease
2	3220-7	3	Nut-Jam
3	3256-28	3	Washer-Flat
4	106-1793	1	Pulley-Double
5	46-8560	8	Screw-HHF
6	106-5607-01	1	Cover-Belt, RH
7	94-2501	1	V-Belt
8	3231-22	17	Screw-CARR
9	27-7680-03	3	Ring-Deck Support
10	51-3650	1	Spring-Extension
11	79-0620	2	Pulley
12	79-1900	2	Shaft-Spindle
13	44-2200	3	Screw-Blade
14	92-9820	3	Stiffener-Blade
15	27-0990-03	3	Blade
16	79-1910	1	Shaft-Spindle
17	79-1920	3	Shield-Bearing
18	120860	3	Washer-Wheel
19	113514	6	Bearing-Ball
20	79-1890	3	Spacer-Bearing
21	32128-21	19	Nut-HF
22	79-2480-03	3	Housing-Spindle
23	323-8	1	Screw-HH
24	3256-24	1	Washer-Flat

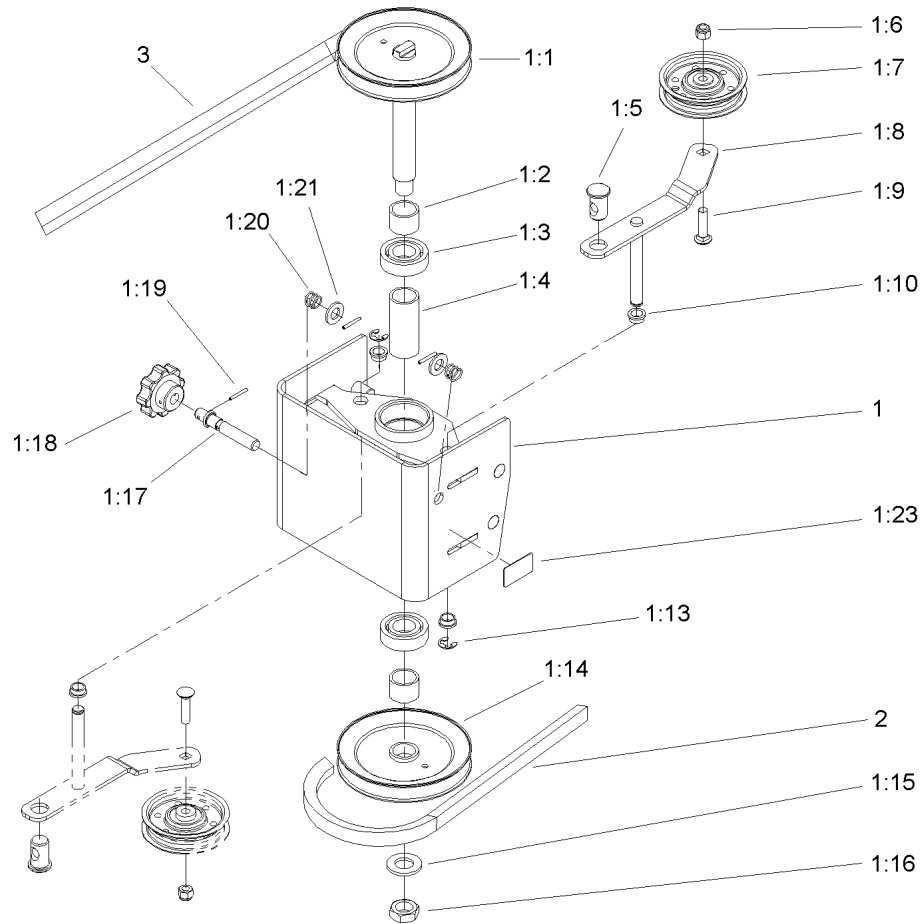
Ref	Part No.	Qty.	Description
25	93-1622	1	Pulley-Idler
26	55-7640-03	1	Idler Arm ASM
27	51-3640	1	Sleeve
28	3256-3	1	Washer-Flat
29	323-11	1	Screw-HH
30	98-1619-01	1	Cover ASM-LH
31	55-7650	1	Plate-Spring



Deck Suspension Assembly

Ref	Part No.	Qty.	Description
1	3296-29	4	Nut-Lock, NI
2	3256-3	4	Washer-Flat
3	102322	2	Bumper
4	3272-12	4	Pin-Cotter
5	3256-69	2	Washer-Flat
6	323-7	4	Screw-HH
7	106-5641-03	2	Bar-Draft
8	3230-3	4	Screw-CARR
9	3296-39	6	Nut-Lock, NI
10	92-0981-03	1	Bar-Leveler
11	3256-26	2	Washer-Flat
12	106-1764-03	1	LH Bracket ASM
13	106-5644-03	1	Hitch ASM
14	102809	4	Locknut-Flange
15	114127	4	Spacer
16	3232-3	2	Screw-CARR
17	106-1765-03	1	RH Bracket ASM
18	3231-2	6	Screw-CARR
19	9793604	2	Spacer
20	3296-48	2	Nut-Lock, NI
21	94-7802	1	Trunnion
22	106-1774-01	1	Wheel Support ASM
23	3231-4	2	Screw-CARR
24	106-1798-01	1	Quadrant

Ref	Part No.	Qty.	Description
25	94-7965-01	1	Lever-HOC
26	101853	1	Spring-Compression
27	32146-2	2	Nut-Lock, NI
28	95-4102	2	Wheel
29	92-1057	2	Bolt-Shoulder
30	110837-03	1	Bracket-Pivot
31	98-3479	1	Washer-Support
32	94-7543-03	1	Clamp
33	32128-40	2	Nut-Flange
34	102597	1	Grip
35	3296-23	1	Nut-Lock, NI
36	106-1789	1	Rod-Adjusting
37	102570-03	1	Shaft-Front
38	111655	1	Decal-HOC



Pulley Box Assembly

Ref	Part No.	Qty.	Description
1	106-5562	1	Pulley Box ASM
1:1	106-5625	1	Upper Pulley ASM
1:2	106-5634	2	Spacer-Pulley
1:3	251-82	2	Bearing-Ball
1:4	106-5633	1	Spacer-Bearing
1:5	105-1397	2	Ferrule-Adjuster
1:6	3296-22	2	Nut-Lock, NI
1:7	92-7101	2	Pulley-Flat Idler
1:8	106-5636	2	Idler Arm ASM
1:9	3231-4	2	Screw-CARR
1:10	256-156	4	Bushing-Flange
1:13	32120-47	2	Ring-Retaining, External
1:14	106-5627	1	Lower Pulley ASM
1:15	3256-28	1	Washer-Flat
1:16	3220-7	1	Nut-Jam
1:17	106-4024	2	Rod-Tension
1:18	105-1492	2	Knob-Adjusting
1:19	933156	4	Pin-Roll
1:20	106-9892	2	Spring-Compression
1:21	106-9888	2	Washer-Flat
1:23	65-2690	2	Decal-Surface, Hot
2	106-5556	1	Belt-Drive
3	106-5631	1	Belt-PTO

--	--	--	--

